

V&V Reference Report

L2 ASCDS Version : 7.6.9

Observation 1678 - L2 Version 001
Chandra X-Ray Center

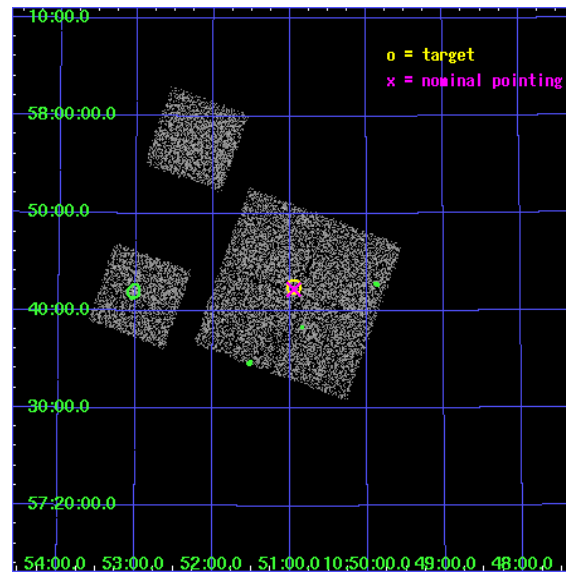
L2 Processing Date : Dec 11 2006

Contents

1	Front	2
2	OBI	3
2.1	OBI	3
2.1.1	Images	3
2.1.2	Bias	3
2.1.3	Parameters	4
2.1.4	Events	4
2.2	Compared Parameters	5
2.3	Aspect	6
2.4	Star Slots	9
2.4.1	Slot 3	9
2.4.2	Slot 4	10
2.4.3	Slot 5	11
2.4.4	Slot 6	12
2.4.5	Slot 7	13
2.5	FID Slots	14
2.5.1	Slot 0	14
2.5.2	Slot 1	15
2.5.3	Slot 2	16
3	Point Sources	17
A	Summary	18
A.1	Status	18
A.2	Comments	18

1 Front

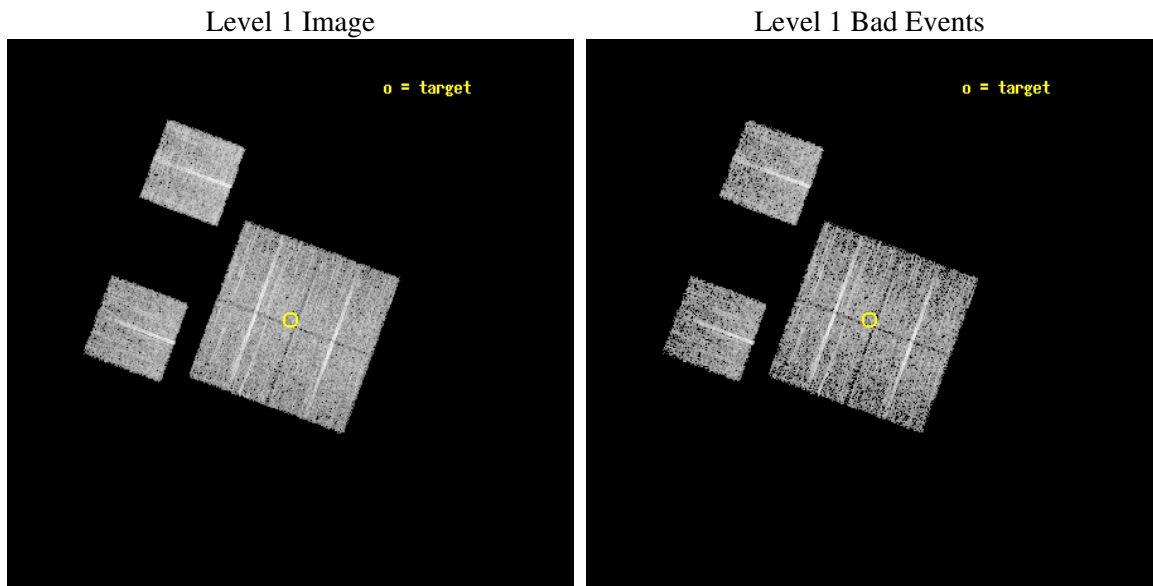
seq_num	900037
obs_id	1678
title	LOCKMAN HOLE SHALLOW SURVEY
observer	Dr. Stephen Murray
object	LOCKMAN HOLE #15
dtcycle	0
cycle	P
ra_targ	162.7375
dec_targ	57.708889
ra_nom	162.73698947933
dec_nom	57.704072415411
roll_nom	290.17952116191
revision	2
ontime	4758.4000044316
livetime	4698.146278411
ontime0	4758.4000044316
ontime1	4758.4000044316
ontime2	4758.4000044316
ontime3	4758.4000044316
ontime6	4758.4000044316
ontime8	4758.4000044316
l2events	18369



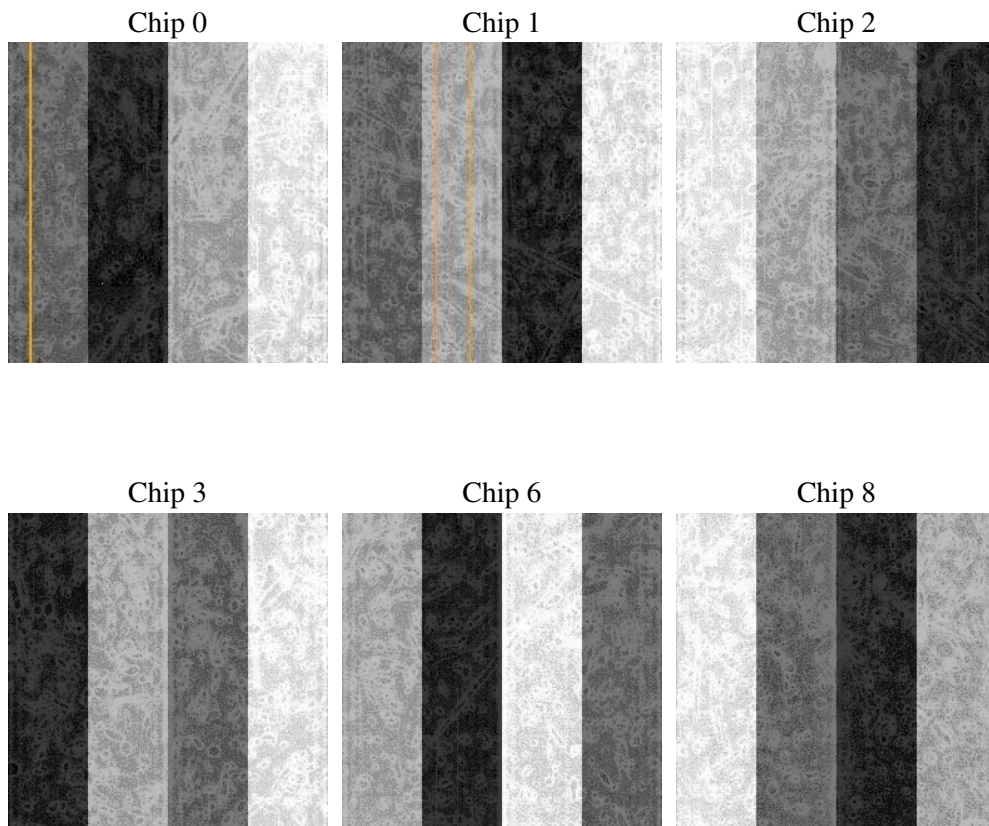
2 OBI

2.1 OBI

2.1.1 Images



2.1.2 Bias



2.1.3 Parameters

obi_num	0
ascdsver	7.6.9
caldsver	3.2.4
date	2006-12-11T17:10:47
revision	2

sched_exp_time	5000.000000
ontime	4764.2659660578
ontime0	4764.2659361362
ontime1	4764.2659361362
ontime2	4764.2659660578
ontime3	4764.2659660578
ontime6	4764.2659660578
ontime8	4764.2659660578
l1events	191706

2.1.4 Events

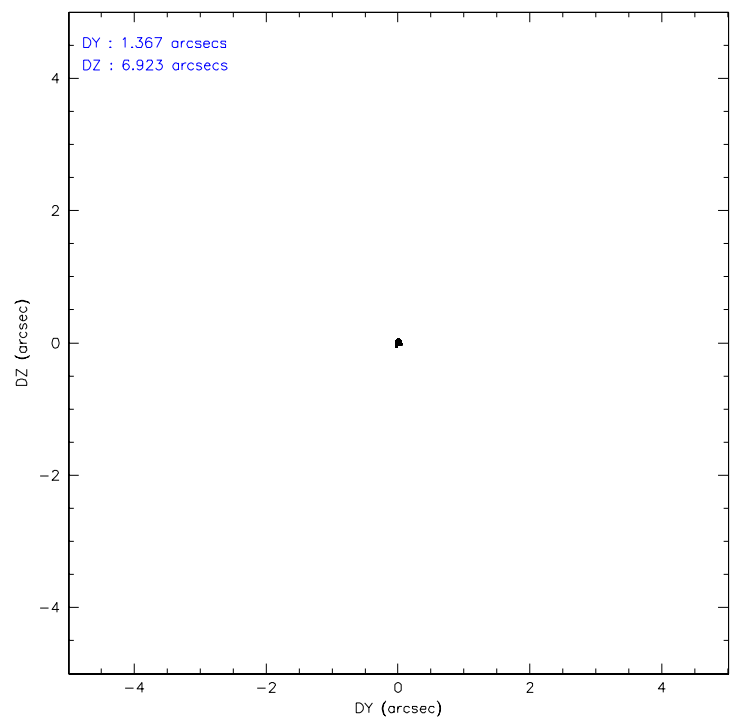
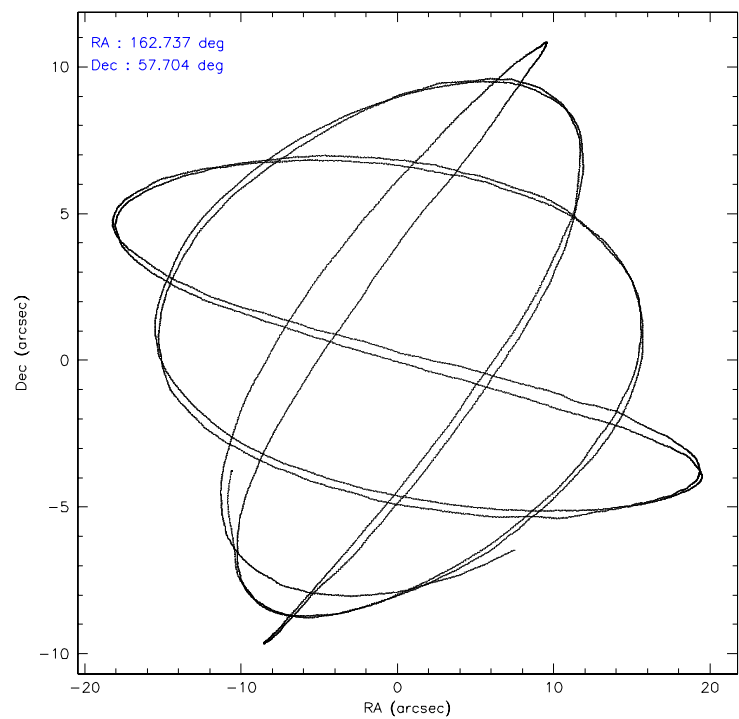
	ccd 0	ccd 1	ccd 2	ccd 3	ccd 6	ccd 8
level 1 events	28524	29953	30953	32352	29399	40525
rejected events	24982	26153	27478	28928	25985	32983
rejected %	87%	87%	88%	89%	88%	81%

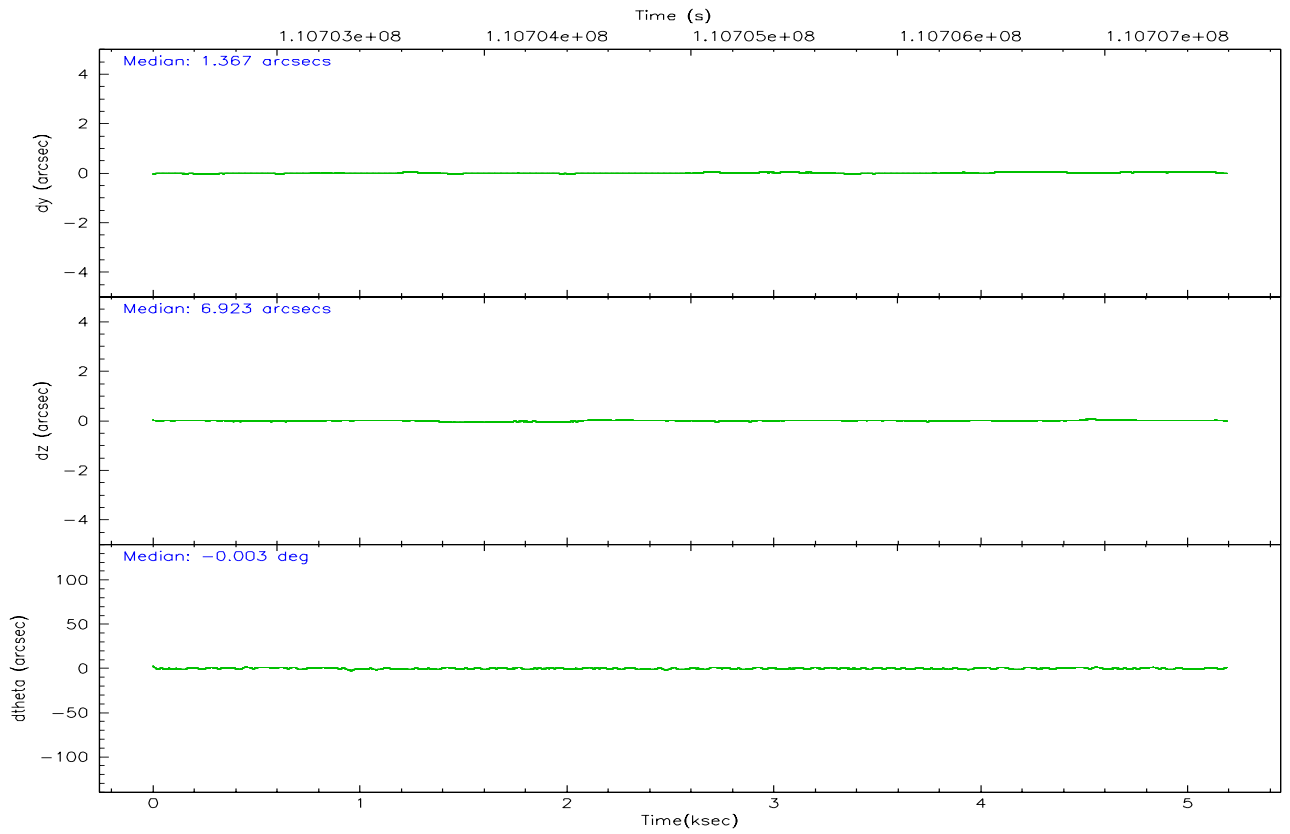
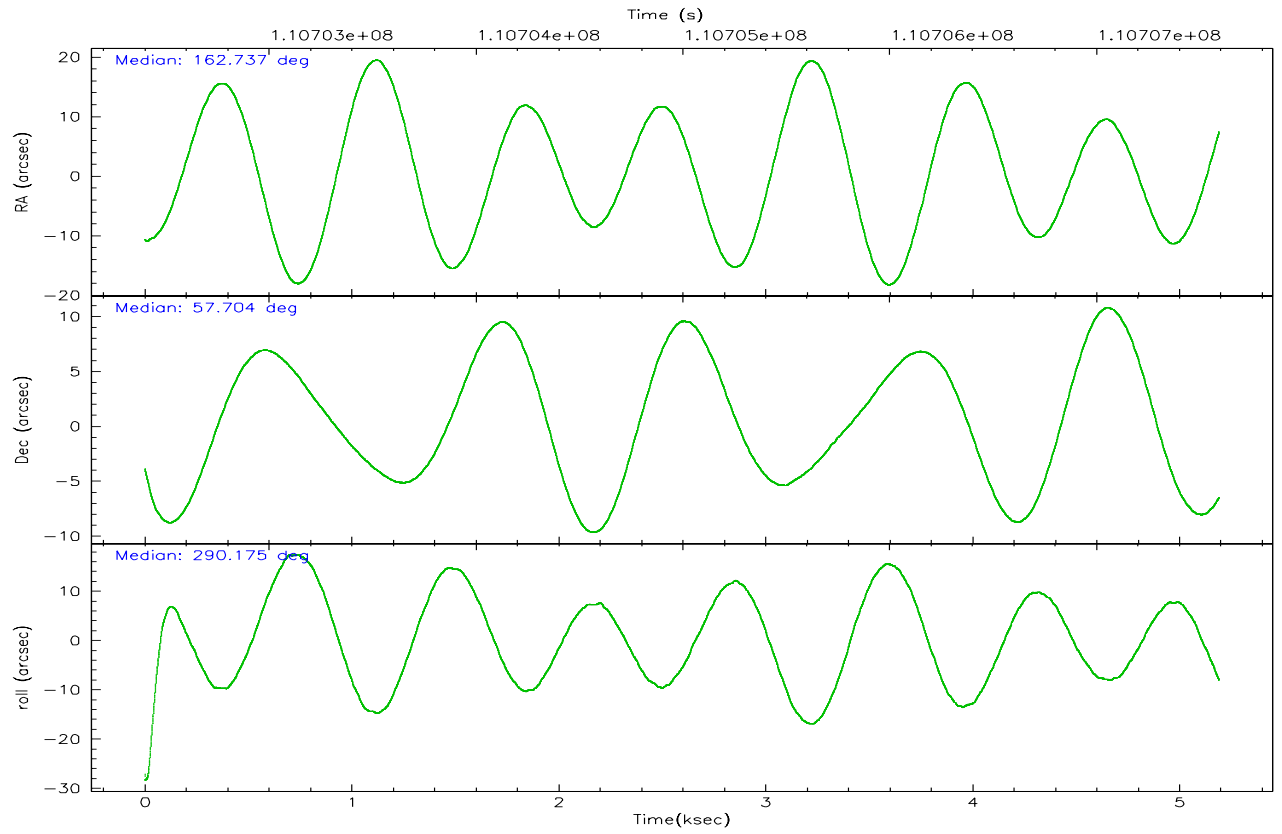
	ccd 0	ccd 1	ccd 2	ccd 3	ccd 6	ccd 8
grade 0 events	1508	1483	1540	1412	1374	2225
	5%	4%	4%	4%	4%	5%
grade 1 events	24	19	12	17	15	22
	0%	0%	0%	0%	0%	0%
grade 2 events	767	787	723	762	659	1742
	2%	2%	2%	2%	2%	4%
grade 3 events	322	379	329	321	378	778
	1%	1%	1%	0%	1%	1%
grade 4 events	336	397	302	326	356	755
	1%	1%	0%	1%	1%	1%
grade 5 events	1107	1164	1051	1165	1266	1615
	3%	3%	3%	3%	4%	3%
grade 6 events	613	758	586	605	653	2044
	2%	2%	1%	1%	2%	5%
grade 7 events	23847	24966	26410	27744	24698	31344
	83%	83%	85%	85%	84%	77%

2.2 Compared Parameters

Parameter	Planned	Actual	Parameter	Planned	Actual
Instrument	ACIS	ACIS	Obspar format version number	6	6
Detector	ACIS-012368	ACIS-012368	Obspar file type	PREDICTED	ACTUAL
Grating	NONE	NONE	Obspar update status	NONE	UPDATED
Data mode	FAINT	FAINT	Number of optional ACIS chips dropped	0	0
Observation mode	POINTING	POINTING	On-chip summing requested	N	N
Pointing RA	162.697567	162.7369894793269	Subarray requested	NONE	NONE
Pointing Dec	57.721708	57.70407241541073	Alternating exposures requested	N	N
Pointing Roll	290.004168	290.179521161909	Primary exposure time	0.000000	3.2
SIM focus pos (mm)	-0.782348	-0.7809083437167272			
SIM defocus (mm)	0	0.001439871863259334			
SIM translation stage pos (mm)	-233.592463	-233.5874344608287			
SIM translation stage offset (mm)	0	-0.005018542100998502			
Observation start time	110702593.184000	110702091.3086			
Observation start date	2001-07-05T06:42:09	2001-07-05T06:34:51			
Observation end time	110707593.184000	110707852.83382			
Observation end date	2001-07-05T08:05:29	2001-07-05T08:10:52			
Read mode	TIMED	TIMED			

2.3 Aspect



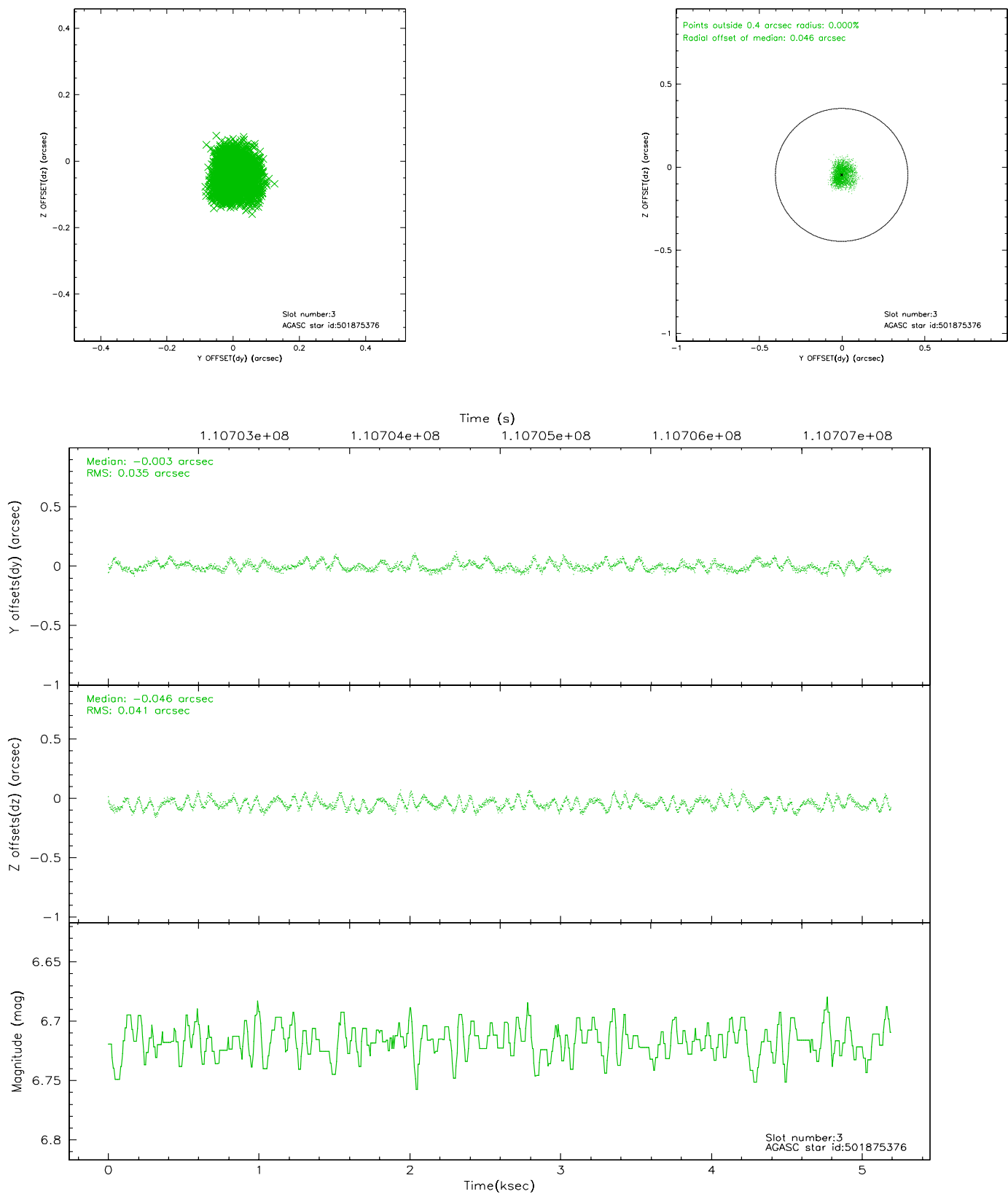


Slot Statistics

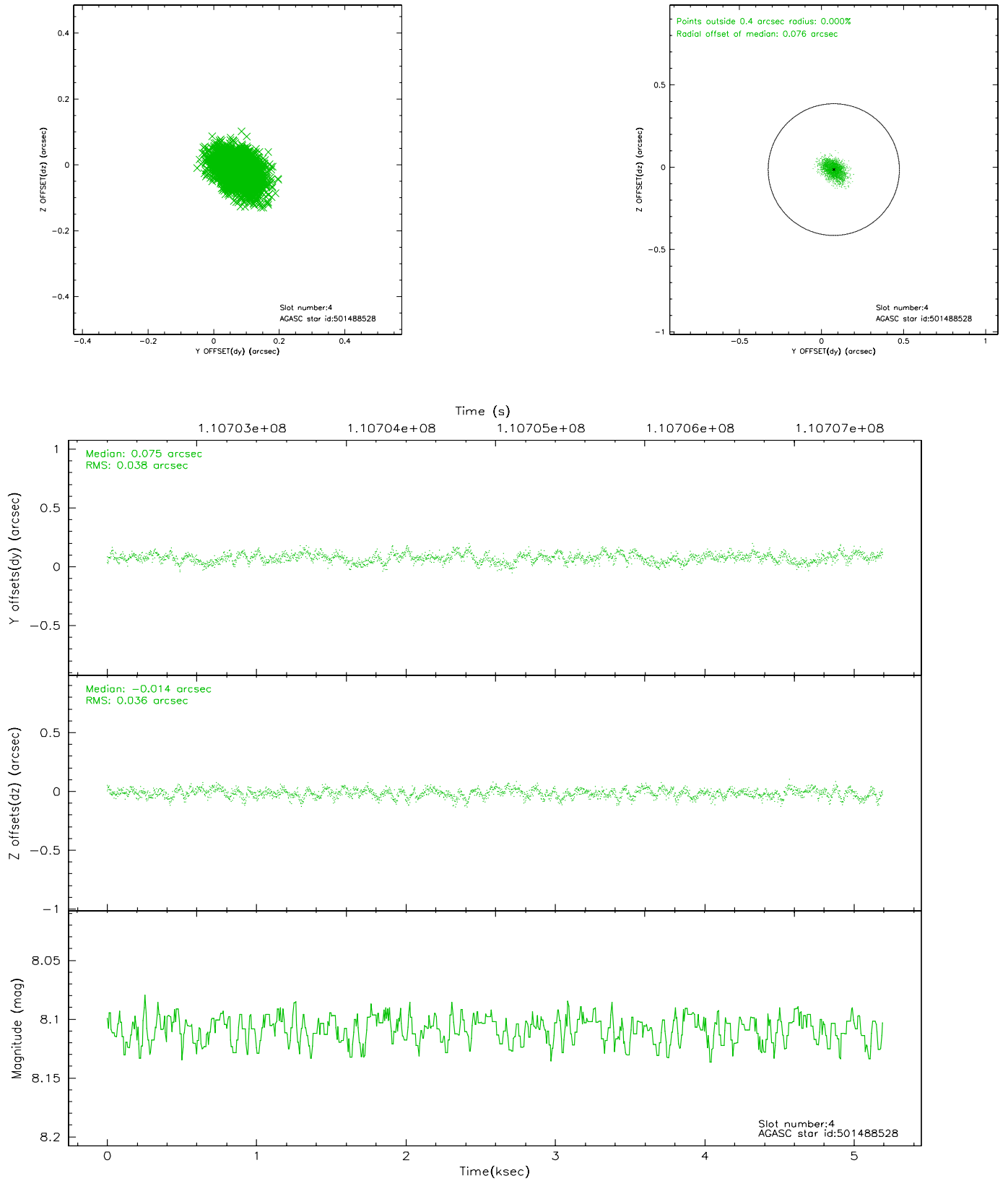
slot	status	id	mag	n_pts	med_dy	med_dz	dr1	dr2	ra	dec	mean_y	mean_z
0	FID	ACIS-I-2	7.16	1267	-0.027	-0.045	0.009	0.015	0.000000	0.000000	-755.73	-836.73
1	FID	ACIS-I-4	7.18	1267	-0.088	0.036	0.005	0.009	0.000000	0.000000	2157.73	1068.97
2	FID	ACIS-I-5	7.23	1265	0.014	0.078	0.009	0.014	0.000000	0.000000	-1808.02	1068.15
3	GUIDE	501875376	6.72	2534	-0.003	-0.046	0.059	0.090	164.111621	57.502963	1648.18	2310.85
4	GUIDE	501488528	8.11	2534	0.075	-0.014	0.056	0.093	162.150935	57.312270	1017.98	-1499.88
5	GUIDE	501876472	9.00	2533	-0.075	0.048	0.082	0.133	163.621724	57.867447	100.72	1846.26
6	GUIDE	501875064	9.13	2532	0.040	0.070	0.088	0.143	163.017696	58.369846	-1987.56	1367.51
7	GUIDE	501876968	9.39	2530	-0.035	-0.065	0.104	0.166	161.243582	57.954681	-1767.25	-2311.52

2.4 Star Slots

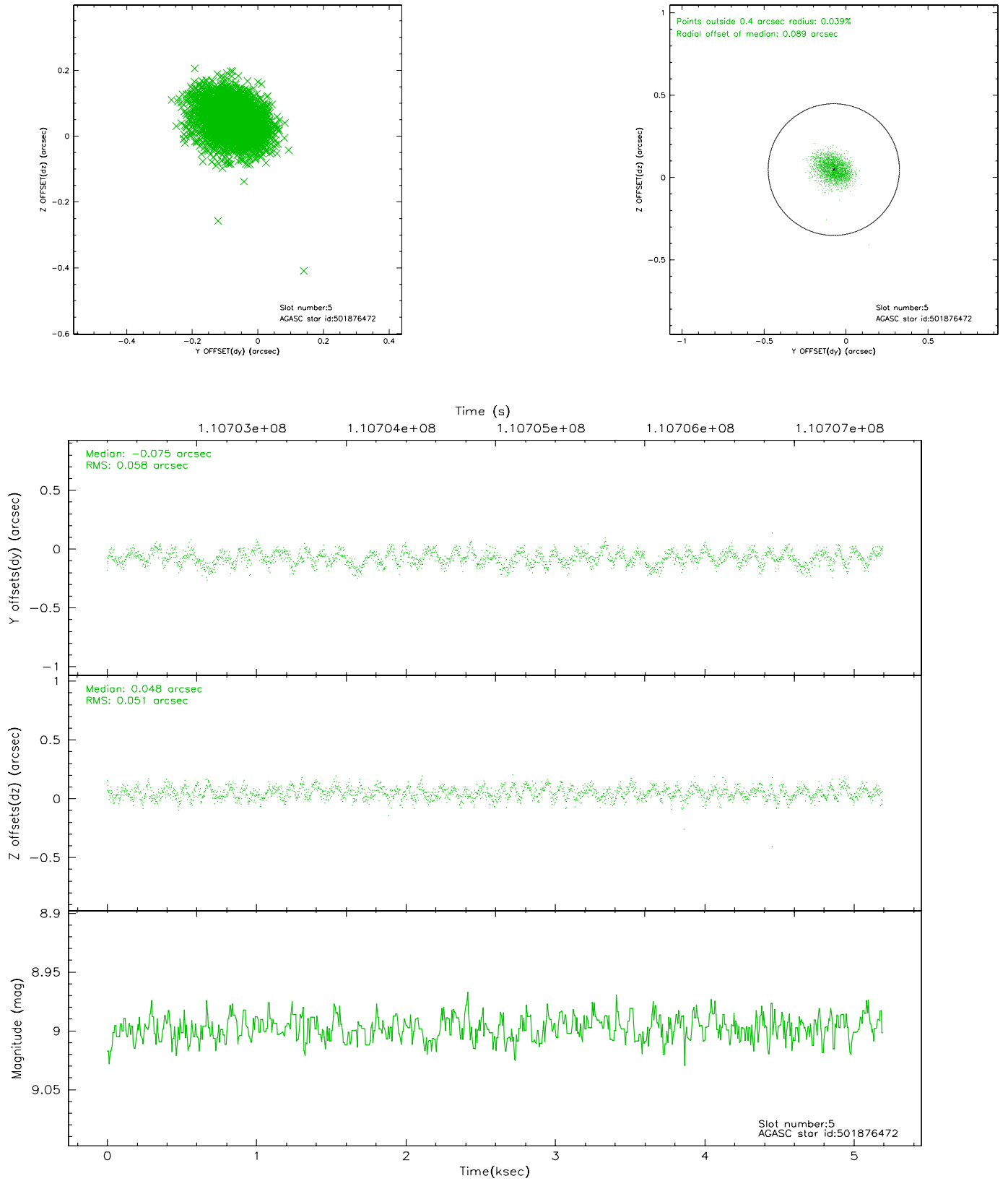
2.4.1 Slot 3



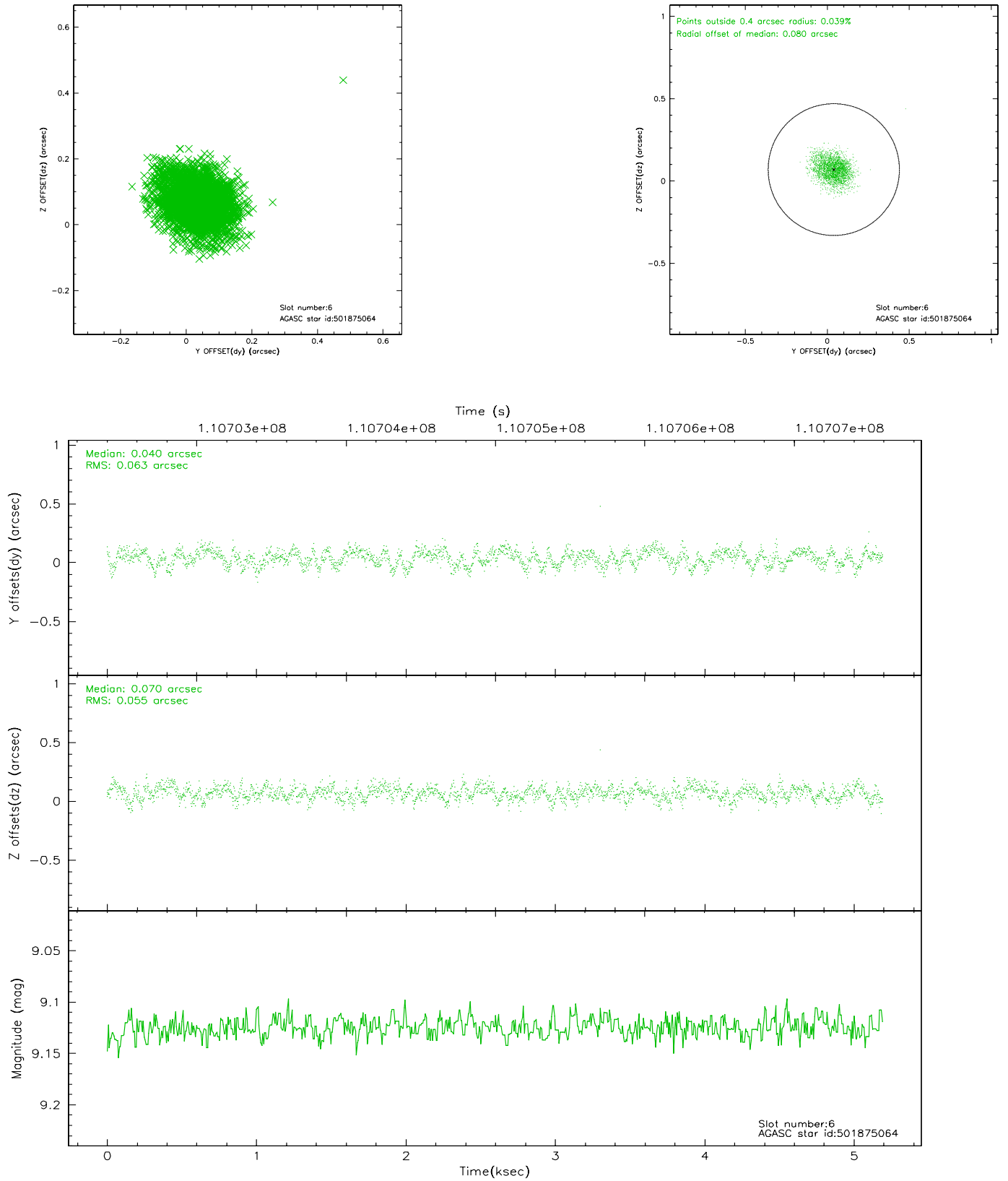
2.4.2 Slot 4



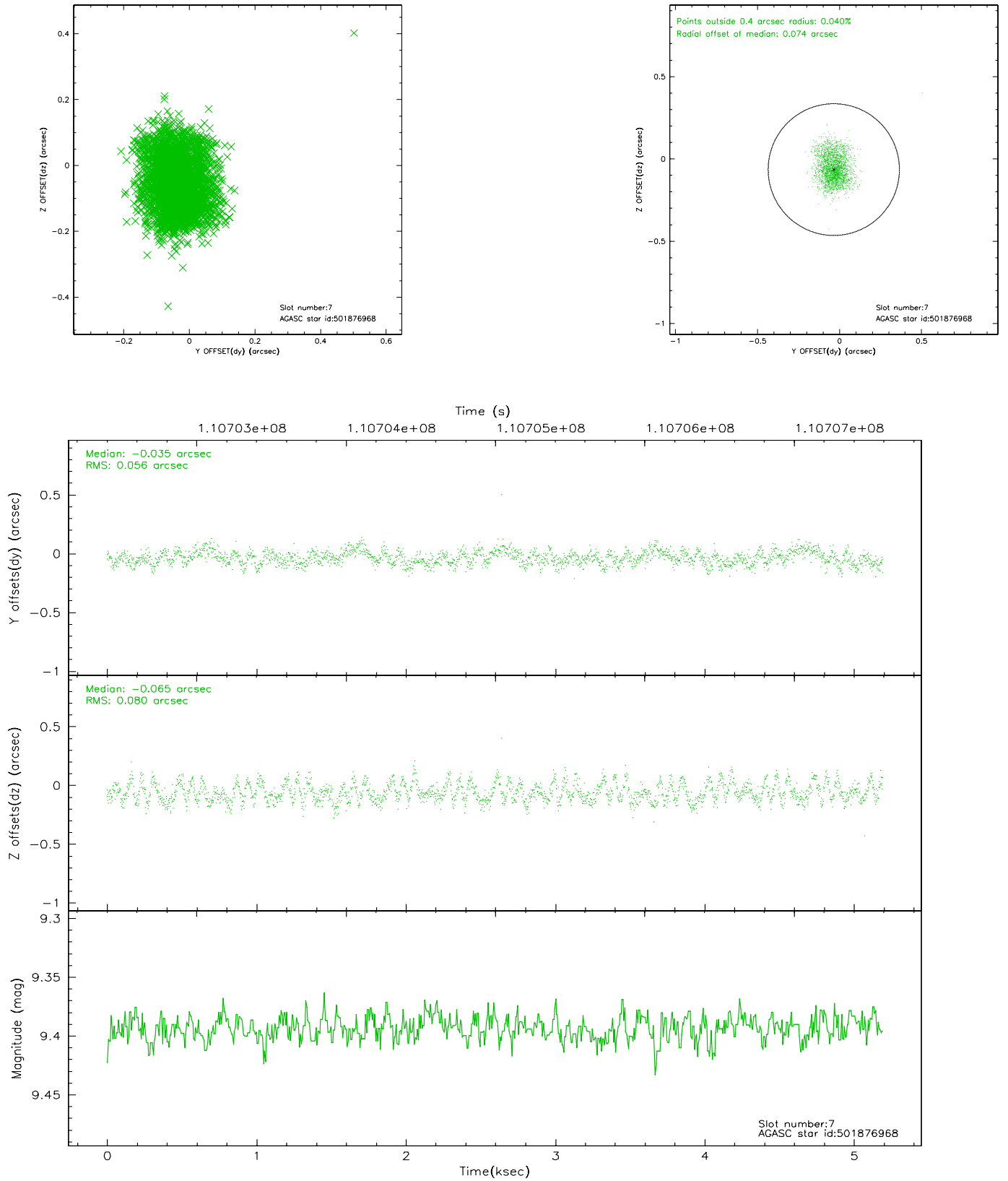
2.4.3 Slot 5



2.4.4 Slot 6

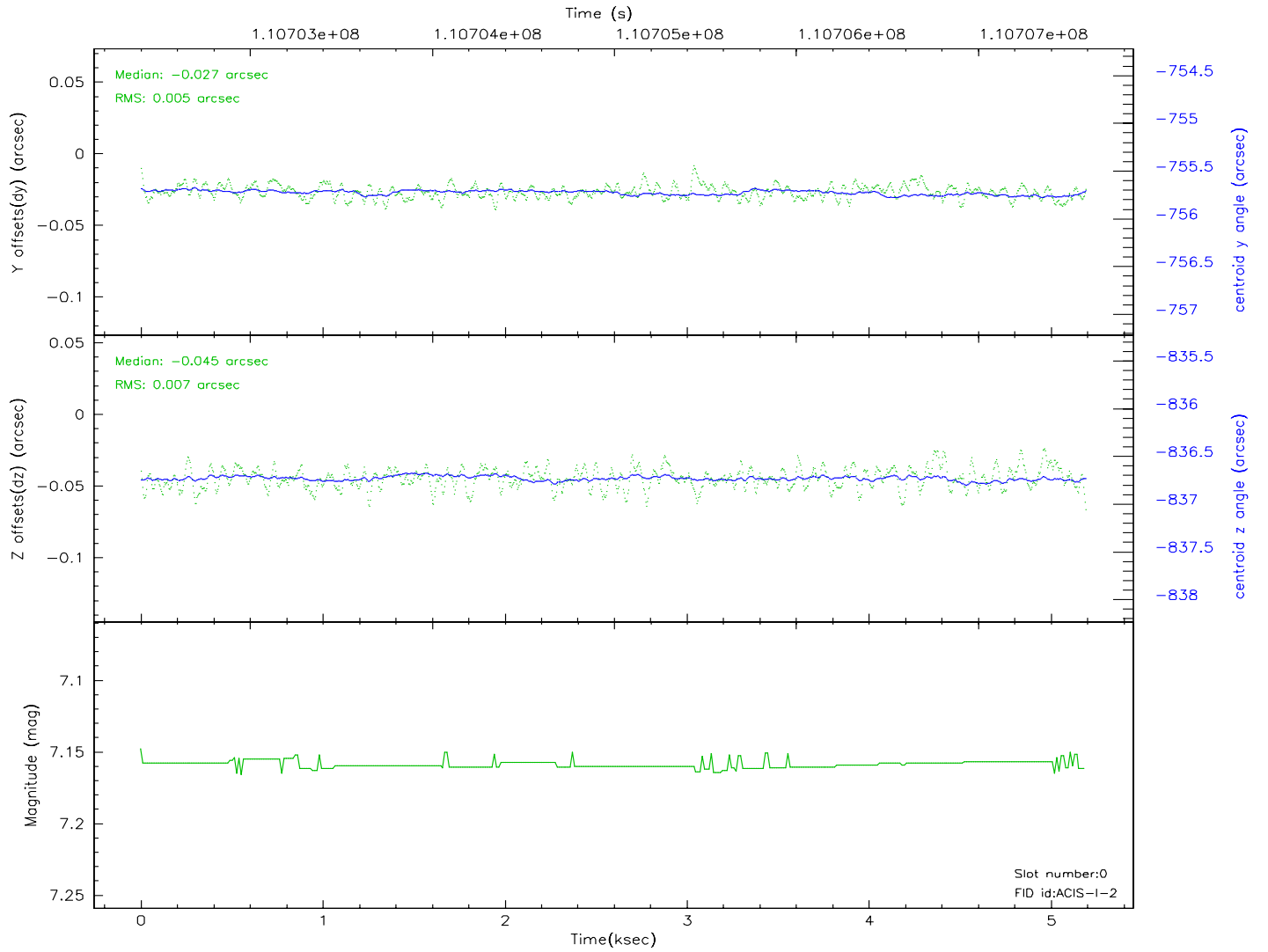
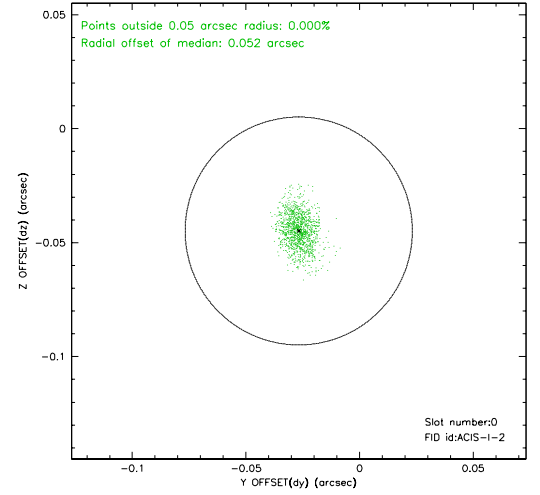
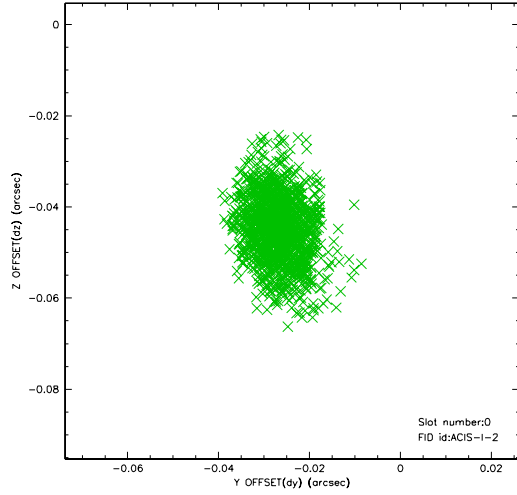


2.4.5 Slot 7

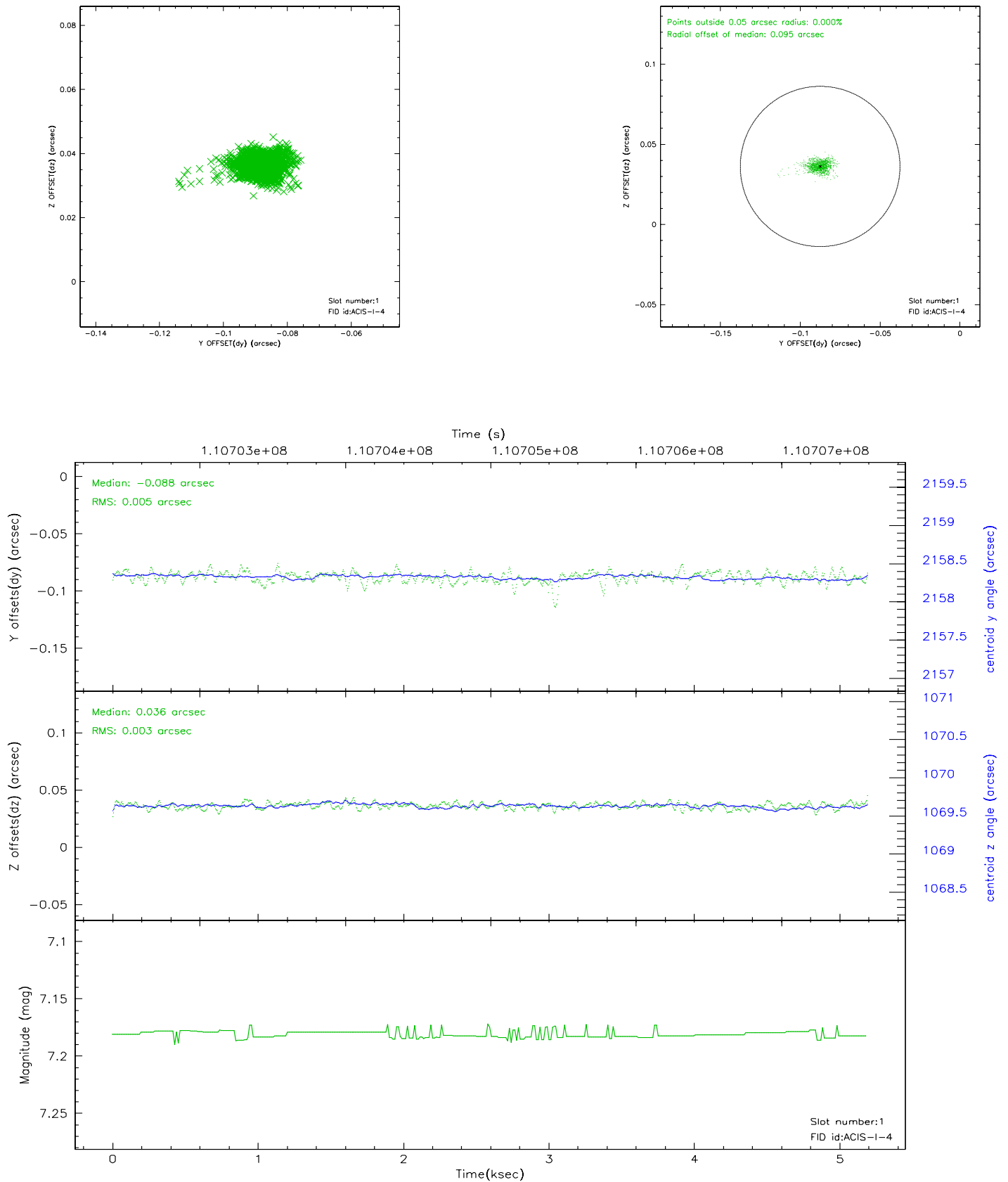


2.5 FID Slots

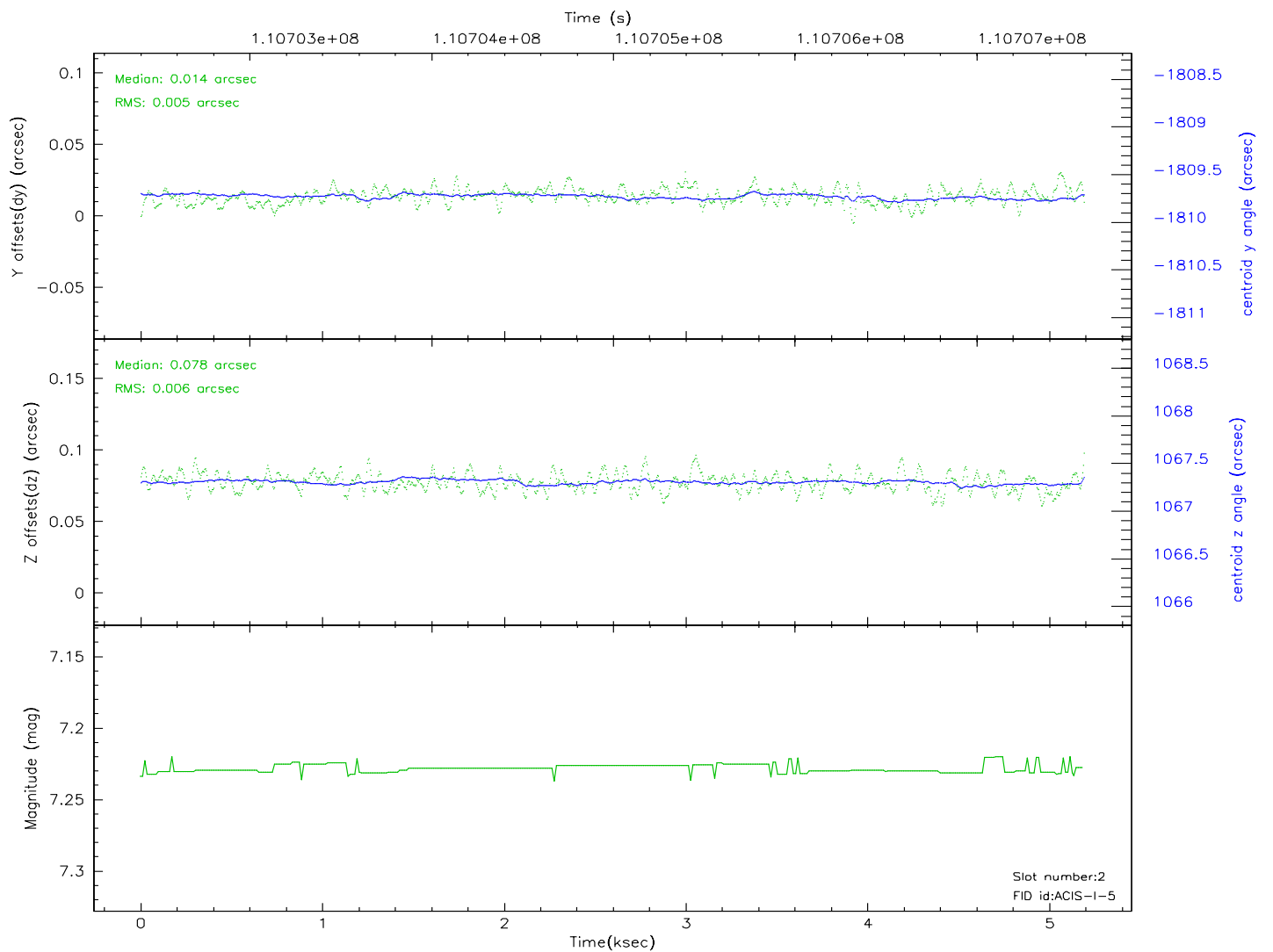
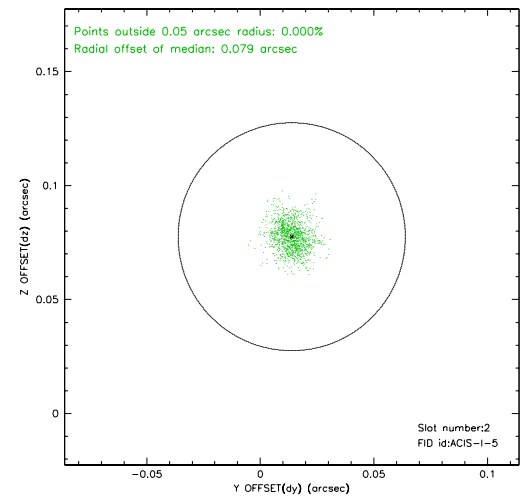
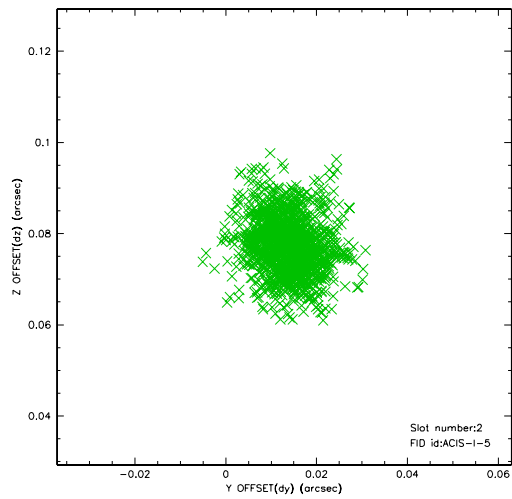
2.5.1 Slot 0



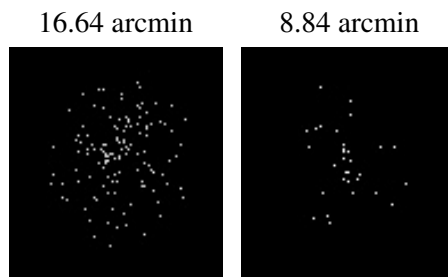
2.5.2 Slot 1



2.5.3 Slot 2



3 Point Sources



A Summary

A.1 Status

V&V Scientist	Beth Sundheim
V&V Date (YYYY-MM-DD)	2006.12.11
V&V Edition	1
V&V Disposition and Status	OK
V&V Charge Time	4.8

A.2 Comments