

V&V Reference Report

L2 ASCDS Version : 7.6.9

Observation 1677 - L2 Version 001
Chandra X-Ray Center

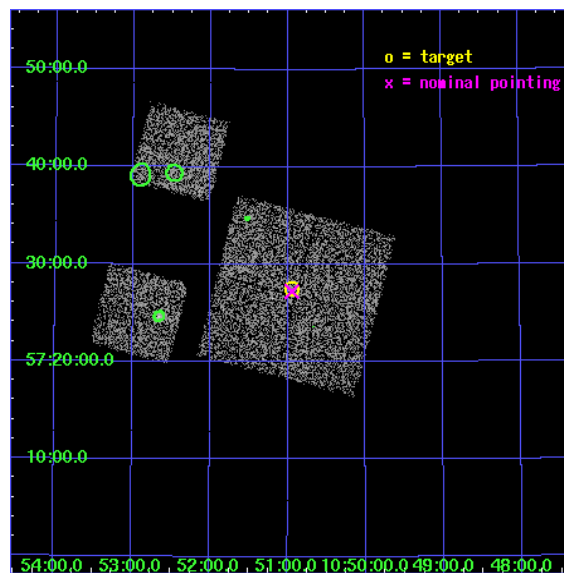
L2 Processing Date : Dec 11 2006

Contents

1	Front	2
2	OBI	3
2.1	OBI	3
2.1.1	Images	3
2.1.2	Bias	3
2.1.3	Parameters	4
2.1.4	Events	4
2.2	Compared Parameters	5
2.3	Aspect	6
2.4	Star Slots	9
2.4.1	Slot 3	9
2.4.2	Slot 4	10
2.4.3	Slot 5	11
2.4.4	Slot 6	12
2.4.5	Slot 7	13
2.5	FID Slots	14
2.5.1	Slot 0	14
2.5.2	Slot 1	15
2.5.3	Slot 2	16
3	Point Sources	17
A	Summary	18
A.1	Status	18
A.2	Comments	18

1 Front

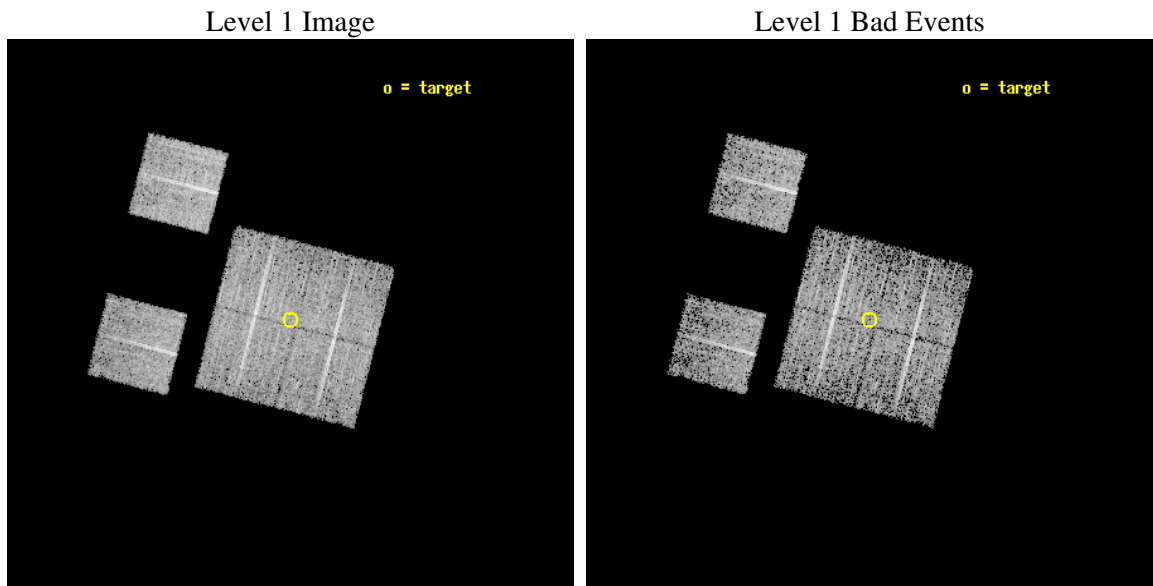
seq_num	900036
obs_id	1677
title	LOCKMAN HOLE SHALLOW SURVEY
observer	Dr. Stephen Murray
object	LOCKMAN HOLE #10
dtcycle	0
cycle	P
ra_targ	162.7375
dec_targ	57.458889
ra_nom	162.73607127328
dec_nom	57.454149343083
roll_nom	284.50054882817
revision	2
ontime	4758.4000044316
livetime	4698.146278411
ontime0	4758.4000044316
ontime1	4758.4000044316
ontime2	4758.4000044316
ontime3	4758.4000044316
ontime6	4758.4000044316
ontime8	4758.4000044316
l2events	17968



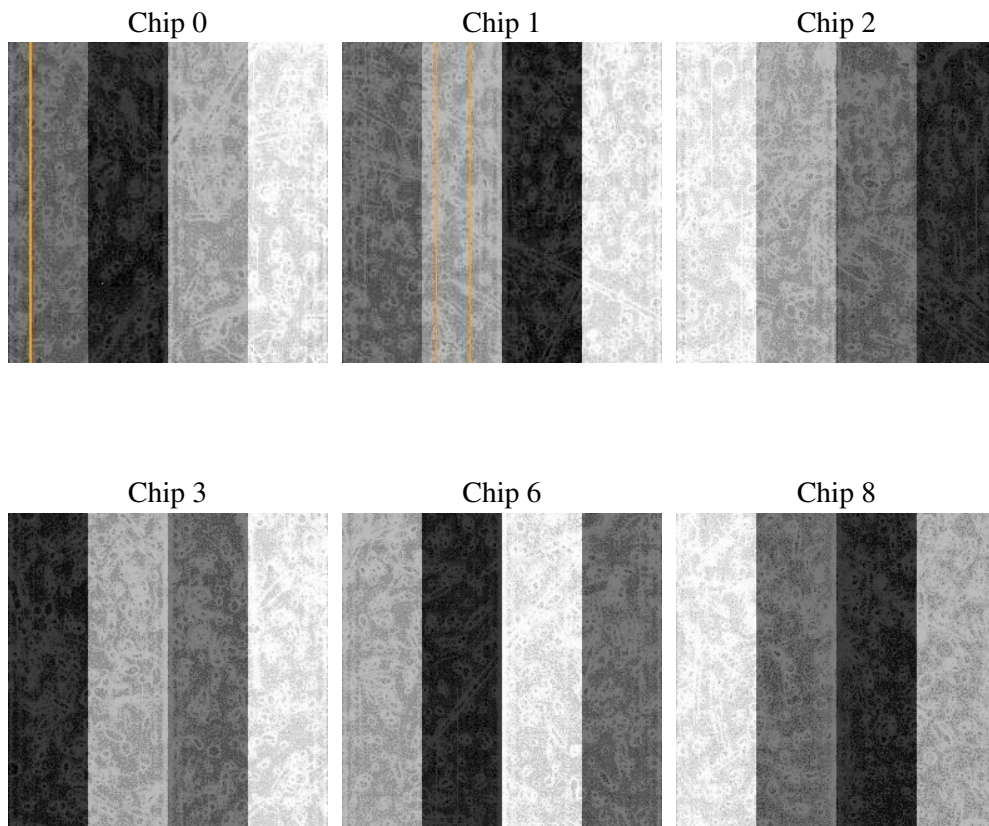
2 OBI

2.1 OBI

2.1.1 Images



2.1.2 Bias



2.1.3 Parameters

obi_num	0
ascdsver	7.6.9
caldsver	3.2.4
date	2006-12-11T16:47:40
revision	2

sched_exp_time	5000.000000
ontime	4764.2655560523
ontime0	4764.2655560523
ontime1	4764.2655361444
ontime2	4764.2655560523
ontime3	4764.2655560523
ontime6	4764.2655560523
ontime8	4764.2655560523
l1events	188562

2.1.4 Events

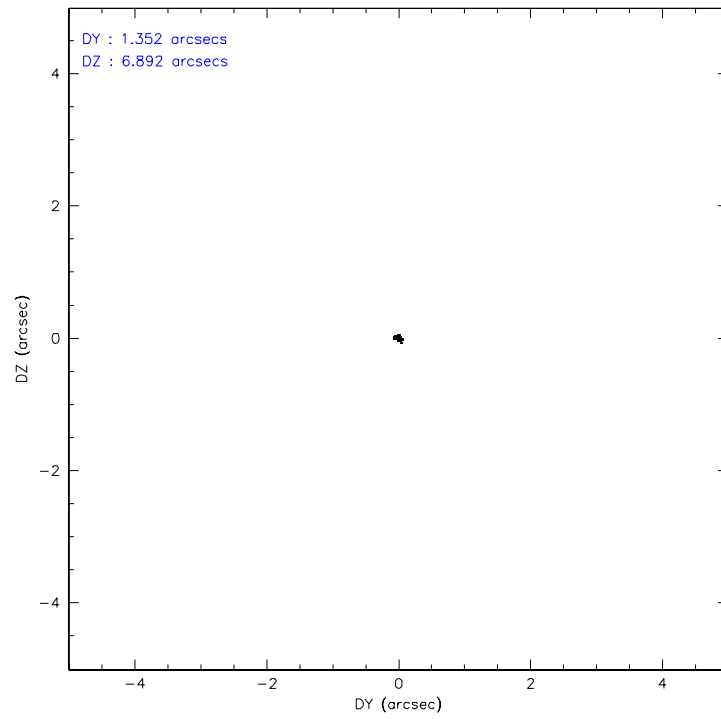
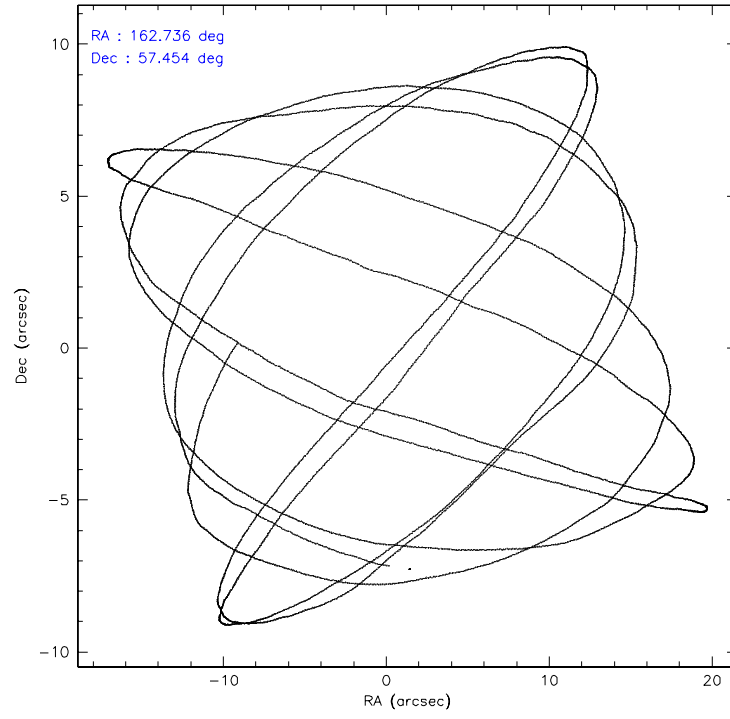
	ccd 0	ccd 1	ccd 2	ccd 3	ccd 6	ccd 8
level 1 events	28741	28536	29723	32186	29245	40131
rejected events	25264	25008	26372	28850	25805	32466
rejected %	87%	87%	88%	89%	88%	80%

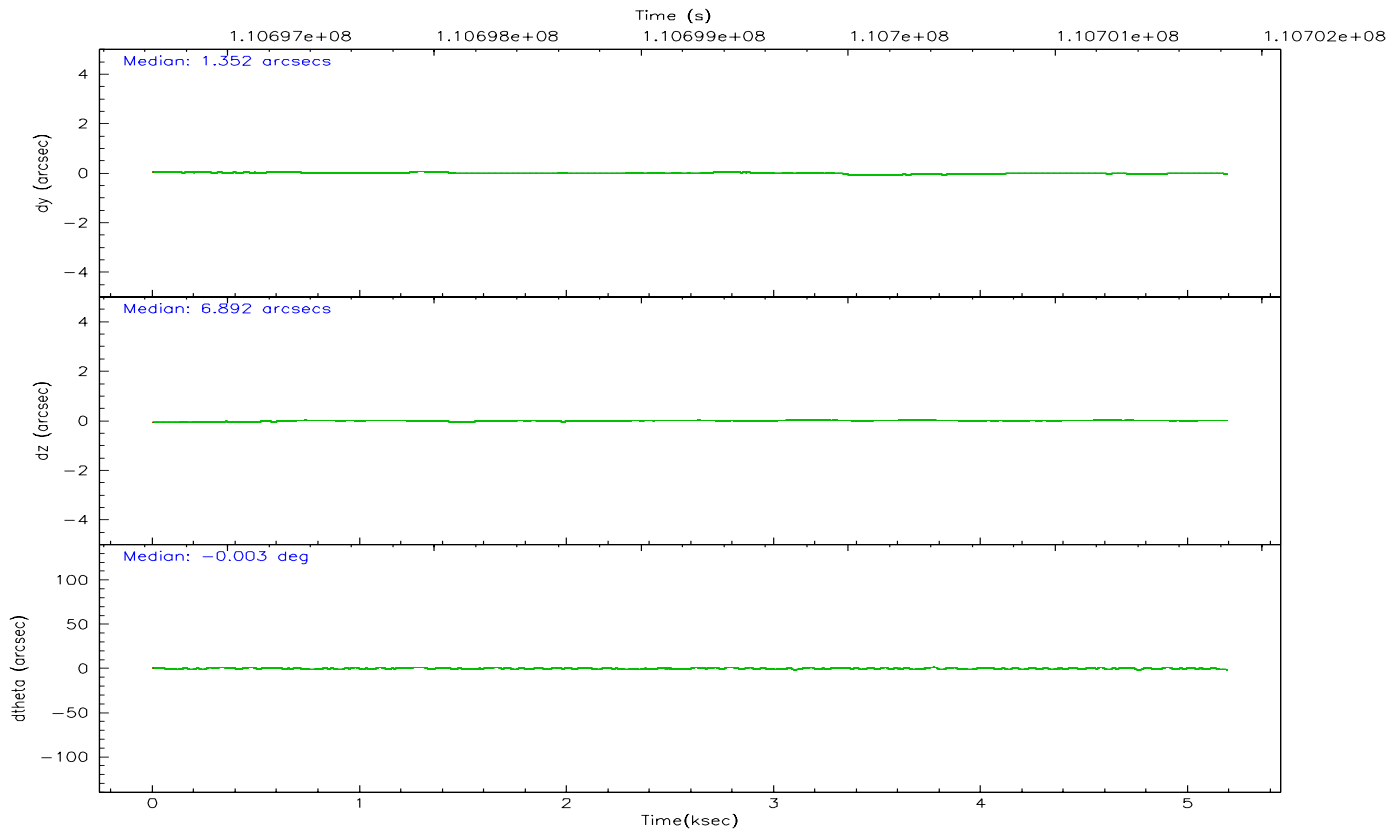
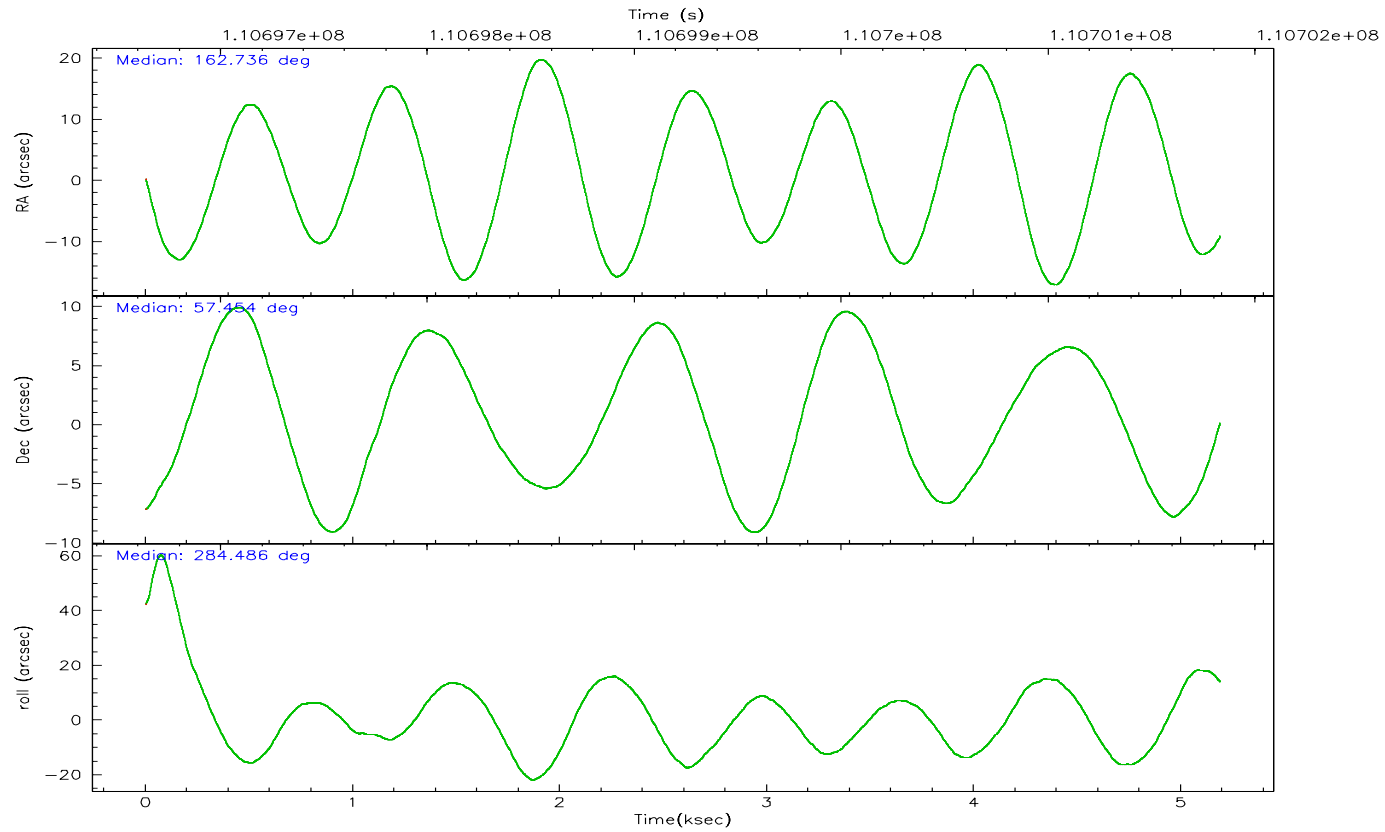
	ccd 0	ccd 1	ccd 2	ccd 3	ccd 6	ccd 8
grade 0 events	1412	1393	1441	1416	1413	2330
	4%	4%	4%	4%	4%	5%
grade 1 events	13	16	12	14	15	27
	0%	0%	0%	0%	0%	0%
grade 2 events	742	715	704	698	685	1794
	2%	2%	2%	2%	2%	4%
grade 3 events	383	358	317	339	356	807
	1%	1%	1%	1%	1%	2%
grade 4 events	313	379	341	321	322	706
	1%	1%	1%	0%	1%	1%
grade 5 events	1051	1177	1006	1207	1202	1707
	3%	4%	3%	3%	4%	4%
grade 6 events	635	687	553	563	670	2056
	2%	2%	1%	1%	2%	5%
grade 7 events	24192	23811	25349	27628	24582	30704
	84%	83%	85%	85%	84%	76%

2.2 Compared Parameters

Parameter	Planned	Actual	Parameter	Planned	Actual
Instrument	ACIS	ACIS	Obspar format version number	6	6
Detector	ACIS-012368	ACIS-012368	Obspar file type	PREDICTED	ACTUAL
Grating	NONE	NONE	Obspar update status	NONE	UPDATED
Data mode	FAINT	FAINT	Number of optional ACIS chips dropped	0	0
Observation mode	POINTING	POINTING	On-chip summing requested	N	N
Pointing RA	162.700393	162.7360712732768	Subarray requested	NONE	NONE
Pointing Dec	57.473750	57.45414934308339	Alternating exposures requested	N	N
Pointing Roll	284.321978	284.5005488281679	Primary exposure time	0.000000	3.2
SIM focus pos (mm)	-0.782348	-0.7809083437167272			
SIM defocus (mm)	0	0.001439871863259334			
SIM translation stage pos (mm)	-233.592463	-233.5874344608287			
SIM translation stage offset (mm)	0	-0.005018542100998502			
Observation start time	110696832.184000	110696456.37088			
Observation start date	2001-07-05T05:06:08	2001-07-05T05:00:56			
Observation end time	110701832.184000	110702091.3086			
Observation end date	2001-07-05T06:29:28	2001-07-05T06:34:51			
Read mode	TIMED	TIMED			

2.3 Aspect



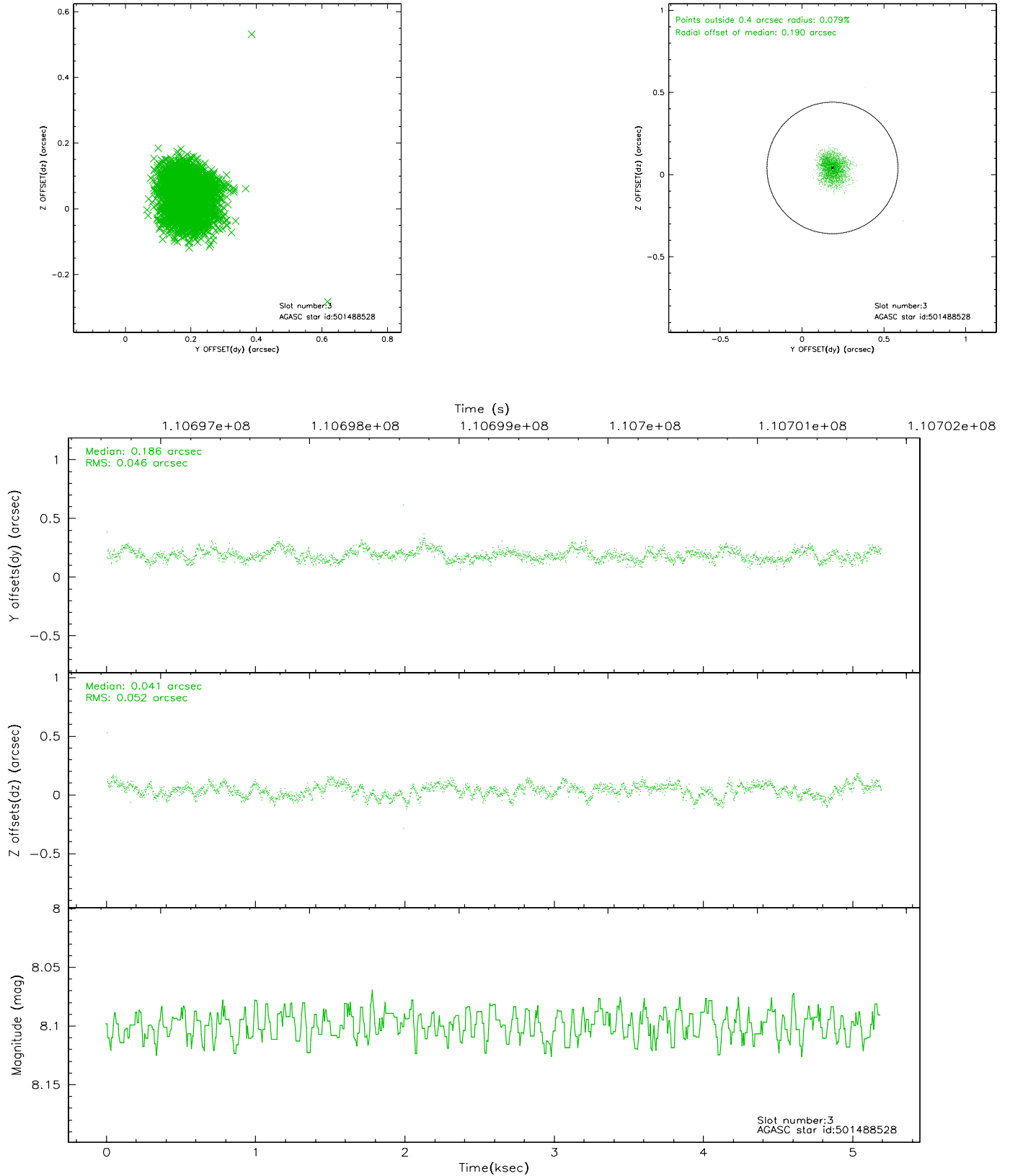


Slot Statistics

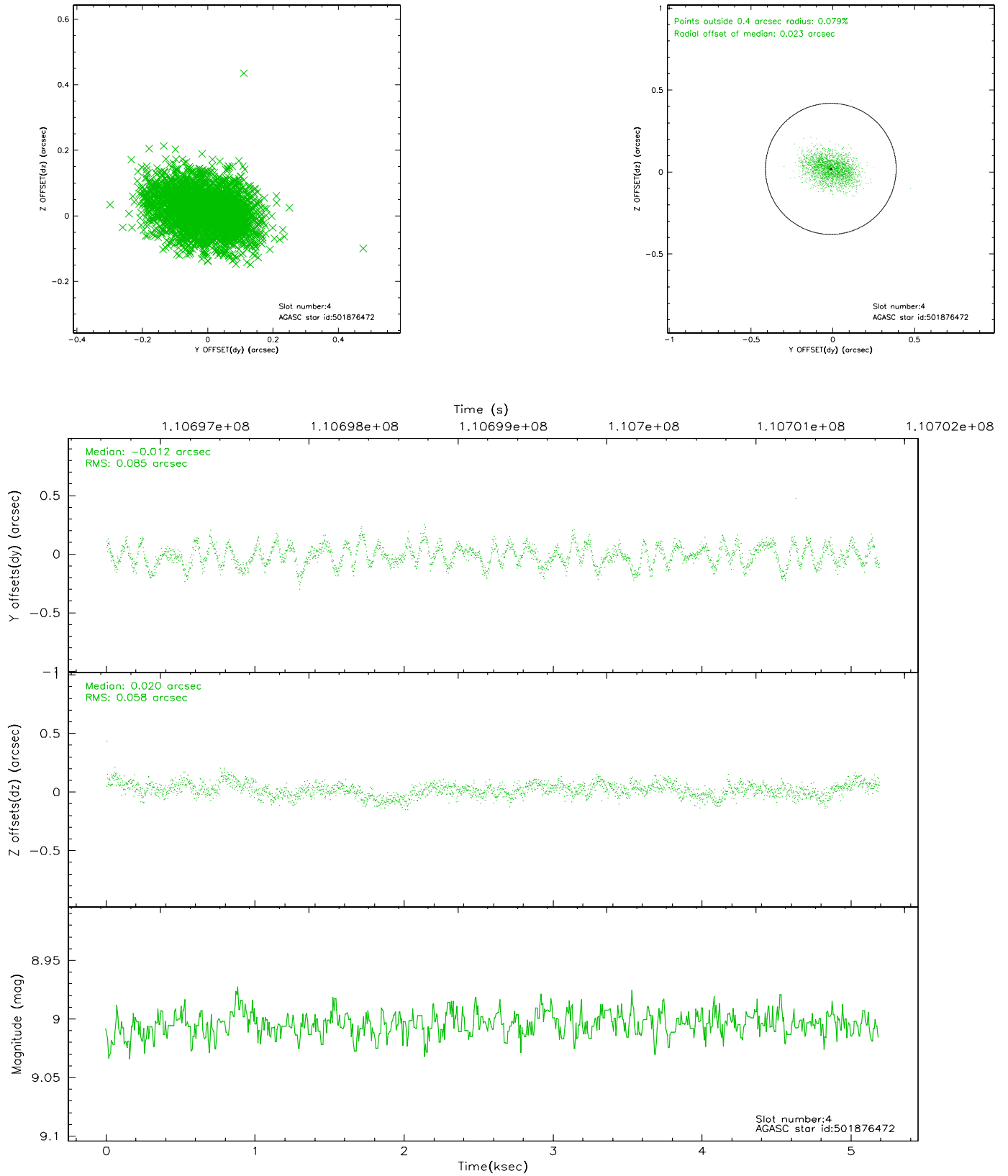
slot	status	id	mag	n_pts	med_dy	med_dz	dr1	dr2	ra	dec	mean_y	mean_z
0	FID	ACIS-I-2	7.16	1266	-0.022	-0.045	0.008	0.014	0.000000	0.000000	-755.70	-836.70
1	FID	ACIS-I-4	7.18	1266	-0.088	0.034	0.005	0.010	0.000000	0.000000	2157.75	1069.00
2	FID	ACIS-I-5	7.23	1266	0.010	0.080	0.008	0.013	0.000000	0.000000	-1808.01	1068.18
3	GUIDE	501488528	8.10	2532	0.186	0.041	0.073	0.115	162.150935	57.312270	295.27	-1177.06
4	GUIDE	501876472	9.00	2532	-0.012	0.020	0.110	0.175	163.621724	57.867447	-949.04	2062.65
5	GUIDE	501877264	9.31	2531	-0.033	0.279	0.088	0.145	163.254394	57.702218	-538.39	1238.71
6	GUIDE	501487600	10.34	2529	0.149	0.239	0.218	0.359	161.712206	56.979739	1230.45	-2313.10
7	BAD	501487624	10.42	2393	-0.303	-0.597	0.153	0.244	163.702908	57.008909	2094.01	1494.15

2.4 Star Slots

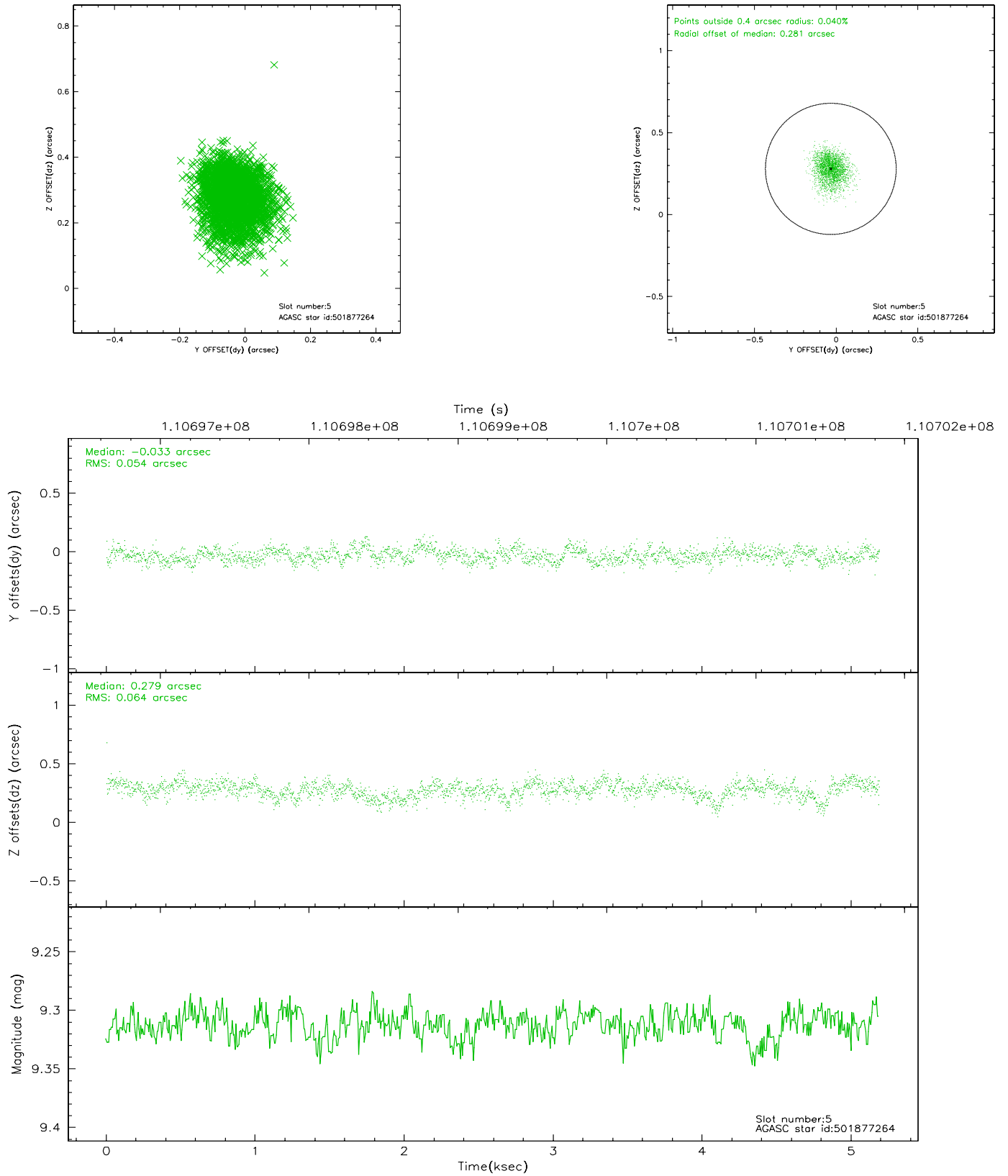
2.4.1 Slot 3



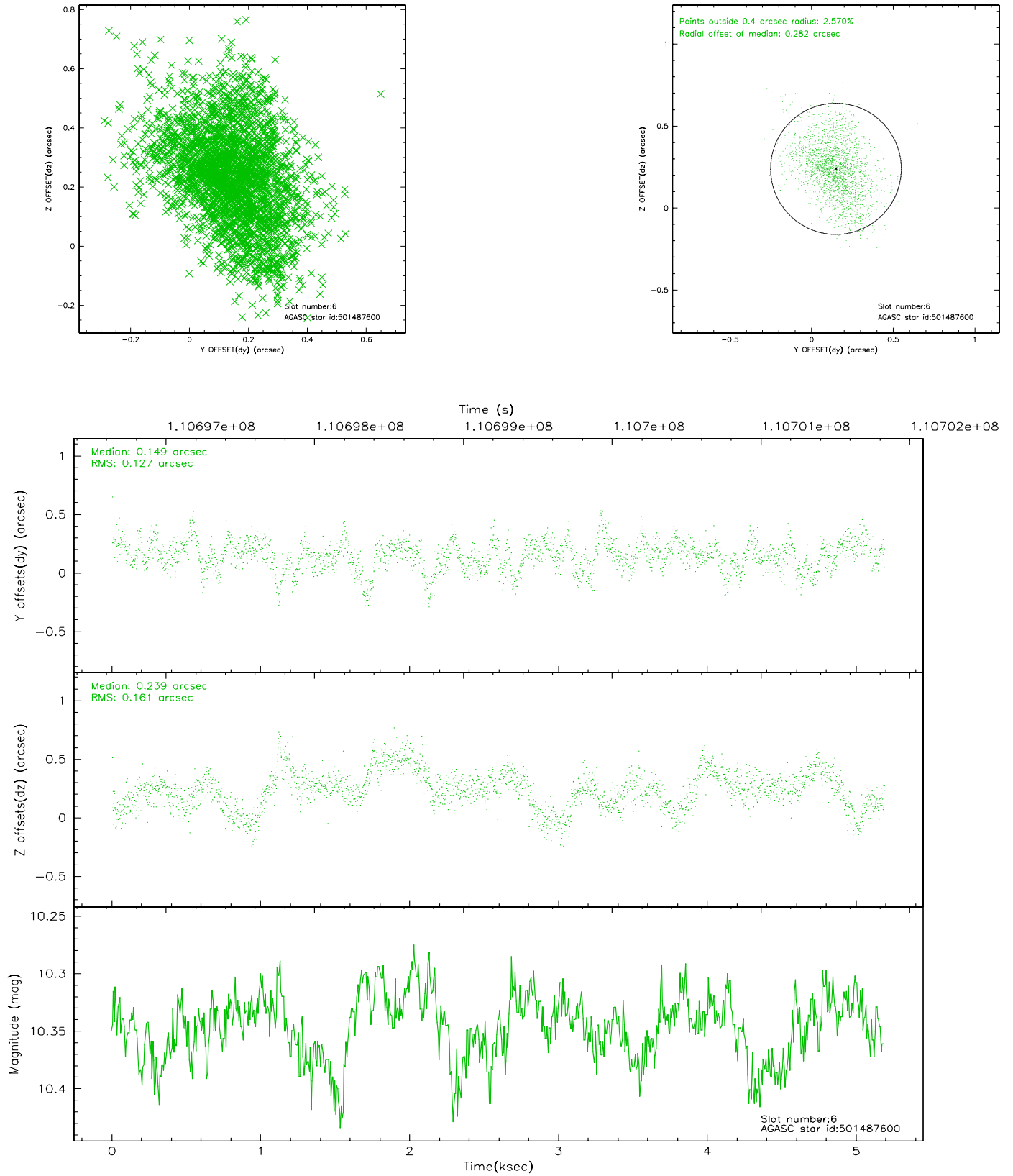
2.4.2 Slot 4



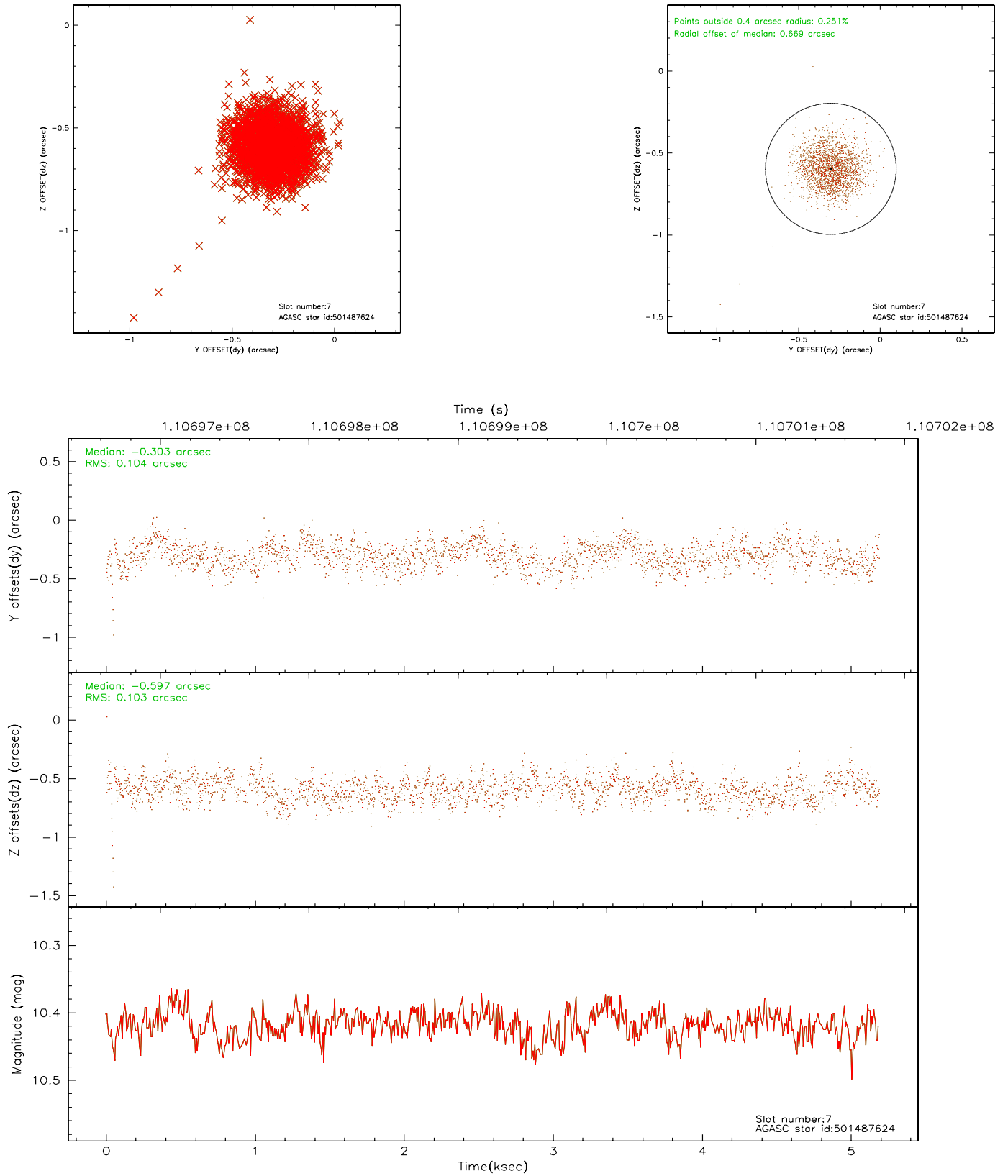
2.4.3 Slot 5



2.4.4 Slot 6

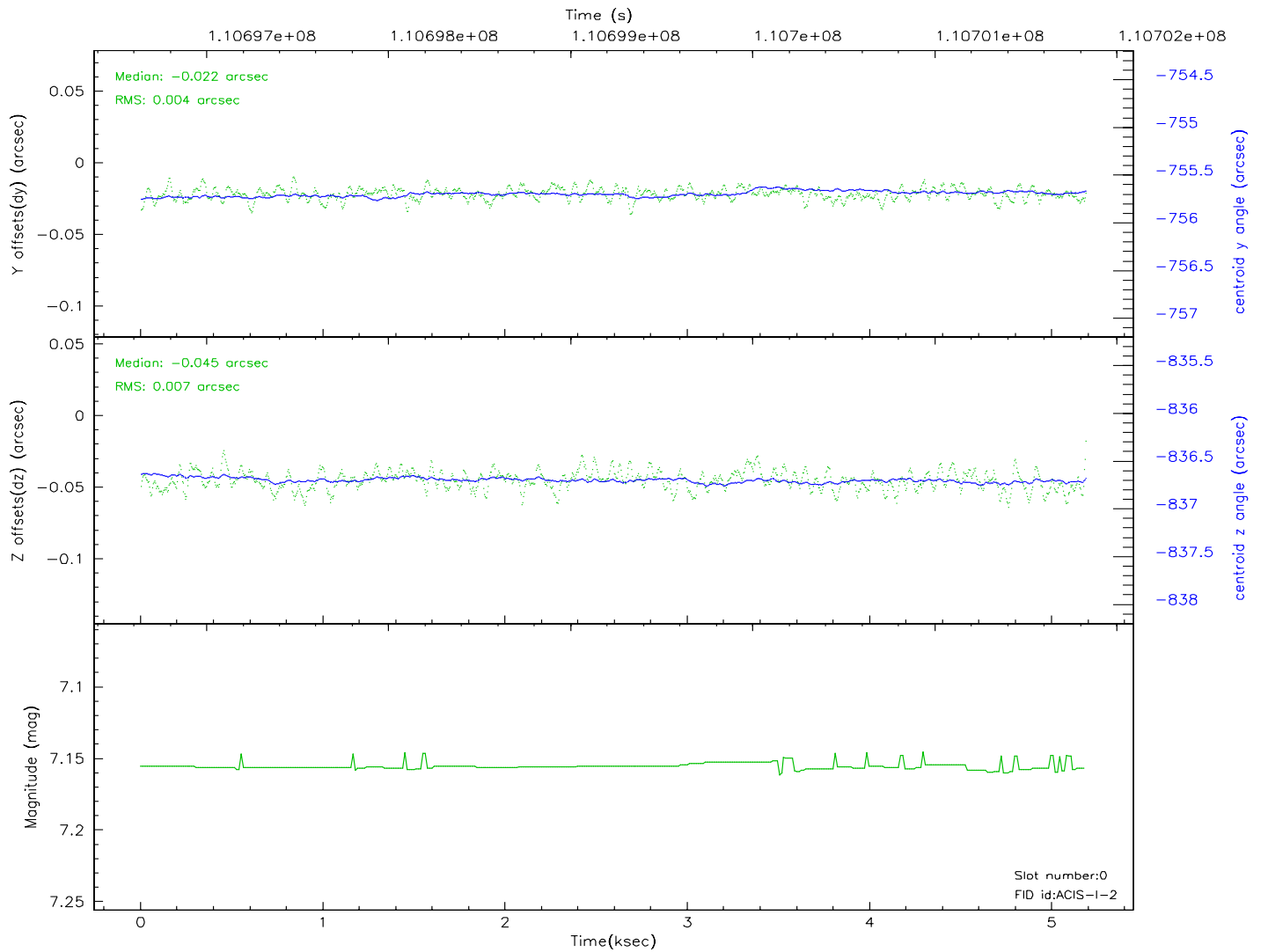
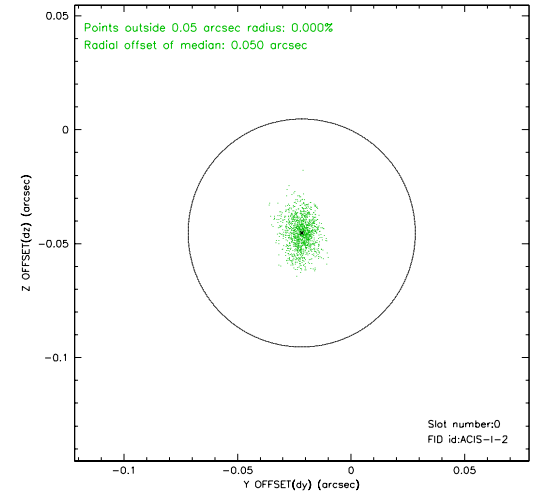
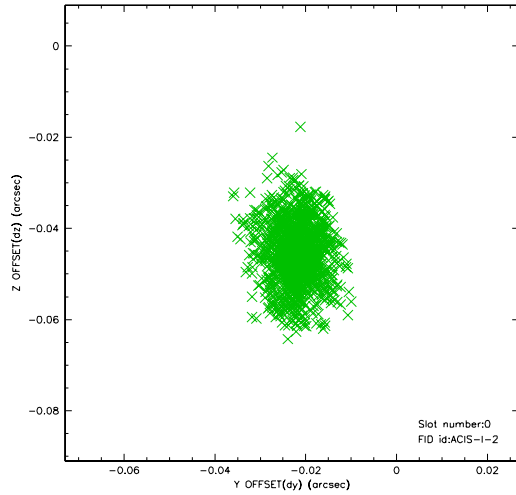


2.4.5 Slot 7

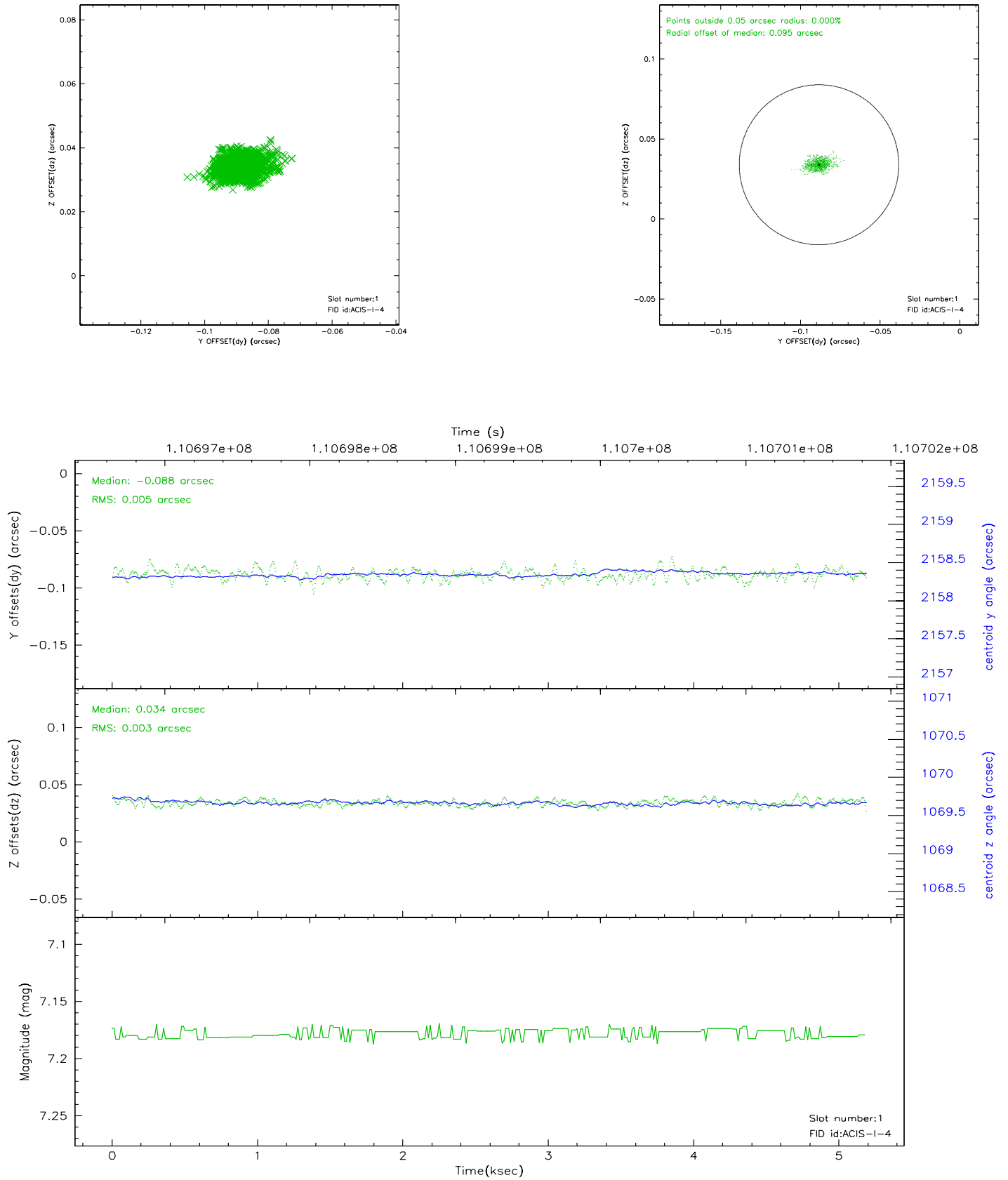


2.5 FID Slots

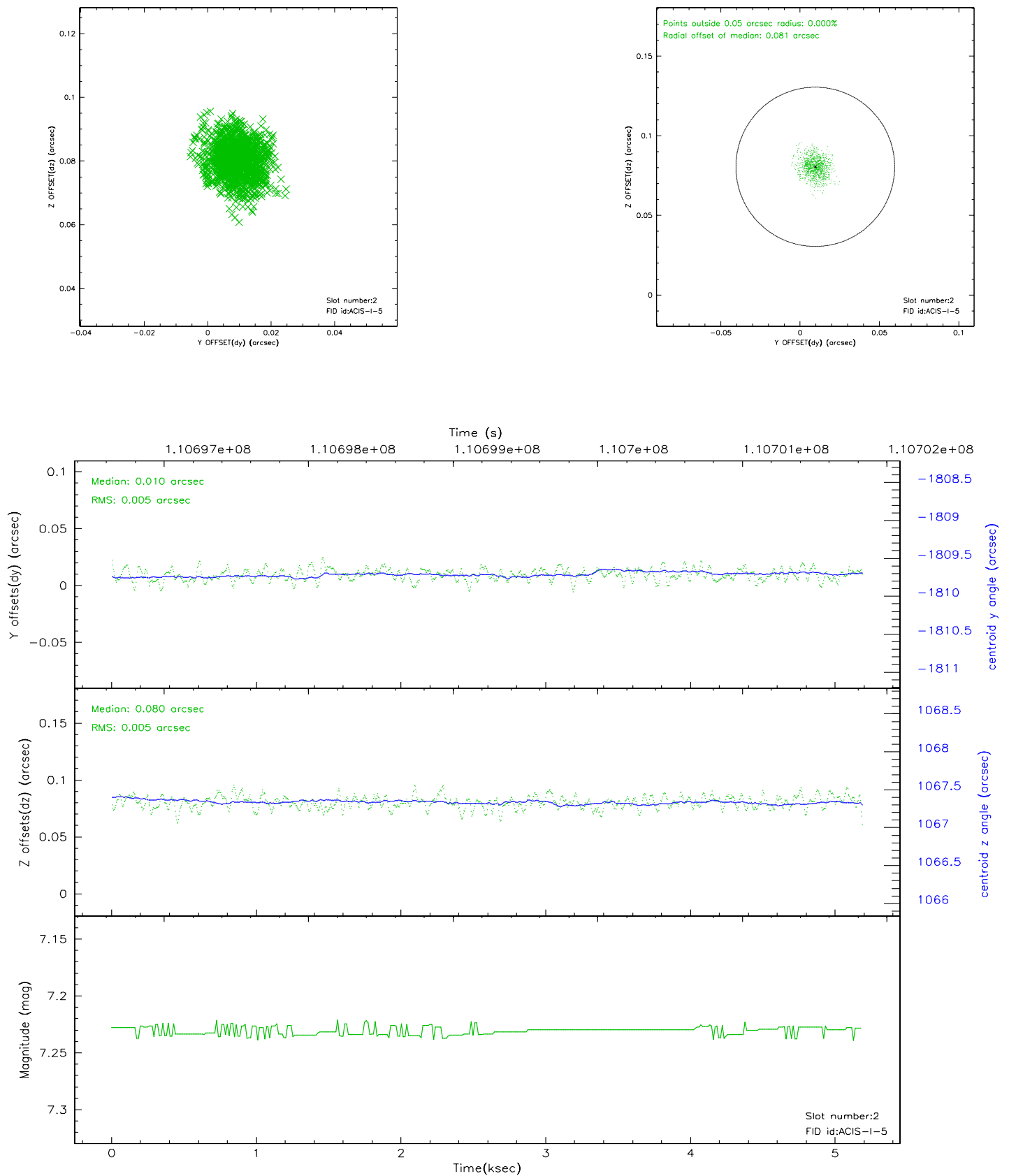
2.5.1 Slot 0



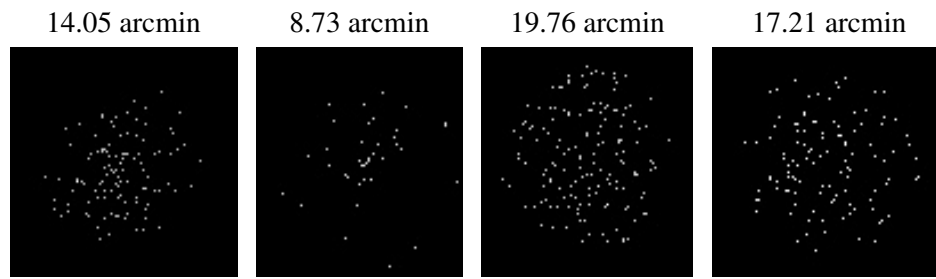
2.5.2 Slot 1



2.5.3 Slot 2



3 Point Sources



A Summary

A.1 Status

V&V Scientist	Beth Sundheim
V&V Date (YYYY-MM-DD)	2006.12.11
V&V Edition	1
V&V Disposition and Status	OK
V&V Charge Time	4.8

A.2 Comments

The guide star in slot 7 was removed from the aspect solution due to poor data quality. The aspect solution is not expected to be degraded by removing one guide star or fid light from the solution.