

V&V Reference Report

L2 ASCDS Version : 7.6.9

Observation 1676 - L2 Version 001
Chandra X-Ray Center

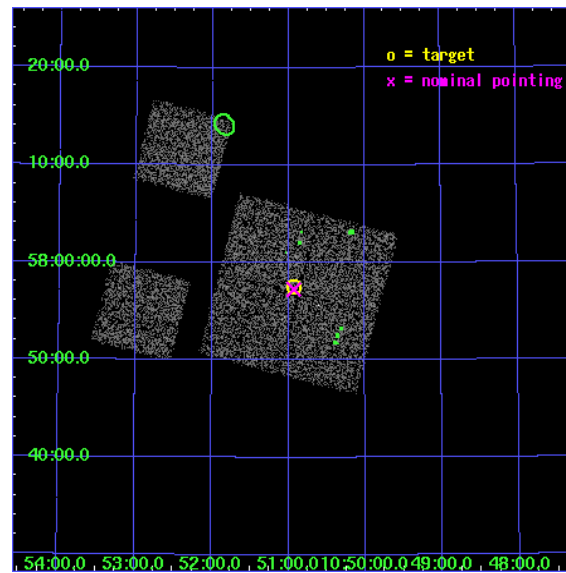
L2 Processing Date : Dec 11 2006

Contents

1	Front	2
2	OBI	3
2.1	OBI	3
2.1.1	Images	3
2.1.2	Bias	3
2.1.3	Parameters	4
2.1.4	Events	4
2.2	Compared Parameters	5
2.3	Aspect	6
2.4	Star Slots	9
2.4.1	Slot 3	9
2.4.2	Slot 4	10
2.4.3	Slot 5	11
2.4.4	Slot 6	12
2.4.5	Slot 7	13
2.5	FID Slots	14
2.5.1	Slot 0	14
2.5.2	Slot 1	15
2.5.3	Slot 2	16
3	Point Sources	17
A	Summary	18
A.1	Status	18
A.2	Comments	18

1 Front

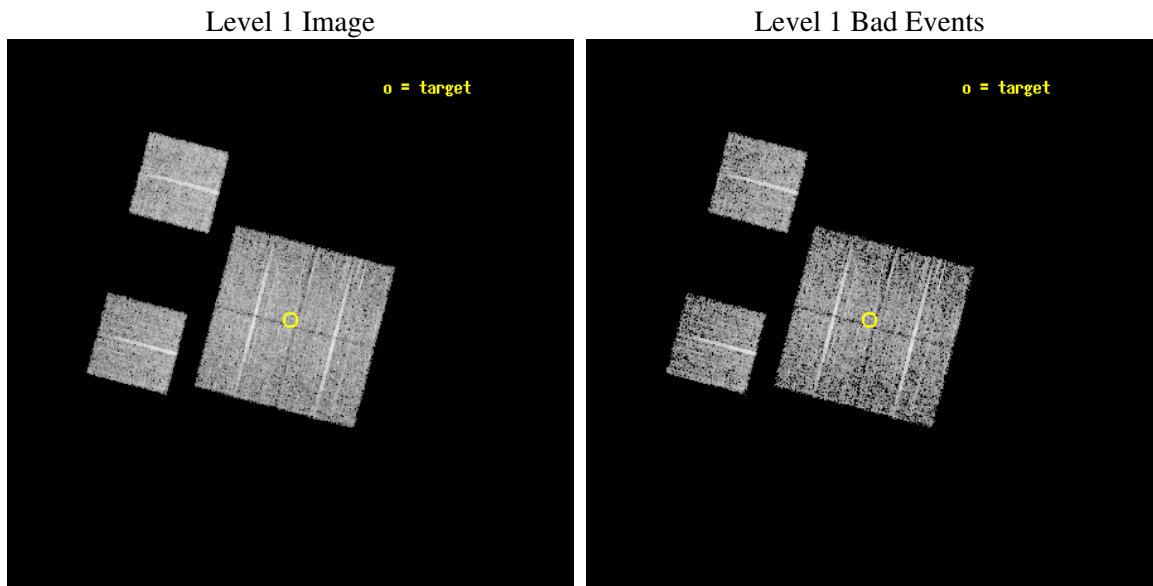
seq_num	900035
obs_id	1676
title	LOCKMAN HOLE SHALLOW SURVEY
observer	Dr. Stephen Murray
object	LOCKMAN HOLE #19
dtcycle	0
cycle	P
ra_targ	162.733333
dec_targ	57.958889
ra_nom	162.73197545402
dec_nom	57.954229625702
roll_nom	284.78615333529
revision	2
ontime	4758.4000044316
livetime	4698.146278411
ontime0	4748.677153632
ontime1	4758.4000044316
ontime2	4742.1951533854
ontime3	4758.4000044316
ontime6	4758.4000044316
ontime8	4758.4000044316
l2events	18469



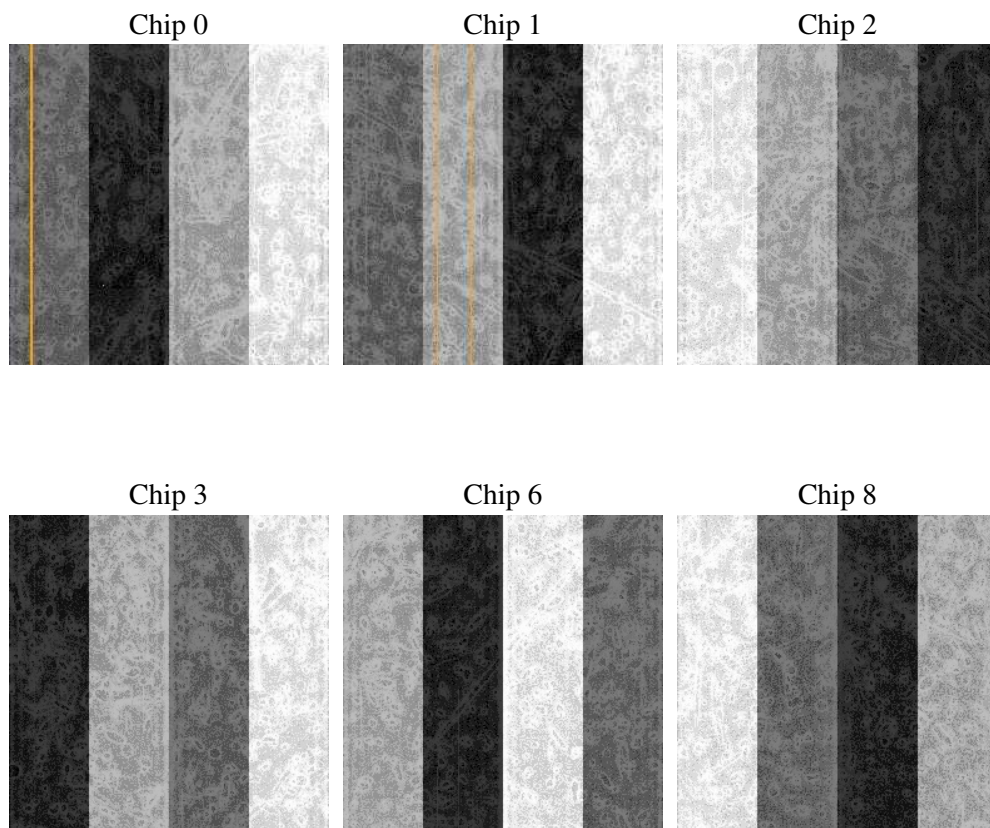
2 OBI

2.1 OBI

2.1.1 Images



2.1.2 Bias



2.1.3 Parameters

obi_num	0
ascdsver	7.6.9
caldsver	3.2.4
date	2006-12-11T16:53:22
revision	2

sched_exp_time	5000.000000
ontime	4764.2655760497
ontime0	4754.5427053422
ontime1	4764.2655262202
ontime2	4748.0607050955
ontime3	4764.2655760497
ontime6	4764.2655760497
ontime8	4764.2655760497
l1events	187458

2.1.4 Events

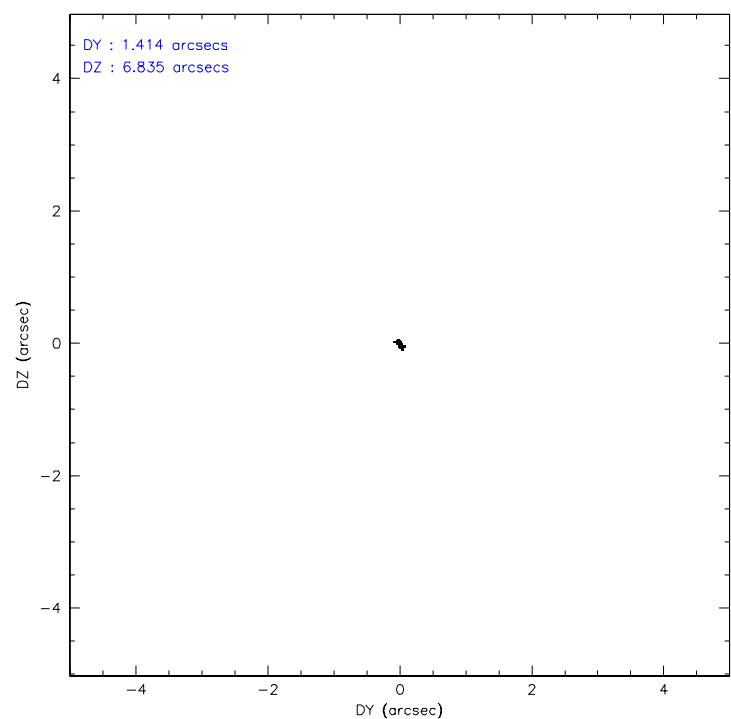
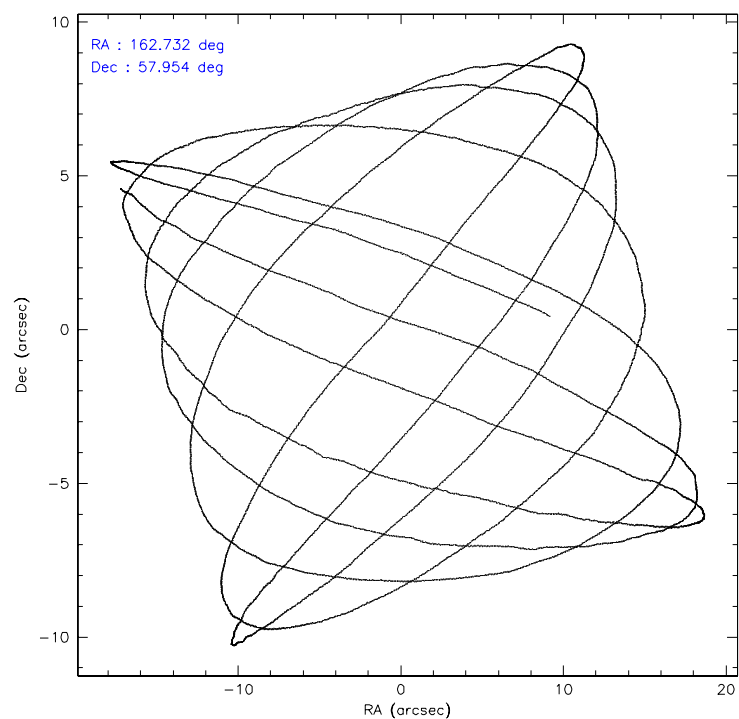
	ccd 0	ccd 1	ccd 2	ccd 3	ccd 6	ccd 8
level 1 events	27885	29500	30312	30141	30094	39526
rejected events	24175	25736	26853	26622	26736	31993
rejected %	86%	87%	88%	88%	88%	80%

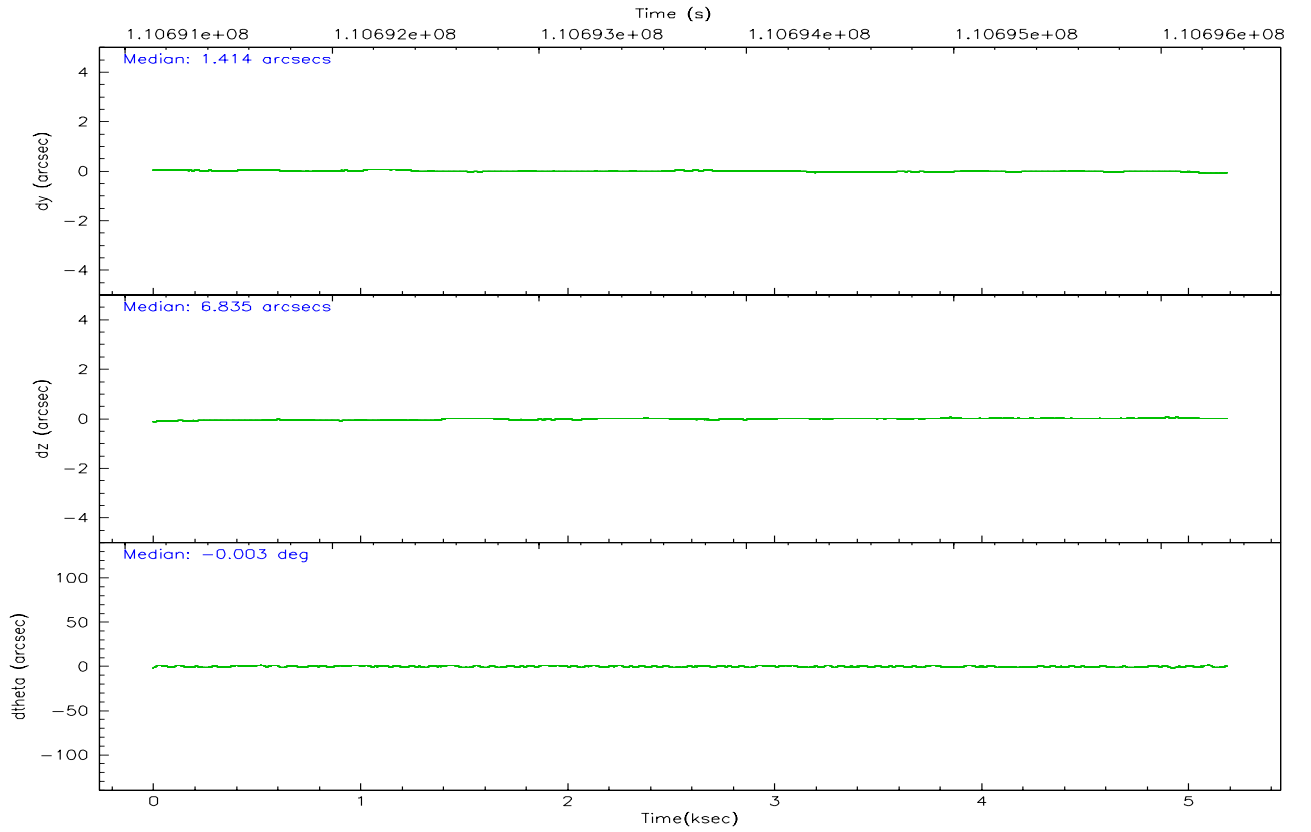
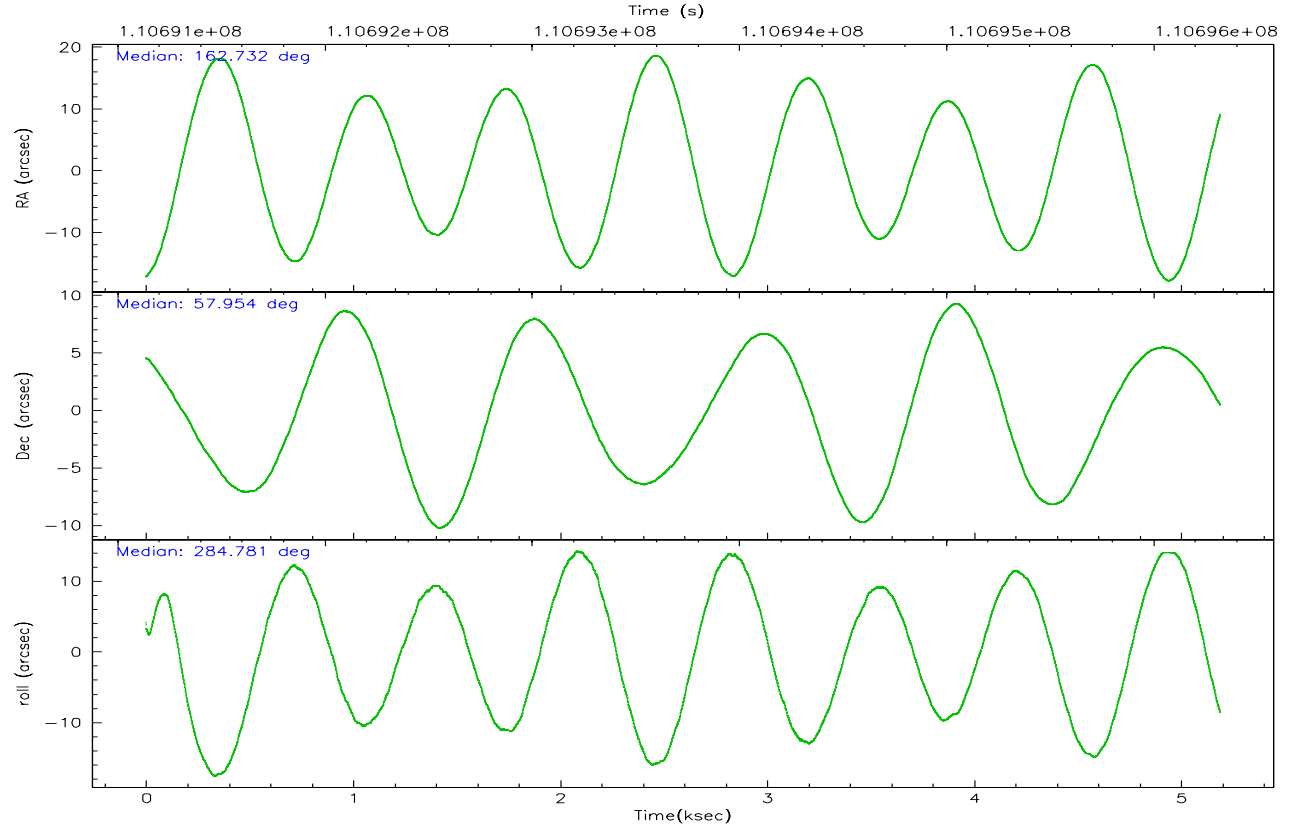
	ccd 0	ccd 1	ccd 2	ccd 3	ccd 6	ccd 8
grade 0 events	1600	1499	1545	1511	1295	2356
	5%	5%	5%	5%	4%	5%
grade 1 events	17	15	12	13	15	29
	0%	0%	0%	0%	0%	0%
grade 2 events	782	766	696	700	683	1668
	2%	2%	2%	2%	2%	4%
grade 3 events	370	389	308	382	343	755
	1%	1%	1%	1%	1%	1%
grade 4 events	338	373	310	317	356	751
	1%	1%	1%	1%	1%	1%
grade 5 events	1139	1149	1053	1149	1261	1572
	4%	3%	3%	3%	4%	3%
grade 6 events	628	743	602	613	686	2004
	2%	2%	1%	2%	2%	5%
grade 7 events	23011	24566	25786	25456	25455	30391
	82%	83%	85%	84%	84%	76%

2.2 Compared Parameters

Parameter	Planned	Actual	Parameter	Planned	Actual
Instrument	ACIS	ACIS	Obspar format version number	6	6
Detector	ACIS-012368	ACIS-012368	Obspar file type	PREDICTED	ACTUAL
Grating	NONE	NONE	Obspar update status	NONE	UPDATED
Data mode	FAINT	FAINT	Number of optional ACIS chips dropped	0	0
Observation mode	POINTING	POINTING	On-chip summing requested	N	N
Pointing RA	162.695564	162.7319754540237	Subarray requested	NONE	NONE
Pointing Dec	57.973638	57.95422962570193	Alternating exposures requested	N	N
Pointing Roll	284.608336	284.7861533352884	Primary exposure time	0.000000	3.2
SIM focus pos (mm)	-0.782348	-0.7809083437167272			
SIM defocus (mm)	0	0.001439871863259334			
SIM translation stage pos (mm)	-233.592463	-233.5874344608287			
SIM translation stage offset (mm)	0	-0.005018542100998502			
Observation start time	110691322.184000	110690943.40816			
Observation start date	2001-07-05T03:34:18	2001-07-05T03:29:03			
Observation end time	110696322.184000	110696456.37088			
Observation end date	2001-07-05T04:57:38	2001-07-05T05:00:56			
Read mode	TIMED	TIMED			

2.3 Aspect



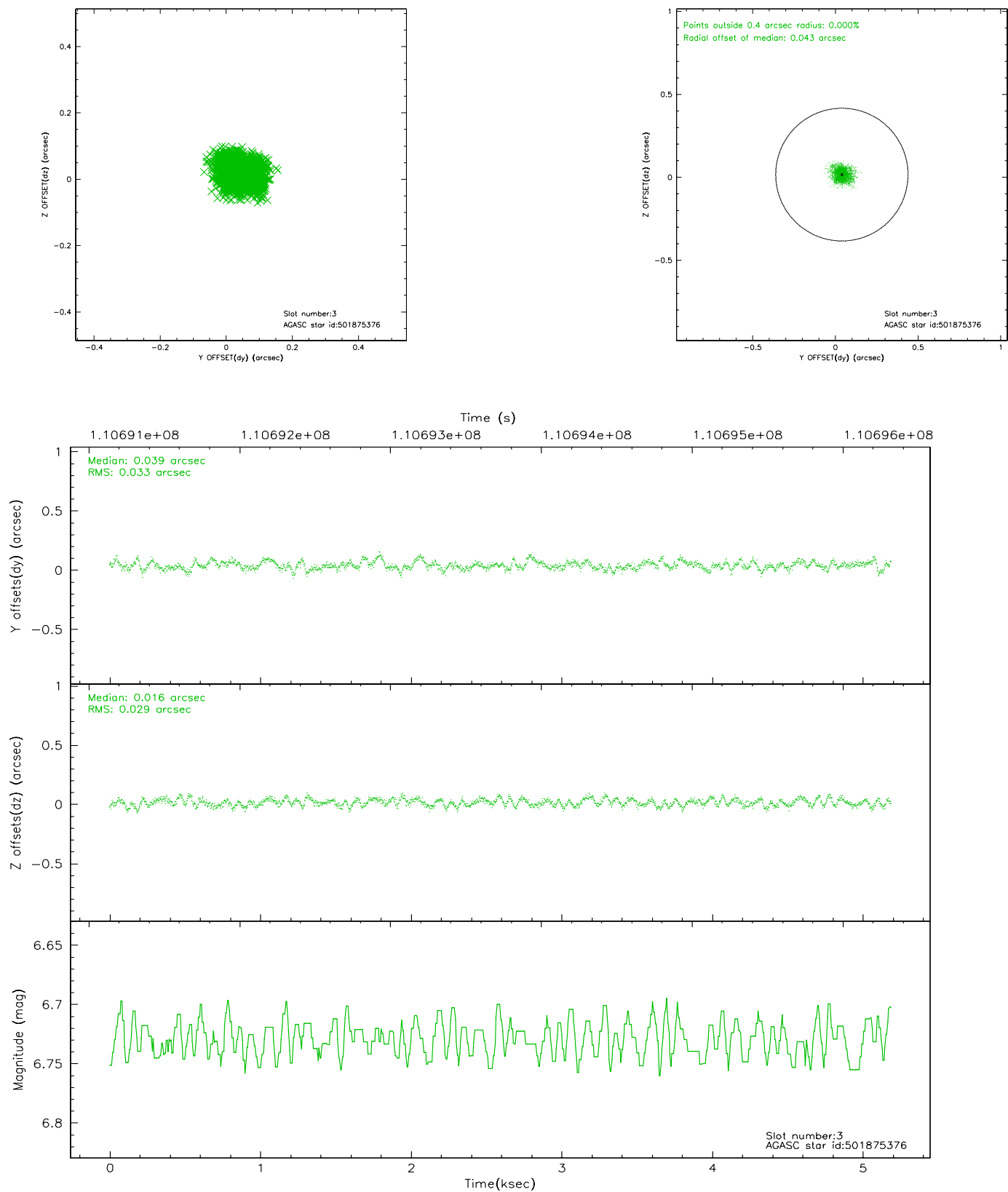


Slot Statistics

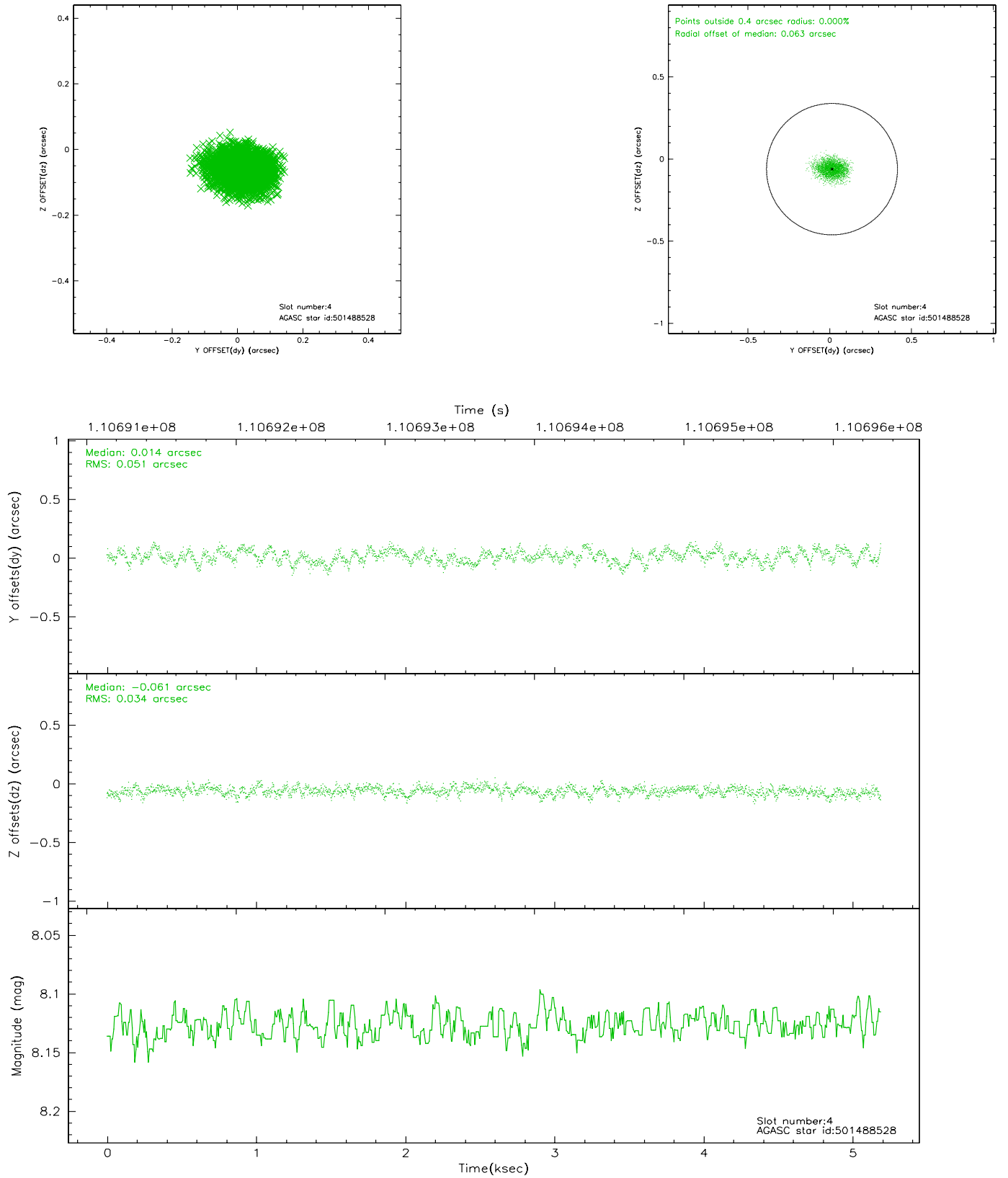
slot	status	id	mag	n_pts	med_dy	med_dz	dr1	dr2	ra	dec	mean_y	mean_z
0	FID	ACIS-I-2	7.15	1266	-0.024	-0.057	0.009	0.017	0.000000	0.000000	-755.76	-836.65
1	FID	ACIS-I-4	7.18	1266	-0.085	0.038	0.005	0.008	0.000000	0.000000	2157.68	1069.08
2	FID	ACIS-I-5	7.23	1266	0.008	0.088	0.008	0.015	0.000000	0.000000	-1808.08	1068.25
3	GUIDE	501875376	6.73	2533	0.039	0.016	0.046	0.078	164.111621	57.502963	2302.60	2230.56
4	GUIDE	501488528	8.13	2532	0.014	-0.061	0.066	0.105	162.150935	57.312270	2033.97	-1622.89
5	GUIDE	501876472	8.99	2533	-0.008	-0.000	0.084	0.134	163.621724	57.867447	806.10	1622.21
6	GUIDE	501875064	9.12	2533	-0.035	-0.017	0.071	0.115	163.017696	58.369846	-1227.98	949.03
7	GUIDE	501877264	9.30	2530	-0.010	0.062	0.068	0.112	163.254394	57.702218	1211.76	795.74

2.4 Star Slots

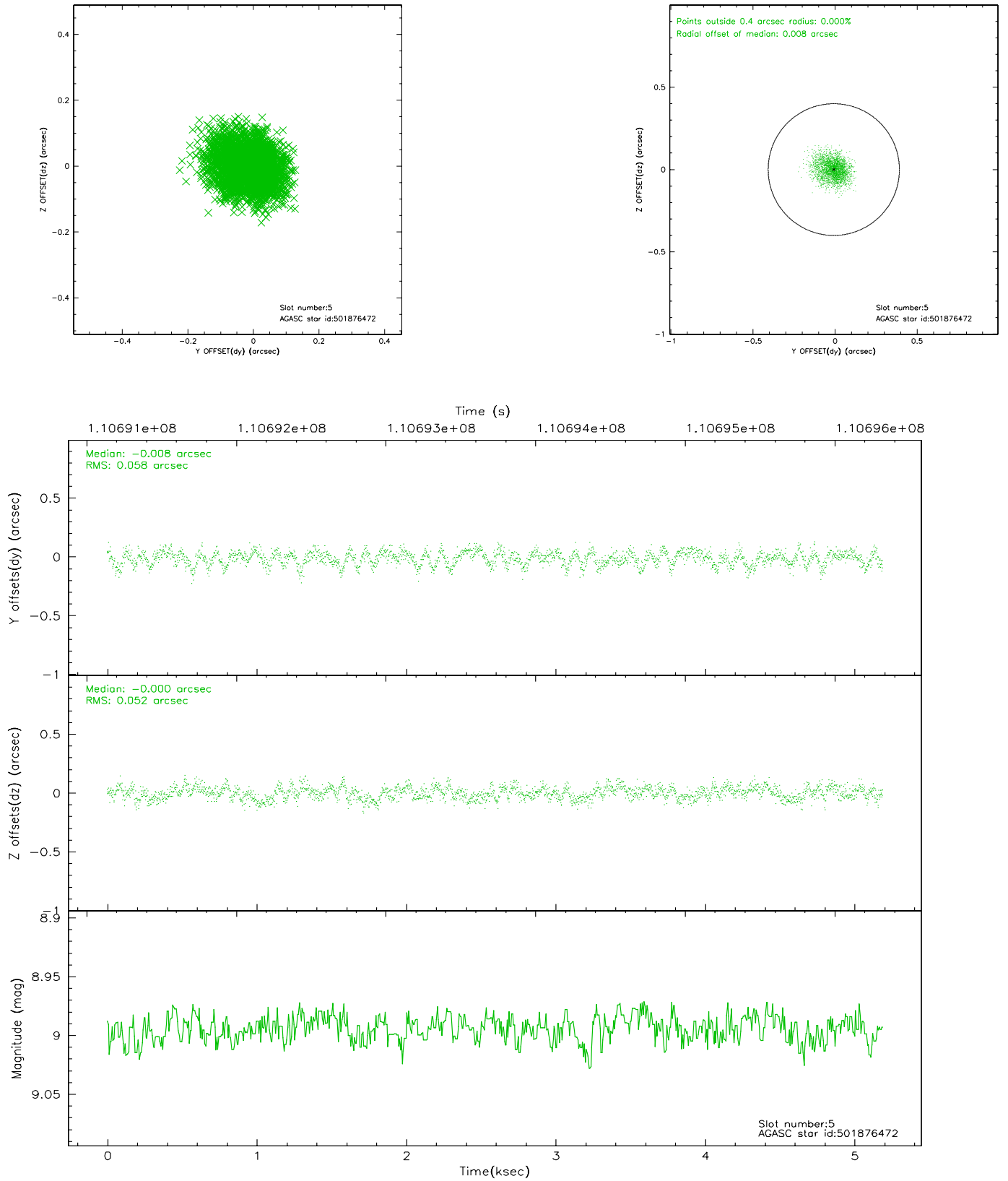
2.4.1 Slot 3



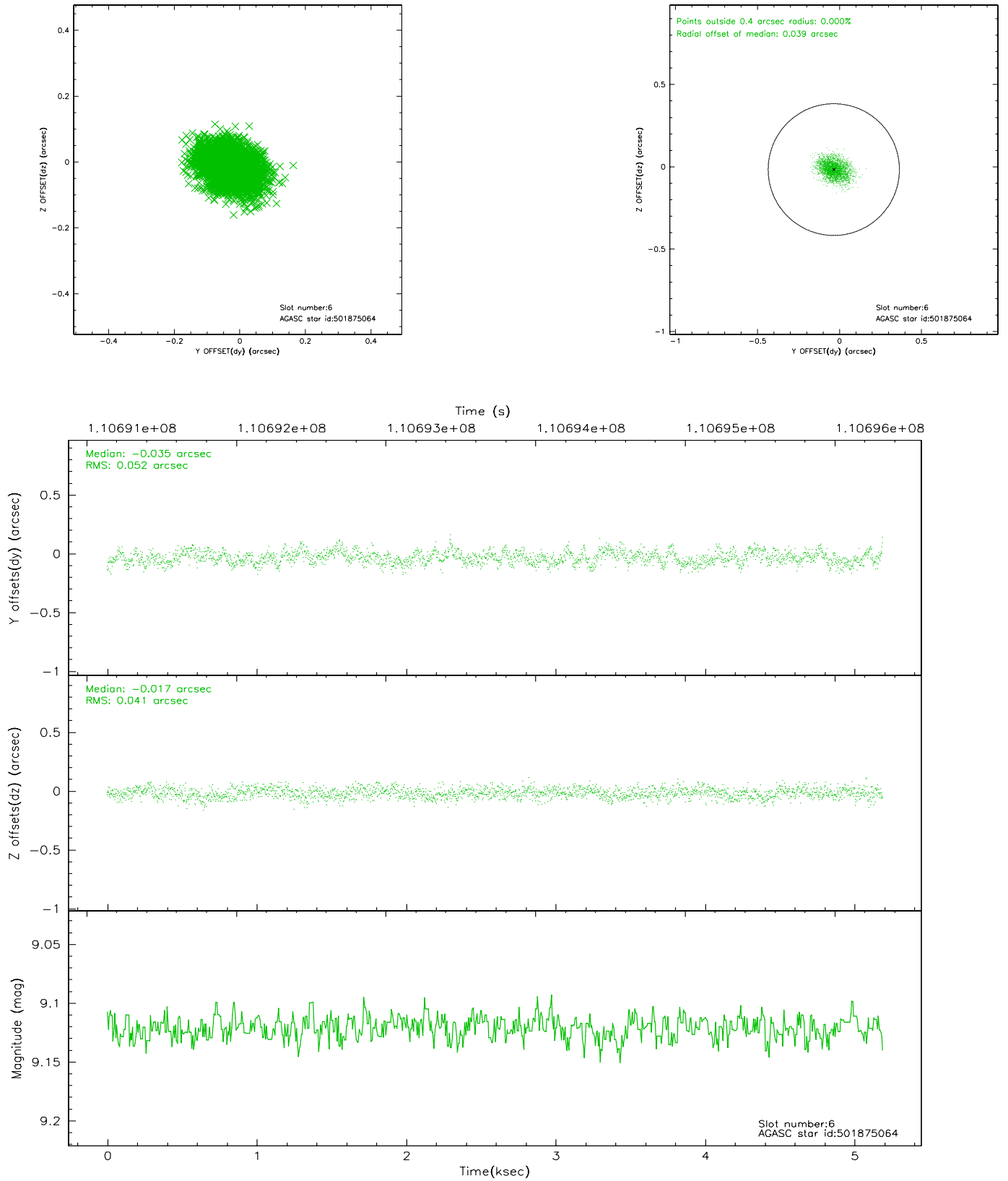
2.4.2 Slot 4



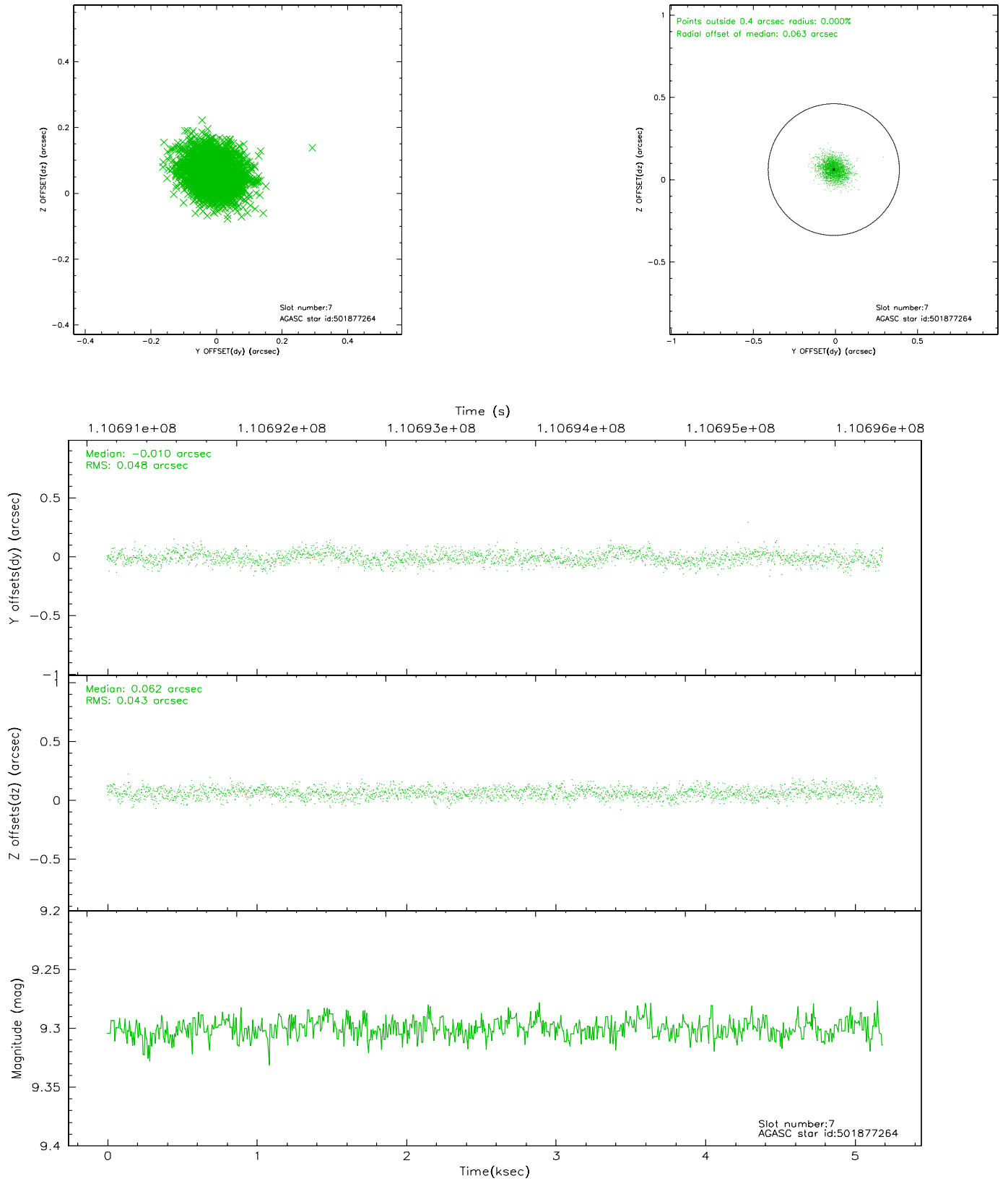
2.4.3 Slot 5



2.4.4 Slot 6

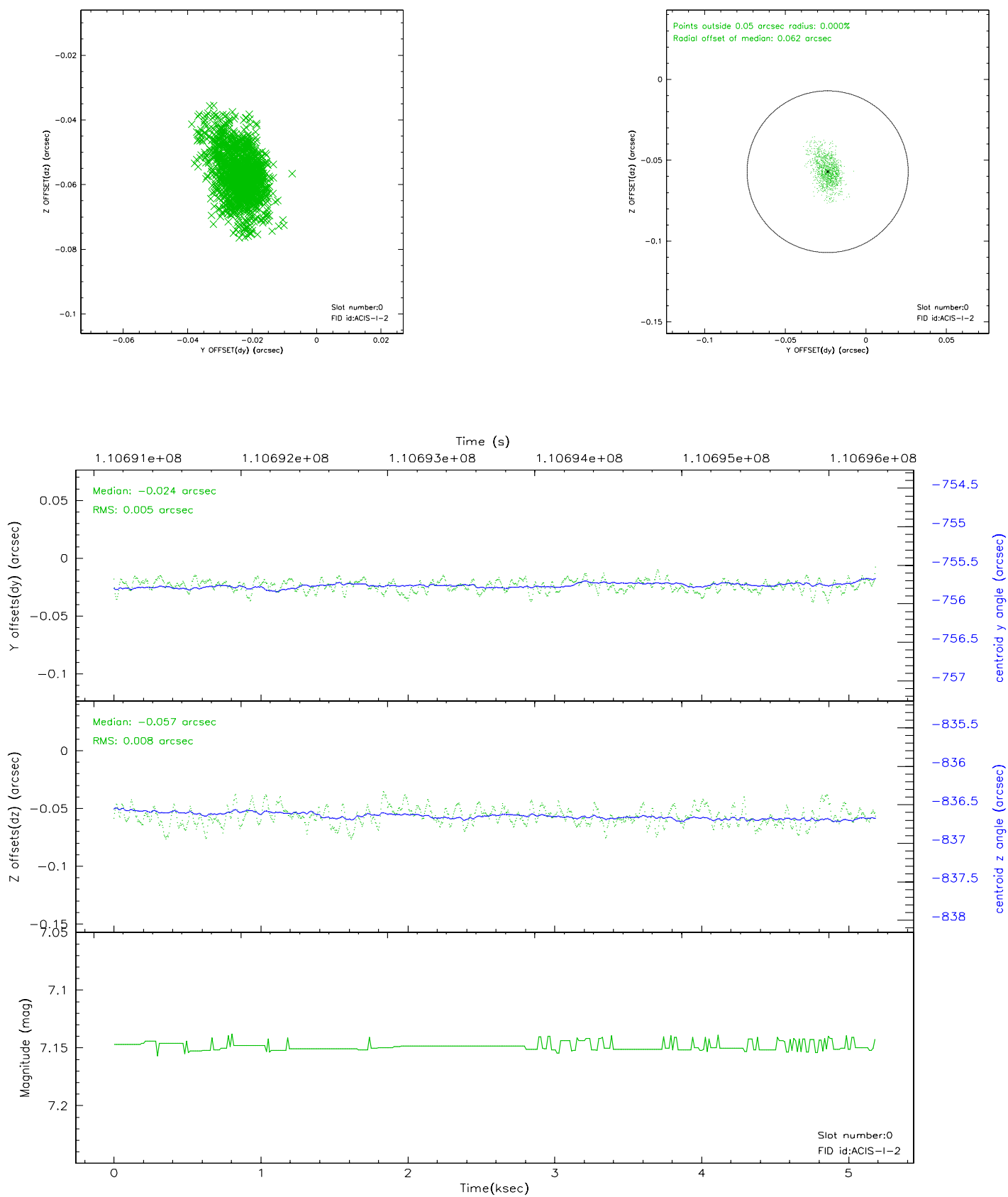


2.4.5 Slot 7

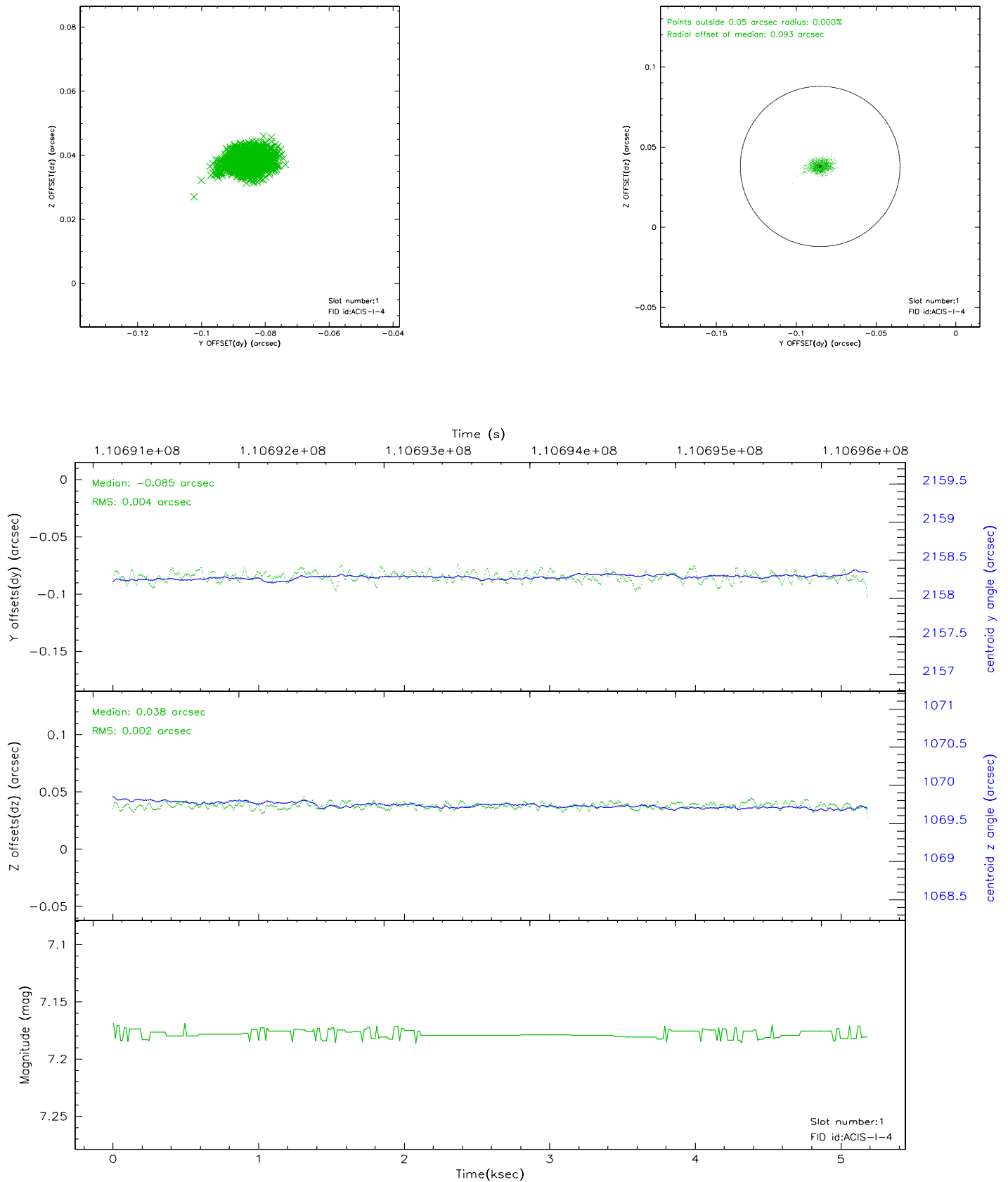


2.5 FID Slots

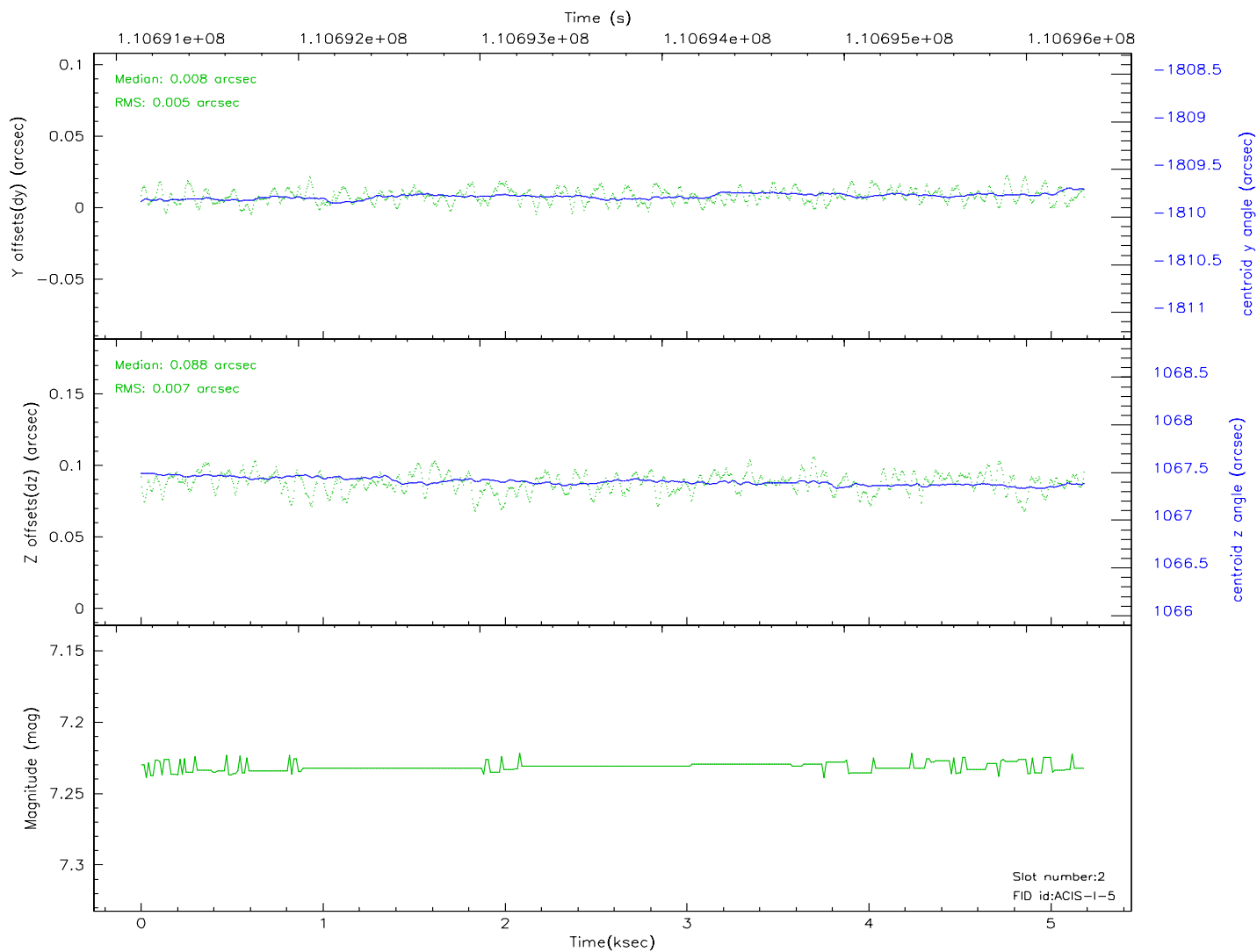
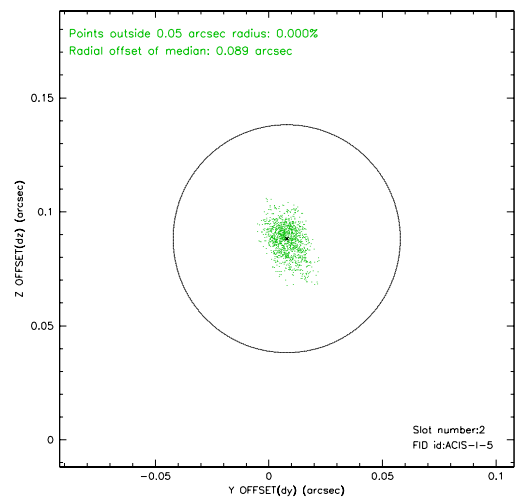
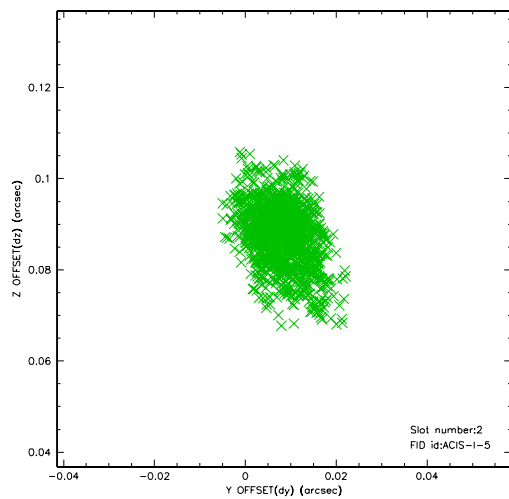
2.5.1 Slot 0



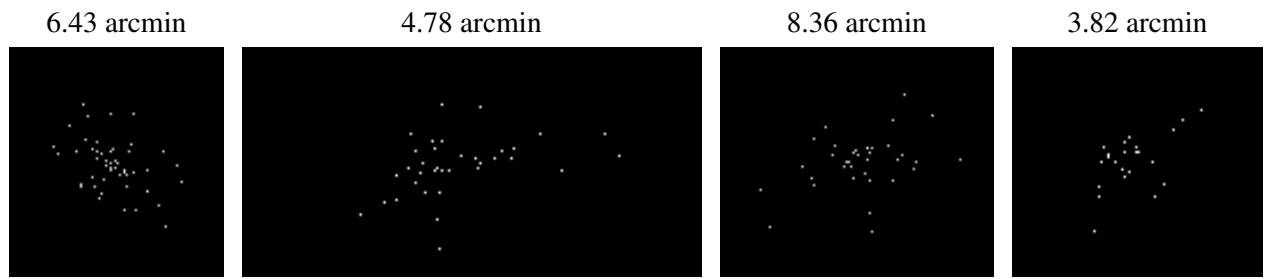
2.5.2 Slot 1



2.5.3 Slot 2



3 Point Sources



A Summary

A.1 Status

V&V Scientist	Beth Sundheim
V&V Date (YYYY-MM-DD)	2006.12.11
V&V Edition	1
V&V Disposition and Status	OK
V&V Charge Time	4.761

A.2 Comments