

# V&V Reference Report

## L2 ASCDS Version : 7.6.9

Observation 1675 - L2 Version 001  
Chandra X-Ray Center

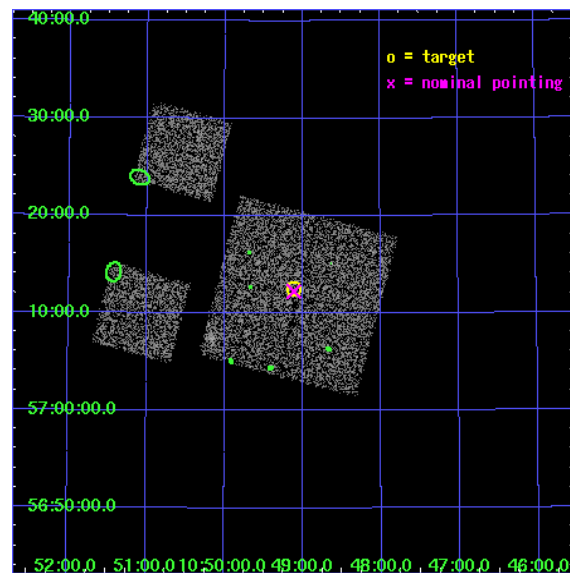
L2 Processing Date : Dec 11 2006

## Contents

<b>1</b>	<b>Front</b>	<b>2</b>
<b>2</b>	<b>OBI</b>	<b>3</b>
2.1	OBI . . . . .	3
2.1.1	Images . . . . .	3
2.1.2	Bias . . . . .	3
2.1.3	Parameters . . . . .	4
2.1.4	Events . . . . .	4
2.2	Compared Parameters . . . . .	5
2.3	Aspect . . . . .	6
2.4	Star Slots . . . . .	9
2.4.1	Slot 3 . . . . .	9
2.4.2	Slot 4 . . . . .	10
2.4.3	Slot 5 . . . . .	11
2.4.4	Slot 6 . . . . .	12
2.4.5	Slot 7 . . . . .	13
2.5	FID Slots . . . . .	14
2.5.1	Slot 0 . . . . .	14
2.5.2	Slot 1 . . . . .	15
2.5.3	Slot 2 . . . . .	16
<b>3</b>	<b>Point Sources</b>	<b>17</b>
<b>A</b>	<b>Summary</b>	<b>18</b>
A.1	Status . . . . .	18
A.2	Comments . . . . .	18

# 1 Front

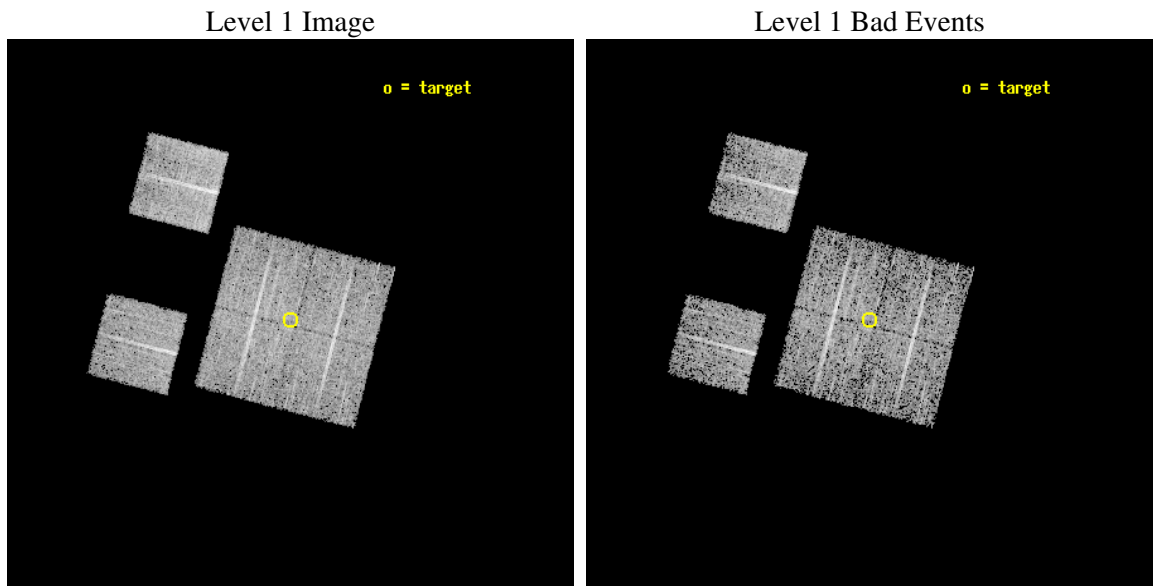
seq_num	900034
obs_id	1675
title	LOCKMAN HOLE SHALLOW SURVEY
observer	Dr. Stephen Murray
object	LOCKMAN HOLE #4
dtcycle	0
cycle	P
ra_targ	162.279167
dec_targ	57.208889
ra_nom	162.27802892012
dec_nom	57.204178992835
roll_nom	284.62009411057
revision	2
ontime	4758.4000044316
livetime	4698.146278411
ontime0	4758.4000044316
ontime1	4758.4000044316
ontime2	4758.4000044316
ontime3	4758.4000044316
ontime6	4758.4000044316
ontime8	4758.4000044316
l2events	18207



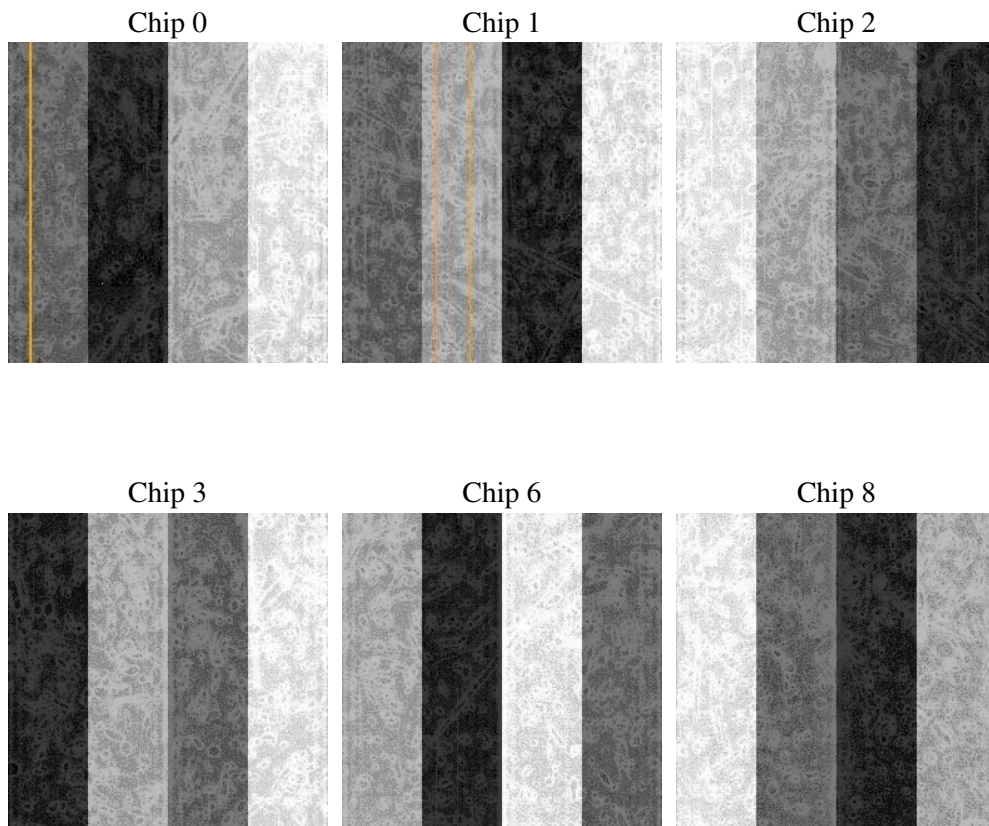
## 2 OBI

### 2.1 OBI

#### 2.1.1 Images



#### 2.1.2 Bias



### 2.1.3 Parameters

obi_num	0
ascdsver	7.6.9
caldbver	3.2.4
date	2006-12-11T16:34:01
revision	2

sched_exp_time	5000.000000
ontime	4764.2656161338
ontime0	4764.2656460553
ontime1	4764.2656460553
ontime2	4764.2656161338
ontime3	4764.2656161338
ontime6	4764.2656161338
ontime8	4764.2656460553
l1events	188280

### 2.1.4 Events

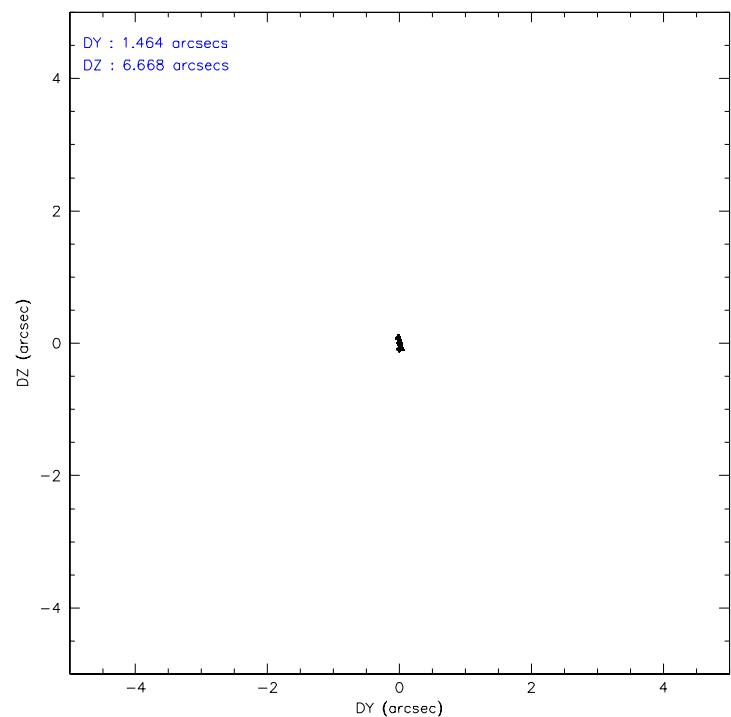
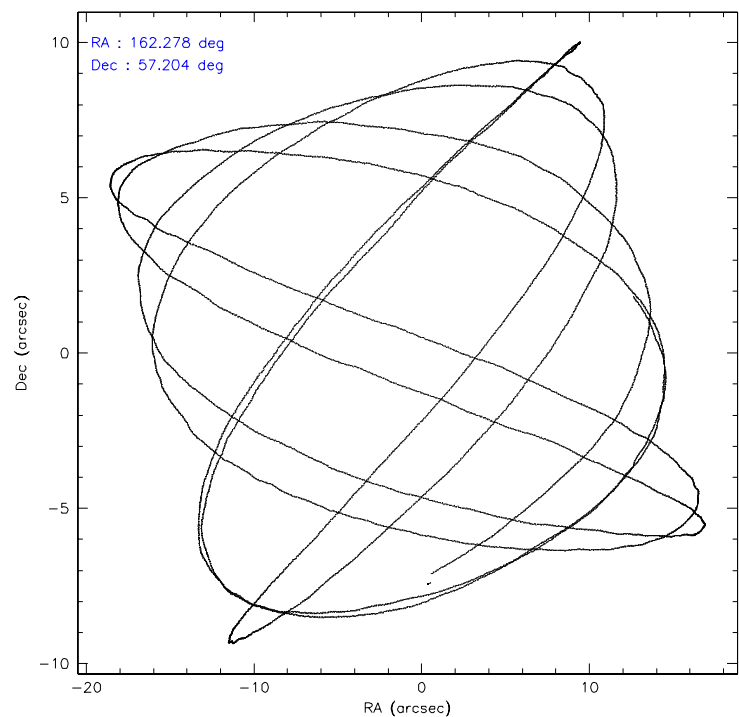
	ccd 0	ccd 1	ccd 2	ccd 3	ccd 6	ccd 8
level 1 events	28370	28222	30527	30567	30596	39998
rejected events	24875	24585	26804	27210	27277	32785
rejected %	87%	87%	87%	89%	89%	81%

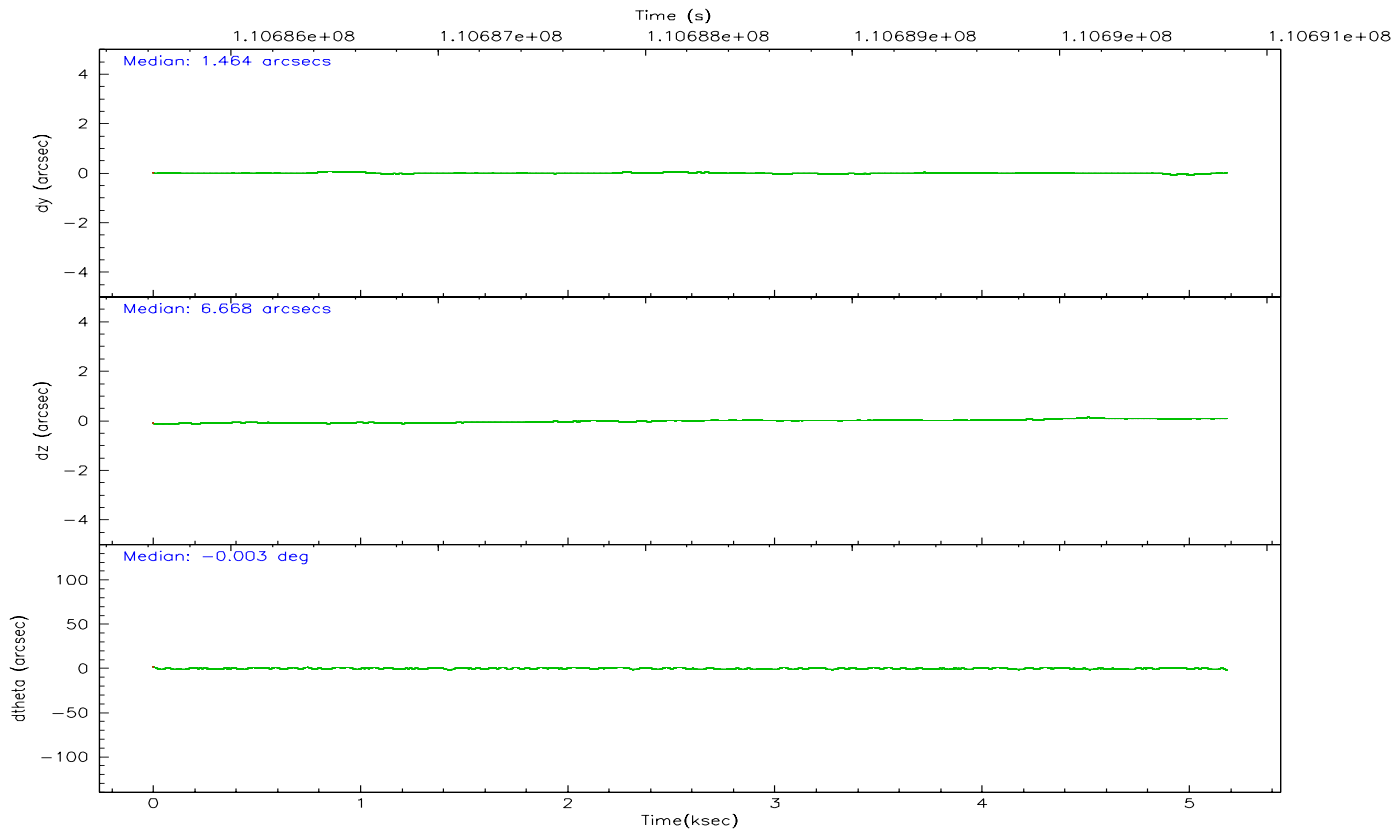
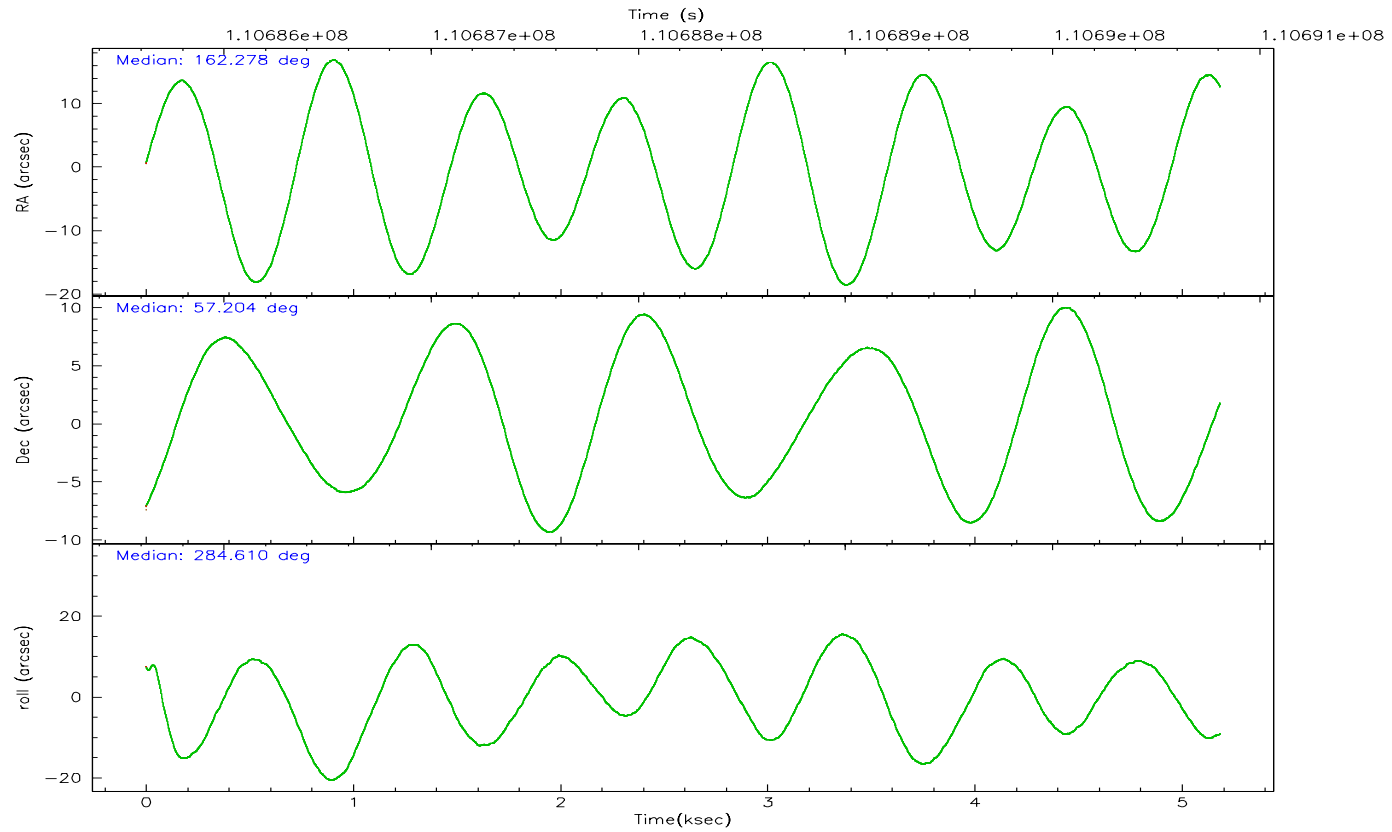
	ccd 0	ccd 1	ccd 2	ccd 3	ccd 6	ccd 8
grade 0 events	1490	1470	1679	1427	1266	2309
	5%	5%	5%	4%	4%	5%
grade 1 events	14	11	15	21	6	27
	0%	0%	0%	0%	0%	0%
grade 2 events	725	702	782	705	700	1500
	2%	2%	2%	2%	2%	3%
grade 3 events	331	370	344	308	352	800
	1%	1%	1%	1%	1%	2%
grade 4 events	308	381	329	323	333	743
	1%	1%	1%	1%	1%	1%
grade 5 events	1090	1161	1038	1123	1280	1714
	3%	4%	3%	3%	4%	4%
grade 6 events	644	718	598	599	672	1862
	2%	2%	1%	1%	2%	4%
grade 7 events	23768	23409	25742	26061	25987	31043
	83%	82%	84%	85%	84%	77%

## 2.2 Compared Parameters

Parameter	Planned	Actual	Parameter	Planned	Actual
Instrument	ACIS	ACIS	Obspar format version number	6	6
Detector	ACIS-012368	ACIS-012368	Obspar file type	PREDICTED	ACTUAL
Grating	NONE	NONE	Obspar update status	NONE	UPDATED
Data mode	FAINT	FAINT	Number of optional ACIS chips dropped	0	0
Observation mode	POINTING	POINTING	On-chip summing requested	N	N
Pointing RA	162.242242	162.2780289201157	Subarray requested	NONE	NONE
Pointing Dec	57.223709	57.20417899283537	Alternating exposures requested	N	N
Pointing Roll	284.441515	284.6200941105703	Primary exposure time	0.000000	3.2
SIM focus pos (mm)	-0.782348	-0.7809083437167272			
SIM defocus (mm)	0	0.001439871863259334			
SIM translation stage pos (mm)	-233.592463	-233.5874344608287			
SIM translation stage offset (mm)	0	-0.005018542100998502			
Observation start time	110685806.184000	110685430.44545			
Observation start date	2001-07-05T02:02:22	2001-07-05T01:57:10			
Observation end time	110690806.184000	110690943.40816			
Observation end date	2001-07-05T03:25:42	2001-07-05T03:29:03			
Read mode	TIMED	TIMED			

2.3 Aspect



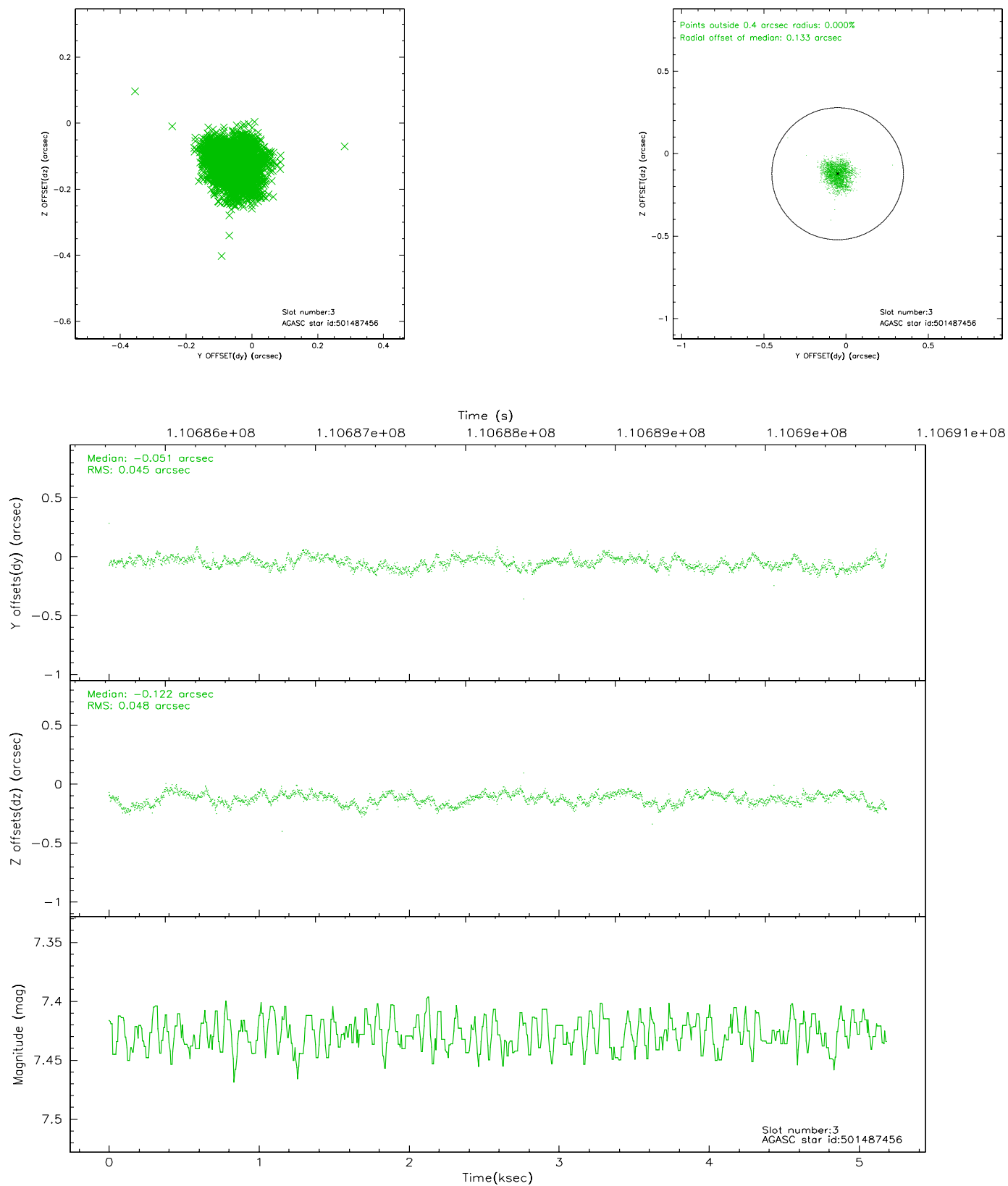


### Slot Statistics

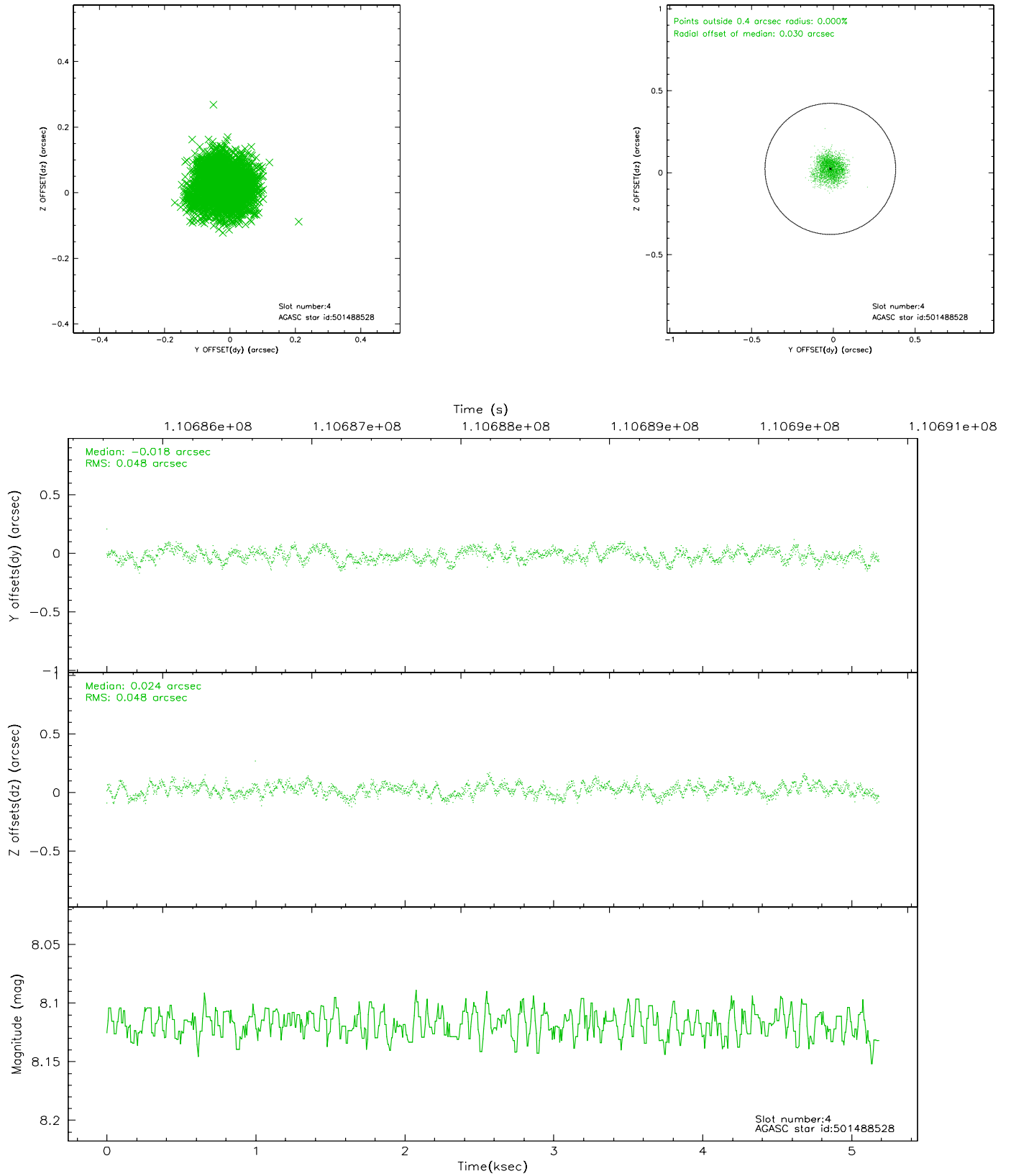
slot	status	id	mag	n_pts	med_dy	med_dz	dr1	dr2	ra	dec	mean_y	mean_z
0	FID	ACIS-I-2	7.15	1265	-0.023	-0.049	0.008	0.014	0.000000	0.000000	-755.82	-836.46
1	FID	ACIS-I-4	7.18	1264	-0.083	0.036	0.006	0.009	0.000000	0.000000	2157.64	1069.24
2	FID	ACIS-I-5	7.23	1264	0.005	0.082	0.009	0.014	0.000000	0.000000	-1808.13	1068.43
3	GUIDE	501487456	7.43	2528	-0.051	-0.122	0.071	0.109	161.499463	56.920840	684.22	-1683.16
4	GUIDE	501488528	8.12	2529	-0.018	0.024	0.075	0.114	162.150935	57.312270	-353.03	-93.04
5	GUIDE	501487176	9.93	2528	-0.005	-0.024	0.179	0.267	161.359950	56.912355	642.15	-1955.76
6	GUIDE	501877264	9.32	2528	-0.170	-0.014	0.104	0.166	163.254394	57.702218	-1197.32	2317.72
7	GUIDE	501486512	9.61	2529	0.249	0.152	0.140	0.217	163.579075	56.729186	2356.66	2120.67

## 2.4 Star Slots

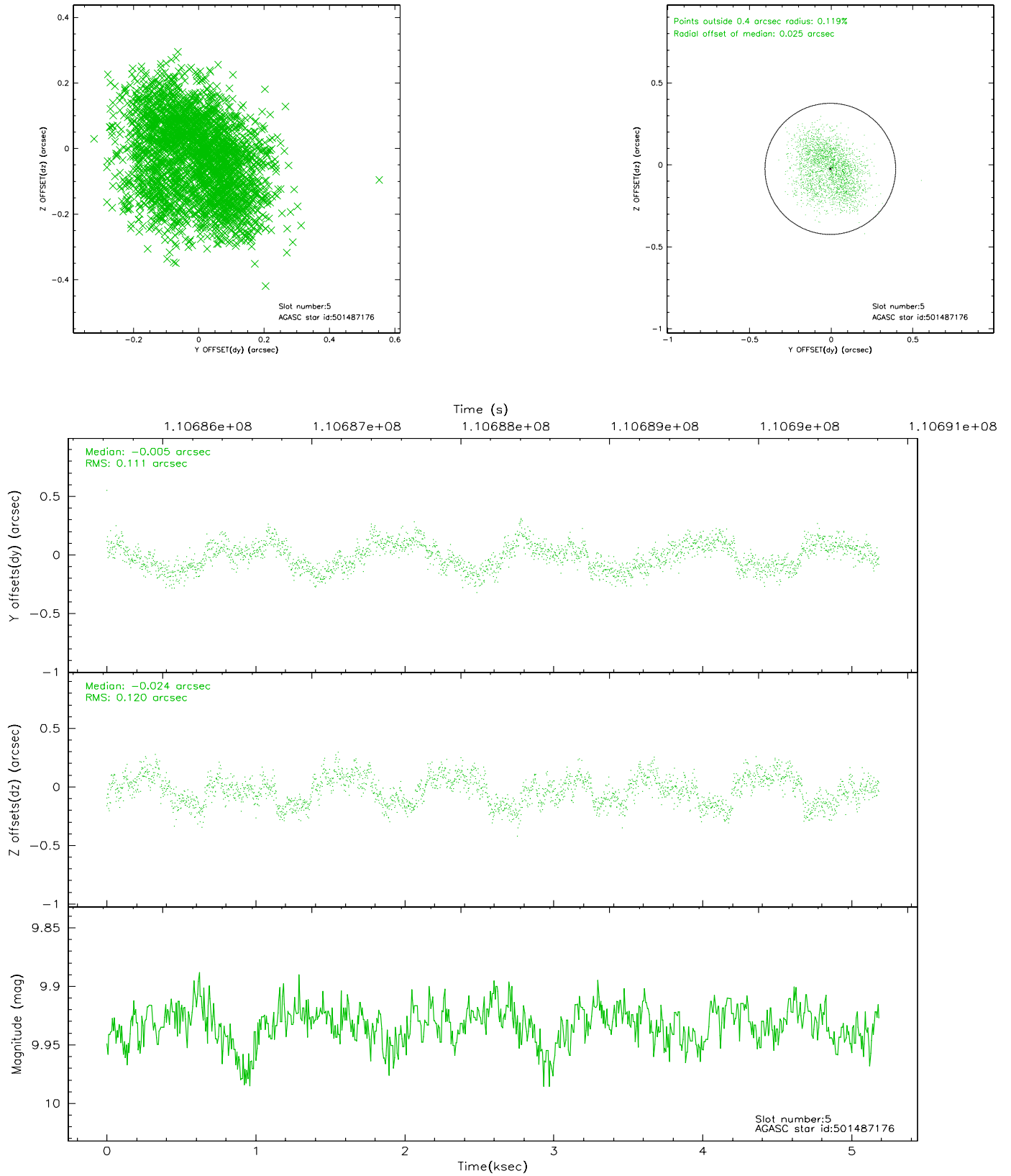
### 2.4.1 Slot 3



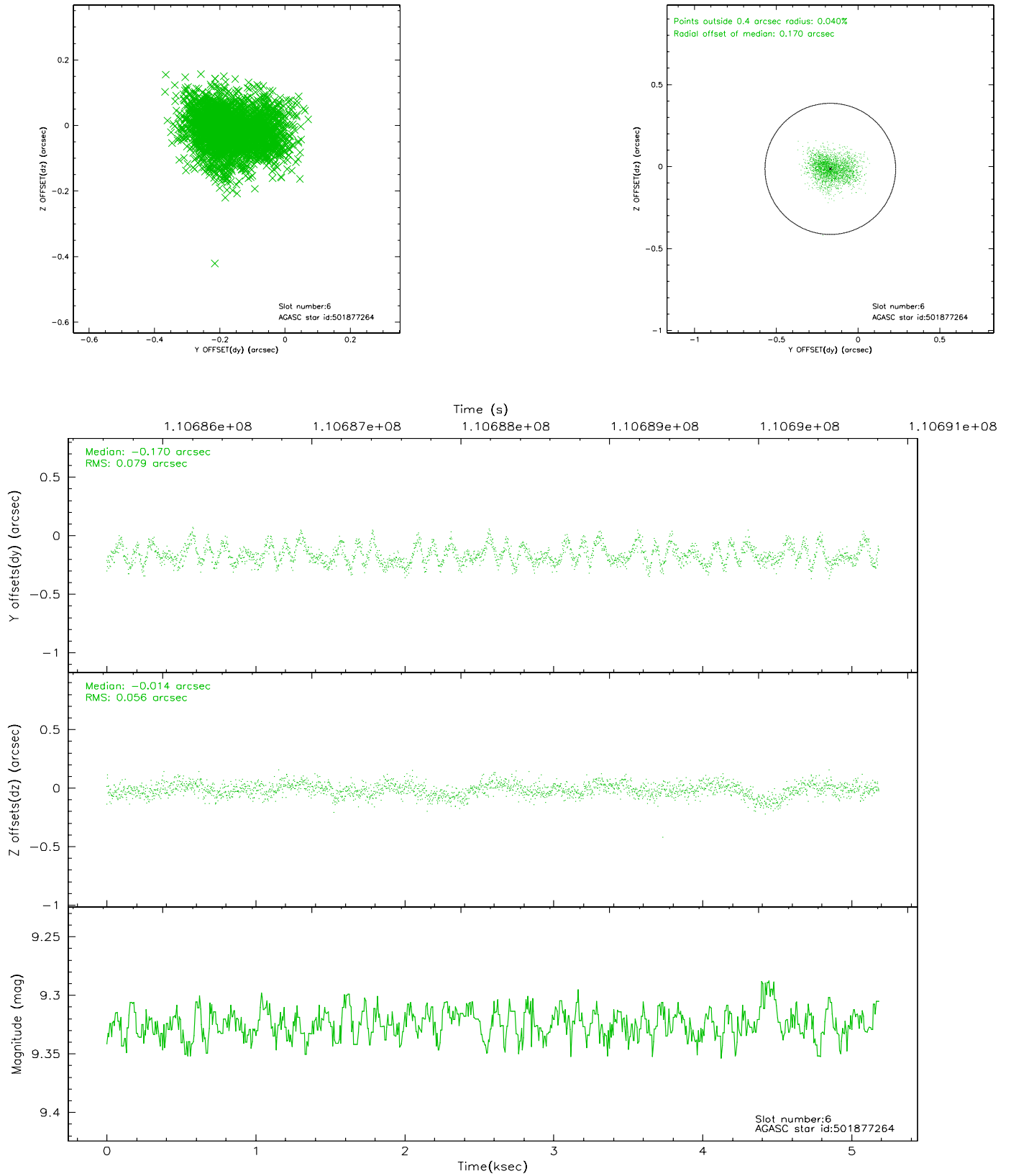
## 2.4.2 Slot 4



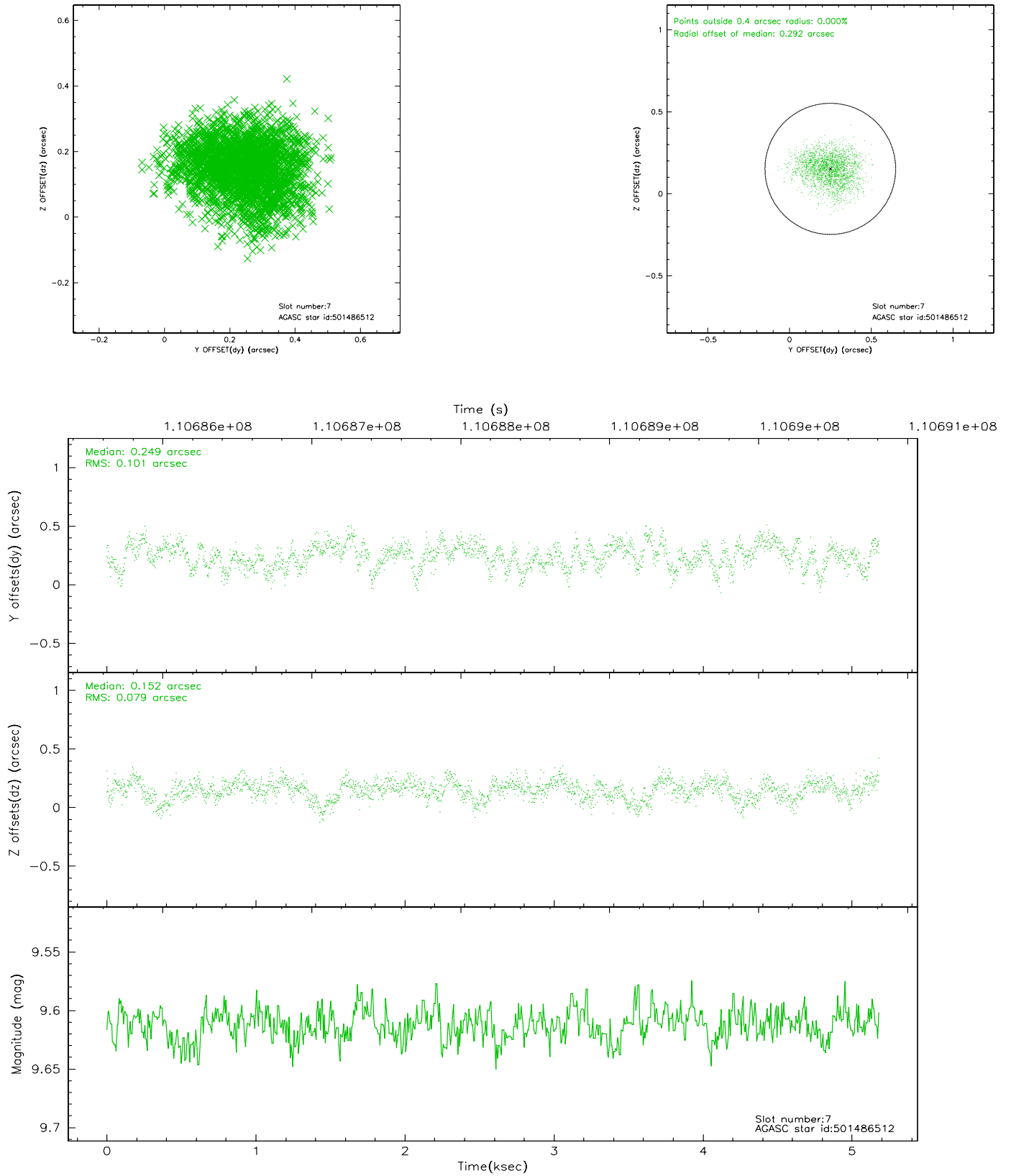
### 2.4.3 Slot 5



## 2.4.4 Slot 6

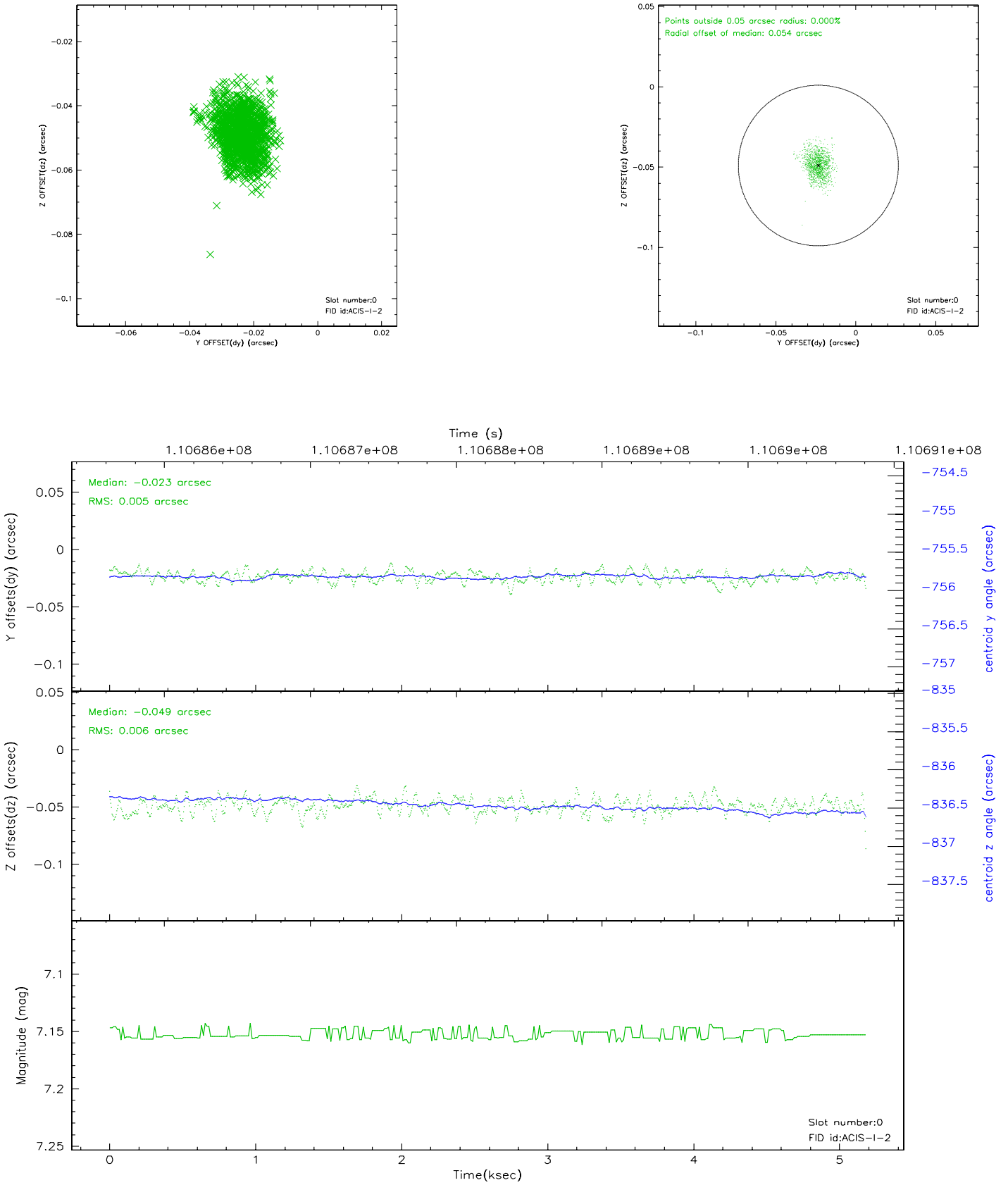


## 2.4.5 Slot 7

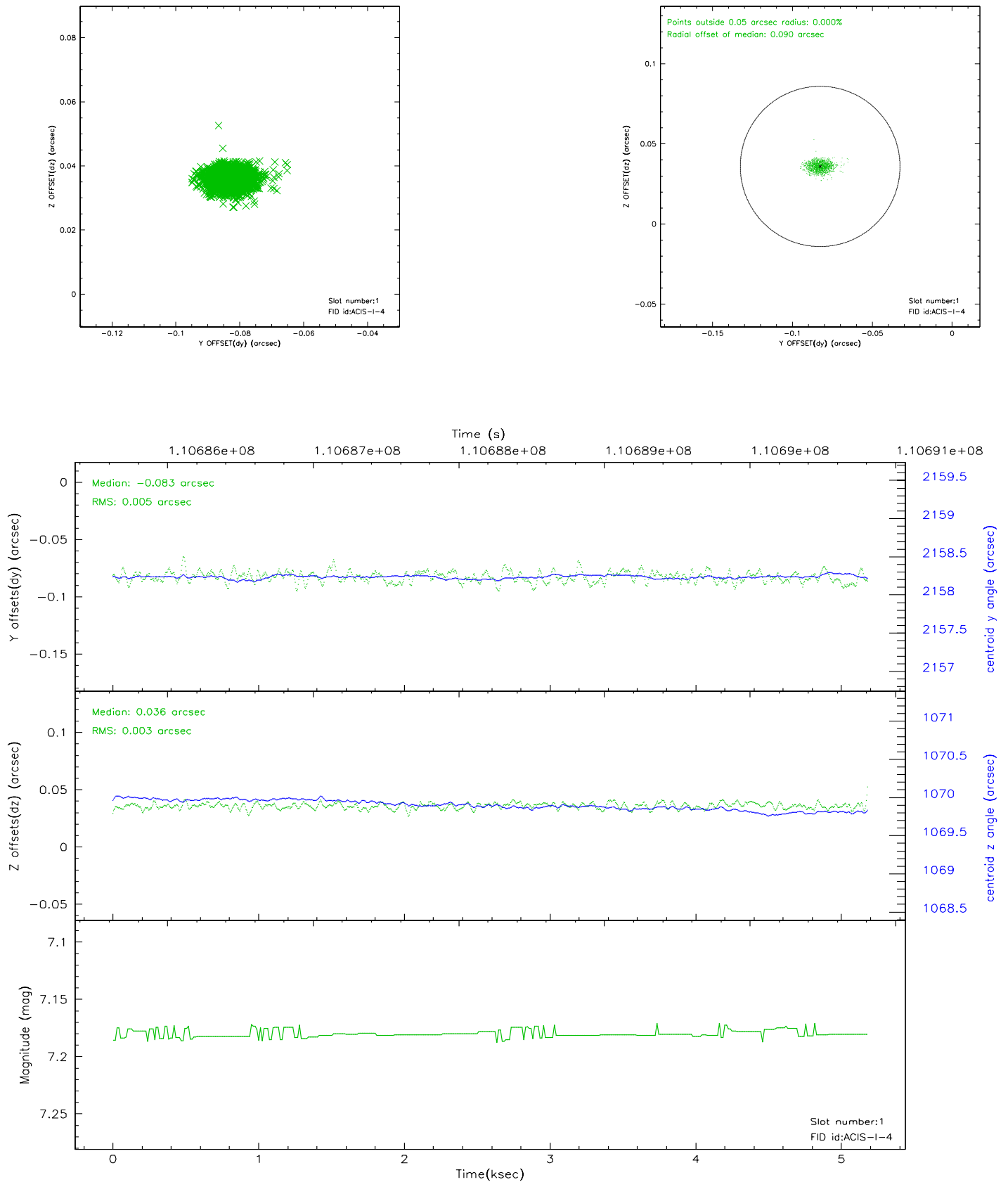


## 2.5 FID Slots

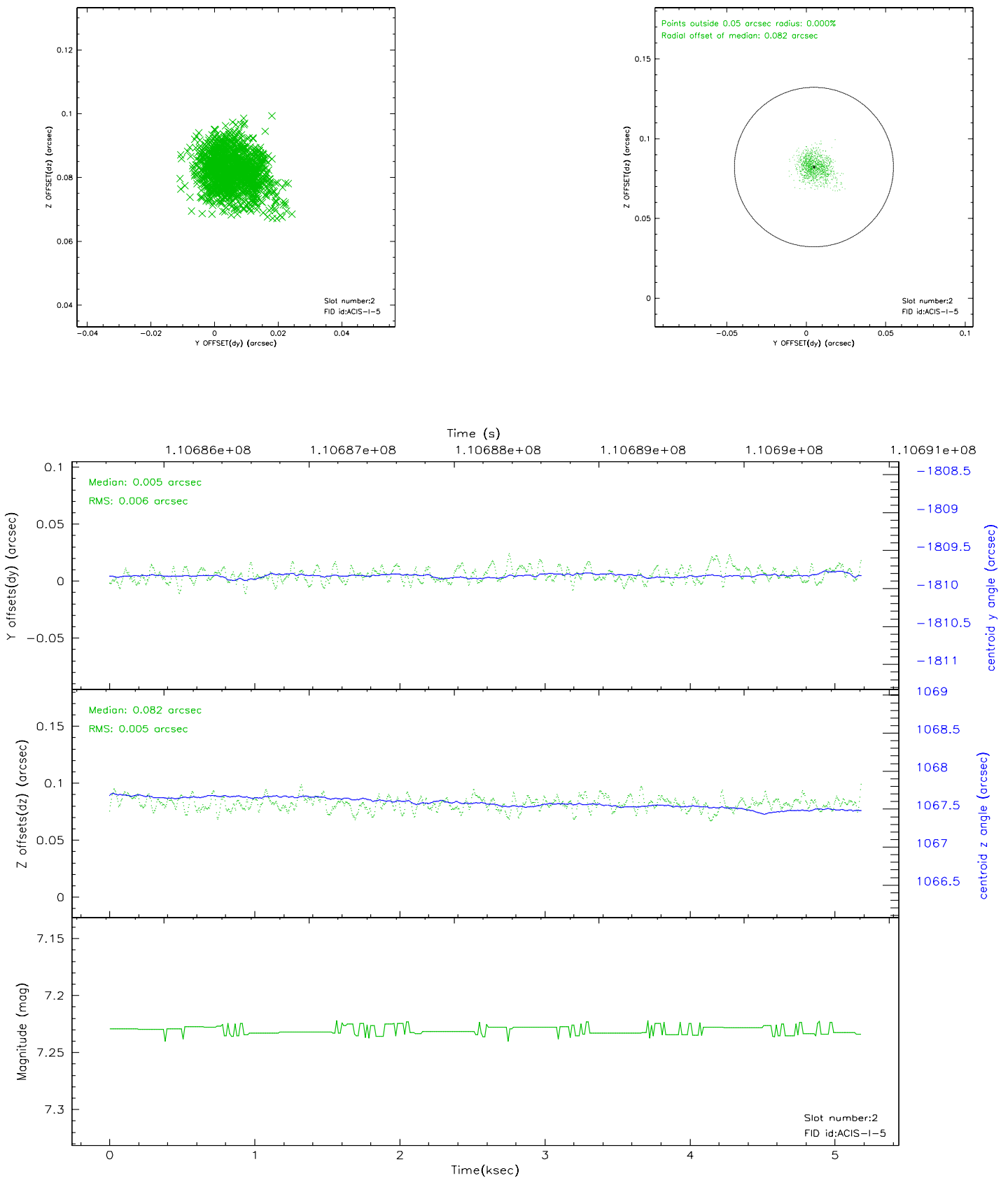
### 2.5.1 Slot 0



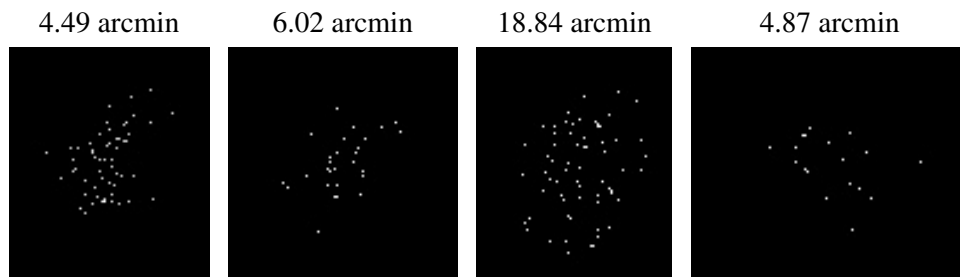
## 2.5.2 Slot 1



### 2.5.3 Slot 2



### 3 Point Sources



## A Summary

### A.1 Status

V&V Scientist	Beth Sundheim
V&V Date (YYYY-MM-DD)	2006.12.11
V&V Edition	1
V&V Disposition and Status	OK
V&V Charge Time	4.761

### A.2 Comments