

V&V Reference Report

L2 ASCDS Version : 8.4.5

Observation 1674 - L2 Version 3
Chandra X-Ray Center

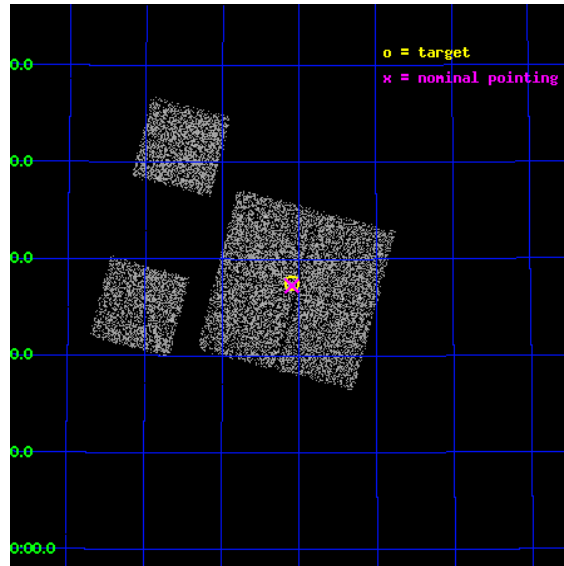
L2 Processing Date : Sep 20 2012

Contents

1	Front	2
2	OBI	3
2.1	OBI	3
2.1.1	Images	3
2.1.2	Bias	3
2.1.3	Parameters	4
2.1.4	Events	4
2.2	Compared Parameters	5
2.3	Aspect	6
2.4	Star Slots	9
2.4.1	Slot 3	9
2.4.2	Slot 4	10
2.4.3	Slot 5	11
2.4.4	Slot 6	12
2.4.5	Slot 7	13
2.5	FID Slots	14
2.5.1	Slot 0	14
2.5.2	Slot 1	15
2.5.3	Slot 2	16
A	Summary	17
A.1	Status	17
A.2	Comments	17

1 Front

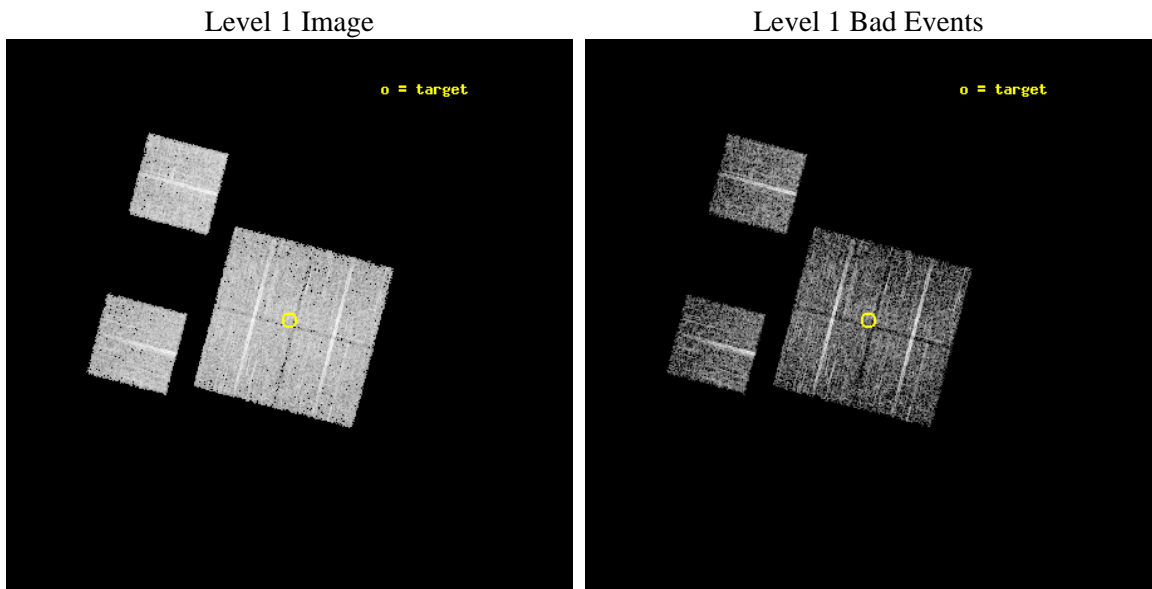
seq_num	900033	Sequence number
obs_id	1674	Observation id
title	LOCKMAN HOLE SHALLOW SURVEY	Proposal title
observer	Dr. Stephen Murray	Principal investigator
object	LOCKMAN HOLE #9	Source name
dtcycle	0	
cycle	P	events from which exps? Prim/Second/Both
ra_targ	162.275	Observer's specified target RA [deg]
dec_targ	57.458889	Observer's specified target Dec [deg]
ra_nom	162.27383221993	Nominal RA [deg]
dec_nom	57.454264377746	Nominal Dec [deg]
roll_nom	284.73283433405	Nominal Roll [deg]
revision	3	Processing version of data
ontime	4752.0000044107	Sum of GTIs [s]
livetime	4691.827319044	Livetime [s]
ontime0	4752.0000044107	Sum of GTIs [s]
ontime1	4752.0000044107	Sum of GTIs [s]
ontime2	4752.0000044107	Sum of GTIs [s]
ontime3	4752.0000044107	Sum of GTIs [s]
ontime6	4752.0000044107	Sum of GTIs [s]
ontime8	4752.0000044107	Sum of GTIs [s]
l2events	17938	Number of level 2 events



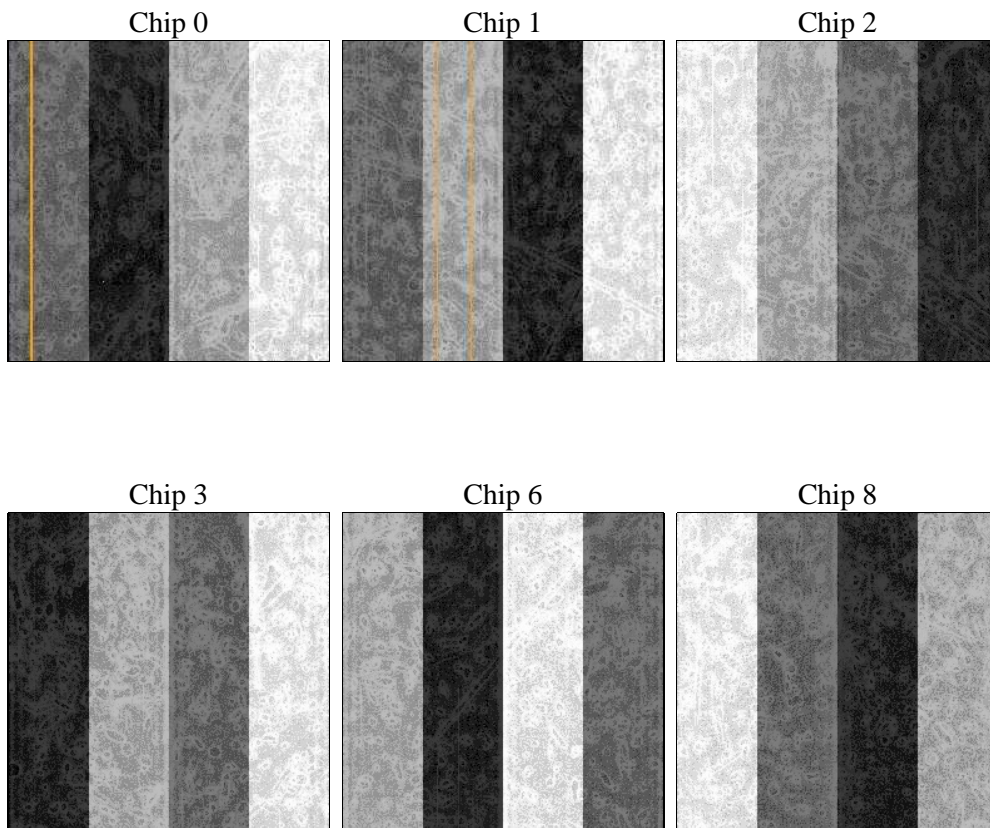
2 OBI

2.1 OBI

2.1.1 Images



2.1.2 Bias



2.1.3 Parameters

obi_num	0	Obi number	sched_exp_time	5000.000000	[s] Scheduled observation exposure time
ascdsver	8.4.5	Processing system revision	ontime	4752.0000044107	Sum of GTIs [s]
caldsver	4.5.1.1	 	ontime0	4752.0000044107	Sum of GTIs [s]
date	2012-09-20T12:44:39	Date and time of file creation	ontime1	4752.0000044107	Sum of GTIs [s]
revision	3	Processing version of data	ontime2	4752.0000044107	Sum of GTIs [s]
			ontime3	4752.0000044107	Sum of GTIs [s]
			ontime6	4752.0000044107	Sum of GTIs [s]
			ontime8	4752.0000044107	Sum of GTIs [s]
			l1events	187206	Number of level 1 events

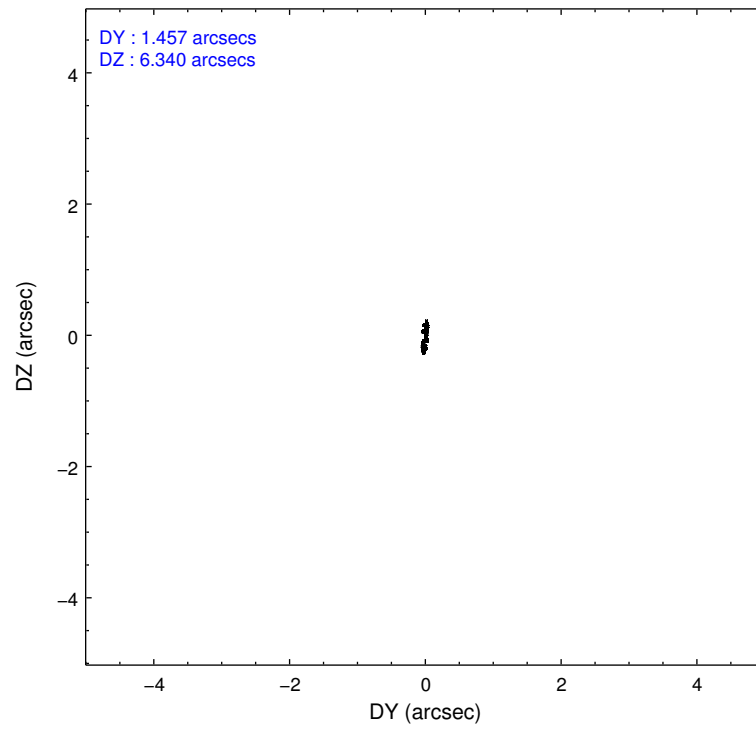
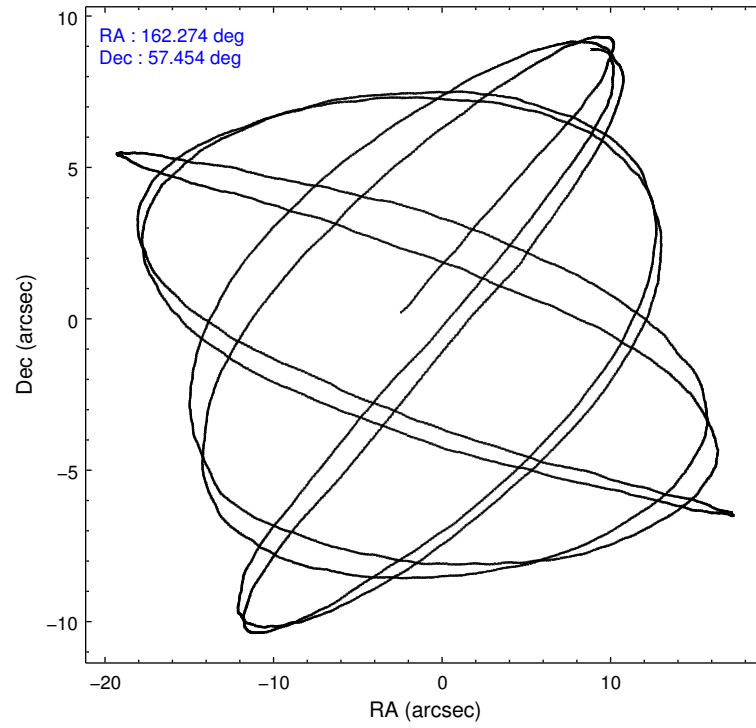
2.1.4 Events

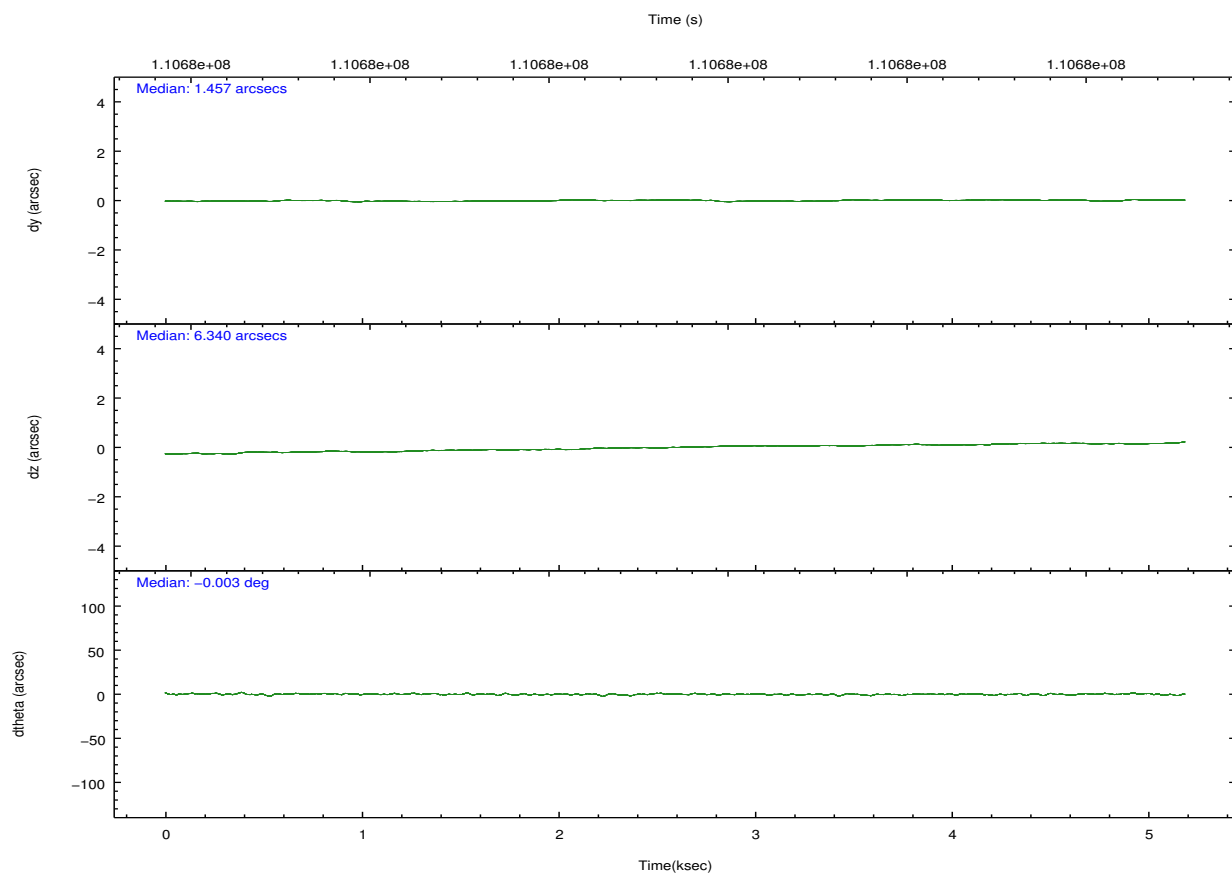
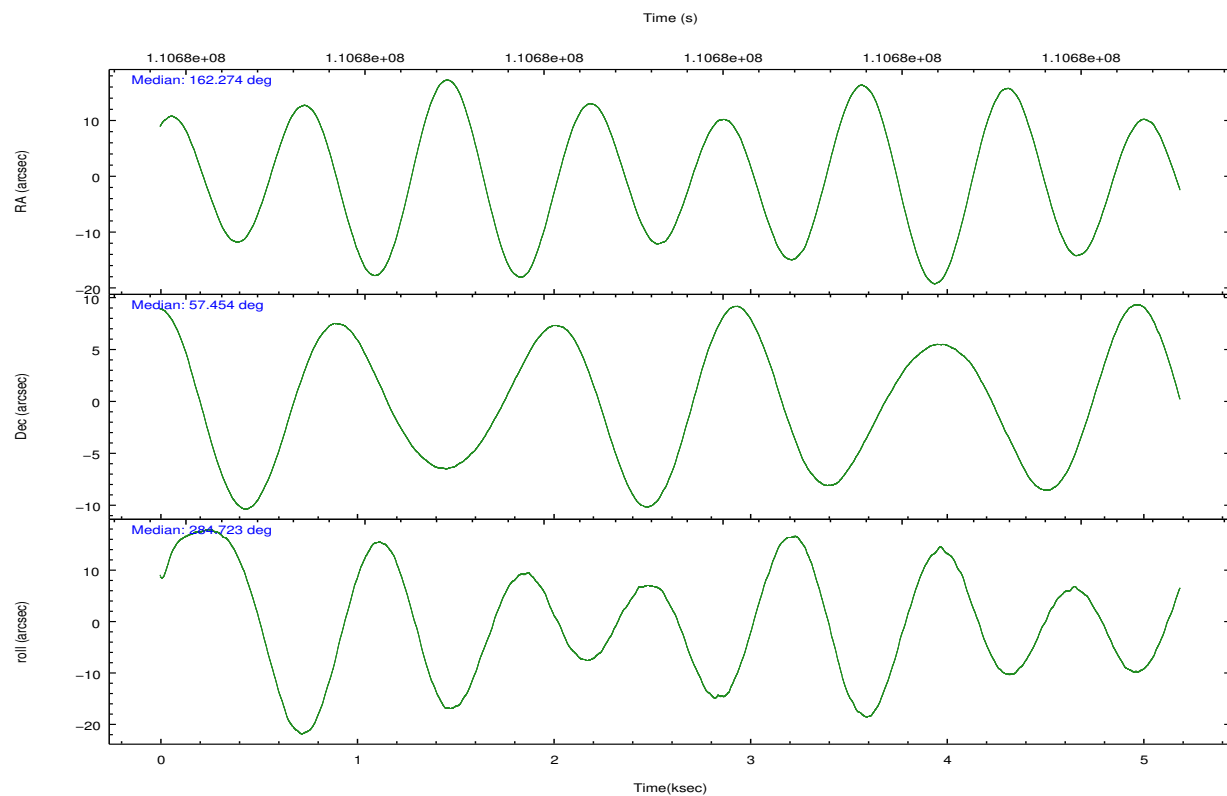
	ccd 0	ccd 1	ccd 2	ccd 3	ccd 6	ccd 8		ccd 0	ccd 1	ccd 2	ccd 3	ccd 6	ccd 8
level 1 events	27887	29102	31227	29815	29469	39706	grade 0 events	1410	1458	1506	1442	1297	2300
rejected events	24438	25459	27701	26449	26169	32270		5%	5%	4%	4%	4%	5%
rejected %	87%	87%	88%	88%	88%	81%	grade 1 events	14	18	12	23	12	29
								0%	0%	0%	0%	0%	0%
							grade 2 events	790	752	773	648	628	1660
								2%	2%	2%	2%	2%	4%
							grade 3 events	338	385	301	332	401	783
								1%	1%	0%	1%	1%	1%
							grade 4 events	319	384	331	311	341	667
								1%	1%	1%	1%	1%	1%
							grade 5 events	1052	1158	1005	1196	1259	1677
								3%	3%	3%	4%	4%	4%
							grade 6 events	596	666	620	643	636	2035
								2%	2%	1%	2%	2%	5%
							grade 7 events	23368	24281	26679	25220	24895	30555
								83%	83%	85%	84%	84%	76%

2.2 Compared Parameters

Parameter	Planned	Actual	Parameter	Planned	Actual
Instrument	ACIS	ACIS	Obspar format version number	7	7
Detector	ACIS-012368	ACIS-012368	Obspar file type	PREDICTED	ACTUAL
Grating	NONE	NONE	Obspar update status	NONE	UPDATED
Data mode	FAINT	FAINT	Number of optional ACIS chips dropped	0	0
Observation mode	POINTING	POINTING	On-chip summing requested	N	N
[deg] Pointing RA	162.237779	162.2738322199329	Subarray requested	NONE	NONE
[deg] Pointing Dec	57.473667	57.45426437774623	Alternating exposures requested	N	N
[deg] Pointing Roll	284.554568	284.7328343340544	[s] Primary exposure time	0.000000	3.2
[mm] SIM focus pos	-0.782348	-0.7809083437167272			
[mm] SIM defocus	0	0.001439871863259334			
[mm] SIM translation stage pos	-233.592463	-233.5874344608287			
[mm] SIM translation stage offset	0	-0.005018542100998502			
[s] Observation start time (MET)	110680296.184000	110679921.07023			
Observation start date	2001-07-05T00:30:32	2001-07-05T00:25:21			
[s] Observation end time (MET)	110685296.184000	110685430.44545			
Observation end date	2001-07-05T01:53:52	2001-07-05T01:57:10			
Read mode	TIMED	TIMED			

2.3 Aspect



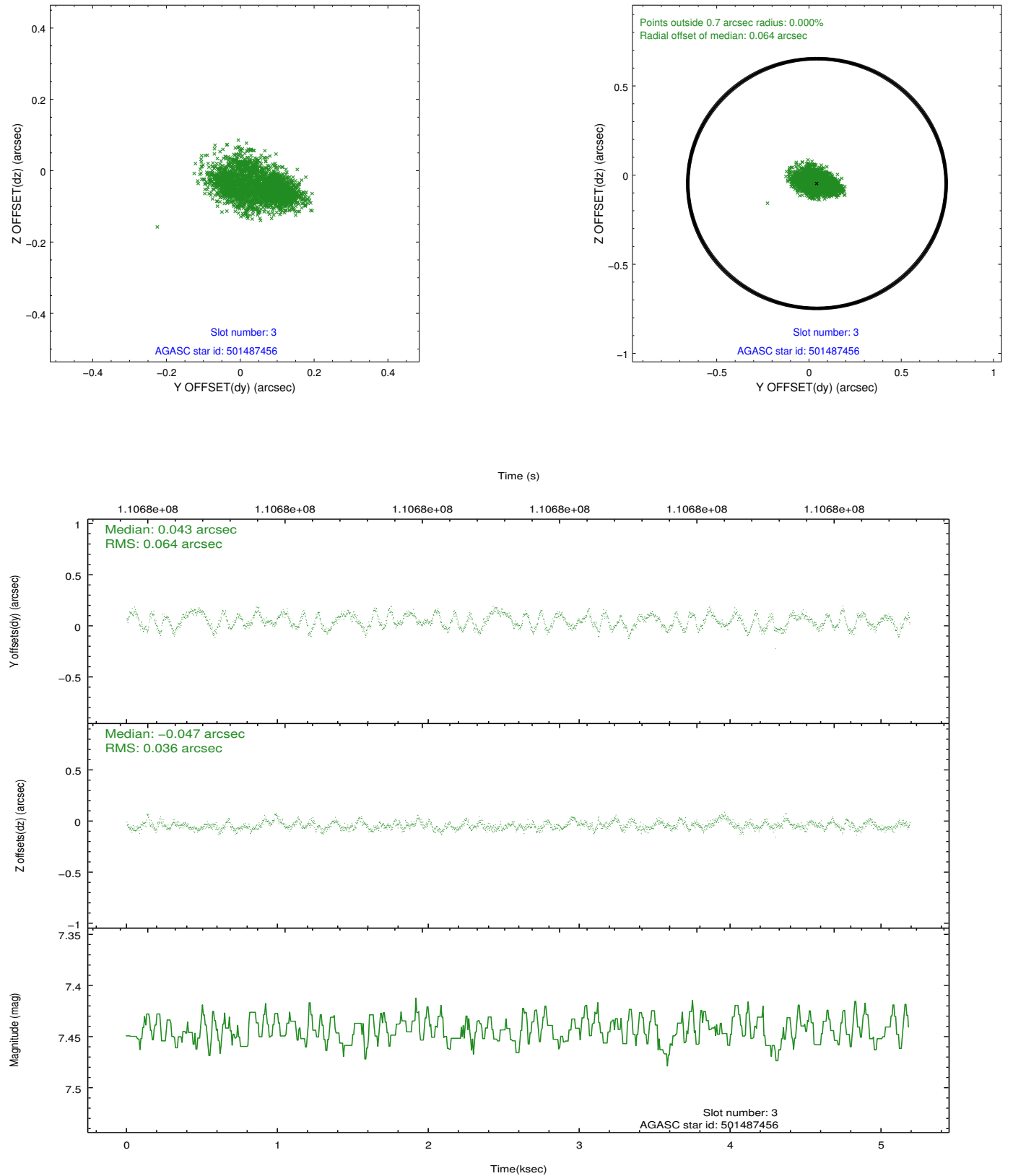


Slot Statistics

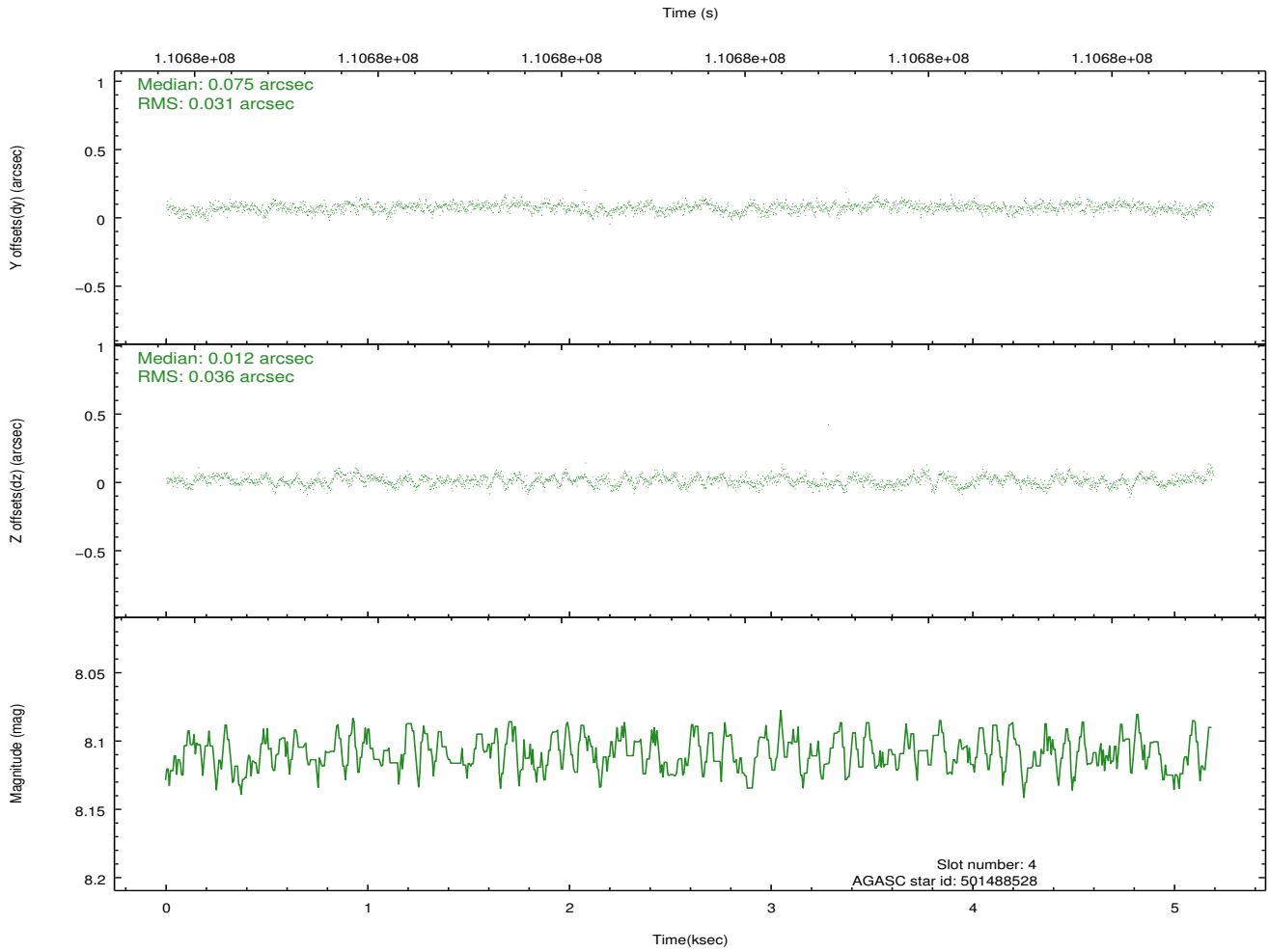
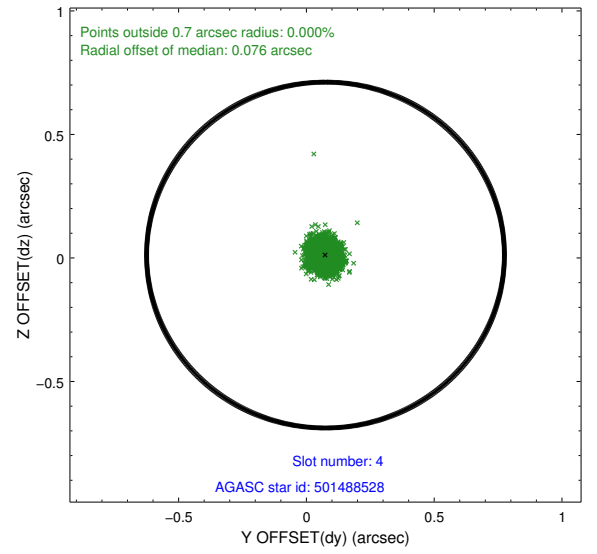
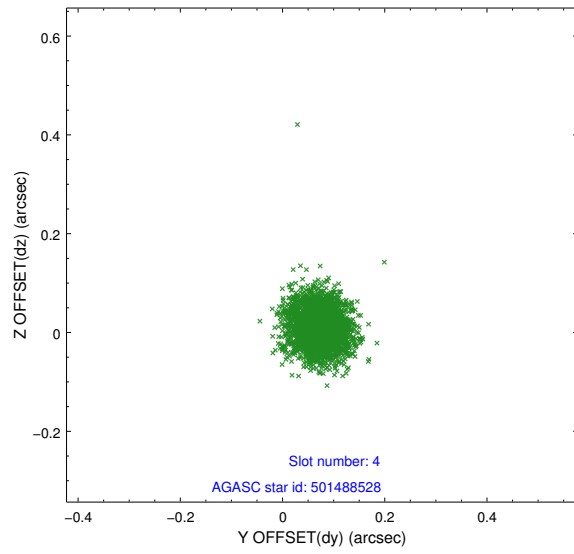
slot	status	id	mag	n_pts	med_dy	med_dz	dr1	dr2	ra	dec	mean_y	mean_z
0	FID	ACIS-I-2	7.15	1265	-0.032	-0.070	0.009	0.015	0.000000	0.000000	-755.82	-836.14
1	FID	ACIS-I-4	7.18	1265	-0.040	0.046	0.006	0.011	0.000000	0.000000	2157.69	1069.59
2	FID	ACIS-I-5	7.23	1266	-0.029	0.094	0.009	0.015	0.000000	0.000000	-1808.15	1068.78
3	GUIDE	501487456	7.44	2531	0.043	-0.047	0.080	0.120	161.499463	56.920840	1554.52	-1901.77
4	GUIDE	501488528	8.11	2532	0.075	0.012	0.050	0.080	162.150935	57.312270	520.65	-309.82
5	GUIDE	501876968	9.39	2532	-0.032	-0.044	0.084	0.135	161.243582	57.954681	-2166.40	-1399.66
6	GUIDE	501877264	9.31	2530	-0.036	0.065	0.098	0.156	163.254394	57.702218	-320.42	2102.92
7	GUIDE	501882000	9.61	2529	-0.052	0.016	0.090	0.145	160.921161	57.857731	-1995.51	-2086.28

2.4 Star Slots

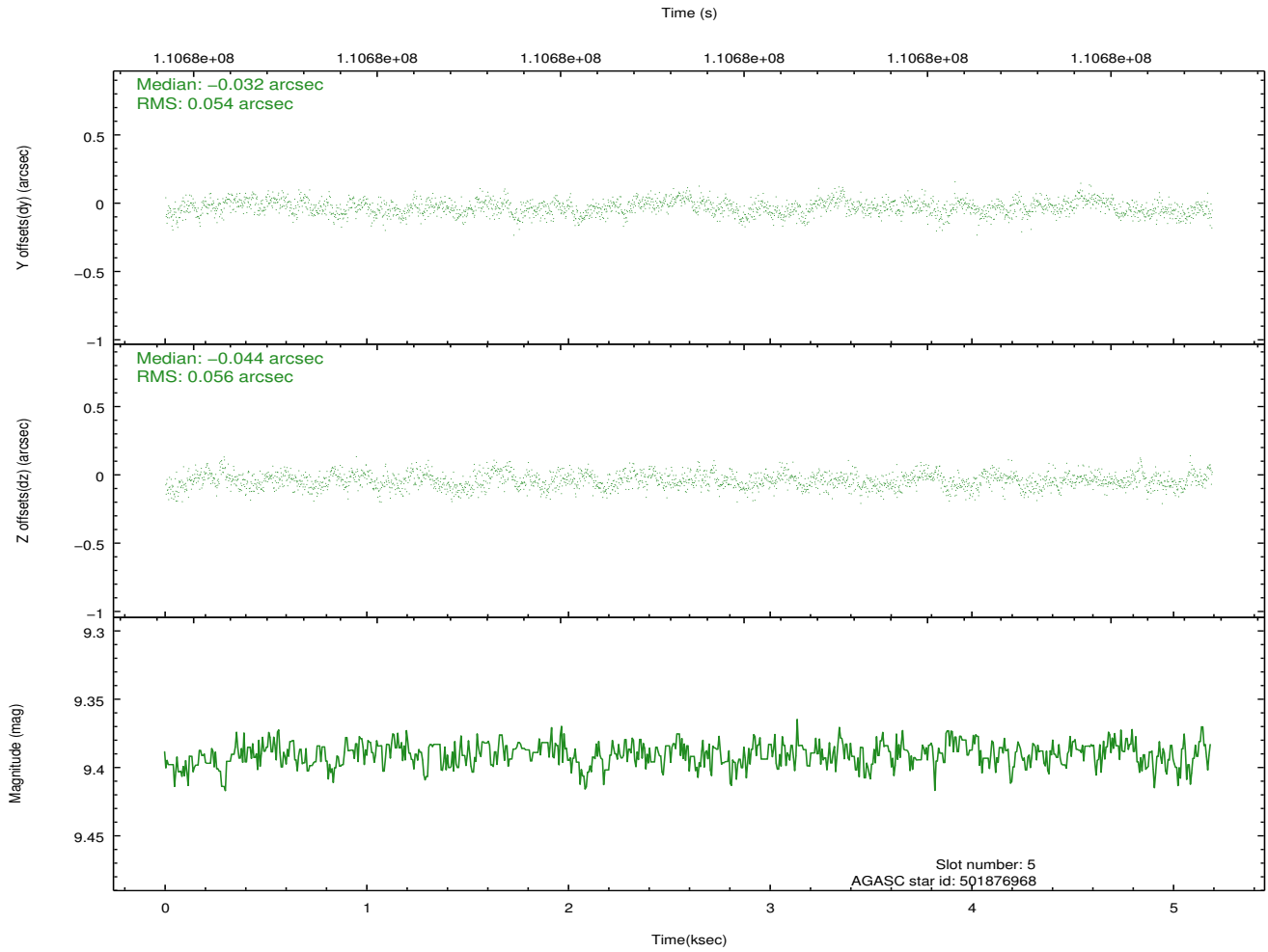
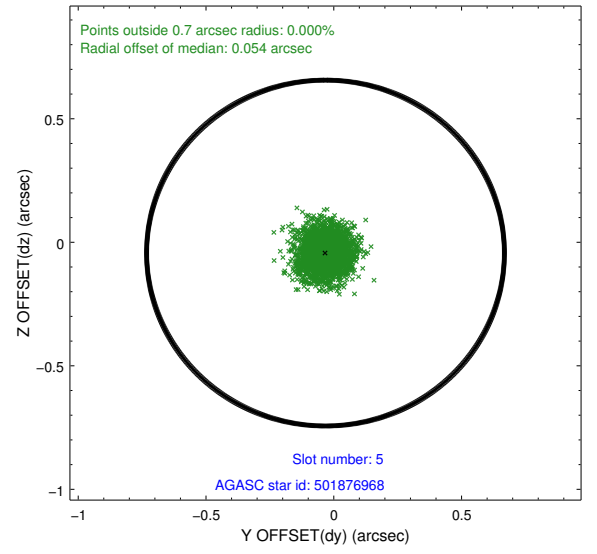
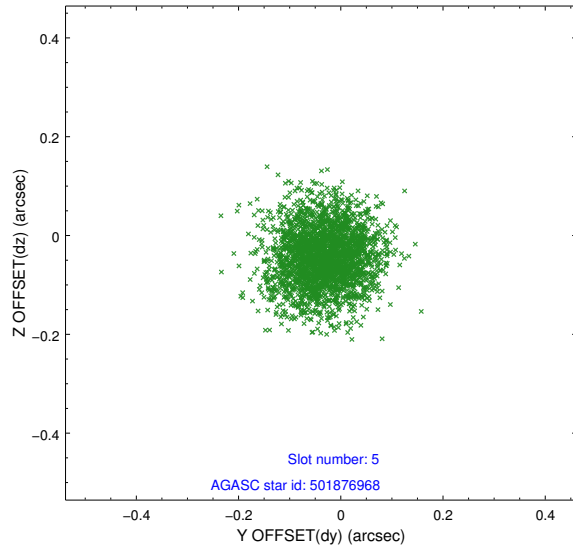
2.4.1 Slot 3



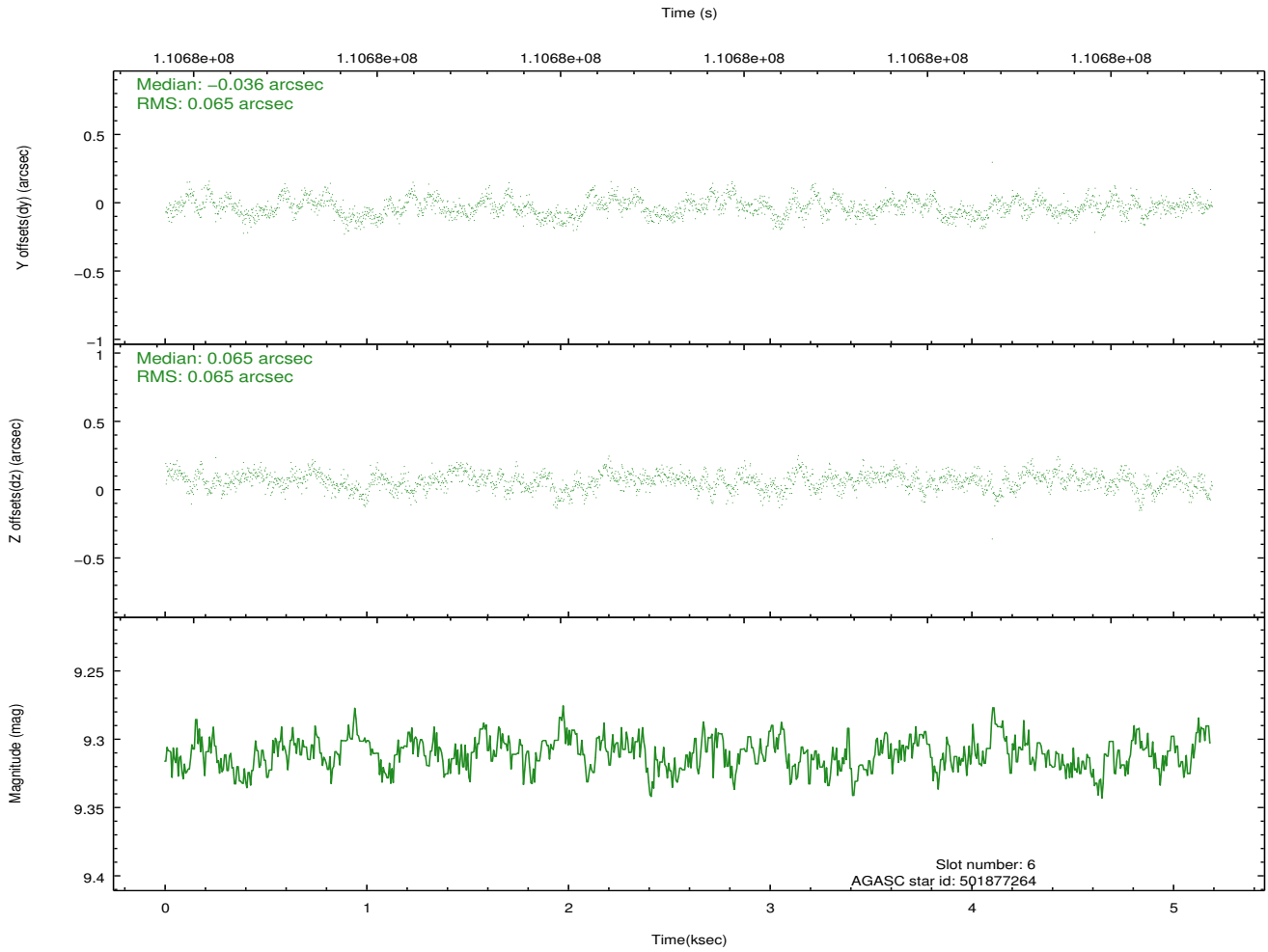
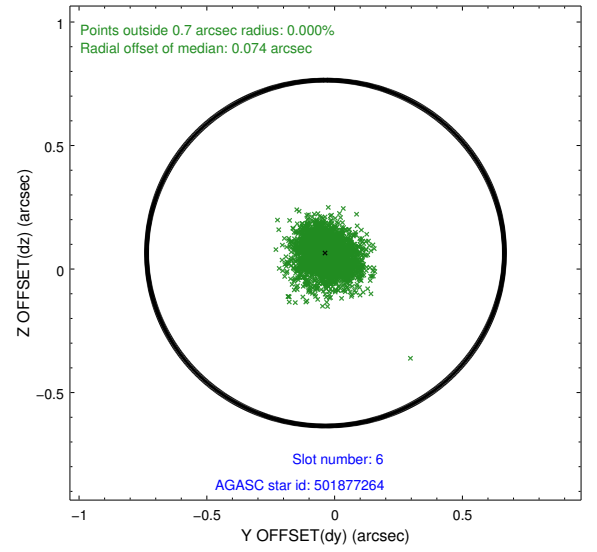
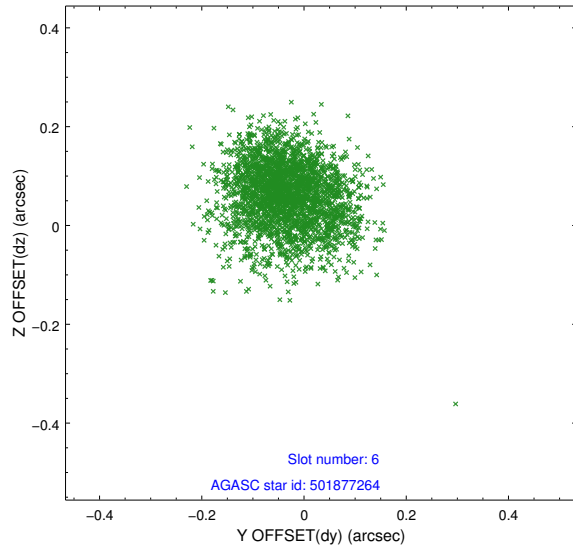
2.4.2 Slot 4



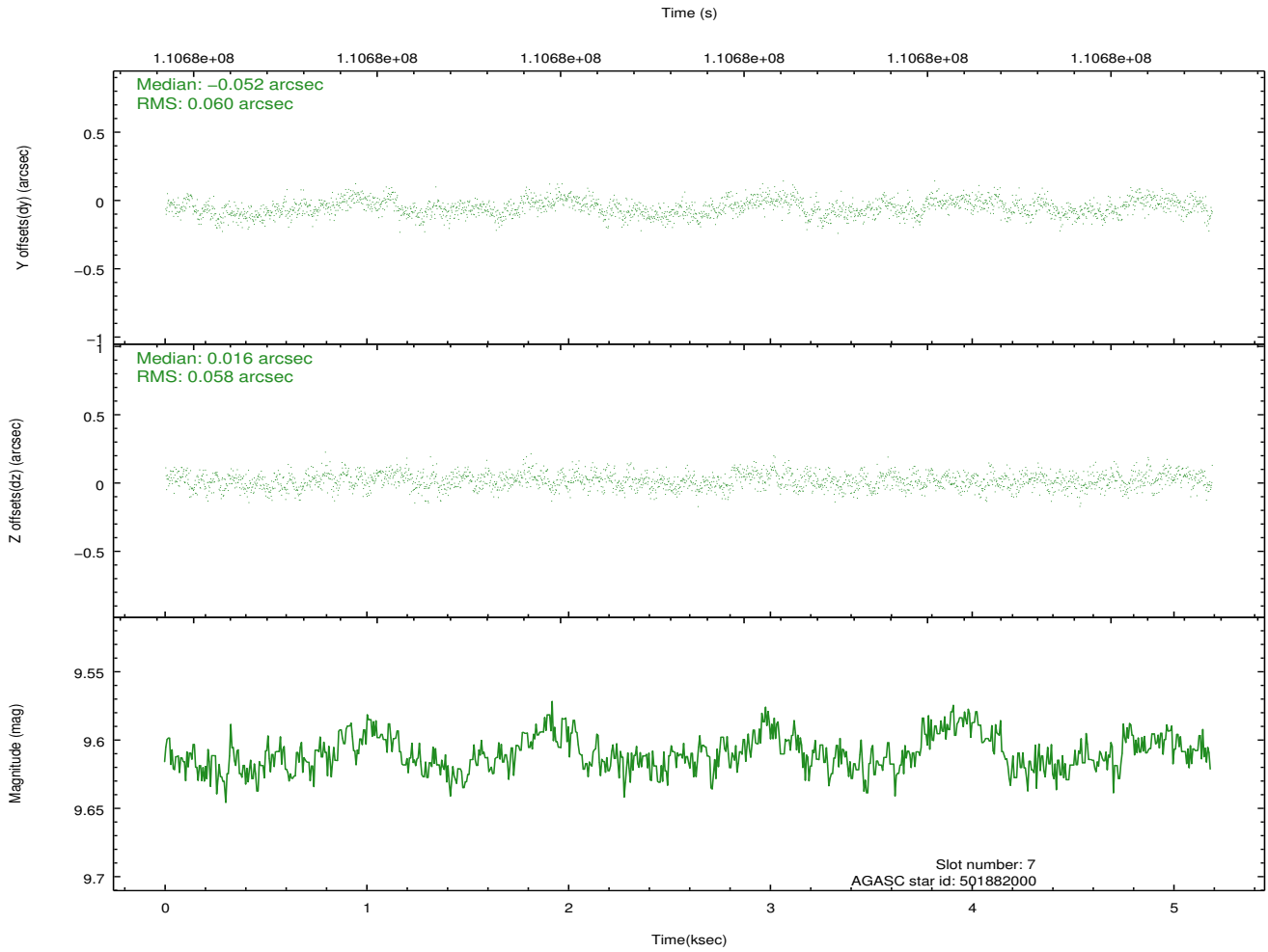
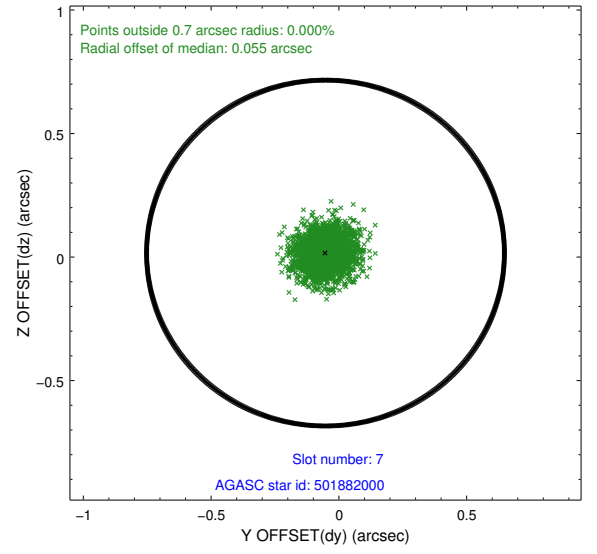
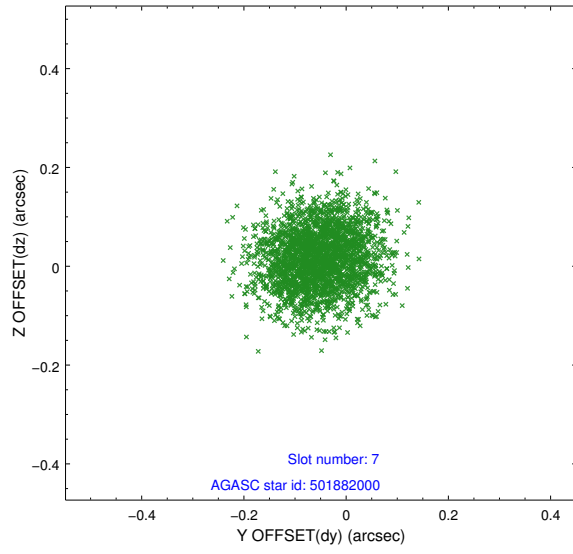
2.4.3 Slot 5



2.4.4 Slot 6

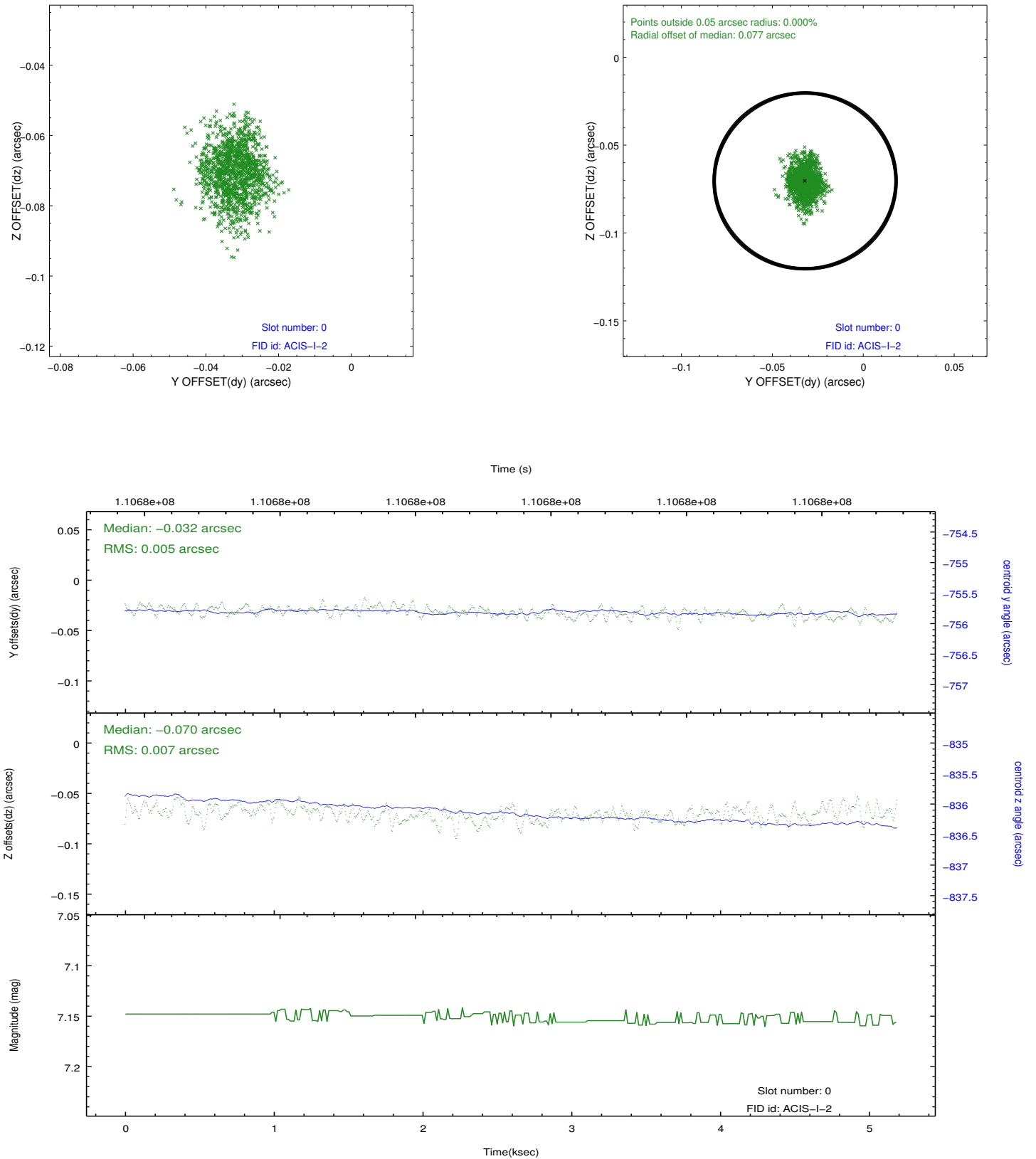


2.4.5 Slot 7

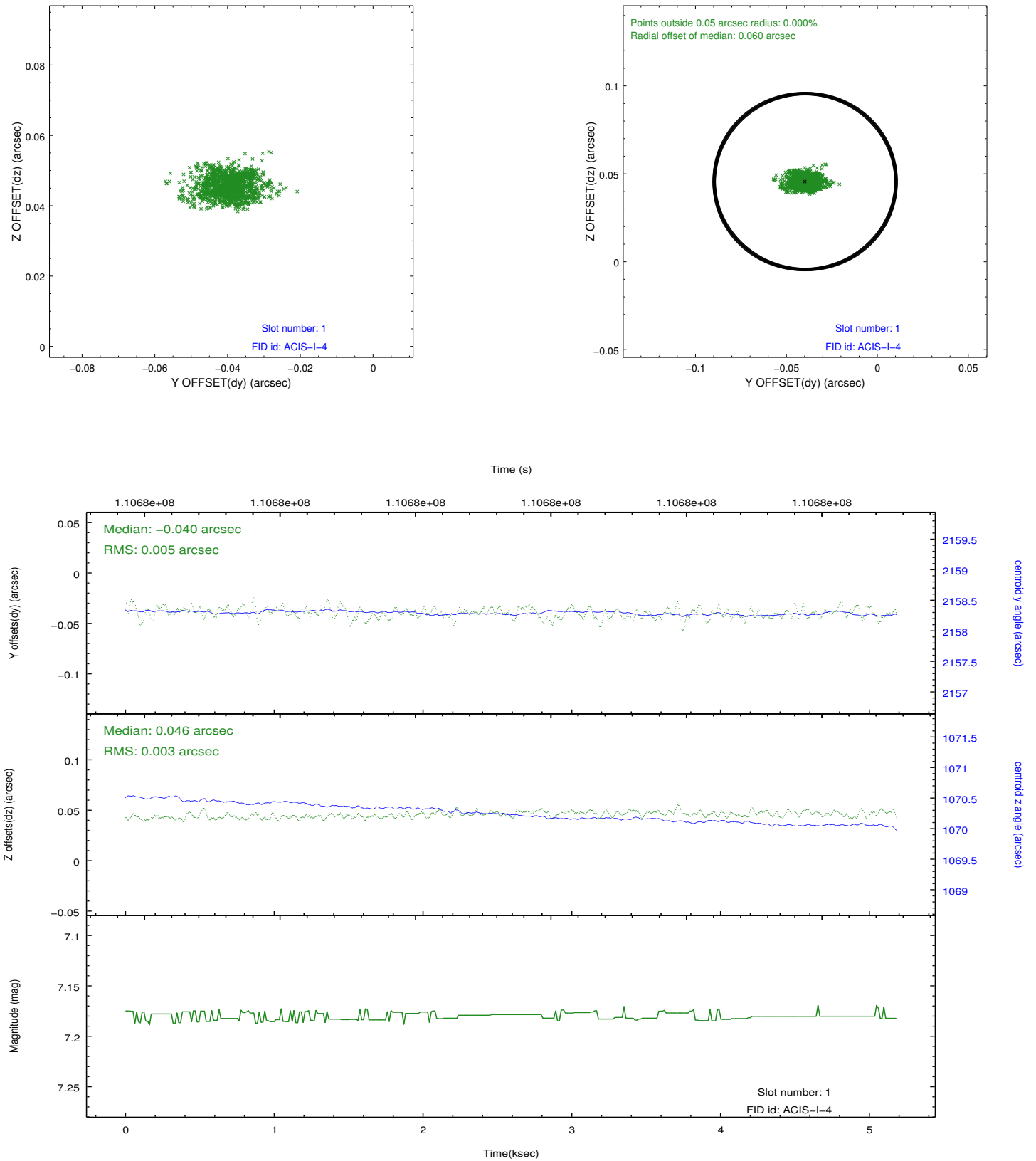


2.5 FID Slots

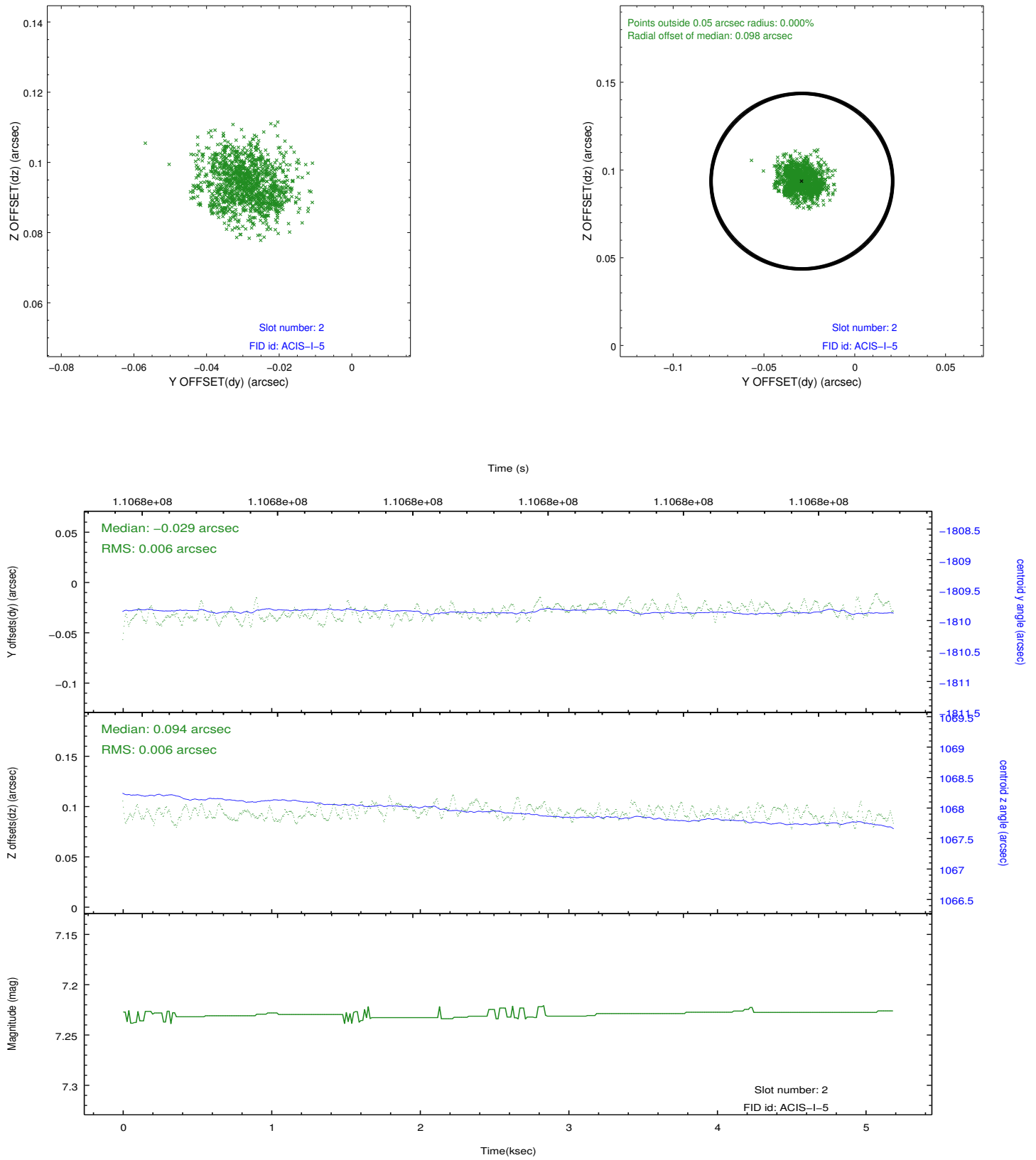
2.5.1 Slot 0



2.5.2 Slot 1



2.5.3 Slot 2



A Summary

A.1 Status

V&V Scientist	Jen Lauer
V&V Date (YYYY-MM-DD)	2012.09.21
V&V Edition	1
V&V Disposition and Status	OK
V&V Charge Time	4.755

A.2 Comments