

V&V Reference Report

L2 ASCDS Version : 7.6.9

Observation 1674 - L2 Version 001
Chandra X-Ray Center

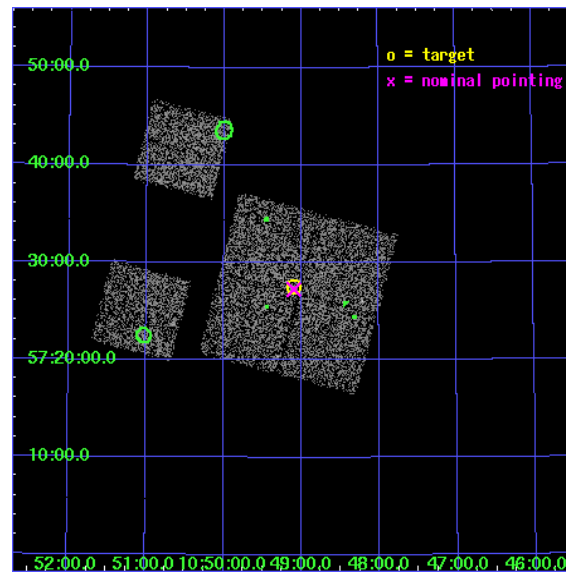
L2 Processing Date : Dec 11 2006

Contents

| | | |
|----------|-------------------------------|-----------|
| 1 | Front | 2 |
| 2 | OBI | 3 |
| 2.1 | OBI | 3 |
| 2.1.1 | Images | 3 |
| 2.1.2 | Bias | 3 |
| 2.1.3 | Parameters | 4 |
| 2.1.4 | Events | 4 |
| 2.2 | Compared Parameters | 5 |
| 2.3 | Aspect | 6 |
| 2.4 | Star Slots | 9 |
| 2.4.1 | Slot 3 | 9 |
| 2.4.2 | Slot 4 | 10 |
| 2.4.3 | Slot 5 | 11 |
| 2.4.4 | Slot 6 | 12 |
| 2.4.5 | Slot 7 | 13 |
| 2.5 | FID Slots | 14 |
| 2.5.1 | Slot 0 | 14 |
| 2.5.2 | Slot 1 | 15 |
| 2.5.3 | Slot 2 | 16 |
| 3 | Point Sources | 17 |
| A | Summary | 18 |
| A.1 | Status | 18 |
| A.2 | Comments | 18 |

1 Front

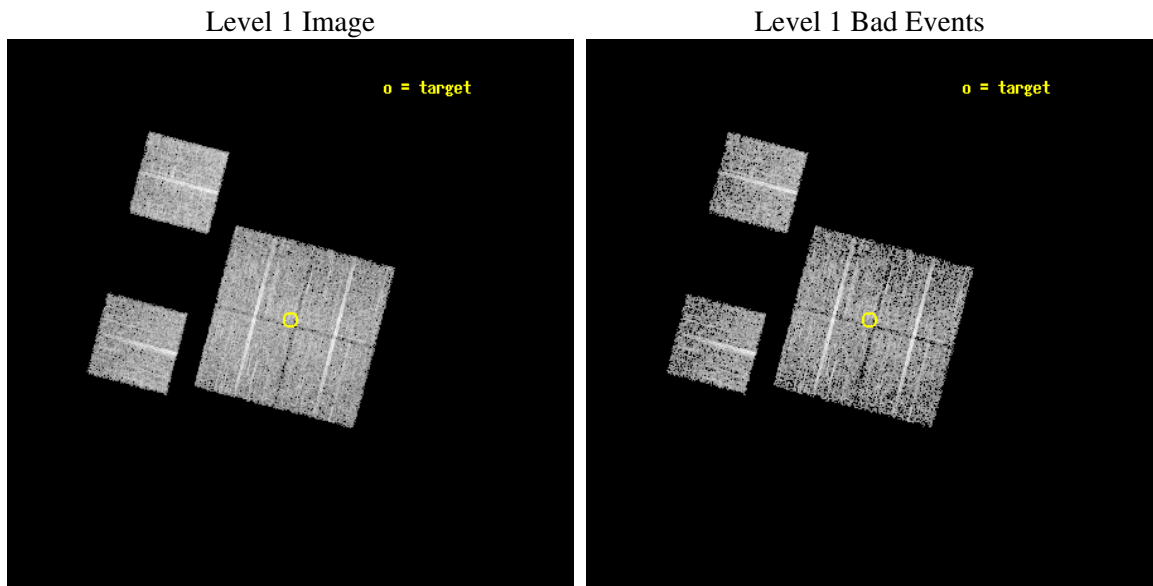
| | |
|----------|-----------------------------|
| seq_num | 900033 |
| obs_id | 1674 |
| title | LOCKMAN HOLE SHALLOW SURVEY |
| observer | Dr. Stephen Murray |
| object | LOCKMAN HOLE #9 |
| dtcycle | 0 |
| cycle | P |
| ra_targ | 162.275 |
| dec_targ | 57.458889 |
| ra_nom | 162.27383217608 |
| dec_nom | 57.454264369372 |
| roll_nom | 284.73283437094 |
| revision | 2 |
| ontime | 4752.0000044256 |
| livetime | 4691.8273190587 |
| ontime0 | 4752.0000044256 |
| ontime1 | 4752.0000044256 |
| ontime2 | 4752.0000044256 |
| ontime3 | 4752.0000044256 |
| ontime6 | 4752.0000044256 |
| ontime8 | 4752.0000044256 |
| l2events | 18010 |



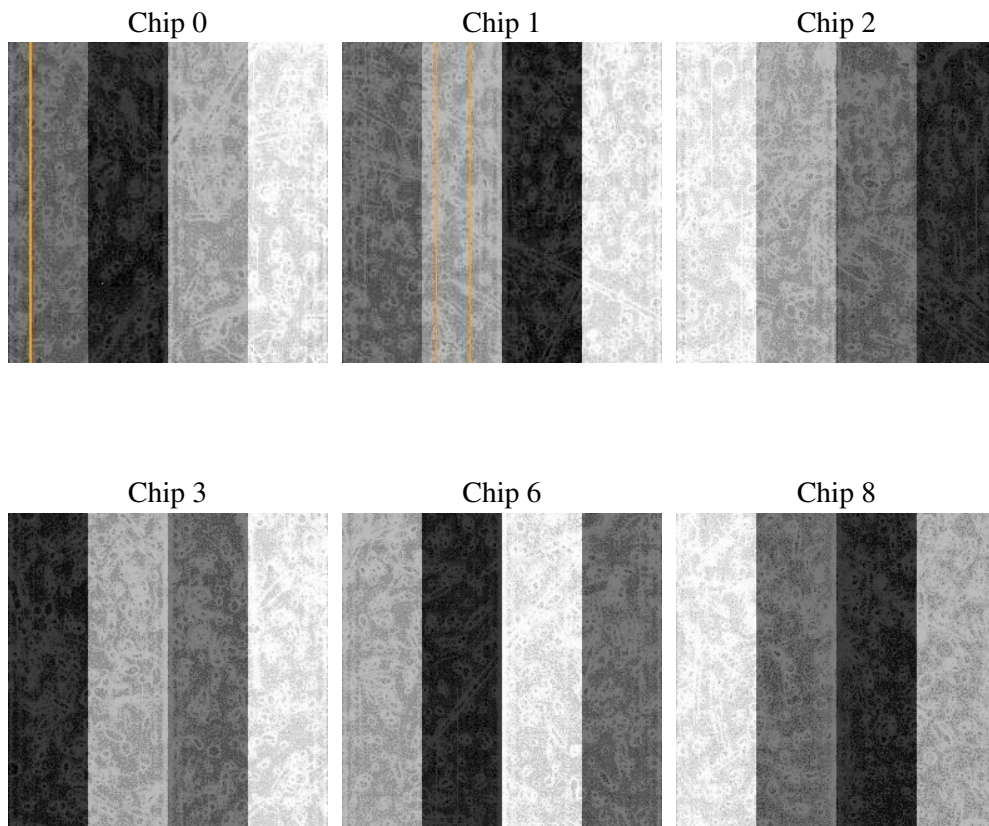
2 OBI

2.1 OBI

2.1.1 Images



2.1.2 Bias



2.1.3 Parameters

| | |
|----------|---------------------|
| obi_num | 0 |
| ascdsver | 7.6.9 |
| caldsver | 3.2.4 |
| date | 2006-12-11T16:35:56 |
| revision | 2 |

| | |
|----------------|-----------------|
| sched_exp_time | 5000.000000 |
| ontime | 4757.7840757966 |
| ontime0 | 4757.78404589 |
| ontime1 | 4757.7840757966 |
| ontime2 | 4757.7840757966 |
| ontime3 | 4757.7840757966 |
| ontime6 | 4757.78404589 |
| ontime8 | 4757.7840757966 |
| l1events | 187206 |

2.1.4 Events

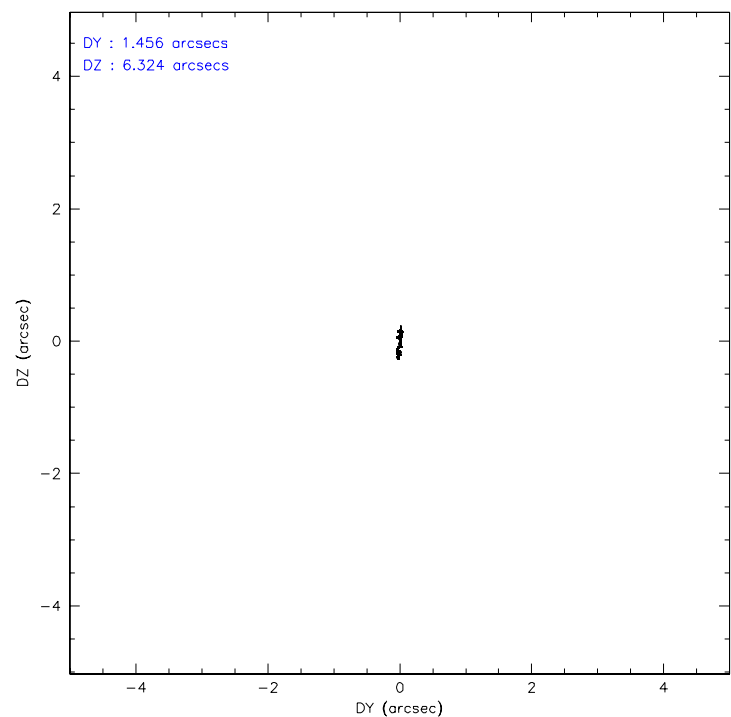
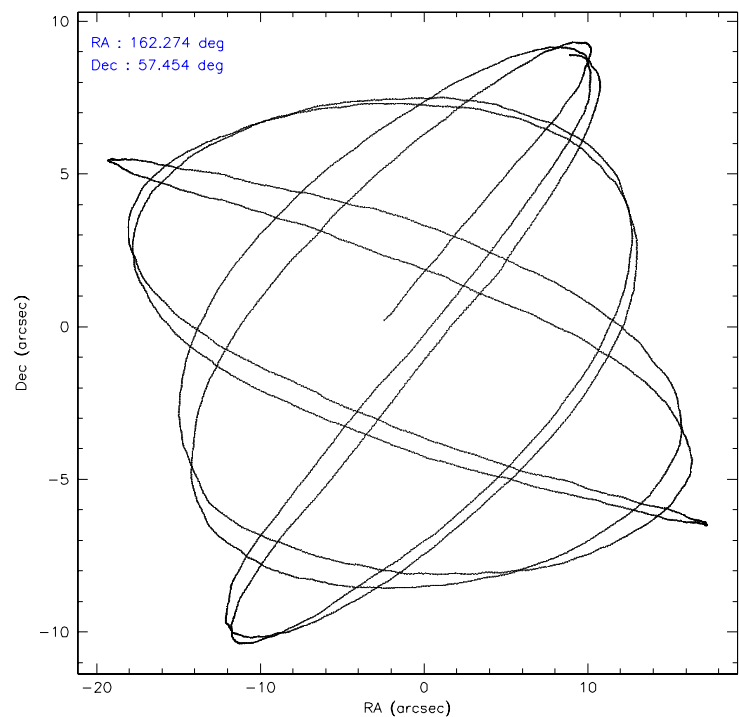
| | ccd 0 | ccd 1 | ccd 2 | ccd 3 | ccd 6 | ccd 8 |
|-----------------|-------|-------|-------|-------|-------|-------|
| level 1 events | 27887 | 29102 | 31227 | 29815 | 29469 | 39706 |
| rejected events | 24439 | 25464 | 27705 | 26447 | 26169 | 32266 |
| rejected % | 87% | 87% | 88% | 88% | 88% | 81% |

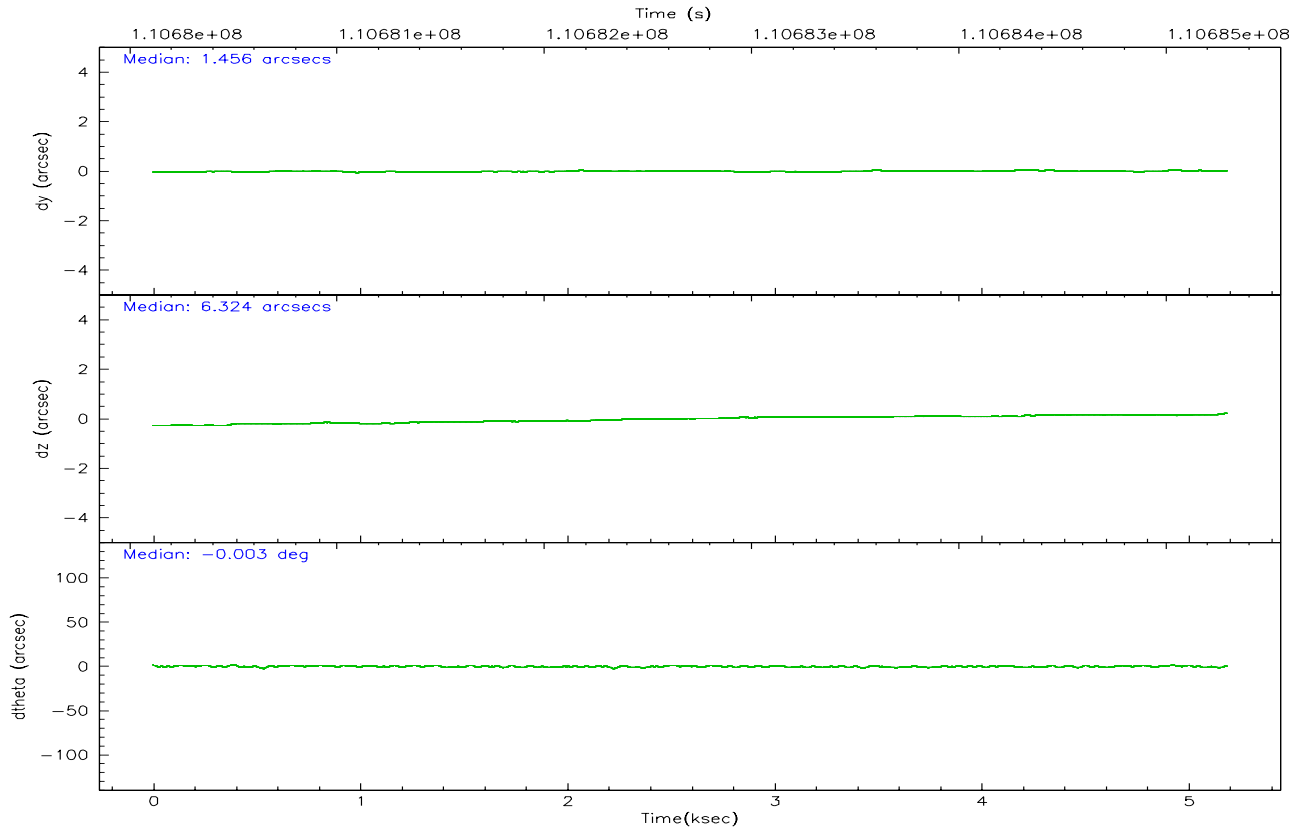
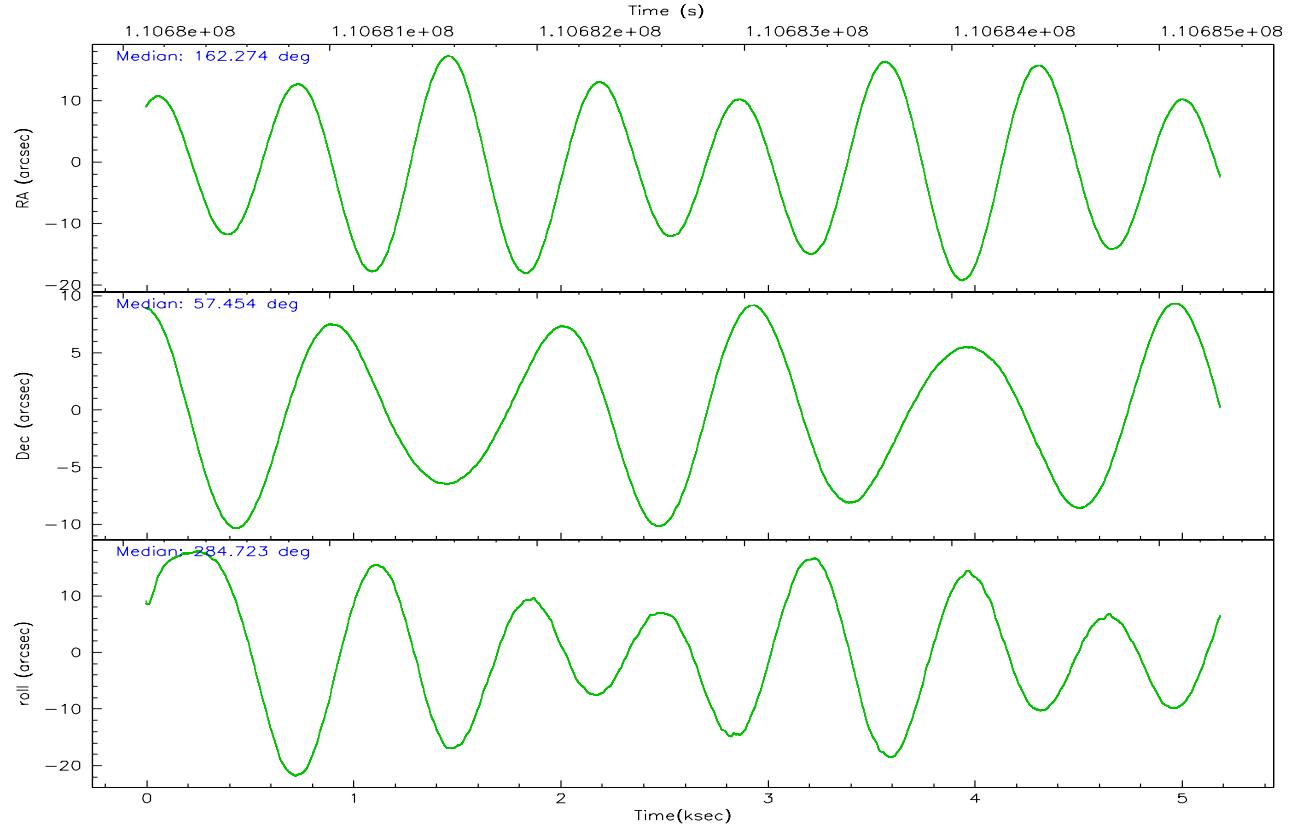
| | ccd 0 | ccd 1 | ccd 2 | ccd 3 | ccd 6 | ccd 8 |
|----------------|-------|-------|-------|-------|-------|-------|
| grade 0 events | 1410 | 1460 | 1506 | 1442 | 1297 | 2300 |
| | 5% | 5% | 4% | 4% | 4% | 5% |
| grade 1 events | 14 | 18 | 12 | 23 | 12 | 29 |
| | 0% | 0% | 0% | 0% | 0% | 0% |
| grade 2 events | 790 | 750 | 773 | 648 | 628 | 1660 |
| | 2% | 2% | 2% | 2% | 2% | 4% |
| grade 3 events | 338 | 385 | 301 | 332 | 401 | 783 |
| | 1% | 1% | 0% | 1% | 1% | 1% |
| grade 4 events | 319 | 384 | 331 | 311 | 341 | 668 |
| | 1% | 1% | 1% | 1% | 1% | 1% |
| grade 5 events | 1052 | 1159 | 1007 | 1196 | 1259 | 1677 |
| | 3% | 3% | 3% | 4% | 4% | 4% |
| grade 6 events | 596 | 665 | 619 | 643 | 636 | 2034 |
| | 2% | 2% | 1% | 2% | 2% | 5% |
| grade 7 events | 23368 | 24281 | 26678 | 25220 | 24895 | 30555 |
| | 83% | 83% | 85% | 84% | 84% | 76% |

2.2 Compared Parameters

| Parameter | Planned | Actual | Parameter | Planned | Actual |
|-----------------------------------|---------------------|-----------------------|---------------------------------------|-----------|---------|
| Instrument | ACIS | ACIS | Obspar format version number | 6 | 6 |
| Detector | ACIS-012368 | ACIS-012368 | Obspar file type | PREDICTED | ACTUAL |
| Grating | NONE | NONE | Obspar update status | NONE | UPDATED |
| Data mode | FAINT | FAINT | Number of optional ACIS chips dropped | 0 | 0 |
| Observation mode | POINTING | POINTING | On-chip summing requested | N | N |
| Pointing RA | 162.237779 | 162.2738321760811 | Subarray requested | NONE | NONE |
| Pointing Dec | 57.473667 | 57.45426436937174 | Alternating exposures requested | N | N |
| Pointing Roll | 284.554568 | 284.7328343709356 | Primary exposure time | 0.000000 | 3.2 |
| SIM focus pos (mm) | -0.782348 | -0.7809083437167272 | | | |
| SIM defocus (mm) | 0 | 0.001439871863259334 | | | |
| SIM translation stage pos (mm) | -233.592463 | -233.5874344608287 | | | |
| SIM translation stage offset (mm) | 0 | -0.005018542100998502 | | | |
| Observation start time | 110680296.184000 | 110679921.07023 | | | |
| Observation start date | 2001-07-05T00:30:32 | 2001-07-05T00:25:21 | | | |
| Observation end time | 110685296.184000 | 110685430.44545 | | | |
| Observation end date | 2001-07-05T01:53:52 | 2001-07-05T01:57:10 | | | |
| Read mode | TIMED | TIMED | | | |

2.3 Aspect



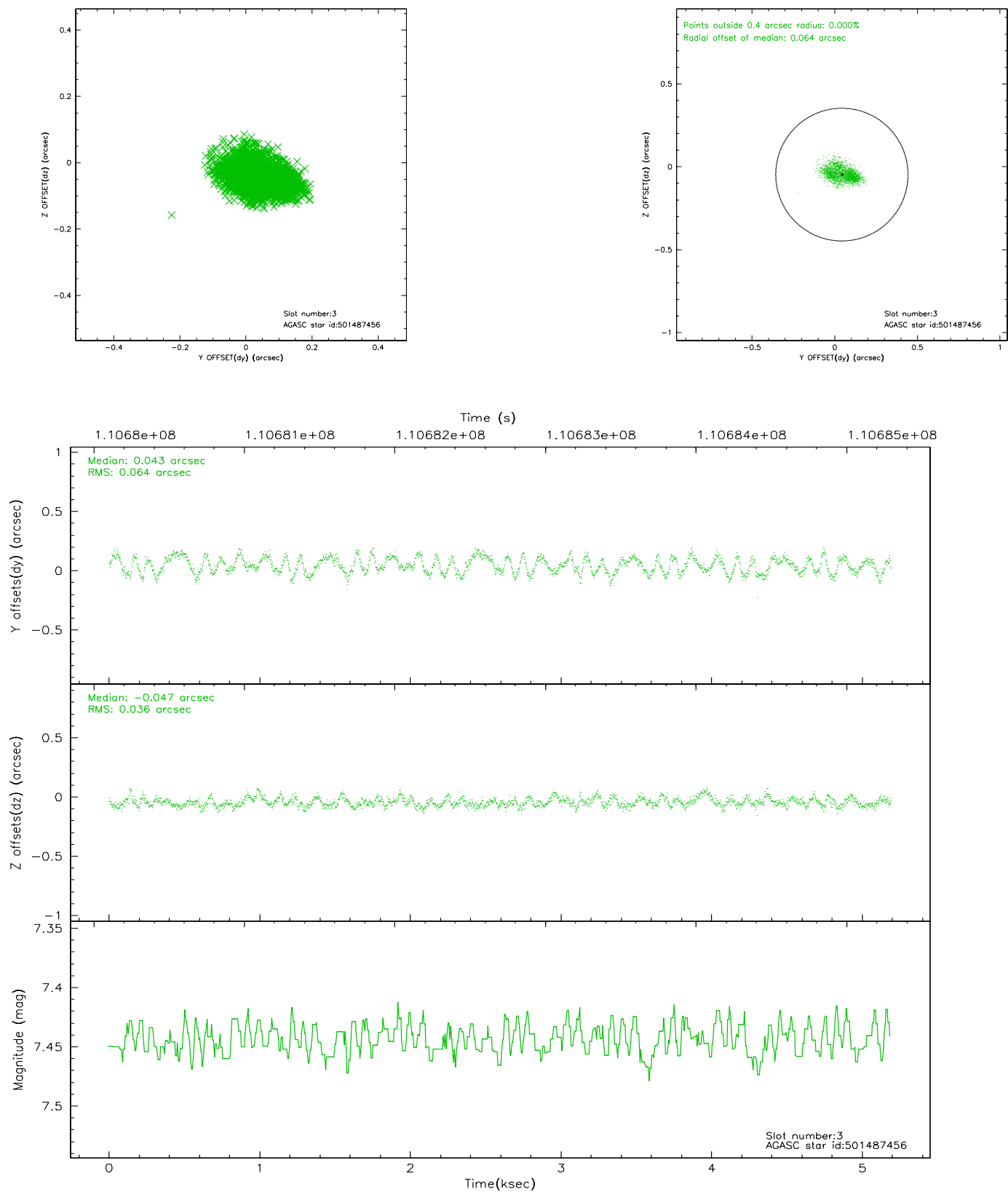


Slot Statistics

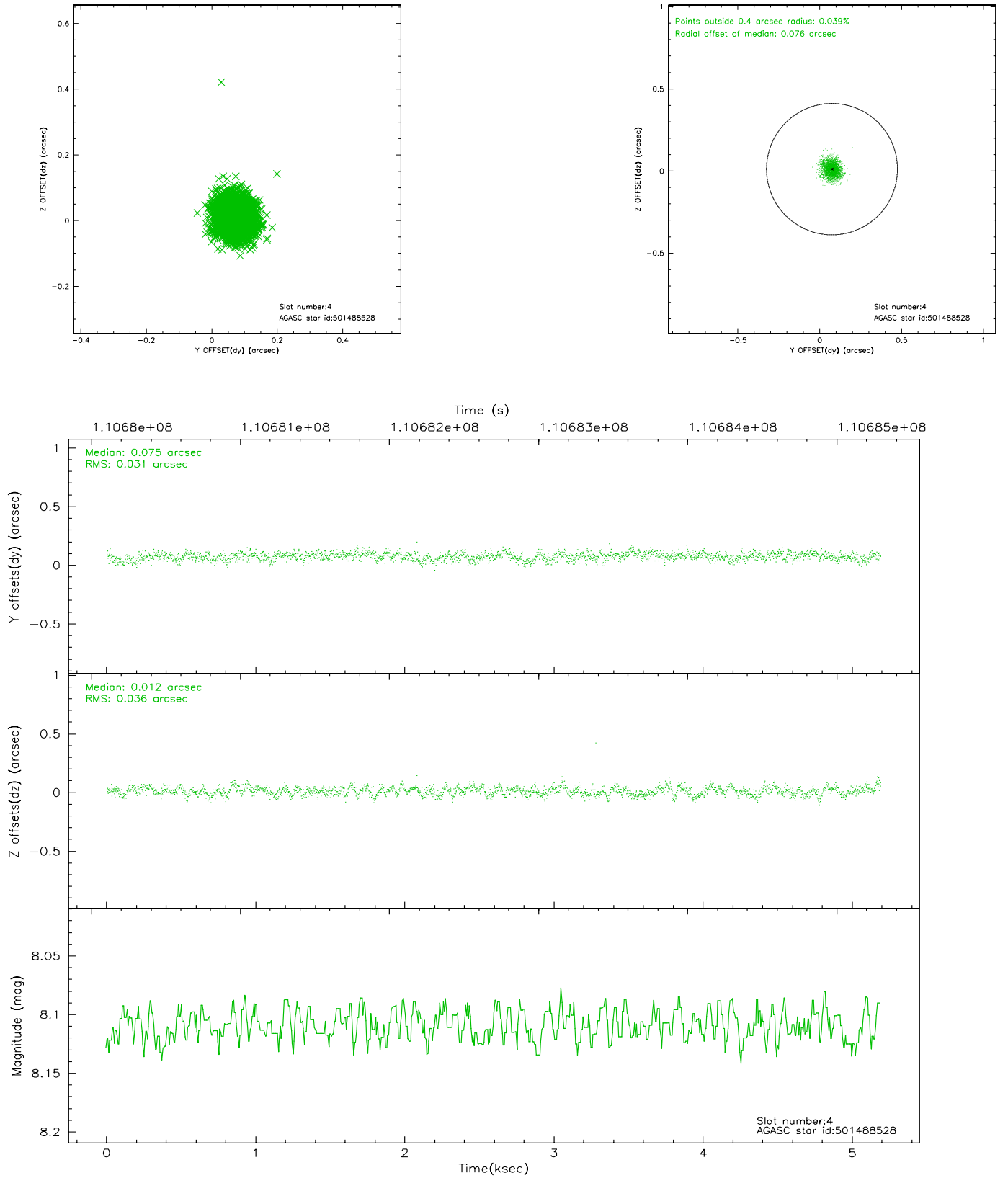
| slot | status | id | mag | n_pts | med_dy | med_dz | dr1 | dr2 | ra | dec | mean_y | mean_z |
|------|--------|-----------|------|-------|--------|--------|-------|-------|------------|-----------|----------|----------|
| 0 | FID | ACIS-I-2 | 7.15 | 1265 | -0.021 | -0.047 | 0.009 | 0.015 | 0.000000 | 0.000000 | -755.80 | -836.10 |
| 1 | FID | ACIS-I-4 | 7.18 | 1265 | -0.082 | 0.034 | 0.006 | 0.009 | 0.000000 | 0.000000 | 2157.65 | 1069.59 |
| 2 | FID | ACIS-I-5 | 7.23 | 1266 | 0.001 | 0.082 | 0.009 | 0.014 | 0.000000 | 0.000000 | -1808.12 | 1068.79 |
| 3 | GUIDE | 501487456 | 7.44 | 2531 | 0.043 | -0.047 | 0.080 | 0.120 | 161.499463 | 56.920840 | 1554.52 | -1901.77 |
| 4 | GUIDE | 501488528 | 8.11 | 2532 | 0.075 | 0.012 | 0.050 | 0.080 | 162.150935 | 57.312270 | 520.65 | -309.82 |
| 5 | GUIDE | 501876968 | 9.39 | 2532 | -0.032 | -0.044 | 0.084 | 0.135 | 161.243582 | 57.954681 | -2166.40 | -1399.66 |
| 6 | GUIDE | 501877264 | 9.31 | 2530 | -0.036 | 0.065 | 0.098 | 0.156 | 163.254394 | 57.702218 | -320.42 | 2102.92 |
| 7 | GUIDE | 501882000 | 9.61 | 2529 | -0.052 | 0.016 | 0.090 | 0.145 | 160.921161 | 57.857731 | -1995.51 | -2086.28 |

2.4 Star Slots

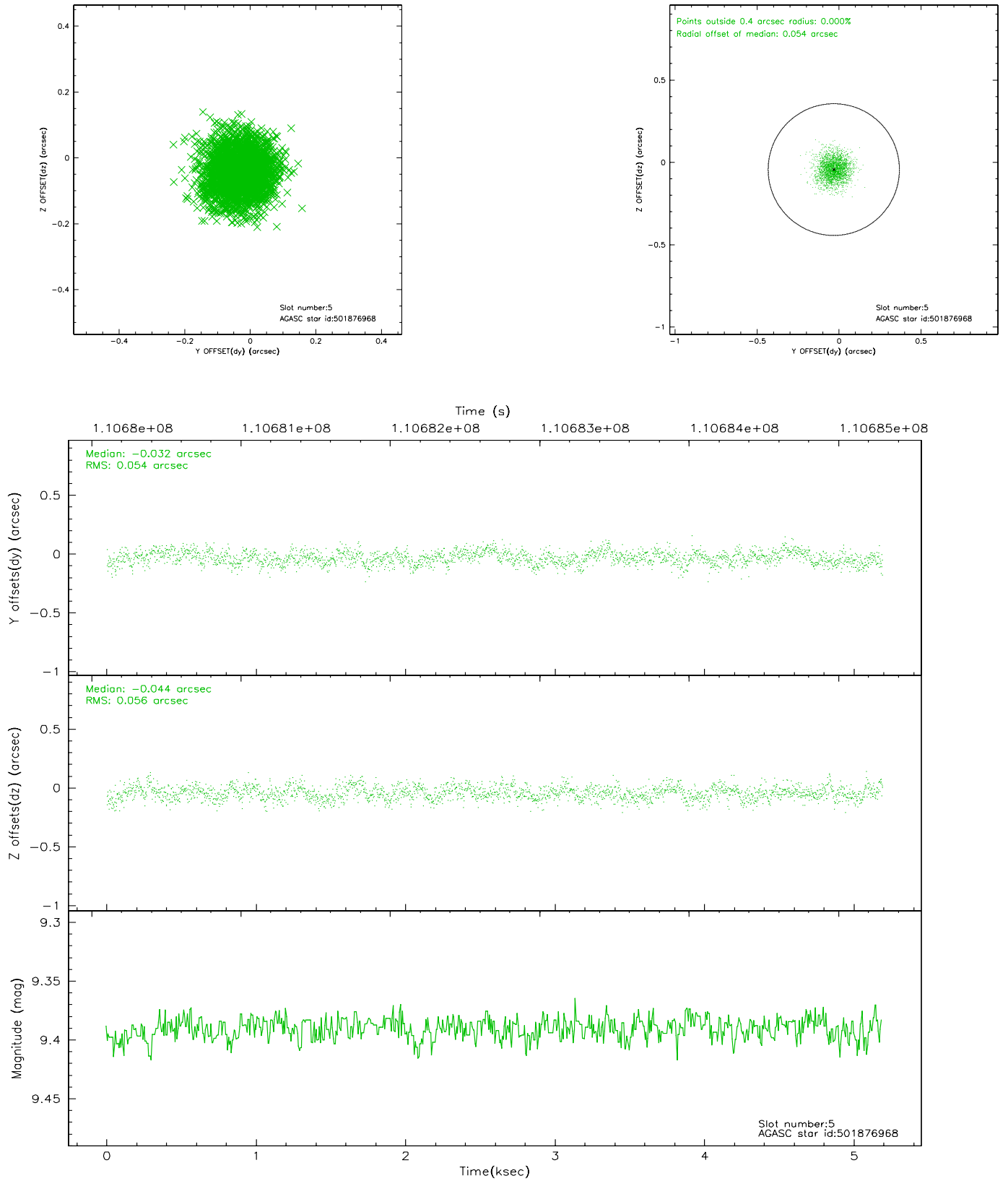
2.4.1 Slot 3



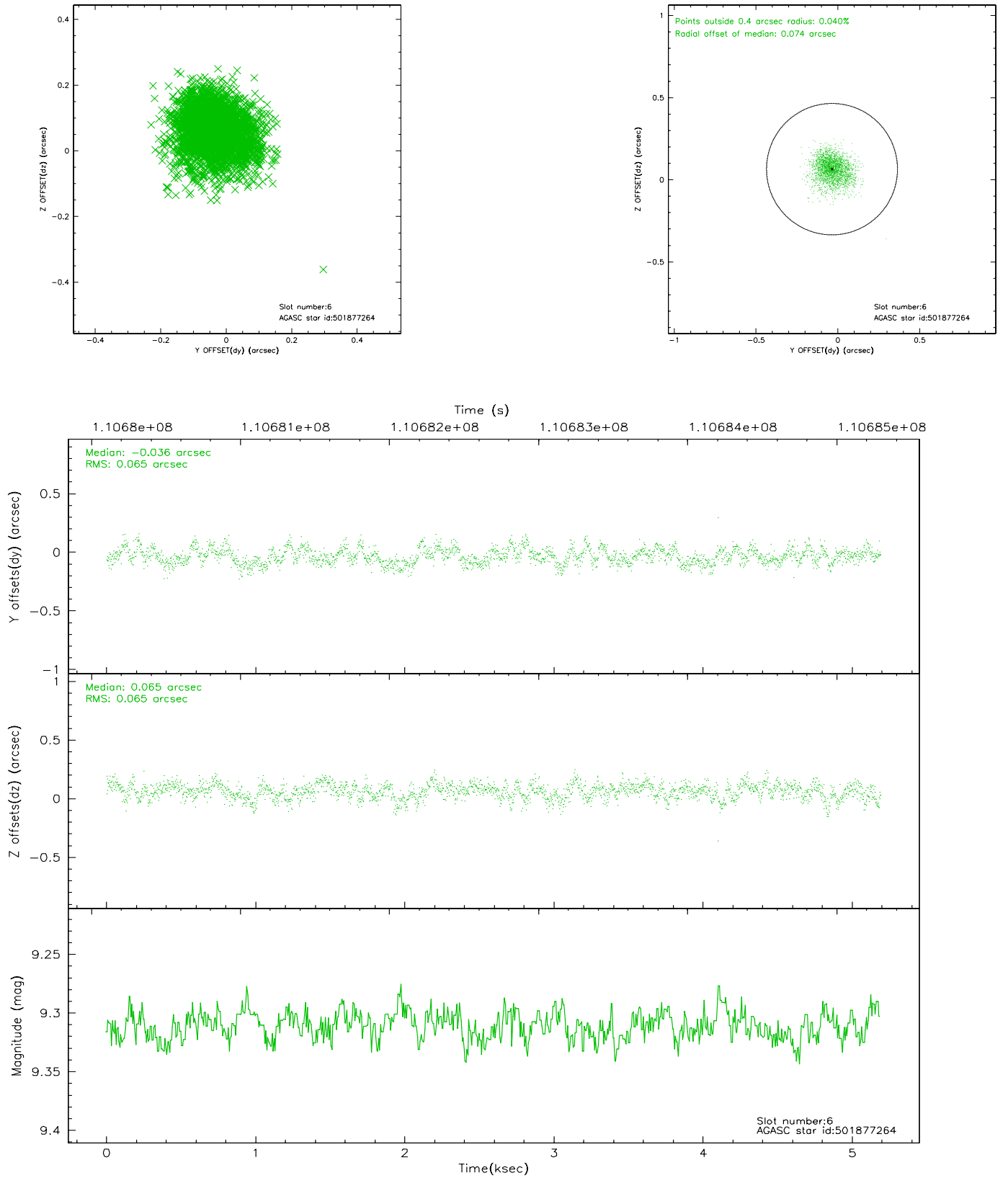
2.4.2 Slot 4



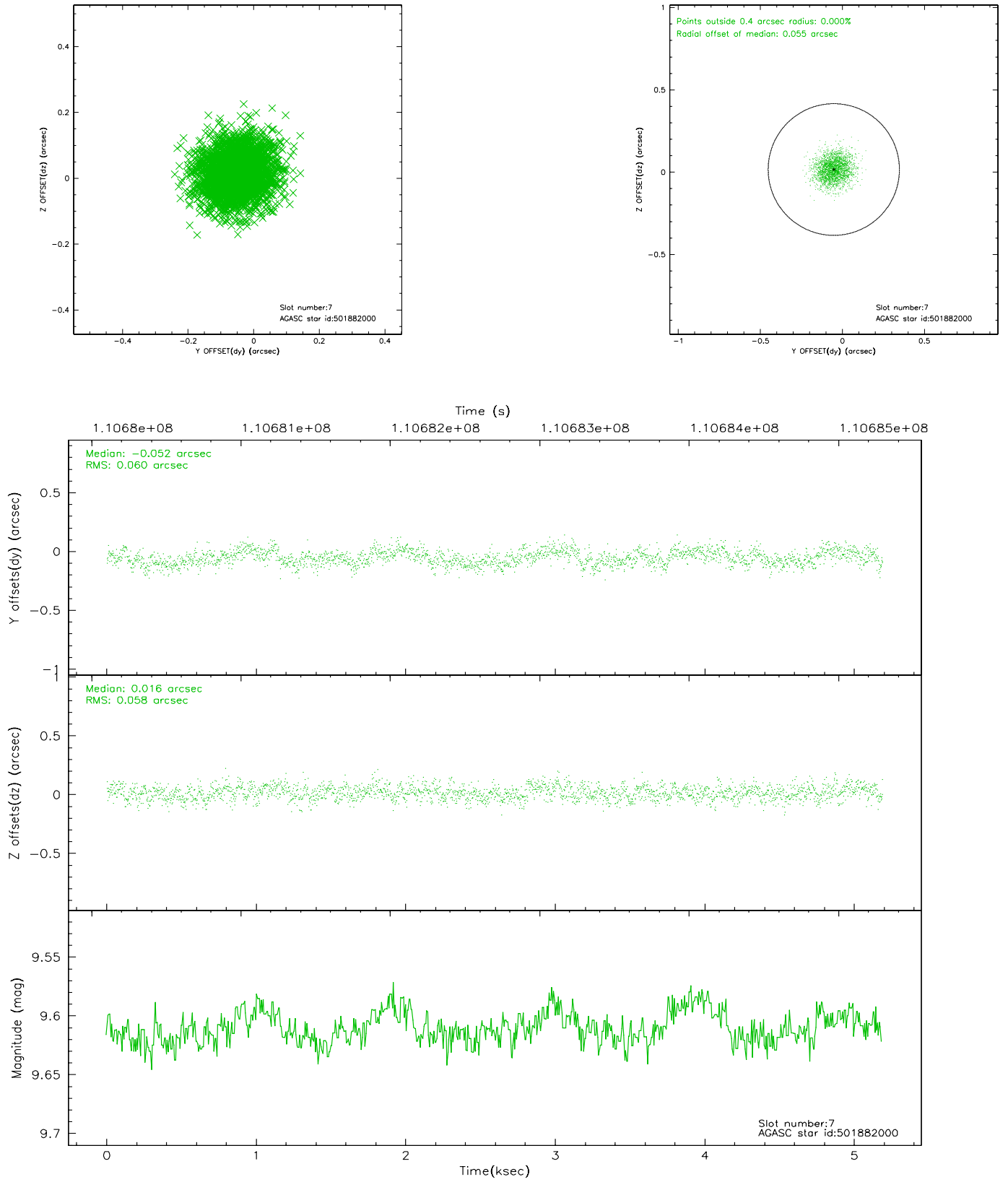
2.4.3 Slot 5



2.4.4 Slot 6

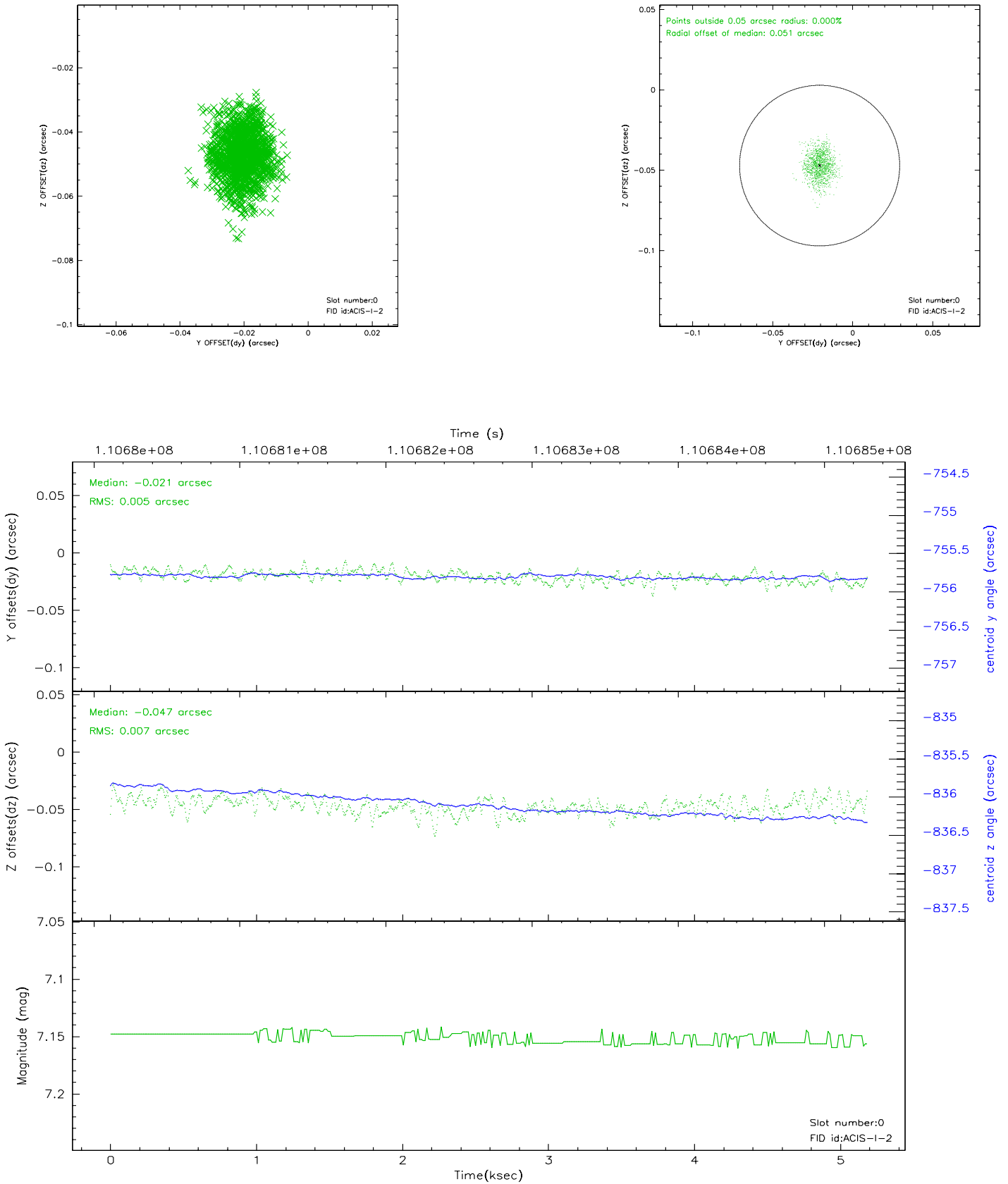


2.4.5 Slot 7

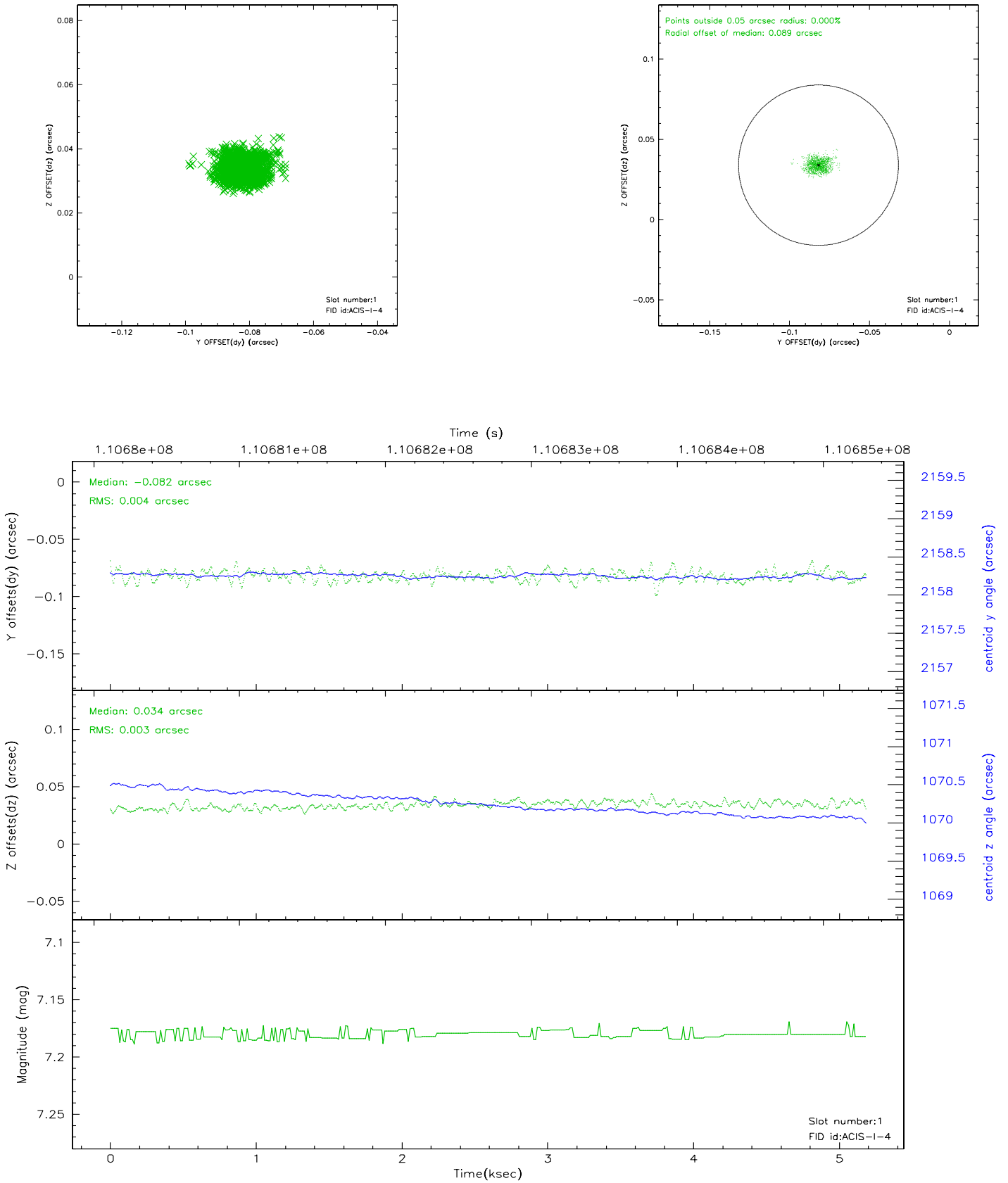


2.5 FID Slots

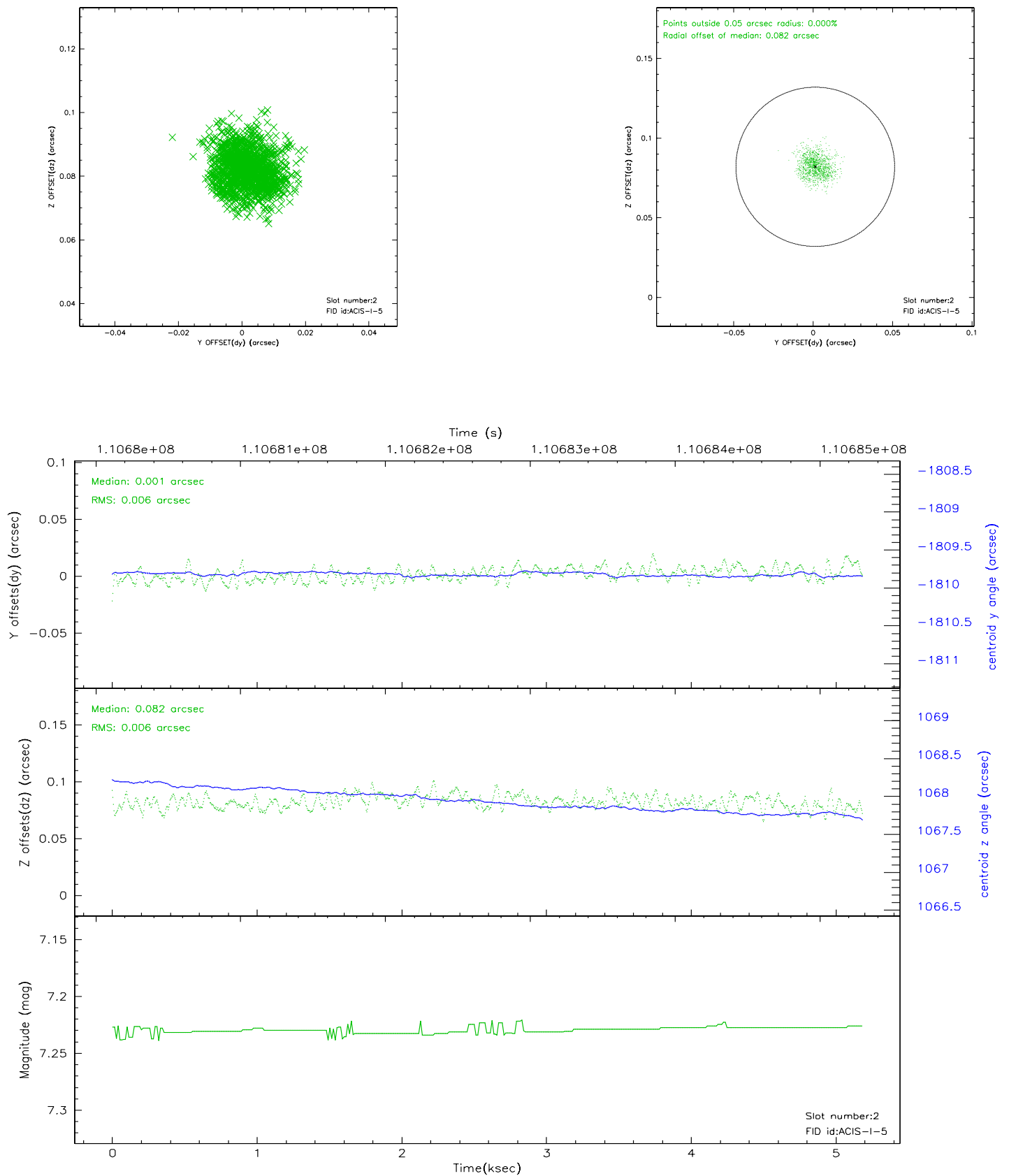
2.5.1 Slot 0



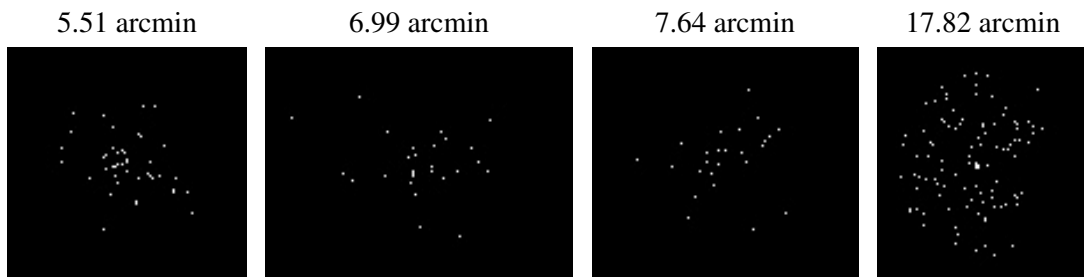
2.5.2 Slot 1



2.5.3 Slot 2



3 Point Sources



A Summary

A.1 Status

| | |
|----------------------------|---------------|
| V&V Scientist | Beth Sundheim |
| V&V Date (YYYY-MM-DD) | 2006.12.11 |
| V&V Edition | 1 |
| V&V Disposition and Status | OK |
| V&V Charge Time | 4.755 |

A.2 Comments