

V&V Reference Report

L2 ASCDS Version : 7.6.9

Observation 1673 - L2 Version 001
Chandra X-Ray Center

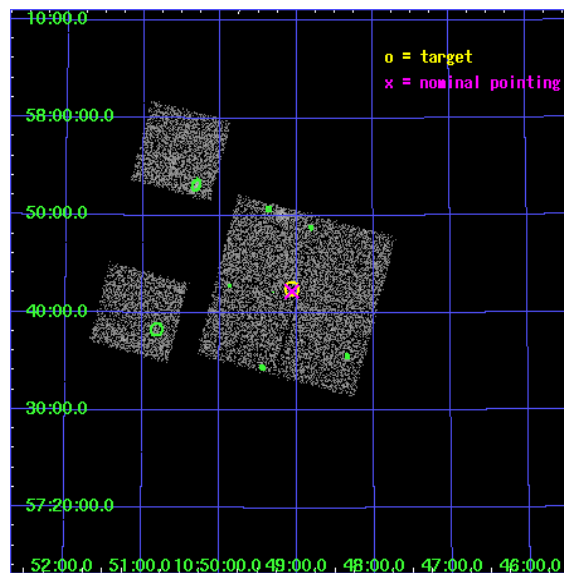
L2 Processing Date : Dec 11 2006

Contents

1	Front	2
2	OBI	3
2.1	OBI	3
2.1.1	Images	3
2.1.2	Bias	3
2.1.3	Parameters	4
2.1.4	Events	4
2.2	Compared Parameters	5
2.3	Aspect	6
2.4	Star Slots	9
2.4.1	Slot 3	9
2.4.2	Slot 4	10
2.4.3	Slot 5	11
2.4.4	Slot 6	12
2.4.5	Slot 7	13
2.5	FID Slots	14
2.5.1	Slot 0	14
2.5.2	Slot 1	15
2.5.3	Slot 2	16
3	Point Sources	17
A	Summary	18
A.1	Status	18
A.2	Comments	18

1 Front

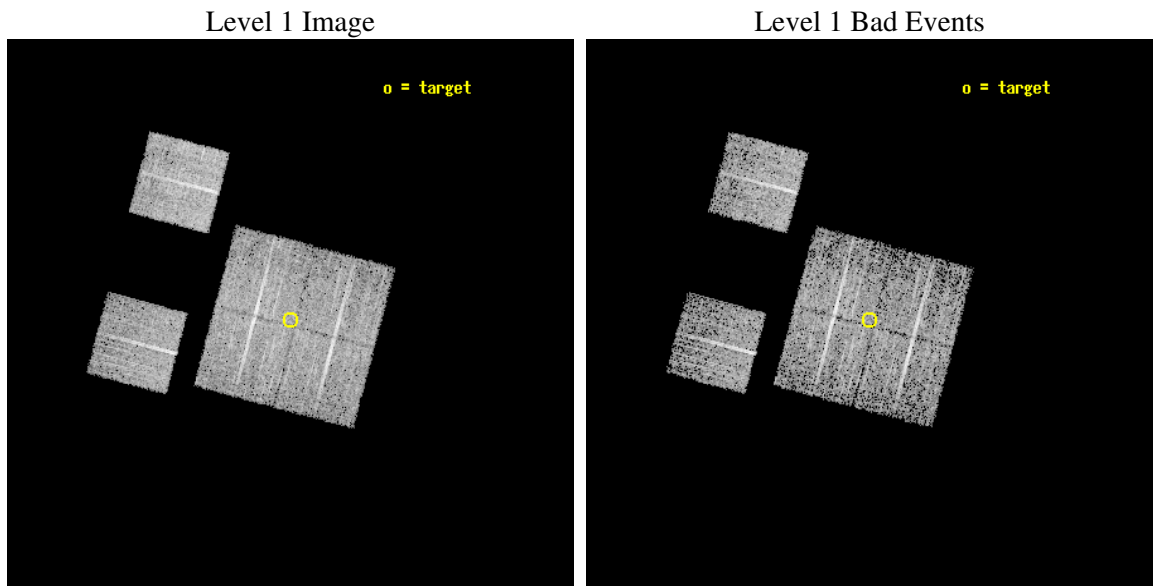
seq_num	900032
obs_id	1673
title	LOCKMAN HOLE SHALLOW SURVEY
observer	Dr. Stephen Murray
object	LOCKMAN HOLE #14
dtcycle	0
cycle	P
ra_targ	162.266667
dec_targ	57.708889
ra_nom	162.26549668596
dec_nom	57.704091873768
roll_nom	284.83431081729
revision	2
ontime	4960.0000046194
livetime	4897.1934980074
ontime0	4960.0000046194
ontime1	4960.0000046194
ontime2	4960.0000046194
ontime3	4960.0000046194
ontime6	4960.0000046194
ontime8	4960.0000046194
l2events	19538



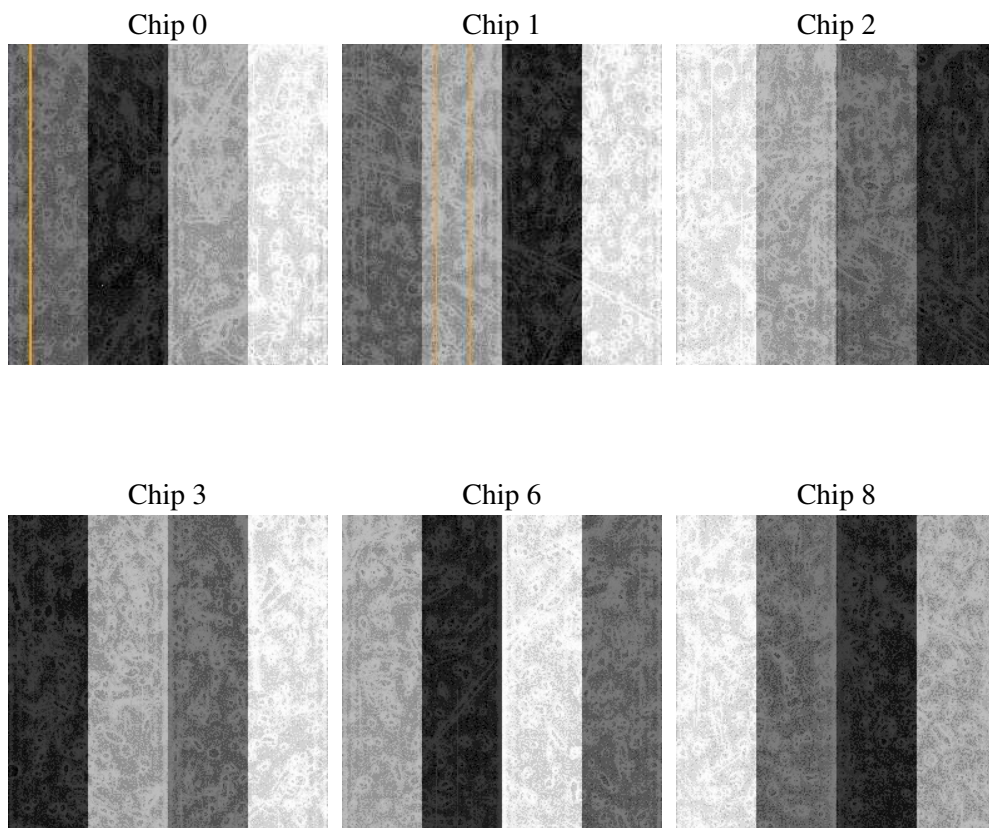
2 OBI

2.1 OBI

2.1.1 Images



2.1.2 Bias



2.1.3 Parameters

obi_num	0
ascdsver	7.6.9
caldsver	3.2.4
date	2006-12-11T16:37:35
revision	2

sched_exp_time	5000.000000
ontime	4965.209654212
ontime0	4965.209654212
ontime1	4965.209654212
ontime2	4965.209654212
ontime3	4965.209654212
ontime6	4965.209654212
ontime8	4965.209654212
l1events	198782

2.1.4 Events

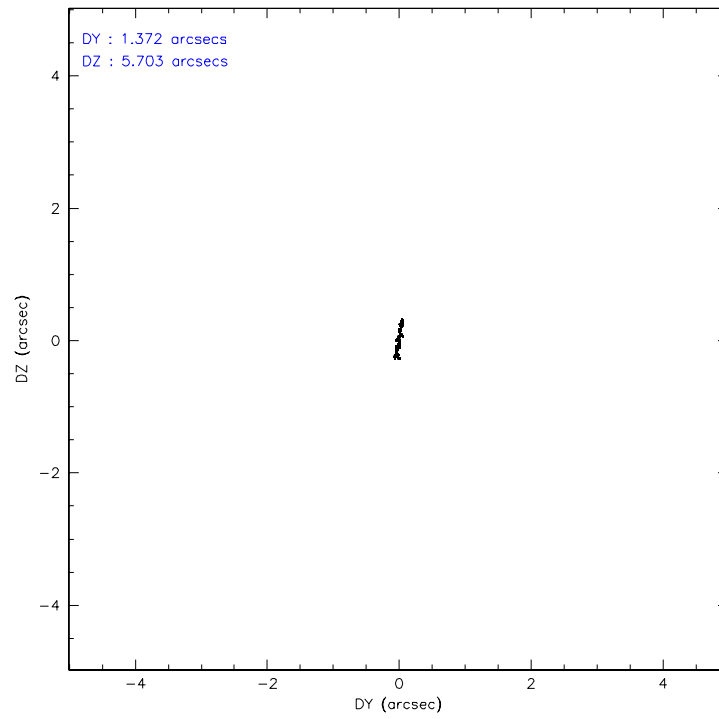
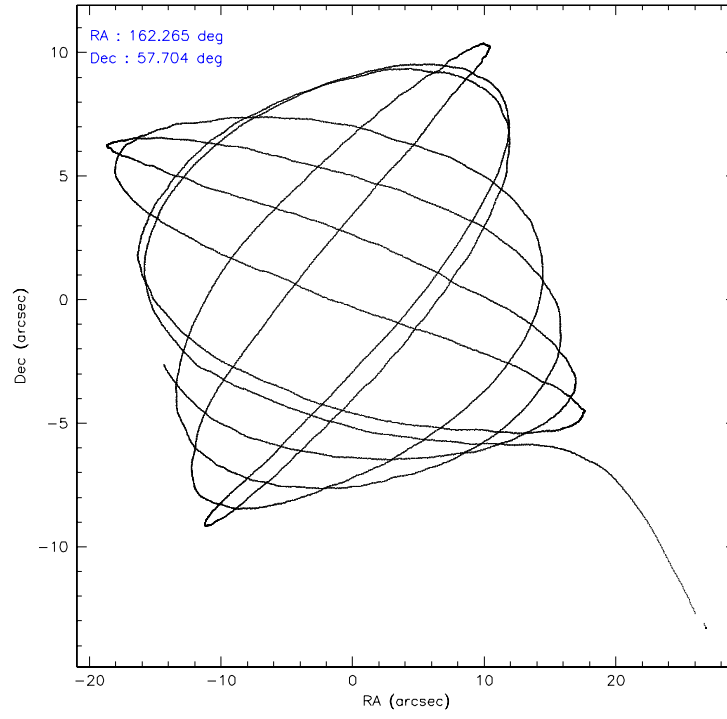
	ccd 0	ccd 1	ccd 2	ccd 3	ccd 6	ccd 8
level 1 events	29865	29645	32695	33073	31381	42123
rejected events	26238	25805	29070	29074	27874	34136
rejected %	87%	87%	88%	87%	88%	81%

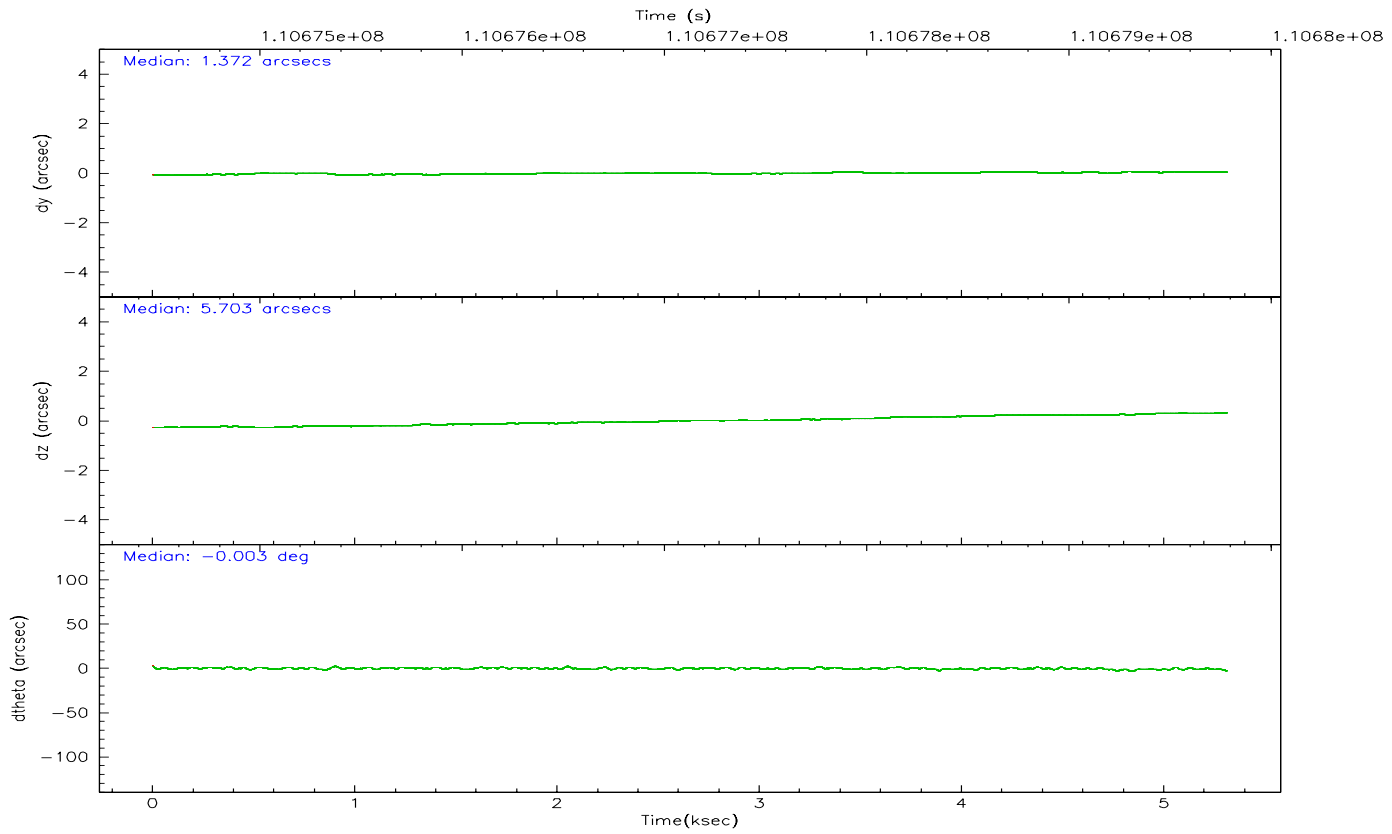
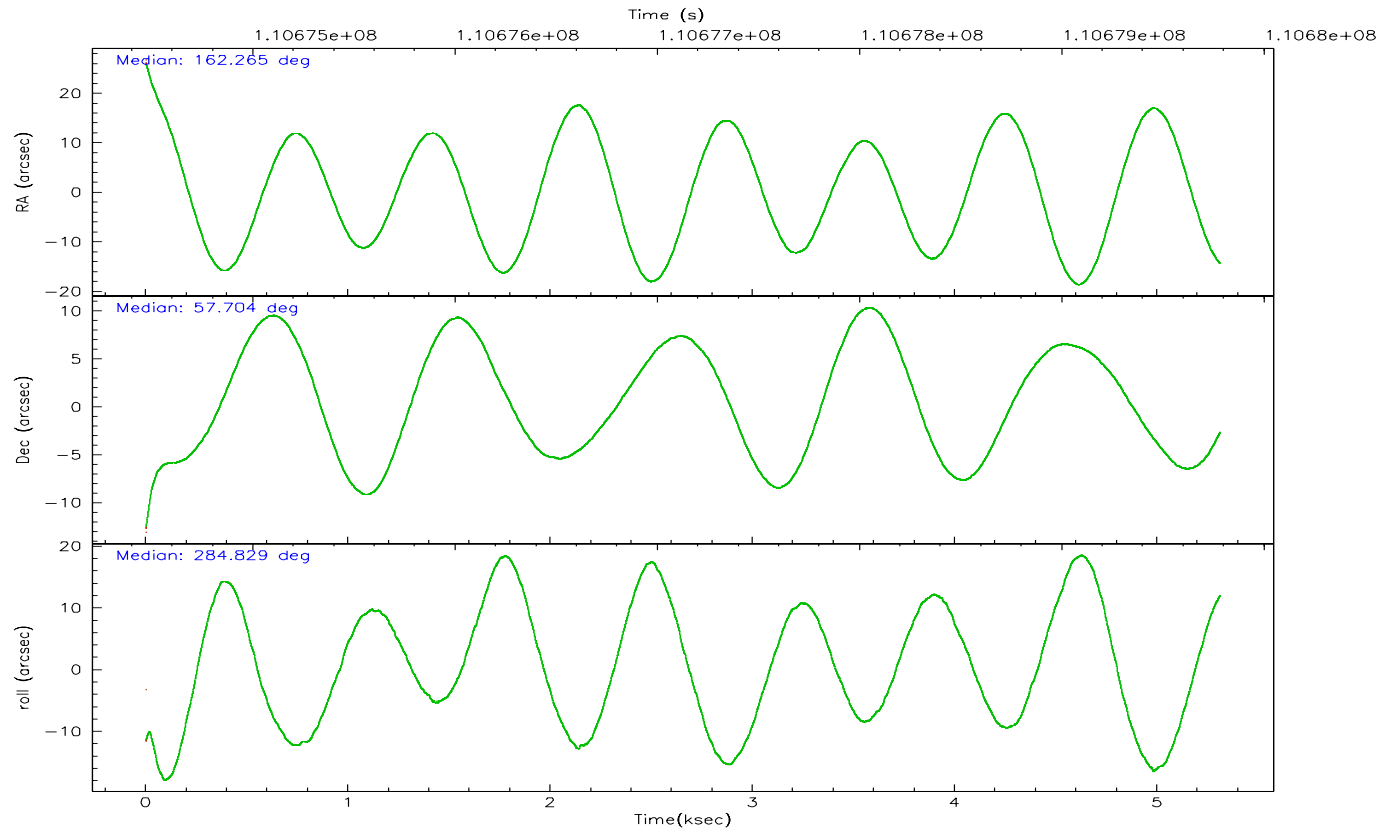
	ccd 0	ccd 1	ccd 2	ccd 3	ccd 6	ccd 8
grade 0 events	1545	1542	1564	1870	1421	2534
	5%	5%	4%	5%	4%	6%
grade 1 events	14	15	18	13	11	31
	0%	0%	0%	0%	0%	0%
grade 2 events	762	752	747	765	727	1731
	2%	2%	2%	2%	2%	4%
grade 3 events	357	408	343	337	354	883
	1%	1%	1%	1%	1%	2%
grade 4 events	319	377	333	376	345	855
	1%	1%	1%	1%	1%	2%
grade 5 events	1127	1275	1136	1244	1315	1795
	3%	4%	3%	3%	4%	4%
grade 6 events	648	766	646	657	666	2009
	2%	2%	1%	1%	2%	4%
grade 7 events	25093	24510	27908	27811	26542	32285
	84%	82%	85%	84%	84%	76%

2.2 Compared Parameters

Parameter	Planned	Actual	Parameter	Planned	Actual
Instrument	ACIS	ACIS	Obspar format version number	6	6
Detector	ACIS-012368	ACIS-012368	Obspar file type	PREDICTED	ACTUAL
Grating	NONE	NONE	Obspar update status	NONE	UPDATED
Data mode	FAINT	FAINT	Number of optional ACIS chips dropped	0	0
Observation mode	POINTING	POINTING	On-chip summing requested	N	N
Pointing RA	162.229147	162.2654966859561	Subarray requested	NONE	NONE
Pointing Dec	57.723632	57.70409187376772	Alternating exposures requested	N	N
Pointing Roll	284.656324	284.8343108172858	Primary exposure time	0.000000	3.2
SIM focus pos (mm)	-0.782348	-0.7809083437167272			
SIM defocus (mm)	0	0.001439871863259334			
SIM translation stage pos (mm)	-233.592463	-233.5874344608287			
SIM translation stage offset (mm)	0	-0.005018542100998502			
Observation start time	110674786.184000	110673761.84499			
Observation start date	2001-07-04T22:58:42	2001-07-04T22:42:41			
Observation end time	110679786.184000	110679921.07023			
Observation end date	2001-07-05T00:22:02	2001-07-05T00:25:21			
Read mode	TIMED	TIMED			

2.3 Aspect



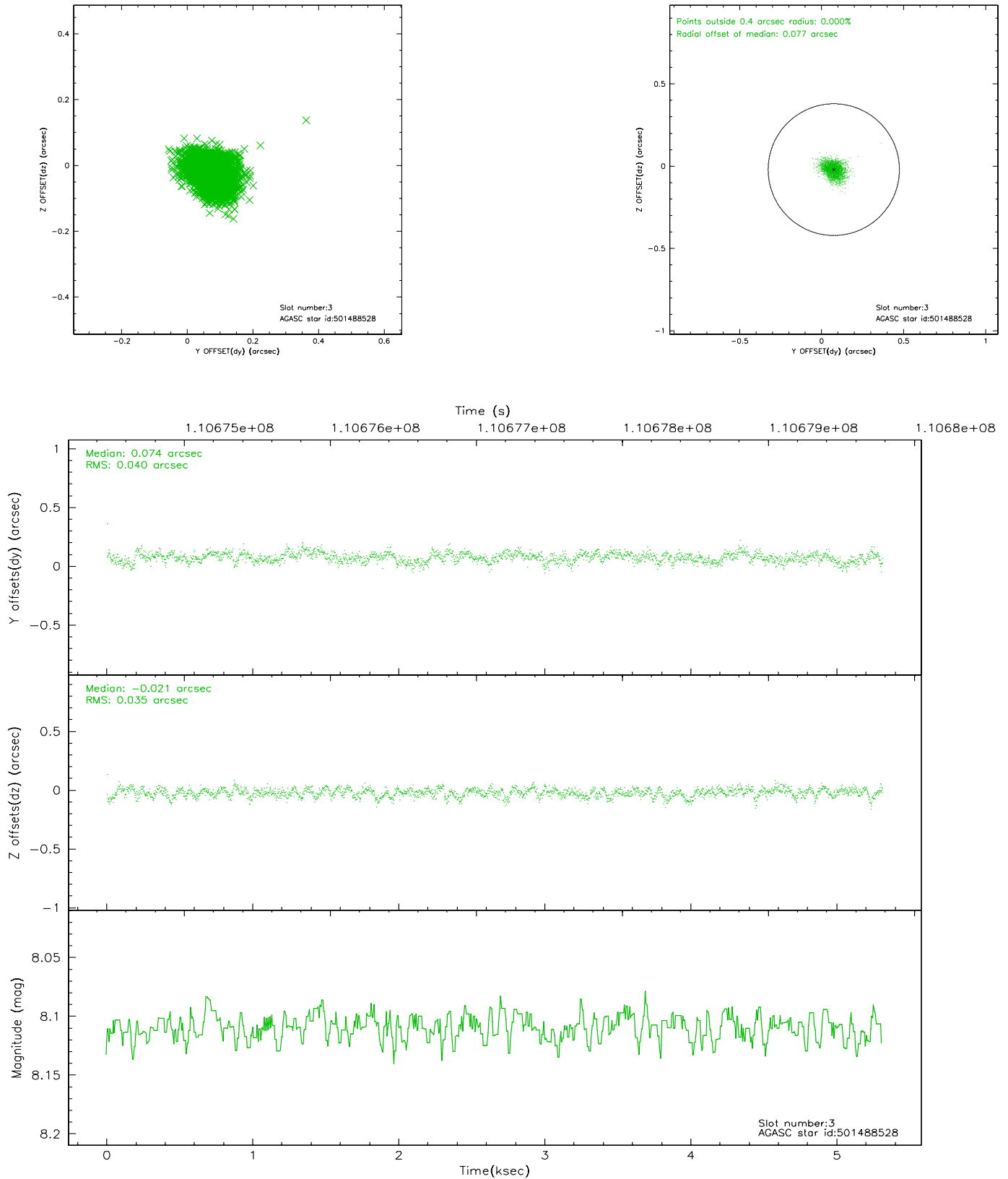


Slot Statistics

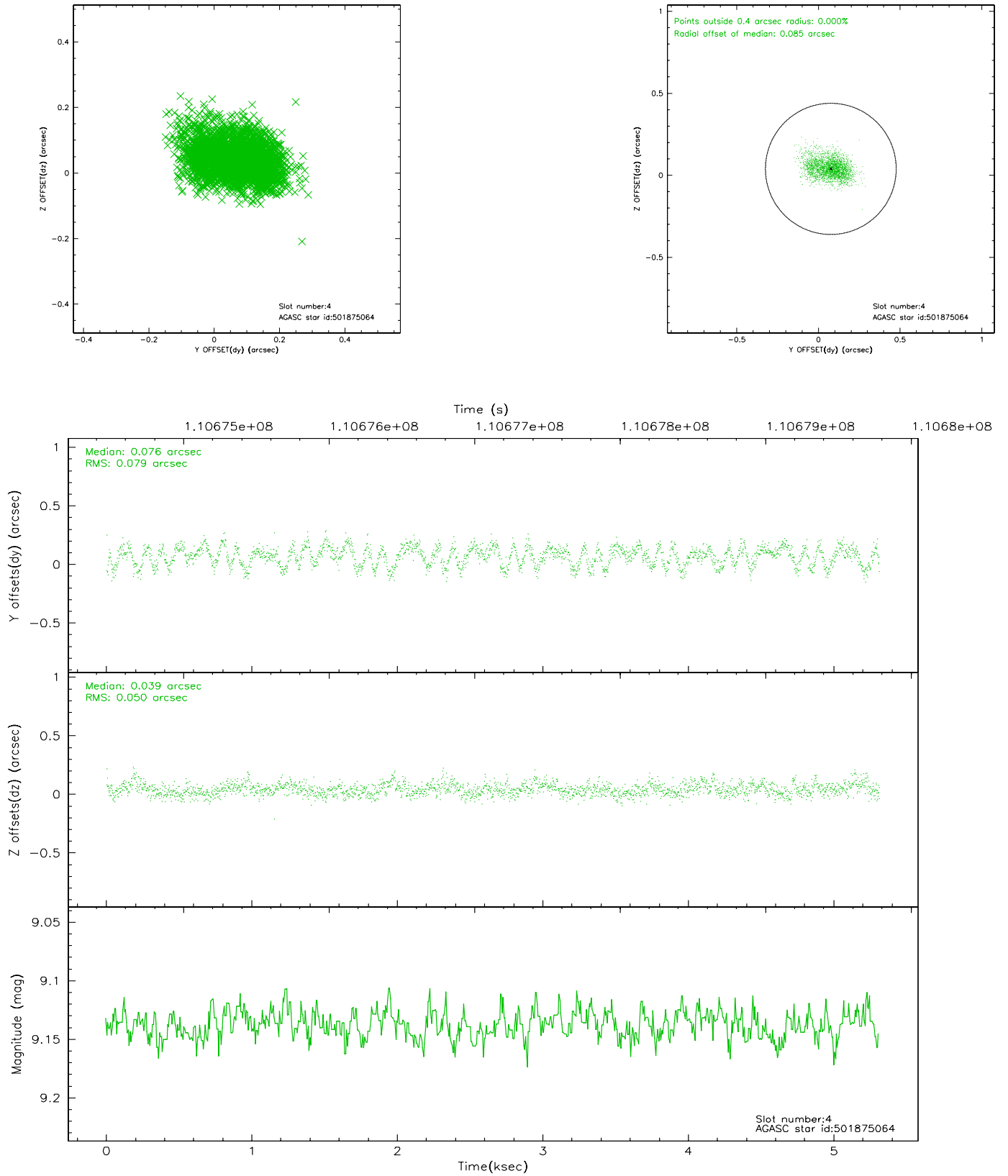
slot	status	id	mag	n_pts	med_dy	med_dz	dr1	dr2	ra	dec	mean_y	mean_z
0	FID	ACIS-I-2	7.15	1296	-0.030	0.013	0.006	0.010	0.000000	0.000000	-755.71	-835.43
1	FID	ACIS-I-4	7.18	1295	-0.069	0.024	0.008	0.014	0.000000	0.000000	2157.75	1070.25
2	FID	ACIS-I-6	7.27	1295	-0.001	0.026	0.011	0.019	0.000000	0.000000	405.81	1713.69
3	GUIDE	501488528	8.11	2591	0.074	-0.021	0.055	0.092	162.150935	57.312270	1393.74	-521.15
4	GUIDE	501875064	9.14	2591	0.076	0.039	0.101	0.162	163.017696	58.369846	-1882.57	2031.04
5	GUIDE	501876968	9.38	2591	-0.035	-0.159	0.107	0.173	161.243582	57.954681	-1295.53	-1606.23
6	GUIDE	501877264	9.29	2588	-0.062	0.137	0.107	0.163	163.254394	57.702218	557.77	1892.34
7	GUIDE	501882000	9.61	2568	-0.049	0.004	0.120	0.186	160.921161	57.857731	-1124.55	-2294.08

2.4 Star Slots

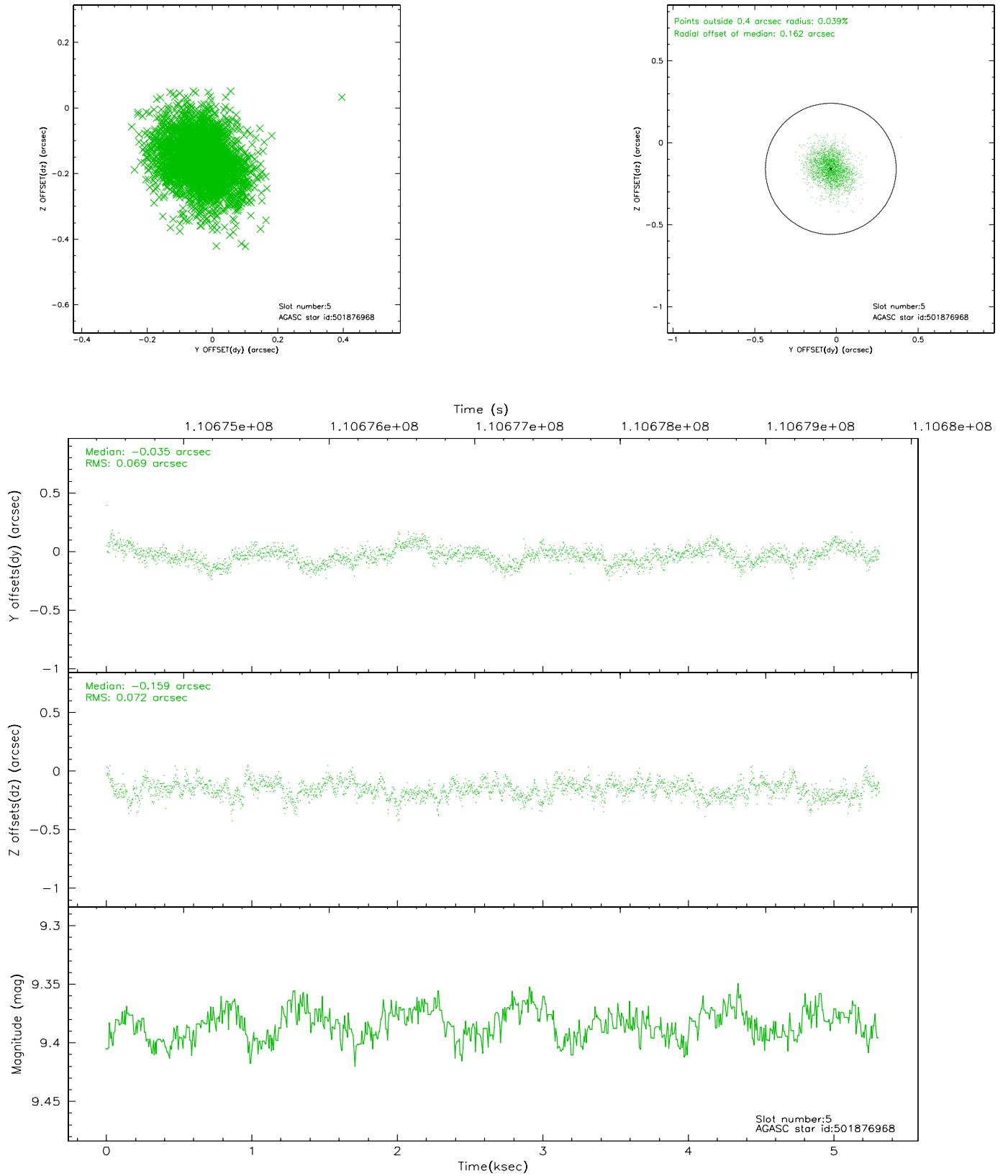
2.4.1 Slot 3



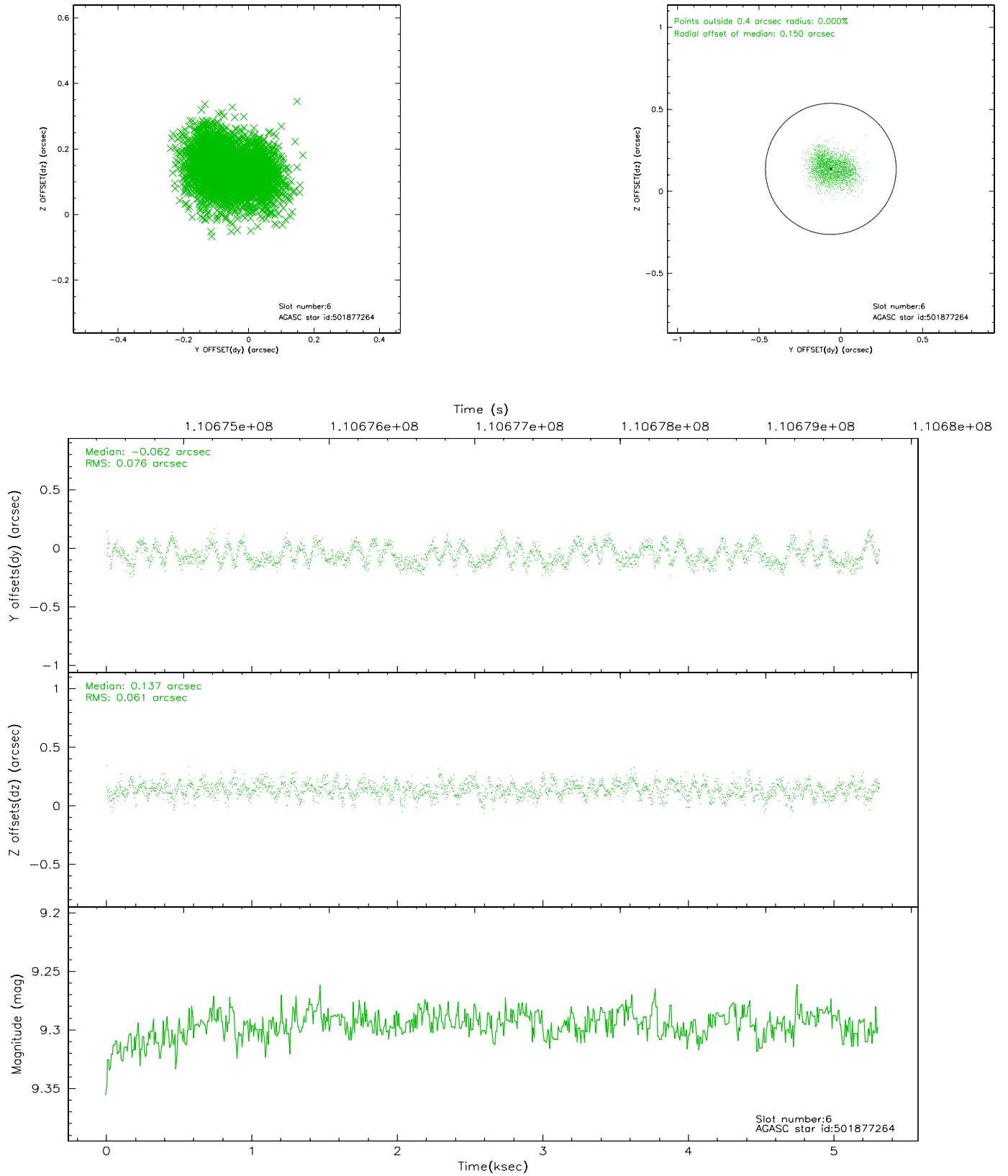
2.4.2 Slot 4



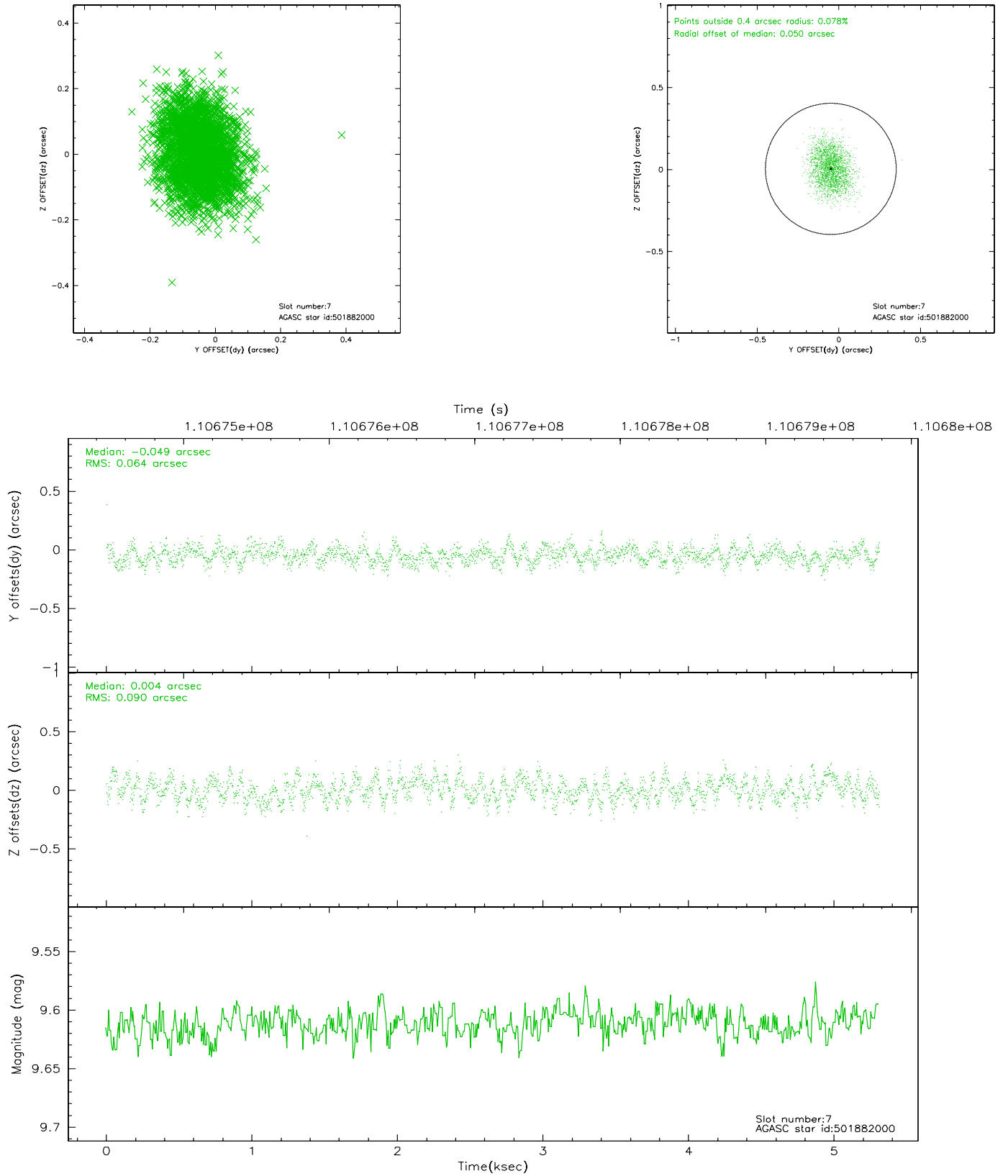
2.4.3 Slot 5



2.4.4 Slot 6

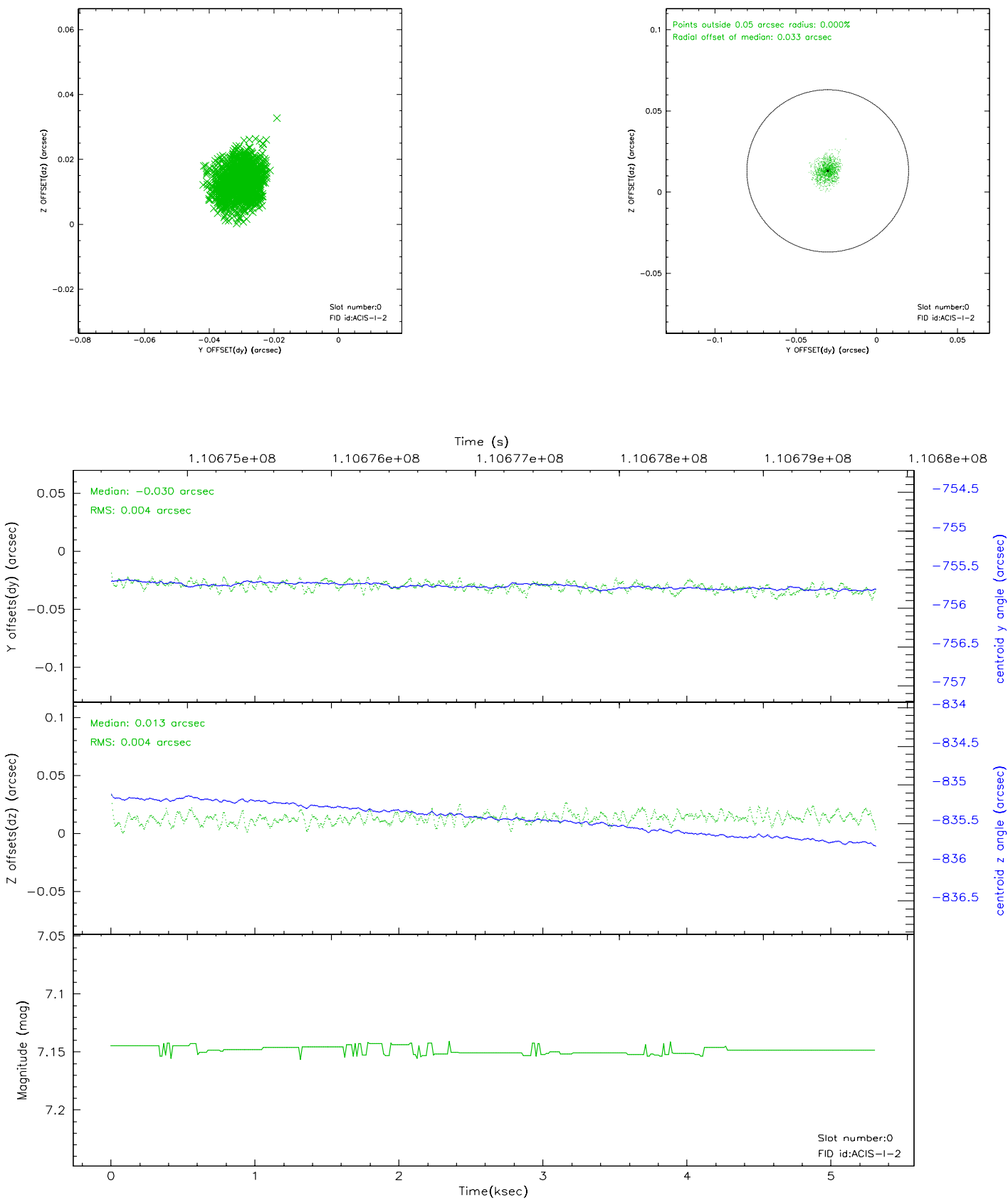


2.4.5 Slot 7

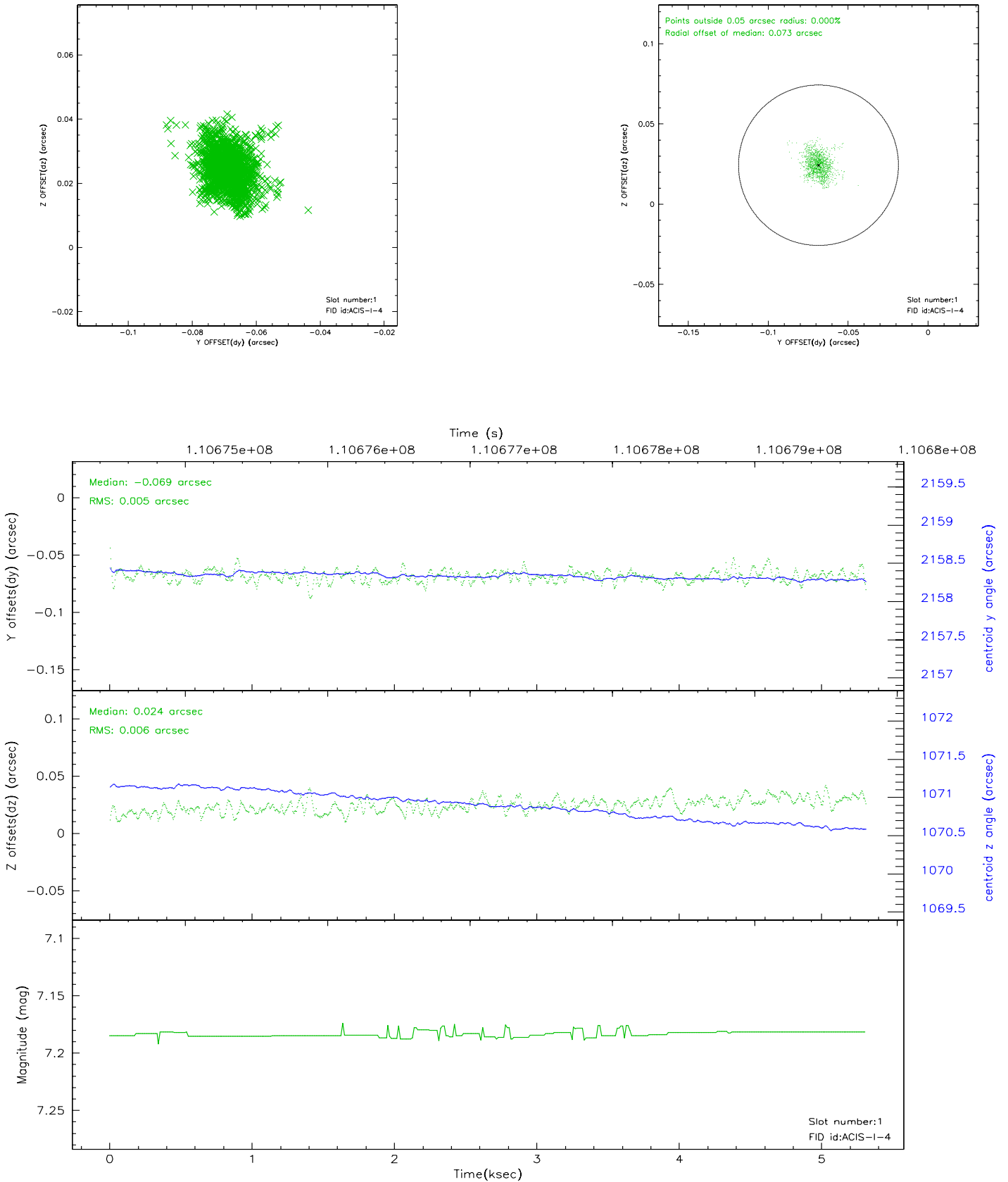


2.5 FID Slots

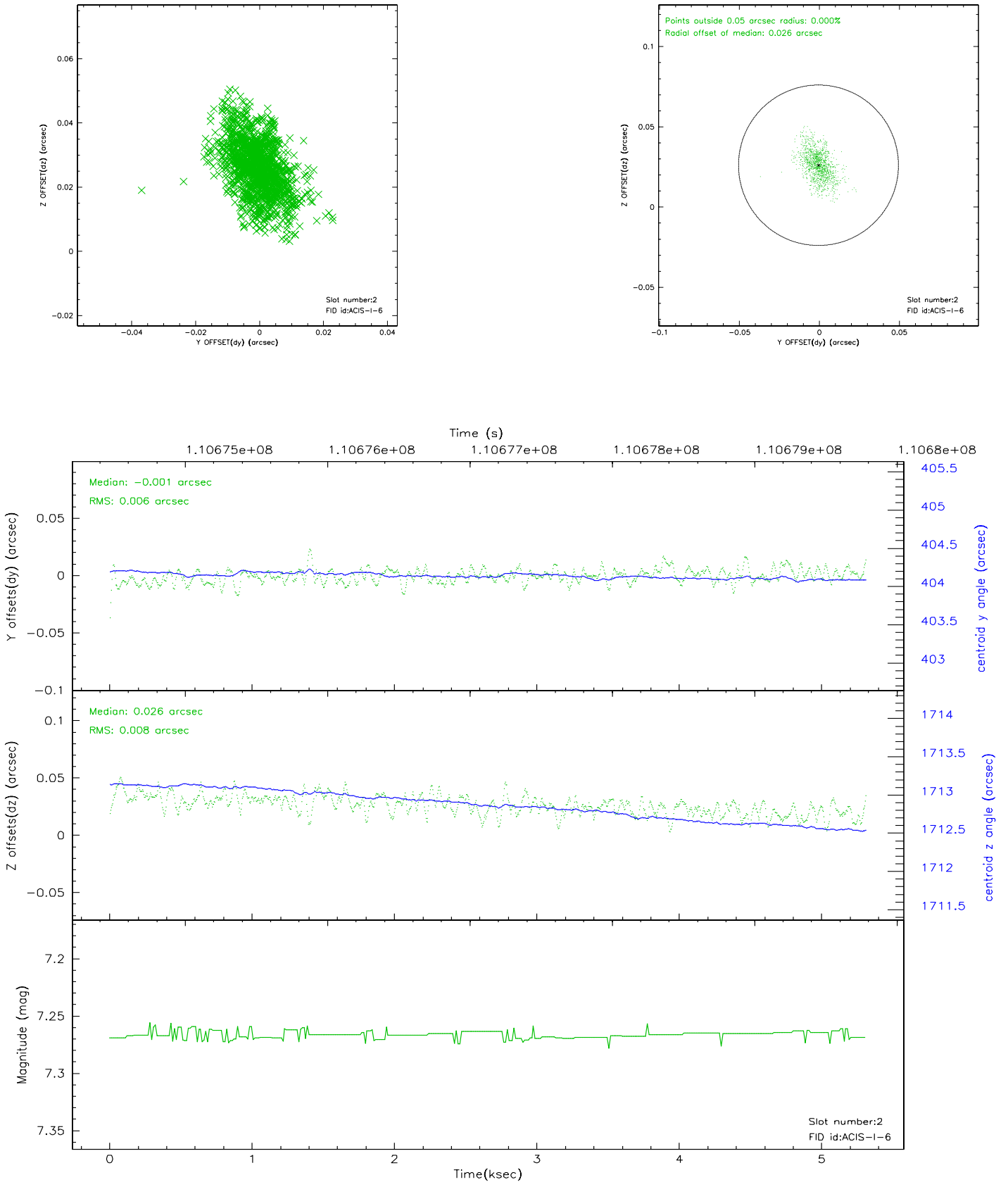
2.5.1 Slot 0



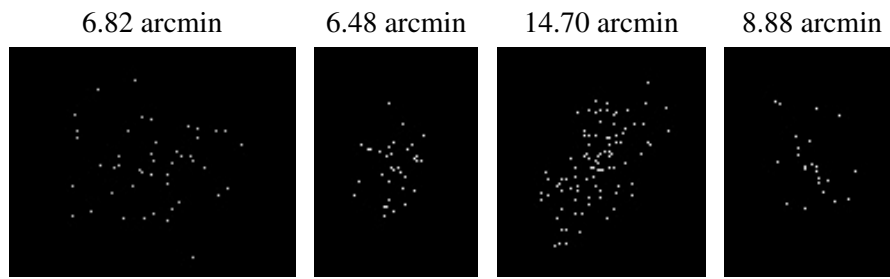
2.5.2 Slot 1



2.5.3 Slot 2



3 Point Sources



A Summary

A.1 Status

V&V Scientist	Beth Sundheim
V&V Date (YYYY-MM-DD)	2006.12.11
V&V Edition	1
V&V Disposition and Status	OK
V&V Charge Time	4.963

A.2 Comments