

# V&V Reference Report

## L2 ASCDS Version : 7.6.9

Observation 2219 - L2 Version 001  
Chandra X-Ray Center

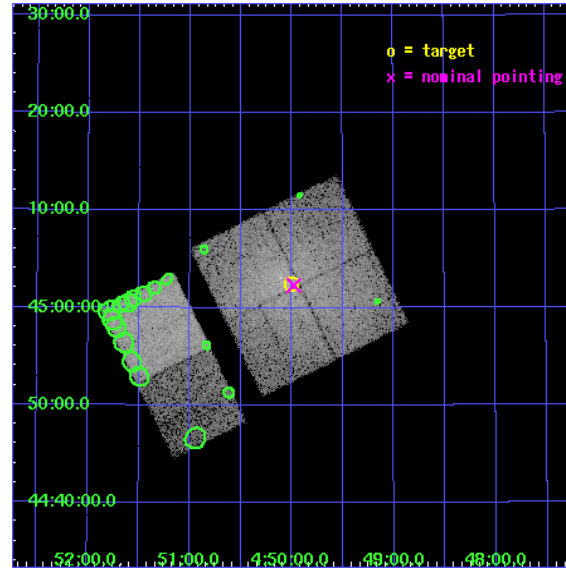
L2 Processing Date : Nov 2 2006

## Contents

<b>1</b>	<b>Front</b>	<b>2</b>
<b>2</b>	<b>OBI</b>	<b>3</b>
2.1	OBI . . . . .	3
2.1.1	Images . . . . .	3
2.1.2	Bias . . . . .	3
2.1.3	Parameters . . . . .	4
2.1.4	Events . . . . .	4
2.2	Compared Parameters . . . . .	5
2.3	Aspect . . . . .	6
2.4	Star Slots . . . . .	9
2.4.1	Slot 3 . . . . .	9
2.4.2	Slot 4 . . . . .	10
2.4.3	Slot 5 . . . . .	11
2.4.4	Slot 6 . . . . .	12
2.4.5	Slot 7 . . . . .	13
2.5	FID Slots . . . . .	14
2.5.1	Slot 0 . . . . .	14
2.5.2	Slot 1 . . . . .	15
2.5.3	Slot 2 . . . . .	16
<b>3</b>	<b>Point Sources</b>	<b>17</b>
<b>A</b>	<b>Summary</b>	<b>18</b>
A.1	Status . . . . .	18
A.2	Comments . . . . .	18

# 1 Front

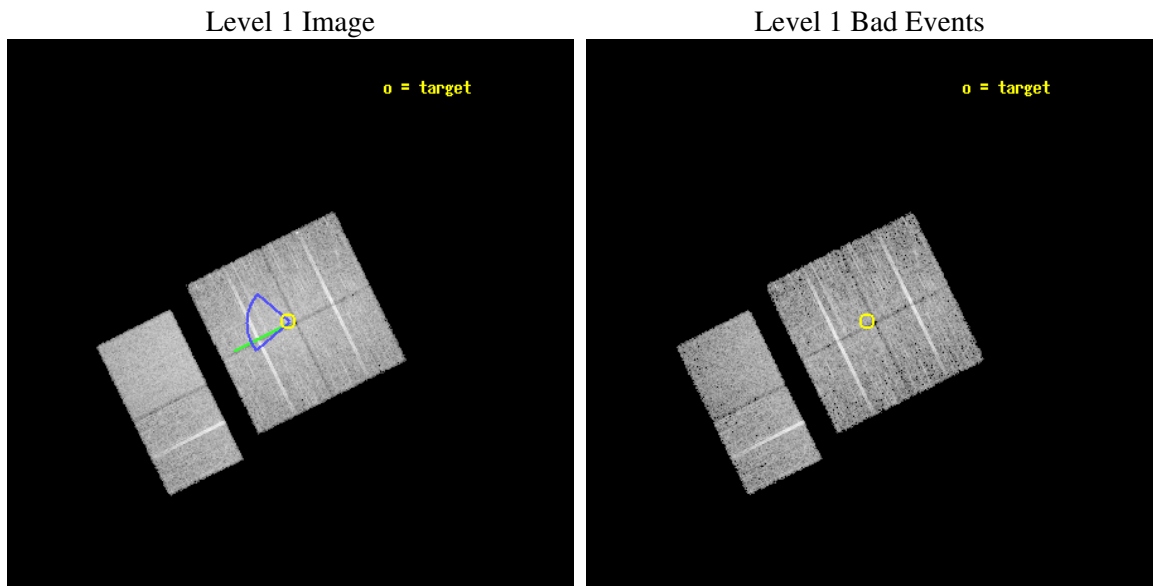
seq_num	800158
obs_id	2219
title	JET-INTRACLUSTER MEDIUM INTERACTIONS OF THE RADIO GALAXY 3C 129
observer	Dr. Daniel Harris
object	3C129.1
dtcycle	0
cycle	P
ra_targ	72.5
dec_targ	45.041667
ra_nom	72.49481396893
dec_nom	45.038535265917
roll_nom	243.71233176723
revision	2
ontime	9753.6000090837
livetime	9630.0940528559
ontime0	9753.6000090837
ontime1	9753.6000090837
ontime2	9750.3591485173
ontime3	9753.6000090837
ontime6	9753.6000090837
ontime7	9753.6000090837
l2events	104270



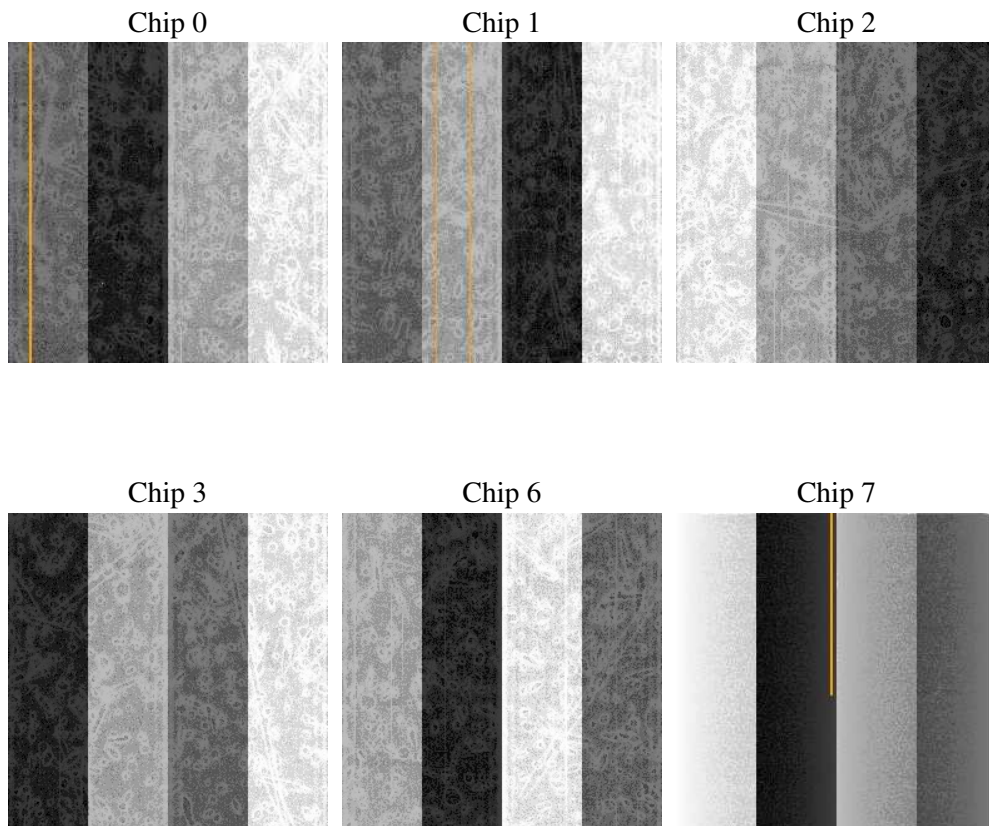
## 2 OBI

### 2.1 OBI

#### 2.1.1 Images



#### 2.1.2 Bias



### 2.1.3 Parameters

obi_num	0
ascdsver	7.6.9
caldbver	3.2.3
date	2006-11-02T15:36:18
revision	2

sched_exp_time	9800.000000
ontime	9758.650184527
ontime0	9758.650184527
ontime1	9758.6502144337
ontime2	9755.4093239605
ontime3	9758.650184527
ontime6	9758.650184527
ontime7	9758.6502144337
l1events	404236

### 2.1.4 Events

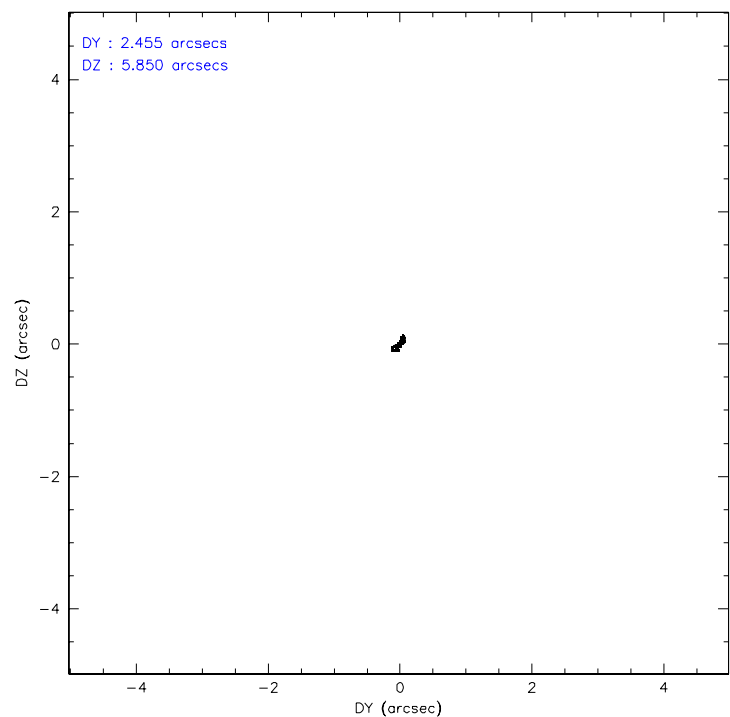
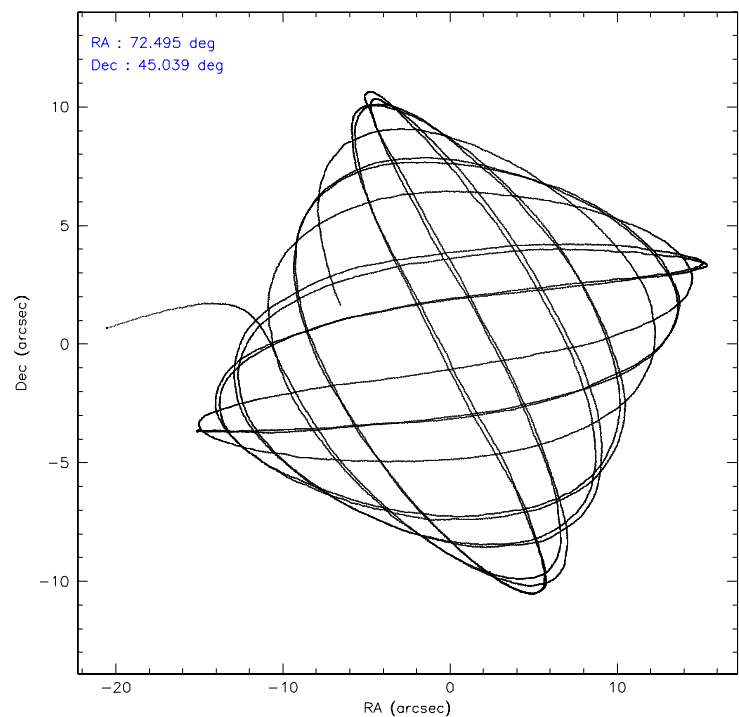
	ccd 0	ccd 1	ccd 2	ccd 3	ccd 6	ccd 7
level 1 events	64568	64568	66888	71140	61303	75769
rejected events	46047	47711	49649	50537	52622	45259
rejected %	71%	73%	74%	71%	85%	59%

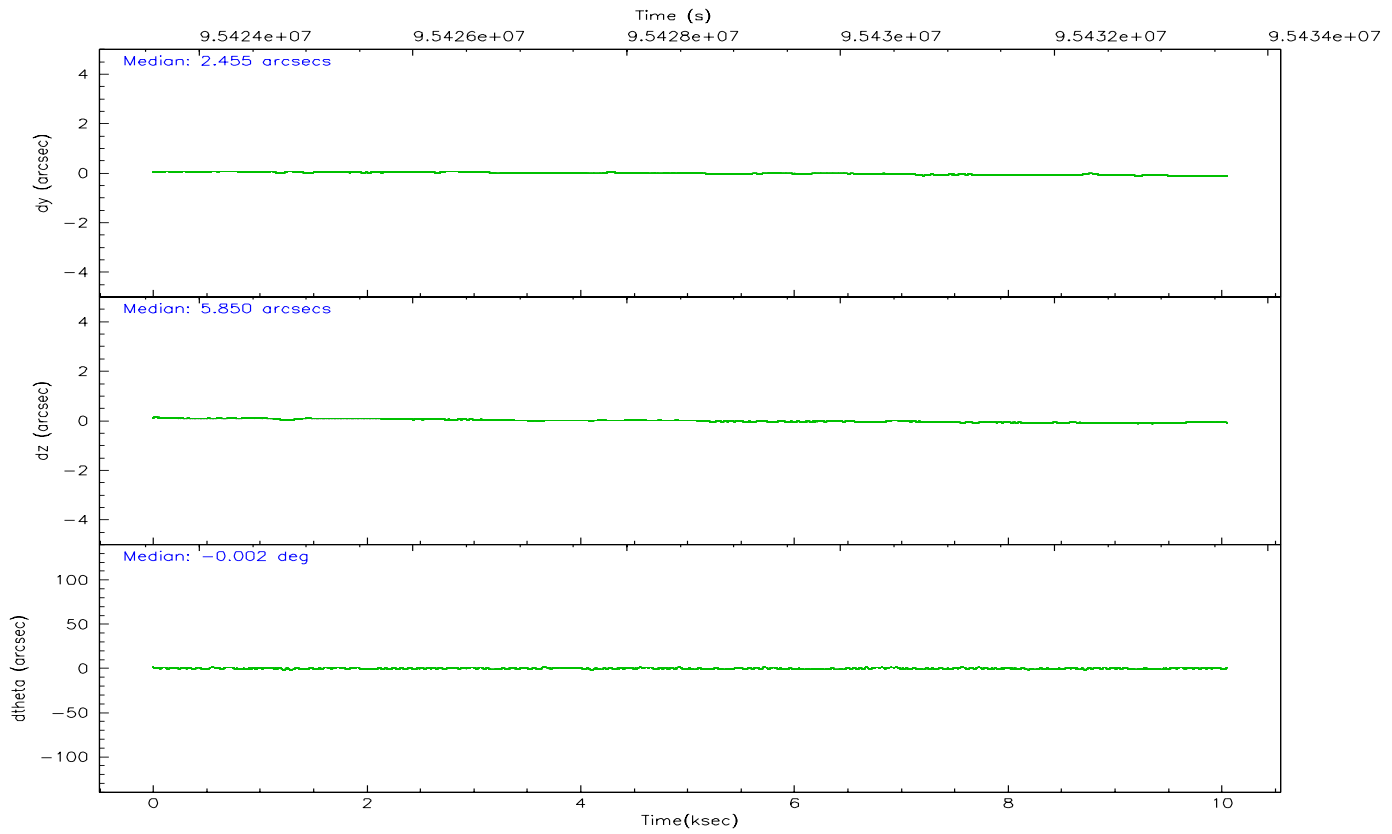
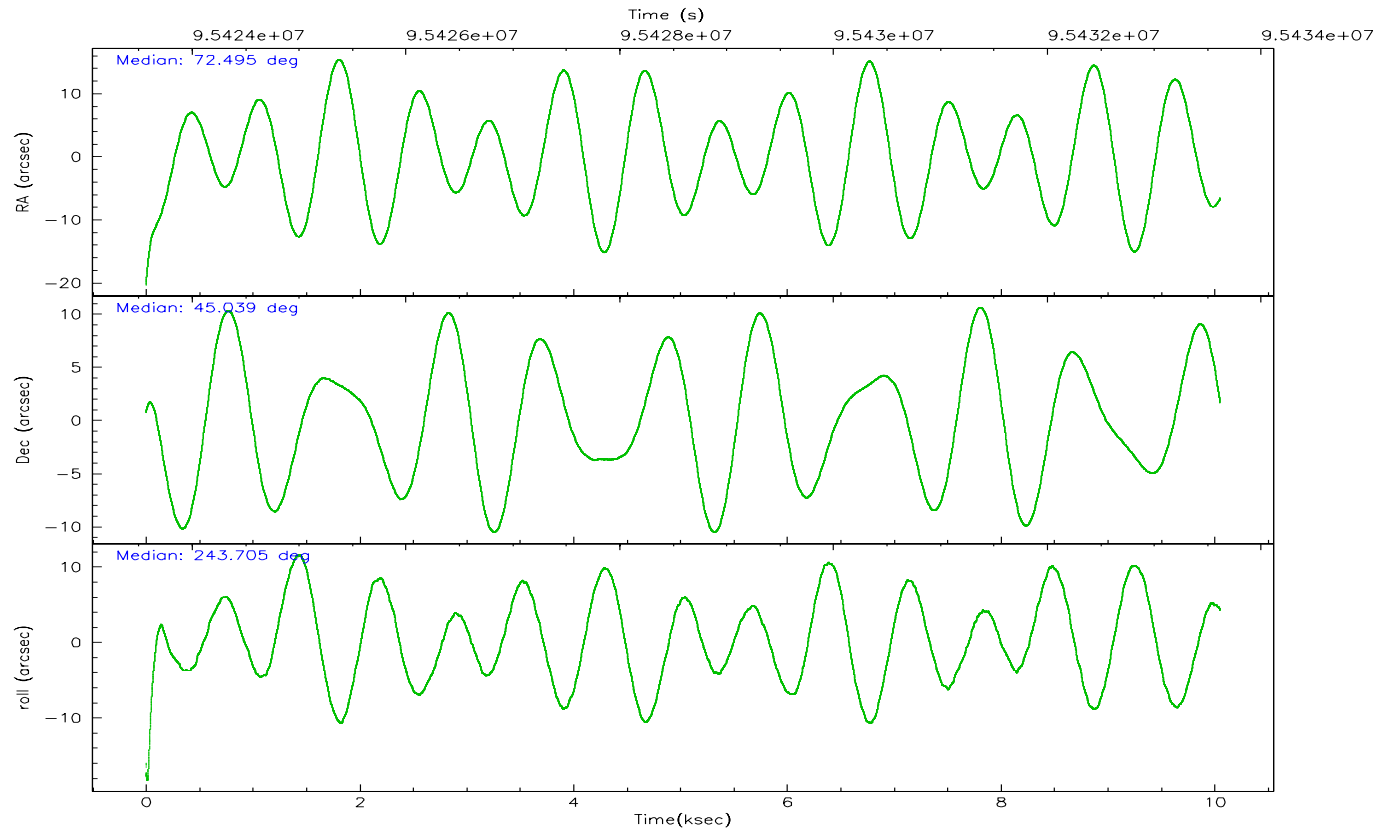
	ccd 0	ccd 1	ccd 2	ccd 3	ccd 6	ccd 7
grade 0 events	11986	10465	11217	13698	4305	2217
	18%	16%	16%	19%	7%	2%
grade 1 events	64	59	62	68	36	38
	0%	0%	0%	0%	0%	0%
grade 2 events	2767	2557	2573	2907	1579	7536
	4%	3%	3%	4%	2%	9%
grade 3 events	1104	1119	992	1122	718	1655
	1%	1%	1%	1%	1%	2%
grade 4 events	1061	1068	970	1181	729	1763
	1%	1%	1%	1%	1%	2%
grade 5 events	2023	2211	2020	2183	2573	4947
	3%	3%	3%	3%	4%	6%
grade 6 events	1612	1651	1492	1704	1354	17349
	2%	2%	2%	2%	2%	22%
grade 7 events	43951	45438	47562	48277	50009	40264
	68%	70%	71%	67%	81%	53%

## 2.2 Compared Parameters

Parameter	Planned	Actual	Parameter	Planned	Actual
Instrument	ACIS	ACIS	Obspar format version number	6	6
Detector	ACIS-012367	ACIS-012367	Obspar file type	PREDICTED	ACTUAL
Grating	NONE	NONE	Obspar update status	NONE	UPDATED
Data mode	FAINT	FAINT	Number of optional ACIS chips dropped	0	0
Observation mode	POINTING	POINTING	On-chip summing requested	N	N
Pointing RA	72.492362	72.49481396893046	Subarray requested	NONE	NONE
Pointing Dec	45.065963	45.03853526591735	Alternating exposures requested	N	N
Pointing Roll	243.505408	243.7123317672254	Primary exposure time	0.000000	3.2
Roll angle	270.000000	270.000000			
Roll tolerance	40.000000	40.000000			
Roll constraint allows 180D rotation	N	N			
SIM focus pos (mm)	-0.782348	-0.7809083437167272			
SIM defocus (mm)	0	0.001439871863259334			
SIM translation stage pos (mm)	-233.592463	-233.5874344608287			
SIM translation stage offset (mm)	0	-0.005018542100998502			
Observation start time	95423817.184000	95422809.316697			
Observation start date	2001-01-09T10:35:53	2001-01-09T10:20:09			
Observation end time	95433617.184000	95434263.179636			
Observation end date	2001-01-09T13:19:13	2001-01-09T13:31:03			
Read mode	TIMED	TIMED			

## 2.3 Aspect





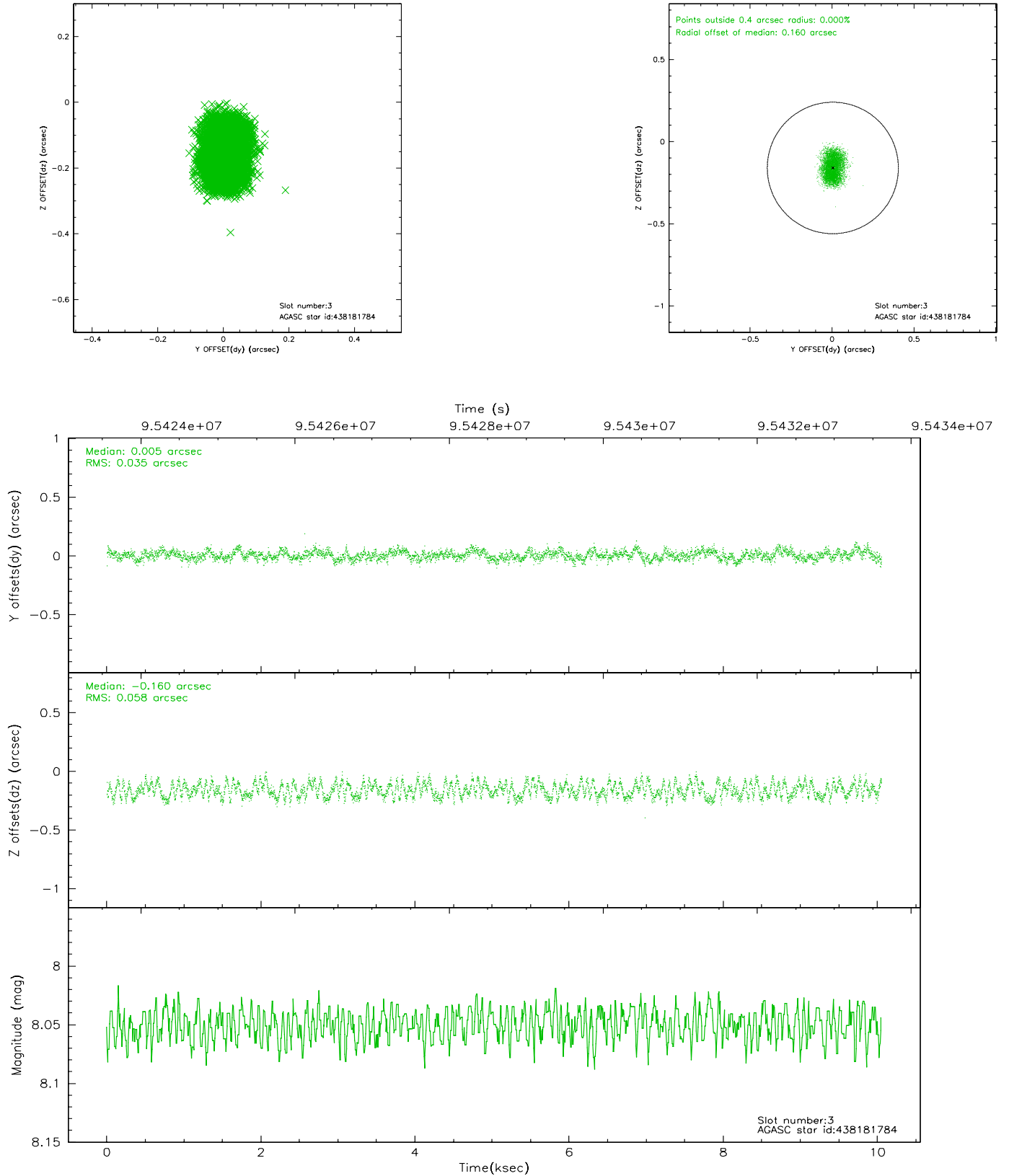
### Slot Statistics

slot	status	id	mag	n_pts	med_dy	med_dz	dr1	dr2	ra	dec	mean_y	mean_z
0	FID	ACIS-I-2	7.16	2452	-0.019	-0.021	0.009	0.015	0.000000	0.000000	-756.83	-835.60
1	FID	ACIS-I-4	7.18	2451	-0.067	0.026	0.006	0.011	0.000000	0.000000	2156.95	1070.35
2	FID	ACIS-I-5	7.23	2451	-0.015	0.064	0.009	0.014	0.000000	0.000000	-1809.97	1068.85
3	GUIDE	438181784	8.05	4904	0.005	-0.160	0.074	0.112	71.972233	45.489356	-781.28	-1856.74
4	GUIDE	380903832	8.74	4903	0.042	-0.013	0.063	0.100	72.555284	44.802199	778.69	567.30
5	GUIDE	438174168	9.07	4905	-0.015	0.027	0.073	0.120	71.685812	45.177000	547.41	-2014.30
6	GUIDE	380897112	8.95	4905	-0.041	0.106	0.061	0.099	73.055571	44.974202	-348.04	1428.56
7	GUIDE	438176744	9.48	4901	0.011	0.044	0.084	0.138	72.786347	45.702571	-2381.26	-361.25

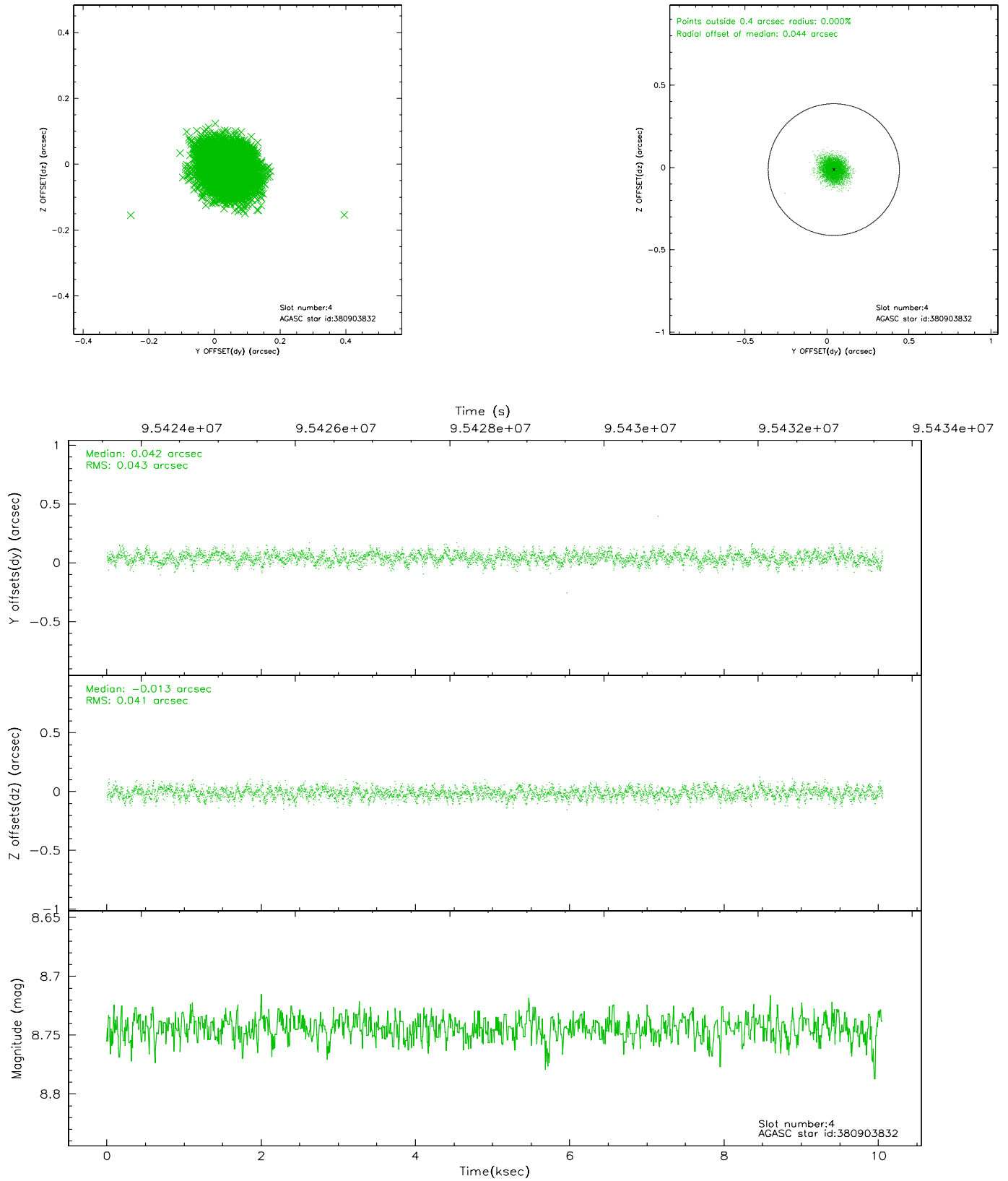


## 2.4 Star Slots

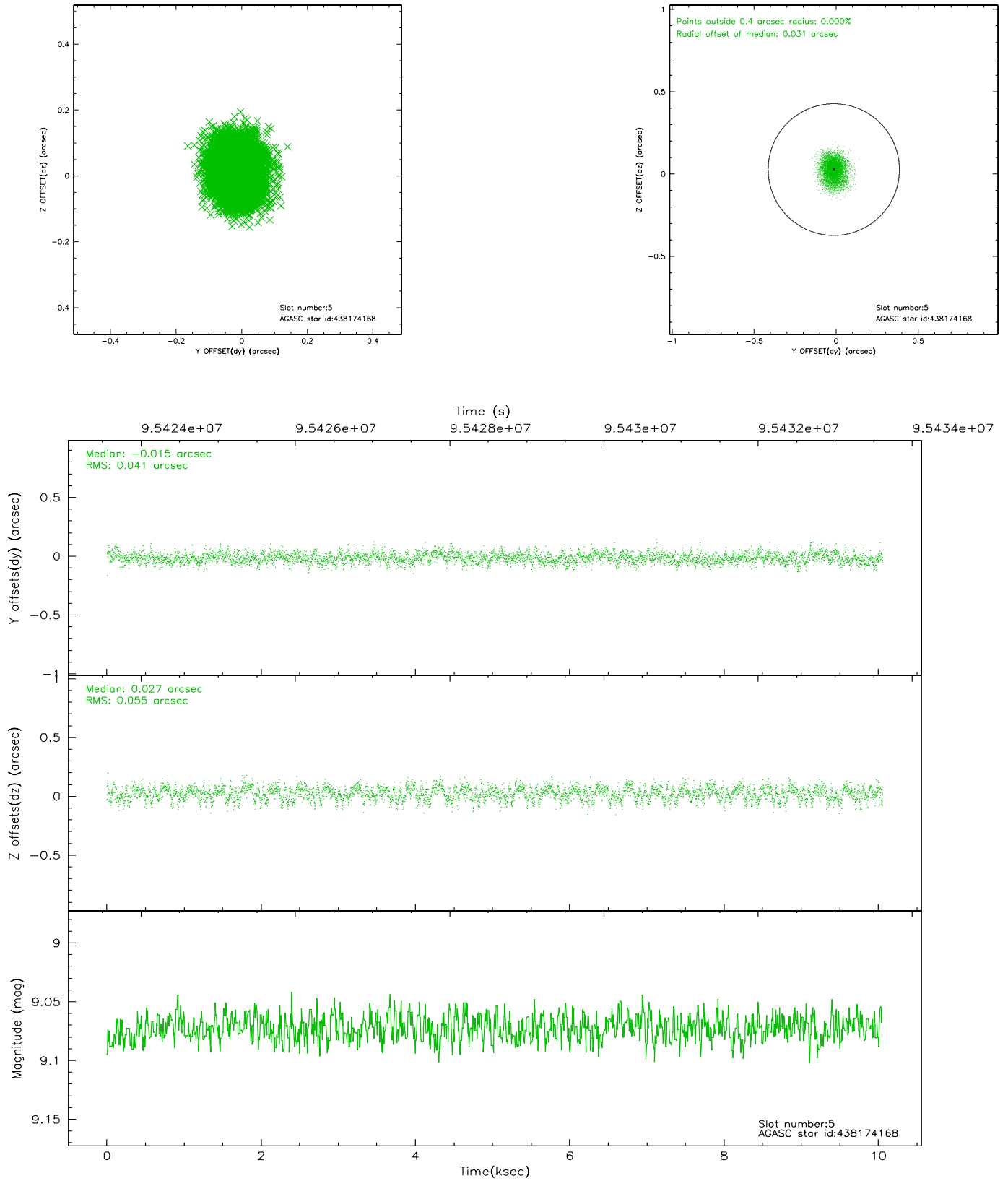
### 2.4.1 Slot 3



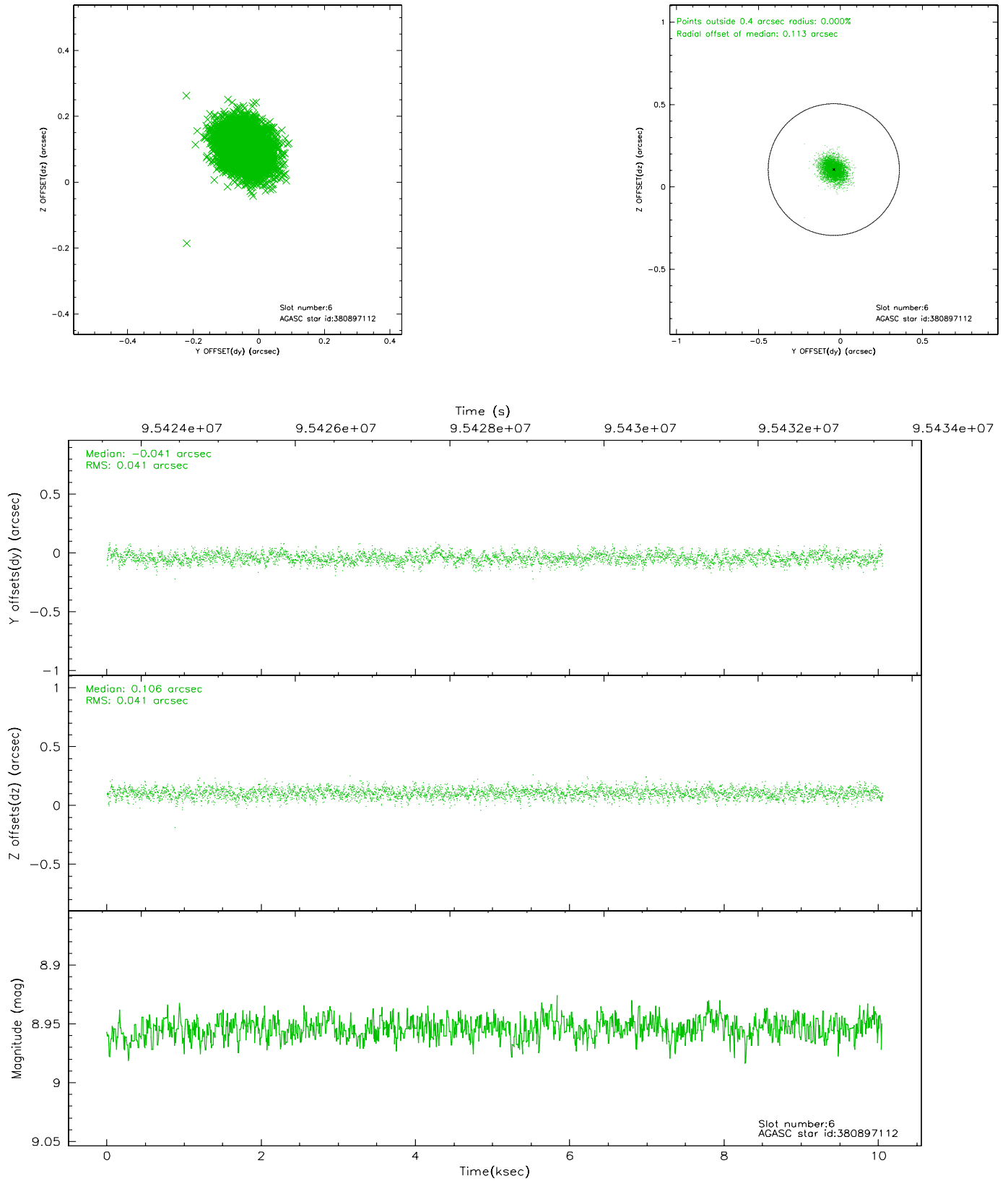
## 2.4.2 Slot 4



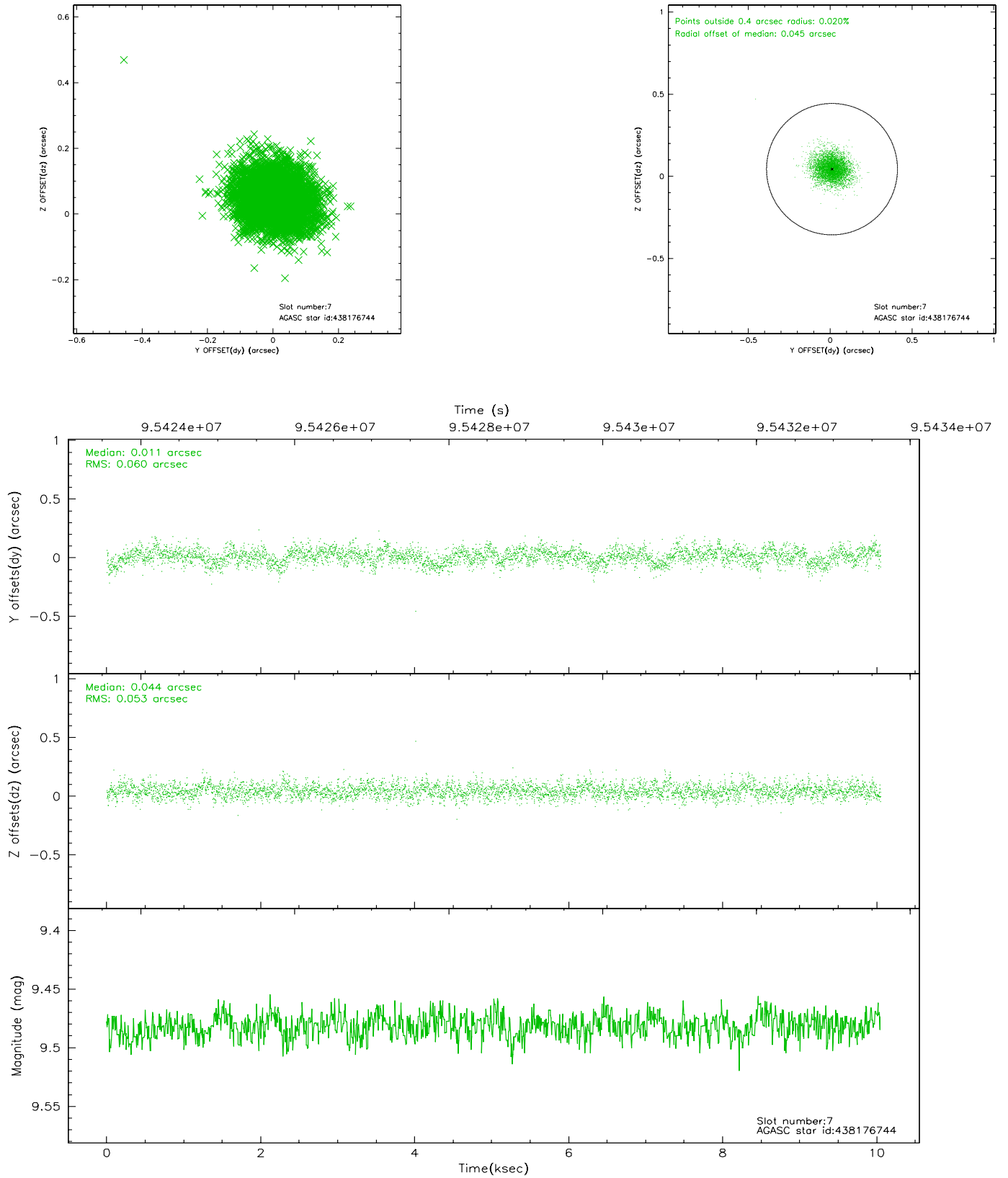
### 2.4.3 Slot 5



## 2.4.4 Slot 6

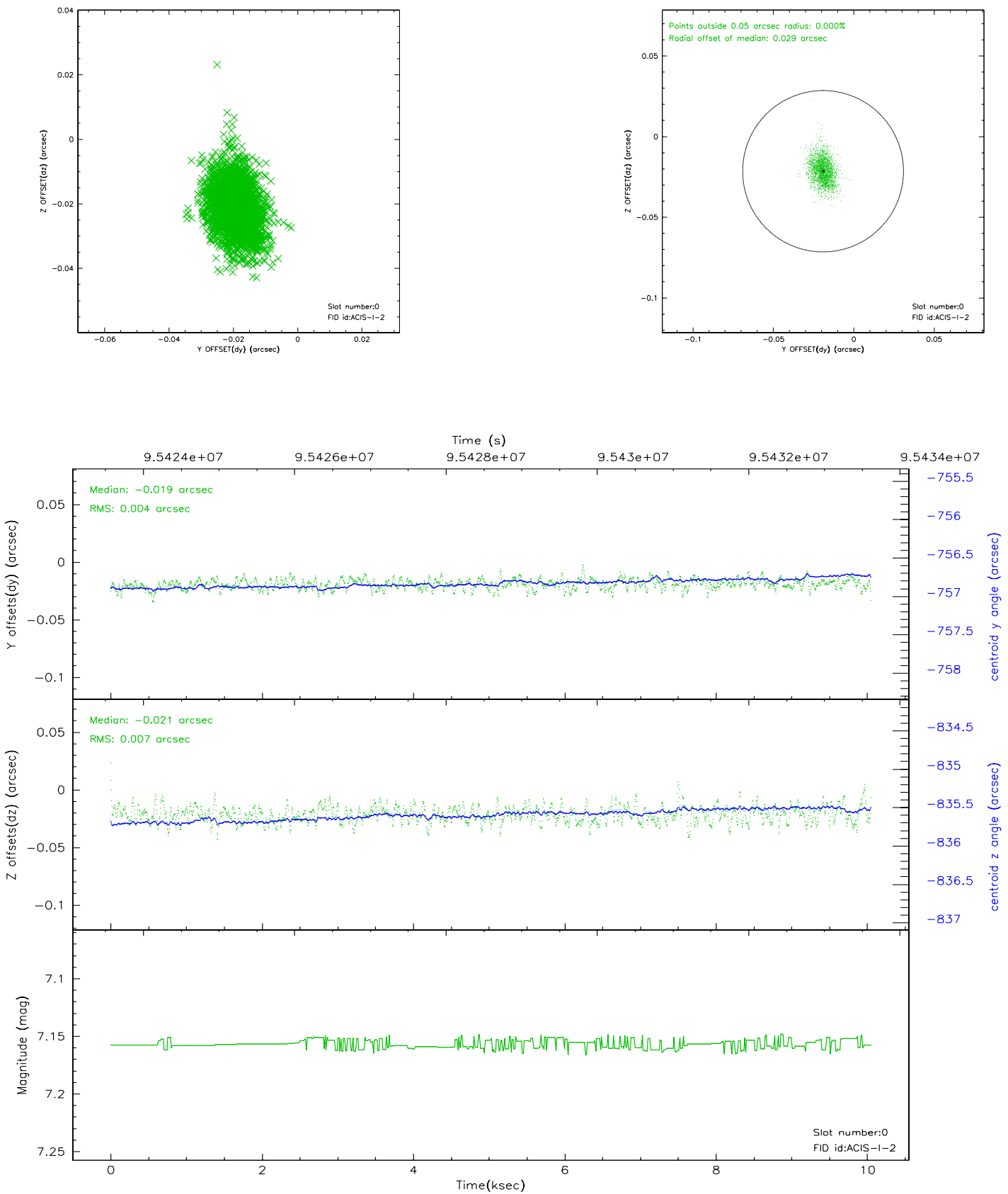


## 2.4.5 Slot 7

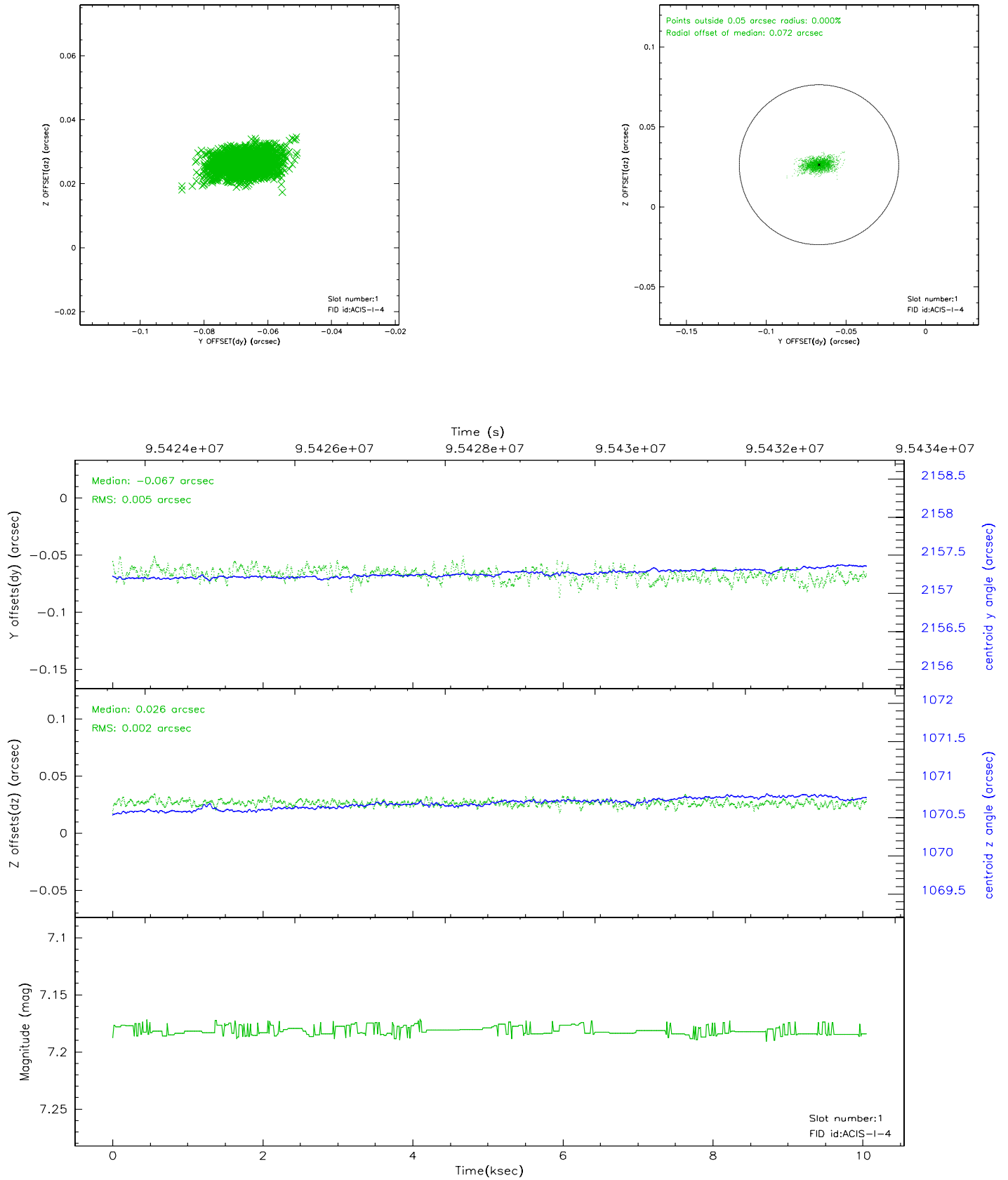


## 2.5 FID Slots

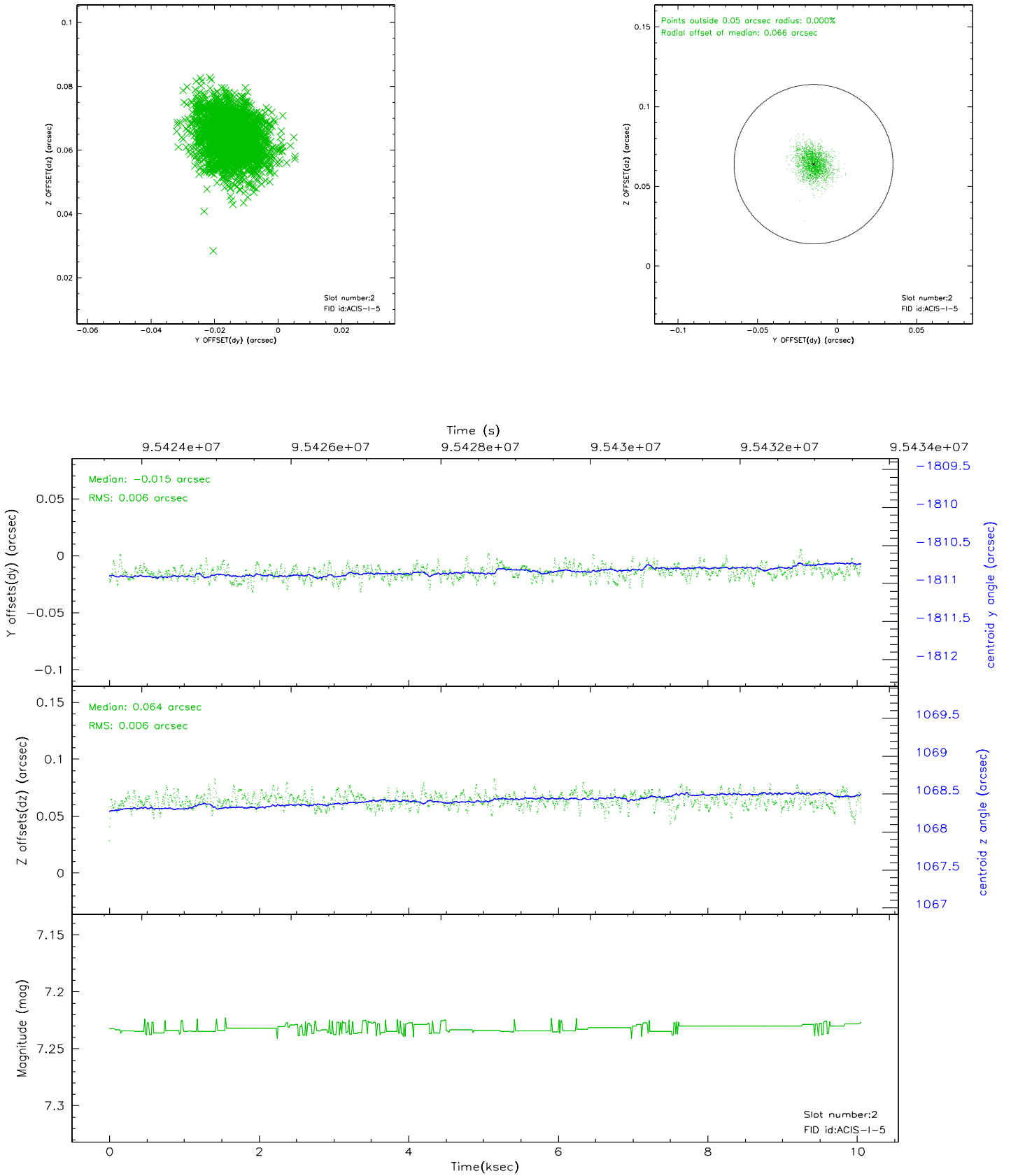
### 2.5.1 Slot 0



## 2.5.2 Slot 1

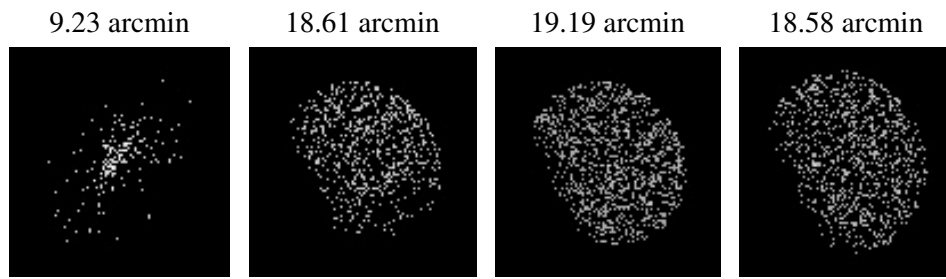


### 2.5.3 Slot 2





### 3 Point Sources



## A Summary

### A.1 Status

V&V Scientist	Jen Lauer
V&V Date (YYYY-MM-DD)	2006.11.02
V&V Edition	1
V&V Disposition and Status	OK
V&V Charge Time	9.753

### A.2 Comments

Roll constraint met.