

# V&V Reference Report

## L2 ASCDS Version : 7.6.9

Observation 2216 - L2 Version 001  
Chandra X-Ray Center

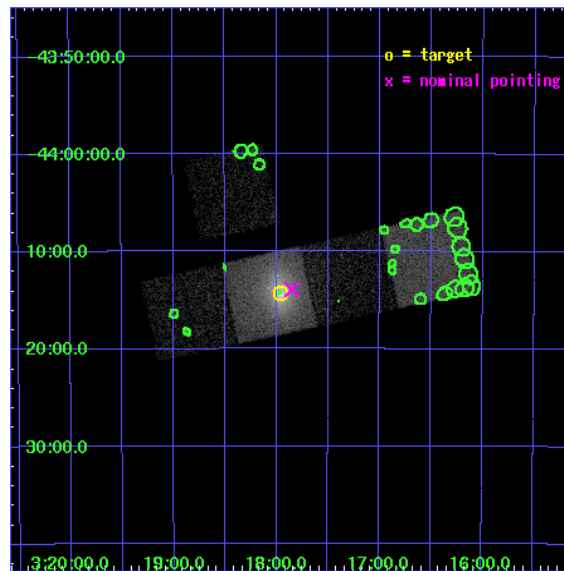
L2 Processing Date : Nov 23 2006

## Contents

<b>1</b>	<b>Front</b>	<b>2</b>
<b>2</b>	<b>OBI</b>	<b>3</b>
2.1	OBI . . . . .	3
2.1.1	Images . . . . .	3
2.1.2	Bias . . . . .	3
2.1.3	Parameters . . . . .	4
2.1.4	Events . . . . .	4
2.2	Compared Parameters . . . . .	5
2.3	Aspect . . . . .	6
2.4	Star Slots . . . . .	9
2.4.1	Slot 3 . . . . .	9
2.4.2	Slot 4 . . . . .	10
2.4.3	Slot 5 . . . . .	11
2.4.4	Slot 6 . . . . .	12
2.4.5	Slot 7 . . . . .	13
2.5	FID Slots . . . . .	14
2.5.1	Slot 0 . . . . .	14
2.5.2	Slot 1 . . . . .	15
2.5.3	Slot 2 . . . . .	16
<b>3</b>	<b>Point Sources</b>	<b>17</b>
<b>A</b>	<b>Summary</b>	<b>18</b>
A.1	Status . . . . .	18
A.2	Comments . . . . .	18

# 1 Front

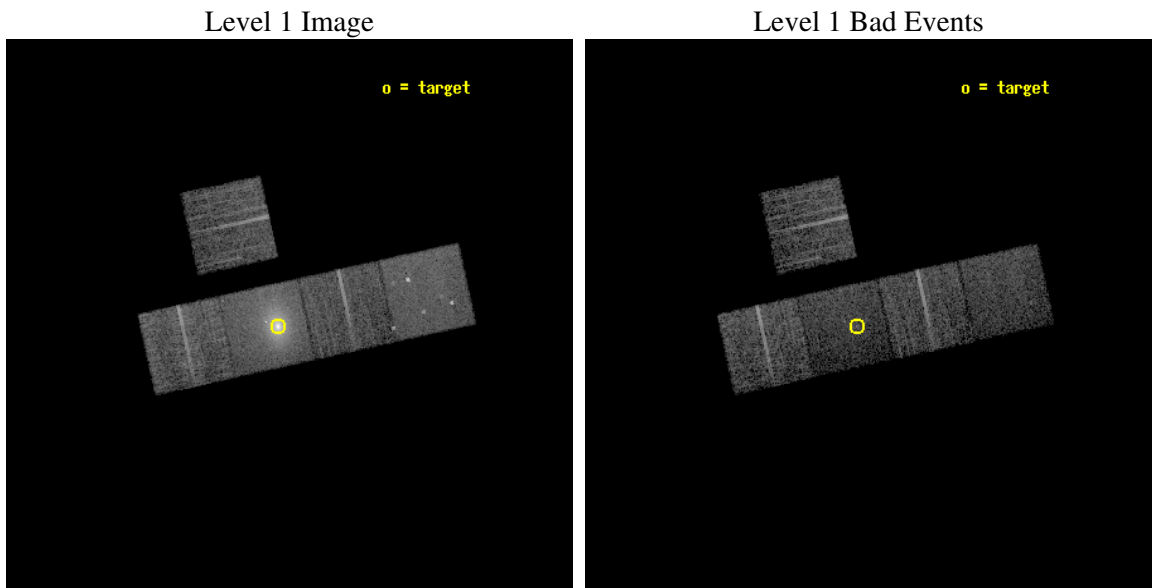
seq_num	800155
obs_id	2216
title	THE INTERACTION BETWEEN CLUSTER CENTRAL RADIO SOURCES AND COOLING FLOWS
observer	Dr. Craig Sarazin
object	A3112
dtcycle	0
cycle	P
ra_targ	49.490417
dec_targ	-44.238194
ra_nom	49.462529805626
dec_nom	-44.231924984635
roll_nom	167.58551692984
revision	2
ontime	7349.7313536406
livetime	7253.7017027117
ontime3	7377.9999858141
ontime5	7377.9999858141
ontime6	7374.8590255678
ontime7	7349.7313536406
ontime8	7374.8590255827
l2events	104040



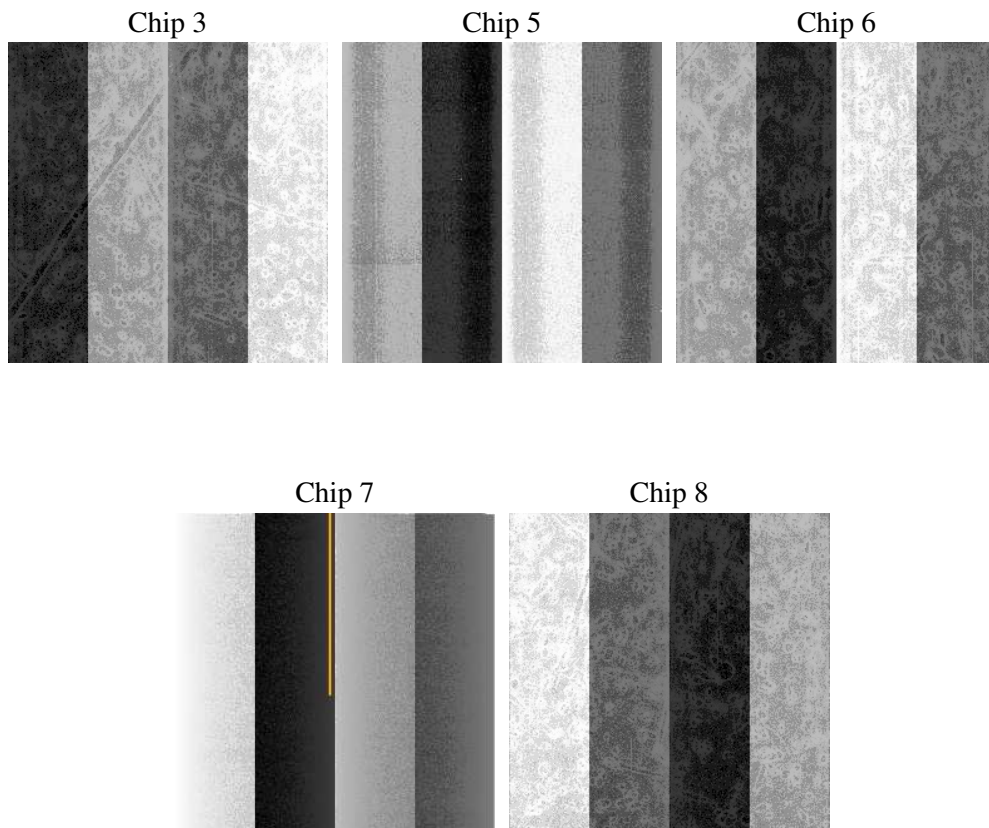
## 2 OBI

### 2.1 OBI

#### 2.1.1 Images



#### 2.1.2 Bias



### 2.1.3 Parameters

obi_num	0
ascdsver	7.6.9
caldsver	3.2.4
date	2006-11-23T04:32:33
revision	2

sched_exp_time	7274.949000
ontime	7356.2190454602
ontime3	7384.4876776338
ontime5	7384.4876776338
ontime6	7381.3467173874
ontime7	7356.2190454602
ontime8	7381.3467174023
l1events	280201

### 2.1.4 Events

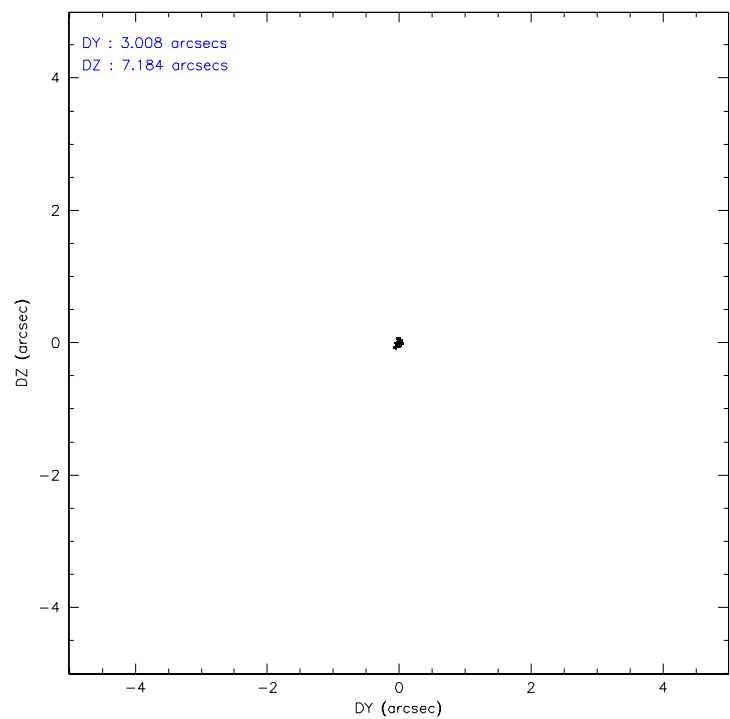
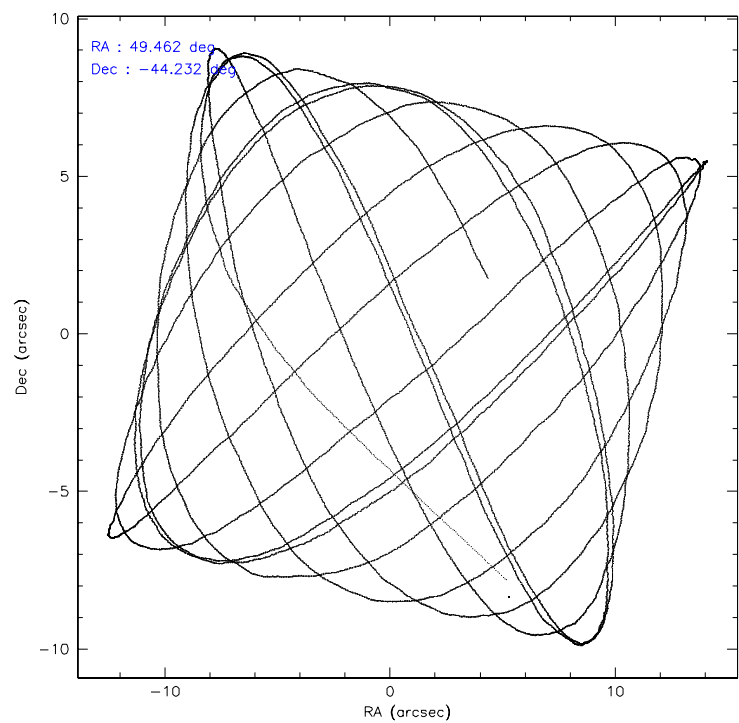
	<b>ccd 3</b>	<b>ccd 5</b>	<b>ccd 6</b>	<b>ccd 7</b>	<b>ccd 8</b>
level 1 events	42248	53491	41577	92862	50023
rejected events	38280	26521	35994	24446	38613
rejected %	90%	49%	86%	26%	77%

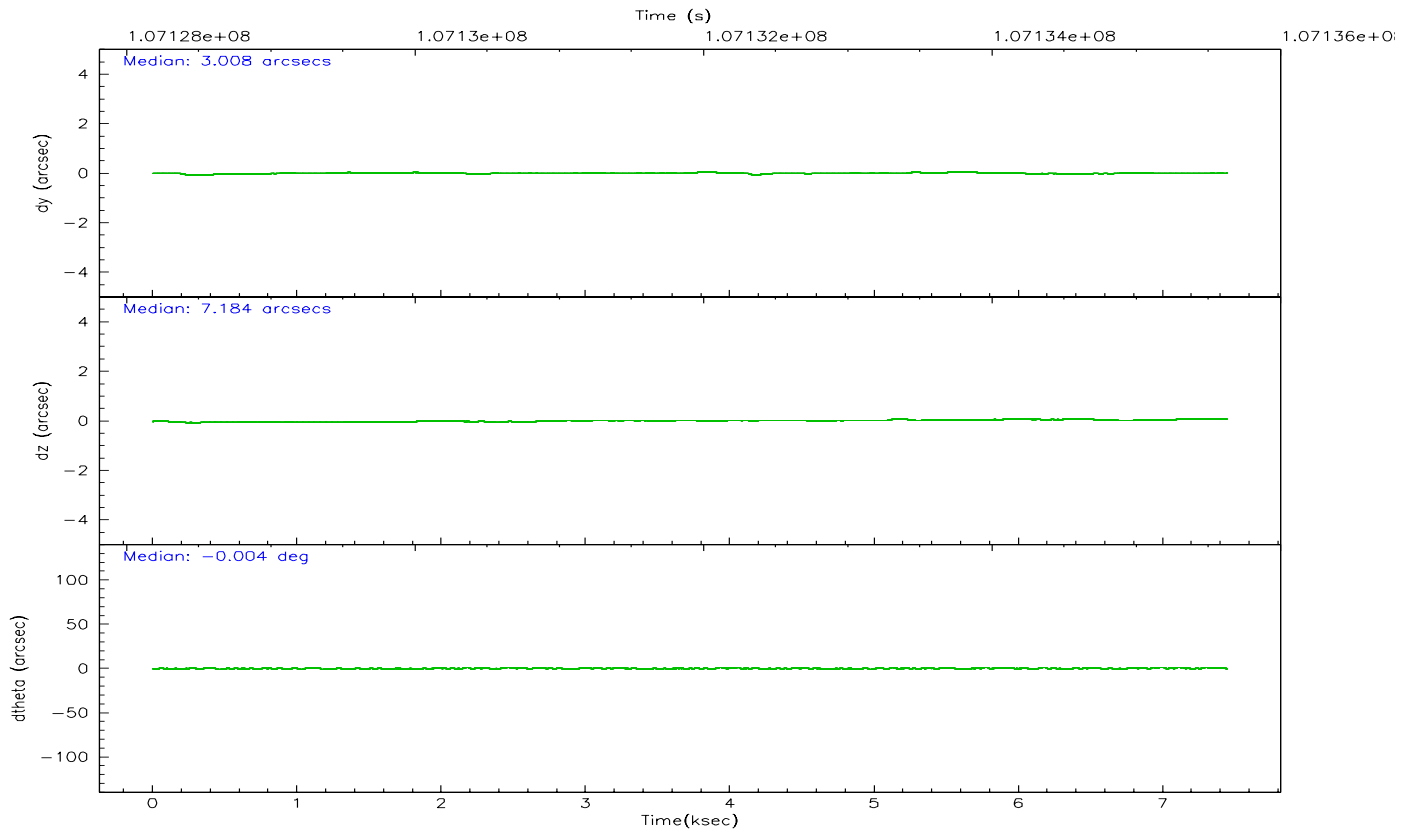
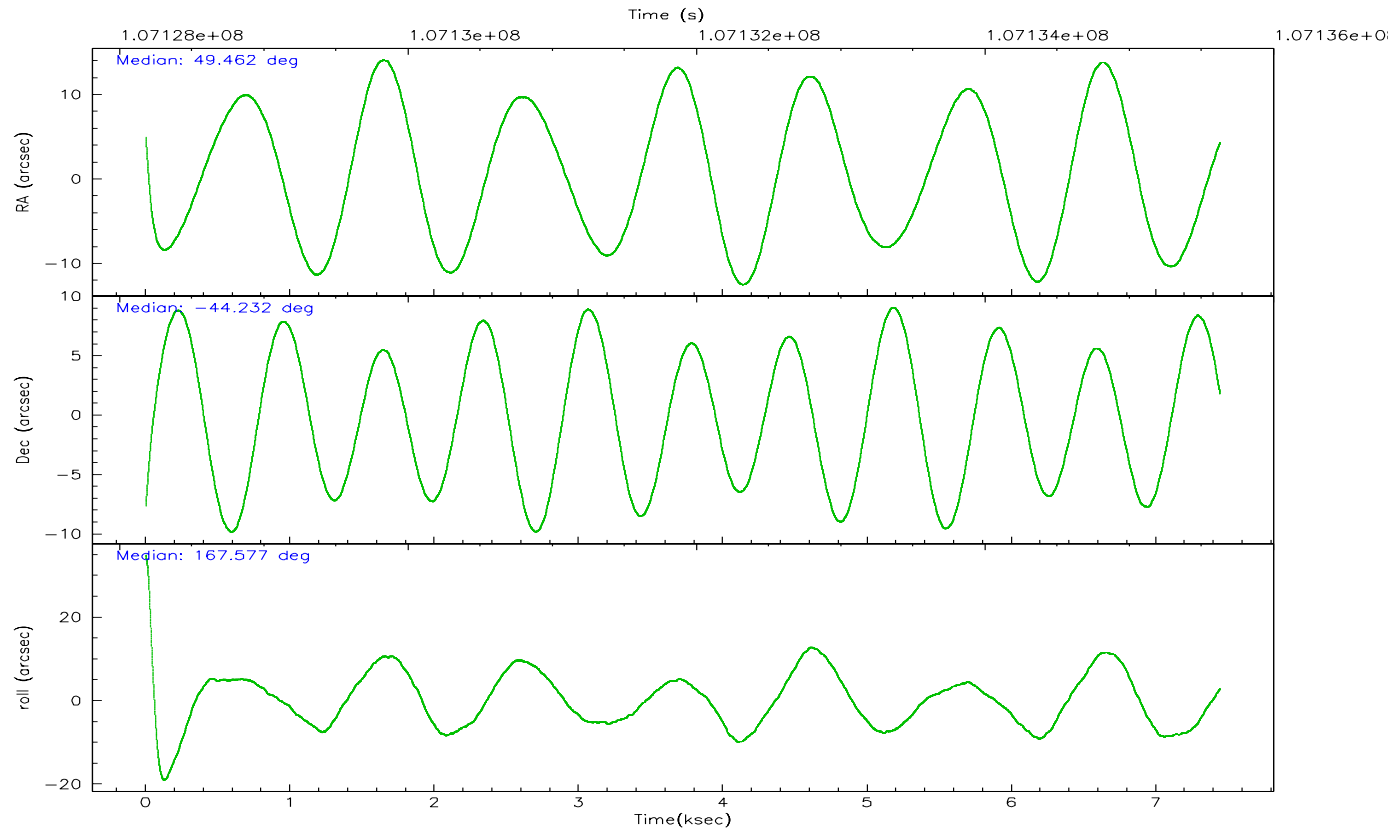
	<b>ccd 3</b>	<b>ccd 5</b>	<b>ccd 6</b>	<b>ccd 7</b>	<b>ccd 8</b>
grade 0 events	1601	3710	2760	17227	3673
	3%	6%	6%	18%	7%
grade 1 events	19	109	21	60	15
	0%	0%	0%	0%	0%
grade 2 events	766	7886	946	18073	2480
	1%	14%	2%	19%	4%
grade 3 events	423	809	477	6688	1296
	1%	1%	1%	7%	2%
grade 4 events	414	801	553	6546	1151
	0%	1%	1%	7%	2%
grade 5 events	1370	2781	1450	3669	1973
	3%	5%	3%	3%	3%
grade 6 events	767	13782	856	19945	2813
	1%	25%	2%	21%	5%
grade 7 events	36888	23613	34514	20654	36622
	87%	44%	83%	22%	73%

## 2.2 Compared Parameters

Parameter	Planned	Actual	Parameter	Planned	Actual
Instrument	ACIS	ACIS	Obspar format version number	6	6
Detector	ACIS-35678	ACIS-35678	Obspar file type	PREDICTED	ACTUAL
Grating	NONE	NONE	Obspar update status	NONE	UPDATED
Data mode	VFAINT	VFAINT	Number of optional ACIS chips dropped	0	0
Observation mode	POINTING	POINTING	On-chip summing requested	N	N
Pointing RA	49.498803	49.462529805626	Subarray requested	NONE	NONE
Pointing Dec	-44.223476	-44.23192498463541	Alternating exposures requested	N	N
Pointing Roll	167.454111	167.5855169298388	Primary exposure time	0.000000	3.1
SIM focus pos (mm)	-0.684267	-0.6828225247311905			
SIM defocus (mm)	0	0.001444936568705701			
SIM translation stage pos (mm)	-190.132523	-190.1400660498719			
SIM translation stage offset (mm)	0	0.00754346686406393			
Observation start time	107128358.184000	107127277.59422			
Observation start date	2001-05-24T21:51:34	2001-05-24T21:34:37			
Observation end time	107135633.184000	107135947.55705			
Observation end date	2001-05-24T23:52:49	2001-05-24T23:59:07			
Read mode	TIMED	TIMED			

## 2.3 Aspect



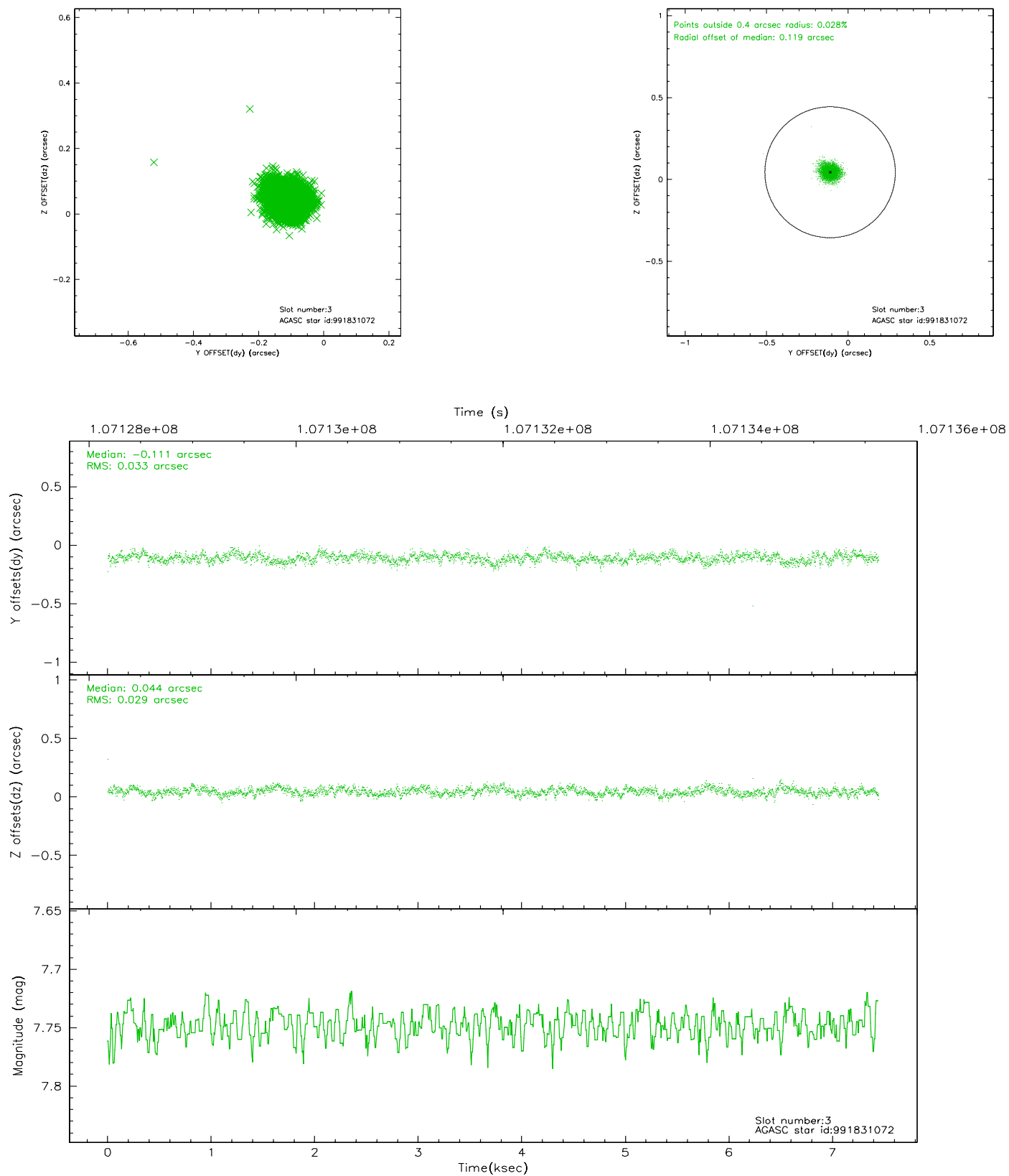


### Slot Statistics

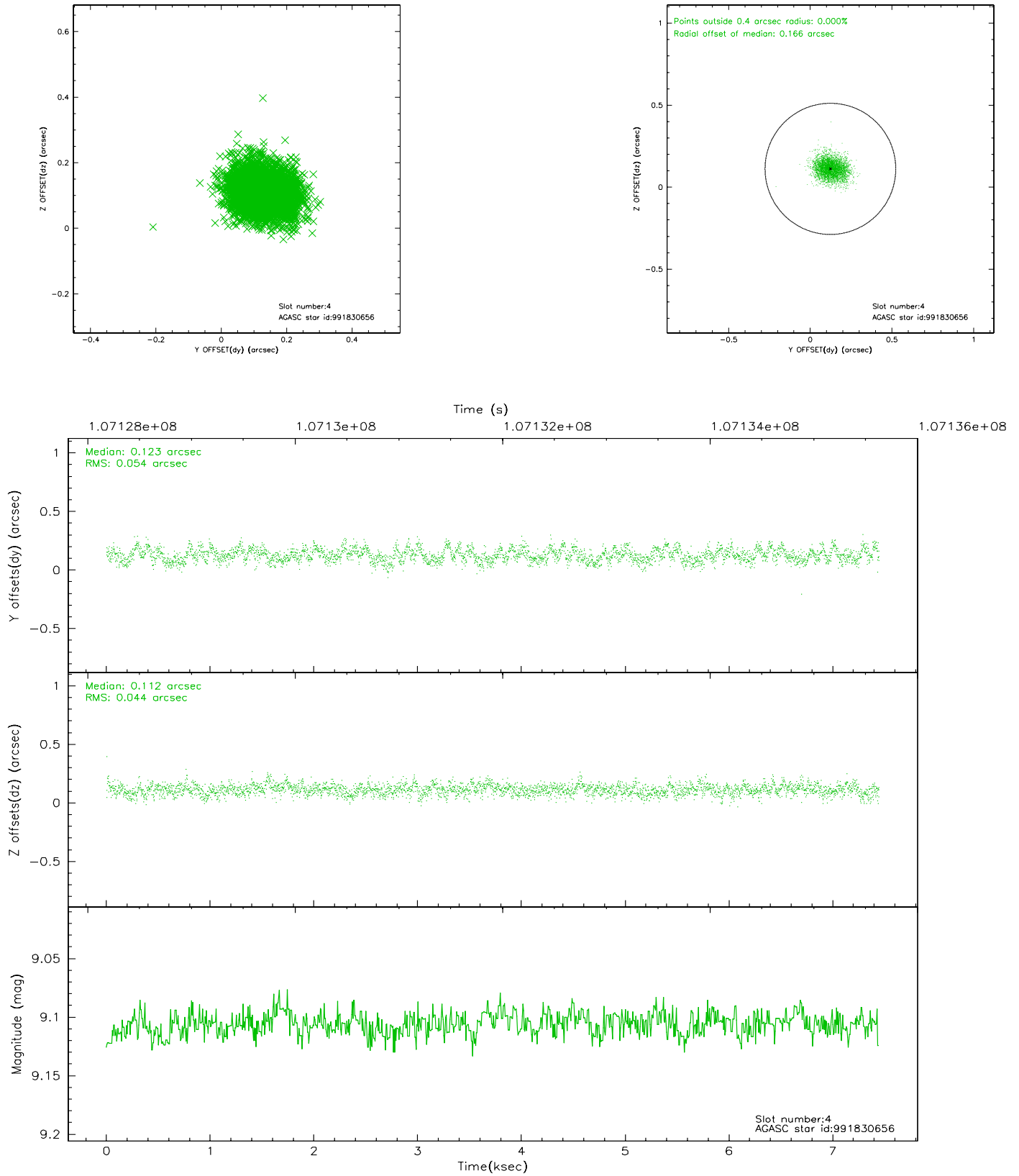
slot	status	id	mag	n_pts	med_dy	med_dz	dr1	dr2	ra	dec	mean_y	mean_z
0	FID	ACIS-S-2	7.11	1814	0.014	0.036	0.006	0.011	0.000000	0.000000	-755.64	-1728.32
1	FID	ACIS-S-4	7.19	1808	-0.108	-0.017	0.005	0.009	0.000000	0.000000	2157.17	179.31
2	FID	ACIS-S-5	7.24	1811	0.063	-0.010	0.006	0.010	0.000000	0.000000	-1807.44	173.87
3	GUIDE	991831072	7.75	3626	-0.111	0.044	0.046	0.075	48.737752	-44.120462	1997.46	74.39
4	GUIDE	991830656	9.11	3631	0.123	0.112	0.075	0.119	49.908080	-44.245128	-1047.88	-150.67
5	GUIDE	991830952	9.39	3564	-0.039	-0.039	0.080	0.128	49.257291	-44.425398	446.63	845.40
6	GUIDE	991825280	10.14	3621	0.056	-0.132	0.130	0.208	49.472332	-44.701981	-308.90	1696.25
7	GUIDE	991828952	10.11	3629	-0.030	0.016	0.111	0.184	49.103151	-44.358377	887.01	698.22

## 2.4 Star Slots

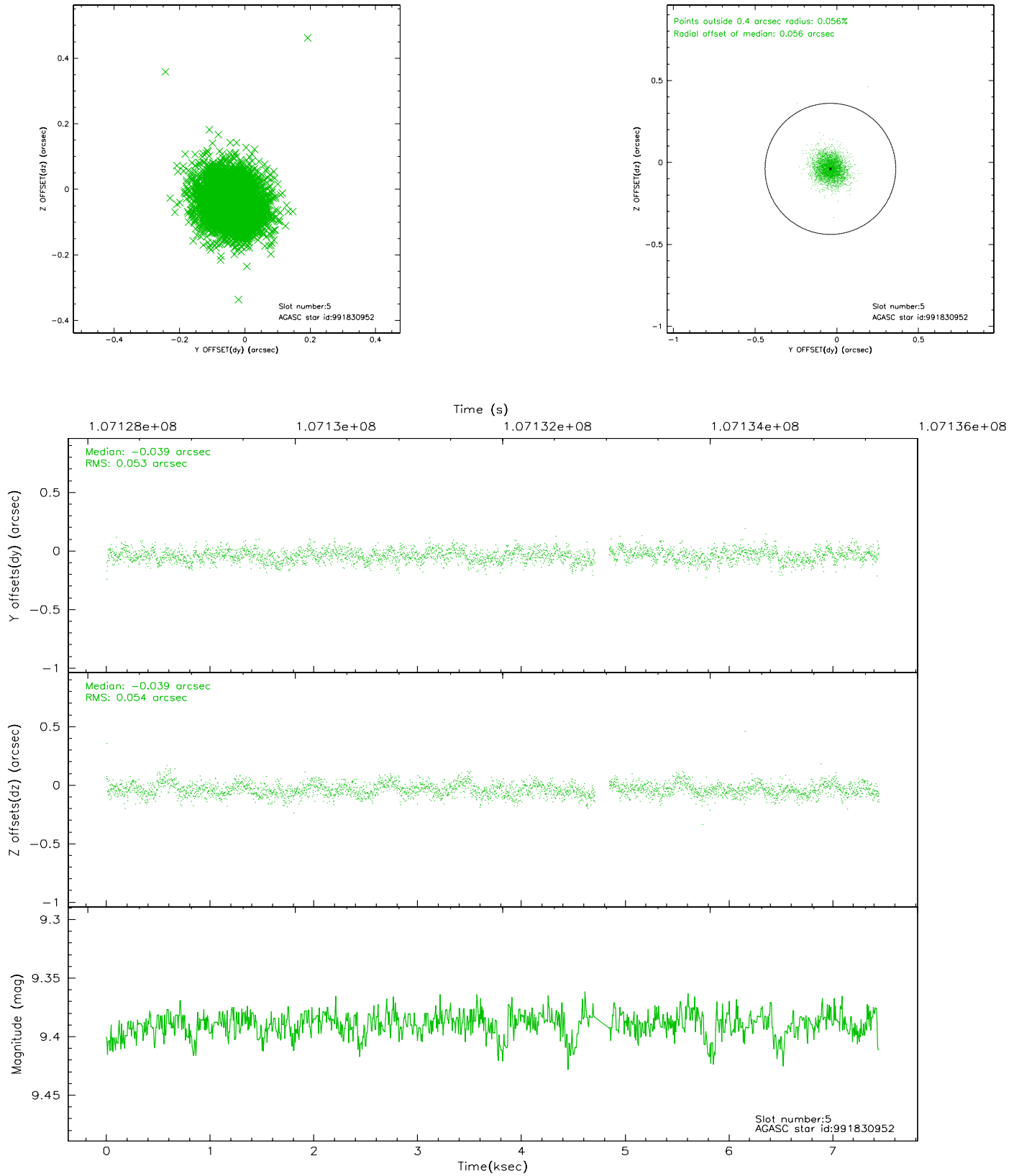
### 2.4.1 Slot 3



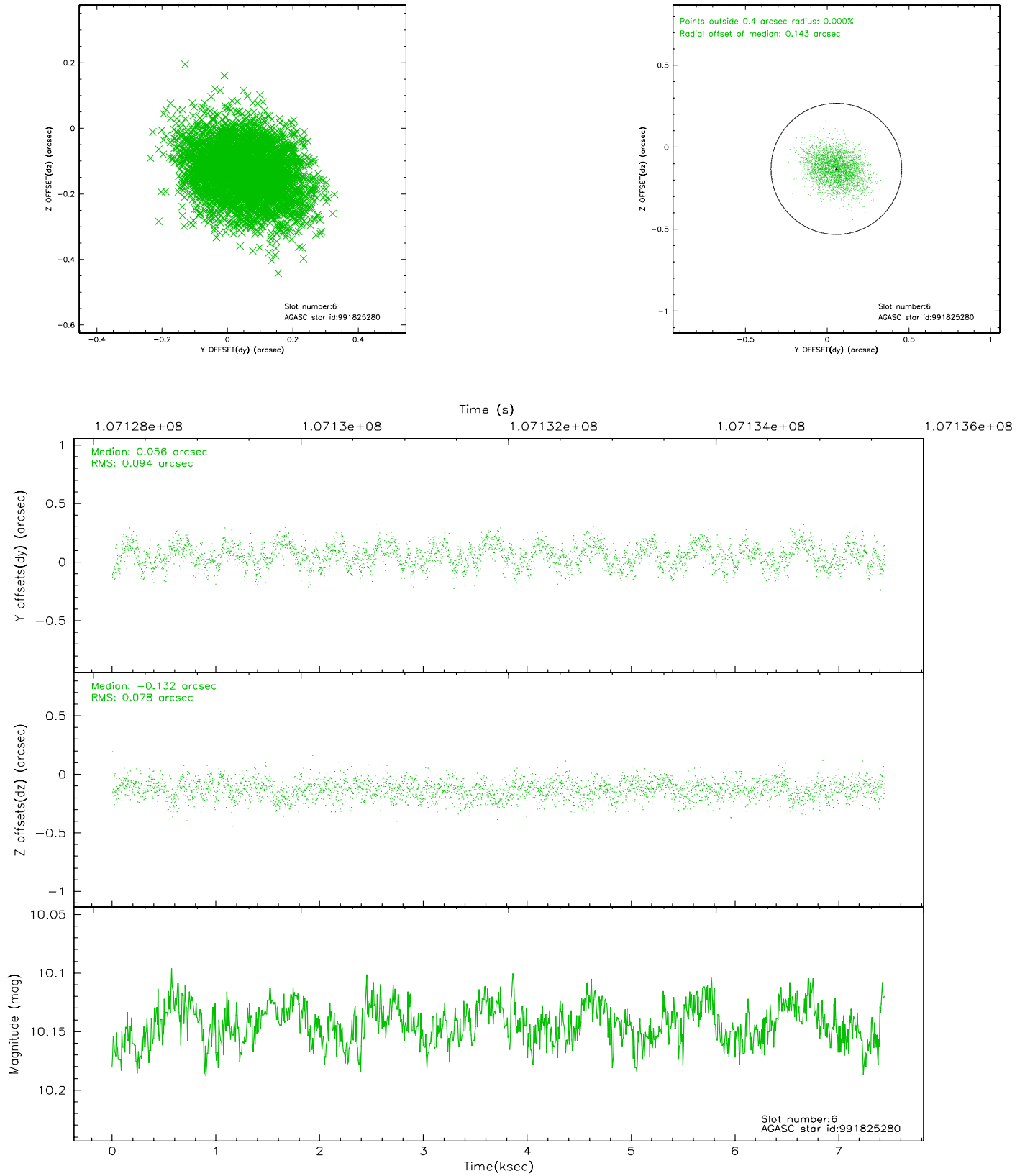
## 2.4.2 Slot 4



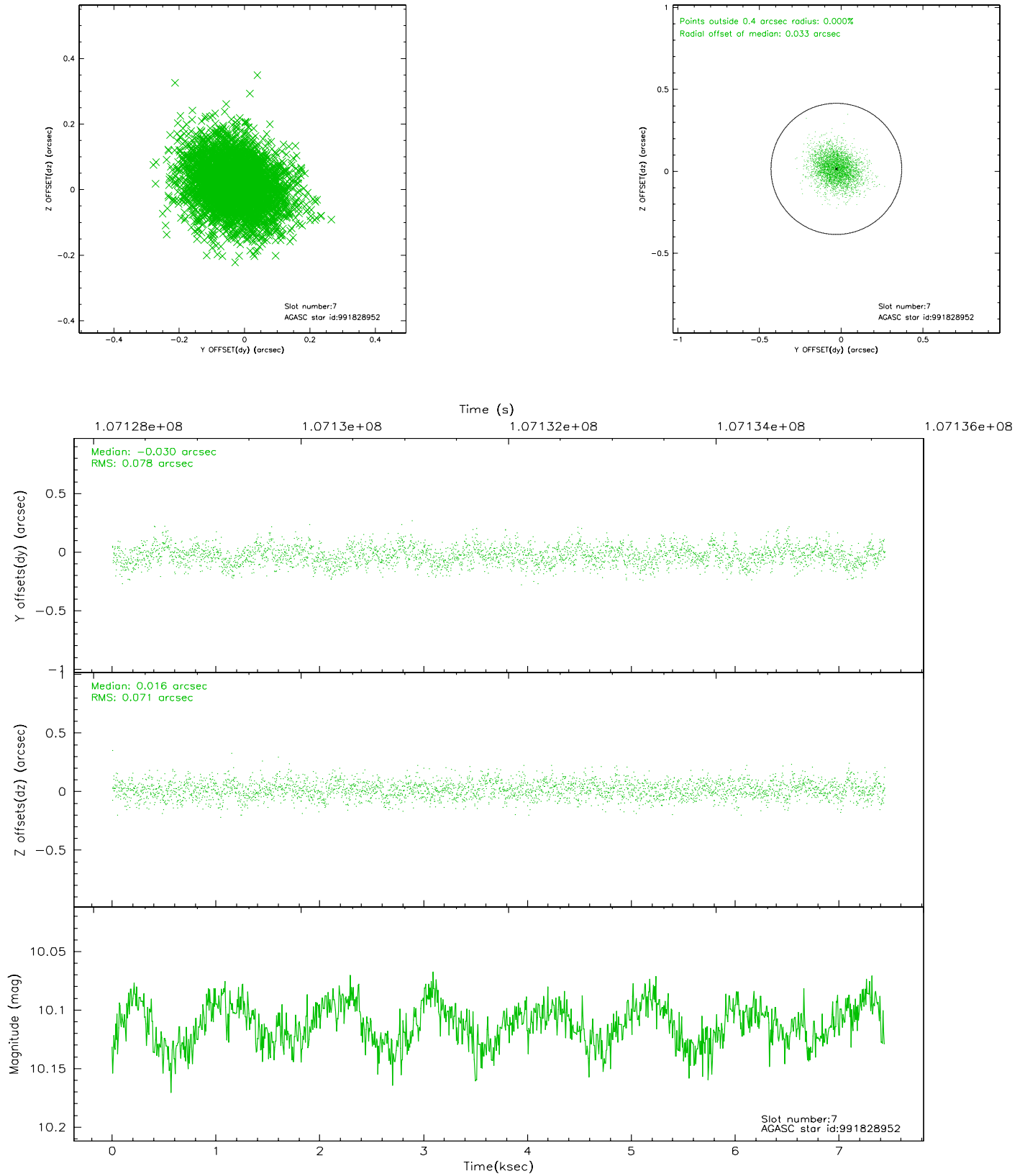
### 2.4.3 Slot 5



## 2.4.4 Slot 6

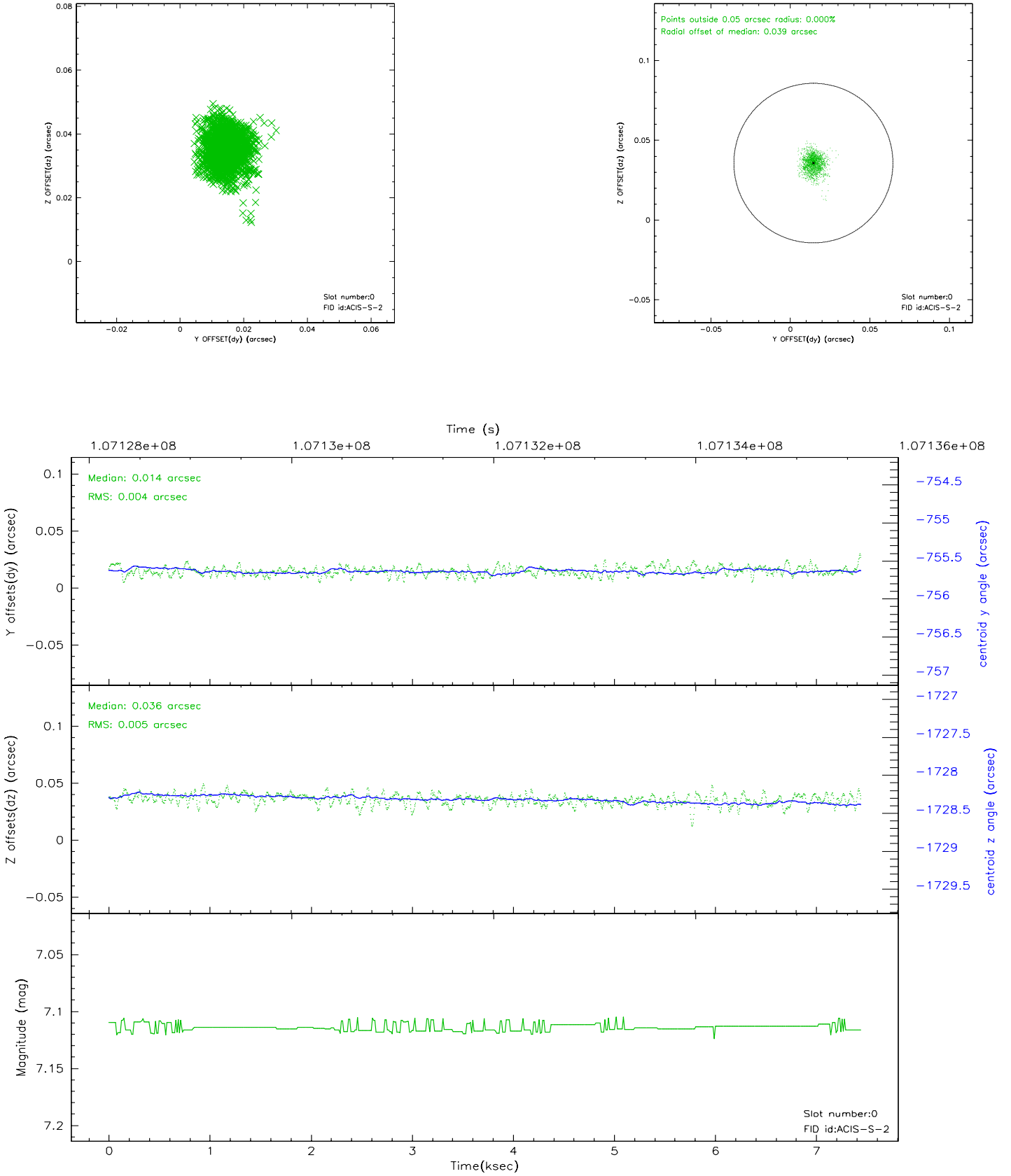


## 2.4.5 Slot 7

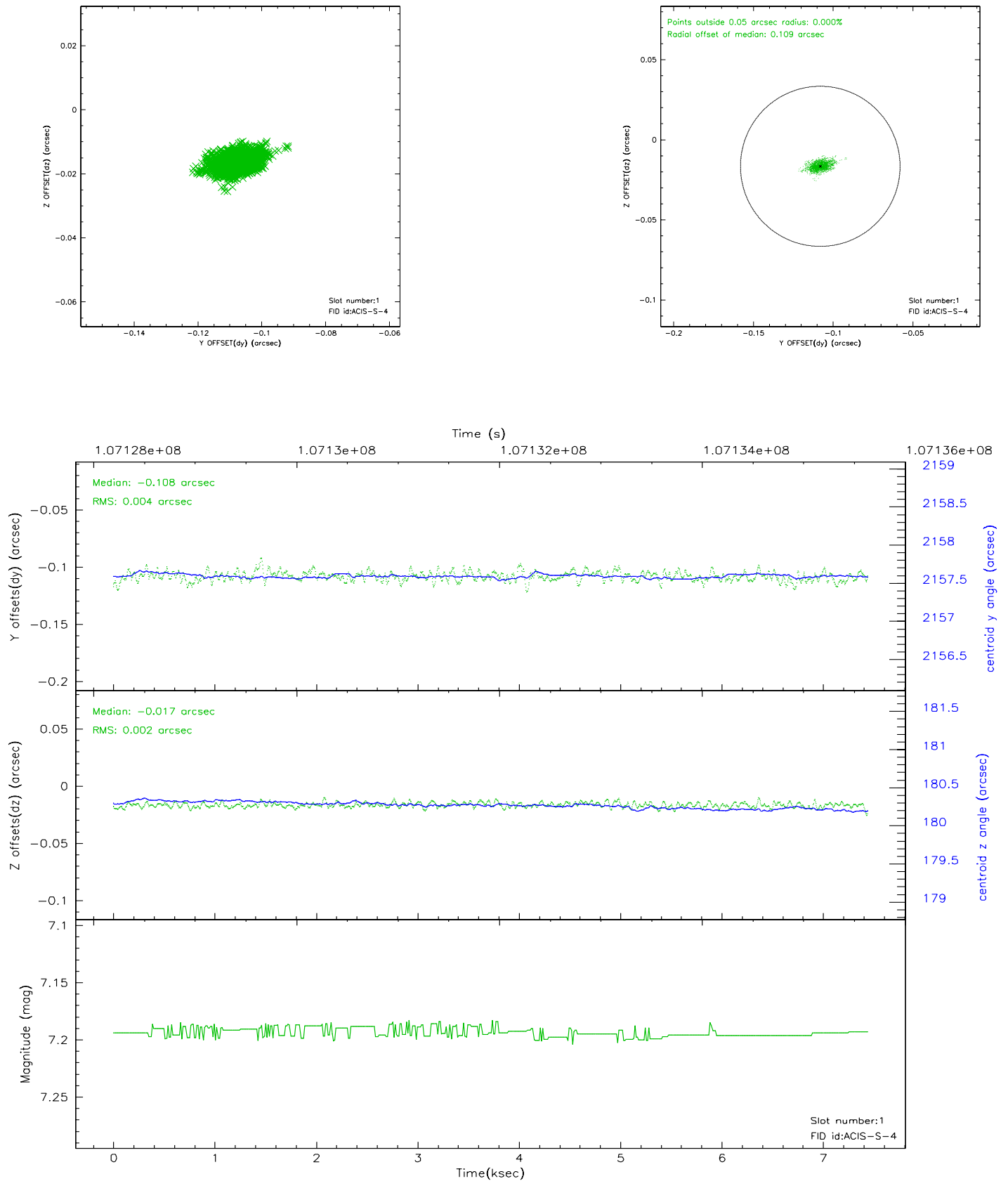


## 2.5 FID Slots

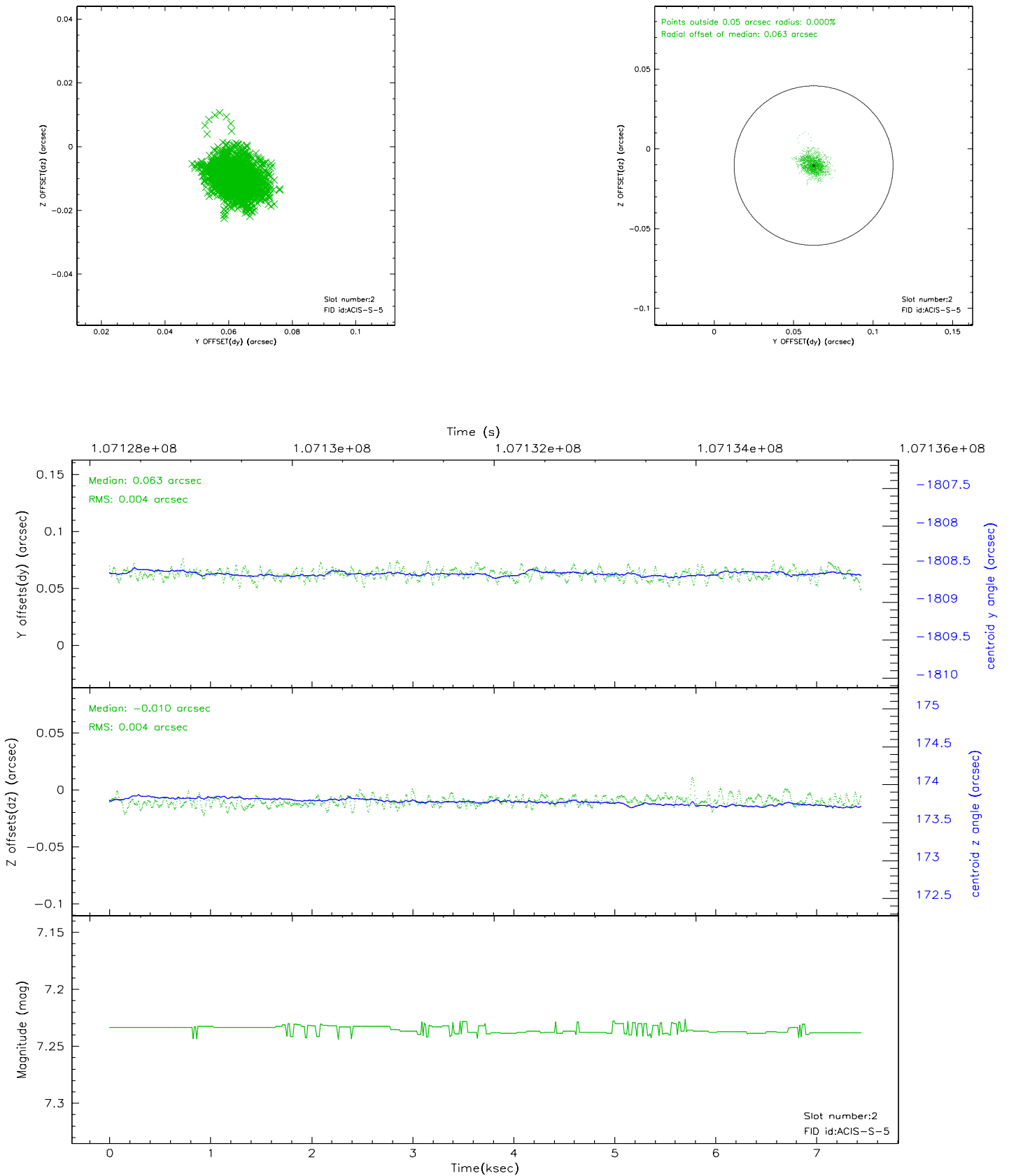
### 2.5.1 Slot 0



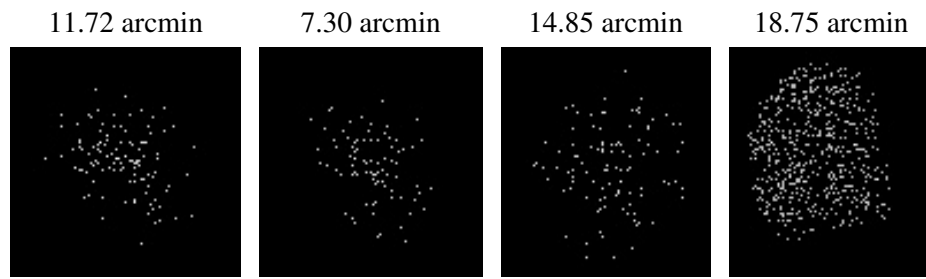
## 2.5.2 Slot 1



### 2.5.3 Slot 2



### 3 Point Sources



## A Summary

### A.1 Status

V&V Scientist	Jen Lauer
V&V Date (YYYY-MM-DD)	2006.11.24
V&V Edition	1
V&V Disposition and Status	OK
V&V Charge Time	7.353

### A.2 Comments