

V&V Reference Report

L2 ASCDS Version : 7.6.8.1

Observation 3358 - L2 Version 001
Chandra X-Ray Center

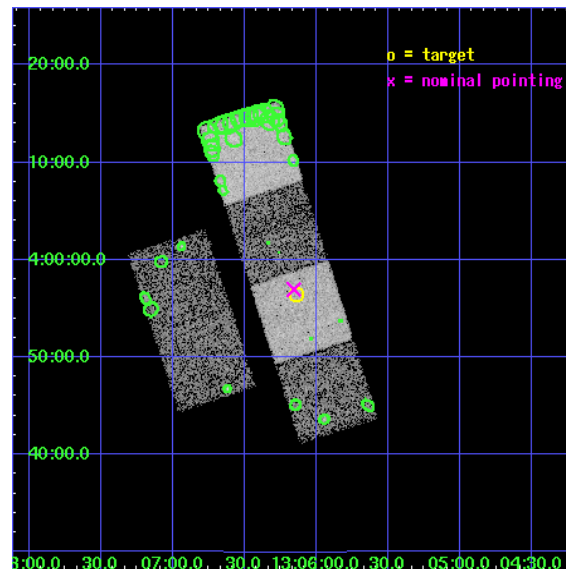
L2 Processing Date : Aug 29 2006

Contents

1	Front	2
2	OBI	3
2.1	OBI	3
2.1.1	Images	3
2.1.2	Bias	3
2.1.3	Parameters	4
2.1.4	Events	4
2.2	Compared Parameters	5
2.3	Aspect	6
2.4	Star Slots	9
2.4.1	Slot 3	9
2.4.2	Slot 4	10
2.4.3	Slot 5	11
2.4.4	Slot 6	12
2.4.5	Slot 7	13
2.5	FID Slots	14
2.5.1	Slot 0	14
2.5.2	Slot 1	15
2.5.3	Slot 2	16
3	Point Sources	17
A	Summary	18
A.1	Status	18
A.2	Comments	18

1 Front

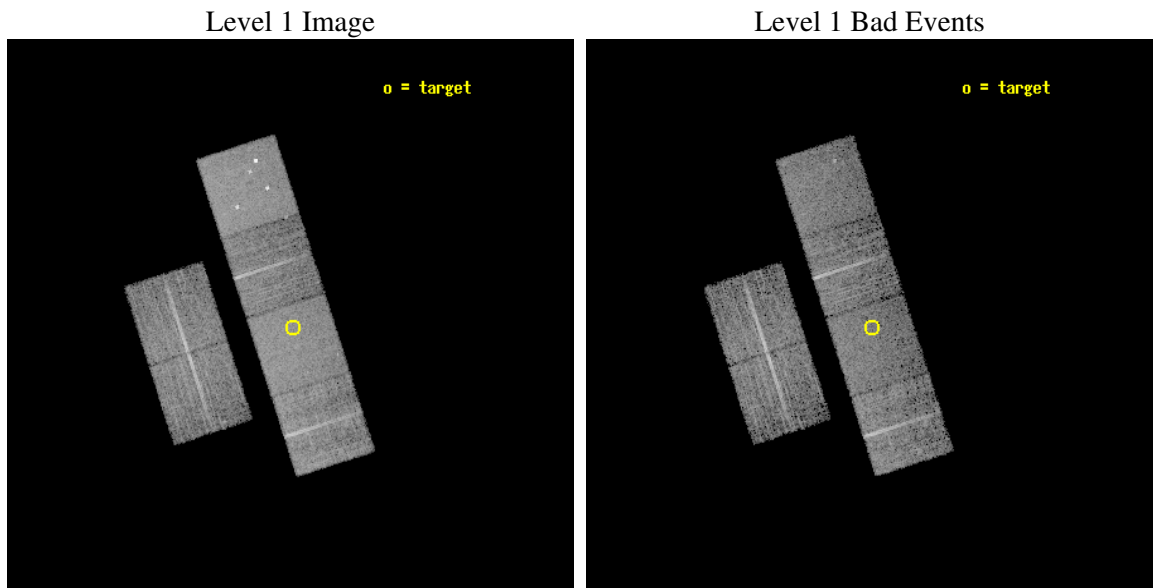
seq_num	700606
obs_id	3358
title	CHANDRA OBSERVATIONS OF THE THREE HIGHEST REDSHIFT QUASARS FROM THE SDSS
observer	Prof. William Brandt
object	SDSSP J130608+035626
dtcycle	0
cycle	P
ra_targ	196.534583
dec_targ	3.940639
ra_nom	196.53919864773
dec_nom	3.9492901545847
roll_nom	72.124407085051
revision	2
ontime	8262.400007695
livetime	8157.7765237775
ontime2	8262.400007695
ontime3	8259.1590175331
ontime5	8262.400007695
ontime6	8262.400007695
ontime7	8262.400007695
ontime8	8262.400007695
l2events	77421



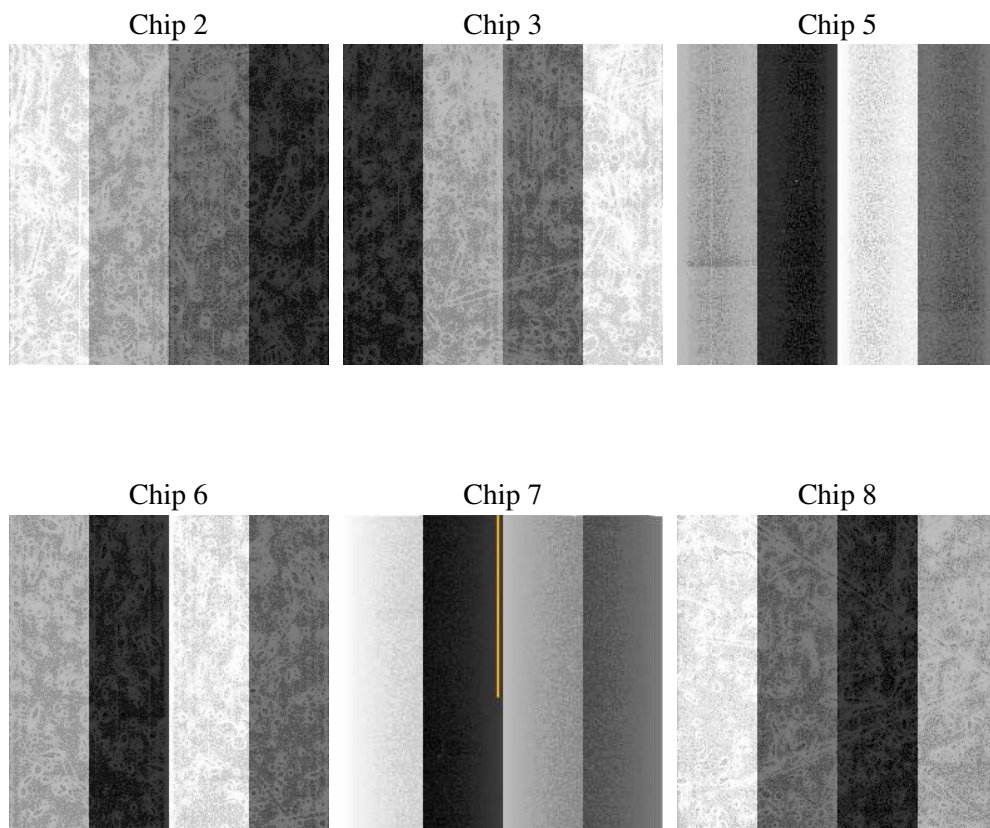
2 OBI

2.1 OBI

2.1.1 Images



2.1.2 Bias



2.1.3 Parameters

obi_num	2
ascdsver	7.6.8.1
caldsver	3.2.3
date	2006-08-29T16:29:07
revision	2

sched_exp_time	8300.000000
ontime	8267.797073245
ontime2	8264.5560631603
ontime3	8264.5560830832
ontime5	8267.797073245
ontime6	8267.797073245
ontime7	8267.797073245
ontime8	8267.797073245
l1events	365090

2.1.4 Events

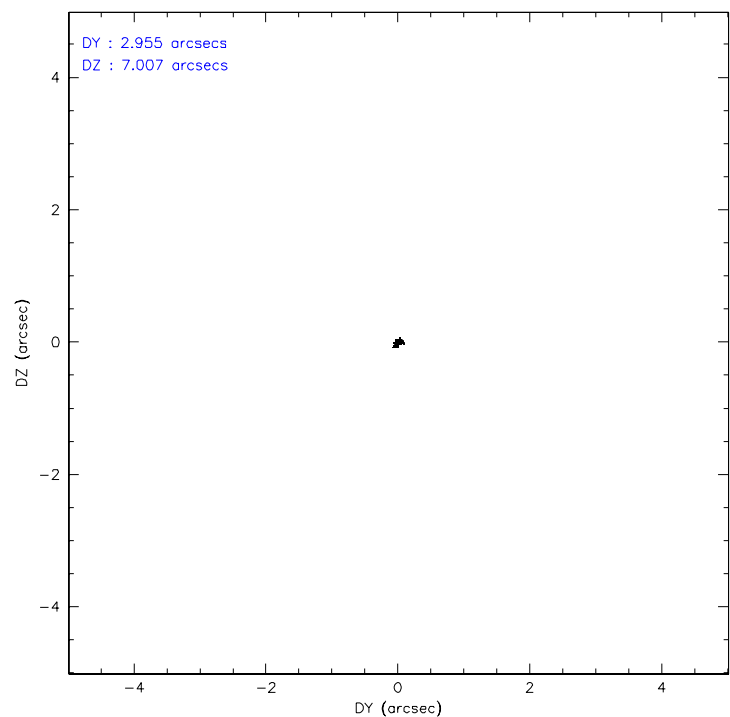
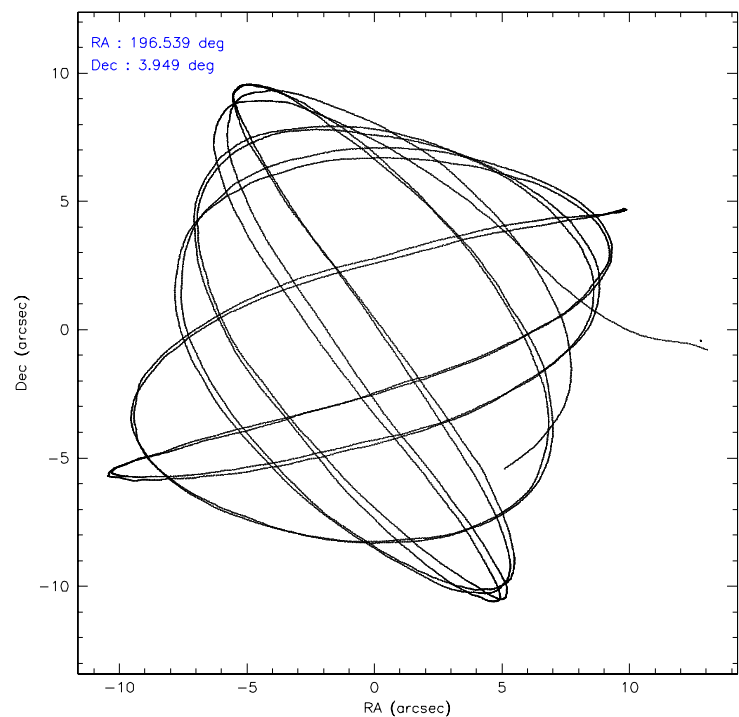
	ccd 2	ccd 3	ccd 5	ccd 6	ccd 7	ccd 8
level 1 events	52969	52308	76951	50691	67164	65007
rejected events	46881	46254	41807	44469	41165	51149
rejected %	88%	88%	54%	87%	61%	78%

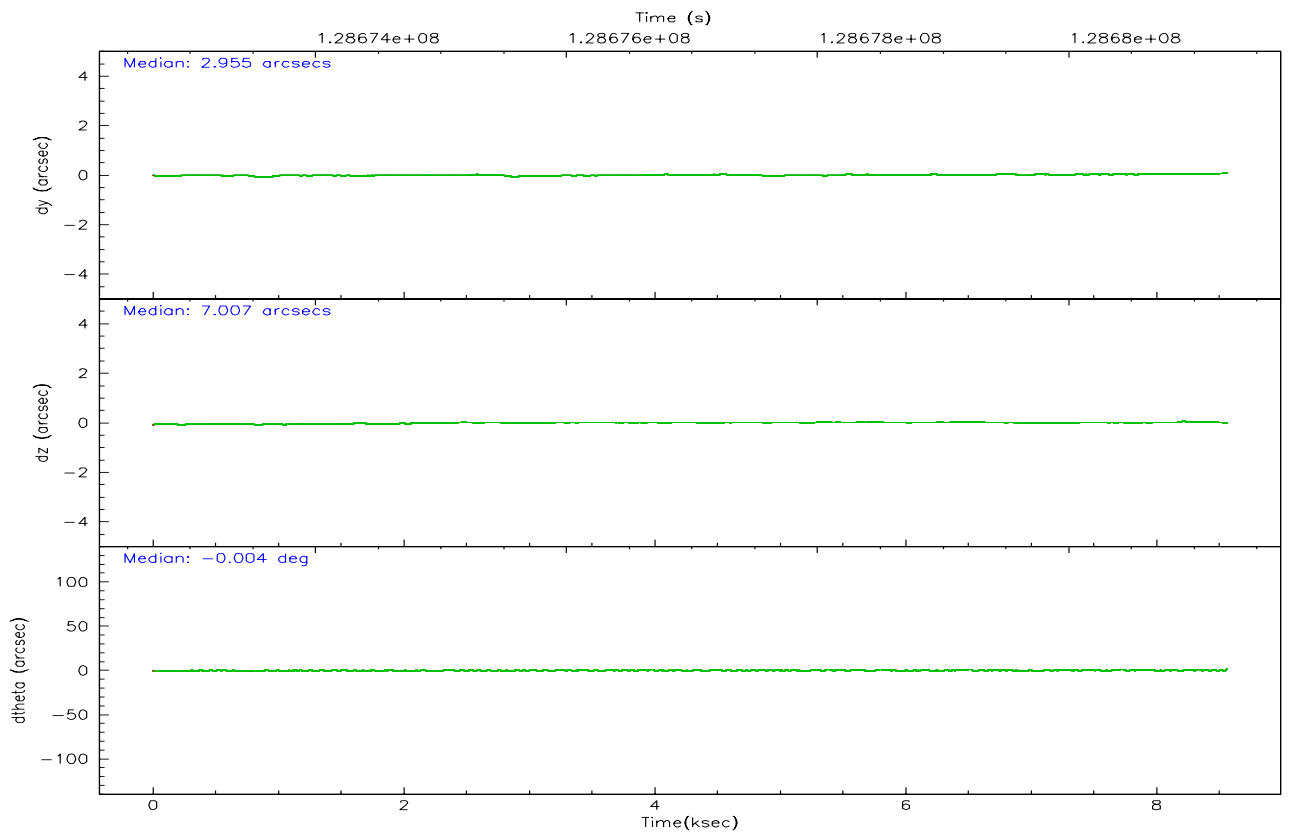
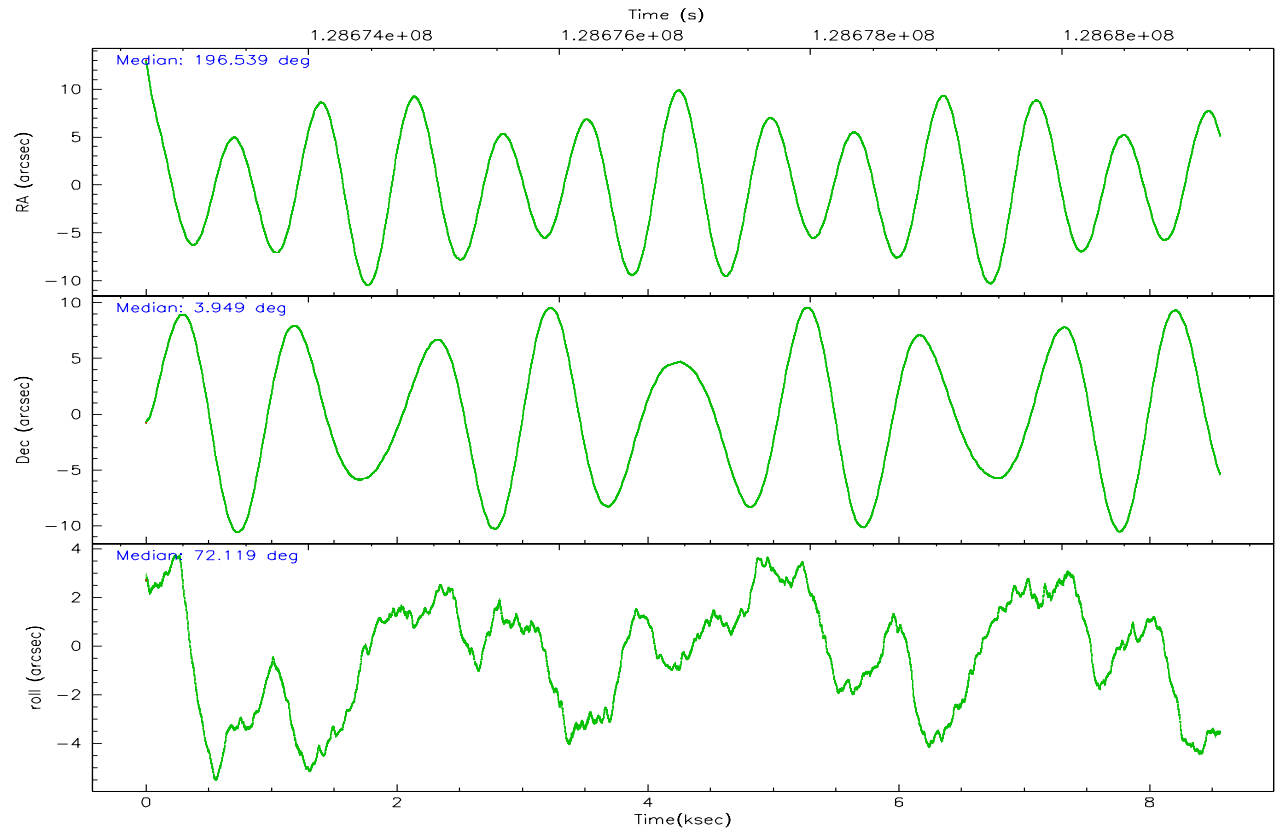
	ccd 2	ccd 3	ccd 5	ccd 6	ccd 7	ccd 8
grade 0 events	2550	2599	4624	2699	1720	4708
	4%	4%	6%	5%	2%	7%
grade 1 events	25	14	150	29	37	28
	0%	0%	0%	0%	0%	0%
grade 2 events	1330	1249	10739	1255	6425	2817
	2%	2%	13%	2%	9%	4%
grade 3 events	554	589	769	518	1365	1591
	1%	1%	0%	1%	2%	2%
grade 4 events	556	592	732	574	1336	1531
	1%	1%	0%	1%	1%	2%
grade 5 events	1832	1998	3470	2223	4541	2798
	3%	3%	4%	4%	6%	4%
grade 6 events	1098	1028	18301	1178	15165	3218
	2%	1%	23%	2%	22%	4%
grade 7 events	45024	44239	38166	42215	36575	48316
	85%	84%	49%	83%	54%	74%

2.2 Compared Parameters

Parameter	Planned	Actual	Parameter	Planned	Actual
Instrument	ACIS	ACIS	Obspar format version number	6	6
Detector	ACIS-235678	ACIS-235678	Obspar file type	PREDICTED	ACTUAL
Grating	NONE	NONE	Obspar update status	NONE	UPDATED
Data mode	FAINT	FAINT	On-chip summing requested	N	N
Observation mode	POINTING	POINTING	Subarray requested	NONE	NONE
Pointing RA	196.545221	196.5391986477269	Alternating exposures requested	N	N
Pointing Dec	3.922640	3.949290154584729	Primary exposure time	0.000000	3.2
Pointing Roll	71.967361	72.12440708505125			
SIM focus pos (mm)	-0.684267	-0.6828225247311905			
SIM defocus (mm)	0	0.001444936568705701			
SIM translation stage pos (mm)	-190.132523	-190.1400660498719			
SIM translation stage offset (mm)	0	0.00754346686406393			
Observation start time	128672968.184000	128671968.69757			
Observation start date	2002-01-29T06:28:24	2002-01-29T06:12:48			
Observation end time	128681268.184000	128681886.59797			
Observation end date	2002-01-29T08:46:44	2002-01-29T08:58:06			
Read mode	TIMED	TIMED			

2.3 Aspect



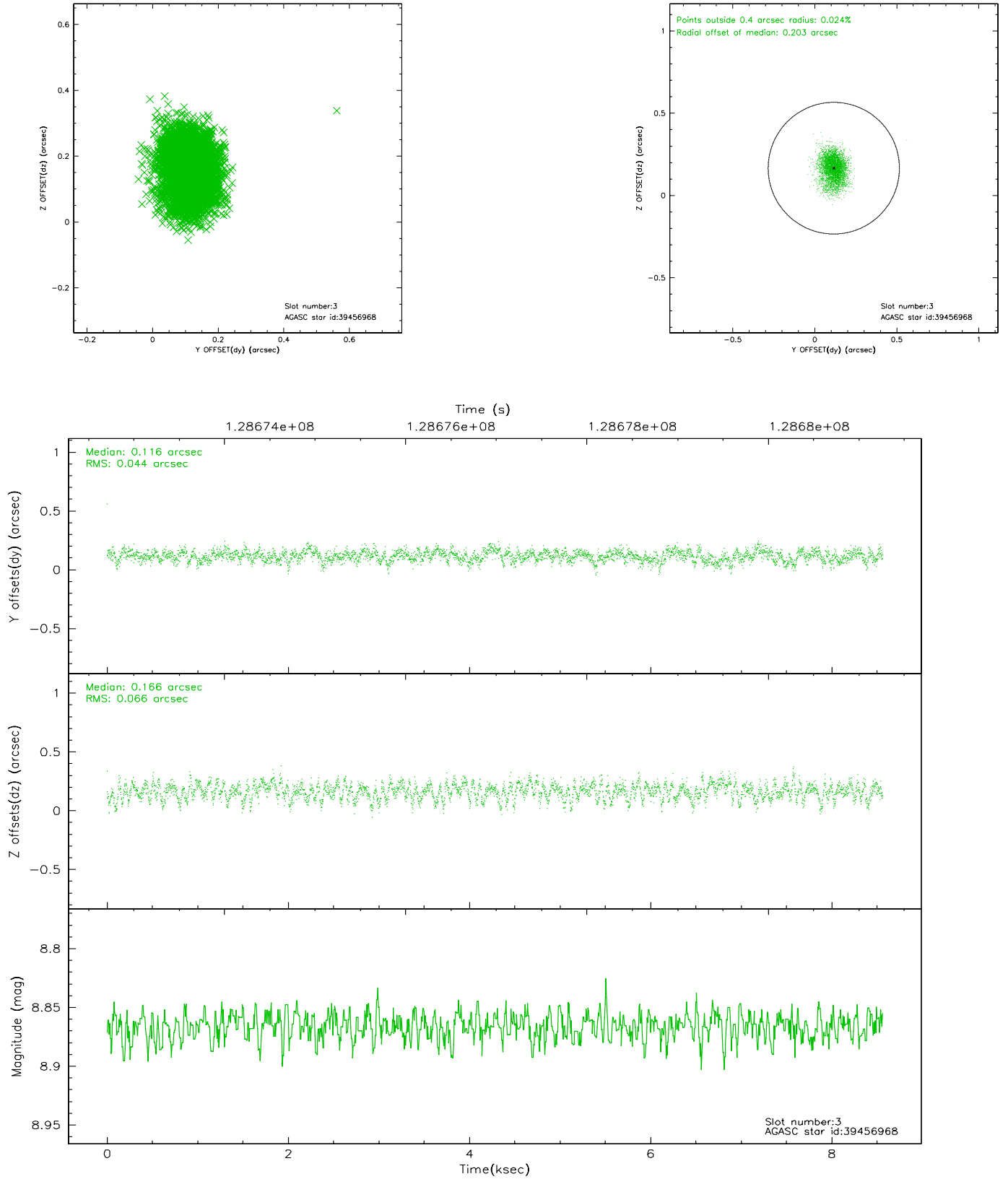


Slot Statistics

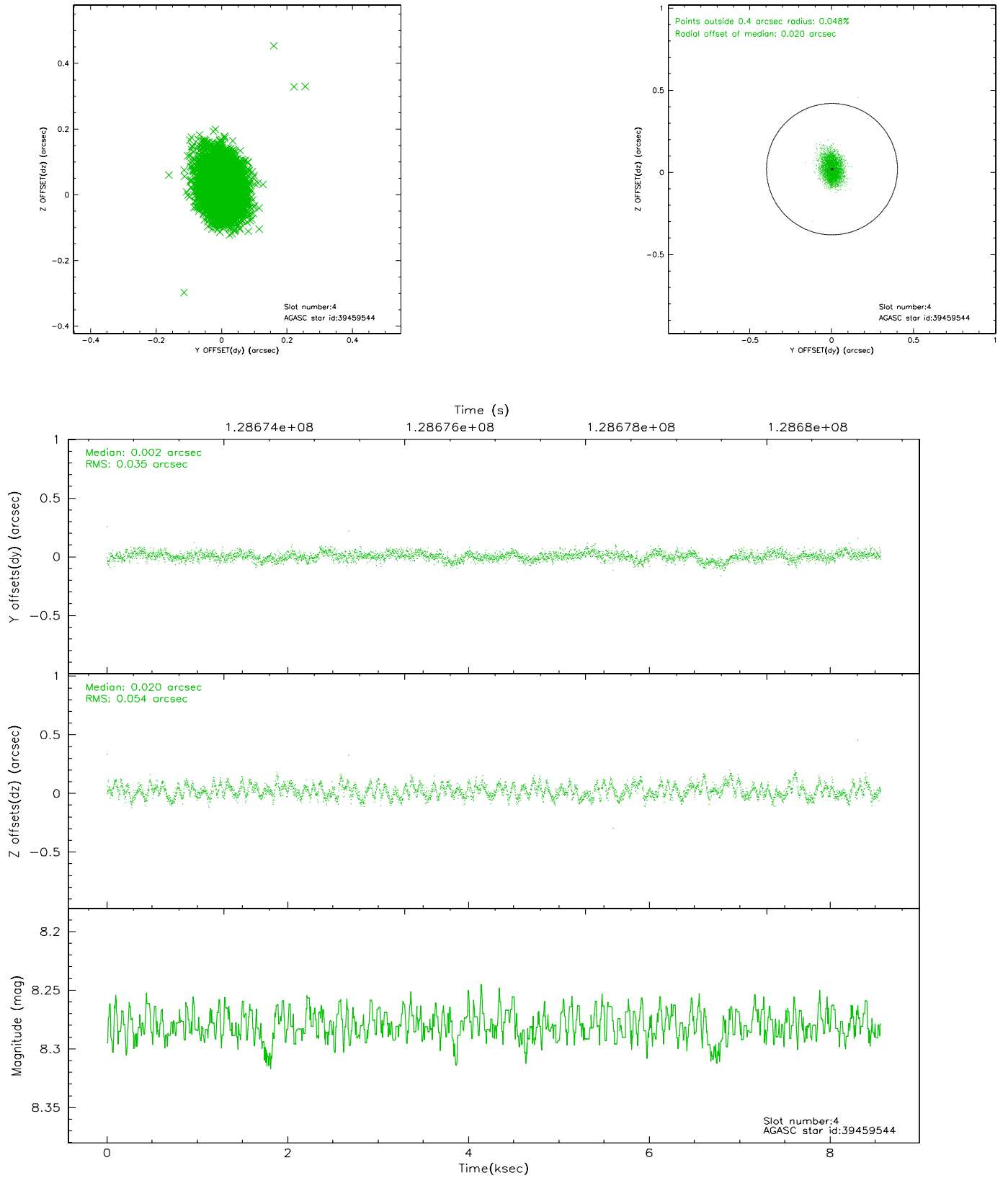
slot	status	id	mag	n_pts	med_dy	med_dz	dr1	dr2	ra	dec	mean_y	mean_z
0	FID	ACIS-S-2	7.12	2089	-0.005	0.029	0.007	0.011	0.000000	0.000000	-755.60	-1728.14
1	FID	ACIS-S-4	7.20	2089	-0.072	-0.005	0.005	0.008	0.000000	0.000000	2157.31	179.66
2	FID	ACIS-S-5	7.24	2089	0.046	-0.015	0.006	0.011	0.000000	0.000000	-1807.56	174.04
3	GUIDE	39456968	8.87	4175	0.116	0.166	0.083	0.139	197.002418	3.256123	-1771.00	-2305.97
4	GUIDE	39459544	8.28	4178	0.002	0.020	0.068	0.109	196.876637	3.937077	418.90	-1116.85
5	GUIDE	39460960	8.78	4176	-0.203	0.228	0.070	0.119	197.081855	4.096991	1195.26	-1638.40
6	GUIDE	39456752	8.18	4178	-0.082	-0.175	0.056	0.092	196.438082	4.090522	456.85	551.57
7	GUIDE	39458464	10.19	4176	0.162	-0.227	0.140	0.274	196.240566	3.720727	-1028.43	814.93

2.4 Star Slots

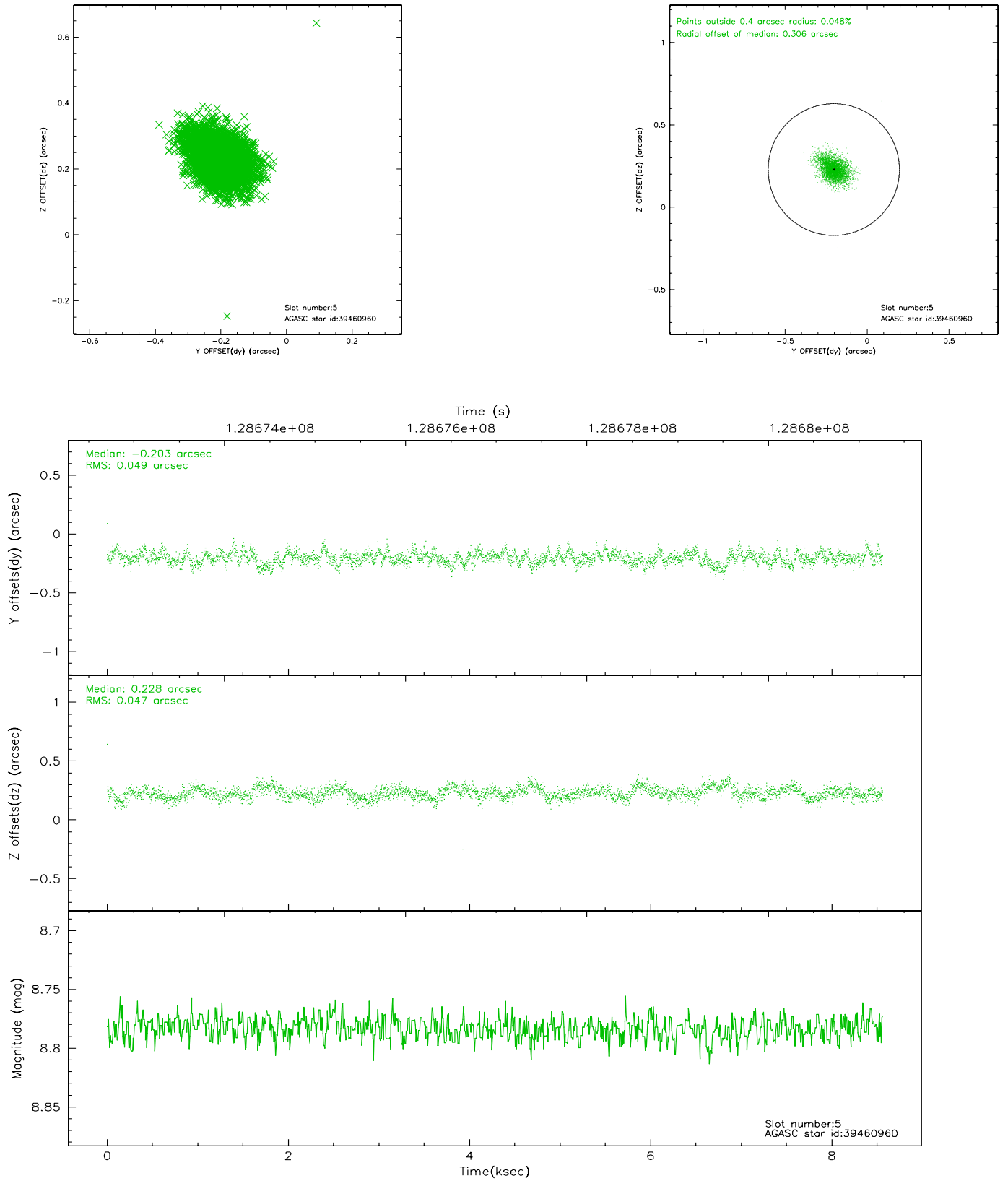
2.4.1 Slot 3



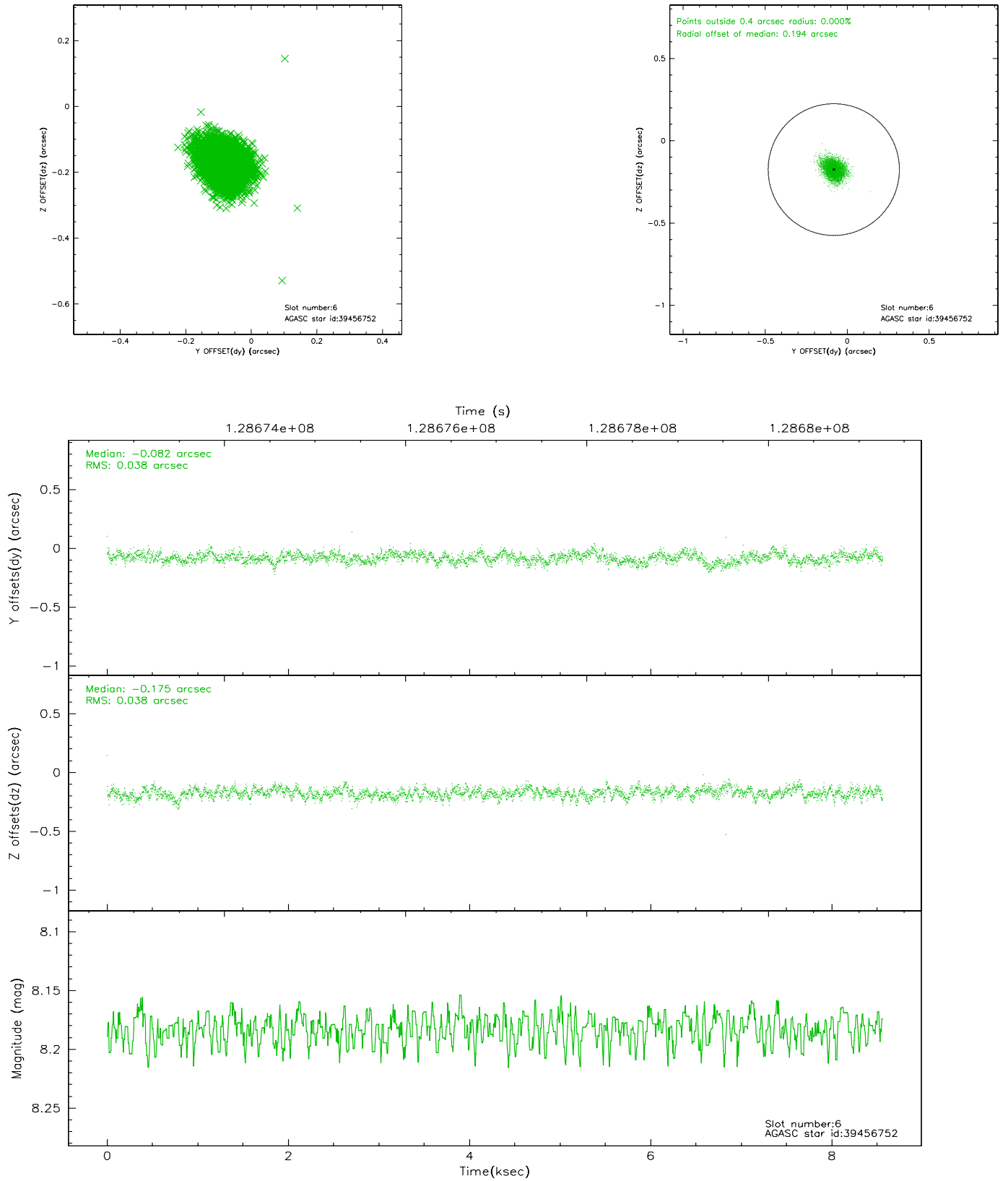
2.4.2 Slot 4



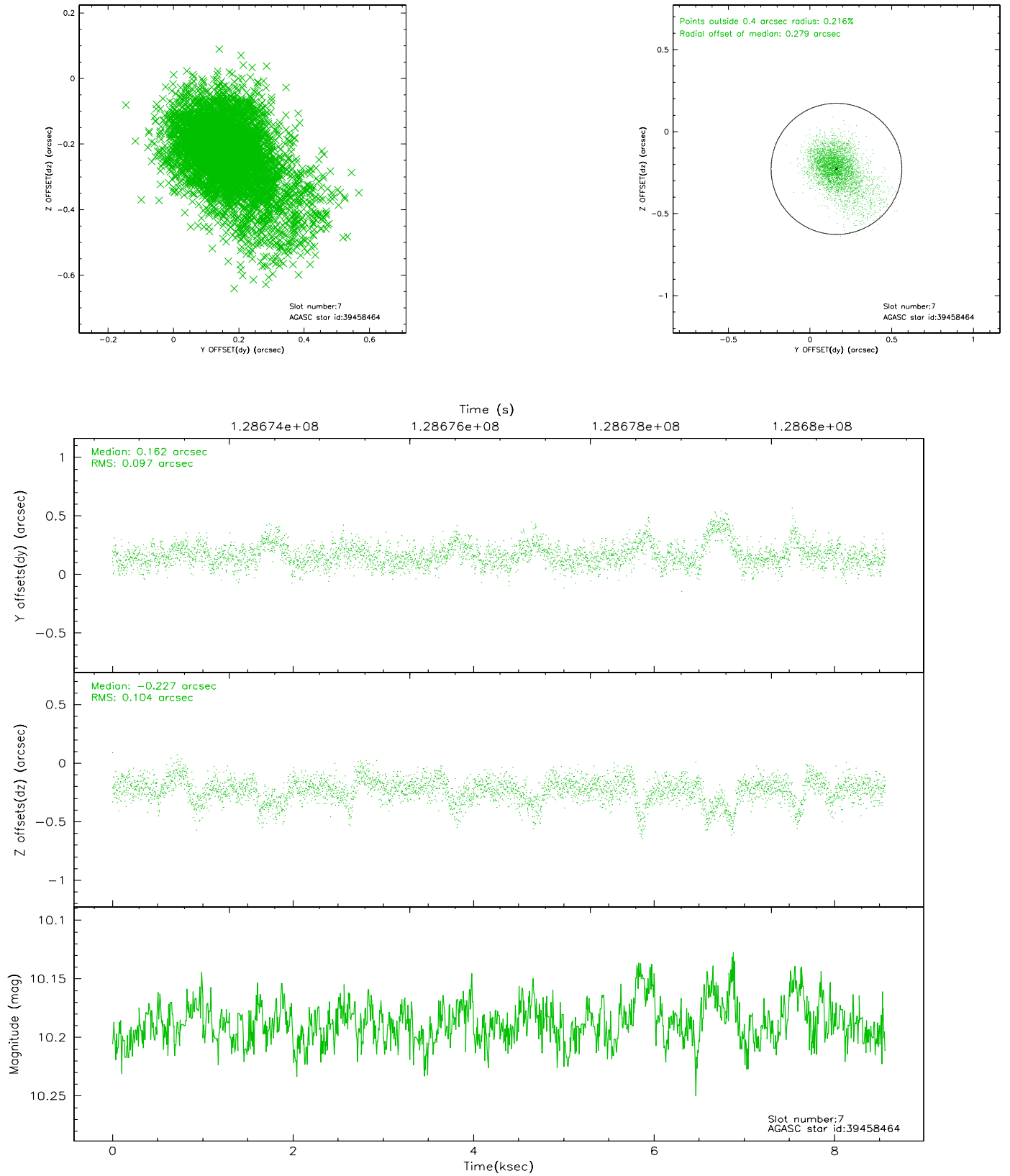
2.4.3 Slot 5



2.4.4 Slot 6

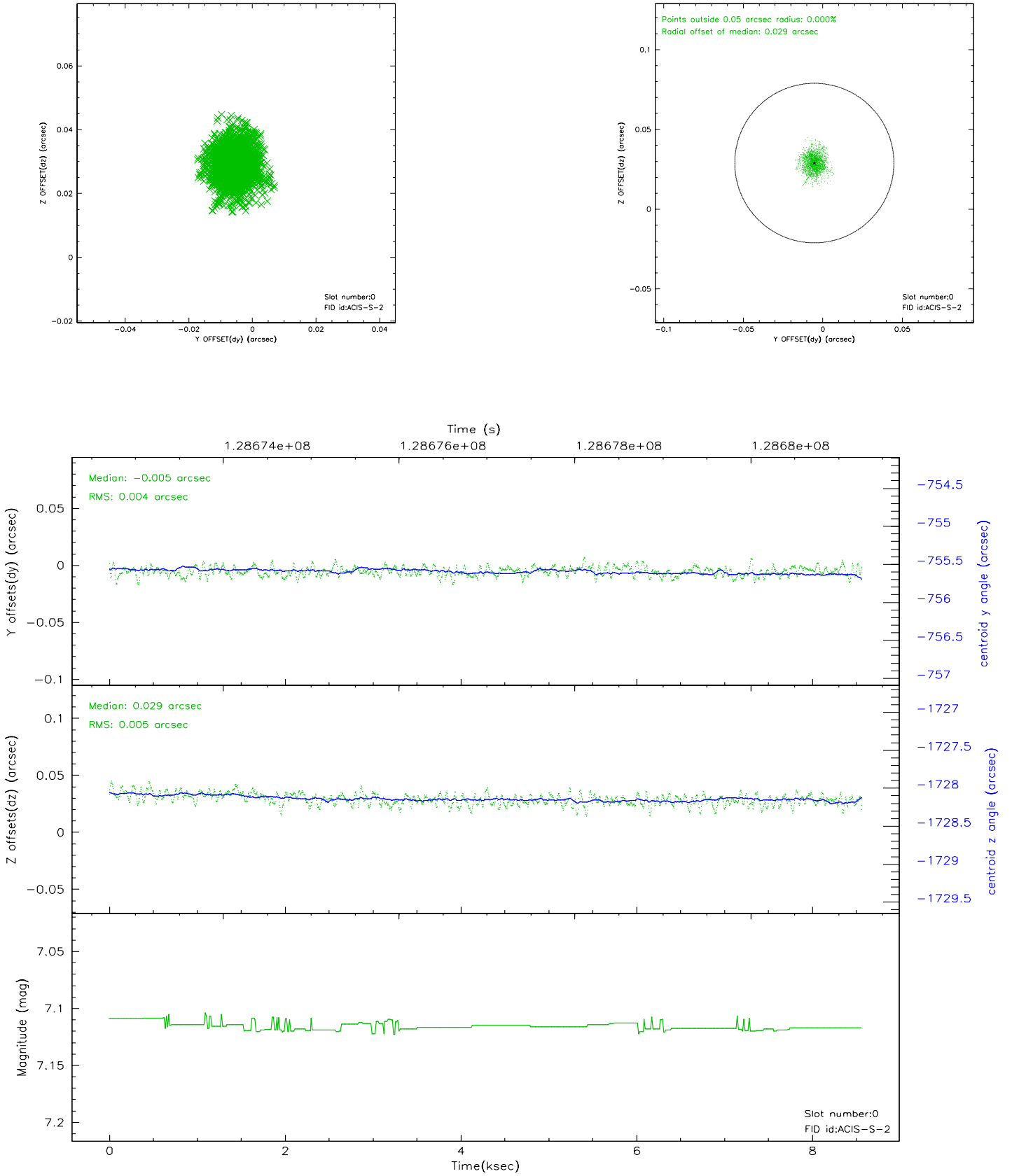


2.4.5 Slot 7

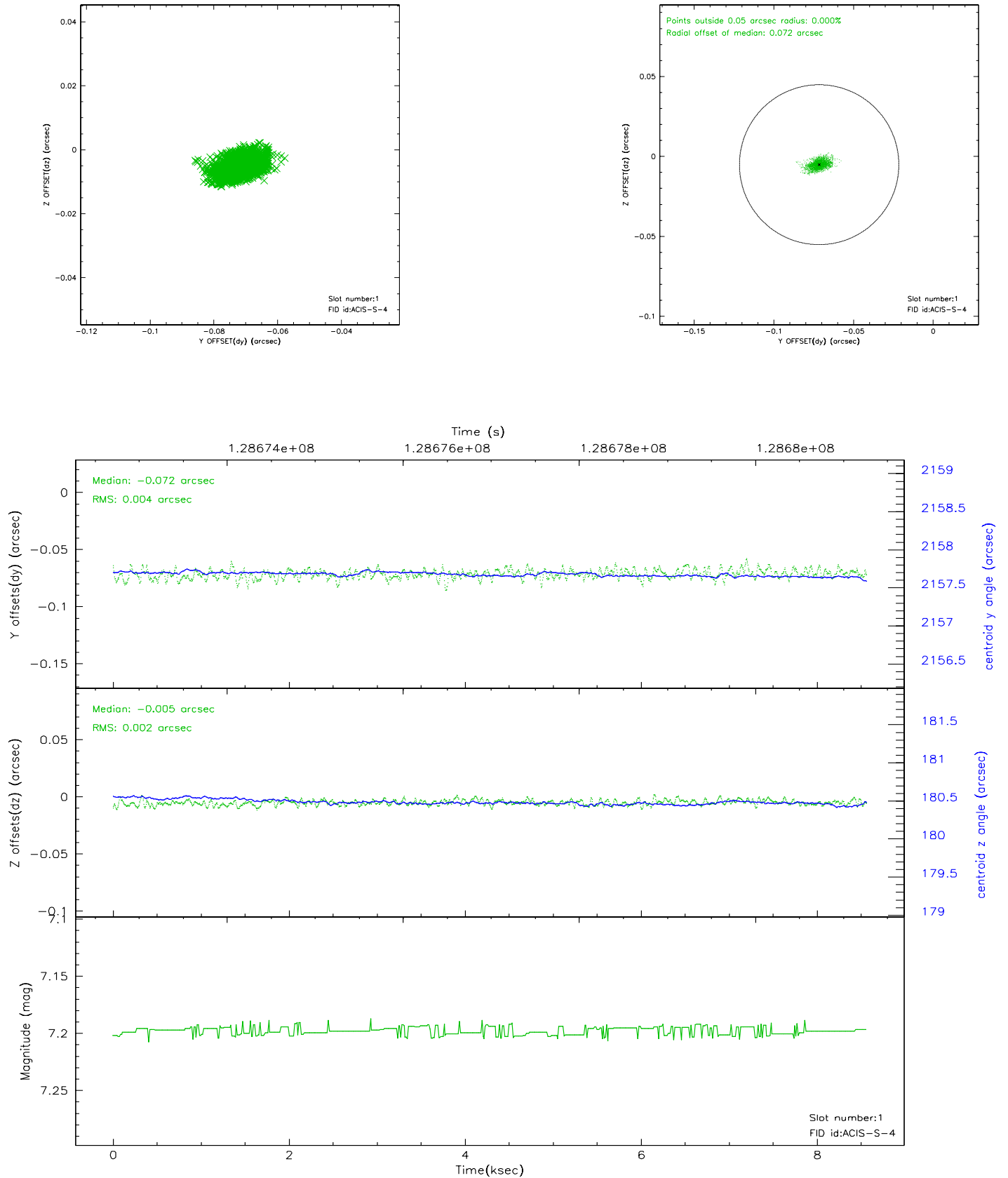


2.5 FID Slots

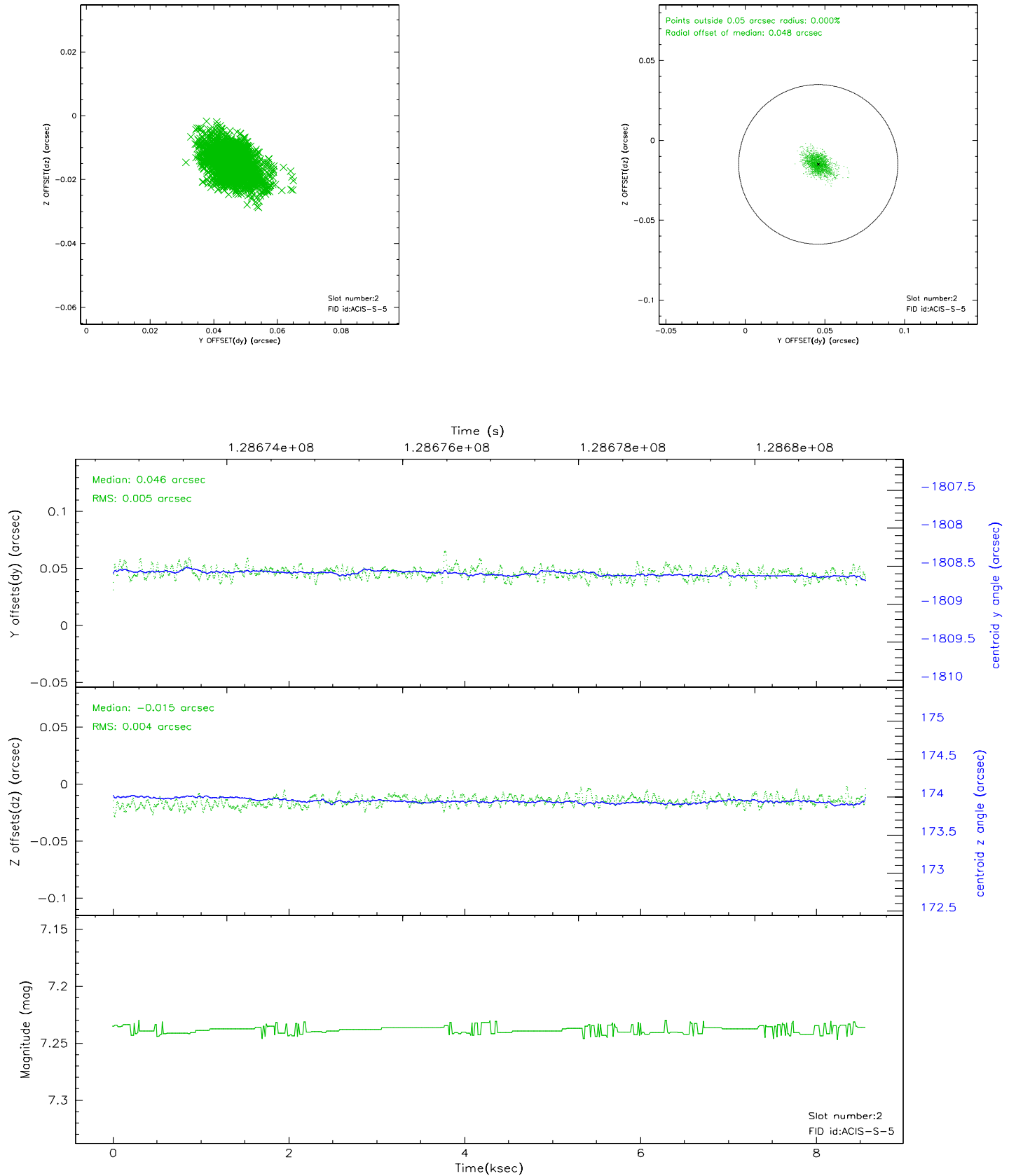
2.5.1 Slot 0



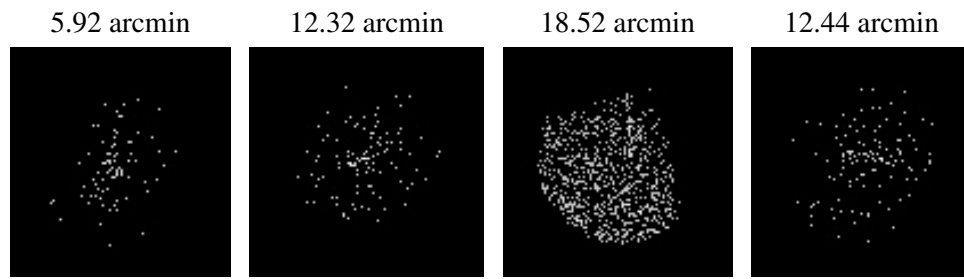
2.5.2 Slot 1



2.5.3 Slot 2



3 Point Sources



A Summary

A.1 Status

V&V Scientist	Jen Lauer
V&V Date (YYYY-MM-DD)	2006.08.29
V&V Edition	1
V&V Disposition and Status	OK
V&V Charge Time	8.262

A.2 Comments