

# V&V Reference Report

## L2 ASCDS Version : 8.4.5

Observation 3357 - L2 Version 3  
Chandra X-Ray Center

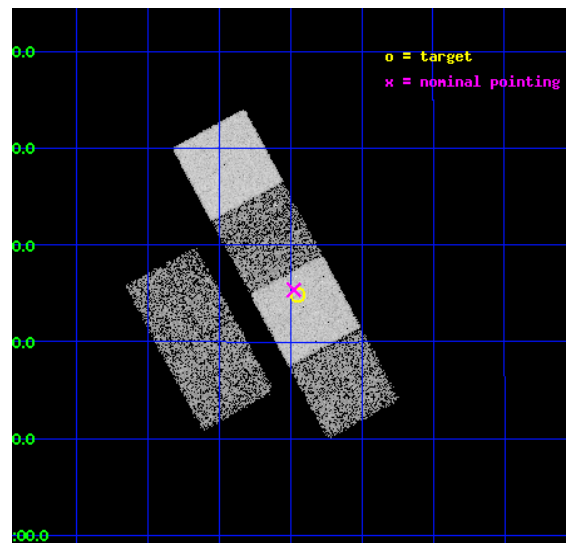
L2 Processing Date : Oct 1 2012

## Contents

<b>1</b>	<b>Front</b>	<b>2</b>
<b>2</b>	<b>OBI</b>	<b>3</b>
2.1	OBI . . . . .	3
2.1.1	Images . . . . .	3
2.1.2	Bias . . . . .	3
2.1.3	Parameters . . . . .	4
2.1.4	Events . . . . .	4
2.2	Compared Parameters . . . . .	5
2.3	Aspect . . . . .	6
2.4	Star Slots . . . . .	9
2.4.1	Slot 3 . . . . .	9
2.4.2	Slot 4 . . . . .	10
2.4.3	Slot 5 . . . . .	11
2.4.4	Slot 6 . . . . .	12
2.4.5	Slot 7 . . . . .	13
2.5	FID Slots . . . . .	14
2.5.1	Slot 0 . . . . .	14
2.5.2	Slot 1 . . . . .	15
2.5.3	Slot 2 . . . . .	16
<b>A</b>	<b>Summary</b>	<b>17</b>
A.1	Status . . . . .	17
A.2	Comments . . . . .	17

# 1 Front

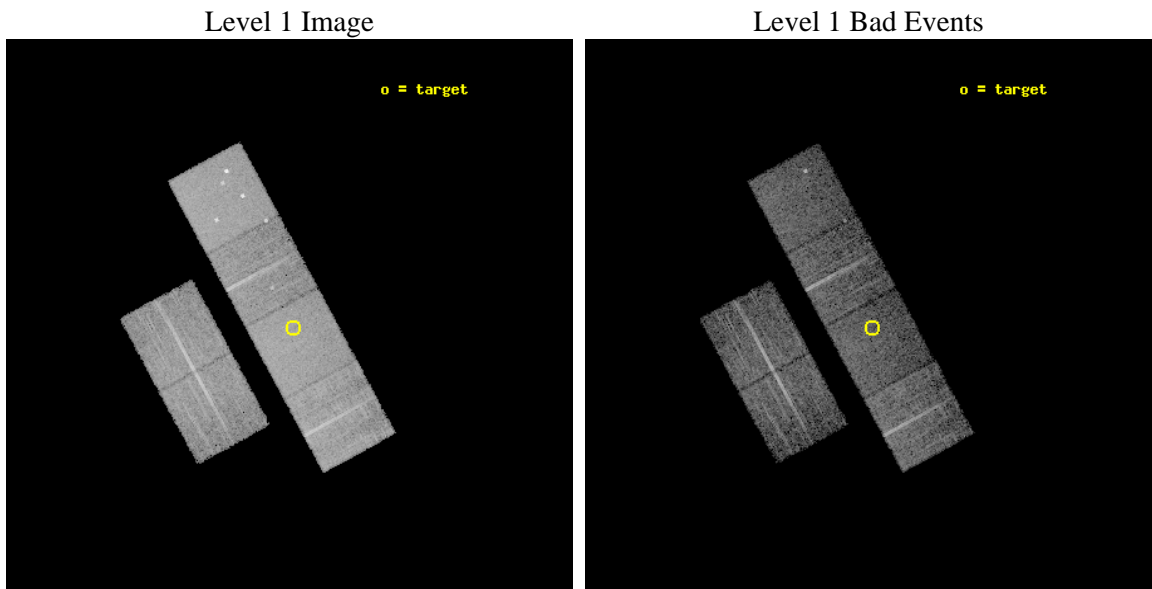
seq_num	700605	Sequence number
obs_id	3357	Observation id
title	CHANDRA OBSERVATIONS OF THE THREE HIGHEST REDSHIFT QUASARS FROM THE SDSS	Proposal title
observer	Prof. William Brandt	Principal investigator
object	SDSSP J103027+052455	Source name
dtcycle	0	&#160
cycle	P	events from which exps? Prim/Second/Both
ra_targ	157.612917	Observer's specified target RA [deg]
dec_targ	5.415278	Observer's specified target Dec [deg]
ra_nom	157.61900636649	Nominal RA [deg]
dec_nom	5.4229360467637	Nominal Dec [deg]
roll_nom	61.564717836518	Nominal Roll [deg]
revision	3	Processing version of data
ontime	8054.4000074863	Sum of GTIs [s]
livetime	7952.4103448141	Livetime [s]
ontime2	8054.4000074863	Sum of GTIs [s]
ontime3	8054.4000074863	Sum of GTIs [s]
ontime5	8054.4000074863	Sum of GTIs [s]
ontime6	8054.4000074863	Sum of GTIs [s]
ontime7	8054.4000074863	Sum of GTIs [s]
ontime8	8051.1590372324	Sum of GTIs [s]
l2events	77374	Number of level 2 events



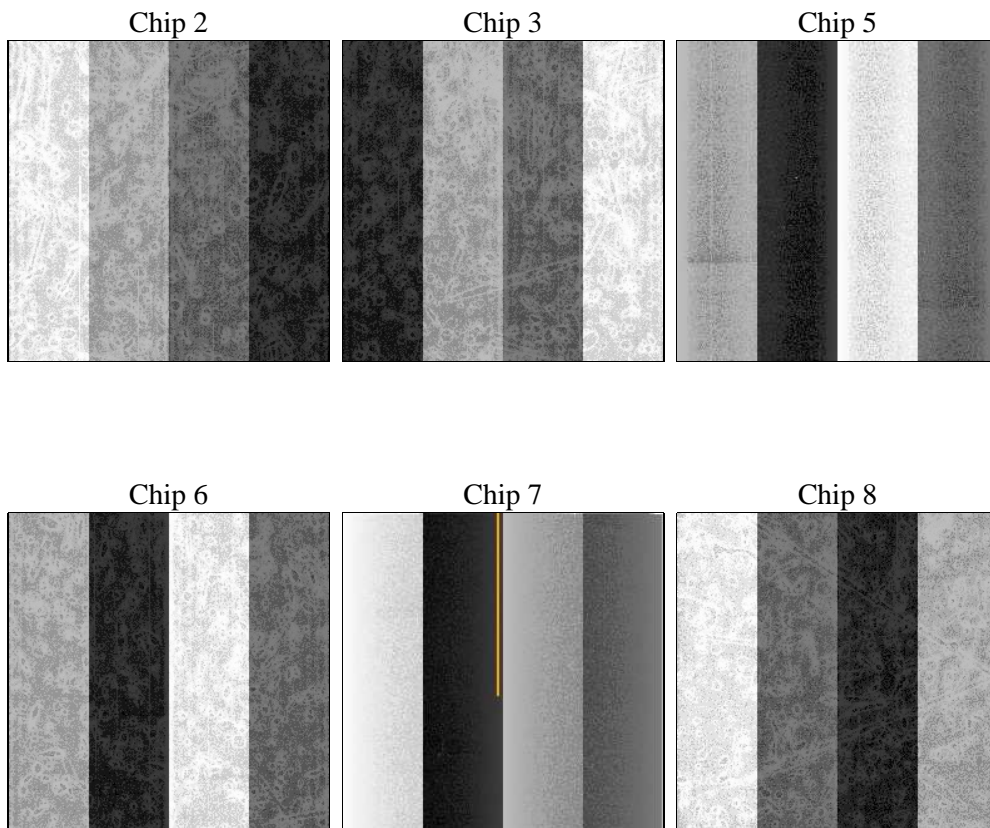
## 2 OBI

### 2.1 OBI

#### 2.1.1 Images



#### 2.1.2 Bias



### 2.1.3 Parameters

obi_num	2	Obi number	sched_exp_time	8300.000000	[s] Scheduled observation exposure time
ascdsver	8.4.5	Processing system revision	ontime	8054.4000074863	Sum of GTIs [s]
caldsver	4.5.2	&#160	ontime2	8054.4000074863	Sum of GTIs [s]
date	2012-10-01T05:50:24	Date and time of file creation	ontime3	8054.4000074863	Sum of GTIs [s]
revision	3	Processing version of data	ontime5	8054.4000074863	Sum of GTIs [s]
			ontime6	8054.4000074863	Sum of GTIs [s]
			ontime7	8054.4000074863	Sum of GTIs [s]
			ontime8	8051.1590372324	Sum of GTIs [s]
			l1events	361057	Number of level 1 events

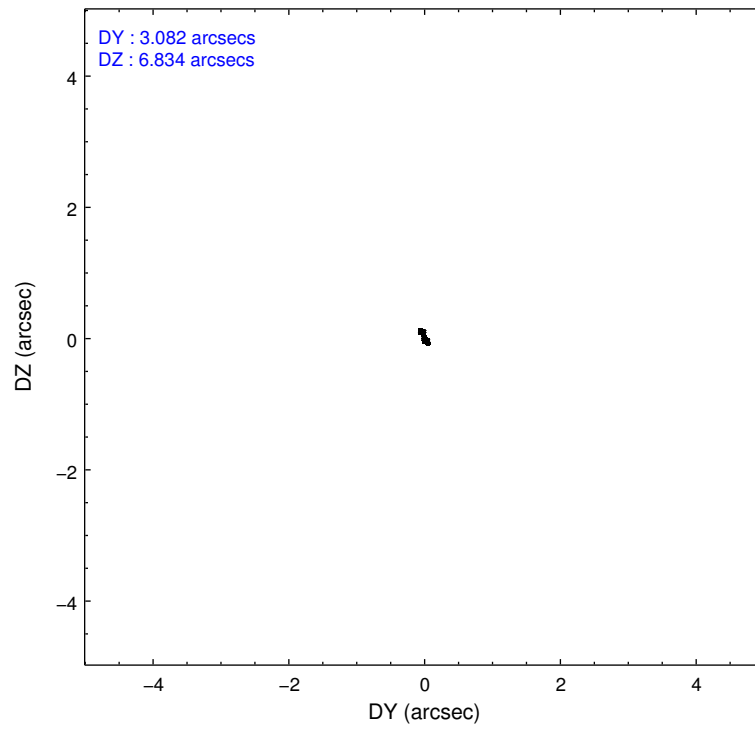
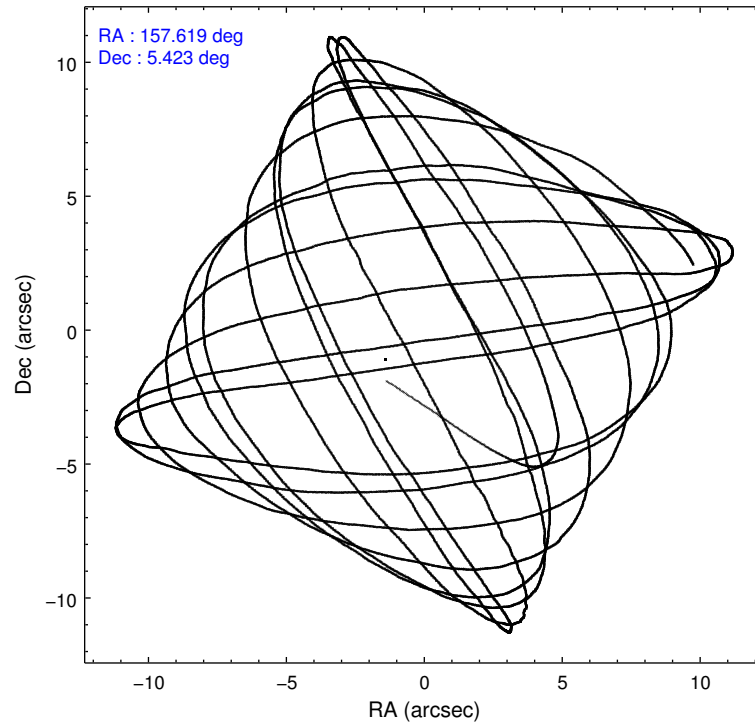
### 2.1.4 Events

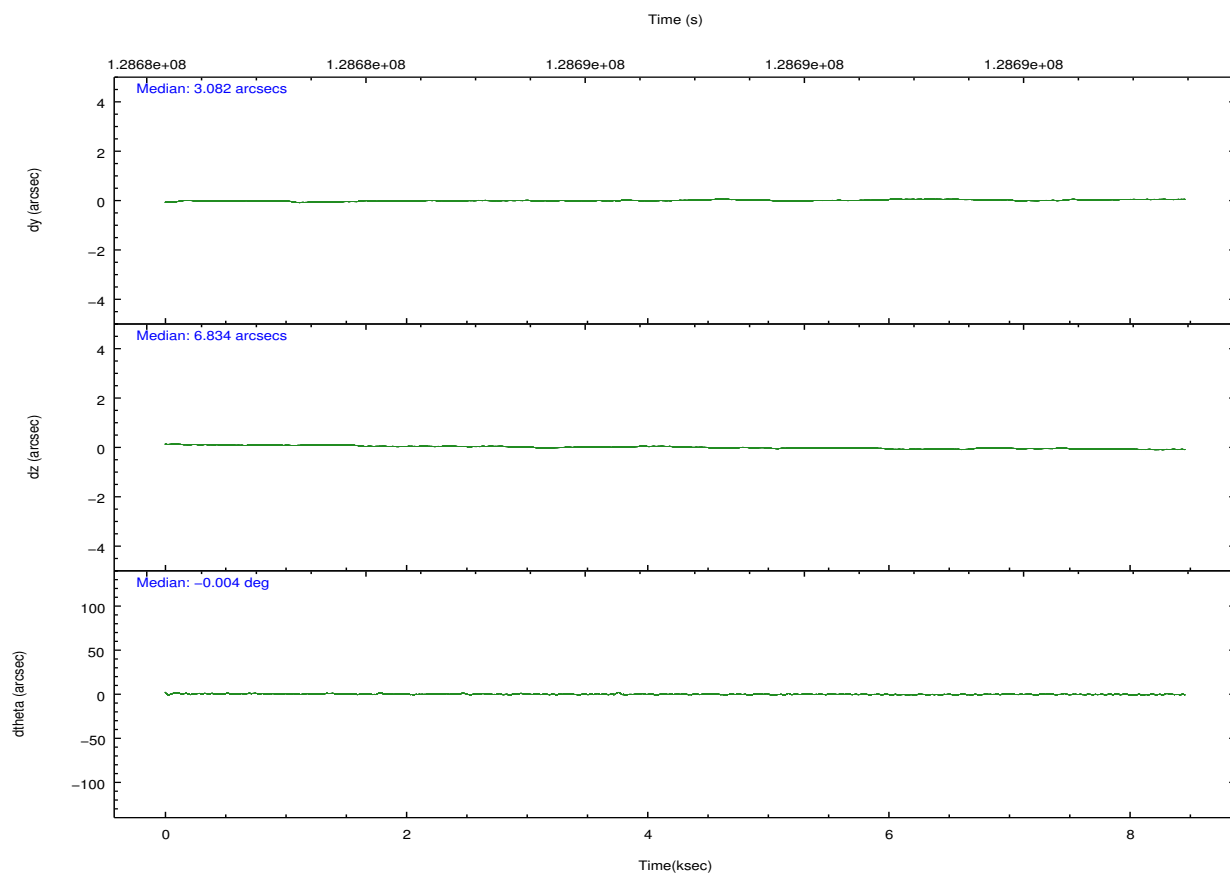
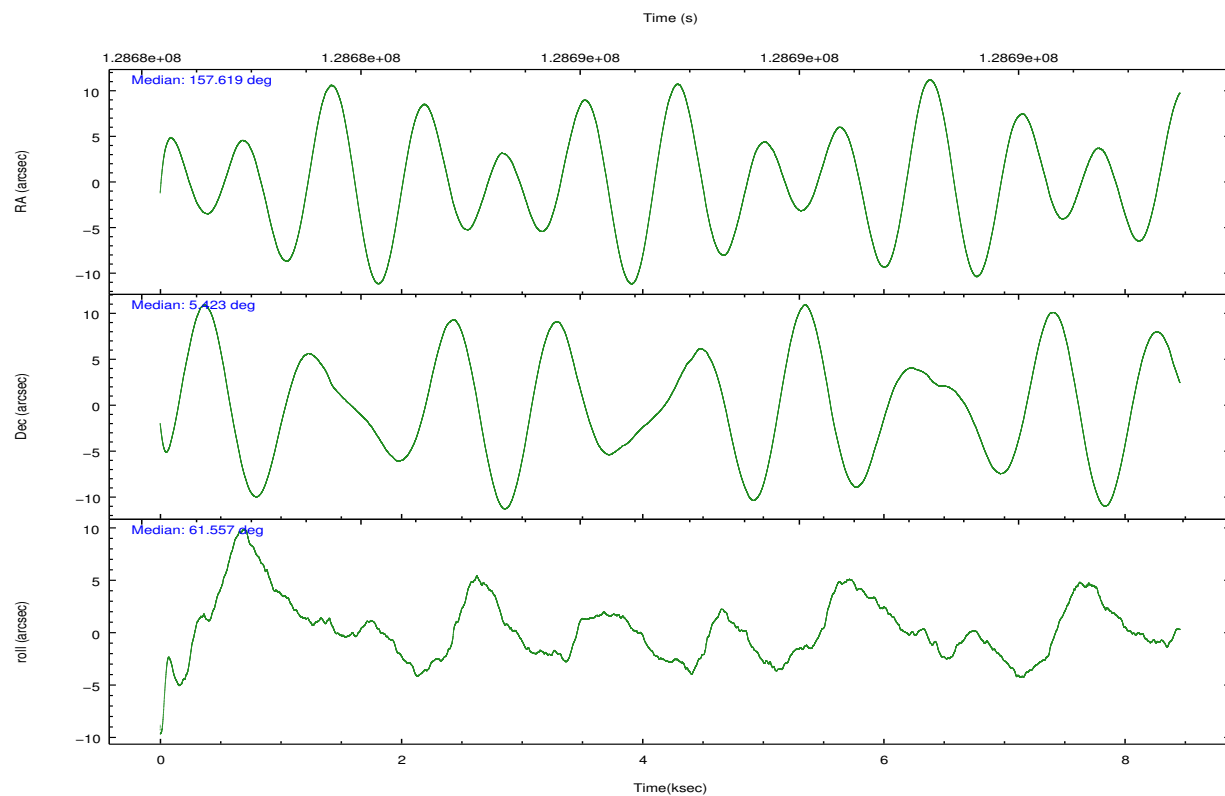
	ccd 2	ccd 3	ccd 5	ccd 6	ccd 7	ccd 8		ccd 2	ccd 3	ccd 5	ccd 6	ccd 7	ccd 8
level 1 events	53360	49804	74909	50193	65433	67358	grade 0 events	2474	2429	5329	2473	2520	4172
rejected events	47422	44034	39467	44161	38657	53981		4%	4%	7%	4%	3%	6%
rejected %	88%	88%	52%	87%	59%	80%	grade 1 events	20	20	217	28	61	50
								0%	0%	0%	0%	0%	0%
							grade 2 events	1284	1185	10076	1211	5358	2899
								2%	2%	13%	2%	8%	4%
							grade 3 events	563	542	1422	626	2365	1434
								1%	1%	1%	1%	3%	2%
							grade 4 events	576	581	1287	562	2374	1319
								1%	1%	1%	1%	3%	1%
							grade 5 events	1811	1988	5454	2275	6319	2669
								3%	3%	7%	4%	9%	3%
							grade 6 events	1045	1040	17341	1161	14175	3554
								1%	2%	23%	2%	21%	5%
							grade 7 events	45587	42019	33783	41857	32261	51261
								85%	84%	45%	83%	49%	76%

## 2.2 Compared Parameters

Parameter	Planned	Actual	Parameter	Planned	Actual
Instrument	ACIS	ACIS	Obspar format version number	7	7
Detector	ACIS-235678	ACIS-235678	Obspar file type	PREDICTED	ACTUAL
Grating	NONE	NONE	Obspar update status	NONE	UPDATED
Data mode	FAINT	FAINT	Number of optional ACIS chips dropped	0	0
Observation mode	POINTING	POINTING	On-chip summing requested	N	N
[deg] Pointing RA	157.620085	157.6190063664878	Subarray requested	NONE	NONE
[deg] Pointing Dec	5.395629	5.422936046763667	Alternating exposures requested	N	N
[deg] Pointing Roll	61.408004	61.56471783651779	[s] Primary exposure time	0.000000	3.2
[mm] SIM focus pos	-0.684267	-0.6828225247311905			
[mm] SIM defocus	0	0.001444936568705701			
[mm] SIM translation stage pos	-190.132523	-190.1400660498719			
[mm] SIM translation stage offset	0	0.00754346686406393			
[s] Observation start time (MET)	128682747.184000	128681886.59797			
Observation start date	2002-01-29T09:11:23	2002-01-29T08:58:06			
[s] Observation end time (MET)	128691047.184000	128691900.33588			
Observation end date	2002-01-29T11:29:43	2002-01-29T11:45:00			
Read mode	TIMED	TIMED			

## 2.3 Aspect



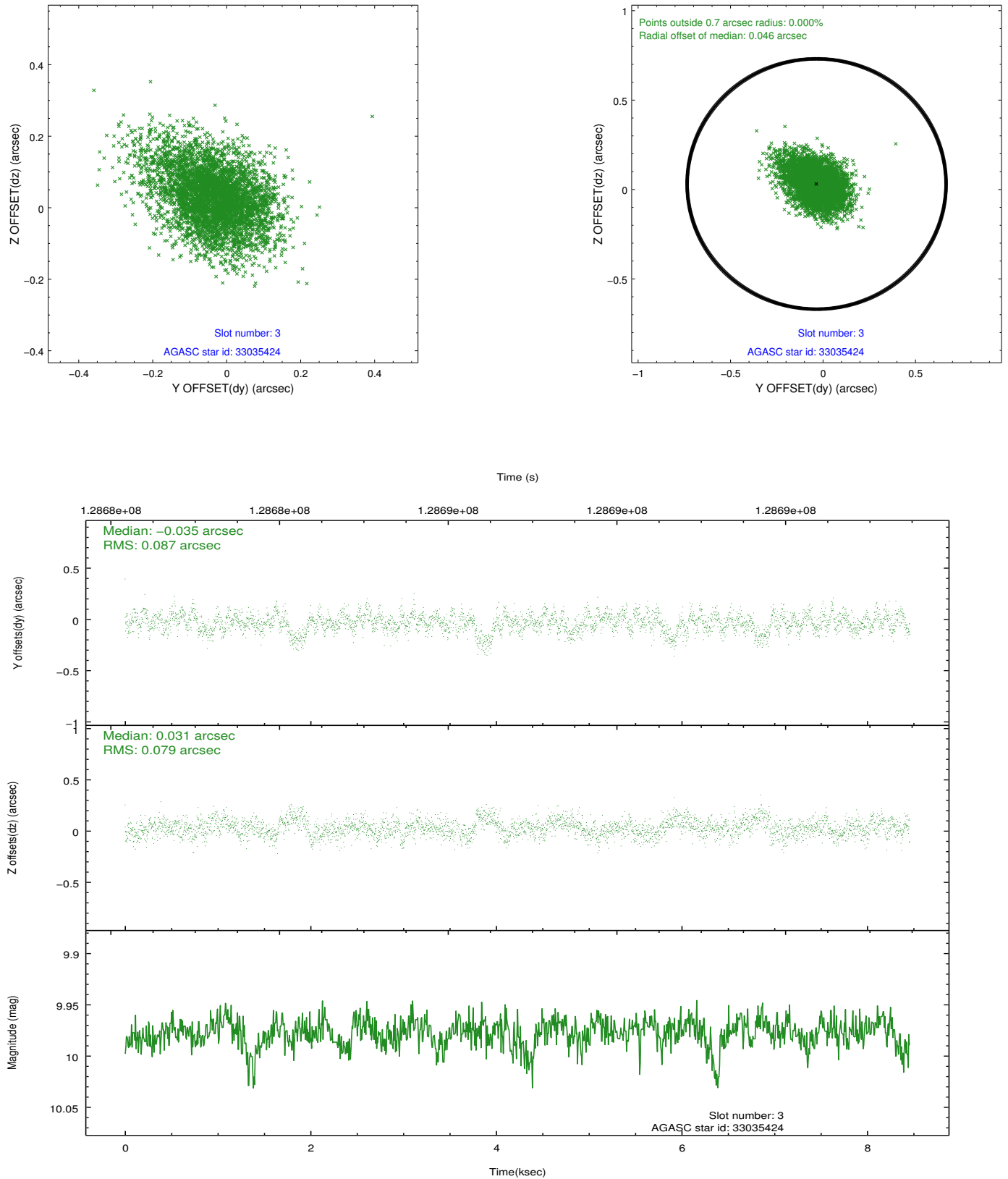


### Slot Statistics

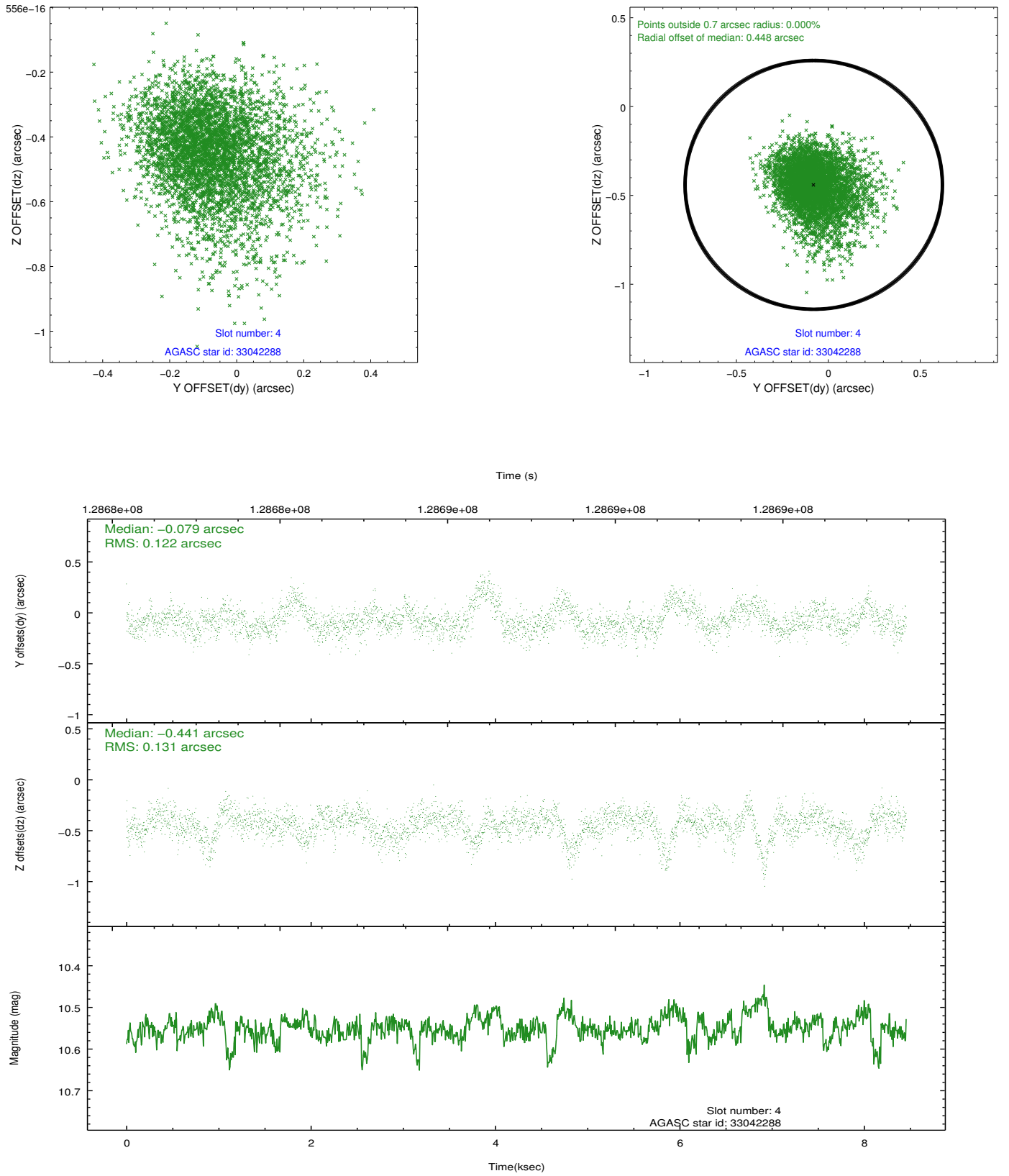
slot	status	id	mag	n_pts	med_dy	med_dz	dr1	dr2	ra	dec	mean_y	mean_z
0	FID	ACIS-S-2	7.12	2063	-0.019	0.005	0.006	0.010	0.000000	0.000000	-755.74	-1728.00
1	FID	ACIS-S-4	7.20	2062	-0.023	0.008	0.005	0.010	0.000000	0.000000	2157.23	179.83
2	FID	ACIS-S-5	7.24	2064	0.011	-0.004	0.006	0.011	0.000000	0.000000	-1807.72	174.21
3	GUIDE	33035424	9.98	4078	-0.035	0.031	0.123	0.209	157.358260	5.687209	473.88	1325.61
4	GUIDE	33042288	10.55	4125	-0.079	-0.441	0.184	0.324	157.496724	5.710362	784.38	929.79
5	GUIDE	33555848	10.01	4116	0.153	0.230	0.125	0.197	157.715192	4.895753	-1415.31	-1160.95
6	GUIDE	33557464	8.29	4055	0.082	0.169	0.078	0.126	157.961805	4.935650	-866.18	-1869.08
7	GUIDE	33031184	7.02	4126	-0.133	0.026	0.070	0.113	157.337986	6.256454	2238.58	2369.14

## 2.4 Star Slots

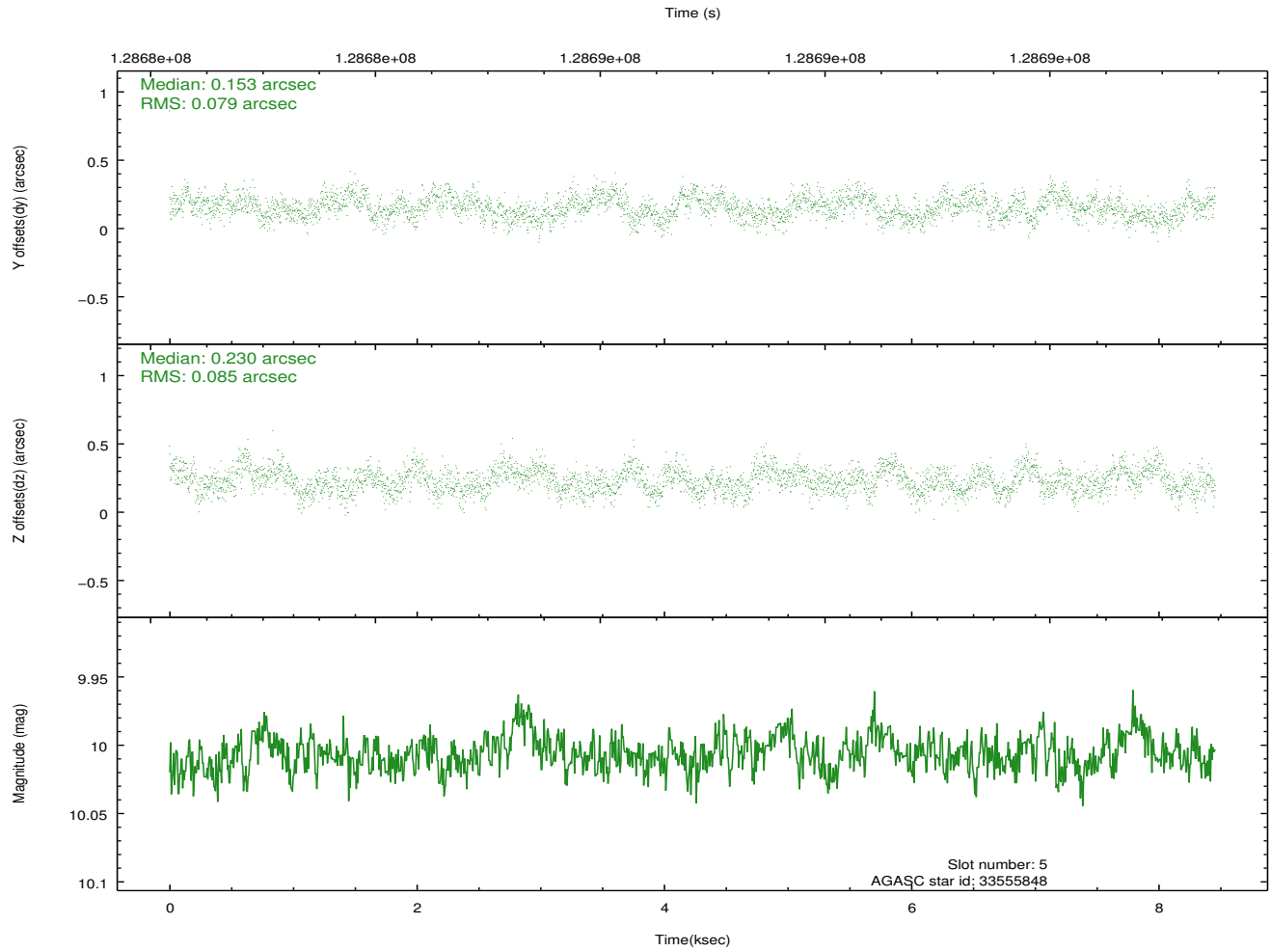
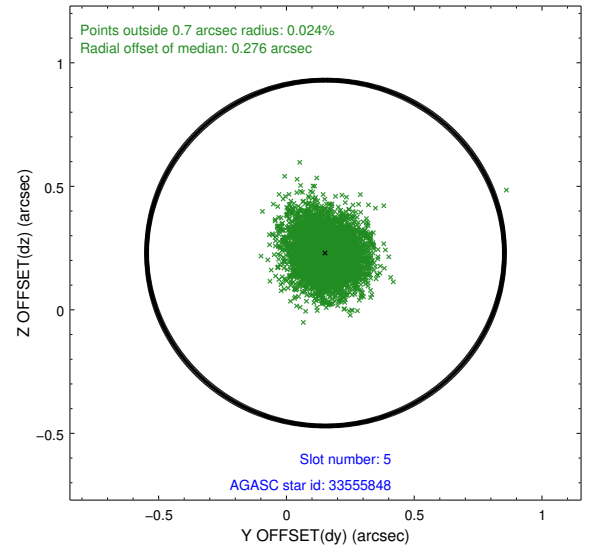
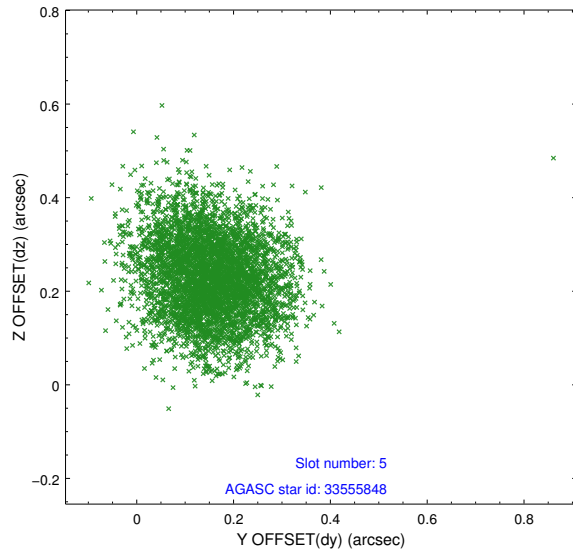
### 2.4.1 Slot 3



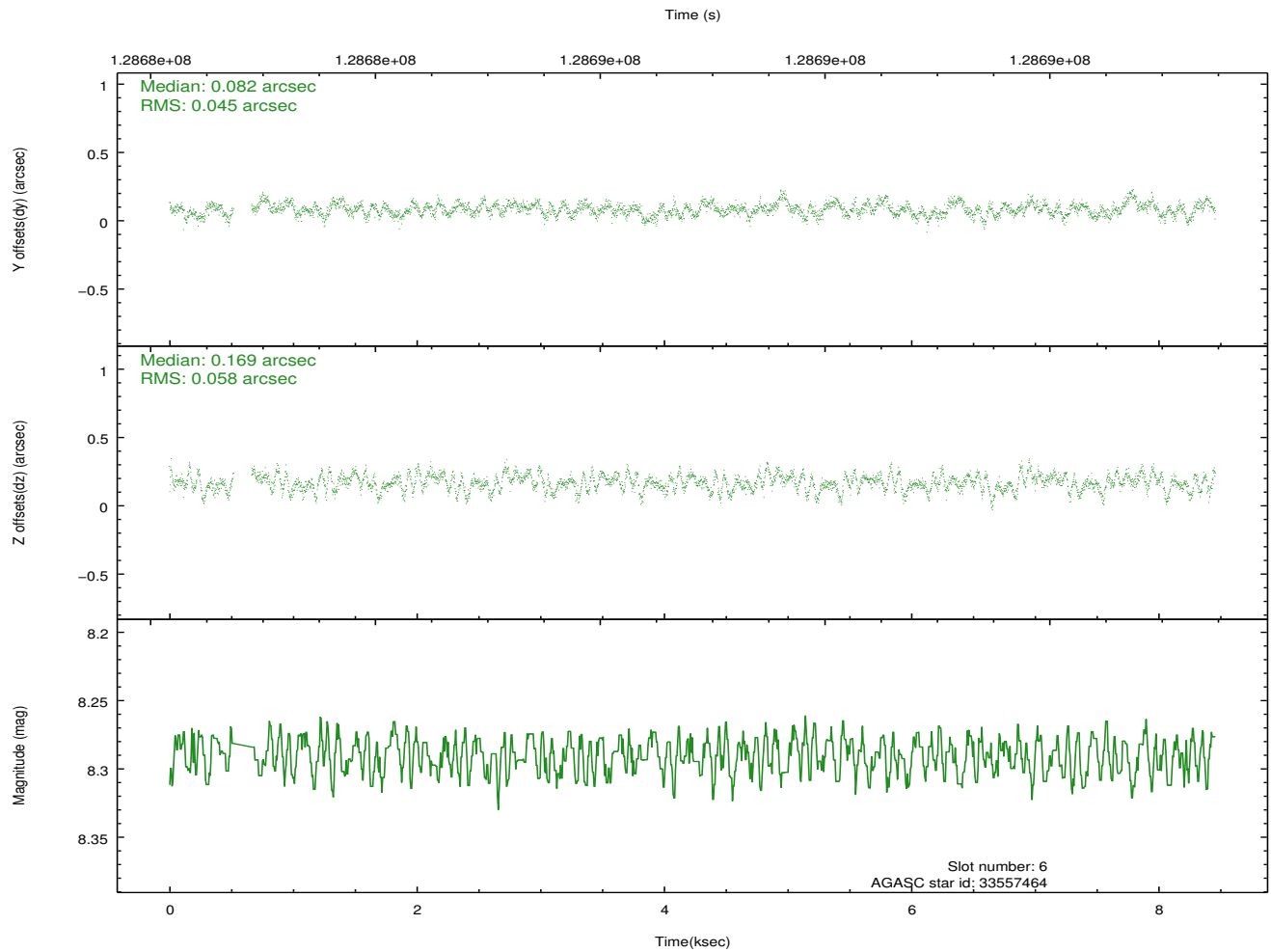
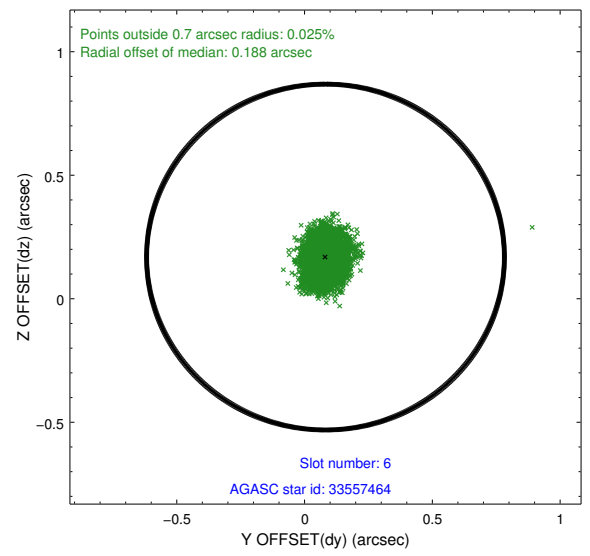
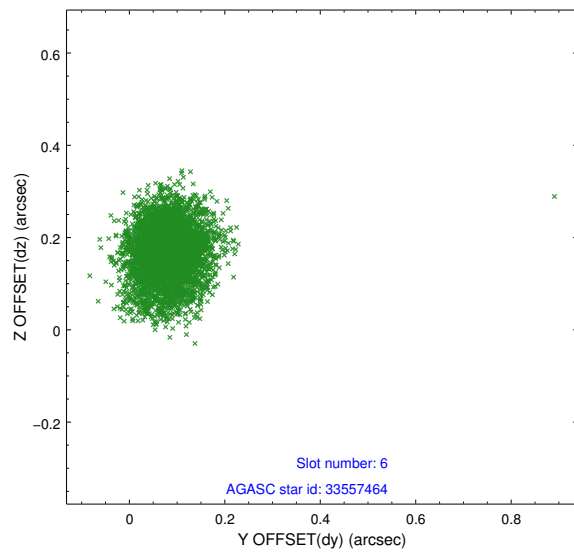
## 2.4.2 Slot 4



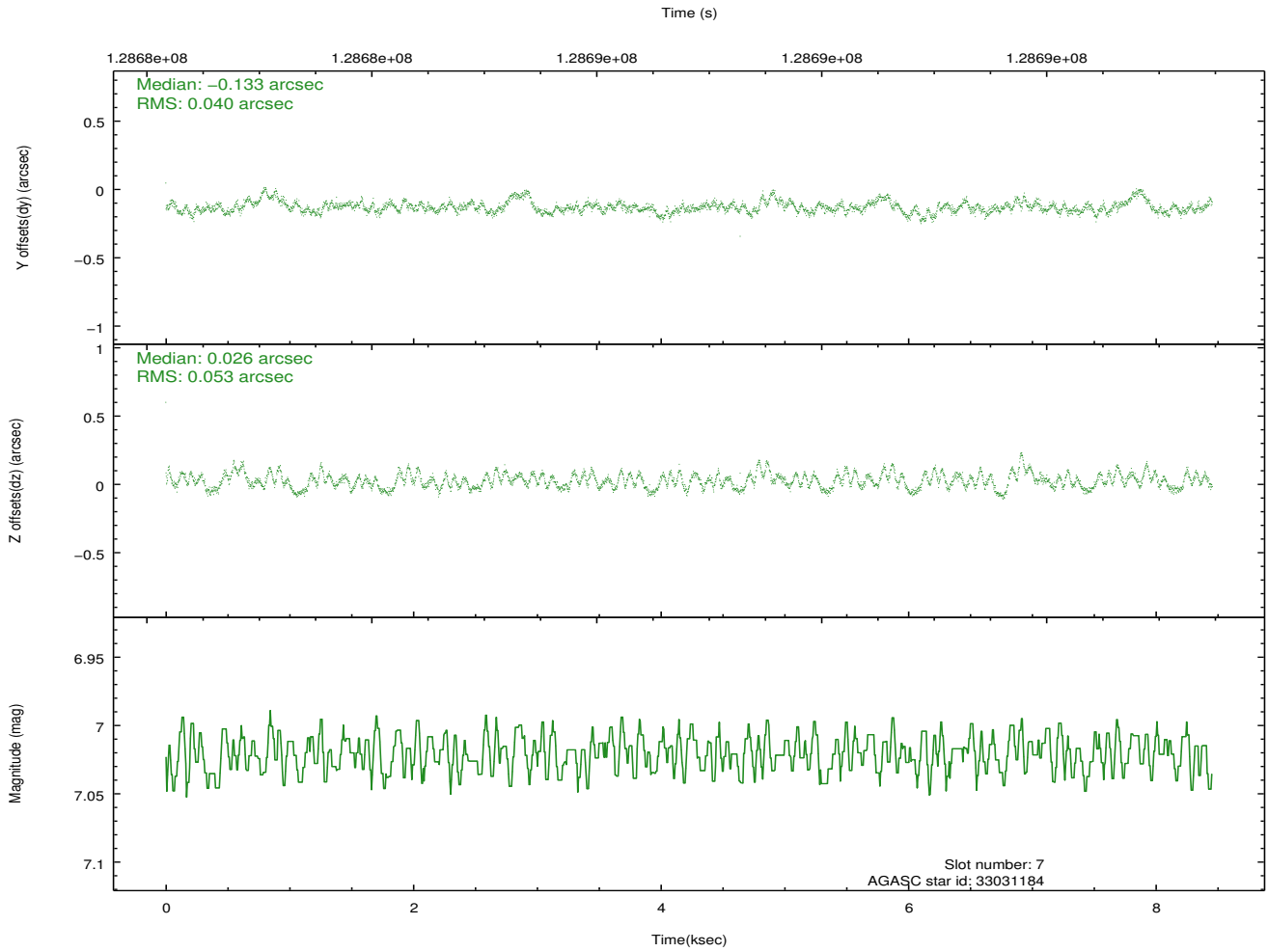
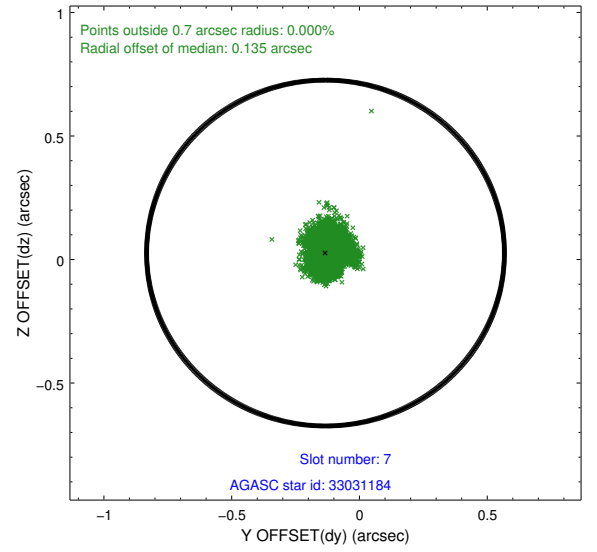
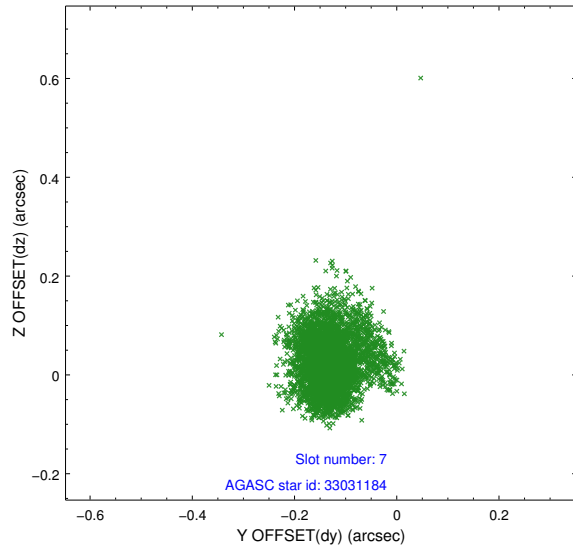
### 2.4.3 Slot 5



## 2.4.4 Slot 6

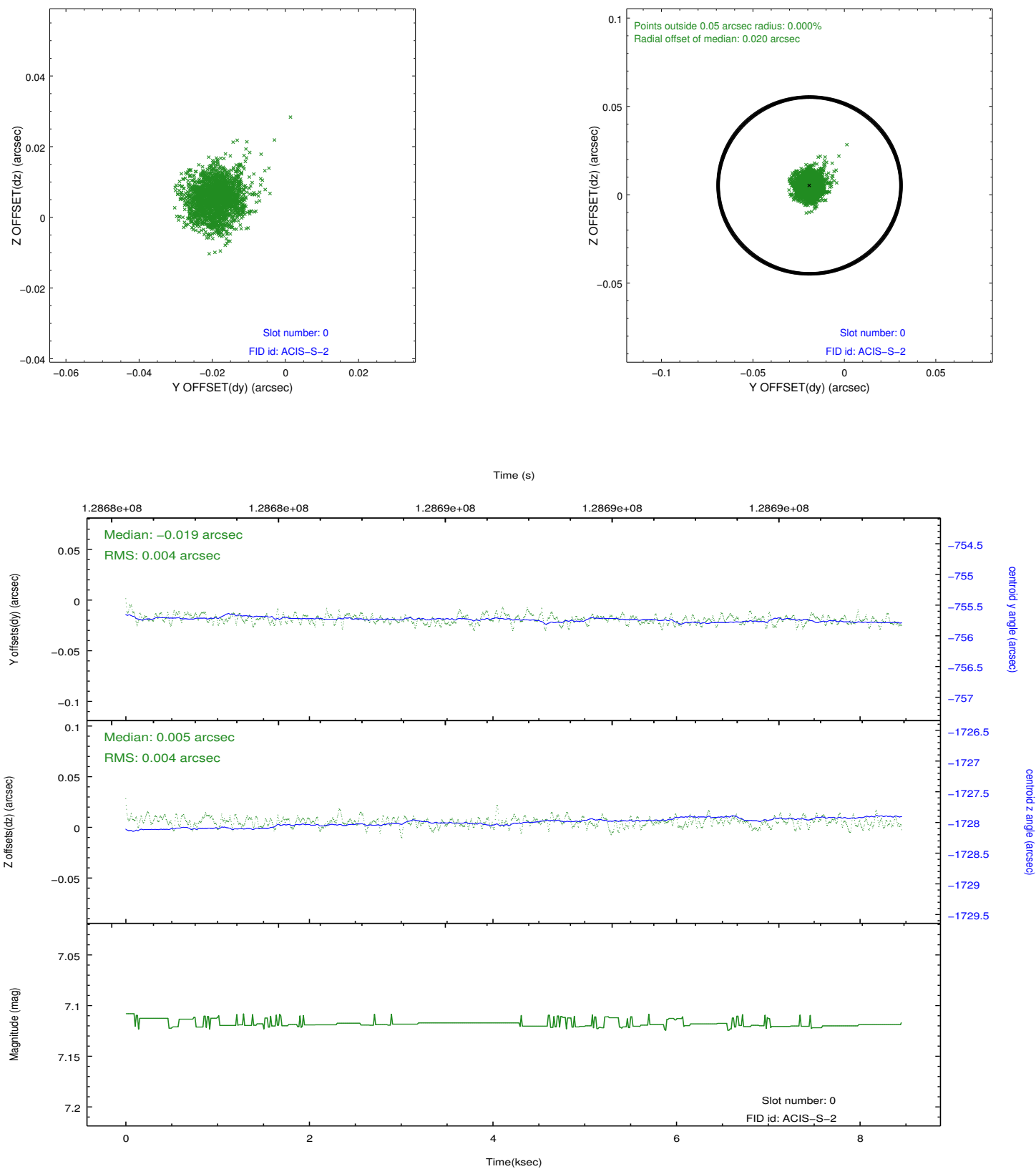


## 2.4.5 Slot 7

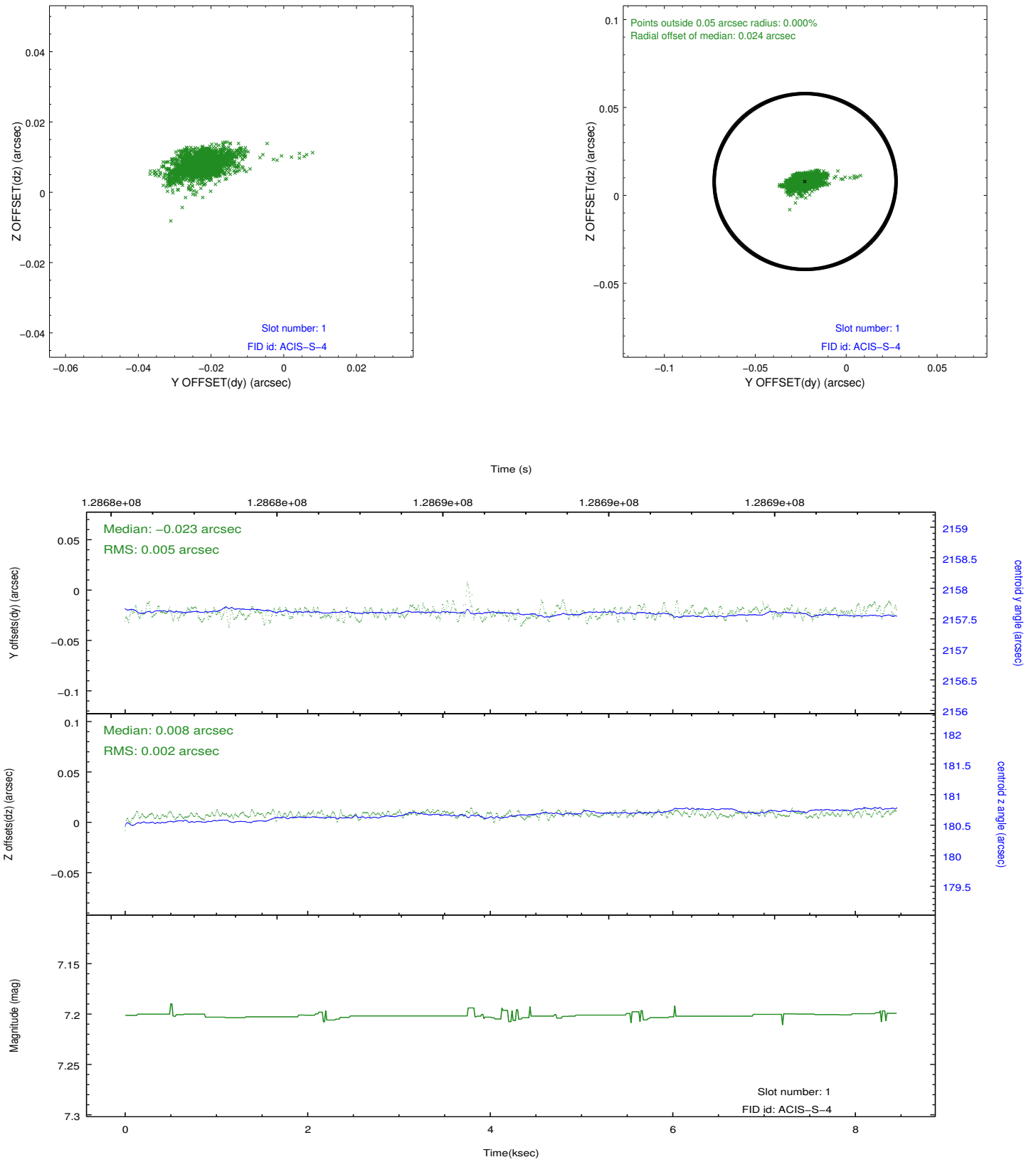


## 2.5 FID Slots

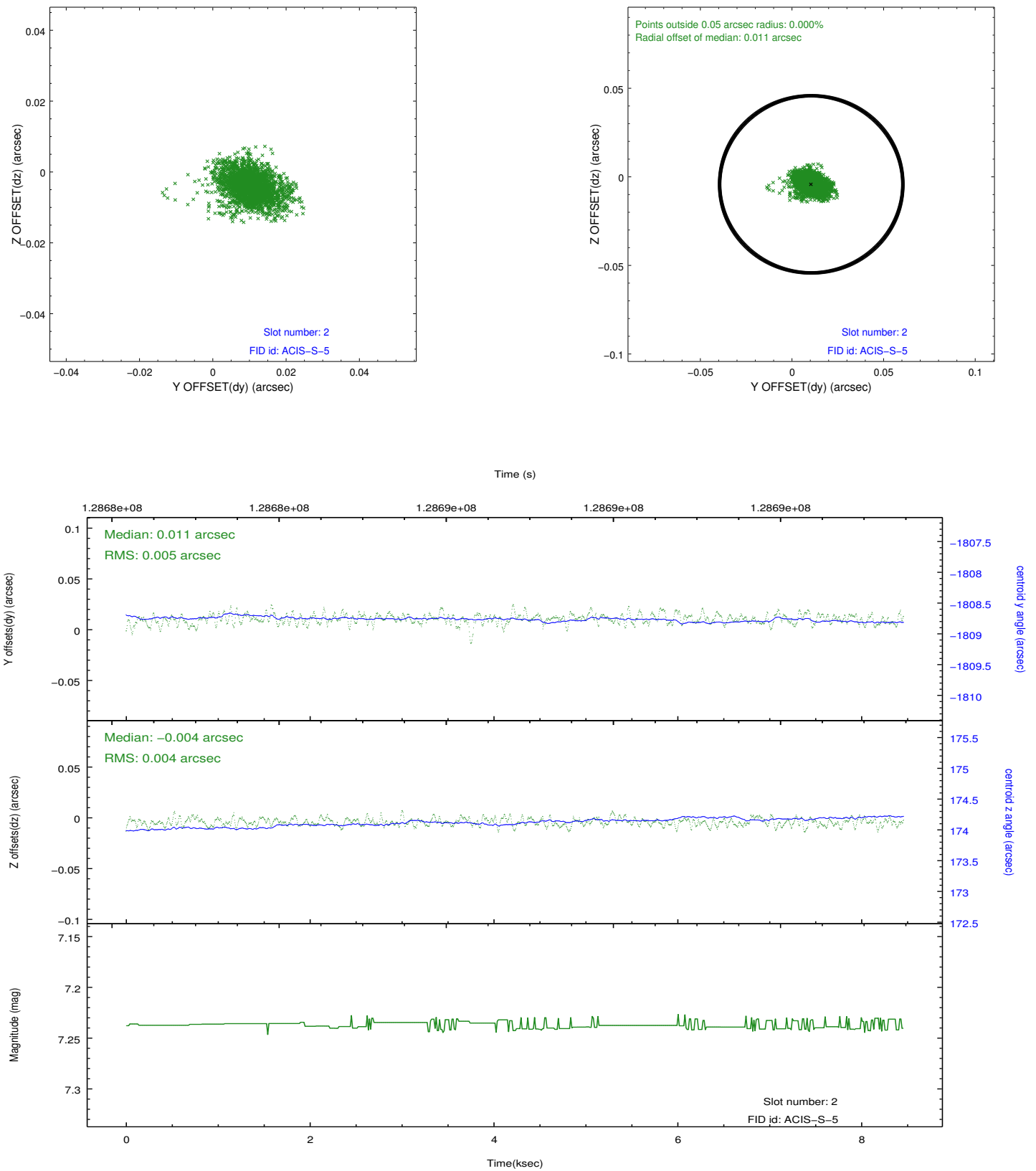
### 2.5.1 Slot 0



## 2.5.2 Slot 1



### 2.5.3 Slot 2



## **A Summary**

### **A.1 Status**

V&V Scientist	Jen Lauer
V&V Date (YYYY-MM-DD)	2012.10.03
V&V Edition	1
V&V Disposition and Status	OK
V&V Charge Time	8.057

### **A.2 Comments**