

V&V Reference Report

L2 ASCDS Version : 7.6.8.1

Observation 3357 - L2 Version 001
Chandra X-Ray Center

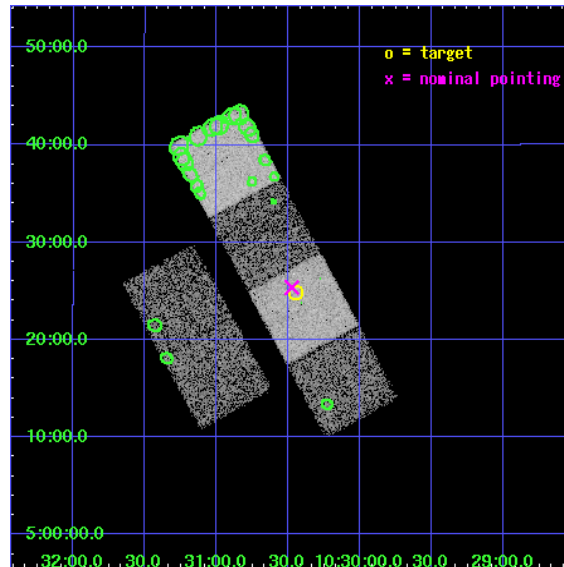
L2 Processing Date : Aug 29 2006

Contents

1	Front	2
2	OBI	3
2.1	OBI	3
2.1.1	Images	3
2.1.2	Bias	3
2.1.3	Parameters	4
2.1.4	Events	4
2.2	Compared Parameters	5
2.3	Aspect	6
2.4	Star Slots	9
2.4.1	Slot 3	9
2.4.2	Slot 4	10
2.4.3	Slot 5	11
2.4.4	Slot 6	12
2.4.5	Slot 7	13
2.5	FID Slots	14
2.5.1	Slot 0	14
2.5.2	Slot 1	15
2.5.3	Slot 2	16
3	Point Sources	17
A	Summary	18
A.1	Status	18
A.2	Comments	18

1 Front

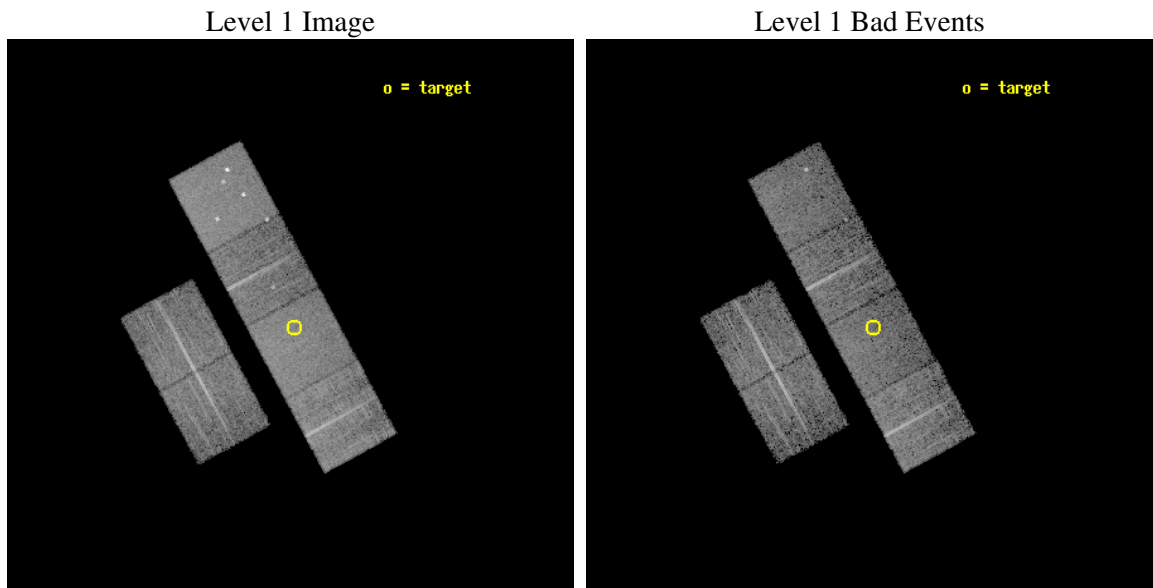
seq_num	700605
obs_id	3357
title	CHANDRA OBSERVATIONS OF THE THREE HIGHEST REDSHIFT QUASARS FROM THE SDSS
observer	Prof. William Brandt
object	SDSSP J103027+052455
dtcycle	0
cycle	P
ra_targ	157.612917
dec_targ	5.415278
ra_nom	157.61900636649
dec_nom	5.4229360467637
roll_nom	61.564717836518
revision	2
ontime	8054.4000075012
livetime	7952.4103448288
ontime2	8054.4000075012
ontime3	8054.4000075012
ontime5	8054.4000075012
ontime6	8054.4000075012
ontime7	8054.4000075012
ontime8	8051.1590372473
l2events	74088



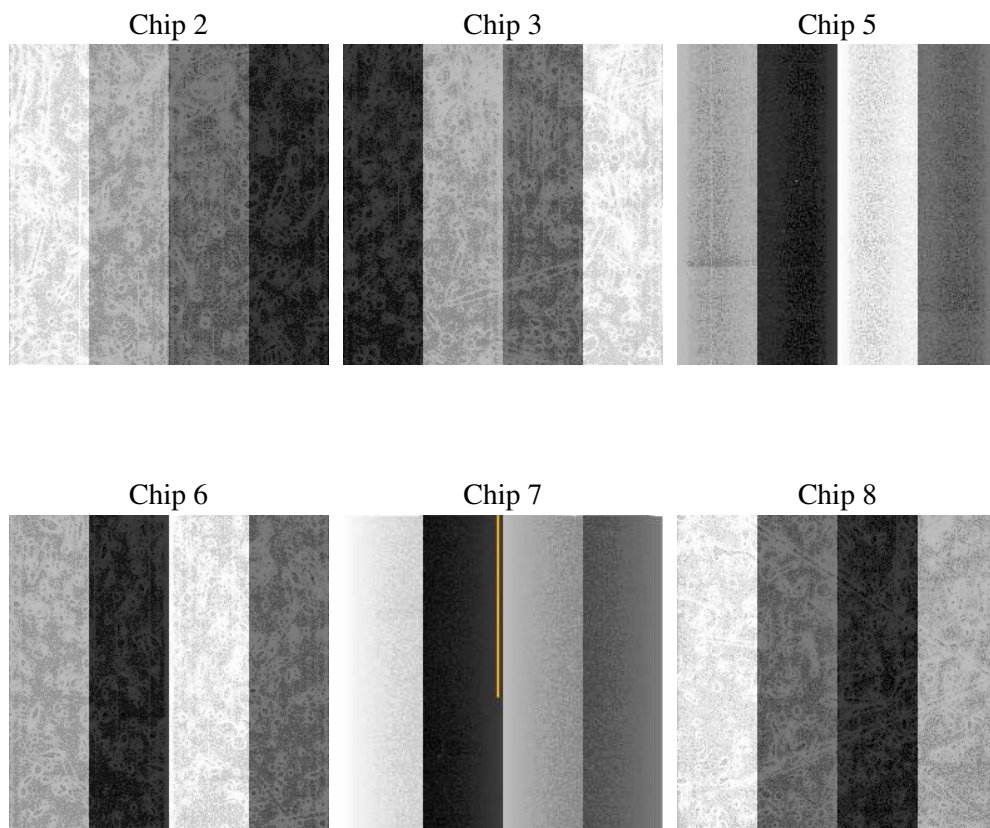
2 OBI

2.1 OBI

2.1.1 Images



2.1.2 Bias



2.1.3 Parameters

obi_num	2
ascdsver	7.6.8.1
caldsver	3.2.3
date	2006-08-29T16:49:31
revision	2

sched_exp_time	8300.000000
ontime	8060.3764545768
ontime2	8060.3764545768
ontime3	8060.3764545768
ontime5	8060.3764545768
ontime6	8060.3764545768
ontime7	8060.3764545768
ontime8	8057.1353946477
l1events	361057

2.1.4 Events

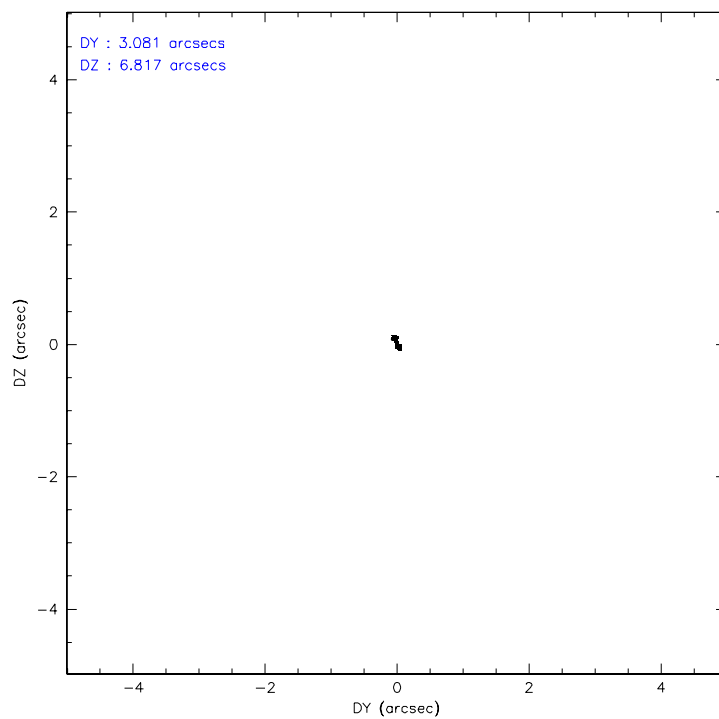
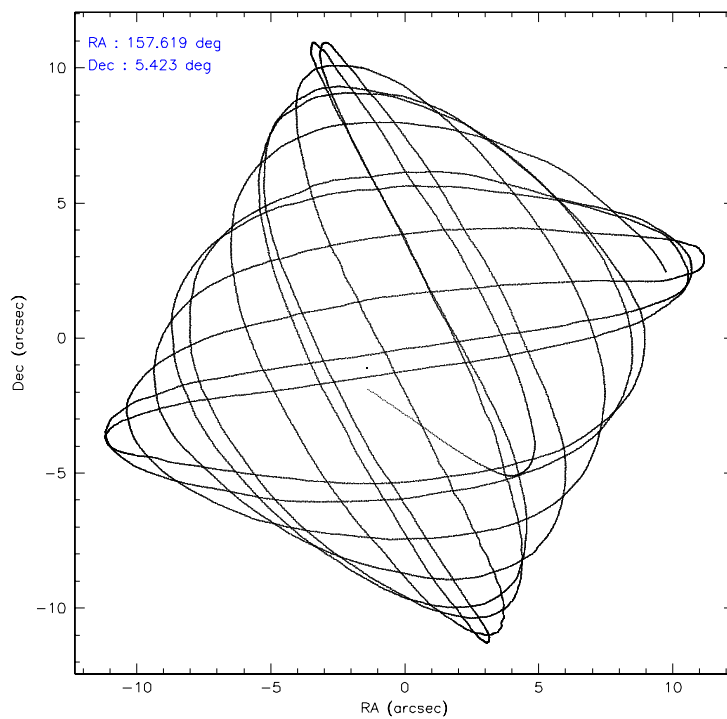
	ccd 2	ccd 3	ccd 5	ccd 6	ccd 7	ccd 8
level 1 events	53360	49804	74909	50193	65433	67358
rejected events	47422	44036	40768	44166	40705	53982
rejected %	88%	88%	54%	87%	62%	80%

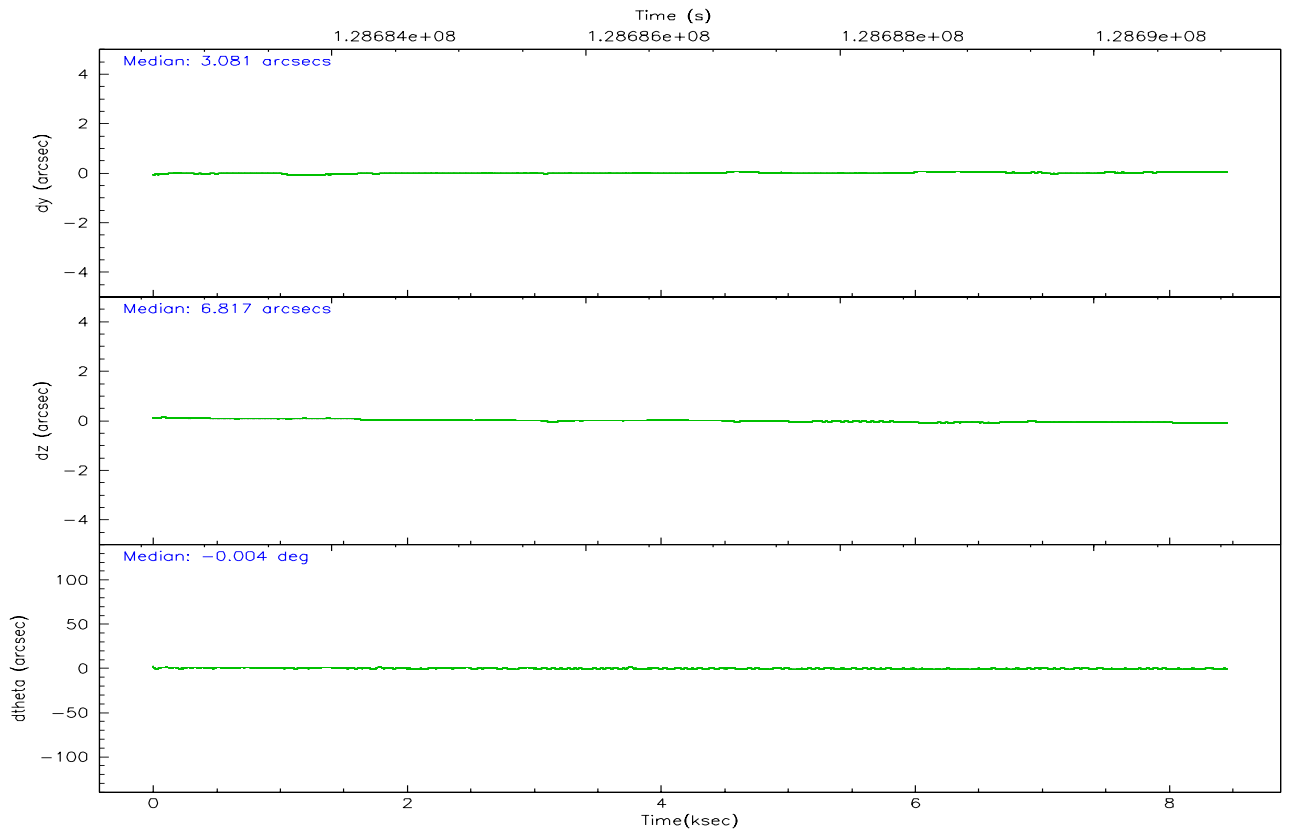
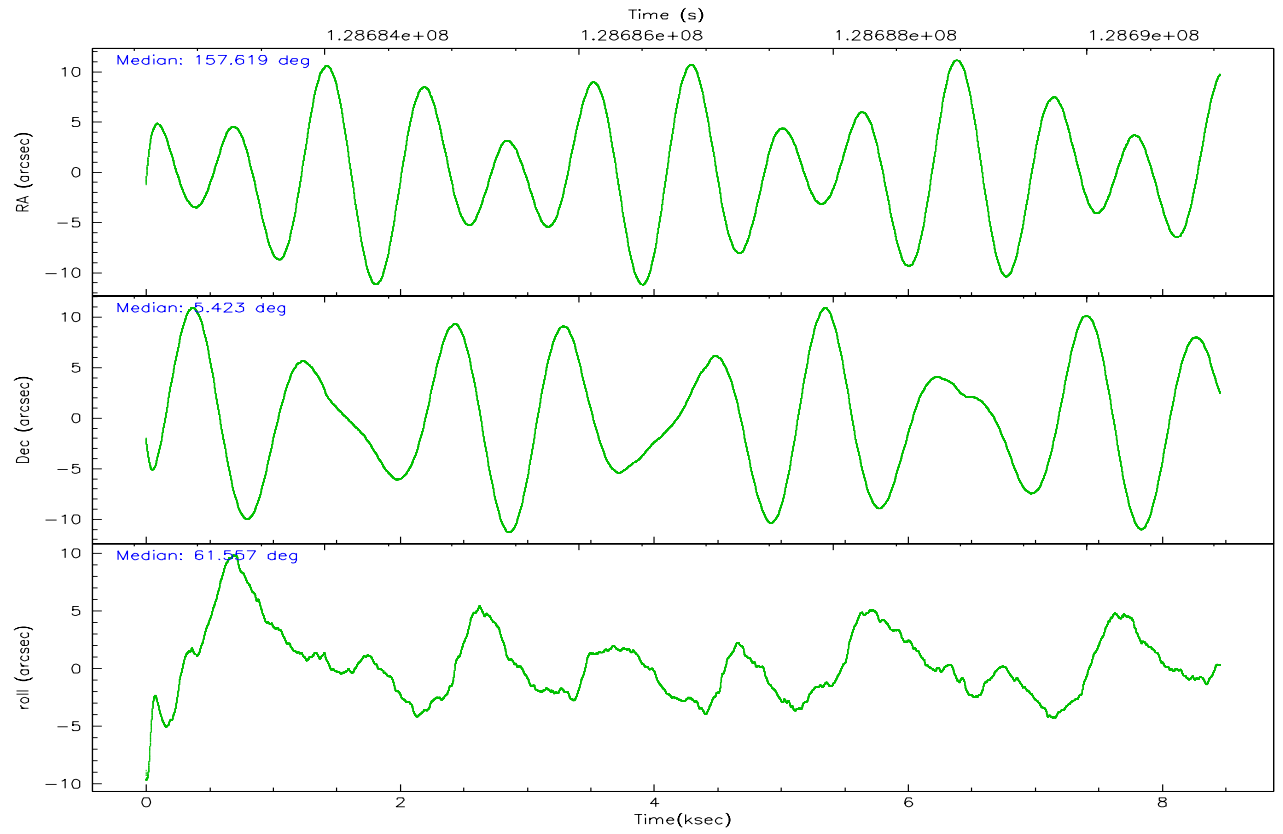
	ccd 2	ccd 3	ccd 5	ccd 6	ccd 7	ccd 8
grade 0 events	2474	2429	4504	2473	1488	4172
	4%	4%	6%	4%	2%	6%
grade 1 events	20	20	178	28	41	50
	0%	0%	0%	0%	0%	0%
grade 2 events	1284	1185	10177	1211	6167	2899
	2%	2%	13%	2%	9%	4%
grade 3 events	563	542	782	626	1291	1434
	1%	1%	1%	1%	1%	2%
grade 4 events	576	581	685	562	1228	1319
	1%	1%	0%	1%	1%	1%
grade 5 events	1811	1988	3520	2274	4422	2668
	3%	3%	4%	4%	6%	3%
grade 6 events	1045	1040	18018	1161	14570	3555
	1%	2%	24%	2%	22%	5%
grade 7 events	45587	42019	37045	41858	36226	51261
	85%	84%	49%	83%	55%	76%

2.2 Compared Parameters

Parameter	Planned	Actual	Parameter	Planned	Actual
Instrument	ACIS	ACIS	Obspar format version number	6	6
Detector	ACIS-235678	ACIS-235678	Obspar file type	PREDICTED	ACTUAL
Grating	NONE	NONE	Obspar update status	NONE	UPDATED
Data mode	FAINT	FAINT	On-chip summing requested	N	N
Observation mode	POINTING	POINTING	Subarray requested	NONE	NONE
Pointing RA	157.620085	157.6190063664879	Alternating exposures requested	N	N
Pointing Dec	5.395629	5.42293604676369	Primary exposure time	0.000000	3.2
Pointing Roll	61.408004	61.56471783651775			
SIM focus pos (mm)	-0.684267	-0.6828225247311905			
SIM defocus (mm)	0	0.001444936568705701			
SIM translation stage pos (mm)	-190.132523	-190.1400660498719			
SIM translation stage offset (mm)	0	0.00754346686406393			
Observation start time	128682747.184000	128681886.59797			
Observation start date	2002-01-29T09:11:23	2002-01-29T08:58:06			
Observation end time	128691047.184000	128691900.33588			
Observation end date	2002-01-29T11:29:43	2002-01-29T11:45:00			
Read mode	TIMED	TIMED			

2.3 Aspect



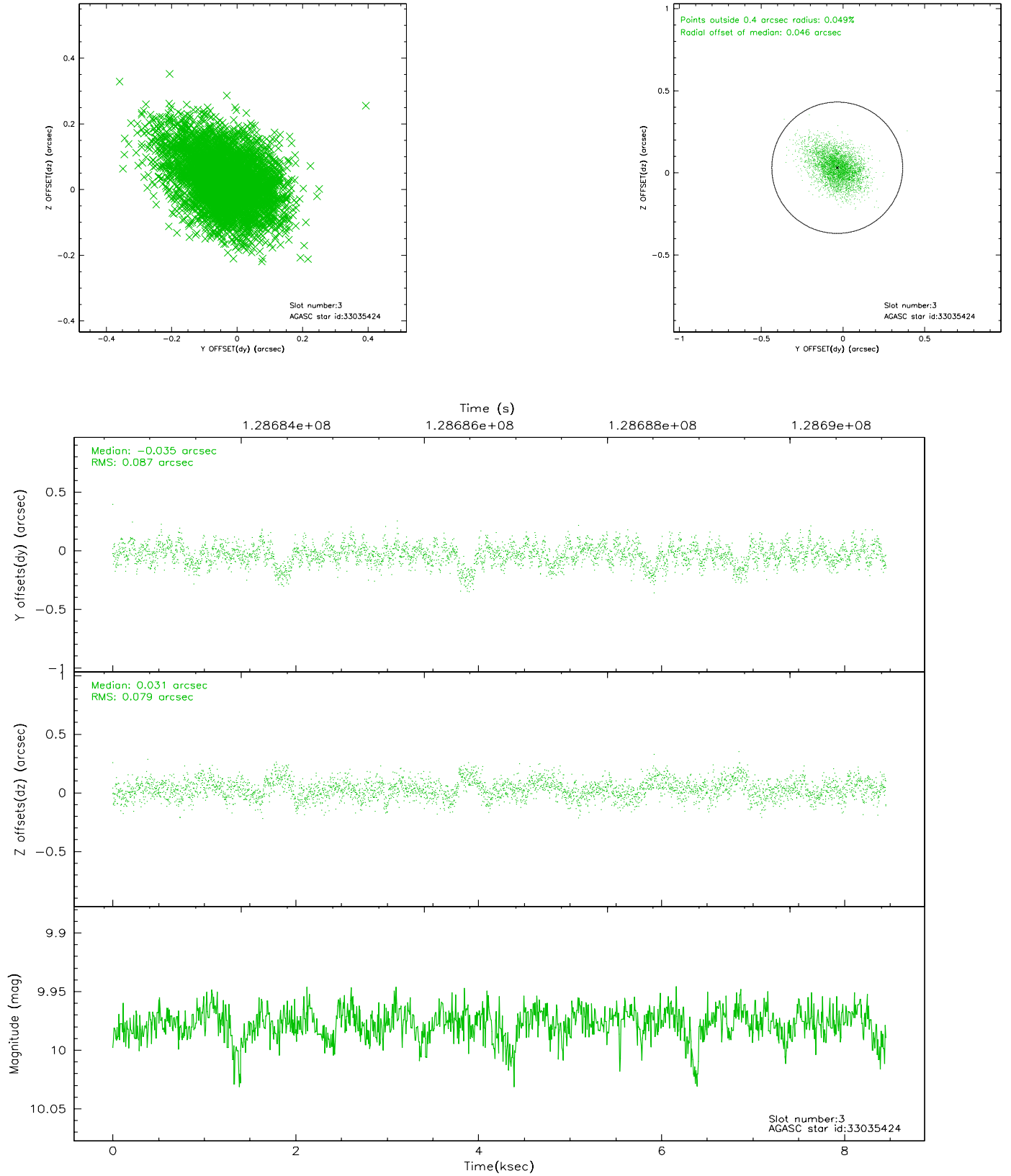


Slot Statistics

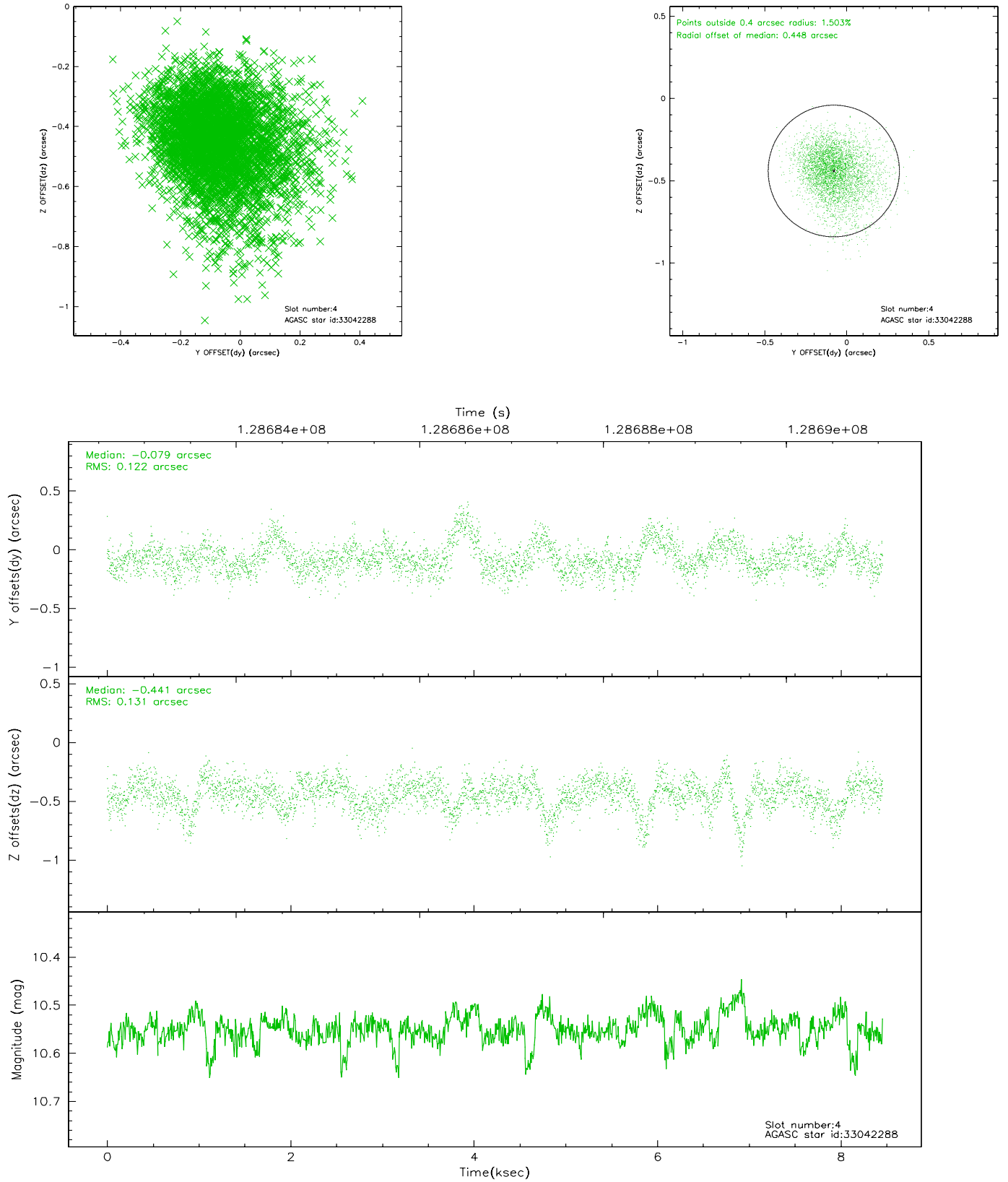
slot	status	id	mag	n_pts	med_dy	med_dz	dr1	dr2	ra	dec	mean_y	mean_z
0	FID	ACIS-S-2	7.12	2063	-0.008	0.028	0.006	0.010	0.000000	0.000000	-755.72	-1727.96
1	FID	ACIS-S-4	7.20	2062	-0.065	-0.004	0.005	0.009	0.000000	0.000000	2157.19	179.84
2	FID	ACIS-S-5	7.24	2064	0.041	-0.016	0.006	0.010	0.000000	0.000000	-1807.69	174.21
3	GUIDE	33035424	9.98	4078	-0.035	0.031	0.123	0.209	157.358260	5.687209	473.88	1325.61
4	GUIDE	33042288	10.55	4125	-0.079	-0.441	0.184	0.324	157.496724	5.710362	784.38	929.79
5	GUIDE	33555848	10.01	4116	0.153	0.230	0.125	0.197	157.715192	4.895753	-1415.31	-1160.95
6	GUIDE	33557464	8.29	4055	0.082	0.169	0.078	0.126	157.961805	4.935650	-866.18	-1869.08
7	GUIDE	33031184	7.02	4126	-0.133	0.026	0.070	0.113	157.337986	6.256454	2238.58	2369.14

2.4 Star Slots

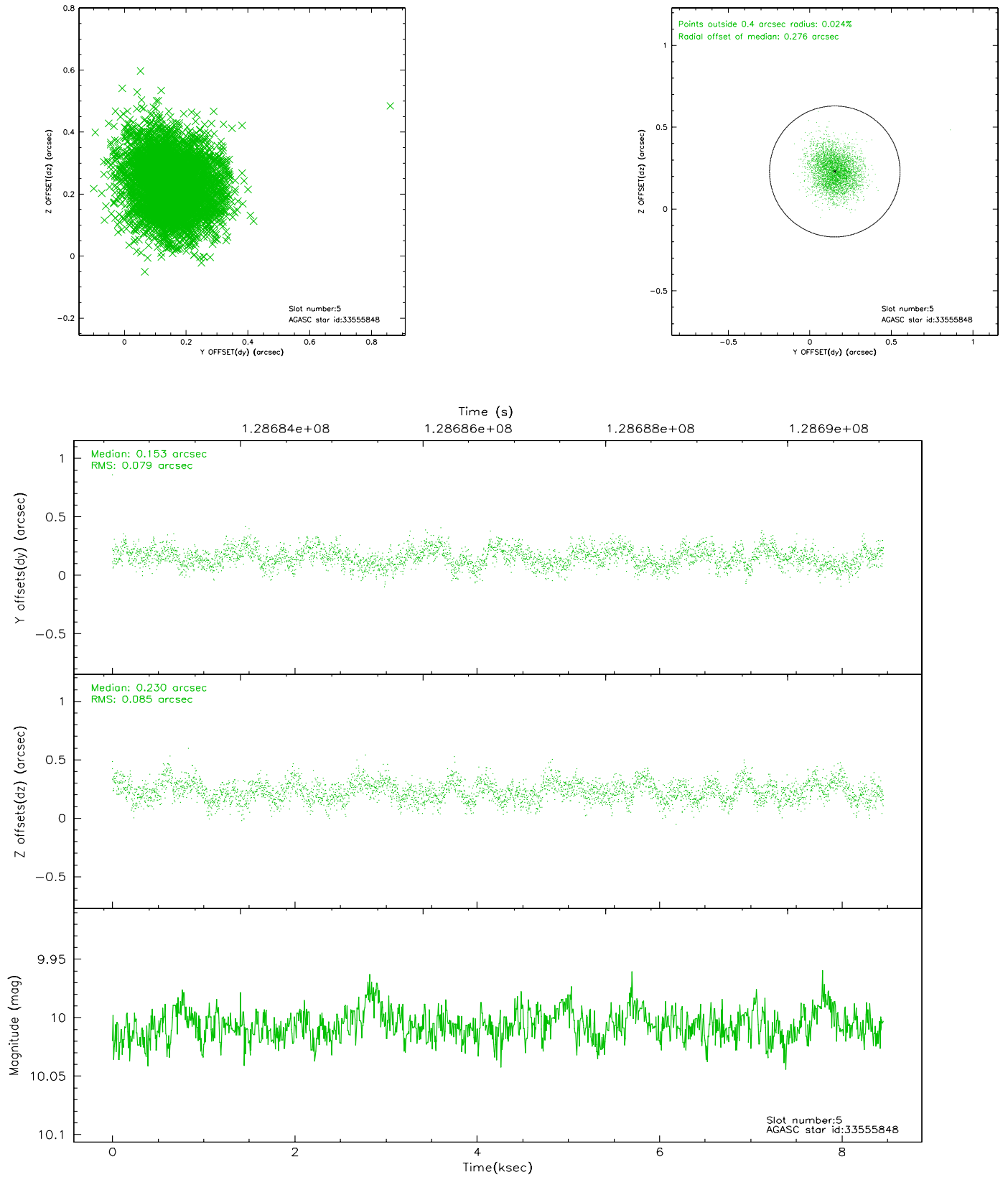
2.4.1 Slot 3



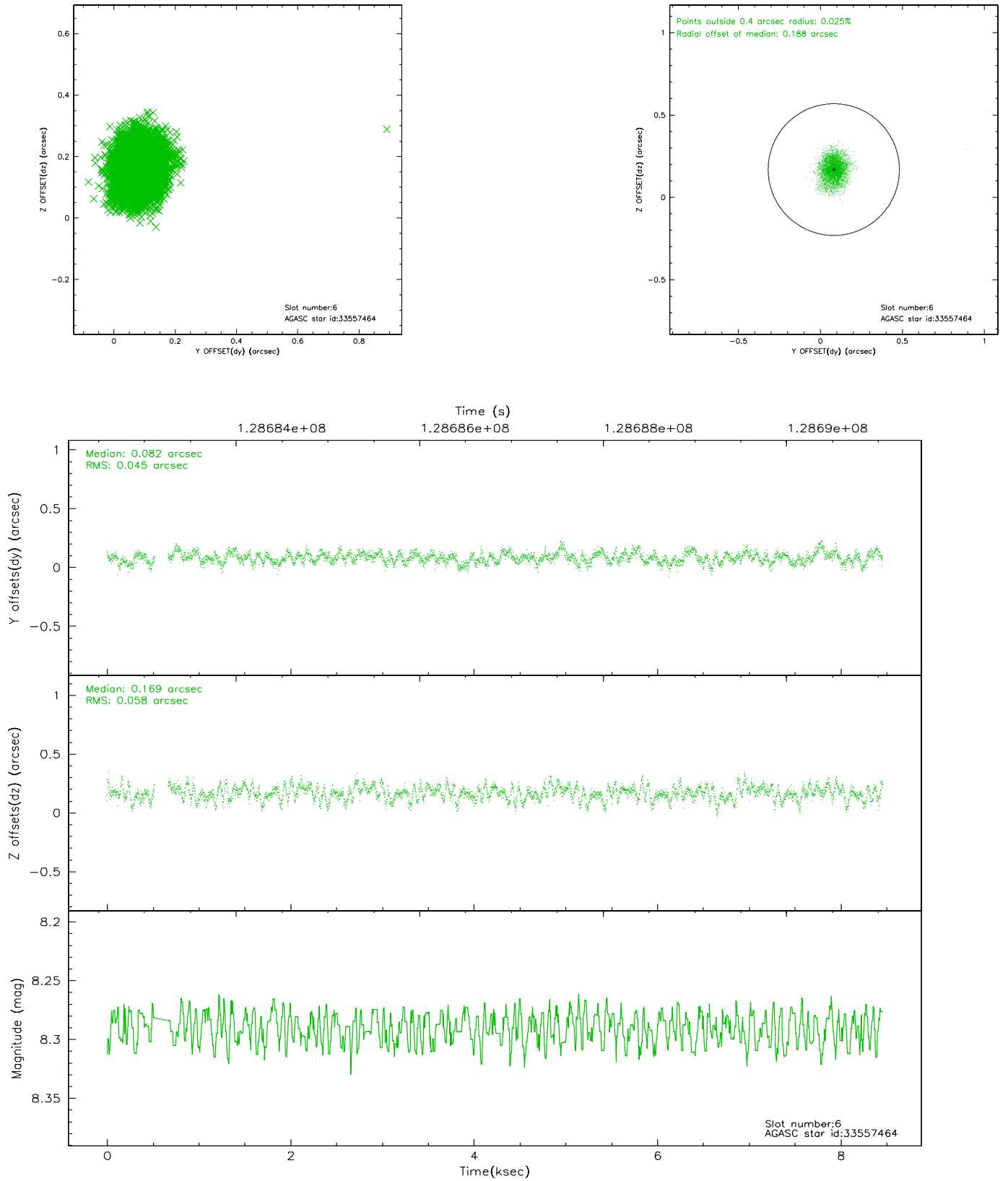
2.4.2 Slot 4



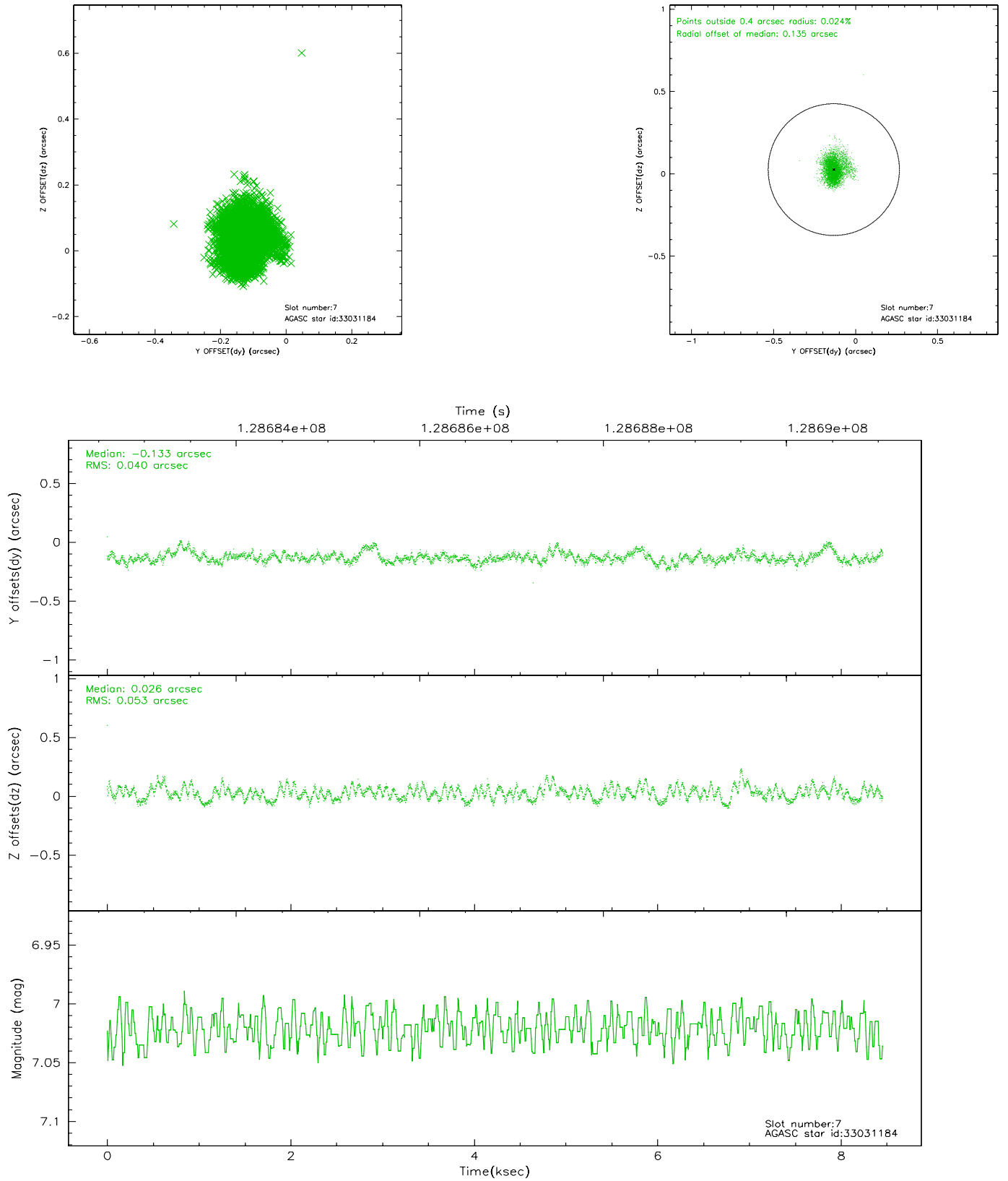
2.4.3 Slot 5



2.4.4 Slot 6

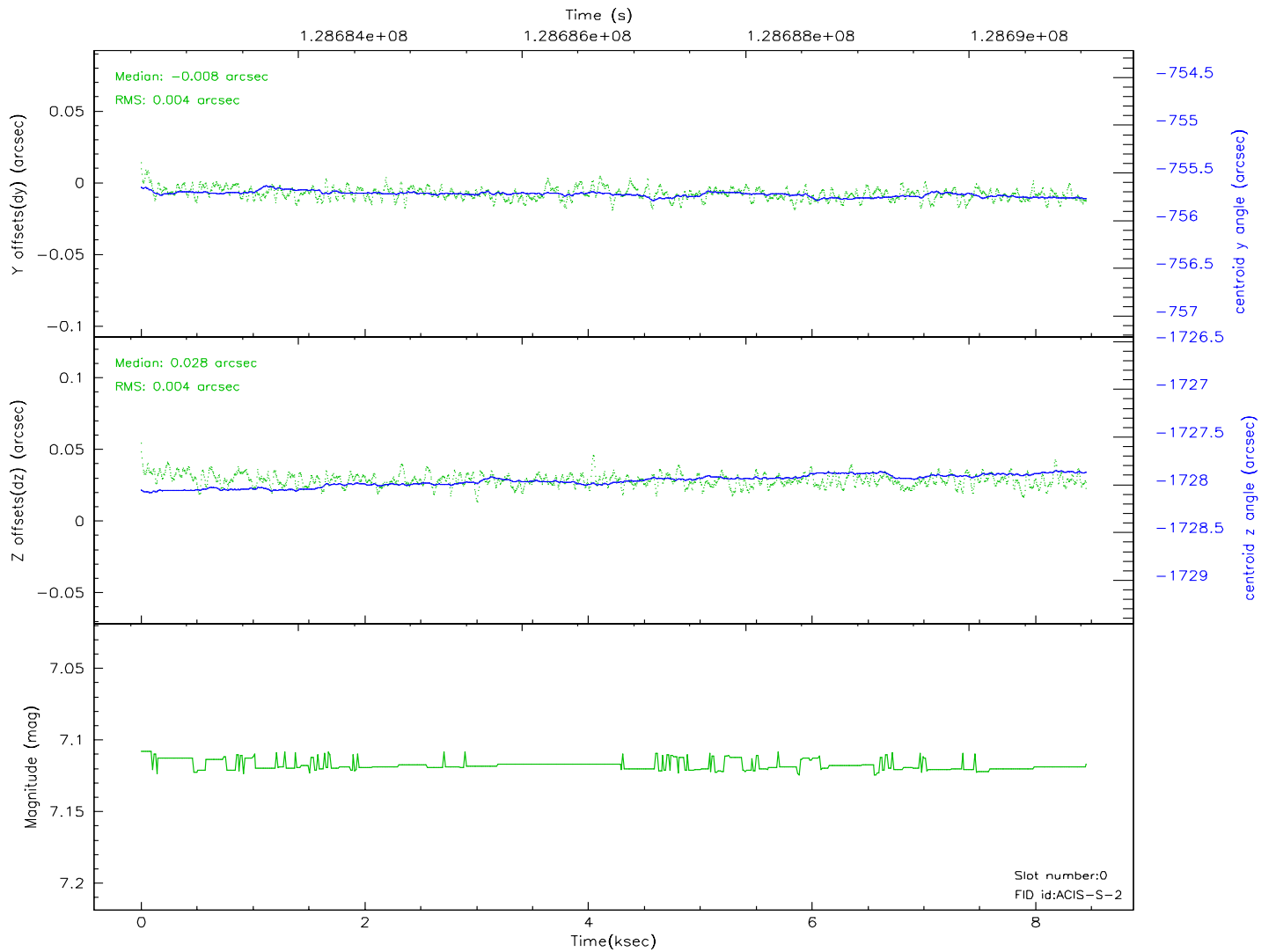
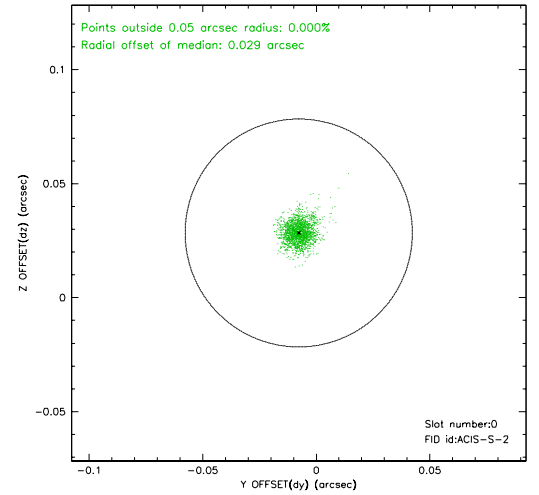
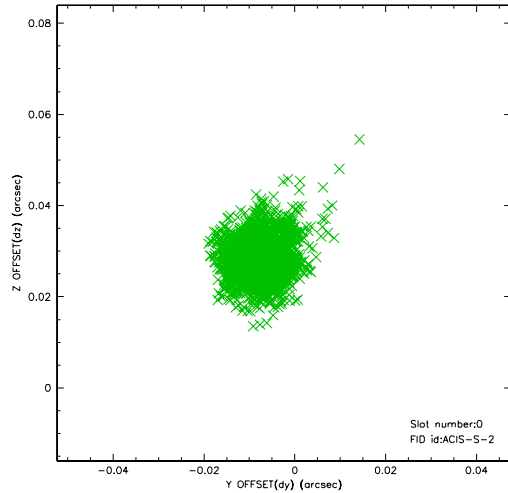


2.4.5 Slot 7

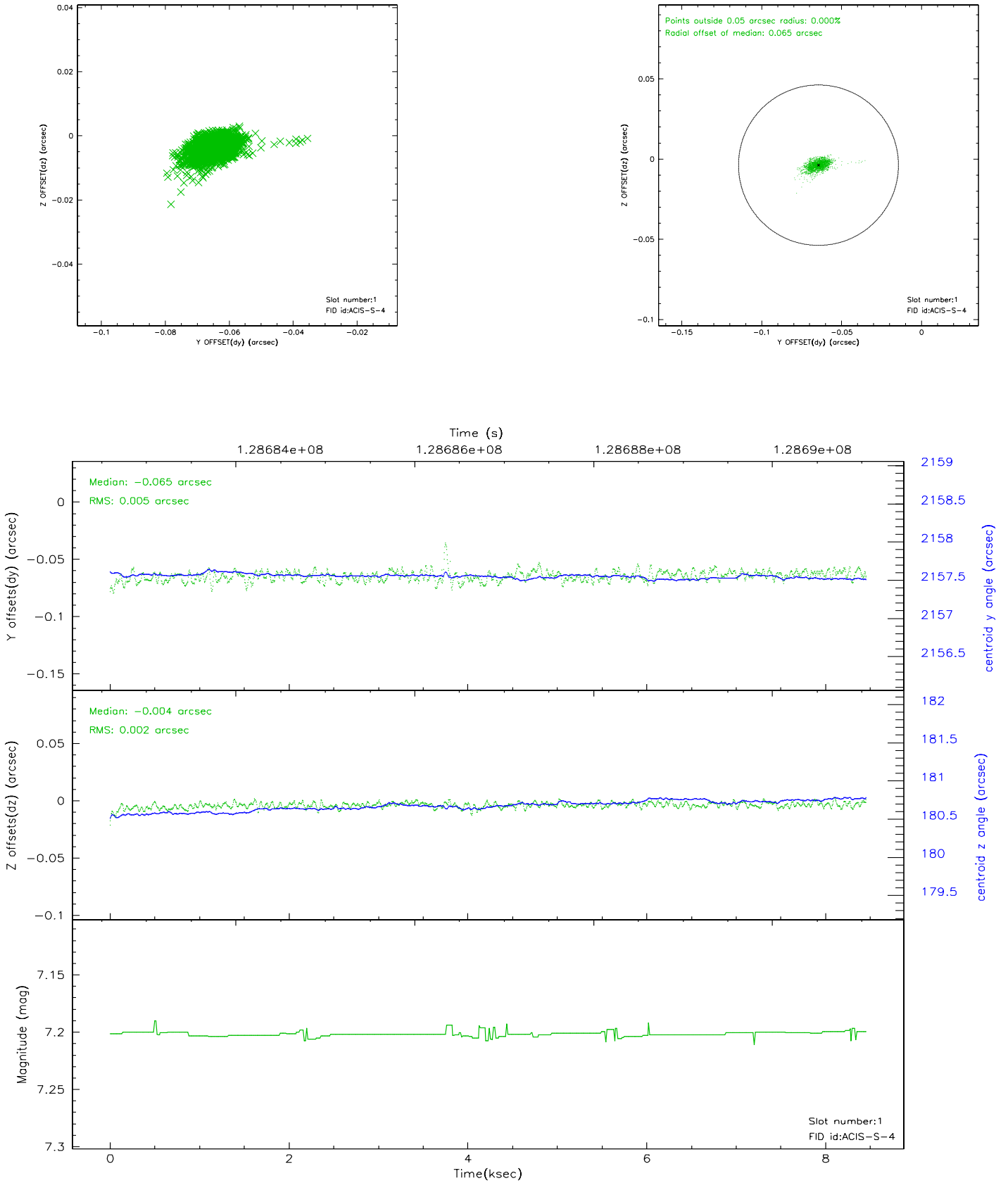


2.5 FID Slots

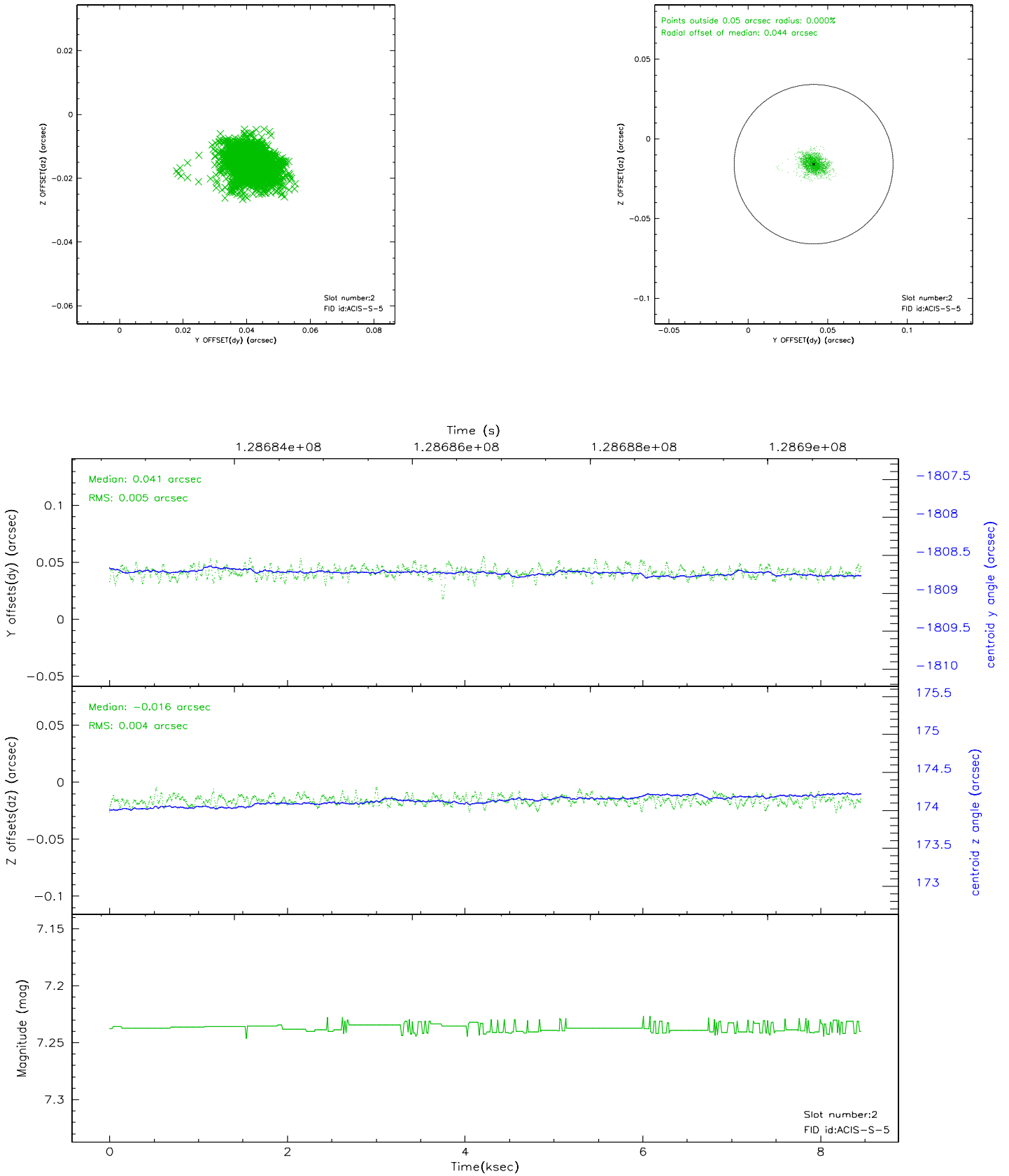
2.5.1 Slot 0



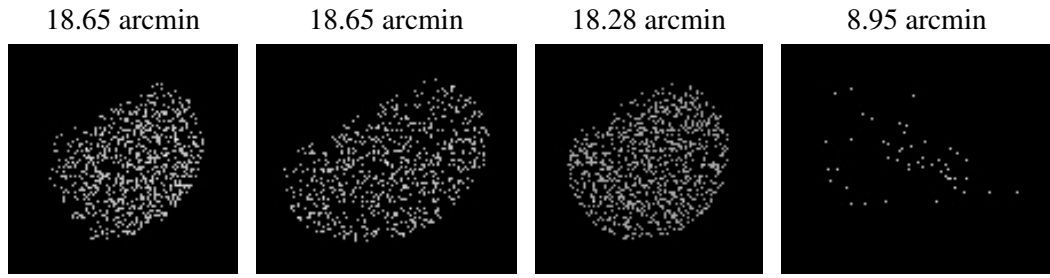
2.5.2 Slot 1



2.5.3 Slot 2



3 Point Sources



A Summary

A.1 Status

V&V Scientist	Beth Sundheim
V&V Date (YYYY-MM-DD)	2006.08.29
V&V Edition	1
V&V Disposition and Status	OK
V&V Charge Time	8.057

A.2 Comments