

# V&V Reference Report

## L2 ASCDS Version : 8.4.5

Observation 2339 - L2 Version 3  
Chandra X-Ray Center

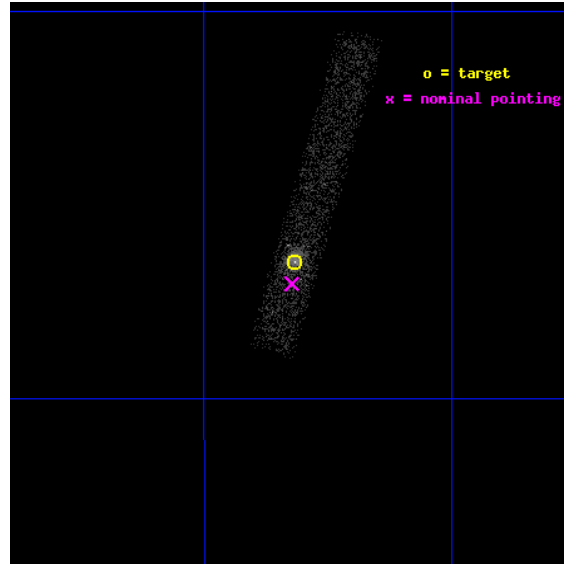
L2 Processing Date : Sep 7 2012

## Contents

<b>1</b>	<b>Front</b>	<b>2</b>
<b>2</b>	<b>OBI</b>	<b>3</b>
2.1	OBI . . . . .	3
2.1.1	Images . . . . .	3
2.1.2	Bias . . . . .	3
2.1.3	Parameters . . . . .	4
2.1.4	Events . . . . .	4
2.2	Compared Parameters . . . . .	5
2.3	Aspect . . . . .	6
2.4	Star Slots . . . . .	9
2.4.1	Slot 4 . . . . .	9
2.4.2	Slot 5 . . . . .	10
2.4.3	Slot 6 . . . . .	11
2.4.4	Slot 7 . . . . .	12
2.5	FID Slots . . . . .	13
2.5.1	Slot 0 . . . . .	13
2.5.2	Slot 1 . . . . .	14
2.5.3	Slot 2 . . . . .	15
<b>A</b>	<b>Summary</b>	<b>16</b>
A.1	Status . . . . .	16
A.2	Comments . . . . .	16

# 1 Front

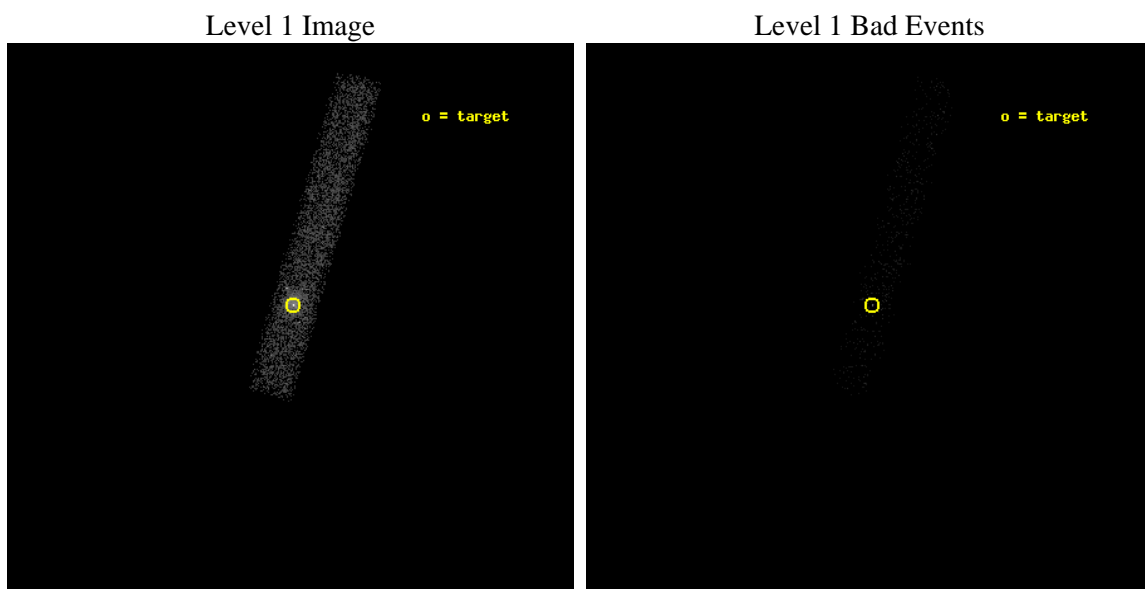
seq_num	700390	Sequence number
obs_id	2339	Observation id
title	STUDIES OF RADIO JETS AND THE NARROW LINE REGIONS OF ACTIVE GALAXIES	&#160
observer	Professor Andrew Wilson	Principal investigator
object	NGC1097	Source name
dtcycle	0	&#160
cycle	P	events from which exps? Prim/Second/Both
ra_targ	41.579583	Observer's specified target RA [deg]
dec_targ	-30.274444	Observer's specified target Dec [deg]
ra_nom	41.580724603003	Nominal RA [deg]
dec_nom	-30.284132473602	Nominal Dec [deg]
roll_nom	286.1942614758	Nominal Roll [deg]
revision	3	Processing version of data
ontime	6332.4000943601	Sum of GTIs [s]
livetime	5743.1526341013	Livetime [s]
ontime7	6332.4000943601	Sum of GTIs [s]
l2events	6728	Number of level 2 events



## 2 OBI

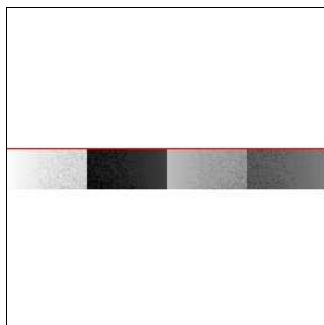
### 2.1 OBI

#### 2.1.1 Images



#### 2.1.2 Bias

Chip 7



### 2.1.3 Parameters

obi_num	0	Obi number	sched_exp_time	5500.000000	[s] Scheduled observation exposure time
ascdsver	8.4.5	Processing system revision	ontime	6332.4000943601	Sum of GTIs [s]
caldsver	4.5.1.1	&#160	ontime7	6332.4000943601	Sum of GTIs [s]
date	2012-09-07T05:02:54	Date and time of file creation	l1events	10280	Number of level 1 events
revision	3	Processing version of data			

### 2.1.4 Events

	<b>ccd 7</b>
level 1 events	10280
rejected events	3419
rejected %	33%

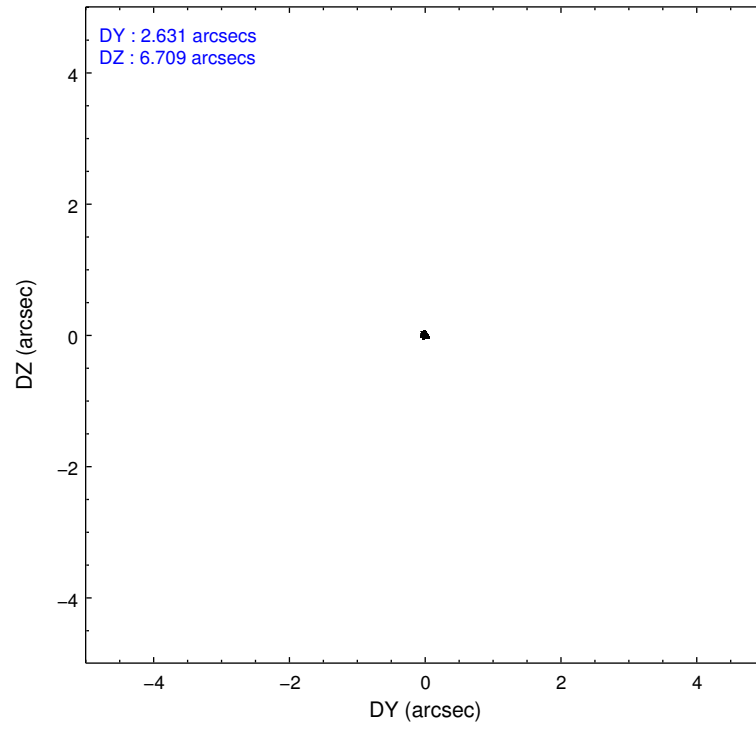
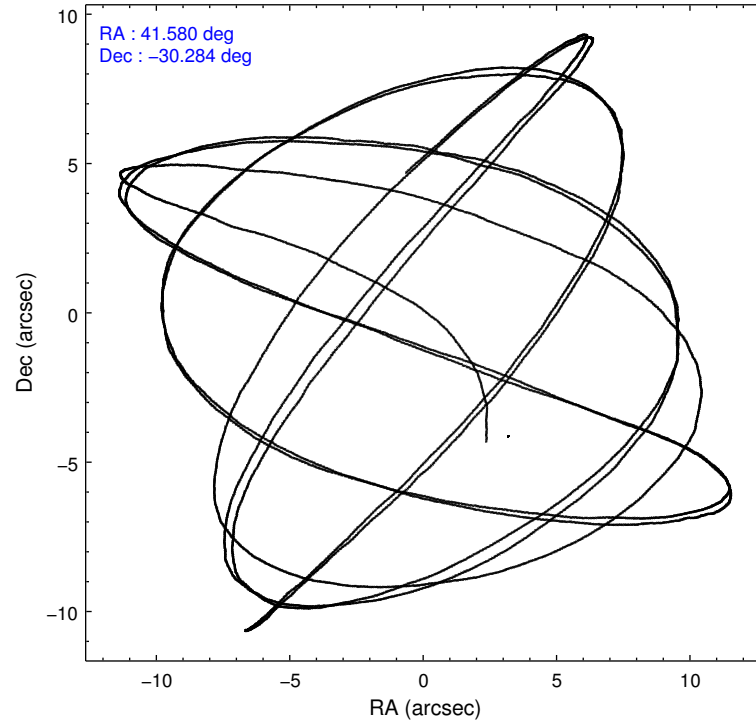
	<b>ccd 7</b>
grade 0 events	1608
	15%
grade 1 events	12
	0%
grade 2 events	1550
	15%
grade 3 events	804
	7%
grade 4 events	790
	7%
grade 5 events	632
	6%
grade 6 events	2109
	20%
grade 7 events	2775
	26%

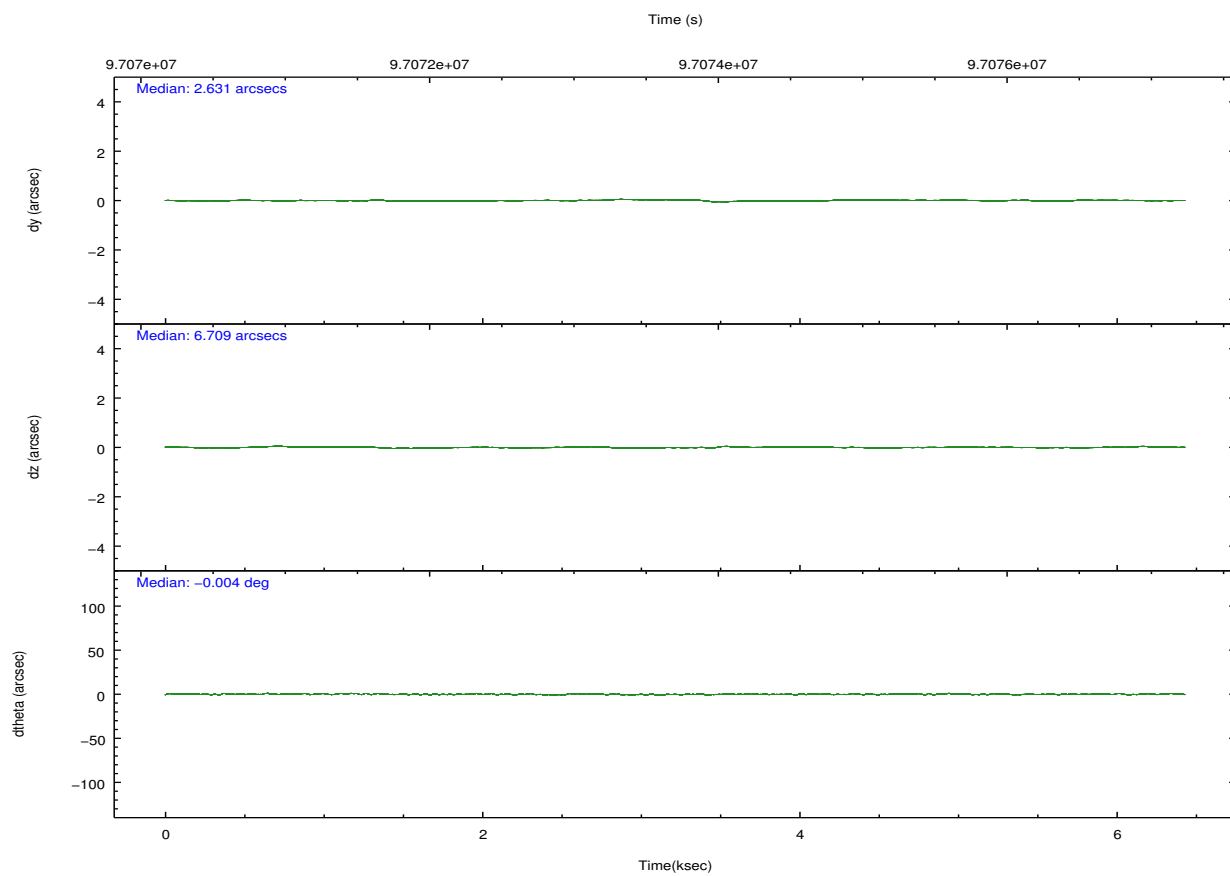
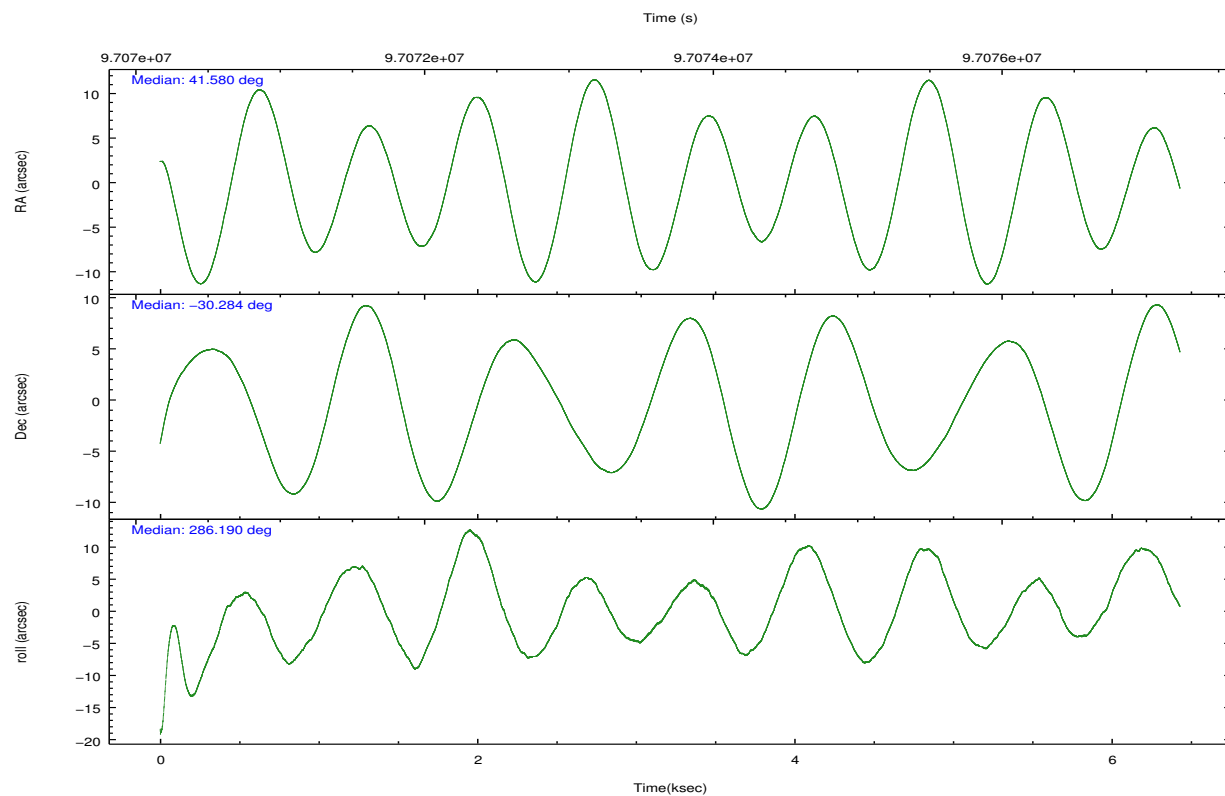


## 2.2 Compared Parameters

Parameter	Planned	Actual	Parameter	Planned	Actual
Instrument	ACIS	ACIS	Obspar format version number	7	7
Detector	ACIS-7	ACIS-7	Obspar file type	PREDICTED	ACTUAL
Grating	NONE	NONE	Obspar update status	NONE	UPDATED
Data mode	VFAINT	VFAINT	Number of optional ACIS chips dropped	0	0
Observation mode	POINTING	POINTING	On-chip summing requested	N	N
[deg] Pointing RA	41.557726	41.58072460300319	Subarray requested	CUSTOM	1/8
[deg] Pointing Dec	-30.265473	-30.2841324736024	Subarray start row	447	447
[deg] Pointing Roll	286.026072	286.1942614758008	Subarray row count	128	128
[mm] SIM focus pos	-0.684267	-0.6828225247311905	Alternating exposures requested	N	N
[mm] SIM defocus	0	0.001444936568705701	[s] Primary exposure time	0.000000	0.4
[mm] SIM translation stage pos	-190.132523	-190.1400660498719			
[mm] SIM translation stage offset	0	0.00754346686406393			
[s] Observation start time (MET)	97071415.184000	97070080.21749499			
Observation start date	2001-01-28T12:15:51	2001-01-28T11:54:40			
[s] Observation end time (MET)	97076915.184000	97077049.192764			
Observation end date	2001-01-28T13:47:31	2001-01-28T13:50:49			
Read mode	TIMED	TIMED			

## 2.3 Aspect



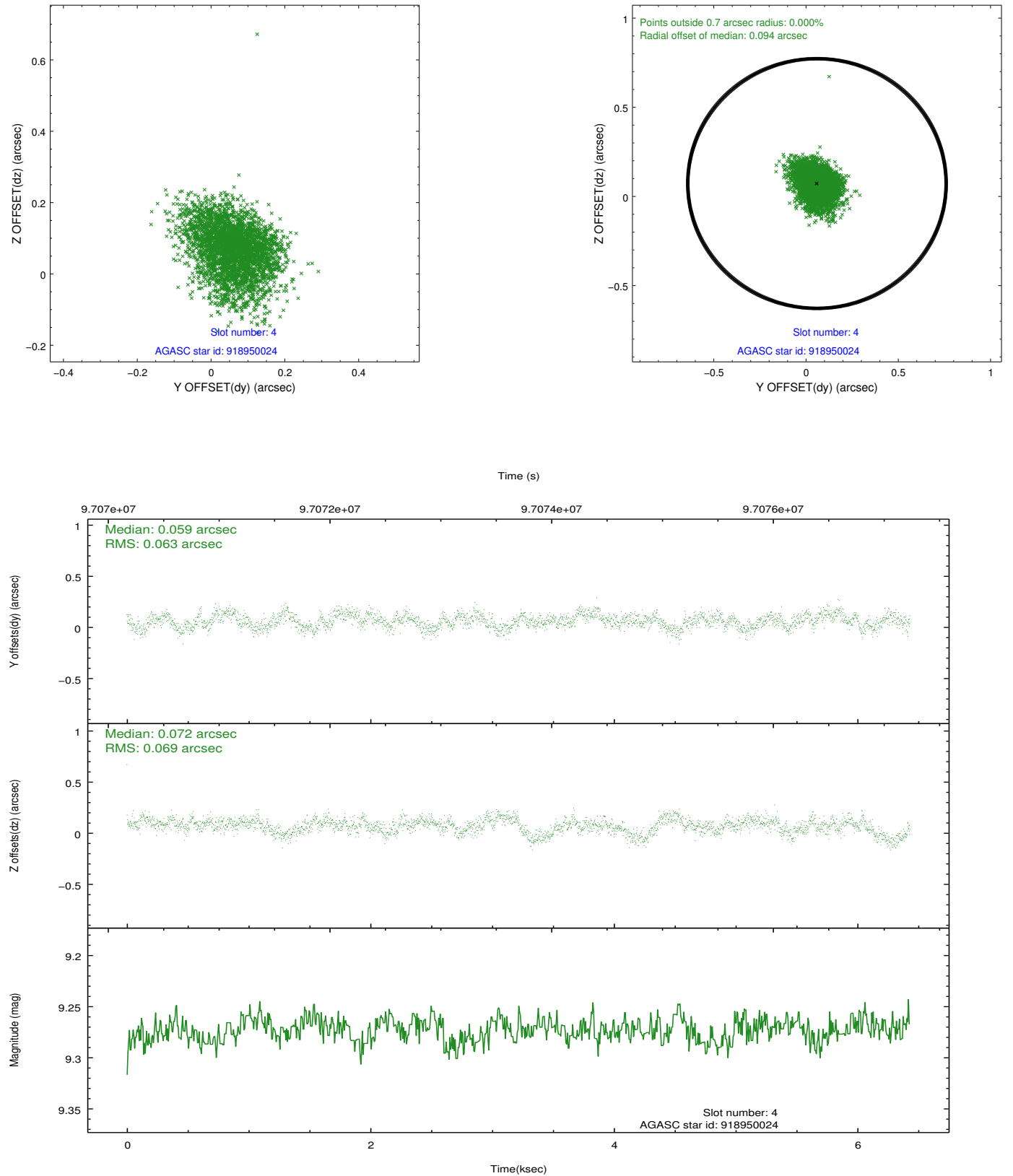


### Slot Statistics

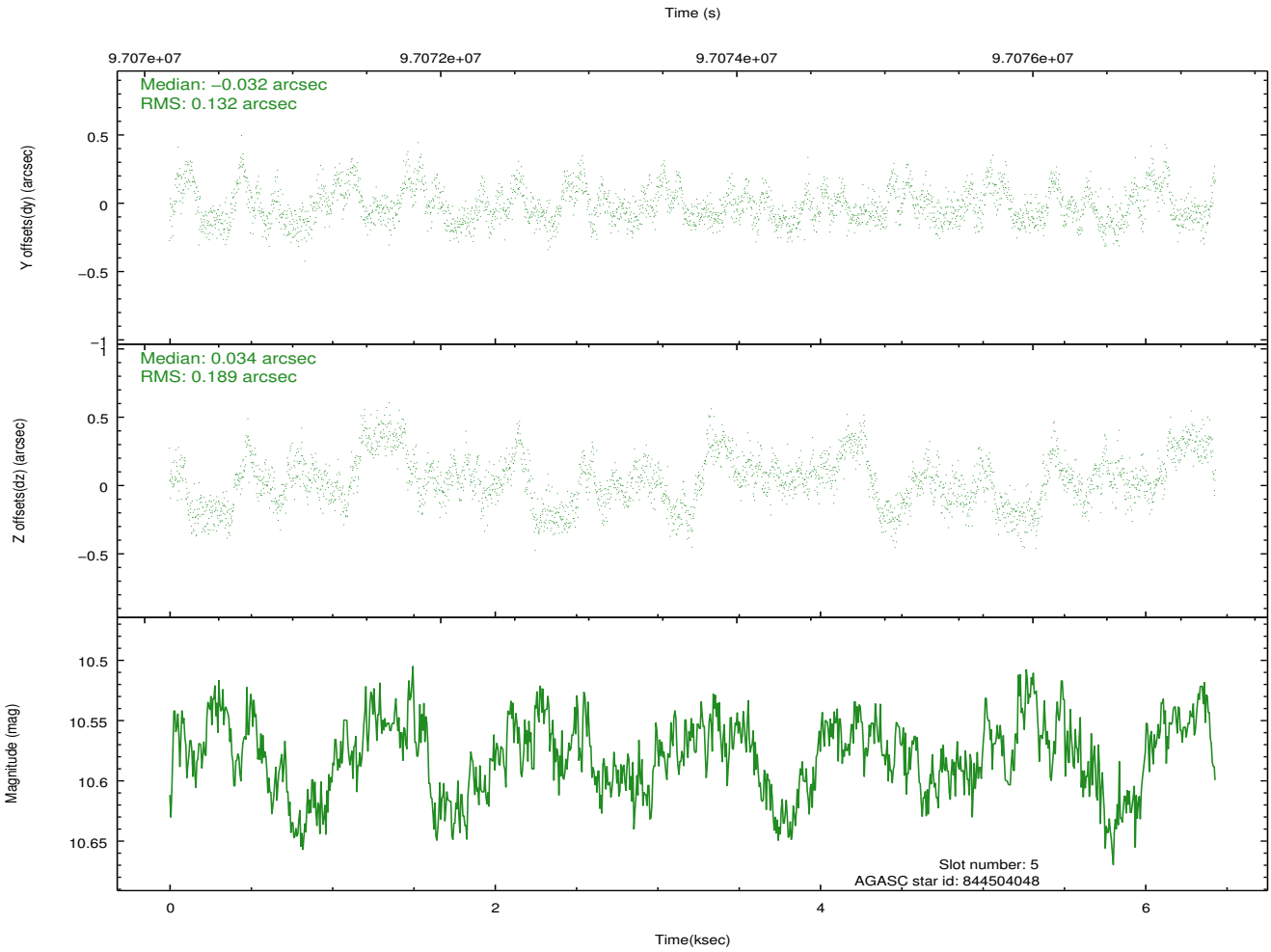
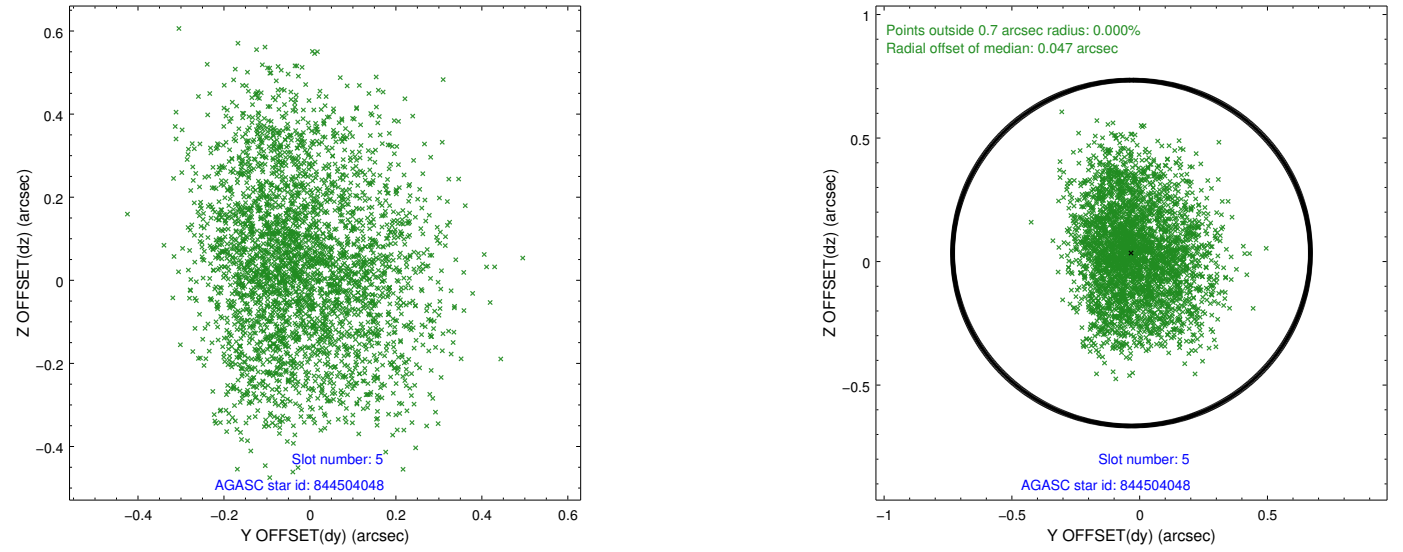
slot	status	id	mag	n_pts	med_dy	med_dz	dr1	dr2	ra	dec	mean_y	mean_z
0	FID	ACIS-S-2	7.12	1569	-0.012	0.014	0.007	0.011	0.000000	0.000000	-755.27	-1727.85
1	FID	ACIS-S-4	7.20	1569	-0.062	0.002	0.006	0.011	0.000000	0.000000	2157.54	179.69
2	FID	ACIS-S-5	7.24	1569	0.043	-0.007	0.007	0.011	0.000000	0.000000	-1806.89	174.37
3	UNUSED		0.00	0	0.000	0.000	0.000	0.000	0.000000	0.000000	0.00	0.00
4	GUIDE	918950024	9.27	3137	0.059	0.072	0.099	0.160	41.512438	-30.524479	858.48	-391.41
5	GUIDE	844504048	10.58	3137	-0.032	0.034	0.253	0.394	41.982243	-29.569526	-2037.62	1969.35
6	GUIDE	843590712	9.83	3137	-0.106	-0.102	0.132	0.209	41.013881	-29.926522	-1637.07	-1293.87
7	GUIDE	918953472	10.18	3134	0.066	-0.002	0.136	0.234	41.953343	-30.707298	1869.30	737.88

## 2.4 Star Slots

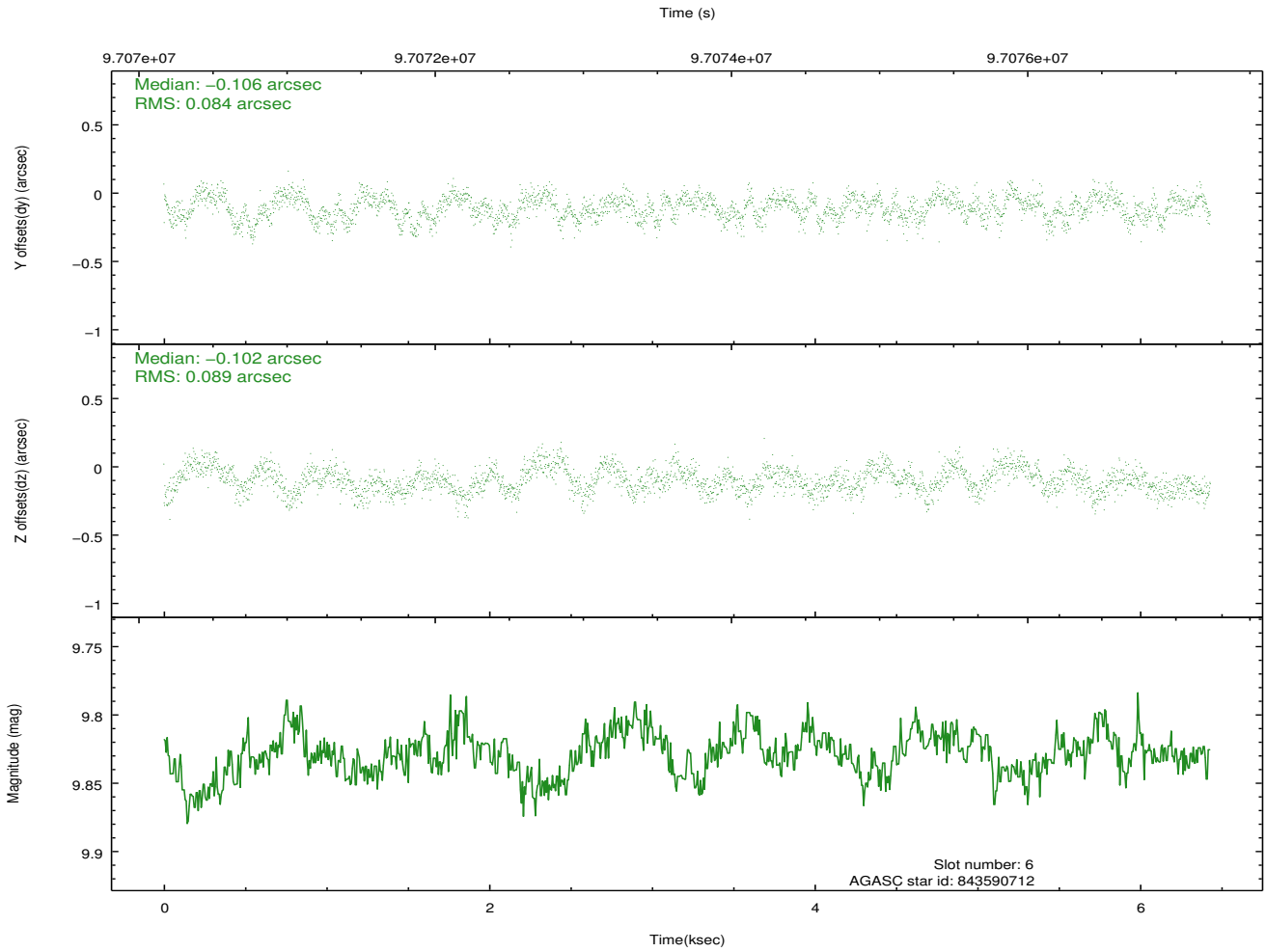
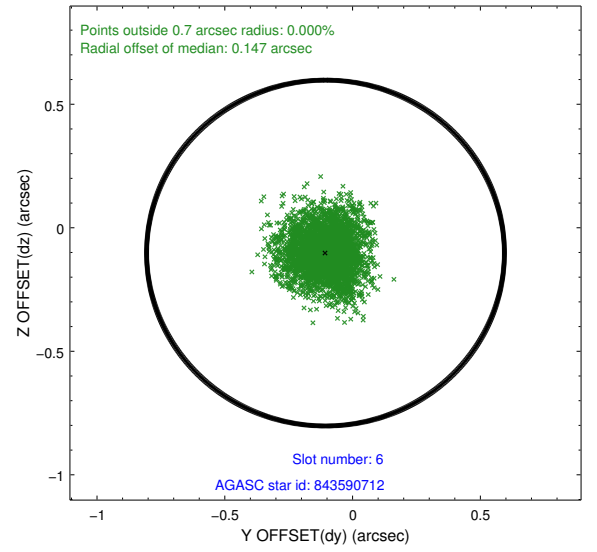
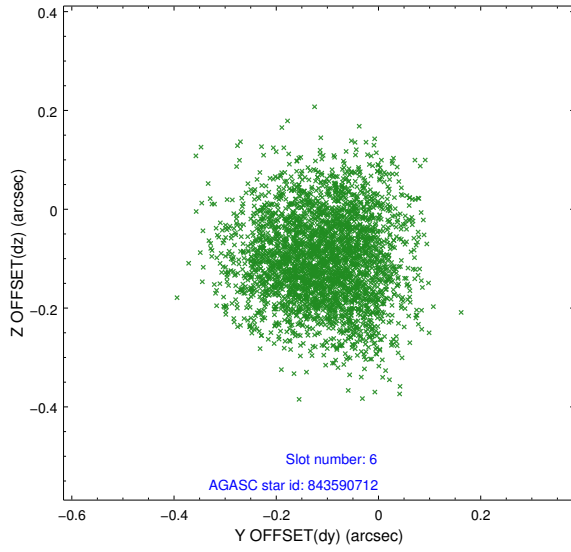
### 2.4.1 Slot 4



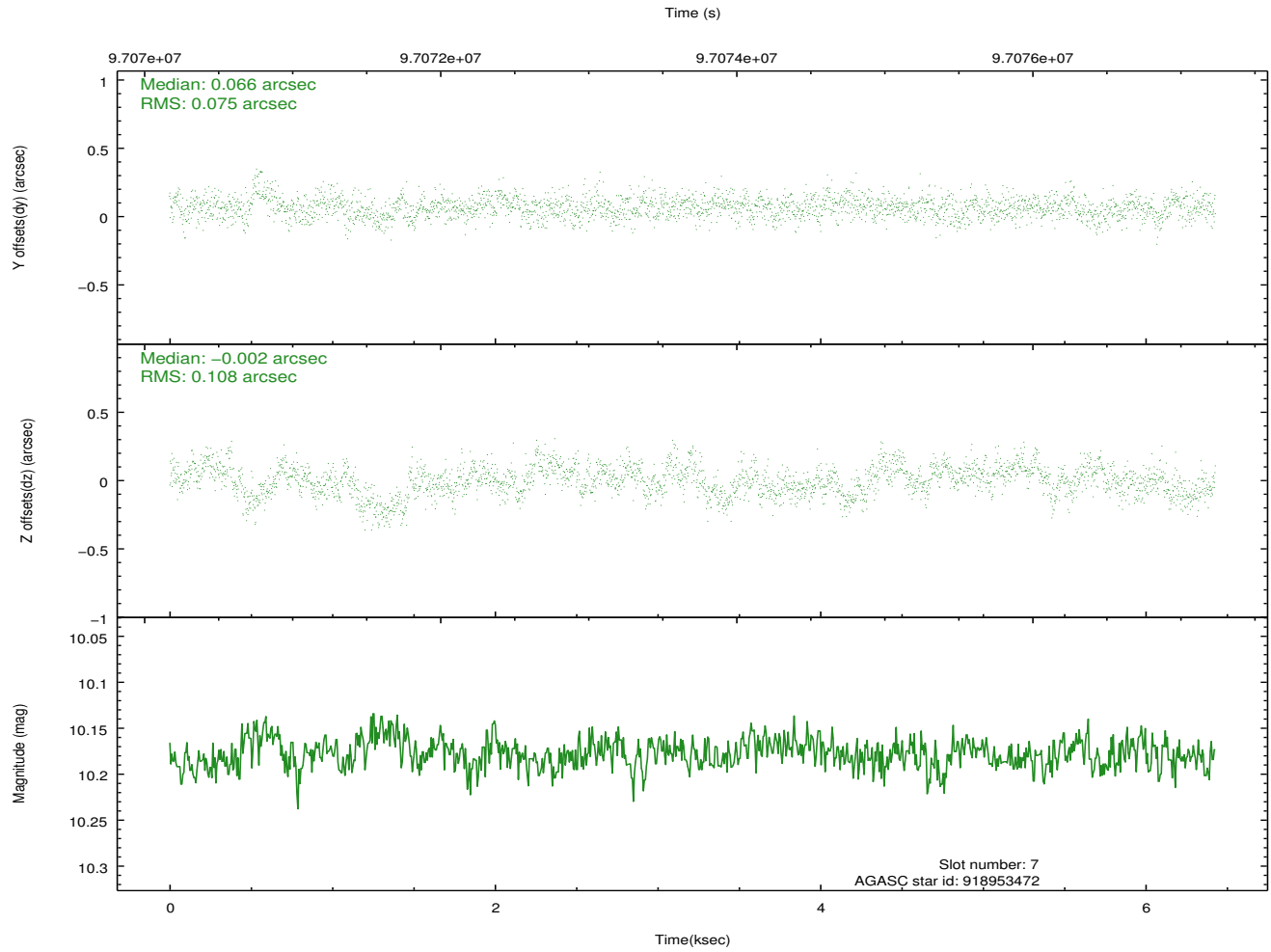
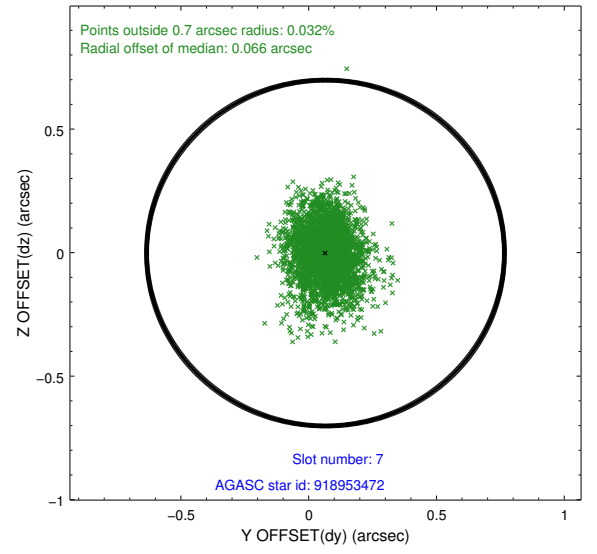
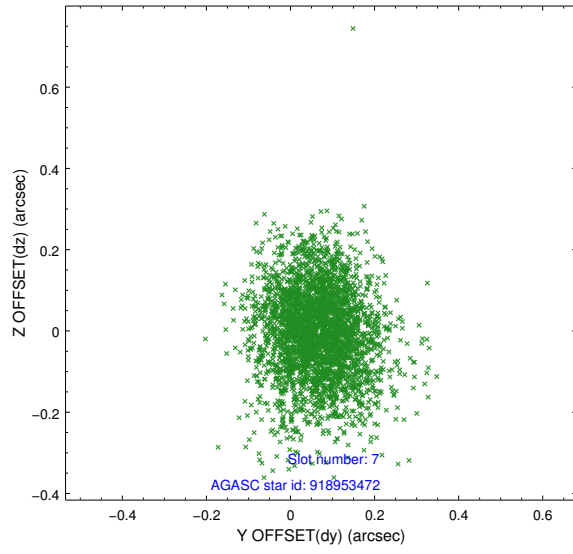
## 2.4.2 Slot 5



### 2.4.3 Slot 6



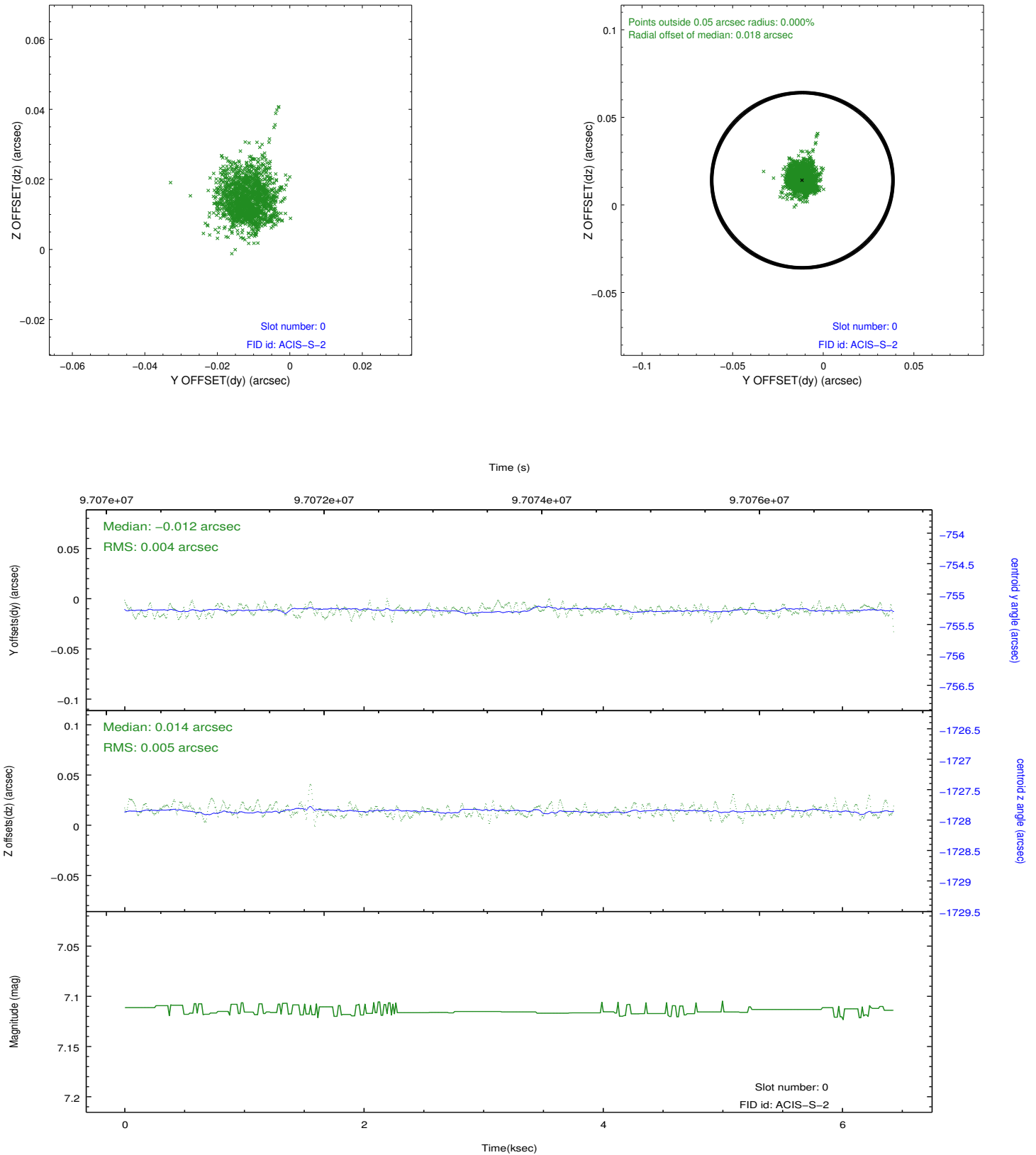
## 2.4.4 Slot 7



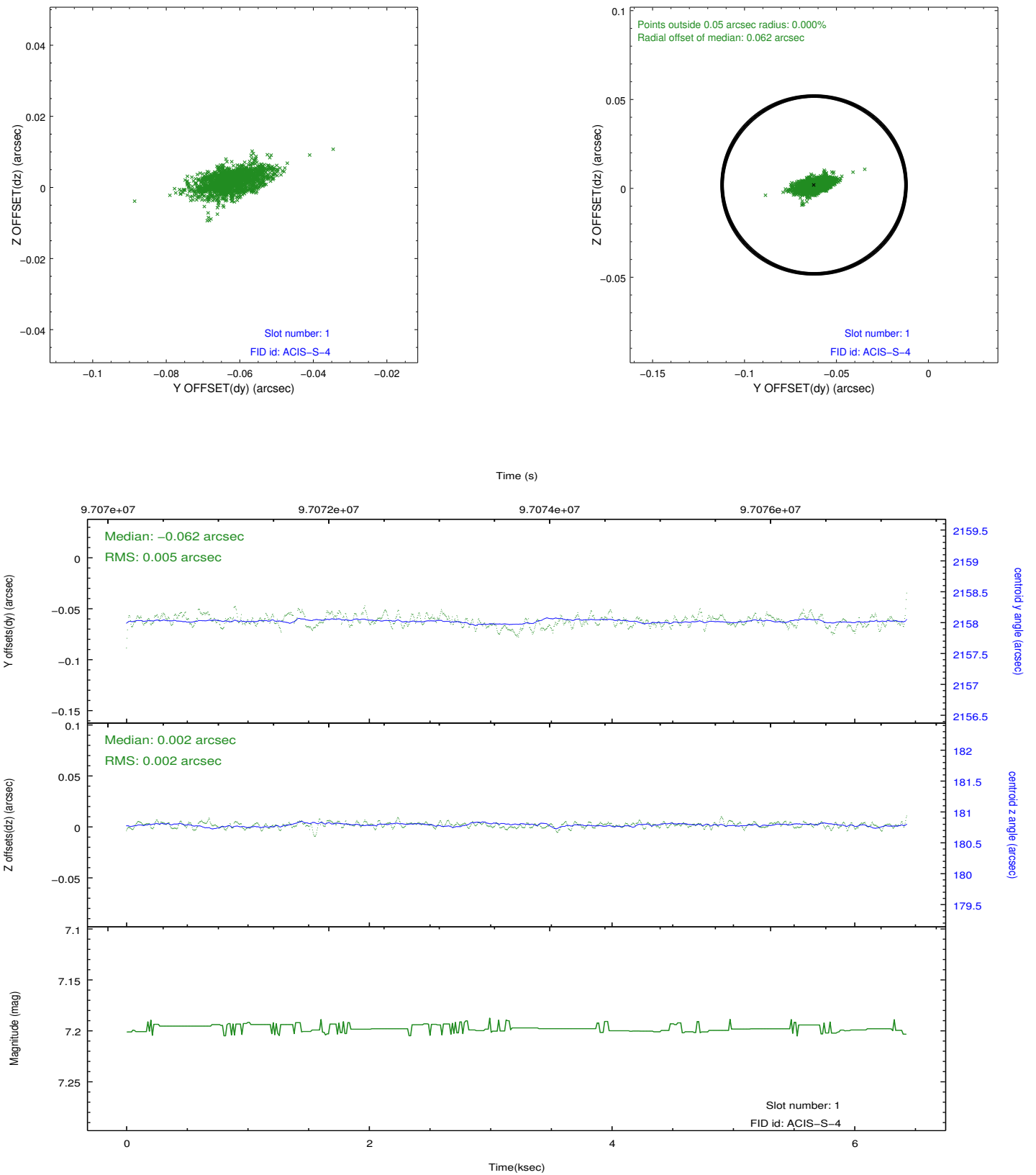


## 2.5 FID Slots

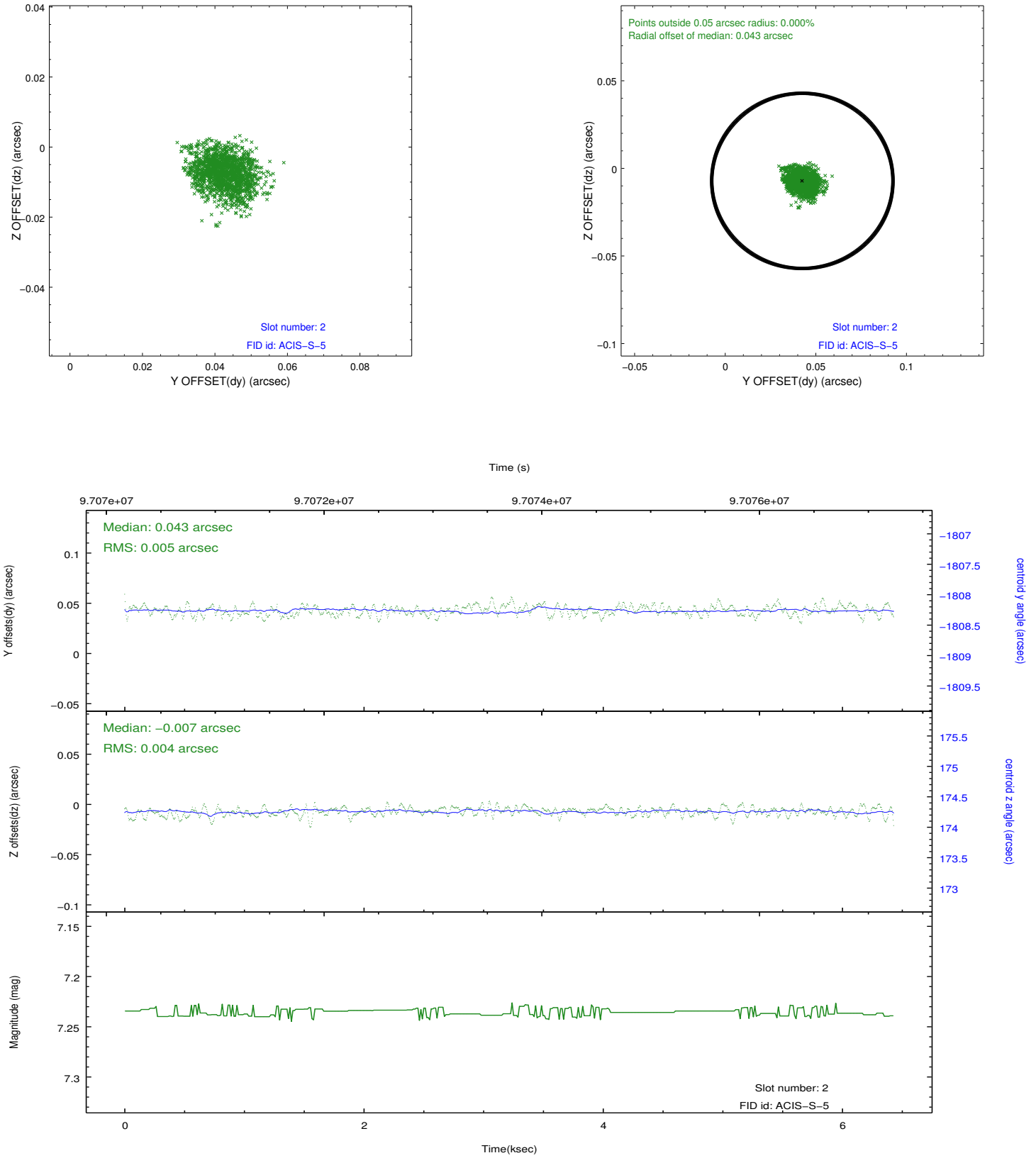
### 2.5.1 Slot 0



## 2.5.2 Slot 1



### 2.5.3 Slot 2



## A Summary

### A.1 Status

V&V Scientist	Beth Sundheim
V&V Date (YYYY-MM-DD)	2012.09.17
V&V Edition	1
V&V Disposition and Status	OK
V&V Charge Time	6.332

### A.2 Comments

Slot 3 was not utilized in this observation.