

V&V Reference Report

L2 ASCDS Version : 7.6.9

Observation 2190 - L2 Version 001
Chandra X-Ray Center

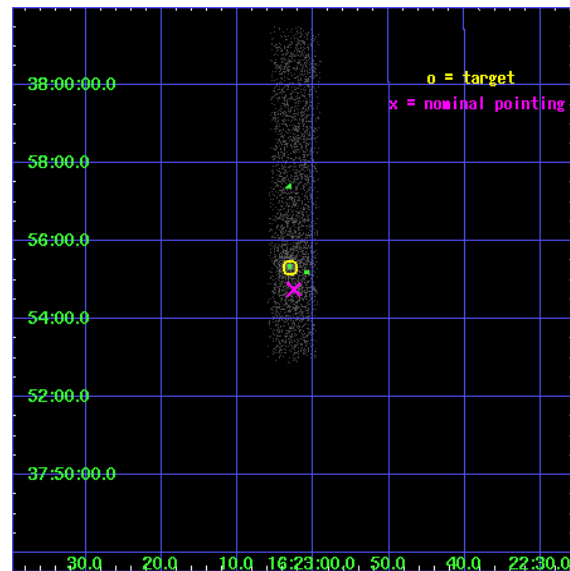
L2 Processing Date : Dec 30 2006

Contents

1	Front	2
2	OBI	3
2.1	OBI	3
2.1.1	Images	3
2.1.2	Bias	3
2.1.3	Parameters	4
2.1.4	Events	4
2.2	Compared Parameters	5
2.3	Aspect	6
2.4	Star Slots	9
2.4.1	Slot 3	9
2.4.2	Slot 4	10
2.4.3	Slot 5	11
2.4.4	Slot 6	12
2.4.5	Slot 7	13
2.5	FID Slots	14
2.5.1	Slot 0	14
2.5.2	Slot 1	15
2.5.3	Slot 2	16
3	Point Sources	17
A	Summary	18
A.1	Status	18
A.2	Comments	18

1 Front

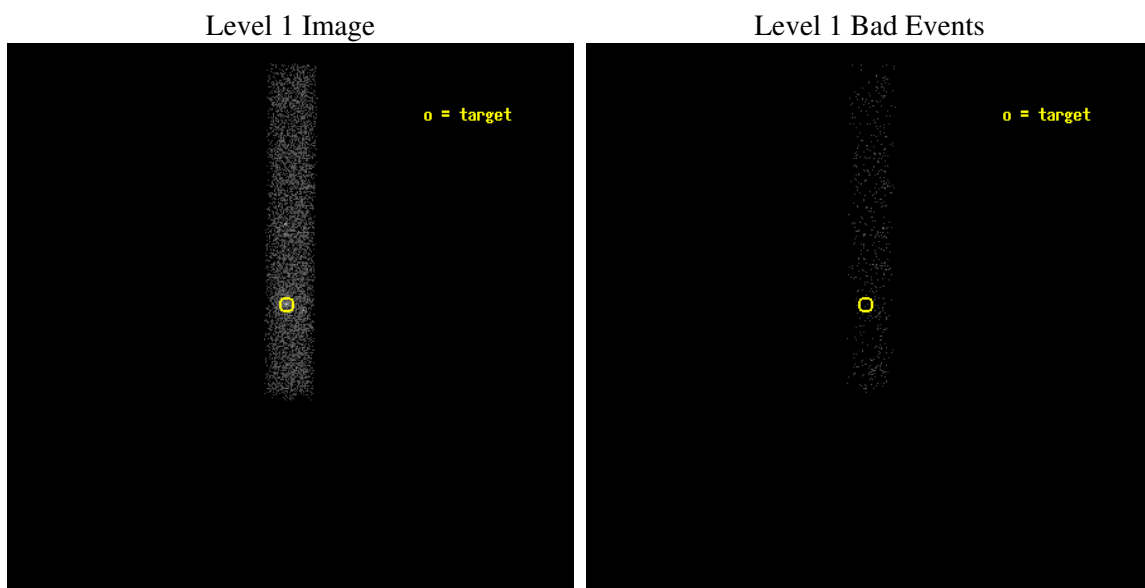
seq_num	700380
obs_id	2190
title	HUNTING THE AGN CORES AND JETS IN FRI RADIO GALAXIES
observer	Prof Diana Worrall
object	B2 1621+38
dtcycle	0
cycle	P
ra_targ	245.762917
dec_targ	37.922278
ra_nom	245.76078709336
dec_nom	37.912708604936
roll_nom	270.64587786506
revision	2
ontime	5846.8000871241
livetime	5302.7390596083
ontime7	5846.8000871241
l2events	4041



2 OBI

2.1 OBI

2.1.1 Images



2.1.2 Bias

Chip 7



2.1.3 Parameters

obi_num	0
ascdsver	7.6.9
caldbver	3.2.4
date	2006-12-31T02:18:48
revision	2

sched_exp_time	5000.000000
ontime	5847.673021093
ontime7	5847.673021093
l1events	7678

2.1.4 Events

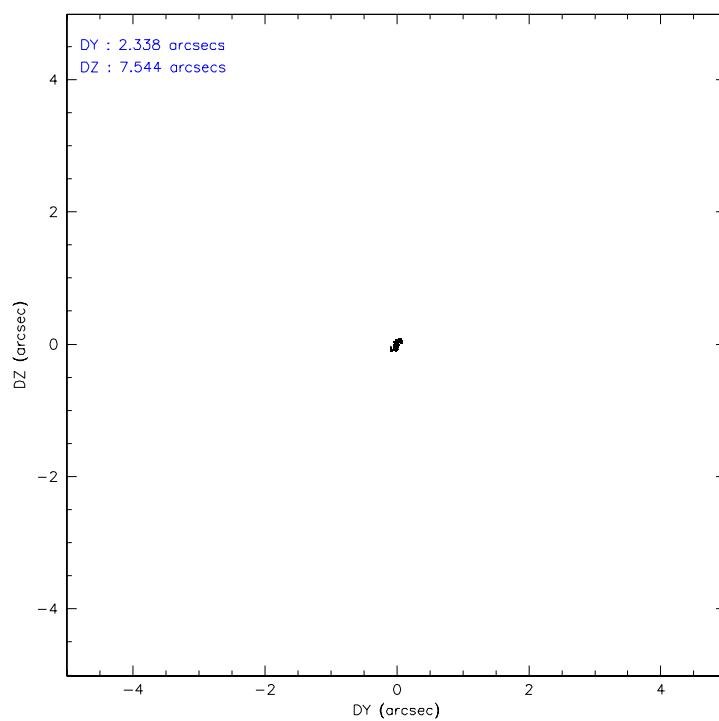
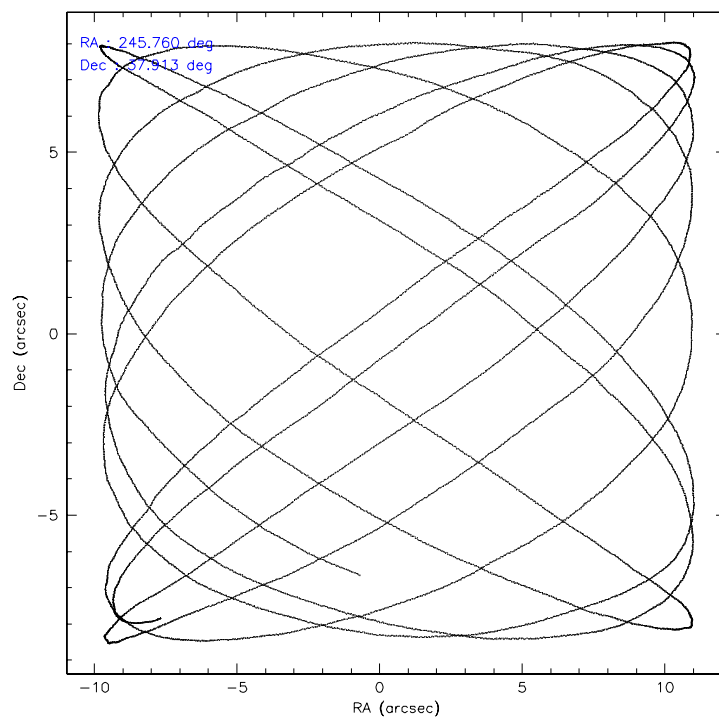
	ccd 7
level 1 events	7678
rejected events	3500
rejected %	45%

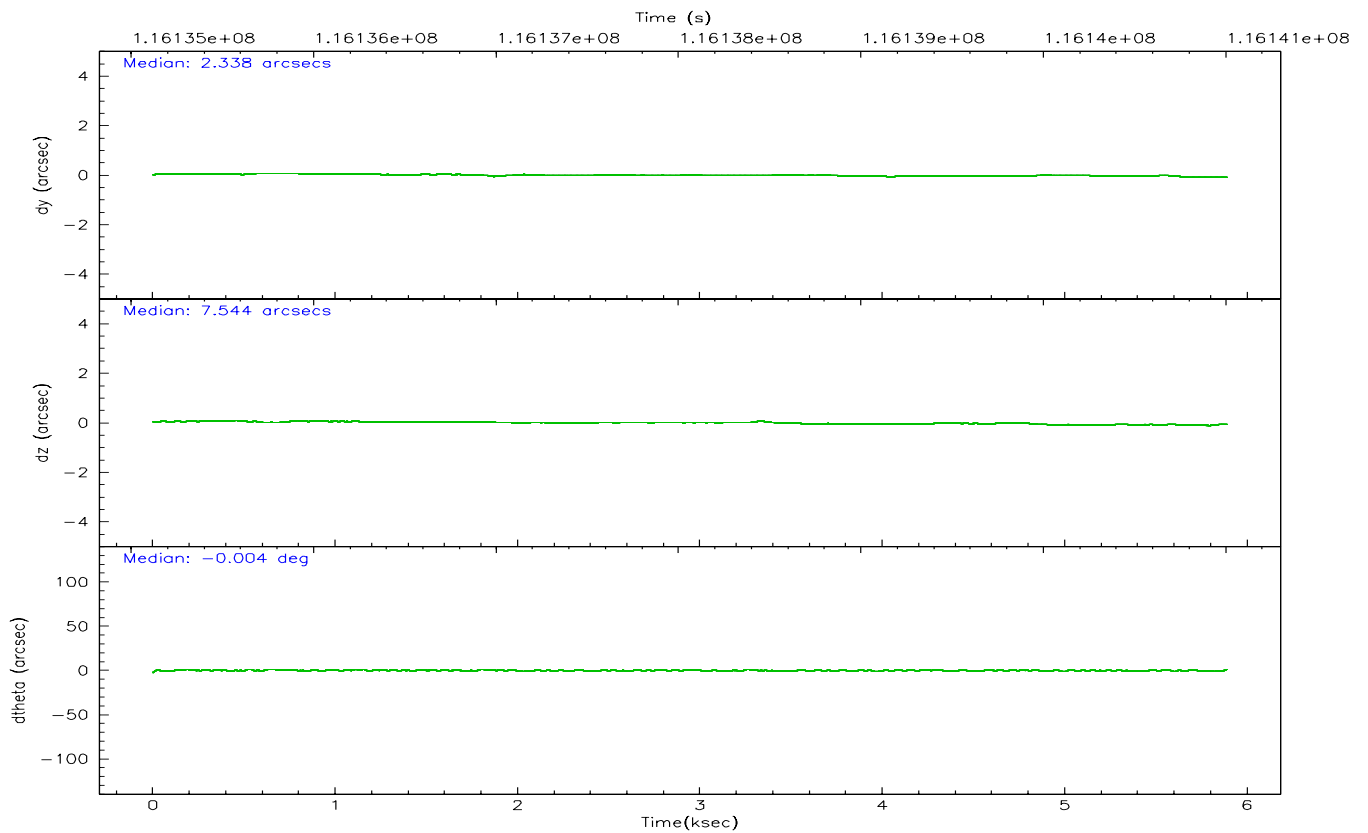
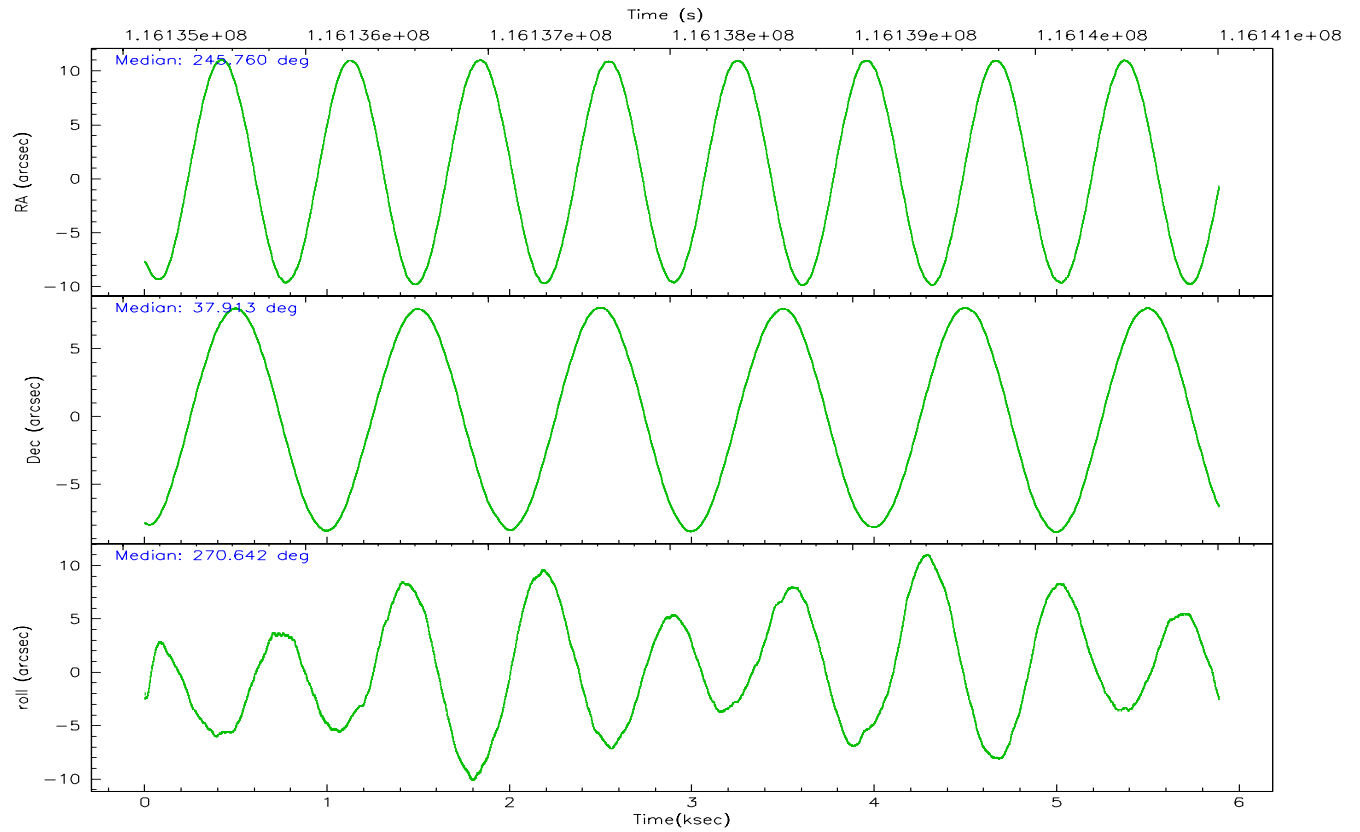
	ccd 7
grade 0 events	654
	8%
grade 1 events	3
	0%
grade 2 events	975
	12%
grade 3 events	476
	6%
grade 4 events	406
	5%
grade 5 events	458
	5%
grade 6 events	1667
	21%
grade 7 events	3039
	39%

2.2 Compared Parameters

Parameter	Planned	Actual	Parameter	Planned	Actual
Instrument	ACIS	ACIS	Obspar format version number	6	6
Detector	ACIS-7	ACIS-7	Obspar file type	PREDICTED	ACTUAL
Grating	NONE	NONE	Obspar update status	NONE	UPDATED
Data mode	FAINT	FAINT	Number of optional ACIS chips dropped	0	0
Observation mode	POINTING	POINTING	On-chip summing requested	N	N
Pointing RA	245.742910	245.7607870933564	Subarray requested	1/8	1/8
Pointing Dec	37.935972	37.91270860493599	Subarray start row	0	449
Pointing Roll	270.500239	270.6458778650594	Subarray row count	1024	128
SIM focus pos (mm)	-0.684267	-0.6828225247311905	Alternating exposures requested	N	N
SIM defocus (mm)	0	0.001444936568705701	Primary exposure time	0.000000	0.4
SIM translation stage pos (mm)	-190.132523	-190.1425803651734			
SIM translation stage offset (mm)	0	0.01005778216563158			
Observation start time	116136012.184000	116134700.17224			
Observation start date	2001-09-06T03:59:08	2001-09-06T03:38:20			
Observation end time	116141012.184000	116141679.39751			
Observation end date	2001-09-06T05:22:28	2001-09-06T05:34:39			
Read mode	TIMED	TIMED			

2.3 Aspect



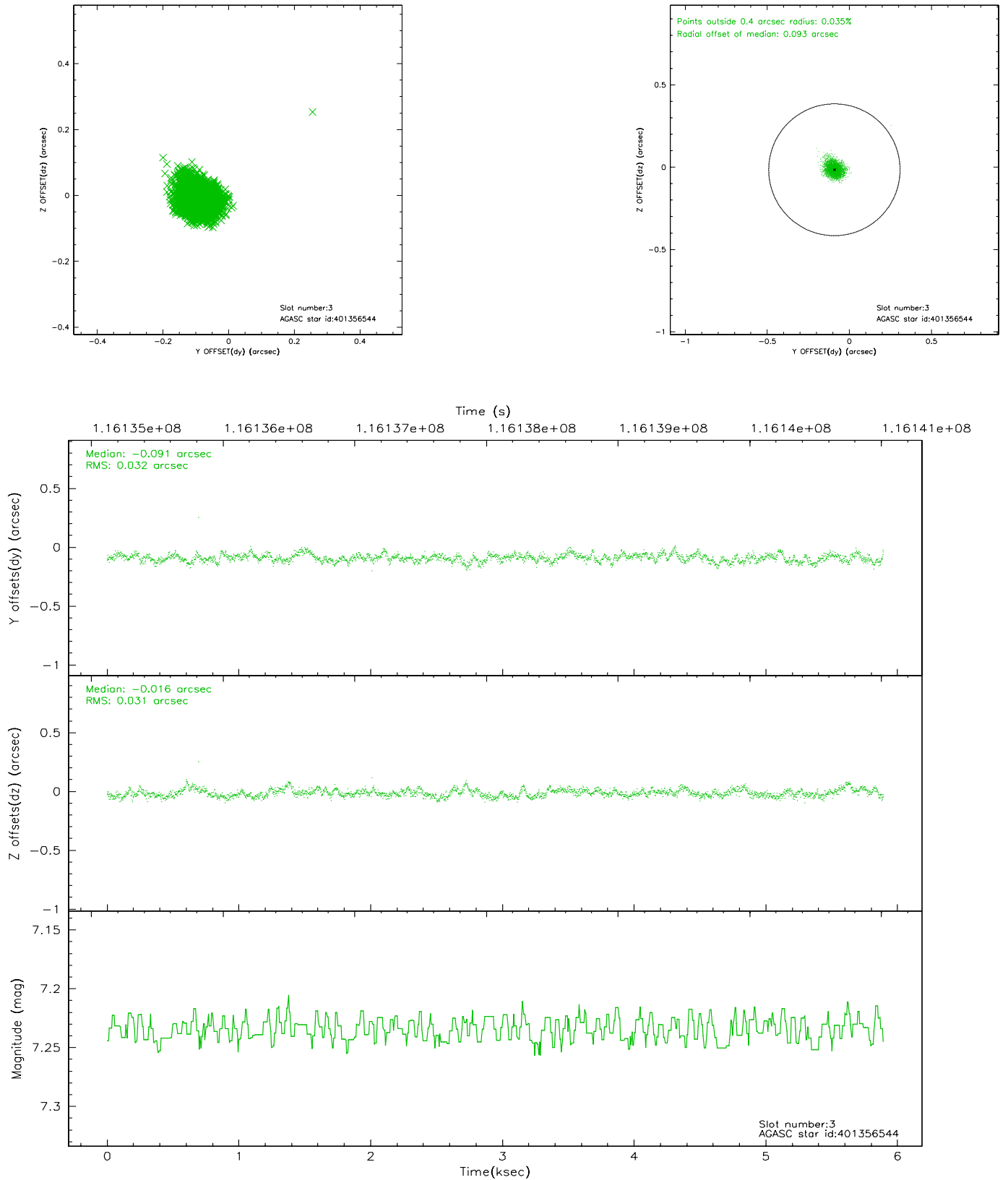


Slot Statistics

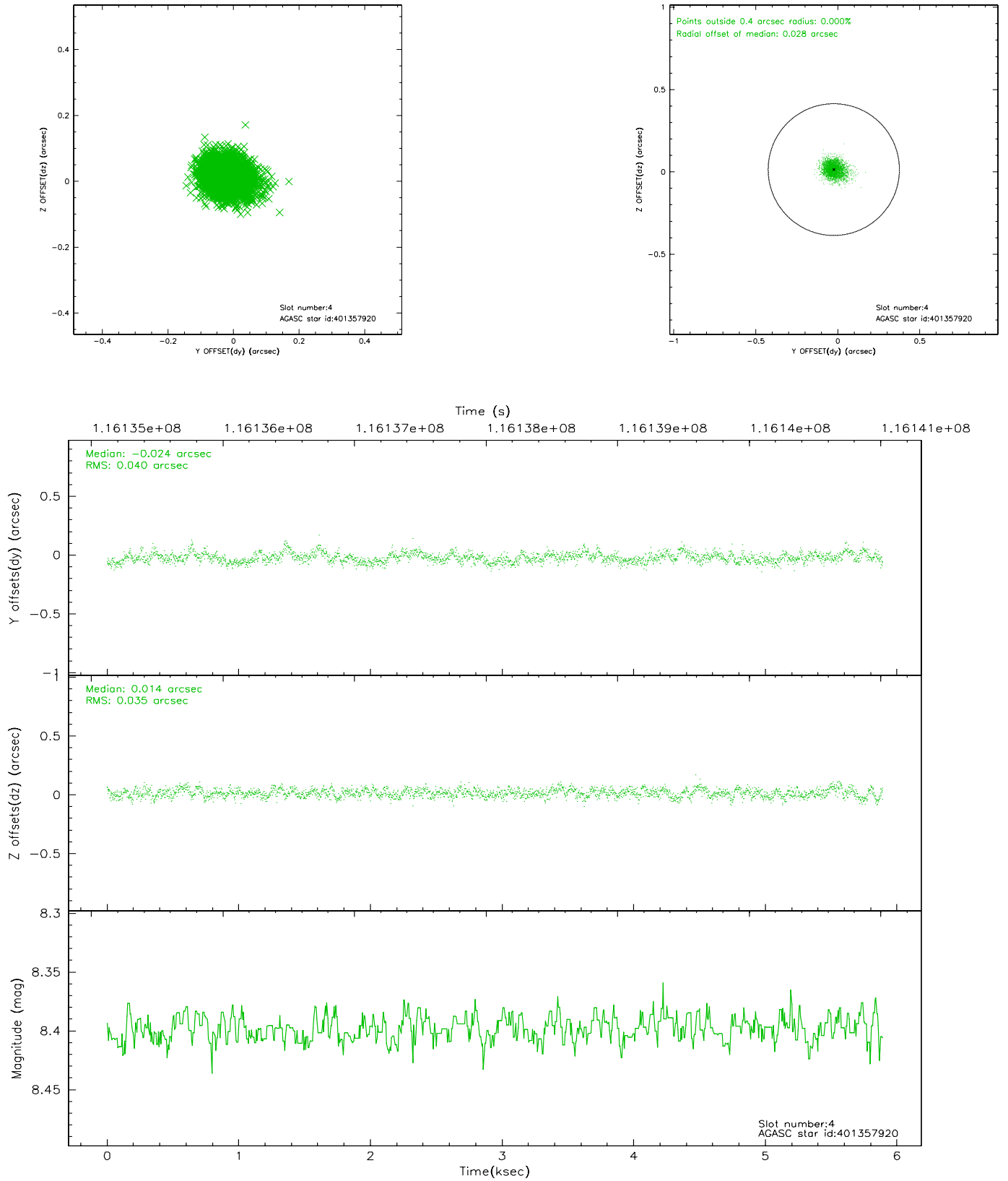
slot	status	id	mag	n_pts	med_dy	med_dz	dr1	dr2	ra	dec	mean_y	mean_z
0	FID	ACIS-S-2	7.11	1437	0.001	0.015	0.007	0.011	0.000000	0.000000	-754.96	-1728.65
1	FID	ACIS-S-4	7.19	1436	-0.094	-0.005	0.005	0.008	0.000000	0.000000	2157.77	178.77
2	FID	ACIS-S-5	7.24	1436	0.061	-0.002	0.006	0.012	0.000000	0.000000	-1806.44	173.59
3	GUIDE	401356544	7.23	2874	-0.091	-0.016	0.047	0.075	246.068366	38.478292	-1945.43	935.29
4	GUIDE	401357920	8.40	2874	-0.024	0.014	0.056	0.091	245.268524	37.658915	982.18	-1359.04
5	GUIDE	401357328	8.98	2873	0.026	0.132	0.072	0.124	246.205033	38.152914	-771.89	1315.82
6	GUIDE	401354800	9.49	2874	-0.032	0.001	0.113	0.182	246.509373	38.353235	-1492.01	2178.50
7	GUIDE	338962904	9.56	2873	0.122	-0.135	0.126	0.208	245.058454	37.300350	2264.34	-1978.05

2.4 Star Slots

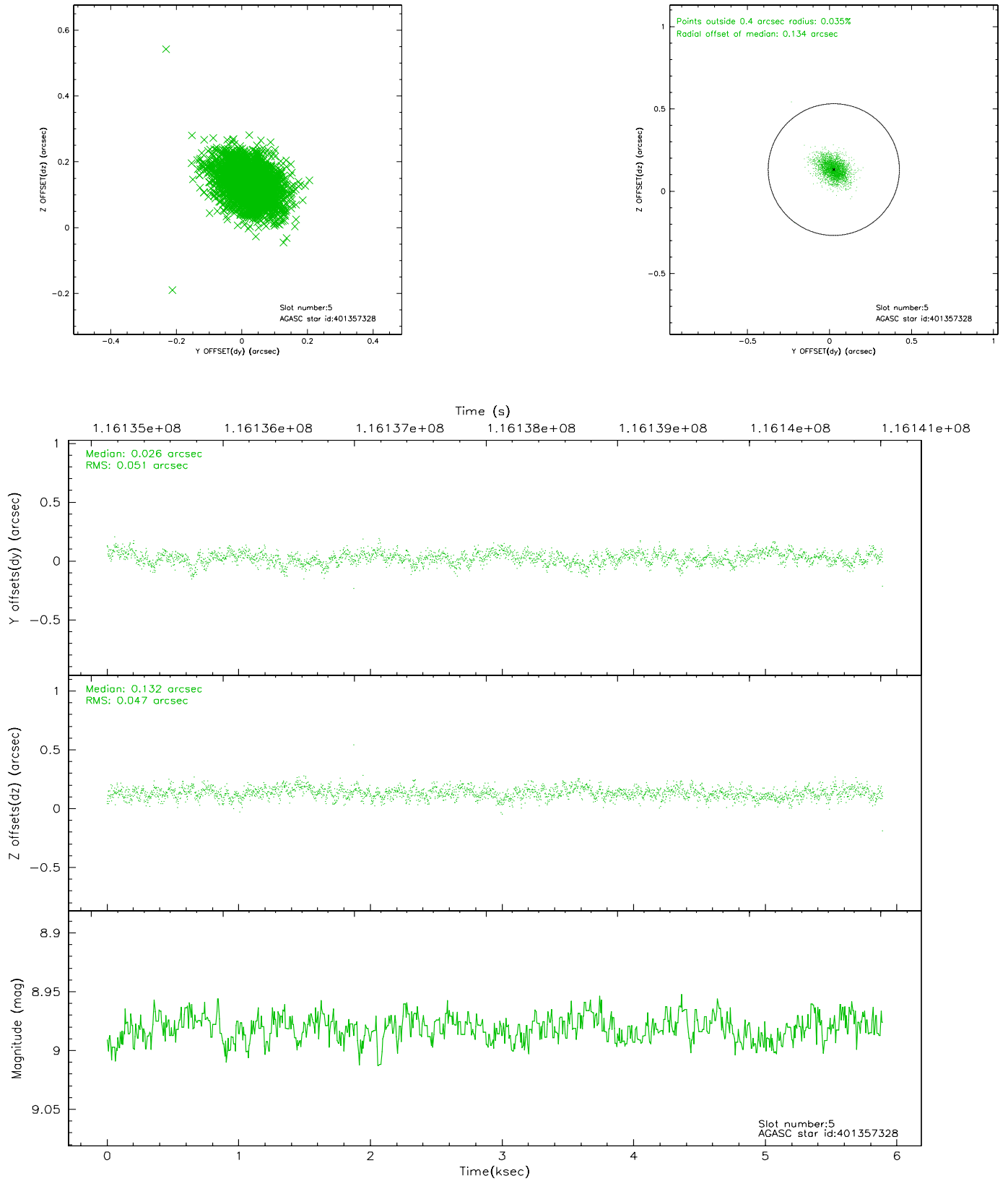
2.4.1 Slot 3



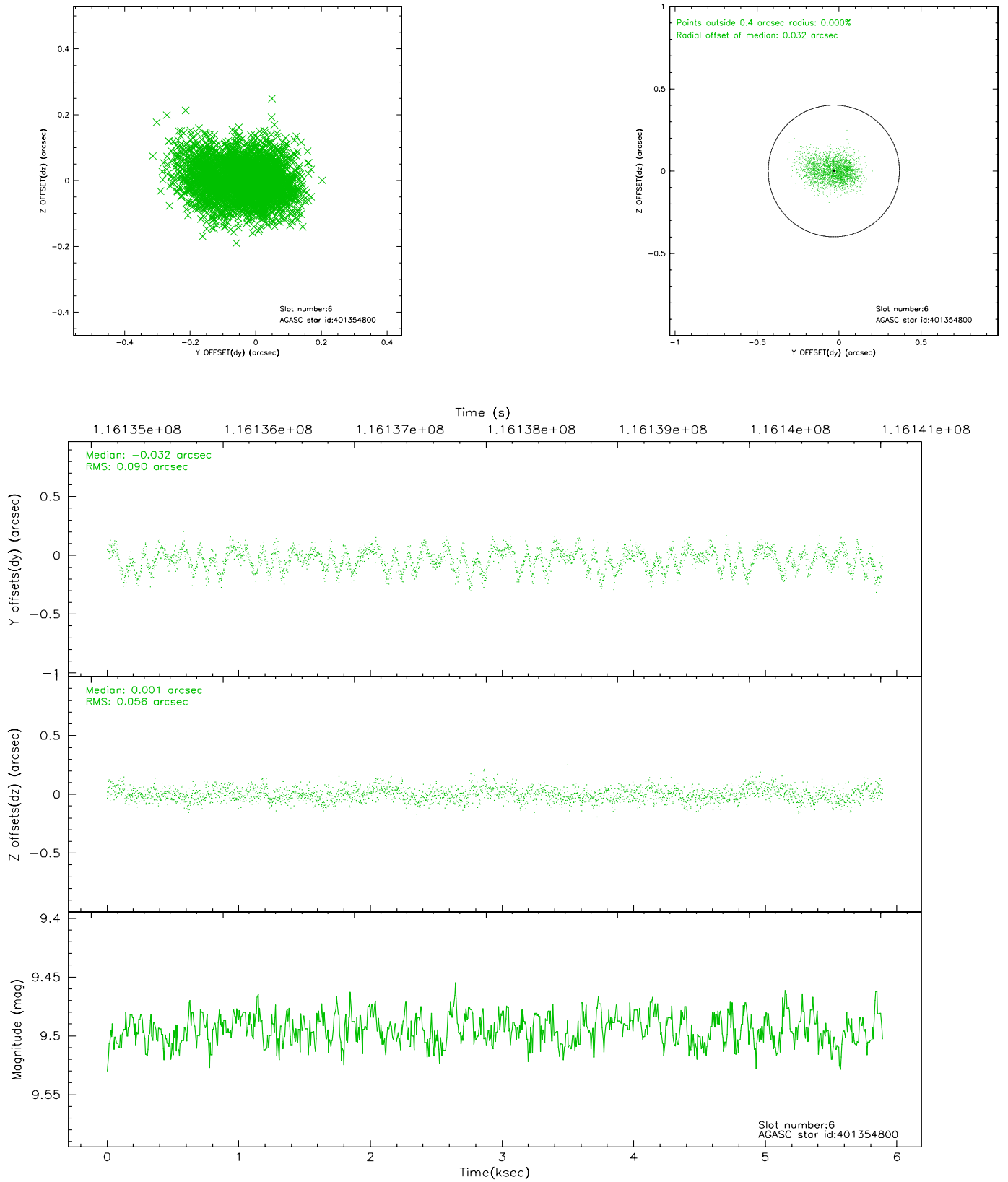
2.4.2 Slot 4



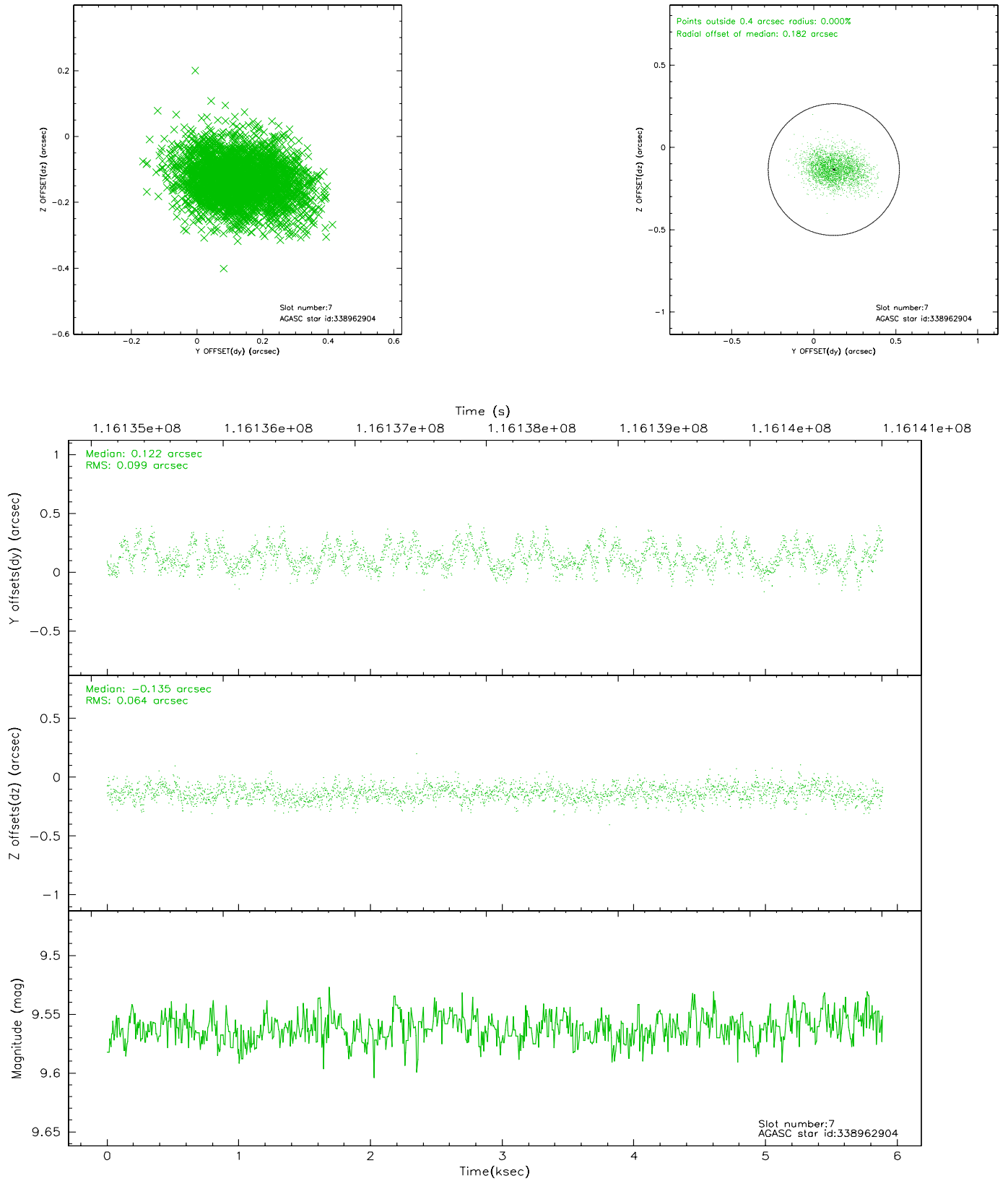
2.4.3 Slot 5



2.4.4 Slot 6

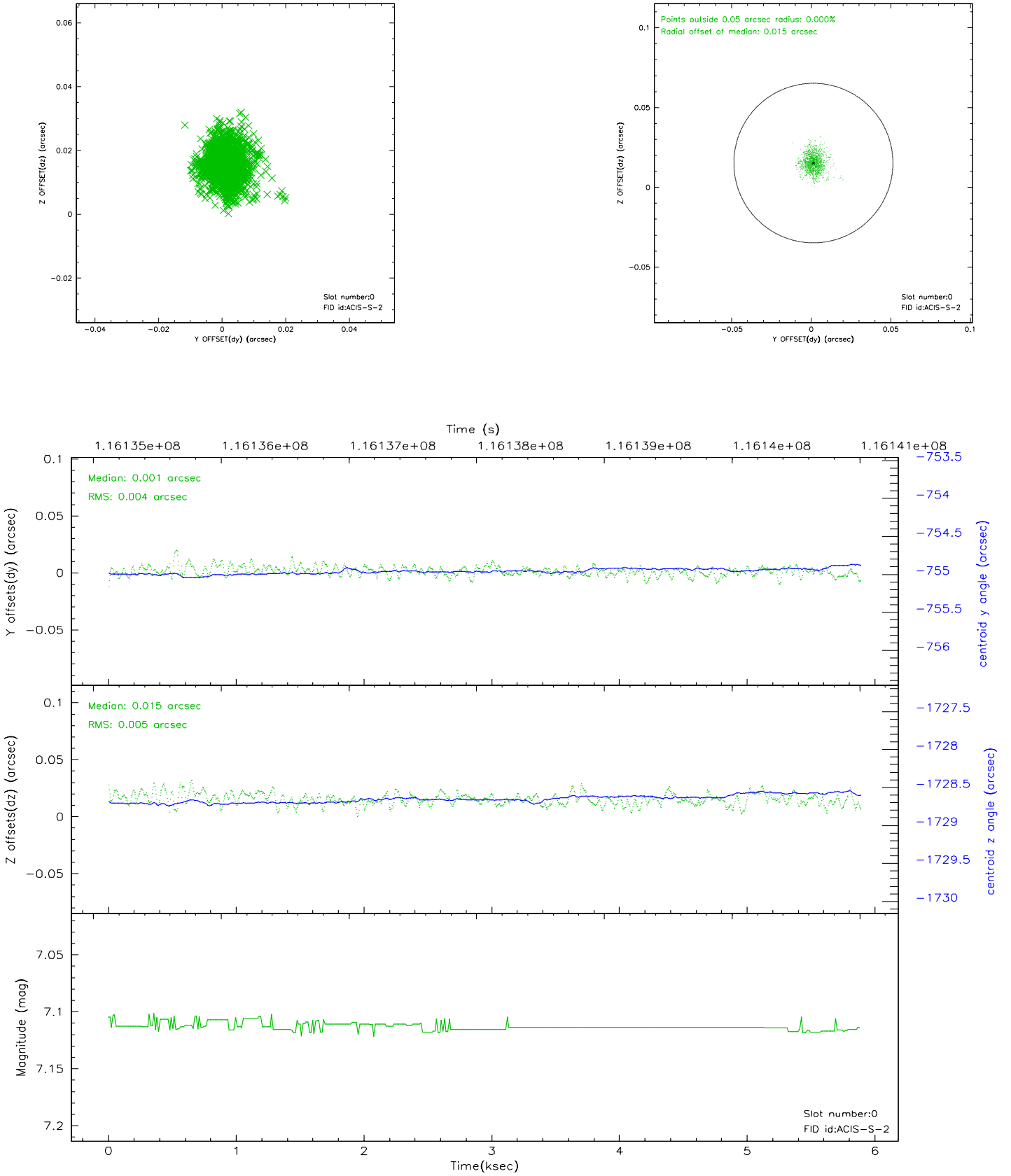


2.4.5 Slot 7

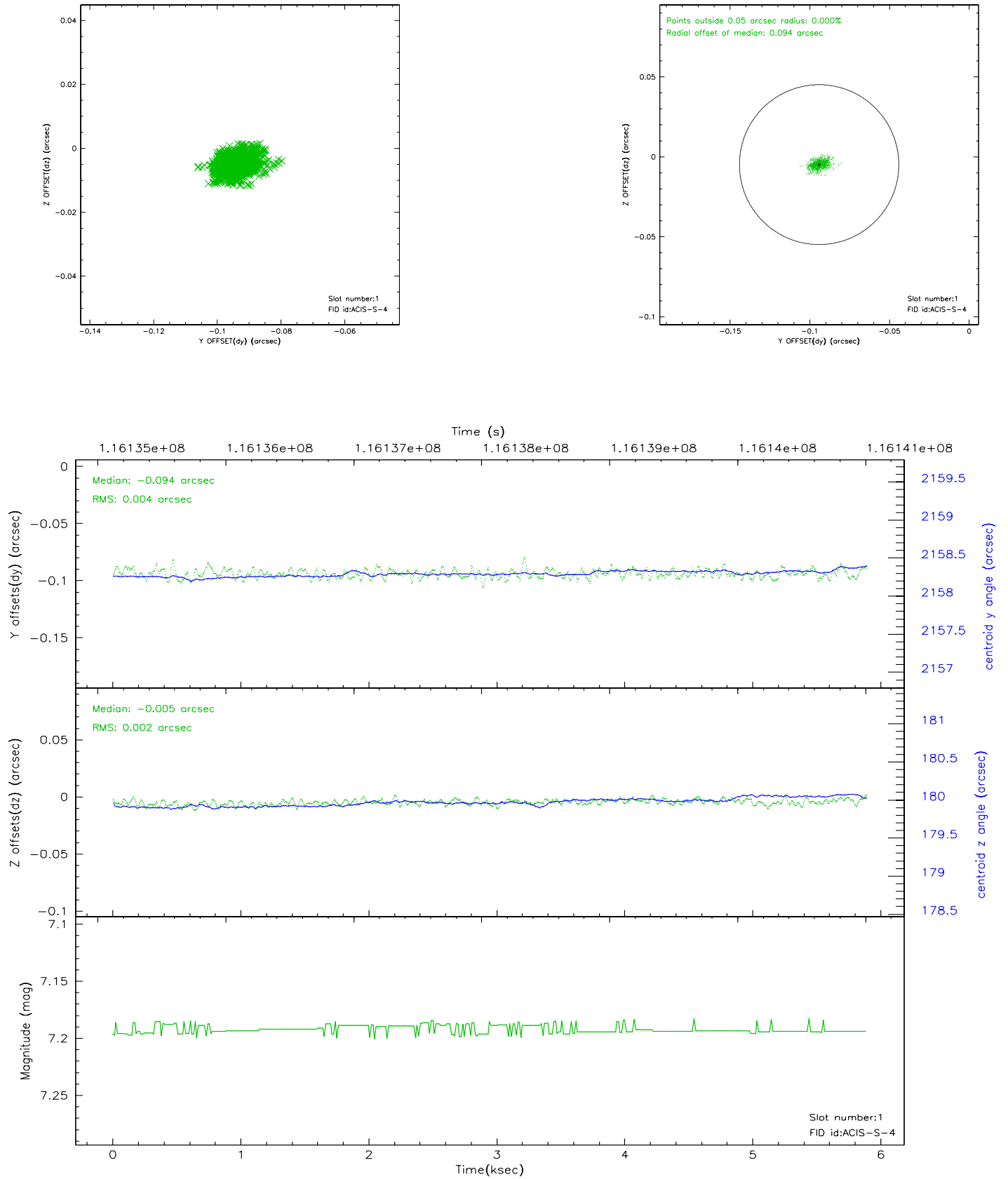


2.5 FID Slots

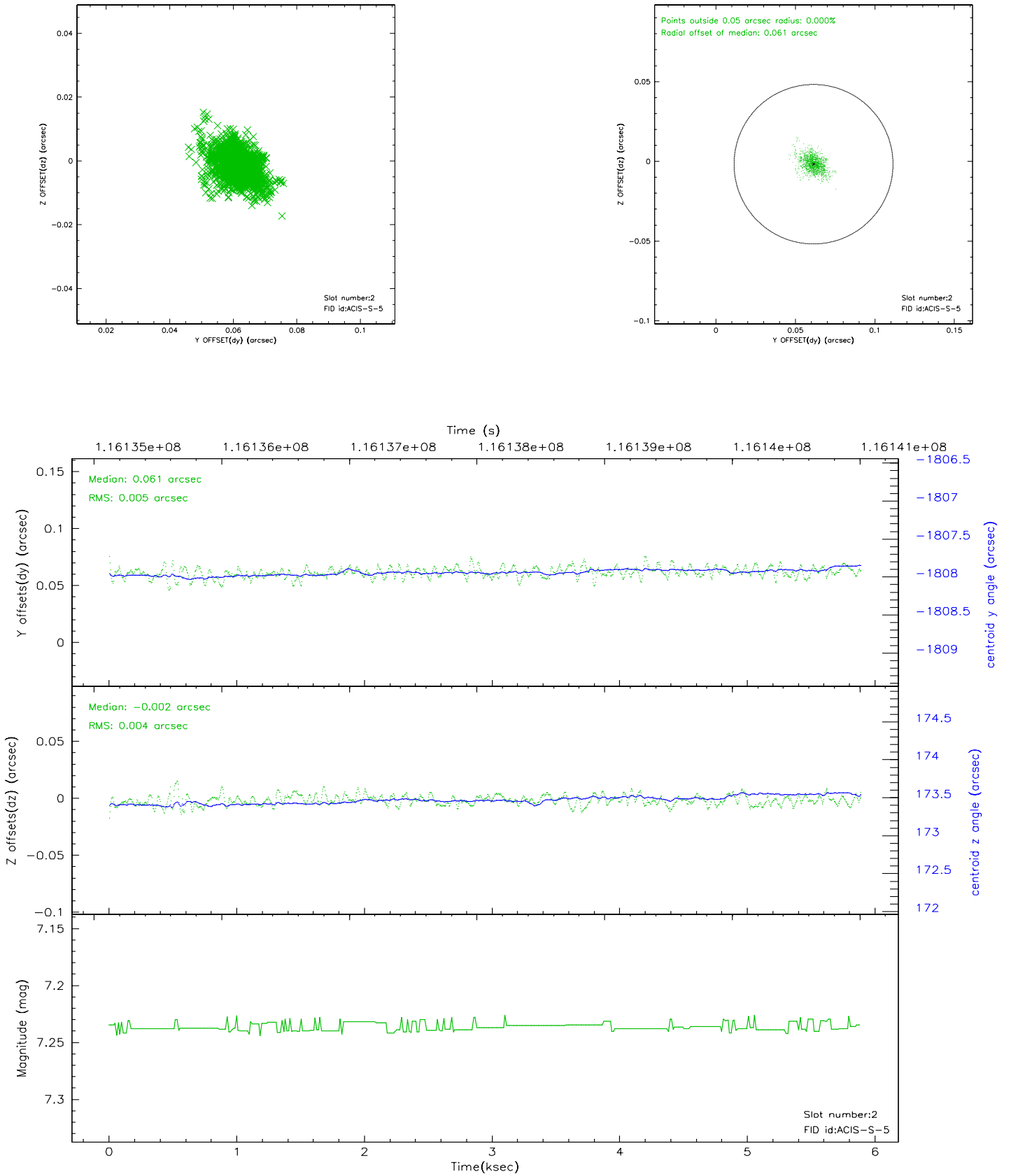
2.5.1 Slot 0



2.5.2 Slot 1



2.5.3 Slot 2



3 Point Sources

A Summary

A.1 Status

V&V Scientist	Beth Sundheim
V&V Date (YYYY-MM-DD)	2007.01.03
V&V Edition	1
V&V Disposition and Status	OK
V&V Charge Time	5.847

A.2 Comments