

V&V Reference Report

L2 ASCDS Version : 8.4.5

Observation 2189 - L2 Version 3
Chandra X-Ray Center

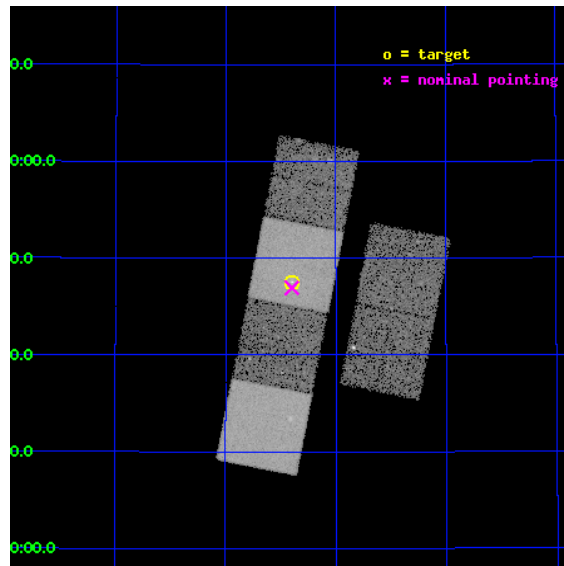
L2 Processing Date : Sep 16 2012

Contents

1	Front	2
2	OBI	3
2.1	OBI	3
2.1.1	Images	3
2.1.2	Bias	3
2.1.3	Parameters	4
2.1.4	Events	4
2.2	Compared Parameters	5
2.3	Aspect	6
2.4	Star Slots	9
2.4.1	Slot 3	9
2.4.2	Slot 4	10
2.4.3	Slot 5	11
2.4.4	Slot 6	12
2.4.5	Slot 7	13
2.5	FID Slots	14
2.5.1	Slot 0	14
2.5.2	Slot 1	15
2.5.3	Slot 2	16
A	Summary	17
A.1	Status	17
A.2	Comments	17

1 Front

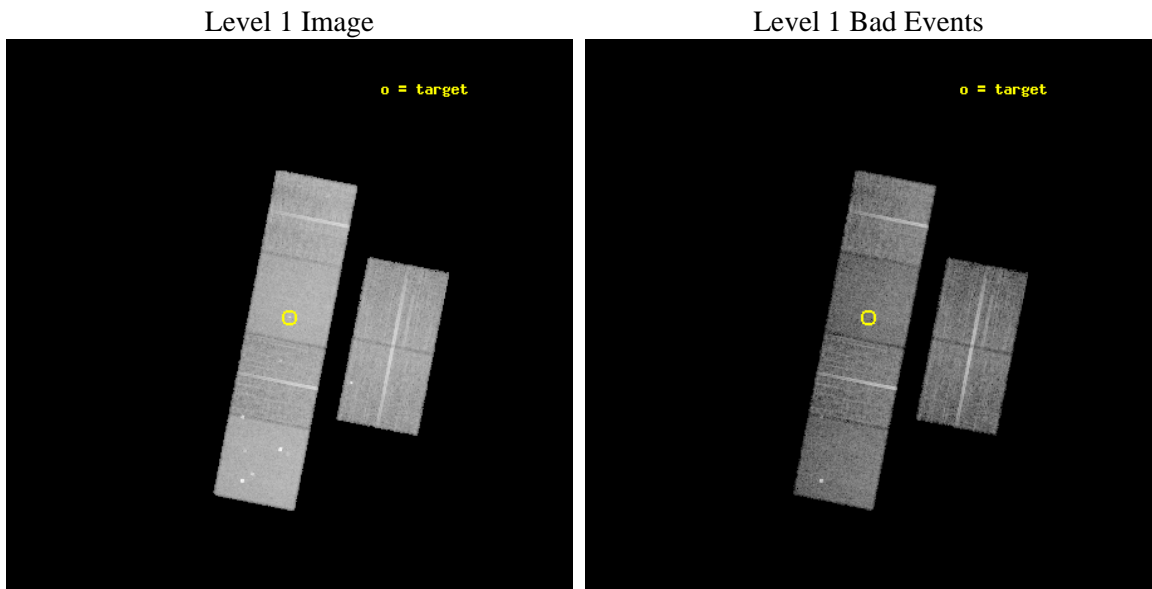
seq_num	700379	Sequence number
obs_id	2189	Observation id
title	HUNTING THE AGN CORES AND JETS IN FRI RADIO GALAXIES	Proposal titl
observer	Prof Diana Worrall	Principal investigator
object	B2 0326+39	Source name
dtcycle	0	
cycle	P	events from which exps? Prim/Second/Both
ra_targ	52.349583	Observer's specified target RA [deg]
dec_targ	39.792222	Observer's specified target Dec [deg]
ra_nom	52.349765568111	Nominal RA [deg]
dec_nom	39.782394952461	Nominal Dec [deg]
roll_nom	281.11781419284	Nominal Roll [deg]
revision	3	Processing version of data
ontime	15823.774356663	Sum of GTIs [s]
livetime	15623.404197826	Livetime [s]
ontime2	15823.81536676	Sum of GTIs [s]
ontime3	15823.651236668	Sum of GTIs [s]
ontime5	15823.73331666	Sum of GTIs [s]
ontime6	15823.692276672	Sum of GTIs [s]
ontime7	15823.774356663	Sum of GTIs [s]
ontime8	15820.369096816	Sum of GTIs [s]
l2events	164420	Number of level 2 events



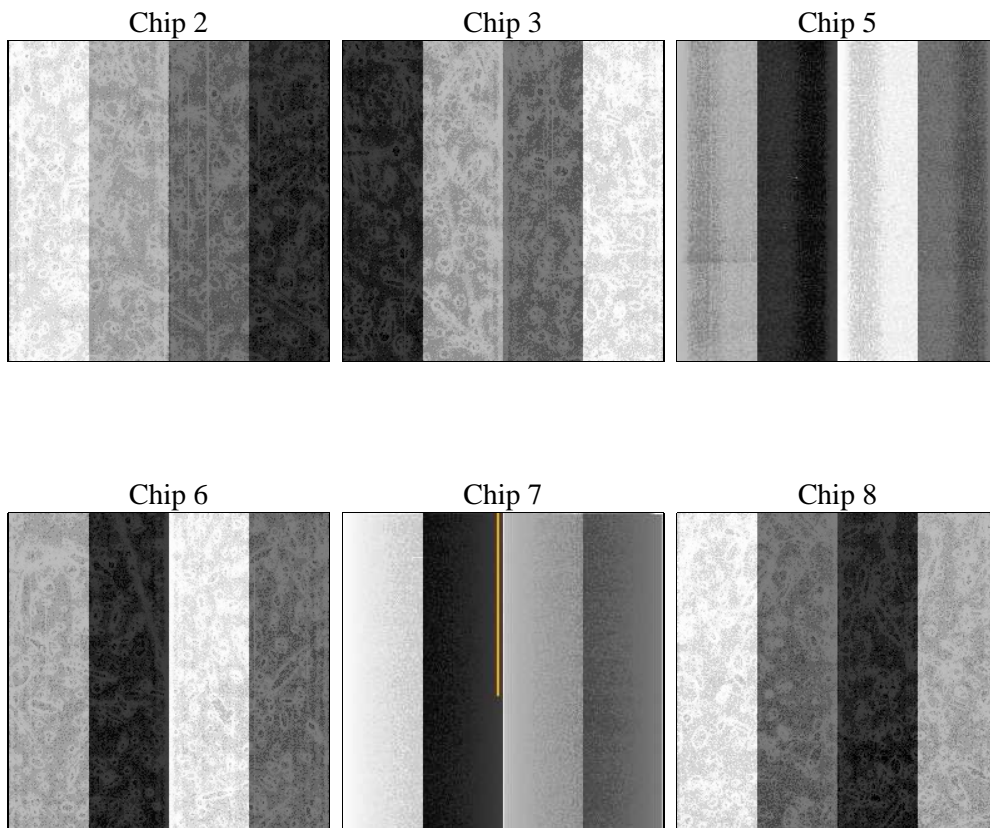
2 OBI

2.1 OBI

2.1.1 Images



2.1.2 Bias



2.1.3 Parameters

obi_num	0	Obi number	sched_exp_time	16100.000000	[s] Scheduled observation exposure time
ascdsver	8.4.5	Processing system revision	ontime	15823.774356663	Sum of GTIs [s]
caldsver	4.5.1.1	 	ontime2	15823.81536676	Sum of GTIs [s]
date	2012-09-16T03:03:20	Date and time of file creation	ontime3	15823.651236668	Sum of GTIs [s]
revision	3	Processing version of data	ontime5	15823.73331666	Sum of GTIs [s]
			ontime6	15823.692276672	Sum of GTIs [s]
			ontime7	15823.774356663	Sum of GTIs [s]
			ontime8	15820.369096816	Sum of GTIs [s]
			l1events	703308	Number of level 1 events

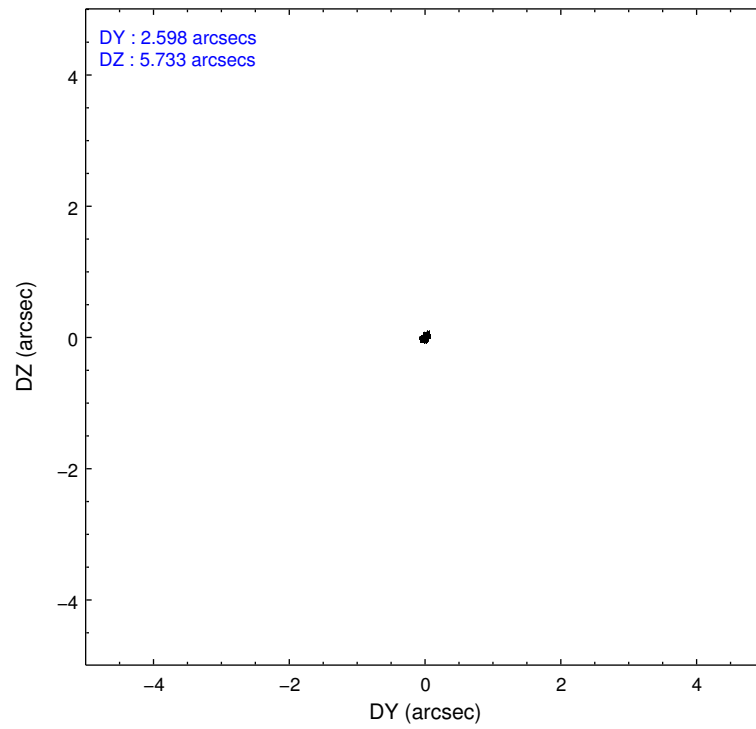
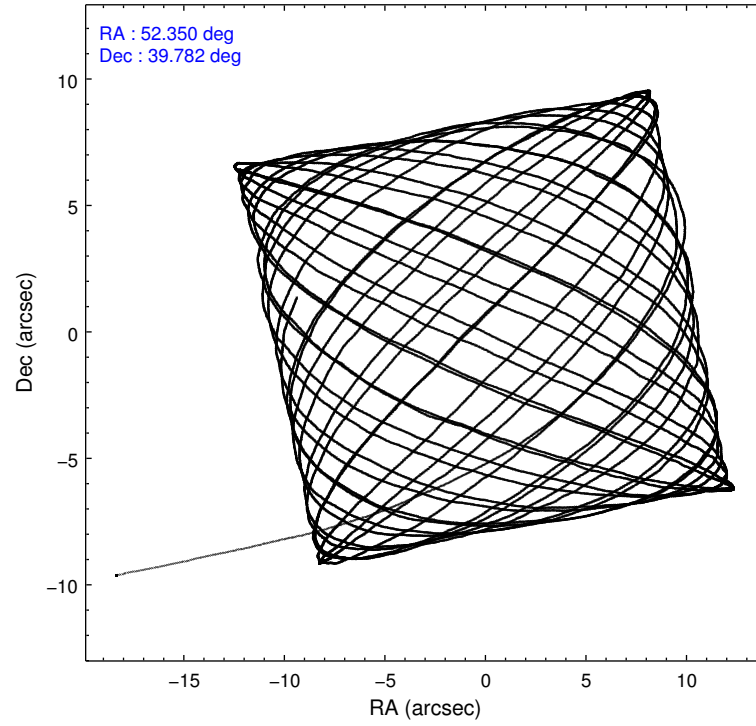
2.1.4 Events

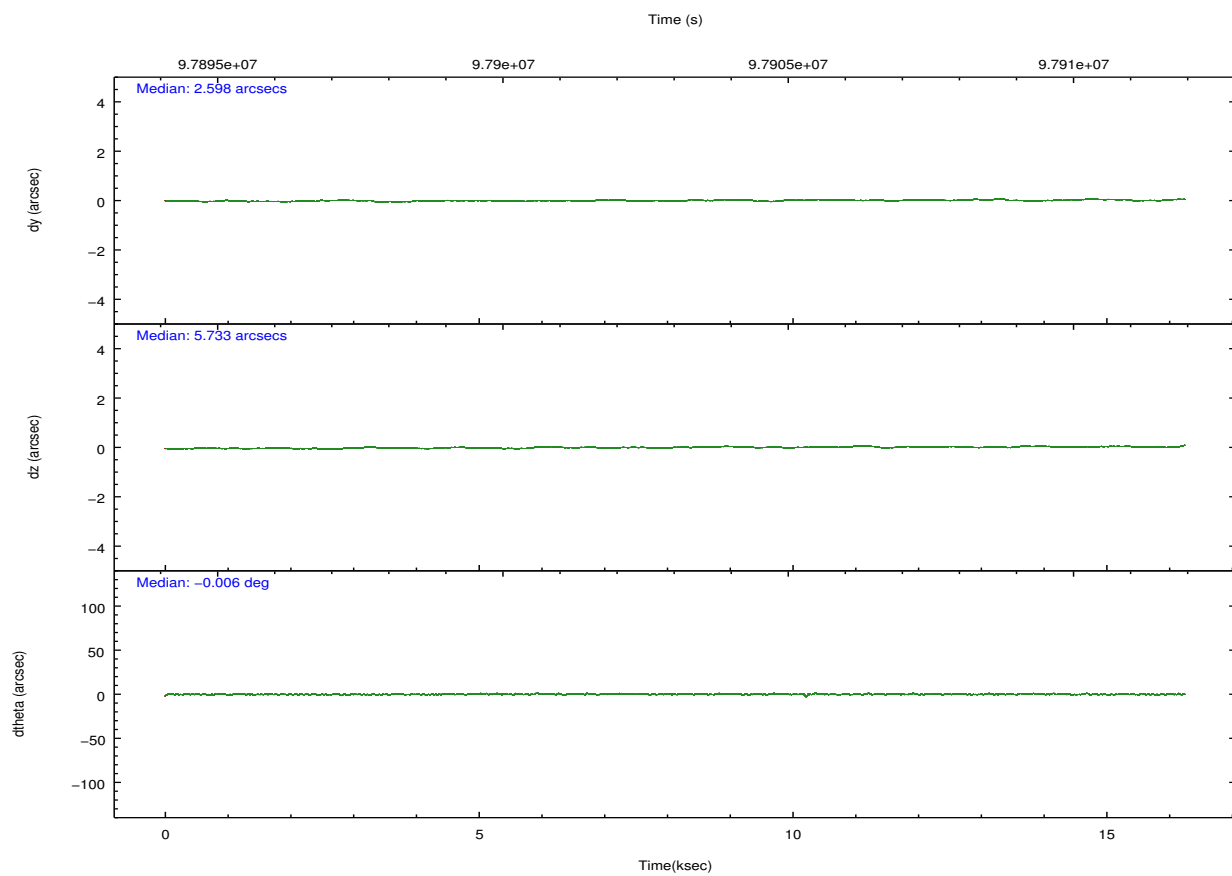
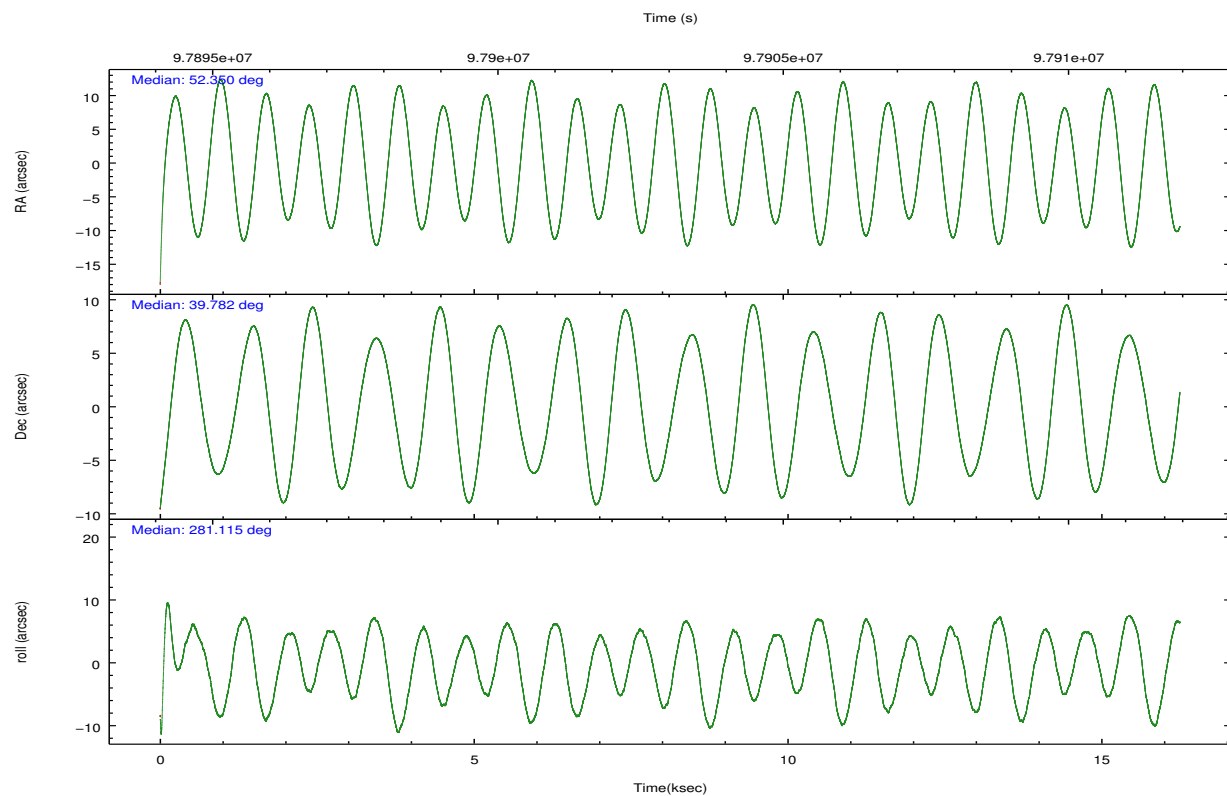
	ccd 2	ccd 3	ccd 5	ccd 6	ccd 7	ccd 8		ccd 2	ccd 3	ccd 5	ccd 6	ccd 7	ccd 8
level 1 events	99462	95533	147371	99715	134403	126824	grade 0 events	5224	4740	10259	5170	6527	7877
rejected events	87791	84674	75430	87992	73981	102235		5%	4%	6%	5%	4%	6%
rejected %	88%	88%	51%	88%	55%	80%	grade 1 events	38	37	193	55	126	71
								0%	0%	0%	0%	0%	0%
							grade 2 events	2390	2128	20174	2197	11931	5162
								2%	2%	13%	2%	8%	4%
							grade 3 events	1083	1007	3490	1122	5536	2570
								1%	1%	2%	1%	4%	2%
							grade 4 events	1053	1021	3068	1063	5568	2408
								1%	1%	2%	1%	4%	1%
							grade 5 events	3401	3651	10823	4124	11919	5101
								3%	3%	7%	4%	8%	4%
							grade 6 events	1924	1972	34985	2178	30885	6576
								1%	2%	23%	2%	22%	5%
							grade 7 events	84349	80977	64379	83806	61911	97059
								84%	84%	43%	84%	46%	76%

2.2 Compared Parameters

Parameter	Planned	Actual	Parameter	Planned	Actual
Instrument	ACIS	ACIS	Obspar format version number	7	7
Detector	ACIS-235678	ACIS-235678	Obspar file type	PREDICTED	ACTUAL
Grating	NONE	NONE	Obspar update status	NONE	UPDATED
Data mode	FAINT	FAINT	Number of optional ACIS chips dropped	0	0
Observation mode	POINTING	POINTING	On-chip summing requested	N	N
[deg] Pointing RA	52.326136	52.34976556811121	Subarray requested	NONE	NONE
[deg] Pointing Dec	39.802822	39.78239495246089	Alternating exposures requested	N	N
[deg] Pointing Roll	280.976336	281.1178141928374	[s] Primary exposure time	0.000000	3.2
[mm] SIM focus pos	-0.684267	-0.6828225247311905			
[mm] SIM defocus	0	0.001444936568705701			
[mm] SIM translation stage pos	-190.132523	-190.1400660498719			
[mm] SIM translation stage offset	0	0.00754346686406393			
[s] Observation start time (MET)	97895040.184000	97894040.849233			
Observation start date	2001-02-07T01:02:56	2001-02-07T00:47:20			
[s] Observation end time (MET)	97911140.184000	97911627.79991101			
Observation end date	2001-02-07T05:31:16	2001-02-07T05:40:27			
Read mode	TIMED	TIMED			

2.3 Aspect



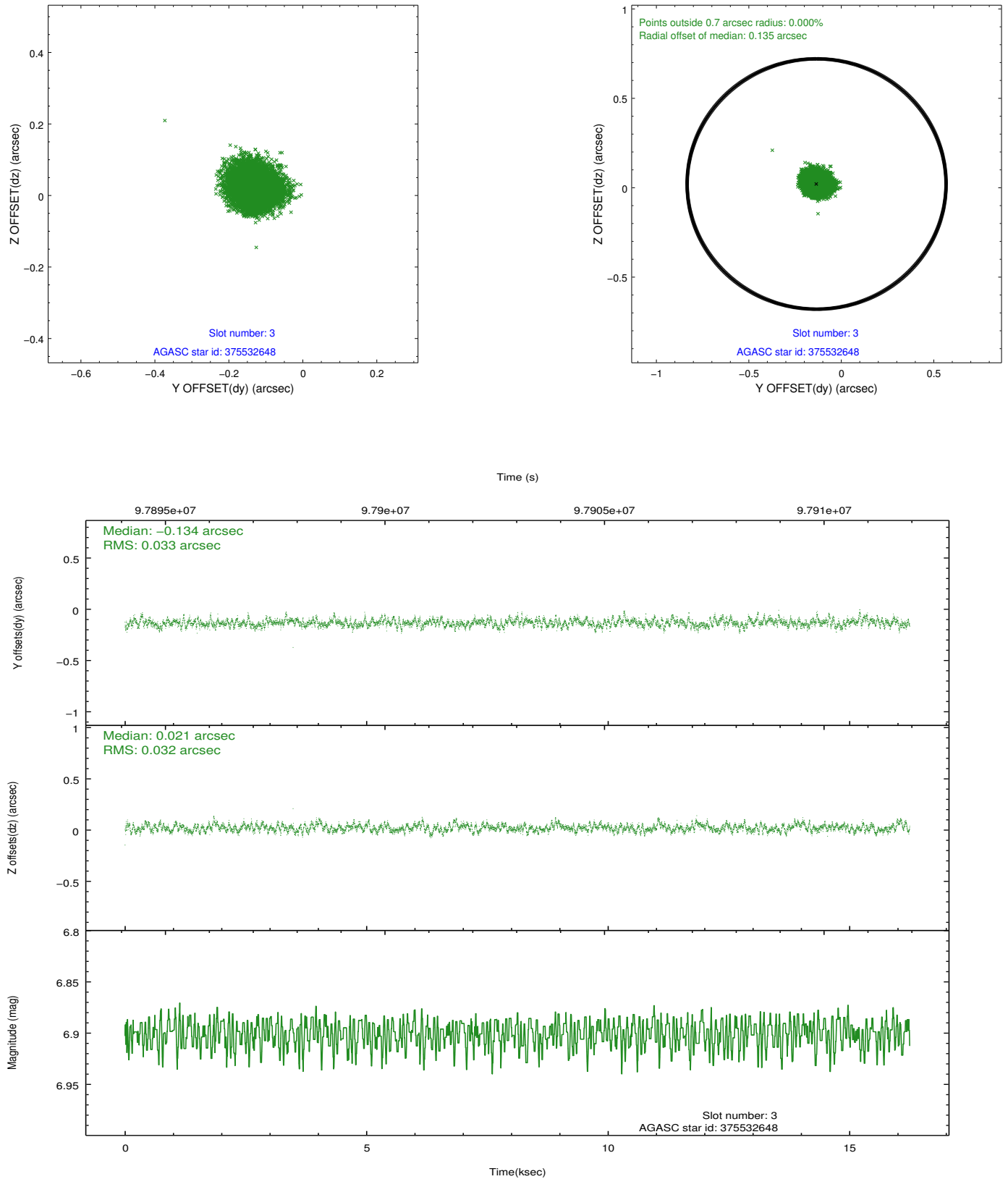


Slot Statistics

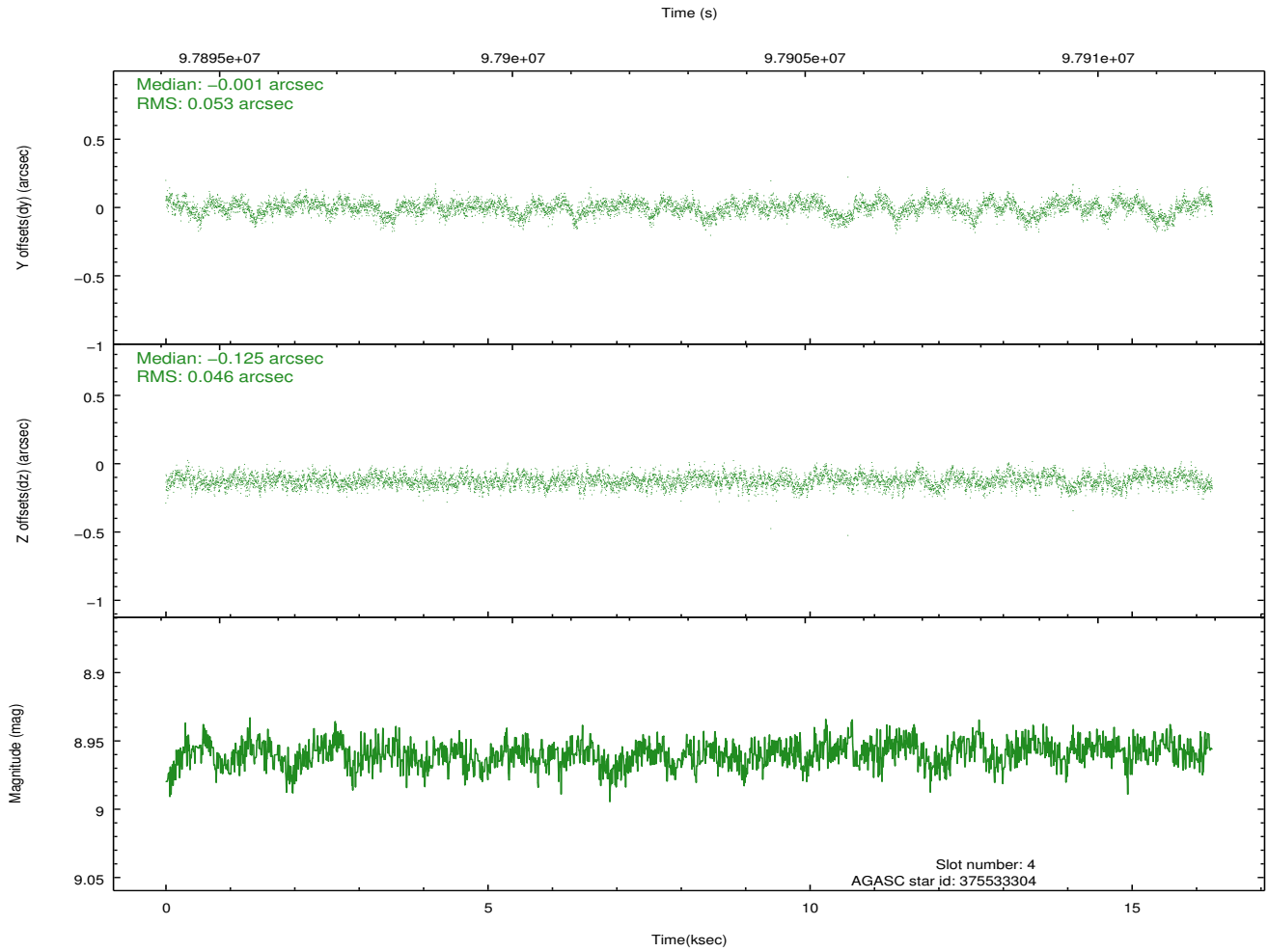
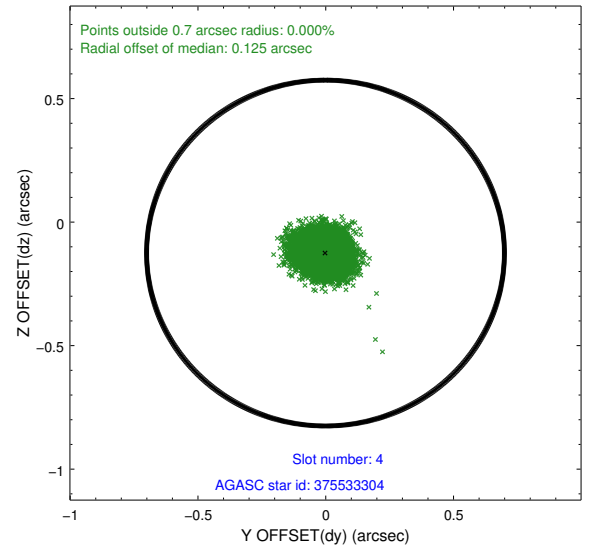
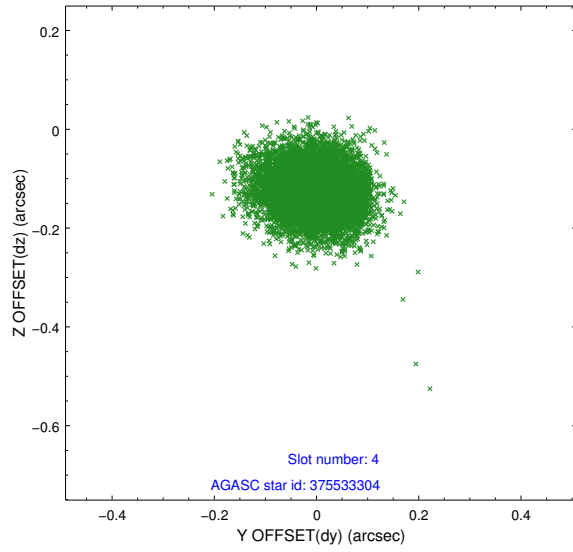
slot	status	id	mag	n_pts	med_dy	med_dz	dr1	dr2	ra	dec	mean_y	mean_z
0	FID	ACIS-S-1	7.19	3963	0.002	-0.042	0.007	0.014	0.000000	0.000000	940.82	-1722.53
1	FID	ACIS-S-5	7.24	3963	-0.001	0.005	0.007	0.012	0.000000	0.000000	-1808.04	174.79
2	FID	ACIS-S-6	7.35	3963	-0.023	0.048	0.008	0.013	0.000000	0.000000	406.05	819.11
3	GUIDE	375532648	6.90	7926	-0.134	0.021	0.049	0.079	52.125802	40.171032	-1406.87	-288.94
4	GUIDE	375533304	8.96	7923	-0.001	-0.125	0.075	0.120	51.833632	40.116937	-1372.03	-1115.69
5	GUIDE	375669392	8.71	7922	0.149	0.098	0.065	0.103	52.767011	39.644684	788.70	1091.67
6	GUIDE	375530800	9.44	7922	-0.026	-0.028	0.073	0.118	52.386399	40.002494	-673.96	299.70
7	GUIDE	375654176	9.50	7850	0.015	0.033	0.088	0.143	52.558578	40.102551	-938.22	833.58

2.4 Star Slots

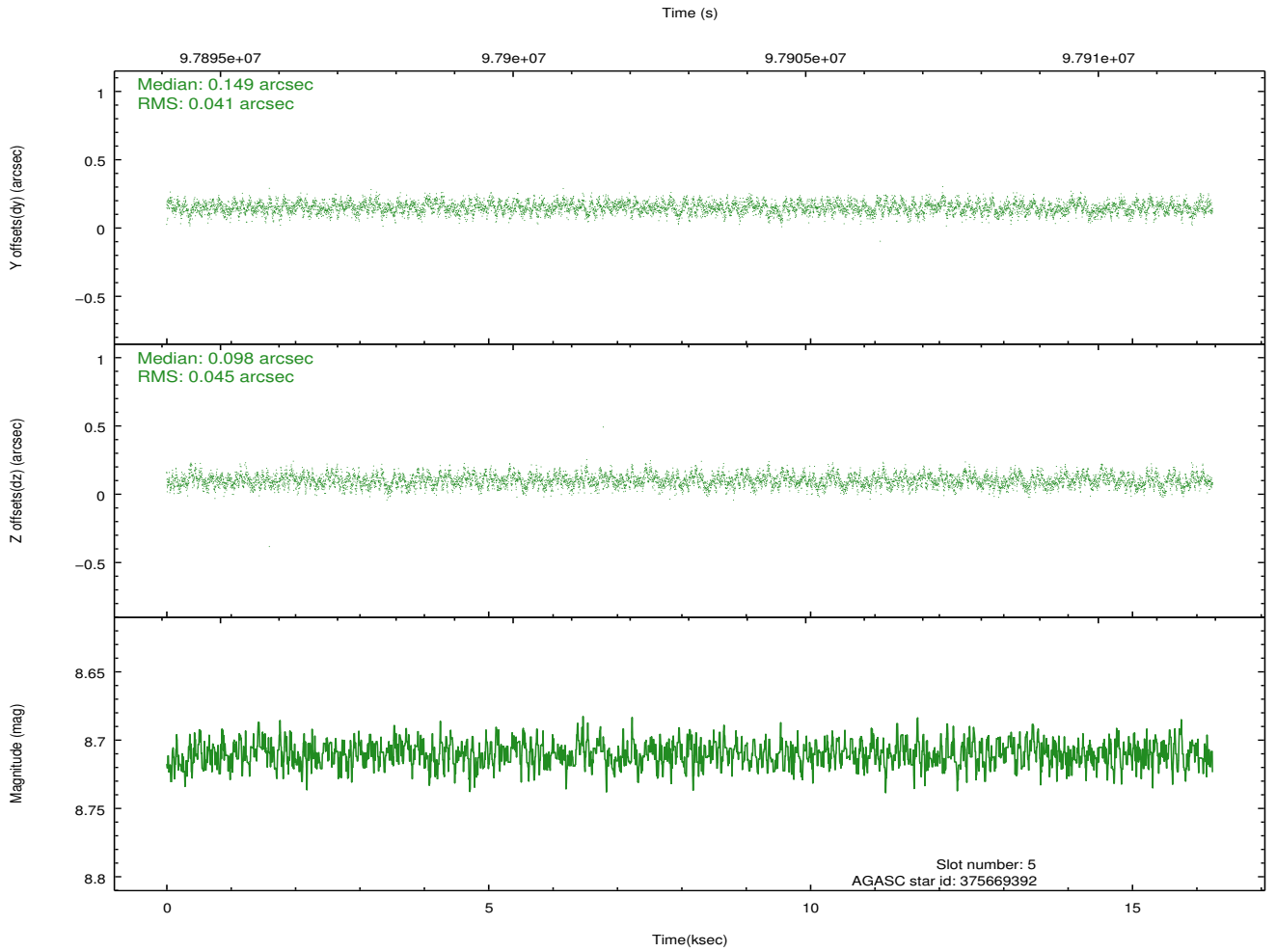
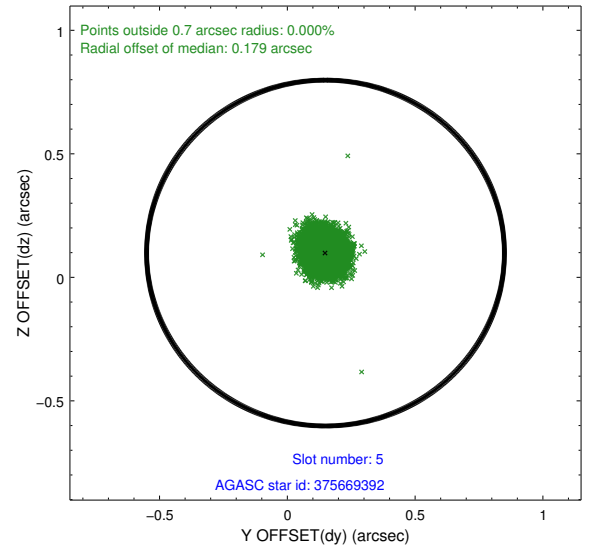
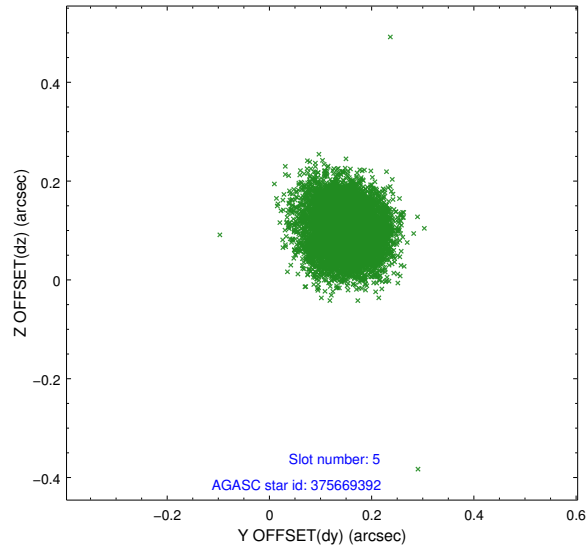
2.4.1 Slot 3



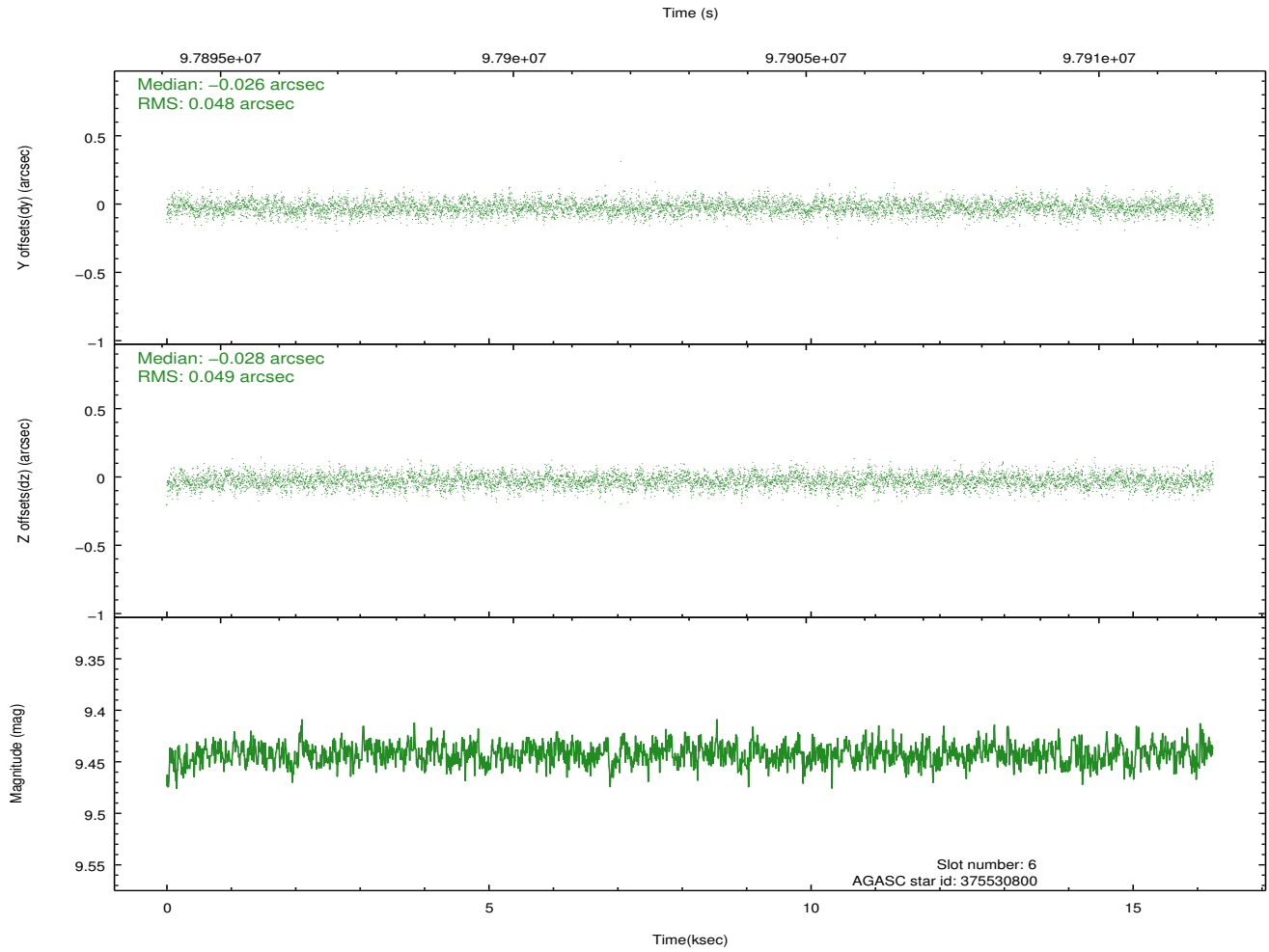
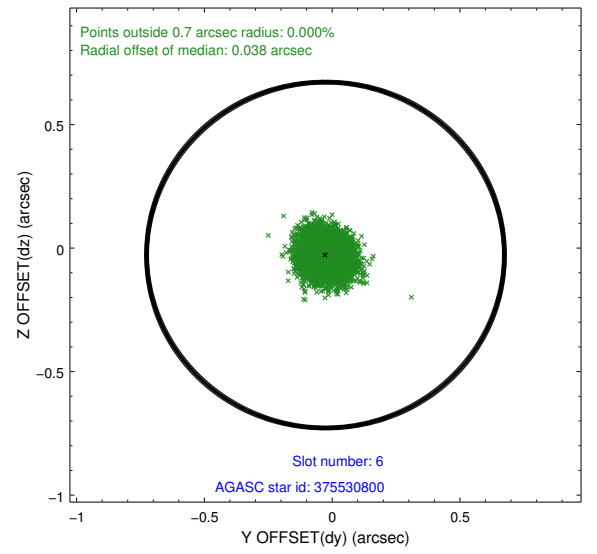
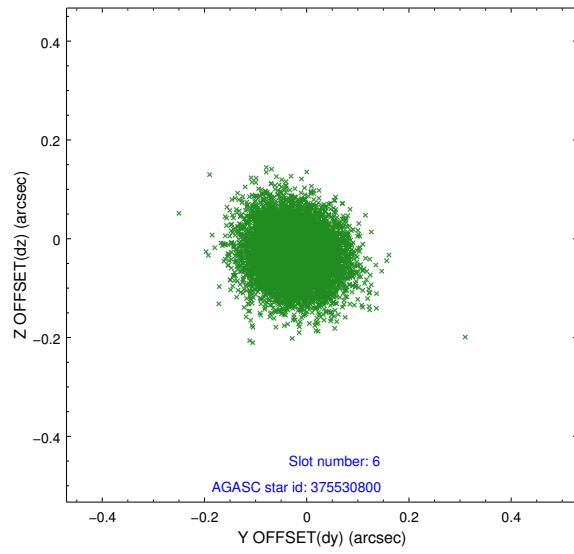
2.4.2 Slot 4



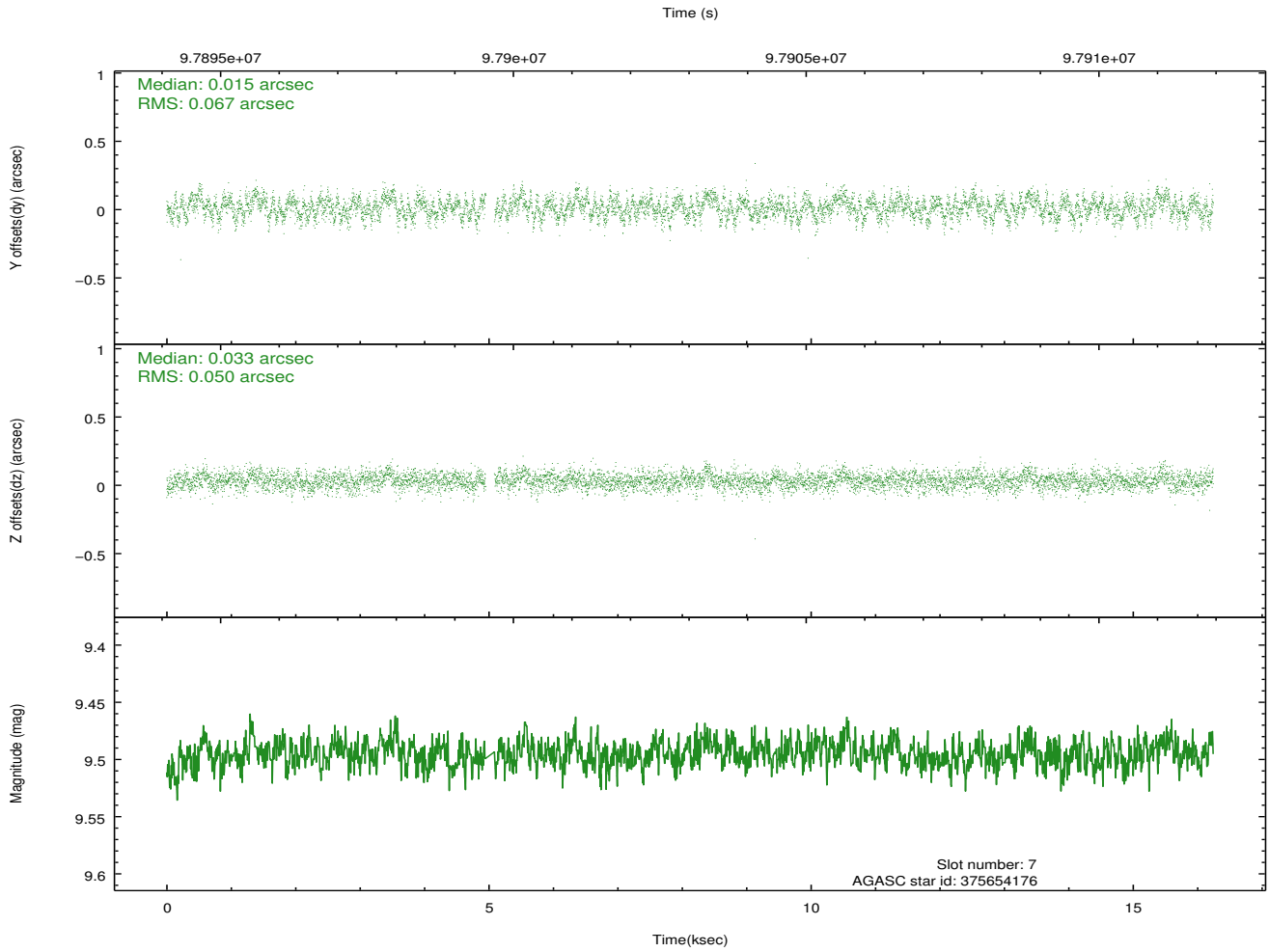
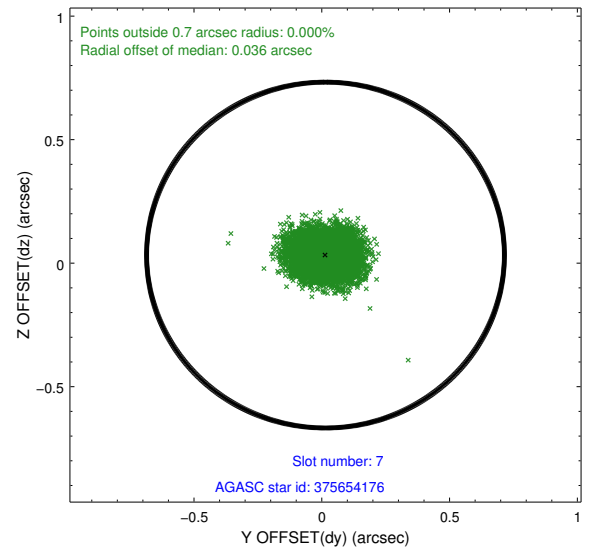
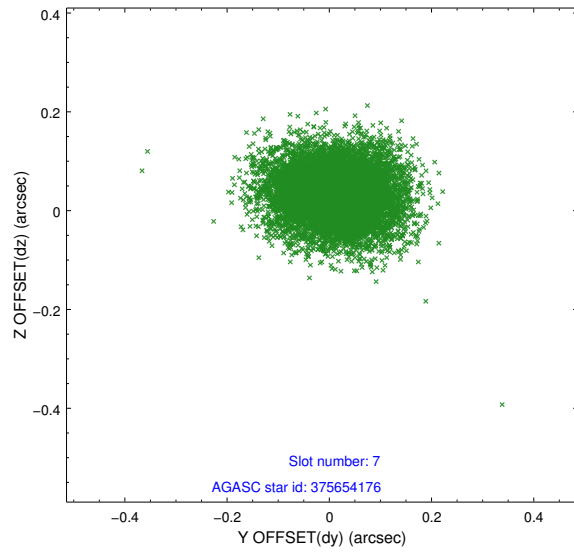
2.4.3 Slot 5



2.4.4 Slot 6

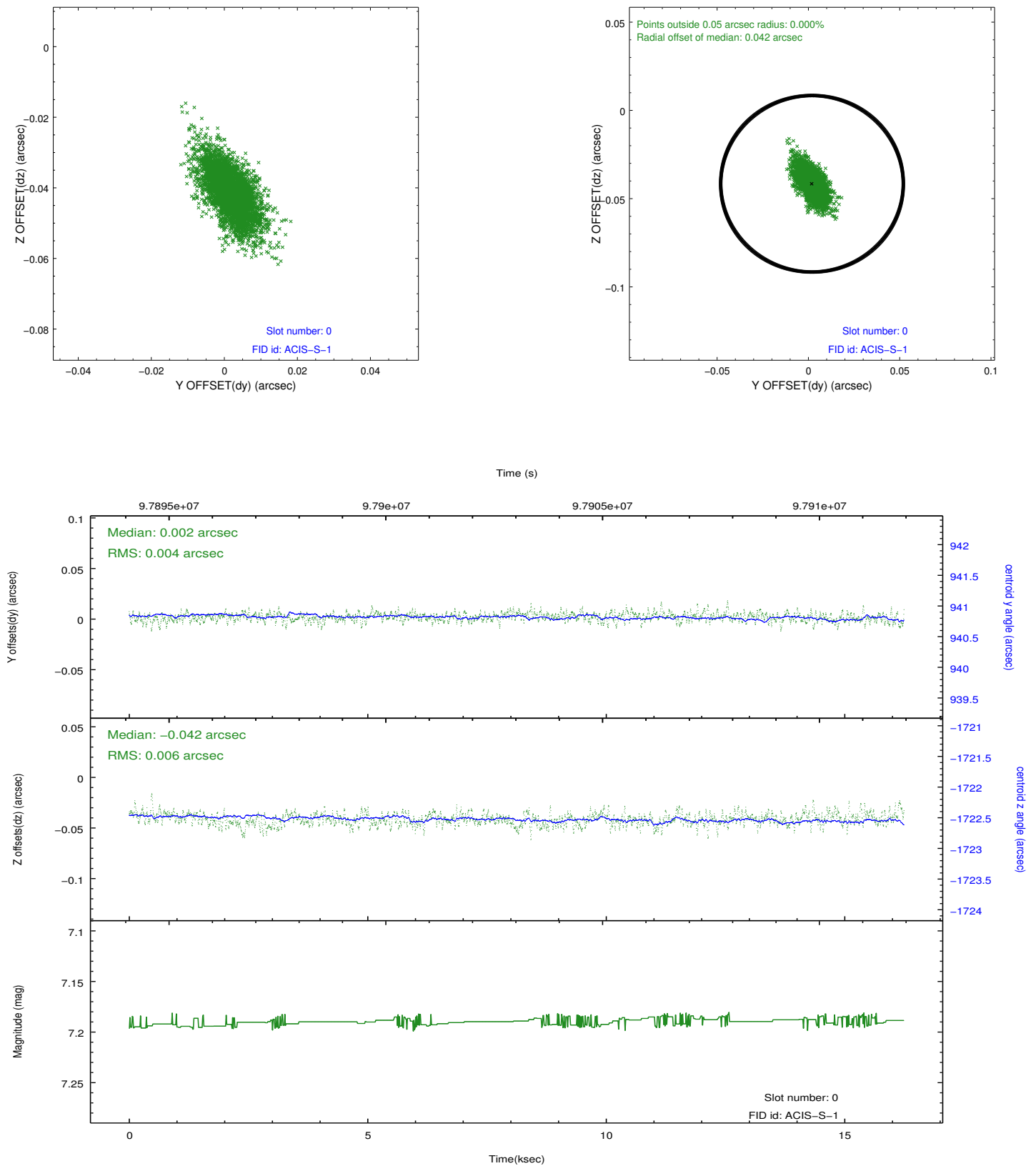


2.4.5 Slot 7

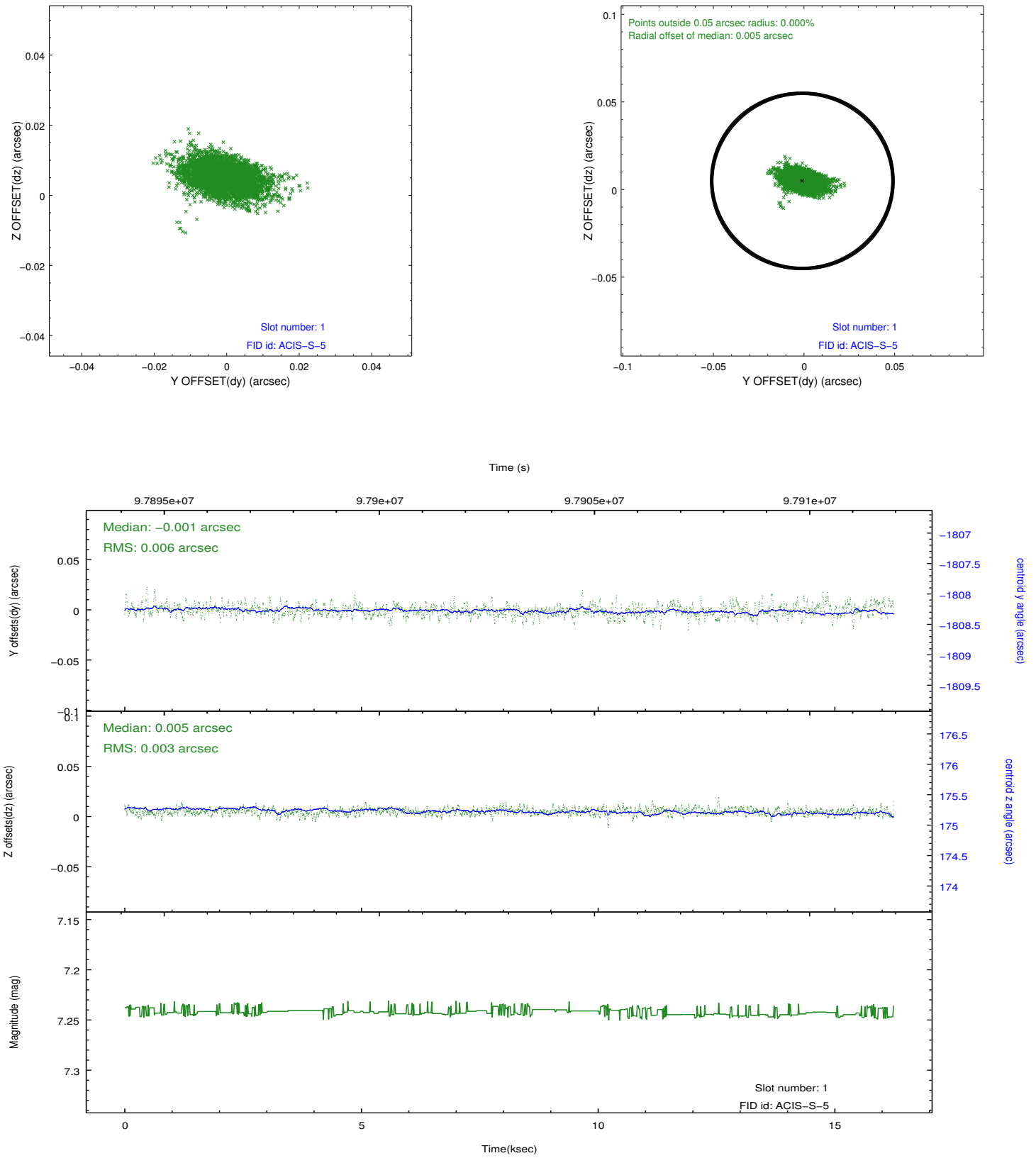


2.5 FID Slots

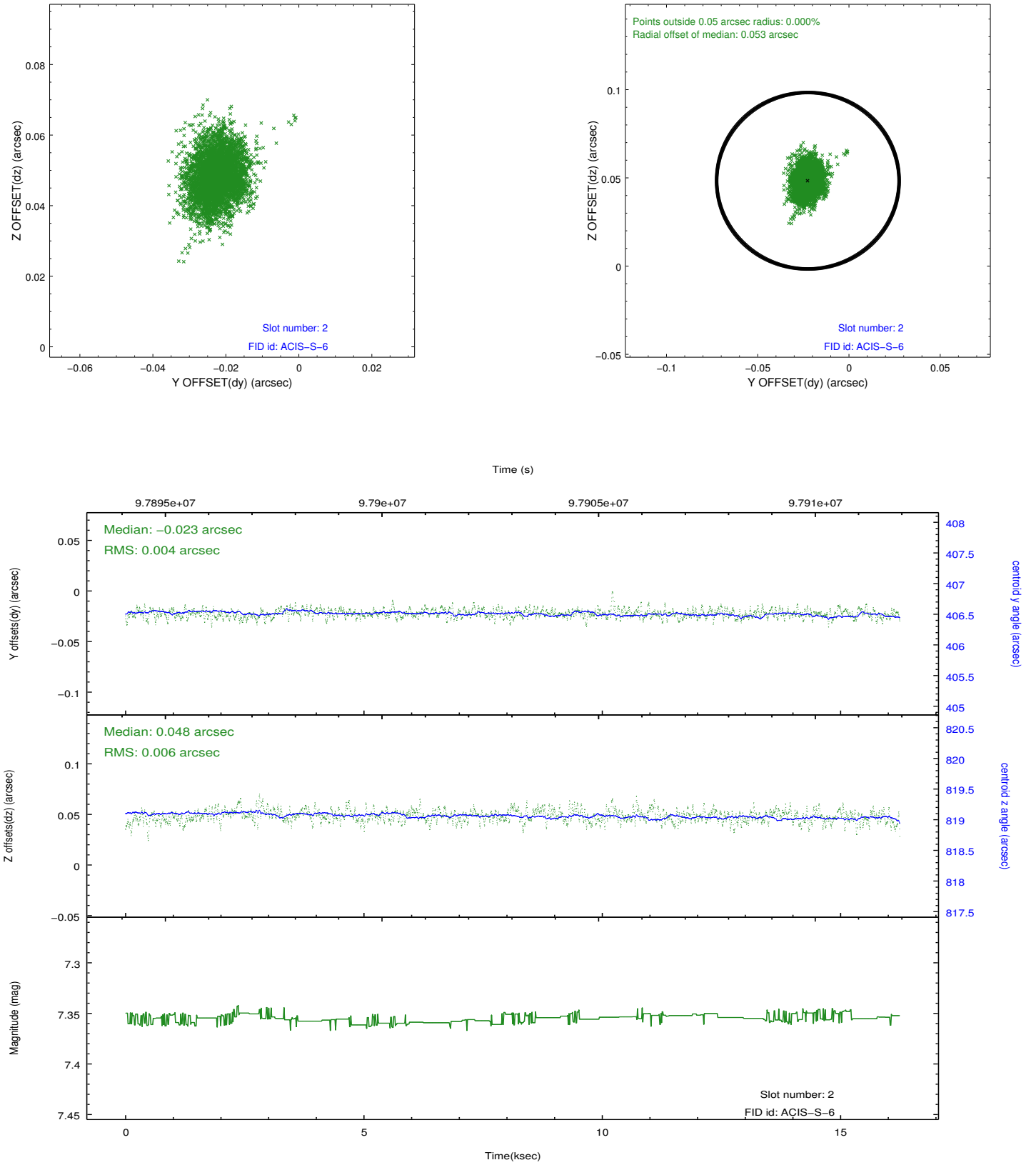
2.5.1 Slot 0



2.5.2 Slot 1



2.5.3 Slot 2



A Summary

A.1 Status

V&V Scientist	Jen Lauer
V&V Date (YYYY-MM-DD)	2012.09.19
V&V Edition	1
V&V Disposition and Status	OK
V&V Charge Time	15.824

A.2 Comments