

V&V Reference Report

L2 ASCDS Version : 7.6.10

Observation 2173 - L2 Version 001
Chandra X-Ray Center

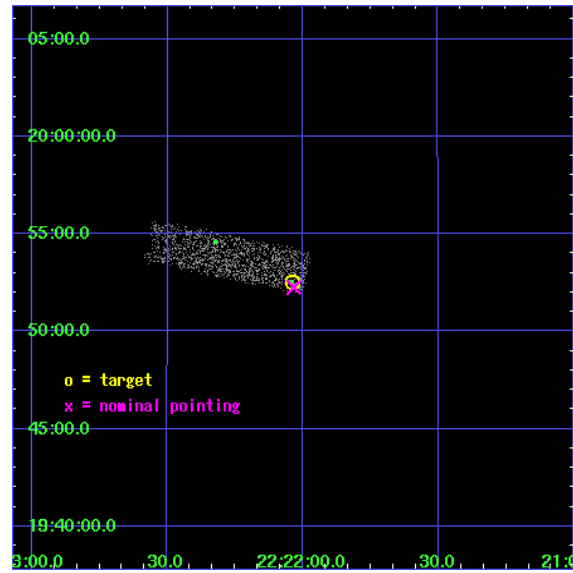
L2 Processing Date : Jan 12 2007

Contents

1	Front	2
2	OBI	3
2.1	OBI	3
2.1.1	Images	3
2.1.2	Bias	3
2.1.3	Parameters	4
2.1.4	Events	4
2.2	Compared Parameters	5
2.3	Aspect	6
2.4	Star Slots	9
2.4.1	Slot 3	9
2.4.2	Slot 4	10
2.4.3	Slot 5	11
2.4.4	Slot 6	12
2.4.5	Slot 7	13
2.5	FID Slots	14
2.5.1	Slot 0	14
2.5.2	Slot 1	15
2.5.3	Slot 2	16
3	Point Sources	17
A	Summary	18
A.1	Status	18
A.2	Comments	18

1 Front

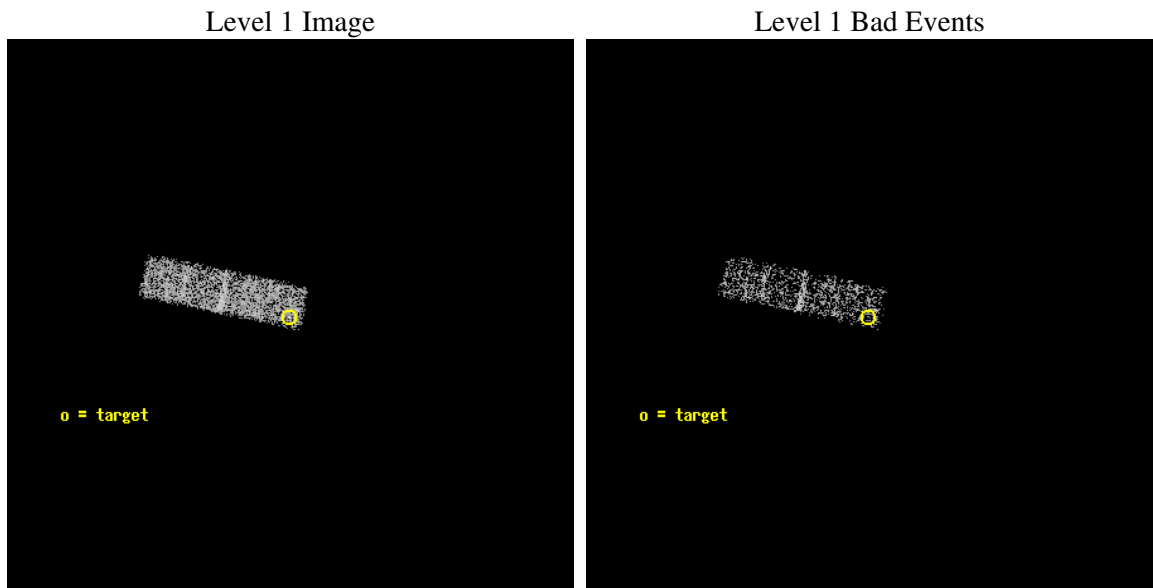
seq_num	700363
obs_id	2173
title	RED QUASARS AND THE X-RAY BACKGROUND
observer	Dr. BELINDA WILKES
object	2MASSJ222202+1952
dtcycle	0
cycle	P
ra_targ	335.509167
dec_targ	19.875417
ra_nom	335.50825824567
dec_nom	19.870979231955
roll_nom	281.75022963955
revision	2
ontime	2534.3999905586
livetime	2410.7295639291
ontime3	2534.3999905586
l2events	1658



2 OBI

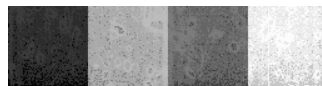
2.1 OBI

2.1.1 Images



2.1.2 Bias

Chip 3



2.1.3 Parameters

obi_num	5
ascdsver	7.6.10
caldbver	3.3.0
date	2007-01-12T09:06:05
revision	2

sched_exp_time	2200.000000
ontime	2534.3999905586
ontime3	2534.3999905586
l1events	9442

2.1.4 Events

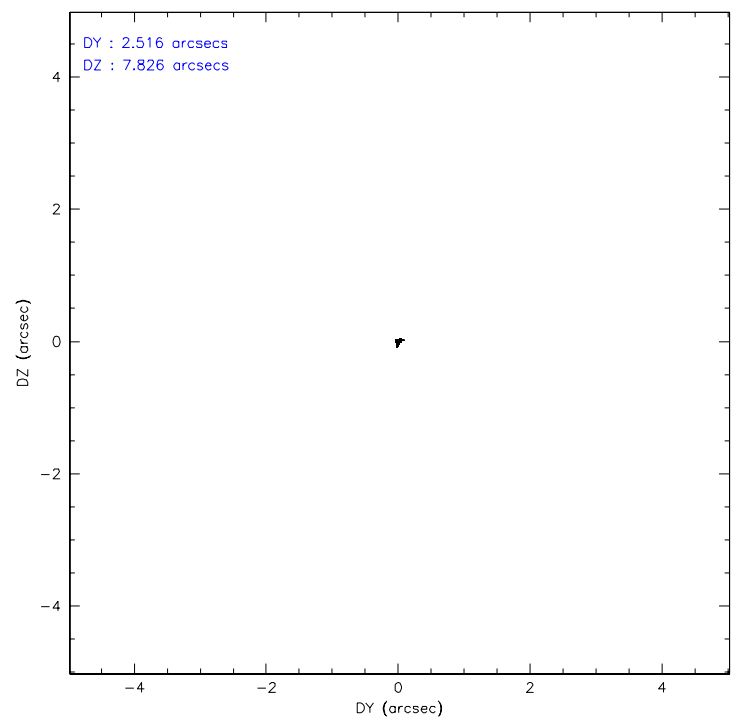
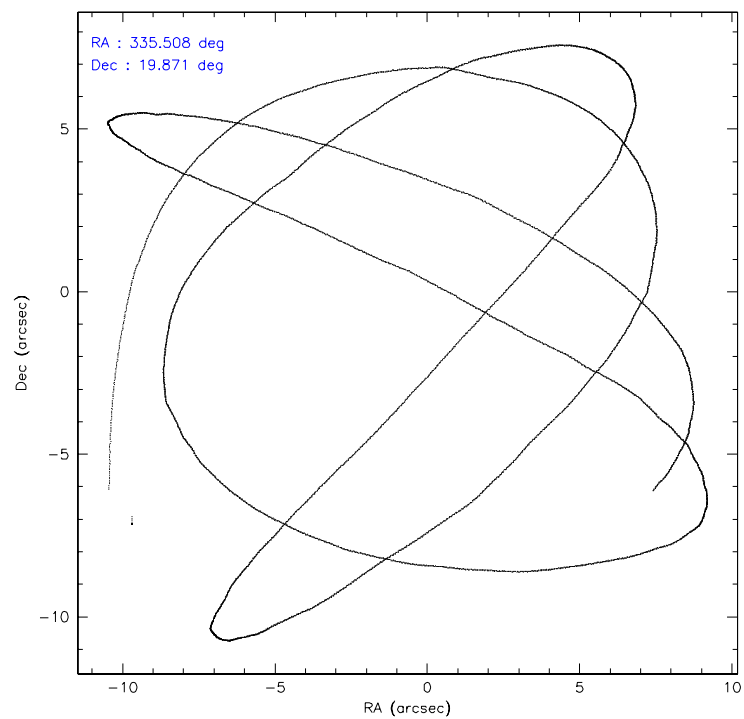
	ccd 3
level 1 events	9442
rejected events	7645
rejected %	80%

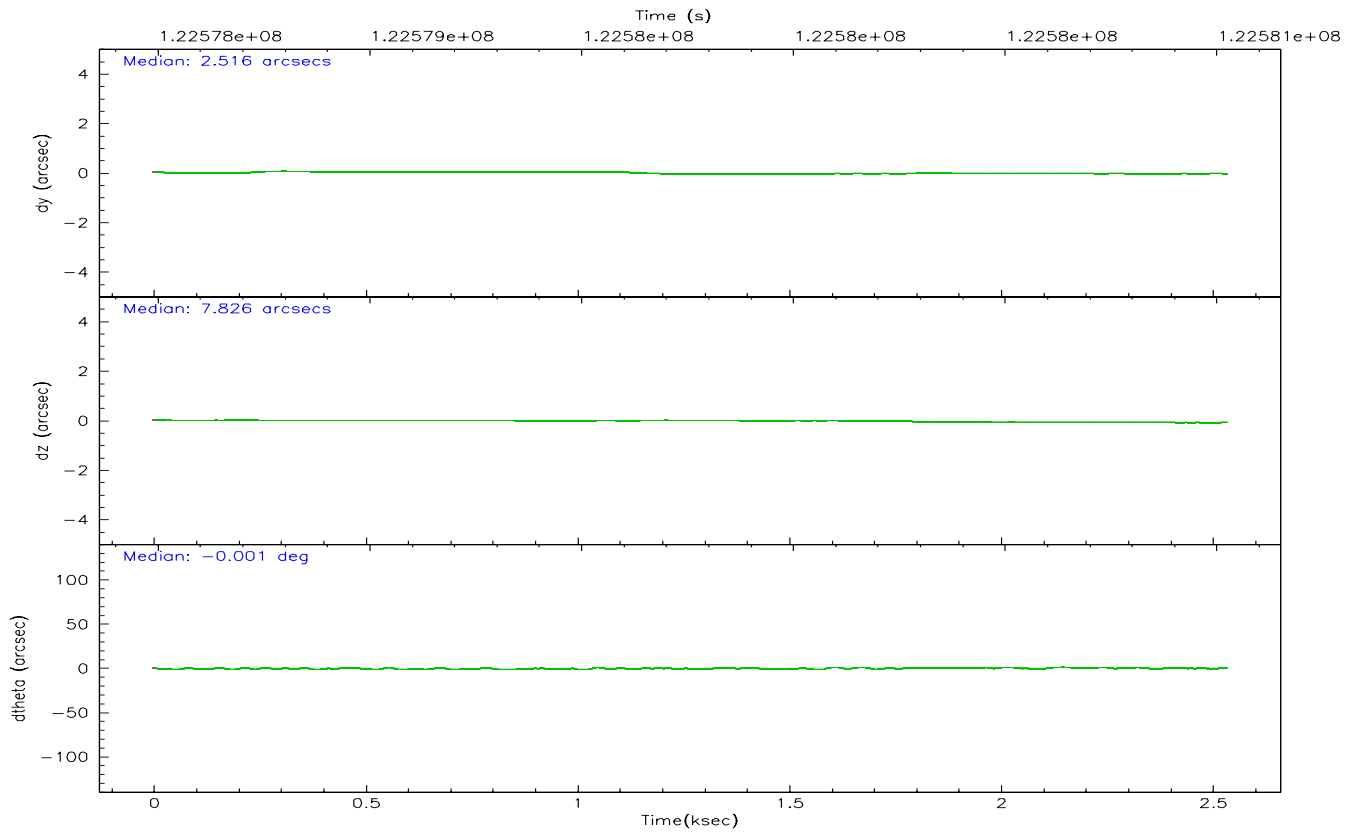
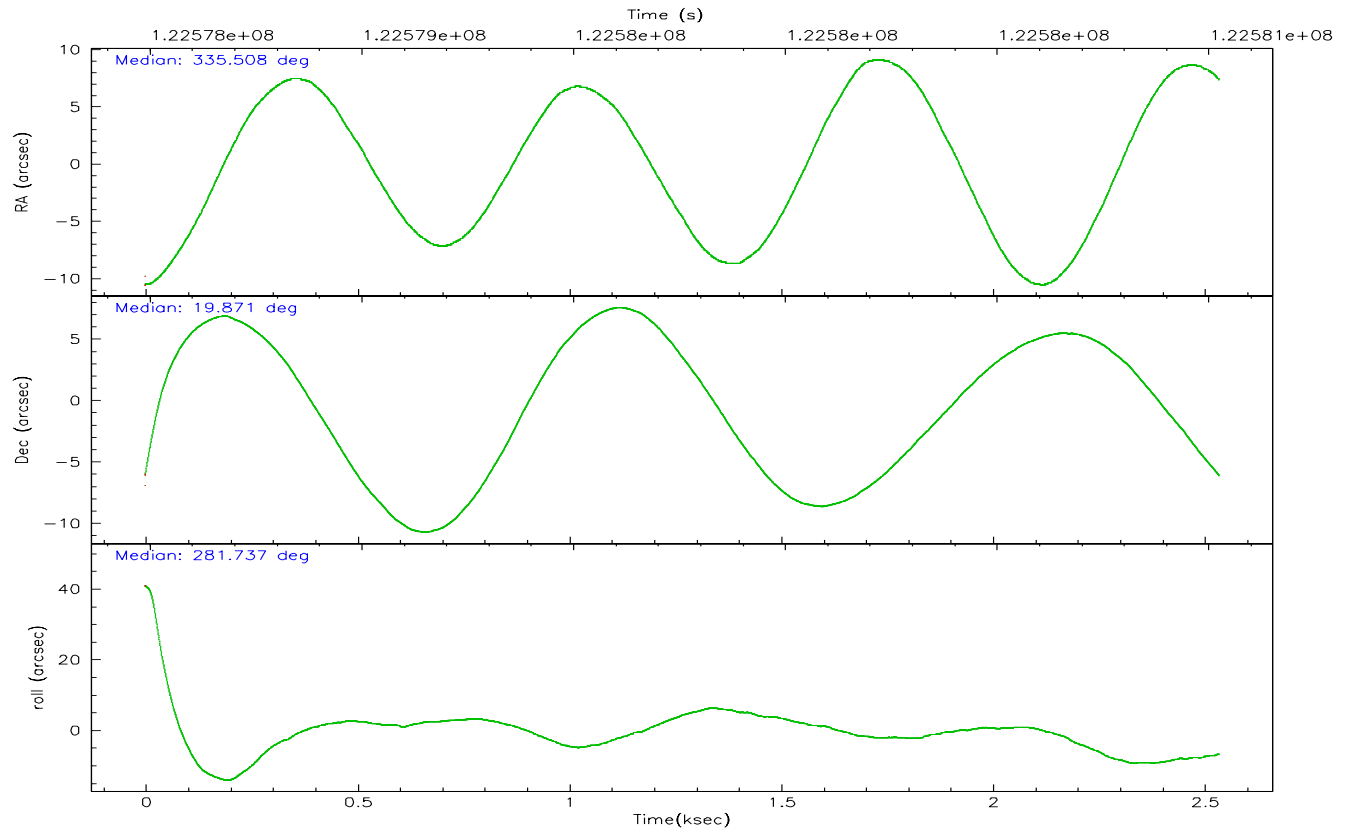
	ccd 3
grade 0 events	822
	8%
grade 1 events	1
	0%
grade 2 events	569
	6%
grade 3 events	131
	1%
grade 4 events	141
	1%
grade 5 events	211
	2%
grade 6 events	330
	3%
grade 7 events	7237
	76%

2.2 Compared Parameters

Parameter	Planned	Actual	Parameter	Planned	Actual
Instrument	ACIS	ACIS	Obspar format version number	6	6
Detector	ACIS-3	ACIS-3	Obspar file type	PREDICTED	ACTUAL
Grating	NONE	NONE	Obspar update status	NONE	UPDATED
Data mode	VFAINT	VFAINT	Number of optional ACIS chips dropped	0	0
Observation mode	POINTING	POINTING	On-chip summing requested	N	N
Pointing RA	335.488728	335.5082582456702	Subarray requested	1/4	1/4
Pointing Dec	19.891225	19.87097923195479	Subarray start row	0	769
Pointing Roll	281.547940	281.7502296395498	Subarray row count	1024	256
SIM focus pos (mm)	-0.782348	-0.7809083437167272	Alternating exposures requested	N	N
SIM defocus (mm)	0	0.001439871863259334	Primary exposure time	0.000000	0.8
SIM translation stage pos (mm)	-233.592463	-233.5874344608287			
SIM translation stage offset (mm)	0	-0.005018542100998502			
Observation start time	122578821.184000	122577783.80306			
Observation start date	2001-11-19T17:39:17	2001-11-19T17:23:03			
Observation end time	122581021.184000	122581615.25321			
Observation end date	2001-11-19T18:15:57	2001-11-19T18:26:55			
Read mode	TIMED	TIMED			

2.3 Aspect



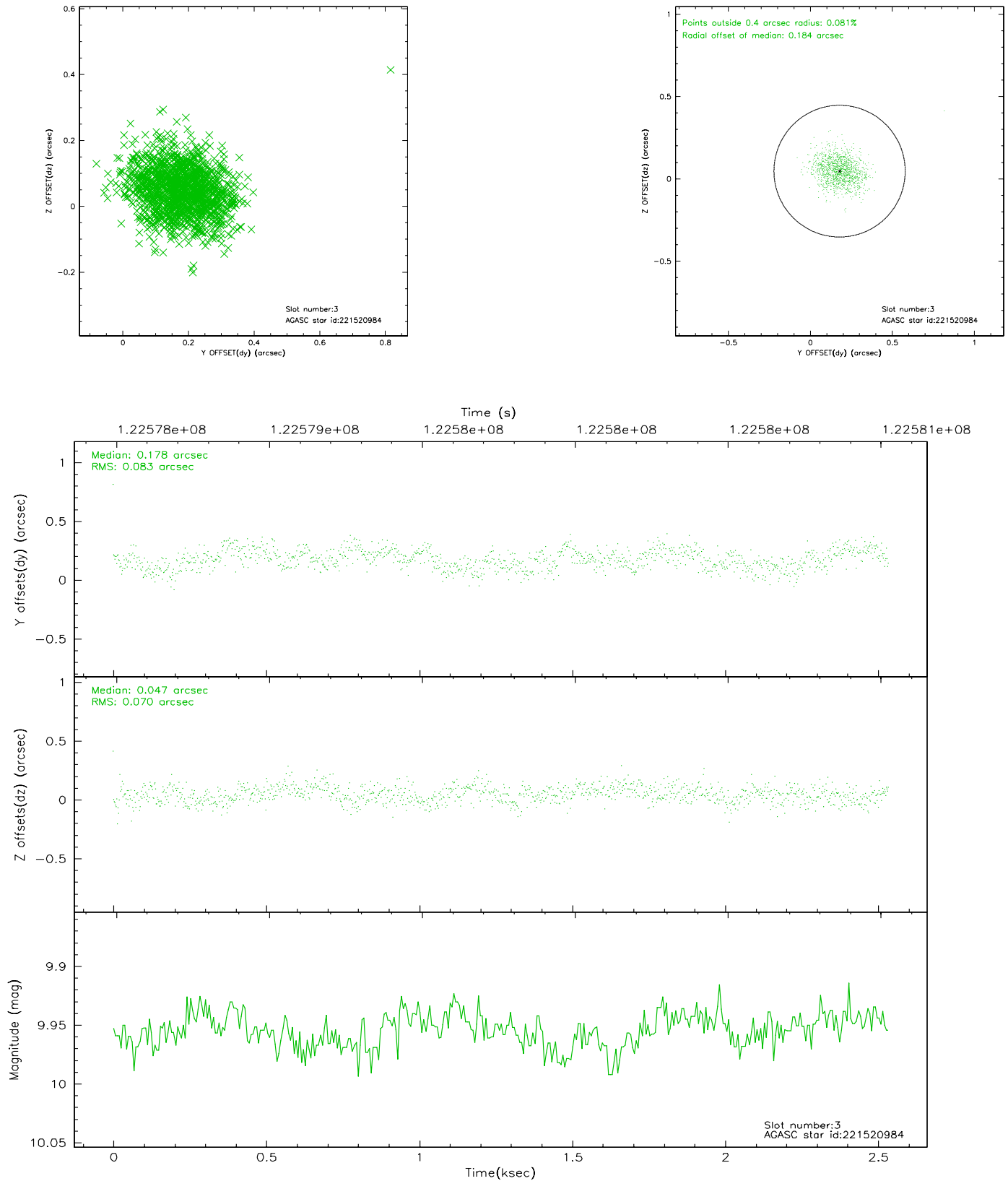


Slot Statistics

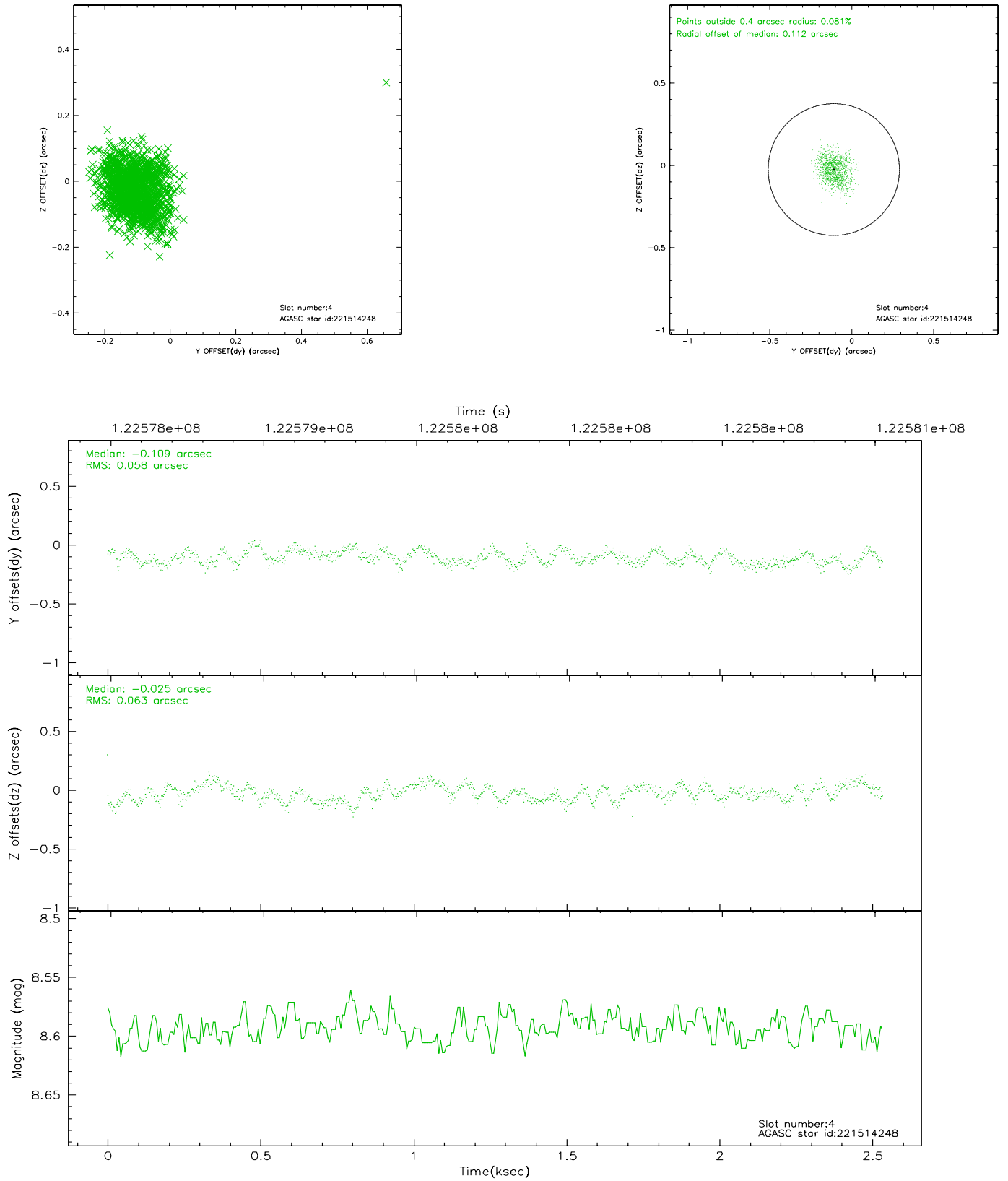
slot	status	id	mag	n_pts	med_dy	med_dz	dr1	dr2	ra	dec	mean_y	mean_z
0	FID	ACIS-I-1	7.24	619	-0.047	0.085	0.006	0.010	0.000000	0.000000	937.22	-831.16
1	FID	ACIS-I-5	7.23	619	0.006	0.031	0.006	0.011	0.000000	0.000000	-1809.38	1065.05
2	FID	ACIS-I-6	7.26	619	-0.050	-0.045	0.006	0.009	0.000000	0.000000	400.05	1712.33
3	GUIDE	221520984	9.95	1238	0.178	0.047	0.114	0.180	335.753306	19.593324	1231.03	664.49
4	GUIDE	221514248	8.59	1238	-0.109	-0.025	0.089	0.138	334.808098	19.800222	-142.33	-2323.35
5	GUIDE	221515368	10.26	1228	-0.079	-0.012	0.130	0.227	334.817041	20.235054	-1669.80	-1977.01
6	GUIDE	223220768	8.79	1238	-0.126	0.005	0.132	0.208	336.138894	20.276133	-922.94	2427.08
7	GUIDE	221524824	9.70	1237	0.131	-0.019	0.100	0.163	335.185669	19.540573	1031.09	-1258.20

2.4 Star Slots

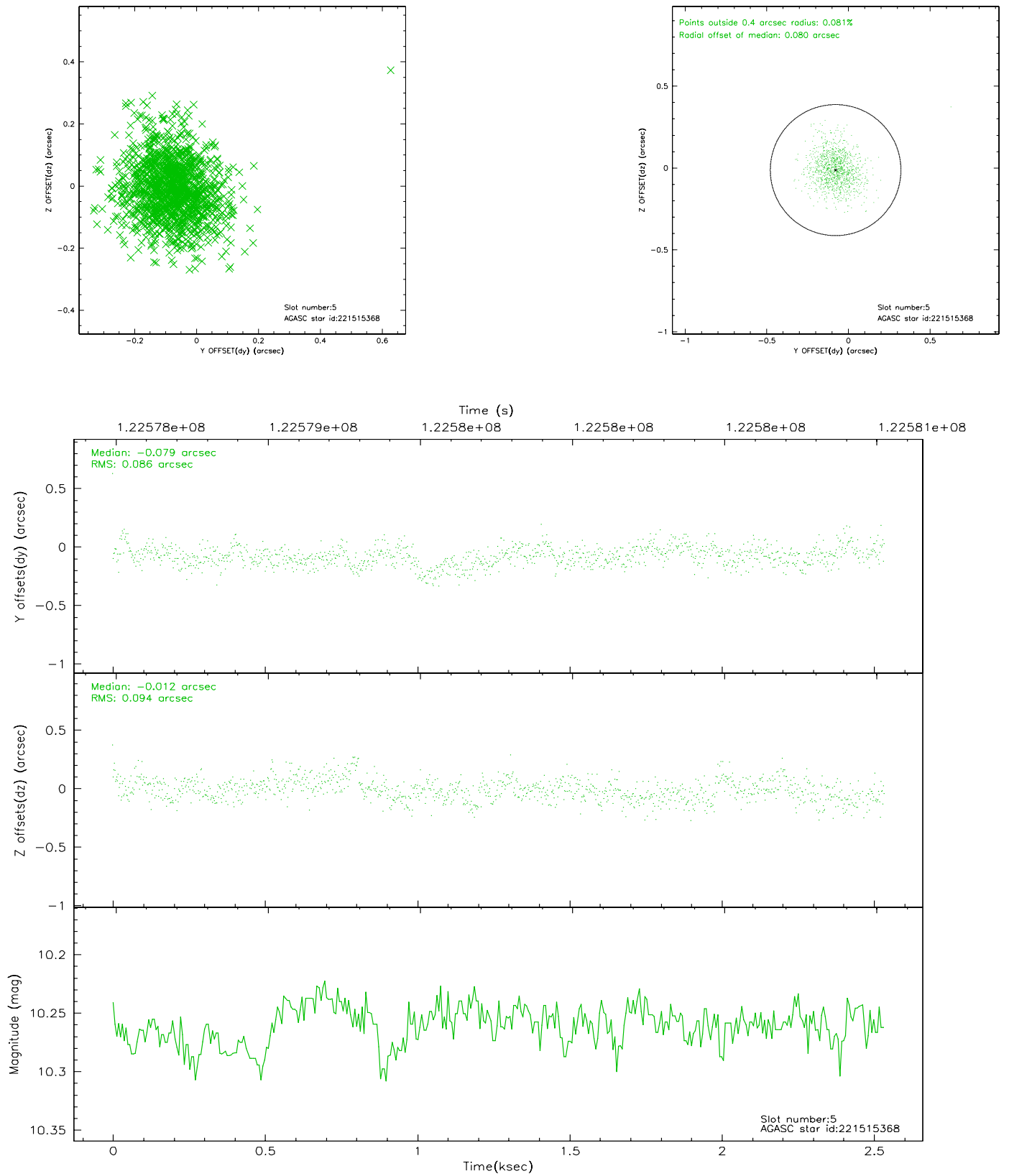
2.4.1 Slot 3



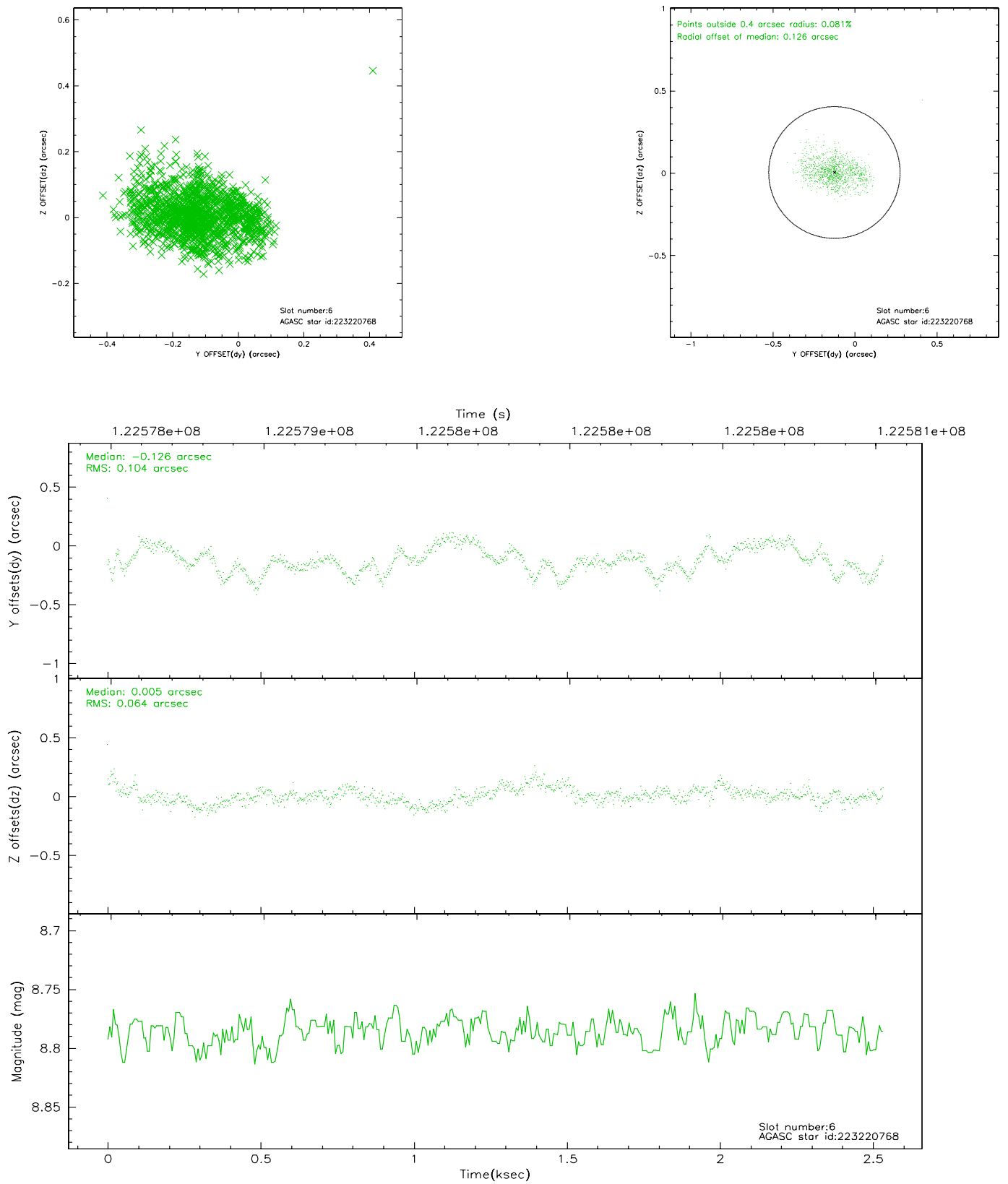
2.4.2 Slot 4



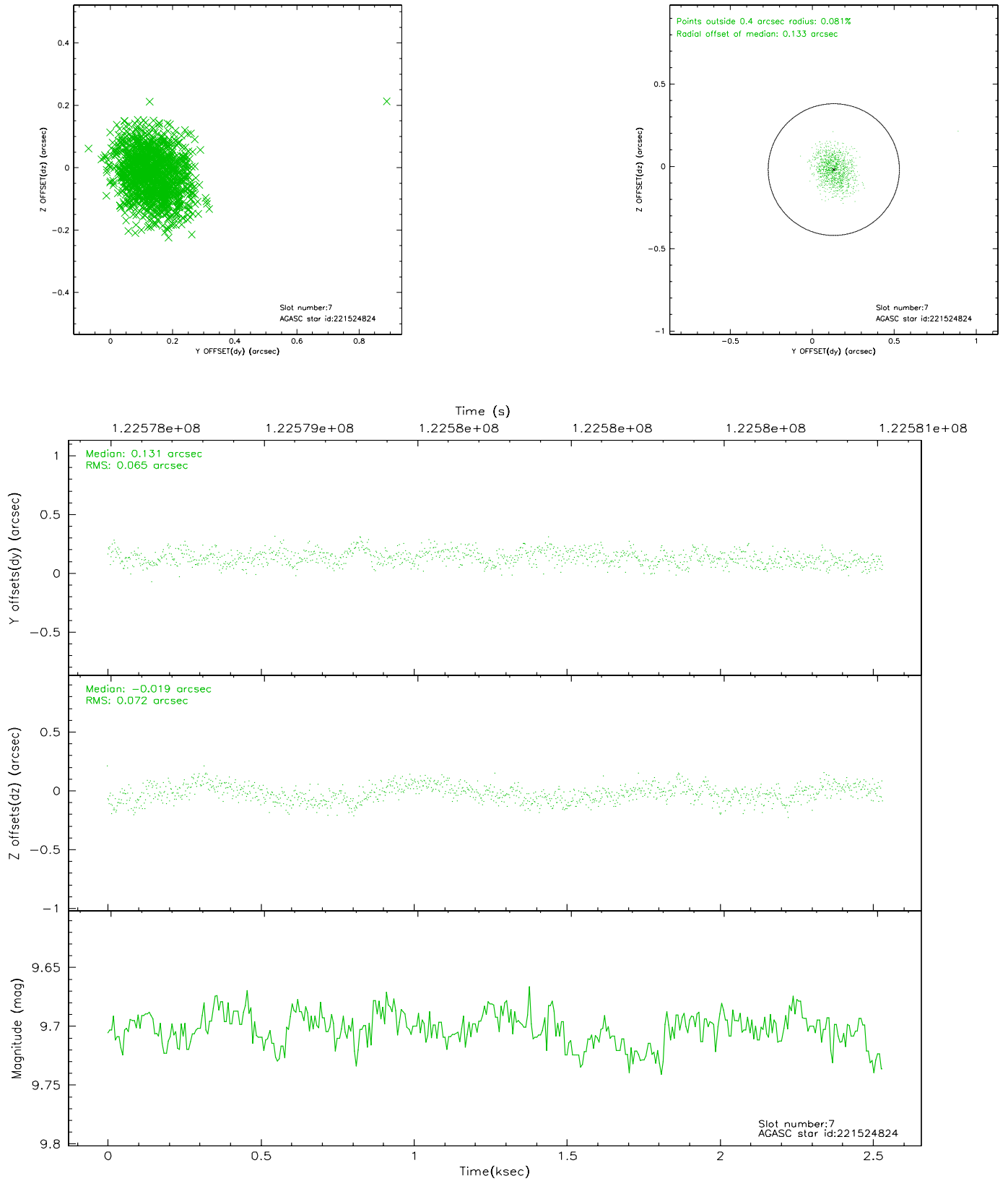
2.4.3 Slot 5



2.4.4 Slot 6

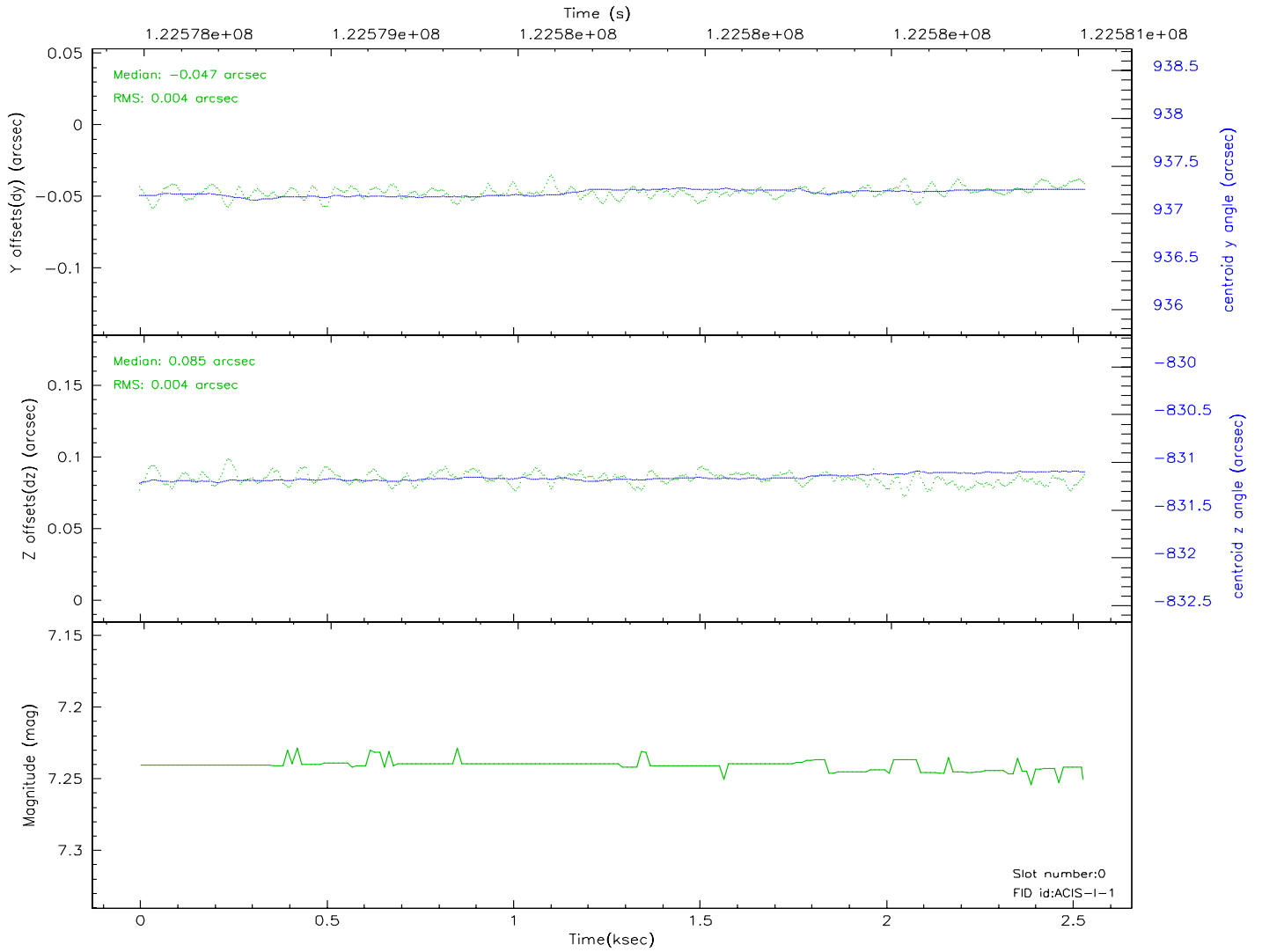
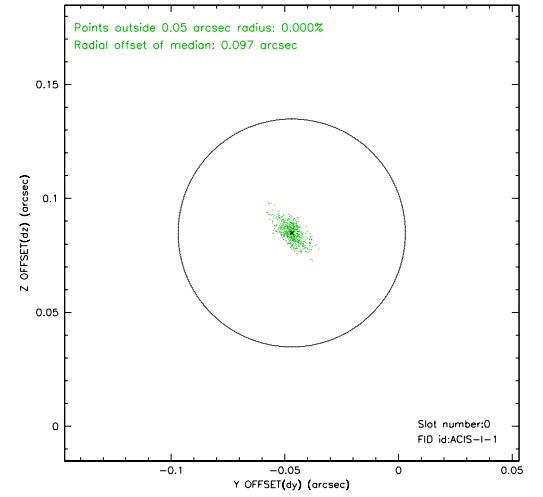
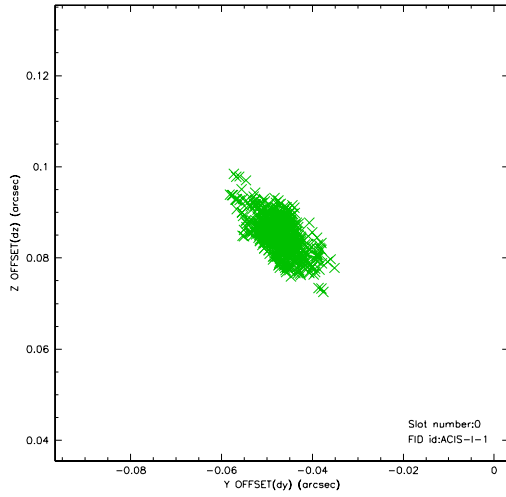


2.4.5 Slot 7

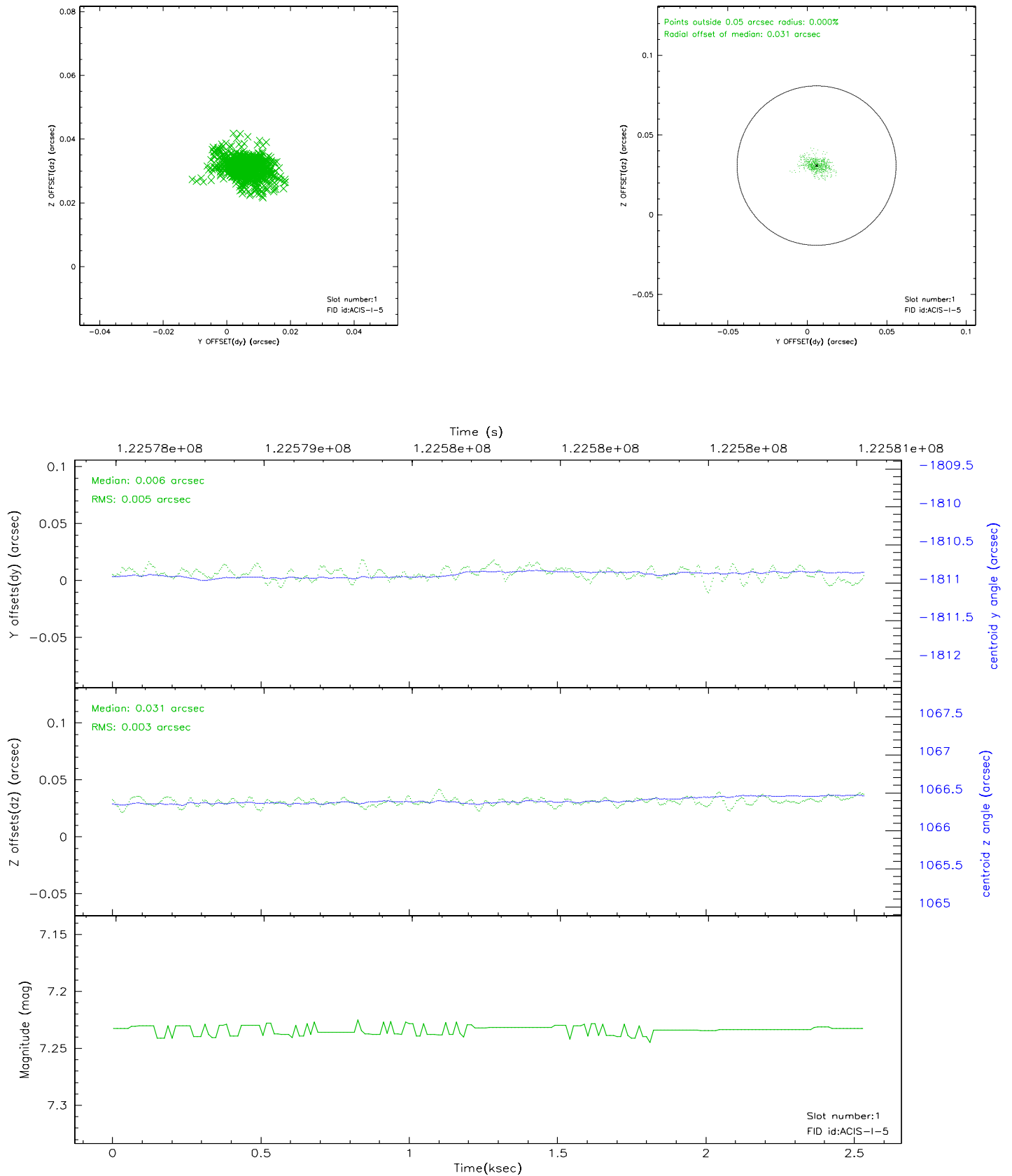


2.5 FID Slots

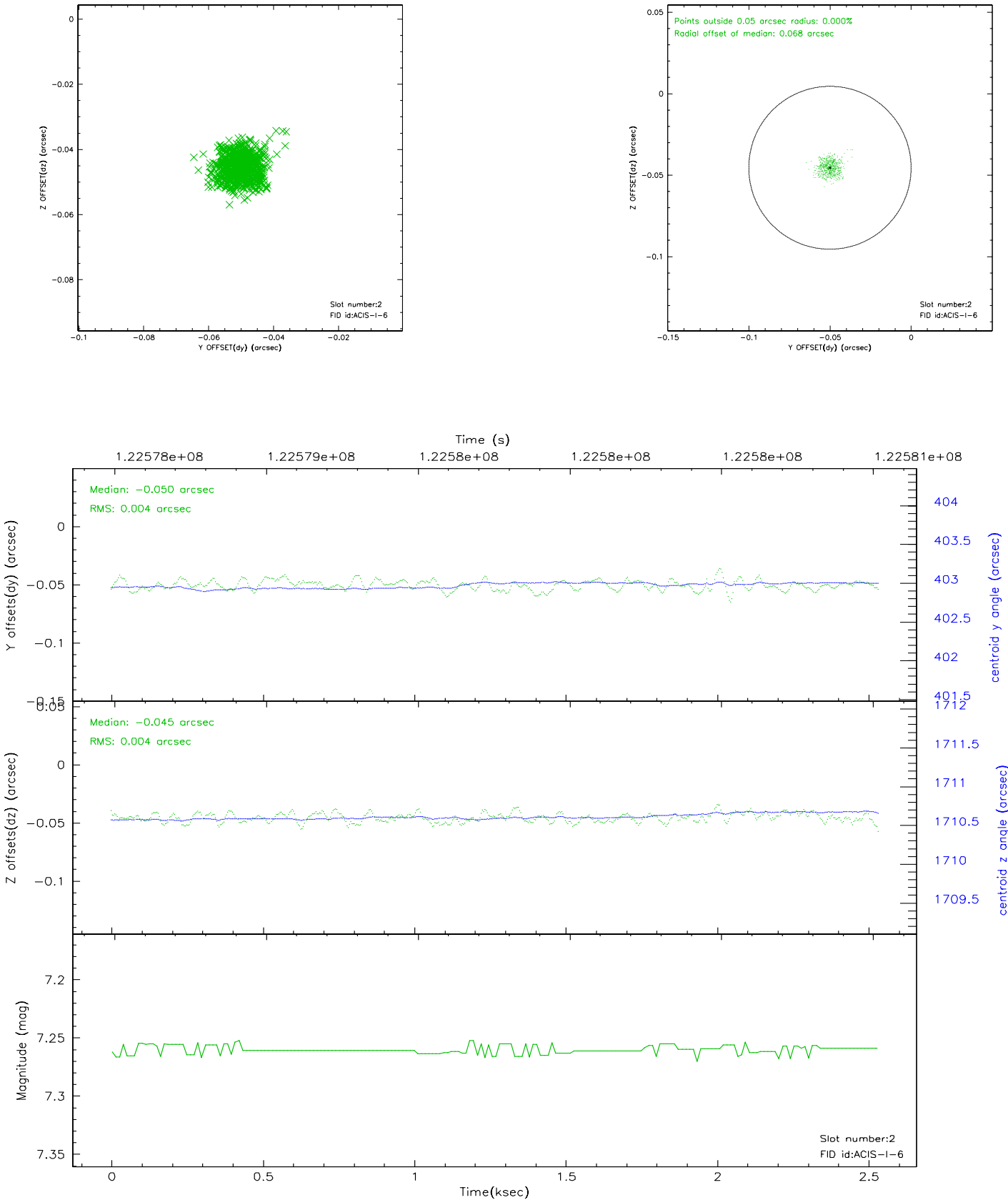
2.5.1 Slot 0



2.5.2 Slot 1



2.5.3 Slot 2



3 Point Sources

4.65 arcmin



A Summary

A.1 Status

V&V Scientist	Beth Sundheim
V&V Date (YYYY-MM-DD)	2007.01.12
V&V Edition	1
V&V Disposition and Status	OK
V&V Charge Time	2.534

A.2 Comments