

V&V Reference Report

L2 ASCDS Version : 7.6.9

Observation 2166 - L2 Version 001
Chandra X-Ray Center

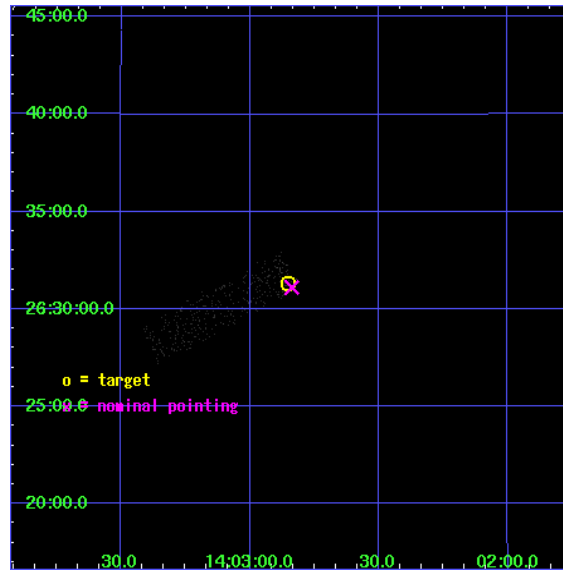
L2 Processing Date : Dec 11 2006

Contents

1	Front	2
2	OBI	3
2.1	OBI	3
2.1.1	Images	3
2.1.2	Bias	3
2.1.3	Parameters	4
2.1.4	Events	4
2.2	Compared Parameters	5
2.3	Aspect	6
2.4	Star Slots	9
2.4.1	Slot 3	9
2.4.2	Slot 4	10
2.4.3	Slot 5	11
2.4.4	Slot 6	12
2.4.5	Slot 7	13
2.5	FID Slots	14
2.5.1	Slot 0	14
2.5.2	Slot 1	15
2.5.3	Slot 2	16
3	Point Sources	17
A	Summary	18
A.1	Status	18
A.2	Comments	18

1 Front

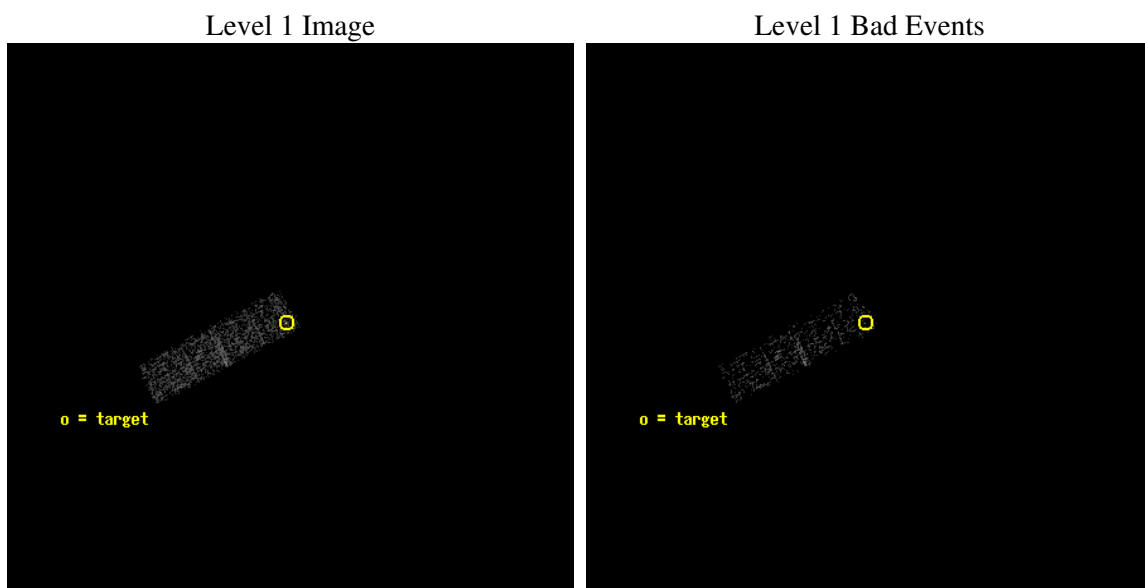
seq_num	700356
obs_id	2166
title	RED QUASARS AND THE X-RAY BACKGROUND
observer	Dr. BELINDA WILKES
object	2MASSJ140251+2631
dtcycle	0
cycle	P
ra_targ	210.713333
dec_targ	26.521528
ra_nom	210.70924869088
dec_nom	26.518556568875
roll_nom	242.48071963093
revision	2
ontime	1817.5999932289
livetime	1728.9070609996
ontime3	1817.5999932289
l2events	739



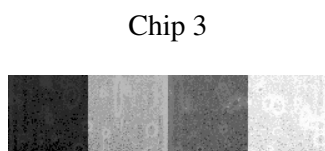
2 OBI

2.1 OBI

2.1.1 Images



2.1.2 Bias



2.1.3 Parameters

obi_num	0
ascdsver	7.6.9
caldsver	3.2.4
date	2006-12-11T16:28:53
revision	2

sched_exp_time	1000.000000
ontime	1819.1490911394
ontime3	1819.1490911394
l1events	4654

2.1.4 Events

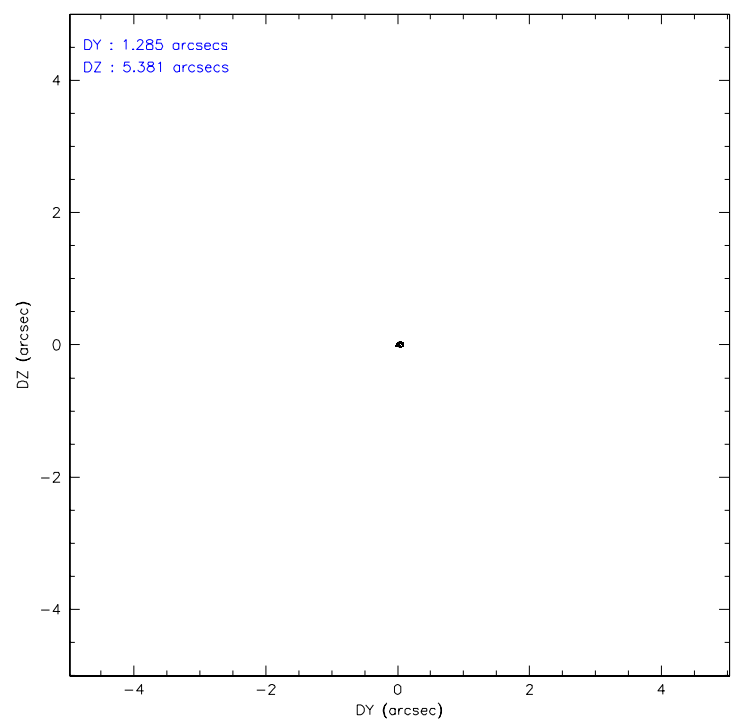
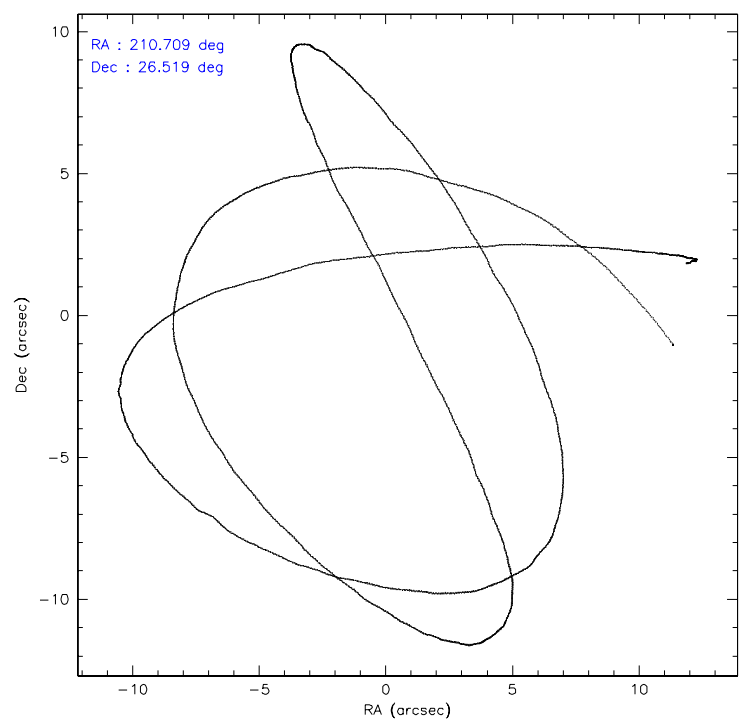
	ccd 3
level 1 events	4654
rejected events	3829
rejected %	82%

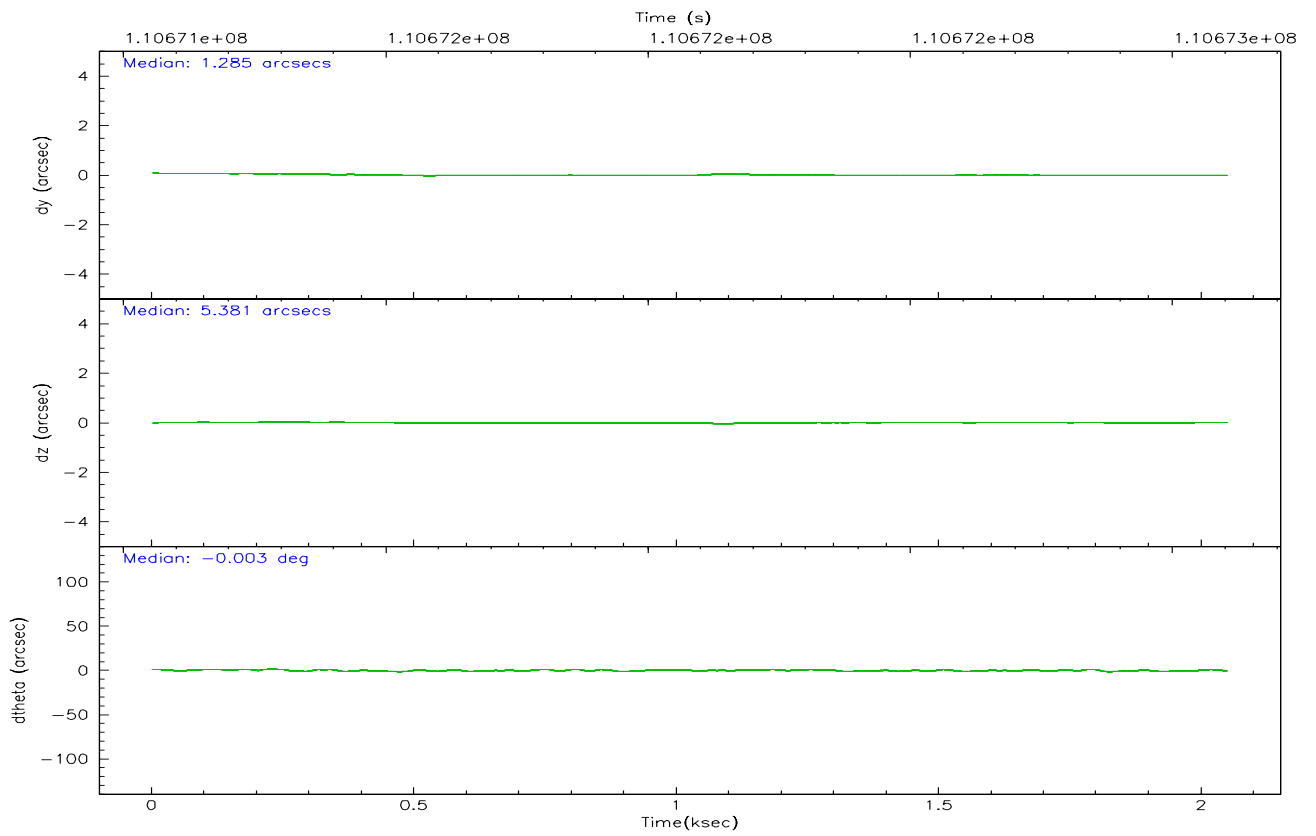
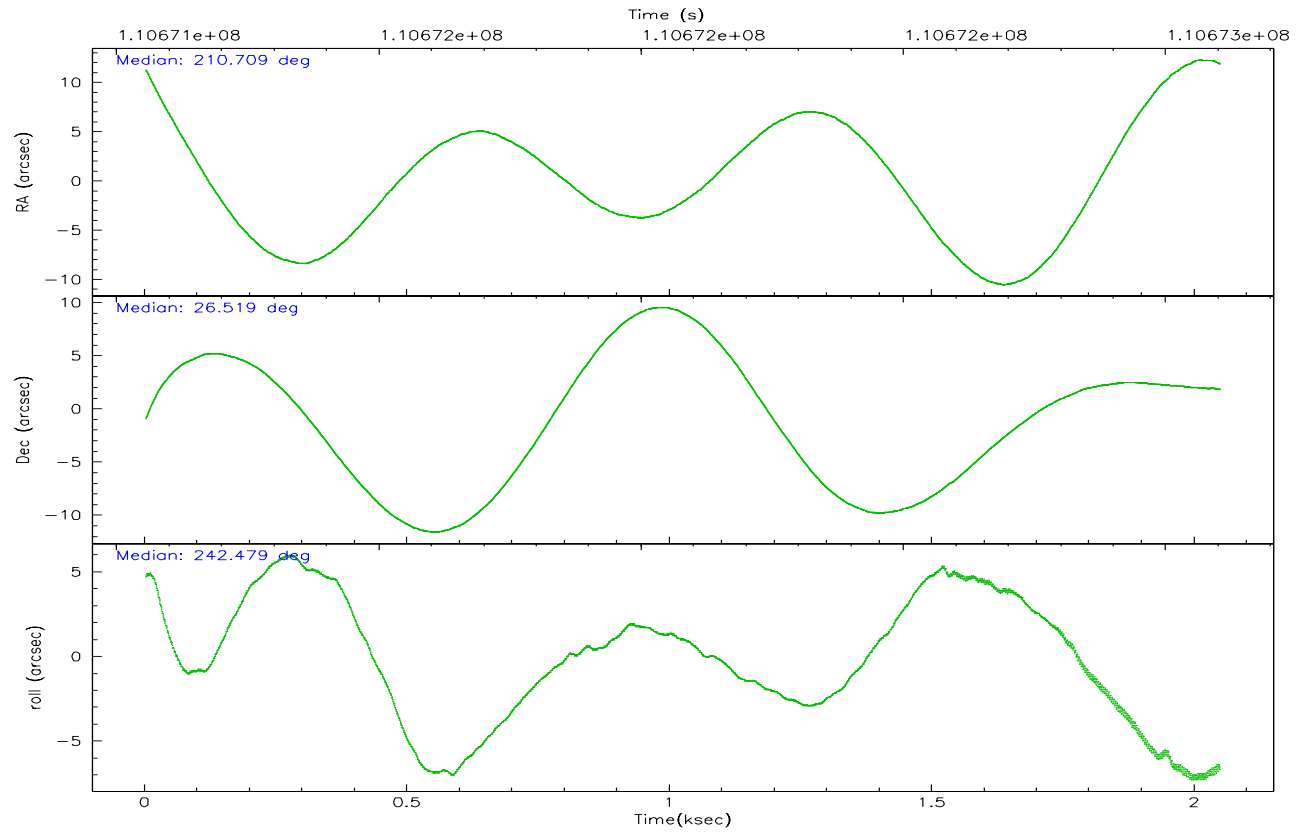
	ccd 3
grade 0 events	463
	9%
grade 1 events	7
	0%
grade 2 events	110
	2%
grade 3 events	91
	1%
grade 4 events	79
	1%
grade 5 events	137
	2%
grade 6 events	82
	1%
grade 7 events	3685
	79%

2.2 Compared Parameters

Parameter	Planned	Actual	Parameter	Planned	Actual
Instrument	ACIS	ACIS	Obspar format version number	6	6
Detector	ACIS-3	ACIS-3	Obspar file type	PREDICTED	ACTUAL
Grating	NONE	NONE	Obspar update status	NONE	UPDATED
Data mode	VFAINT	VFAINT	Number of optional ACIS chips dropped	0	0
Observation mode	POINTING	POINTING	On-chip summing requested	N	N
Pointing RA	210.707886	210.7092486908847	Subarray requested	1/4	1/4
Pointing Dec	26.545936	26.5185565688751	Subarray start row	0	769
Pointing Roll	242.272586	242.4807196309264	Subarray row count	1024	256
SIM focus pos (mm)	-0.782348	-0.7809083437167272	Alternating exposures requested	N	N
SIM defocus (mm)	0	0.001439871863259334	Primary exposure time	0.000000	0.8
SIM translation stage pos (mm)	-233.592463	-233.5874344608287			
SIM translation stage offset (mm)	0	-0.005018542100998502			
Observation start time	110672106.184000	110670712.98237			
Observation start date	2001-07-04T22:14:02	2001-07-04T21:51:52			
Observation end time	110673106.184000	110673761.84499			
Observation end date	2001-07-04T22:30:42	2001-07-04T22:42:41			
Read mode	TIMED	TIMED			

2.3 Aspect



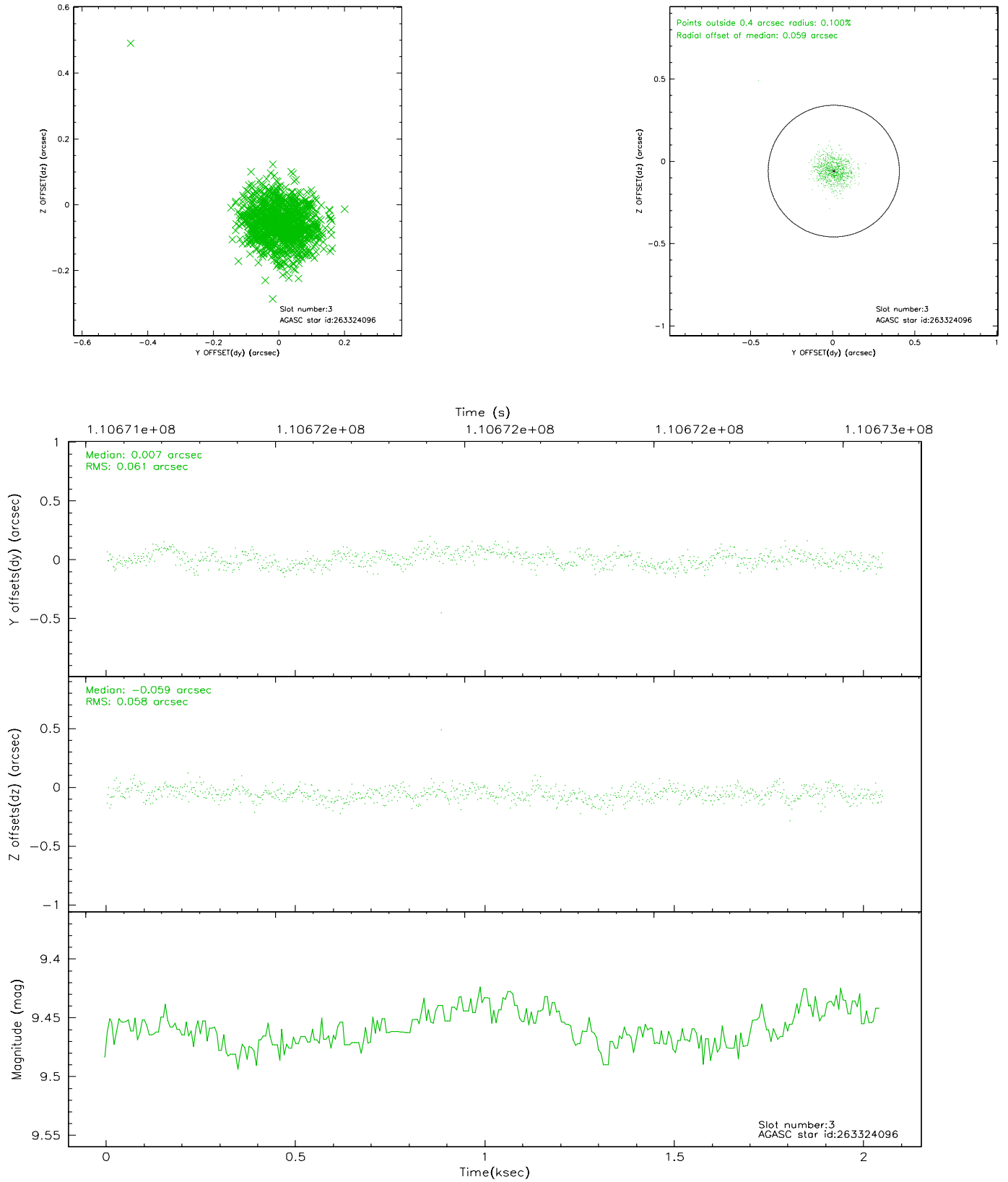


Slot Statistics

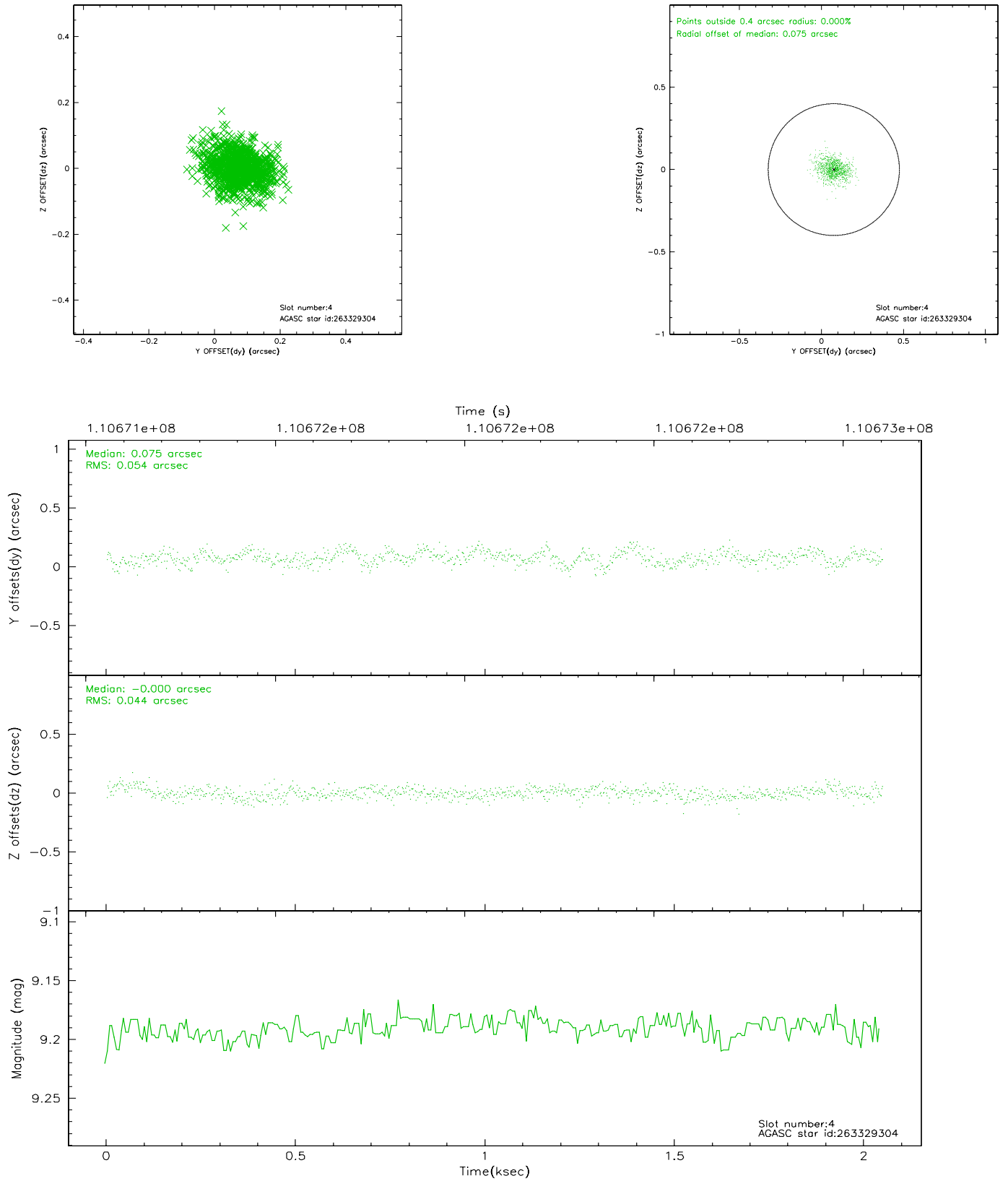
slot	status	id	mag	n_pts	med_dy	med_dz	dr1	dr2	ra	dec	mean_y	mean_z
0	FID	ACIS-I-2	7.15	497	-0.013	-0.024	0.008	0.017	0.000000	0.000000	-755.63	-835.13
1	FID	ACIS-I-4	7.19	499	-0.077	0.024	0.004	0.008	0.000000	0.000000	2156.90	1069.52
2	FID	ACIS-I-5	7.23	500	-0.011	0.069	0.008	0.015	0.000000	0.000000	-1805.36	1071.02
3	GUIDE	263324096	9.46	1000	0.007	-0.059	0.088	0.136	210.641256	26.815275	-759.01	-639.99
4	GUIDE	263329304	9.19	998	0.075	-0.000	0.073	0.122	210.804717	26.040607	1463.52	1123.73
5	GUIDE	263327816	9.17	999	-0.089	0.038	0.121	0.187	211.449707	26.888371	-2204.53	1533.45
6	GUIDE	263324512	10.20	999	0.052	0.042	0.179	0.311	211.113892	26.601672	-789.98	1064.78
7	GUIDE	263323696	10.12	999	-0.047	-0.032	0.143	0.243	211.076254	26.914243	-1726.47	430.79

2.4 Star Slots

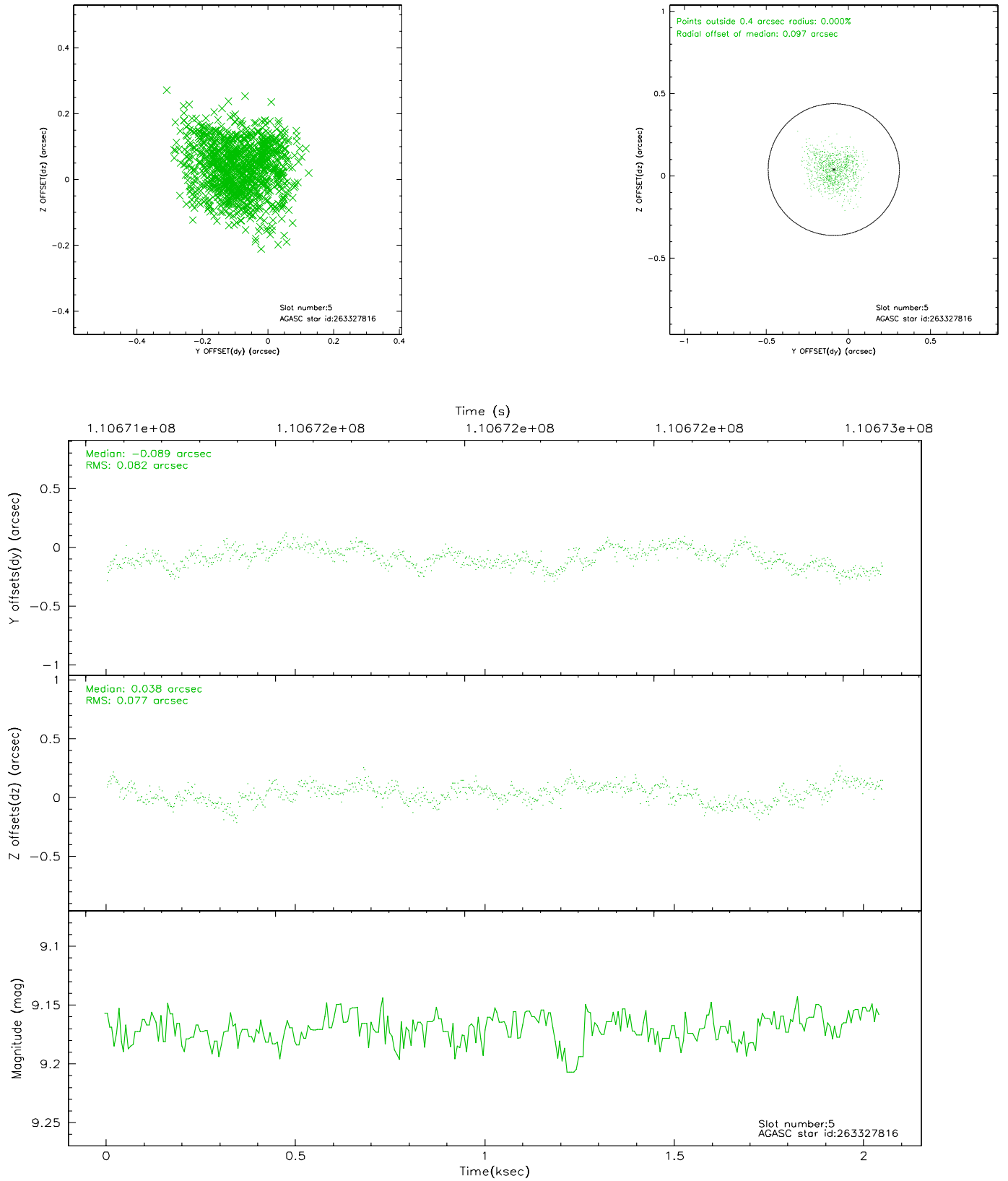
2.4.1 Slot 3



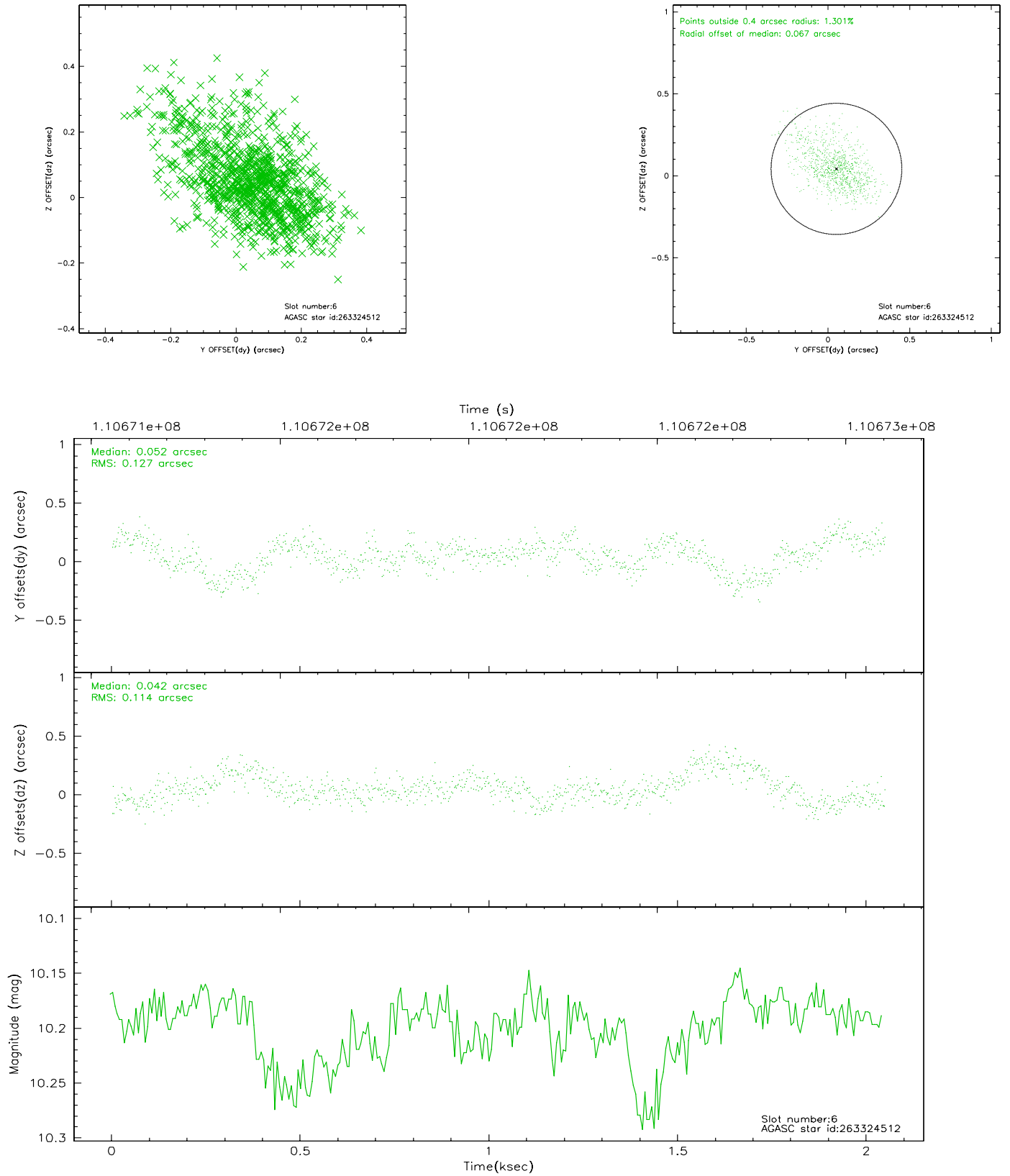
2.4.2 Slot 4



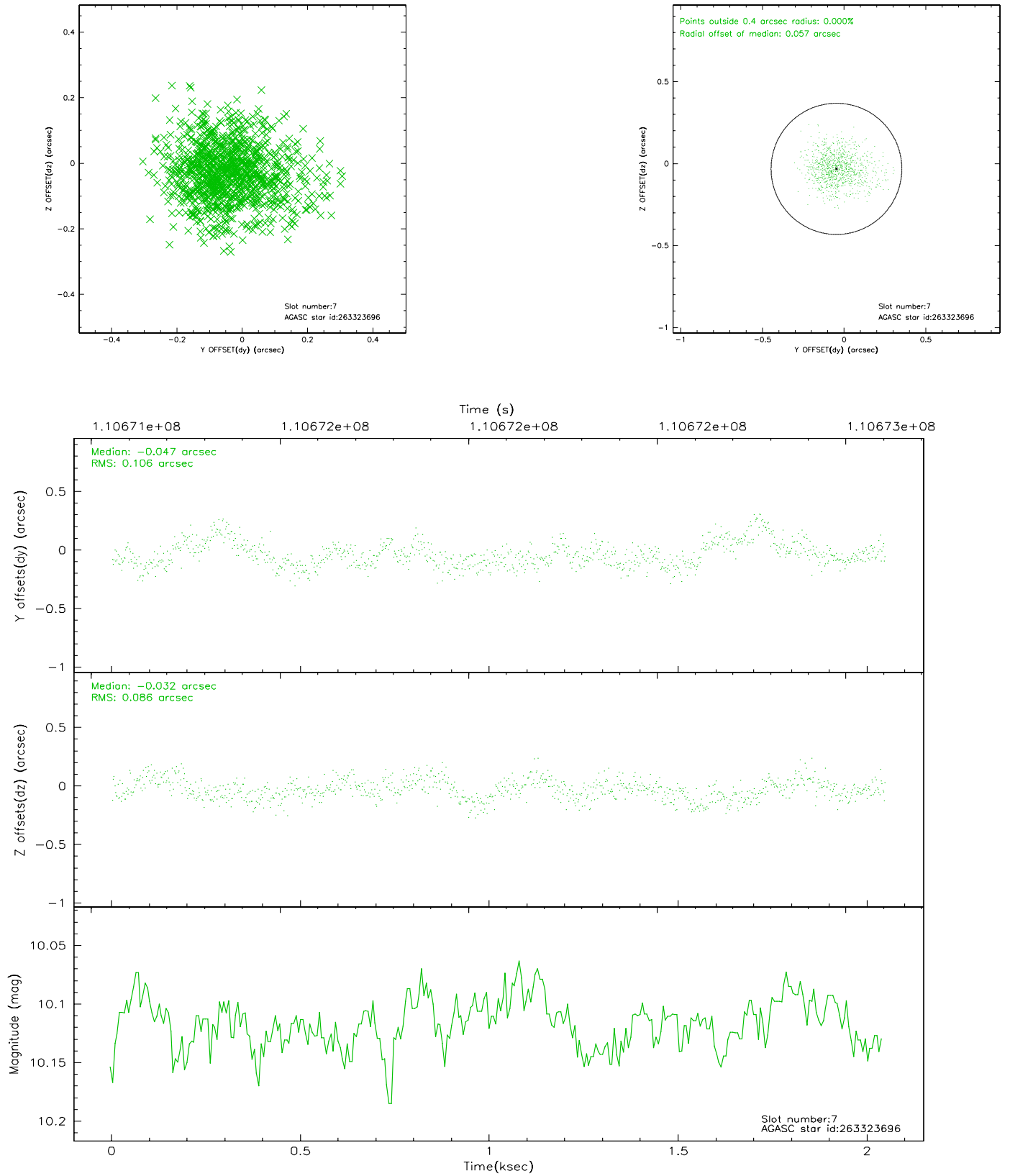
2.4.3 Slot 5



2.4.4 Slot 6

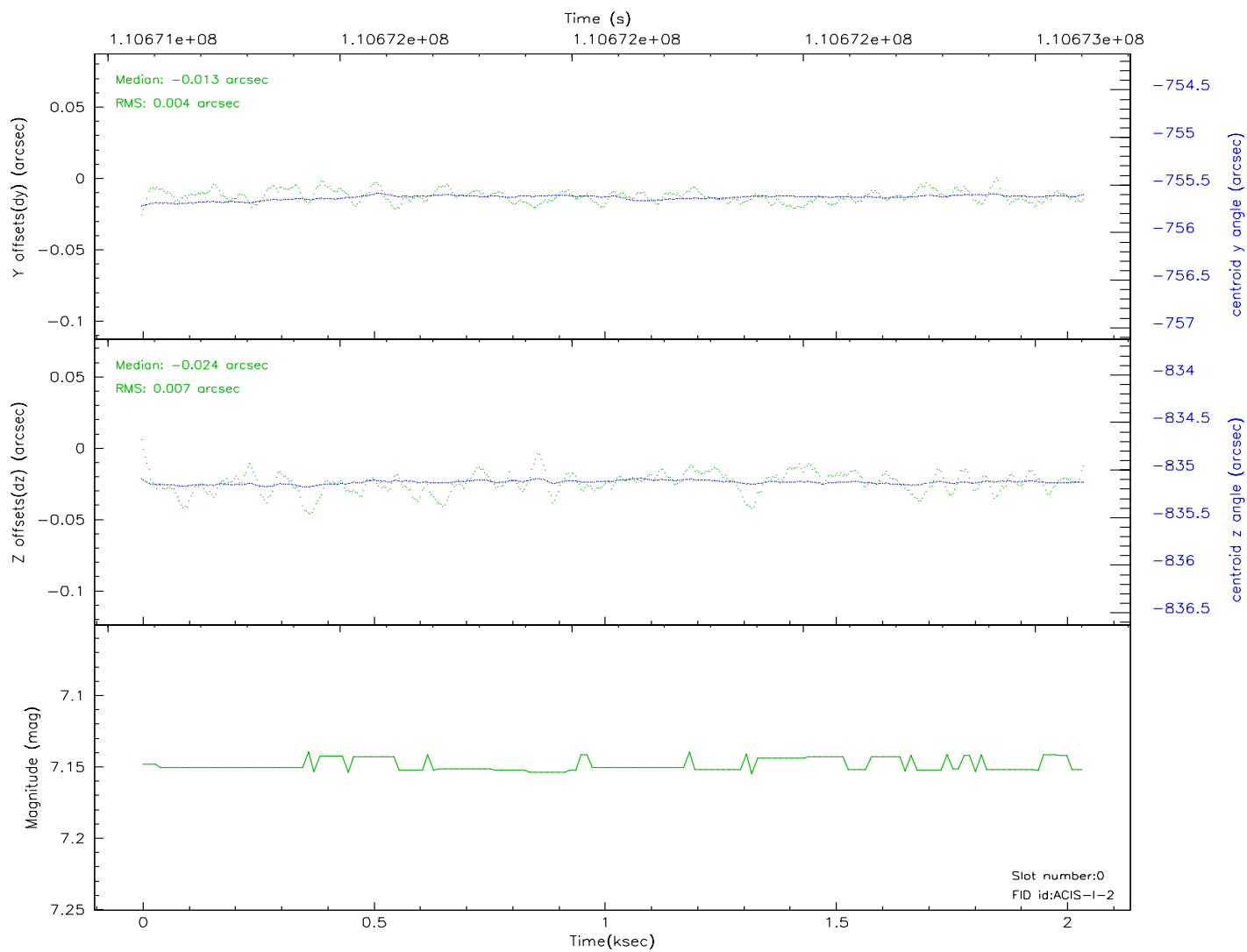
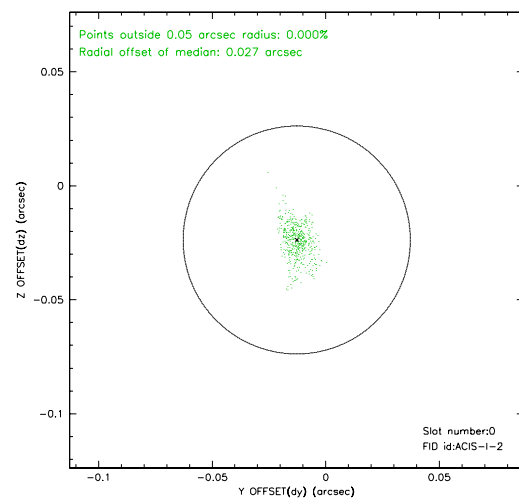
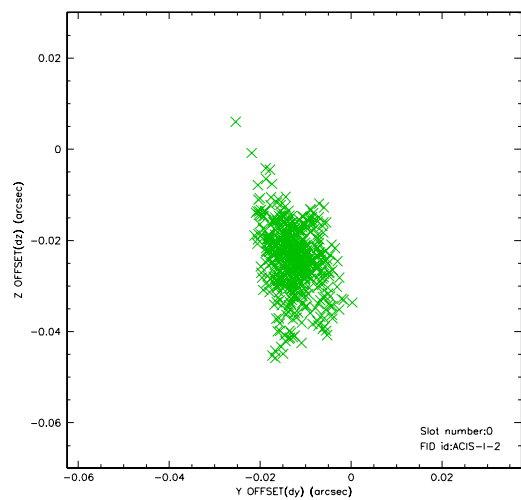


2.4.5 Slot 7

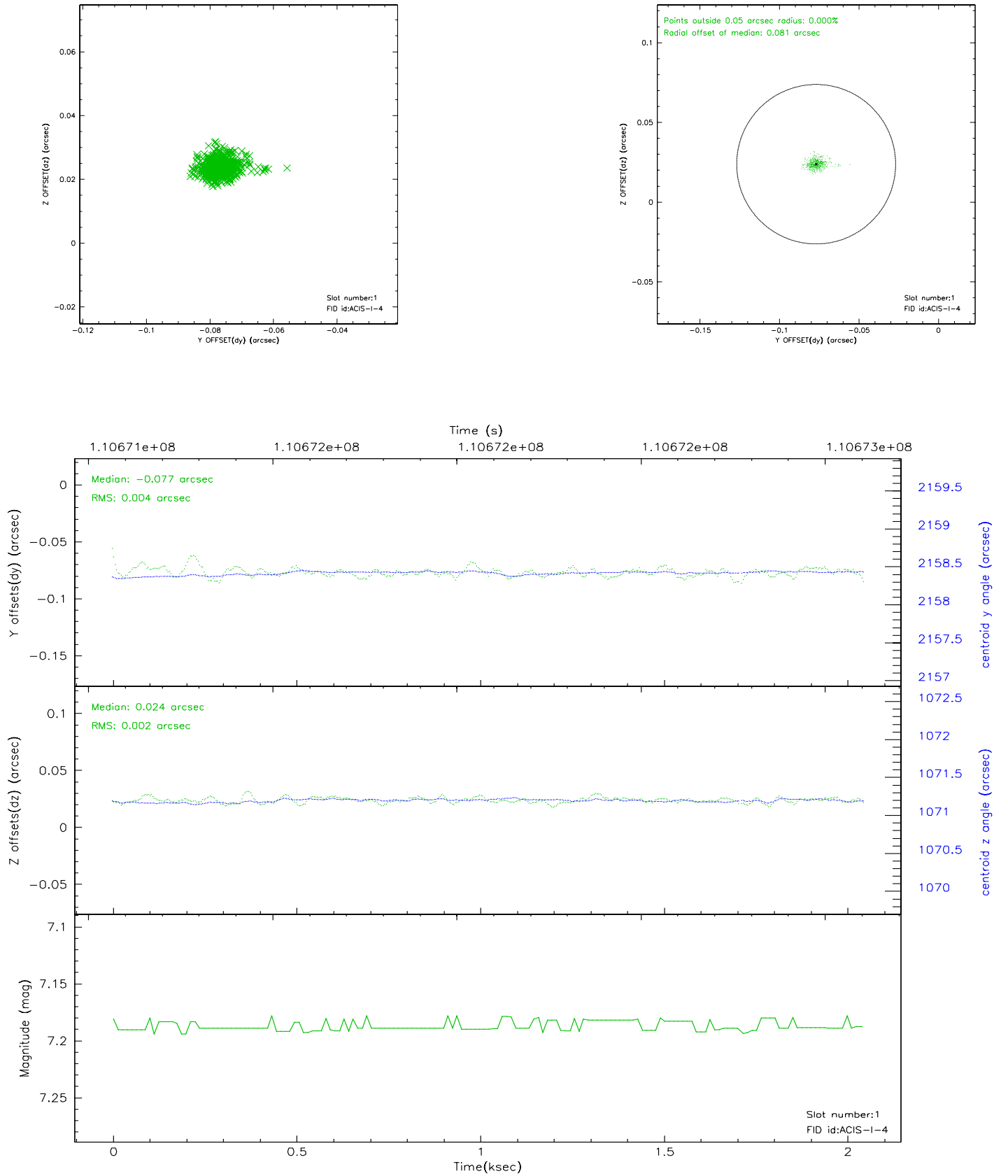


2.5 FID Slots

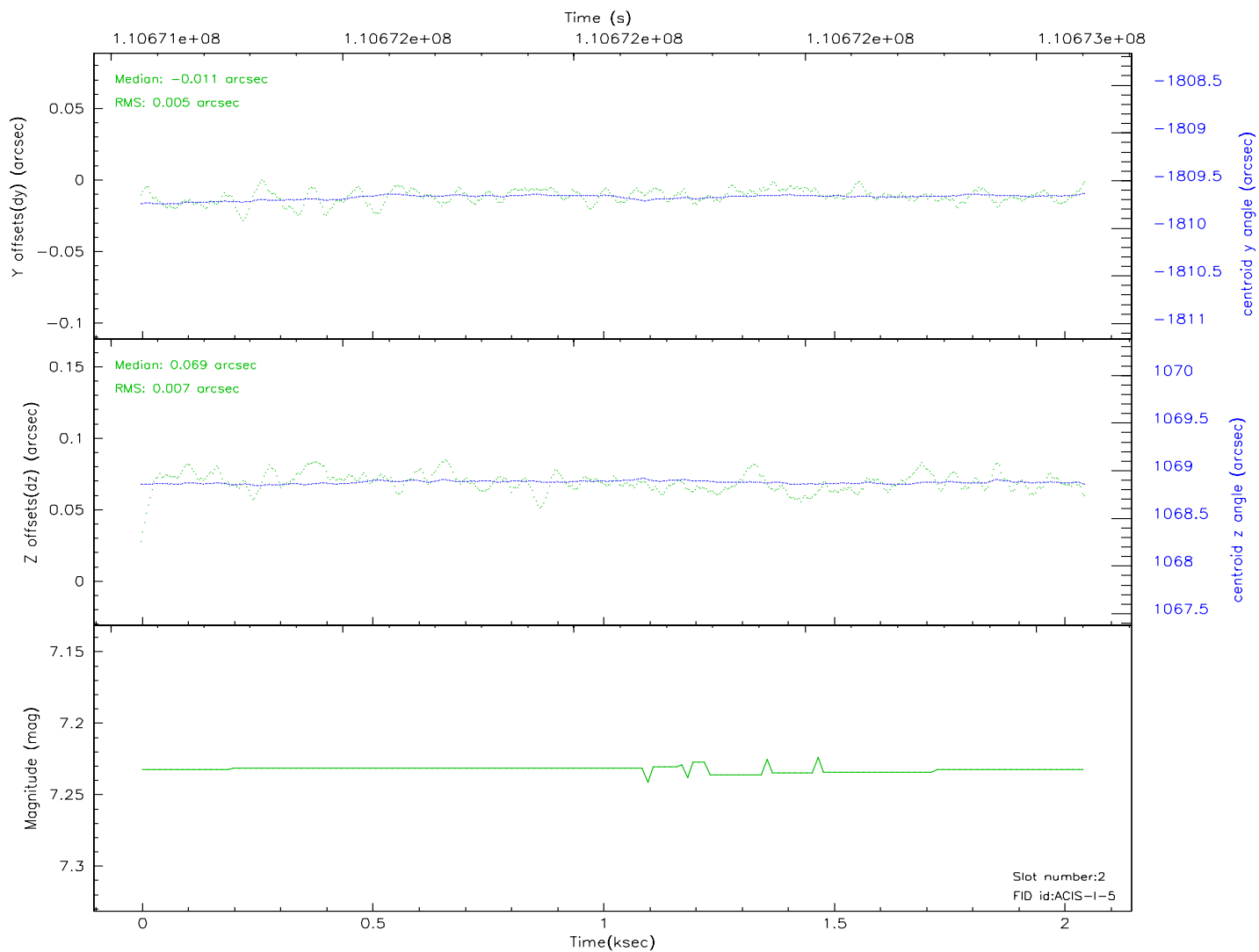
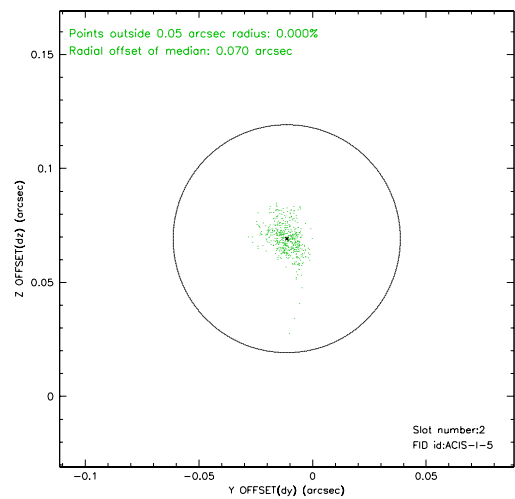
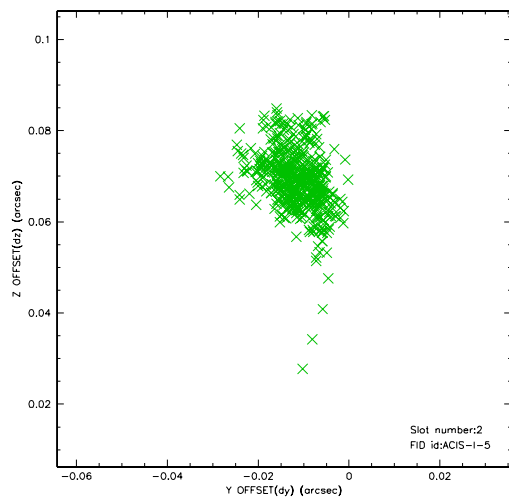
2.5.1 Slot 0



2.5.2 Slot 1



2.5.3 Slot 2



3 Point Sources

A Summary

A.1 Status

V&V Scientist	Beth Sundheim
V&V Date (YYYY-MM-DD)	2006.12.11
V&V Edition	1
V&V Disposition and Status	OK
V&V Charge Time	1.8

A.2 Comments