

V&V Reference Report

L2 ASCDS Version : 7.6.9

Observation 2128 - L2 Version 001
Chandra X-Ray Center

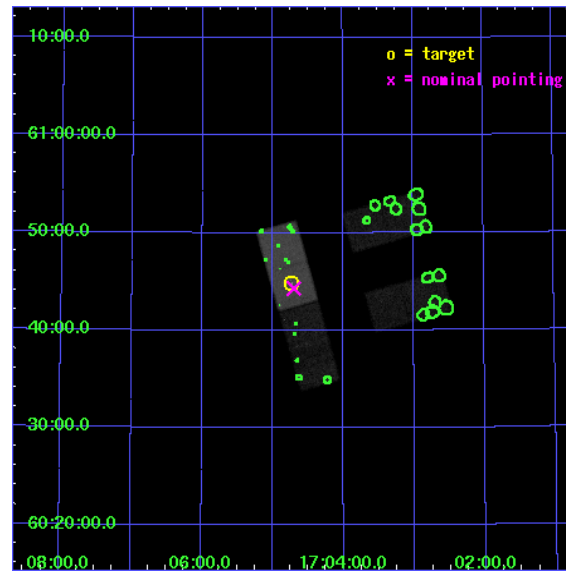
L2 Processing Date : Dec 21 2006

Contents

1	Front	2
2	OBI	3
2.1	OBI	3
2.1.1	Images	3
2.1.2	Bias	3
2.1.3	Parameters	4
2.1.4	Events	4
2.2	Compared Parameters	5
2.3	Aspect	6
2.4	Star Slots	9
2.4.1	Slot 3	9
2.4.2	Slot 4	10
2.4.3	Slot 5	11
2.4.4	Slot 6	12
2.4.5	Slot 7	13
2.5	FID Slots	14
2.5.1	Slot 0	14
2.5.2	Slot 1	15
2.5.3	Slot 2	16
3	Point Sources	17
A	Summary	18
A.1	Status	18
A.2	Comments	18

1 Front

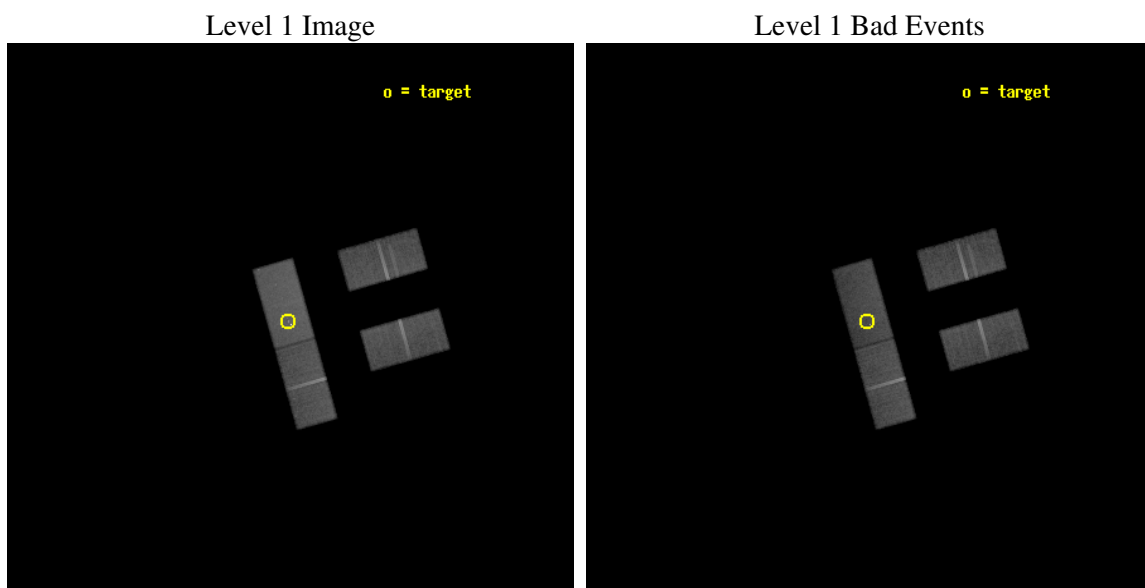
seq_num	700318
obs_id	2128
title	MAGNETIC FIELD STRENGTH IN THE HOTSPOTS OF RADIO GALAXIES & QUASARS: SYNCHROTRON SELF-COMPTON EMISSION & EQUIPARTITION
observer	DR MARTIN HARDCASTLE
object	3C351
dtcycle	0
cycle	P
ra_targ	256.18375
dec_targ	60.747361
ra_nom	256.17499447707
dec_nom	60.738614705689
roll_nom	254.15254422916
revision	3
ontime	52147.75
livetime	50918.517093232
ontime2	52147.75
ontime3	52147.75
ontime6	52147.75
ontime7	52147.75
l2events	173153



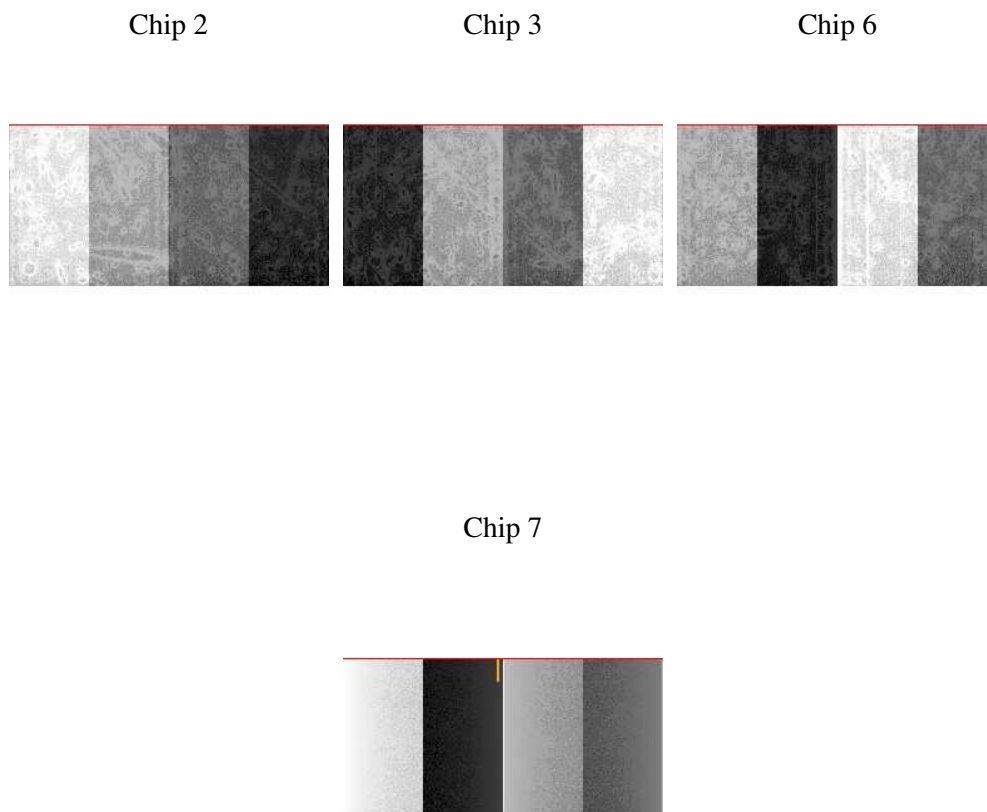
2 OBI

2.1 OBI

2.1.1 Images



2.1.2 Bias



2.1.3 Parameters

obi_num	0
ascdsver	7.6.9
caldbver	3.2.4
date	2006-12-21T20:17:40
revision	3

sched_exp_time	51639.061000
ontime	52183.509610191
ontime2	52183.509610191
ontime3	52183.509610191
ontime6	52183.509610191
ontime7	52183.509610191
l1events	826220

2.1.4 Events

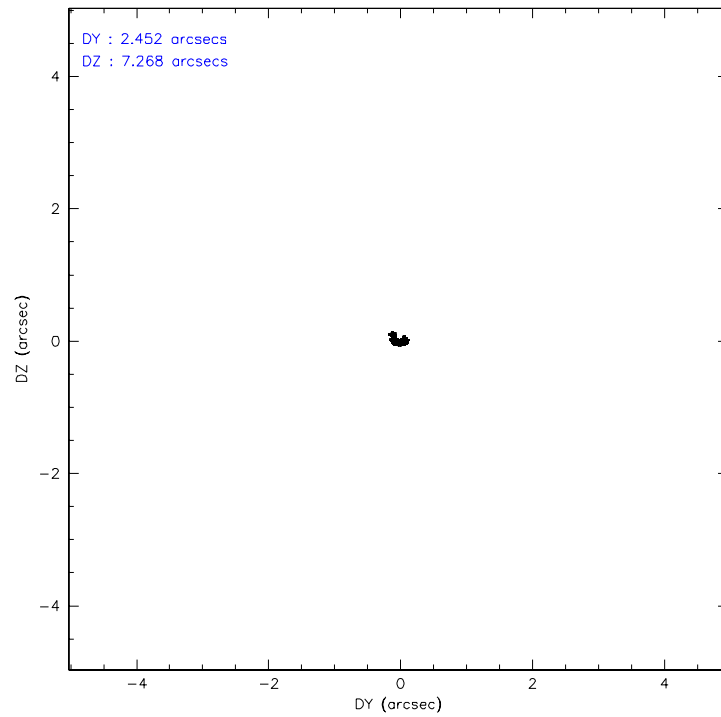
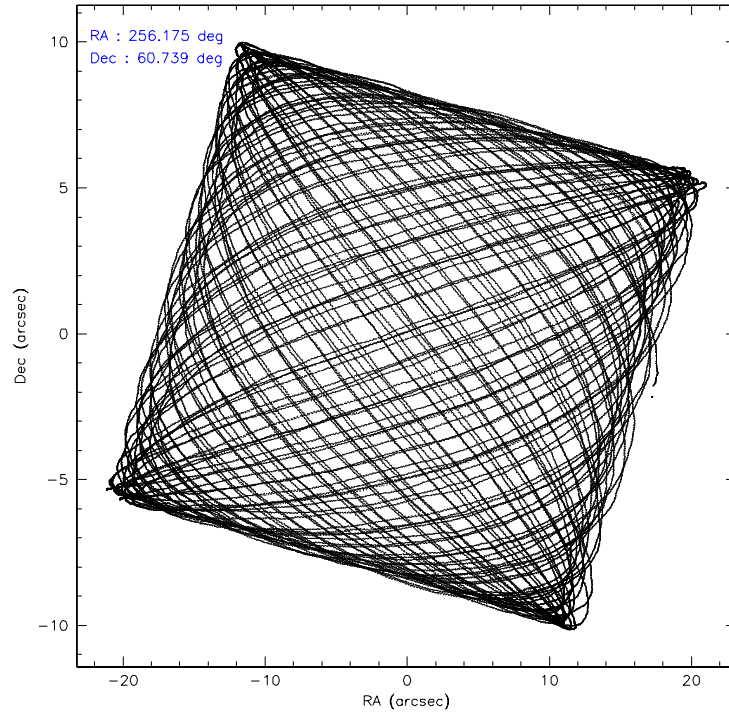
	ccd 2	ccd 3	ccd 6	ccd 7
level 1 events	187588	188615	196292	253725
rejected events	164999	166985	172719	135588
rejected %	87%	88%	87%	53%

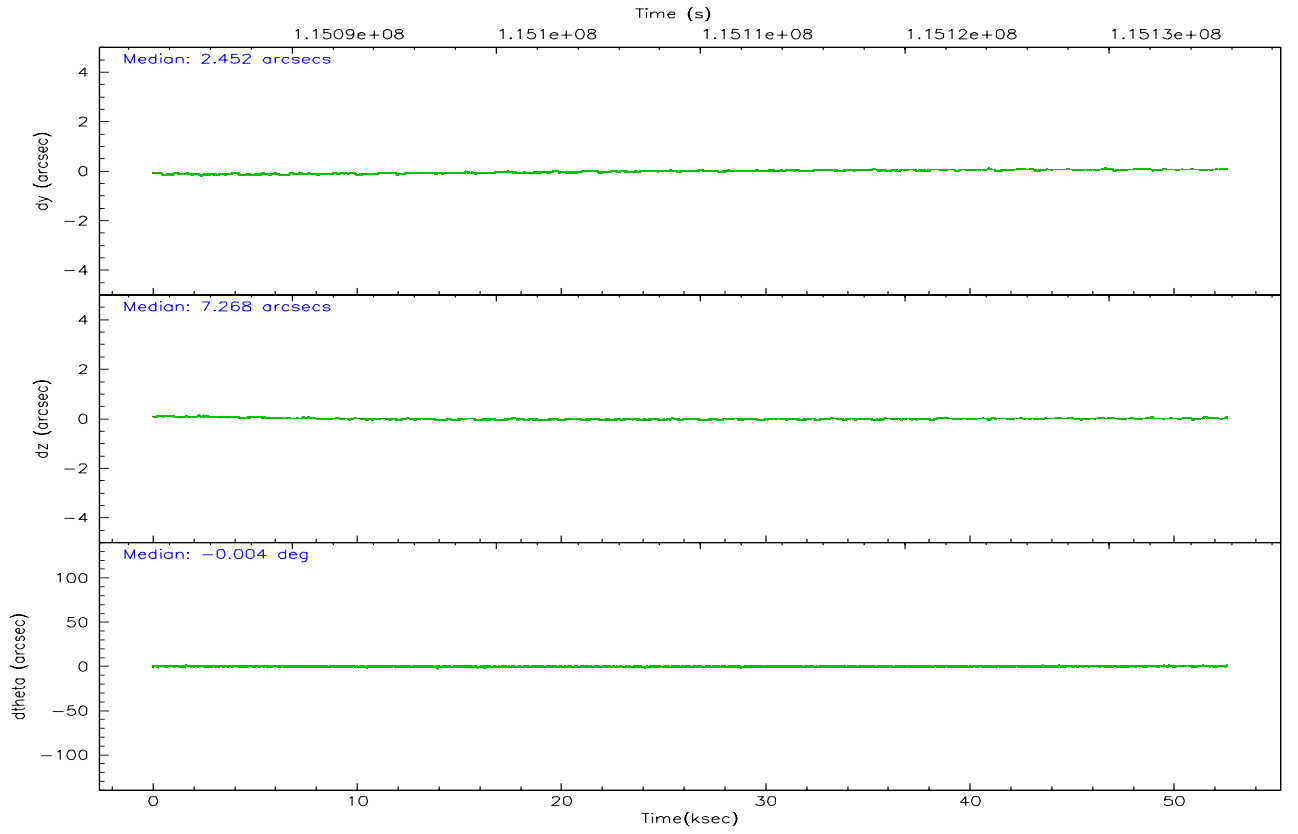
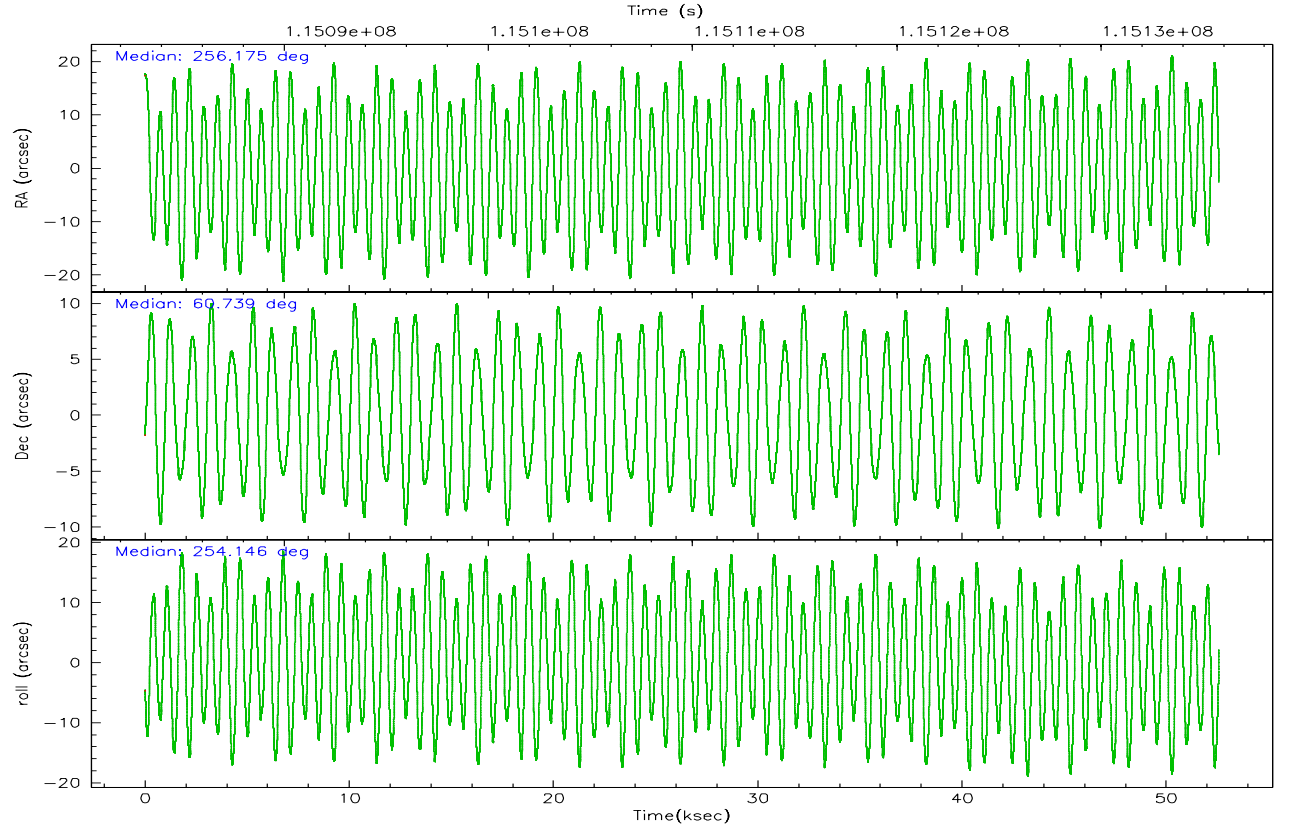
	ccd 2	ccd 3	ccd 6	ccd 7
grade 0 events	9494	8937	9826	11458
	5%	4%	5%	4%
grade 1 events	53	60	65	187
	0%	0%	0%	0%
grade 2 events	4541	4084	4319	28724
	2%	2%	2%	11%
grade 3 events	2505	2449	2692	8064
	1%	1%	1%	3%
grade 4 events	2453	2383	2541	7885
	1%	1%	1%	3%
grade 5 events	5721	6773	7516	15946
	3%	3%	3%	6%
grade 6 events	3610	3789	4207	62090
	1%	2%	2%	24%
grade 7 events	159211	160140	165126	119371
	84%	84%	84%	47%

2.2 Compared Parameters

Parameter	Planned	Actual	Parameter	Planned	Actual
Instrument	ACIS	ACIS	Obspar format version number	6	6
Detector	ACIS-2367	ACIS-2367	Obspar file type	PREDICTED	ACTUAL
Grating	NONE	NONE	Obspar update status	OVERRIDE	OVERRIDE
Data mode	FAINT	FAINT	On-chip summing requested	N	N
Observation mode	POINTING	POINTING	Subarray requested	CUSTOM	CUSTOM
Pointing RA	256.18375	256.1749944770696	Subarray start row	256	256
Pointing Dec	60.747361	60.73861470568925	Subarray row count	512	512
Pointing Roll	254.008366	254.1525442291611	Alternating exposures requested	N	N
SIM focus pos (mm)	-0.68282252473119	-0.68282252473119	Primary exposure time	0.000000	0.000000
SIM defocus (mm)	0.001444942264670734	0.001444942264670734			
SIM translation stage pos (mm)	-190.1425803652	-190.1425803652			
SIM translation stage offset (mm)	0.01005726123278805	0.01005726123278805			
Observation start time	115083084.9804035	115083084.9804035			
Observation start date	2001-08-24T23:31:25	2001-08-24T23:31:24			
Observation end time	115135788.689	115135788.689			
Observation end date	2001-08-25T14:09:49	2001-08-25T14:09:48			
Read mode	TIMED	TIMED			

2.3 Aspect



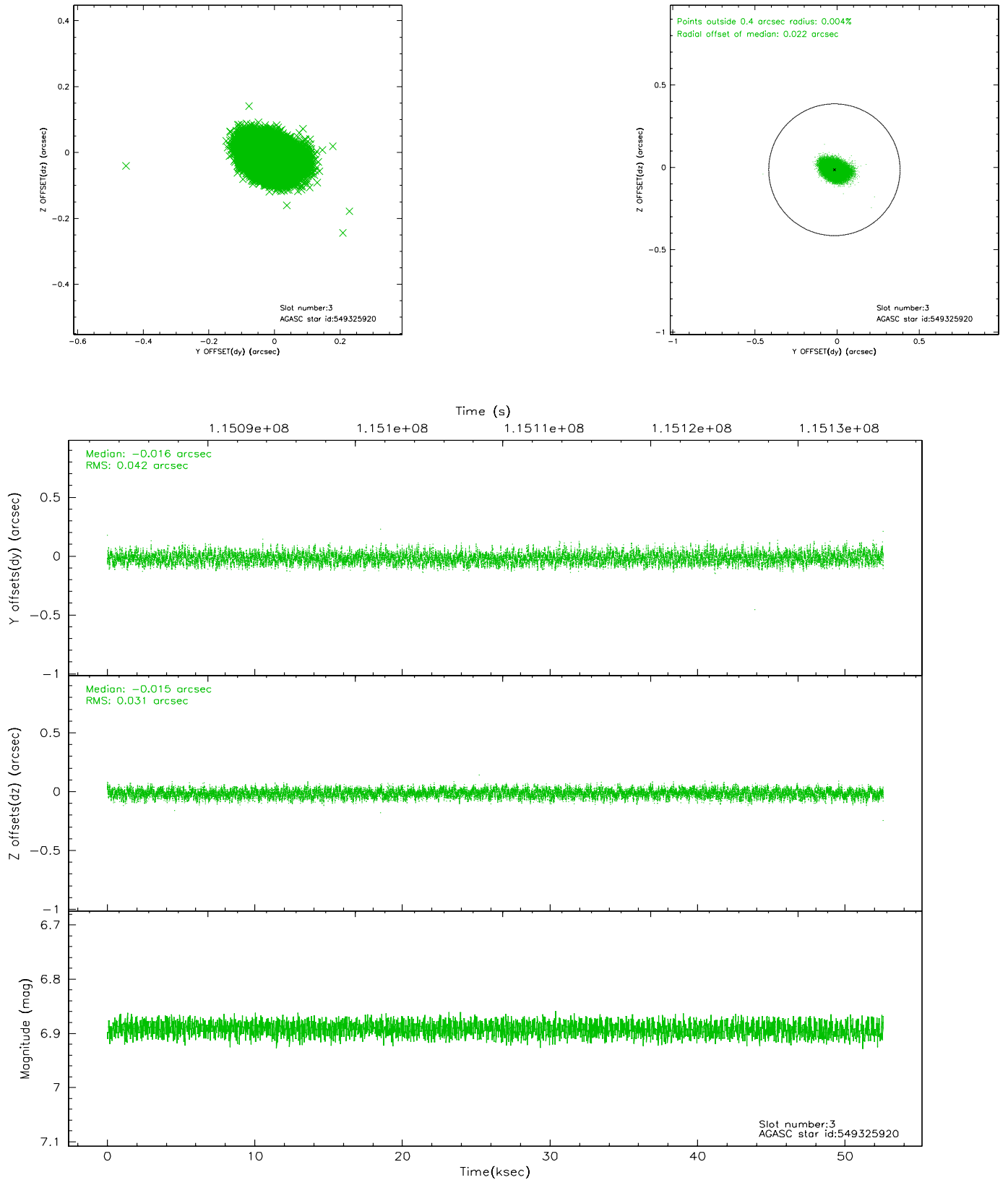


Slot Statistics

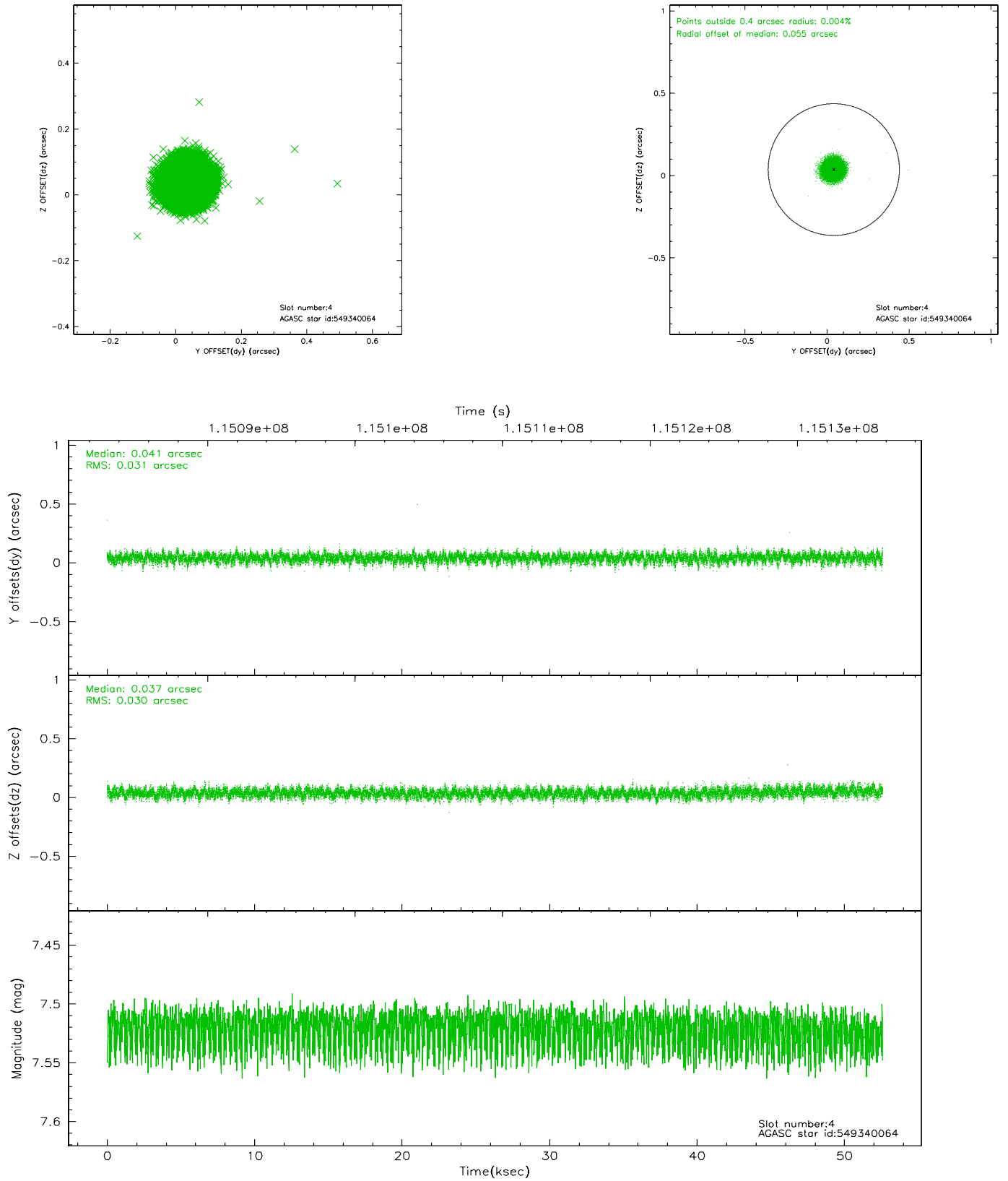
slot	status	id	mag	n_pts	med_dy	med_dz	dr1	dr2	ra	dec	mean_y	mean_z
0	FID	ACIS-S-2	7.11	12827	-0.003	0.020	0.009	0.018	0.000000	0.000000	-755.06	-1728.37
1	FID	ACIS-S-4	7.19	12828	-0.089	-0.004	0.007	0.027	0.000000	0.000000	2158.13	180.11
2	FID	ACIS-S-5	7.24	12829	0.062	-0.008	0.008	0.017	0.000000	0.000000	-1807.88	173.75
3	GUIDE	549325920	6.89	25657	-0.016	-0.015	0.056	0.090	257.031396	61.159618	-1792.22	1059.21
4	GUIDE	549340064	7.52	25656	0.041	0.037	0.046	0.074	255.160960	61.023929	-428.48	-1936.30
5	GUIDE	549339744	7.71	25657	-0.026	-0.024	0.043	0.070	256.589881	60.636084	234.76	855.56
6	GUIDE	549327792	7.76	25652	0.007	0.070	0.053	0.087	256.039638	61.184138	-1392.92	-617.58
7	GUIDE	549340384	7.85	25653	-0.005	-0.065	0.046	0.075	256.352914	60.584495	530.31	505.71

2.4 Star Slots

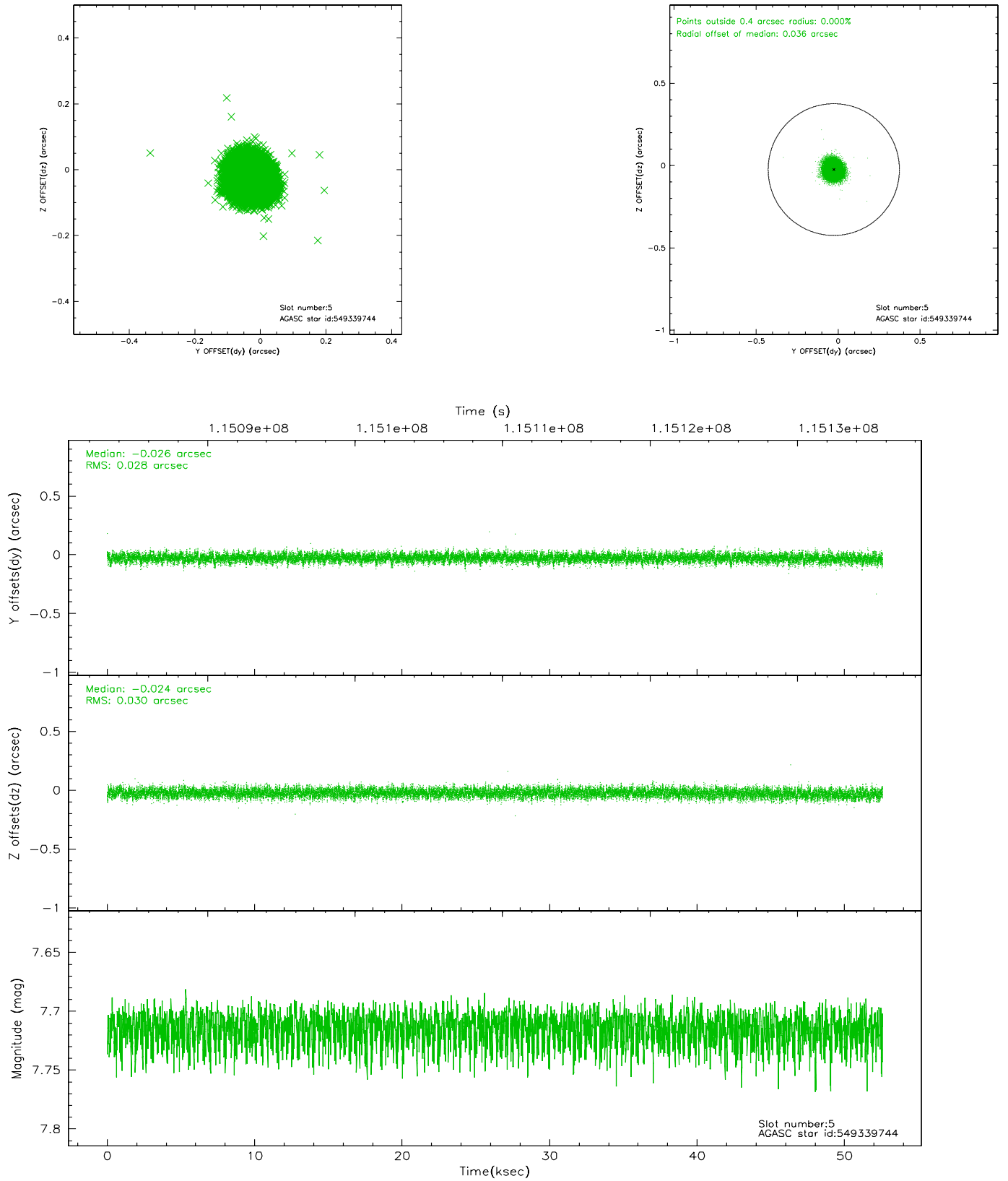
2.4.1 Slot 3



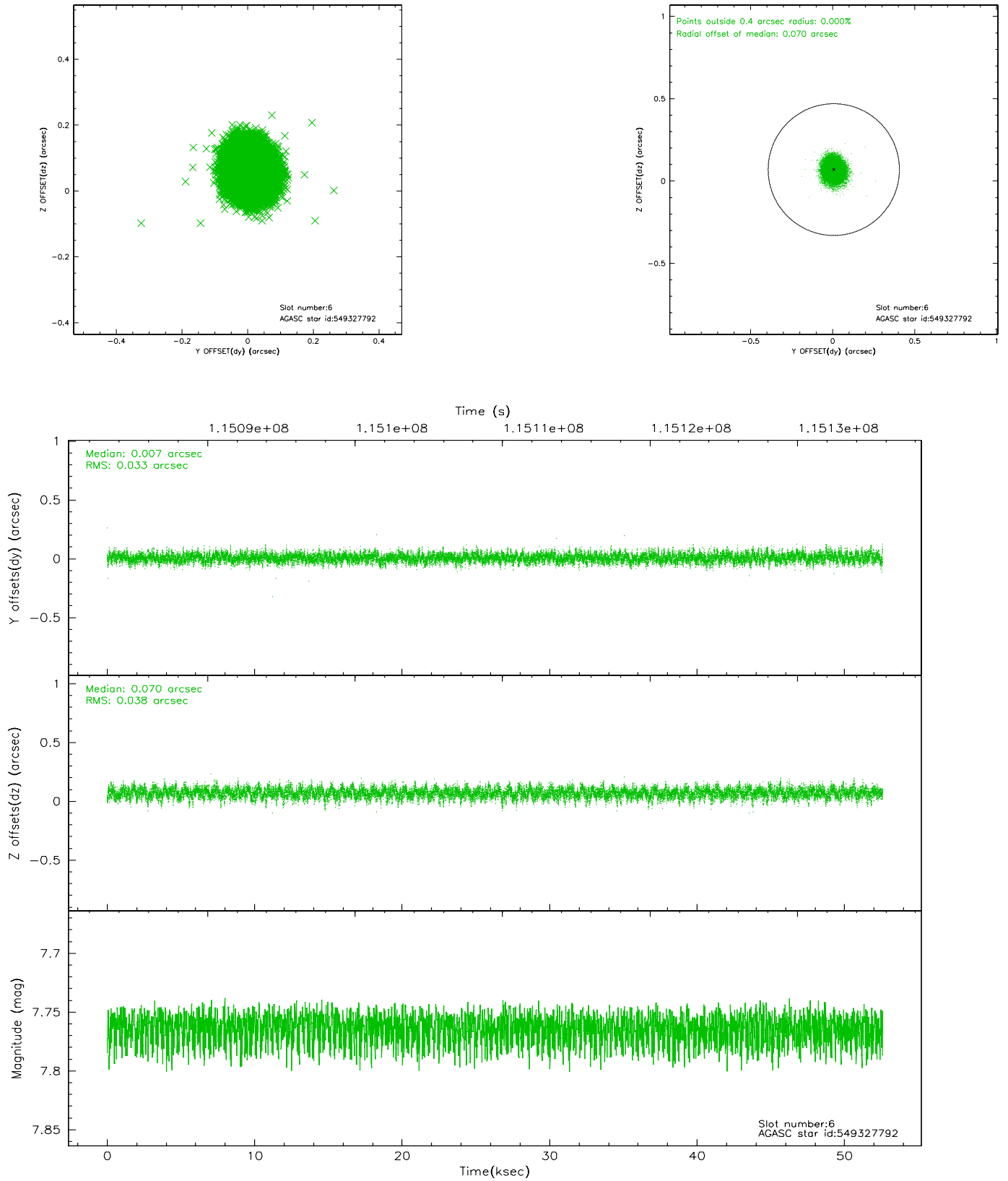
2.4.2 Slot 4



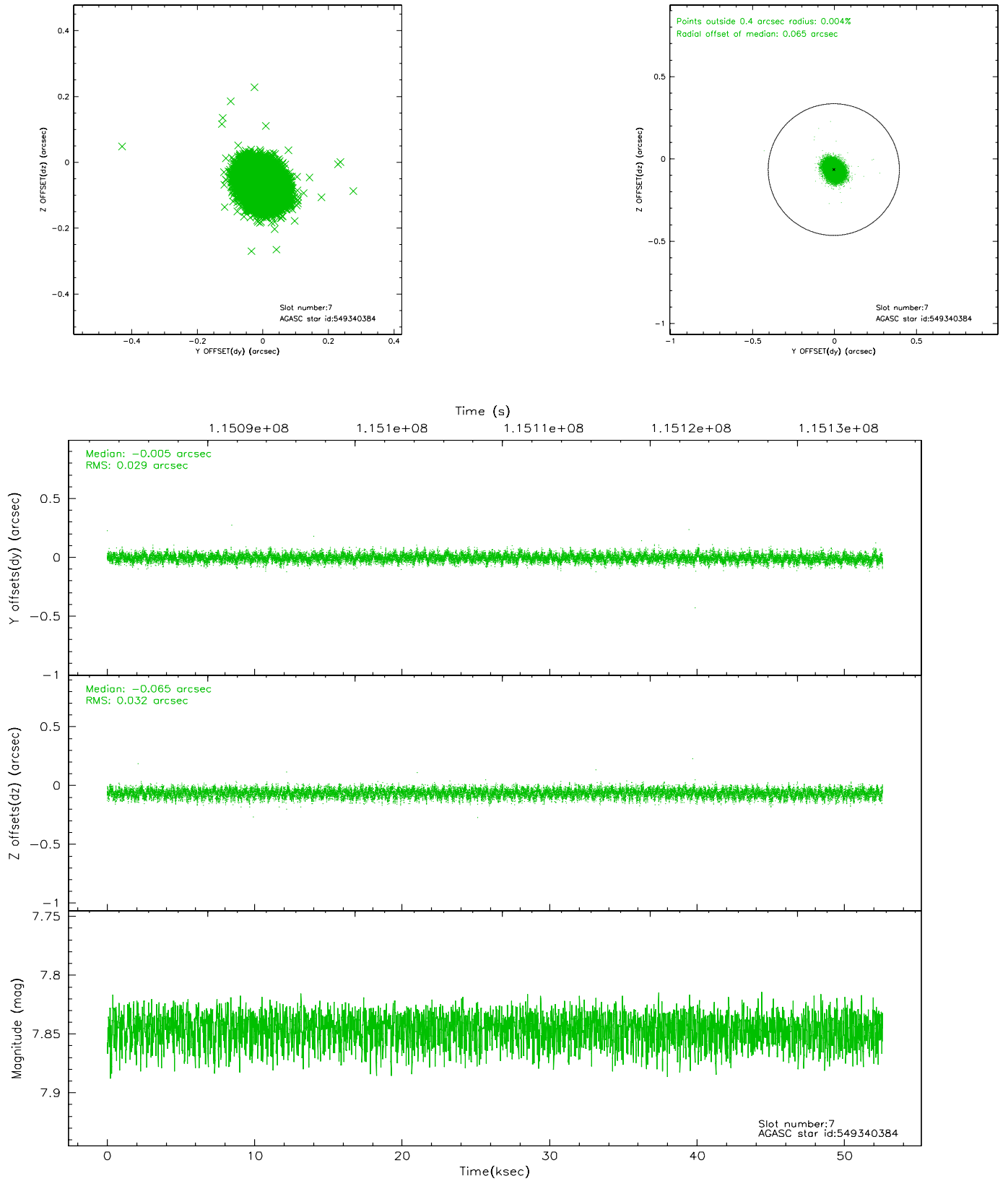
2.4.3 Slot 5



2.4.4 Slot 6

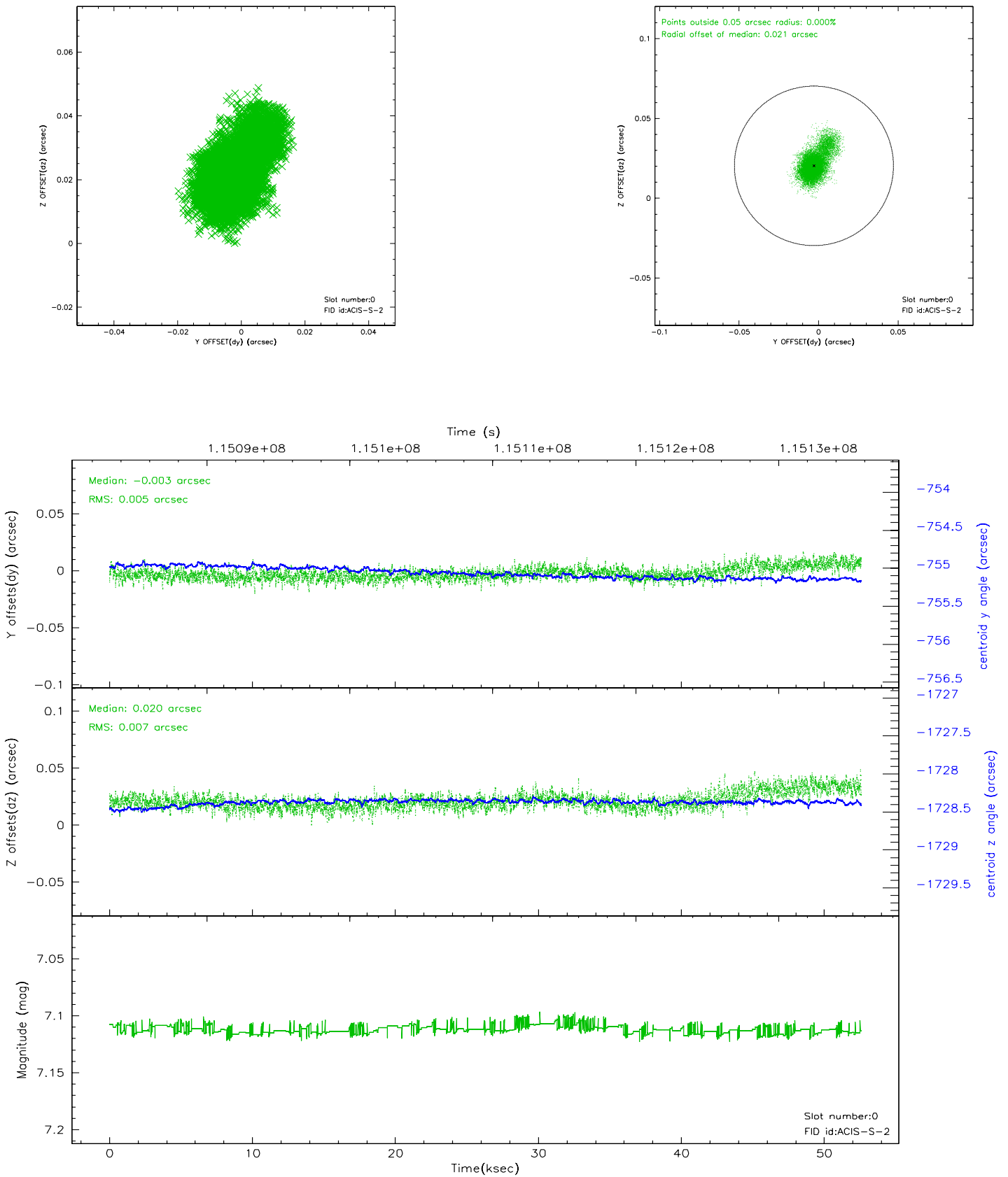


2.4.5 Slot 7

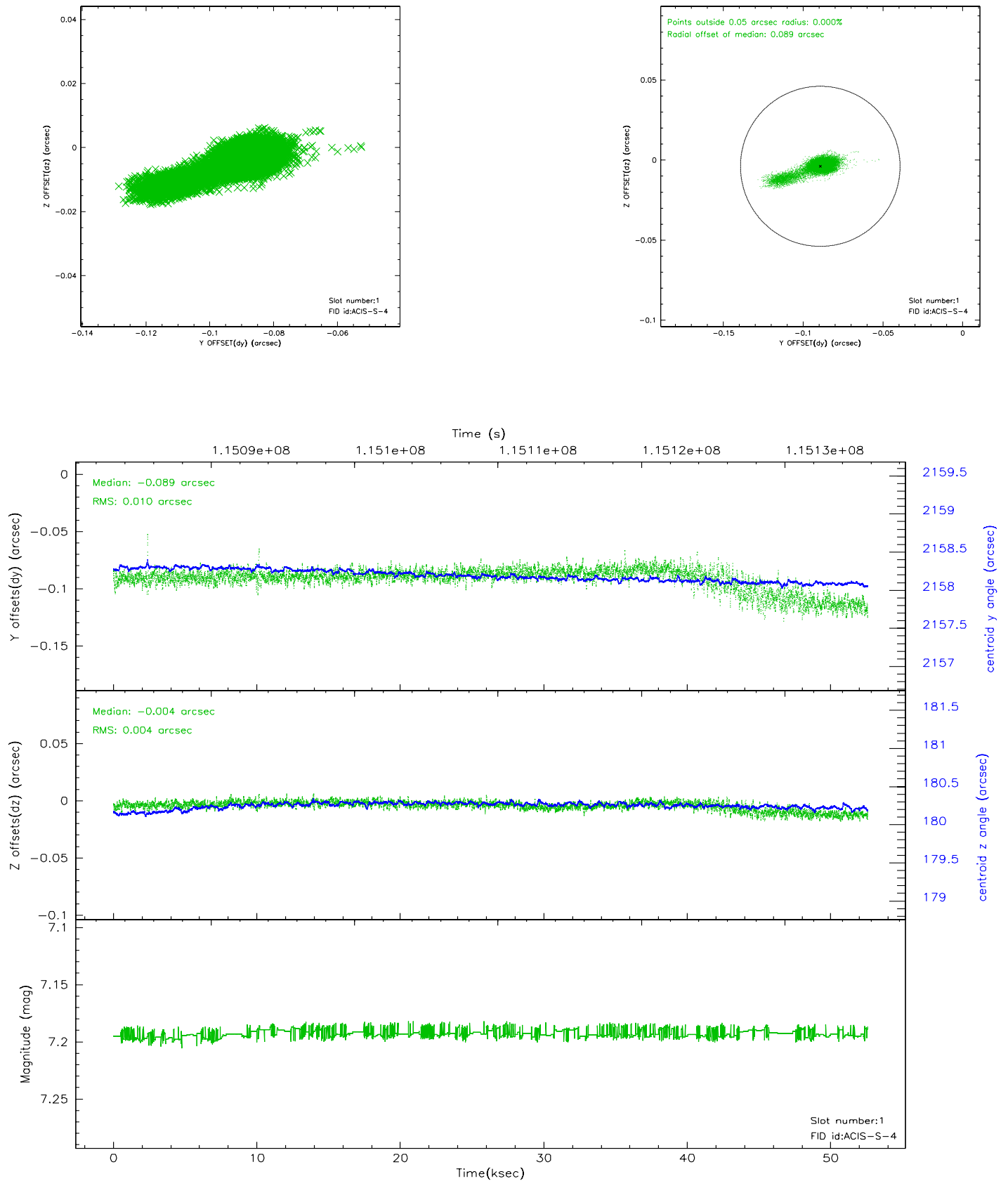


2.5 FID Slots

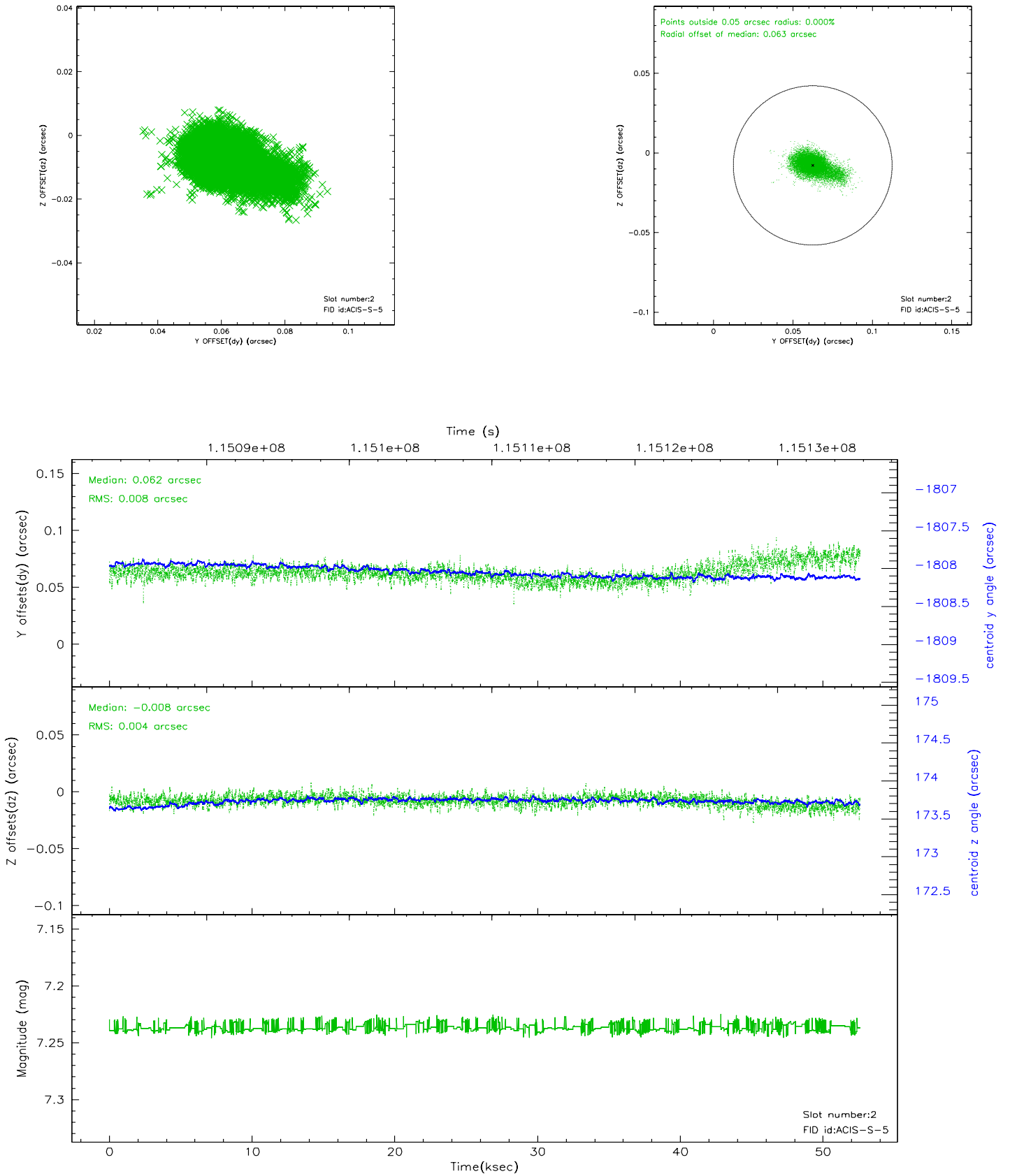
2.5.1 Slot 0



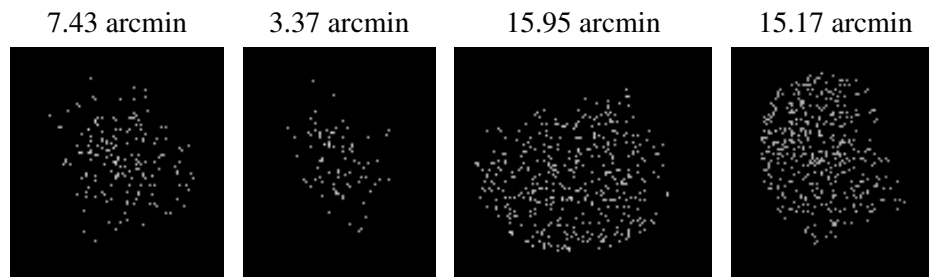
2.5.2 Slot 1



2.5.3 Slot 2



3 Point Sources



A Summary

A.1 Status

V&V Scientist	Jen Lauer
V&V Date (YYYY-MM-DD)	2006.12.22
V&V Edition	1
V&V Disposition and Status	OK
V&V Charge Time	52.149

A.2 Comments