

# V&V Reference Report

## L2 ASCDS Version : 7.6.9

Observation 2114 - L2 Version 001  
Chandra X-Ray Center

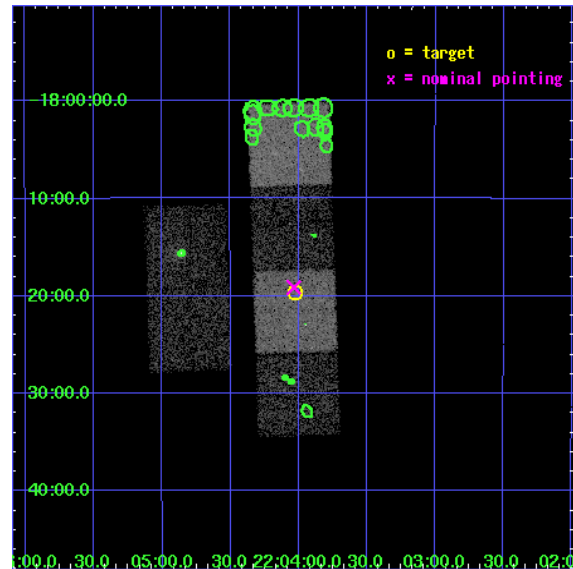
L2 Processing Date : Dec 15 2006

## Contents

<b>1</b>	<b>Front</b>	<b>2</b>
<b>2</b>	<b>OBI</b>	<b>3</b>
2.1	OBI . . . . .	3
2.1.1	Images . . . . .	3
2.1.2	Bias . . . . .	3
2.1.3	Parameters . . . . .	4
2.1.4	Events . . . . .	4
2.2	Compared Parameters . . . . .	5
2.3	Aspect . . . . .	6
2.4	Star Slots . . . . .	9
2.4.1	Slot 3 . . . . .	9
2.4.2	Slot 4 . . . . .	10
2.4.3	Slot 5 . . . . .	11
2.4.4	Slot 6 . . . . .	12
2.4.5	Slot 7 . . . . .	13
2.5	FID Slots . . . . .	14
2.5.1	Slot 0 . . . . .	14
2.5.2	Slot 1 . . . . .	15
2.5.3	Slot 2 . . . . .	16
<b>3</b>	<b>Point Sources</b>	<b>17</b>
<b>A</b>	<b>Summary</b>	<b>18</b>
A.1	Status . . . . .	18
A.2	Comments . . . . .	18

# 1 Front

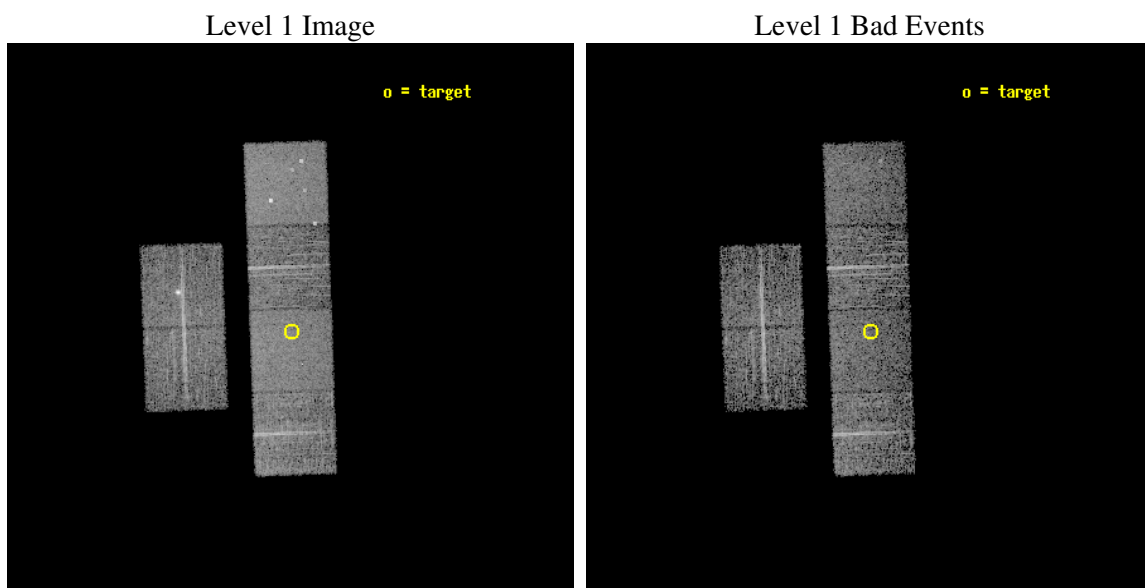
seq_num	700304
obs_id	2114
title	PUBLIC OBSERVATIONS OF A WELL-DEFINED SAMPLE OF BAL QSOS FROM THE LARGE BRIGHT QUASAR SURVEY: REMOVING THE BARRIERS
observer	Prof. William Brandt
object	LBQS 2201-1834
dtcycle	0
cycle	P
ra_targ	331.006667
dec_targ	-18.328444
ra_nom	331.00879849449
dec_nom	-18.318963768601
roll_nom	88.021463918124
revision	2
ontime	5145.6000047922
livetime	5080.4433192232
ontime2	5142.3590345383
ontime3	5145.6000047922
ontime5	5145.6000047922
ontime6	5145.6000047922
ontime7	5145.6000047922
ontime8	5145.6000047922
l2events	50345



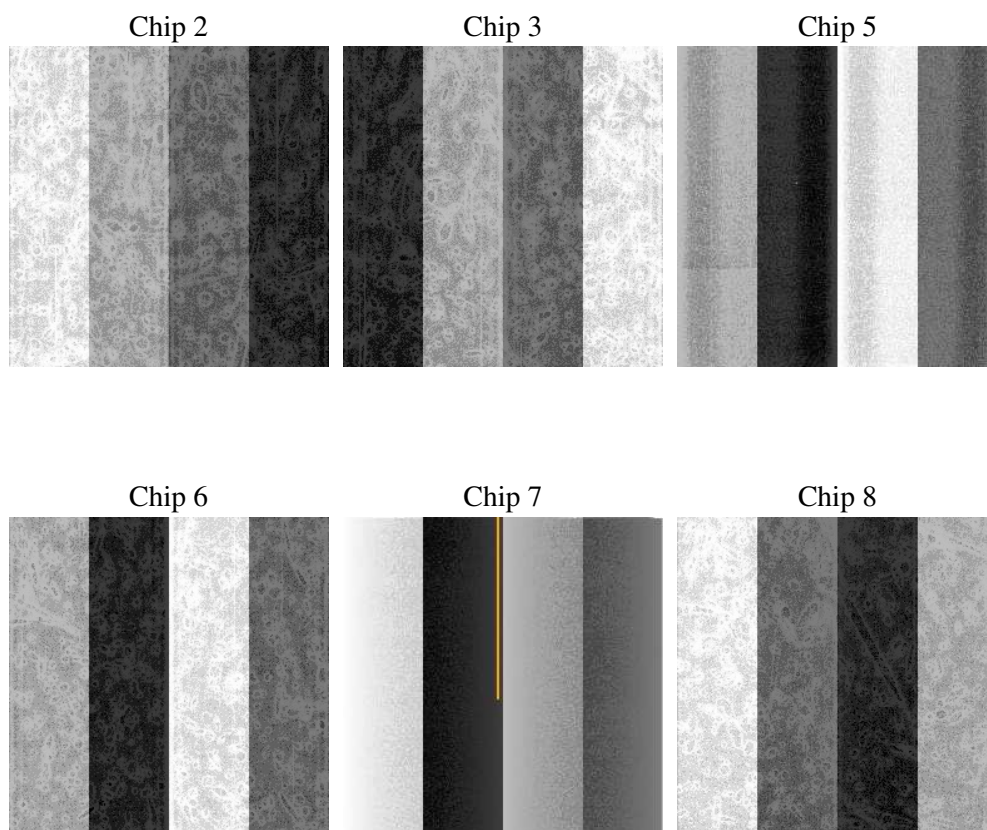
## 2 OBI

### 2.1 OBI

#### 2.1.1 Images



#### 2.1.2 Bias



### 2.1.3 Parameters

obi_num	0
ascdsver	7.6.9
caldsver	3.2.4
date	2006-12-16T02:53:07
revision	2

sched_exp_time	5000.000000
ontime	5292.5554083437
ontime2	5289.3144181818
ontime3	5292.5553884357
ontime5	5292.5554083437
ontime6	5292.5553884357
ontime7	5292.5554083437
ontime8	5292.5554083437
l1events	238489

### 2.1.4 Events

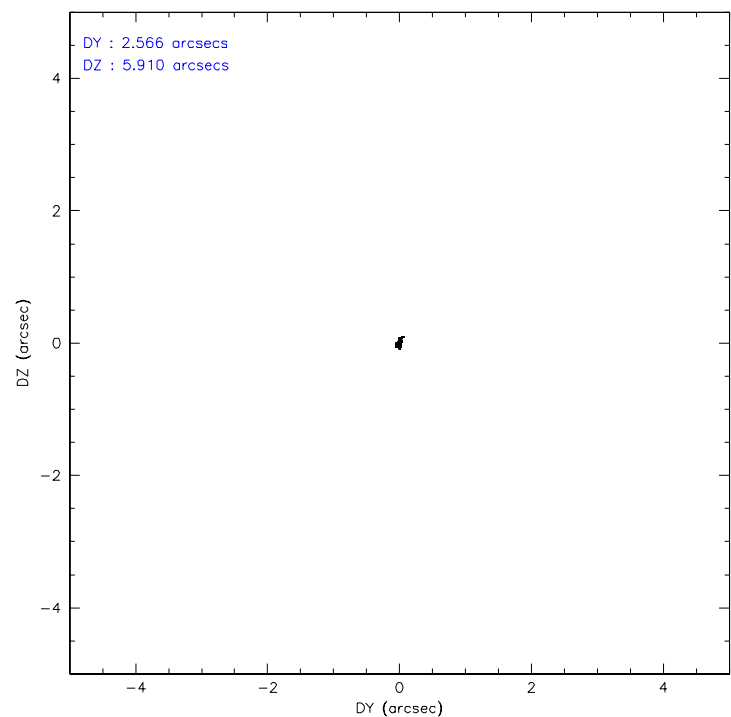
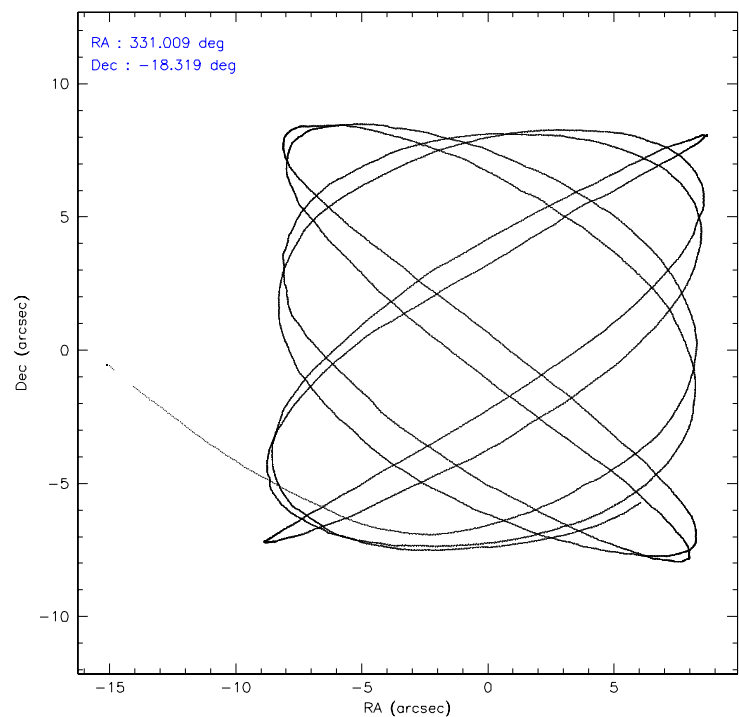
	ccd 2	ccd 3	ccd 5	ccd 6	ccd 7	ccd 8
level 1 events	34823	33211	49290	34799	43780	42586
rejected events	29592	29606	27451	30905	27185	34476
rejected %	84%	89%	55%	88%	62%	80%

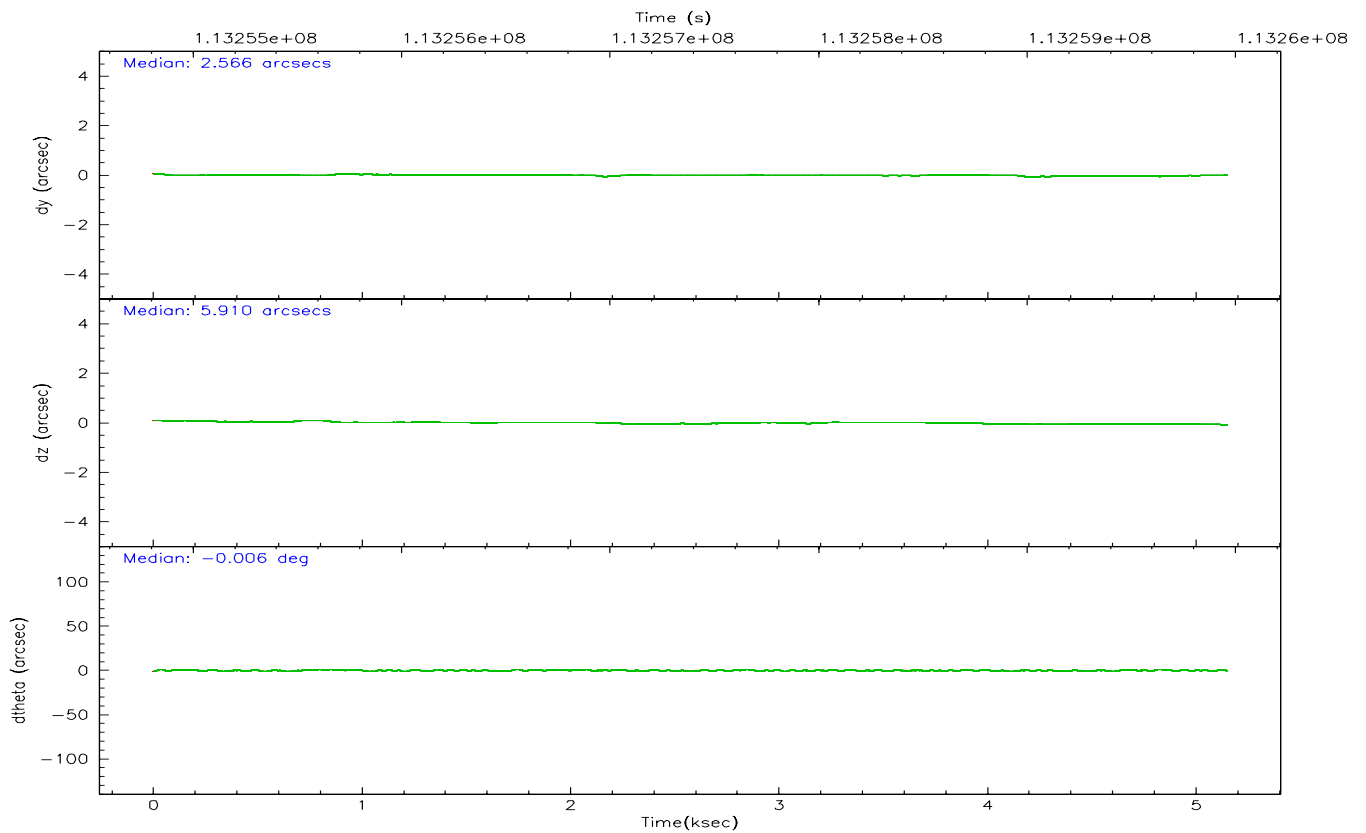
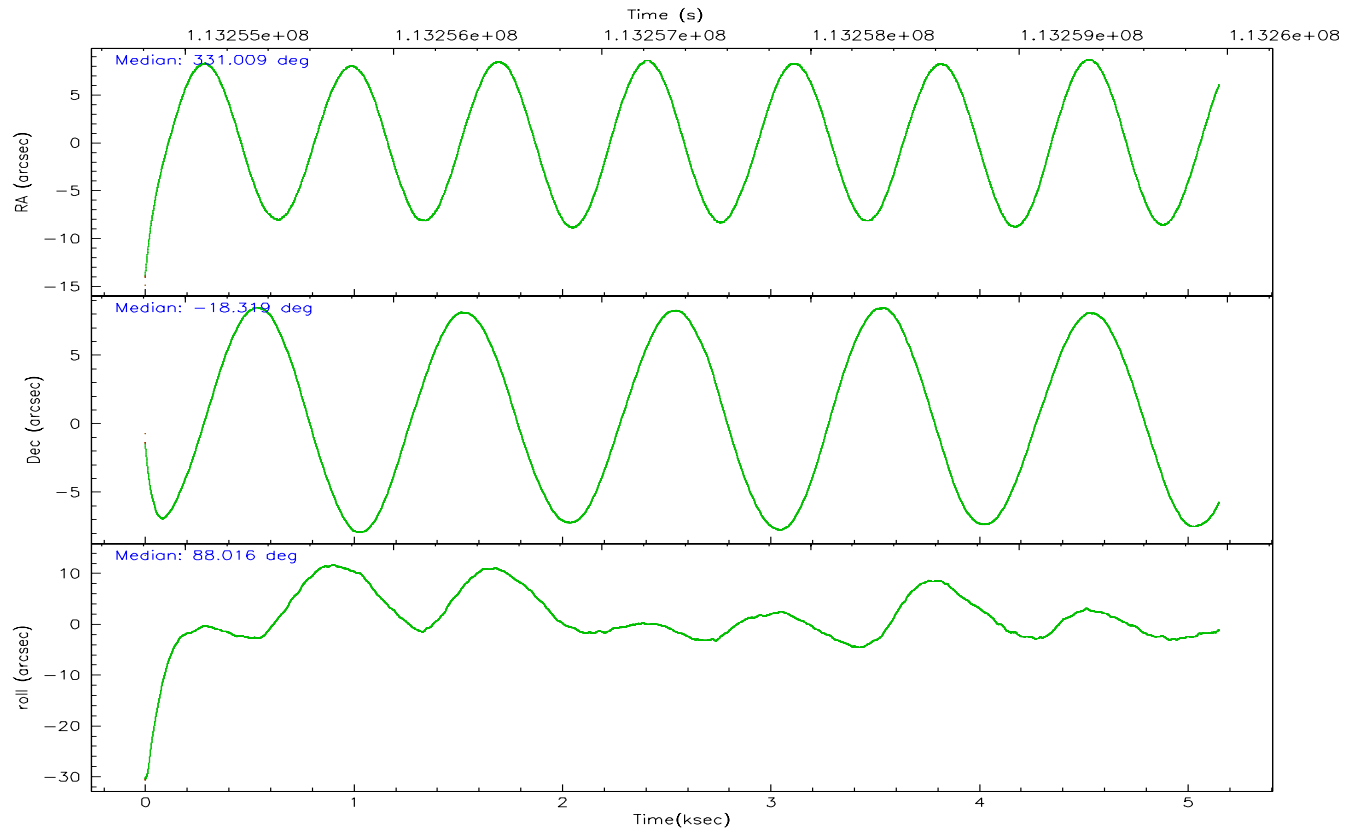
	ccd 2	ccd 3	ccd 5	ccd 6	ccd 7	ccd 8
grade 0 events	2963	1578	2990	1613	1170	2702
	8%	4%	6%	4%	2%	6%
grade 1 events	24	17	41	14	23	29
	0%	0%	0%	0%	0%	0%
grade 2 events	1012	699	6470	843	4181	1771
	2%	2%	13%	2%	9%	4%
grade 3 events	383	398	581	369	937	933
	1%	1%	1%	1%	2%	2%
grade 4 events	387	350	515	386	942	936
	1%	1%	1%	1%	2%	2%
grade 5 events	1189	1323	2358	1495	3057	1796
	3%	3%	4%	4%	6%	4%
grade 6 events	652	677	11887	804	9897	2039
	1%	2%	24%	2%	22%	4%
grade 7 events	28213	28169	24448	29275	23573	32380
	81%	84%	49%	84%	53%	76%

## 2.2 Compared Parameters

Parameter	Planned	Actual	Parameter	Planned	Actual
Instrument	ACIS	ACIS	Obspar format version number	6	6
Detector	ACIS-235678	ACIS-235678	Obspar file type	PREDICTED	ACTUAL
Grating	NONE	NONE	Obspar update status	NONE	UPDATED
Data mode	FAINT	FAINT	Number of optional ACIS chips dropped	0	0
Observation mode	POINTING	POINTING	On-chip summing requested	N	N
Pointing RA	331.022618	331.0087984944932	Subarray requested	NONE	NONE
Pointing Dec	-18.342856	-18.31896376860147	Alternating exposures requested	N	N
Pointing Roll	87.869213	88.02146391812448	Primary exposure time	0.000000	3.2
SIM focus pos (mm)	-0.684267	-0.6828225247311905			
SIM defocus (mm)	0	0.001444936568705701			
SIM translation stage pos (mm)	-190.132523	-190.1400660498719			
SIM translation stage offset (mm)	0	0.00754346686406393			
Observation start time	113254958.184000	113253828.90861			
Observation start date	2001-08-03T19:41:34	2001-08-03T19:23:48			
Observation end time	113259958.184000	113261481.55891			
Observation end date	2001-08-03T21:04:54	2001-08-03T21:31:21			
Read mode	TIMED	TIMED			

2.3 Aspect





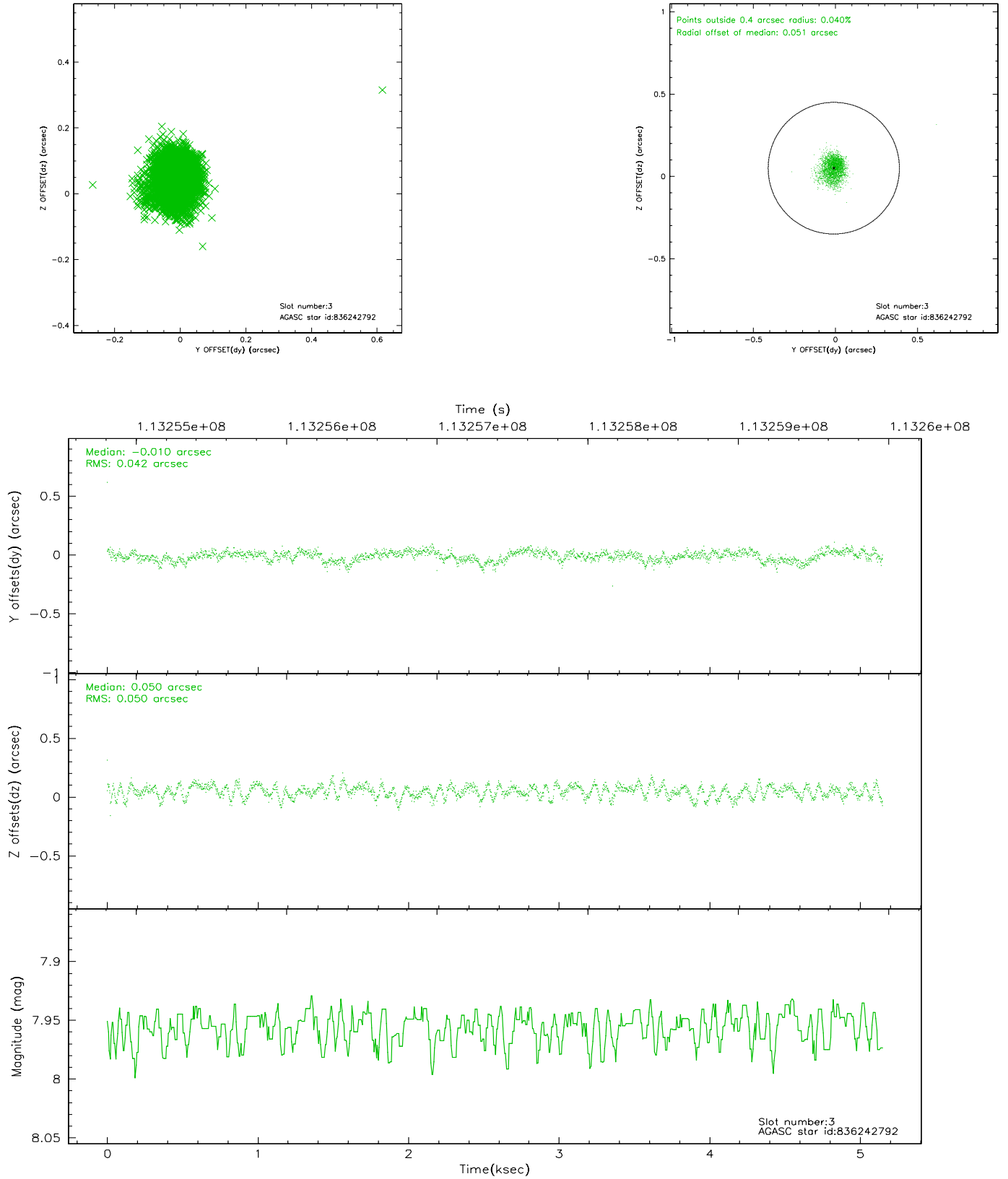
### Slot Statistics

slot	status	id	mag	n_pts	med_dy	med_dz	dr1	dr2	ra	dec	mean_y	mean_z
0	FID	ACIS-S-2	7.11	1257	-0.024	0.027	0.006	0.010	0.000000	0.000000	-755.17	-1727.04
1	FID	ACIS-S-4	7.20	1257	-0.069	0.004	0.005	0.009	0.000000	0.000000	2157.48	180.29
2	FID	ACIS-S-5	7.24	1257	0.062	-0.022	0.006	0.010	0.000000	0.000000	-1806.46	175.16
3	GUIDE	836242792	7.96	2511	-0.010	0.050	0.067	0.111	331.450637	-18.668198	-1117.77	-1502.85
4	GUIDE	836244904	9.10	2514	0.007	0.100	0.076	0.123	331.477115	-18.930821	-2059.96	-1626.52
5	GUIDE	836249968	9.37	2514	-0.125	0.024	0.140	0.217	331.315587	-17.697275	2358.13	-918.57
6	GUIDE	836246360	9.89	2497	0.144	0.022	0.125	0.194	331.304626	-18.833846	-1730.22	-1026.80
7	GUIDE	836122672	9.58	2511	-0.019	-0.185	0.122	0.199	330.300629	-18.597479	-1013.50	2426.45

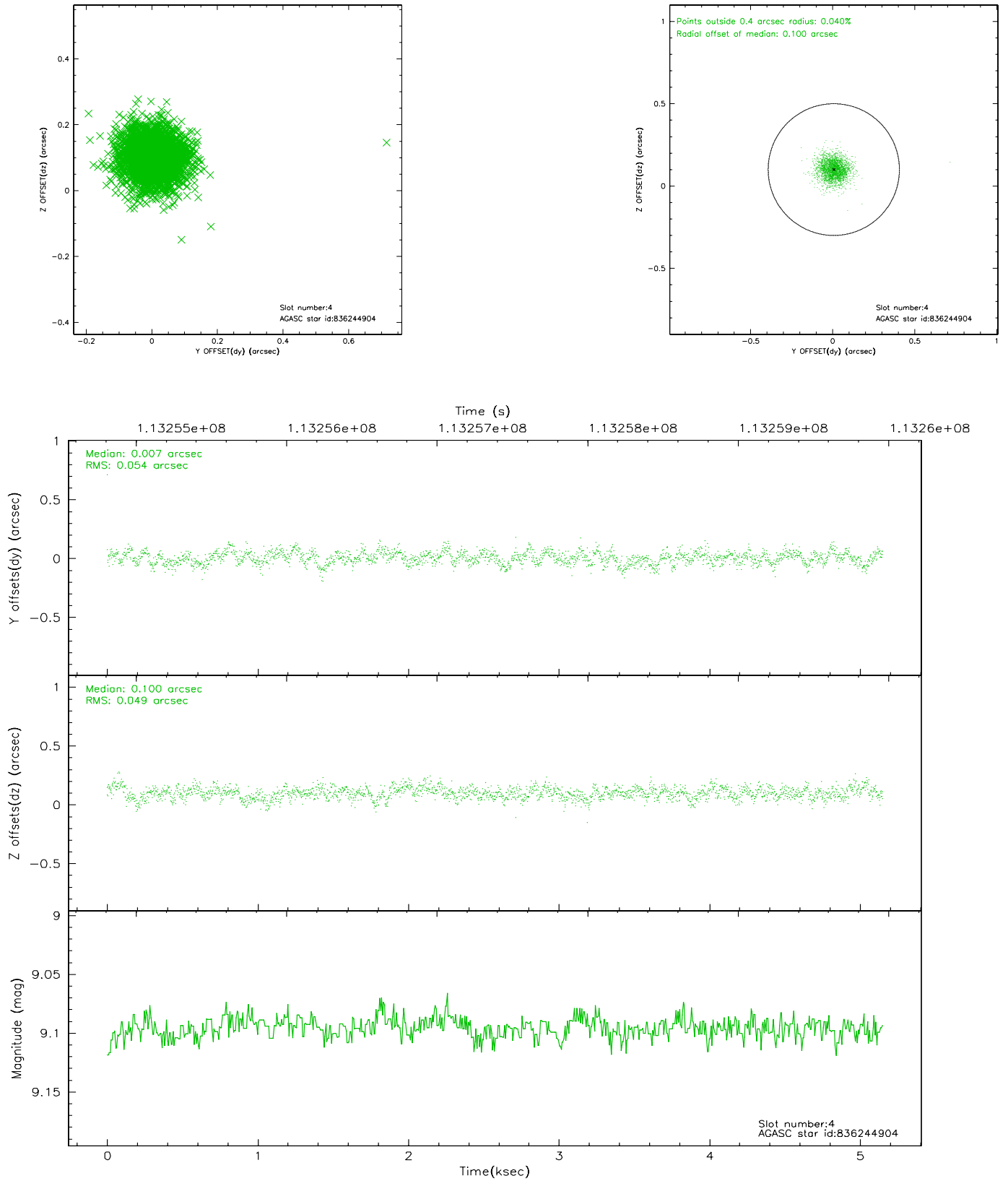


## 2.4 Star Slots

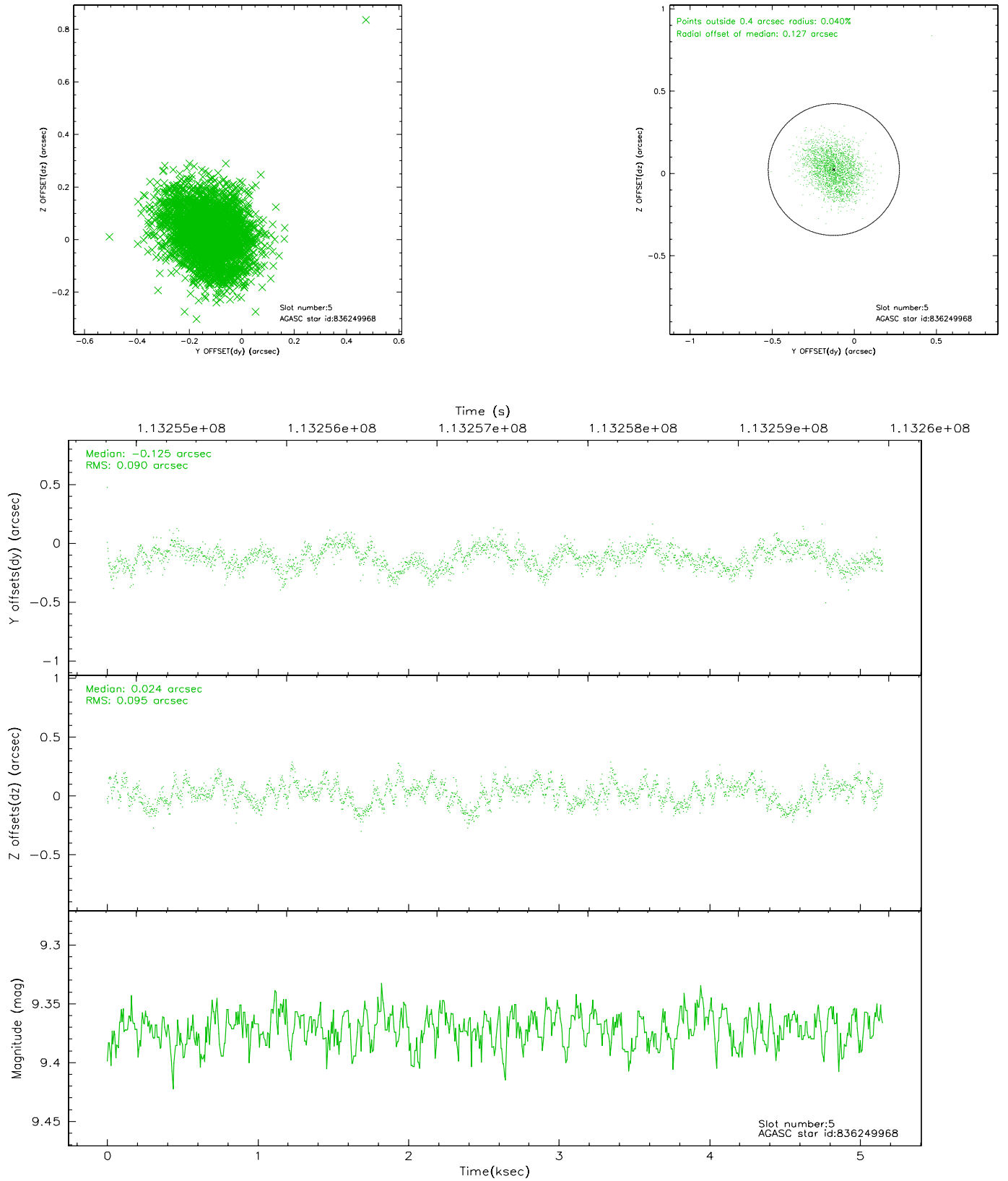
### 2.4.1 Slot 3



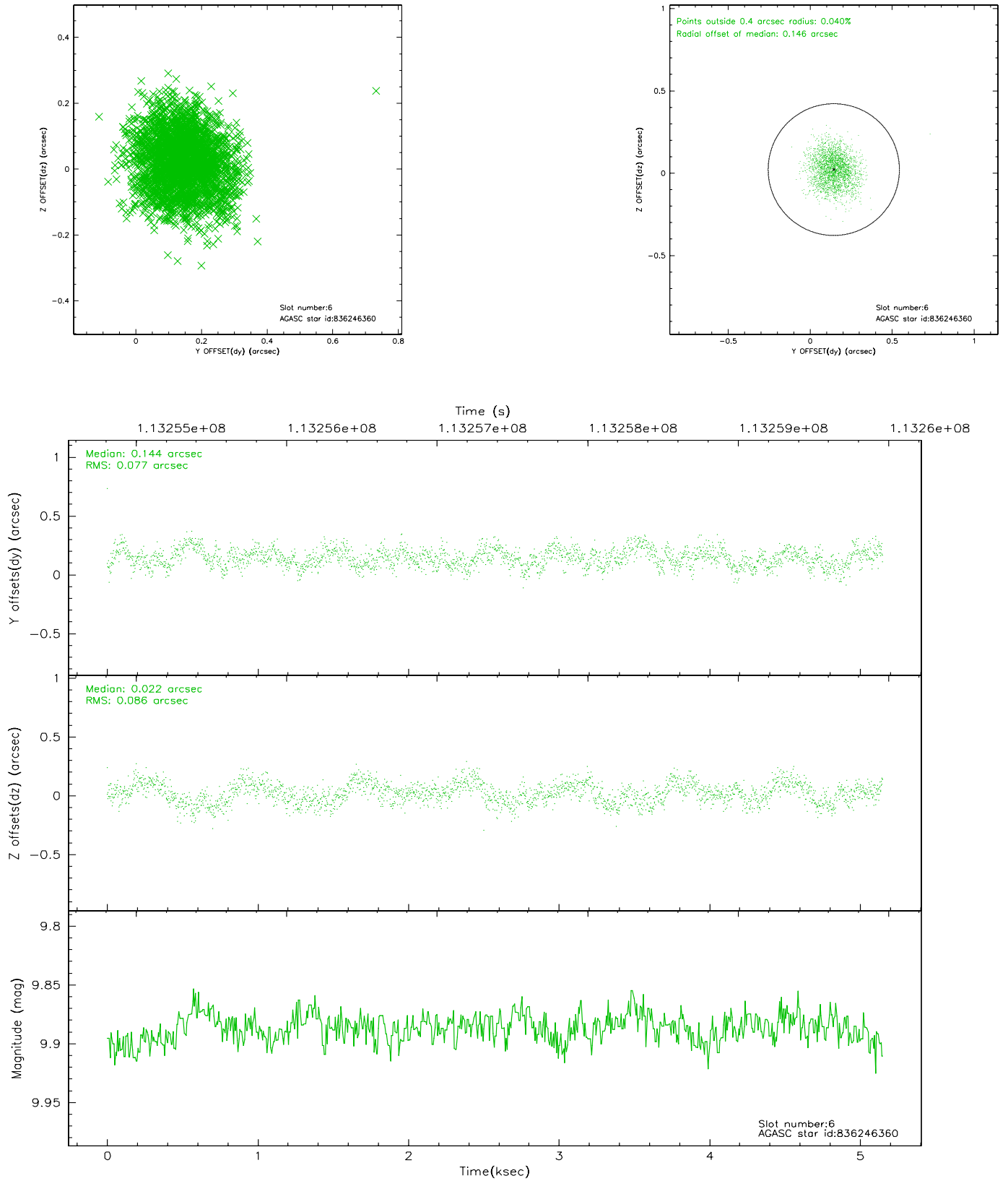
## 2.4.2 Slot 4



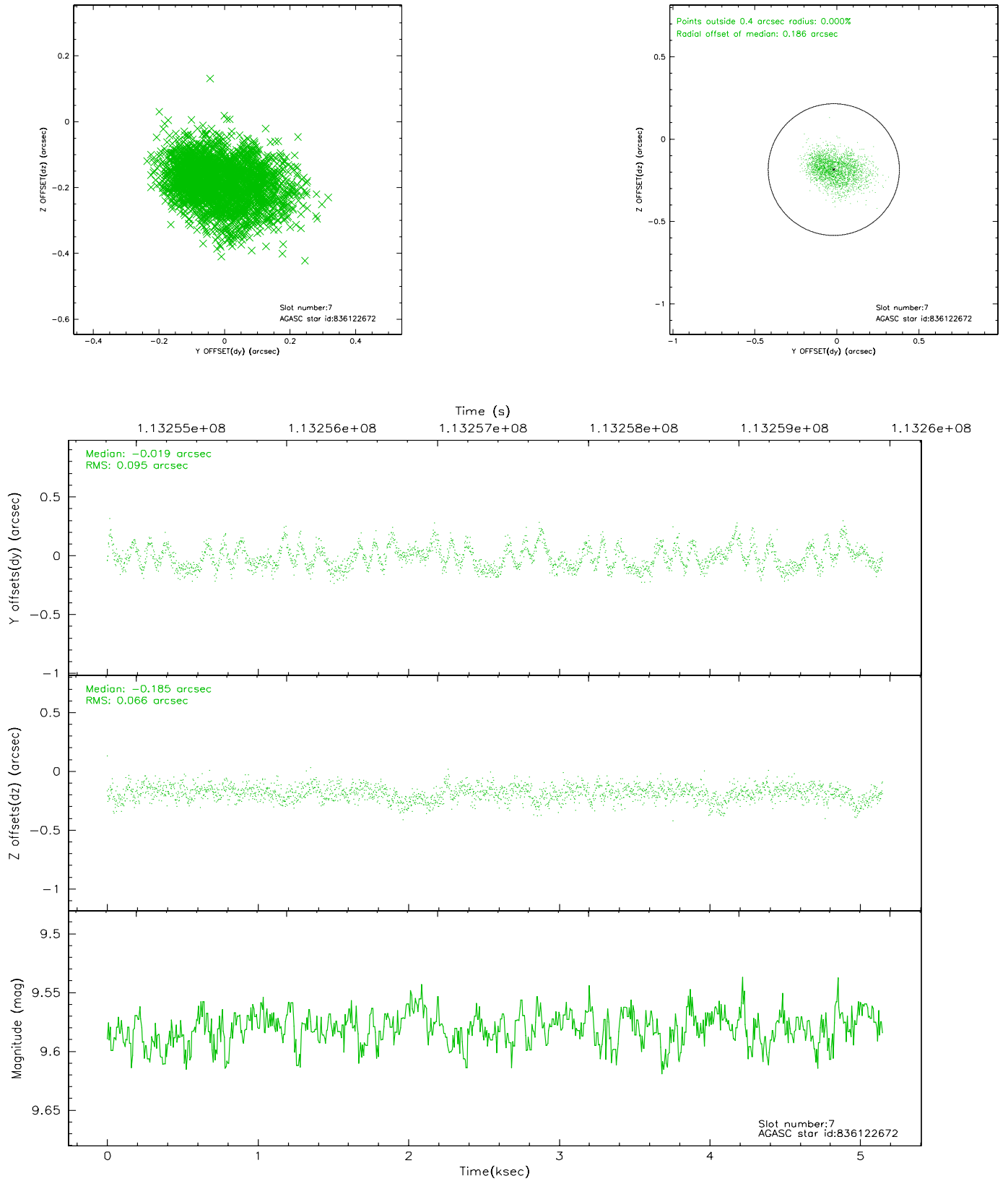
### 2.4.3 Slot 5



## 2.4.4 Slot 6

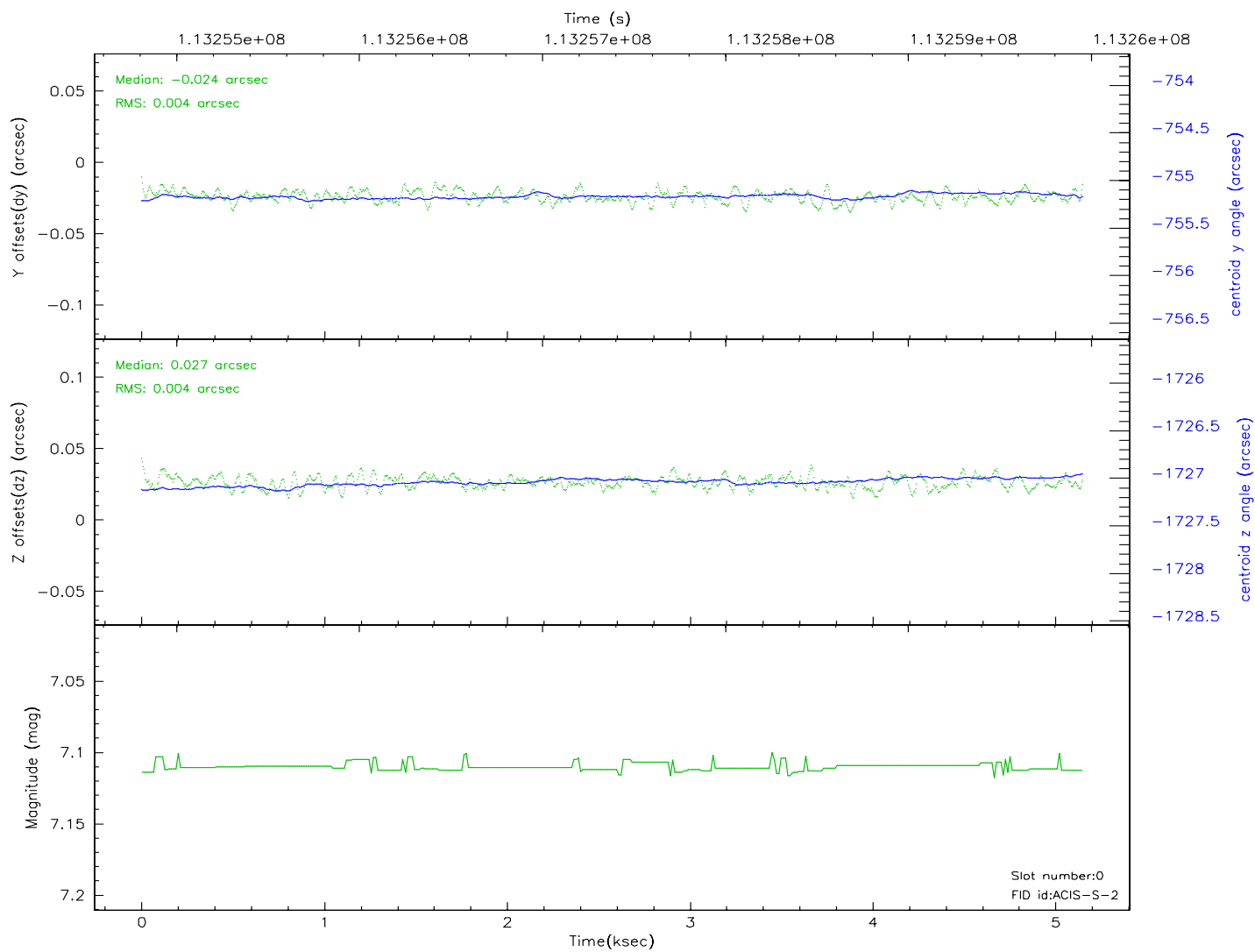
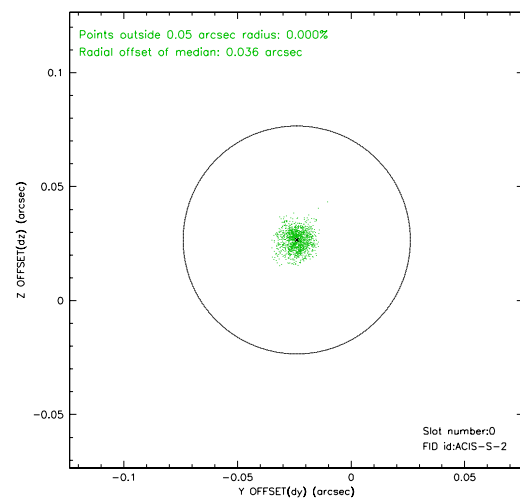
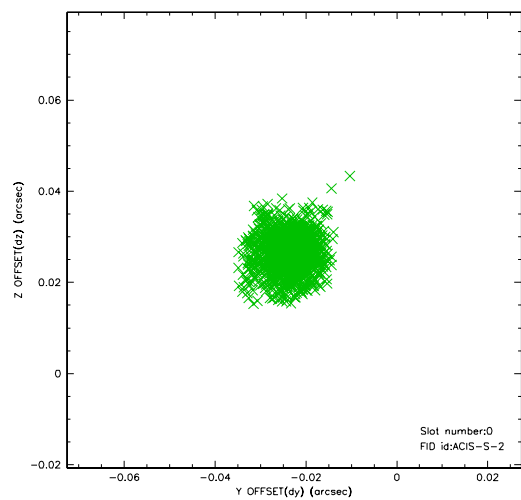


## 2.4.5 Slot 7

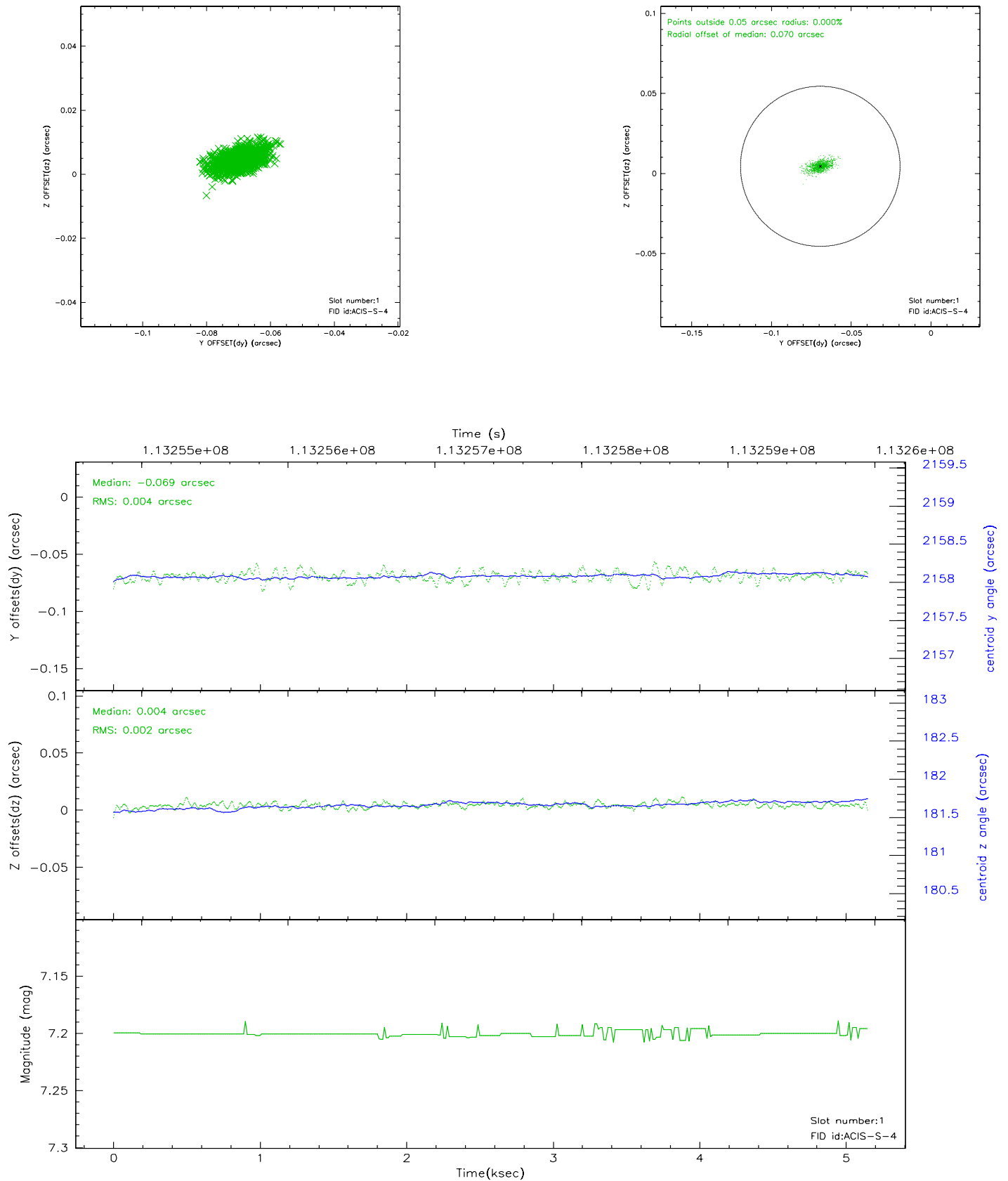


## 2.5 FID Slots

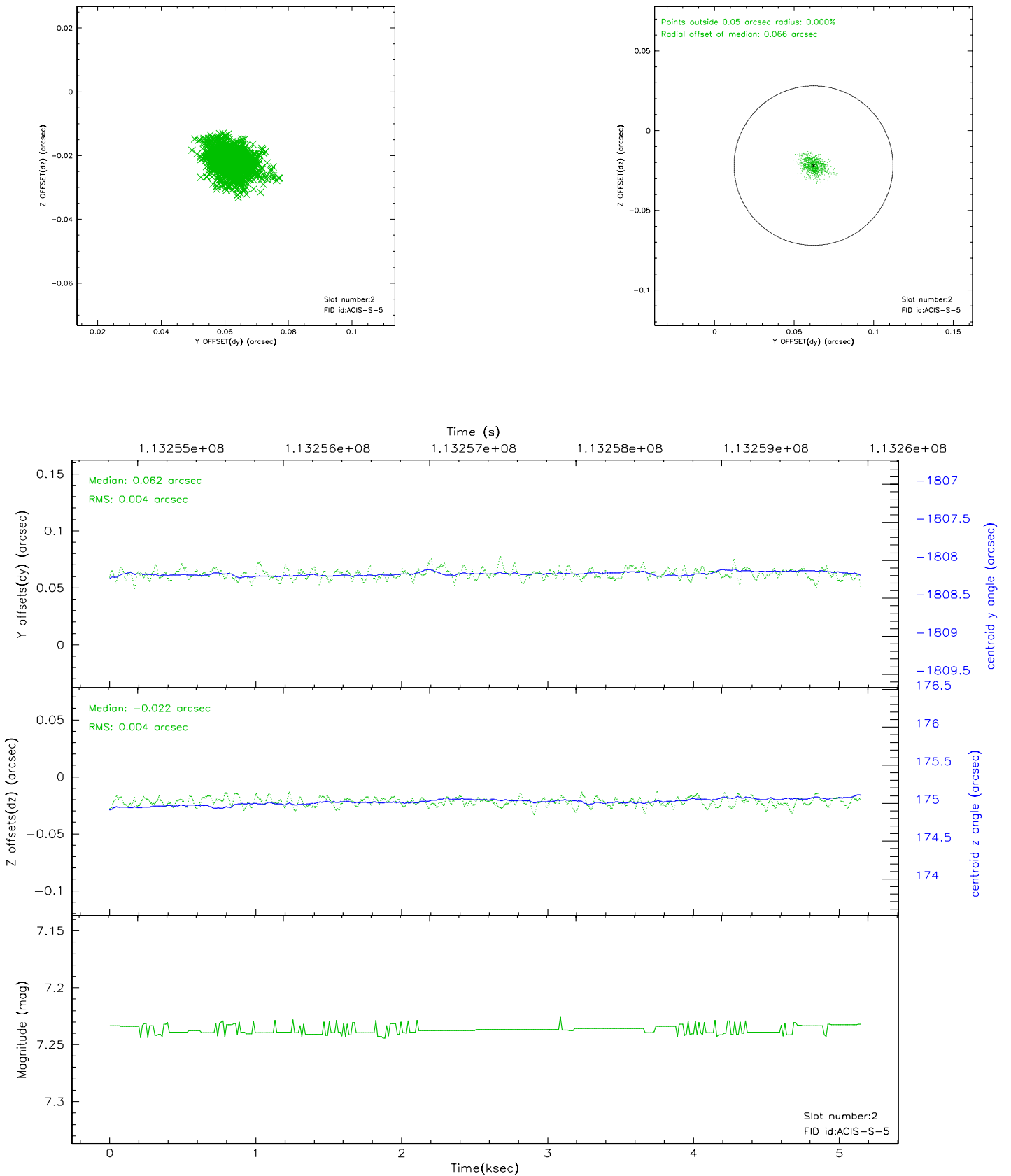
### 2.5.1 Slot 0



## 2.5.2 Slot 1

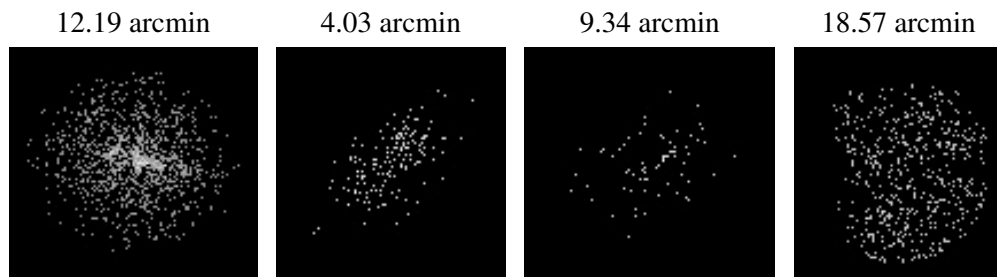


### 2.5.3 Slot 2





### 3 Point Sources



## A Summary

### A.1 Status

V&V Scientist	Beth Sundheim
V&V Date (YYYY-MM-DD)	2006.12.17
V&V Edition	1
V&V Disposition and Status	OK
V&V Charge Time	5.146

### A.2 Comments