

V&V Reference Report

L2 ASCDS Version : 8.4.5

Observation 2101 - L2 Version 3
Chandra X-Ray Center

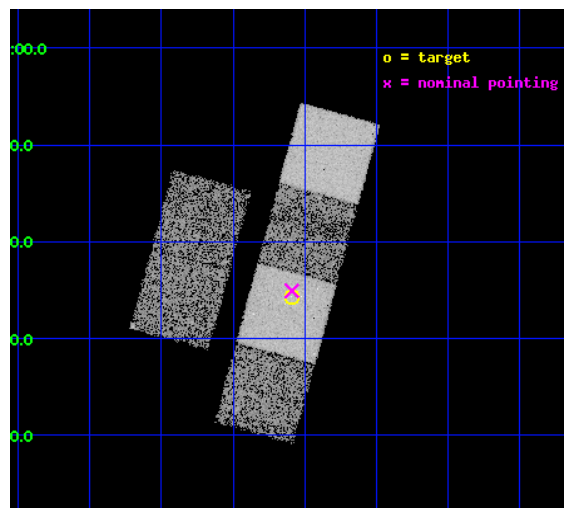
L2 Processing Date : Sep 20 2012

Contents

1	Front	2
2	OBI	3
2.1	OBI	3
2.1.1	Images	3
2.1.2	Bias	3
2.1.3	Parameters	4
2.1.4	Events	4
2.2	Compared Parameters	5
2.3	Aspect	6
2.4	Star Slots	9
2.4.1	Slot 3	9
2.4.2	Slot 4	10
2.4.3	Slot 5	11
2.4.4	Slot 6	12
2.4.5	Slot 7	13
2.5	FID Slots	14
2.5.1	Slot 0	14
2.5.2	Slot 1	15
2.5.3	Slot 2	16
A	Summary	17
A.1	Status	17
A.2	Comments	17

1 Front

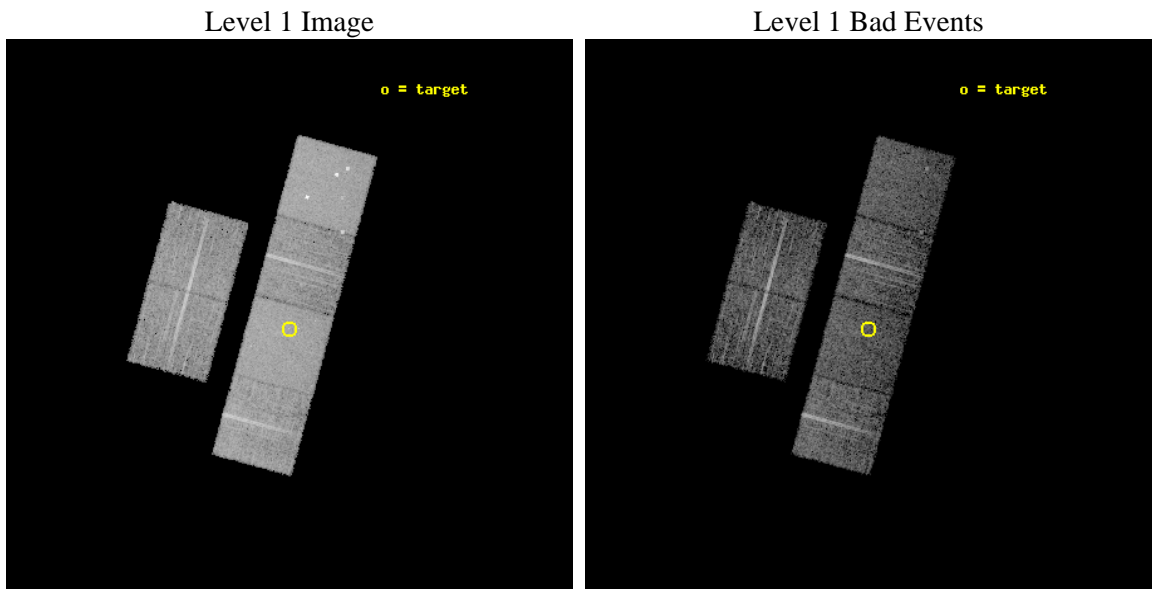
seq_num	700291	Sequence number
obs_id	2101	Observation id
title	PUBLIC OBSERVATIONS OF A WELL-DEFINED SAMPLE OF BAL QSOs FROM THE LARGE BRIGHT QUASAR SURVEY: REMOVING THE BARRIERS	Proposal title
observer	Prof. William Brandt	Principal investigator
object	LBQS 0029+0017	Source name
dtcycle	0	
cycle	P	events from which exps? Prim/Second/Both
ra_targ	7.898333	Observer's specified target RA [deg]
dec_targ	0.572389	Observer's specified target Dec [deg]
ra_nom	7.8974913047156	Nominal RA [deg]
dec_nom	0.58207108716542	Nominal Dec [deg]
roll_nom	105.21212290571	Nominal Roll [deg]
revision	3	Processing version of data
ontime	6768.0000062883	Sum of GTIs [s]
livetime	6682.2995150083	Livetime [s]
ontime2	6768.0000062883	Sum of GTIs [s]
ontime3	6768.0000062883	Sum of GTIs [s]
ontime5	6768.0000062883	Sum of GTIs [s]
ontime6	6768.0000062883	Sum of GTIs [s]
ontime7	6768.0000062883	Sum of GTIs [s]
ontime8	6764.7591856569	Sum of GTIs [s]
l2events	86224	Number of level 2 events



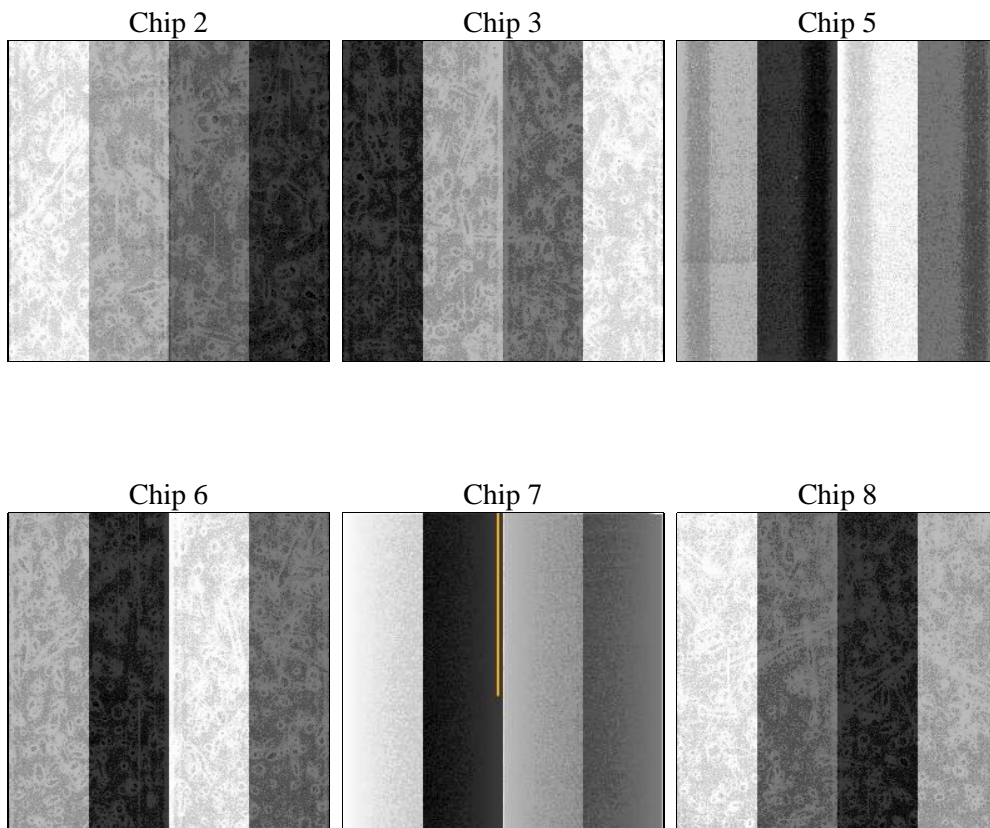
2 OBI

2.1 OBI

2.1.1 Images



2.1.2 Bias



2.1.3 Parameters

obi_num	0	Obi number	sched_exp_time	7012.570000	[s] Scheduled observation exposure time
ascdsver	8.4.5	Processing system revision	ontime	6768.0000062883	Sum of GTIs [s]
caldsver	4.5.1.1	 	ontime2	6768.0000062883	Sum of GTIs [s]
date	2012-09-20T03:52:47	Date and time of file creation	ontime3	6768.0000062883	Sum of GTIs [s]
revision	3	Processing version of data	ontime5	6768.0000062883	Sum of GTIs [s]
			ontime6	6768.0000062883	Sum of GTIs [s]
			ontime7	6768.0000062883	Sum of GTIs [s]
			ontime8	6764.7591856569	Sum of GTIs [s]
			l1events	331326	Number of level 1 events

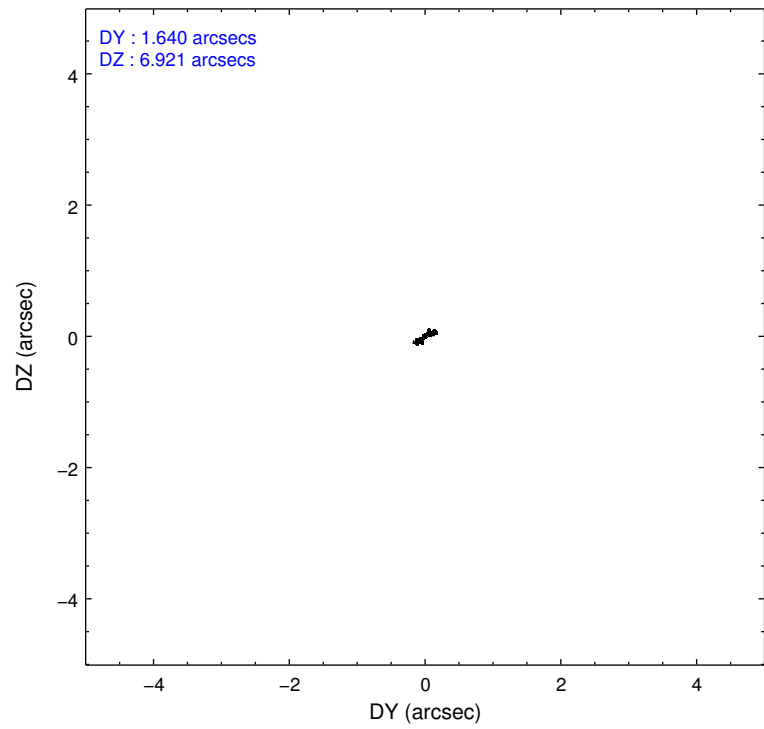
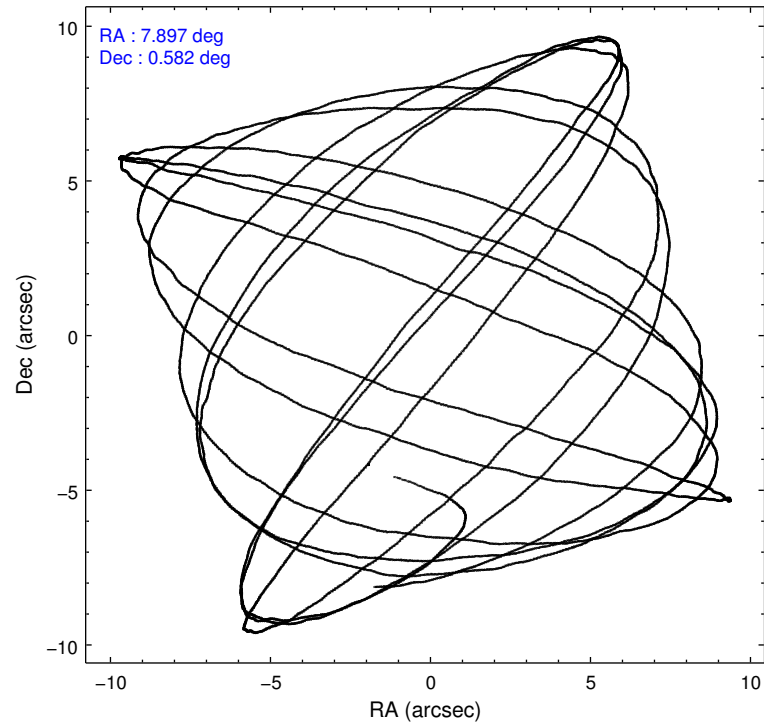
2.1.4 Events

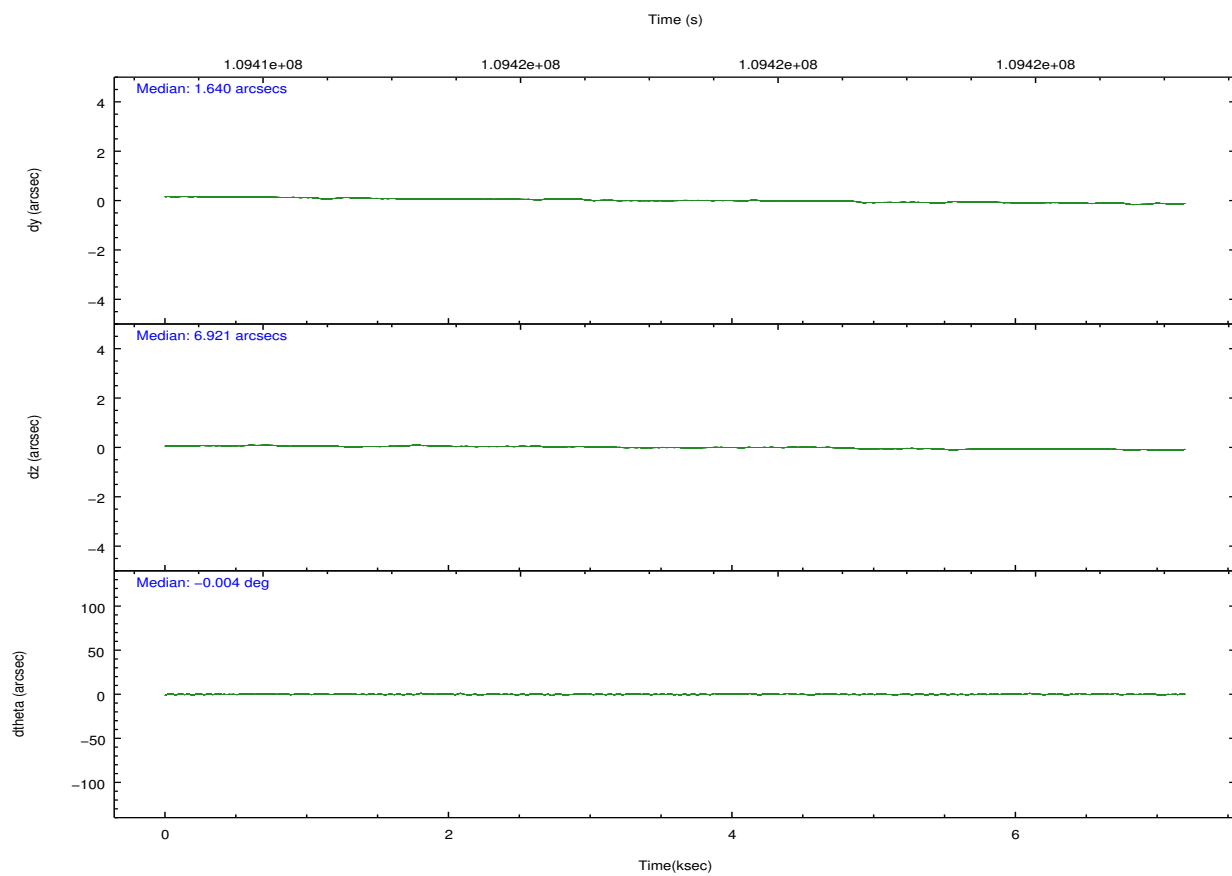
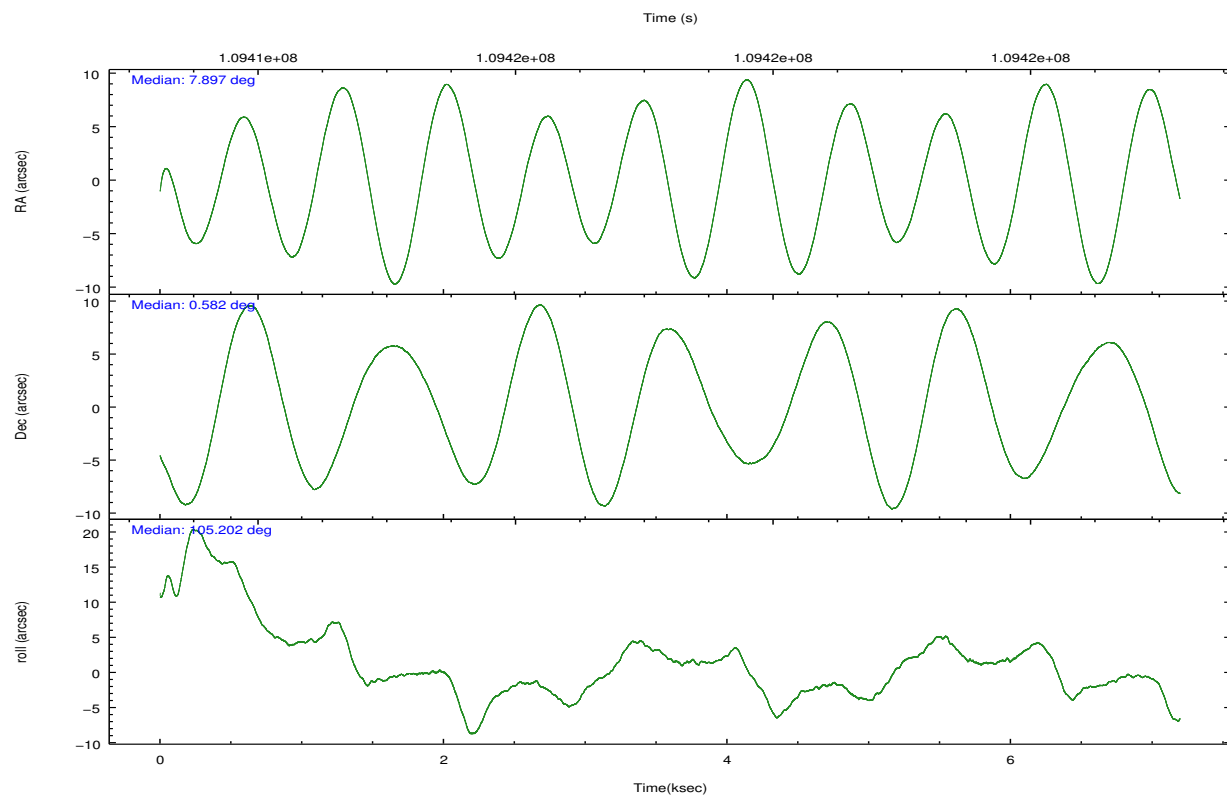
	ccd 2	ccd 3	ccd 5	ccd 6	ccd 7	ccd 8		ccd 2	ccd 3	ccd 5	ccd 6	ccd 7	ccd 8
level 1 events	44905	44571	72301	46631	63869	59049	grade 0 events	3084	3136	7996	3193	3244	4573
rejected events	38725	38284	33641	40177	32839	46673		6%	7%	11%	6%	5%	7%
rejected %	86%	85%	46%	86%	51%	79%	grade 1 events	31	30	251	20	51	41
								0%	0%	0%	0%	0%	0%
							grade 2 events	1205	1162	9983	1210	6043	2444
								2%	2%	13%	2%	9%	4%
							grade 3 events	504	525	1751	534	2671	1222
								1%	1%	2%	1%	4%	2%
							grade 4 events	476	532	1785	516	2760	1121
								1%	1%	2%	1%	4%	1%
							grade 5 events	1455	1639	4832	1796	5509	2250
								3%	3%	6%	3%	8%	3%
							grade 6 events	912	934	17162	1003	16325	3018
								2%	2%	23%	2%	25%	5%
							grade 7 events	37238	36613	28541	38359	27266	44380
								82%	82%	39%	82%	42%	75%

2.2 Compared Parameters

Parameter	Planned	Actual	Parameter	Planned	Actual
Instrument	ACIS	ACIS	Obspar format version number	7	7
Detector	ACIS-235678	ACIS-235678	Obspar file type	PREDICTED	ACTUAL
Grating	NONE	NONE	Obspar update status	NONE	UPDATED
Data mode	FAINT	FAINT	Number of optional ACIS chips dropped	0	0
Observation mode	POINTING	POINTING	On-chip summing requested	N	N
[deg] Pointing RA	7.917060	7.897491304715615	Subarray requested	NONE	NONE
[deg] Pointing Dec	0.563100	0.5820710871654194	Alternating exposures requested	N	N
[deg] Pointing Roll	105.055307	105.2121229057124	[s] Primary exposure time	0.000000	3.2
[mm] SIM focus pos	-0.684267	-0.6828225247311905			
[mm] SIM defocus	0	0.001444936568705701			
[mm] SIM translation stage pos	-190.132523	-190.1425803651734			
[mm] SIM translation stage offset	0	0.01005778216563158			
[s] Observation start time (MET)	109413783.184000	109413069.19578			
Observation start date	2001-06-20T08:41:59	2001-06-20T08:31:09			
[s] Observation end time (MET)	109420796.184000	109421110.3211			
Observation end date	2001-06-20T10:38:52	2001-06-20T10:45:10			
Read mode	TIMED	TIMED			

2.3 Aspect



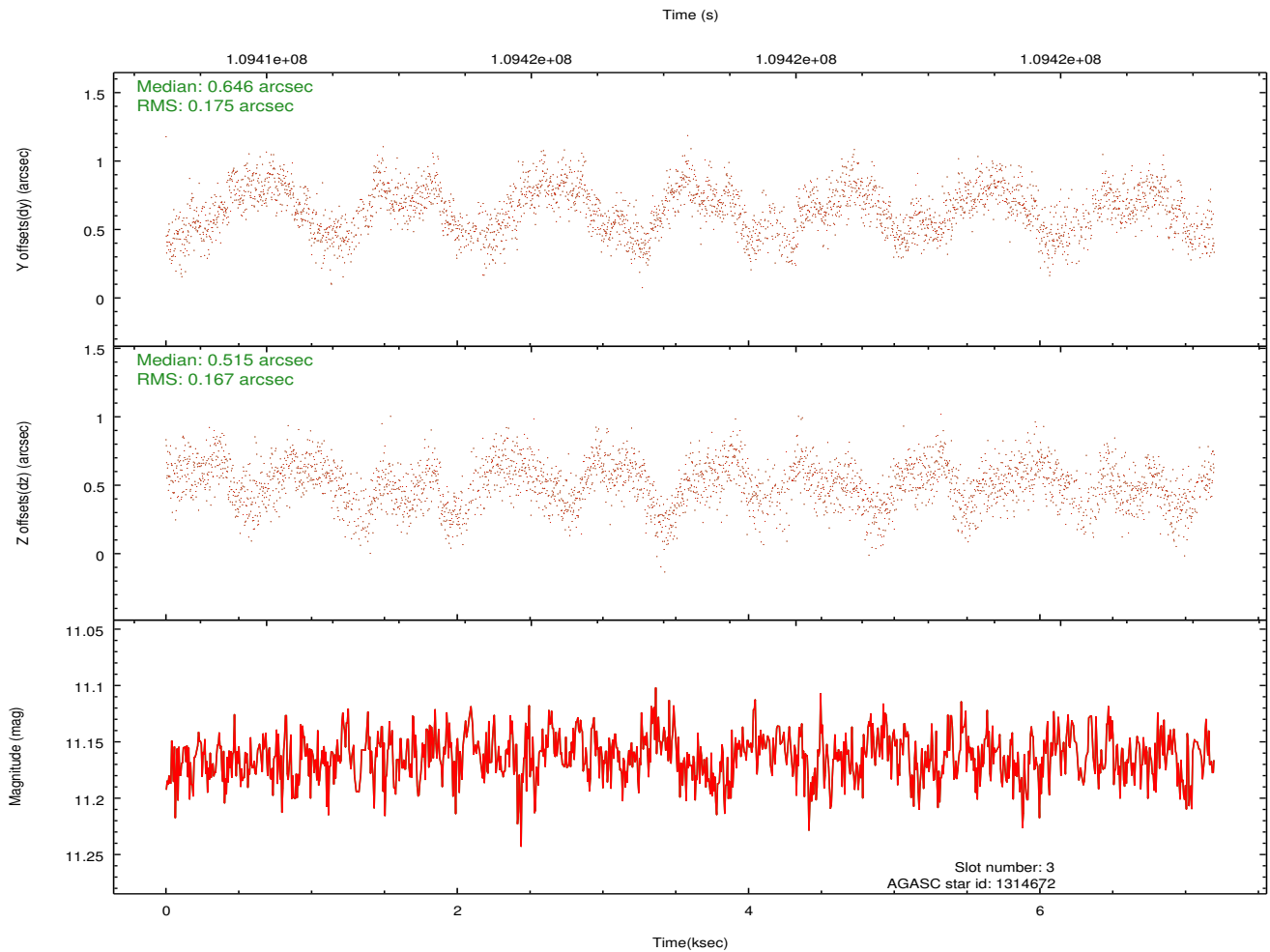
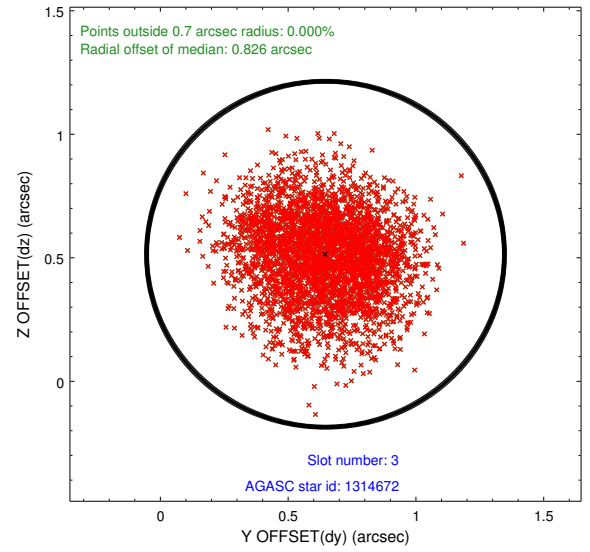
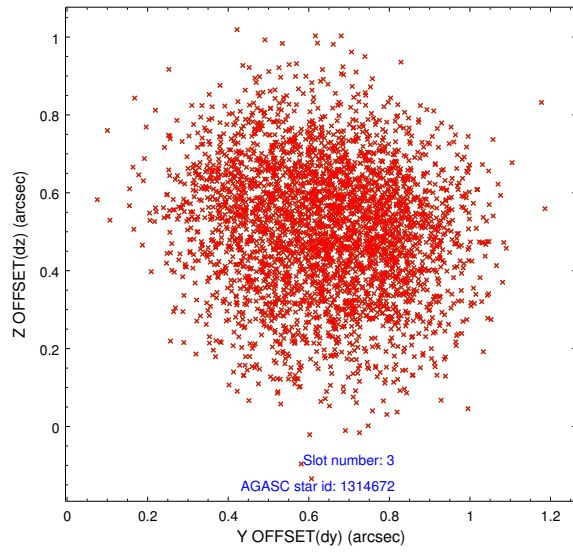


Slot Statistics

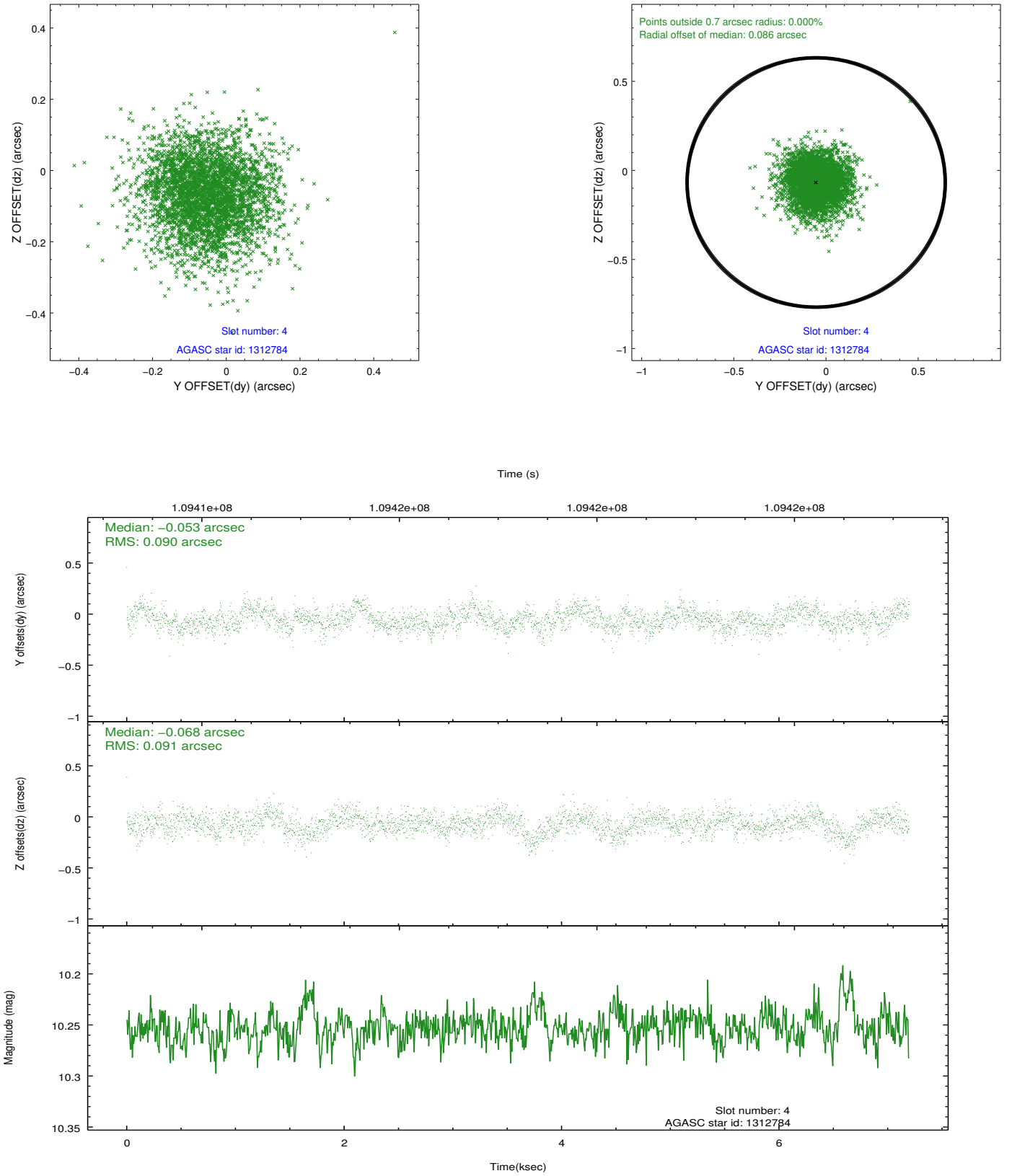
slot	status	id	mag	n_pts	med_dy	med_dz	dr1	dr2	ra	dec	mean_y	mean_z
0	FID	ACIS-S-2	7.12	1755	-0.022	0.005	0.007	0.012	0.000000	0.000000	-754.27	-1728.03
1	FID	ACIS-S-4	7.20	1755	-0.059	0.010	0.006	0.010	0.000000	0.000000	2158.61	179.65
2	FID	ACIS-S-5	7.24	1755	0.050	-0.005	0.007	0.011	0.000000	0.000000	-1806.01	174.20
3	BAD	1314672	11.16	3368	0.646	0.515	0.261	0.406	8.246998	0.403954	-862.18	-999.30
4	GUIDE	1312784	10.25	3508	-0.053	-0.068	0.136	0.221	8.129184	0.713563	324.16	-879.19
5	GUIDE	1311056	10.08	3510	-0.201	0.042	0.126	0.202	8.340631	0.852502	609.87	-1743.85
6	GUIDE	1318440	9.02	3510	-0.360	0.025	0.098	0.155	8.050628	1.188134	2047.61	-1049.65
7	GUIDE	400752	10.21	3504	-0.014	-0.483	0.149	0.241	7.349162	0.104626	-1063.06	2401.25

2.4 Star Slots

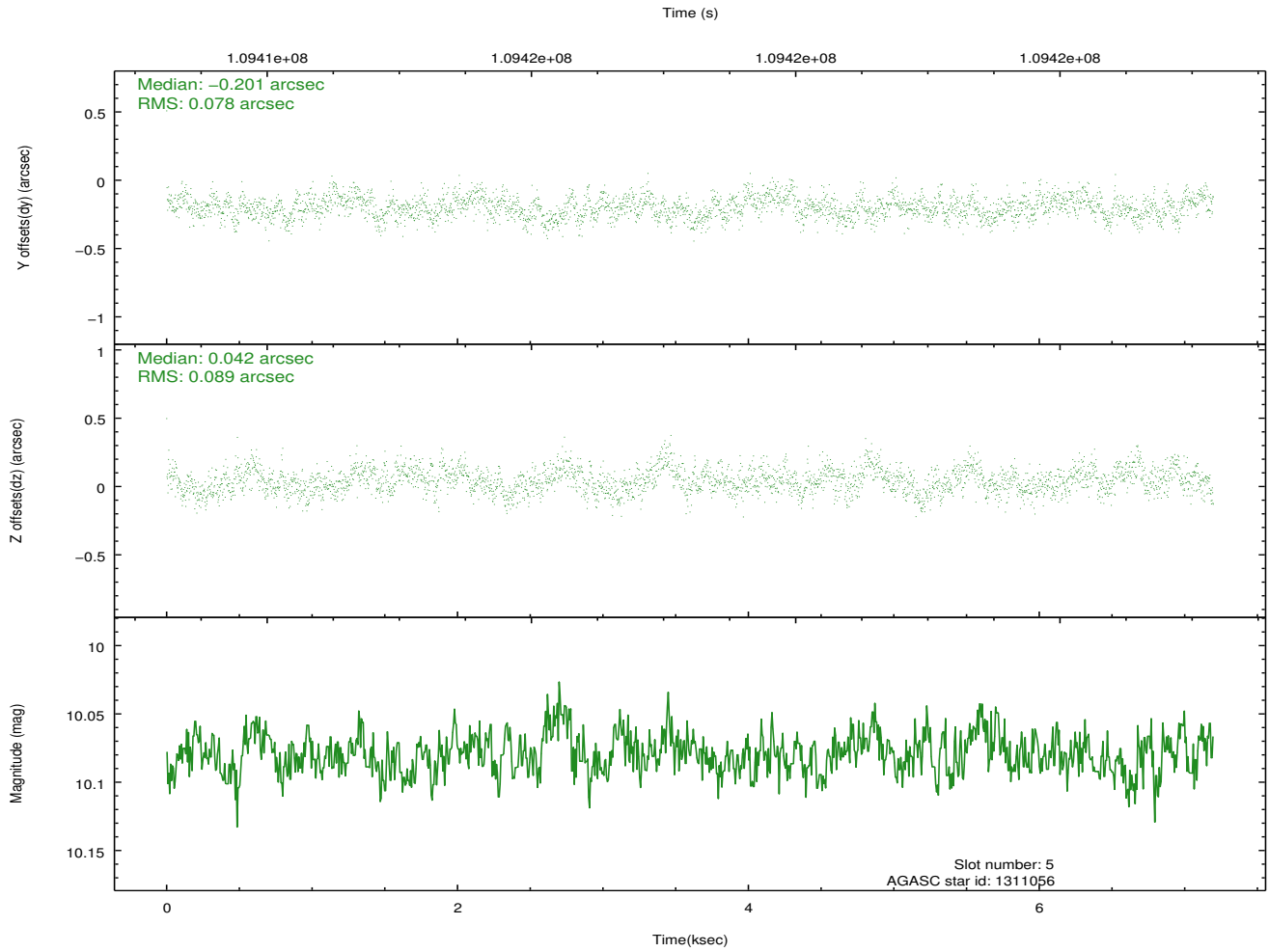
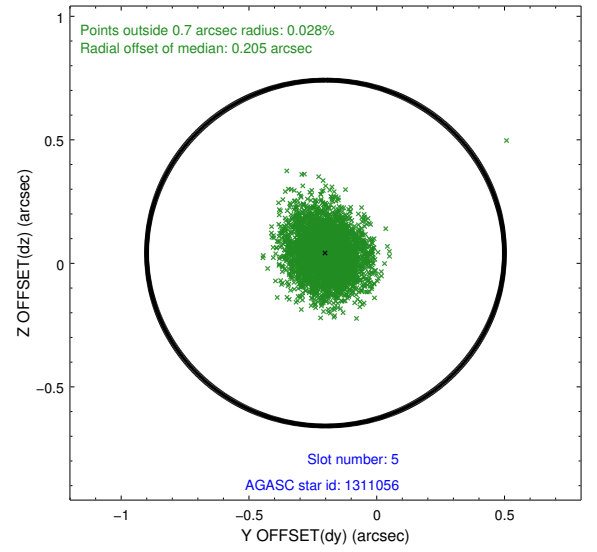
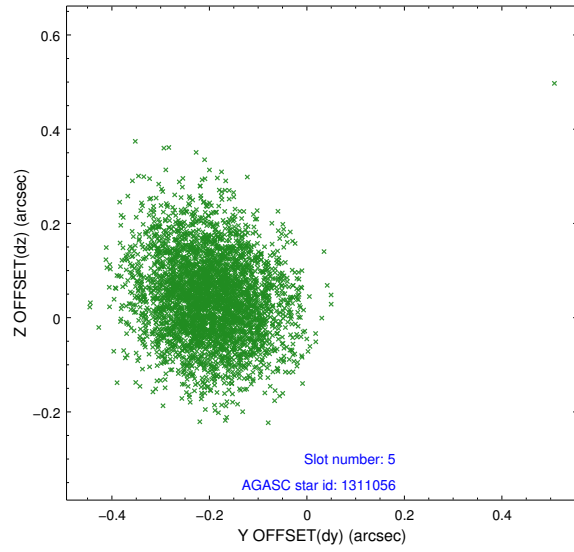
2.4.1 Slot 3



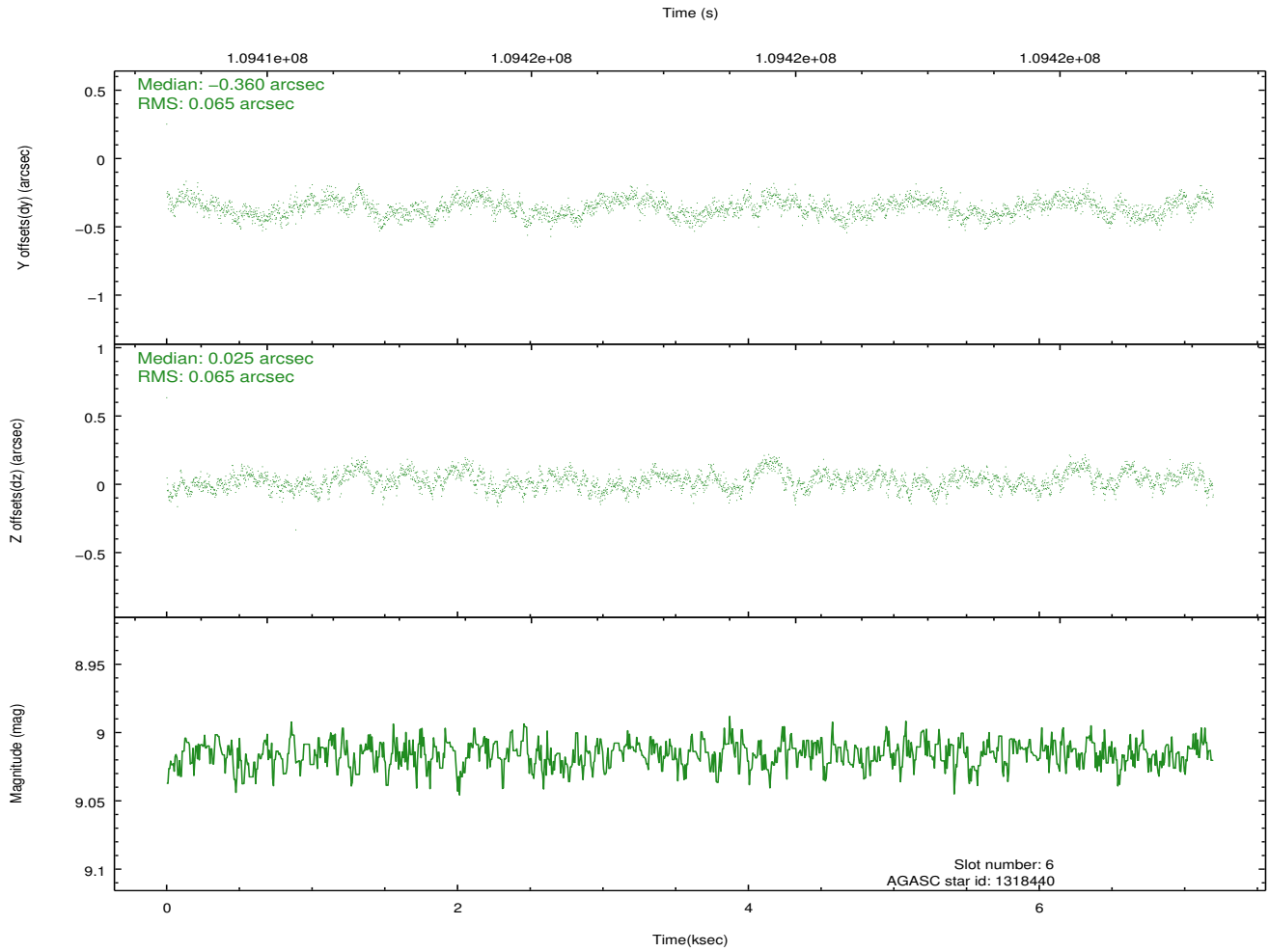
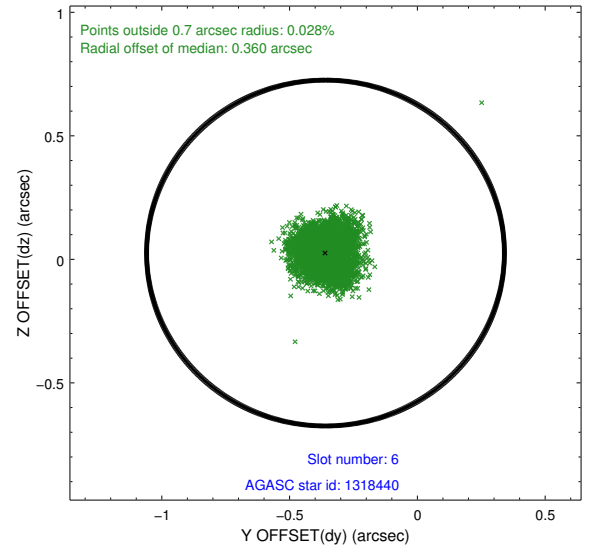
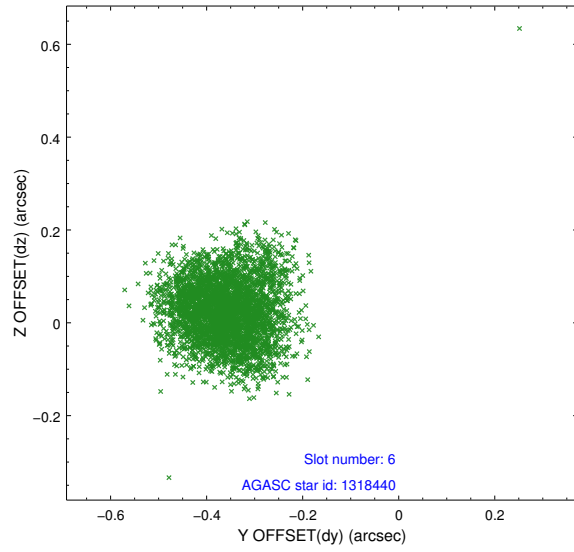
2.4.2 Slot 4



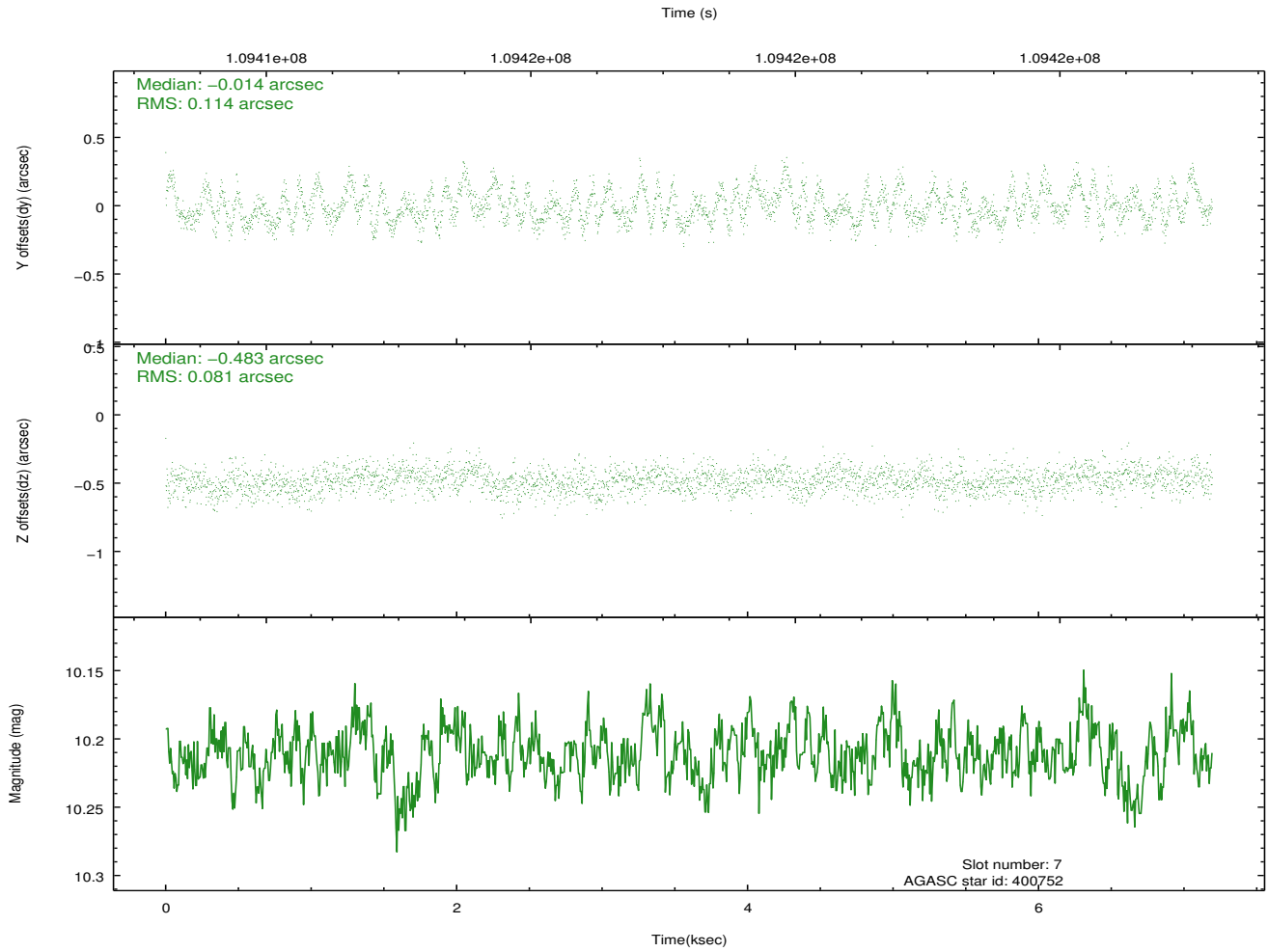
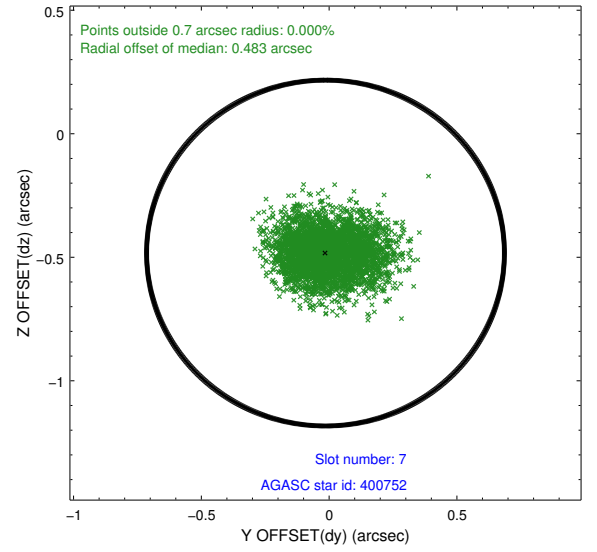
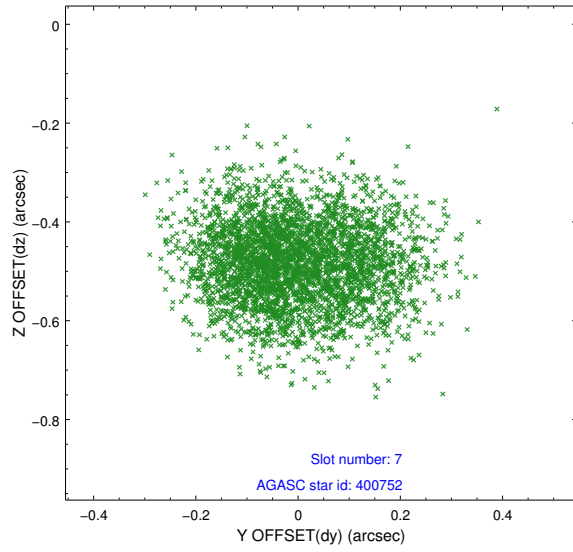
2.4.3 Slot 5



2.4.4 Slot 6

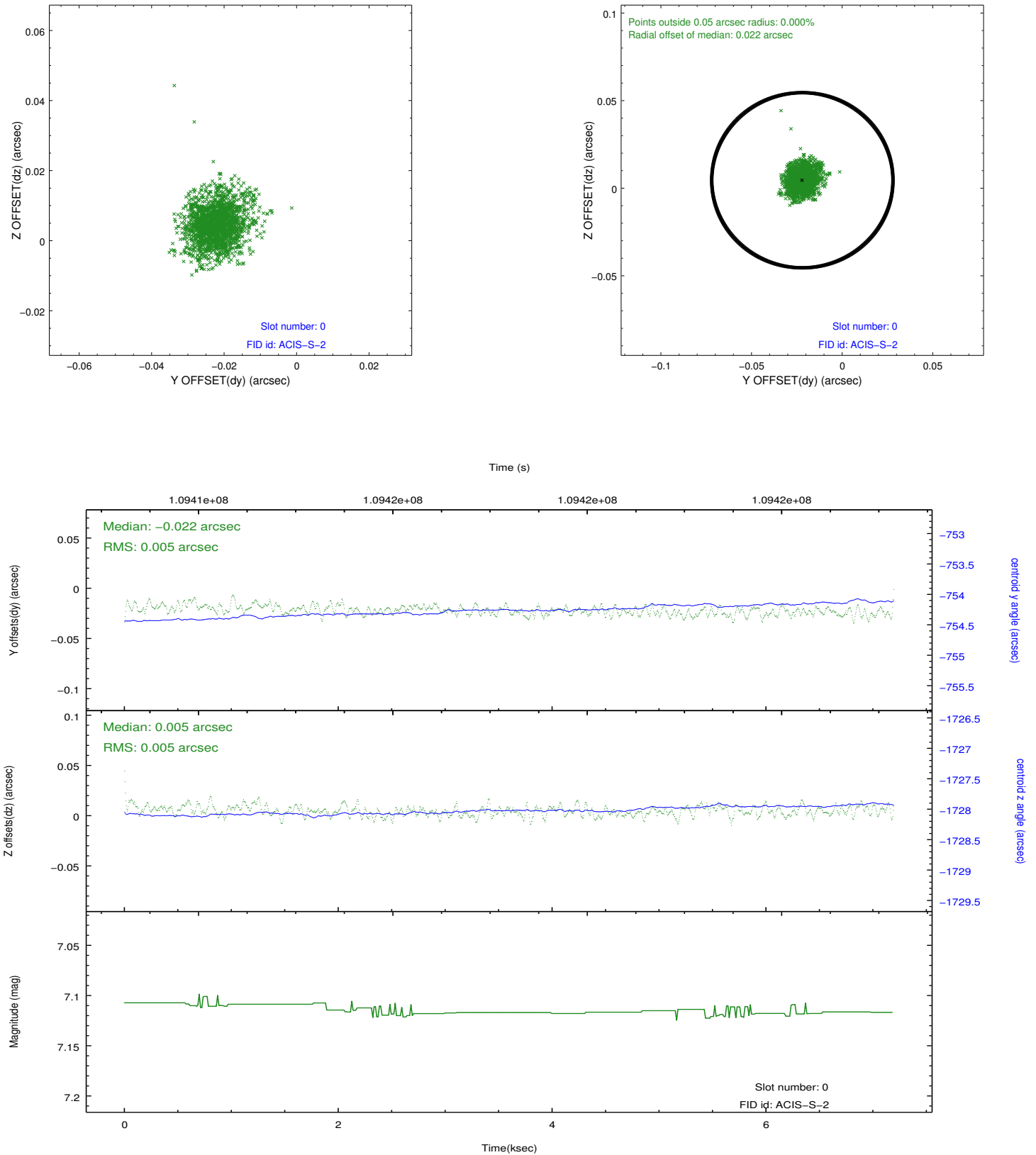


2.4.5 Slot 7

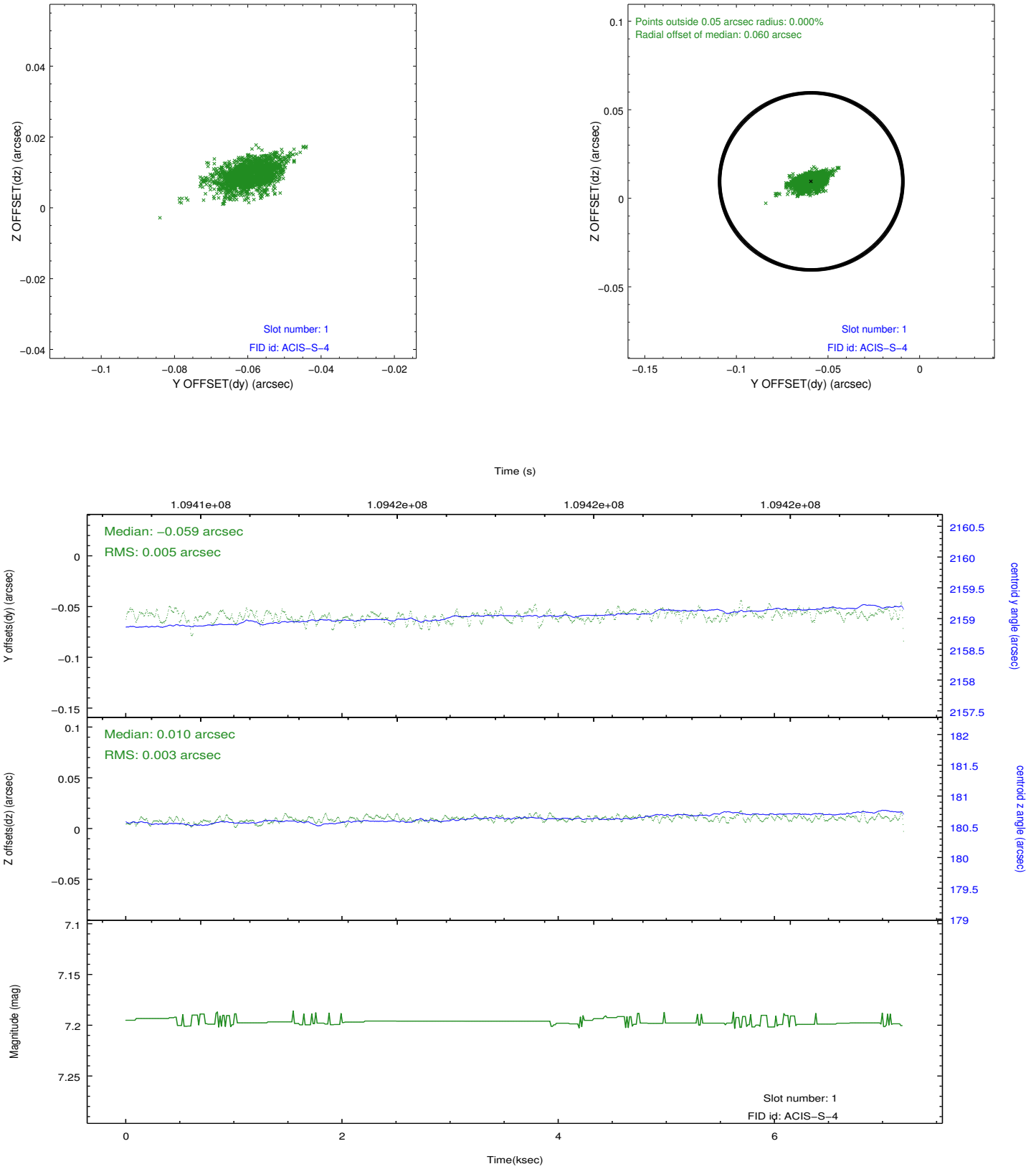


2.5 FID Slots

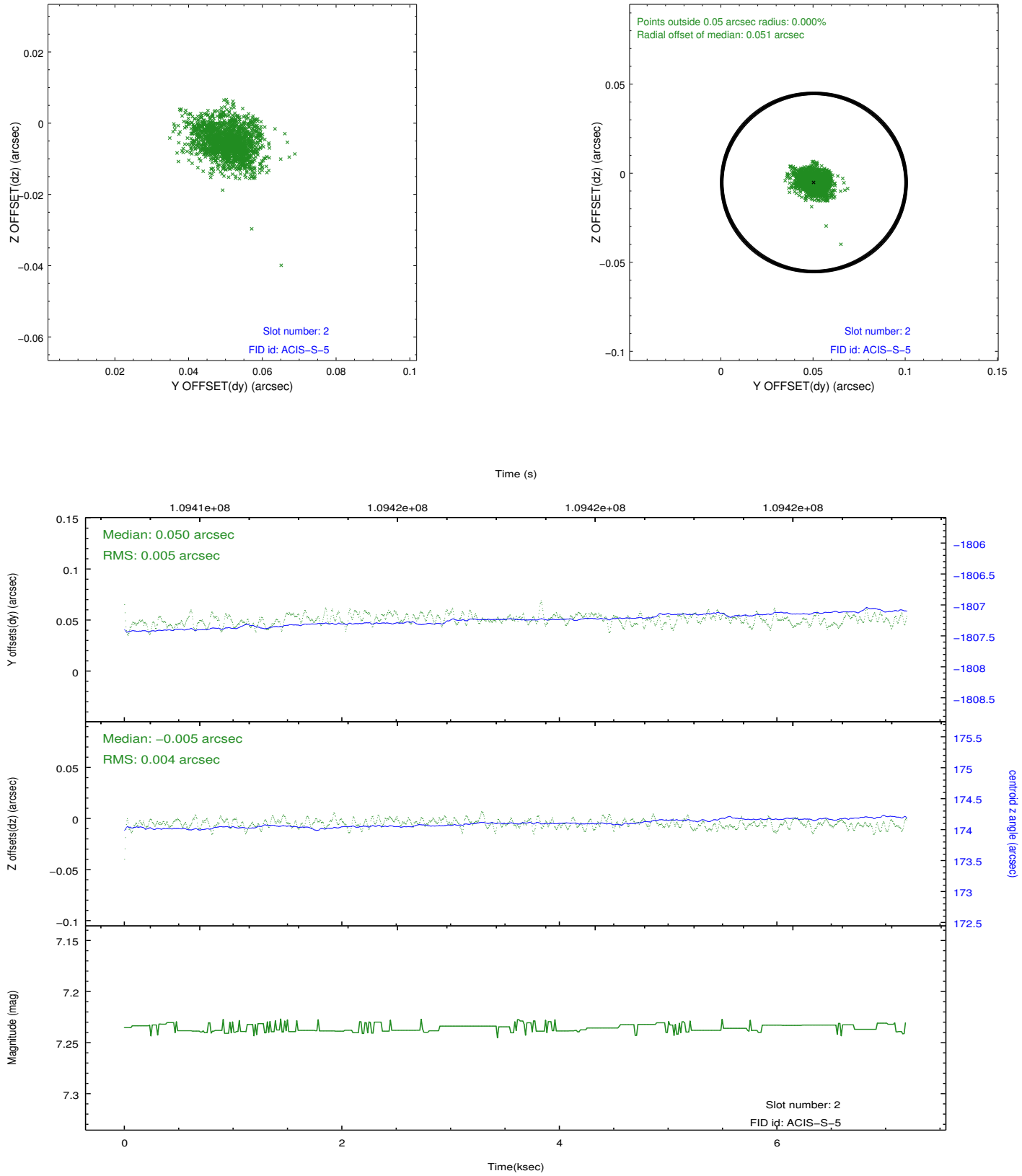
2.5.1 Slot 0



2.5.2 Slot 1



2.5.3 Slot 2



A Summary

A.1 Status

V&V Scientist	Jen Lauer
V&V Date (YYYY-MM-DD)	2012.09.21
V&V Edition	1
V&V Disposition and Status	OK
V&V Charge Time	6.771

A.2 Comments