

V&V Reference Report

L2 ASCDS Version : 7.6.9

Observation 2101 - L2 Version 001
Chandra X-Ray Center

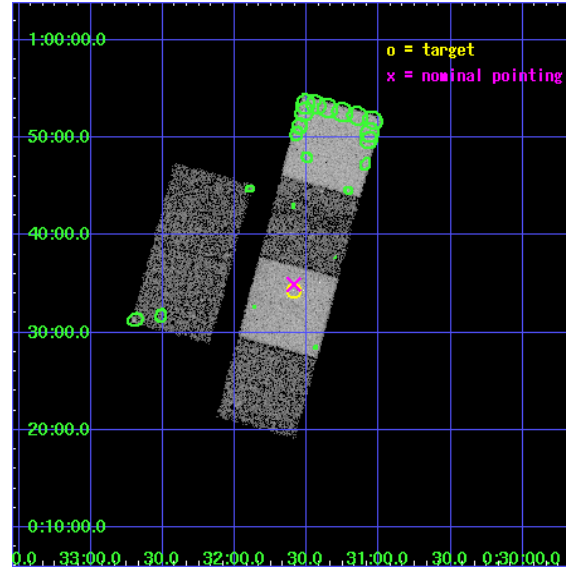
L2 Processing Date : Dec 8 2006

Contents

1	Front	2
2	OBI	3
2.1	OBI	3
2.1.1	Images	3
2.1.2	Bias	3
2.1.3	Parameters	4
2.1.4	Events	4
2.2	Compared Parameters	5
2.3	Aspect	6
2.4	Star Slots	9
2.4.1	Slot 3	9
2.4.2	Slot 4	10
2.4.3	Slot 5	11
2.4.4	Slot 6	12
2.4.5	Slot 7	13
2.5	FID Slots	14
2.5.1	Slot 0	14
2.5.2	Slot 1	15
2.5.3	Slot 2	16
3	Point Sources	17
A	Summary	18
A.1	Status	18
A.2	Comments	18

1 Front

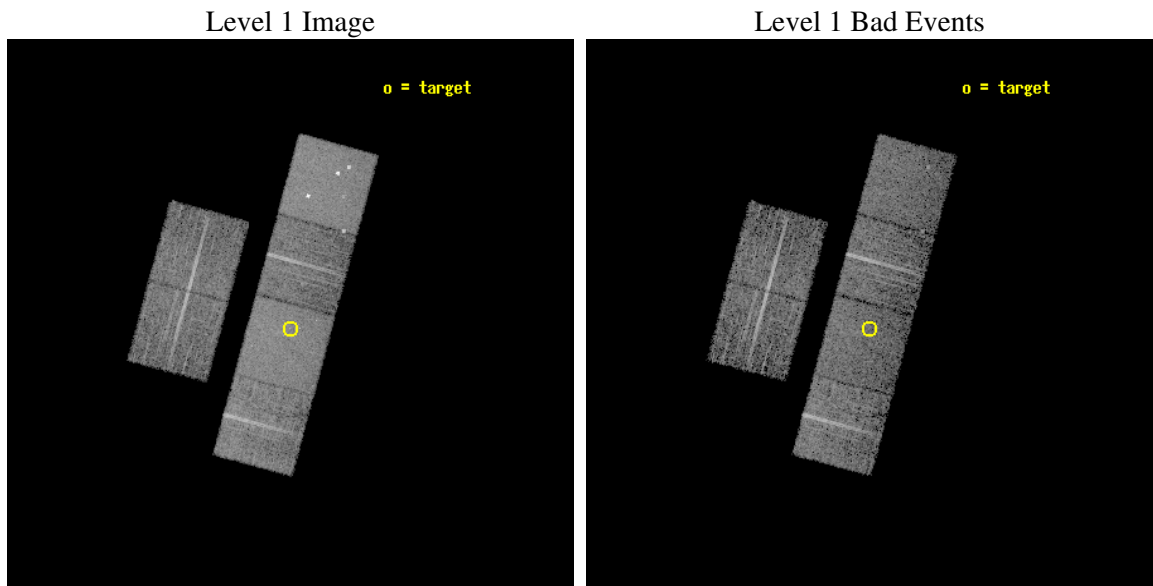
seq_num	700291
obs_id	2101
title	PUBLIC OBSERVATIONS OF A WELL-DEFINED SAMPLE OF BAL QSOS FROM THE LARGE BRIGHT QUASAR SURVEY: REMOVING THE BARRIERS
observer	Prof. William Brandt
object	LBQS 0029+0017
dtcycle	0
cycle	P
ra_targ	7.898333
dec_targ	0.572389
ra_nom	7.8974913047156
dec_nom	0.5820710871654
roll_nom	105.21212290571
revision	2
ontime	6768.0000063032
livetime	6682.299515023
ontime2	6768.0000063032
ontime3	6768.0000063032
ontime5	6768.0000063032
ontime6	6768.0000063032
ontime7	6768.0000063032
ontime8	6764.7591856718
l2events	82784



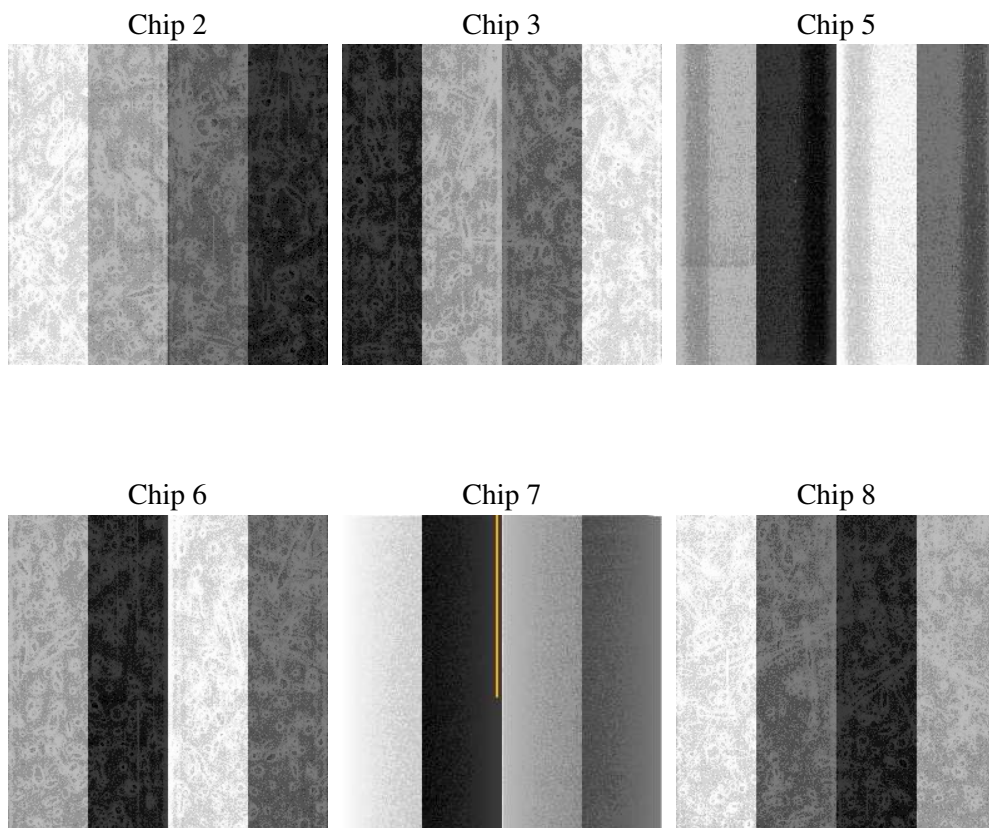
2 OBI

2.1 OBI

2.1.1 Images



2.1.2 Bias



2.1.3 Parameters

obi_num	0
ascdsver	7.6.9
caldsver	3.2.4
date	2006-12-08T09:26:45
revision	2

sched_exp_time	7012.570000
ontime	6773.6826239526
ontime2	6773.6826239526
ontime3	6773.6826239526
ontime5	6773.6826239526
ontime6	6773.6826239526
ontime7	6773.6826239526
ontime8	6770.4416936338
l1events	331326

2.1.4 Events

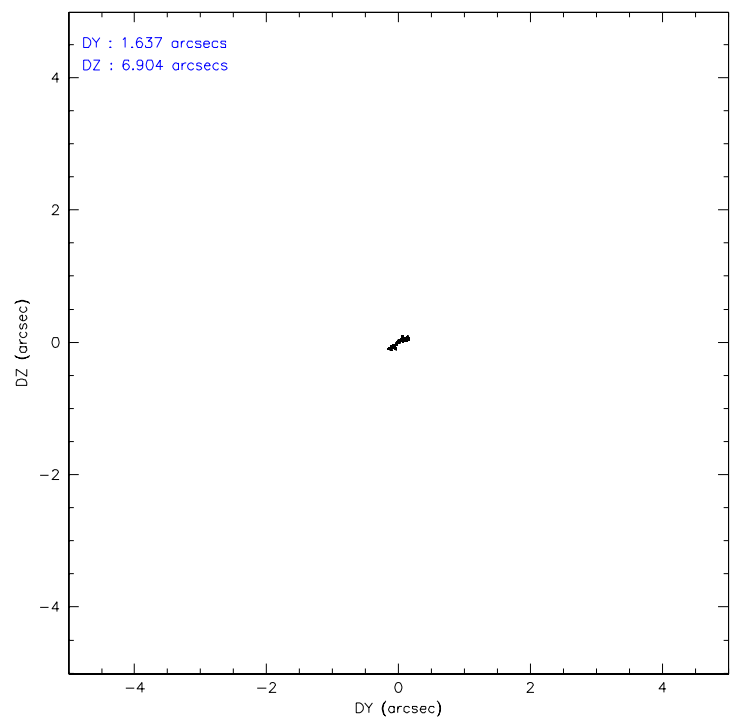
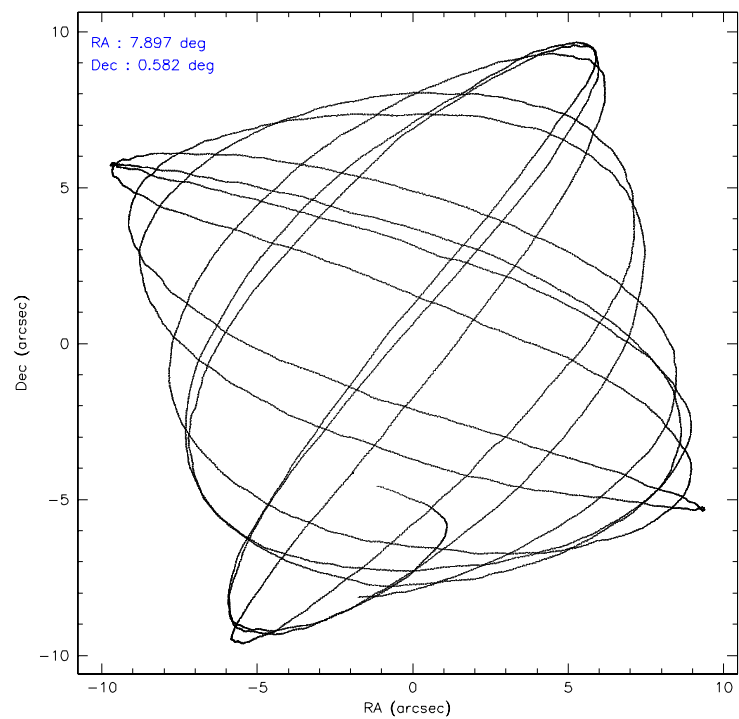
	ccd 2	ccd 3	ccd 5	ccd 6	ccd 7	ccd 8
level 1 events	44905	44571	72301	46631	63869	59049
rejected events	38728	38287	34871	40181	35149	46675
rejected %	86%	85%	48%	86%	55%	79%

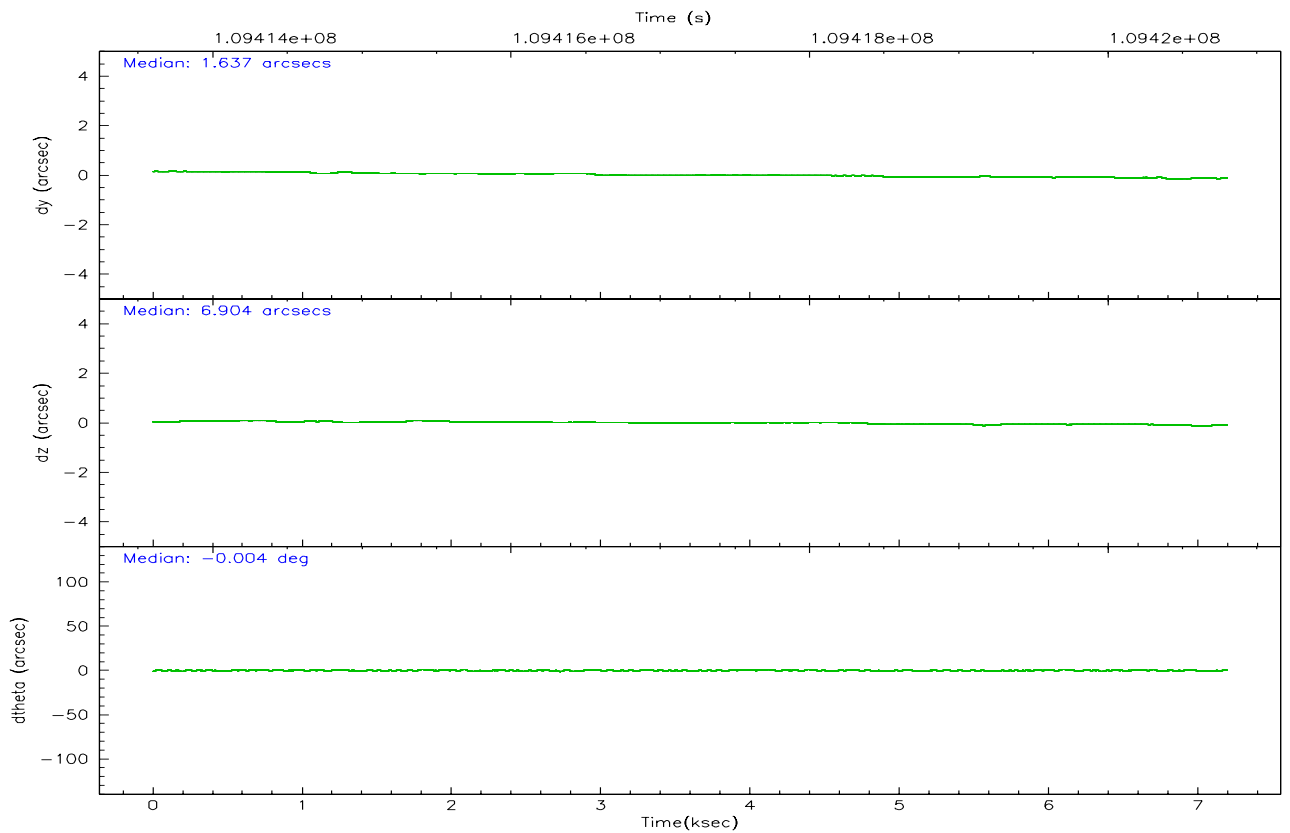
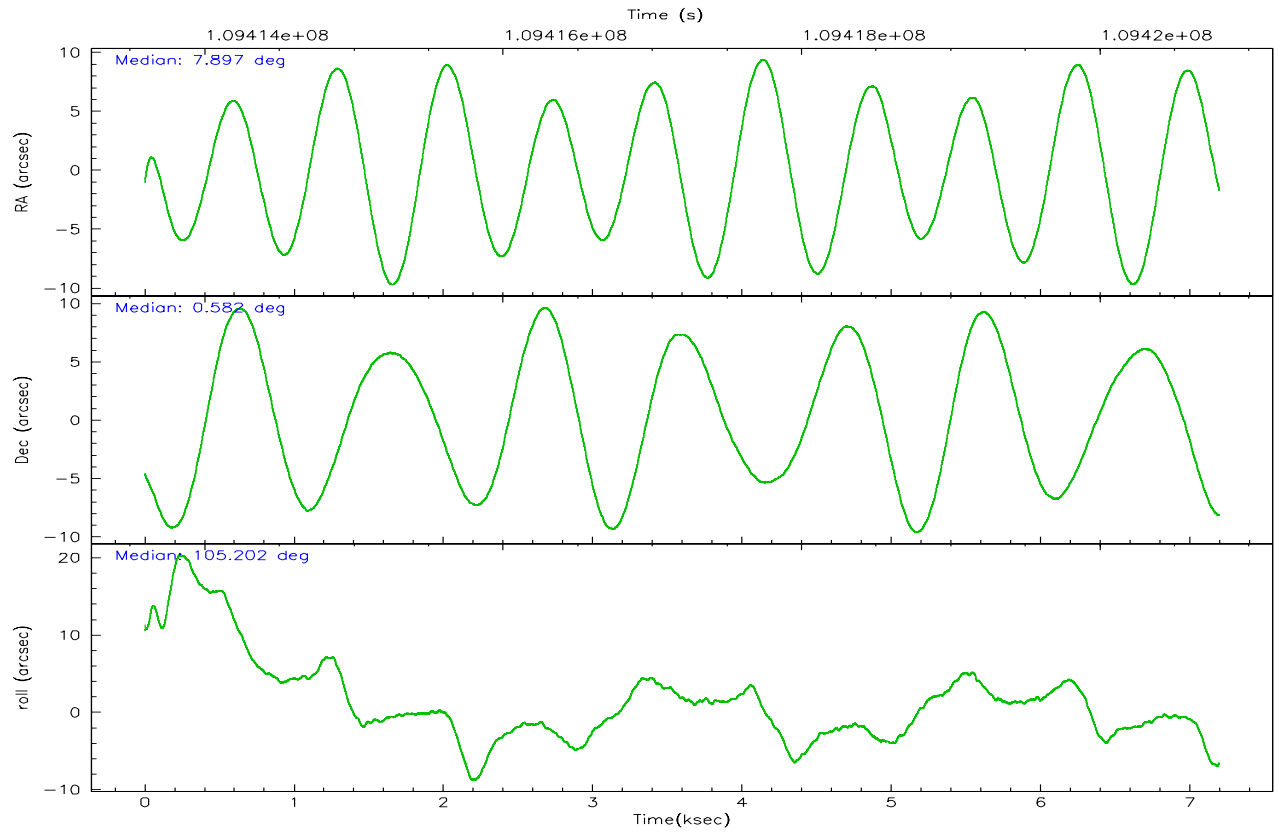
	ccd 2	ccd 3	ccd 5	ccd 6	ccd 7	ccd 8
grade 0 events	3086	3138	6859	3194	2253	4573
	6%	7%	9%	6%	3%	7%
grade 1 events	31	31	211	20	35	41
	0%	0%	0%	0%	0%	0%
grade 2 events	1203	1159	10451	1209	6776	2444
	2%	2%	14%	2%	10%	4%
grade 3 events	504	525	957	534	1558	1222
	1%	1%	1%	1%	2%	2%
grade 4 events	476	532	981	516	1616	1121
	1%	1%	1%	1%	2%	1%
grade 5 events	1455	1639	3102	1796	3890	2253
	3%	3%	4%	3%	6%	3%
grade 6 events	912	934	18213	1003	16546	3016
	2%	2%	25%	2%	25%	5%
grade 7 events	37238	36613	31527	38359	31195	44379
	82%	82%	43%	82%	48%	75%

2.2 Compared Parameters

Parameter	Planned	Actual	Parameter	Planned	Actual
Instrument	ACIS	ACIS	Obspar format version number	6	6
Detector	ACIS-235678	ACIS-235678	Obspar file type	PREDICTED	ACTUAL
Grating	NONE	NONE	Obspar update status	NONE	UPDATED
Data mode	FAINT	FAINT	Number of optional ACIS chips dropped	0	0
Observation mode	POINTING	POINTING	On-chip summing requested	N	N
Pointing RA	7.917060	7.897491304715595	Subarray requested	NONE	NONE
Pointing Dec	0.563100	0.5820710871653972	Alternating exposures requested	N	N
Pointing Roll	105.055307	105.2121229057124	Primary exposure time	0.000000	3.2
SIM focus pos (mm)	-0.684267	-0.6828225247311905			
SIM defocus (mm)	0	0.001444936568705701			
SIM translation stage pos (mm)	-190.132523	-190.1425803651734			
SIM translation stage offset (mm)	0	0.01005778216563158			
Observation start time	109413783.184000	109413069.19578			
Observation start date	2001-06-20T08:41:59	2001-06-20T08:31:09			
Observation end time	109420796.184000	109421110.3211			
Observation end date	2001-06-20T10:38:52	2001-06-20T10:45:10			
Read mode	TIMED	TIMED			

2.3 Aspect



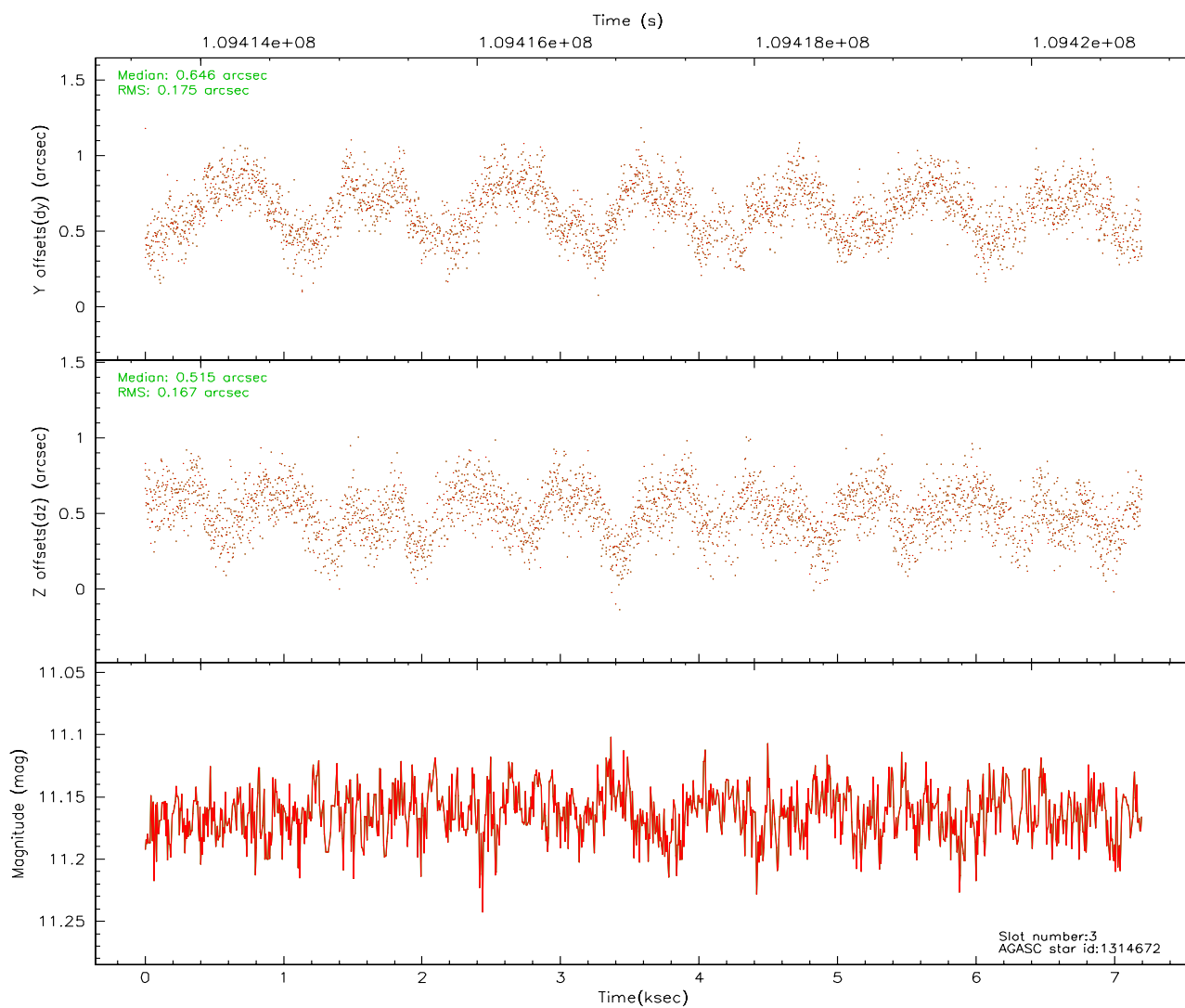
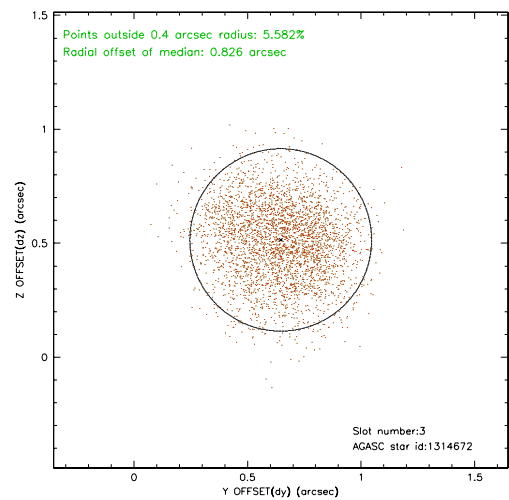
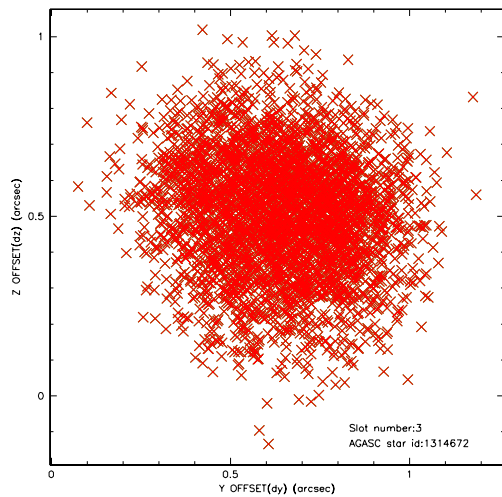


Slot Statistics

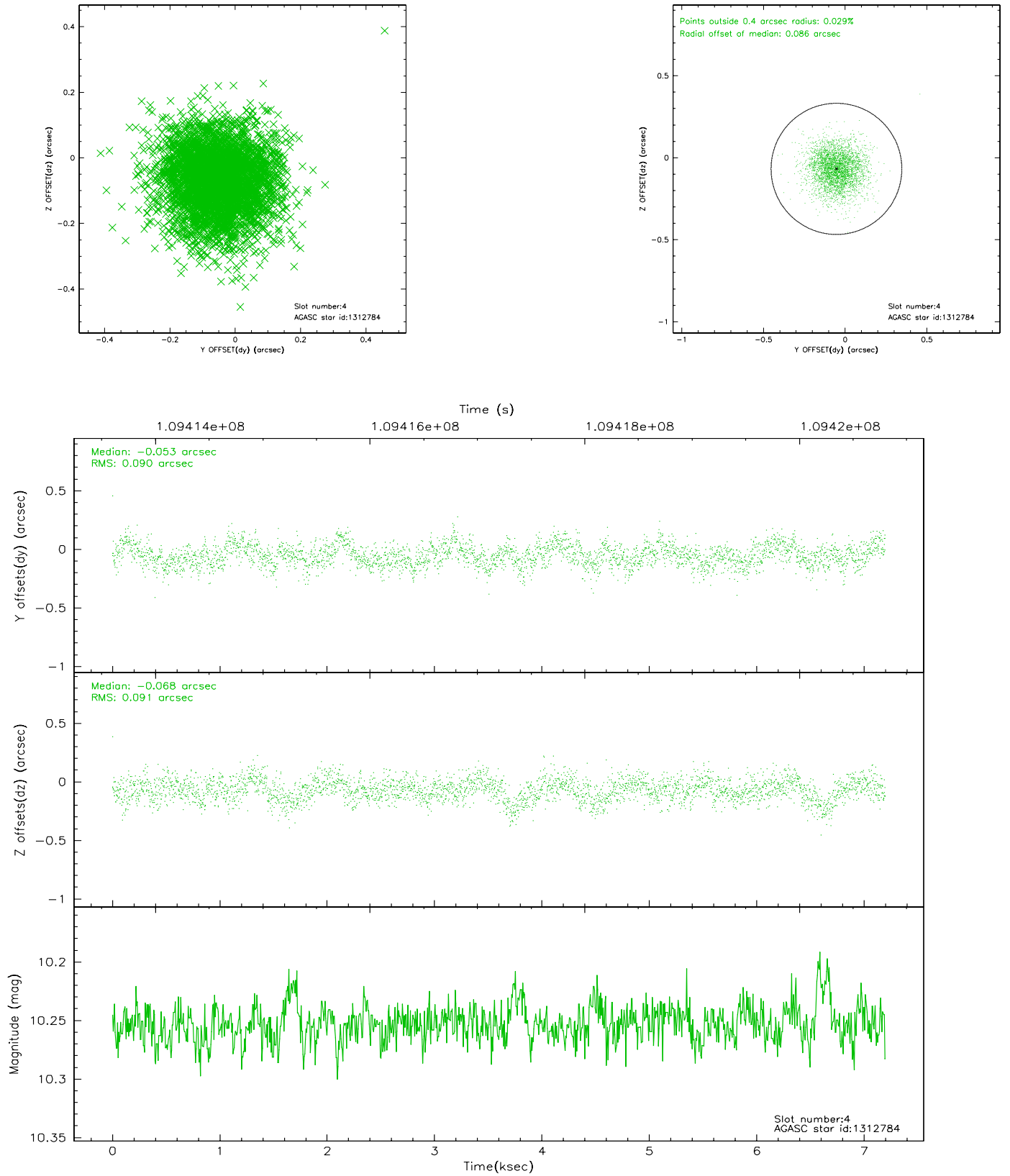
slot	status	id	mag	n_pts	med_dy	med_dz	dr1	dr2	ra	dec	mean_y	mean_z
0	FID	ACIS-S-2	7.12	1755	-0.011	0.028	0.007	0.013	0.000000	0.000000	-754.25	-1727.99
1	FID	ACIS-S-4	7.20	1755	-0.101	-0.002	0.006	0.010	0.000000	0.000000	2158.56	179.65
2	FID	ACIS-S-5	7.24	1755	0.081	-0.017	0.006	0.010	0.000000	0.000000	-1805.98	174.21
3	BAD	1314672	11.16	3368	0.646	0.515	0.261	0.406	8.246998	0.403954	-862.18	-999.30
4	GUIDE	1312784	10.25	3508	-0.053	-0.068	0.136	0.221	8.129184	0.713563	324.16	-879.19
5	GUIDE	1311056	10.08	3510	-0.201	0.042	0.126	0.202	8.340631	0.852502	609.87	-1743.85
6	GUIDE	1318440	9.02	3510	-0.360	0.025	0.098	0.155	8.050628	1.188134	2047.61	-1049.65
7	GUIDE	400752	10.21	3504	-0.014	-0.483	0.149	0.241	7.349162	0.104626	-1063.06	2401.25

2.4 Star Slots

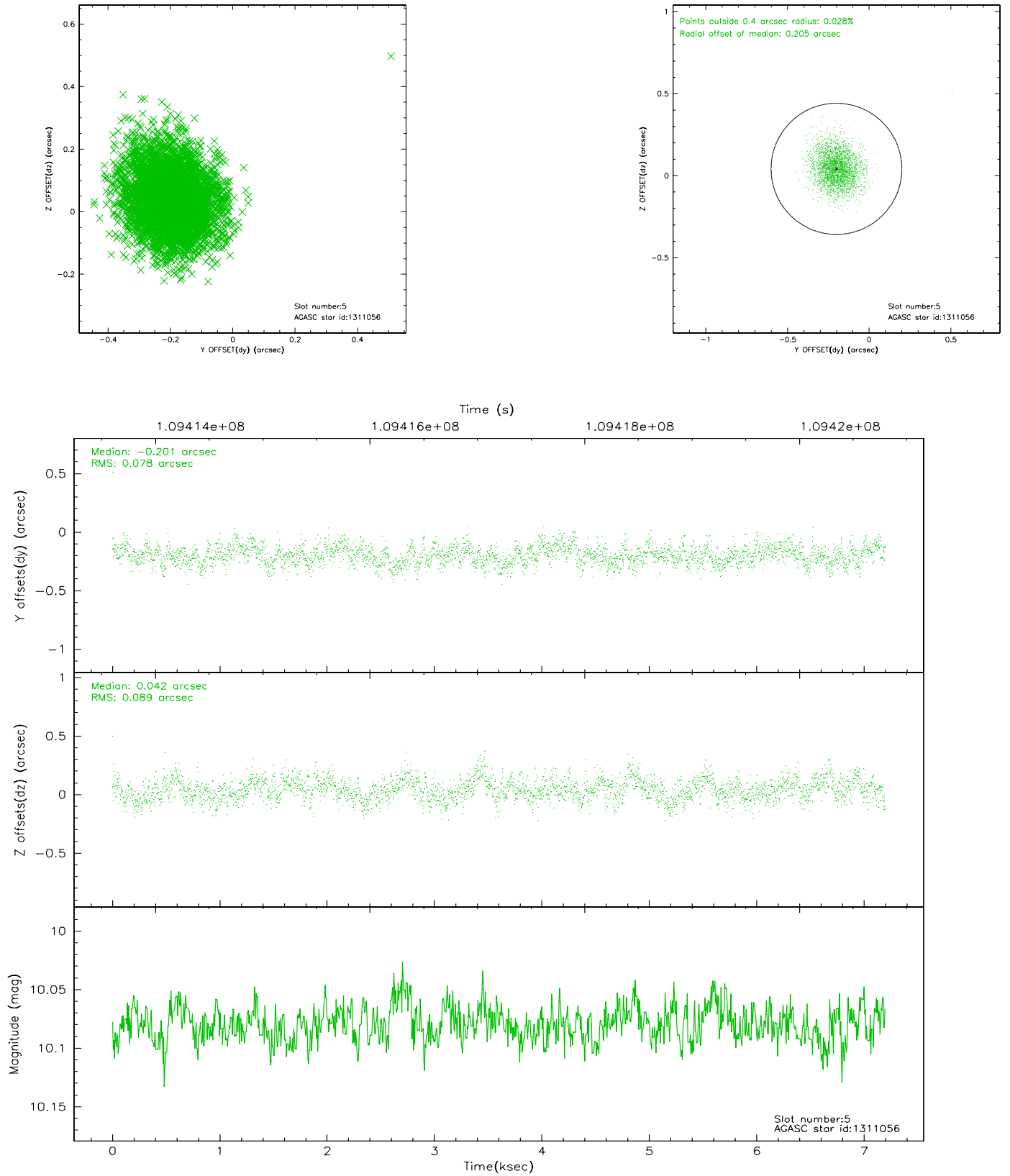
2.4.1 Slot 3



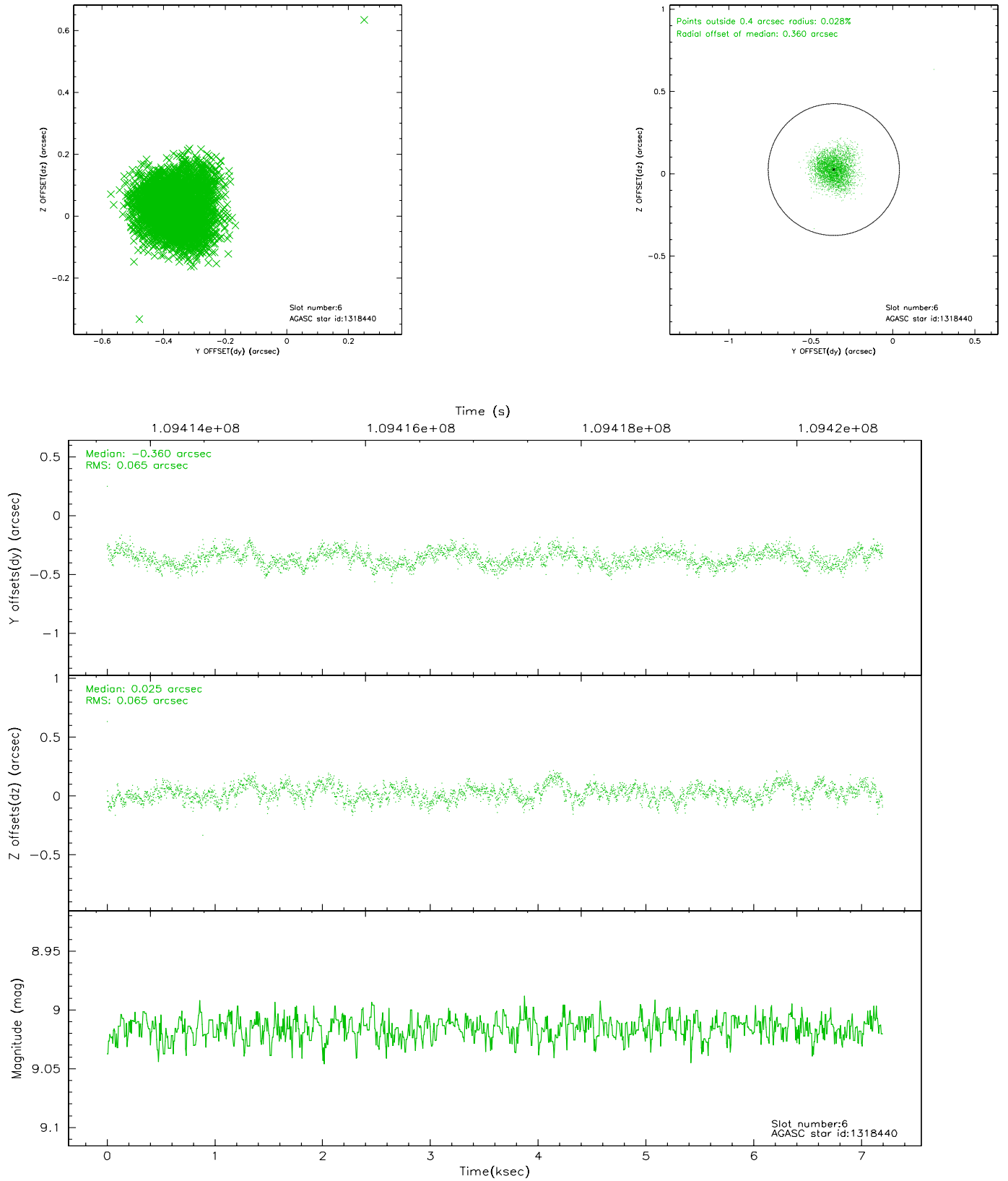
2.4.2 Slot 4



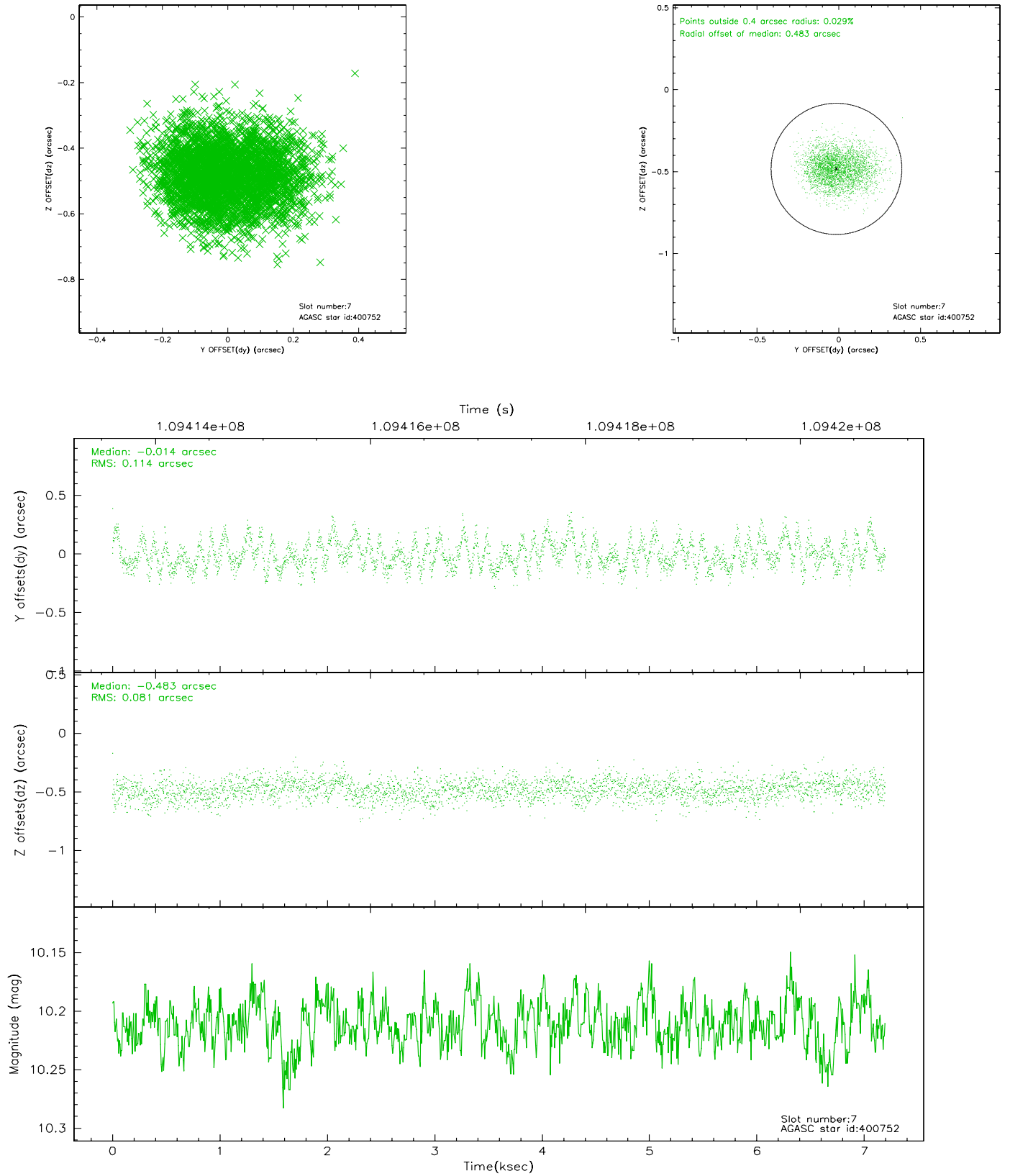
2.4.3 Slot 5



2.4.4 Slot 6

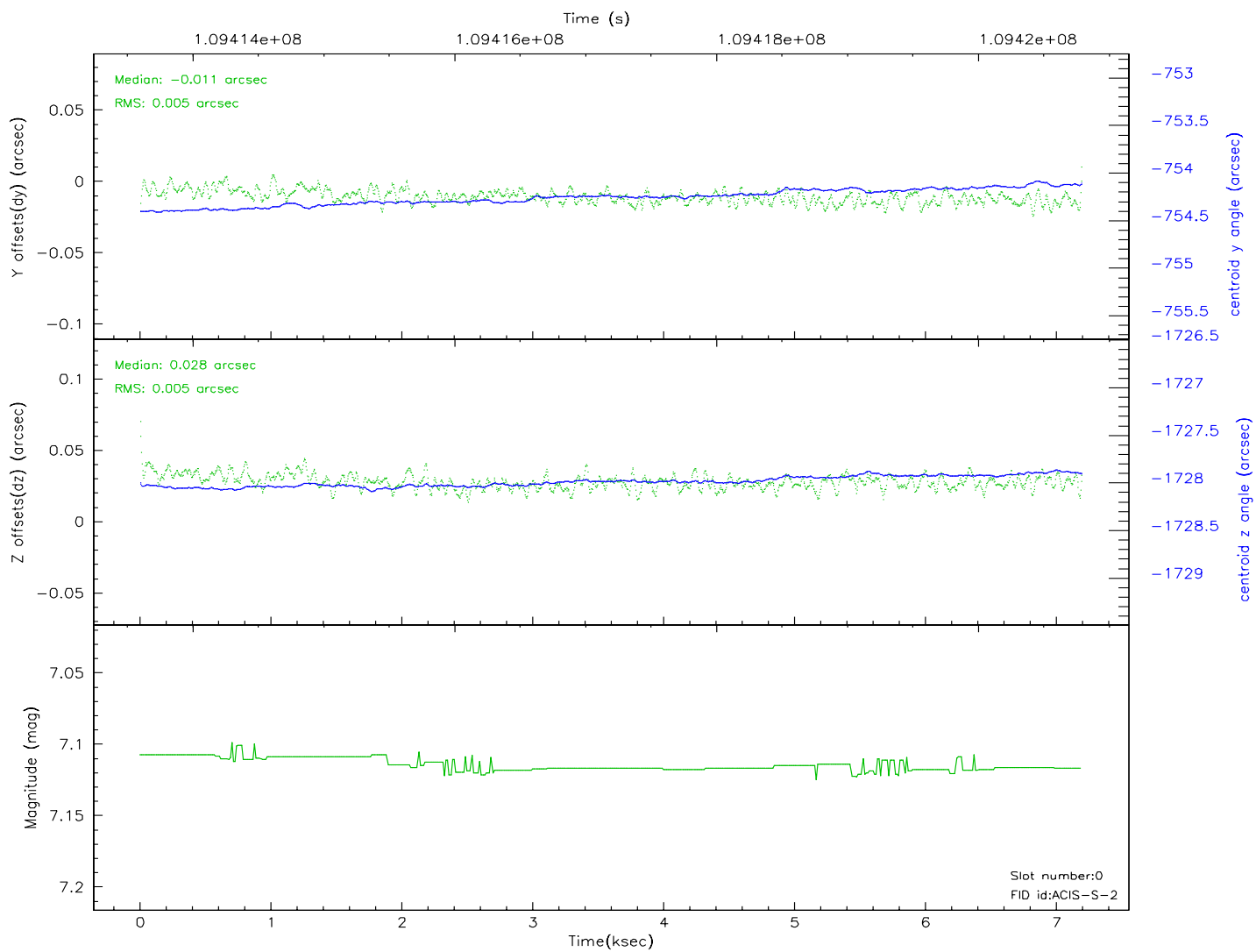
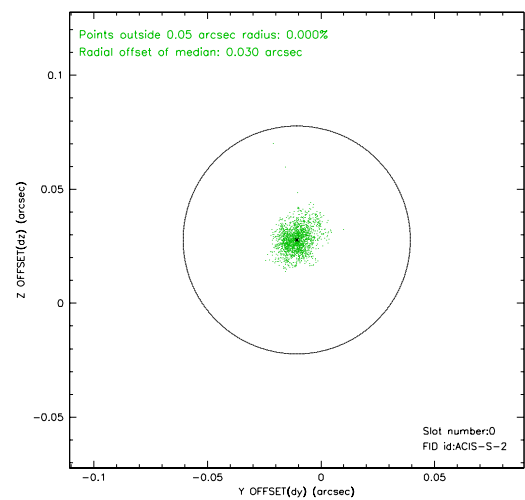
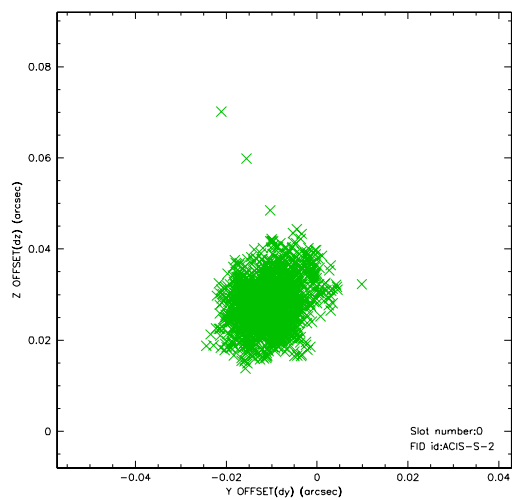


2.4.5 Slot 7

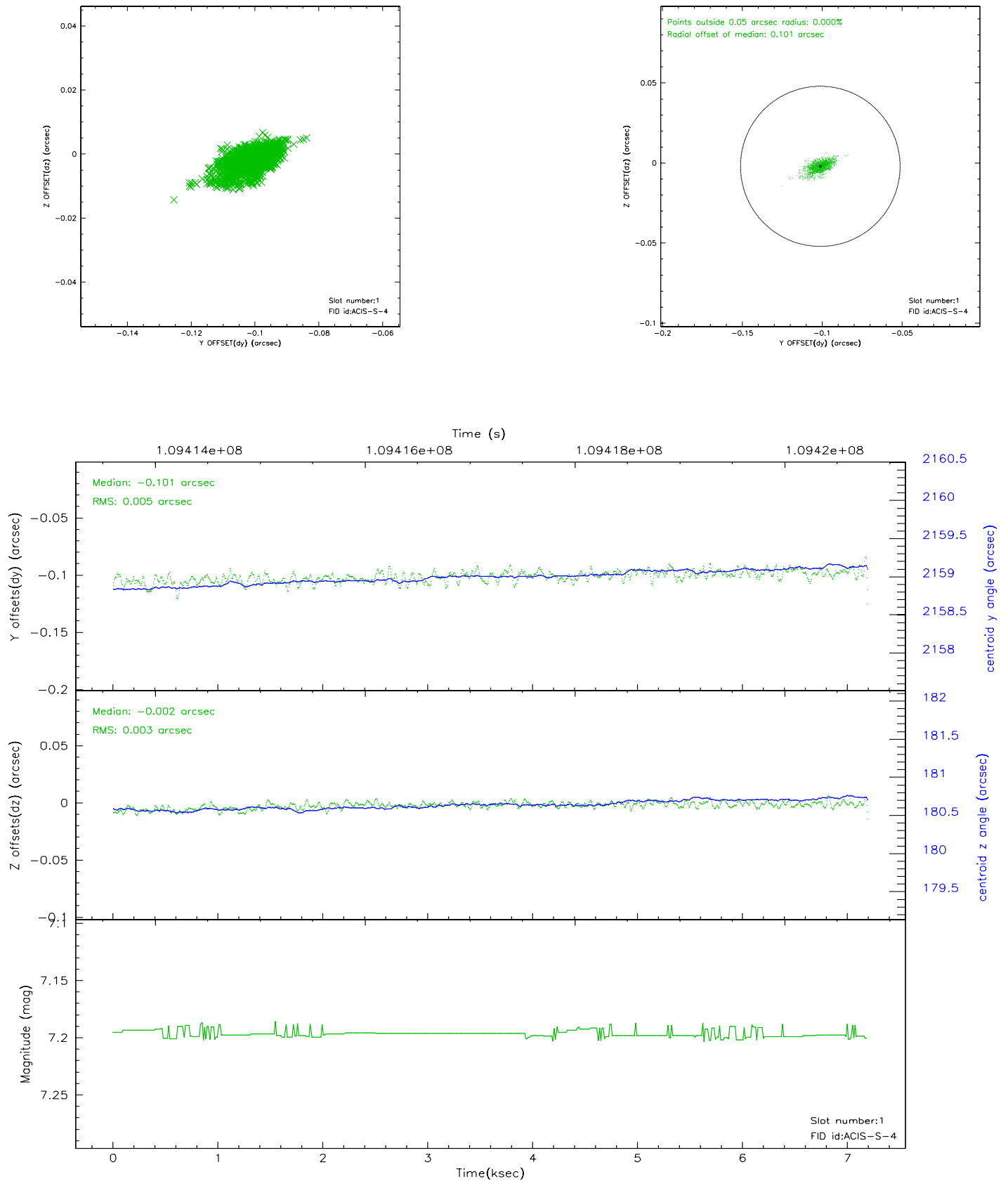


2.5 FID Slots

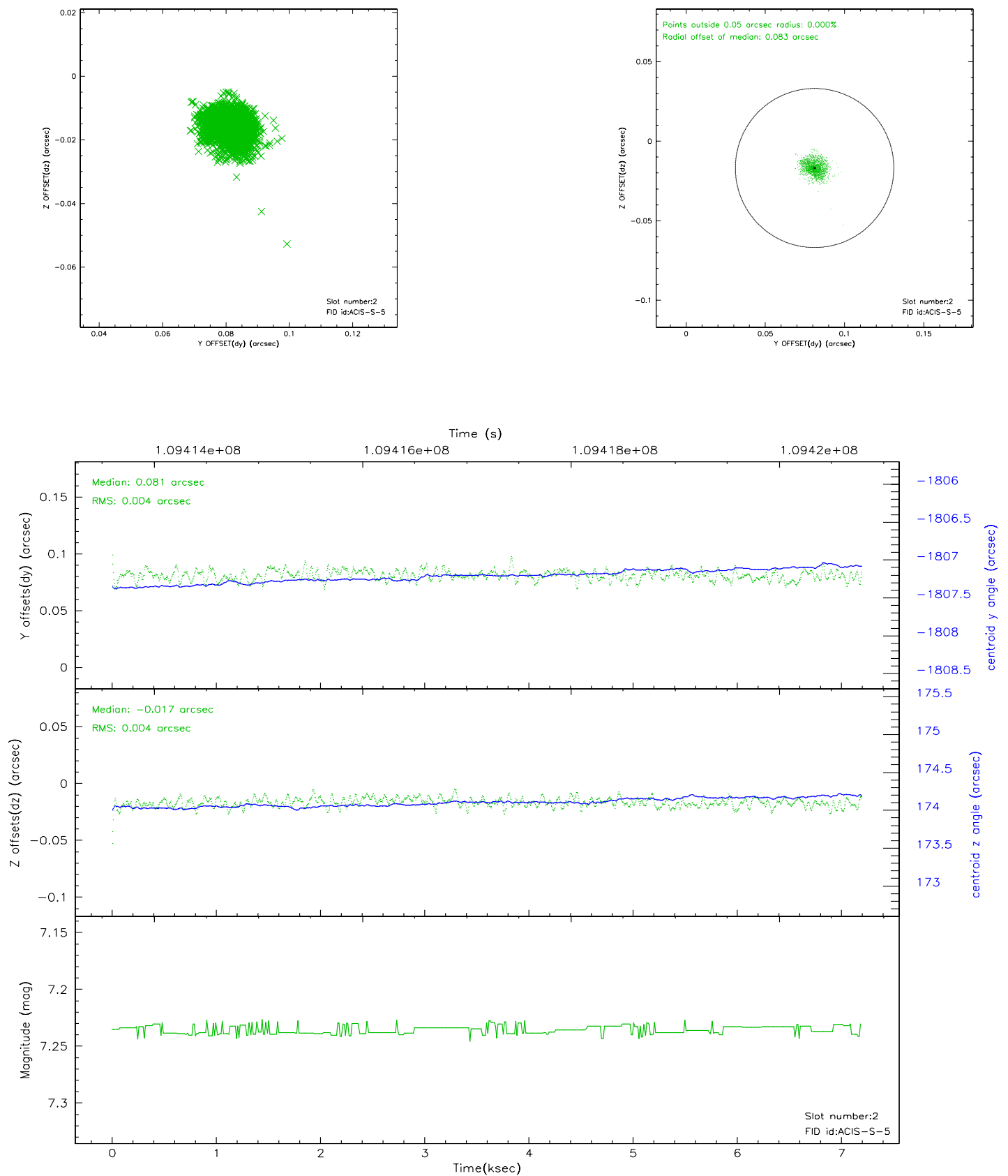
2.5.1 Slot 0



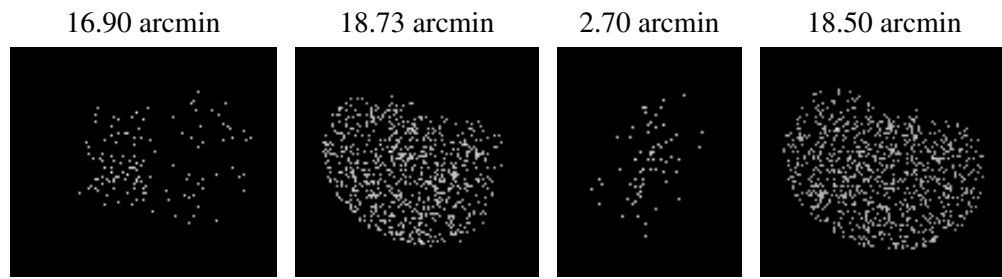
2.5.2 Slot 1



2.5.3 Slot 2



3 Point Sources



A Summary

A.1 Status

V&V Scientist	Beth Sundheim
V&V Date (YYYY-MM-DD)	2006.12.08
V&V Edition	1
V&V Disposition and Status	OK
V&V Charge Time	6.771

A.2 Comments

The guide star in slot 3 was removed from the aspect solution due to poor data quality. The aspect solution is not expected to be degraded by removing one guide star or fid light from the solution.