

V&V Reference Report

L2 ASCDS Version : 7.6.9

Observation 2085 - L2 Version 001
Chandra X-Ray Center

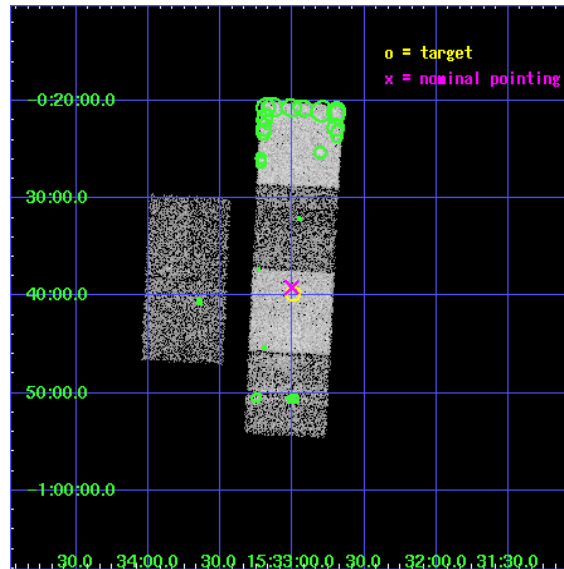
L2 Processing Date : Nov 15 2006

Contents

1	Front	2
2	OBI	3
2.1	OBI	3
2.1.1	Images	3
2.1.2	Bias	3
2.1.3	Parameters	4
2.1.4	Events	4
2.2	Compared Parameters	5
2.3	Aspect	6
2.4	Star Slots	9
2.4.1	Slot 3	9
2.4.2	Slot 4	10
2.4.3	Slot 5	11
2.4.4	Slot 6	12
2.4.5	Slot 7	13
2.5	FID Slots	14
2.5.1	Slot 0	14
2.5.2	Slot 1	15
2.5.3	Slot 2	16
3	Point Sources	17
A	Summary	18
A.1	Status	18
A.2	Comments	18

1 Front

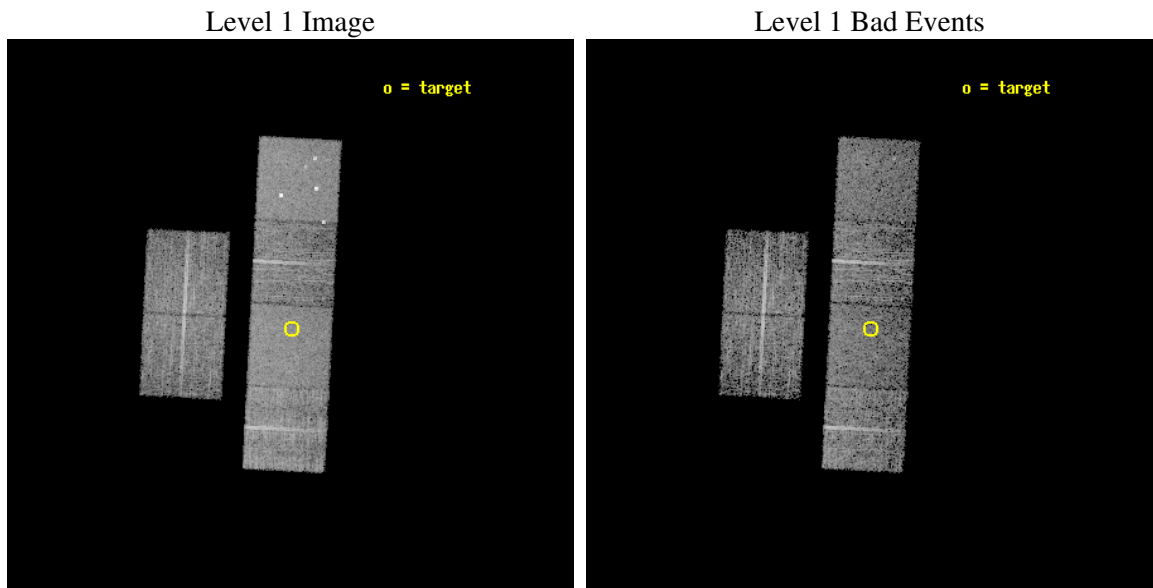
seq_num	700275
obs_id	2085
title	AN X-RAY STUDY OF THE MOST DISTANT QUASARS FROM THE SLOAN DIGITAL SKY SURVEY
observer	Prof. William Brandt
object	SDSSJ153259-003944
dtcycle	0
cycle	P
ra_targ	233.249583
dec_targ	-0.66225
ra_nom	233.25083042513
dec_nom	-0.65259038656387
roll_nom	92.898657227607
revision	2
ontime	5152.0000047982
livetime	5086.7622785755
ontime2	5152.0000047982
ontime3	5152.0000047982
ontime5	5152.0000047982
ontime6	5152.0000047982
ontime7	5152.0000047982
ontime8	5152.0000047982
l2events	60881



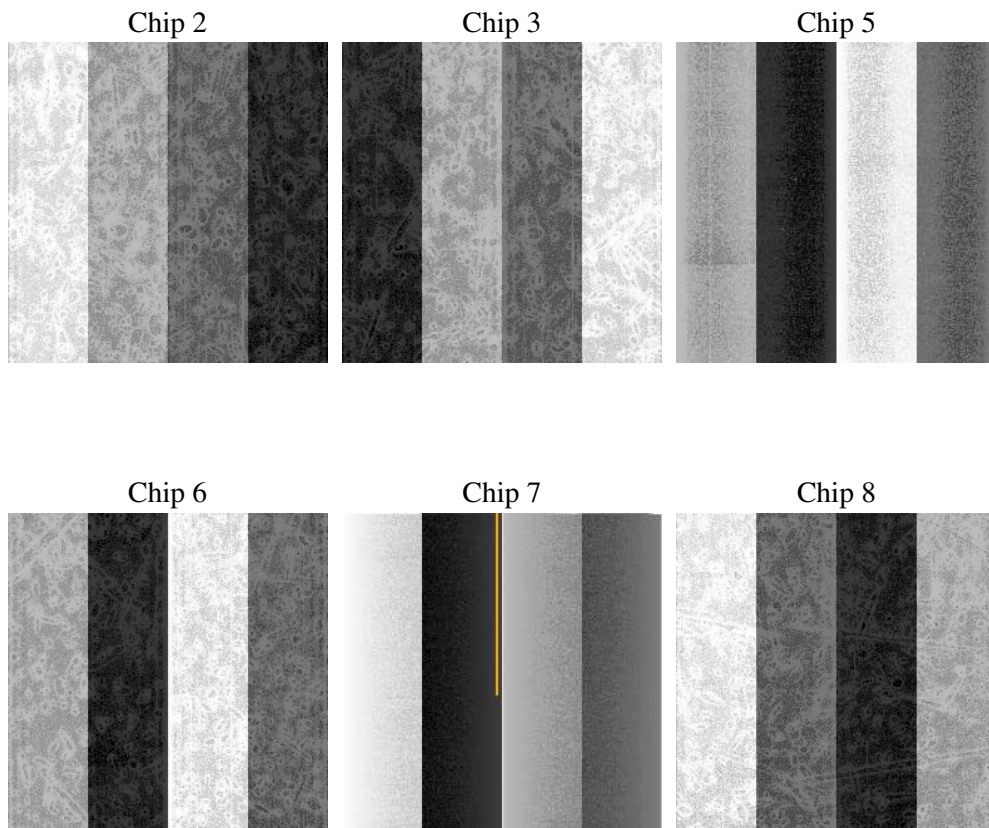
2 OBI

2.1 OBI

2.1.1 Images



2.1.2 Bias



2.1.3 Parameters

obi_num	0
ascdsver	7.6.9
caldsver	3.2.4
date	2006-11-15T23:35:12
revision	2

sched_exp_time	5000.000000
ontime	5360.6169178337
ontime2	5360.6168979108
ontime3	5360.6168979108
ontime5	5360.6169178337
ontime6	5360.6169178337
ontime7	5360.6169178337
ontime8	5360.6168979108
l1events	275678

2.1.4 Events

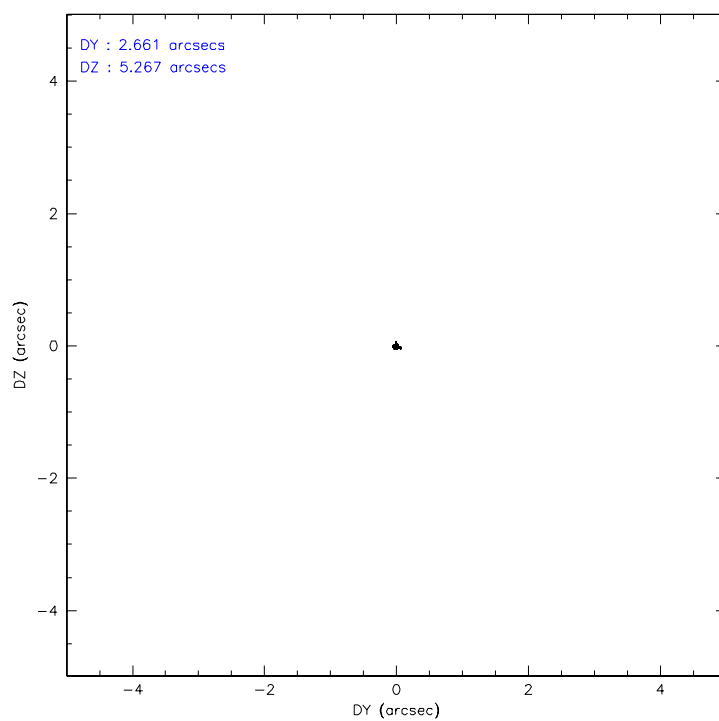
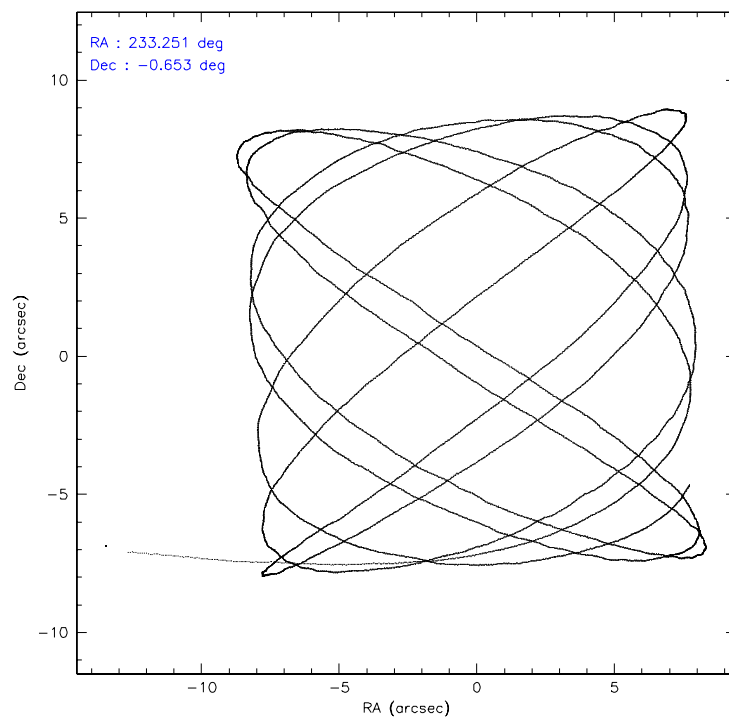
	ccd 2	ccd 3	ccd 5	ccd 6	ccd 7	ccd 8
level 1 events	40108	37335	54973	39420	49116	54726
rejected events	35065	32428	29395	34063	29432	38896
rejected %	87%	86%	53%	86%	59%	71%

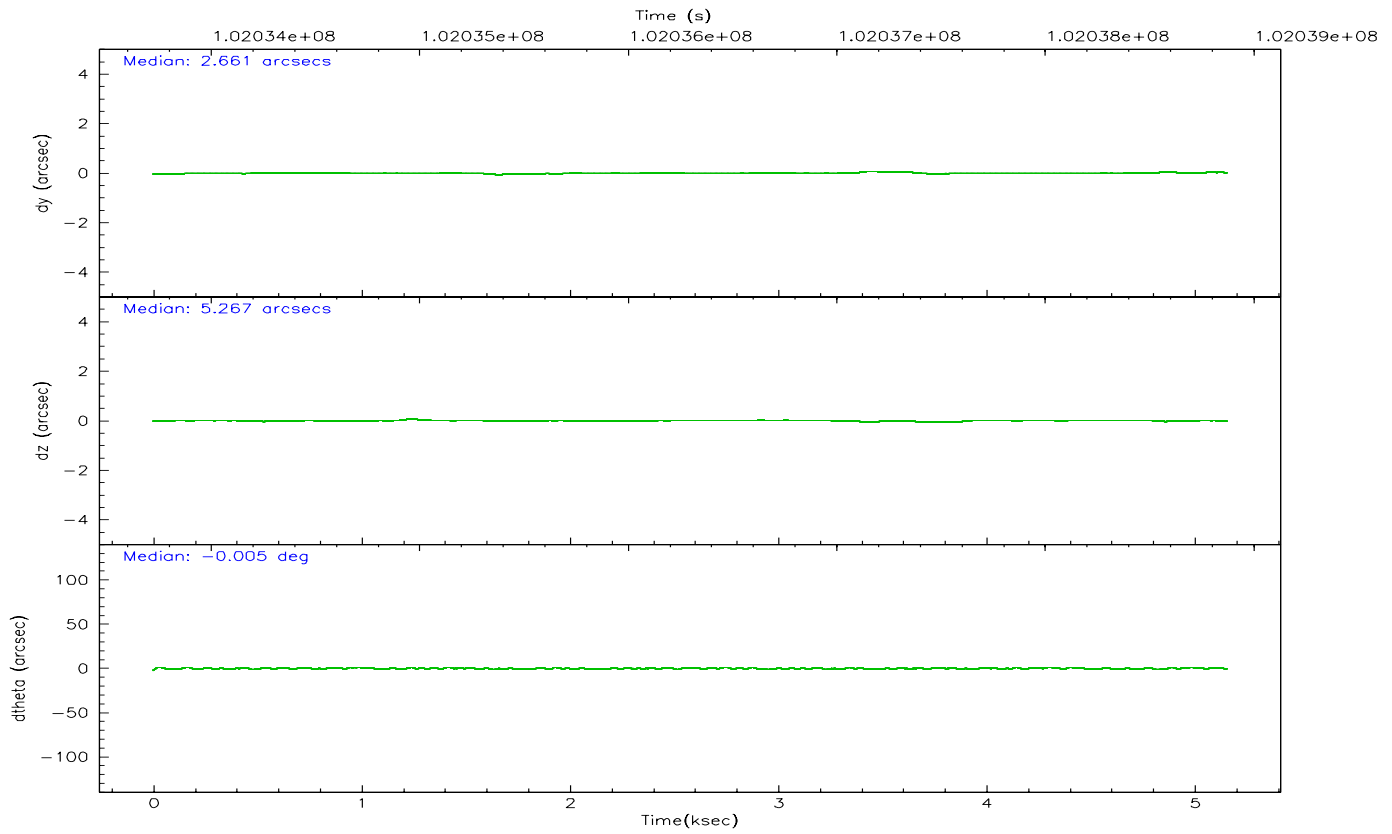
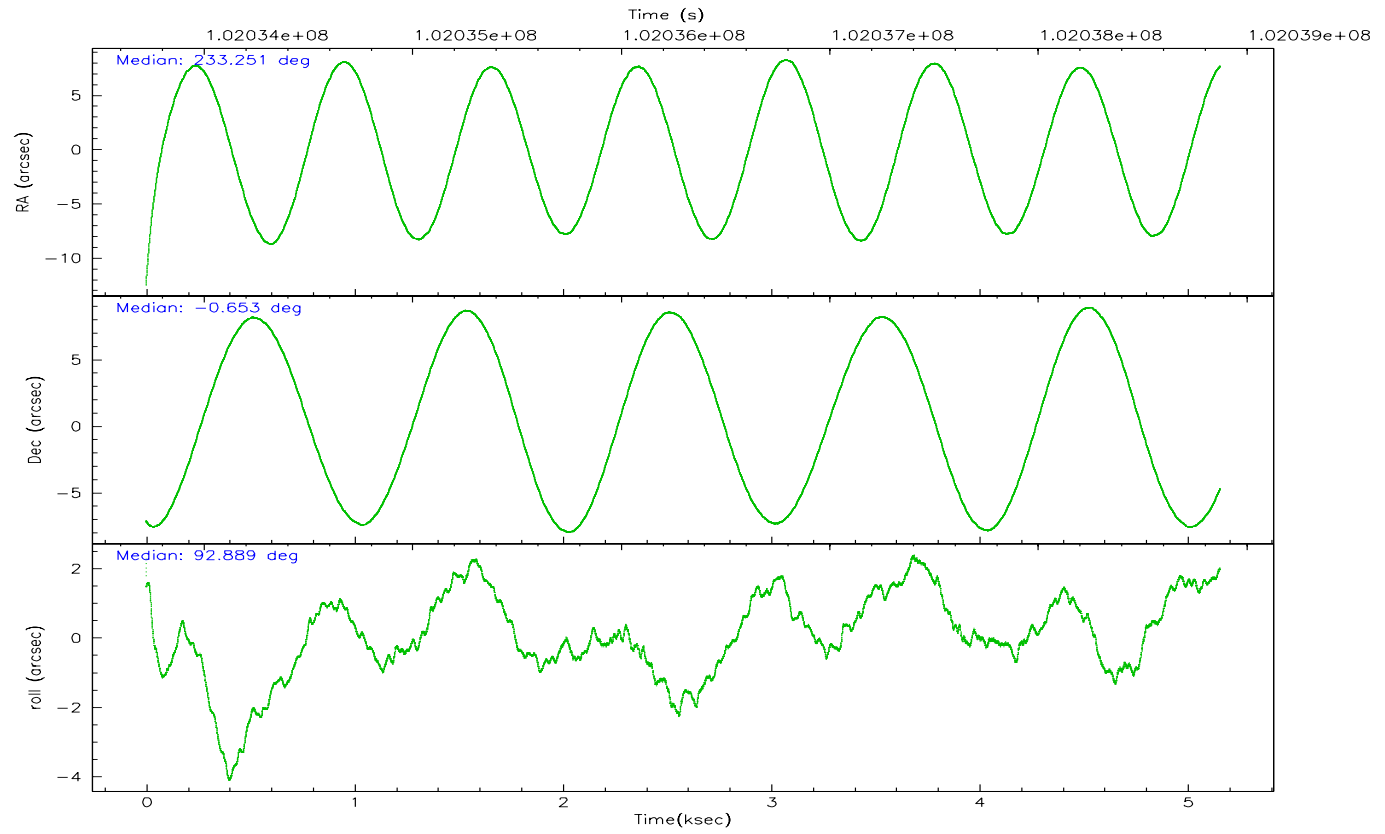
	ccd 2	ccd 3	ccd 5	ccd 6	ccd 7	ccd 8
grade 0 events	2362	2235	4423	2535	1698	6103
	5%	5%	8%	6%	3%	11%
grade 1 events	13	29	132	17	45	57
	0%	0%	0%	0%	0%	0%
grade 2 events	1246	1194	7597	1259	4976	2899
	3%	3%	13%	3%	10%	5%
grade 3 events	380	431	674	428	1271	2141
	0%	1%	1%	1%	2%	3%
grade 4 events	441	445	643	410	1171	1998
	1%	1%	1%	1%	2%	3%
grade 5 events	1202	1322	2448	1511	3154	1996
	2%	3%	4%	3%	6%	3%
grade 6 events	889	849	13273	1019	11426	3565
	2%	2%	24%	2%	23%	6%
grade 7 events	33575	30830	25783	32241	25375	35967
	83%	82%	46%	81%	51%	65%

2.2 Compared Parameters

Parameter	Planned	Actual	Parameter	Planned	Actual
Instrument	ACIS	ACIS	Obspar format version number	6	6
Detector	ACIS-235678	ACIS-235678	Obspar file type	PREDICTED	ACTUAL
Grating	NONE	NONE	Obspar update status	NONE	UPDATED
Data mode	FAINT	FAINT	Number of optional ACIS chips dropped	0	0
Observation mode	POINTING	POINTING	On-chip summing requested	N	N
Pointing RA	233.265899	233.2508304251345	Subarray requested	NONE	NONE
Pointing Dec	-0.675313	-0.6525903865638706	Alternating exposures requested	N	N
Pointing Roll	92.742193	92.89865722760732	Primary exposure time	0.000000	3.2
SIM focus pos (mm)	-0.684267	-0.6828225247311905			
SIM defocus (mm)	0	0.001444936568705701			
SIM translation stage pos (mm)	-190.132523	-190.1425803651734			
SIM translation stage offset (mm)	0	0.01005778216563158			
Observation start time	102033872.184000	102032671.72156			
Observation start date	2001-03-26T22:43:28	2001-03-26T22:24:31			
Observation end time	102038872.184000	102039488.99682			
Observation end date	2001-03-27T00:06:48	2001-03-27T00:18:08			
Read mode	TIMED	TIMED			

2.3 Aspect



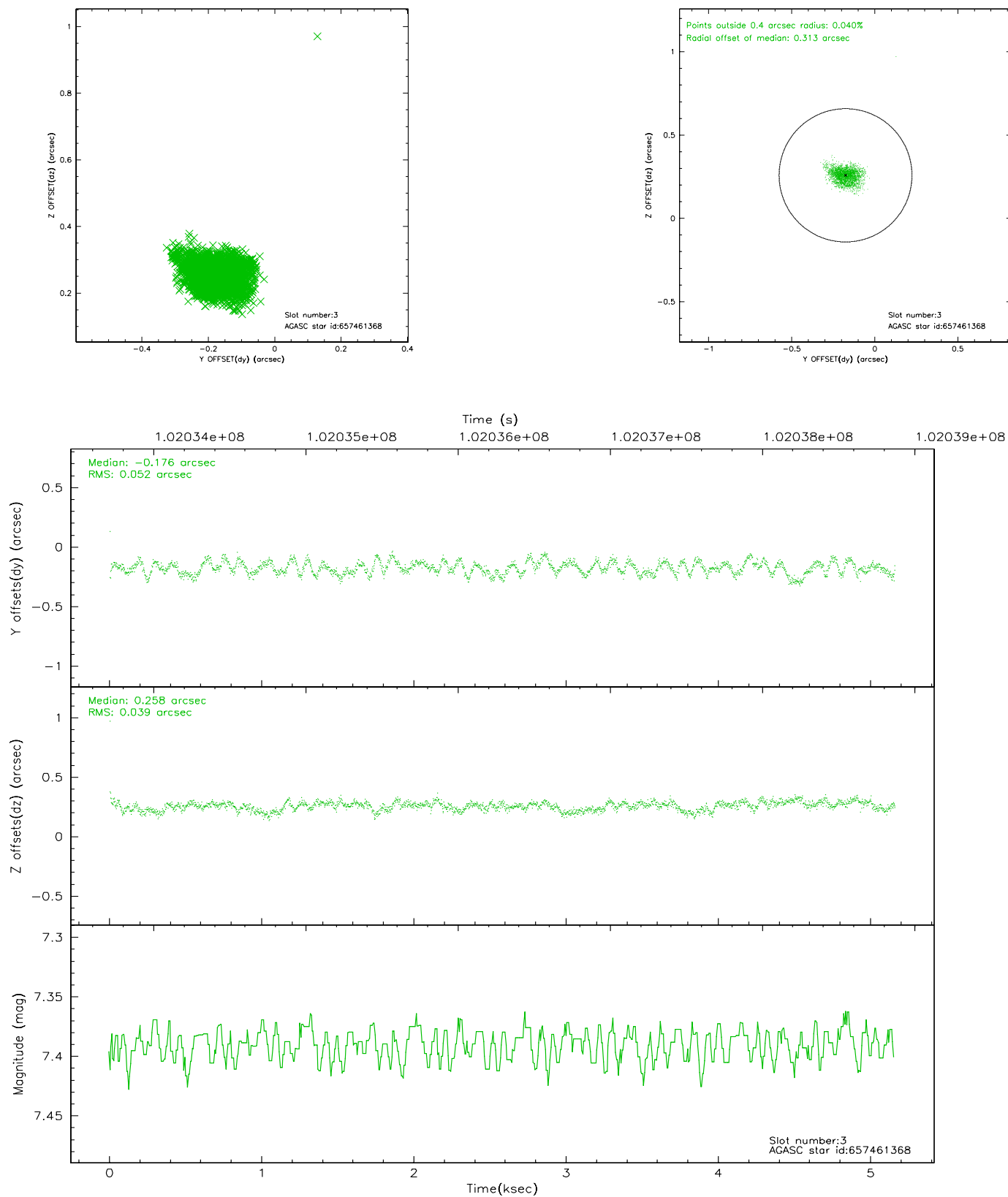


Slot Statistics

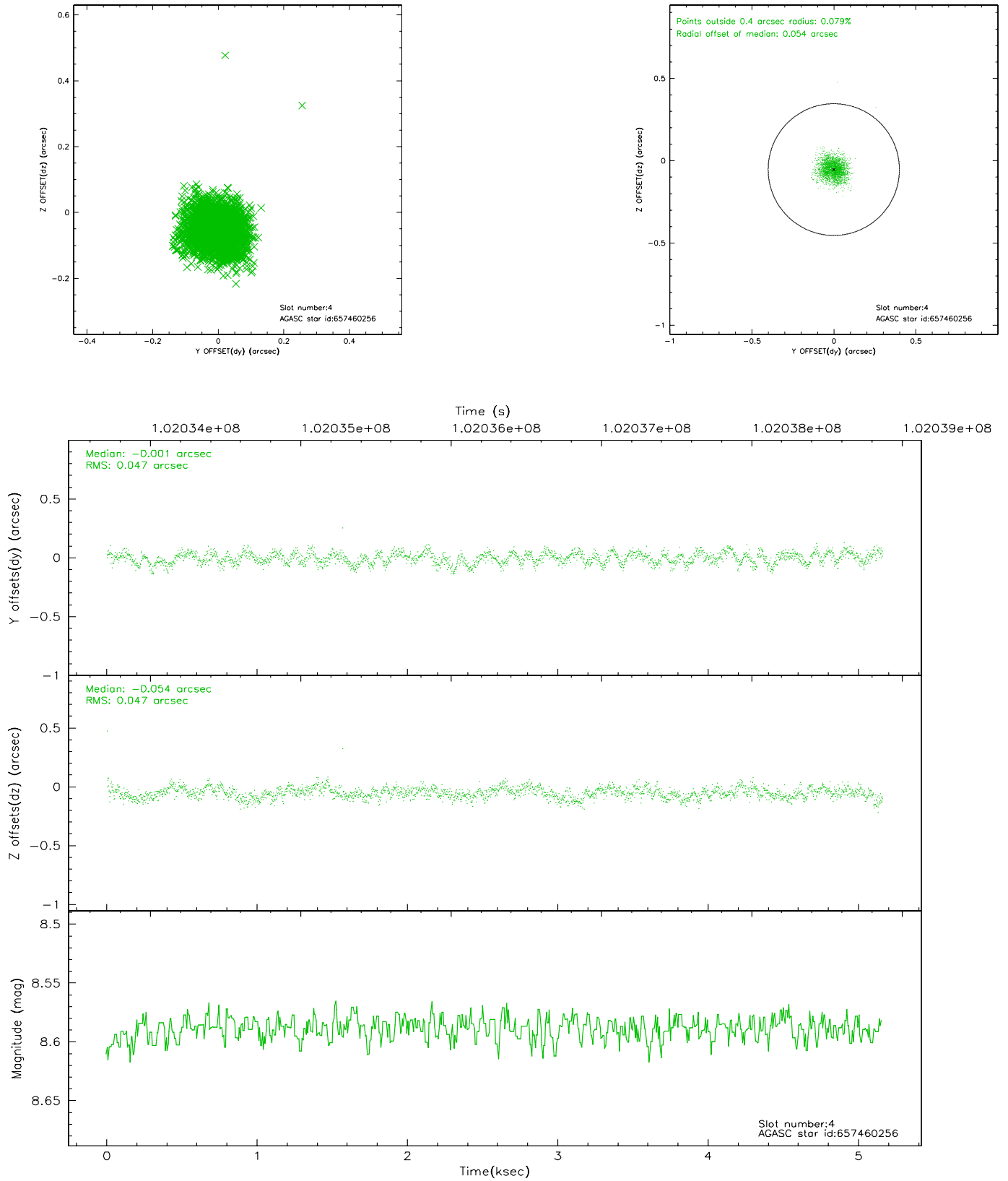
slot	status	id	mag	n_pts	med_dy	med_dz	dr1	dr2	ra	dec	mean_y	mean_z
0	FID	ACIS-S-2	7.11	1258	0.001	0.002	0.005	0.008	0.000000	0.000000	-755.25	-1726.35
1	FID	ACIS-S-4	7.20	1258	-0.038	0.001	0.005	0.009	0.000000	0.000000	2157.41	180.99
2	FID	ACIS-S-6	7.36	1258	0.008	0.004	0.006	0.011	0.000000	0.000000	408.19	819.68
3	GUIDE	657461368	7.39	2517	-0.176	0.258	0.066	0.109	233.706562	-0.146540	1825.81	-1675.63
4	GUIDE	657460256	8.59	2517	-0.001	-0.054	0.070	0.111	232.775604	-0.780171	-292.11	1779.67
5	GUIDE	657463000	9.16	2516	0.059	-0.013	0.081	0.134	233.155519	-0.333918	1246.71	338.53
6	GUIDE	657459720	9.38	2516	0.100	-0.173	0.090	0.145	232.649919	-0.849723	-520.84	2244.15
7	GUIDE	657460864	9.40	2515	0.021	-0.018	0.092	0.148	232.809883	-0.724381	-98.25	1648.44

2.4 Star Slots

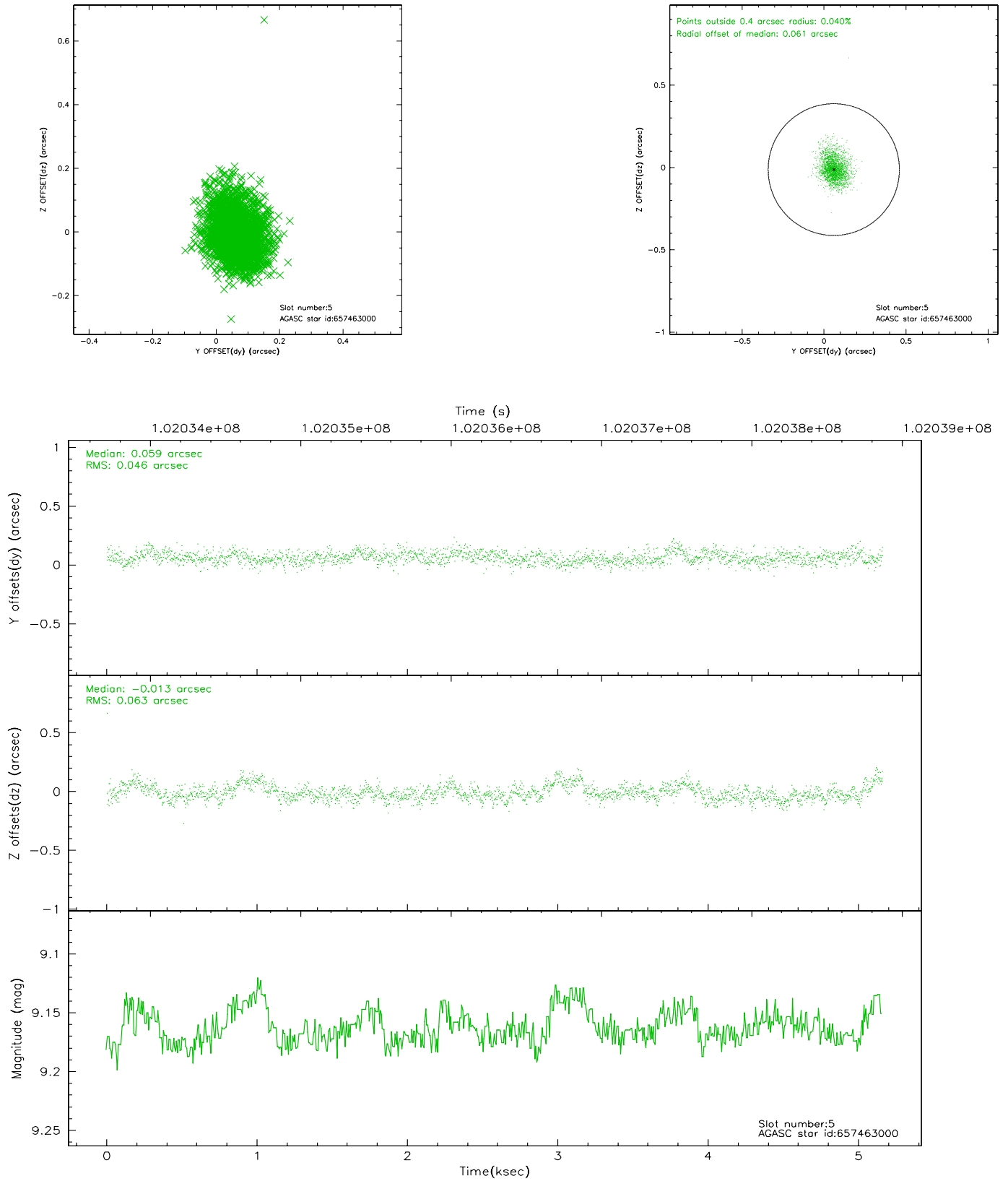
2.4.1 Slot 3



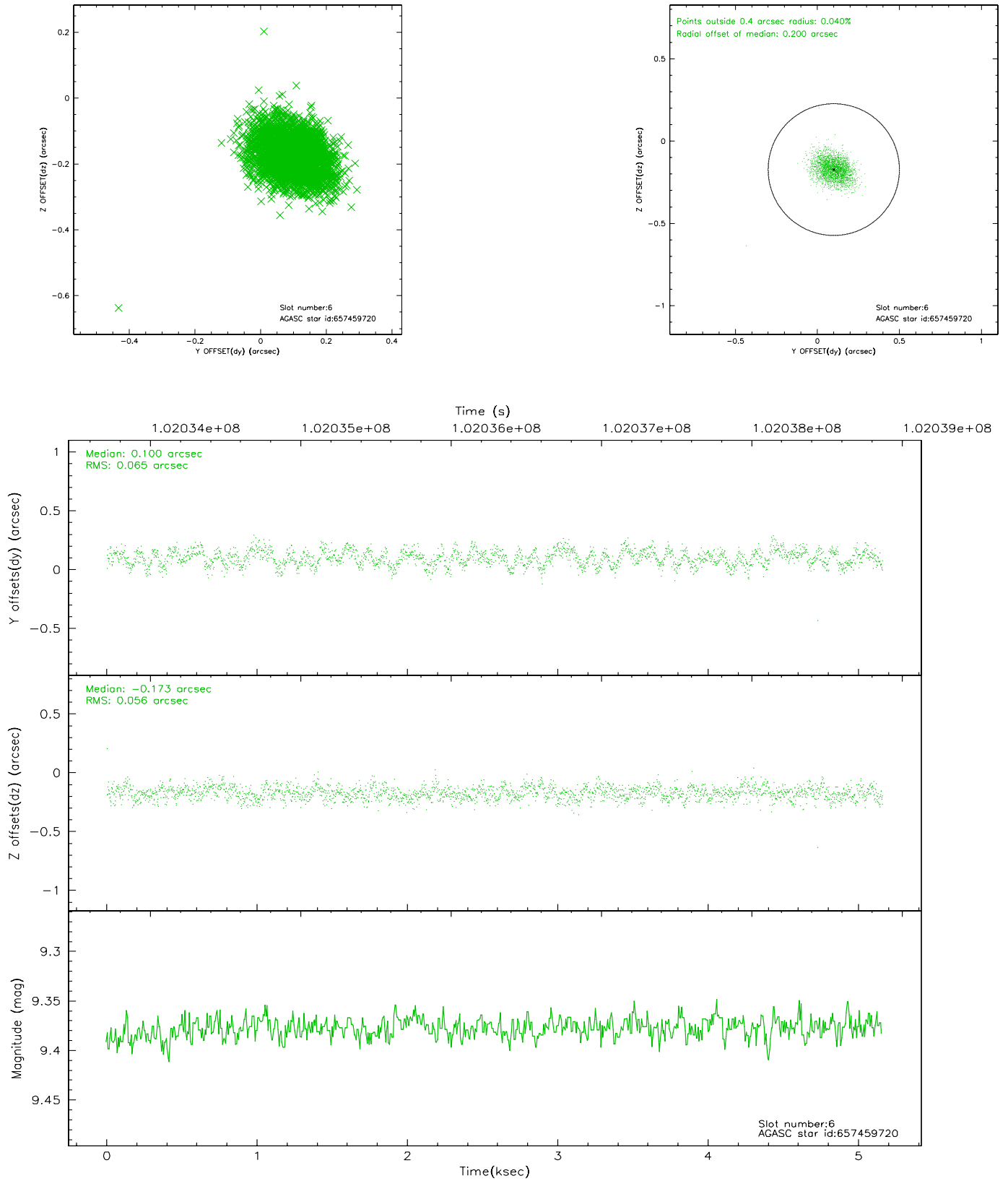
2.4.2 Slot 4



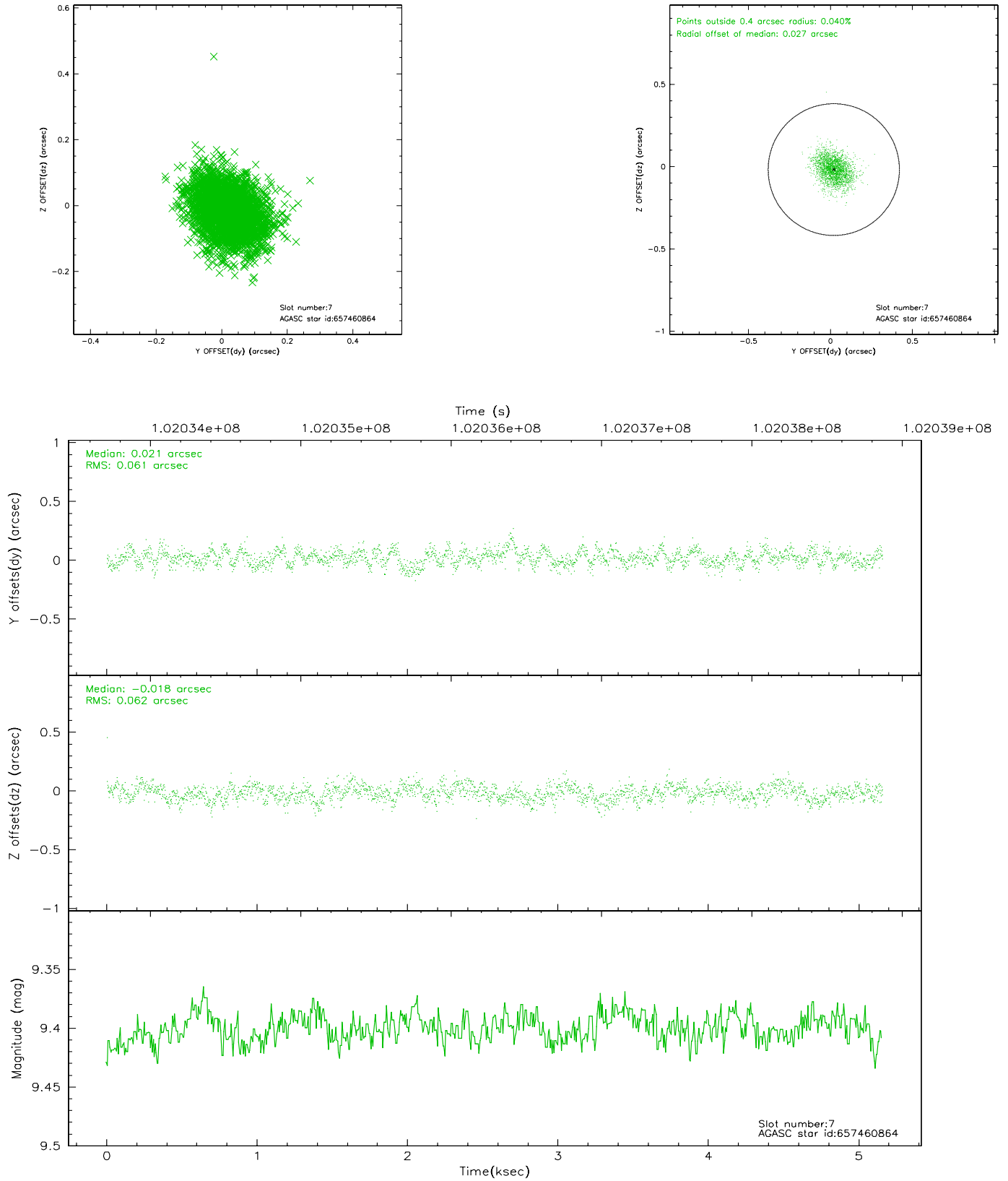
2.4.3 Slot 5



2.4.4 Slot 6

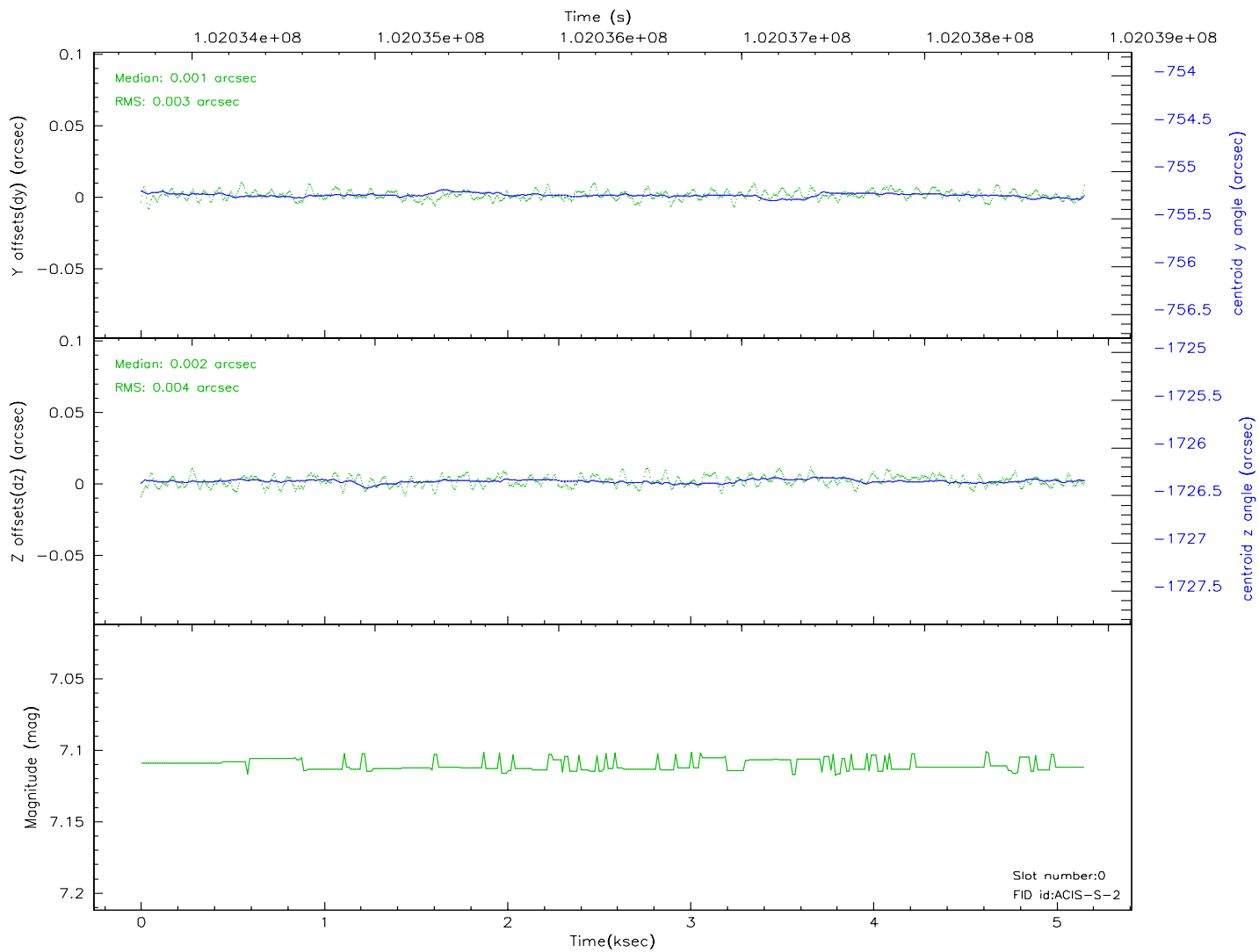
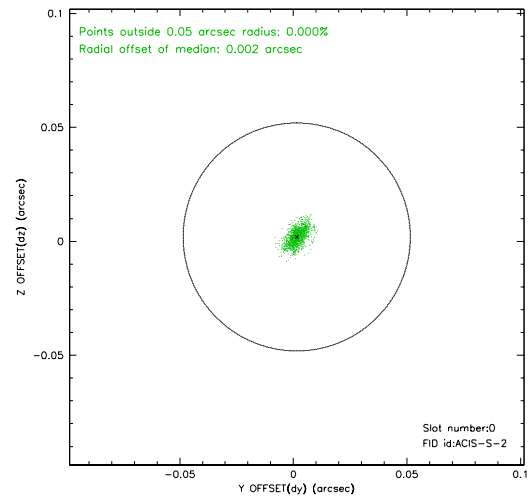
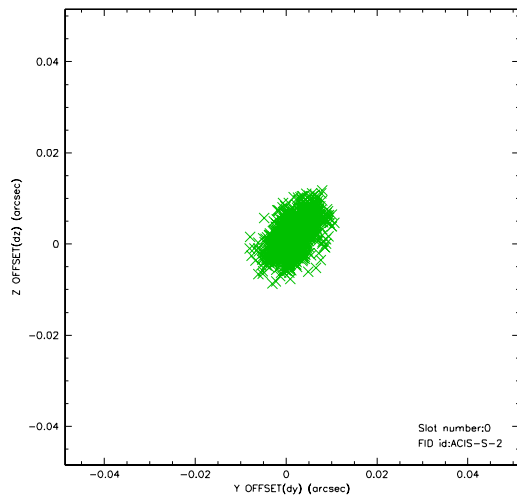


2.4.5 Slot 7

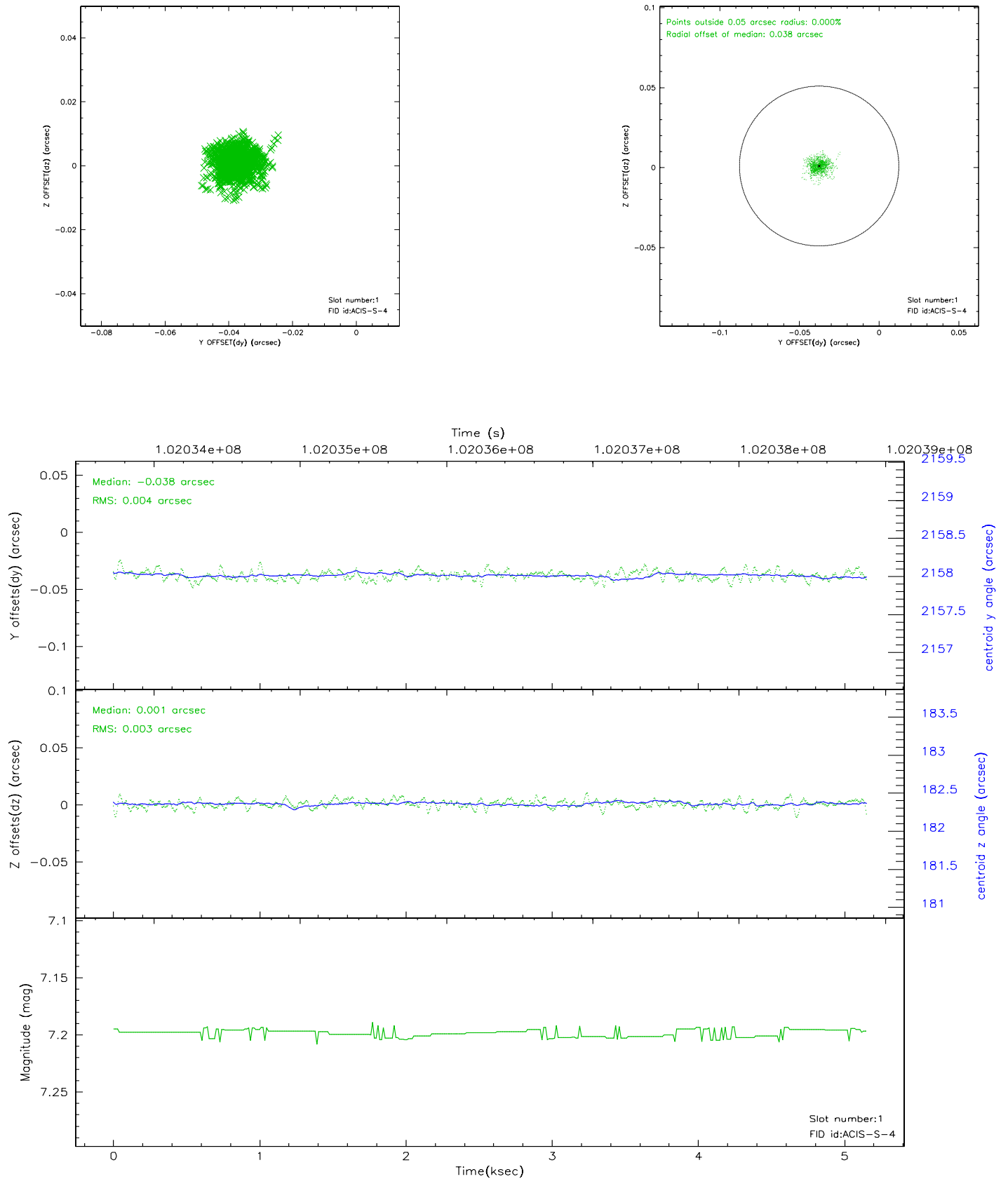


2.5 FID Slots

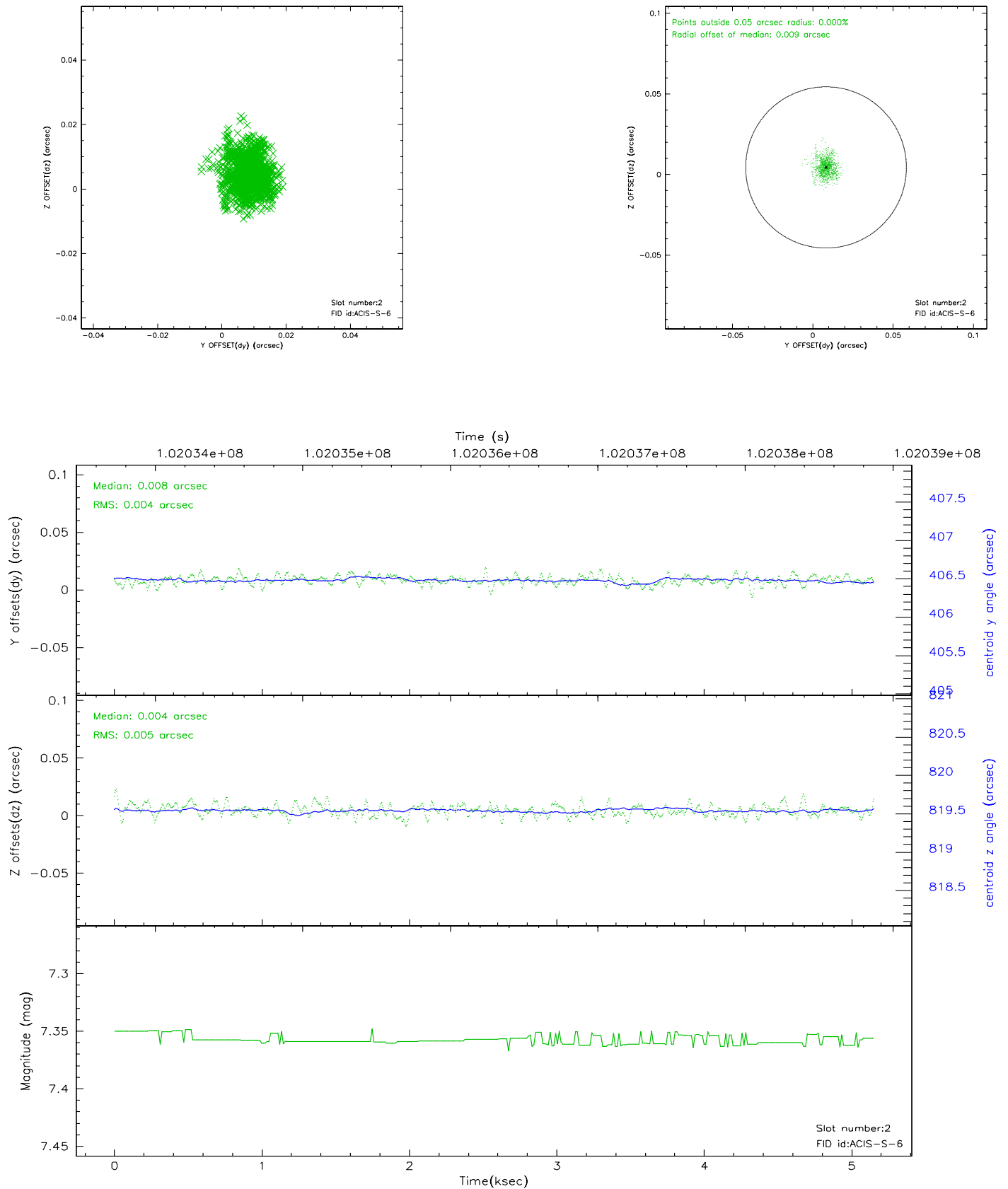
2.5.1 Slot 0



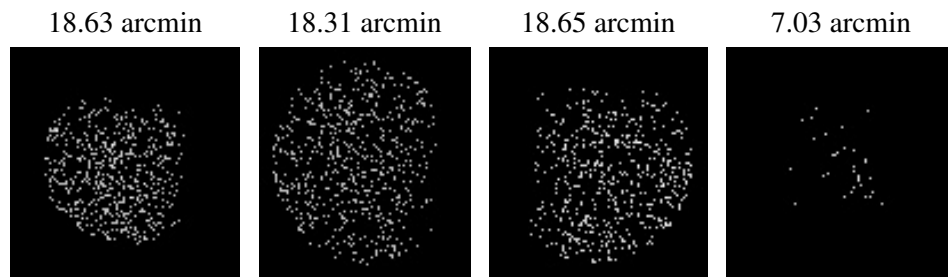
2.5.2 Slot 1



2.5.3 Slot 2



3 Point Sources



A Summary

A.1 Status

V&V Scientist	Beth Sundheim
V&V Date (YYYY-MM-DD)	2006.11.16
V&V Edition	1
V&V Disposition and Status	OK
V&V Charge Time	5.15

A.2 Comments