

V&V Reference Report

L2 ASCDS Version : 7.6.9

Observation 1625 - L2 Version 001
Chandra X-Ray Center

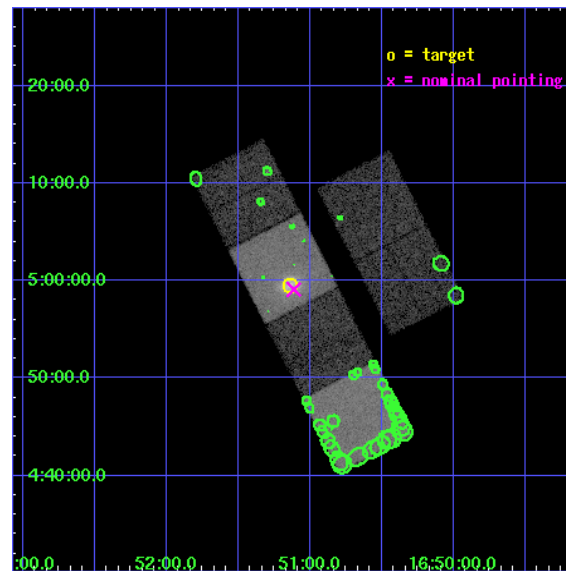
L2 Processing Date : Dec 15 2006

Contents

1	Front	2
2	OBI	3
2.1	OBI	3
2.1.1	Images	3
2.1.2	Bias	3
2.1.3	Parameters	4
2.1.4	Events	4
2.2	Compared Parameters	5
2.3	Aspect	6
2.4	Star Slots	9
2.4.1	Slot 3	9
2.4.2	Slot 4	10
2.4.3	Slot 5	11
2.4.4	Slot 6	12
2.4.5	Slot 7	13
2.5	FID Slots	14
2.5.1	Slot 0	14
2.5.2	Slot 1	15
2.5.3	Slot 2	16
3	Point Sources	17
A	Summary	18
A.1	Status	18
A.2	Comments	18

1 Front

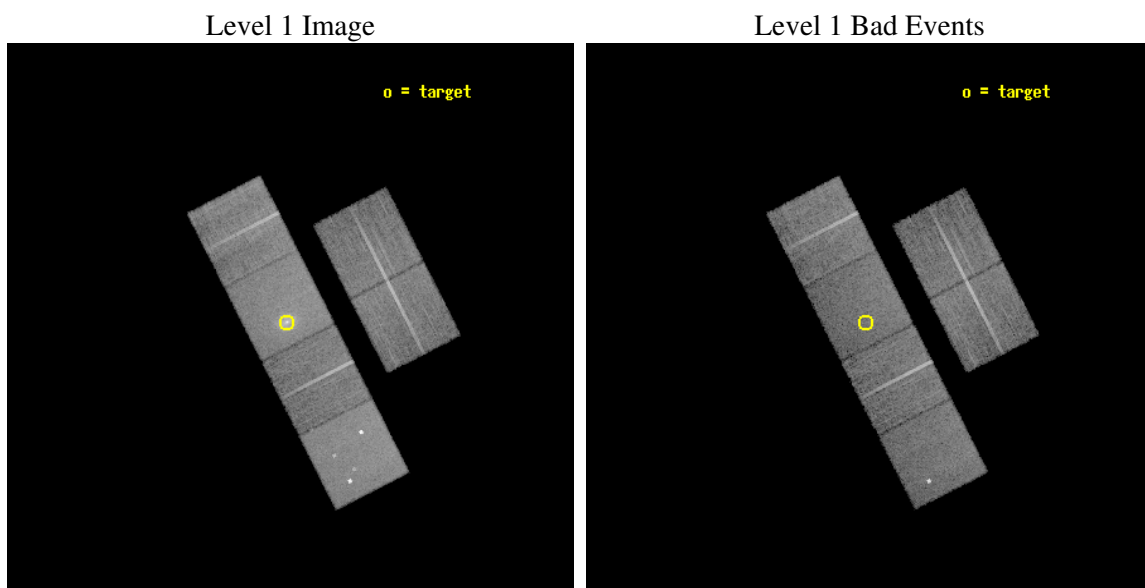
seq_num	700241
obs_id	1625
title	STUDIES OF RADIO JETS AND THE NARROW LINE REGIONS OF ACTIVE GALAXIES
observer	Prof. Andrew Wilson
object	3C348 (HERCULES A)
dtcycle	0
cycle	P
ra_targ	252.784167
dec_targ	4.992722
ra_nom	252.77825129489
dec_nom	4.9849659895726
roll_nom	243.00606591495
revision	2
ontime	14985.600013956
livetime	14795.843323335
ontime2	14985.600013956
ontime3	14985.600013956
ontime5	14985.600013956
ontime6	14985.600013956
ontime7	14985.600013956
ontime8	14985.600013956
l2events	167116



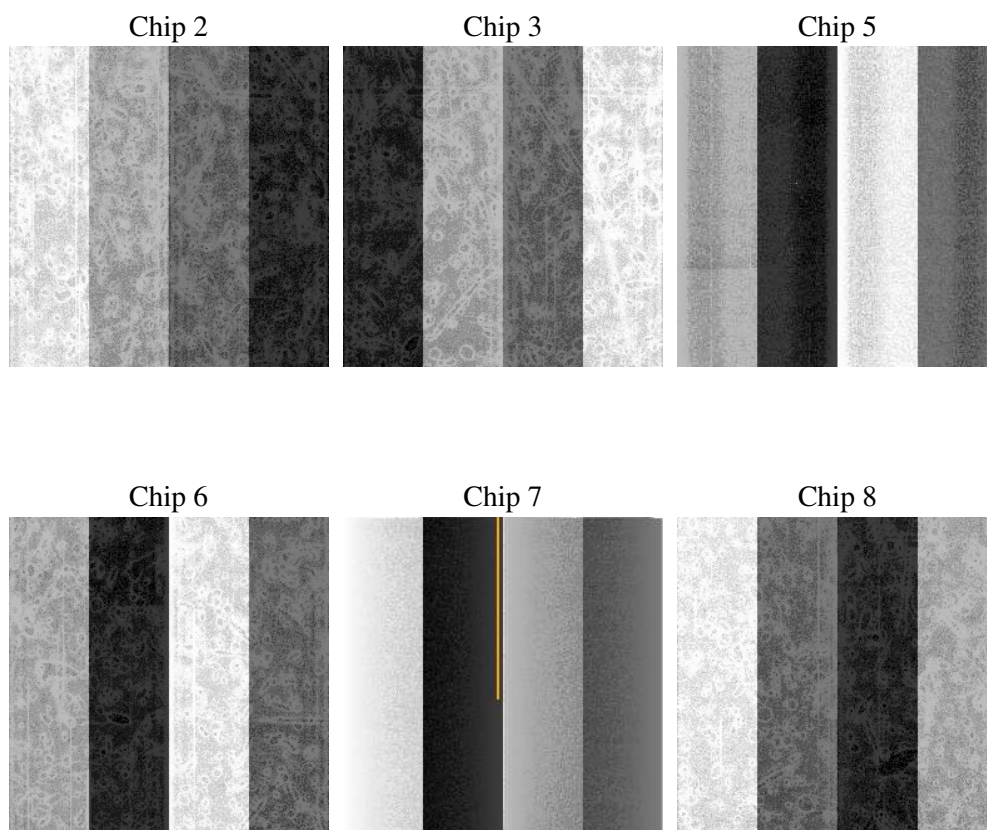
2 OBI

2.1 OBI

2.1.1 Images



2.1.2 Bias



2.1.3 Parameters

obi_num	1
ascdsver	7.6.9
caldsver	3.2.4
date	2006-12-15T16:58:28
revision	2

sched_exp_time	15300.000000
ontime	14989.620748848
ontime2	14989.620748848
ontime3	14989.620748848
ontime5	14989.620778754
ontime6	14989.620748848
ontime7	14989.620748848
ontime8	14989.620748848
l1events	716169

2.1.4 Events

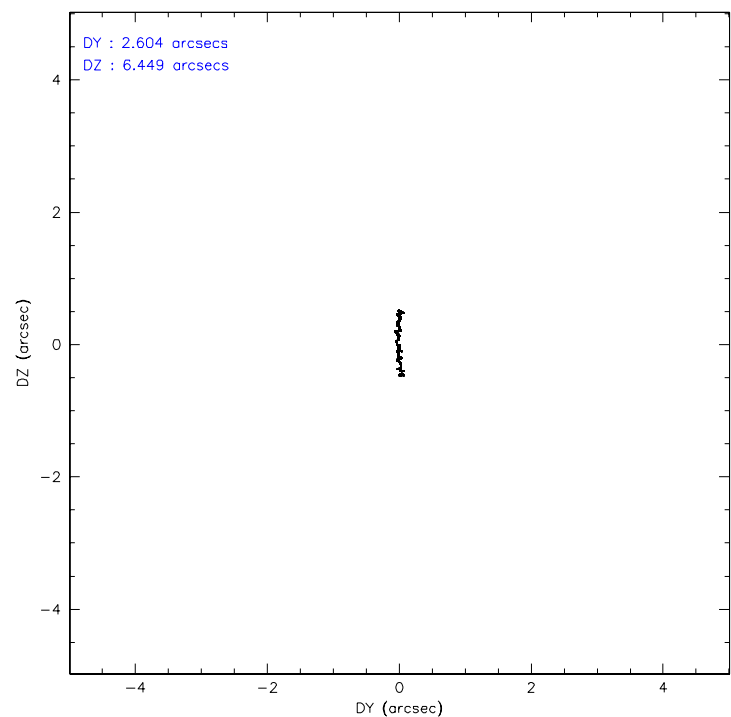
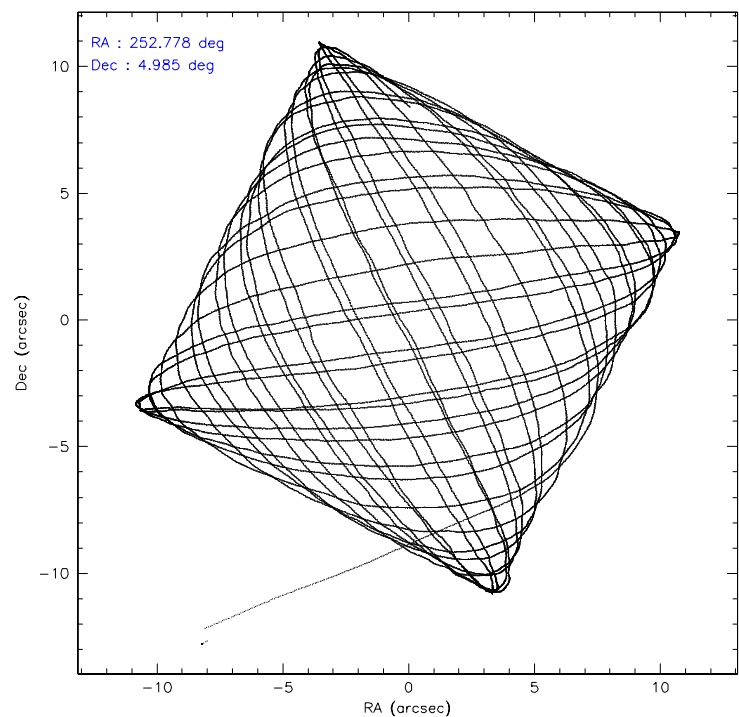
	ccd 2	ccd 3	ccd 5	ccd 6	ccd 7	ccd 8
level 1 events	103292	97183	147037	100024	144499	124134
rejected events	91552	85752	79301	87461	78169	98616
rejected %	88%	88%	53%	87%	54%	79%

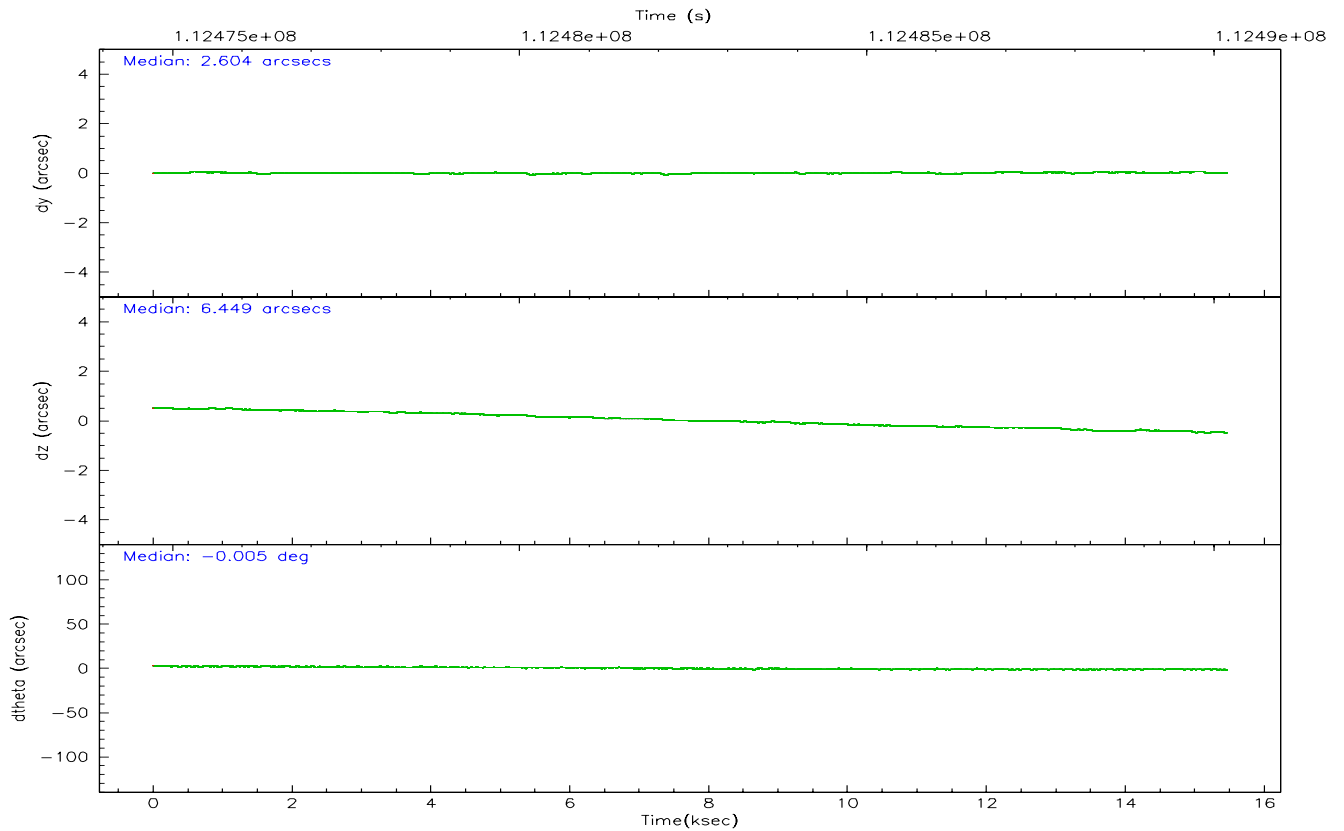
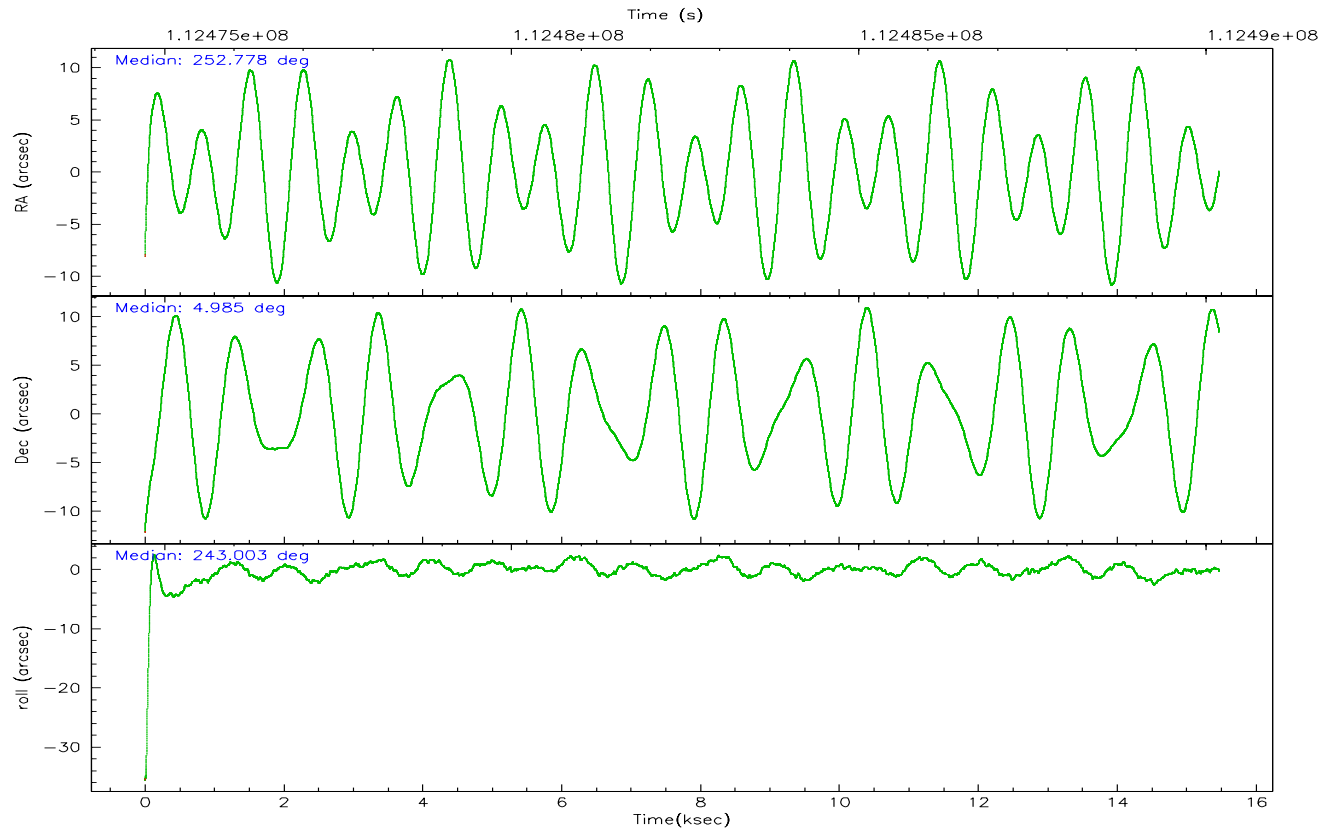
	ccd 2	ccd 3	ccd 5	ccd 6	ccd 7	ccd 8
grade 0 events	5301	5152	9503	5740	8367	8468
	5%	5%	6%	5%	5%	6%
grade 1 events	49	37	125	44	80	61
	0%	0%	0%	0%	0%	0%
grade 2 events	2424	2205	19674	2334	16723	5415
	2%	2%	13%	2%	11%	4%
grade 3 events	1032	1065	1951	1141	4565	2601
	0%	1%	1%	1%	3%	2%
grade 4 events	1071	1028	1498	1134	4606	2418
	1%	1%	1%	1%	3%	1%
grade 5 events	3471	3715	7778	4262	8699	5223
	3%	3%	5%	4%	6%	4%
grade 6 events	1916	1984	35135	2219	32100	6620
	1%	2%	23%	2%	22%	5%
grade 7 events	88028	81997	71373	83150	69359	93328
	85%	84%	48%	83%	47%	75%

2.2 Compared Parameters

Parameter	Planned	Actual	Parameter	Planned	Actual
Instrument	ACIS	ACIS	Obspar format version number	6	6
Detector	ACIS-235678	ACIS-235678	Obspar file type	PREDICTED	ACTUAL
Grating	NONE	NONE	Obspar update status	NONE	UPDATED
Data mode	VFAINT	VFAINT	Number of optional ACIS chips dropped	0	0
Observation mode	POINTING	POINTING	On-chip summing requested	N	N
Pointing RA	252.776515	252.7782512948863	Subarray requested	NONE	NONE
Pointing Dec	5.012176	4.984965989572615	Alternating exposures requested	N	N
Pointing Roll	242.849620	243.0060659149502	Primary exposure time	0.000000	3.2
SIM focus pos (mm)	-0.684267	-0.6828225247311905			
SIM defocus (mm)	0	0.001444936568705701			
SIM translation stage pos (mm)	-190.132523	-190.1400660498719			
SIM translation stage offset (mm)	0	0.00754346686406393			
Observation start time	112474888.184000	112473926.36544			
Observation start date	2001-07-25T19:00:24	2001-07-25T18:45:26			
Observation end time	112490188.184000	112490945.46611			
Observation end date	2001-07-25T23:15:24	2001-07-25T23:29:05			
Read mode	TIMED	TIMED			

2.3 Aspect



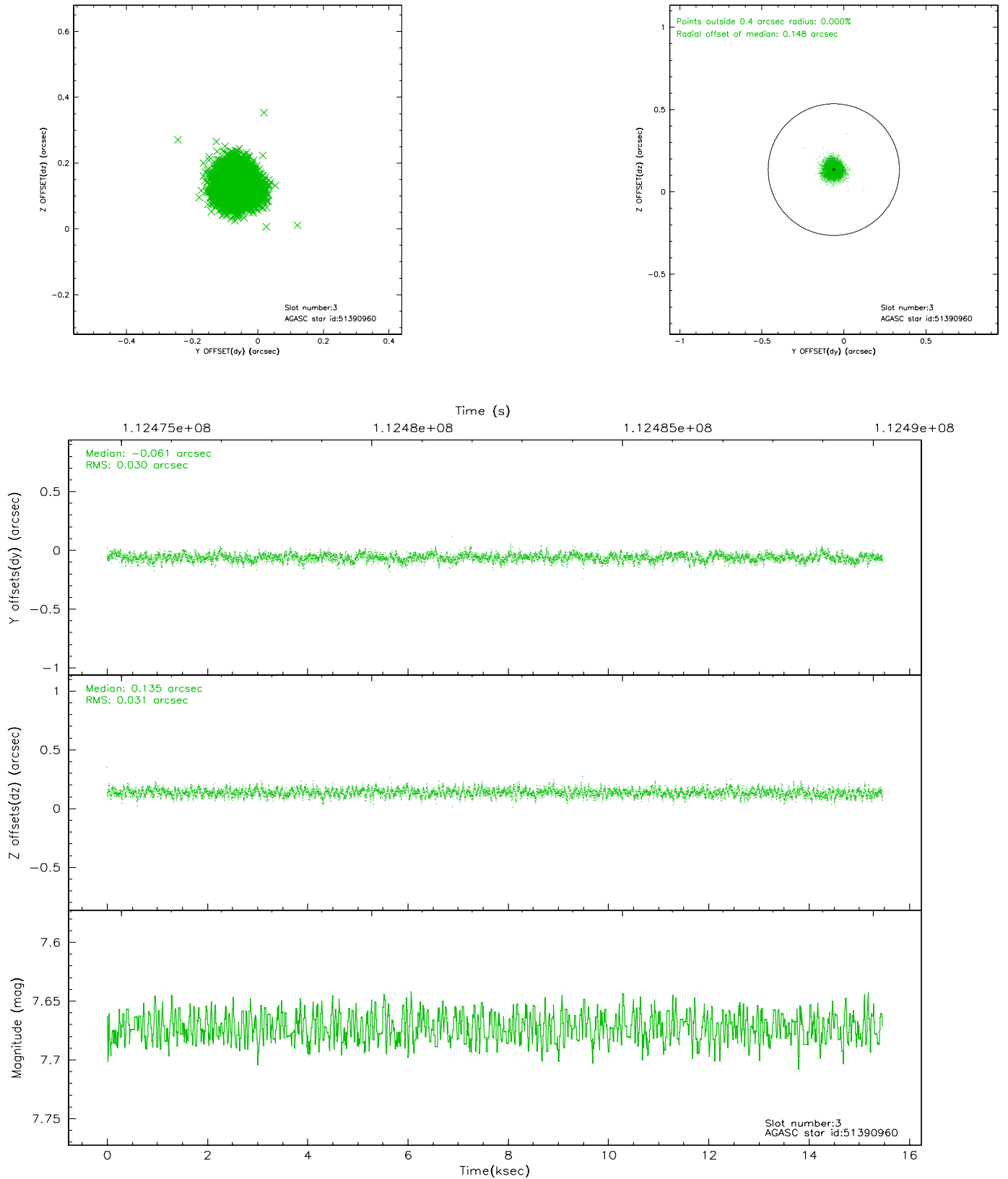


Slot Statistics

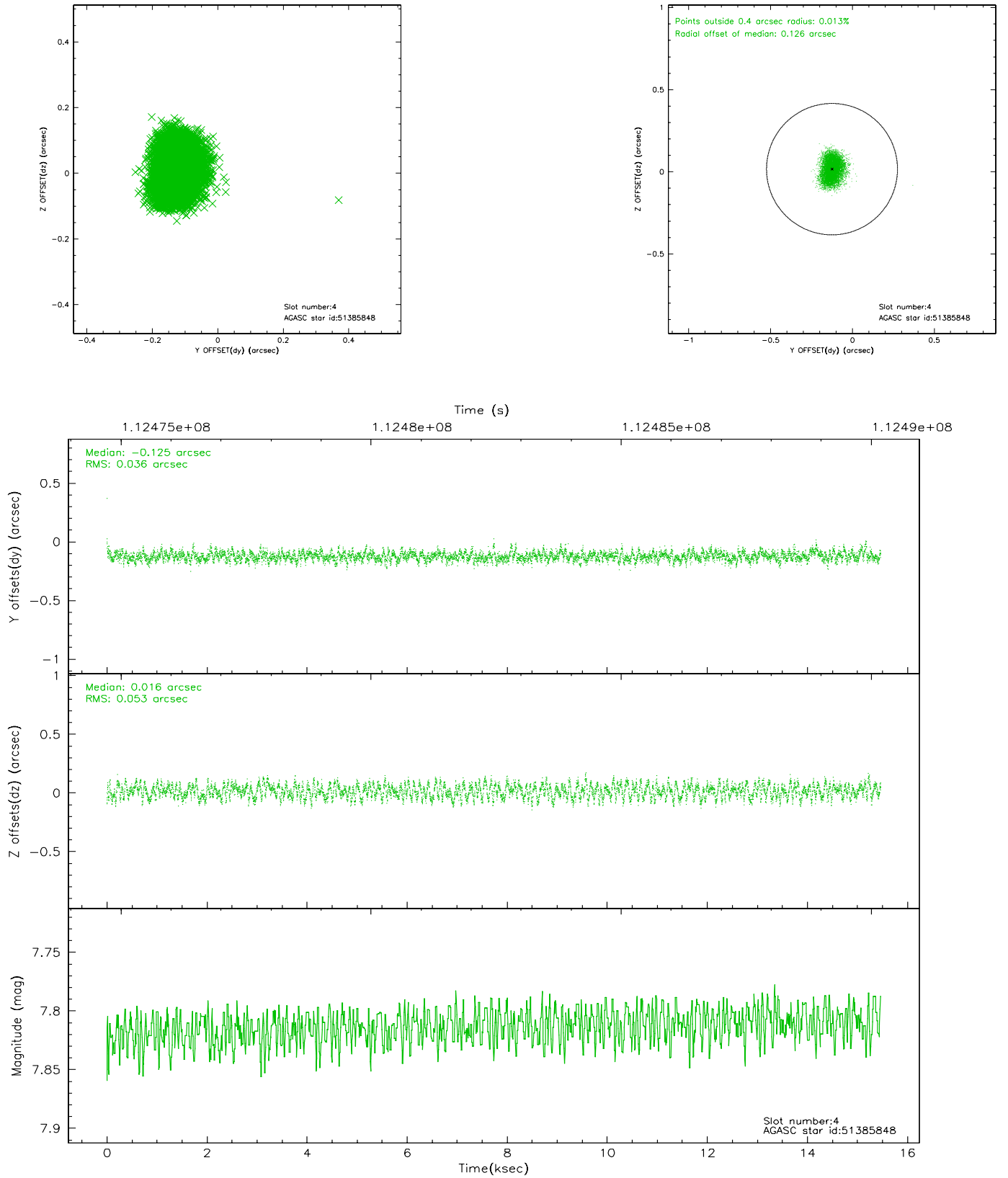
slot	status	id	mag	n_pts	med_dy	med_dz	dr1	dr2	ra	dec	mean_y	mean_z
0	FID	ACIS-S-2	7.11	3774	-0.014	0.024	0.011	0.016	0.000000	0.000000	-755.22	-1727.62
1	FID	ACIS-S-4	7.19	3774	-0.078	0.000	0.009	0.015	0.000000	0.000000	2157.83	180.59
2	FID	ACIS-S-5	7.24	3774	0.059	-0.015	0.008	0.015	0.000000	0.000000	-1807.65	174.51
3	GUIDE	51390960	7.67	7546	-0.061	0.135	0.046	0.075	253.089716	4.810839	131.84	1331.13
4	GUIDE	51385848	7.81	7547	-0.125	0.016	0.070	0.107	252.745605	5.488999	-1476.91	-881.18
5	GUIDE	51398584	8.23	7546	0.071	-0.009	0.047	0.076	252.688107	4.451511	1940.60	639.32
6	GUIDE	51388904	8.22	7546	0.069	-0.026	0.056	0.091	252.767239	4.783010	749.66	347.68
7	GUIDE	51389856	8.56	7546	0.047	-0.111	0.069	0.110	252.375344	5.365072	-474.44	-1858.87

2.4 Star Slots

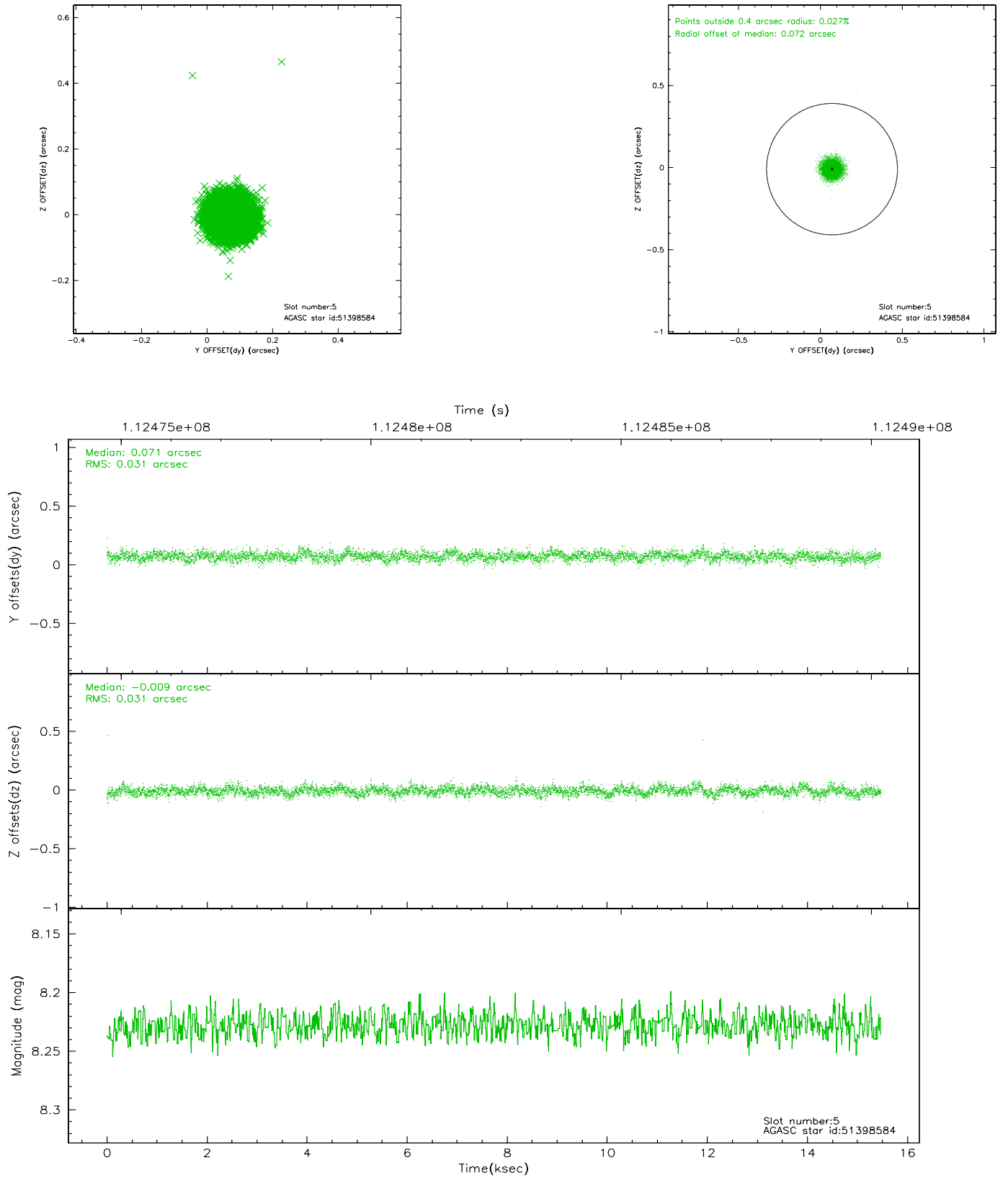
2.4.1 Slot 3



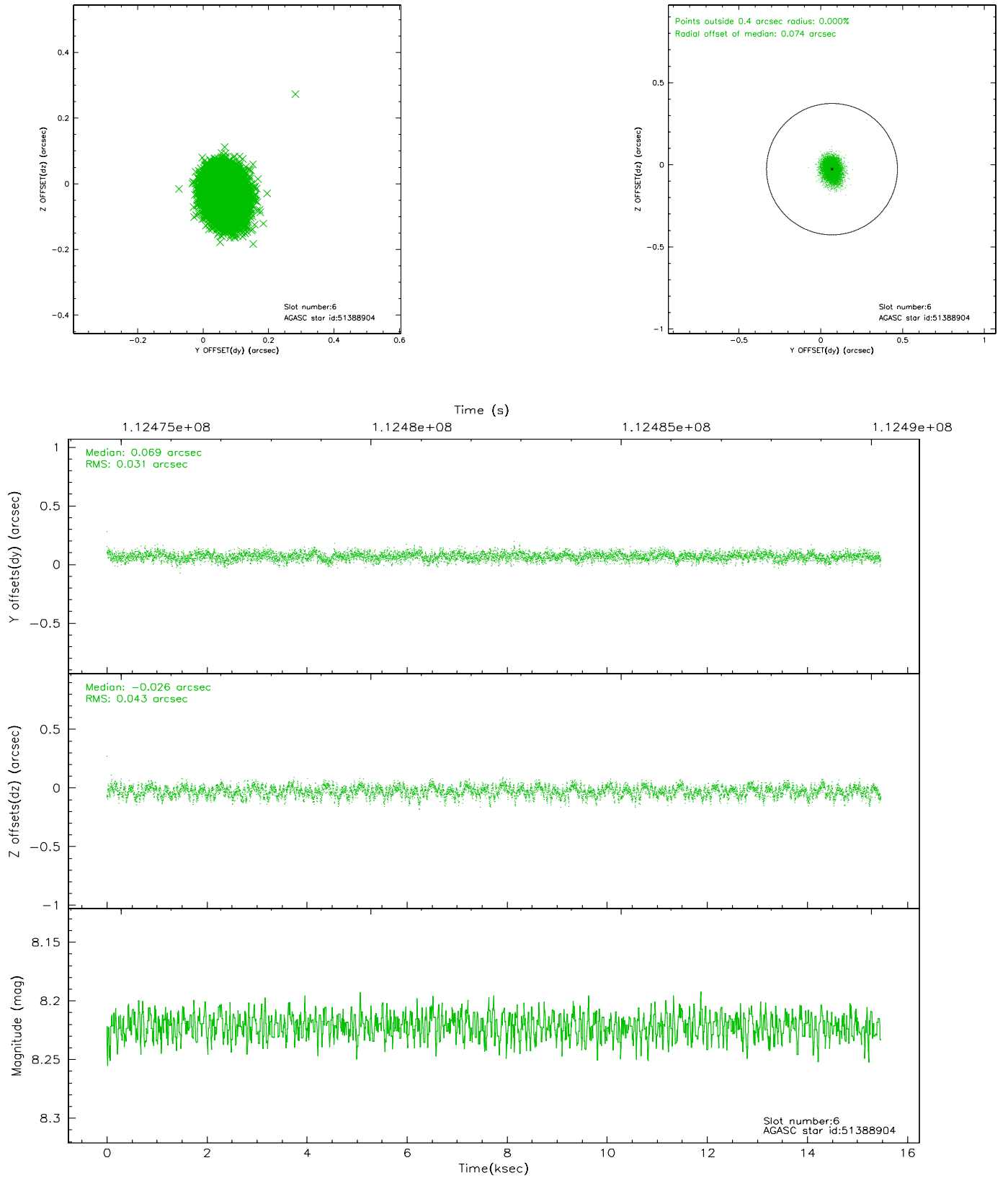
2.4.2 Slot 4



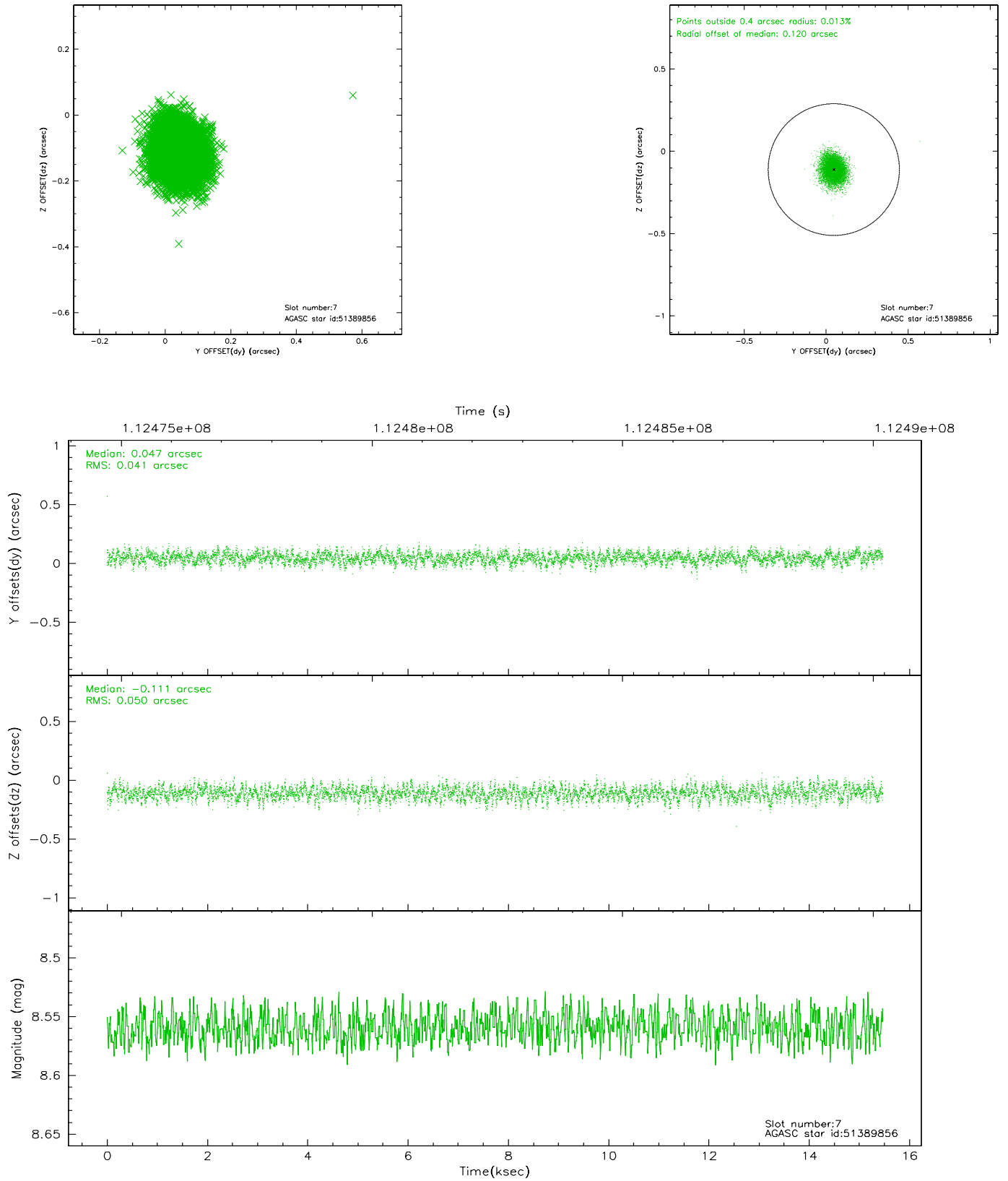
2.4.3 Slot 5



2.4.4 Slot 6

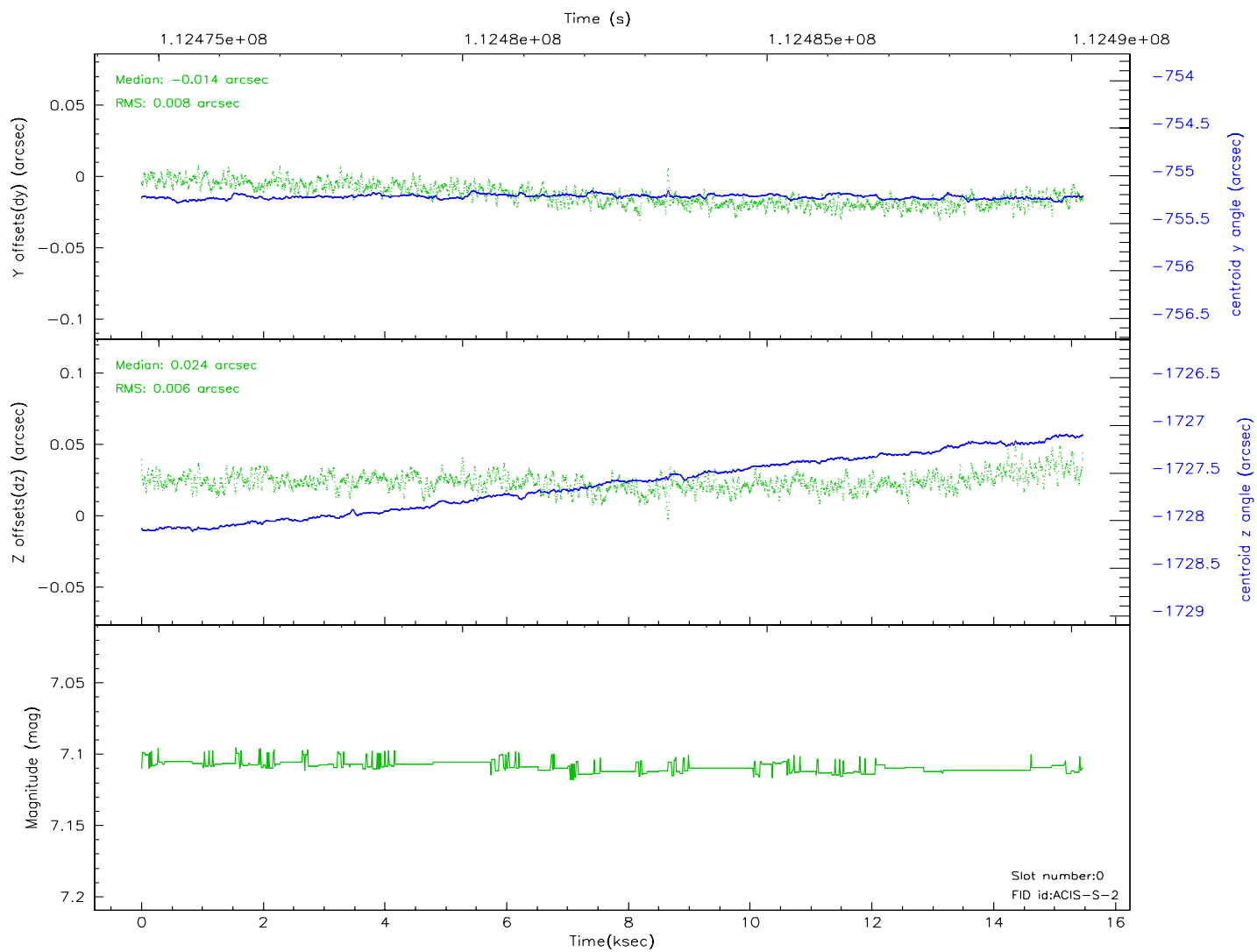
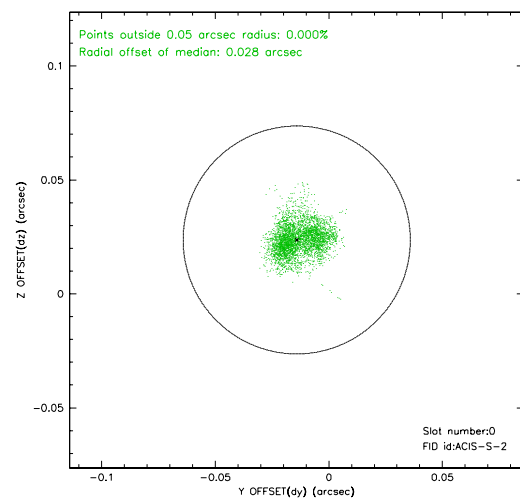
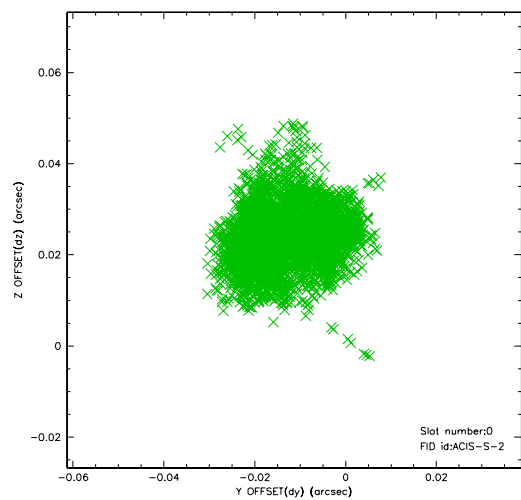


2.4.5 Slot 7

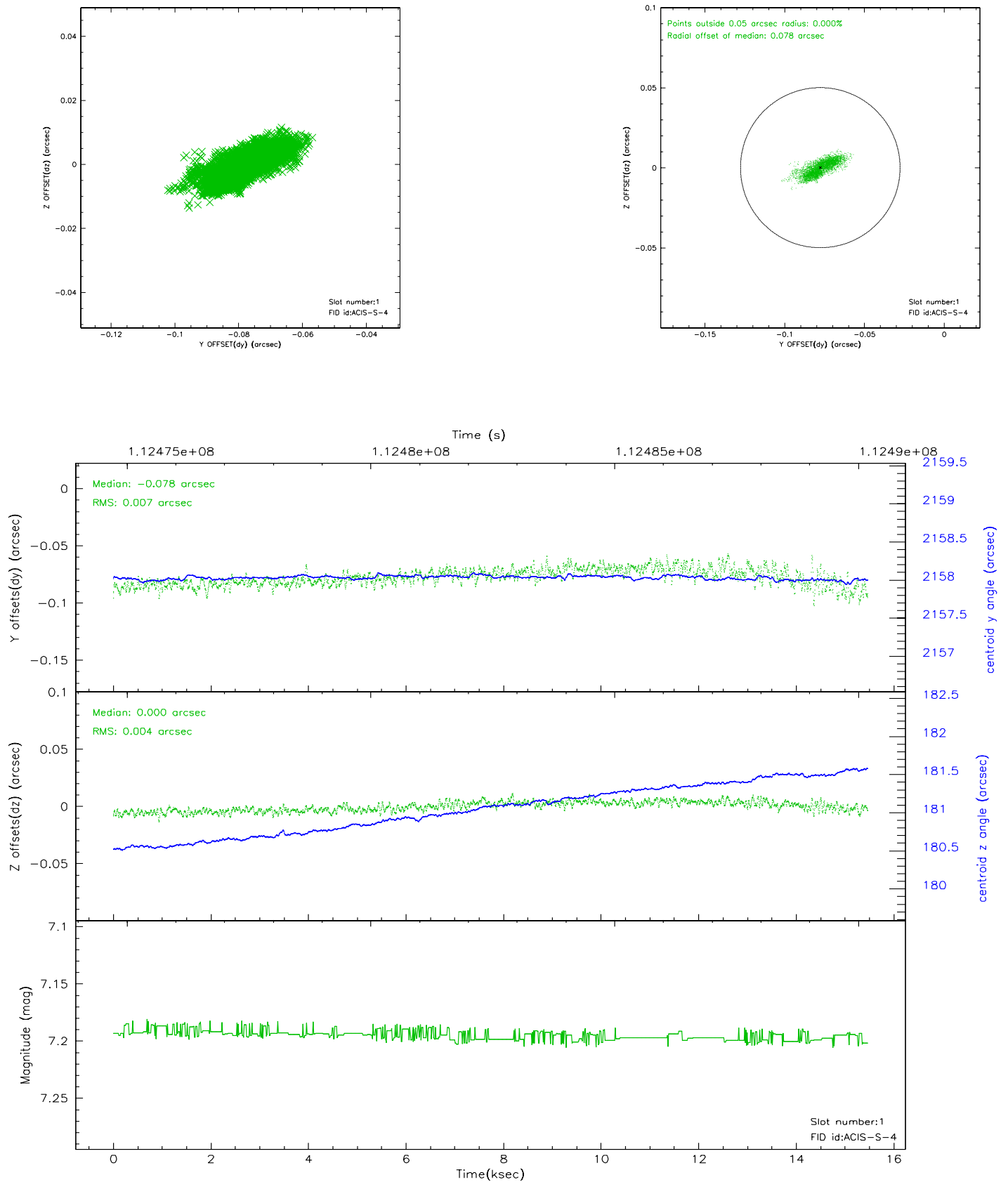


2.5 FID Slots

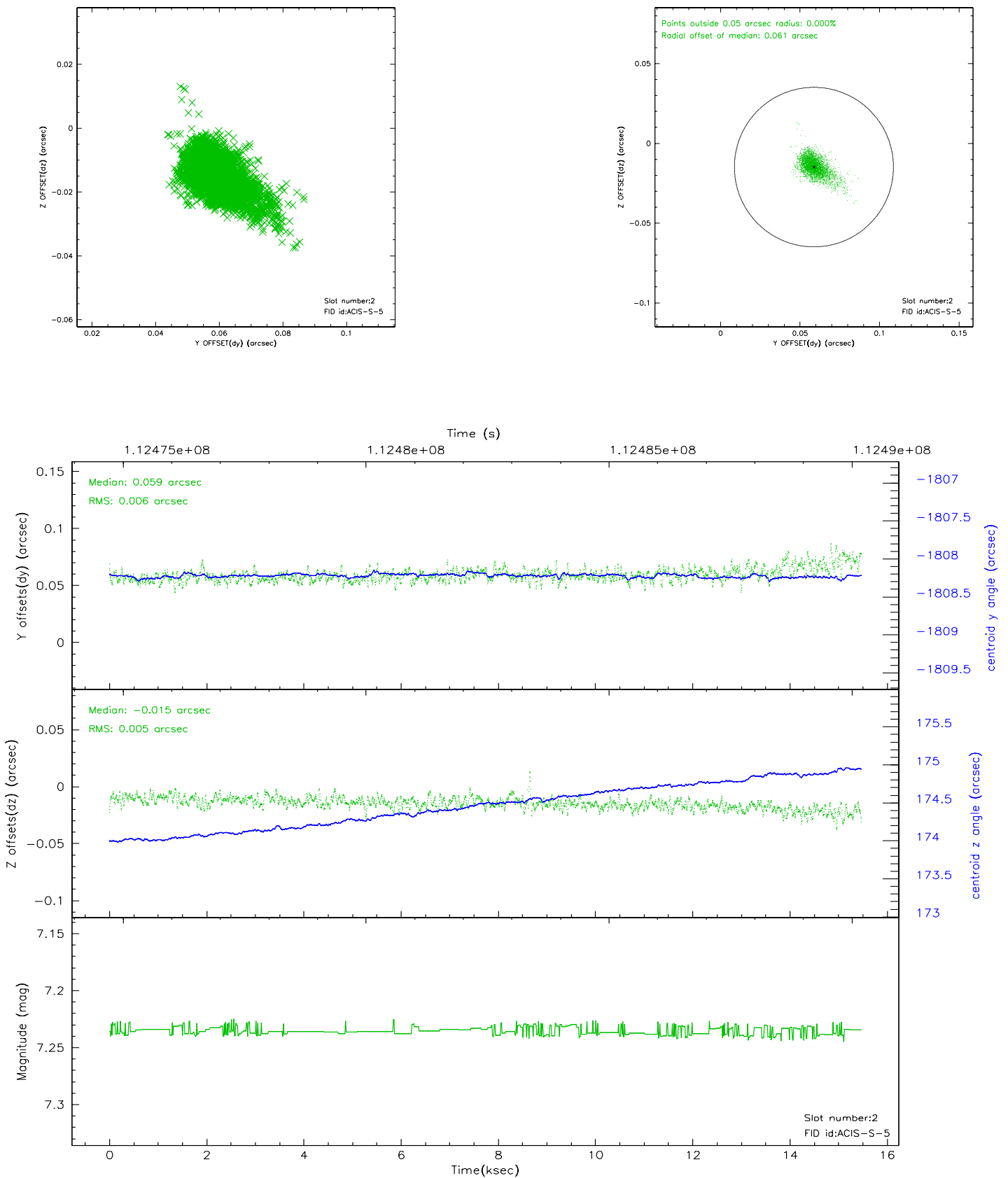
2.5.1 Slot 0



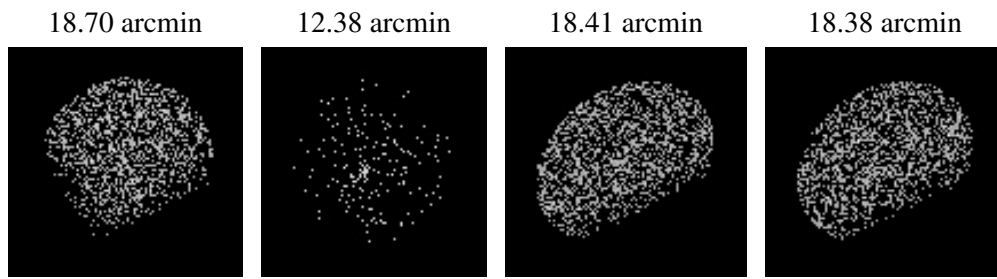
2.5.2 Slot 1



2.5.3 Slot 2



3 Point Sources



A Summary

A.1 Status

V&V Scientist	Beth Sundheim
V&V Date (YYYY-MM-DD)	2006.12.15
V&V Edition	1
V&V Disposition and Status	OK
V&V Charge Time	15

A.2 Comments