

V&V Reference Report

L2 ASCDS Version : 7.6.9

Observation 1623 - L2 Version 001
Chandra X-Ray Center

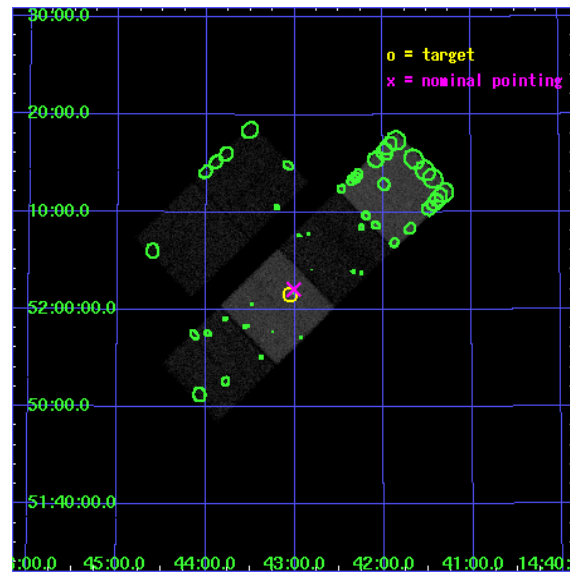
L2 Processing Date : Nov 15 2006

Contents

1	Front	2
2	OBI	3
2.1	OBI	3
2.1.1	Images	3
2.1.2	Bias	3
2.1.3	Parameters	4
2.1.4	Events	4
2.2	Compared Parameters	5
2.3	Aspect	6
2.4	Star Slots	9
2.4.1	Slot 3	9
2.4.2	Slot 4	10
2.4.3	Slot 5	11
2.4.4	Slot 6	12
2.4.5	Slot 7	13
2.5	FID Slots	14
2.5.1	Slot 0	14
2.5.2	Slot 1	15
2.5.3	Slot 2	16
3	Point Sources	17
A	Summary	18
A.1	Status	18
A.2	Comments	18

1 Front

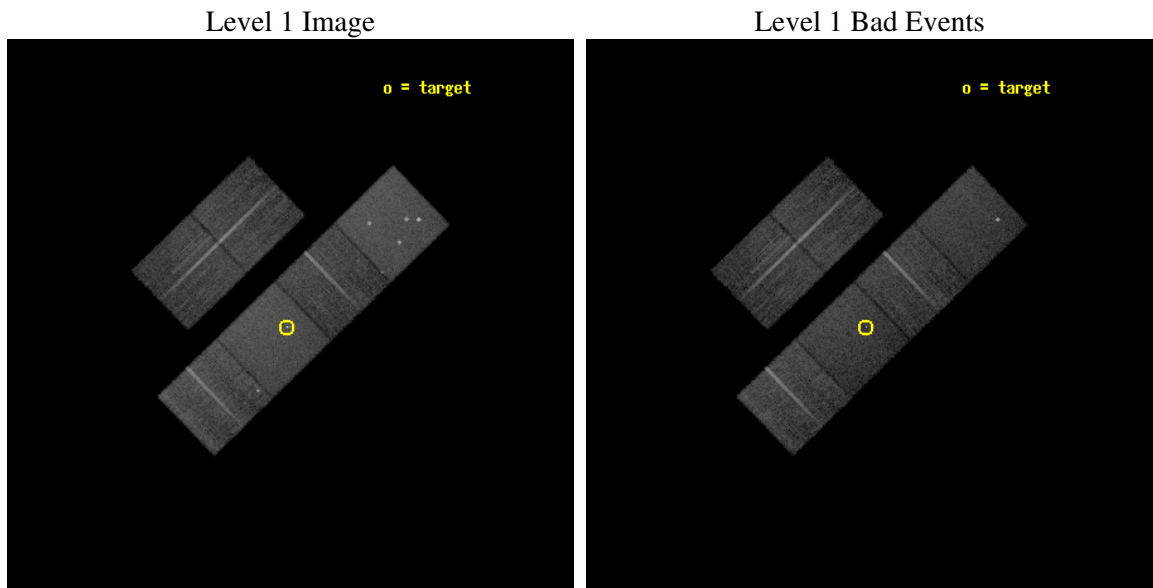
seq_num	700239
obs_id	1623
title	STUDIES OF RADIO JETS AND THE NARROW LINE REGIONS OF ACTIVE GALAXIES
observer	Prof. Andrew Wilson
object	3C303
dtcycle	0
cycle	P
ra_targ	220.761667
dec_targ	52.027028
ra_nom	220.75232945953
dec_nom	52.034992687731
roll_nom	135.89951146901
revision	2
ontime	15142.400014102
livetime	14950.657827465
ontime2	15142.400014102
ontime3	15142.400014102
ontime5	15142.400014102
ontime6	15142.400014102
ontime7	15142.400014102
ontime8	15142.400014102
l2events	148952



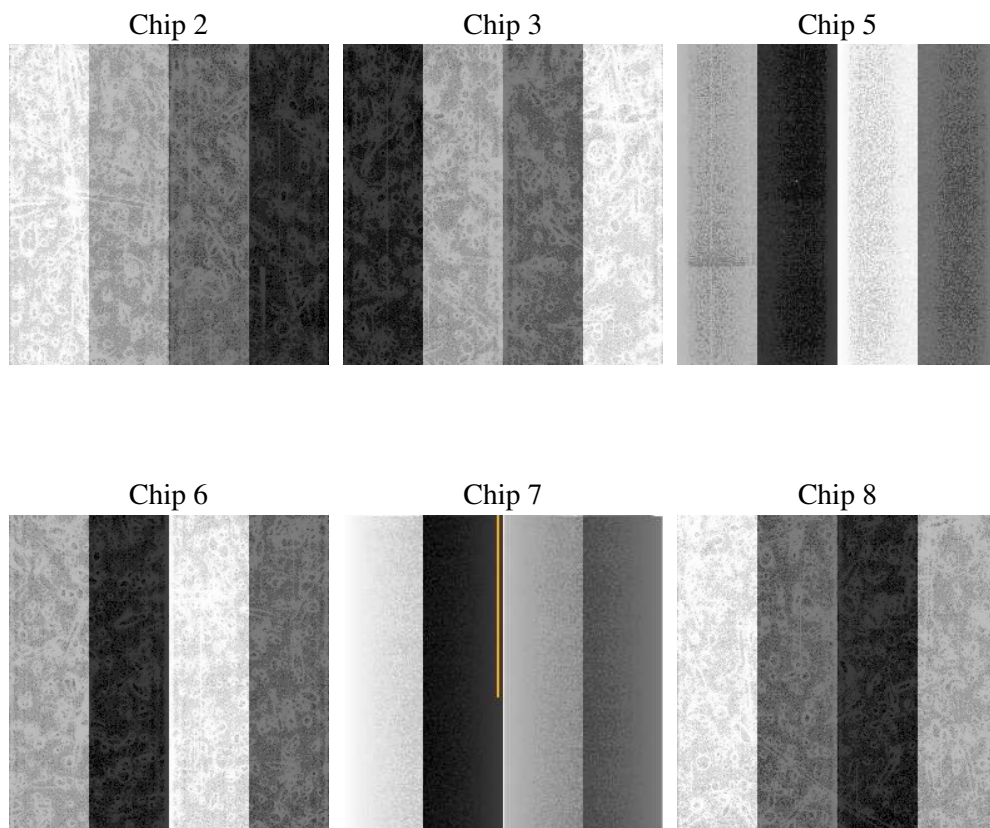
2 OBI

2.1 OBI

2.1.1 Images



2.1.2 Bias



2.1.3 Parameters

obi_num	0
ascdsver	7.6.9
caldsver	3.2.4
date	2006-11-15T21:05:57
revision	2

sched_exp_time	15000.000000
ontime	15193.807828486
ontime2	15193.807798564
ontime3	15193.807798564
ontime5	15193.807798564
ontime6	15193.807798564
ontime7	15193.807828486
ontime8	15193.807798564
l1events	707038

2.1.4 Events

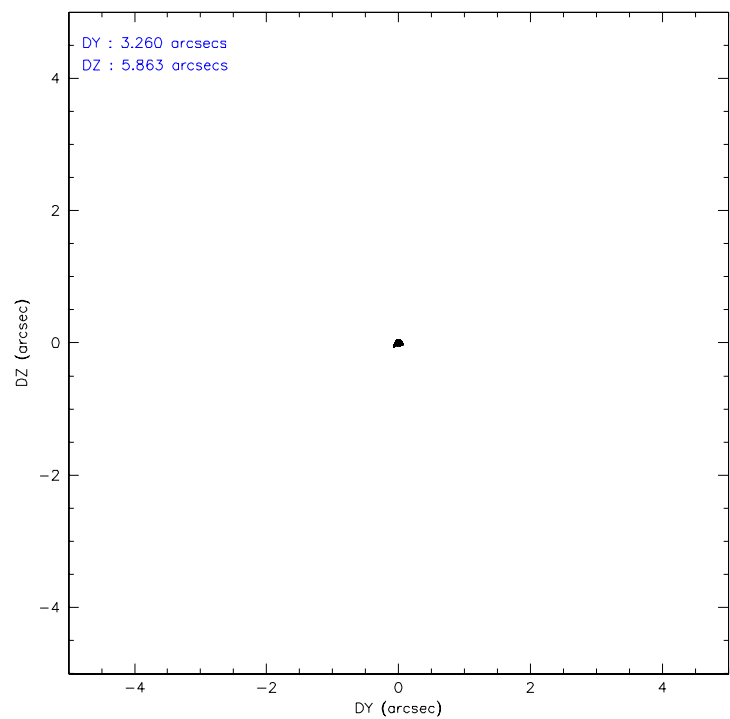
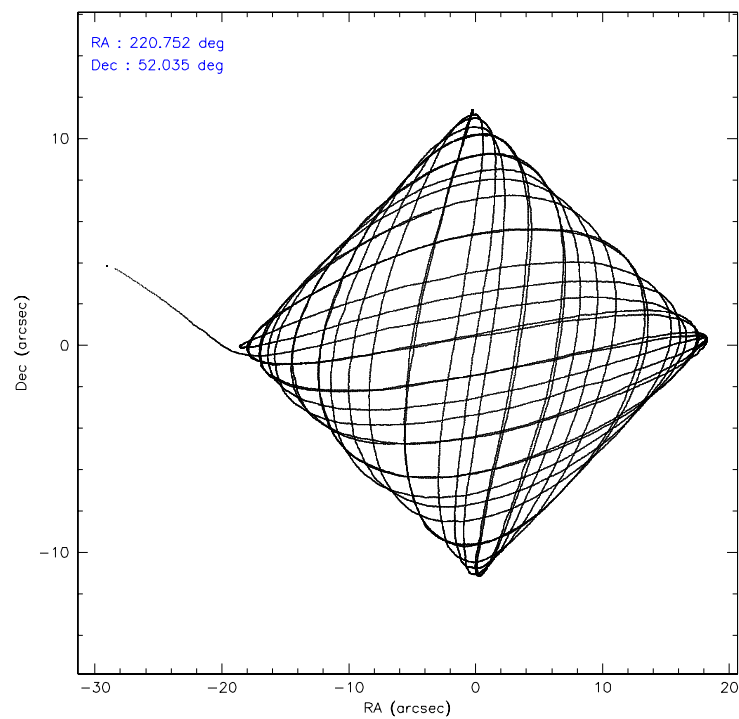
	ccd 2	ccd 3	ccd 5	ccd 6	ccd 7	ccd 8
level 1 events	101715	99686	143732	102120	132250	127535
rejected events	90804	88999	79666	90622	79403	102735
rejected %	89%	89%	55%	88%	60%	80%

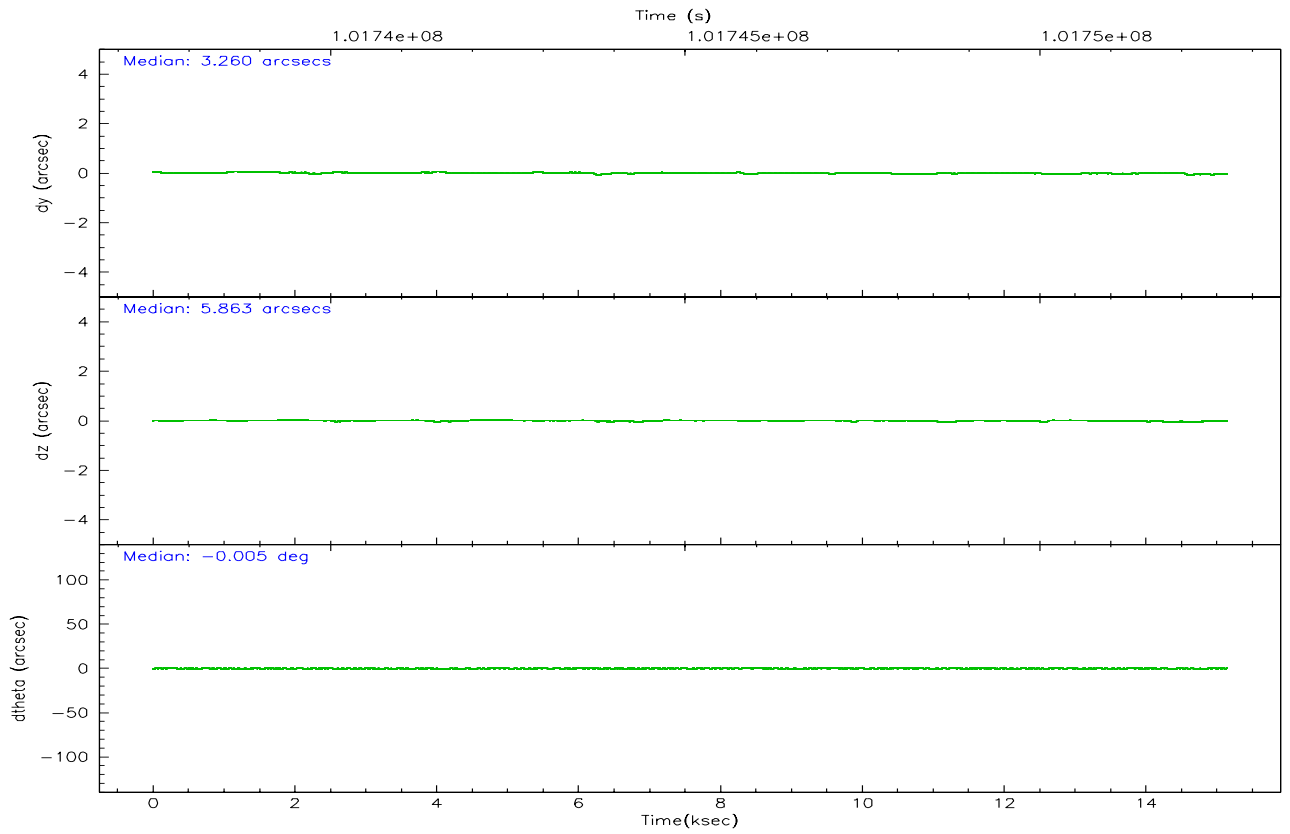
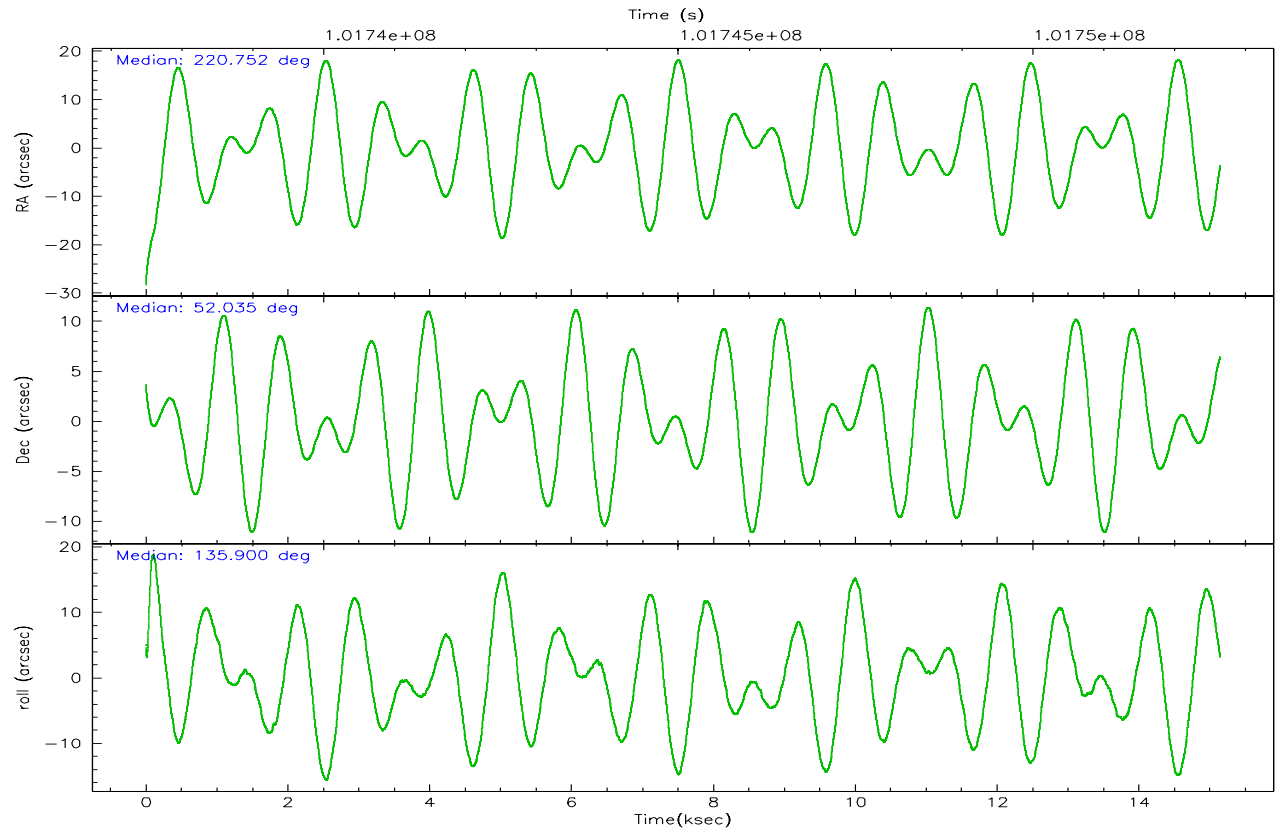
	ccd 2	ccd 3	ccd 5	ccd 6	ccd 7	ccd 8
grade 0 events	4653	4480	7684	4773	4226	8391
	4%	4%	5%	4%	3%	6%
grade 1 events	50	46	132	54	163	72
	0%	0%	0%	0%	0%	0%
grade 2 events	2365	2152	19314	2303	12954	5285
	2%	2%	13%	2%	9%	4%
grade 3 events	972	1060	1556	1136	3037	2491
	0%	1%	1%	1%	2%	1%
grade 4 events	1035	1132	1342	1119	2957	2359
	1%	1%	0%	1%	2%	1%
grade 5 events	3440	3822	7765	4181	8949	5322
	3%	3%	5%	4%	6%	4%
grade 6 events	1922	1904	34405	2224	29835	6362
	1%	1%	23%	2%	22%	4%
grade 7 events	87278	85090	71534	86330	70129	97253
	85%	85%	49%	84%	53%	76%

2.2 Compared Parameters

Parameter	Planned	Actual	Parameter	Planned	Actual
Instrument	ACIS	ACIS	Obspar format version number	6	6
Detector	ACIS-235678	ACIS-235678	Obspar file type	PREDICTED	ACTUAL
Grating	NONE	NONE	Obspar update status	NONE	UPDATED
Data mode	VFAINT	VFAINT	Number of optional ACIS chips dropped	0	0
Observation mode	POINTING	POINTING	On-chip summing requested	N	N
Pointing RA	220.795534	220.7523294595319	Subarray requested	NONE	NONE
Pointing Dec	52.028597	52.03499268773117	Alternating exposures requested	N	N
Pointing Roll	135.708842	135.8995114690088	Primary exposure time	0.000000	3.2
SIM focus pos (mm)	-0.684267	-0.6828225247311905			
SIM defocus (mm)	0	0.001444936568705701			
SIM translation stage pos (mm)	-190.132523	-190.1400660498719			
SIM translation stage offset (mm)	0	0.00754346686406393			
Observation start time	101737642.184000	101736524.09758			
Observation start date	2001-03-23T12:26:18	2001-03-23T12:08:44			
Observation end time	101752642.184000	101753502.71074			
Observation end date	2001-03-23T16:36:18	2001-03-23T16:51:42			
Read mode	TIMED	TIMED			

2.3 Aspect



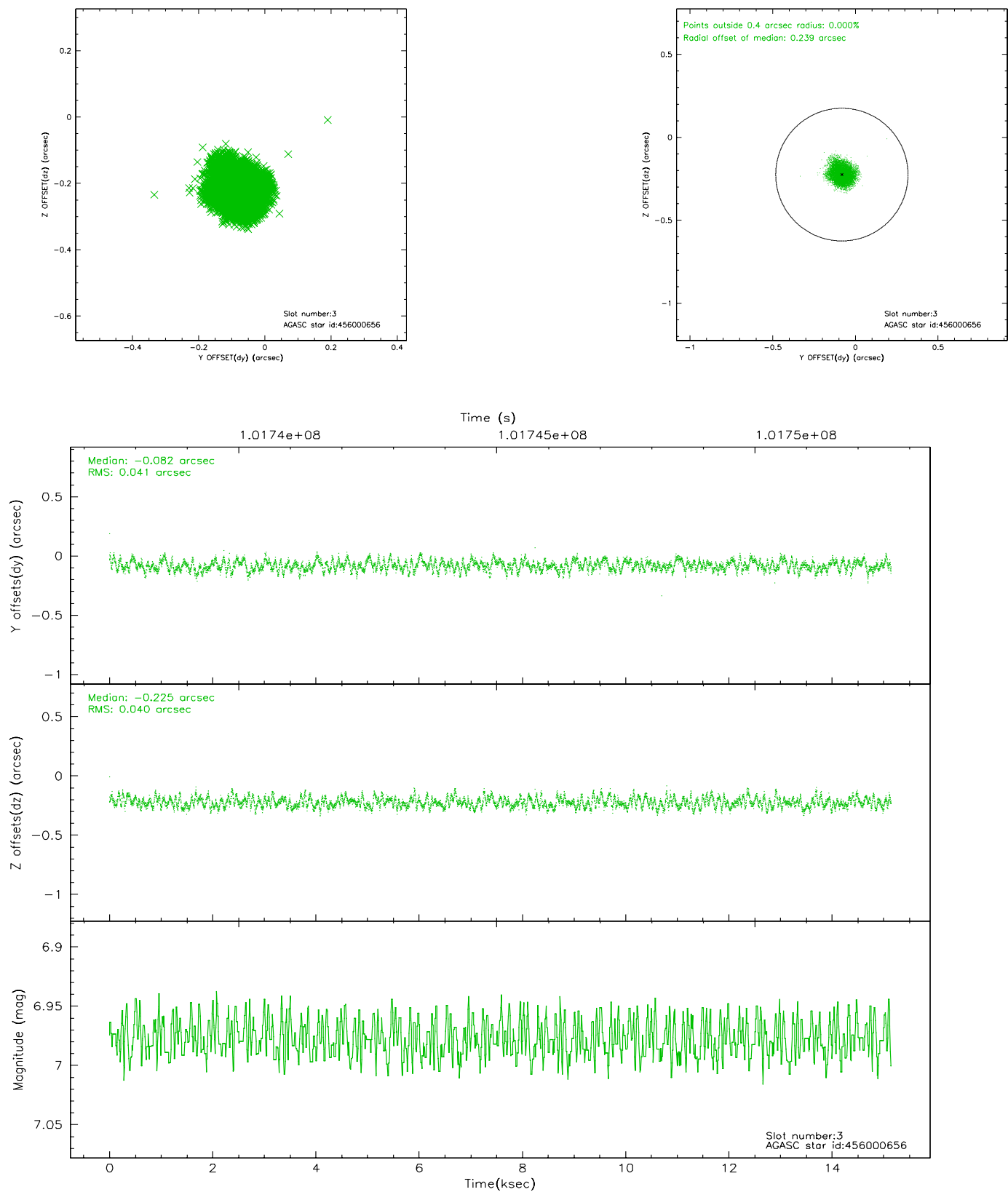


Slot Statistics

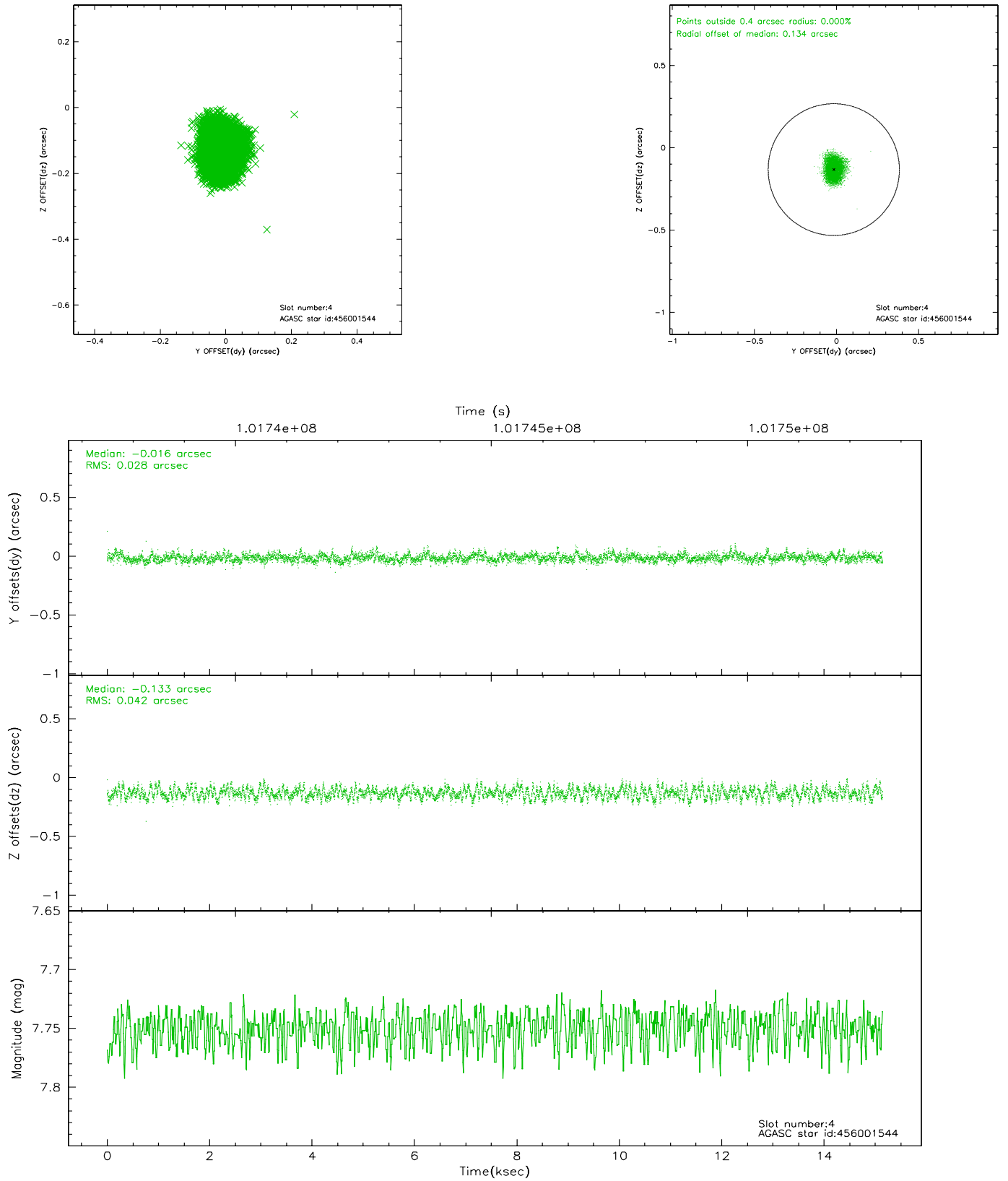
slot	status	id	mag	n_pts	med_dy	med_dz	dr1	dr2	ra	dec	mean_y	mean_z
0	FID	ACIS-S-2	7.12	3695	-0.014	0.031	0.006	0.011	0.000000	0.000000	-755.88	-1726.98
1	FID	ACIS-S-4	7.20	3695	-0.068	-0.001	0.005	0.009	0.000000	0.000000	2157.16	181.23
2	FID	ACIS-S-5	7.24	3695	0.051	-0.021	0.006	0.011	0.000000	0.000000	-1808.32	175.13
3	GUIDE	456000656	6.98	7390	-0.082	-0.225	0.062	0.094	220.259574	52.235799	1369.15	287.23
4	GUIDE	456001544	7.75	7390	-0.016	-0.133	0.054	0.087	220.502950	52.005319	406.22	511.03
5	GUIDE	456007360	8.30	7390	0.027	-0.136	0.056	0.091	220.843042	51.918110	-353.47	210.20
6	GUIDE	505950048	8.62	7390	-0.012	0.307	0.074	0.118	220.336085	52.647026	2274.67	-895.55
7	GUIDE	456132624	8.89	7389	0.080	0.190	0.060	0.096	221.490564	51.626542	-2117.46	-54.54

2.4 Star Slots

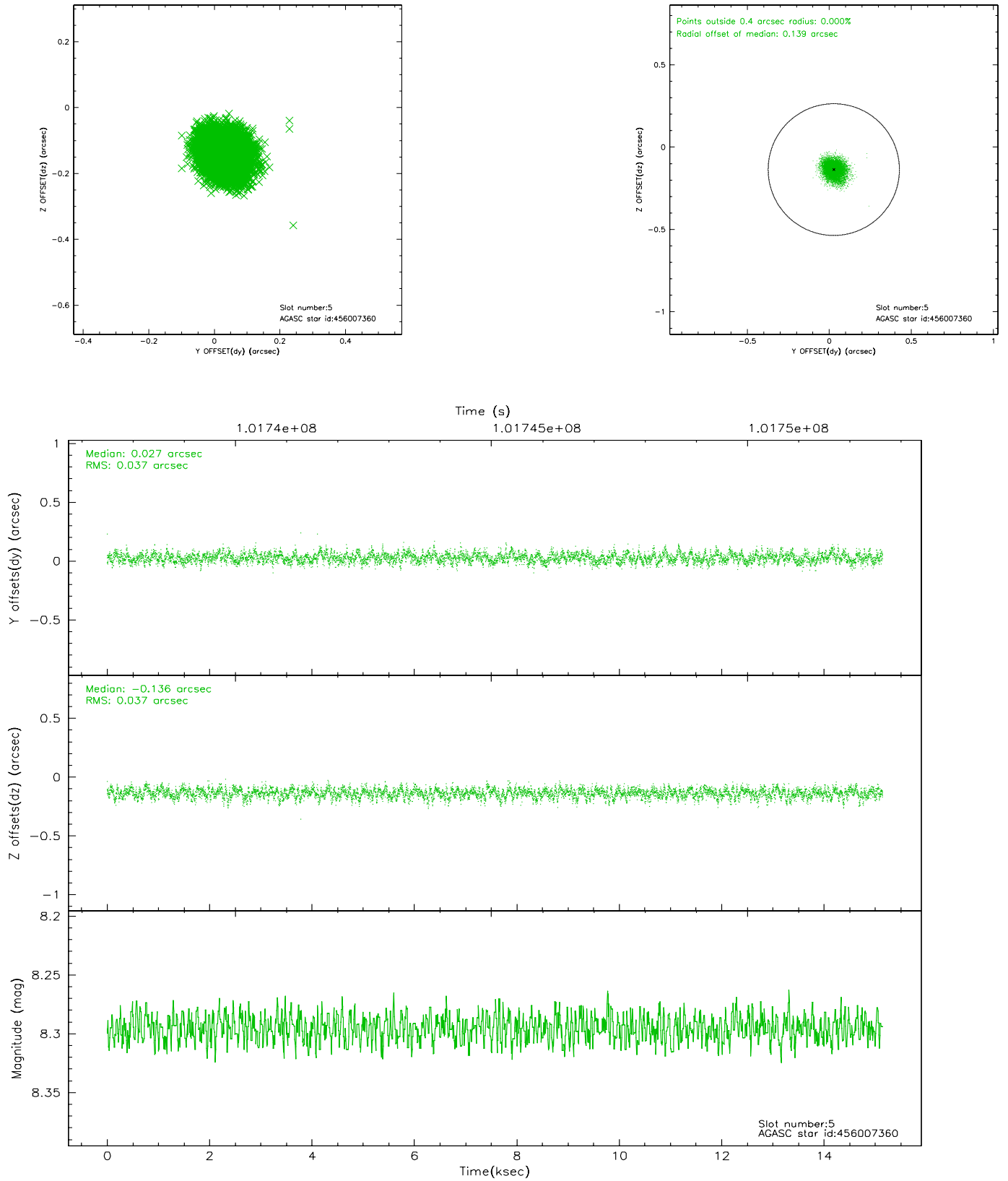
2.4.1 Slot 3



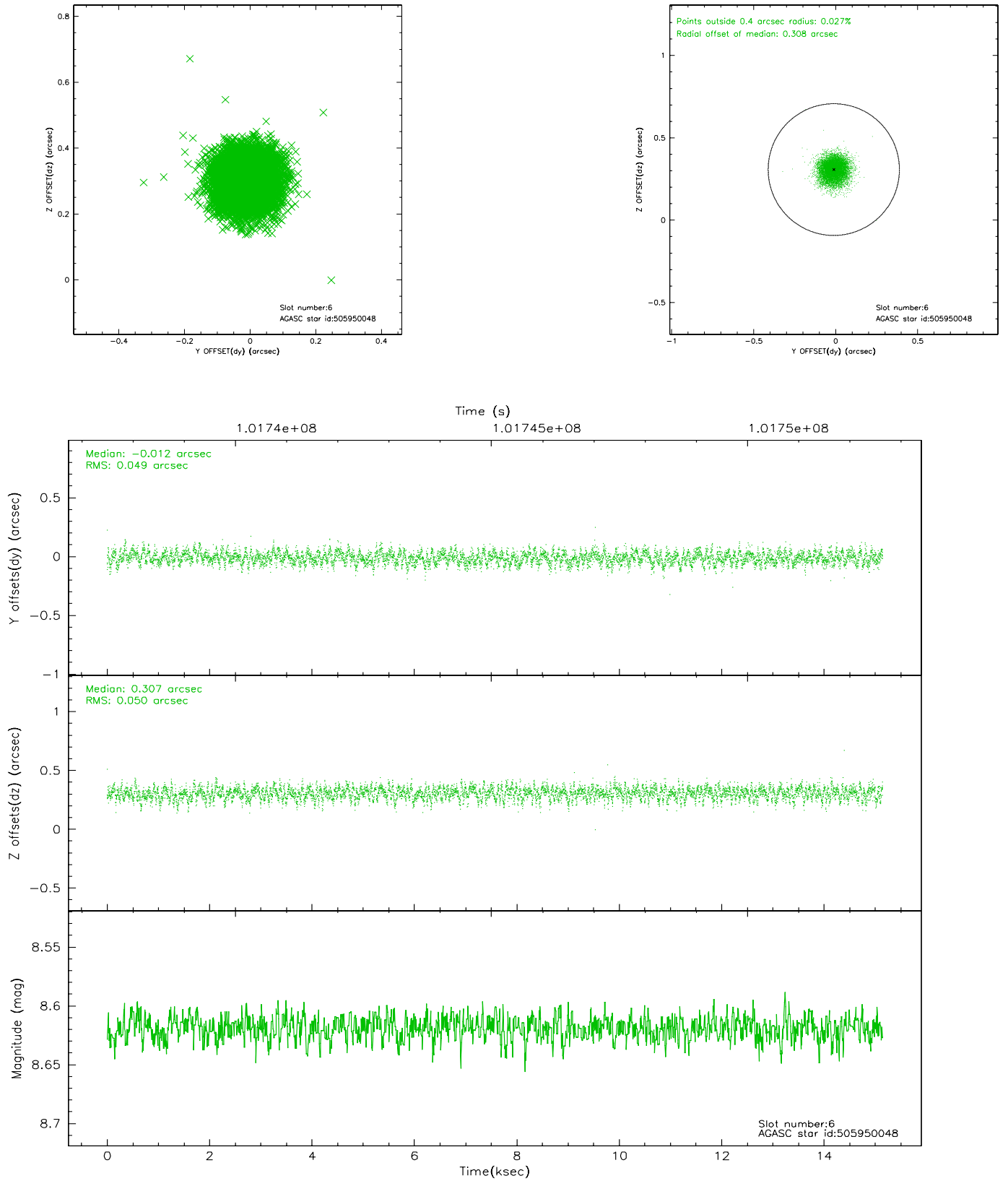
2.4.2 Slot 4



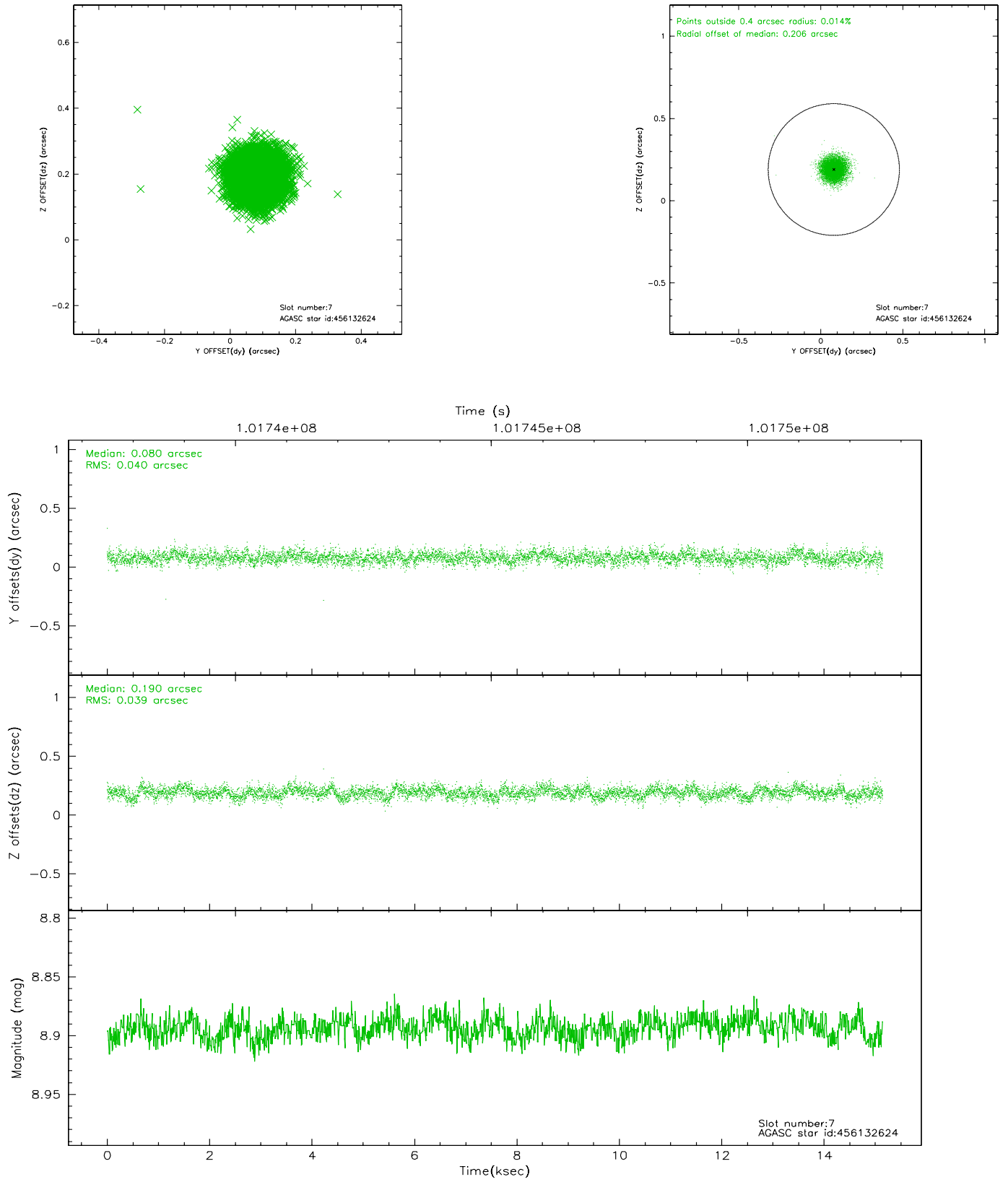
2.4.3 Slot 5



2.4.4 Slot 6

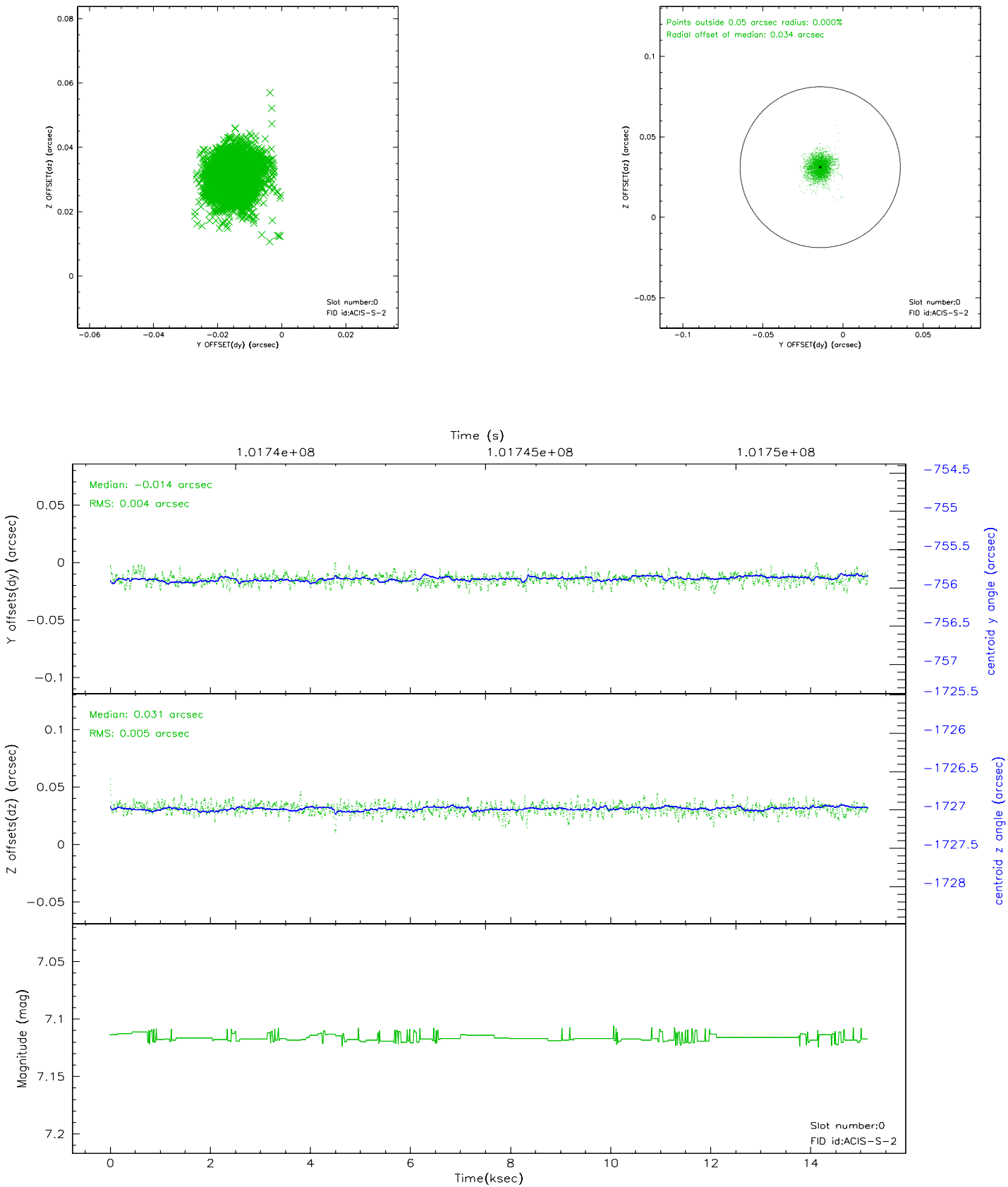


2.4.5 Slot 7

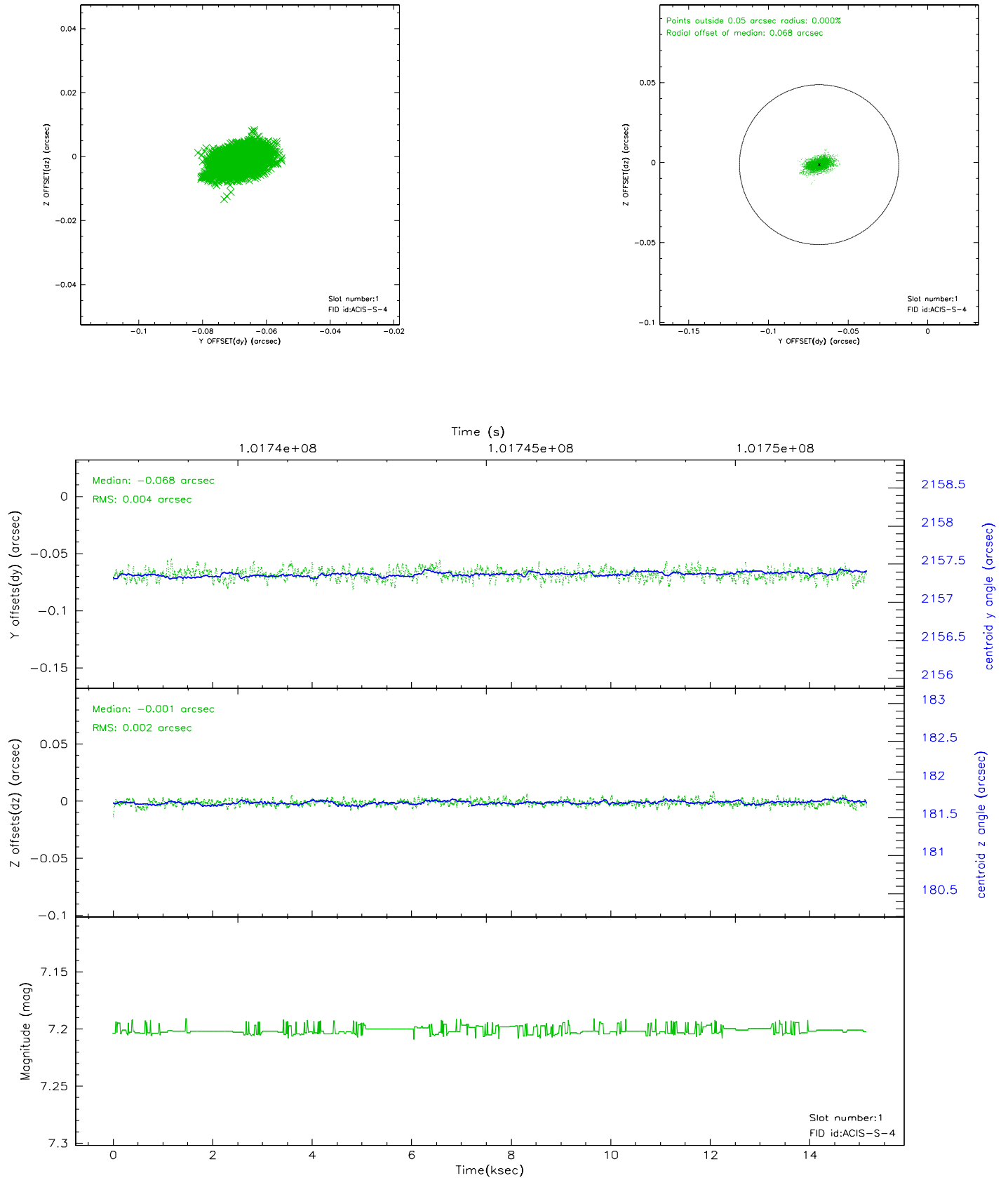


2.5 FID Slots

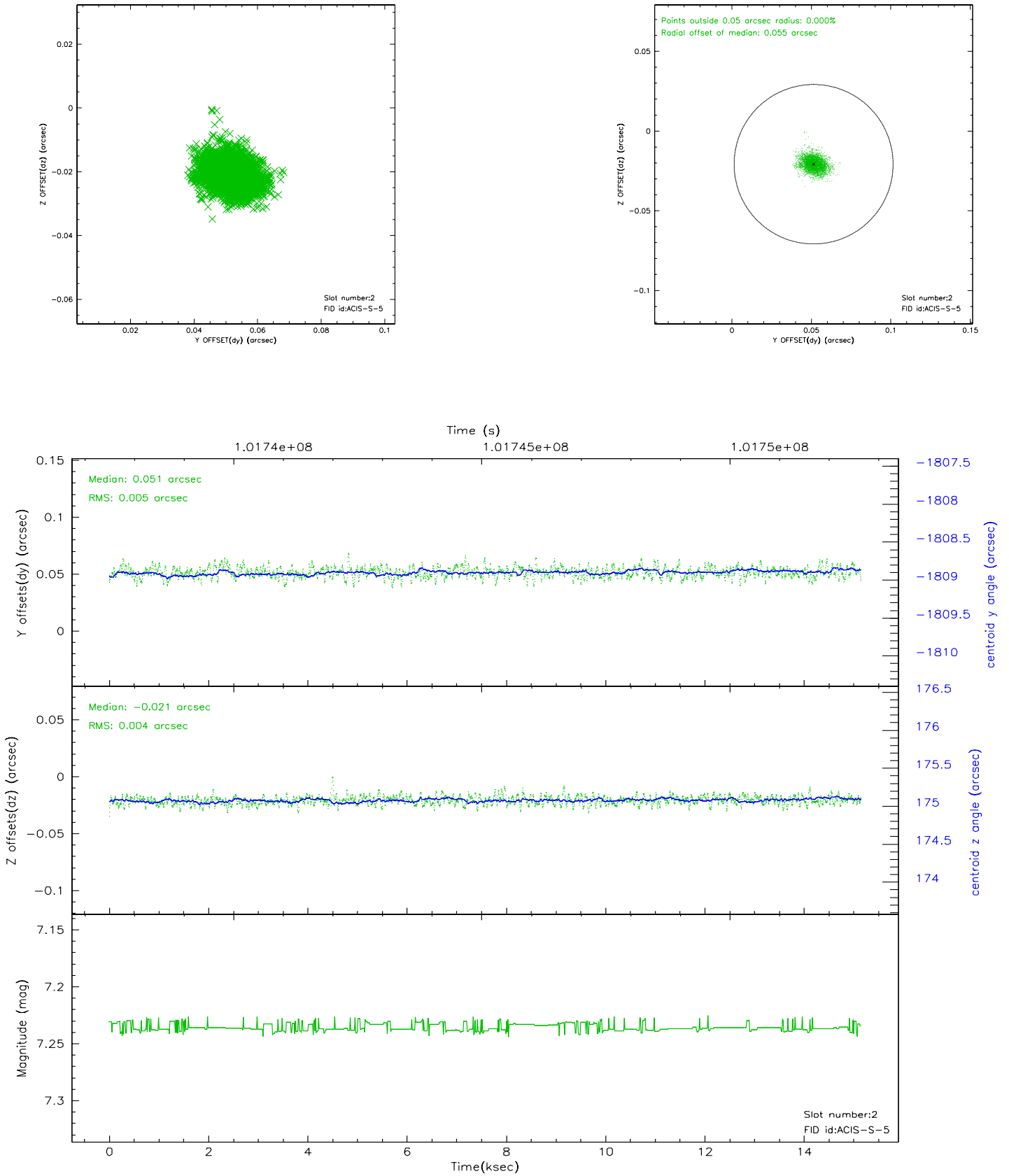
2.5.1 Slot 0



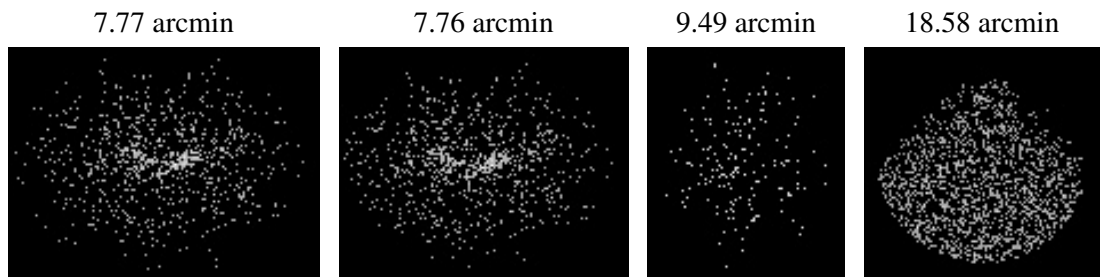
2.5.2 Slot 1



2.5.3 Slot 2



3 Point Sources



A Summary

A.1 Status

V&V Scientist	Jen Lauer
V&V Date (YYYY-MM-DD)	2006.11.16
V&V Edition	1
V&V Disposition and Status	OK
V&V Charge Time	15.1

A.2 Comments