

V&V Reference Report

L2 ASCDS Version : 7.6.10

Observation 1592 - L2 Version 001
Chandra X-Ray Center

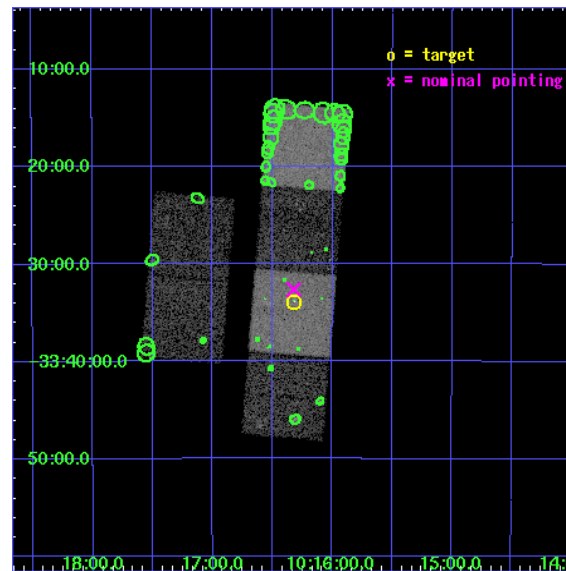
L2 Processing Date : Jun 14 2007

Contents

1	Front	2
2	OBI	3
2.1	OBI	3
2.1.1	Images	3
2.1.2	Bias	3
2.1.3	Parameters	4
2.1.4	Events	4
2.2	Compared Parameters	5
2.3	Aspect	6
2.4	Star Slots	9
2.4.1	Slot 3	9
2.4.2	Slot 4	10
2.4.3	Slot 5	11
2.4.4	Slot 6	12
2.4.5	Slot 7	13
2.5	FID Slots	14
2.5.1	Slot 0	14
2.5.2	Slot 1	15
2.5.3	Slot 2	16
3	Point Sources	17
A	Summary	18
A.1	Status	18
A.2	Comments	18

1 Front

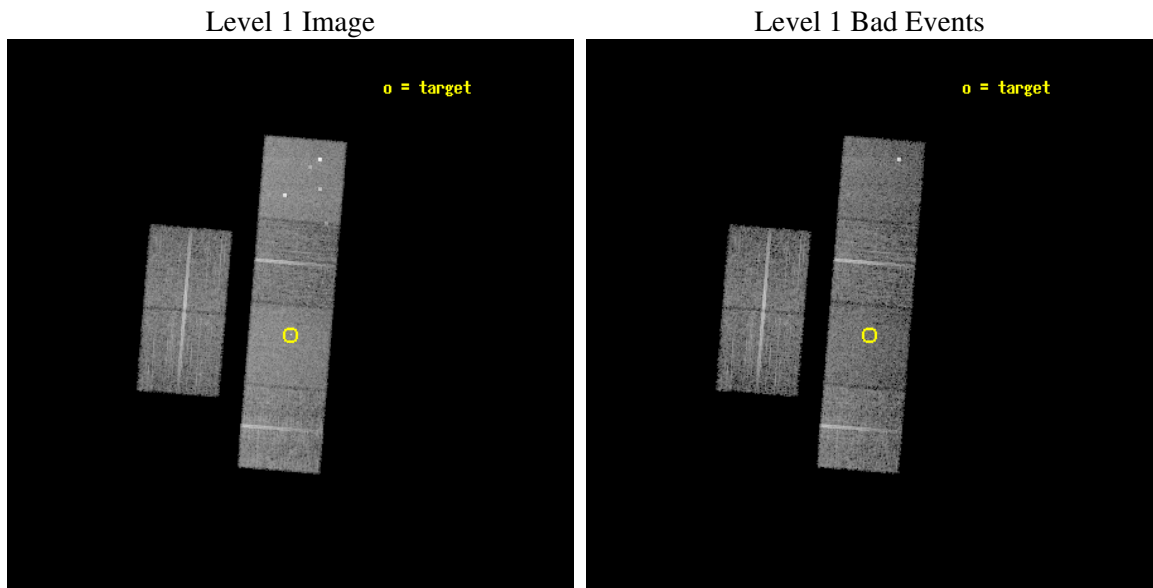
seq_num	700208
obs_id	1592
title	SCATTERED EMISSION FROM THE SEYFERT 2 GALAXY IC2560
observer	Professor Andrew Fabian
object	IC2560
dtcycle	0
cycle	P
ra_targ	154.08
dec_targ	-33.564722
ra_nom	154.0801416941
dec_nom	-33.543784880184
roll_nom	94.701727449025
revision	2
ontime	9952.0000092685
livetime	9825.9817927762
ontime2	9952.0000092685
ontime3	9952.0000092685
ontime5	9952.0000092685
ontime6	9952.0000092685
ontime7	9952.0000092685
ontime8	9952.0000092685
l2events	91256



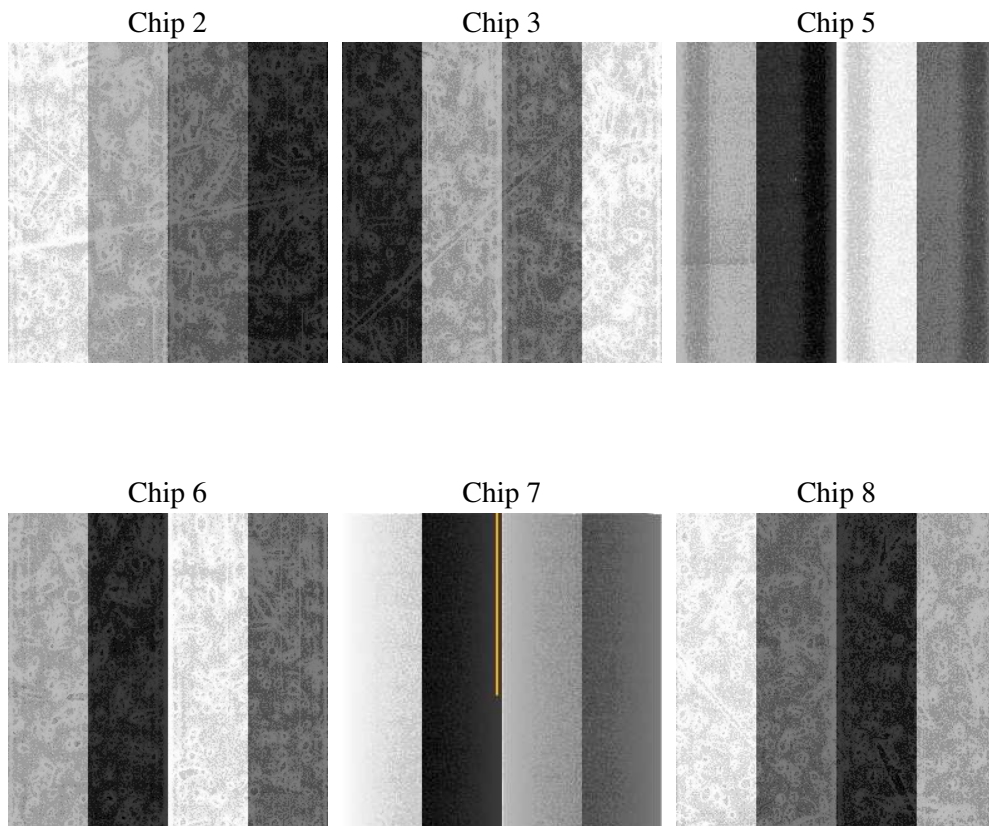
2 OBI

2.1 OBI

2.1.1 Images



2.1.2 Bias



2.1.3 Parameters

obi_num	0
ascdsver	7.6.10
caldbver	3.4.0
date	2007-06-14T06:32:46
revision	2

sched_exp_time	10000.000000
ontime	9952.0000092685
ontime2	9952.0000092685
ontime3	9952.0000092685
ontime5	9952.0000092685
ontime6	9952.0000092685
ontime7	9952.0000092685
ontime8	9952.0000092685
l1events	404079

2.1.4 Events

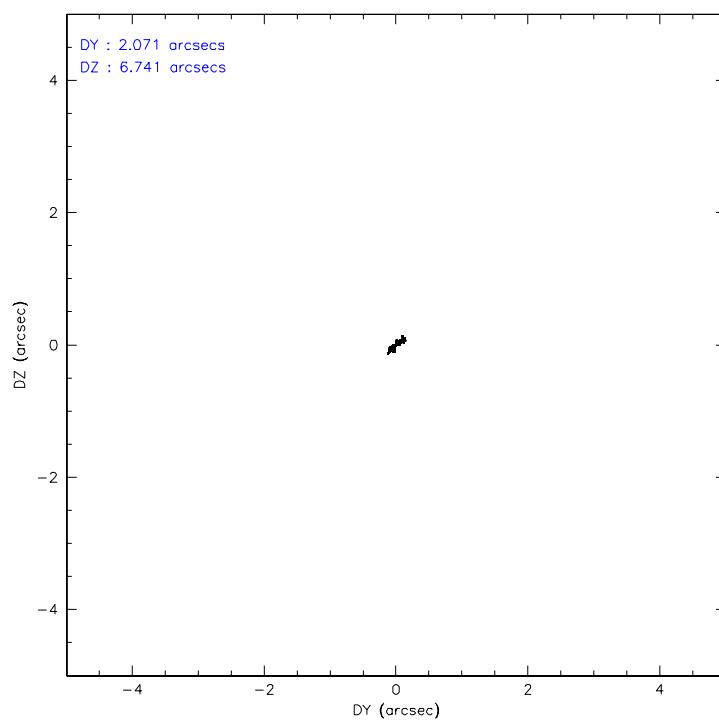
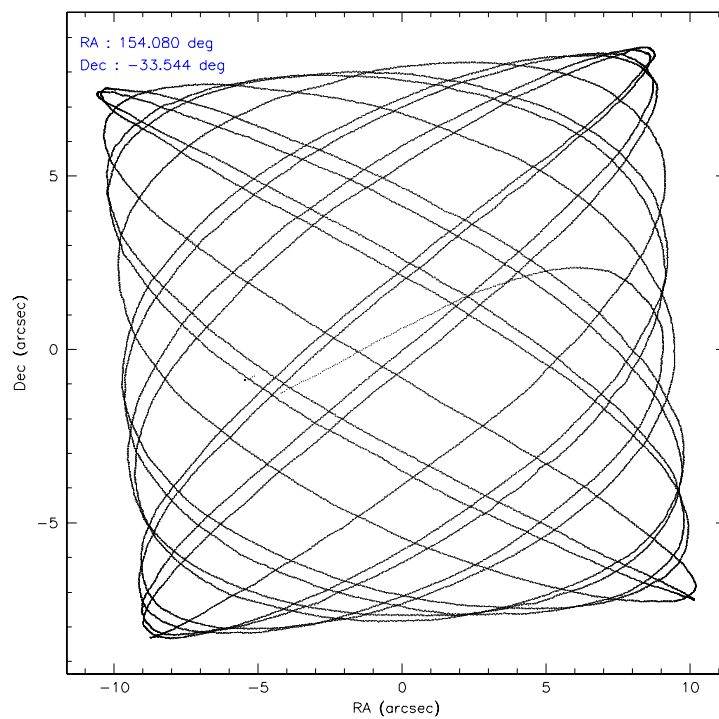
	ccd 2	ccd 3	ccd 5	ccd 6	ccd 7	ccd 8
level 1 events	58932	57122	83946	57402	74258	72419
rejected events	52145	50309	44294	50057	42106	57232
rejected %	88%	88%	52%	87%	56%	79%

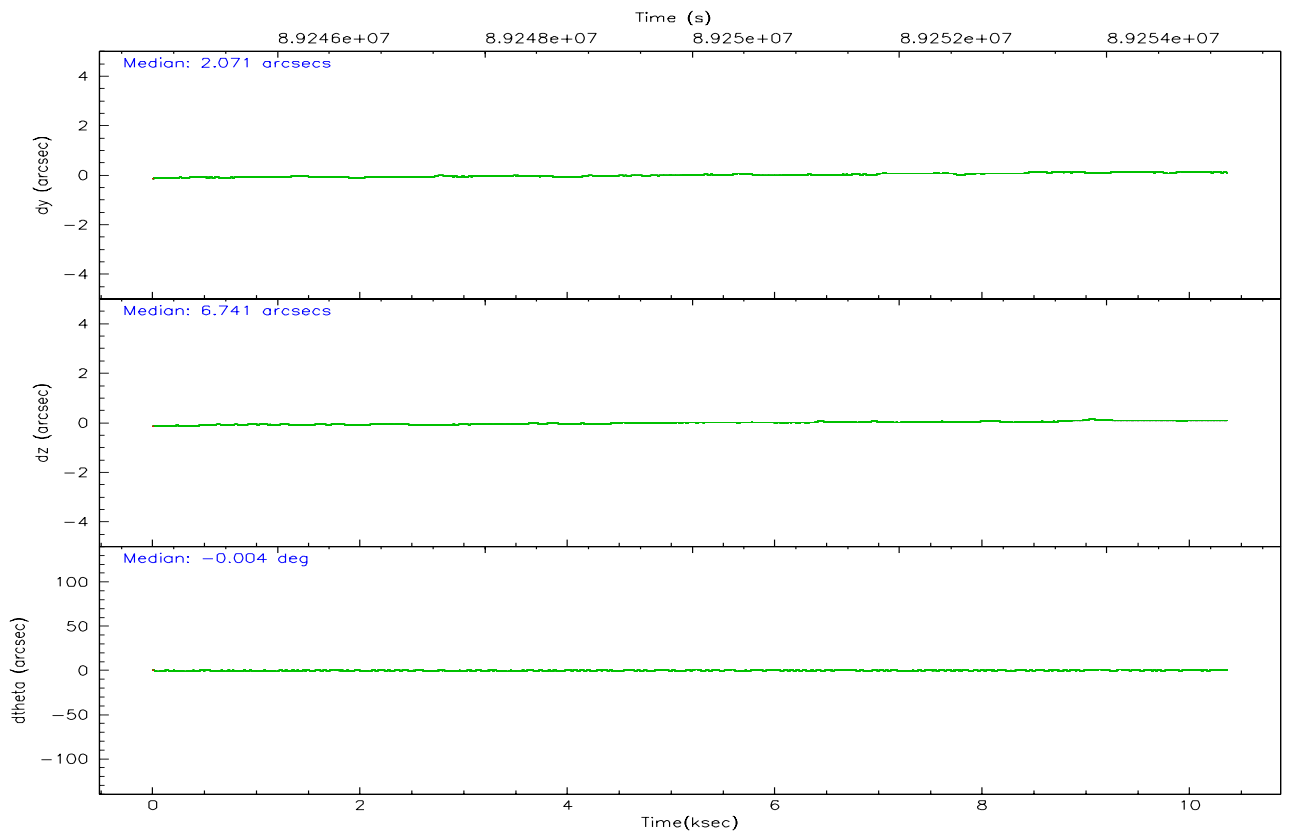
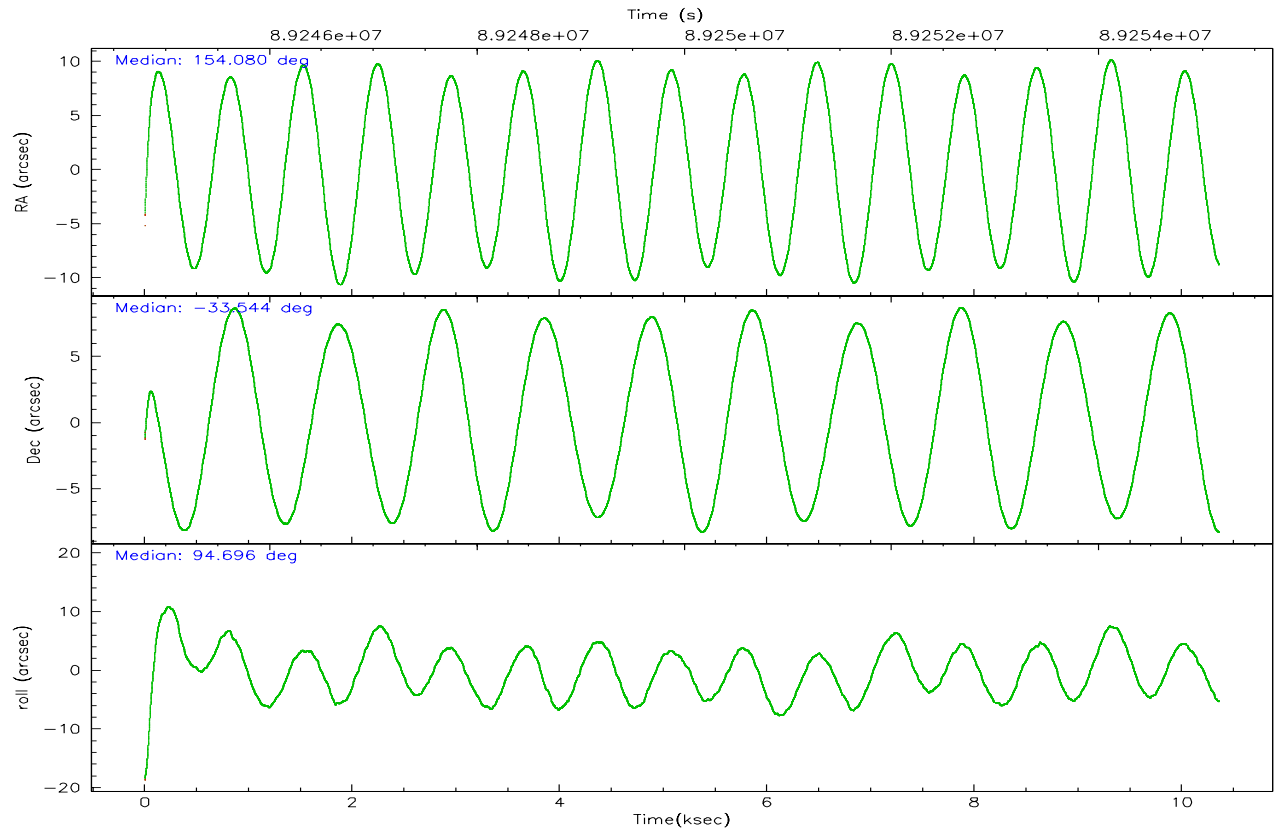
	ccd 2	ccd 3	ccd 5	ccd 6	ccd 7	ccd 8
grade 0 events	3047	3063	6235	3249	3723	5253
	5%	5%	7%	5%	5%	7%
grade 1 events	19	23	139	18	75	50
	0%	0%	0%	0%	0%	0%
grade 2 events	1419	1309	11521	1398	6452	3134
	2%	2%	13%	2%	8%	4%
grade 3 events	620	631	1670	686	2947	1684
	1%	1%	1%	1%	3%	2%
grade 4 events	572	690	1669	656	2930	1536
	0%	1%	1%	1%	3%	2%
grade 5 events	1964	2173	6678	2380	6780	2922
	3%	3%	7%	4%	9%	4%
grade 6 events	1134	1126	18594	1364	16121	3589
	1%	1%	22%	2%	21%	4%
grade 7 events	50157	48107	37440	47651	35230	54251
	85%	84%	44%	83%	47%	74%

2.2 Compared Parameters

Parameter	Planned	Actual	Parameter	Planned	Actual
Instrument	ACIS	ACIS	Obspar format version number	6	6
Detector	ACIS-235678	ACIS-235678	Obspar file type	PREDICTED	ACTUAL
Grating	NONE	NONE	Obspar update status	NONE	UPDATED
Data mode	FAINT	FAINT	Number of optional ACIS chips dropped	0	0
Observation mode	POINTING	POINTING	On-chip summing requested	N	N
Pointing RA	154.098998	154.0801416941032	Subarray requested	NONE	NONE
Pointing Dec	-33.566145	-33.54378488018449	Alternating exposures requested	N	N
Pointing Roll	94.555545	94.70172744902493	Primary exposure time	0.000000	3.2
SIM focus pos (mm)	-0.684267	-0.6828225247311905			
SIM defocus (mm)	0	0.001444936568705701			
SIM translation stage pos (mm)	-190.132523	-190.1400660498719			
SIM translation stage offset (mm)	0	0.00754346686406393			
Observation start time	89245108.184000	89244072.69344699			
Observation start date	2000-10-29T22:17:24	2000-10-29T22:01:12			
Observation end time	89255108.184000	89256062.1189			
Observation end date	2000-10-30T01:04:04	2000-10-30T01:21:02			
Read mode	TIMED	TIMED			

2.3 Aspect



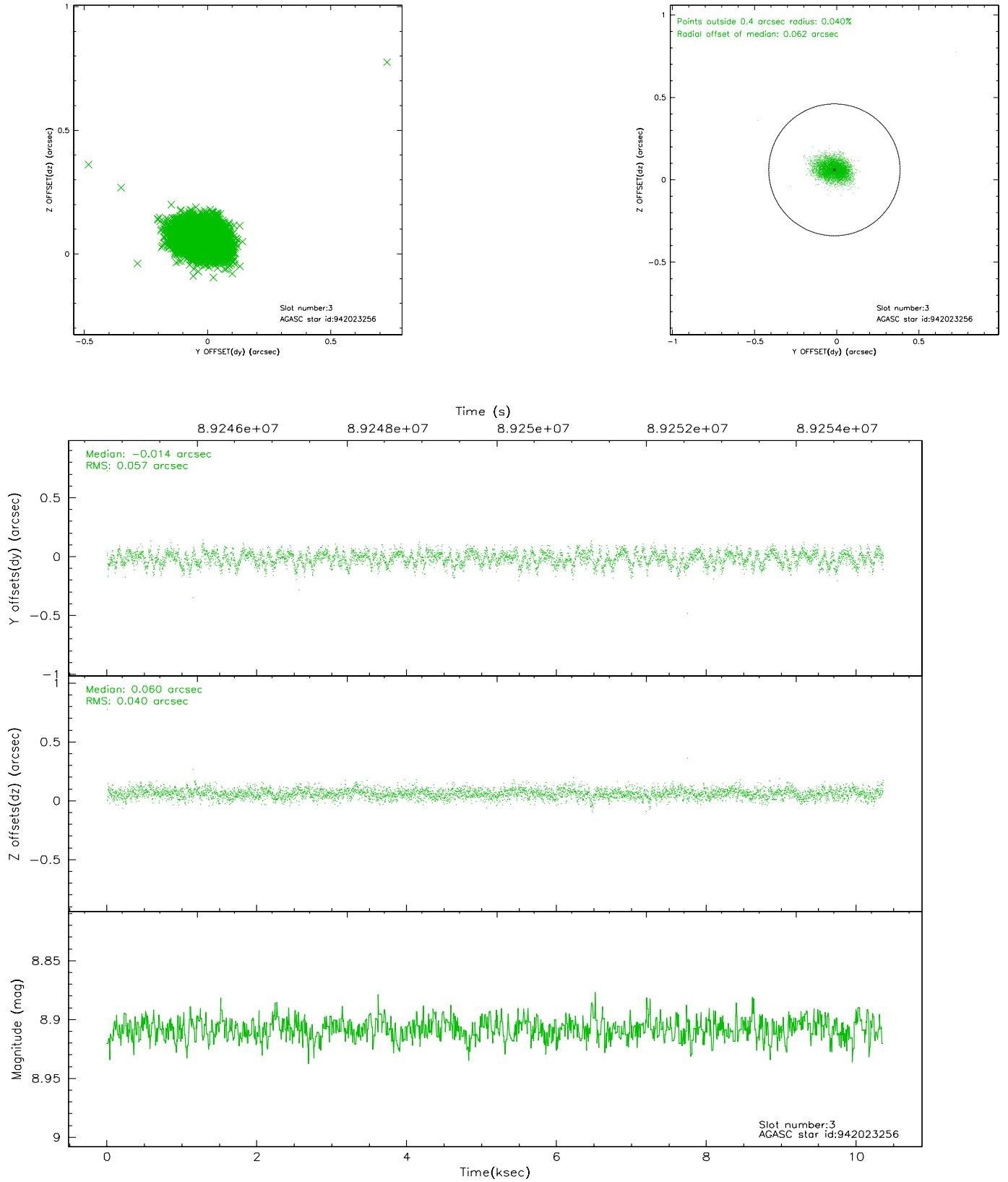


Slot Statistics

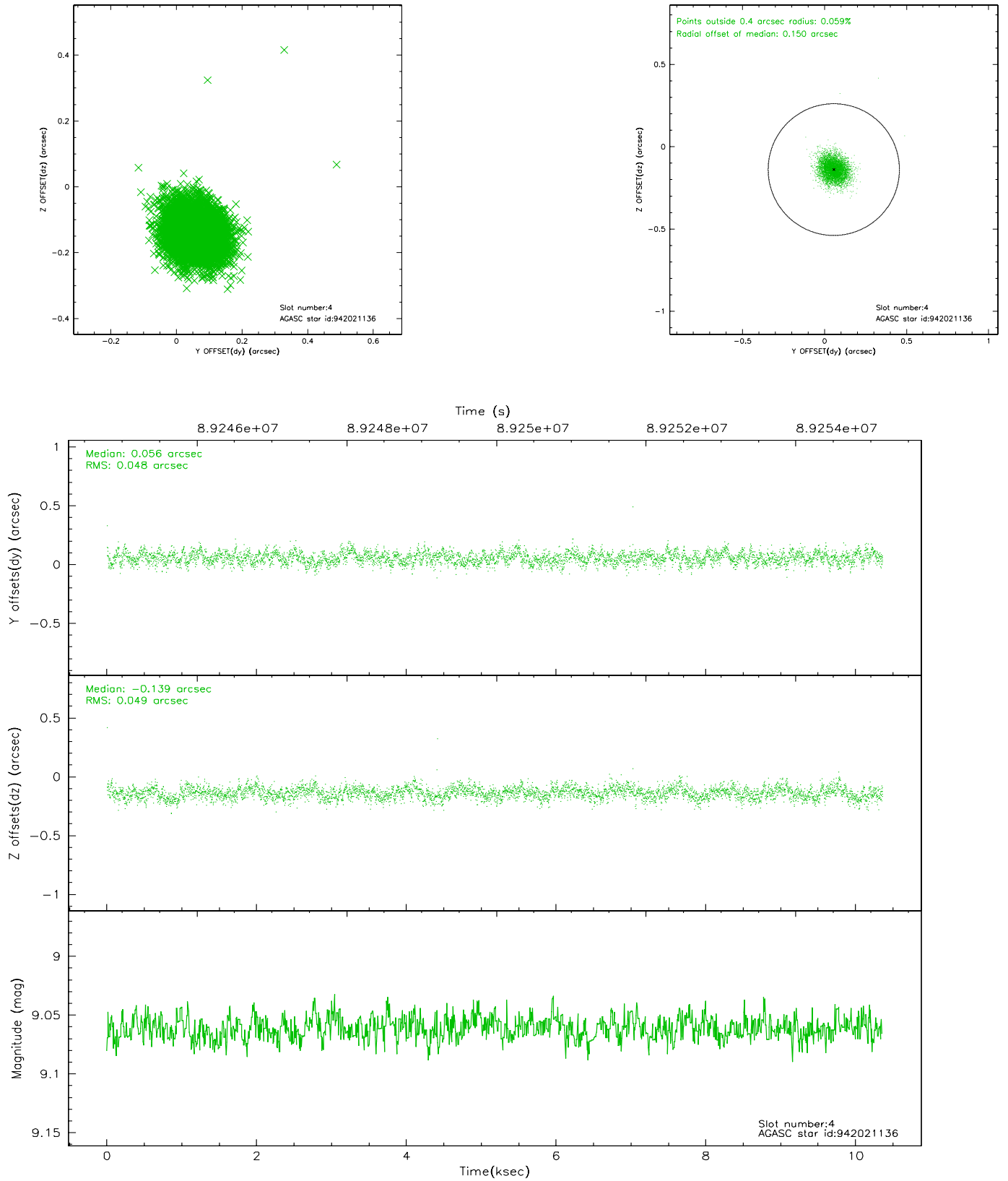
slot	status	id	mag	n_pts	med_dy	med_dz	dr1	dr2	ra	dec	mean_y	mean_z
0	FID	ACIS-S-2	7.11	2528	-0.016	0.028	0.007	0.011	0.000000	0.000000	-754.71	-1727.86
1	FID	ACIS-S-4	7.20	2528	-0.074	0.000	0.005	0.009	0.000000	0.000000	2158.28	180.07
2	FID	ACIS-S-5	7.23	2527	0.058	-0.019	0.006	0.011	0.000000	0.000000	-1806.82	174.30
3	GUIDE	942023256	8.91	5053	-0.014	0.060	0.072	0.118	154.727246	-32.973248	1971.75	-2059.85
4	GUIDE	942021136	9.06	5050	0.056	-0.139	0.072	0.117	153.766865	-33.398932	678.31	947.34
5	GUIDE	942024568	9.17	5051	-0.027	0.025	0.074	0.121	154.189528	-33.061142	1790.81	-415.84
6	GUIDE	942019744	9.18	5051	-0.005	0.026	0.093	0.152	154.719562	-33.245703	996.80	-1953.17
7	GUIDE	942017648	9.47	5051	-0.010	0.029	0.076	0.127	154.614926	-33.275707	915.68	-1630.48

2.4 Star Slots

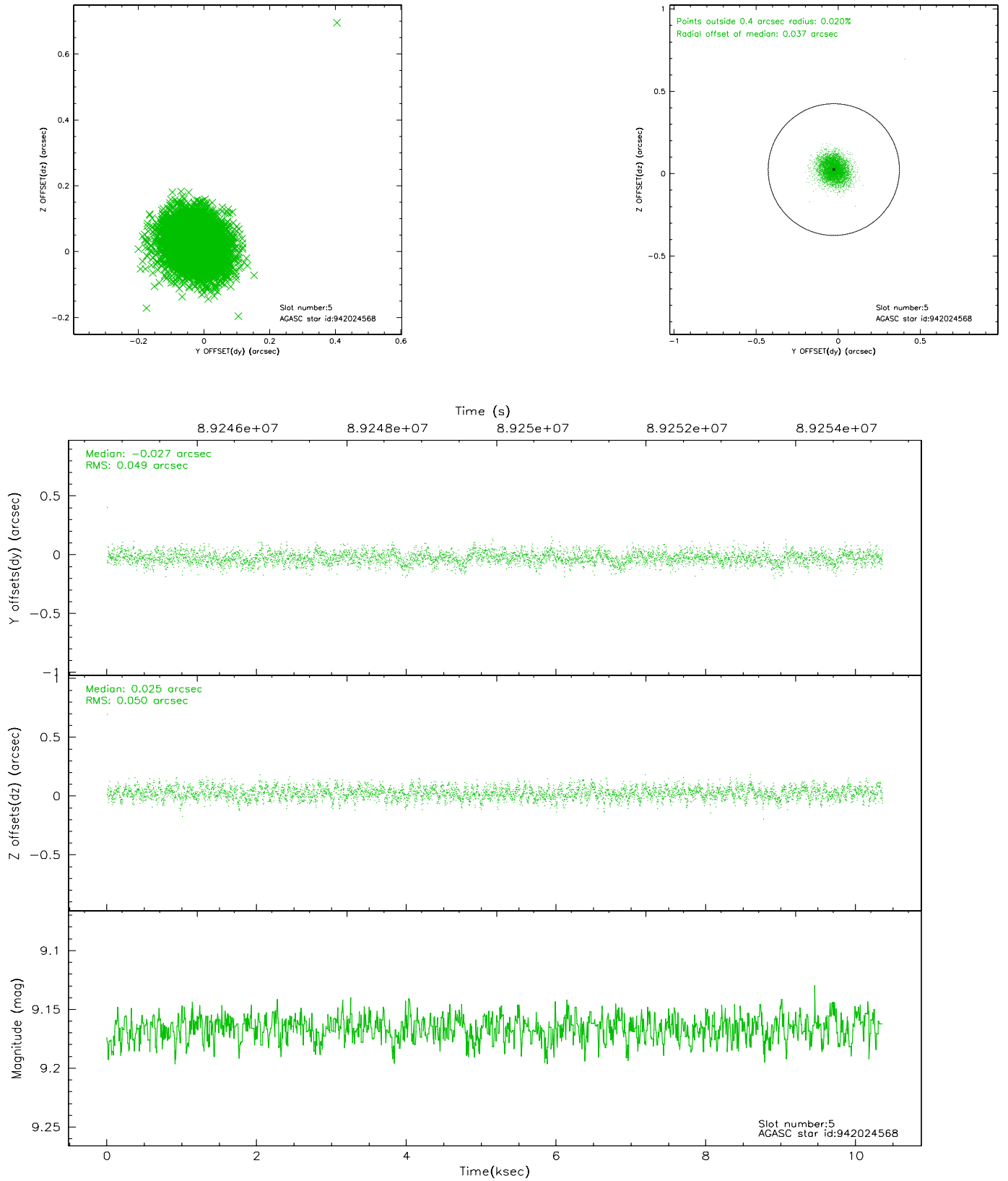
2.4.1 Slot 3



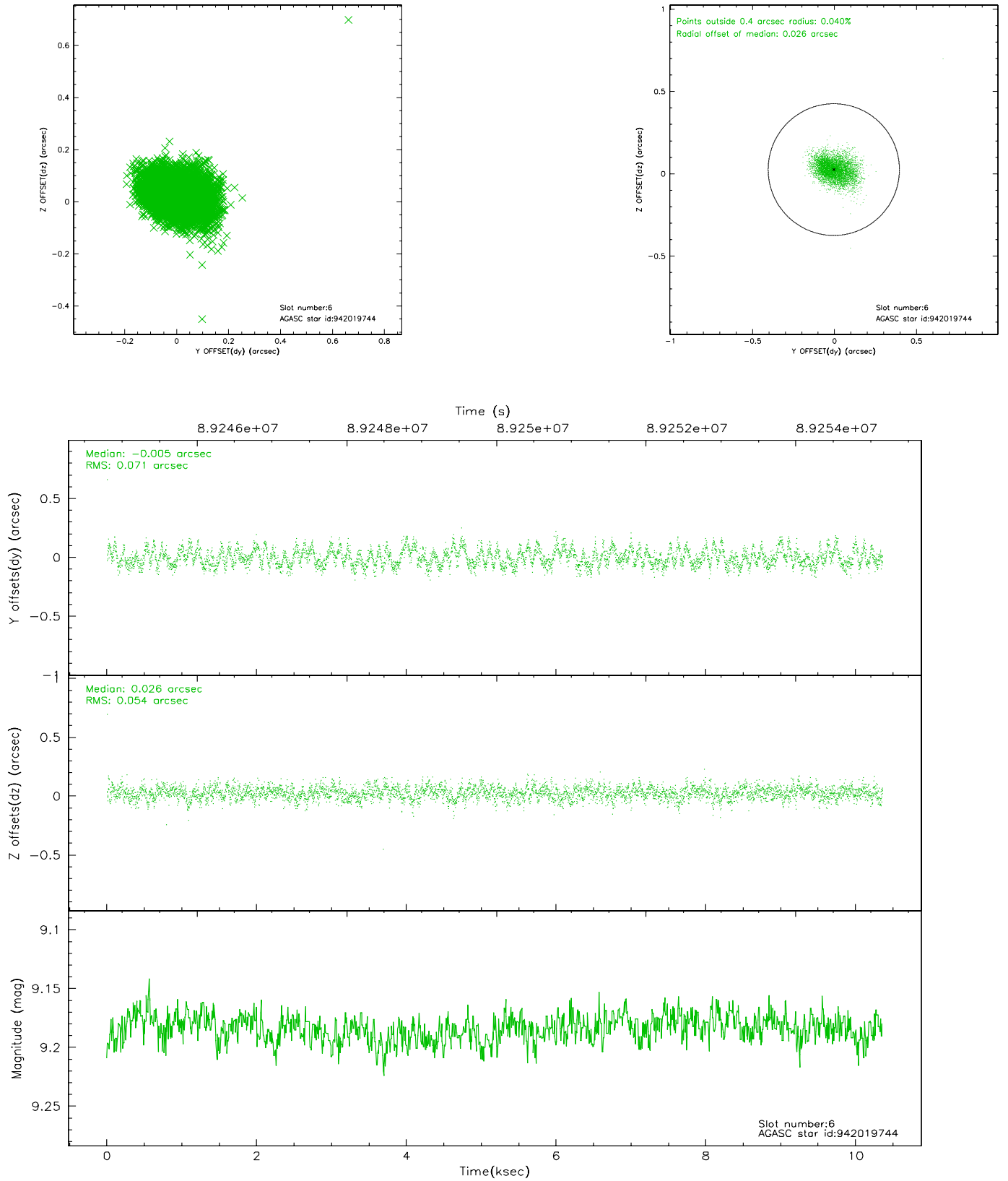
2.4.2 Slot 4



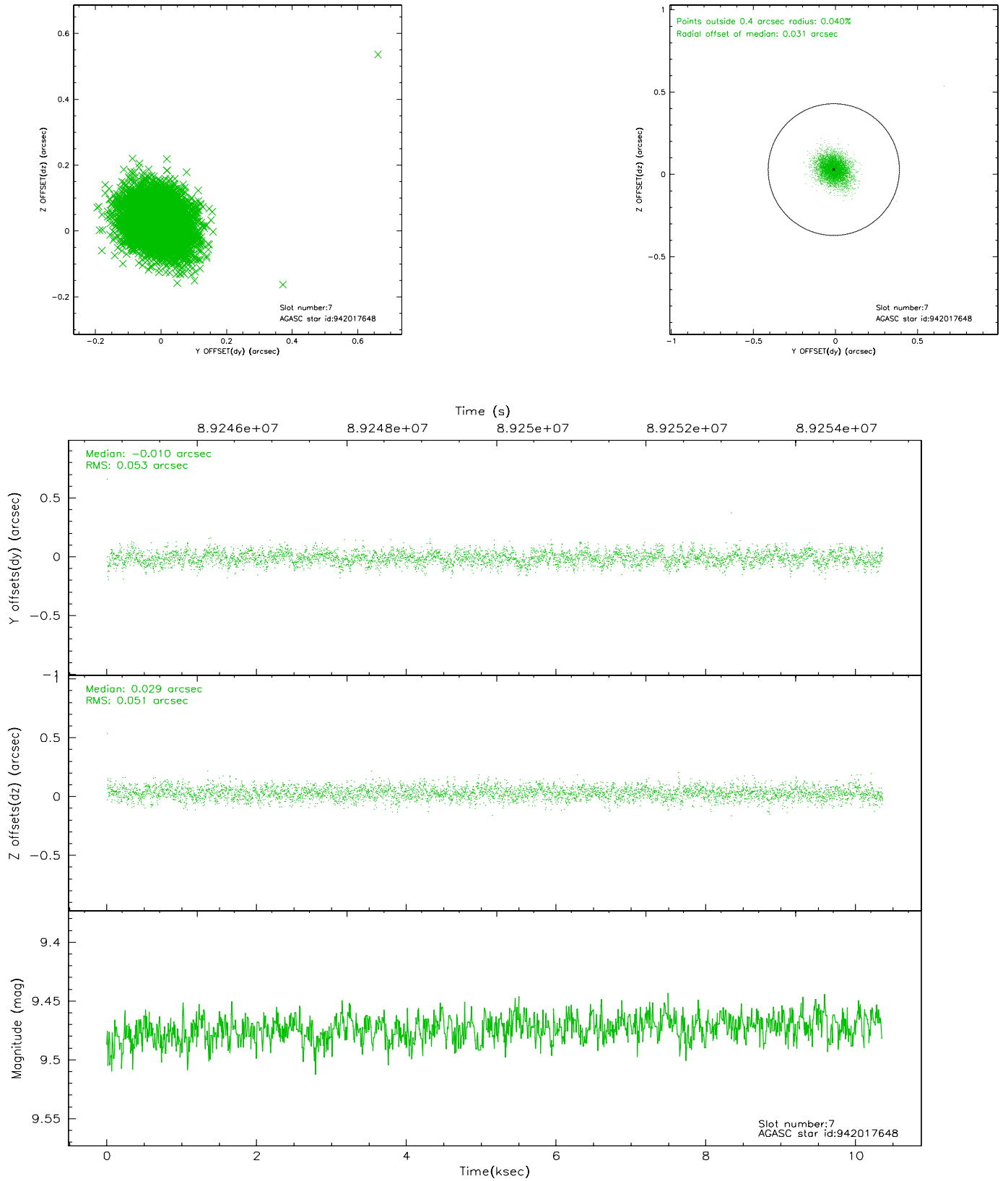
2.4.3 Slot 5



2.4.4 Slot 6

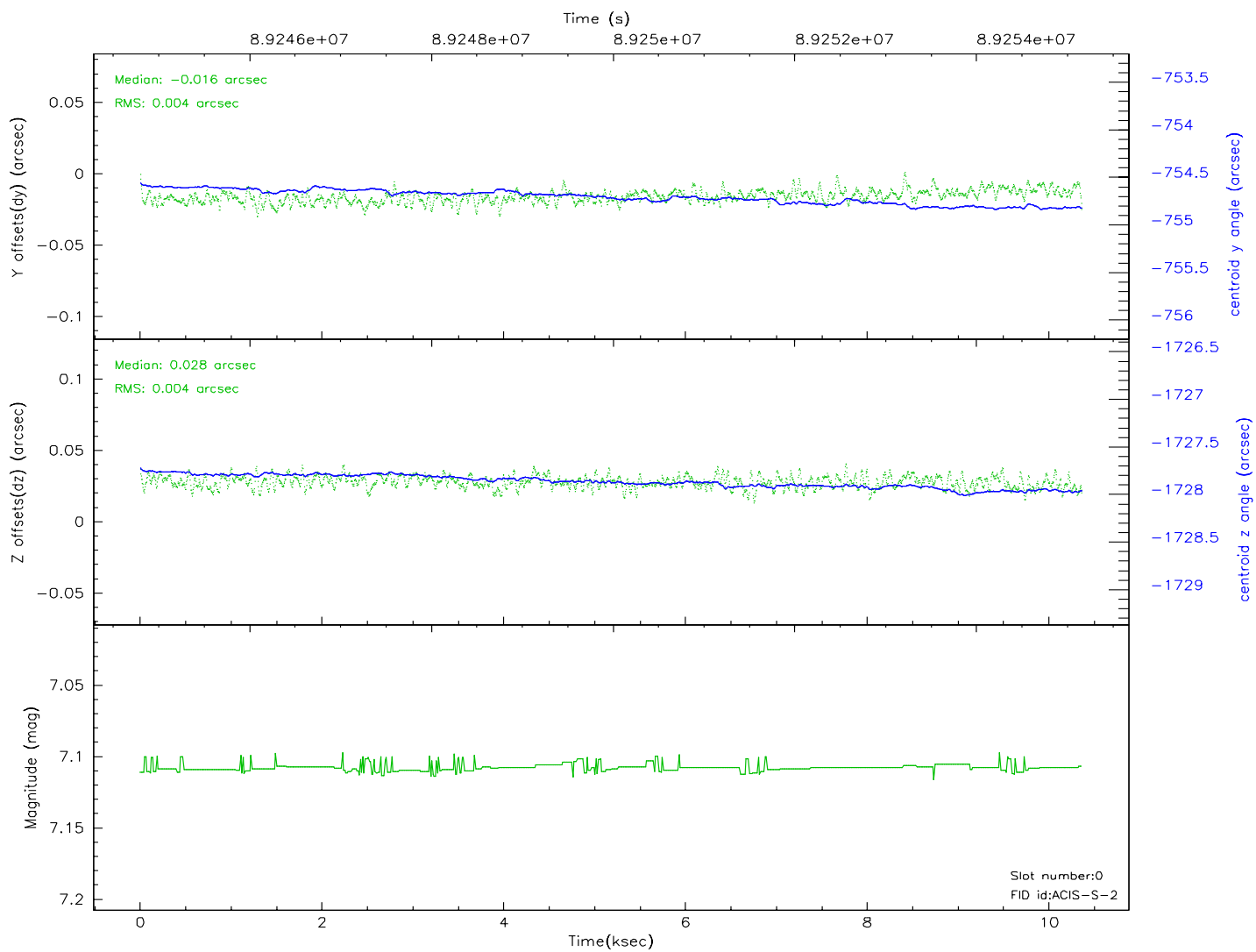
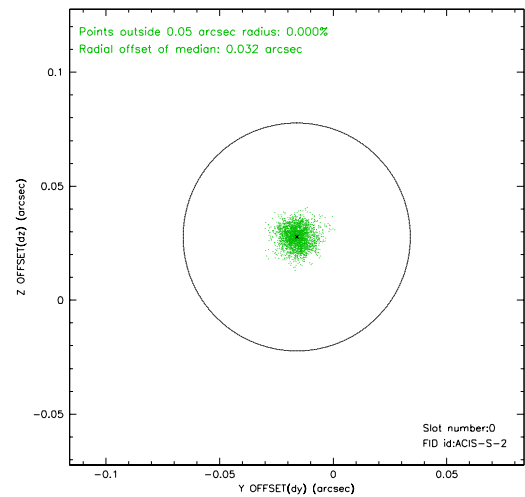
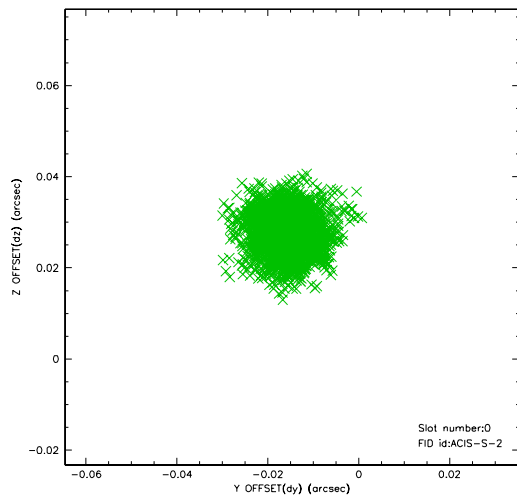


2.4.5 Slot 7

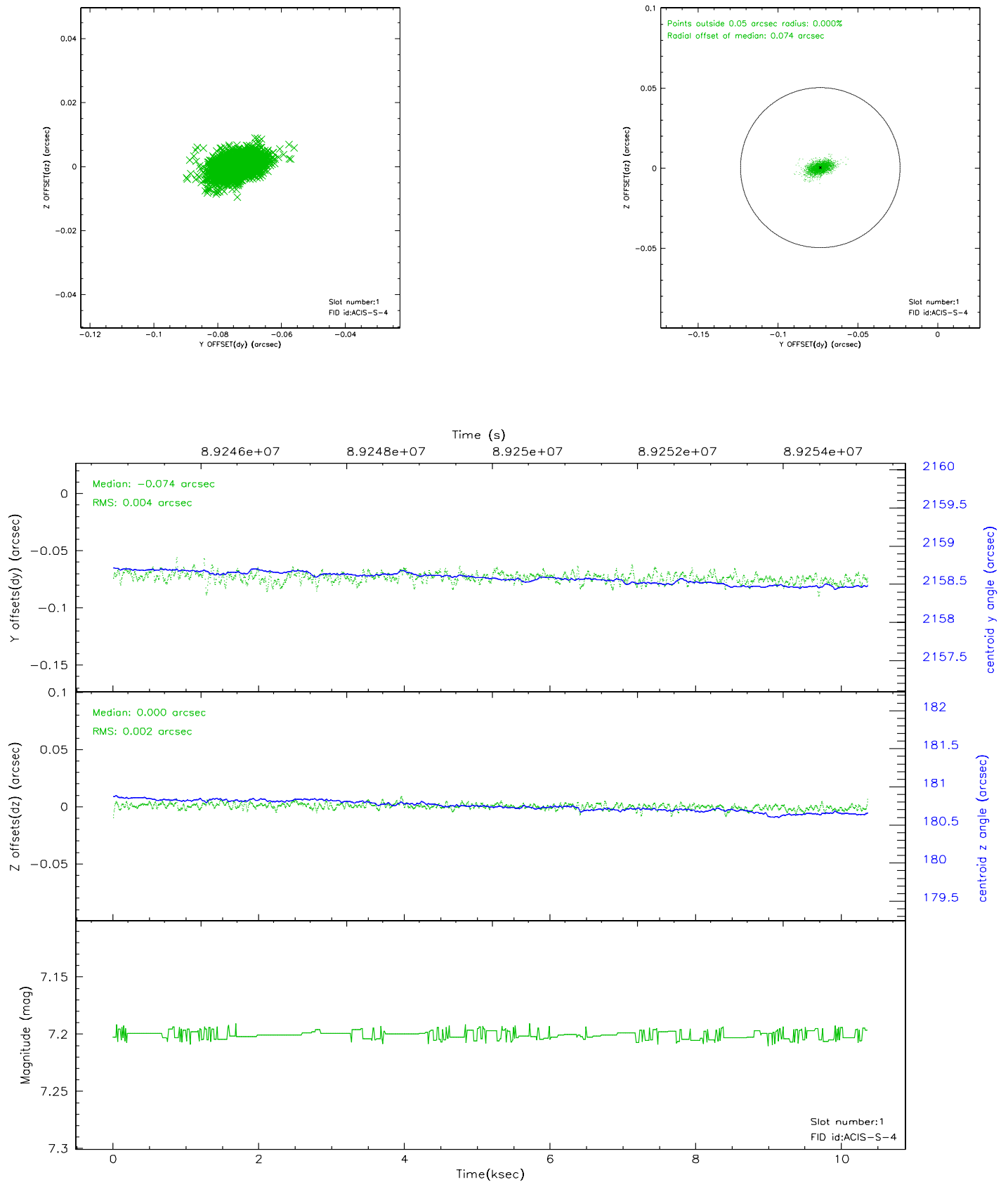


2.5 FID Slots

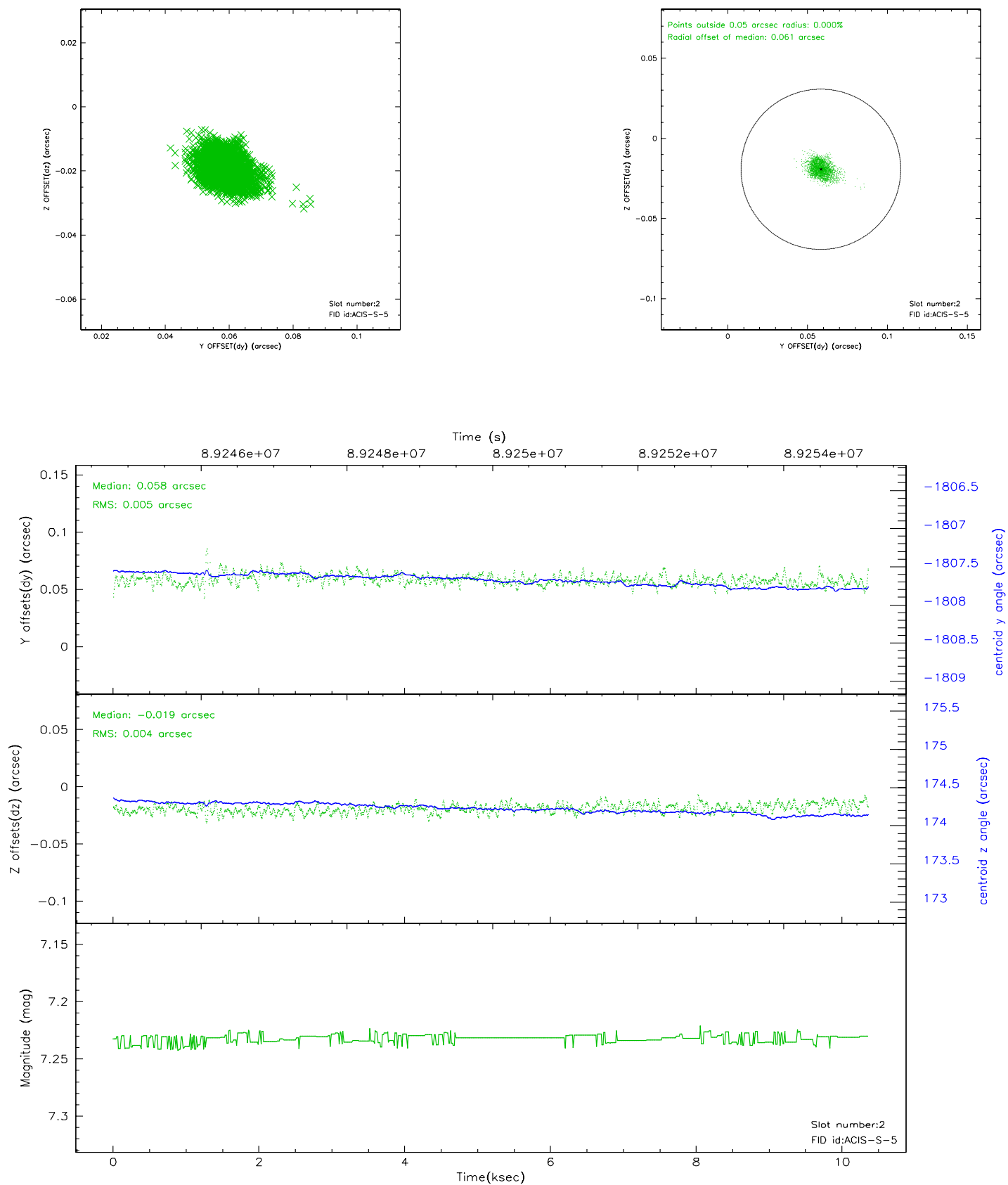
2.5.1 Slot 0



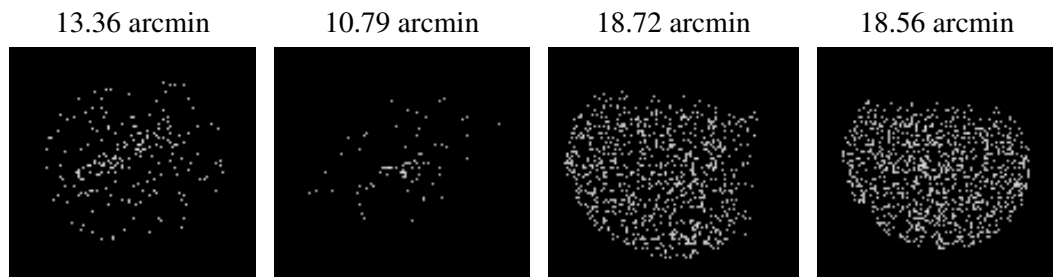
2.5.2 Slot 1



2.5.3 Slot 2



3 Point Sources



A Summary

A.1 Status

V&V Scientist	Beth Sundheim
V&V Date (YYYY-MM-DD)	2007.06.14
V&V Edition	1
V&V Disposition and Status	OK
V&V Charge Time	9.955

A.2 Comments