

V&V Reference Report

L2 ASCDS Version : 8.4.5

Observation 2402 - L2 Version 3
Chandra X-Ray Center

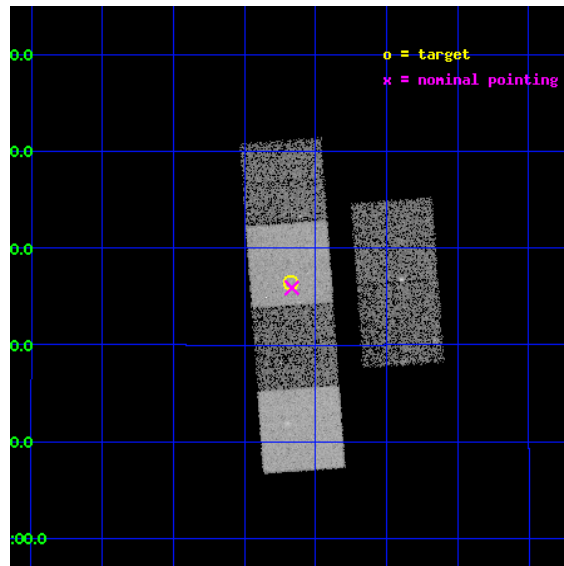
L2 Processing Date : Sep 14 2012

Contents

1	Front	2
2	OBI	3
2.1	OBI	3
2.1.1	Images	3
2.1.2	Bias	3
2.1.3	Parameters	4
2.1.4	Events	4
2.2	Compared Parameters	5
2.3	Aspect	6
2.4	Star Slots	9
2.4.1	Slot 3	9
2.4.2	Slot 4	10
2.4.3	Slot 5	11
2.4.4	Slot 6	12
2.4.5	Slot 7	13
2.5	FID Slots	14
2.5.1	Slot 0	14
2.5.2	Slot 1	15
2.5.3	Slot 2	16
A	Summary	17
A.1	Status	17
A.2	Comments	17

1 Front

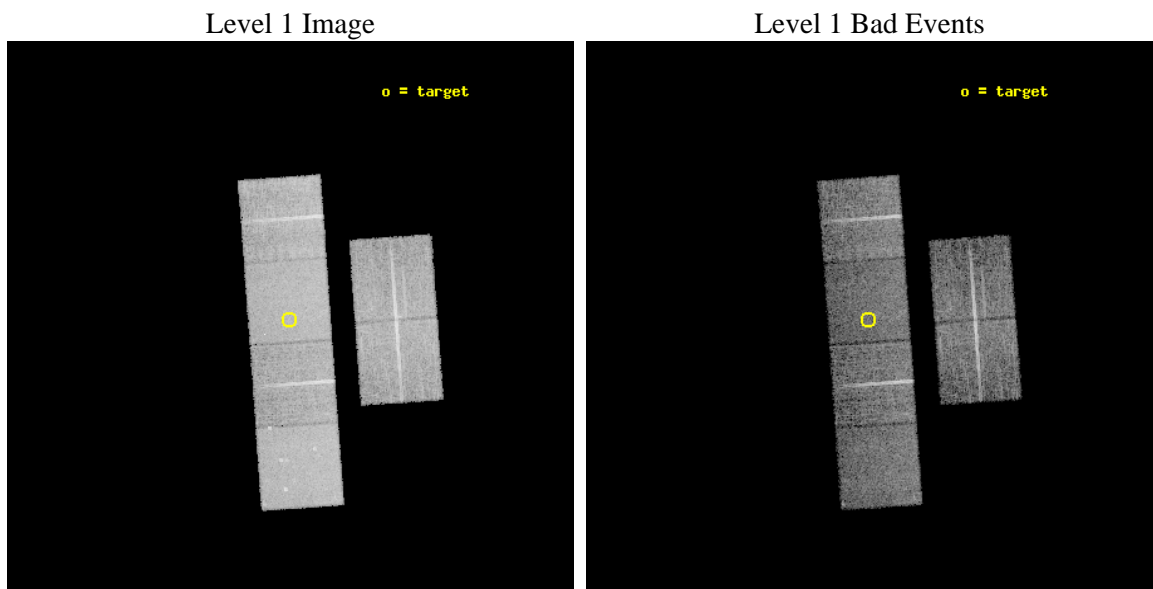
seq_num	600215	Sequence number
obs_id	2402	Observation id
title	VERY ISOLATED ELLIPTICAL GALAXIES: MERGER REMNANTS?	Proposal title
observer	Dr. John Stocke	Principal investigator
object	KI 284	Source name
dtcycle	0	
cycle	P	events from which exps? Prim/Second/Both
ra_targ	131.419	Observer's specified target RA [deg]
dec_targ	7.441139	Observer's specified target Dec [deg]
ra_nom	131.41660103338	Nominal RA [deg]
dec_nom	7.4316858456566	Nominal Dec [deg]
roll_nom	265.85132539746	Nominal Roll [deg]
revision	3	Processing version of data
ontime	9644.8000089675	Sum of GTIs [s]
livetime	9522.6717438526	Livetime [s]
ontime2	9644.8000089675	Sum of GTIs [s]
ontime3	9644.8000089675	Sum of GTIs [s]
ontime5	9644.8000089675	Sum of GTIs [s]
ontime6	9644.8000089675	Sum of GTIs [s]
ontime7	9644.8000089675	Sum of GTIs [s]
ontime8	9644.8000089675	Sum of GTIs [s]
l2events	96885	Number of level 2 events



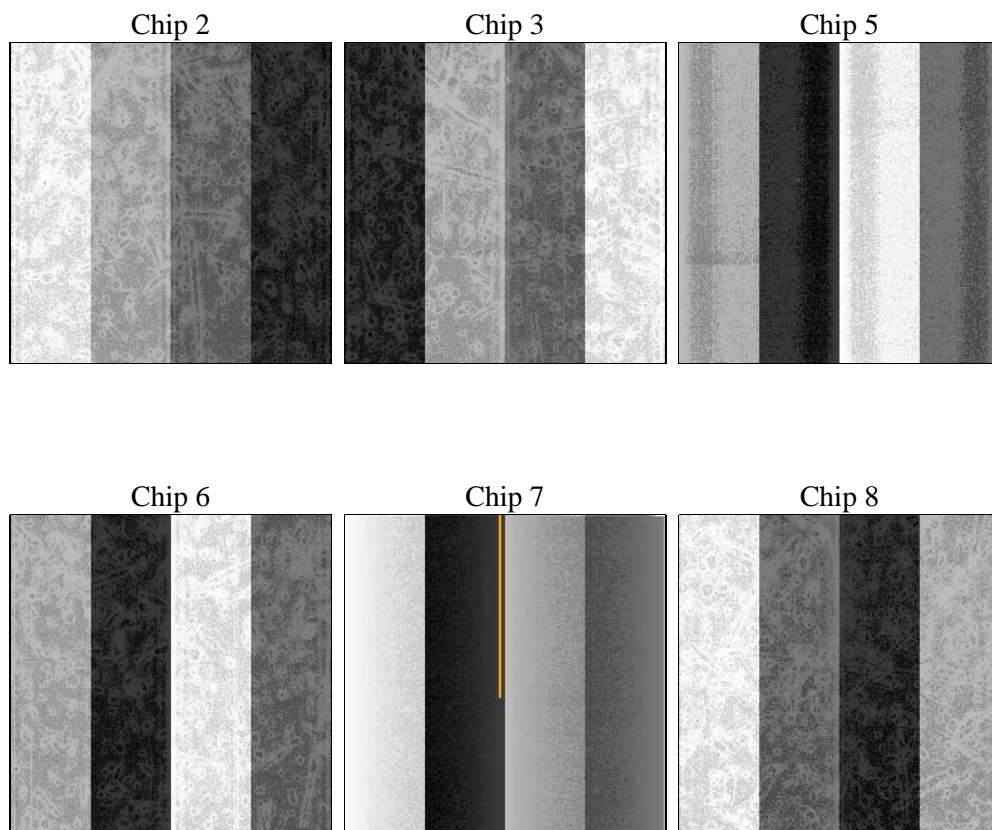
2 OBI

2.1 OBI

2.1.1 Images



2.1.2 Bias



2.1.3 Parameters

obi_num	0	Obi number	sched_exp_time	9500.000000	[s] Scheduled observation exposure time
ascdsver	8.4.5	Processing system revision	ontime	9644.8000089675	Sum of GTIs [s]
caldsver	4.5.1.1	 	ontime2	9644.8000089675	Sum of GTIs [s]
date	2012-09-14T04:18:05	Date and time of file creation	ontime3	9644.8000089675	Sum of GTIs [s]
revision	3	Processing version of data	ontime5	9644.8000089675	Sum of GTIs [s]
			ontime6	9644.8000089675	Sum of GTIs [s]
			ontime7	9644.8000089675	Sum of GTIs [s]
			ontime8	9644.8000089675	Sum of GTIs [s]
			l1events	467756	Number of level 1 events

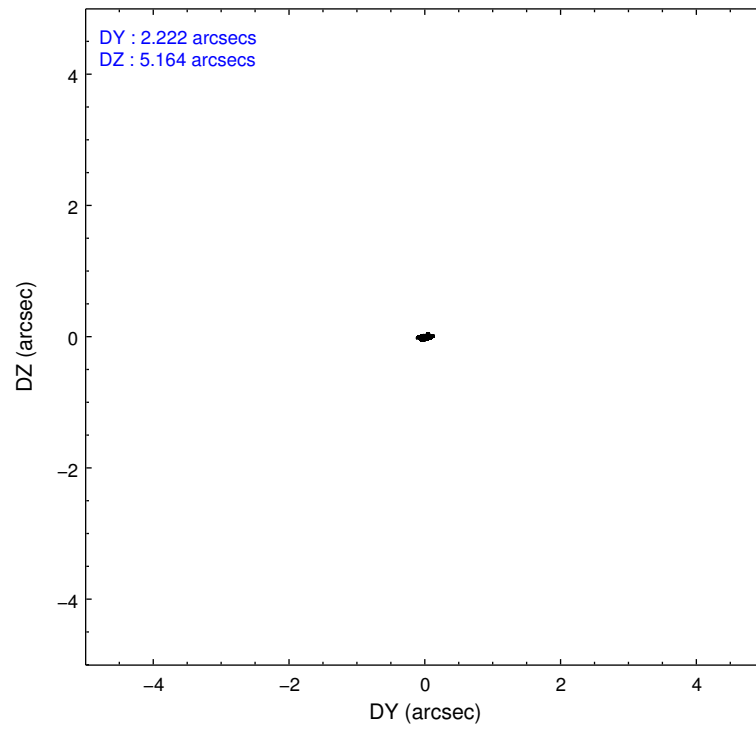
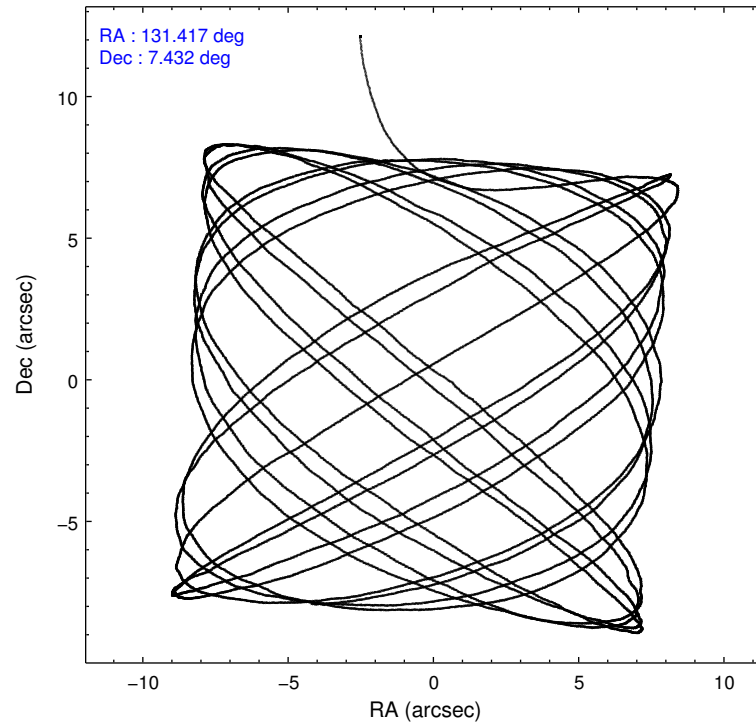
2.1.4 Events

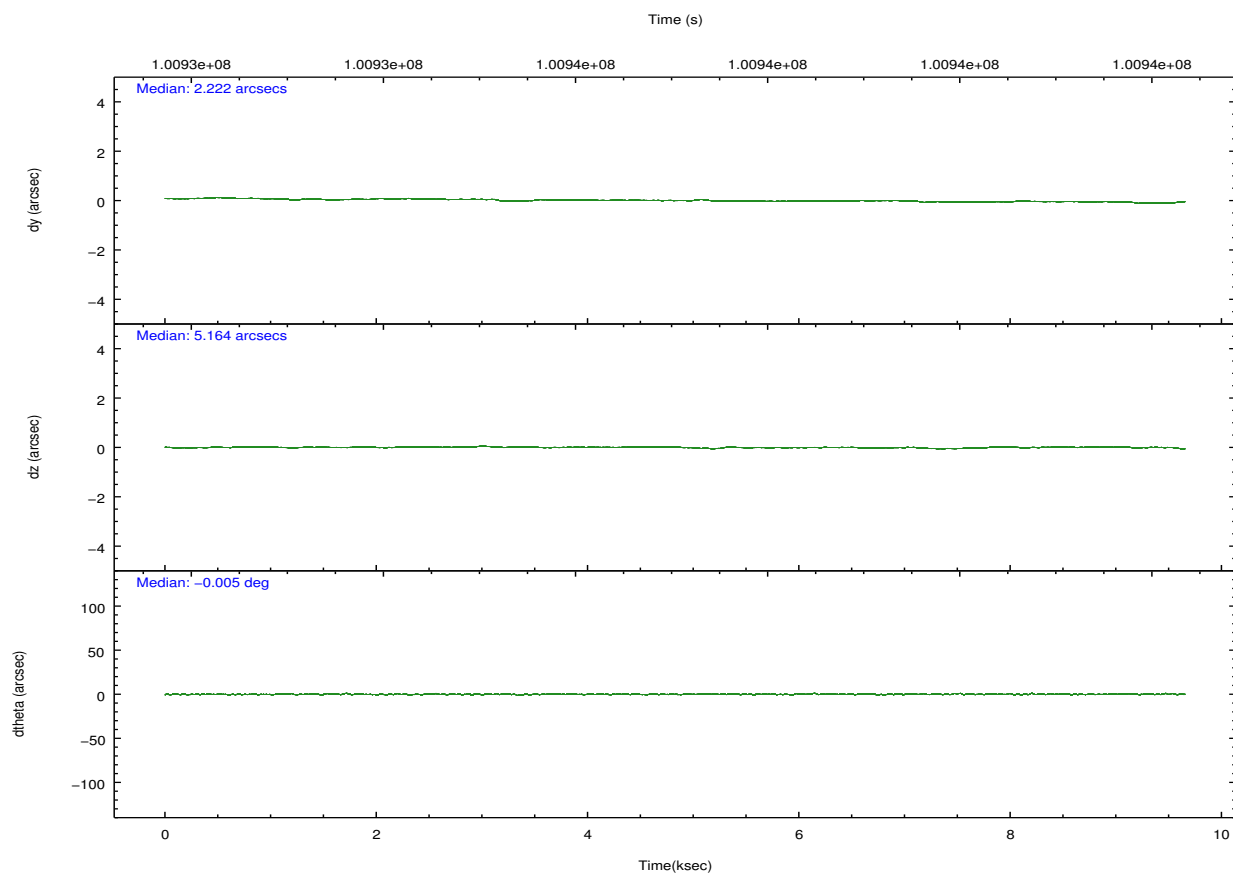
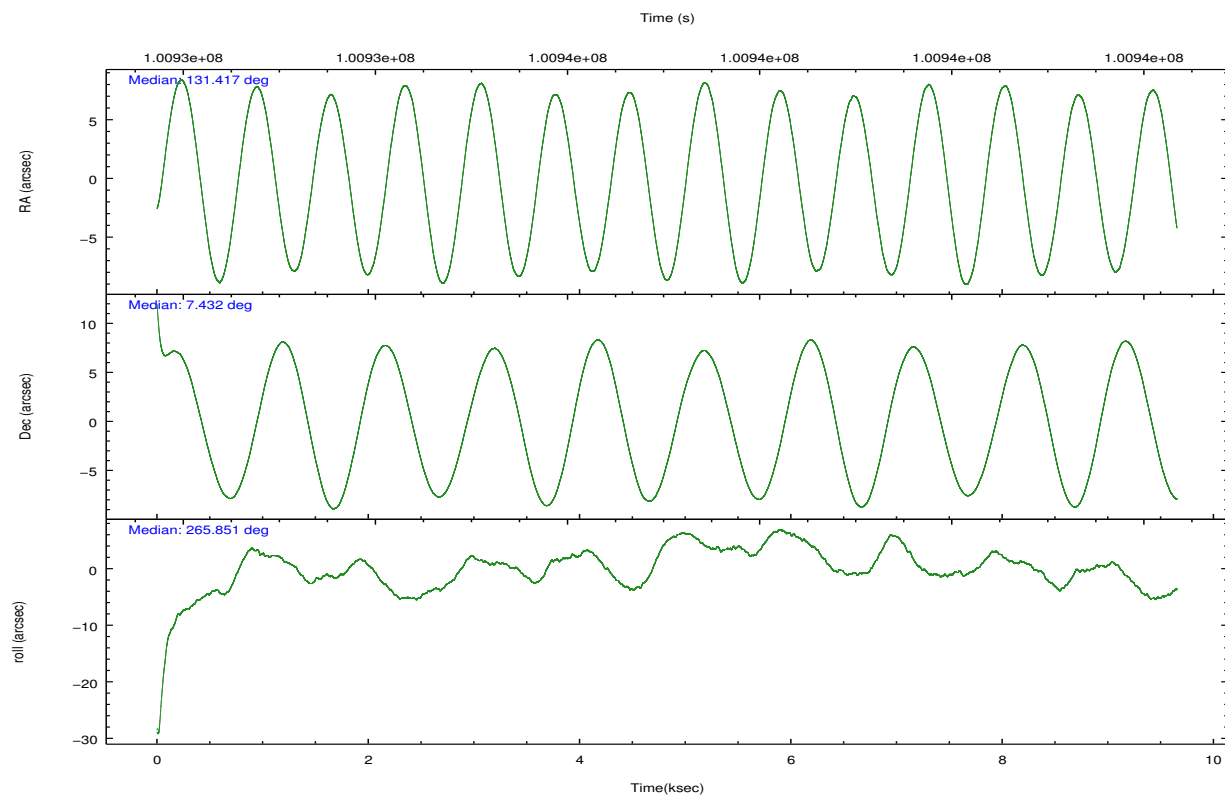
	ccd 2	ccd 3	ccd 5	ccd 6	ccd 7	ccd 8		ccd 2	ccd 3	ccd 5	ccd 6	ccd 7	ccd 8
level 1 events	68795	65178	94809	67542	85468	85964	grade 0 events	2906	3204	4682	3010	3239	5095
rejected events	61859	57967	53743	60358	51839	69818		4%	4%	4%	4%	3%	5%
rejected %	89%	88%	56%	89%	60%	81%	grade 1 events	30	25	149	30	88	58
								0%	0%	0%	0%	0%	0%
							grade 2 events	1606	1508	12405	1483	7045	3792
								2%	2%	13%	2%	8%	4%
							grade 3 events	699	721	1933	737	3261	1637
								1%	1%	2%	1%	3%	1%
							grade 4 events	739	782	1978	744	3145	1641
								1%	1%	2%	1%	3%	1%
							grade 5 events	2264	2476	7335	2847	8252	3555
								3%	3%	7%	4%	9%	4%
							grade 6 events	1308	1337	22407	1531	18775	4892
								1%	2%	23%	2%	21%	5%
							grade 7 events	59243	55125	43920	57160	41663	65294
								86%	84%	46%	84%	48%	75%

2.2 Compared Parameters

Parameter	Planned	Actual	Parameter	Planned	Actual
Instrument	ACIS	ACIS	Obspar format version number	7	7
Detector	ACIS-235678	ACIS-235678	Obspar file type	PREDICTED	ACTUAL
Grating	NONE	NONE	Obspar update status	NONE	UPDATED
Data mode	FAINT	FAINT	Number of optional ACIS chips dropped	0	0
Observation mode	POINTING	POINTING	On-chip summing requested	N	N
[deg] Pointing RA	131.404286	131.4166010333817	Subarray requested	NONE	NONE
[deg] Pointing Dec	7.456108	7.431685845656593	Alternating exposures requested	N	N
[deg] Pointing Roll	265.696312	265.8513253974593	[s] Primary exposure time	0.000000	3.2
[mm] SIM focus pos	-0.684267	-0.6828225247311905			
[mm] SIM defocus	0	0.001444936568705701			
[mm] SIM translation stage pos	-190.132523	-190.1400660498719			
[mm] SIM translation stage offset	0	0.00754346686406393			
[s] Observation start time (MET)	100932363.184000	100931011.92892			
Observation start date	2001-03-14T04:44:59	2001-03-14T04:23:31			
[s] Observation end time (MET)	100941863.184000	100942531.90437			
Observation end date	2001-03-14T07:23:19	2001-03-14T07:35:31			
Read mode	TIMED	TIMED			

2.3 Aspect



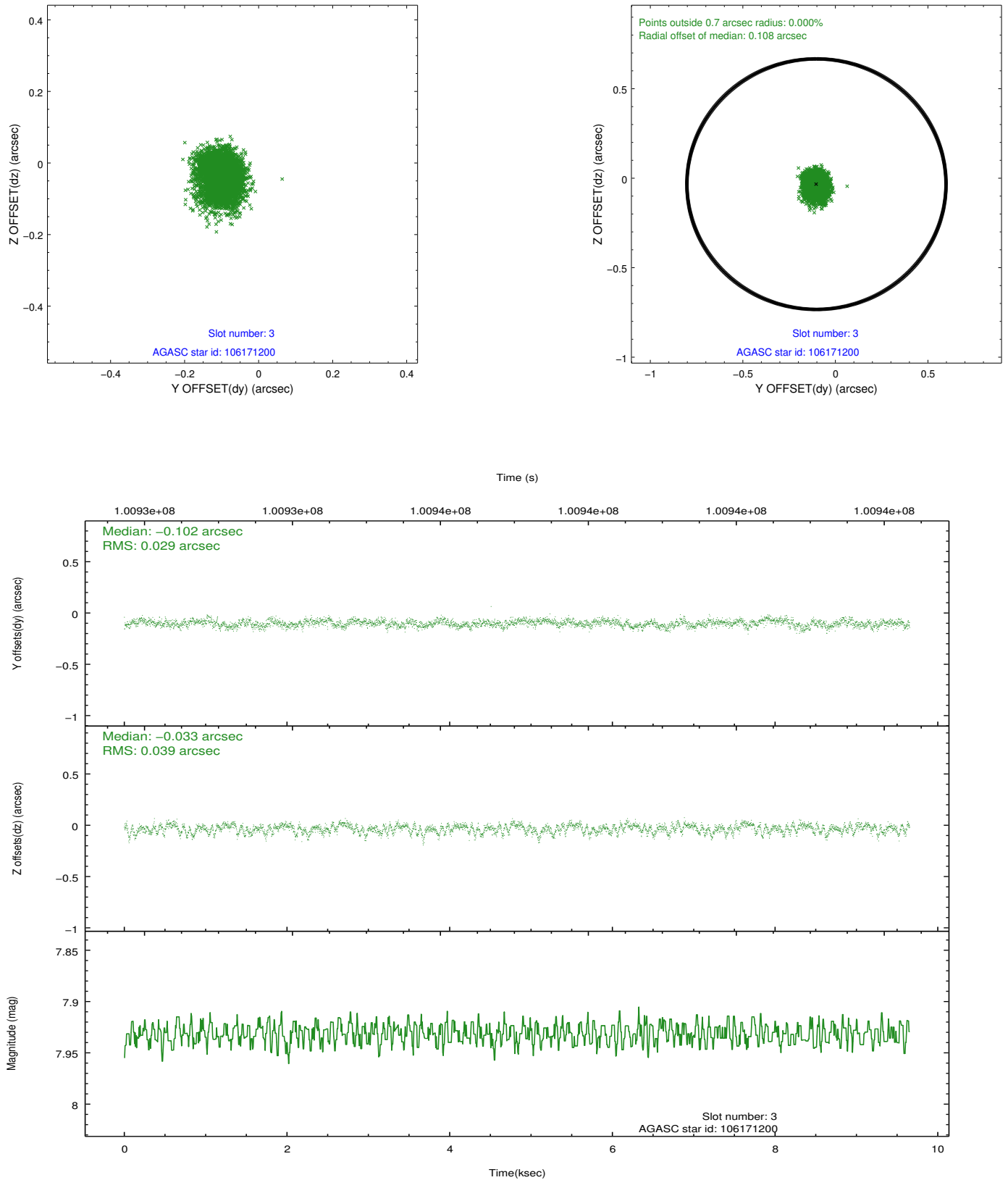


Slot Statistics

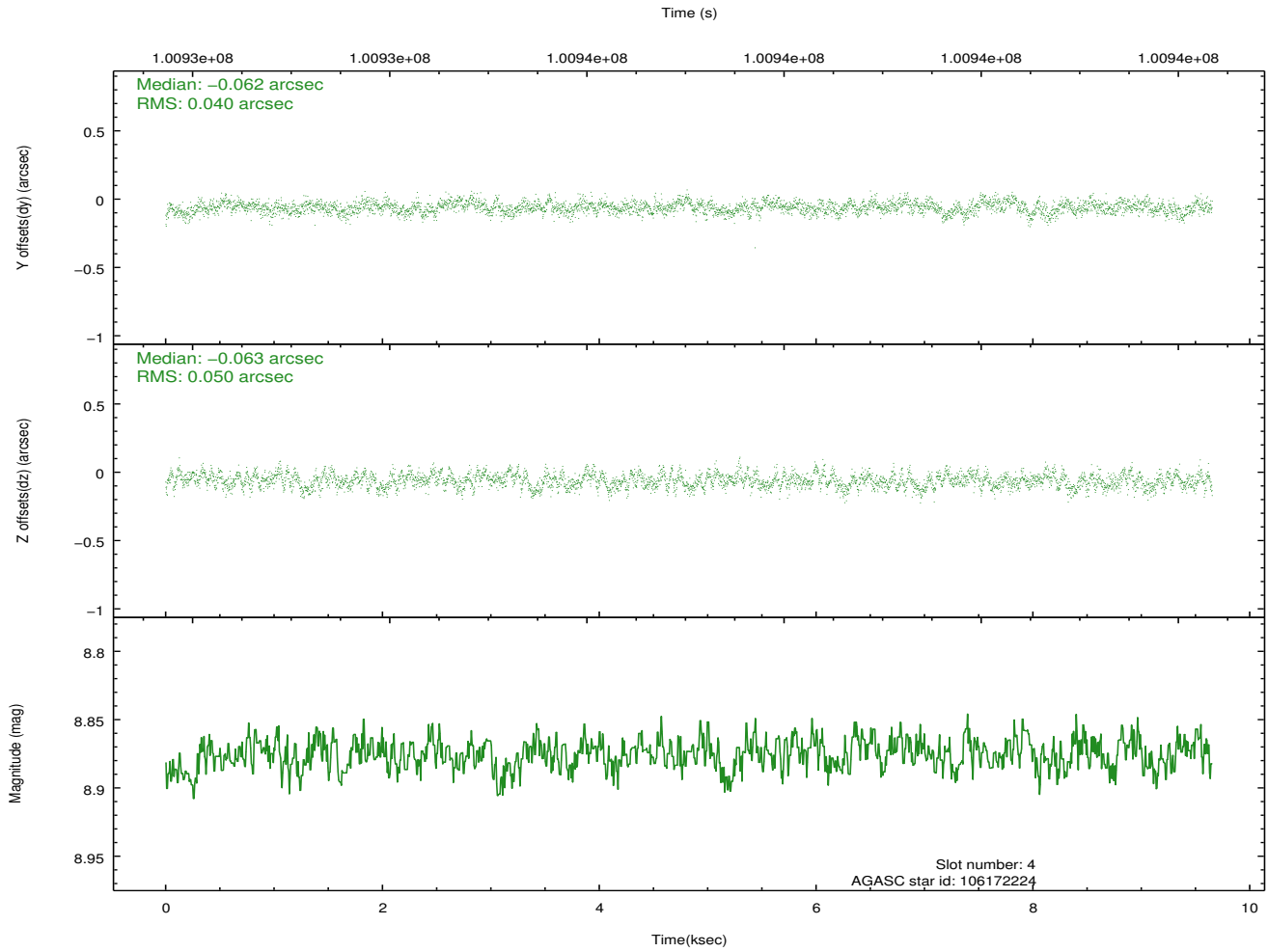
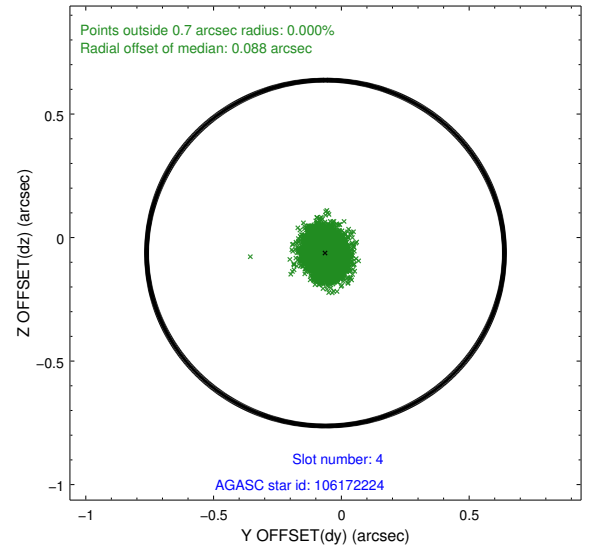
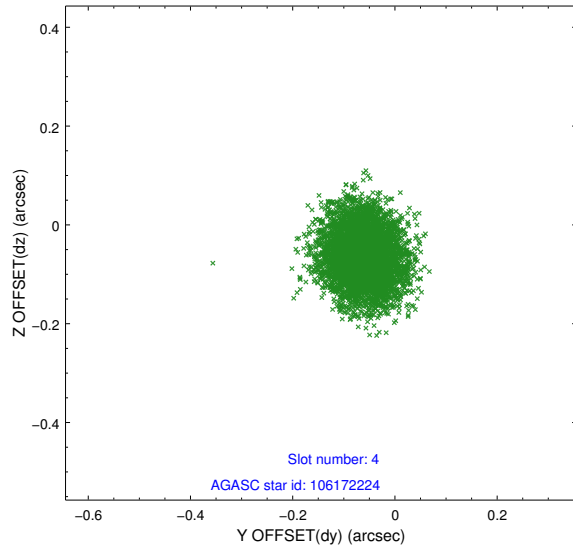
slot	status	id	mag	n_pts	med_dy	med_dz	dr1	dr2	ra	dec	mean_y	mean_z
0	FID	ACIS-S-2	7.11	2355	-0.035	-0.005	0.007	0.011	0.000000	0.000000	-754.84	-1726.30
1	FID	ACIS-S-4	7.20	2355	-0.028	0.018	0.006	0.010	0.000000	0.000000	2158.15	181.70
2	FID	ACIS-S-5	7.24	2355	0.032	-0.005	0.006	0.011	0.000000	0.000000	-1806.94	175.89
3	GUIDE	106171200	7.93	4710	-0.102	-0.033	0.052	0.084	131.209701	7.621491	-540.68	-737.73
4	GUIDE	106172224	8.88	4709	-0.062	-0.063	0.069	0.110	131.000909	7.699425	-765.16	-1501.67
5	GUIDE	106174520	8.97	4708	-0.086	-0.039	0.068	0.111	131.124139	8.078906	-2160.24	-1165.05
6	GUIDE	29365320	9.10	4707	0.119	0.064	0.070	0.112	131.764940	7.141683	1032.39	1368.76
7	GUIDE	29231608	9.69	4690	0.132	0.077	0.088	0.141	131.202086	6.979946	1764.96	-592.17

2.4 Star Slots

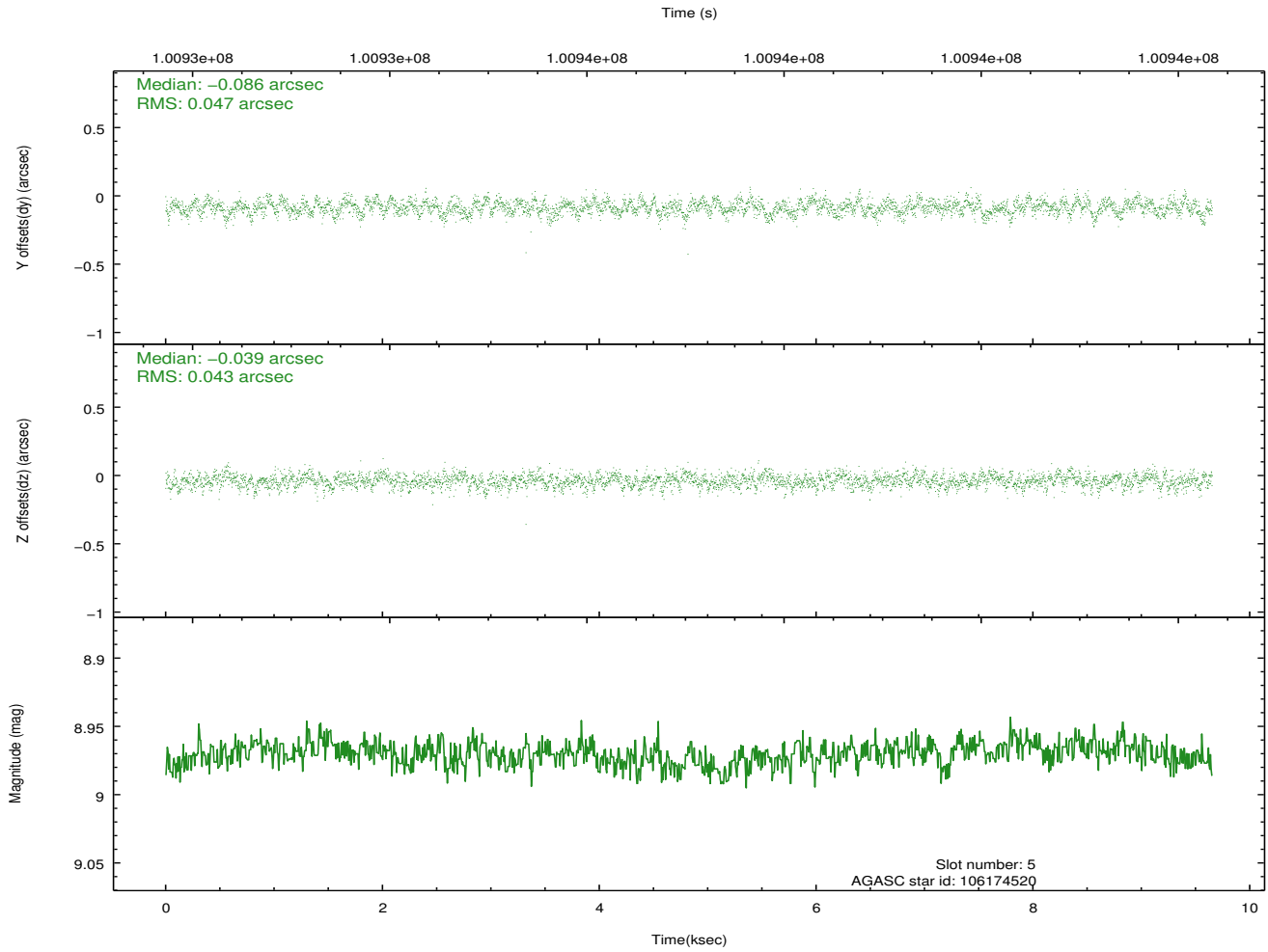
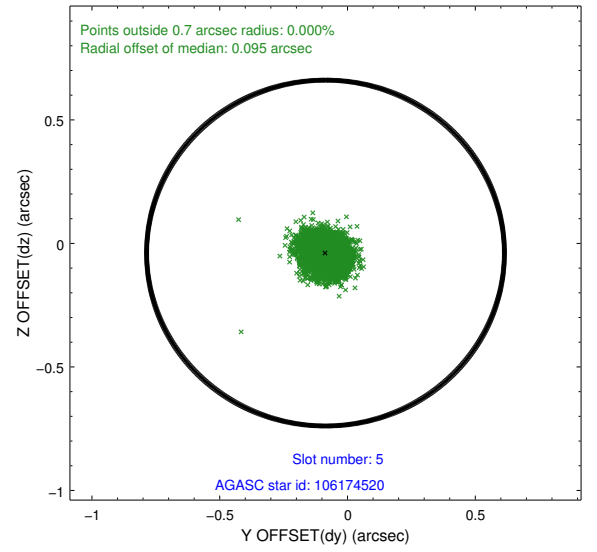
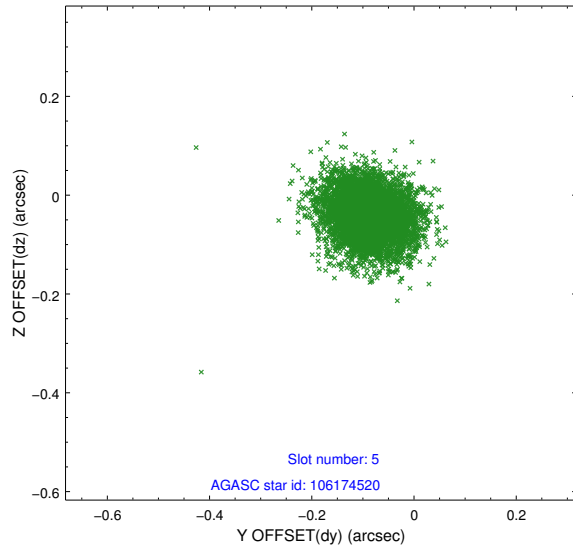
2.4.1 Slot 3



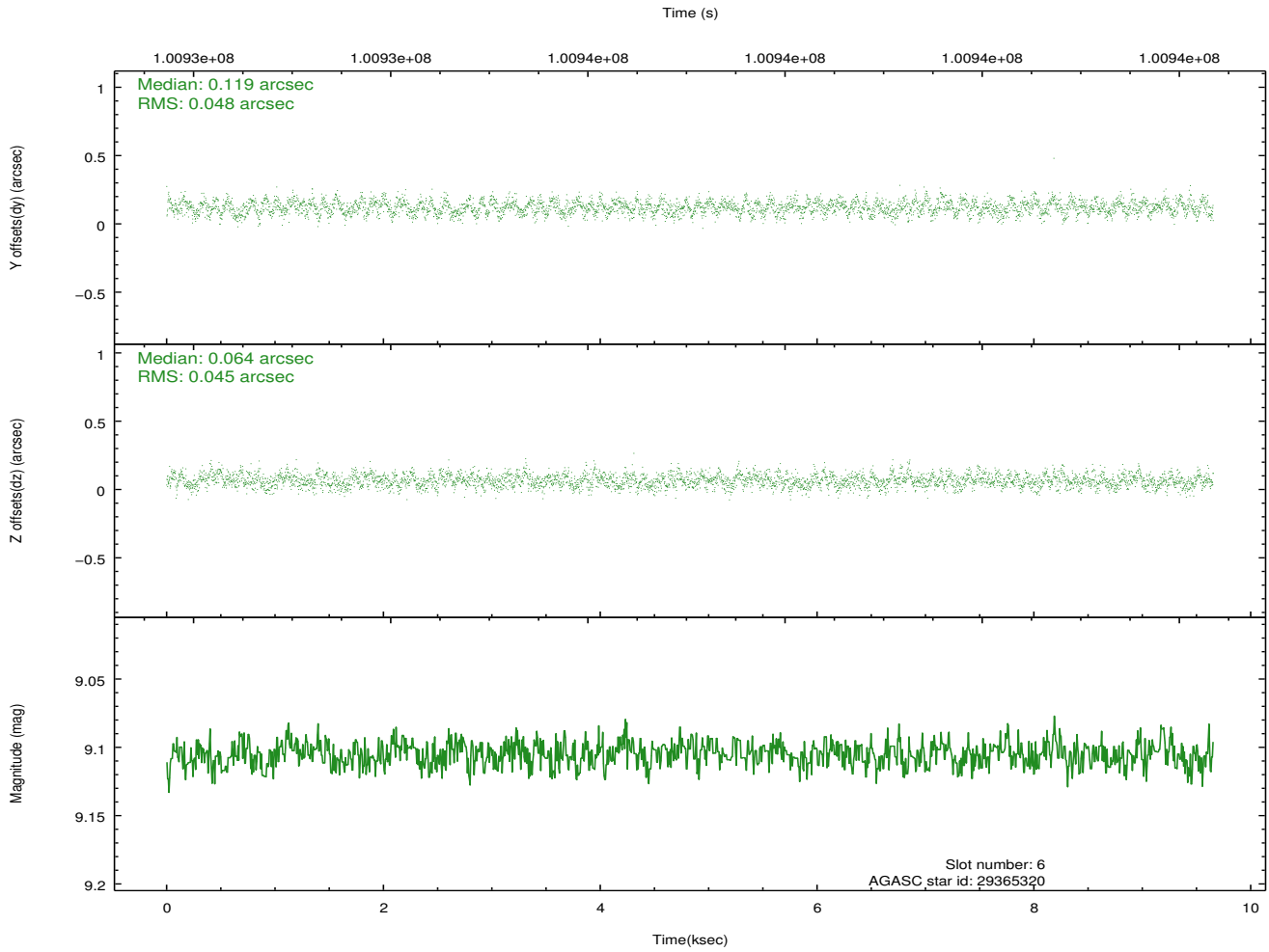
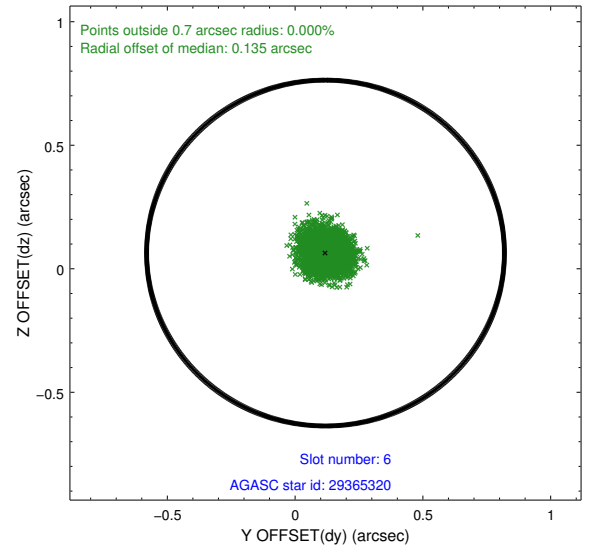
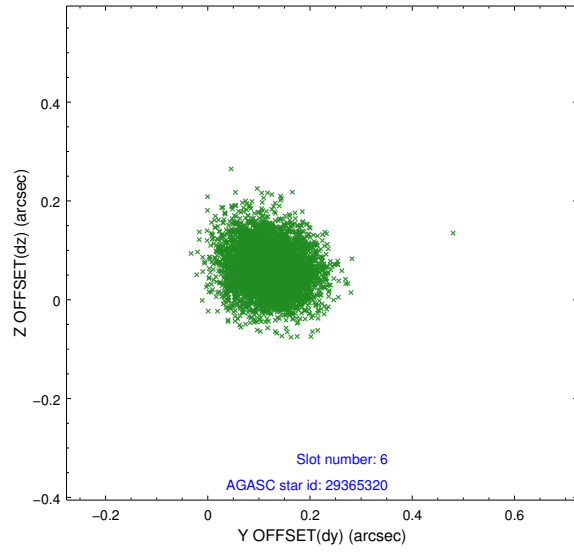
2.4.2 Slot 4



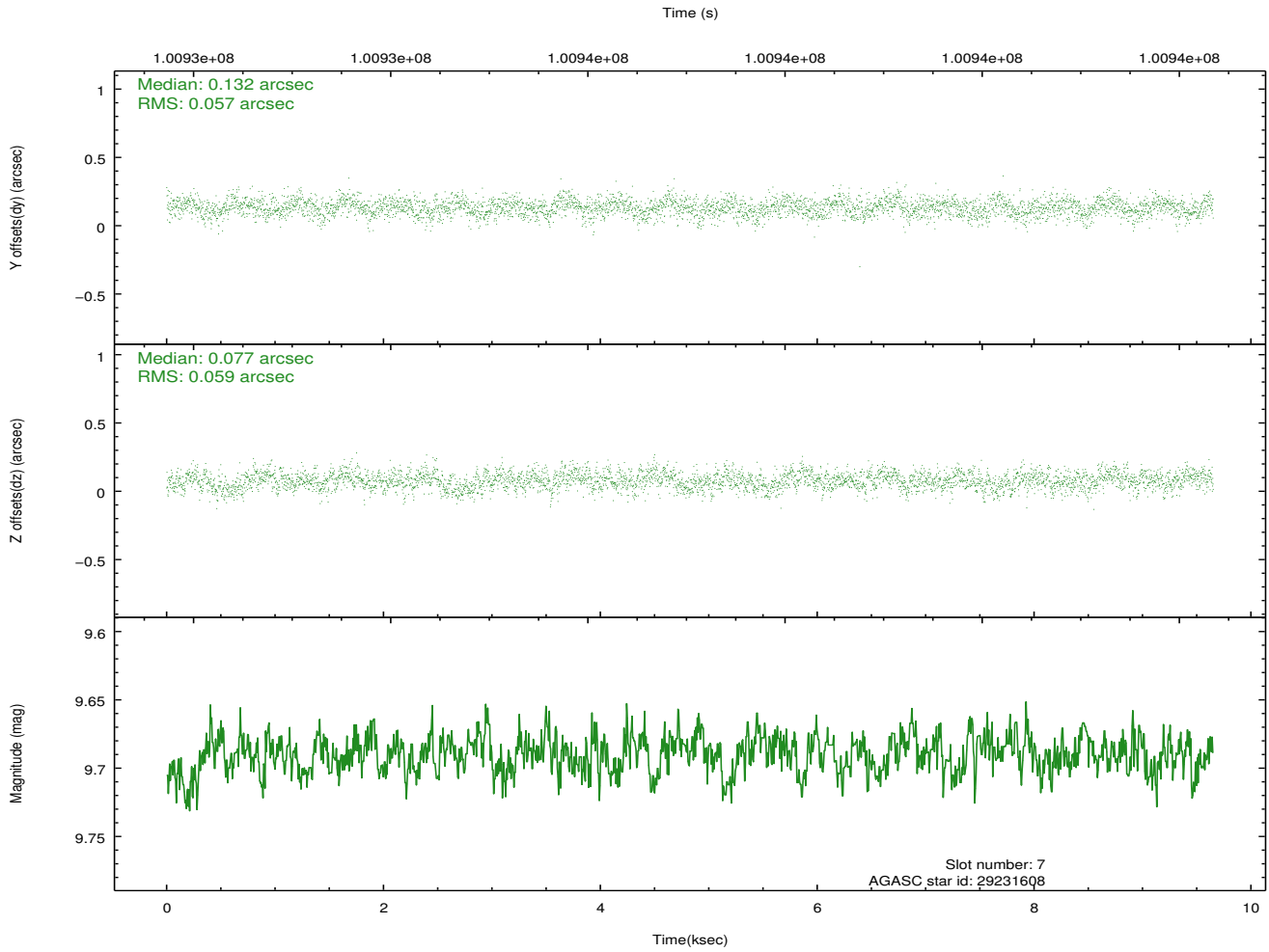
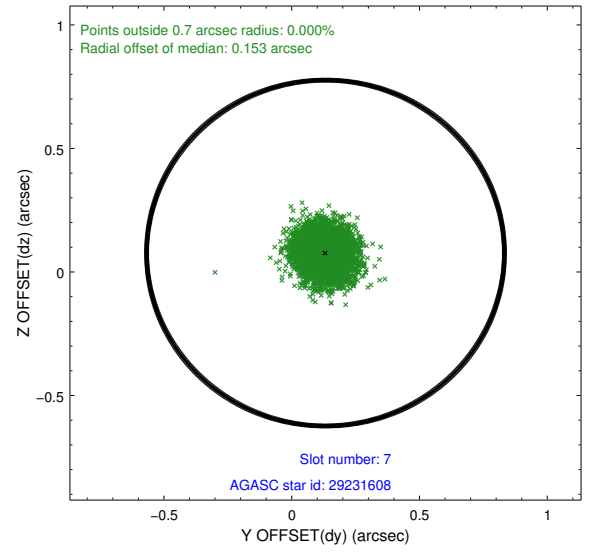
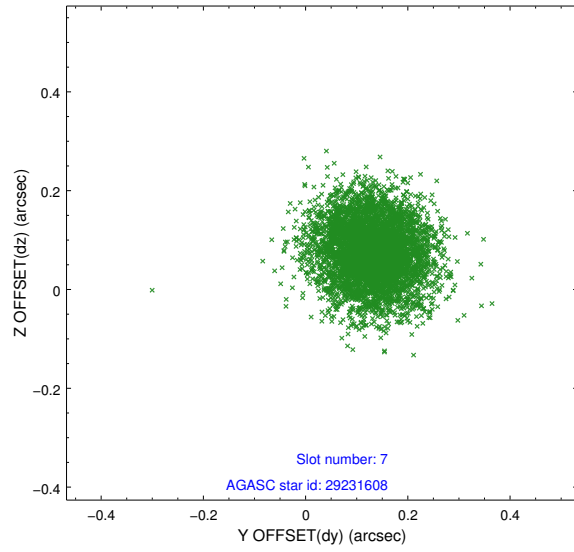
2.4.3 Slot 5



2.4.4 Slot 6

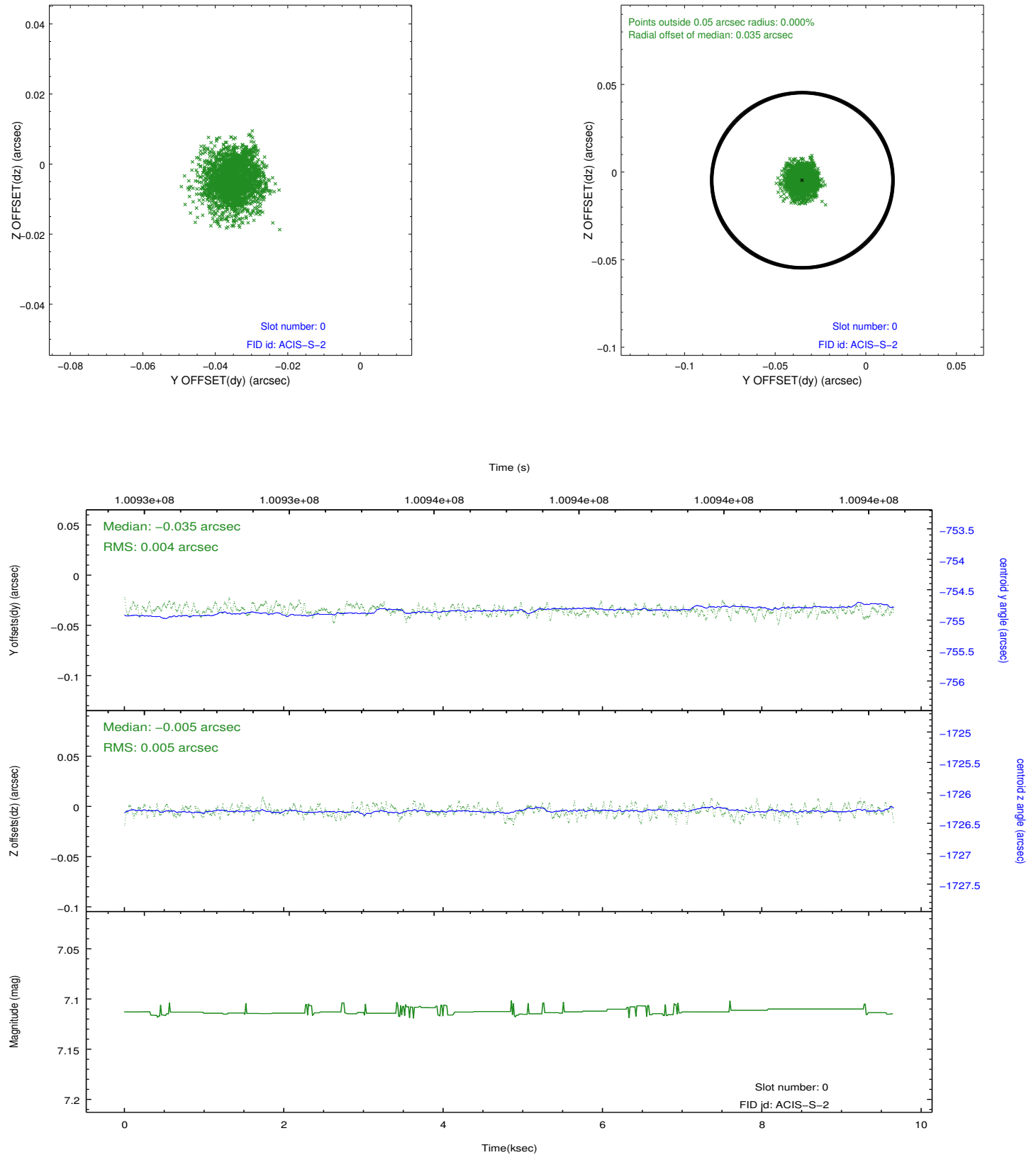


2.4.5 Slot 7

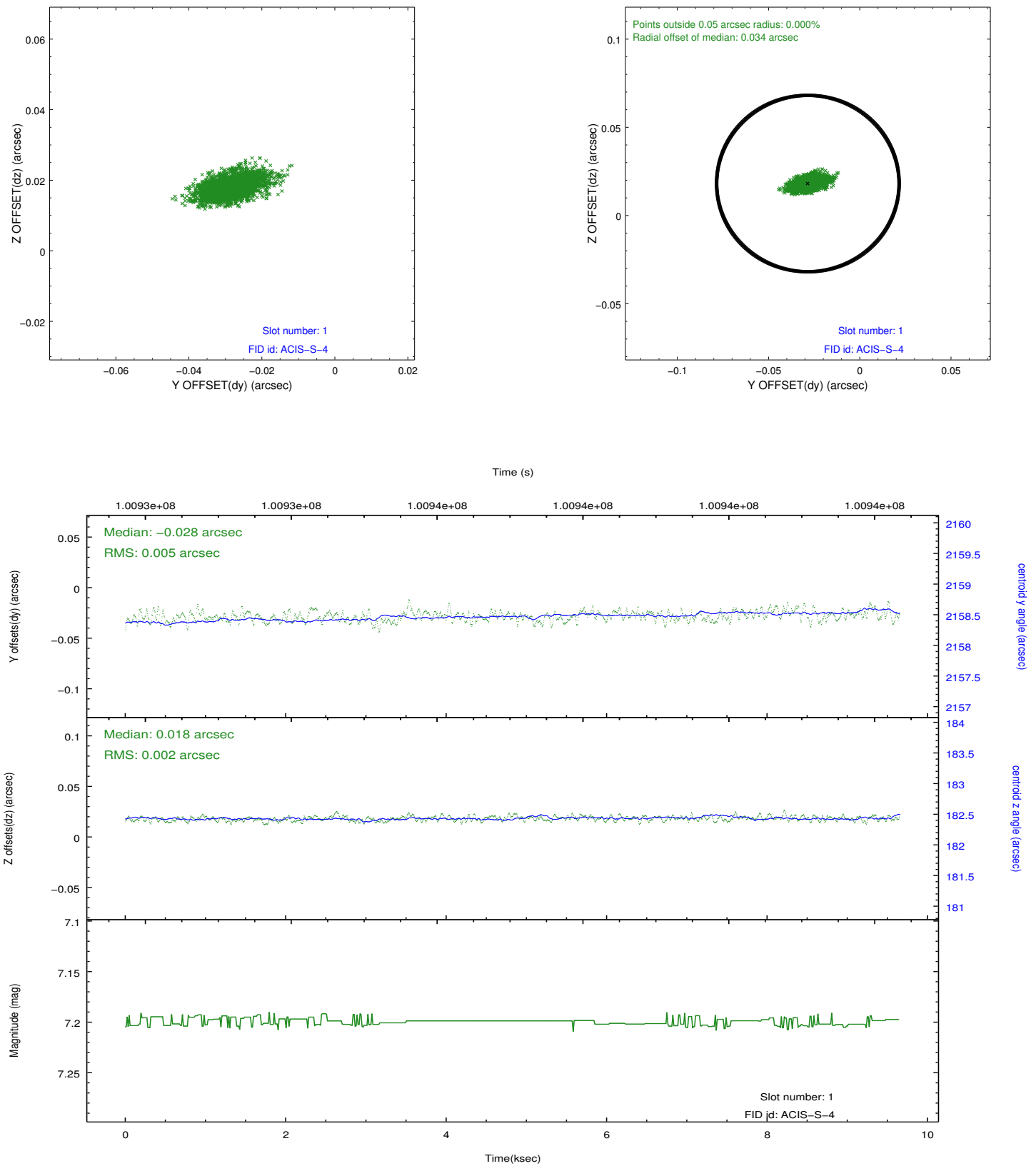


2.5 FID Slots

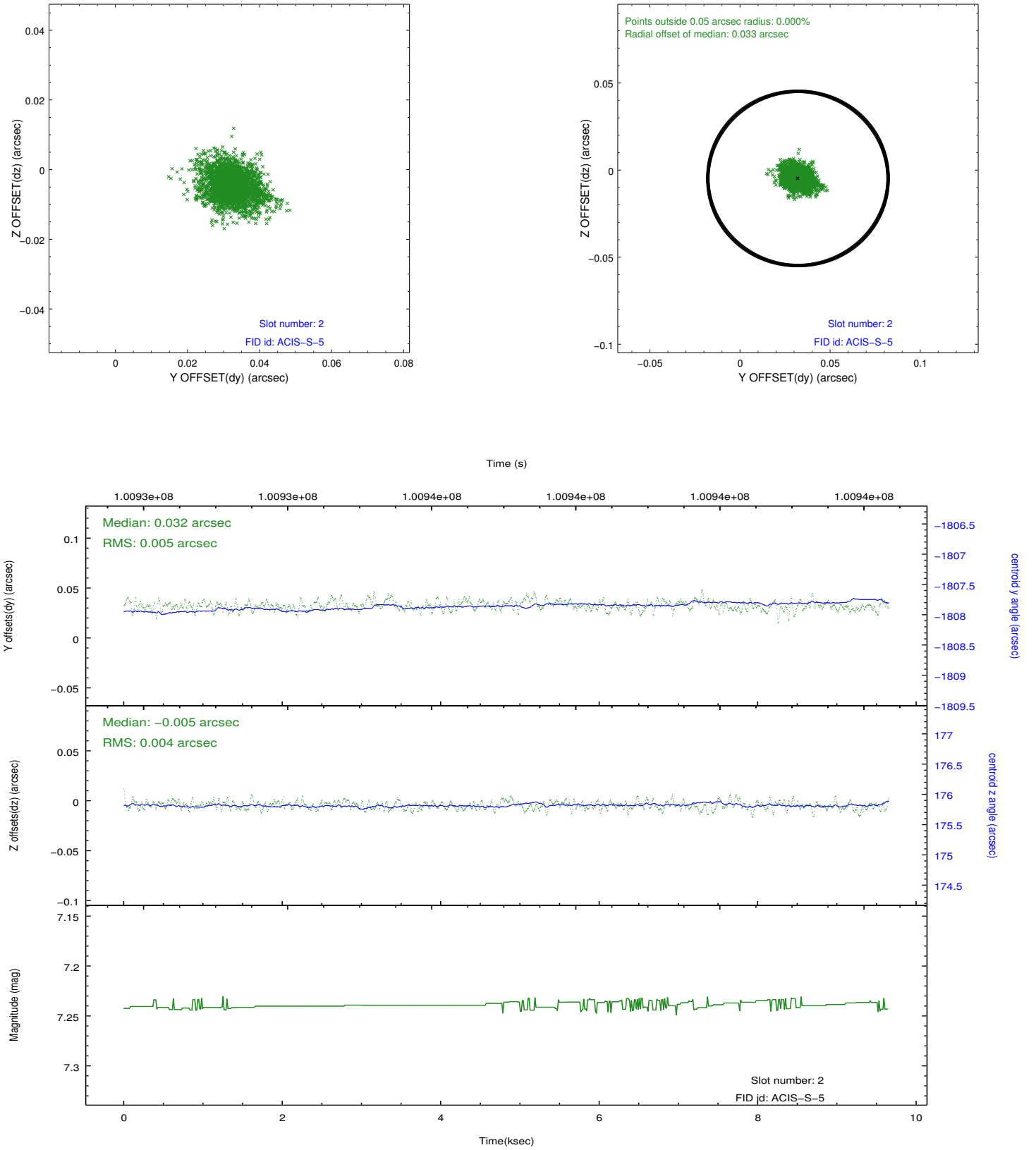
2.5.1 Slot 0



2.5.2 Slot 1



2.5.3 Slot 2



A Summary

A.1 Status

V&V Scientist	Jen Lauer
V&V Date (YYYY-MM-DD)	2012.09.18
V&V Edition	1
V&V Disposition and Status	OK
V&V Charge Time	8.499

A.2 Comments

Charge time for this ObsId remains at original value of 8.499 ks, although with the current processing the charge time would have been 9.6448 ksec.