

# V&V Reference Report

## L2 ASCDS Version : 7.6.9

Observation 2074 - L2 Version 001  
Chandra X-Ray Center

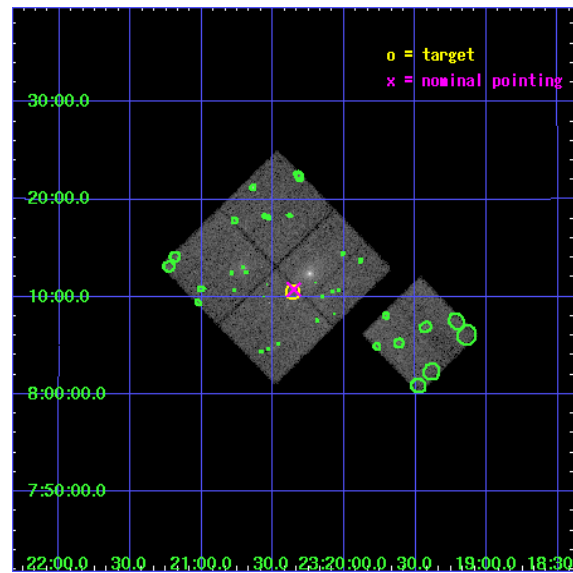
L2 Processing Date : Dec 21 2006

## Contents

<b>1</b>	<b>Front</b>	<b>2</b>
<b>2</b>	<b>OBI</b>	<b>3</b>
2.1	OBI . . . . .	3
2.1.1	Images . . . . .	3
2.1.2	Bias . . . . .	3
2.1.3	Parameters . . . . .	4
2.1.4	Events . . . . .	4
2.2	Compared Parameters . . . . .	5
2.3	Aspect . . . . .	6
2.4	Star Slots . . . . .	9
2.4.1	Slot 3 . . . . .	9
2.4.2	Slot 4 . . . . .	10
2.4.3	Slot 5 . . . . .	11
2.4.4	Slot 6 . . . . .	12
2.4.5	Slot 7 . . . . .	13
2.5	FID Slots . . . . .	14
2.5.1	Slot 0 . . . . .	14
2.5.2	Slot 1 . . . . .	15
2.5.3	Slot 2 . . . . .	16
<b>3</b>	<b>Point Sources</b>	<b>17</b>
<b>A</b>	<b>Summary</b>	<b>18</b>
A.1	Status . . . . .	18
A.2	Comments . . . . .	18

# 1 Front

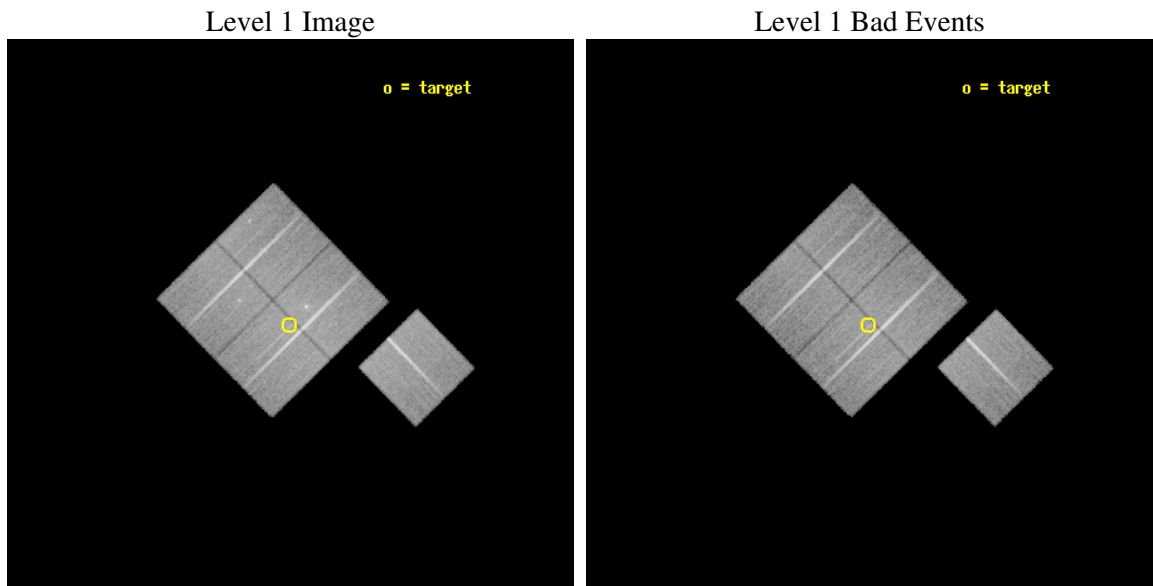
seq_num	600208
obs_id	2074
title	IN SEARCH OF ``NORMAL" ELLIPTICAL GALAXIES
observer	Dr. William Forman
object	NGC7619/NGC7626
dtcycle	0
cycle	P
ra_targ	350.09
dec_targ	8.175
ra_nom	350.08817683307
dec_nom	8.1793729464104
roll_nom	135.59625049305
revision	2
ontime	27093.877057076
livetime	26739.875607103
ontime0	27093.876967415
ontime1	27097.018007413
ontime2	27100.158967629
ontime3	27093.877057076
ontime6	27100.158957735
l2events	113961



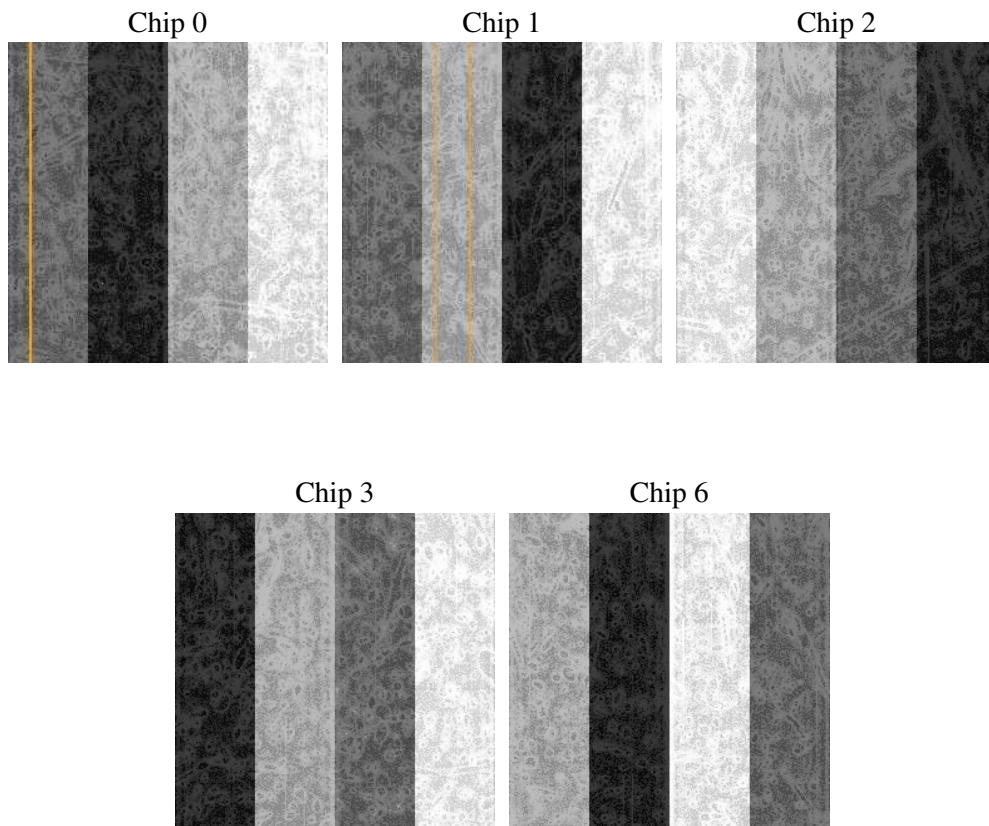
## 2 OBI

### 2.1 OBI

#### 2.1.1 Images



#### 2.1.2 Bias



### 2.1.3 Parameters

obi_num	0
ascdsver	7.6.9
caldbver	3.2.4
date	2006-12-21T16:59:58
revision	2

sched_exp_time	27000.000000
ontime	27097.445558637
ontime0	27097.445468977
ontime1	27100.586508974
ontime2	27103.727469191
ontime3	27097.445558637
ontime6	27103.727459297
l1events	938456

### 2.1.4 Events

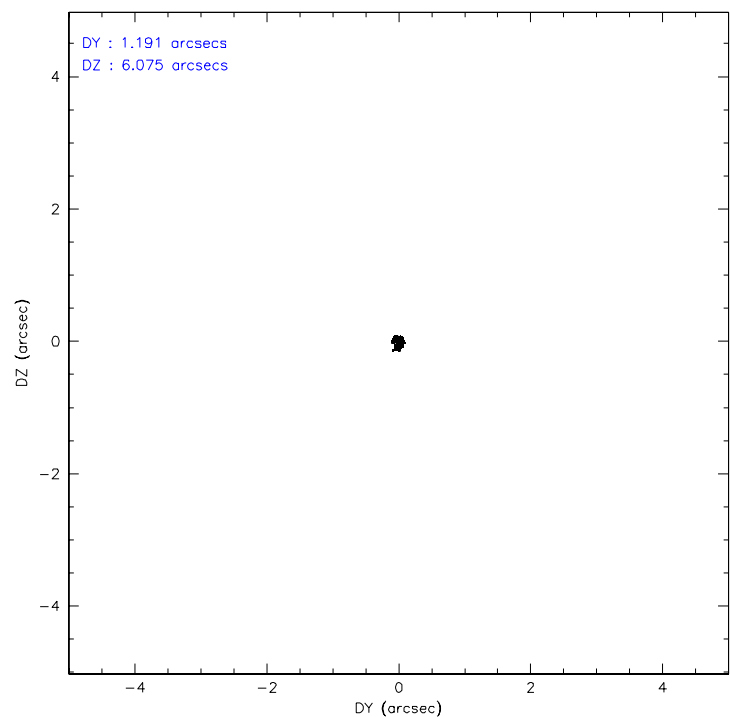
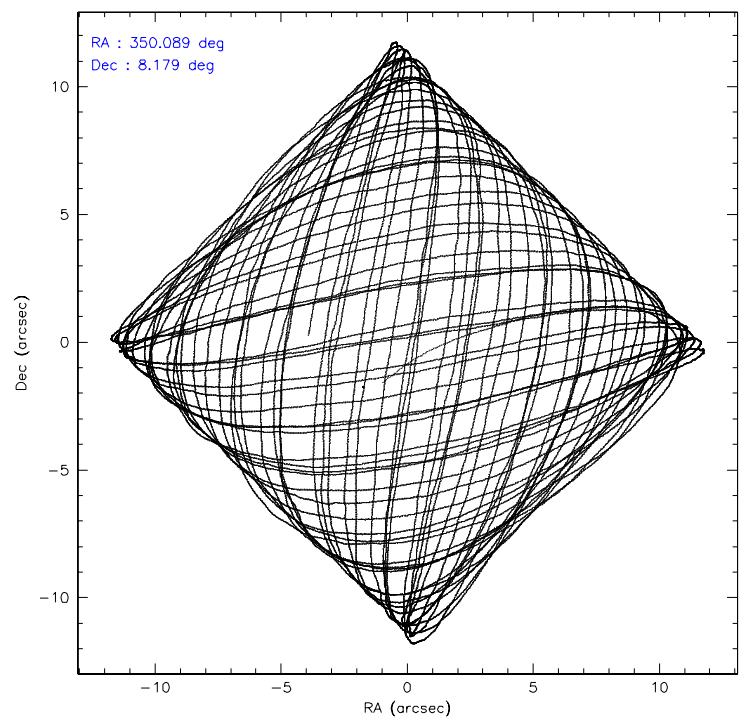
	ccd 0	ccd 1	ccd 2	ccd 3	ccd 6
level 1 events	176142	179109	198789	194104	190312
rejected events	150926	152417	167981	169283	166495
rejected %	85%	85%	84%	87%	87%

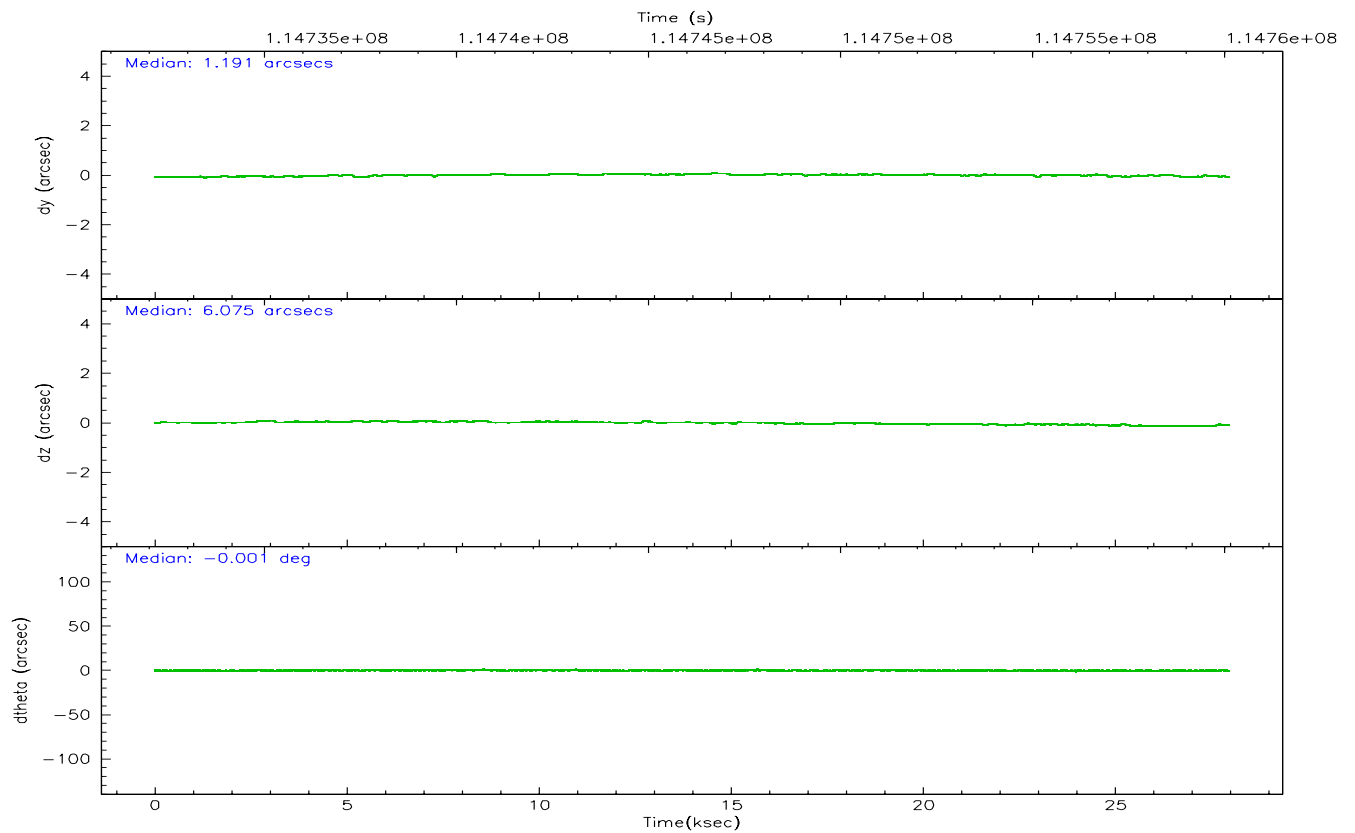
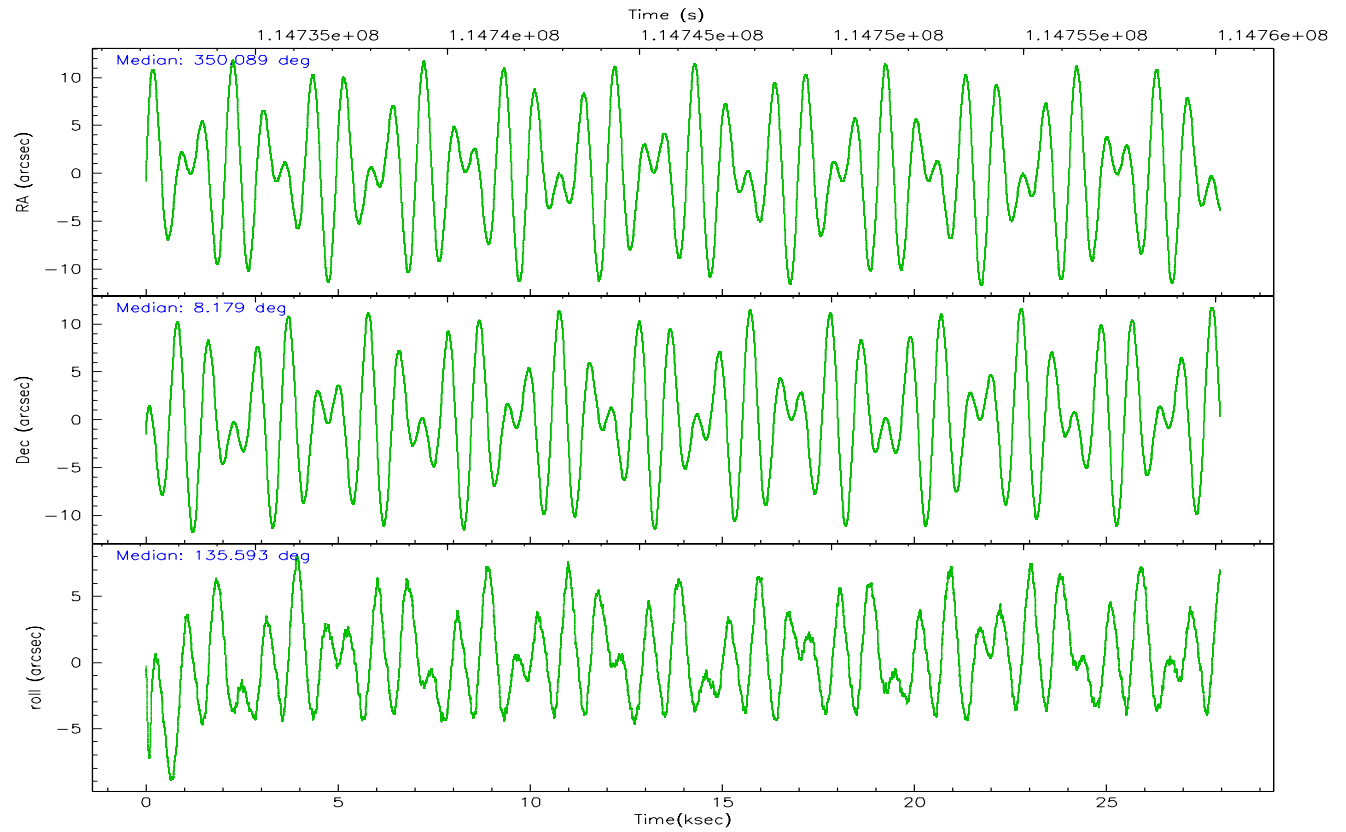
	ccd 0	ccd 1	ccd 2	ccd 3	ccd 6
grade 0 events	11745	12306	16890	11879	10502
	6%	6%	8%	6%	5%
grade 1 events	76	77	113	120	95
	0%	0%	0%	0%	0%
grade 2 events	5066	5100	5507	4771	4654
	2%	2%	2%	2%	2%
grade 3 events	2227	2365	2199	2160	2248
	1%	1%	1%	1%	1%
grade 4 events	2156	2451	2236	2126	2170
	1%	1%	1%	1%	1%
grade 5 events	6529	6962	6226	6992	7426
	3%	3%	3%	3%	3%
grade 6 events	4027	4477	3979	3887	4246
	2%	2%	2%	2%	2%
grade 7 events	144316	145371	161639	162169	158971
	81%	81%	81%	83%	83%

## 2.2 Compared Parameters

Parameter	Planned	Actual	Parameter	Planned	Actual
Instrument	ACIS	ACIS	Obspar format version number	6	6
Detector	ACIS-01236	ACIS-01236	Obspar file type	PREDICTED	ACTUAL
Grating	NONE	NONE	Obspar update status	NONE	UPDATED
Data mode	VFAINT	VFAINT	Number of optional ACIS chips dropped	0	0
Observation mode	POINTING	POINTING	On-chip summing requested	N	N
Pointing RA	350.115024	350.0881768330707	Subarray requested	NONE	NONE
Pointing Dec	8.172574	8.179372946410421	Alternating exposures requested	N	N
Pointing Roll	135.383750	135.5962504930465	Primary exposure time	0.000000	3.1
SIM focus pos (mm)	-0.782348	-0.7809083437167272			
SIM defocus (mm)	0	0.001439871863259334			
SIM translation stage pos (mm)	-226.592463	-226.5875806612856			
SIM translation stage offset (mm)	-7	-7.004872341644045			
Observation start time	114733116.184000	114731774.41683			
Observation start date	2001-08-20T22:17:32	2001-08-20T21:56:14			
Observation end time	114760116.184000	114760741.43047			
Observation end date	2001-08-21T05:47:32	2001-08-21T05:59:01			
Read mode	TIMED	TIMED			

## 2.3 Aspect





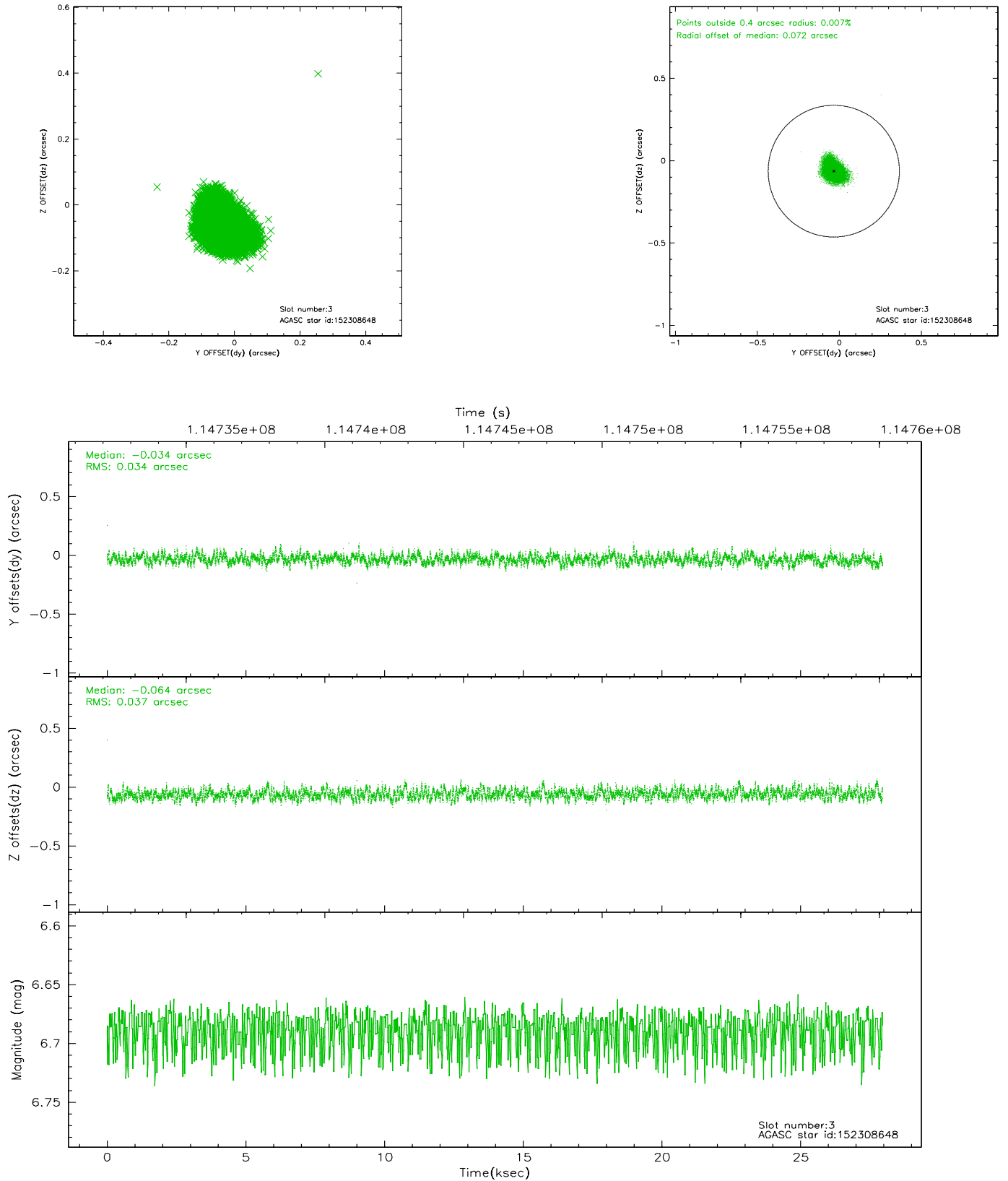
### Slot Statistics

slot	status	id	mag	n_pts	med_dy	med_dz	dr1	dr2	ra	dec	mean_y	mean_z
0	FID	ACIS-I-1	7.24	6817	0.045	-0.014	0.006	0.010	0.000000	0.000000	938.55	-973.25
1	FID	ACIS-I-5	7.23	6817	-0.138	0.071	0.006	0.010	0.000000	0.000000	-1809.65	924.30
2	FID	ACIS-I-6	7.27	6817	0.001	0.014	0.007	0.011	0.000000	0.000000	404.00	1568.82
3	GUIDE	152308648	6.69	13632	-0.034	-0.064	0.054	0.086	349.950276	7.982087	-62.09	901.11
4	GUIDE	152187192	8.90	13631	-0.181	-0.104	0.064	0.103	349.378103	8.213055	1974.34	1739.39
5	GUIDE	152310496	8.99	13627	0.018	0.078	0.072	0.114	350.630549	8.225229	-1171.81	-1425.19
6	GUIDE	152320064	9.29	13629	0.131	0.103	0.081	0.129	350.730376	8.067746	-1823.82	-1272.86
7	GUIDE	152186792	9.31	13605	0.066	-0.015	0.082	0.133	349.781832	8.237480	1010.87	667.67

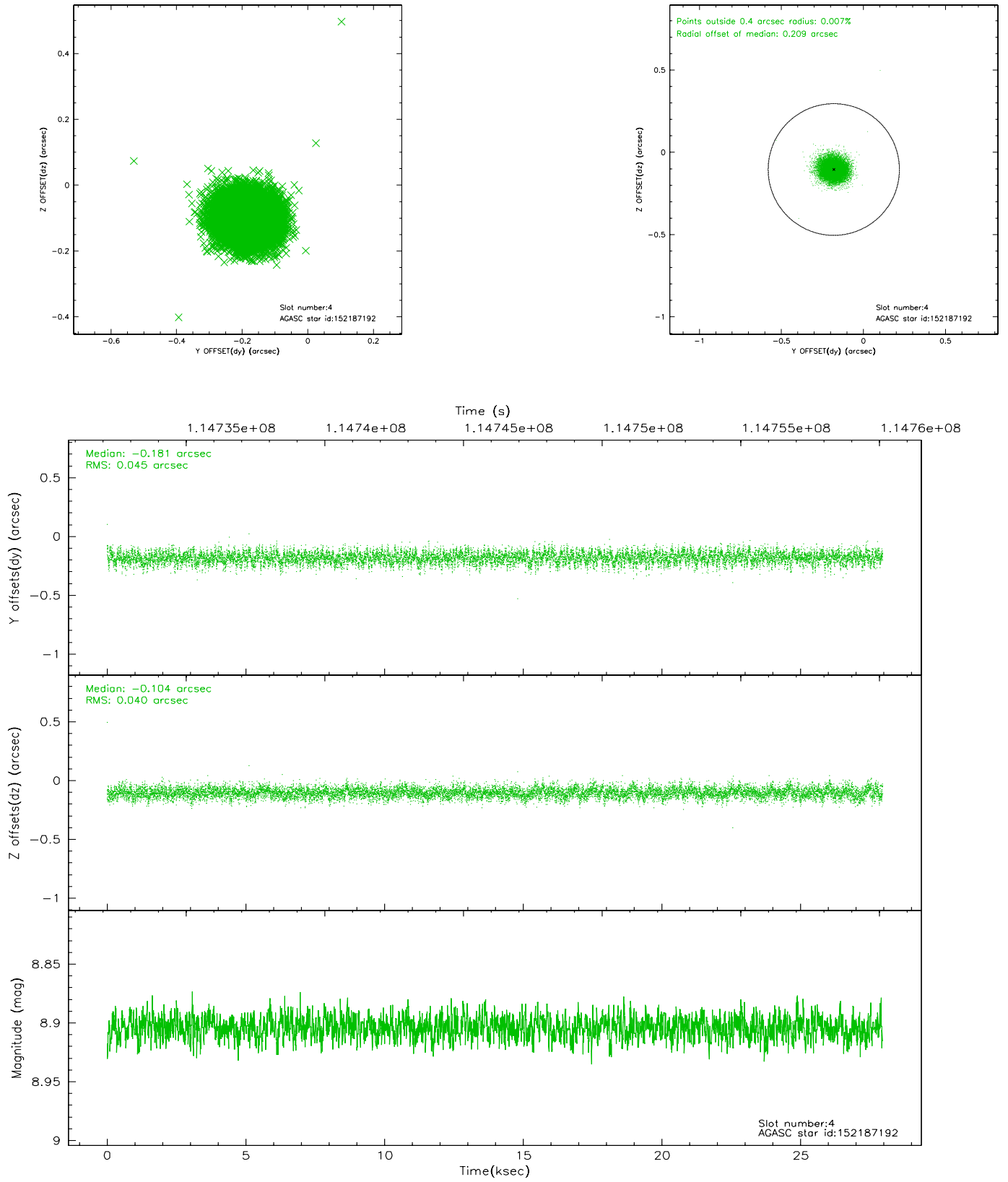


## 2.4 Star Slots

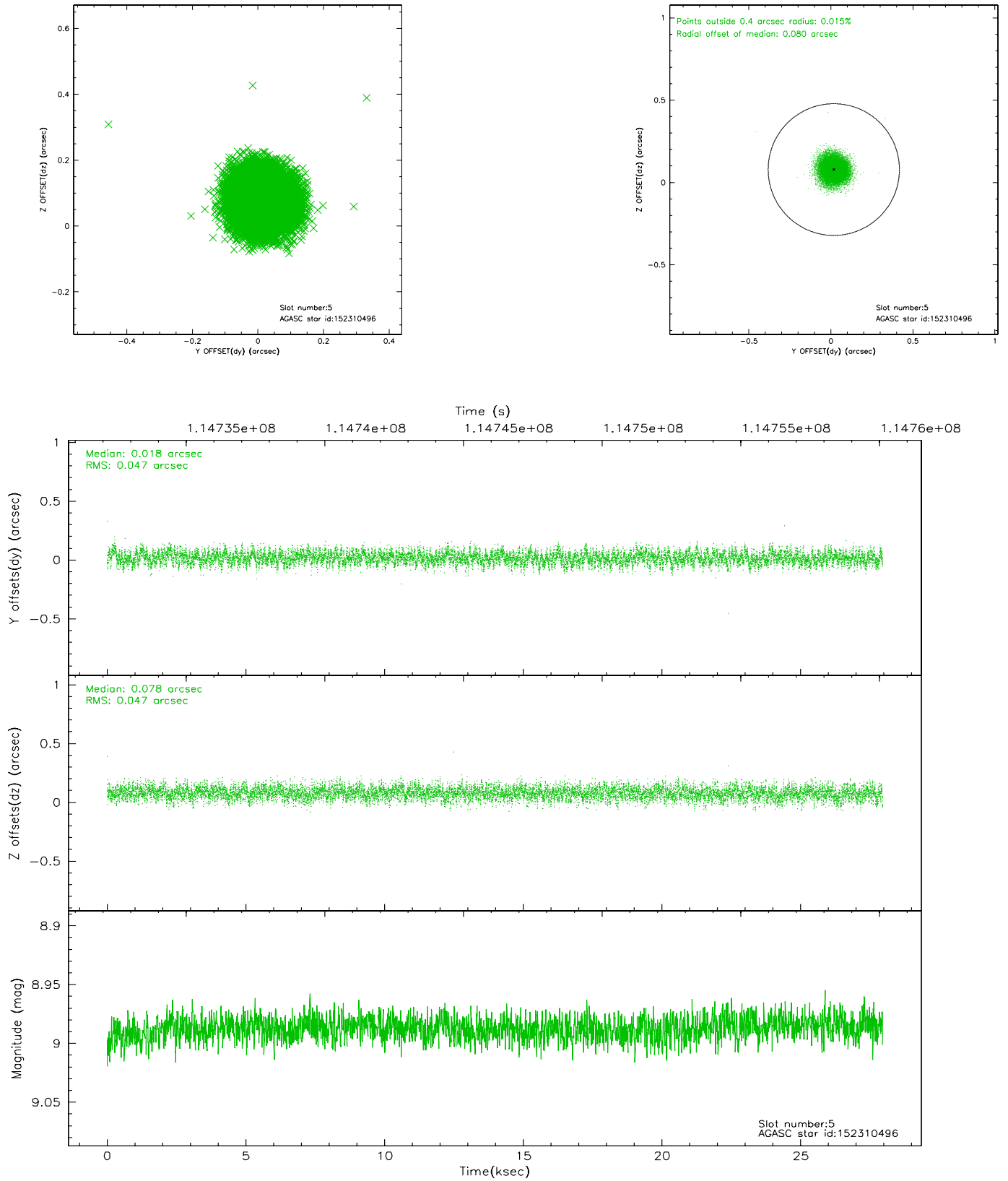
### 2.4.1 Slot 3



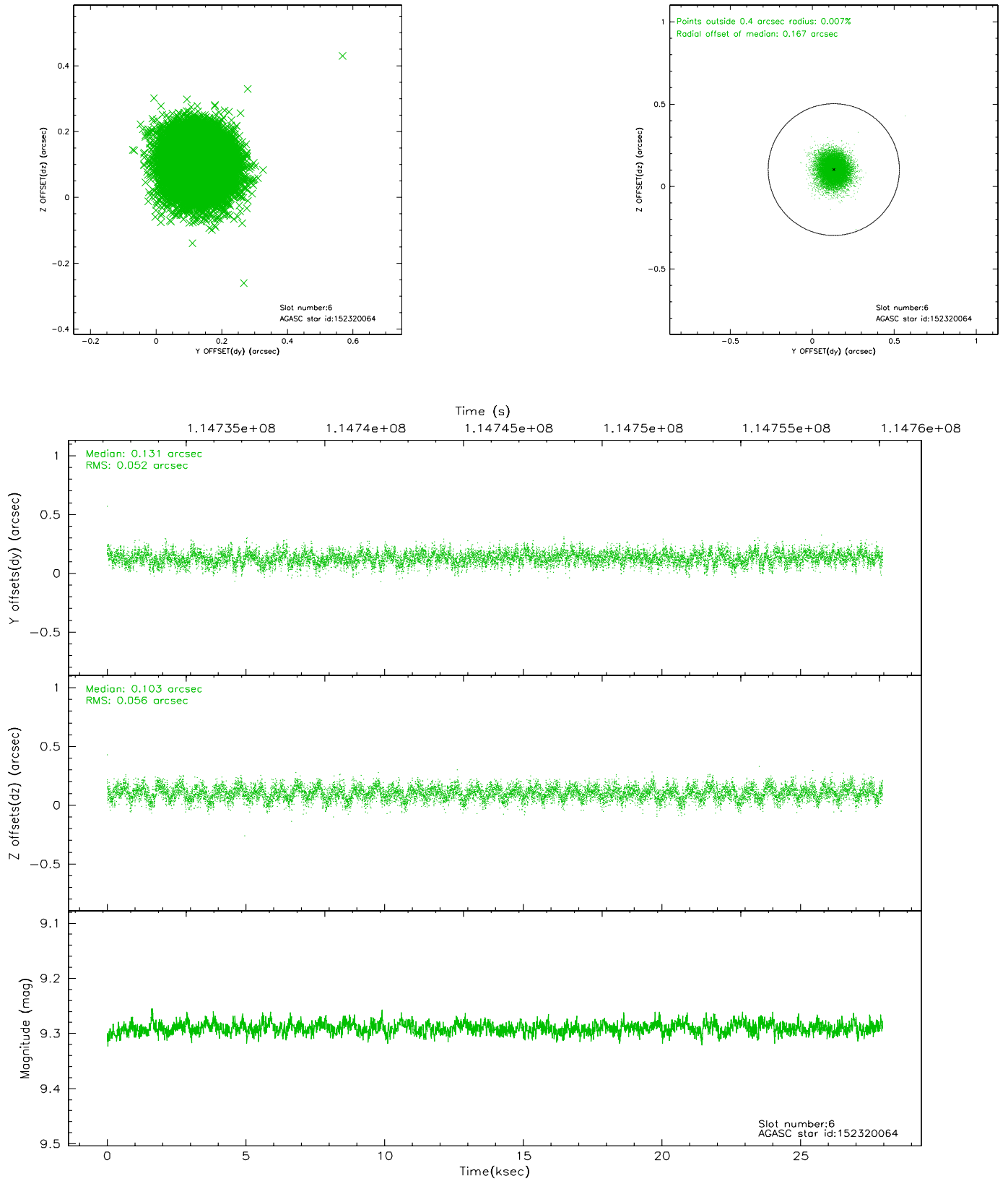
## 2.4.2 Slot 4



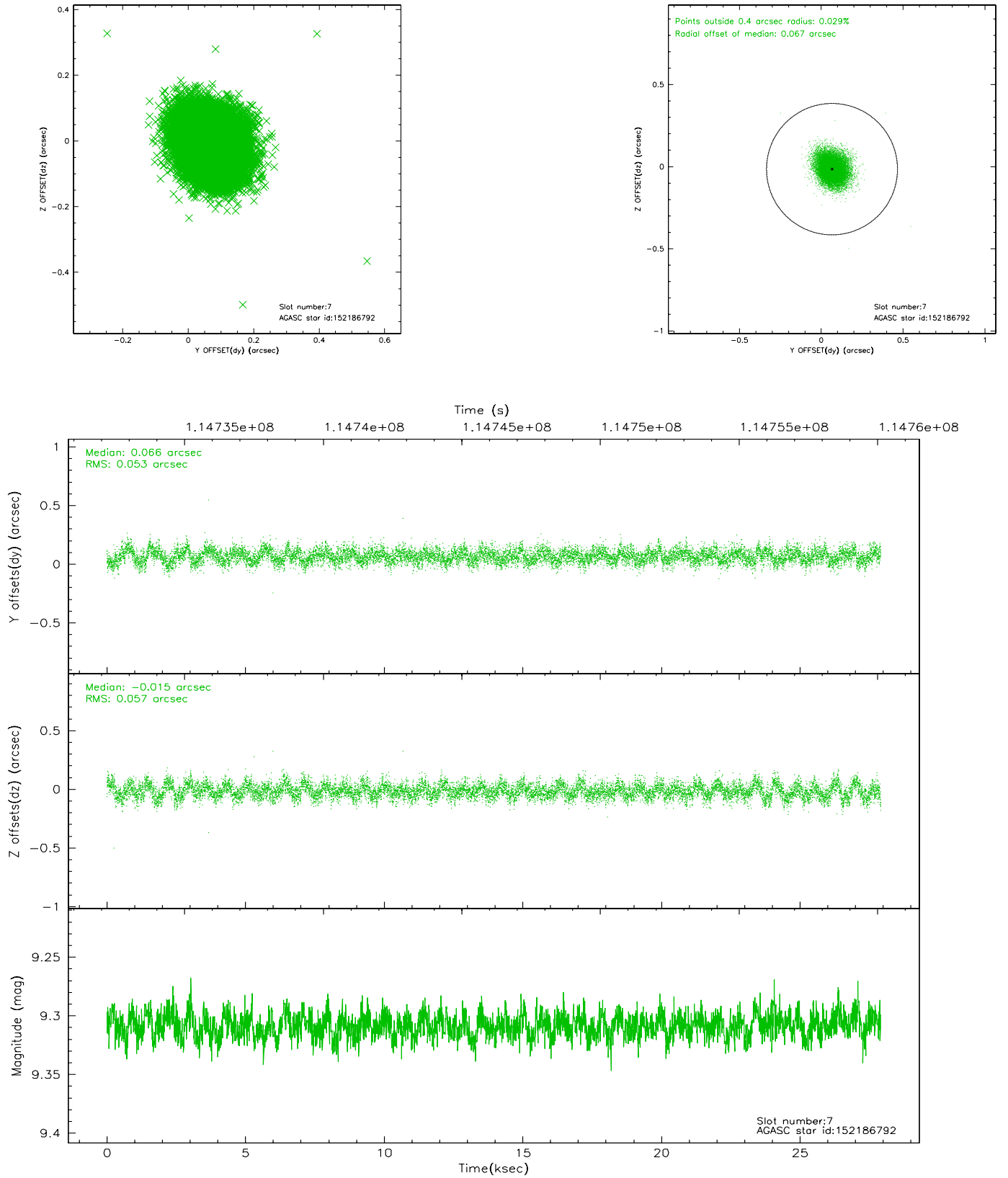
### 2.4.3 Slot 5



## 2.4.4 Slot 6

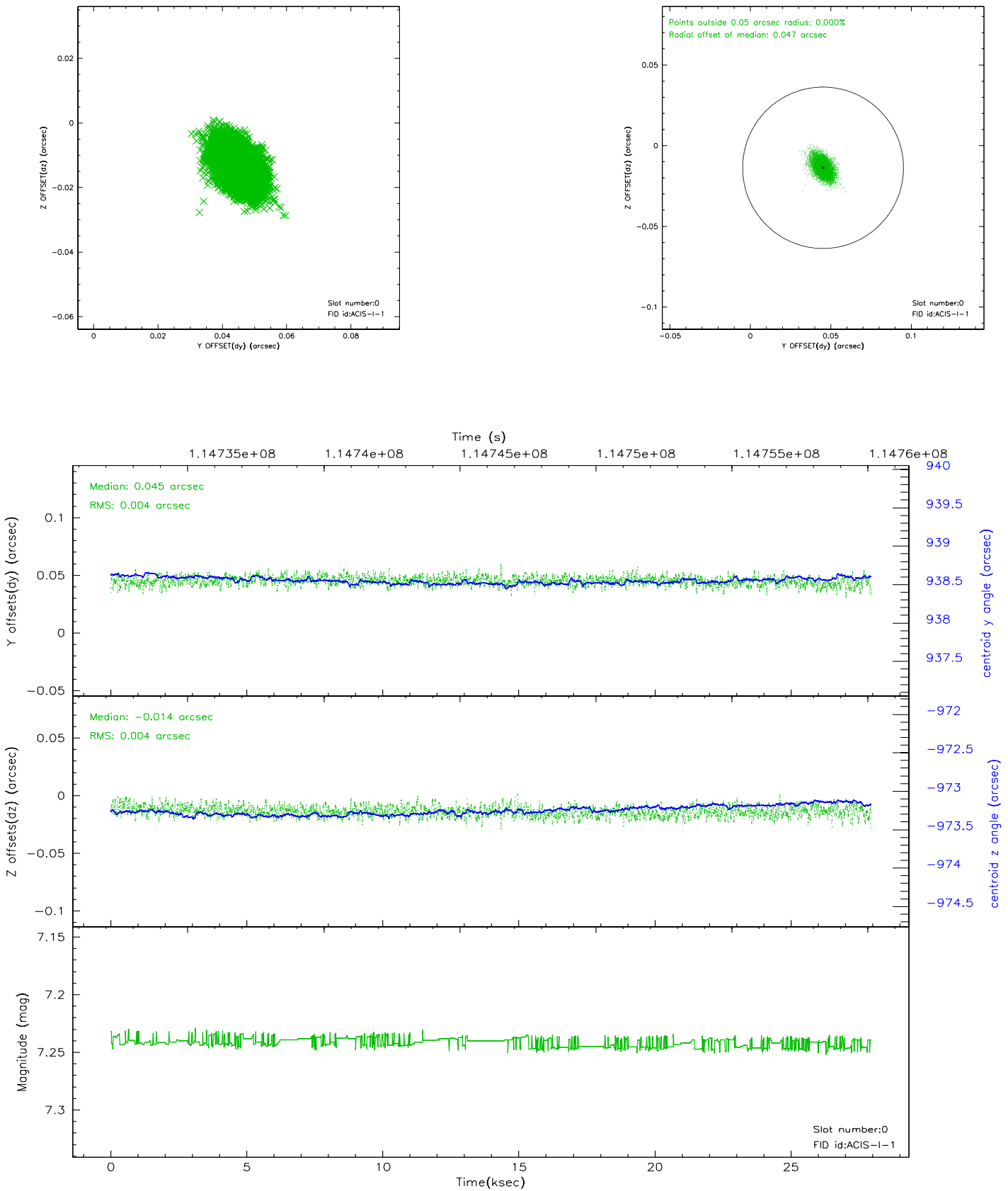


## 2.4.5 Slot 7

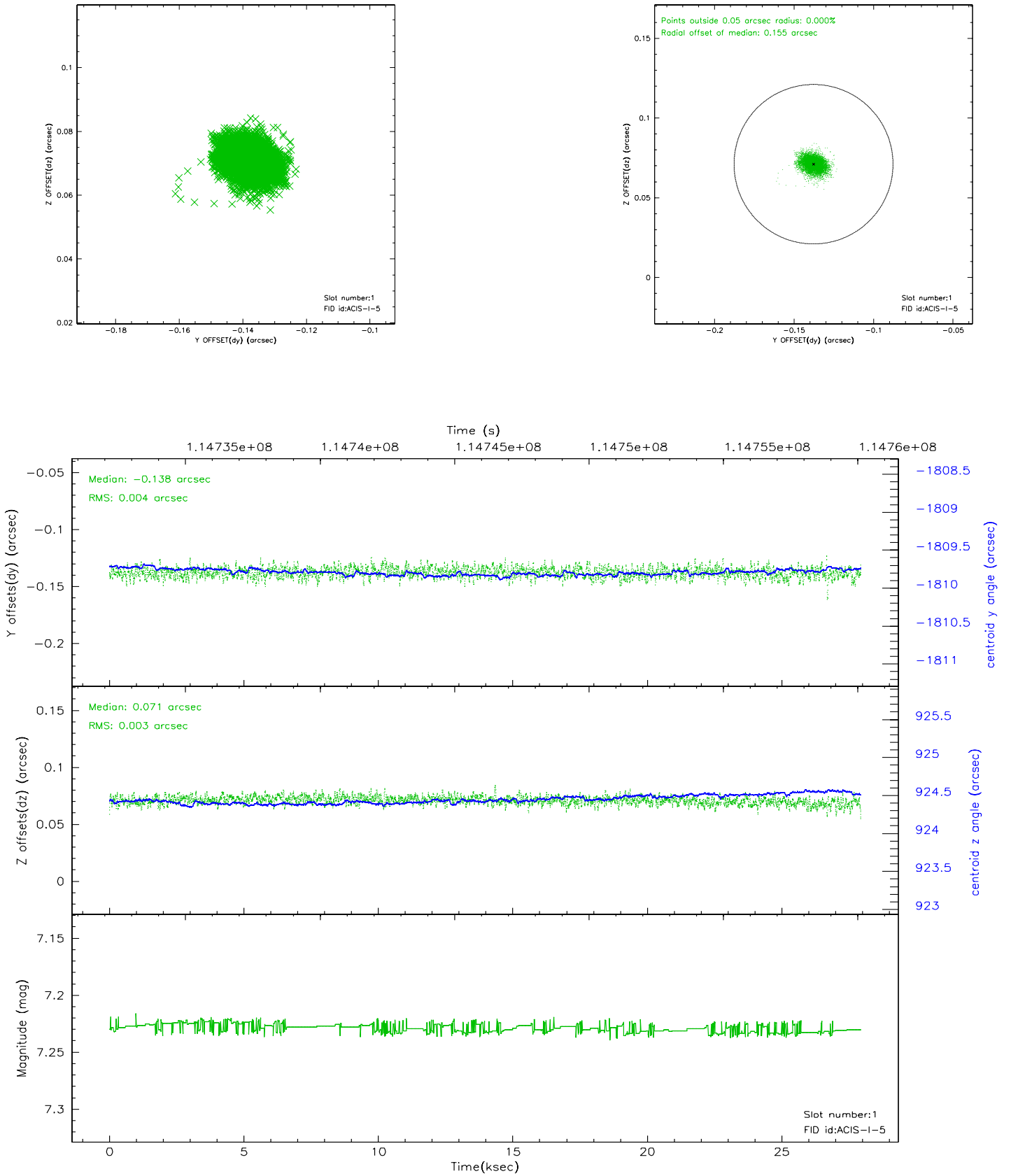


## 2.5 FID Slots

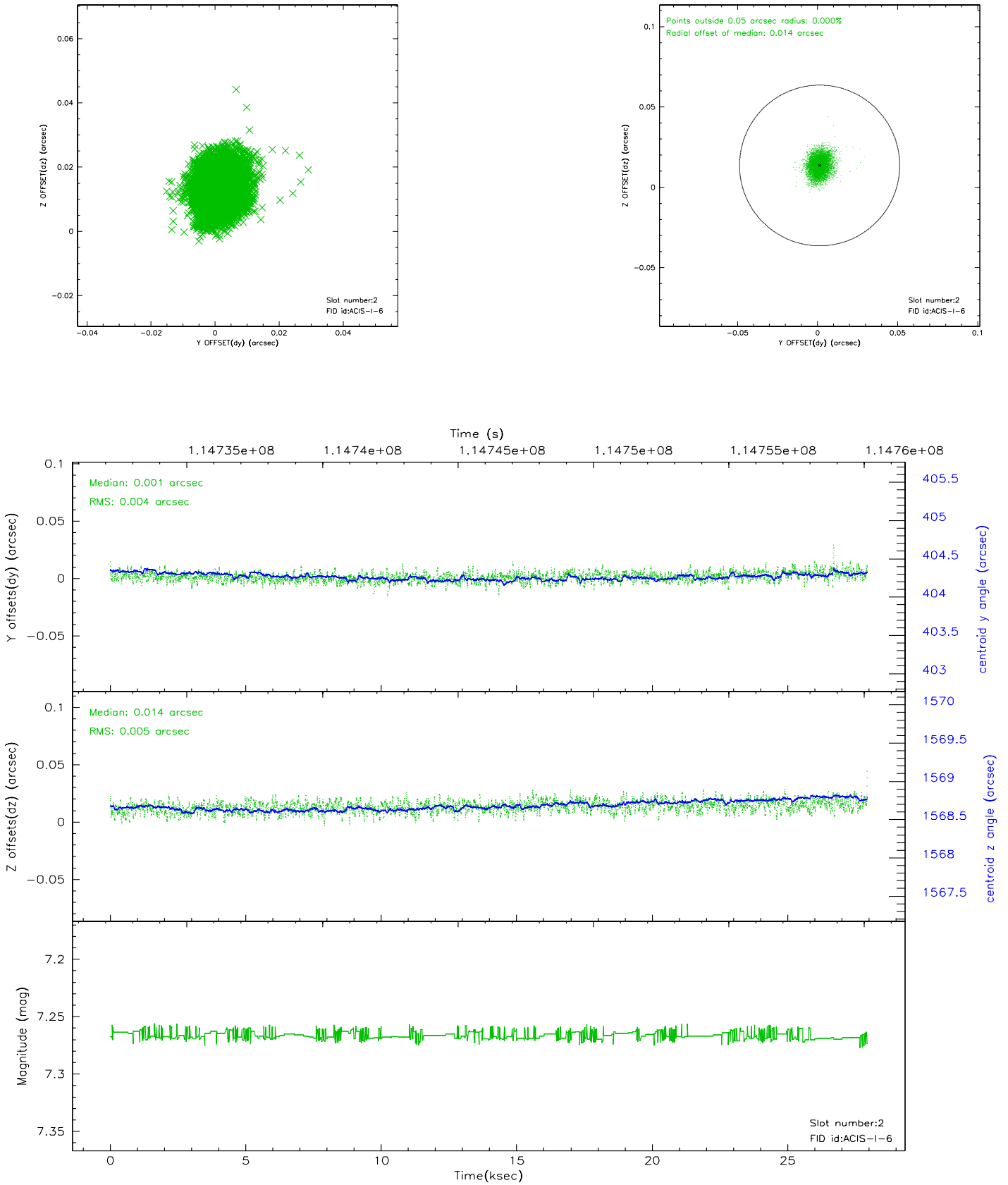
### 2.5.1 Slot 0



## 2.5.2 Slot 1

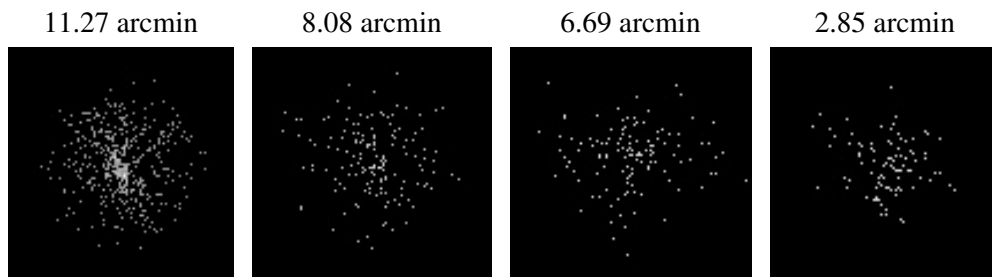


### 2.5.3 Slot 2





### 3 Point Sources



# A Summary

## A.1 Status

V&V Scientist	Jen Lauer
V&V Date (YYYY-MM-DD)	2006.12.21
V&V Edition	1
V&V Disposition and Status	OK
V&V Charge Time	27.094

## A.2 Comments

Focal plane temperature is warmer than -118.7 C degrees during the first 4 ksec of this observation. The ACIS spectral response calibration for the front-illuminated chips is less accurate at these warmer temperatures than it is at -119.7 C. The back-illuminatd chips are not affected at the focal plane temperatures recorded for this observation. Users whose science objectives depend on the most accurate spectral response (i.e.: fitting line-rich spectra) may notice an effect. Users whose science objectives do not depend on the most accurate spectral response should not notice an effect.