

# V&V Reference Report

## L2 ASCDS Version : 7.6.9

Observation 2073 - L2 Version 001  
Chandra X-Ray Center

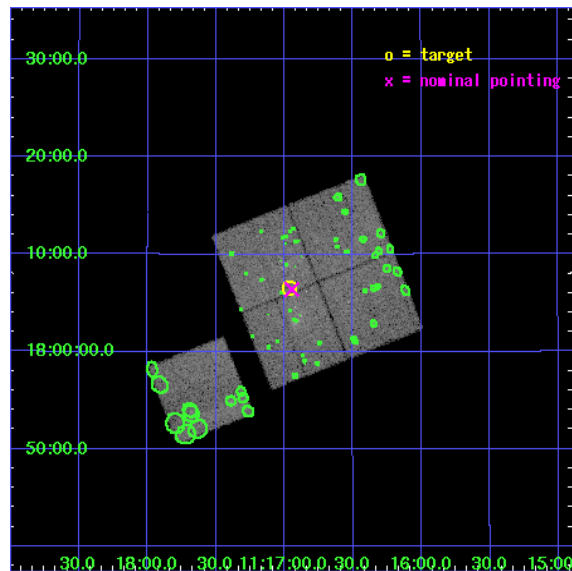
L2 Processing Date : Nov 28 2006

## Contents

<b>1</b>	<b>Front</b>	<b>2</b>
<b>2</b>	<b>OBI</b>	<b>3</b>
2.1	OBI . . . . .	3
2.1.1	Images . . . . .	3
2.1.2	Bias . . . . .	3
2.1.3	Parameters . . . . .	4
2.1.4	Events . . . . .	4
2.2	Compared Parameters . . . . .	5
2.3	Aspect . . . . .	6
2.4	Star Slots . . . . .	9
2.4.1	Slot 3 . . . . .	9
2.4.2	Slot 4 . . . . .	10
2.4.3	Slot 5 . . . . .	11
2.4.4	Slot 6 . . . . .	12
2.4.5	Slot 7 . . . . .	13
2.5	FID Slots . . . . .	14
2.5.1	Slot 0 . . . . .	14
2.5.2	Slot 1 . . . . .	15
2.5.3	Slot 2 . . . . .	16
<b>3</b>	<b>Point Sources</b>	<b>17</b>
<b>A</b>	<b>Summary</b>	<b>18</b>
A.1	Status . . . . .	18
A.2	Comments . . . . .	18

# 1 Front

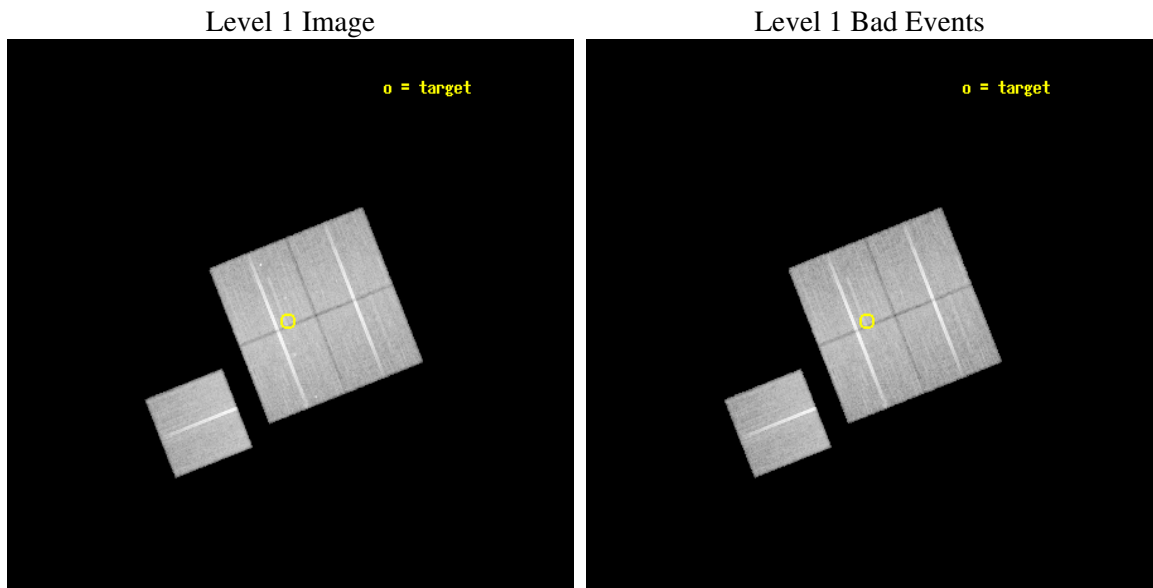
seq_num	600207
obs_id	2073
title	IN SEARCH OF ``NORMAL" ELLIPTICAL GALAXIES
observer	Dr. William Forman
object	NGC 3607/NGC 3608
dtcycle	0
cycle	P
ra_targ	169.24
dec_targ	18.11
ra_nom	169.23649517928
dec_nom	18.106614876529
roll_nom	248.43257683132
revision	2
ontime	39004.036104023
livetime	38494.419657971
ontime0	39007.177024335
ontime1	39013.458964735
ontime2	39000.895133778
ontime3	39004.036104023
ontime6	39000.895153686
l2events	130340



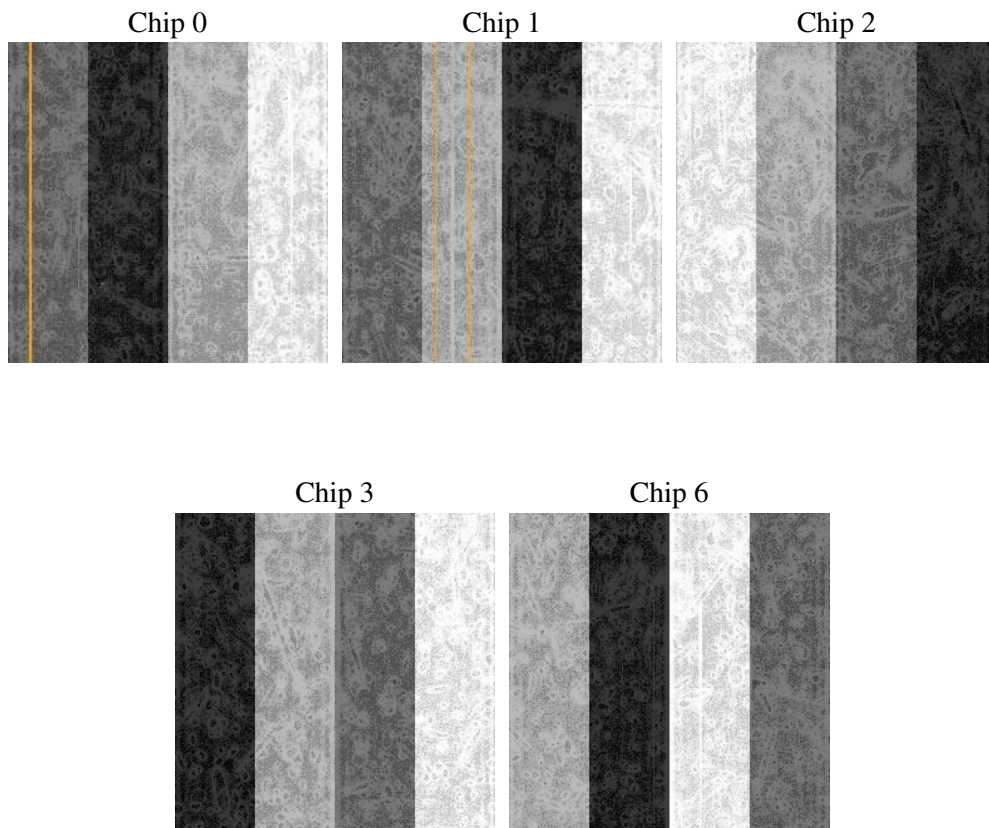
## 2 OBI

### 2.1 OBI

#### 2.1.1 Images



#### 2.1.2 Bias



### 2.1.3 Parameters

obi_num	0
ascdsver	7.6.9
caldbver	3.2.4
date	2006-11-28T08:05:57
revision	2

sched_exp_time	38886.043000
ontime	39008.064200416
ontime0	39011.20514065
ontime1	39017.487081051
ontime2	39004.923250094
ontime3	39008.064200416
ontime6	39004.923270002
l1events	1244183

### 2.1.4 Events

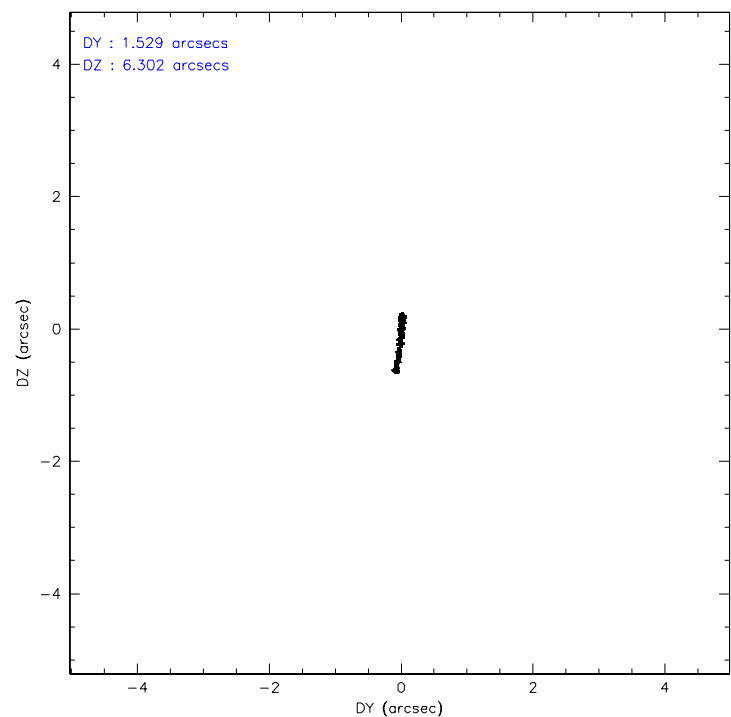
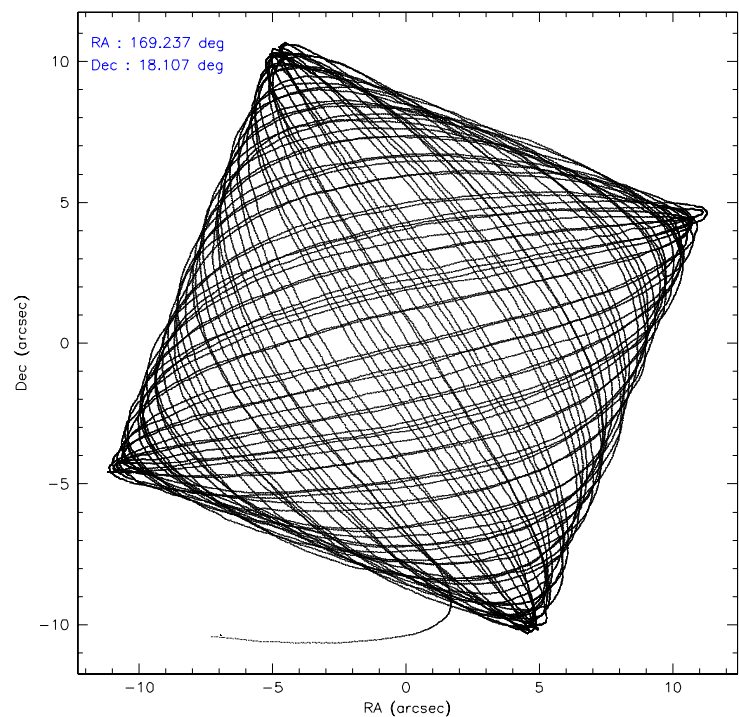
	ccd 0	ccd 1	ccd 2	ccd 3	ccd 6
level 1 events	235658	239222	260297	256970	252036
rejected events	206245	208390	227520	226366	224012
rejected %	87%	87%	87%	88%	88%

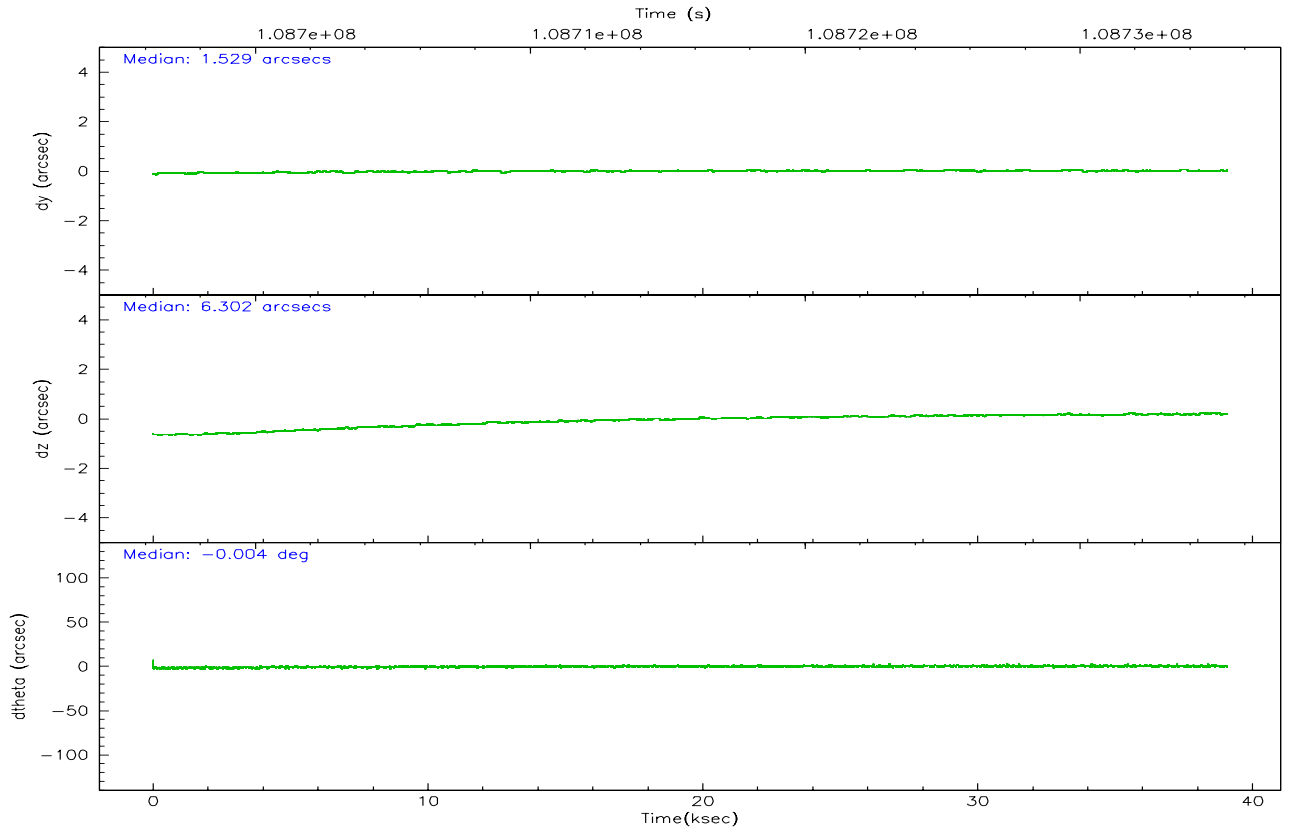
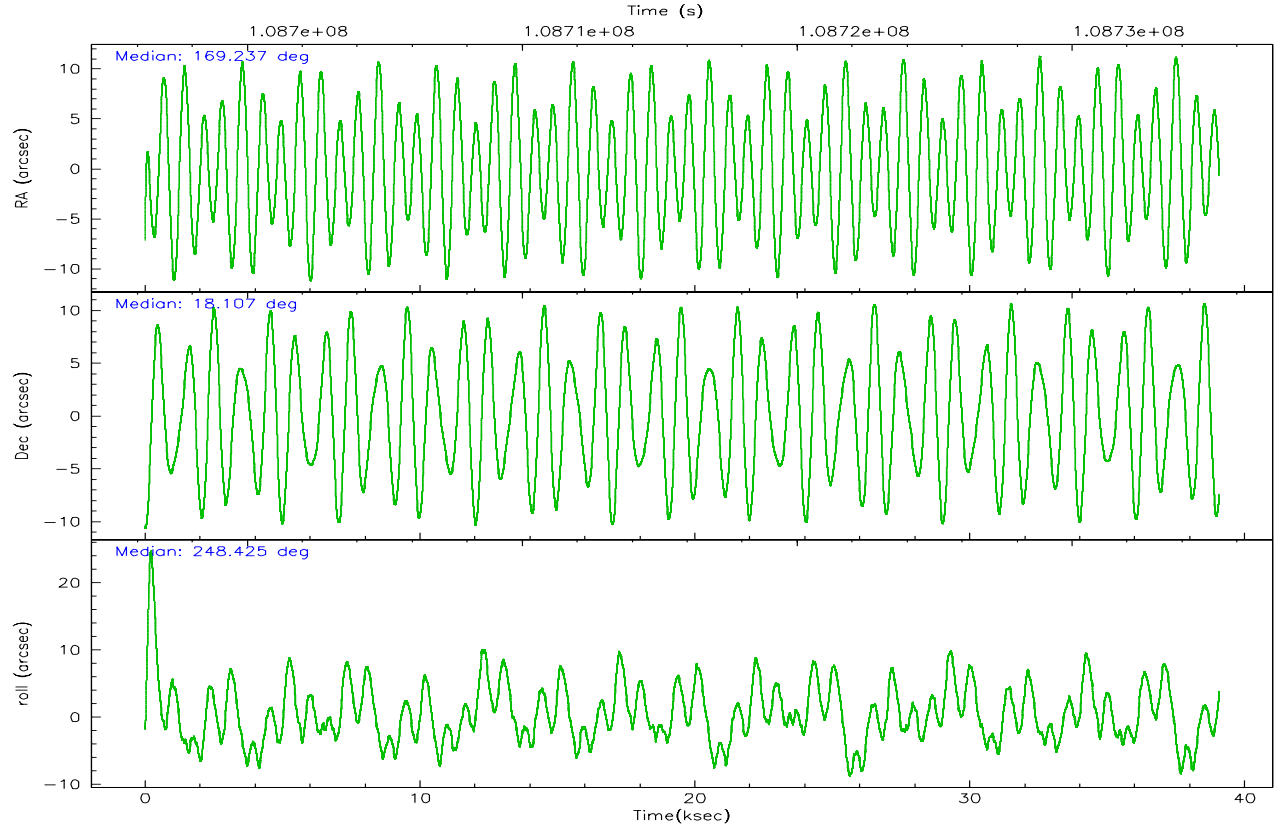
	ccd 0	ccd 1	ccd 2	ccd 3	ccd 6
grade 0 events	12605	12493	15971	13893	11040
	5%	5%	6%	5%	4%
grade 1 events	110	122	124	104	92
	0%	0%	0%	0%	0%
grade 2 events	6254	6223	6422	5887	5664
	2%	2%	2%	2%	2%
grade 3 events	2872	3233	2731	2800	2933
	1%	1%	1%	1%	1%
grade 4 events	2661	3250	2689	2802	2800
	1%	1%	1%	1%	1%
grade 5 events	9157	9901	8687	9698	10435
	3%	4%	3%	3%	4%
grade 6 events	5023	5634	4968	5227	5589
	2%	2%	1%	2%	2%
grade 7 events	196976	198366	218705	216559	213483
	83%	82%	84%	84%	84%

## 2.2 Compared Parameters

Parameter	Planned	Actual	Parameter	Planned	Actual
Instrument	ACIS	ACIS	Obspar format version number	6	6
Detector	ACIS-01236	ACIS-01236	Obspar file type	PREDICTED	ACTUAL
Grating	NONE	NONE	Obspar update status	NONE	UPDATED
Data mode	VFAINT	VFAINT	Number of optional ACIS chips dropped	0	0
Observation mode	POINTING	POINTING	On-chip summing requested	N	N
Pointing RA	169.232238	169.2364951792779	Subarray requested	NONE	NONE
Pointing Dec	18.133761	18.10661487652935	Alternating exposures requested	N	N
Pointing Roll	248.225219	248.4325768313191	Primary exposure time	0.000000	3.1
SIM focus pos (mm)	-0.782348	-0.7809083437167272			
SIM defocus (mm)	0	0.001439871863259334			
SIM translation stage pos (mm)	-227.092463	-227.0904437215976			
SIM translation stage offset (mm)	-6.5	-6.50200928133205			
Observation start time	108696471.184000	108695499.4678			
Observation start date	2001-06-12T01:26:47	2001-06-12T01:11:39			
Observation end time	108735357.184000	108735671.26937			
Observation end date	2001-06-12T12:14:53	2001-06-12T12:21:11			
Read mode	TIMED	TIMED			

2.3 Aspect



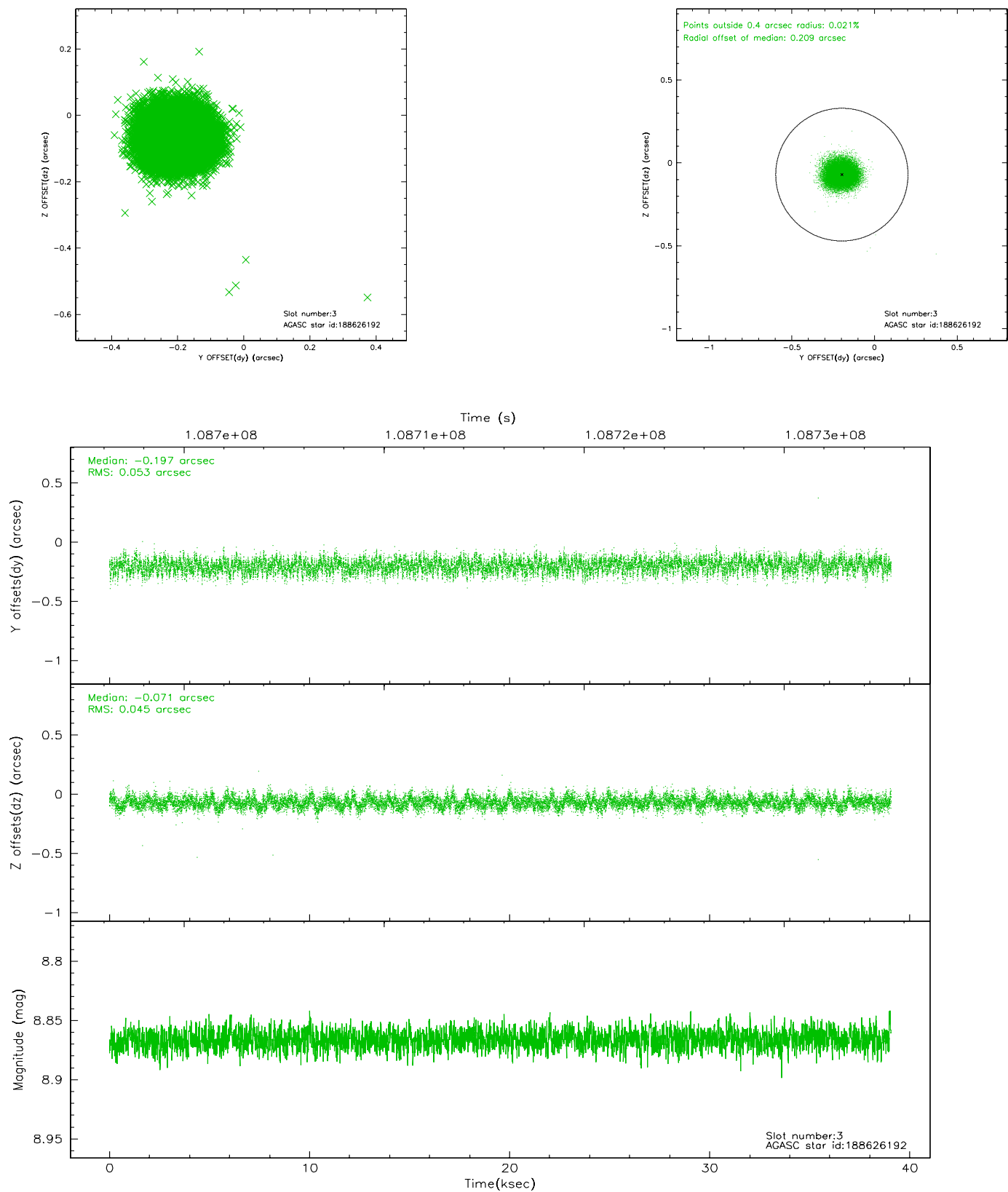


### Slot Statistics

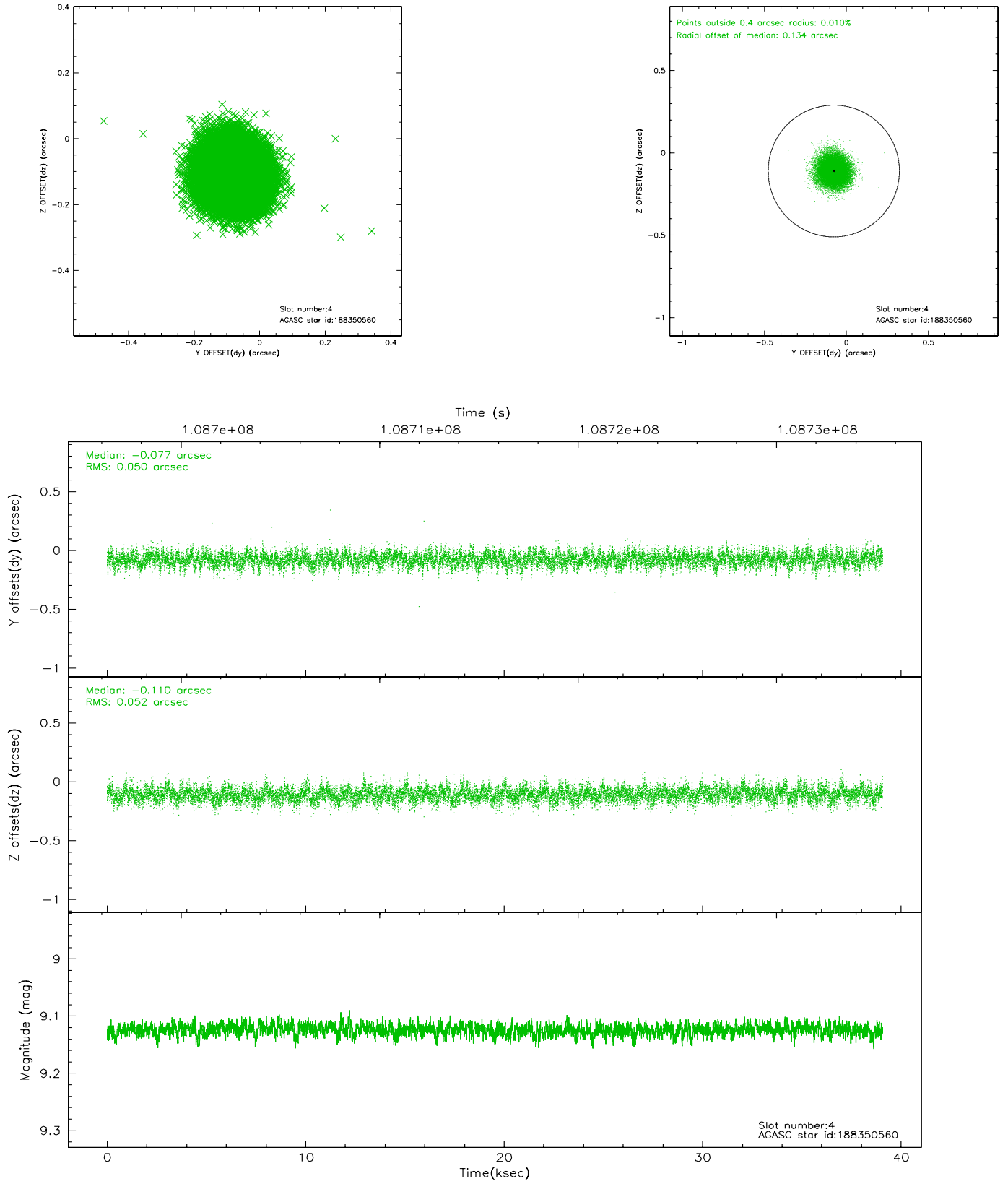
slot	status	id	mag	n_pts	med_dy	med_dz	dr1	dr2	ra	dec	mean_y	mean_z
0	FID	ACIS-I-2	7.17	9529	-0.054	-0.012	0.009	0.016	0.000000	0.000000	-756.35	-968.58
1	FID	ACIS-I-4	7.16	9530	-0.065	0.041	0.006	0.011	0.000000	0.000000	2157.61	937.65
2	FID	ACIS-I-5	7.23	9531	0.018	0.040	0.009	0.014	0.000000	0.000000	-1809.79	934.60
3	GUIDE	188626192	8.87	19060	-0.197	-0.071	0.074	0.117	169.132723	18.856452	-2289.35	-1280.76
4	GUIDE	188350560	9.12	19055	-0.077	-0.110	0.077	0.124	169.125610	18.641654	-1562.16	-1016.81
5	GUIDE	188371152	10.00	19039	0.130	0.067	0.138	0.230	169.317956	17.570920	1773.44	1024.75
6	GUIDE	188358160	10.31	19042	0.126	-0.056	0.126	0.208	168.610775	18.068520	1005.32	-1889.47
7	GUIDE	188352832	9.88	19050	0.017	0.166	0.124	0.202	169.850472	18.107090	-697.94	1998.35

## 2.4 Star Slots

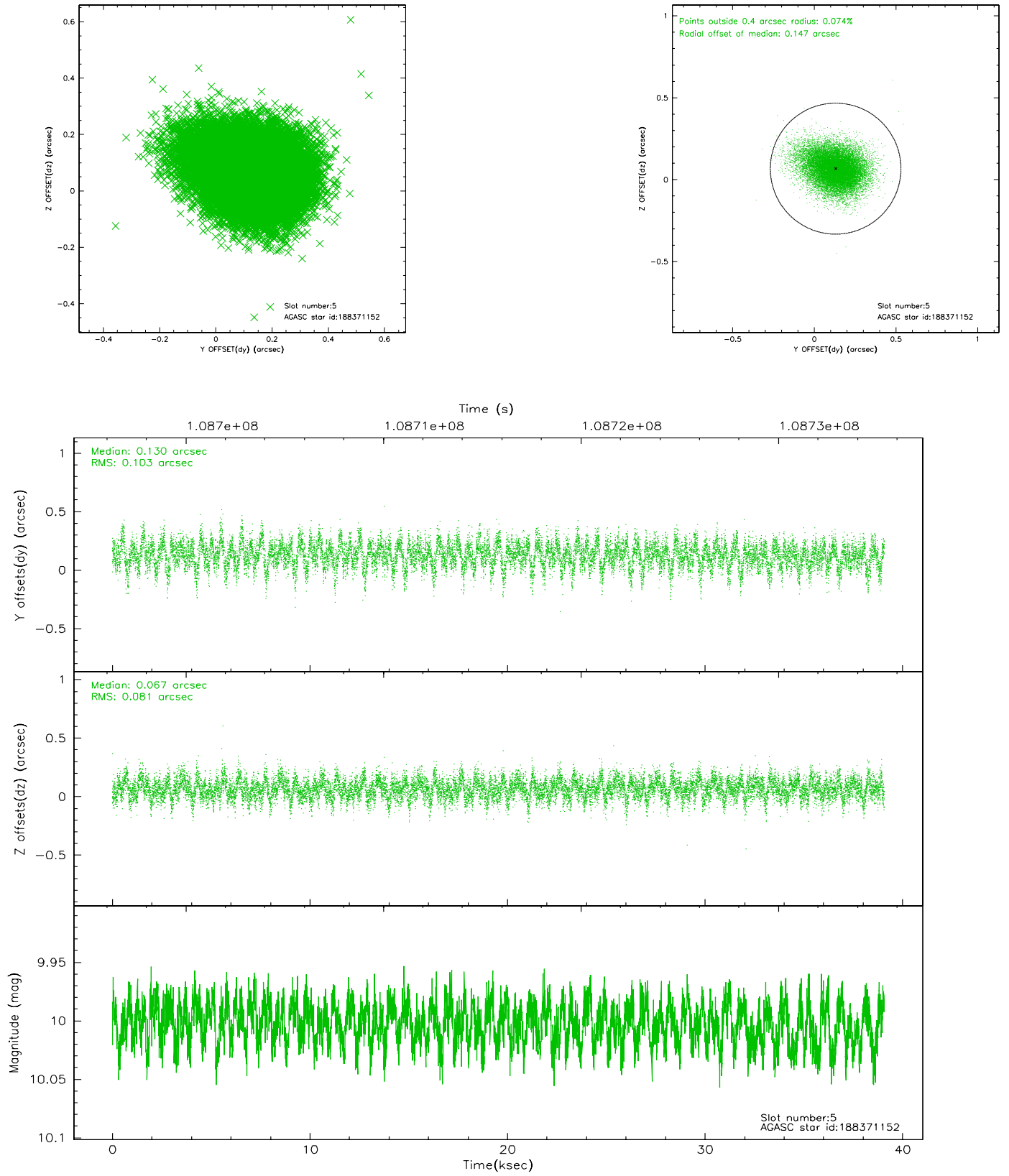
### 2.4.1 Slot 3



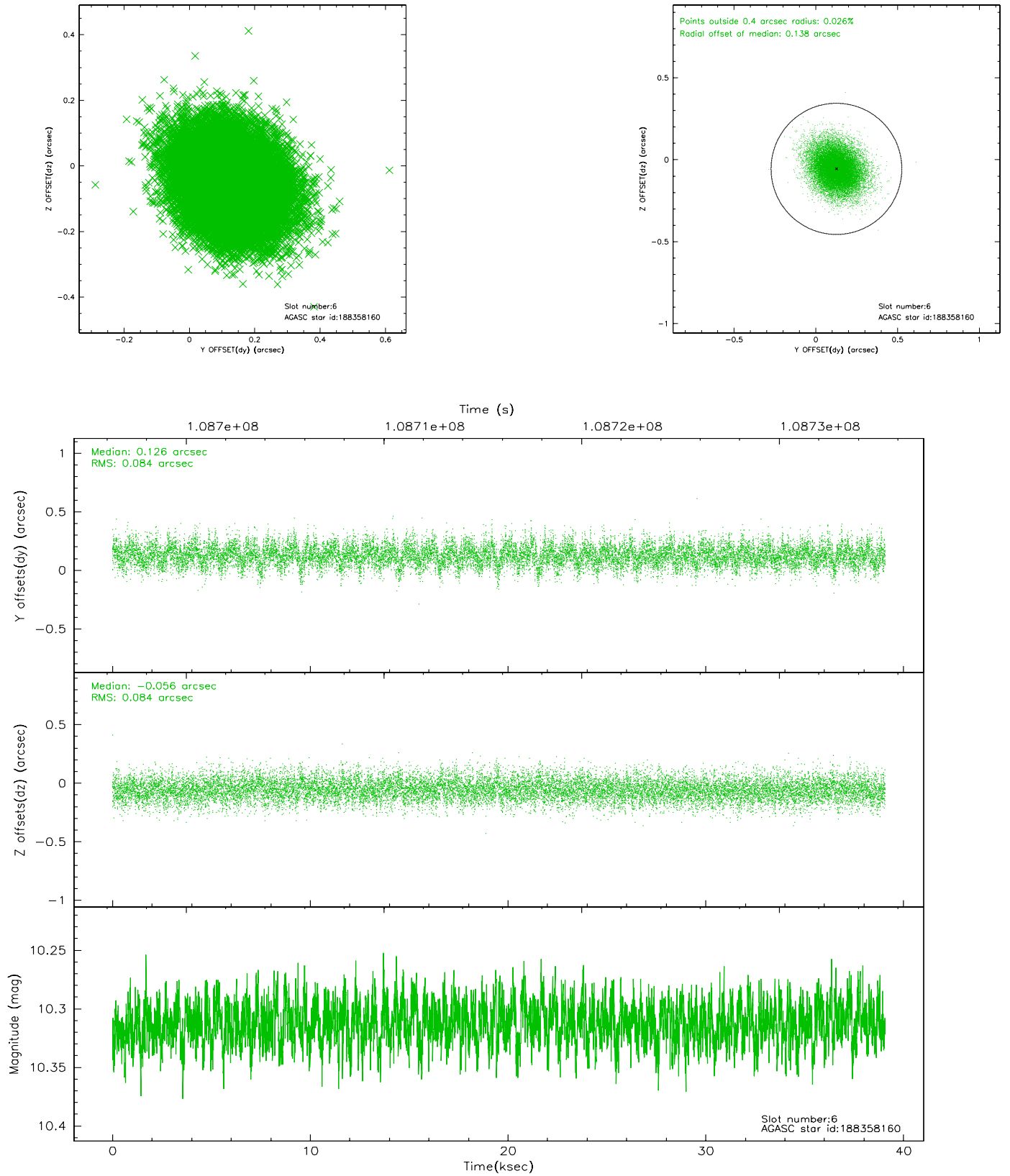
## 2.4.2 Slot 4



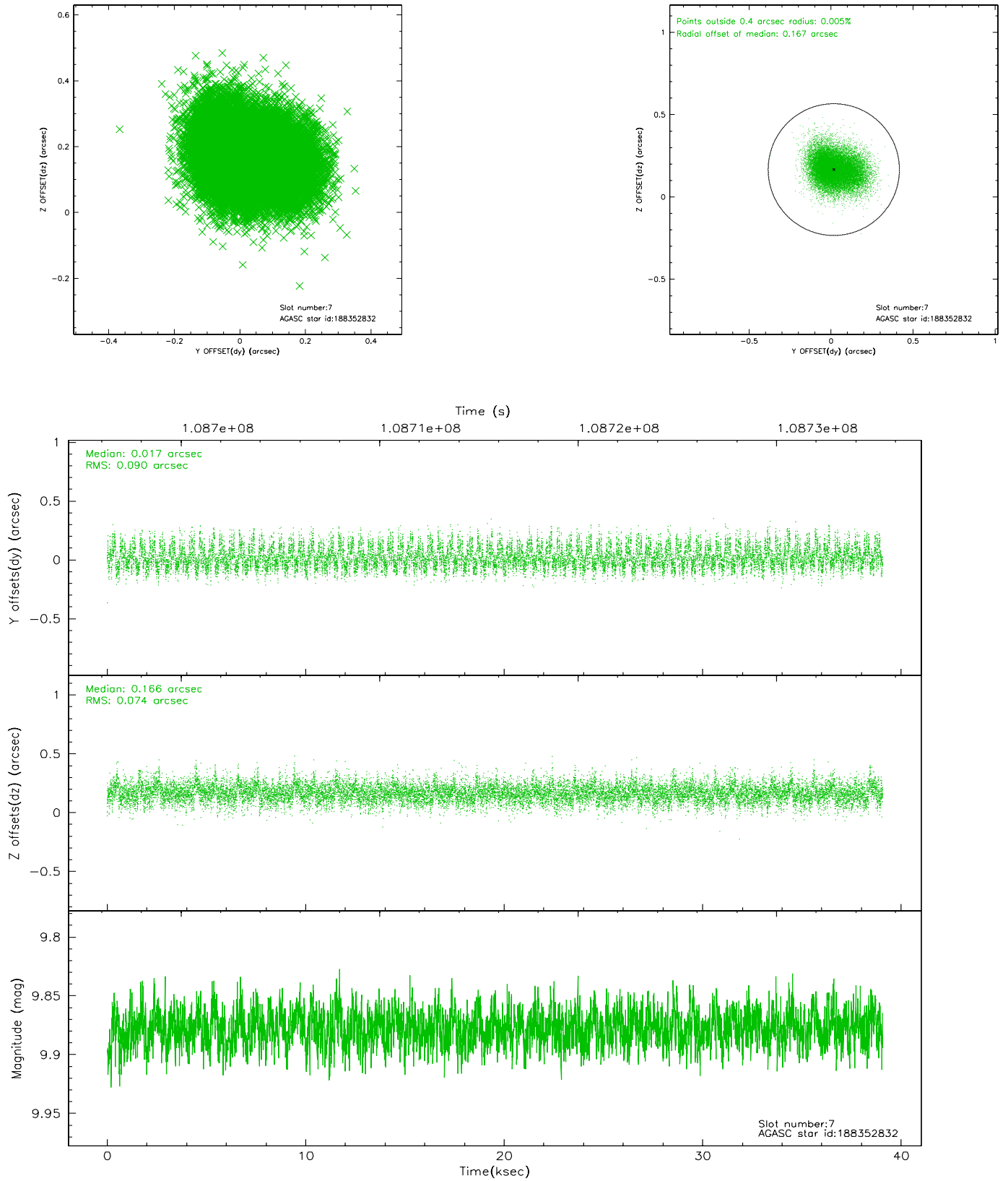
### 2.4.3 Slot 5



## 2.4.4 Slot 6

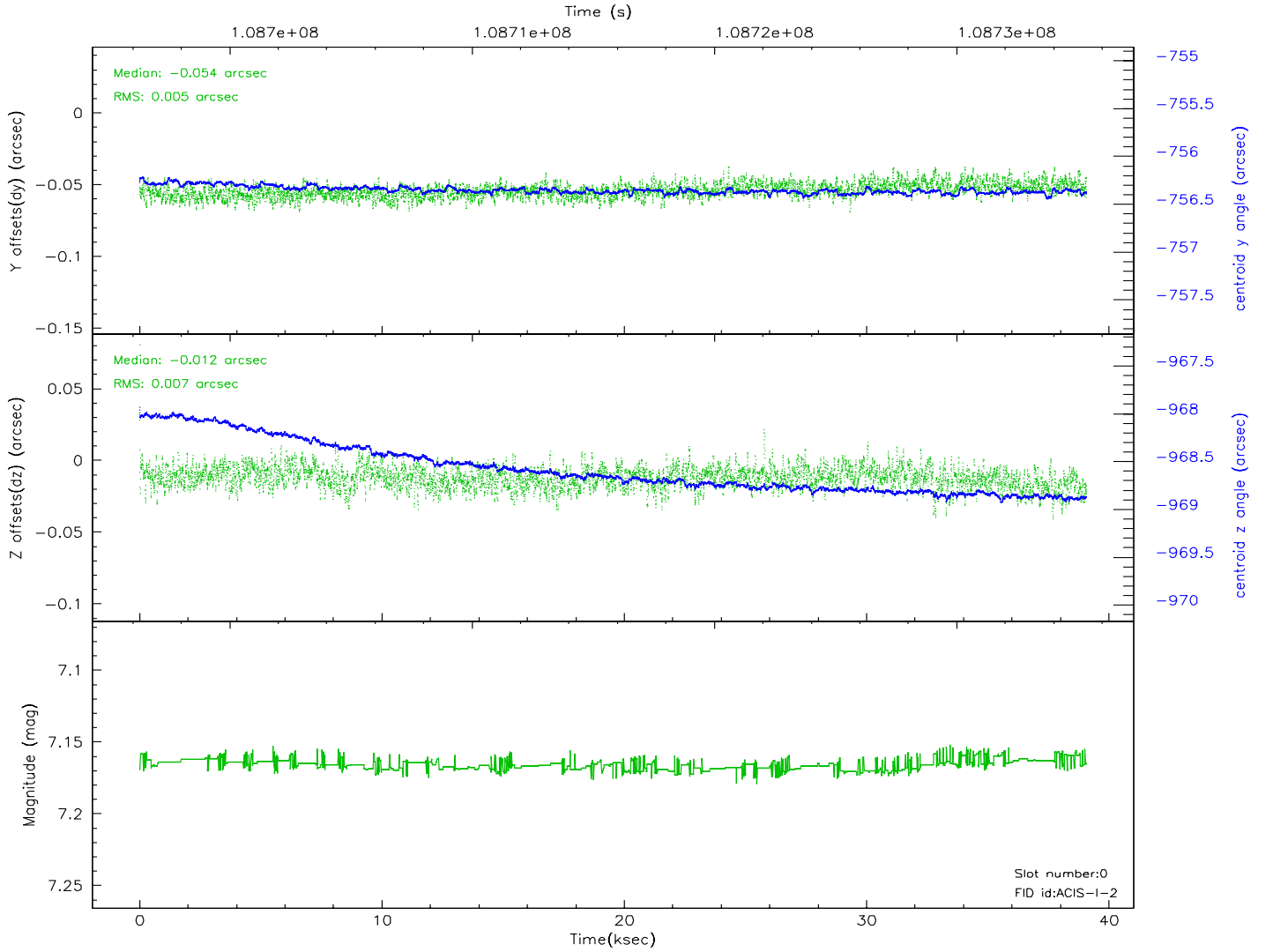
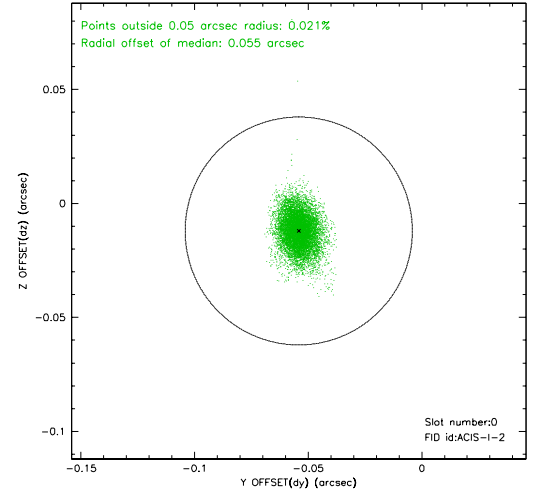
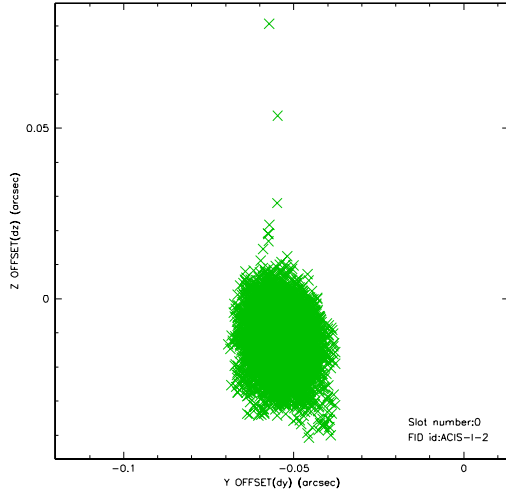


## 2.4.5 Slot 7

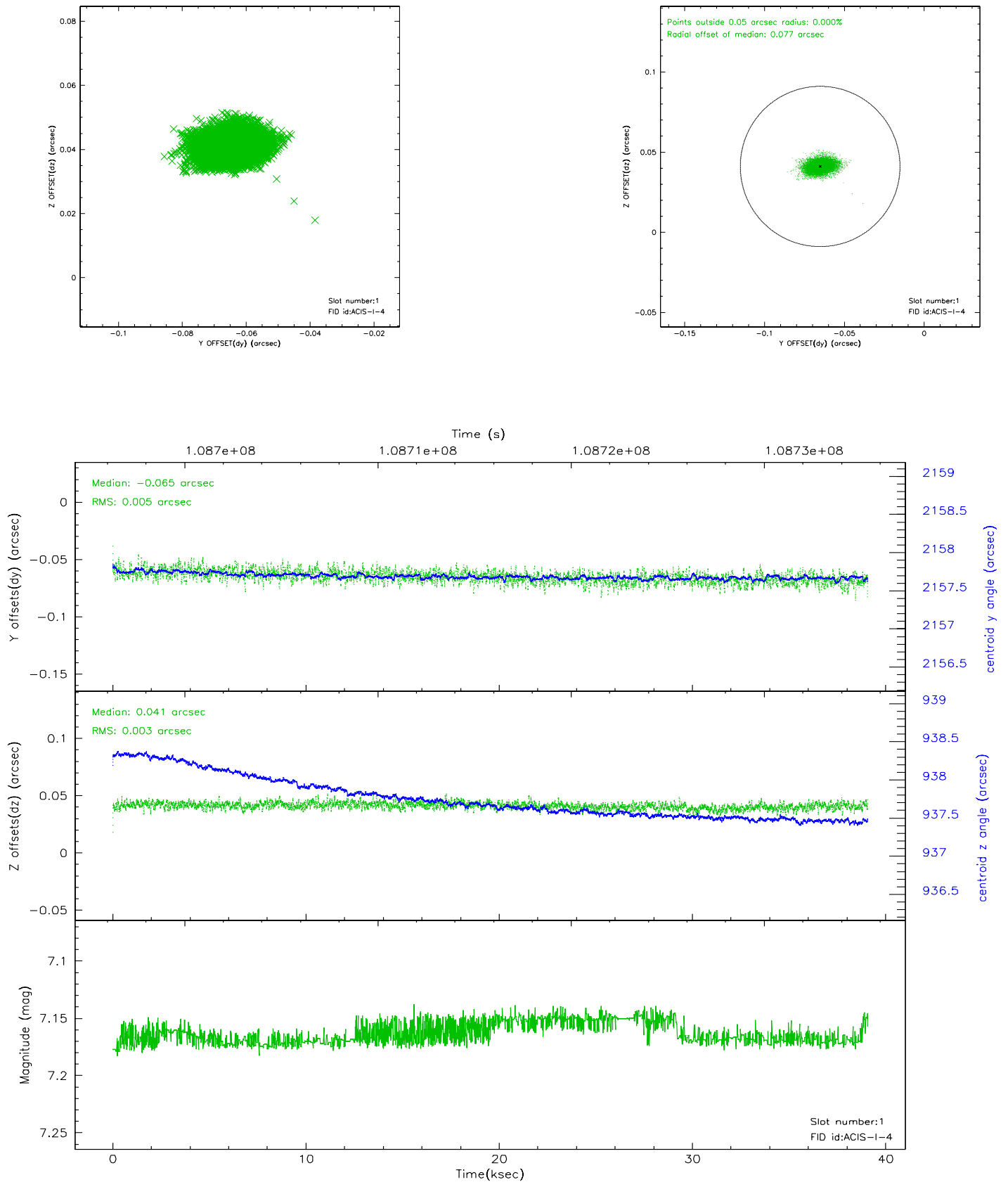


## 2.5 FID Slots

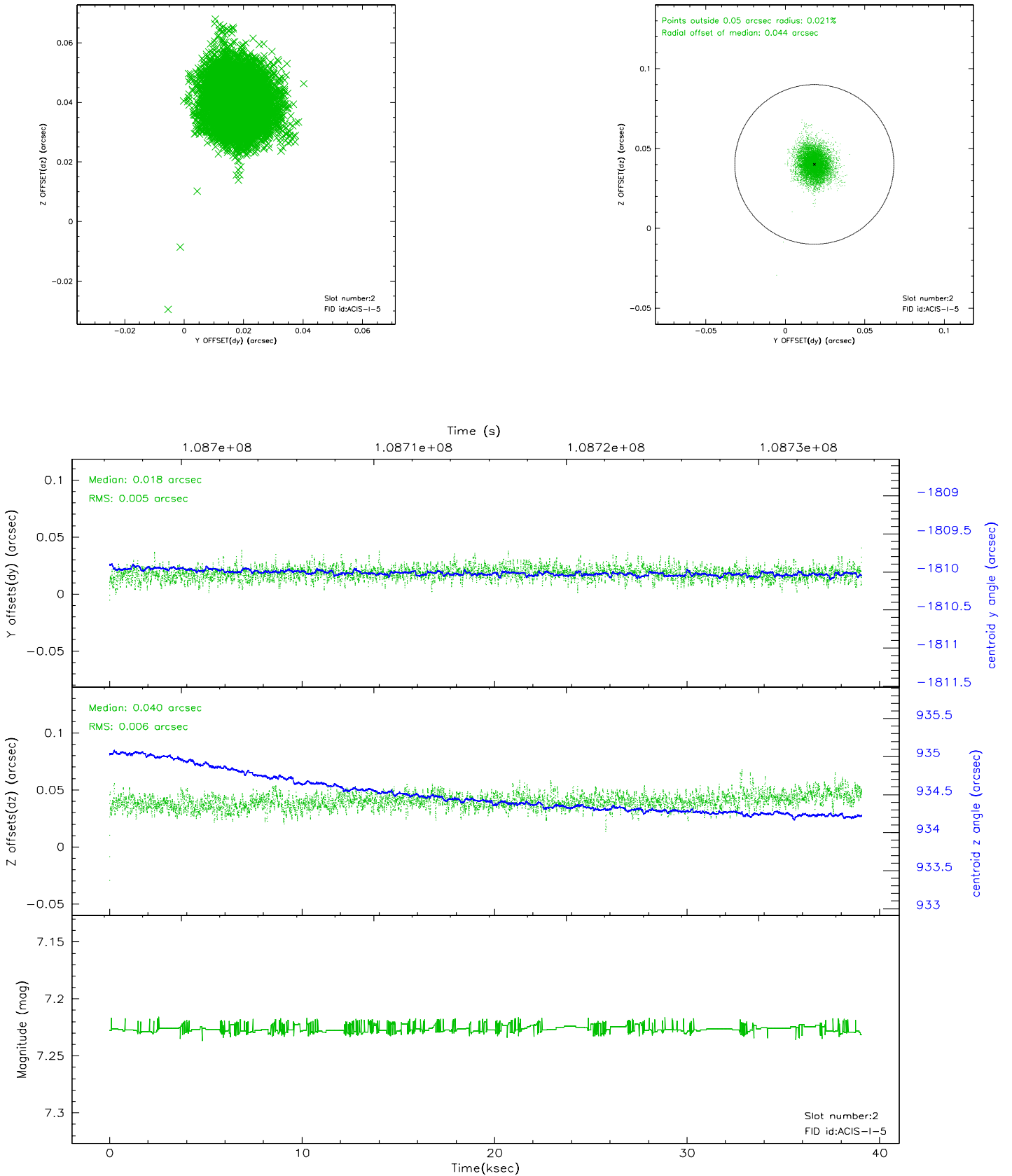
### 2.5.1 Slot 0



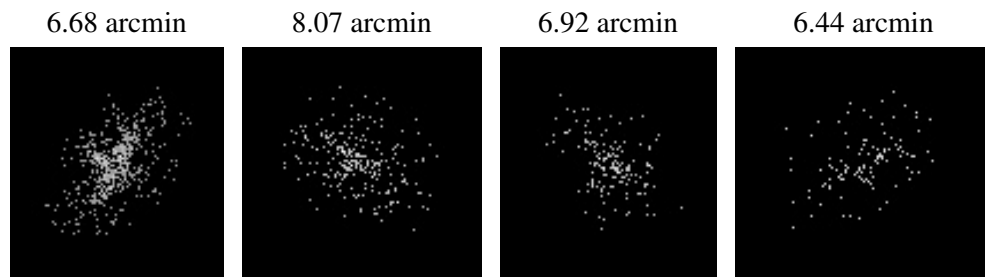
## 2.5.2 Slot 1



### 2.5.3 Slot 2



### 3 Point Sources



## A Summary

### A.1 Status

V&V Scientist	Beth Sundheim
V&V Date (YYYY-MM-DD)	2006.11.28
V&V Edition	1
V&V Disposition and Status	OK
V&V Charge Time	39

### A.2 Comments