

V&V Reference Report

L2 ASCDS Version : 7.6.9

Observation 2064 - L2 Version 001
Chandra X-Ray Center

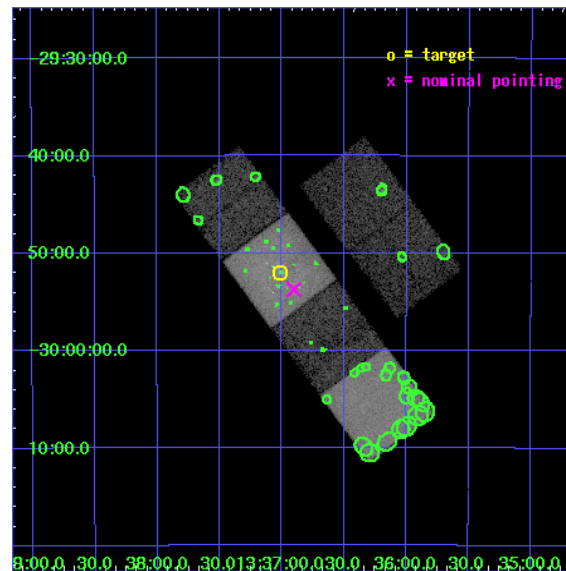
L2 Processing Date : Dec 30 2006

Contents

1	Front	2
2	OBI	3
2.1	OBI	3
2.1.1	Images	3
2.1.2	Bias	3
2.1.3	Parameters	4
2.1.4	Events	4
2.2	Compared Parameters	5
2.3	Aspect	6
2.4	Star Slots	9
2.4.1	Slot 3	9
2.4.2	Slot 4	10
2.4.3	Slot 5	11
2.4.4	Slot 6	12
2.4.5	Slot 7	13
2.5	FID Slots	14
2.5.1	Slot 0	14
2.5.2	Slot 1	15
2.5.3	Slot 2	16
3	Point Sources	17
A	Summary	18
A.1	Status	18
A.2	Comments	18

1 Front

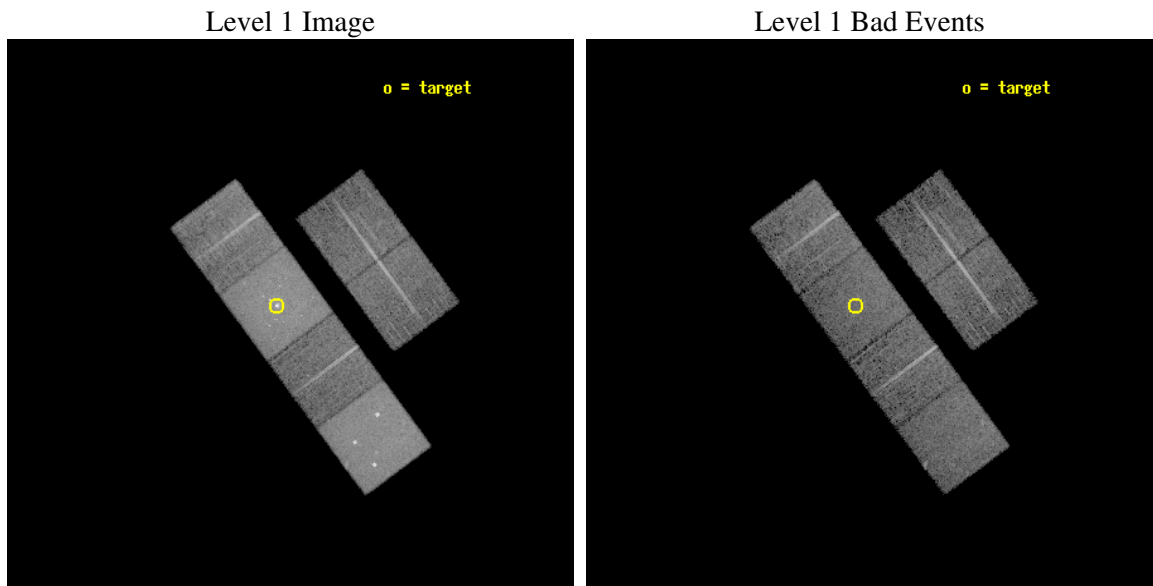
seq_num	600198
obs_id	2064
title	THE X-RAY POINT SOURCE POPULATION IN SPIRAL GALAXIES
observer	Dr. Andrea Prestwich
object	NGC 5236
dtcycle	0
cycle	P
ra_targ	204.253333
dec_targ	-29.866389
ra_nom	204.22597928094
dec_nom	-29.895344419688
roll_nom	233.42387049828
revision	2
ontime	9968.0000092834
livetime	9841.7791911569
ontime2	9968.0000092834
ontime3	9968.0000092834
ontime5	9968.0000092834
ontime6	9968.0000092834
ontime7	9968.0000092834
ontime8	9968.0000092834
l2events	180167



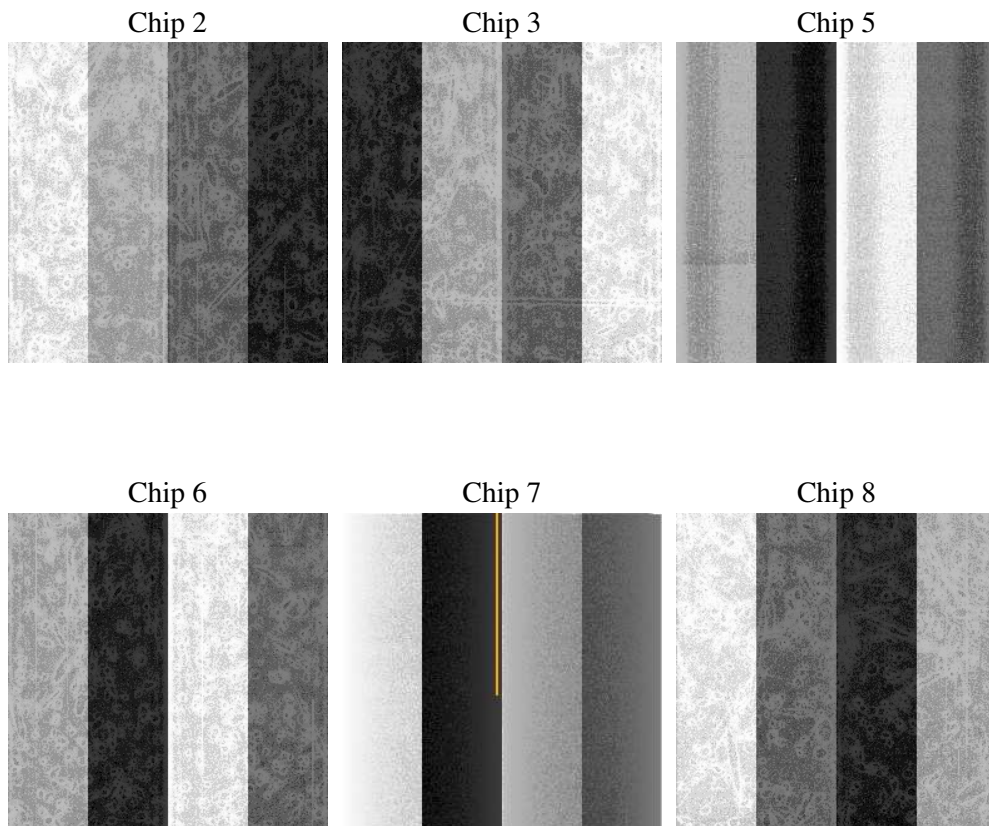
2 OBI

2.1 OBI

2.1.1 Images



2.1.2 Bias



2.1.3 Parameters

obi_num	0
ascdsver	7.6.9
caldbver	3.2.4
date	2006-12-31T01:40:13
revision	2

sched_exp_time	10019.173000
ontime	9972.5476242155
ontime2	9972.5476242155
ontime3	9972.5476242155
ontime5	9972.5476242155
ontime6	9972.5476242155
ontime7	9972.5476242155
ontime8	9972.5476242155
l1events	537910

2.1.4 Events

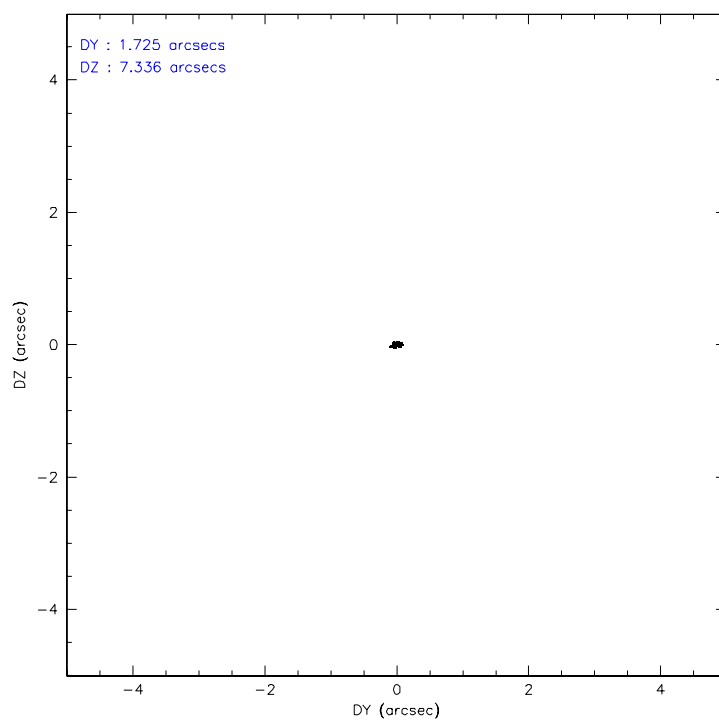
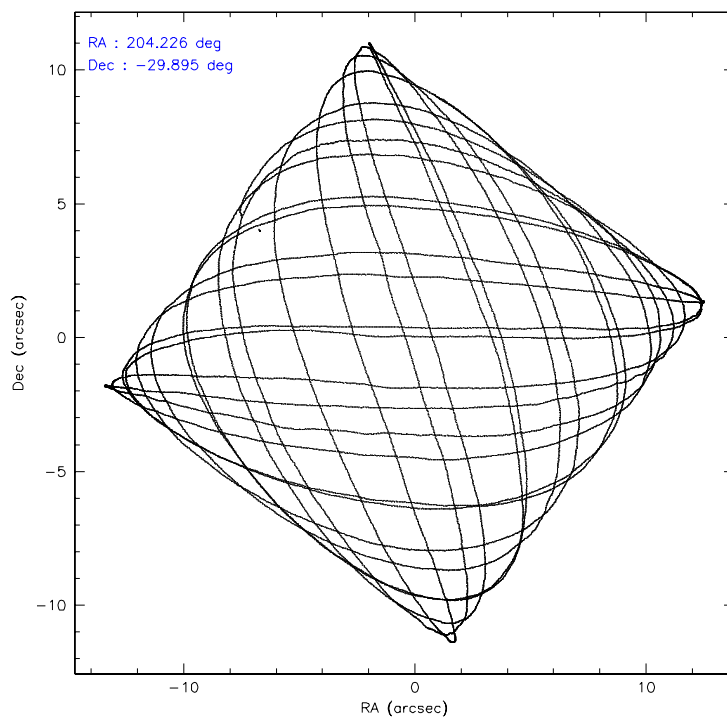
	ccd 2	ccd 3	ccd 5	ccd 6	ccd 7	ccd 8
level 1 events	66255	63632	127722	68116	128105	84080
rejected events	55993	53628	54938	55684	54139	63209
rejected %	84%	84%	43%	81%	42%	75%

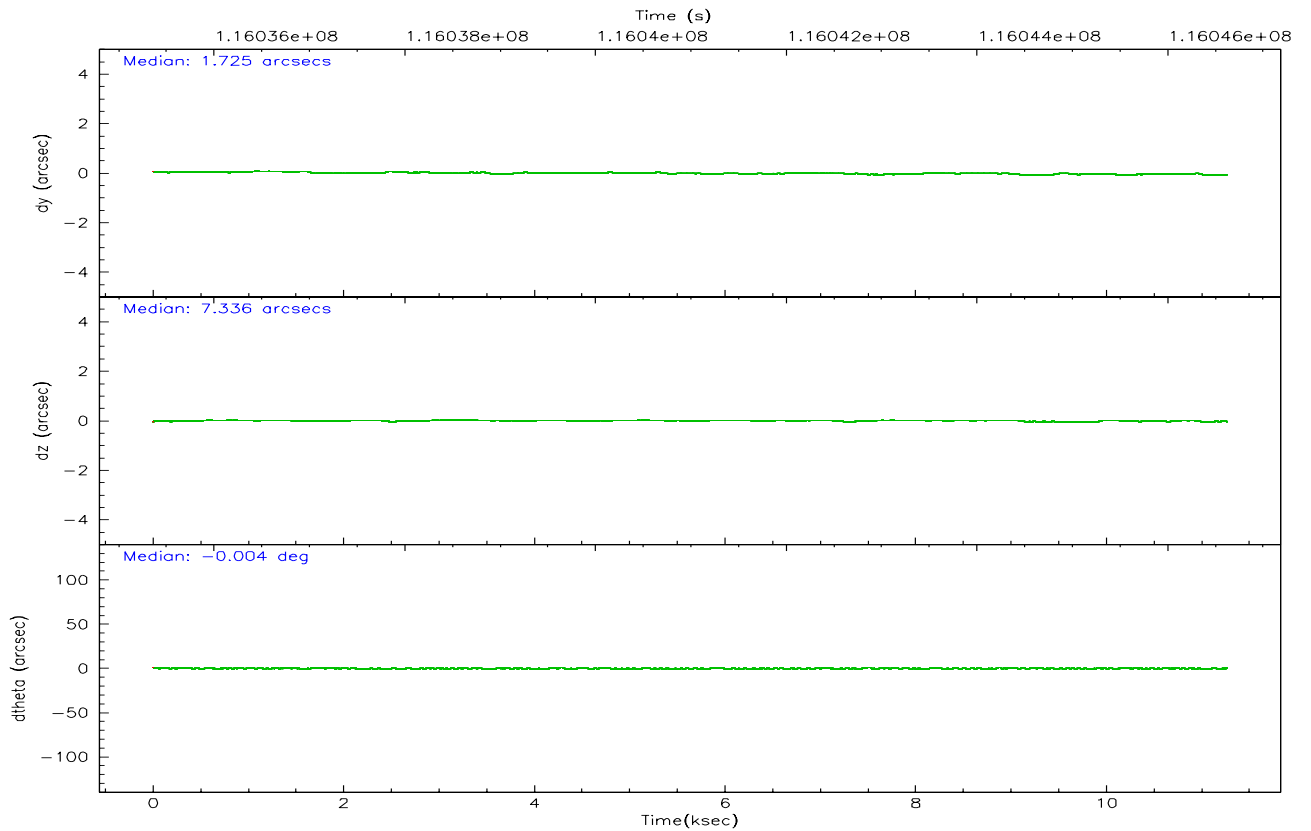
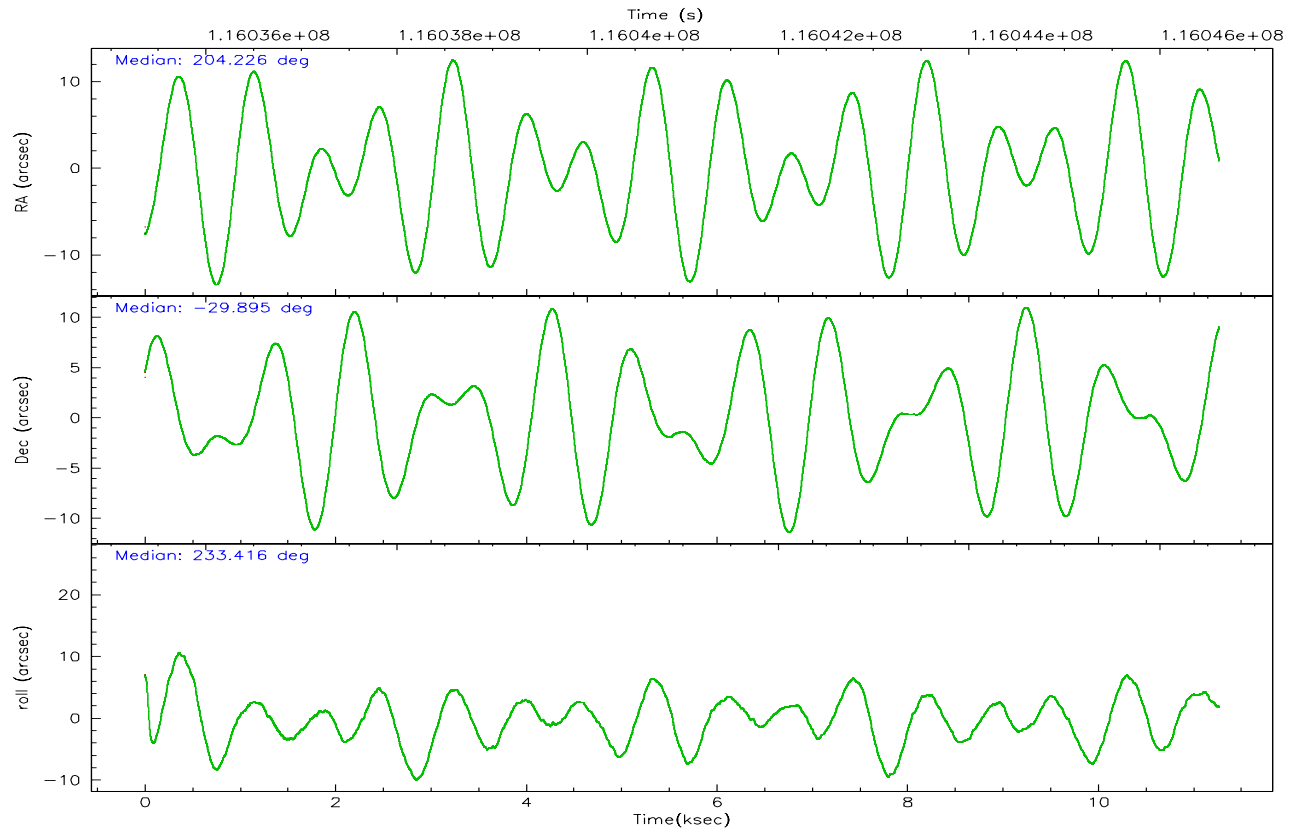
	ccd 2	ccd 3	ccd 5	ccd 6	ccd 7	ccd 8
grade 0 events	5536	5451	10071	7294	9187	9017
	8%	8%	7%	10%	7%	10%
grade 1 events	41	54	172	44	56	46
	0%	0%	0%	0%	0%	0%
grade 2 events	1867	1707	22055	2055	16740	4085
	2%	2%	17%	3%	13%	4%
grade 3 events	715	735	2274	783	4707	1772
	1%	1%	1%	1%	3%	2%
grade 4 events	772	779	2124	787	4729	1654
	1%	1%	1%	1%	3%	1%
grade 5 events	2336	2417	4796	2639	6000	3357
	3%	3%	3%	3%	4%	3%
grade 6 events	1378	1338	36304	1521	38647	4356
	2%	2%	28%	2%	30%	5%
grade 7 events	53610	51151	49926	52993	48039	59793
	80%	80%	39%	77%	37%	71%

2.2 Compared Parameters

Parameter	Planned	Actual	Parameter	Planned	Actual
Instrument	ACIS	ACIS	Obspar format version number	6	6
Detector	ACIS-235678	ACIS-235678	Obspar file type	PREDICTED	ACTUAL
Grating	NONE	NONE	Obspar update status	NONE	UPDATED
Data mode	FAINT	FAINT	Number of optional ACIS chips dropped	0	0
Observation mode	POINTING	POINTING	On-chip summing requested	N	N
Pointing RA	204.229195	204.2259792809427	Subarray requested	NONE	NONE
Pointing Dec	-29.868246	-29.89534441968841	Alternating exposures requested	N	N
Pointing Roll	233.268839	233.4238704982793	Primary exposure time	0.000000	3.2
SIM focus pos (mm)	-0.684267	-0.6828225247311905			
SIM defocus (mm)	0	0.001444936568705701			
SIM translation stage pos (mm)	-190.132523	-190.1425803651734			
SIM translation stage offset (mm)	0	0.01005778216563158			
Observation start time	116036607.184000	116035118.8558			
Observation start date	2001-09-05T00:22:23	2001-09-04T23:58:38			
Observation end time	116046627.184000	116046941.20627			
Observation end date	2001-09-05T03:09:23	2001-09-05T03:15:41			
Read mode	TIMED	TIMED			

2.3 Aspect



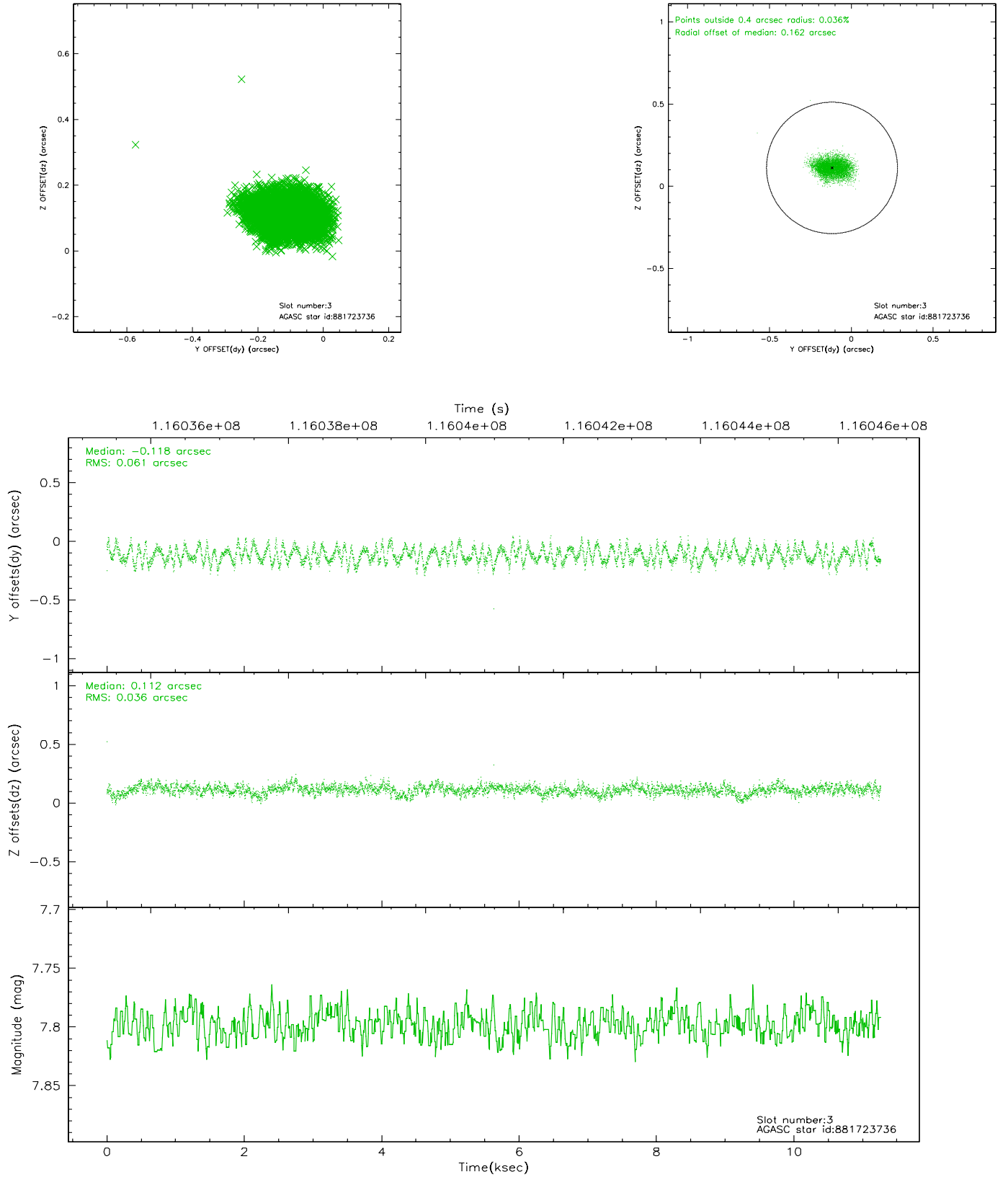


Slot Statistics

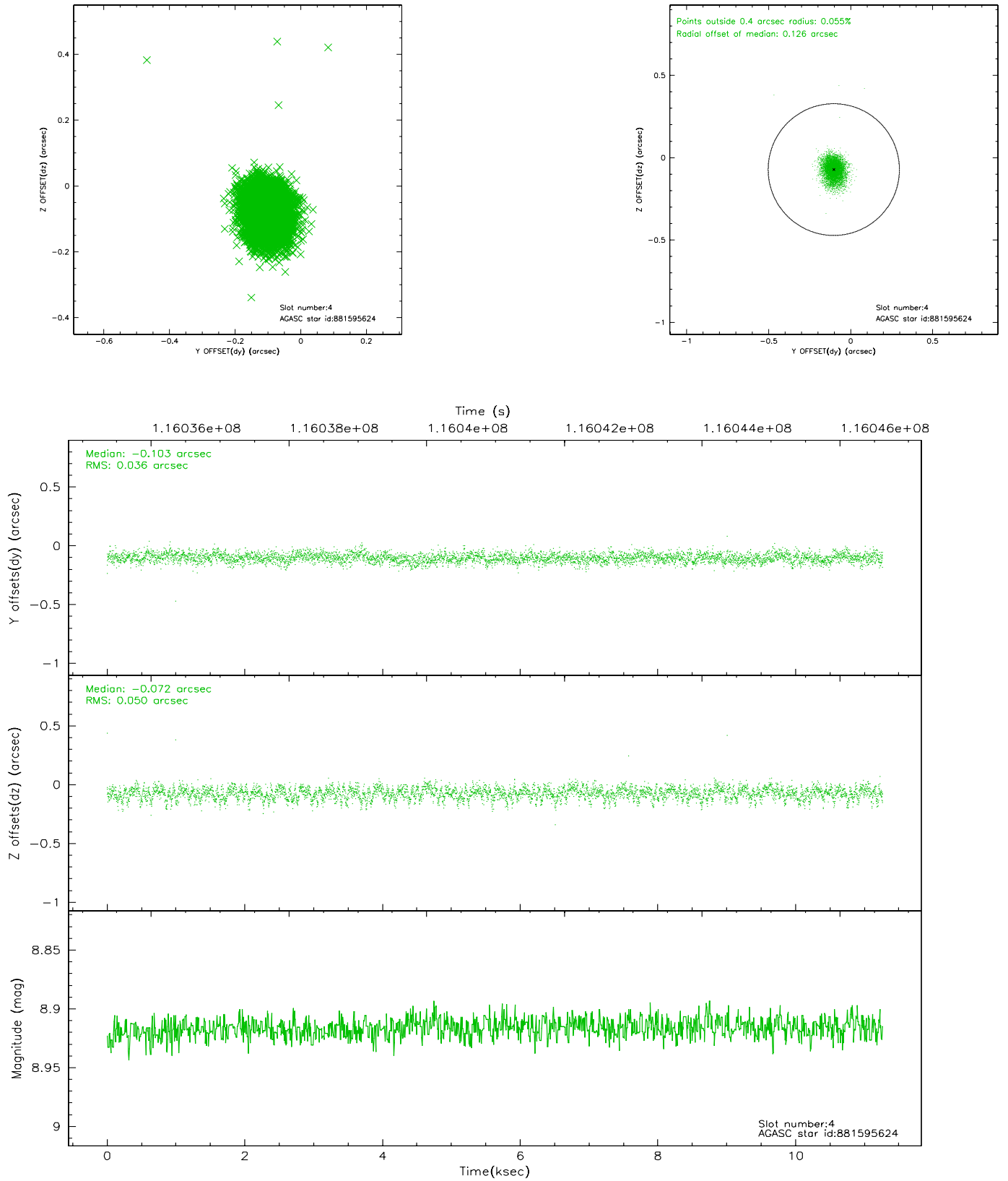
slot	status	id	mag	n_pts	med_dy	med_dz	dr1	dr2	ra	dec	mean_y	mean_z
0	FID	ACIS-S-2	7.11	2749	-0.004	0.023	0.006	0.010	0.000000	0.000000	-754.33	-1728.43
1	FID	ACIS-S-4	7.20	2749	-0.106	-0.004	0.005	0.008	0.000000	0.000000	2158.64	179.55
2	FID	ACIS-S-5	7.24	2749	0.078	-0.010	0.006	0.010	0.000000	0.000000	-1806.51	173.74
3	GUIDE	881723736	7.80	5497	-0.118	0.112	0.076	0.122	205.257294	-29.730831	-2305.96	2288.27
4	GUIDE	881595624	8.92	5497	-0.103	-0.072	0.064	0.106	204.202876	-29.365867	-1398.78	-1147.80
5	GUIDE	952240712	8.75	5496	0.051	-0.030	0.068	0.107	204.398863	-30.084893	310.72	889.93
6	GUIDE	881595568	9.16	5495	-0.011	-0.056	0.099	0.153	203.519167	-29.642189	683.99	-2263.03
7	GUIDE	952239096	9.67	5478	0.184	0.050	0.105	0.167	203.798157	-30.282715	2001.30	-180.23

2.4 Star Slots

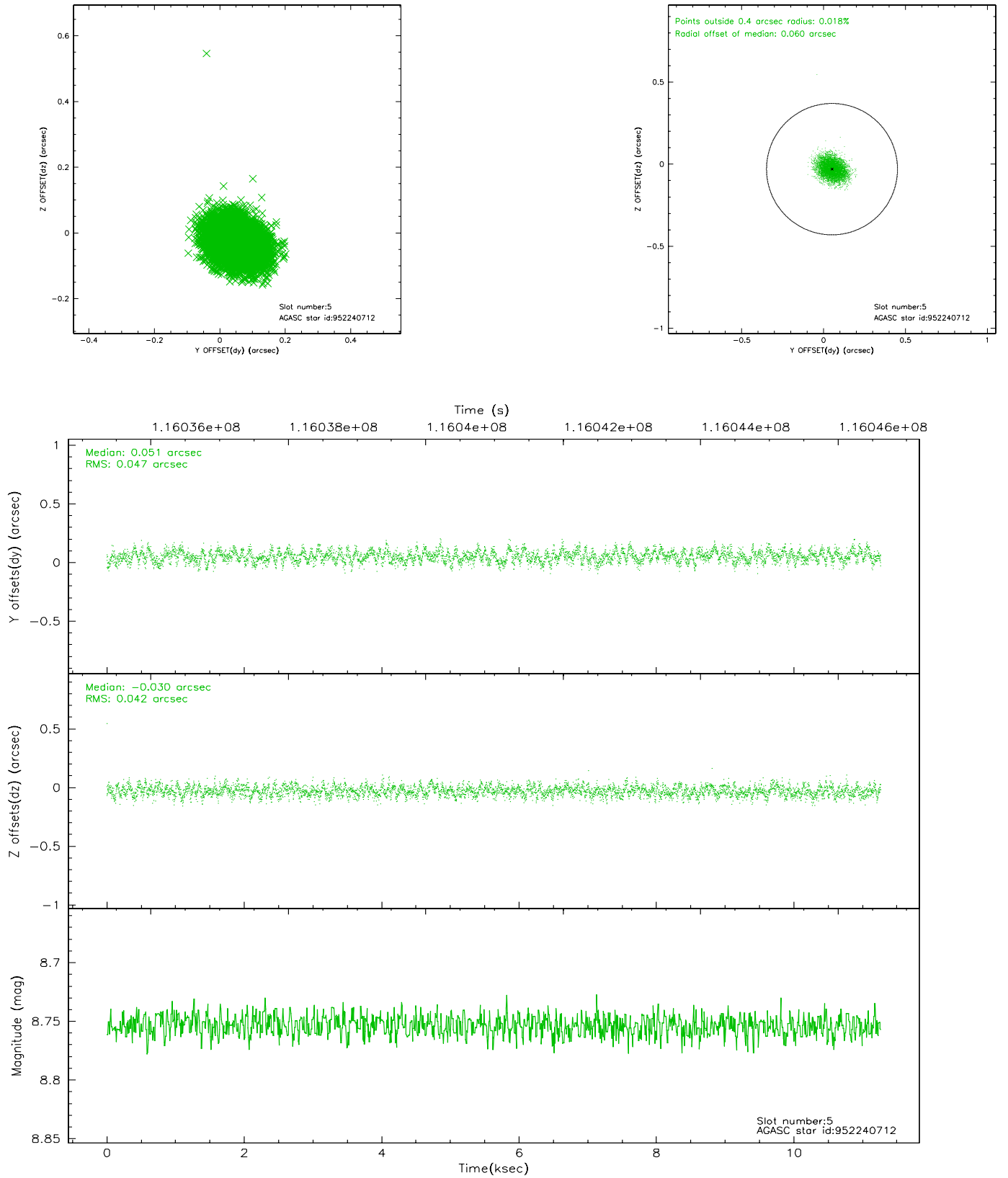
2.4.1 Slot 3



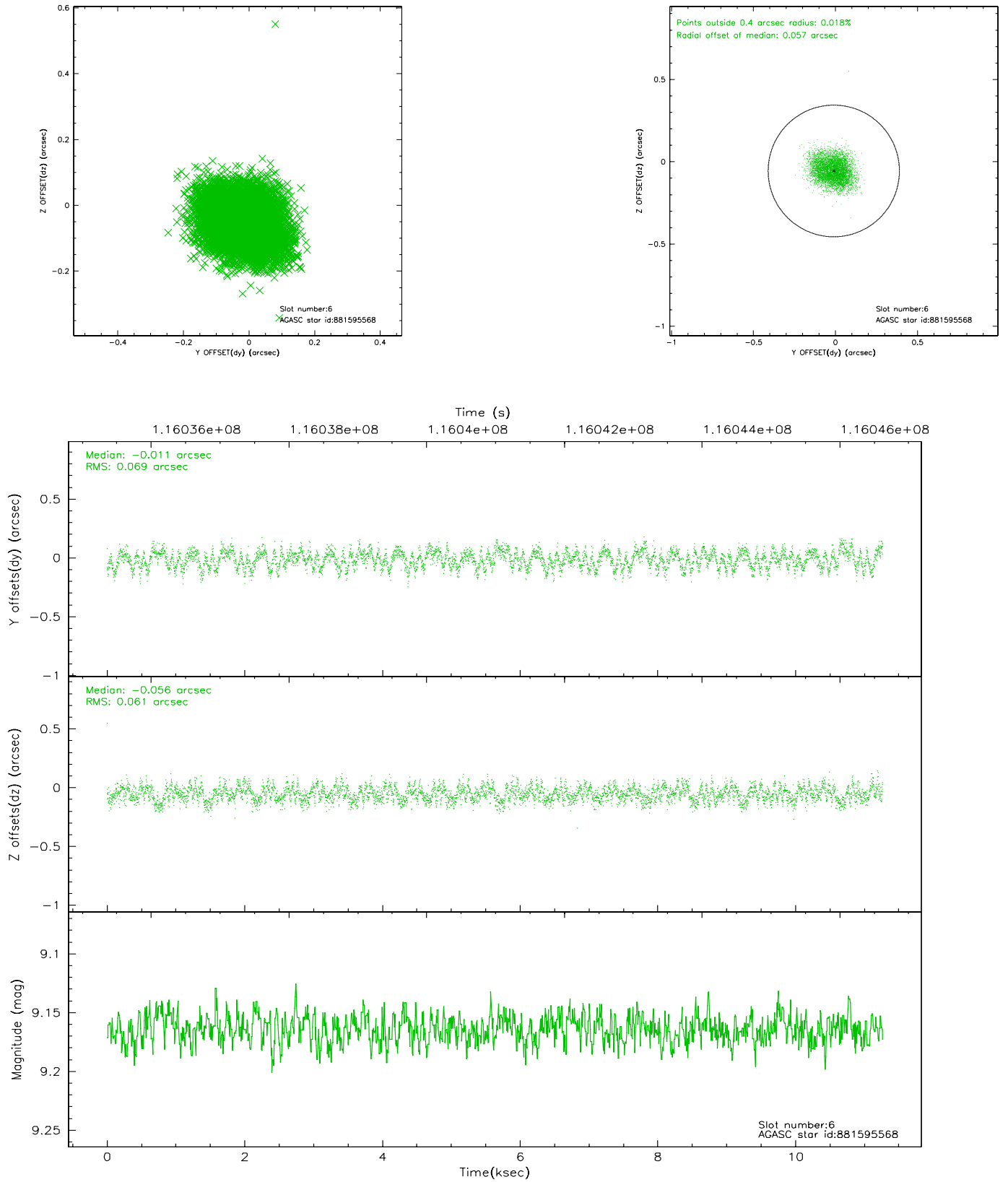
2.4.2 Slot 4



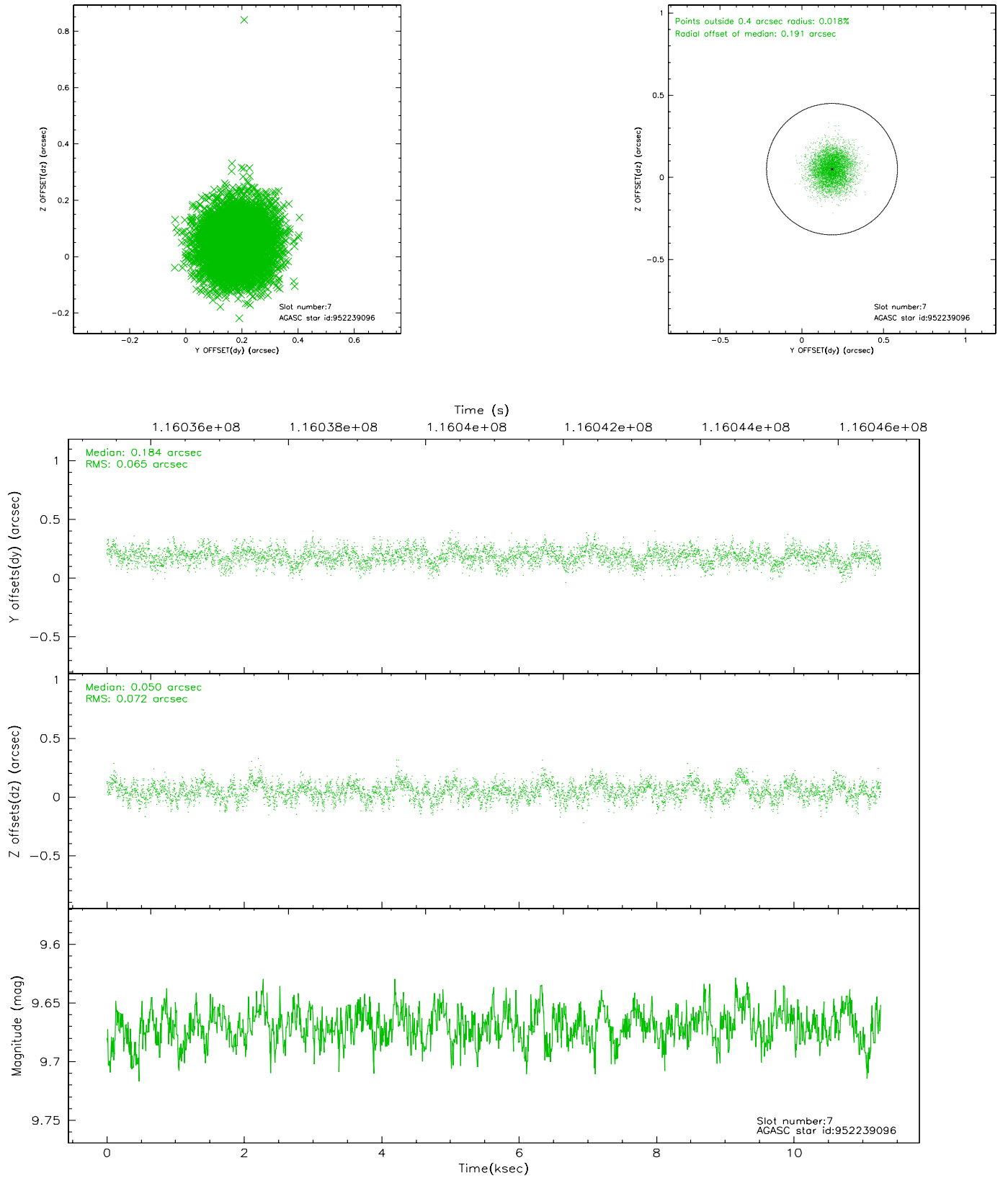
2.4.3 Slot 5



2.4.4 Slot 6

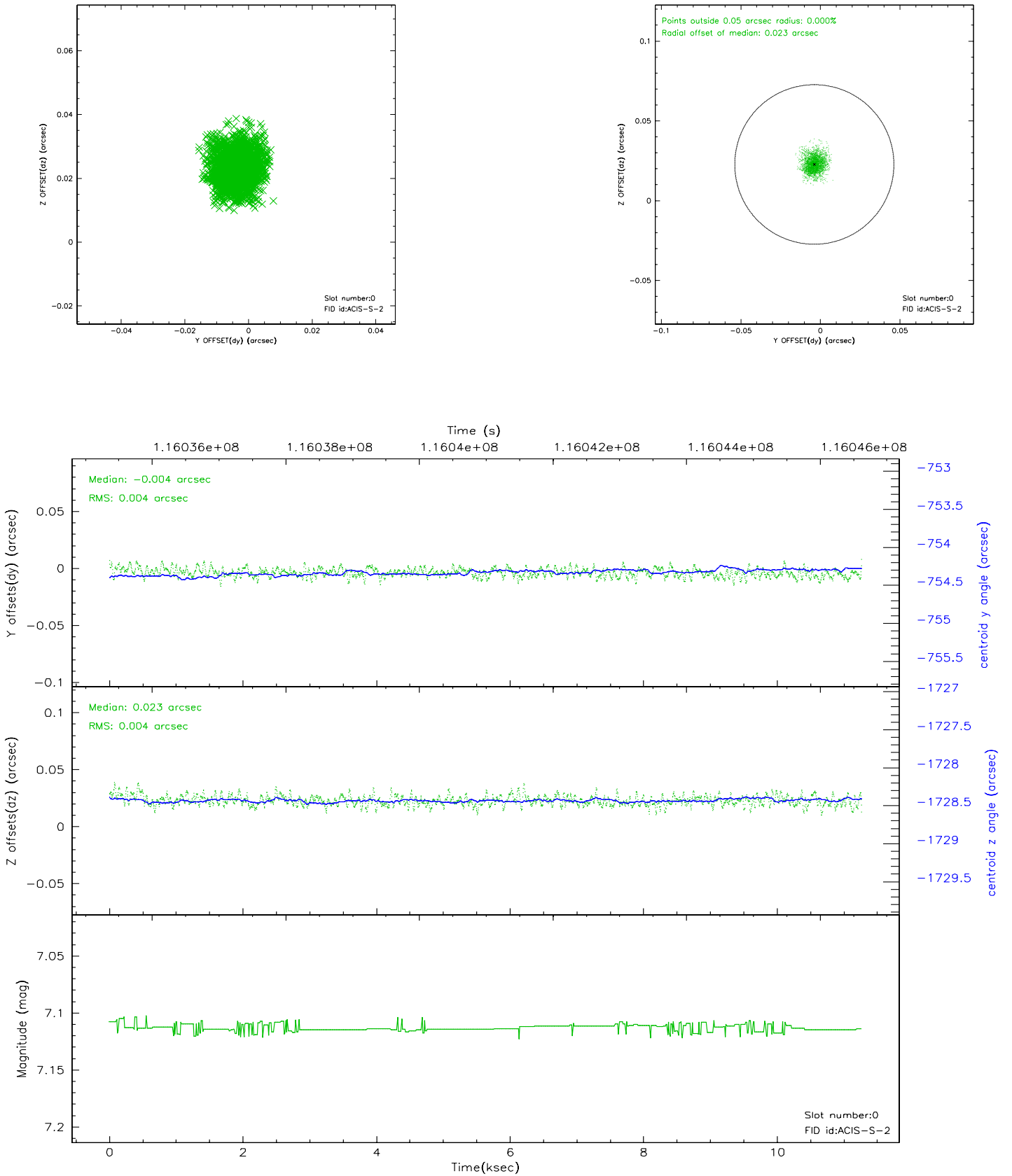


2.4.5 Slot 7

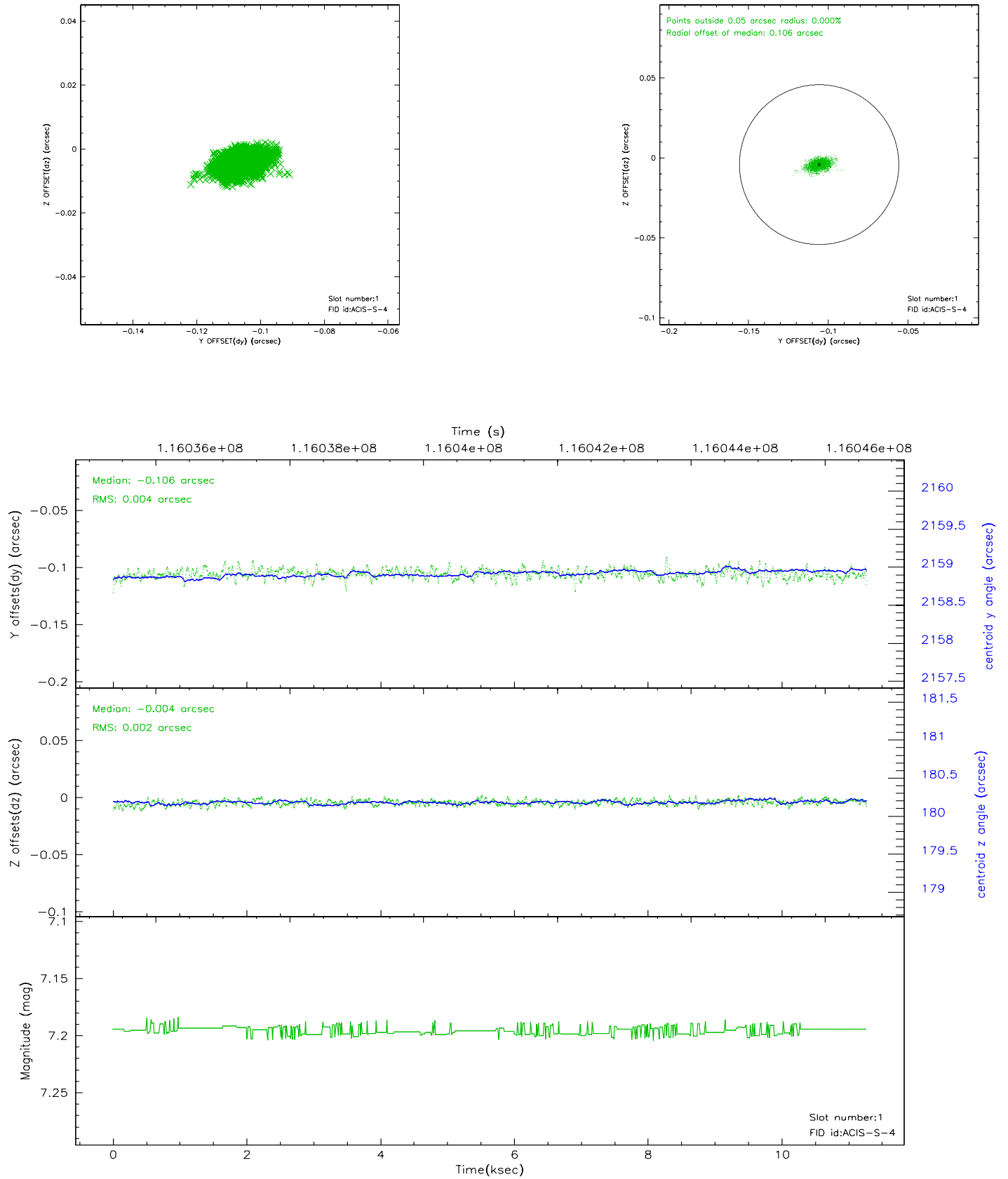


2.5 FID Slots

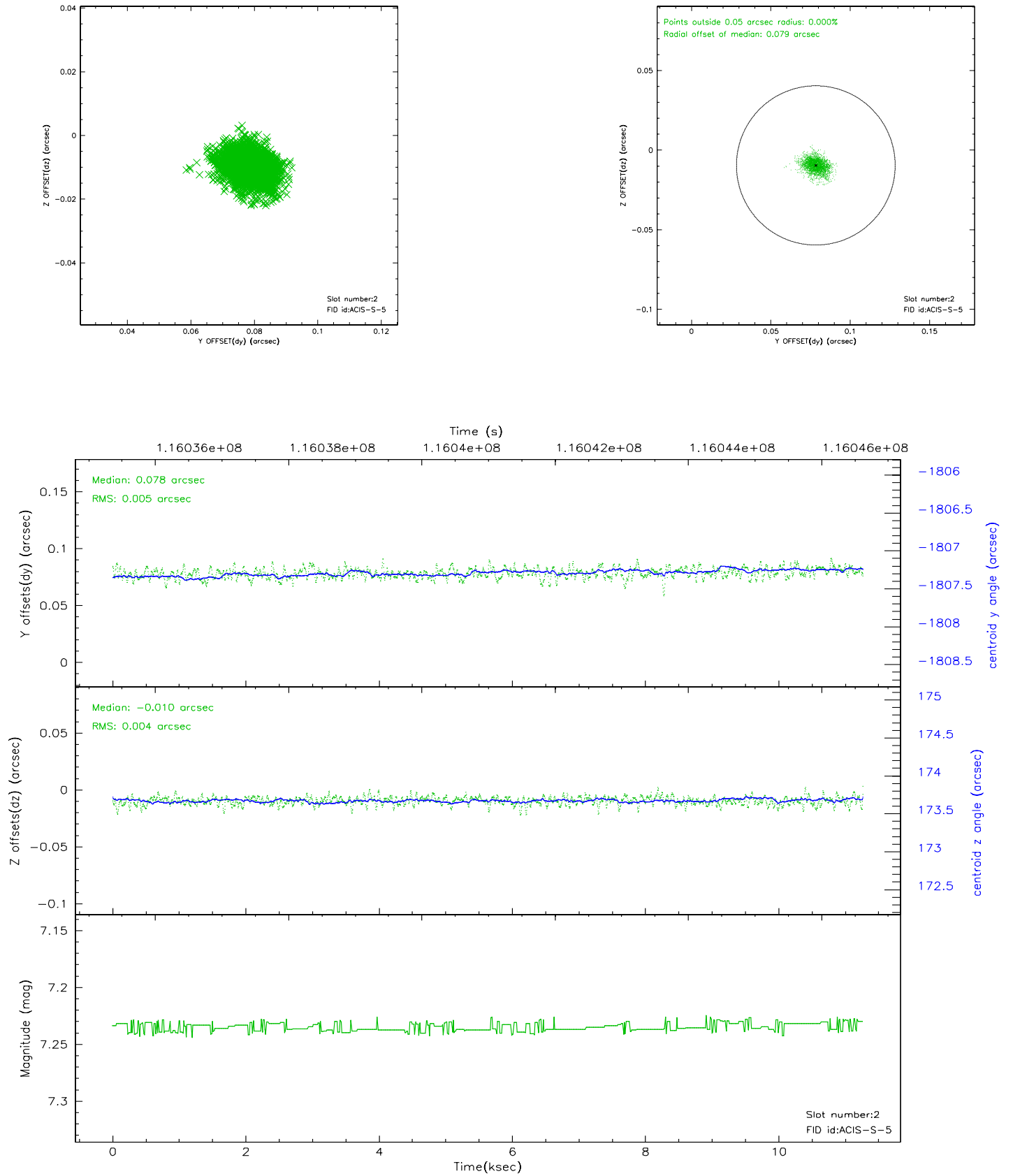
2.5.1 Slot 0



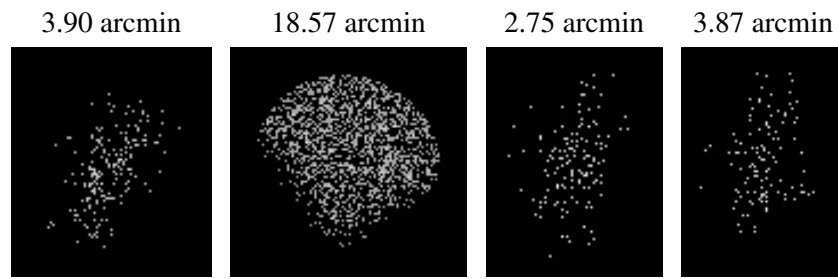
2.5.2 Slot 1



2.5.3 Slot 2



3 Point Sources



A Summary

A.1 Status

V&V Scientist	Beth Sundheim
V&V Date (YYYY-MM-DD)	2007.01.03
V&V Edition	1
V&V Disposition and Status	OK
V&V Charge Time	9.97

A.2 Comments