

V&V Reference Report

L2 ASCDS Version : 8.4.5

Observation 2051 - L2 Version 3
Chandra X-Ray Center

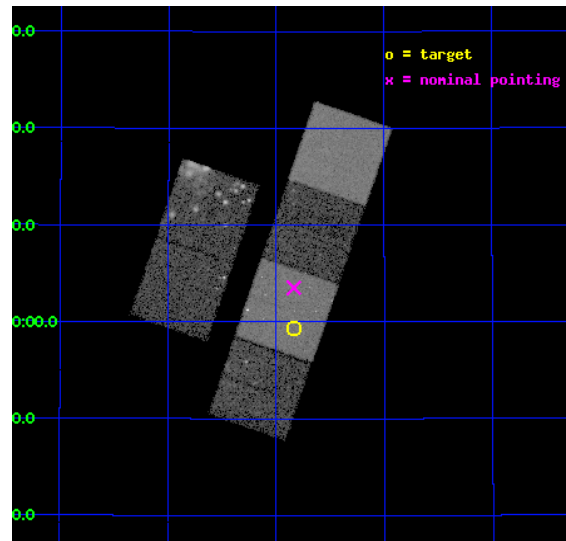
L2 Processing Date : Sep 20 2012

Contents

1	Front	2
2	OBI	3
2.1	OBI	3
2.1.1	Images	3
2.1.2	Bias	3
2.1.3	Parameters	4
2.1.4	Events	4
2.2	Compared Parameters	5
2.3	Aspect	6
2.4	Star Slots	9
2.4.1	Slot 3	9
2.4.2	Slot 4	10
2.4.3	Slot 5	11
2.4.4	Slot 6	12
2.4.5	Slot 7	13
2.5	FID Slots	14
2.5.1	Slot 0	14
2.5.2	Slot 1	15
2.5.3	Slot 2	16
A	Summary	17
A.1	Status	17
A.2	Comments	17

1 Front

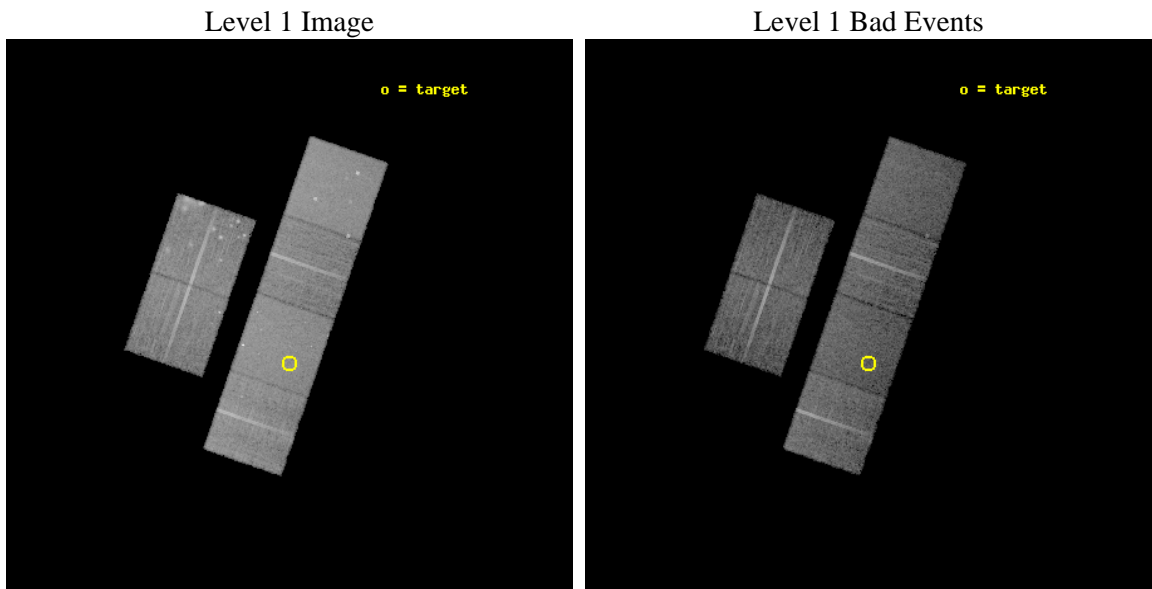
seq_num	600185	Sequence number
obs_id	2051	Observation id
title	2001: A SPACE CENSUS -- SUPERSOFT X-RAY SOURCES AND OTHER X-RAY SOURCES IN M31	Proposal title
observer	Dr. R. Di Stefano	Principal investigator
object	M31_2	Source name
dtcycle	0	
cycle	P	events from which exps? Prim/Second/Both
ra_targ	10.457917	Observer's specified target RA [deg]
dec_targ	40.988889	Observer's specified target Dec [deg]
ra_nom	10.459018517219	Nominal RA [deg]
dec_nom	41.058681216764	Nominal Dec [deg]
roll_nom	109.04610334257	Nominal Roll [deg]
revision	3	Processing version of data
ontime	13753.600012794	Sum of GTIs [s]
livetime	13579.443648008	Livetime [s]
ontime2	13753.600012794	Sum of GTIs [s]
ontime3	13750.359062552	Sum of GTIs [s]
ontime5	13753.600012794	Sum of GTIs [s]
ontime6	13753.600012794	Sum of GTIs [s]
ontime7	13753.600012794	Sum of GTIs [s]
ontime8	13747.118072361	Sum of GTIs [s]
l2events	154475	Number of level 2 events



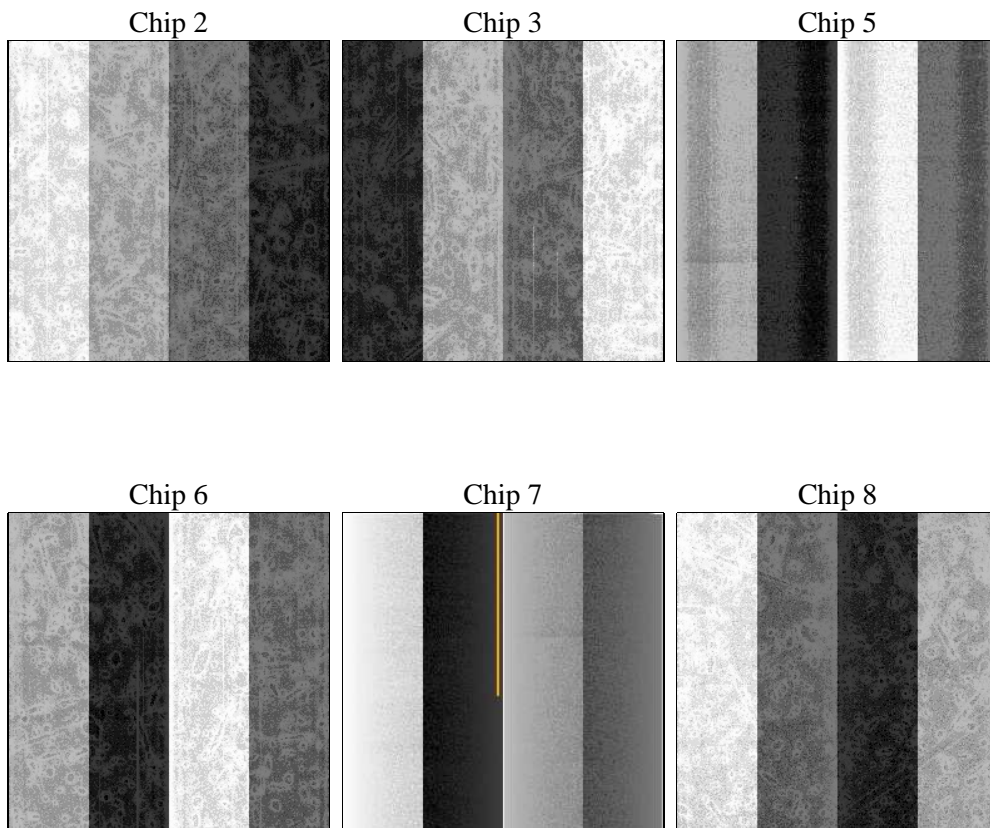
2 OBI

2.1 OBI

2.1.1 Images



2.1.2 Bias



2.1.3 Parameters

obi_num	0	Obi number	sched_exp_time	14000.000000	[s] Scheduled observation exposure time
ascdsver	8.4.5	Processing system revision	ontime	13753.600012794	Sum of GTIs [s]
caldsver	4.5.1.1	 	ontime2	13753.600012794	Sum of GTIs [s]
date	2012-09-20T13:16:06	Date and time of file creation	ontime3	13750.359062552	Sum of GTIs [s]
revision	3	Processing version of data	ontime5	13753.600012794	Sum of GTIs [s]
			ontime6	13753.600012794	Sum of GTIs [s]
			ontime7	13753.600012794	Sum of GTIs [s]
			ontime8	13747.118072361	Sum of GTIs [s]
			l1events	644779	Number of level 1 events

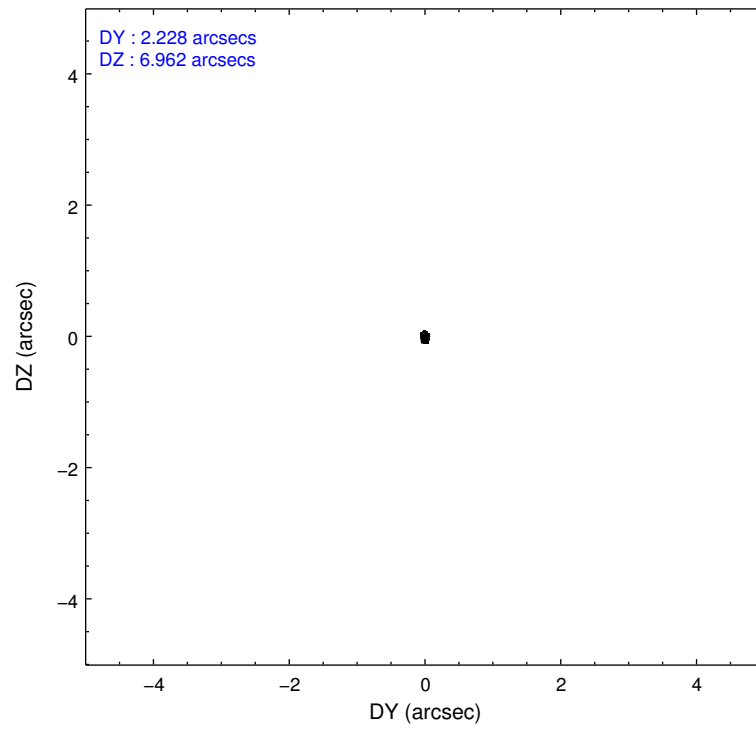
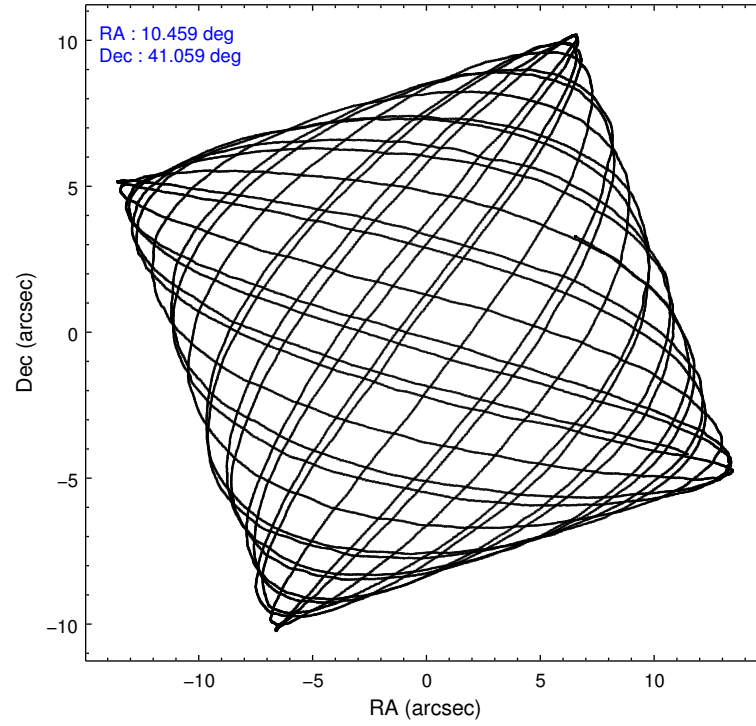
2.1.4 Events

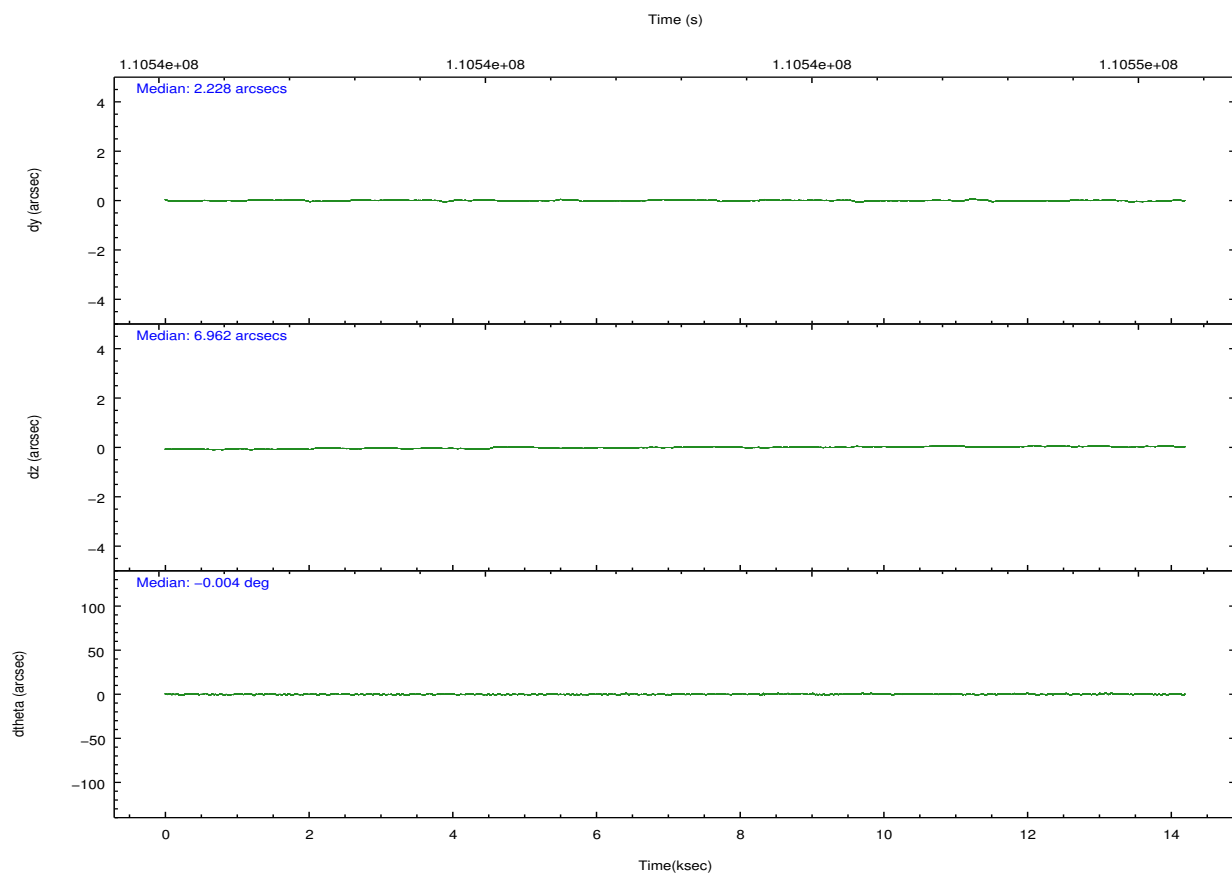
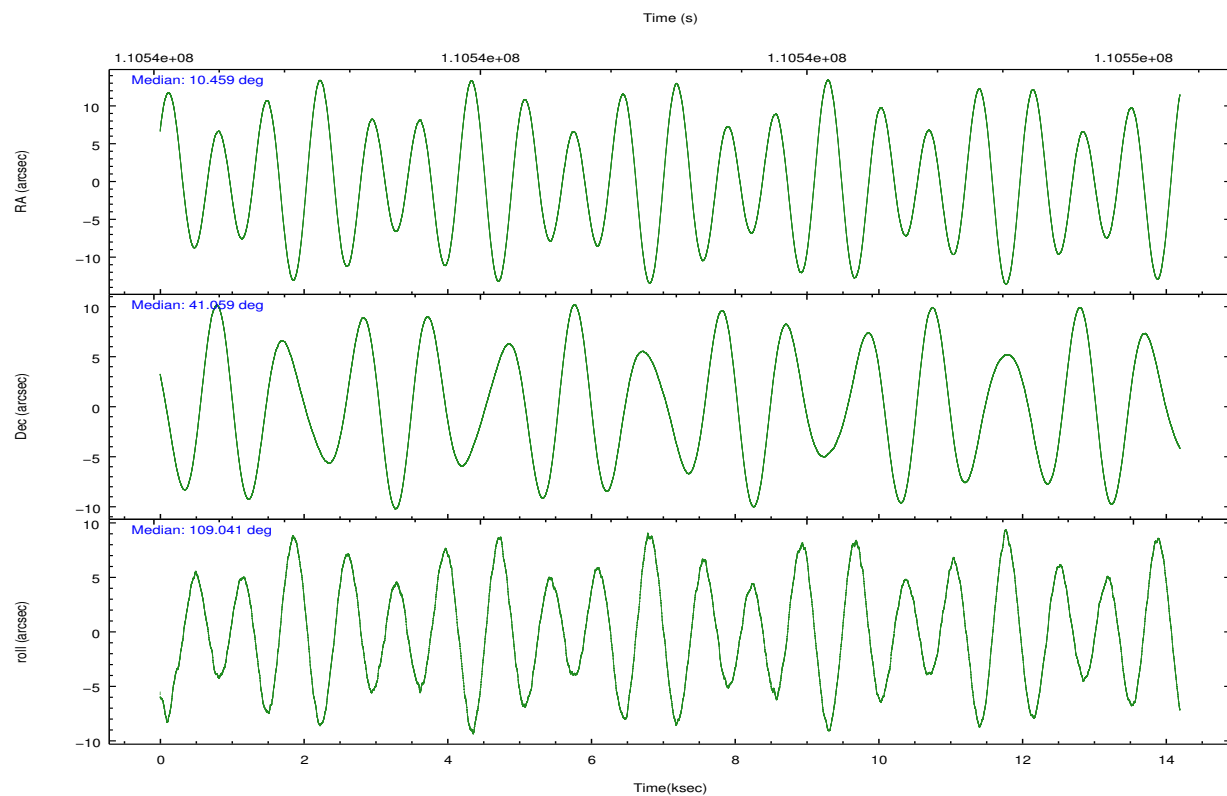
	ccd 2	ccd 3	ccd 5	ccd 6	ccd 7	ccd 8		ccd 2	ccd 3	ccd 5	ccd 6	ccd 7	ccd 8
level 1 events	105713	88850	125938	90779	117116	116383	grade 0 events	15701	5037	6784	4459	5494	7337
rejected events	81732	78016	67799	80077	66179	92914		14%	5%	5%	4%	4%	6%
rejected %	77%	87%	53%	88%	56%	79%	grade 1 events	88	42	283	33	100	85
								0%	0%	0%	0%	0%	0%
							grade 2 events	3562	2074	16482	2109	10254	5091
								3%	2%	13%	2%	8%	4%
							grade 3 events	1322	938	2692	1062	4761	2465
								1%	1%	2%	1%	4%	2%
							grade 4 events	1311	957	2562	1060	4608	2332
								1%	1%	2%	1%	3%	2%
							grade 5 events	3204	3370	9832	3734	10887	4733
								3%	3%	7%	4%	9%	4%
							grade 6 events	2091	1831	29629	2016	25836	6249
								1%	2%	23%	2%	22%	5%
							grade 7 events	78434	74601	57674	76306	55176	88091
								74%	83%	45%	84%	47%	75%

2.2 Compared Parameters

Parameter	Planned	Actual	Parameter	Planned	Actual
Instrument	ACIS	ACIS	Obspar format version number	7	7
Detector	ACIS-235678	ACIS-235678	Obspar file type	PREDICTED	ACTUAL
Grating	NONE	NONE	Obspar update status	NONE	UPDATED
Data mode	FAINT	FAINT	Number of optional ACIS chips dropped	0	0
Observation mode	POINTING	POINTING	On-chip summing requested	N	N
[deg] Pointing RA	10.486571	10.45901851721888	Subarray requested	NONE	NONE
[deg] Pointing Dec	41.041030	41.05868121676426	Alternating exposures requested	N	N
[deg] Pointing Roll	108.871383	109.0461033425728	[s] Primary exposure time	0.000000	3.2
[mm] SIM focus pos	-0.684267	-0.6828225247311905			
[mm] SIM defocus	0	0.001444936568705701			
[mm] SIM translation stage pos	-190.132523	-190.145094680475			
[mm] SIM translation stage offset	0	0.01257209746719923			
[s] Observation start time (MET)	110535998.184000	110535620.02709			
Observation start date	2001-07-03T08:25:34	2001-07-03T08:20:20			
[s] Observation end time (MET)	110549998.184000	110550138.64016			
Observation end date	2001-07-03T12:18:54	2001-07-03T12:22:18			
Read mode	TIMED	TIMED			

2.3 Aspect



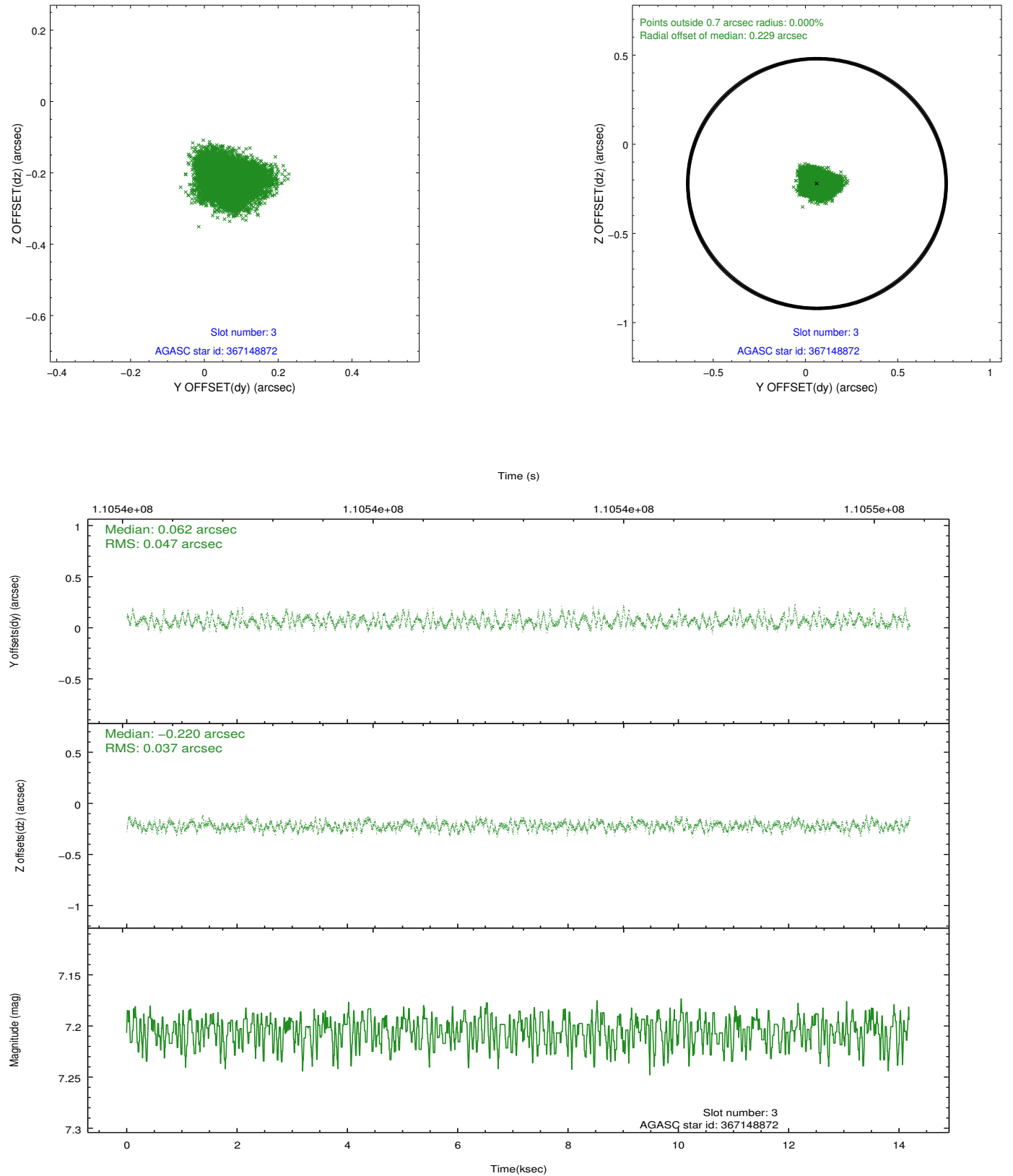


Slot Statistics

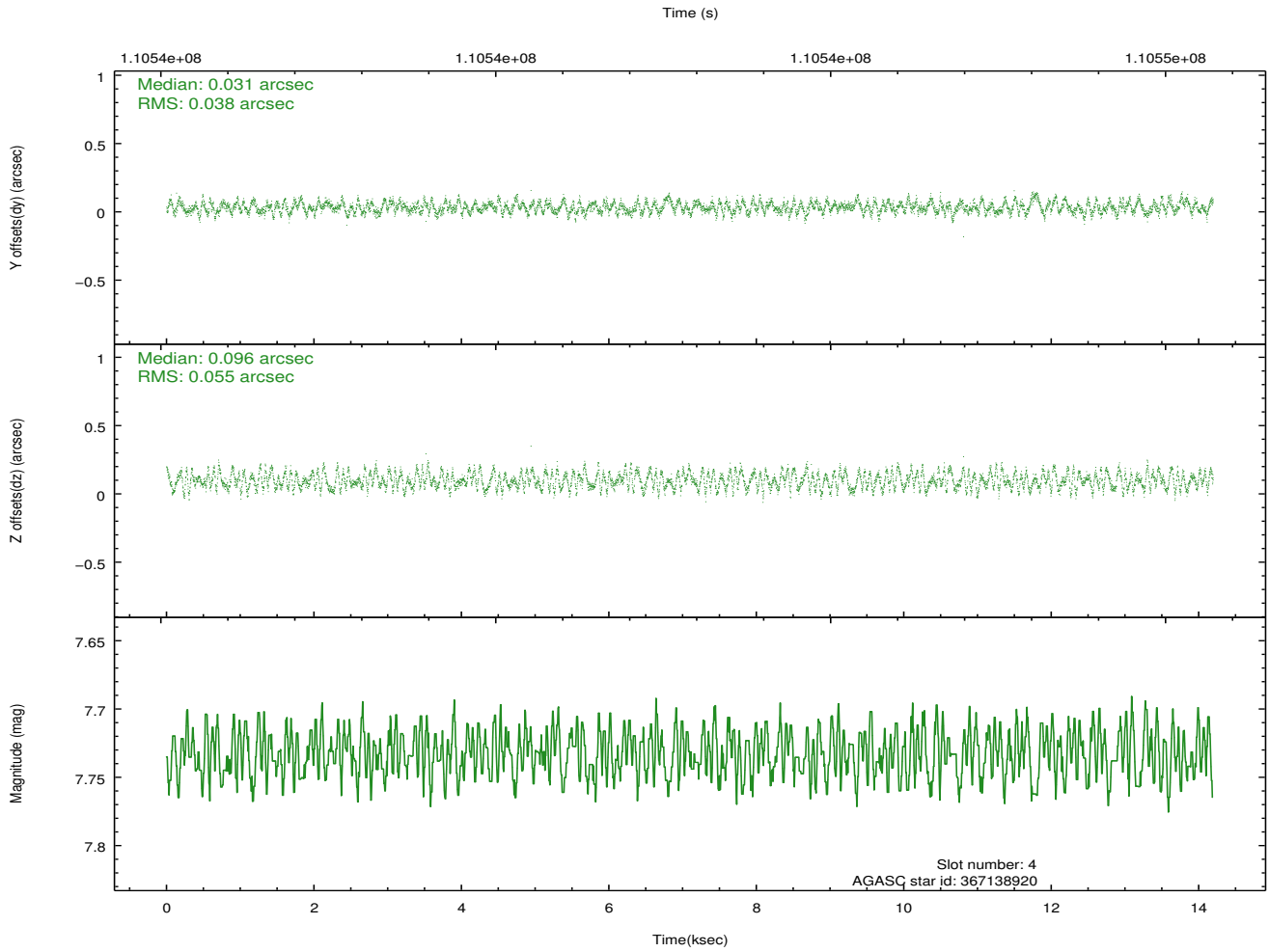
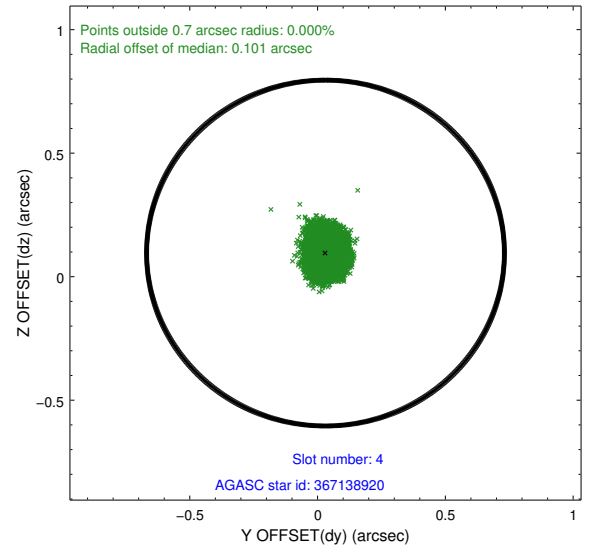
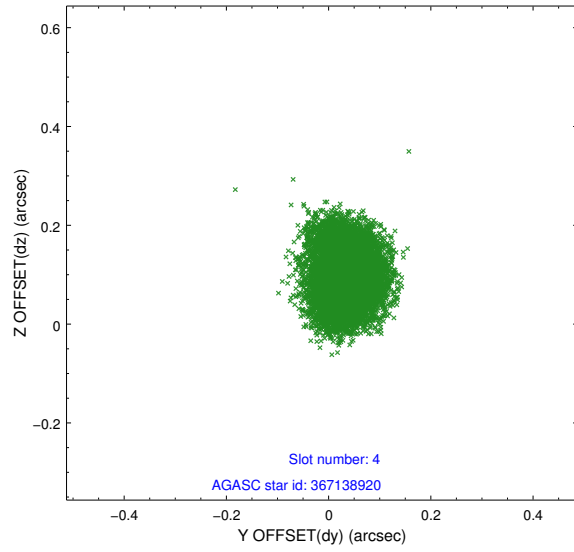
slot	status	id	mag	n_pts	med_dy	med_dz	dr1	dr2	ra	dec	mean_y	mean_z
0	FID	ACIS-S-2	7.12	3462	-0.003	-0.009	0.005	0.010	0.000000	0.000000	-754.84	-1728.03
1	FID	ACIS-S-4	7.20	3461	-0.027	-0.003	0.006	0.010	0.000000	0.000000	2158.25	180.14
2	FID	ACIS-S-6	7.35	3461	0.002	0.019	0.007	0.012	0.000000	0.000000	407.55	817.92
3	GUIDE	367148872	7.20	6924	0.062	-0.220	0.065	0.100	10.505940	40.688258	-1219.46	360.24
4	GUIDE	367138920	7.73	6925	0.031	0.096	0.074	0.110	11.513485	40.808909	-1680.92	-2383.10
5	GUIDE	367139768	7.98	6922	0.157	0.066	0.057	0.090	11.069715	40.685175	-1722.72	-1094.38
6	GUIDE	365965512	8.30	6923	-0.085	-0.184	0.053	0.087	9.391602	41.418521	2258.51	2351.24
7	GUIDE	367674552	8.85	6922	-0.170	0.243	0.068	0.111	11.016238	41.570845	1347.27	-1967.76

2.4 Star Slots

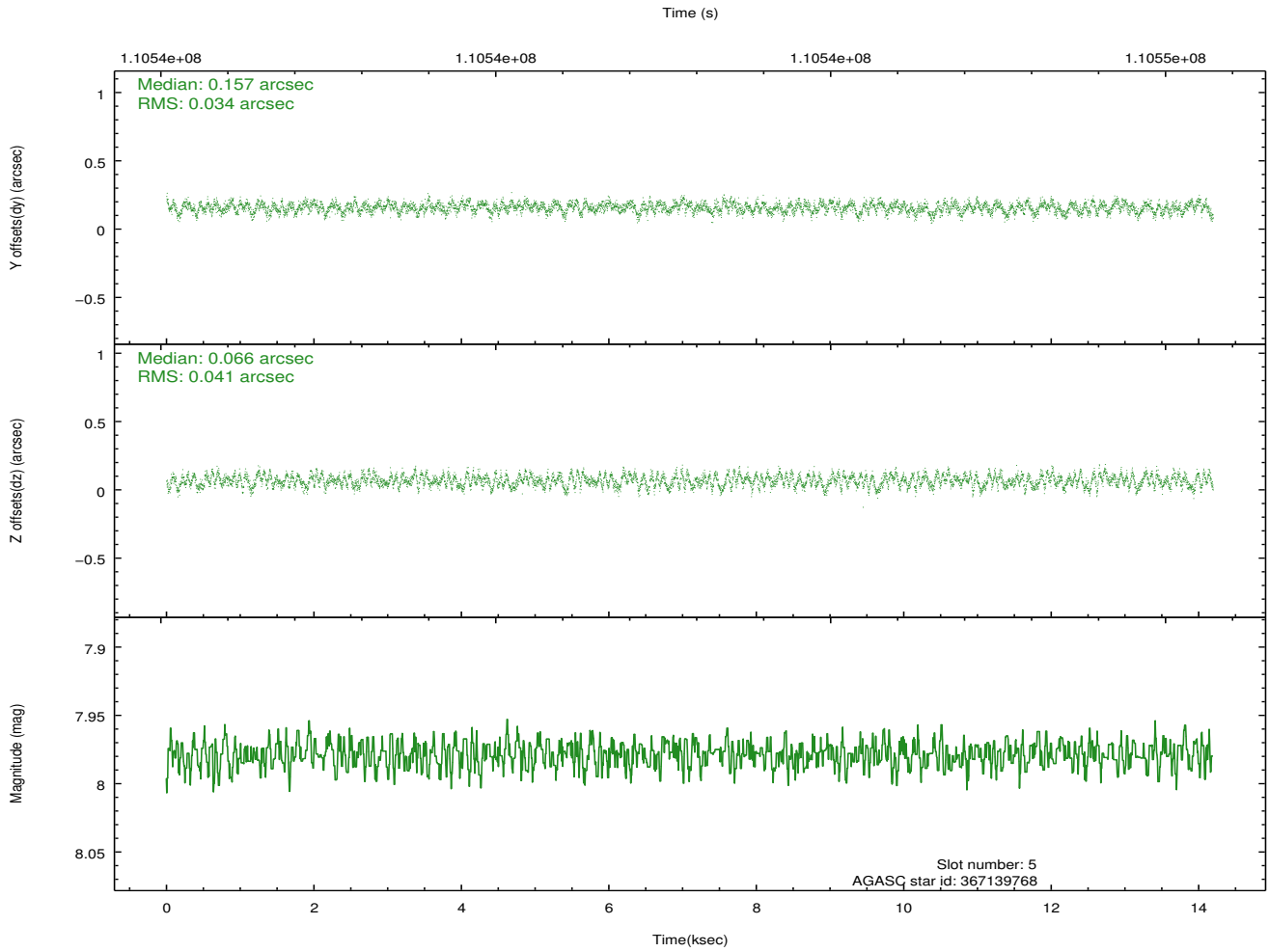
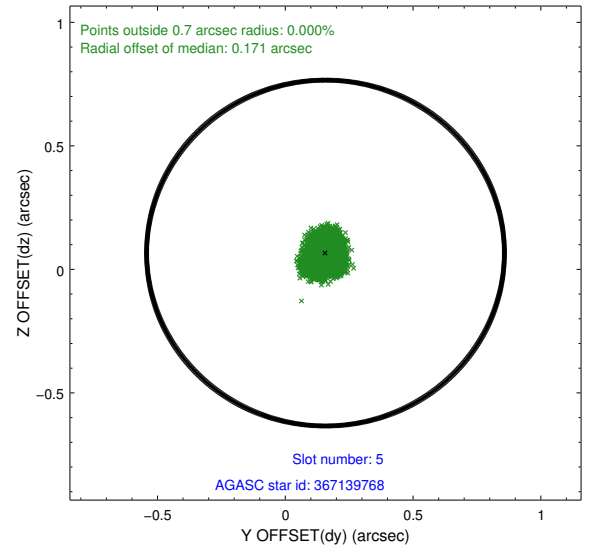
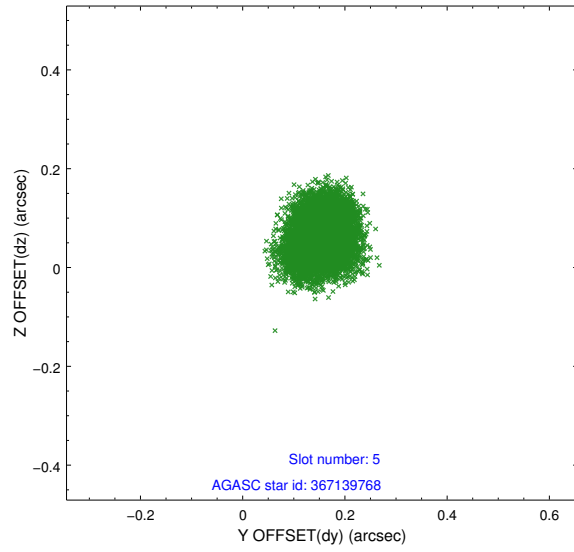
2.4.1 Slot 3



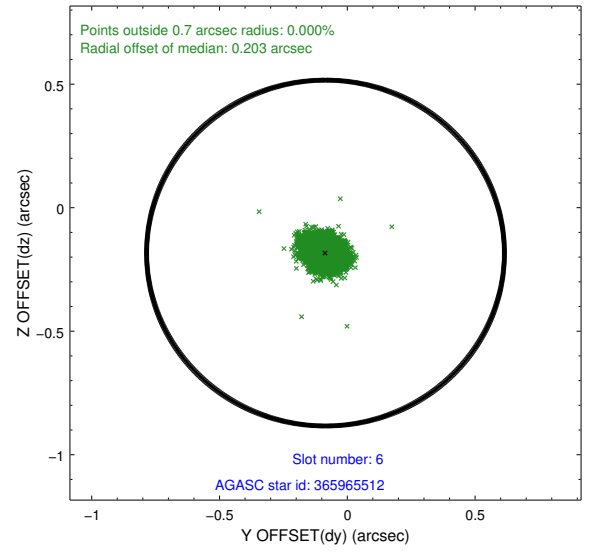
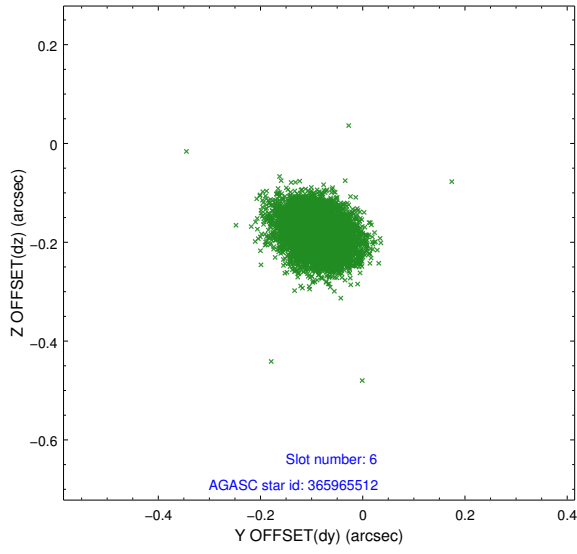
2.4.2 Slot 4



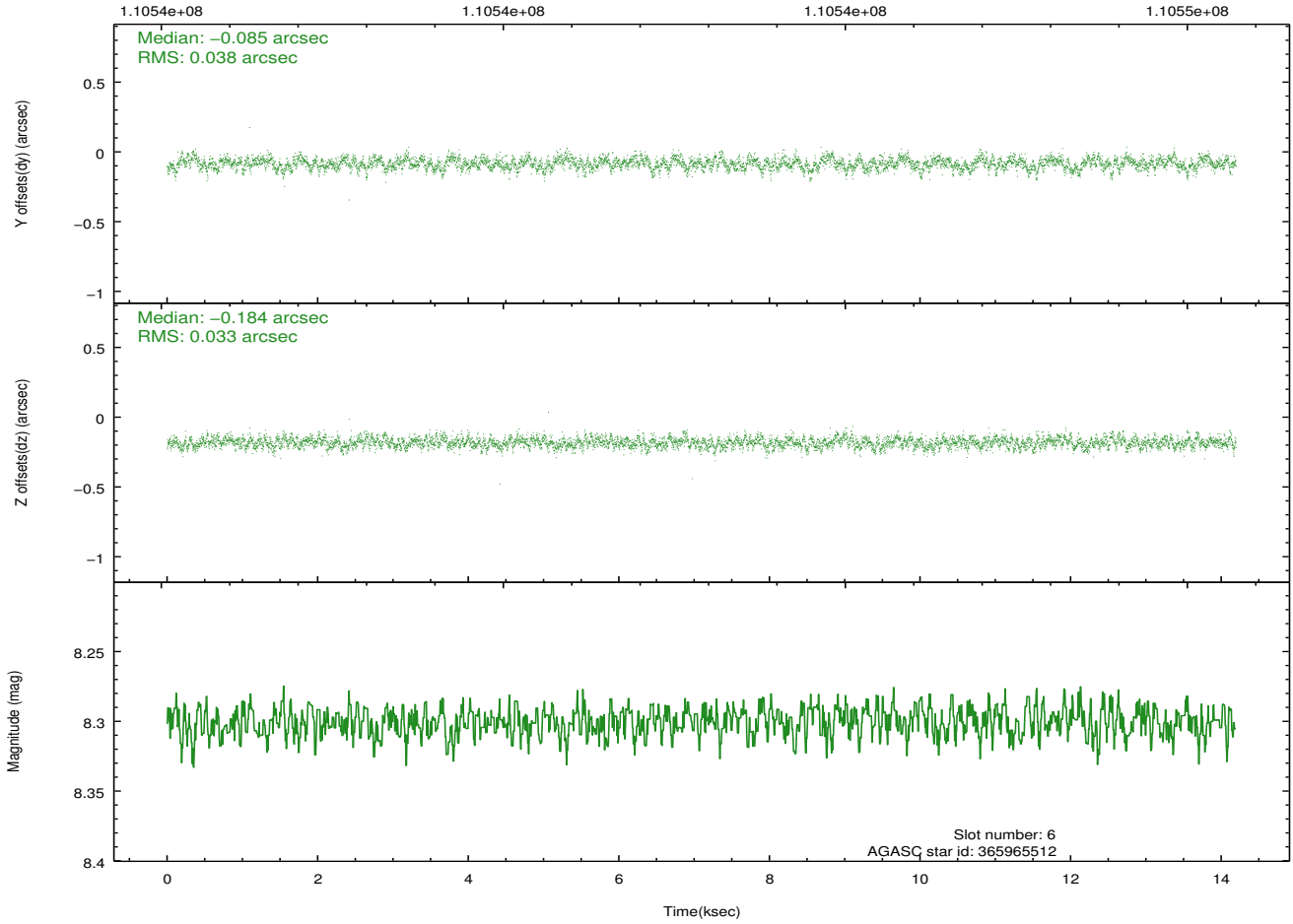
2.4.3 Slot 5



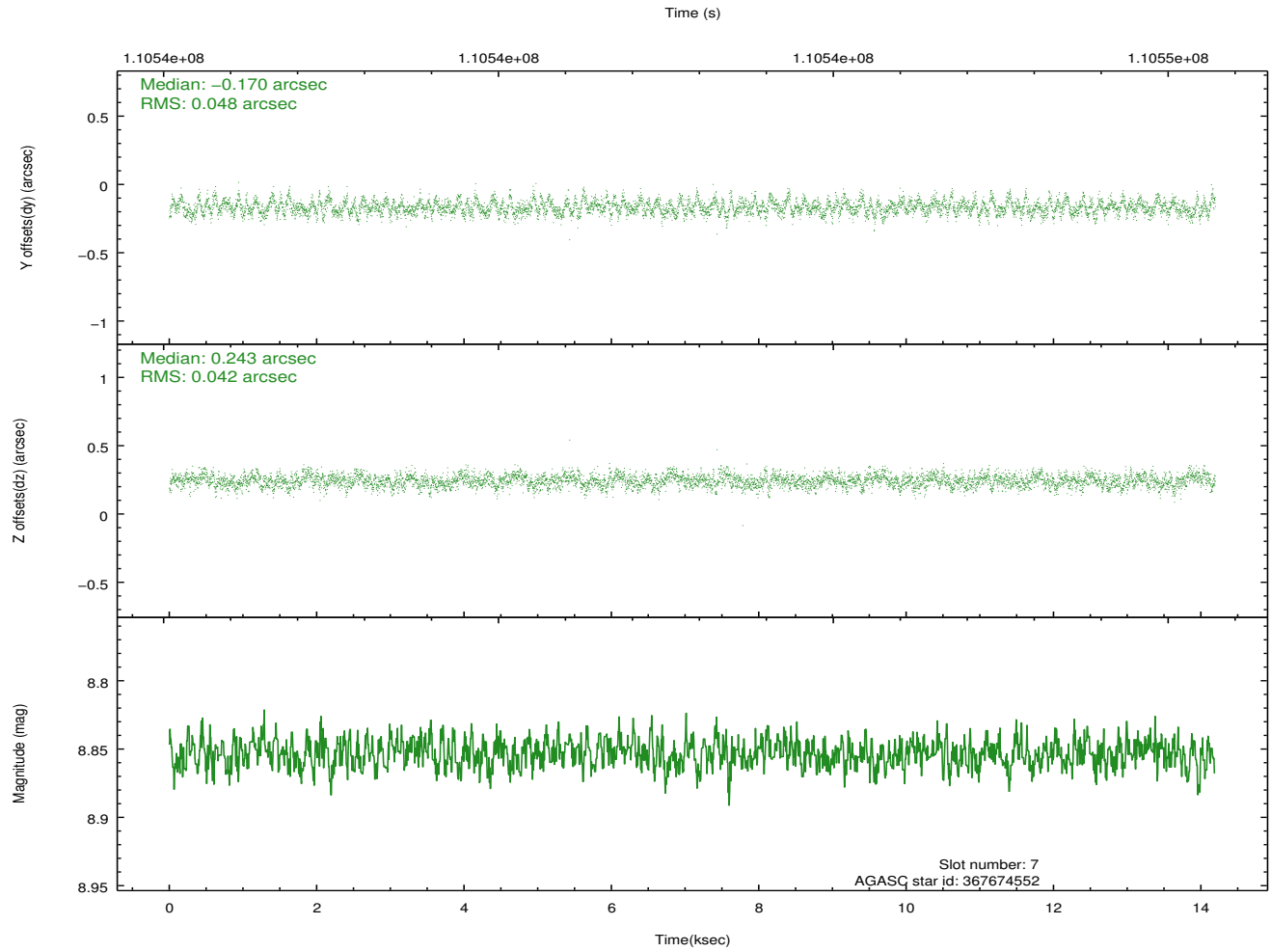
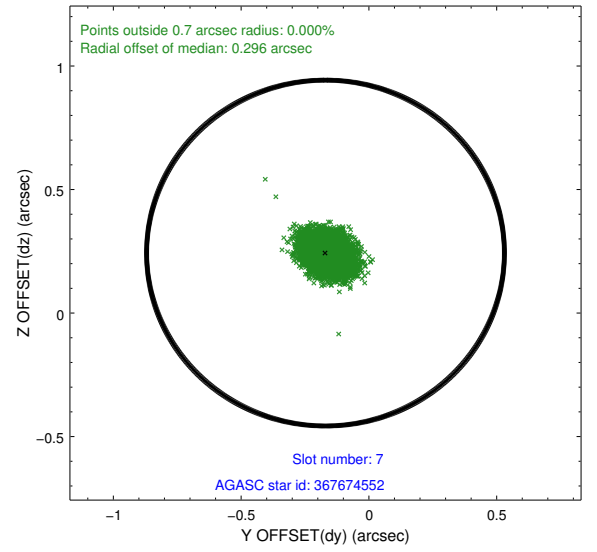
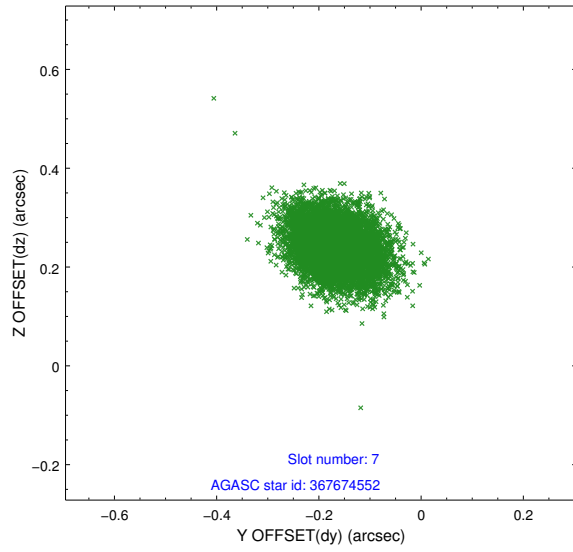
2.4.4 Slot 6



Time (s)

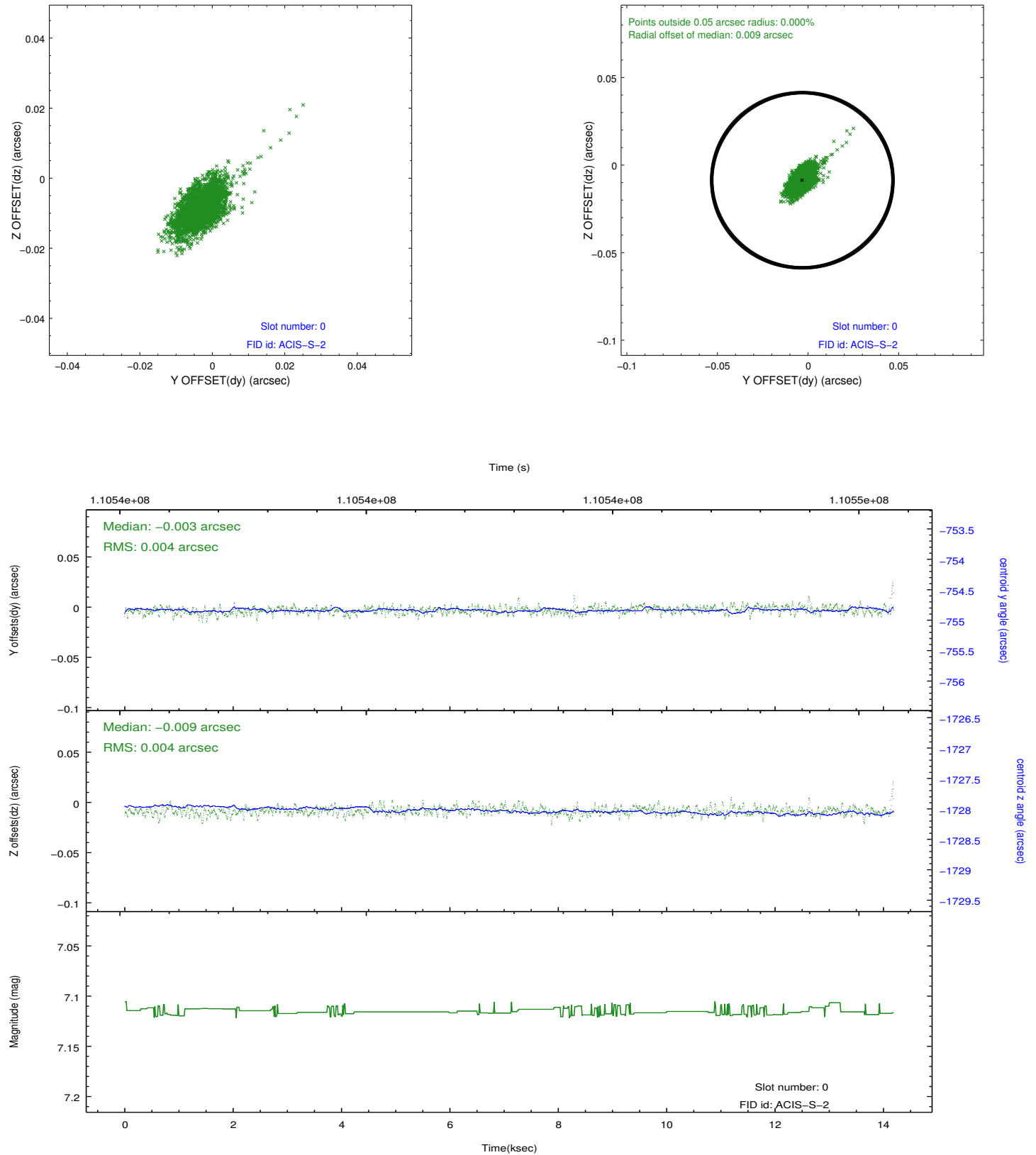


2.4.5 Slot 7

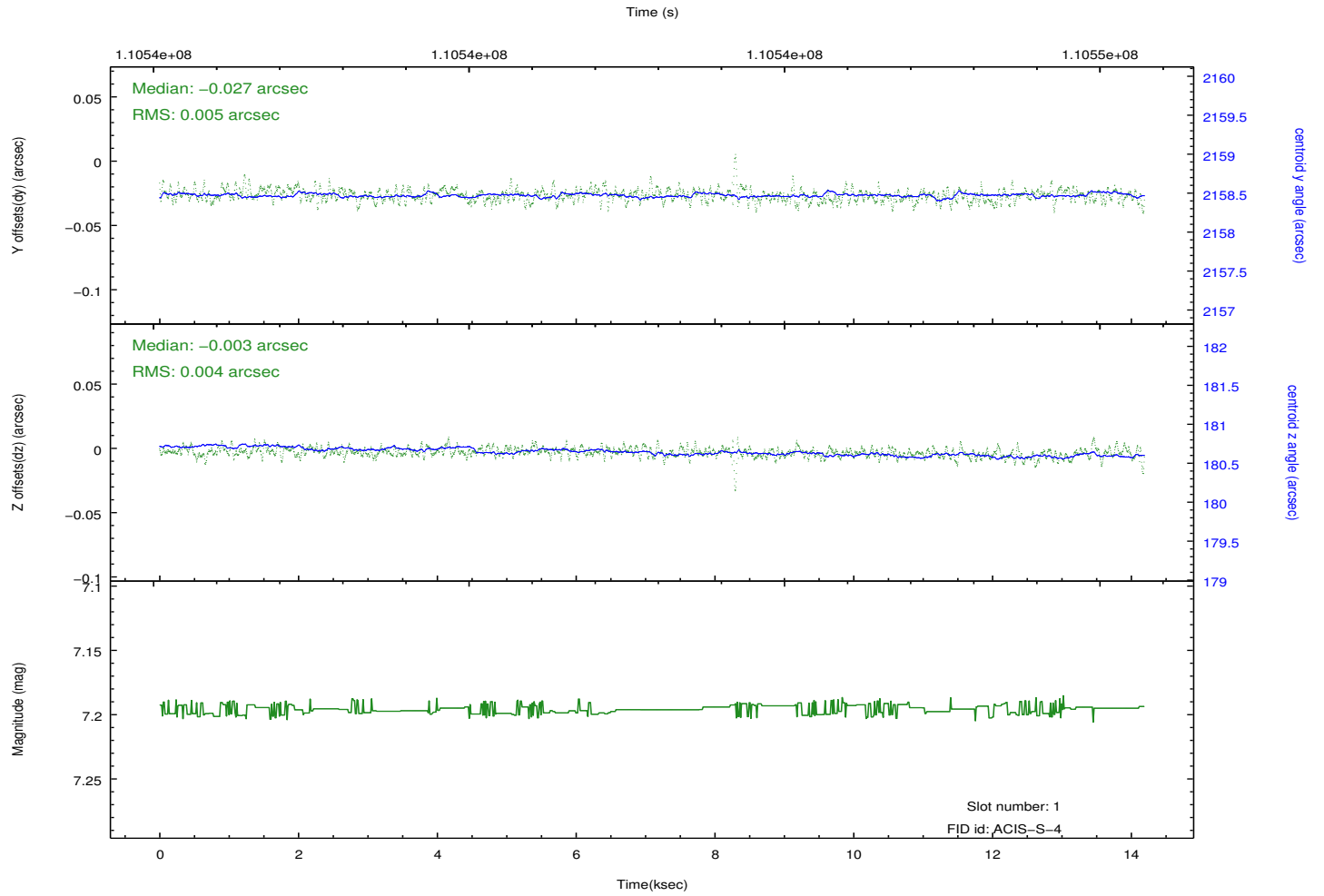
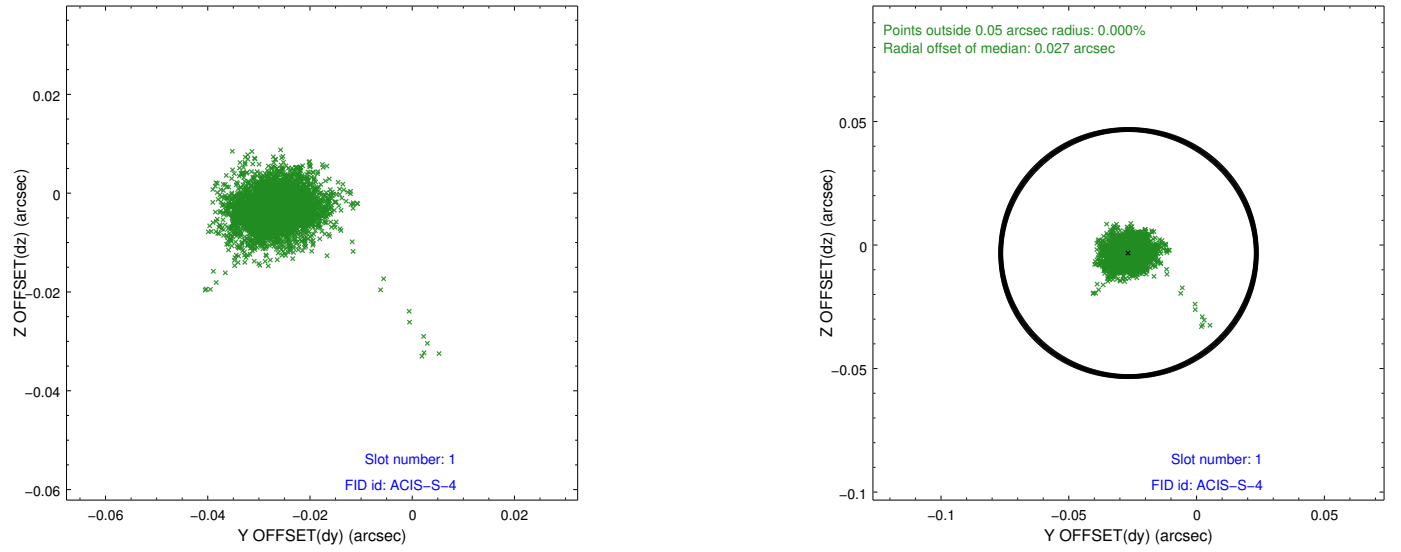


2.5 FID Slots

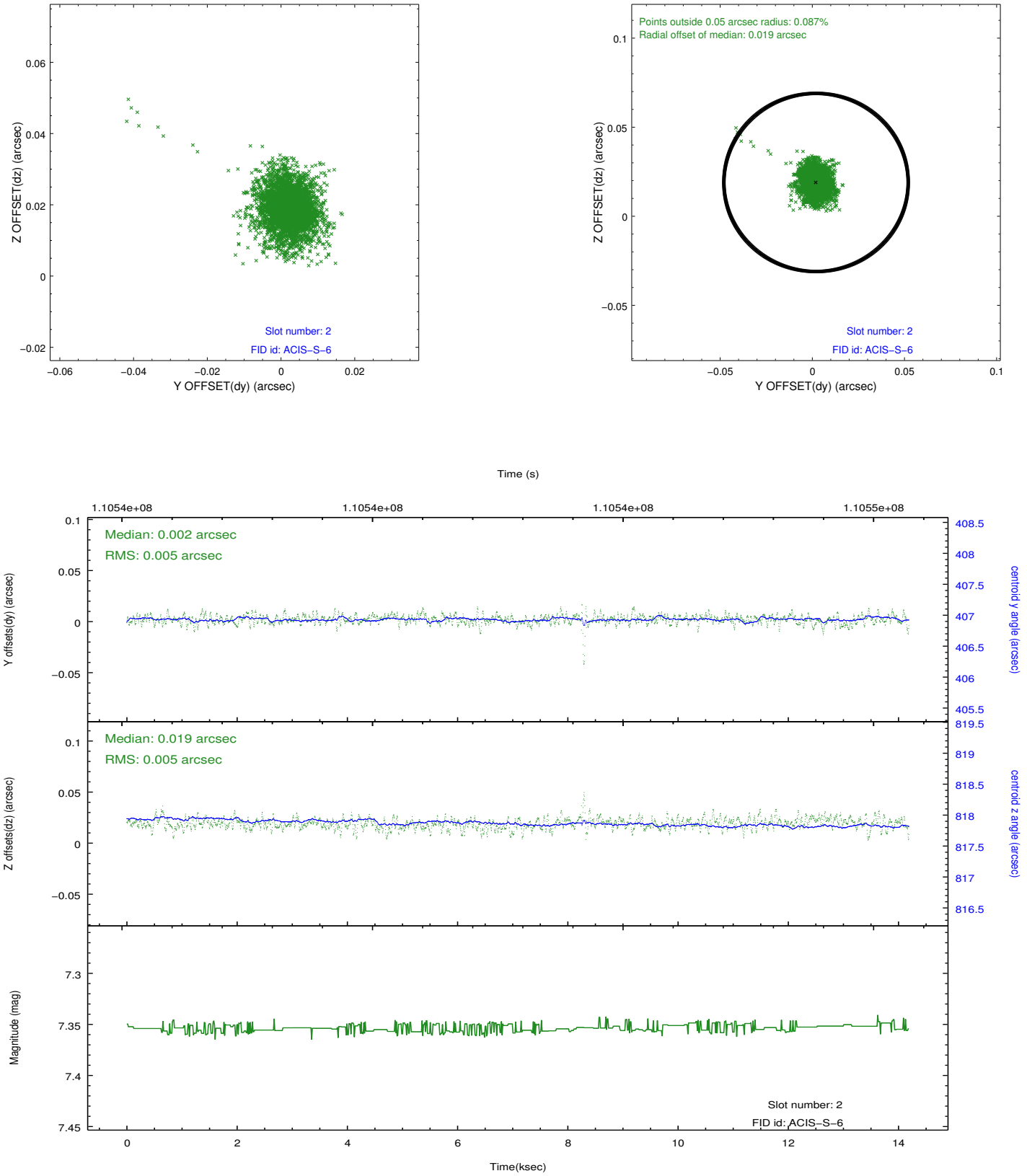
2.5.1 Slot 0



2.5.2 Slot 1



2.5.3 Slot 2



A Summary

A.1 Status

V&V Scientist	Beth Sundheim
V&V Date (YYYY-MM-DD)	2012.09.21
V&V Edition	1
V&V Disposition and Status	OK
V&V Charge Time	13.8

A.2 Comments

Charge time for this observation remains at previous value of 13.8 ksec.