

# V&V Reference Report

## L2 ASCDS Version : 8.4.5

Observation 2046 - L2 Version 3  
Chandra X-Ray Center

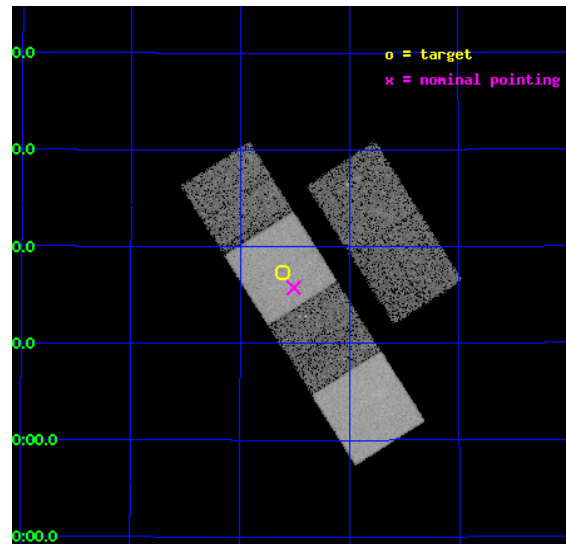
L2 Processing Date : Sep 3 2012

## Contents

<b>1</b>	<b>Front</b>	<b>2</b>
<b>2</b>	<b>OBI</b>	<b>3</b>
2.1	OBI . . . . .	3
2.1.1	Images . . . . .	3
2.1.2	Bias . . . . .	3
2.1.3	Parameters . . . . .	4
2.1.4	Events . . . . .	4
2.2	Compared Parameters . . . . .	5
2.3	Aspect . . . . .	6
2.4	Star Slots . . . . .	9
2.4.1	Slot 3 . . . . .	9
2.4.2	Slot 4 . . . . .	10
2.4.3	Slot 5 . . . . .	11
2.4.4	Slot 6 . . . . .	12
2.4.5	Slot 7 . . . . .	13
2.5	FID Slots . . . . .	14
2.5.1	Slot 0 . . . . .	14
2.5.2	Slot 1 . . . . .	15
2.5.3	Slot 2 . . . . .	16
<b>A</b>	<b>Summary</b>	<b>17</b>
A.1	Status . . . . .	17
A.2	Comments . . . . .	17

# 1 Front

seq_num	600180	Sequence number
obs_id	2046	Observation id
title	2001: A SPACE CENSUS -- SUPERSOFT X-RAY SOURCES AND OTHER X-RAY SOURCES IN M31	Proposal title
observer	Dr. R. Di Stefano	Principal investigator
object	M31_1	Source name
dtcycle	0	&#160
cycle	P	events from which exps? Prim/Second/Both
ra_targ	9.652083	Observer's specified target RA [deg]
dec_targ	40.288889	Observer's specified target Dec [deg]
ra_nom	9.6271337139714	Nominal RA [deg]
dec_nom	40.262409410958	Nominal Dec [deg]
roll_nom	237.57139088158	Nominal Roll [deg]
revision	3	Processing version of data
ontime	14952.099716395	Sum of GTIs [s]
livetime	14762.767226713	Livetime [s]
ontime2	14955.38174656	Sum of GTIs [s]
ontime3	14955.217586562	Sum of GTIs [s]
ontime5	14955.299666554	Sum of GTIs [s]
ontime6	14955.258626565	Sum of GTIs [s]
ontime7	14952.099716395	Sum of GTIs [s]
ontime8	14955.176546559	Sum of GTIs [s]
l2events	151732	Number of level 2 events

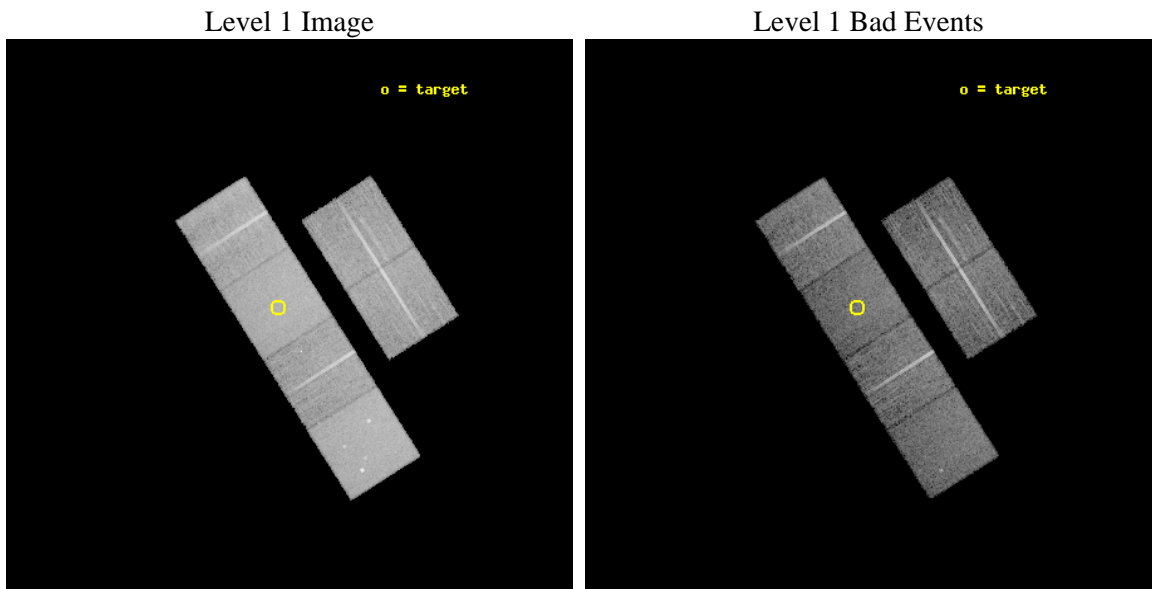




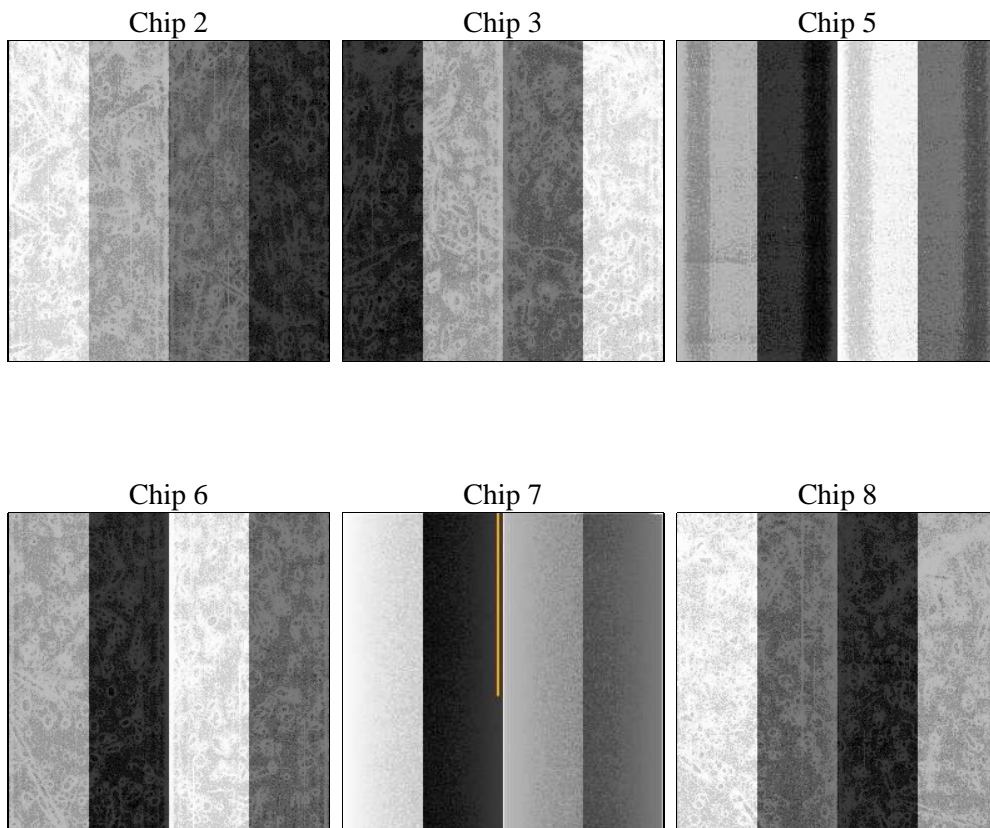
## 2 OBI

### 2.1 OBI

#### 2.1.1 Images



#### 2.1.2 Bias



### 2.1.3 Parameters

obi_num	0	Obi number	sched_exp_time	15000.000000	[s] Scheduled observation exposure time
ascdsver	8.4.5	Processing system revision	ontime	14952.099716395	Sum of GTIs [s]
caldsver	4.5.1.1	&#160	ontime2	14955.38174656	Sum of GTIs [s]
date	2012-09-03T03:14:42	Date and time of file creation	ontime3	14955.217586562	Sum of GTIs [s]
revision	3	Processing version of data	ontime5	14955.299666554	Sum of GTIs [s]
			ontime6	14955.258626565	Sum of GTIs [s]
			ontime7	14952.099716395	Sum of GTIs [s]
			ontime8	14955.176546559	Sum of GTIs [s]
			l1events	638621	Number of level 1 events

### 2.1.4 Events

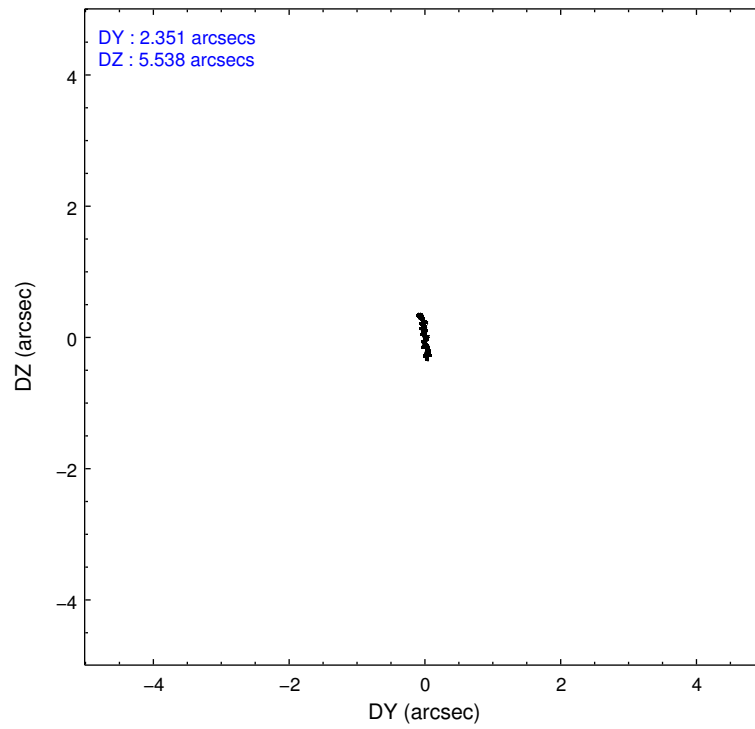
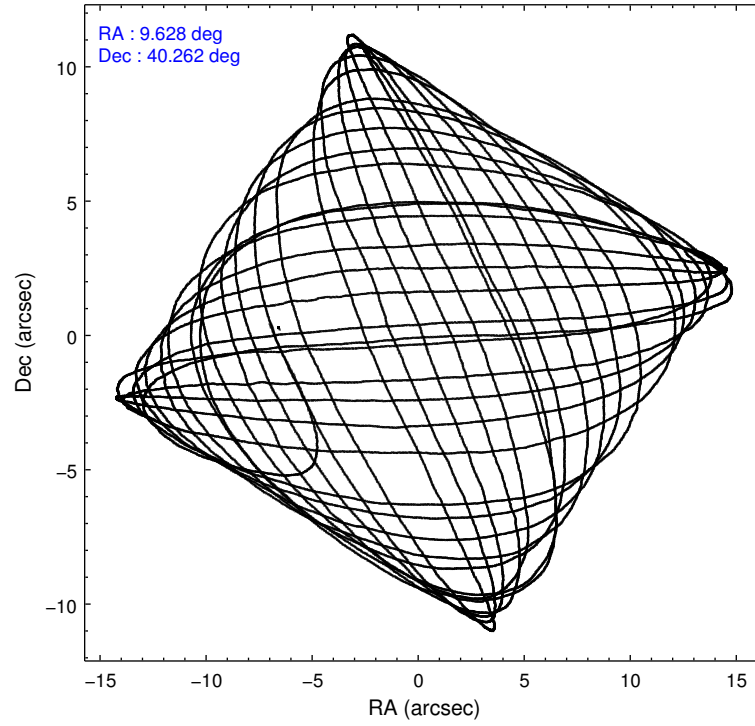
	ccd 2	ccd 3	ccd 5	ccd 6	ccd 7	ccd 8		ccd 2	ccd 3	ccd 5	ccd 6	ccd 7	ccd 8
level 1 events	91990	88890	132523	90328	121235	113655	grade 0 events	4273	4379	8305	4764	5635	7438
rejected events	81958	78804	67141	79385	66745	91061		4%	4%	6%	5%	4%	6%
rejected %	89%	88%	50%	87%	55%	80%	grade 1 events	48	30	171	46	113	51
								0%	0%	0%	0%	0%	0%
							grade 2 events	2122	2047	18823	2117	10723	4575
								2%	2%	14%	2%	8%	4%
							grade 3 events	960	974	3310	1027	4937	2542
								1%	1%	2%	1%	4%	2%
							grade 4 events	934	1037	3169	1001	4966	2439
								1%	1%	2%	1%	4%	2%
							grade 5 events	2953	3267	9814	3740	10796	4740
								3%	3%	7%	4%	8%	4%
							grade 6 events	1749	1654	31807	2040	28251	5609
								1%	1%	24%	2%	23%	4%
							grade 7 events	78951	75502	57124	75593	55814	86261
								85%	84%	43%	83%	46%	75%

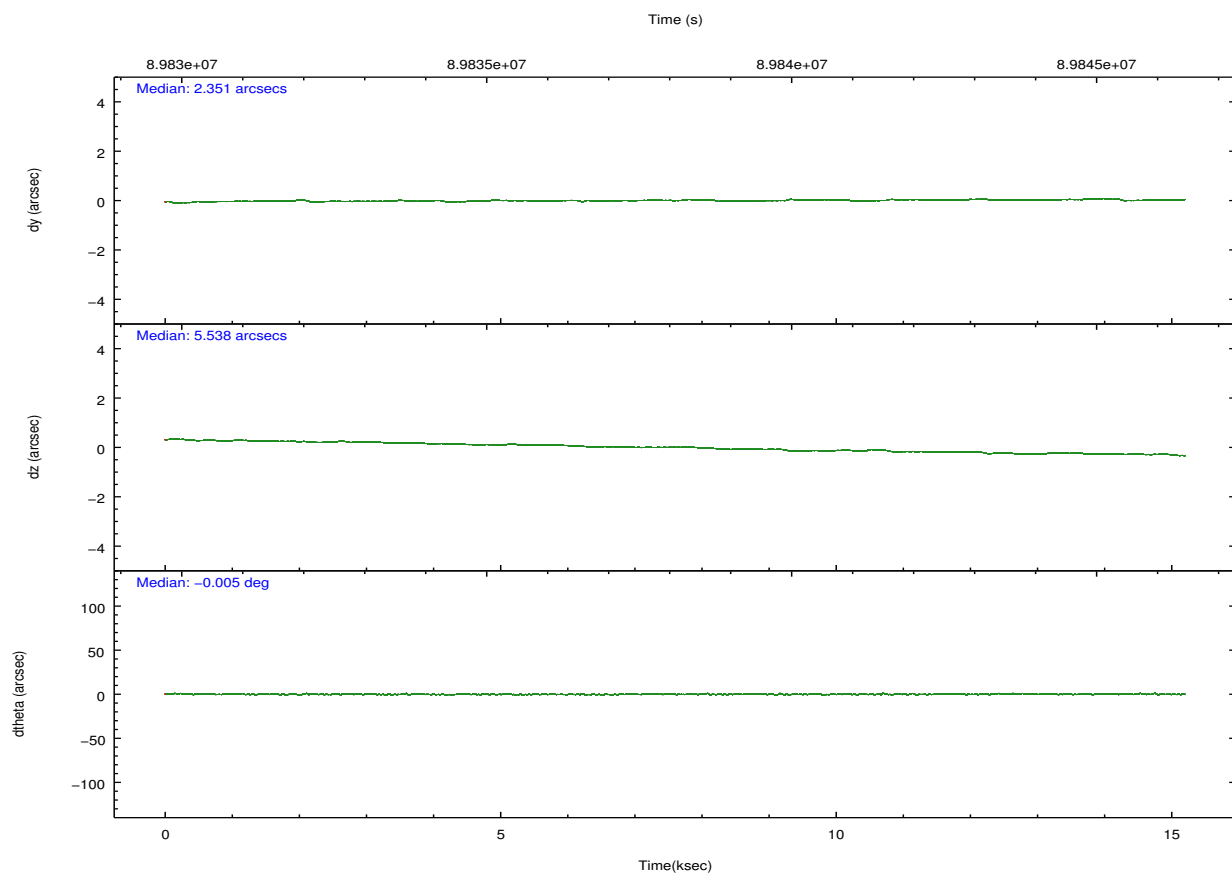
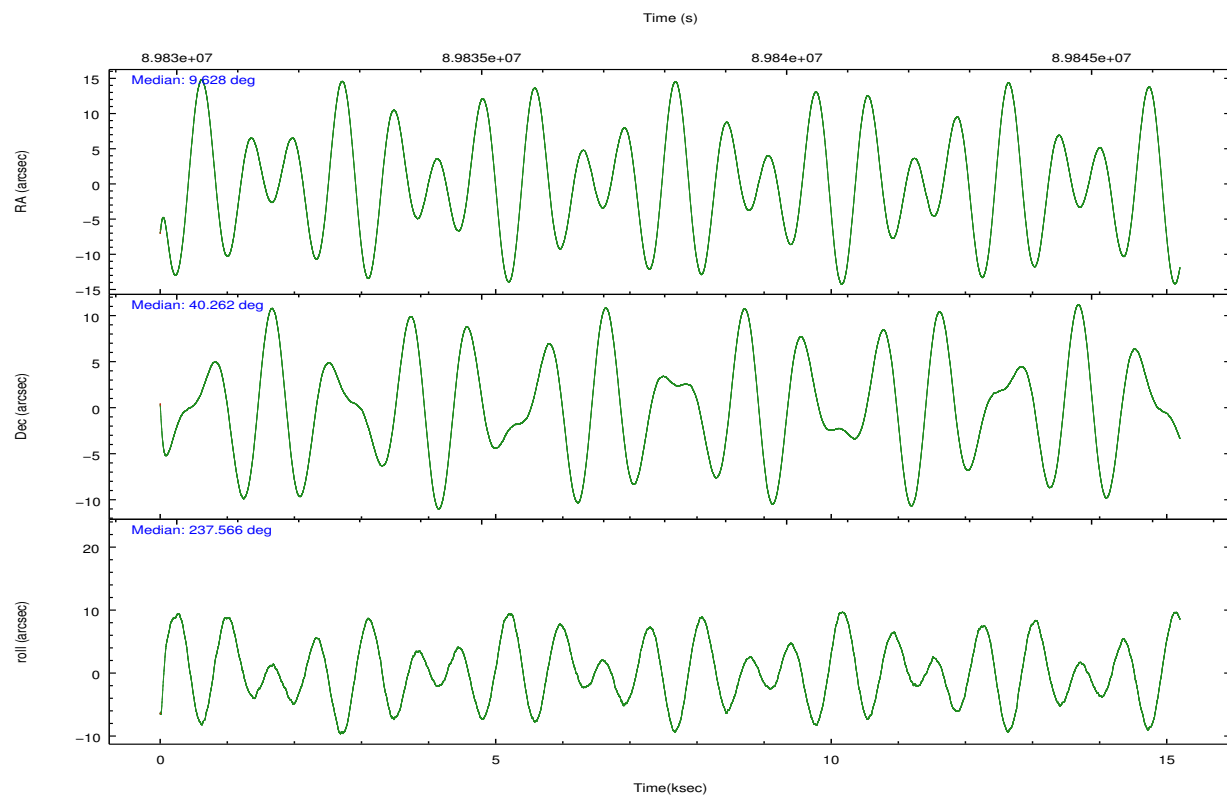
## 2.2 Compared Parameters

Parameter	Planned	Actual
Instrument	ACIS	ACIS
Detector	ACIS-235678	ACIS-235678
Grating	NONE	NONE
Data mode	FAINT	FAINT
Observation mode	POINTING	POINTING
[deg] Pointing RA	9.628427	9.627133713971435
[deg] Pointing Dec	40.289751	40.26240941095849
[deg] Pointing Roll	237.413938	237.5713908815815
[mm] SIM focus pos	-0.684267	-0.6828225247311905
[mm] SIM defocus	0	0.001444936568705701
[mm] SIM translation stage pos	-190.132523	-190.1400660498719
[mm] SIM translation stage offset	0	0.00754346686406393
[s] Observation start time (MET)	89830684.184000	89829719.79055201
Observation start date	2000-11-05T16:57:00	2000-11-05T16:41:59
[s] Observation end time (MET)	89845684.184000	89845836.89116199
Observation end date	2000-11-05T21:07:00	2000-11-05T21:10:36
Read mode	TIMED	TIMED

Parameter	Planned	Actual
Obspar format version number	7	7
Obspar file type	PREDICTED	ACTUAL
Obspar update status	NONE	UPDATED
Number of optional ACIS chips dropped	0	0
On-chip summing requested	N	N
Subarray requested	NONE	NONE
Alternating exposures requested	N	N
[s] Primary exposure time	0.000000	3.2

## 2.3 Aspect



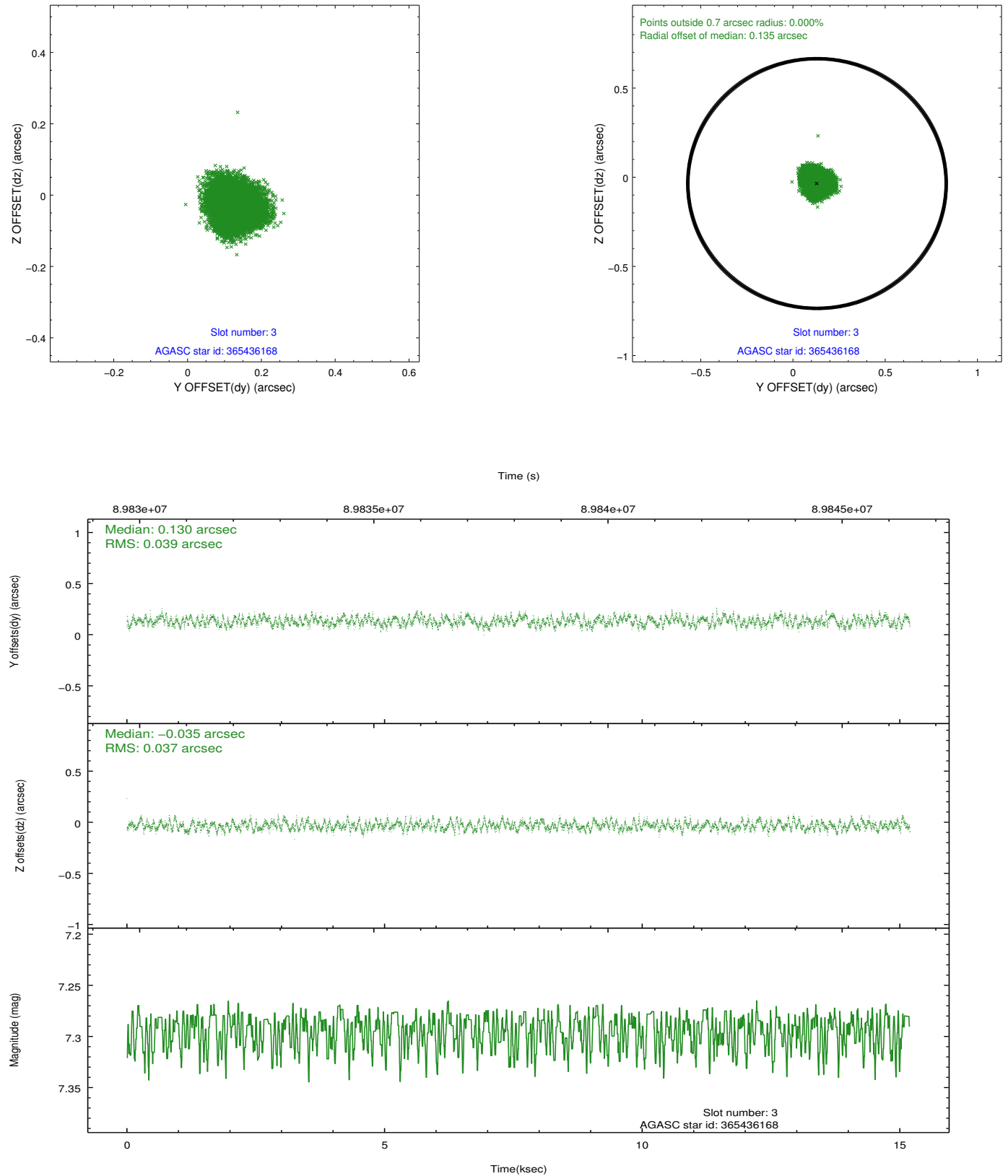


### Slot Statistics

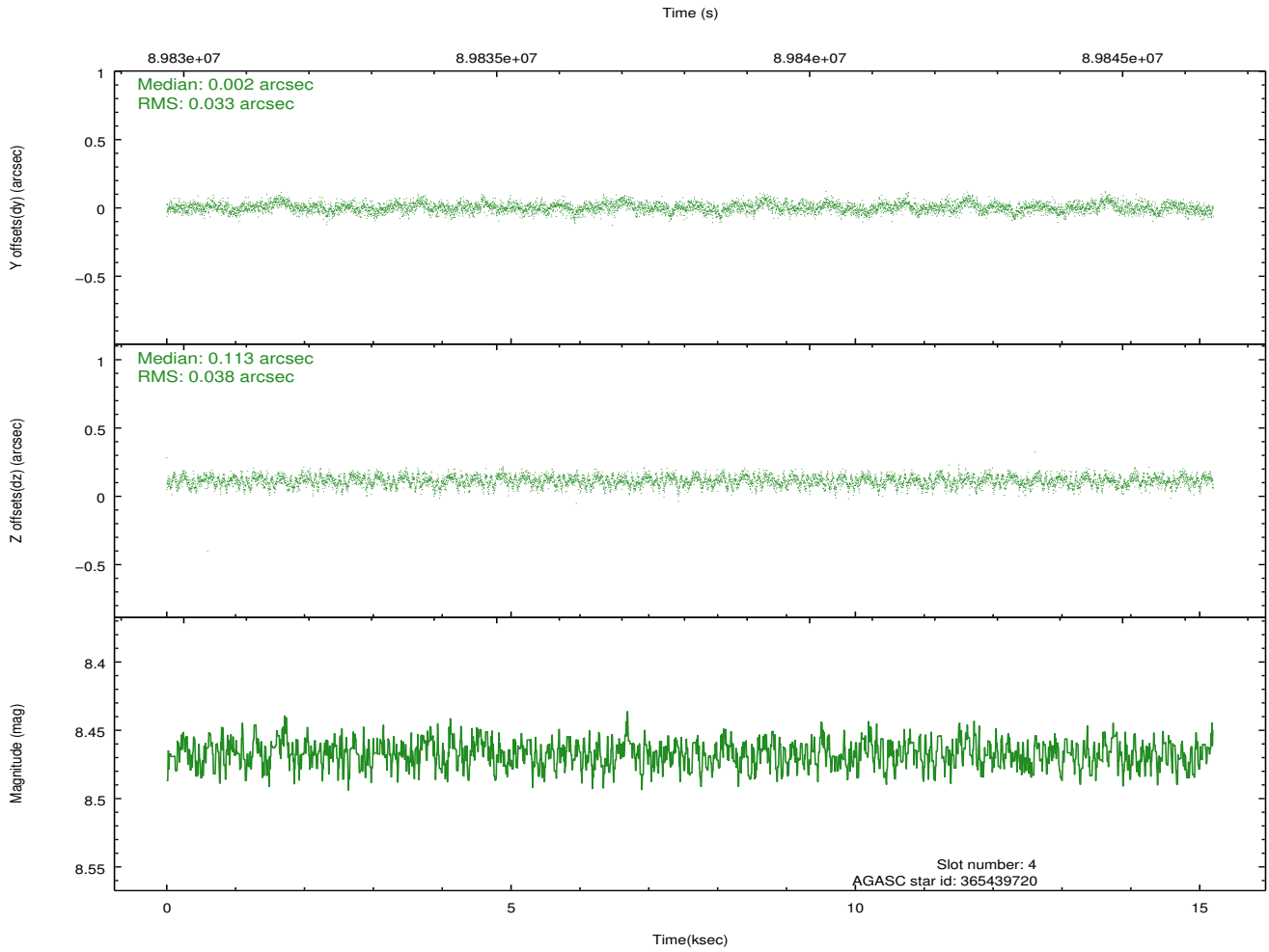
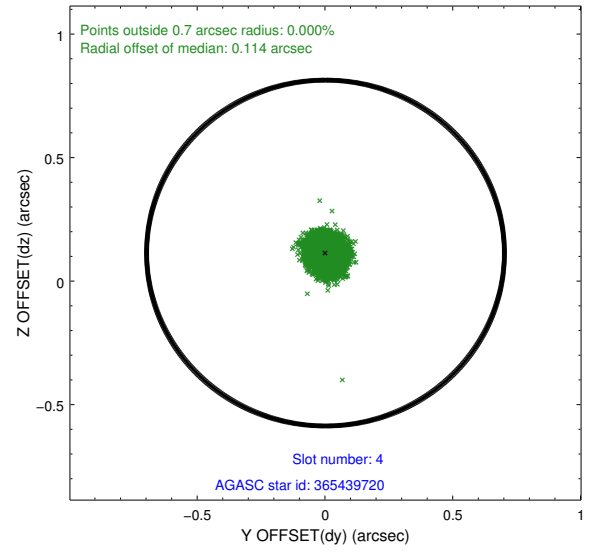
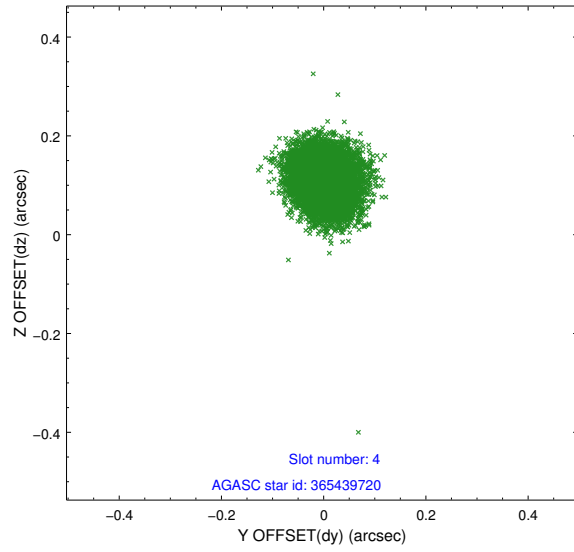
slot	status	id	mag	n_pts	med_dy	med_dz	dr1	dr2	ra	dec	mean_y	mean_z
0	FID	ACIS-S-2	7.11	3707	-0.046	-0.006	0.007	0.012	0.000000	0.000000	-754.99	-1726.68
1	FID	ACIS-S-4	7.20	3707	-0.002	0.024	0.006	0.010	0.000000	0.000000	2158.16	181.59
2	FID	ACIS-S-5	7.24	3707	0.017	-0.009	0.007	0.011	0.000000	0.000000	-1807.42	175.49
3	GUIDE	365436168	7.29	7413	0.130	-0.035	0.059	0.088	9.360006	40.332380	267.09	-705.04
4	GUIDE	365439720	8.47	7409	0.002	0.113	0.054	0.086	9.704623	40.431022	-540.58	-99.17
5	GUIDE	367144424	8.66	7409	-0.045	-0.097	0.077	0.124	10.464515	40.309136	-1303.96	1889.18
6	GUIDE	365431072	8.99	7412	-0.113	-0.006	0.074	0.121	9.376278	41.092224	-2066.25	-2133.96
7	GUIDE	365445896	9.08	7411	0.018	0.023	0.064	0.105	9.846913	39.546013	1928.73	1951.50

## 2.4 Star Slots

### 2.4.1 Slot 3

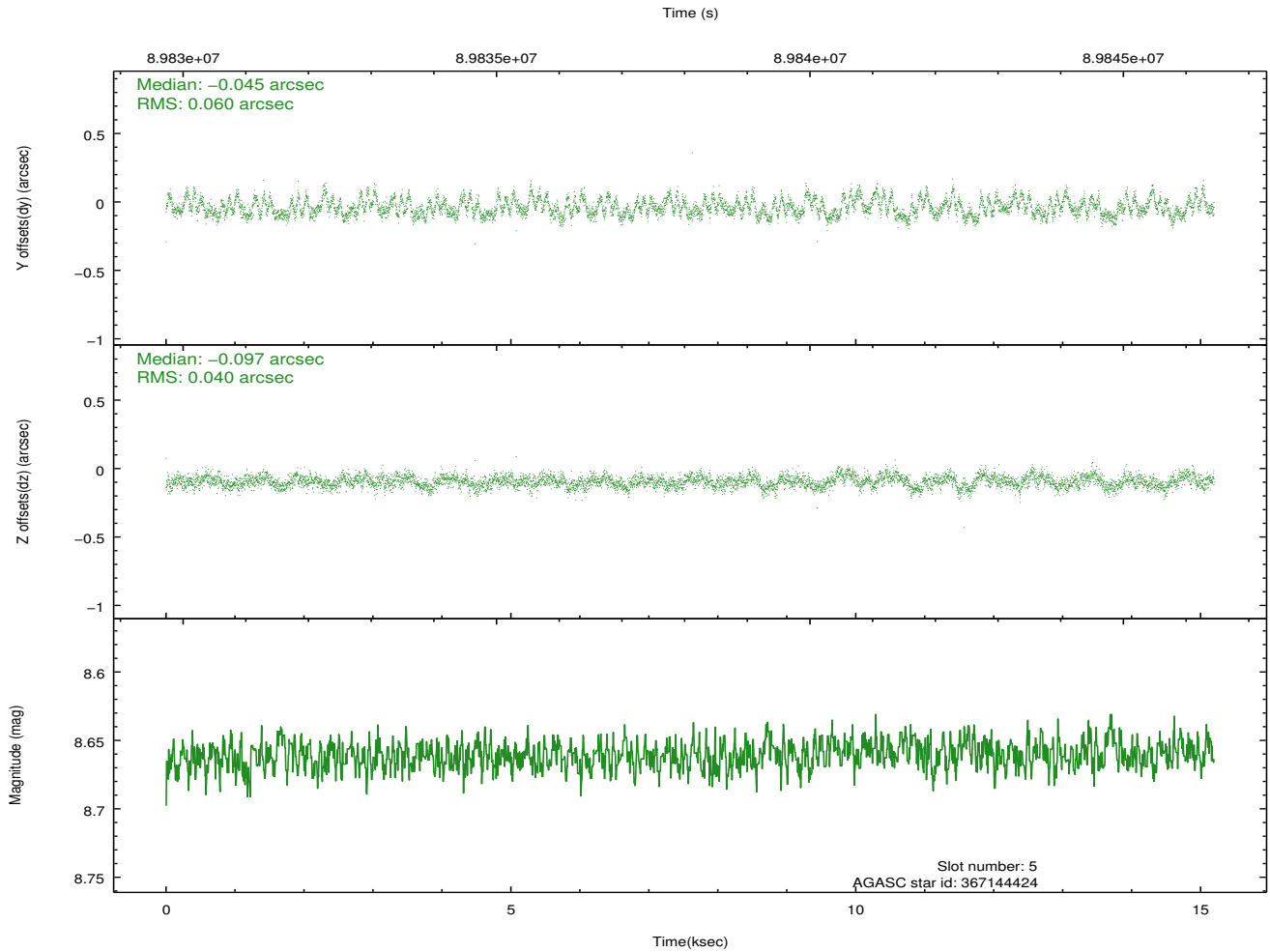
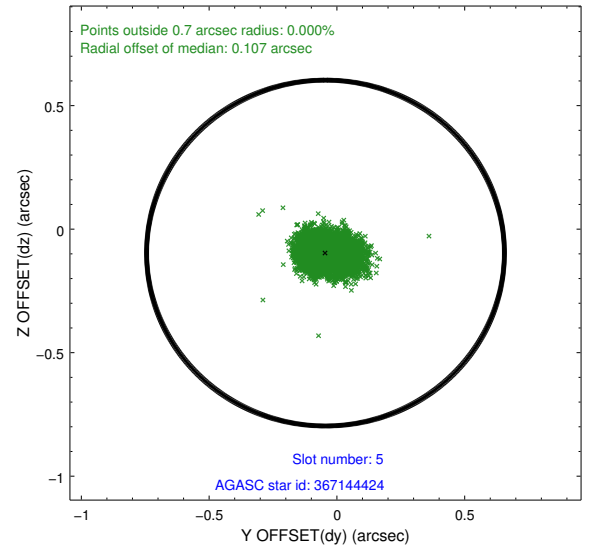
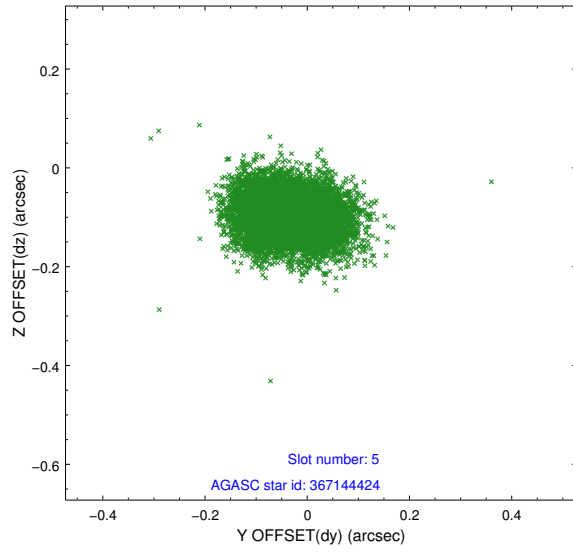


## 2.4.2 Slot 4

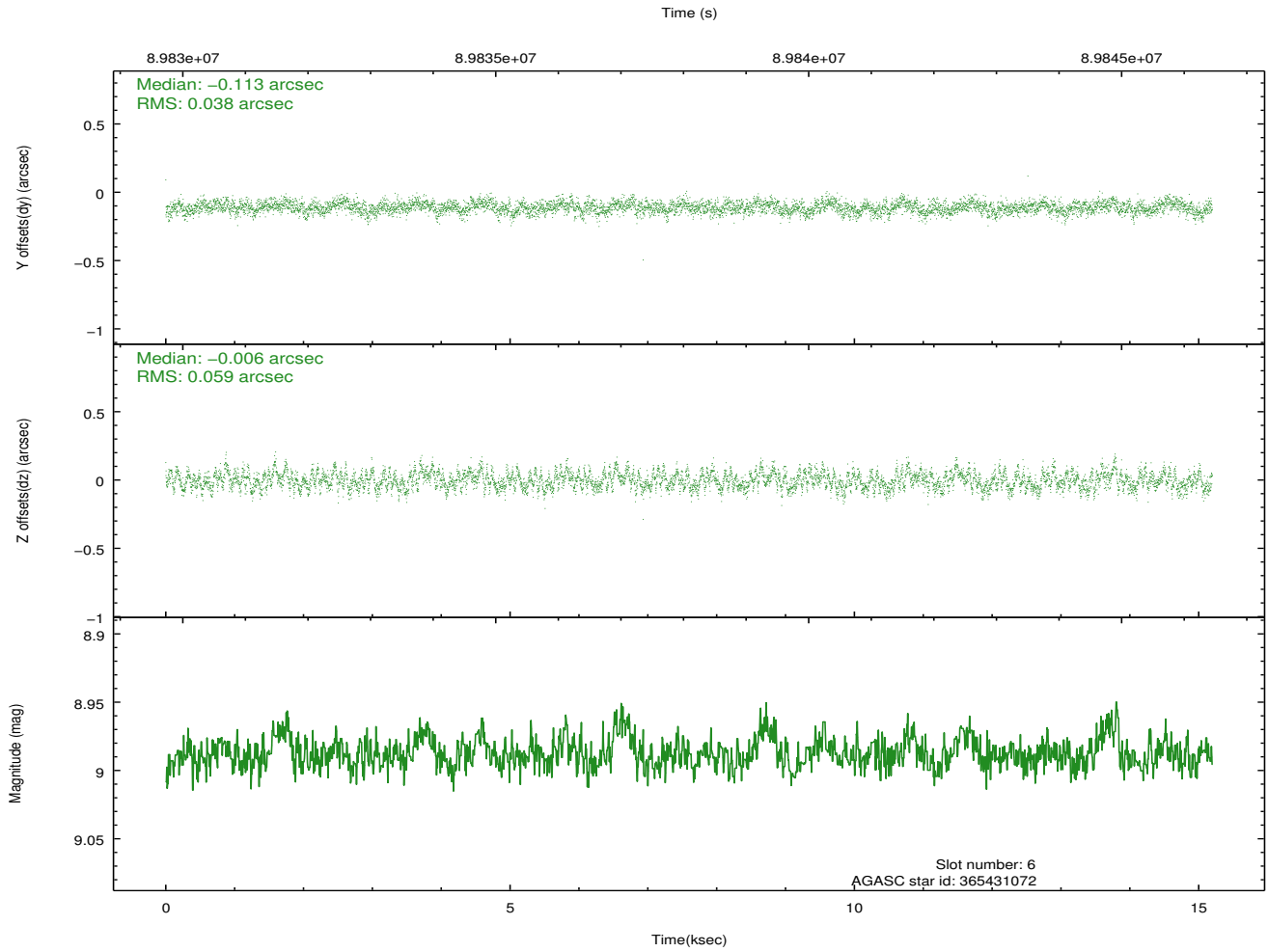
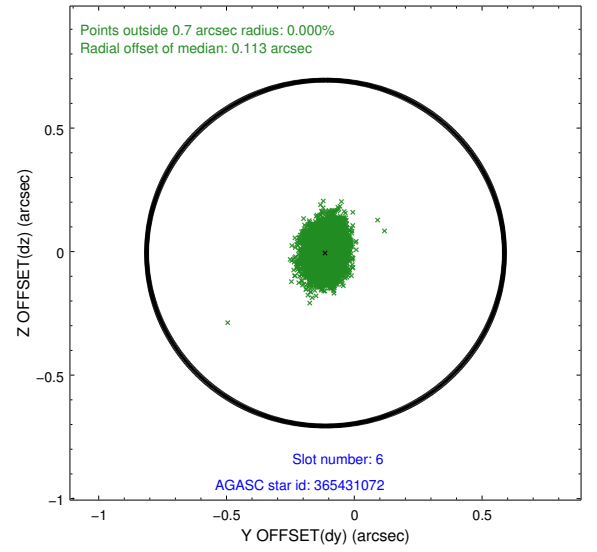
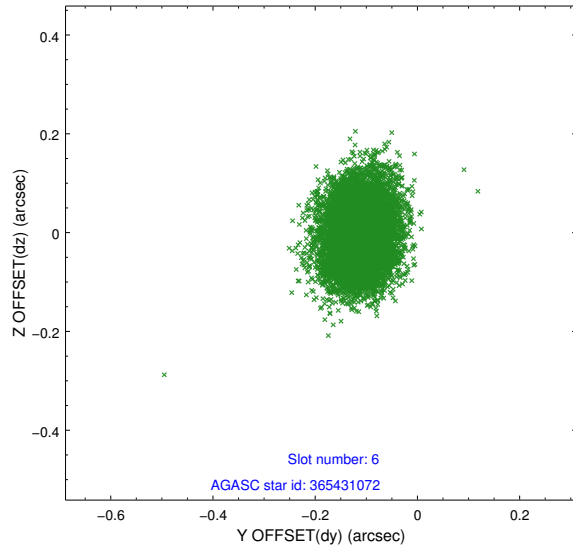




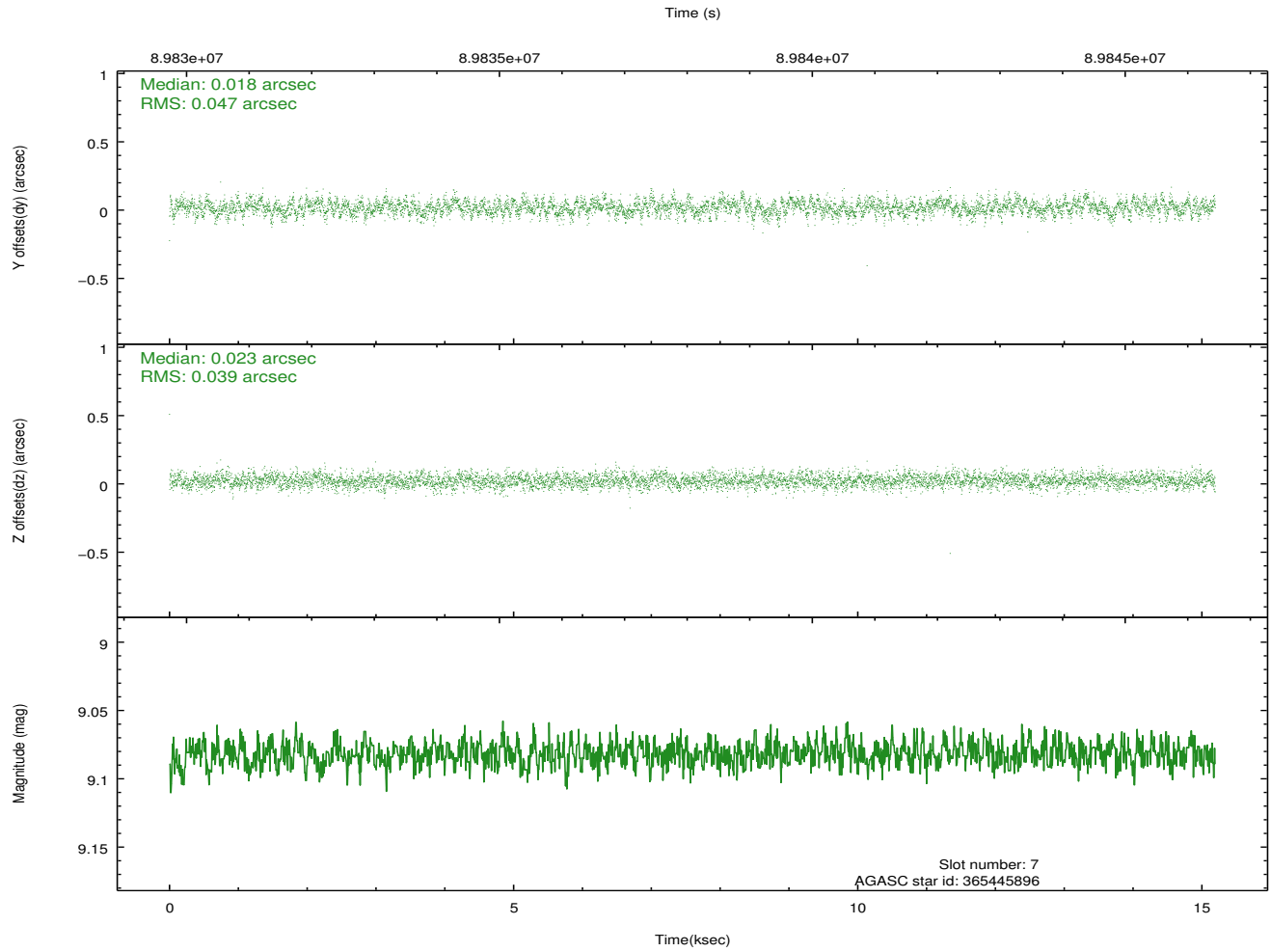
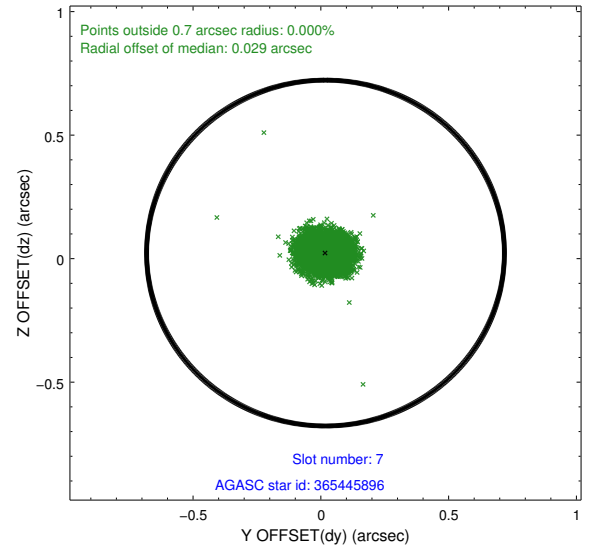
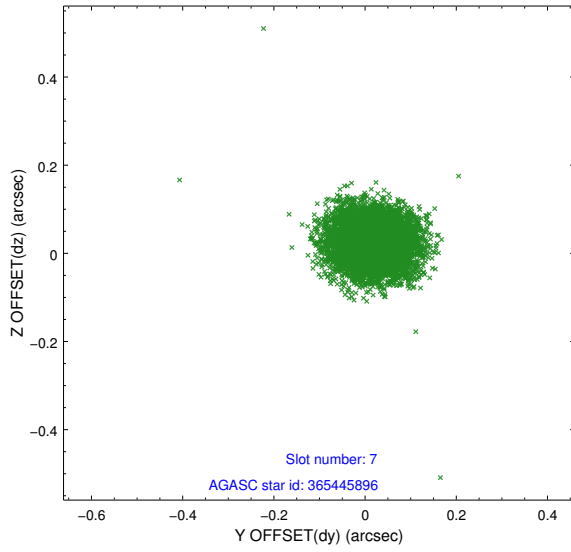
### 2.4.3 Slot 5



## 2.4.4 Slot 6

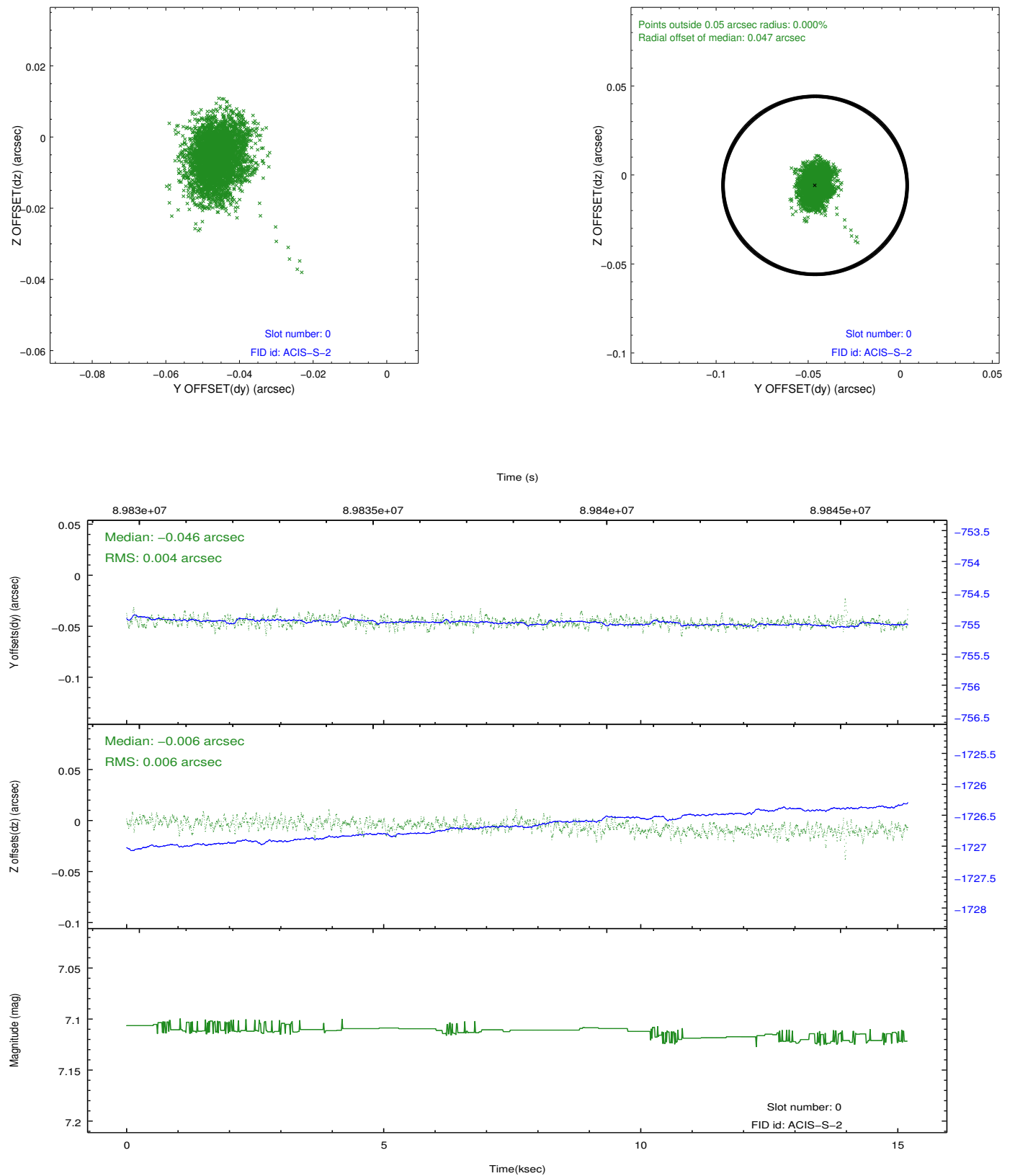


## 2.4.5 Slot 7

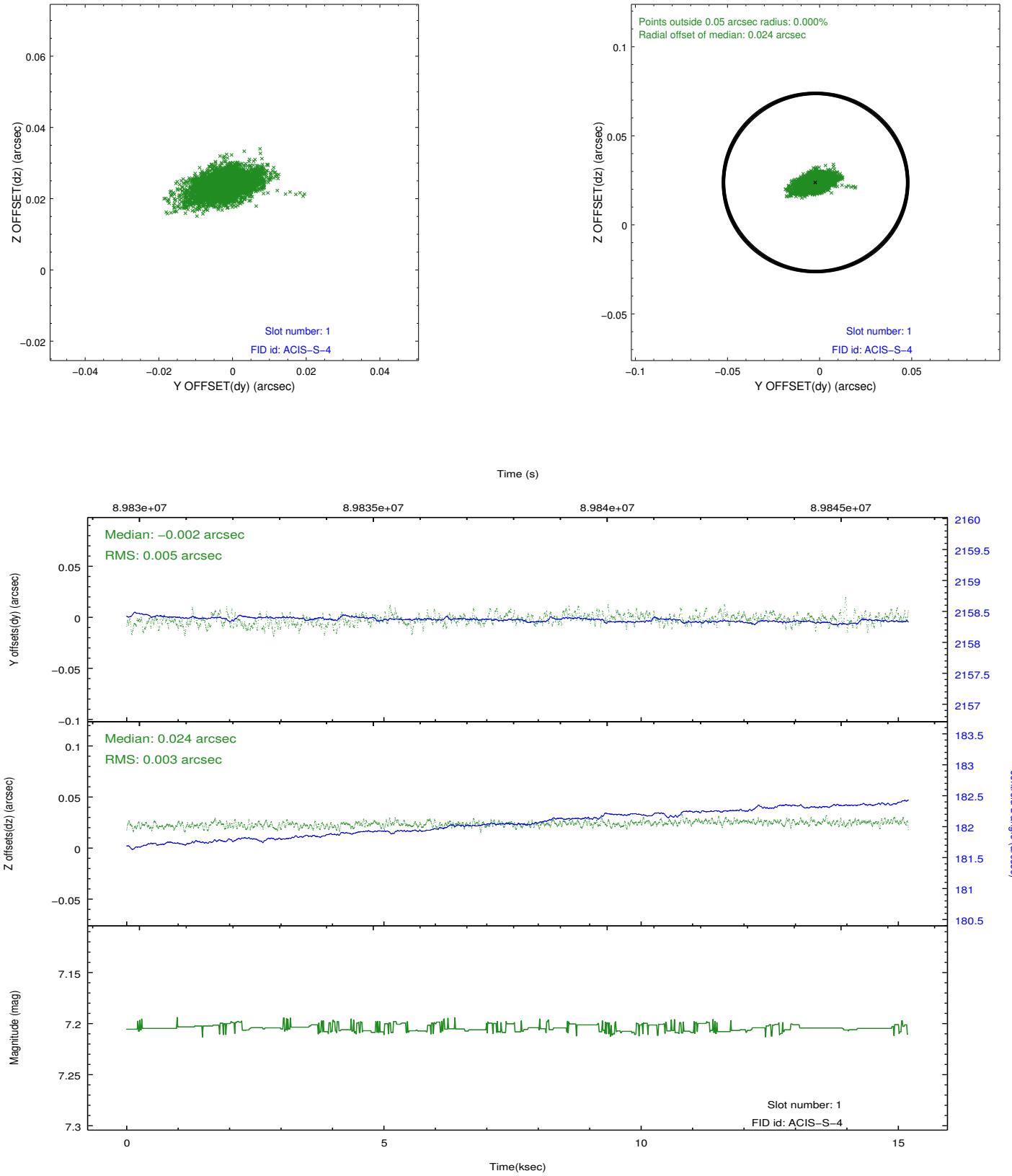


## 2.5 FID Slots

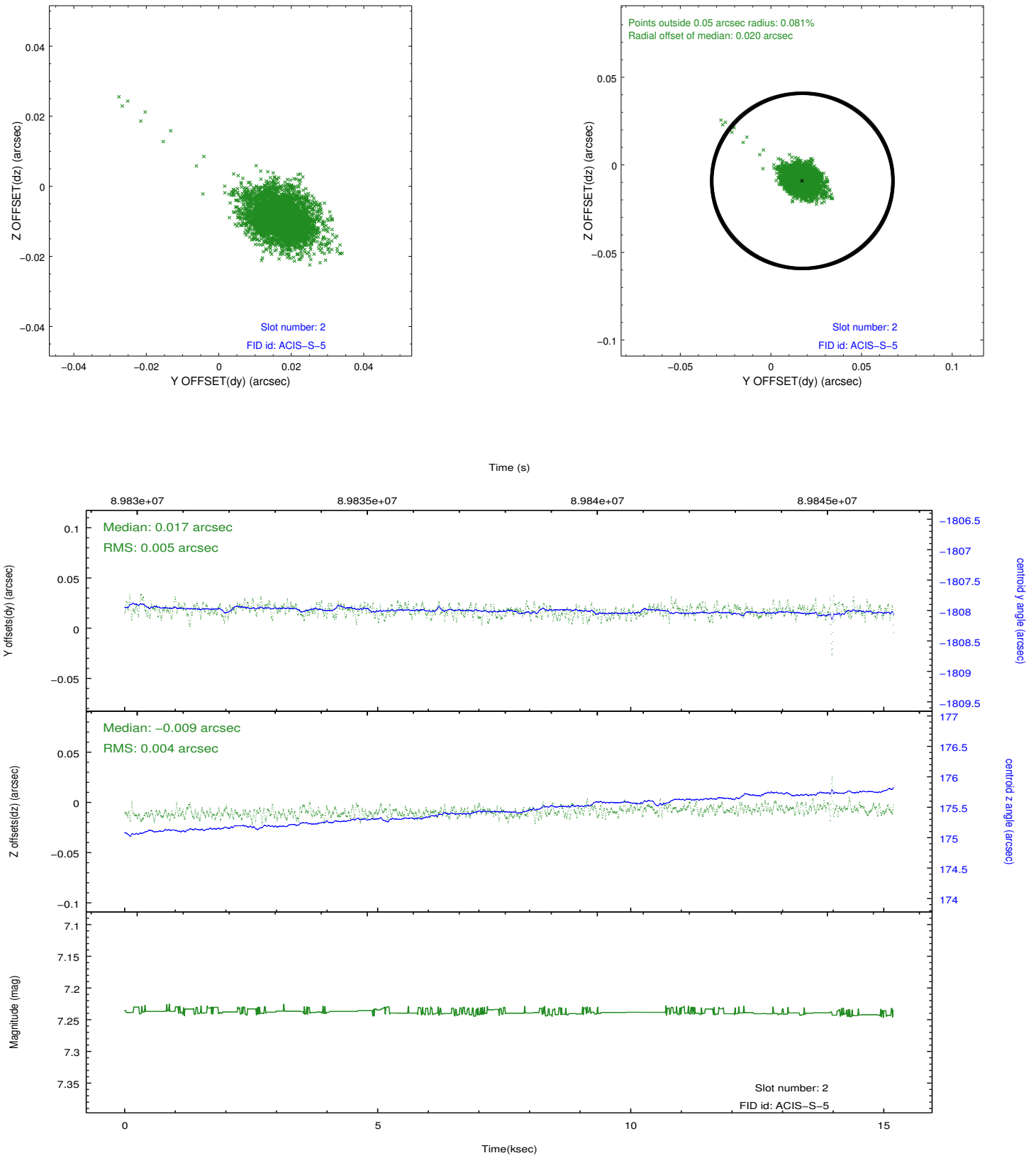
### 2.5.1 Slot 0



## 2.5.2 Slot 1



### 2.5.3 Slot 2



## A Summary

### A.1 Status

V&V Scientist	Jen Lauer
V&V Date (YYYY-MM-DD)	2012.09.10
V&V Edition	1
V&V Disposition and Status	OK
V&V Charge Time	14.784

### A.2 Comments

Charge time for this ObsId remains at previous value of 14.784 ks although with the current processing the charge time would have been 14.95 ksec.