

# V&V Reference Report

## L2 ASCDS Version : 7.6.10

Observation 2045 - L2 Version 001  
Chandra X-Ray Center

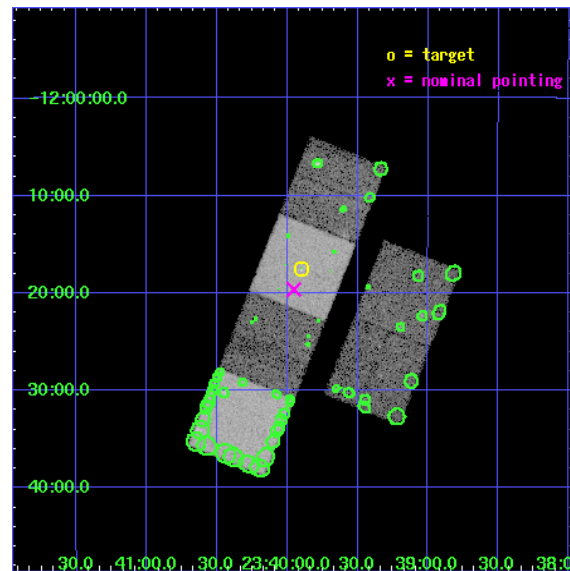
L2 Processing Date : Jan 18 2007

## Contents

<b>1</b>	<b>Front</b>	<b>2</b>
<b>2</b>	<b>OBI</b>	<b>3</b>
2.1	OBI . . . . .	3
2.1.1	Images . . . . .	3
2.1.2	Bias . . . . .	3
2.1.3	Parameters . . . . .	4
2.1.4	Events . . . . .	4
2.2	Compared Parameters . . . . .	5
2.3	Aspect . . . . .	6
2.4	Star Slots . . . . .	9
2.4.1	Slot 3 . . . . .	9
2.4.2	Slot 4 . . . . .	10
2.4.3	Slot 5 . . . . .	11
2.4.4	Slot 6 . . . . .	12
2.4.5	Slot 7 . . . . .	13
2.5	FID Slots . . . . .	14
2.5.1	Slot 0 . . . . .	14
2.5.2	Slot 1 . . . . .	15
2.5.3	Slot 2 . . . . .	16
<b>3</b>	<b>Point Sources</b>	<b>17</b>
<b>A</b>	<b>Summary</b>	<b>18</b>
A.1	Status . . . . .	18
A.2	Comments . . . . .	18

# 1 Front

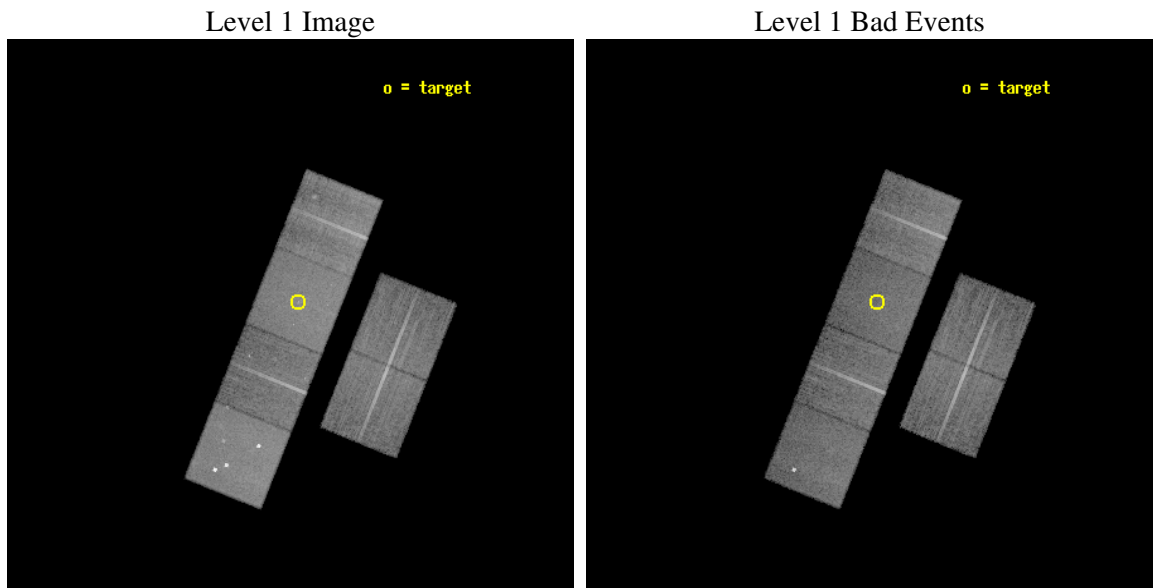
seq_num	600179
obs_id	2045
title	THE EVOLUTION OF GAS EJECTION FROM MERGING GALAXIES
observer	Dr. Andrew Read
object	ARP 222
dtcycle	0
cycle	P
ra_targ	354.975833
dec_targ	-12.291944
ra_nom	354.98835985544
dec_nom	-12.327346511431
roll_nom	291.81994179869
revision	2
ontime	19254.400017932
livetime	19010.589211297
ontime2	19254.400017932
ontime3	19254.400017932
ontime5	19254.400017932
ontime6	19251.15902777
ontime7	19254.400017932
ontime8	19251.159057677
l2events	196277



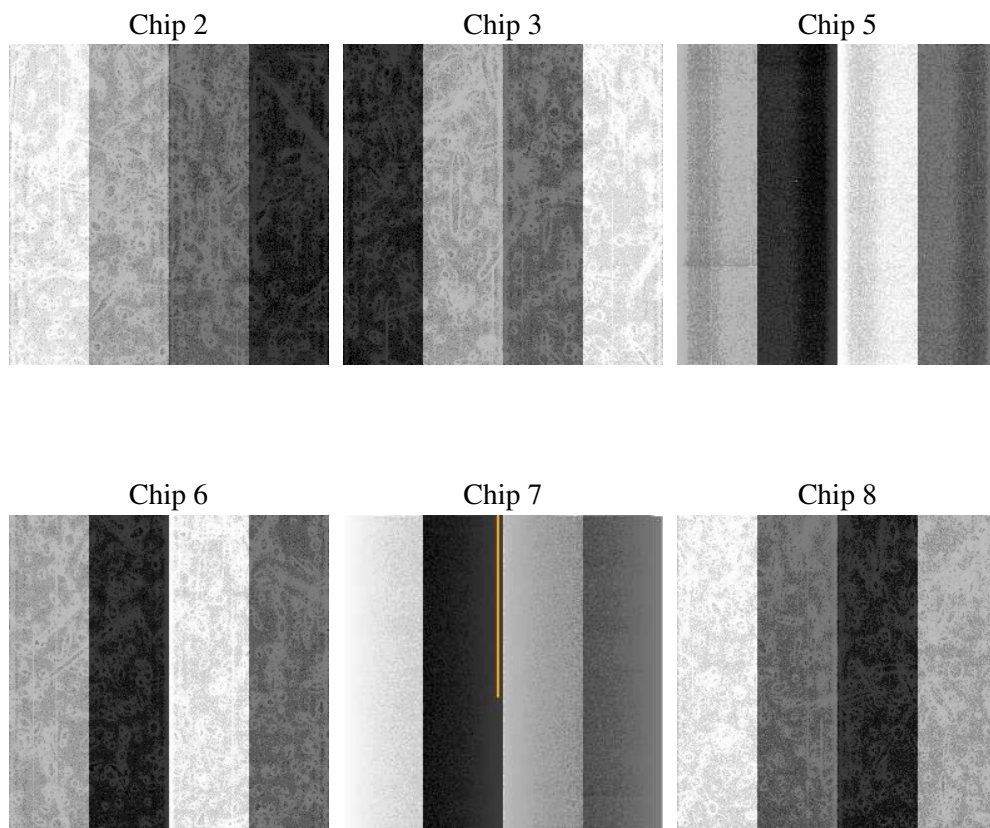
## 2 OBI

### 2.1 OBI

#### 2.1.1 Images



#### 2.1.2 Bias



### 2.1.3 Parameters

obi_num	1
ascdsver	7.6.10
caldsver	3.3.0
date	2007-01-18T05:30:00
revision	2

sched_exp_time	19500.000000
ontime	19254.400017932
ontime2	19254.400017932
ontime3	19254.400017932
ontime5	19254.400017932
ontime6	19251.15902777
ontime7	19254.400017932
ontime8	19251.159057677
l1events	882954

### 2.1.4 Events

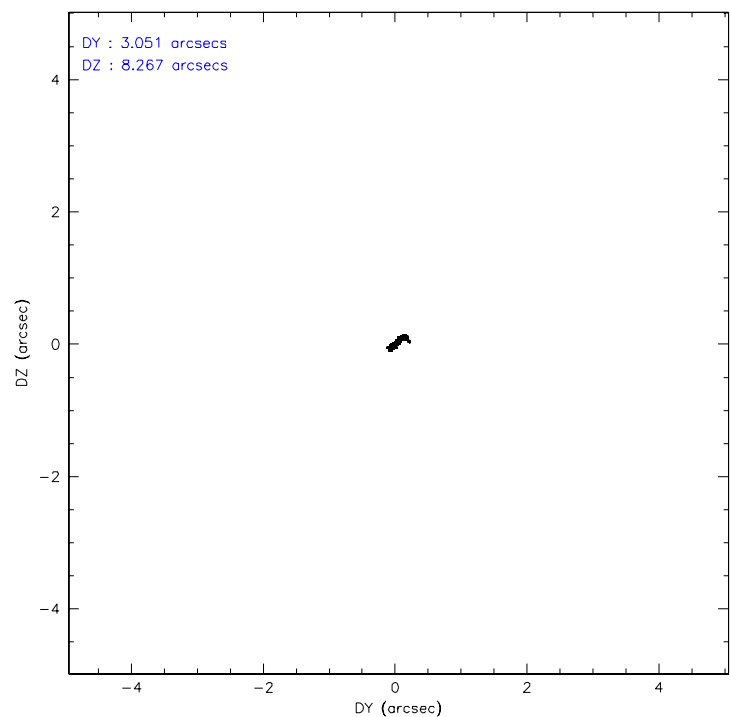
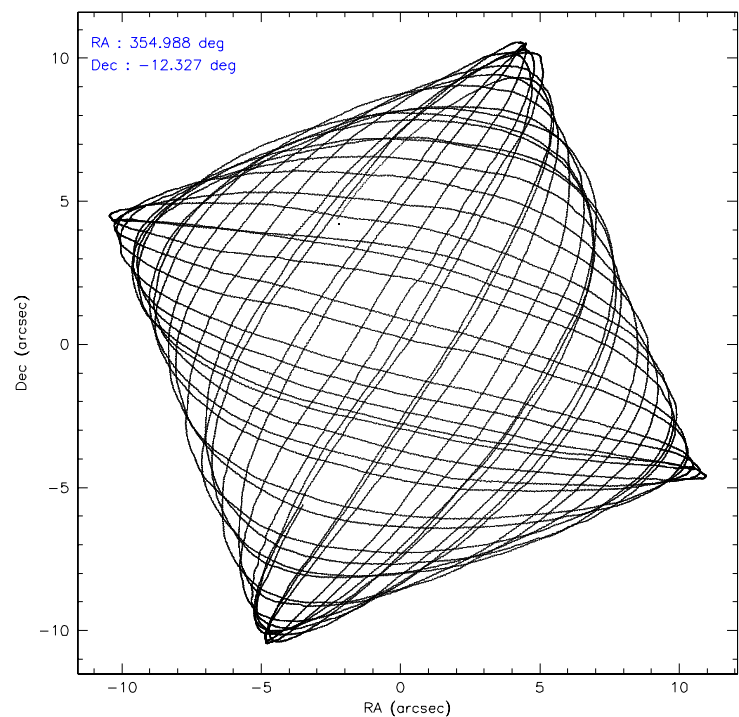
	ccd 2	ccd 3	ccd 5	ccd 6	ccd 7	ccd 8
level 1 events	125926	119532	189266	123379	162087	162764
rejected events	111624	105166	98302	108238	93813	125245
rejected %	88%	87%	51%	87%	57%	76%

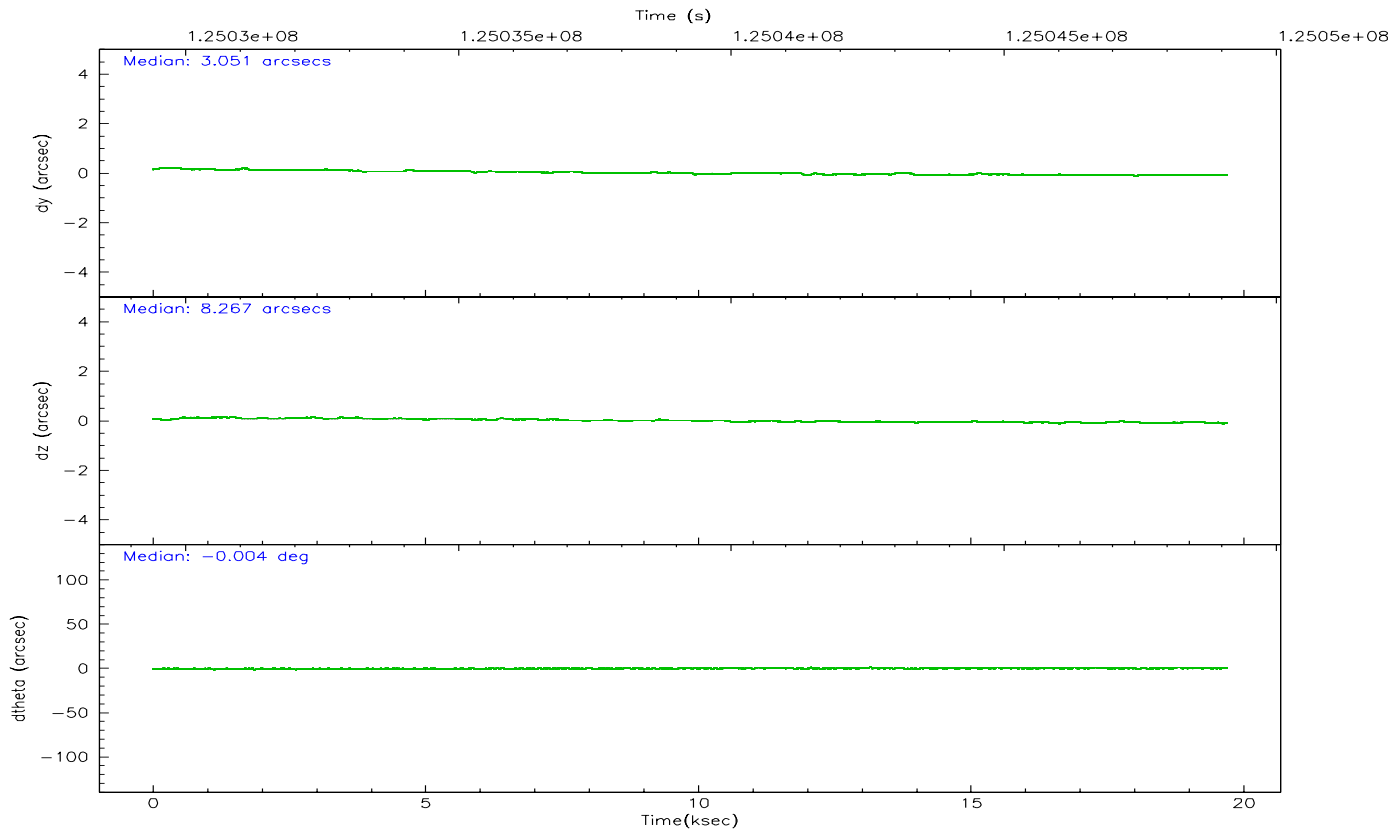
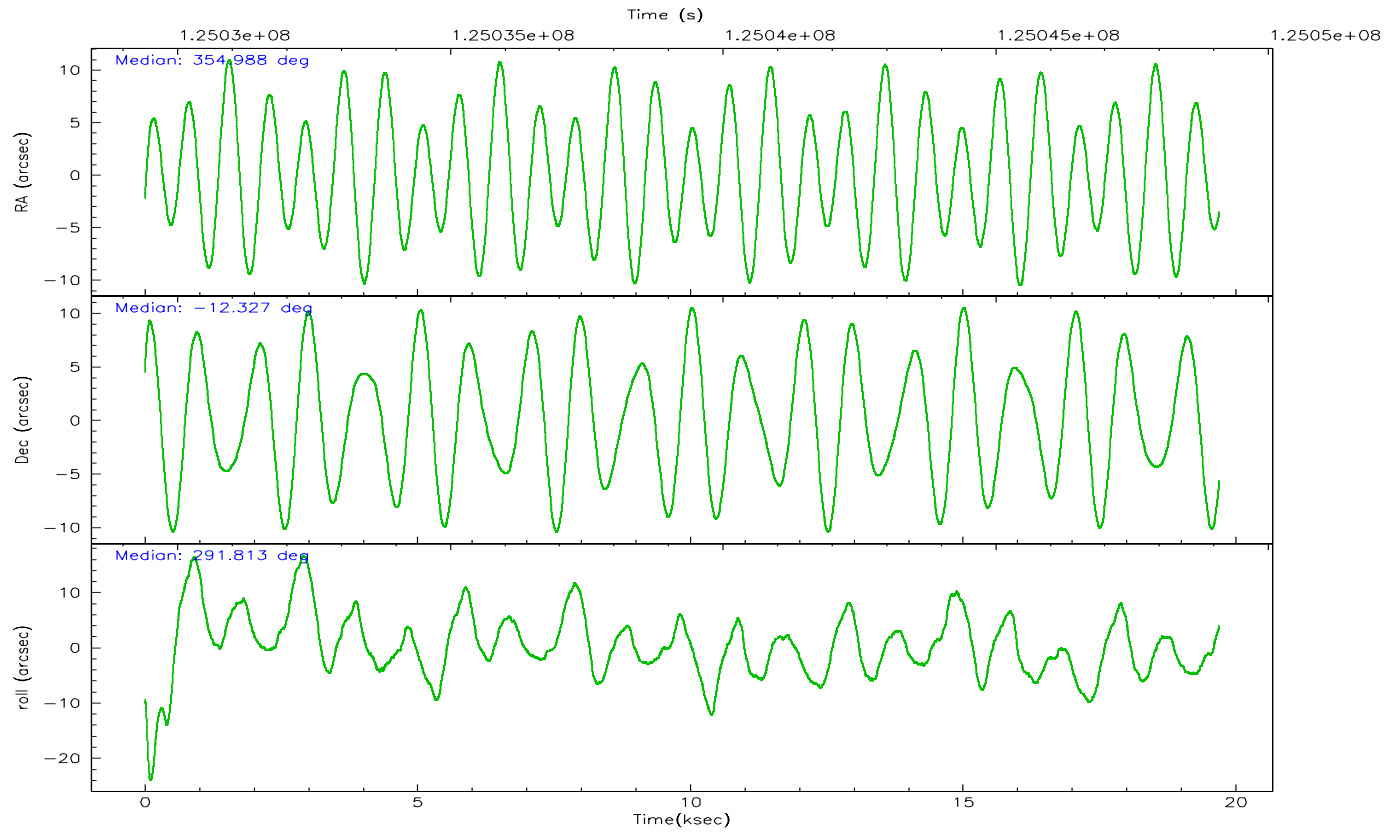
	ccd 2	ccd 3	ccd 5	ccd 6	ccd 7	ccd 8
grade 0 events	6007	6118	16650	6284	6806	12702
	4%	5%	8%	5%	4%	7%
grade 1 events	59	54	2722	73	148	134
	0%	0%	1%	0%	0%	0%
grade 2 events	3110	2912	24748	3105	13437	7131
	2%	2%	13%	2%	8%	4%
grade 3 events	1270	1329	3637	1399	6112	4735
	1%	1%	1%	1%	3%	2%
grade 4 events	1358	1367	3487	1413	6107	4401
	1%	1%	1%	1%	3%	2%
grade 5 events	4260	4772	13573	5319	15459	6754
	3%	3%	7%	4%	9%	4%
grade 6 events	2561	2642	42468	2944	35836	8554
	2%	2%	22%	2%	22%	5%
grade 7 events	107301	100338	81981	102842	78182	118353
	85%	83%	43%	83%	48%	72%

## 2.2 Compared Parameters

Parameter	Planned	Actual	Parameter	Planned	Actual
Instrument	ACIS	ACIS	Obspar format version number	6	6
Detector	ACIS-235678	ACIS-235678	Obspar file type	PREDICTED	ACTUAL
Grating	NONE	NONE	Obspar update status	NONE	UPDATED
Data mode	FAINT	FAINT	Number of optional ACIS chips dropped	0	0
Observation mode	POINTING	POINTING	On-chip summing requested	N	N
Pointing RA	354.966215	354.9883598554416	Subarray requested	NONE	NONE
Pointing Dec	-12.310739	-12.32734651143133	Alternating exposures requested	N	N
Pointing Roll	291.658581	291.8199417986876	Primary exposure time	0.000000	3.2
SIM focus pos (mm)	-0.684267	-0.6828225247311905			
SIM defocus (mm)	0	0.001444936568705701			
SIM translation stage pos (mm)	-190.132523	-190.1400660498719			
SIM translation stage offset (mm)	0	0.00754346686406393			
Observation start time	125029592.184000	125028845.90115			
Observation start date	2001-12-18T02:25:28	2001-12-18T02:14:05			
Observation end time	125049092.184000	125049933.22699			
Observation end date	2001-12-18T07:50:28	2001-12-18T08:05:33			
Read mode	TIMED	TIMED			

## 2.3 Aspect





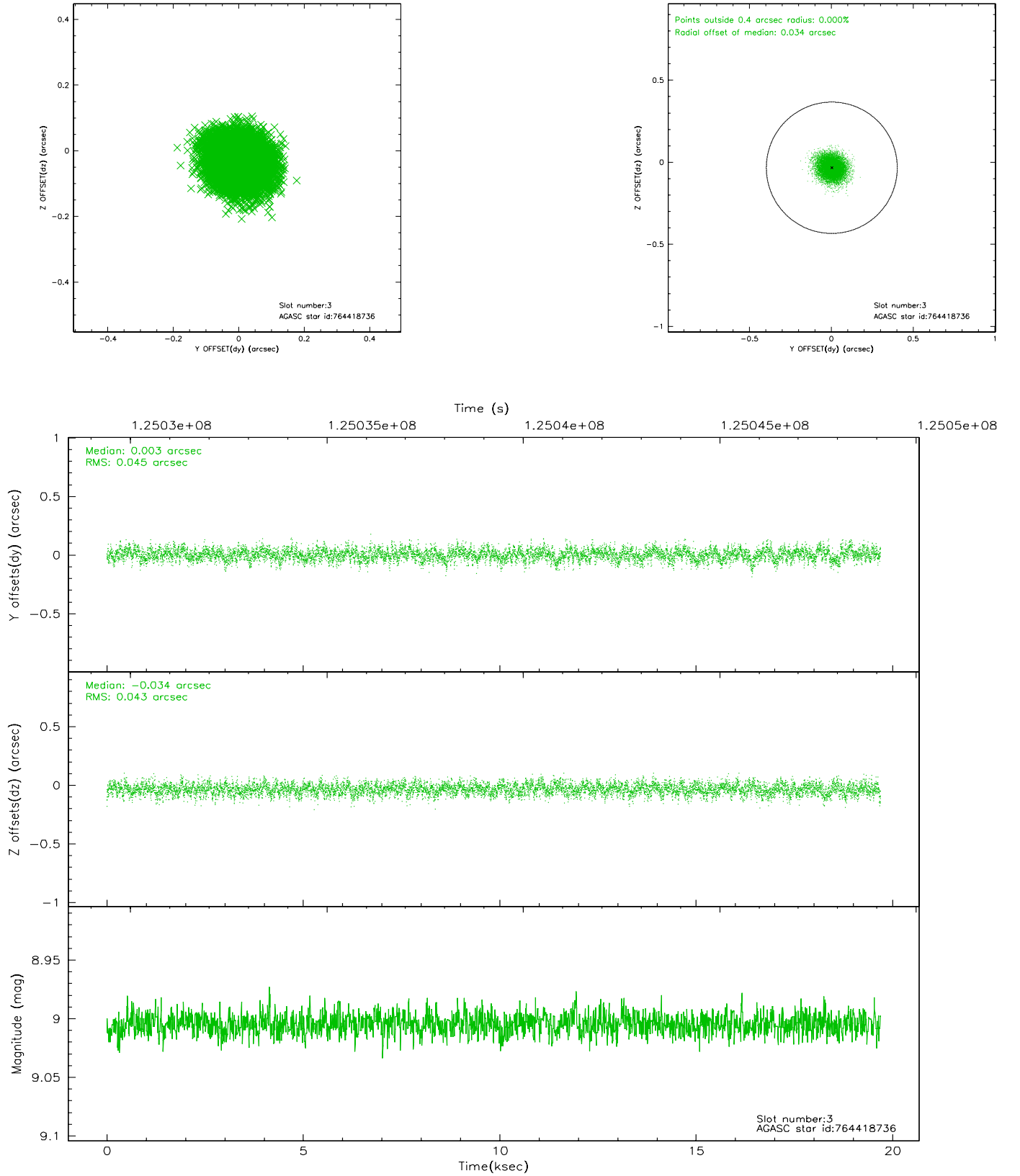
### Slot Statistics

slot	status	id	mag	n_pts	med_dy	med_dz	dr1	dr2	ra	dec	mean_y	mean_z
0	FID	ACIS-S-2	7.11	4804	0.005	0.017	0.007	0.011	0.000000	0.000000	-755.72	-1729.46
1	FID	ACIS-S-4	7.20	4804	-0.075	-0.007	0.007	0.012	0.000000	0.000000	2157.40	178.79
2	FID	ACIS-S-5	7.24	4803	0.038	-0.001	0.007	0.012	0.000000	0.000000	-1808.27	172.71
3	GUIDE	764418736	9.00	9603	0.003	-0.034	0.067	0.108	354.892618	-11.952941	-1293.42	233.94
4	GUIDE	764416688	9.47	9603	-0.090	-0.195	0.088	0.142	354.421563	-12.201872	-1070.38	-1637.82
5	GUIDE	764939704	9.67	9585	0.230	-0.051	0.135	0.215	355.122802	-12.949378	2339.28	-338.46
6	GUIDE	764546592	9.80	9603	0.076	0.113	0.093	0.153	355.367033	-11.958616	-656.69	1779.04
7	GUIDE	764544264	10.12	9584	-0.214	0.159	0.170	0.281	355.363349	-11.465365	-2311.58	2425.14

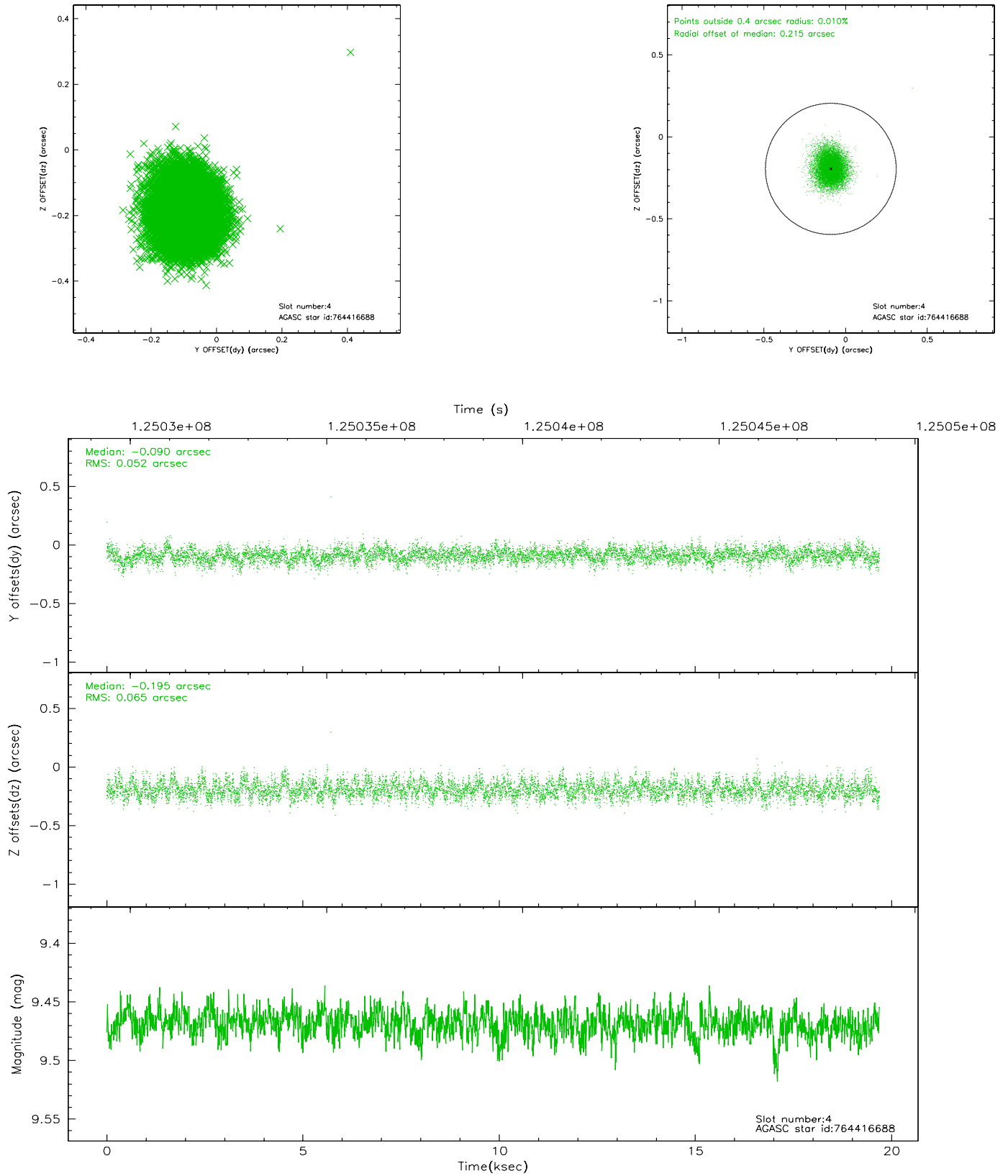


## 2.4 Star Slots

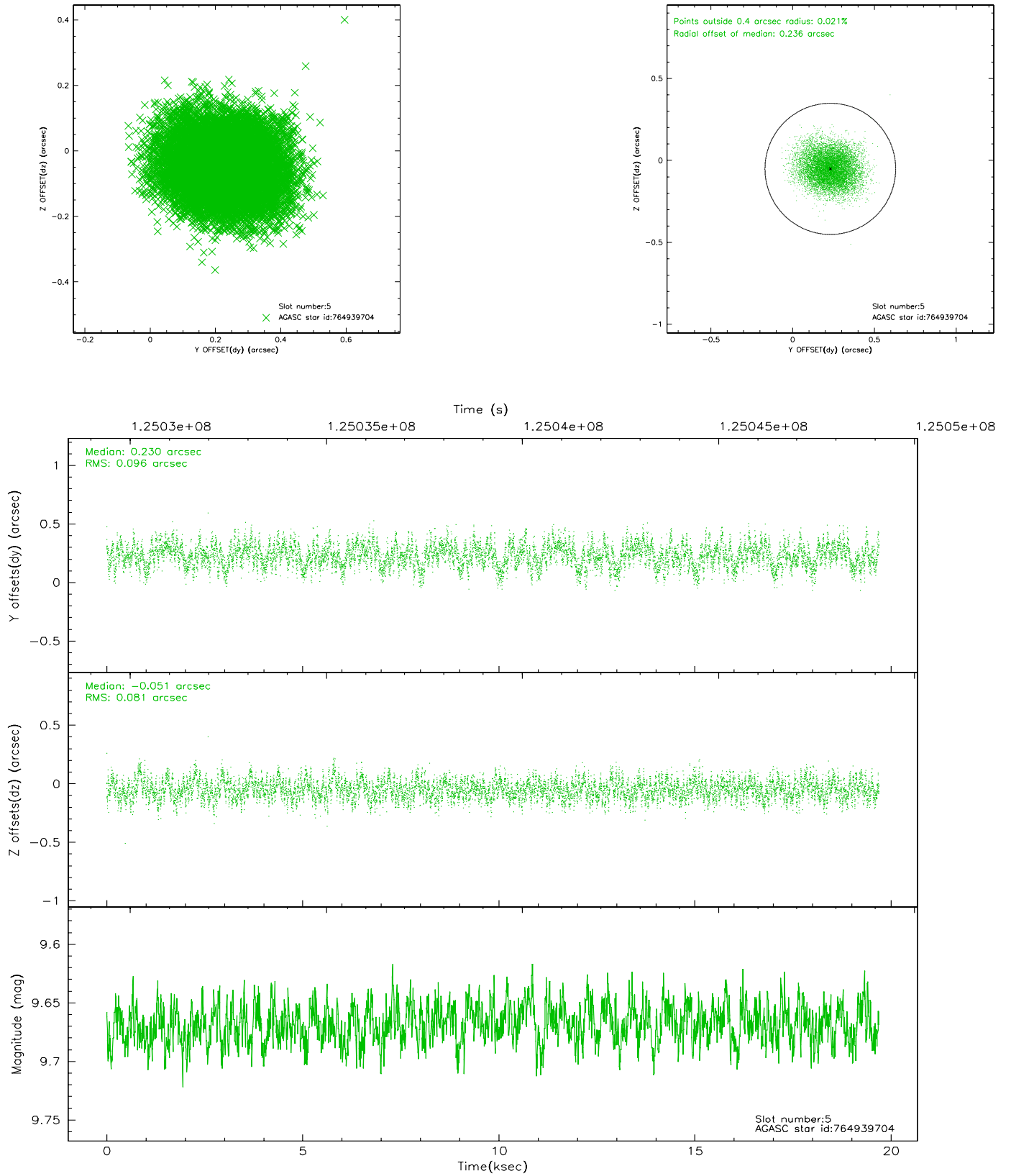
### 2.4.1 Slot 3



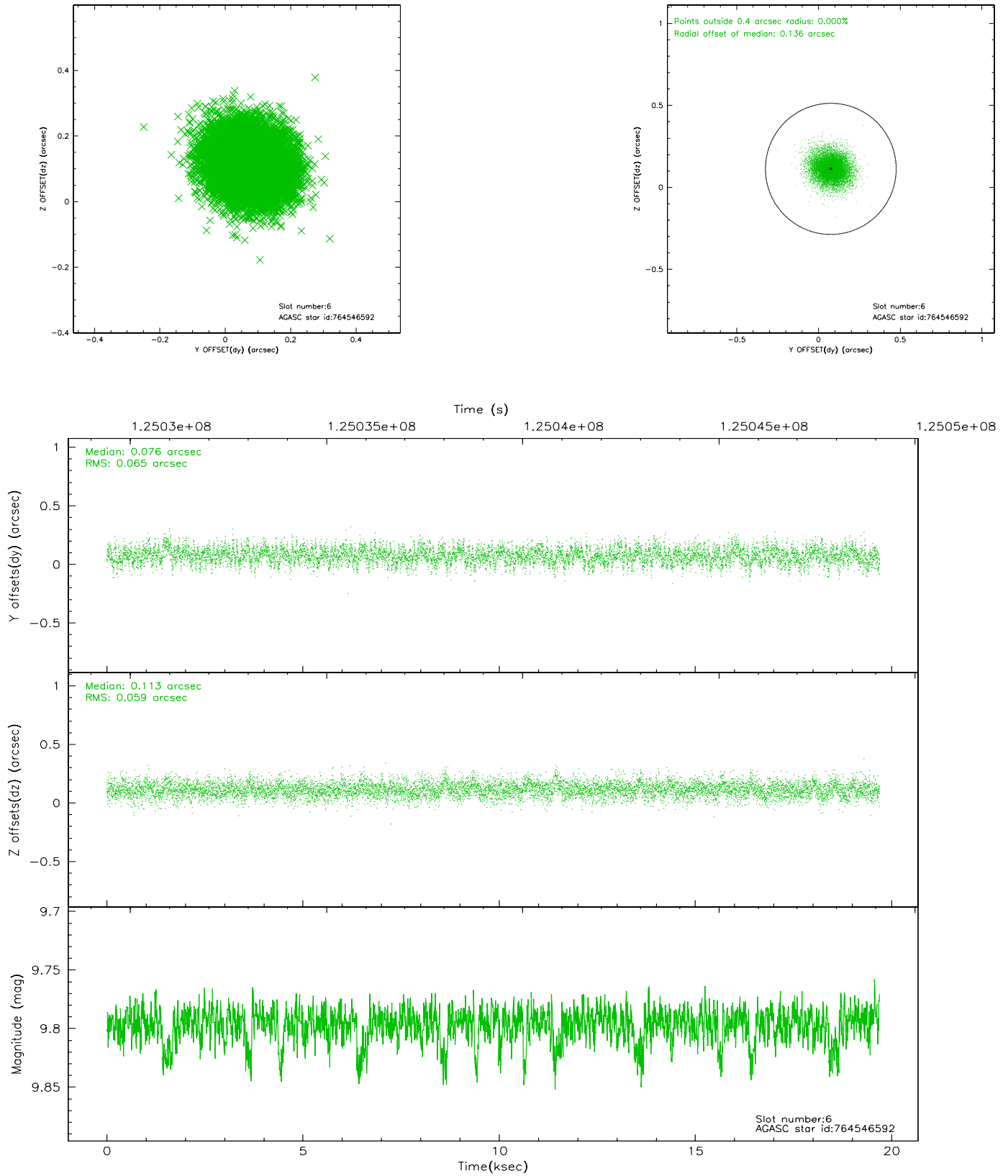
## 2.4.2 Slot 4



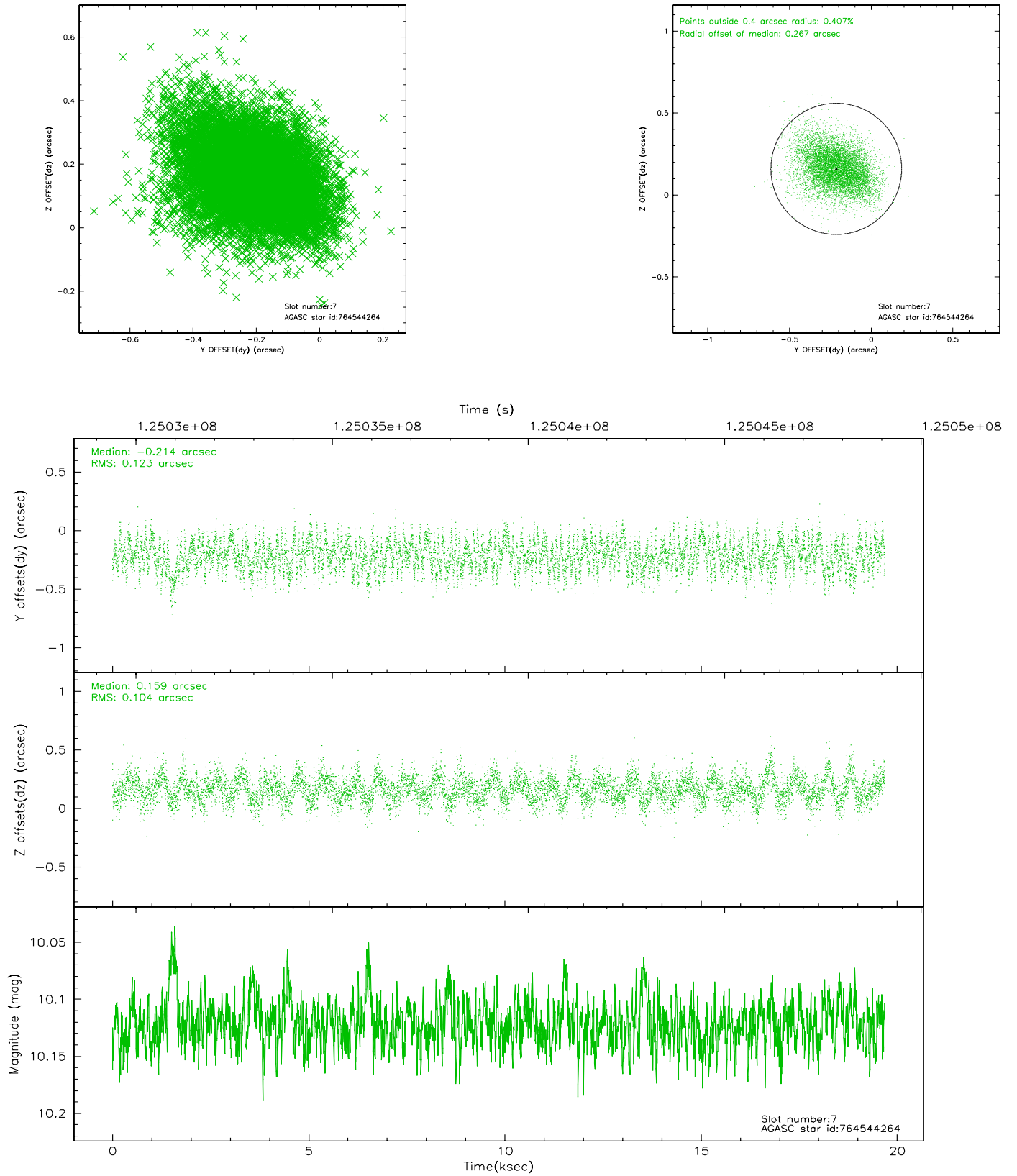
### 2.4.3 Slot 5



## 2.4.4 Slot 6

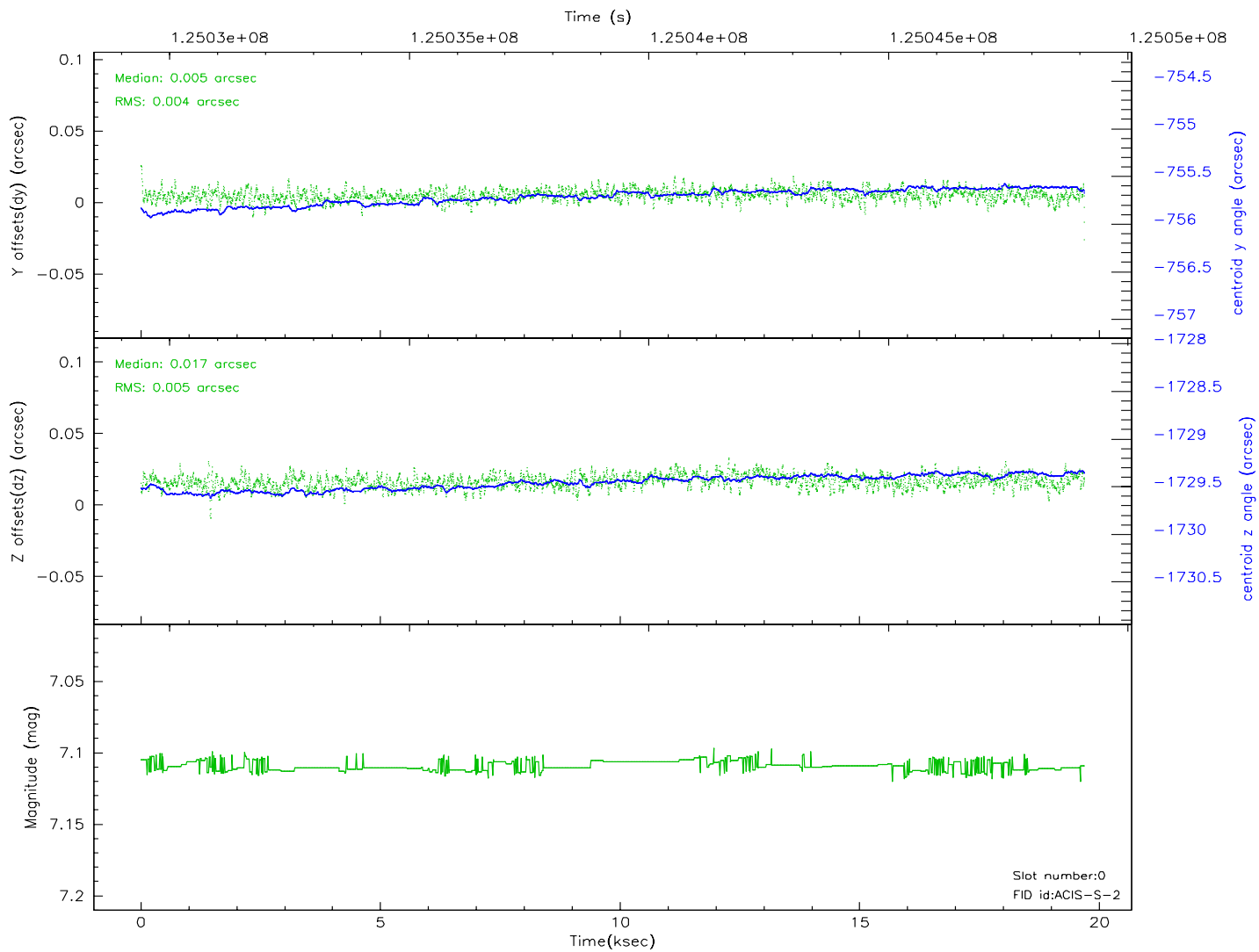
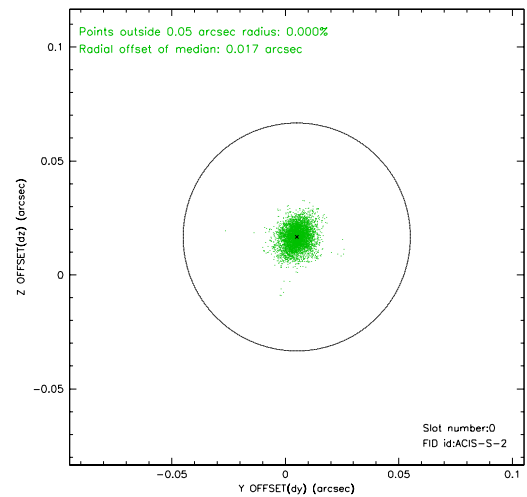
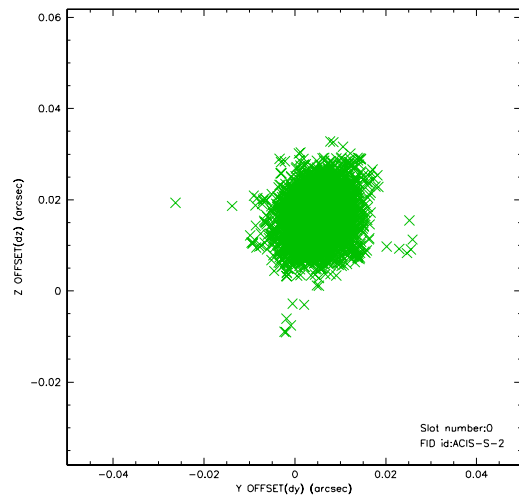


## 2.4.5 Slot 7

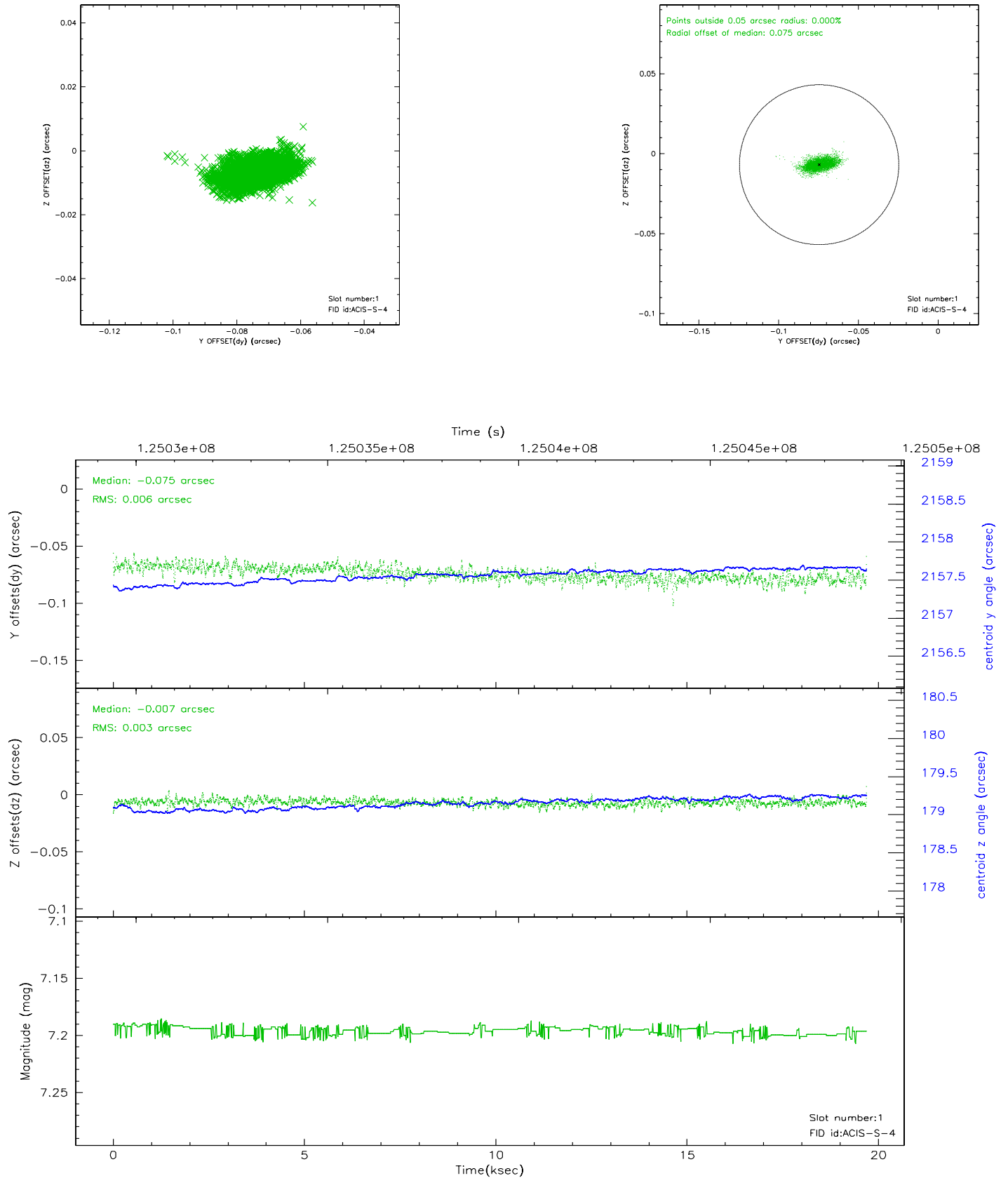


## 2.5 FID Slots

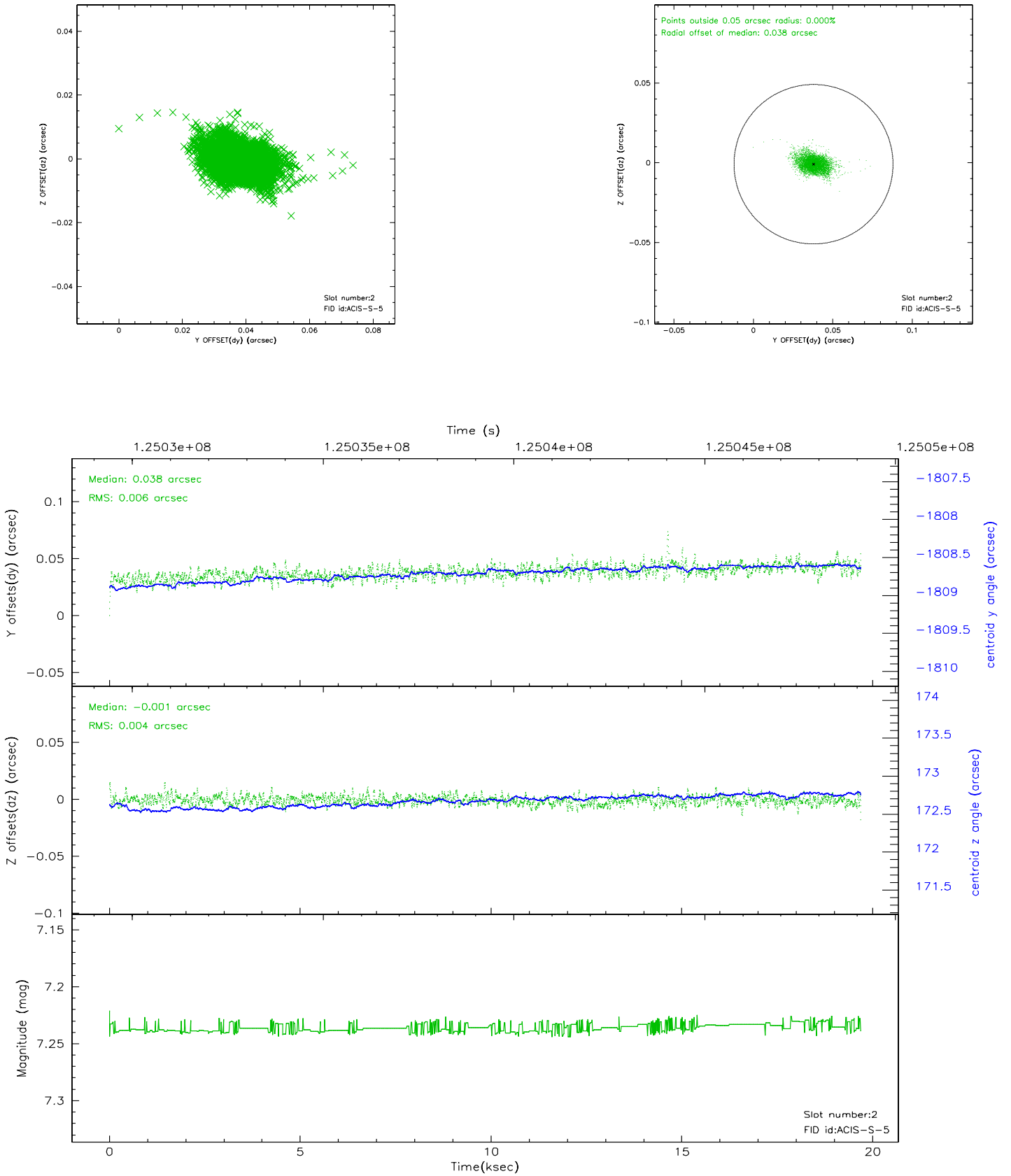
### 2.5.1 Slot 0



## 2.5.2 Slot 1

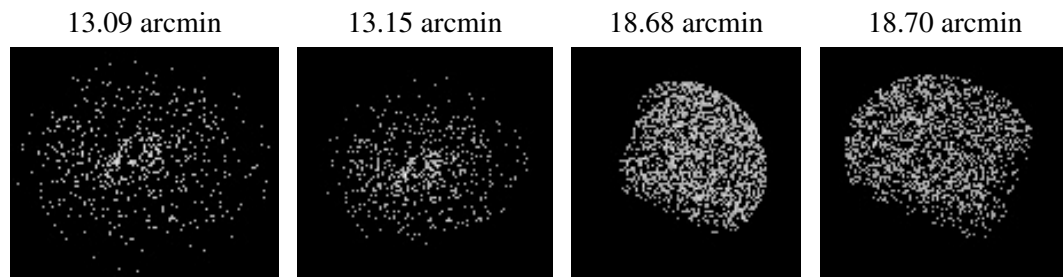


### 2.5.3 Slot 2





### 3 Point Sources



## A Summary

### A.1 Status

V&V Scientist	Beth Sundheim
V&V Date (YYYY-MM-DD)	2007.01.18
V&V Edition	1
V&V Disposition and Status	OK
V&V Charge Time	19.257

### A.2 Comments