

# V&V Reference Report

## L2 ASCDS Version : 7.6.9

Observation 2038 - L2 Version 001  
Chandra X-Ray Center

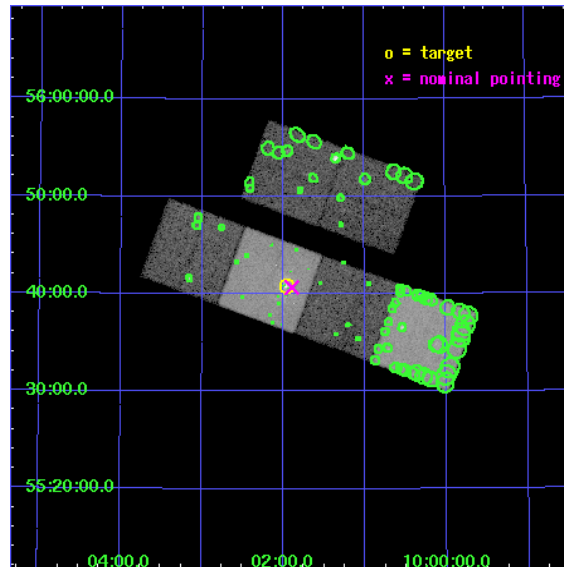
L2 Processing Date : Nov 7 2006

## Contents

<b>1</b>	<b>Front</b>	<b>2</b>
<b>2</b>	<b>OBI</b>	<b>3</b>
2.1	OBI . . . . .	3
2.1.1	Images . . . . .	3
2.1.2	Bias . . . . .	3
2.1.3	Parameters . . . . .	4
2.1.4	Events . . . . .	4
2.2	Compared Parameters . . . . .	5
2.3	Aspect . . . . .	6
2.4	Star Slots . . . . .	9
2.4.1	Slot 3 . . . . .	9
2.4.2	Slot 4 . . . . .	10
2.4.3	Slot 5 . . . . .	11
2.4.4	Slot 6 . . . . .	12
2.4.5	Slot 7 . . . . .	13
2.5	FID Slots . . . . .	14
2.5.1	Slot 0 . . . . .	14
2.5.2	Slot 1 . . . . .	15
2.5.3	Slot 2 . . . . .	16
<b>3</b>	<b>Point Sources</b>	<b>17</b>
<b>A</b>	<b>Summary</b>	<b>18</b>
A.1	Status . . . . .	18
A.2	Comments . . . . .	18

# 1 Front

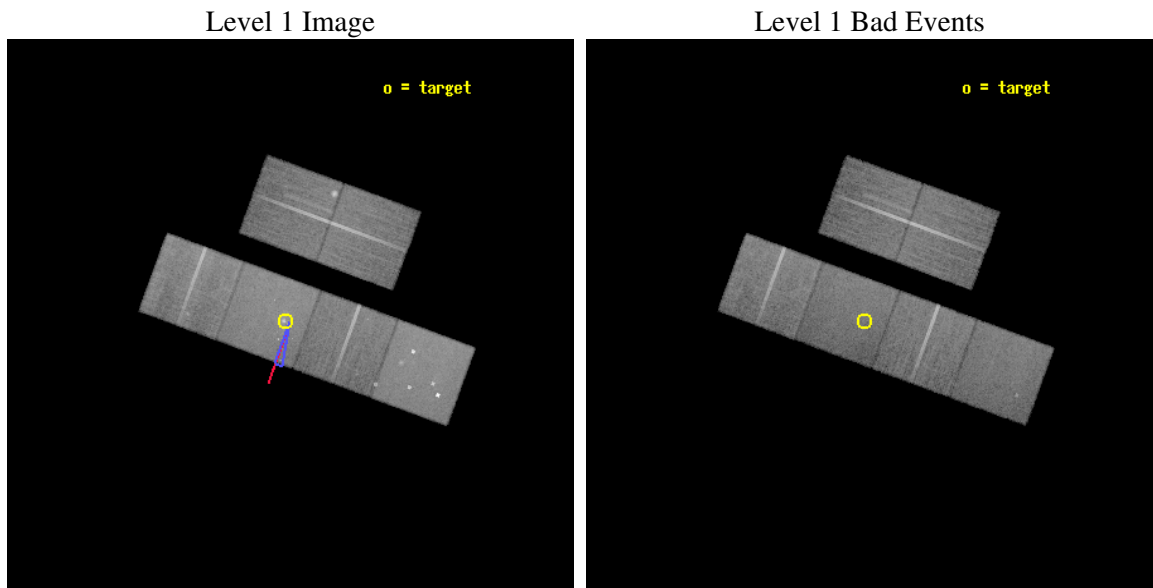
seq_num	600172
obs_id	2038
title	STARBURST-NUCLEUS OUTFLOW CONES: UNDERSTANDING THE ORIGIN OF X-RAY EMISSION IN GALACTIC SUPERWINDS
observer	Dr David Strickland
object	NGC 3079
dtcycle	0
cycle	P
ra_targ	150.490833
dec_targ	55.67975
ra_nom	150.47369575559
dec_nom	55.678081249949
roll_nom	200.17077240551
revision	2
ontime	26918.40002507
livetime	26577.543035638
ontime2	26918.40002507
ontime3	26918.40002507
ontime5	26918.40002507
ontime6	26915.159064814
ontime7	26918.40002507
ontime8	26918.40002507
l2events	265433



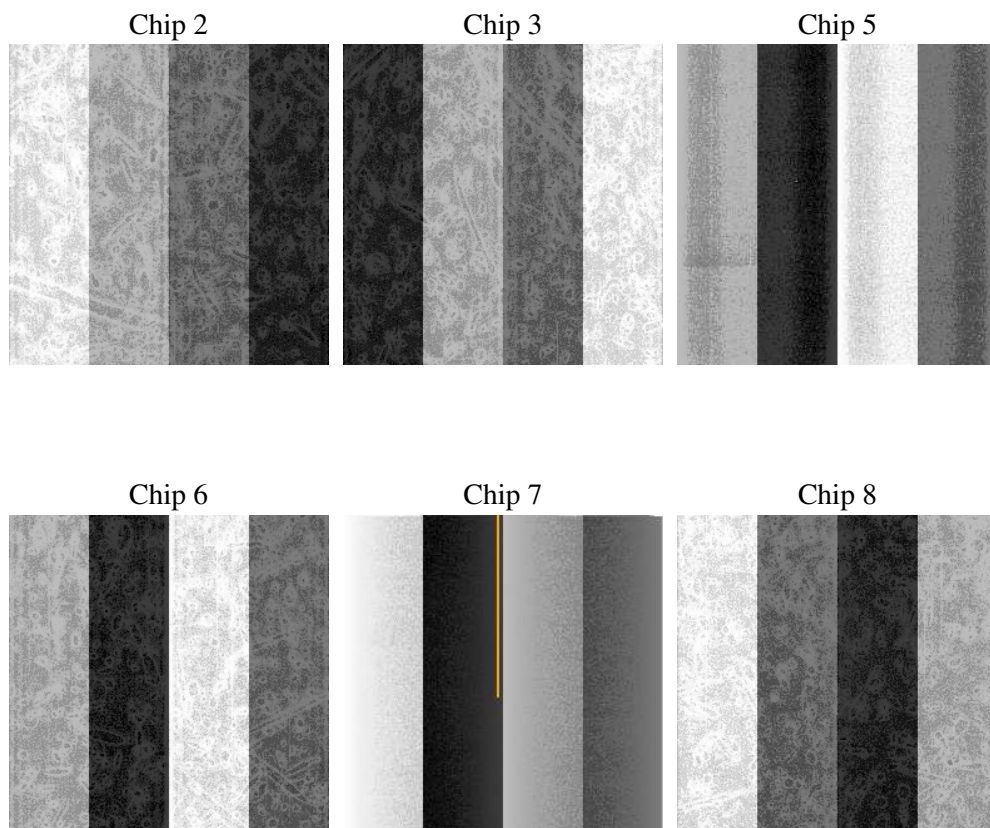
## 2 OBI

### 2.1 OBI

#### 2.1.1 Images



#### 2.1.2 Bias



### 2.1.3 Parameters

obi_num	0
ascdsver	7.6.9
caldsver	3.2.3
date	2006-11-07T22:03:18
revision	2

sched_exp_time	27000.000000
ontime	26922.985480756
ontime2	26922.985480756
ontime3	26922.985480756
ontime5	26922.985500678
ontime6	26919.7445205
ontime7	26922.985480756
ontime8	26922.985480756
l1events	1238147

### 2.1.4 Events

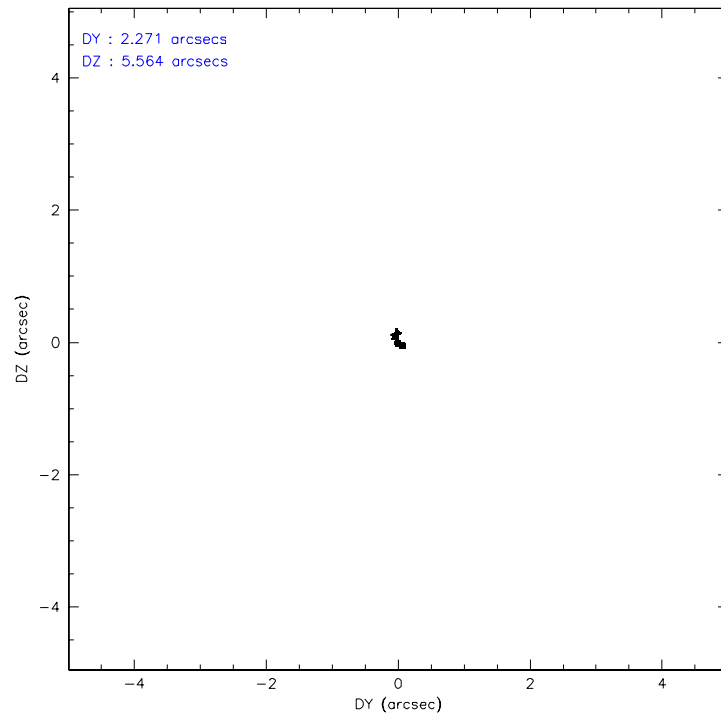
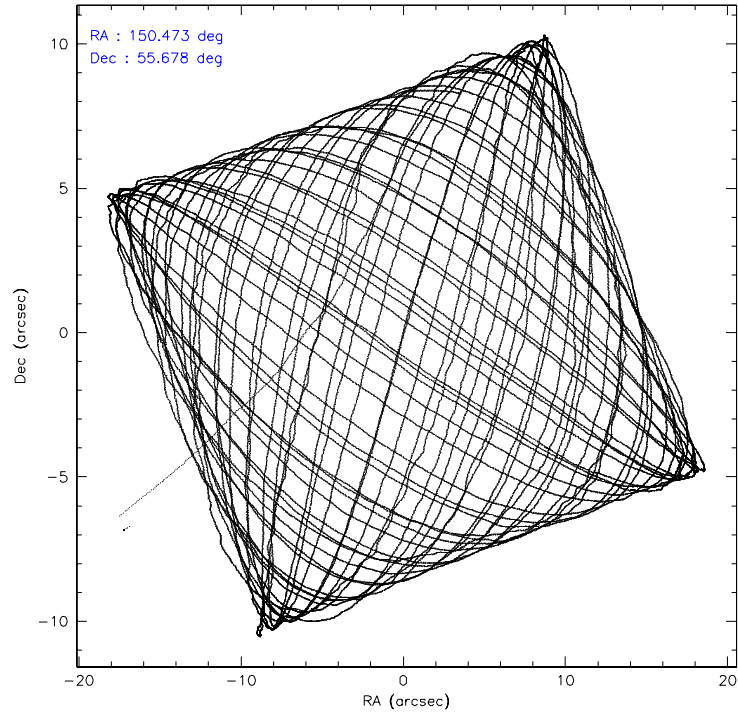
	ccd 2	ccd 3	ccd 5	ccd 6	ccd 7	ccd 8
level 1 events	181824	172653	254612	180681	229684	218693
rejected events	162619	150275	136251	160264	137140	175222
rejected %	89%	87%	53%	88%	59%	80%

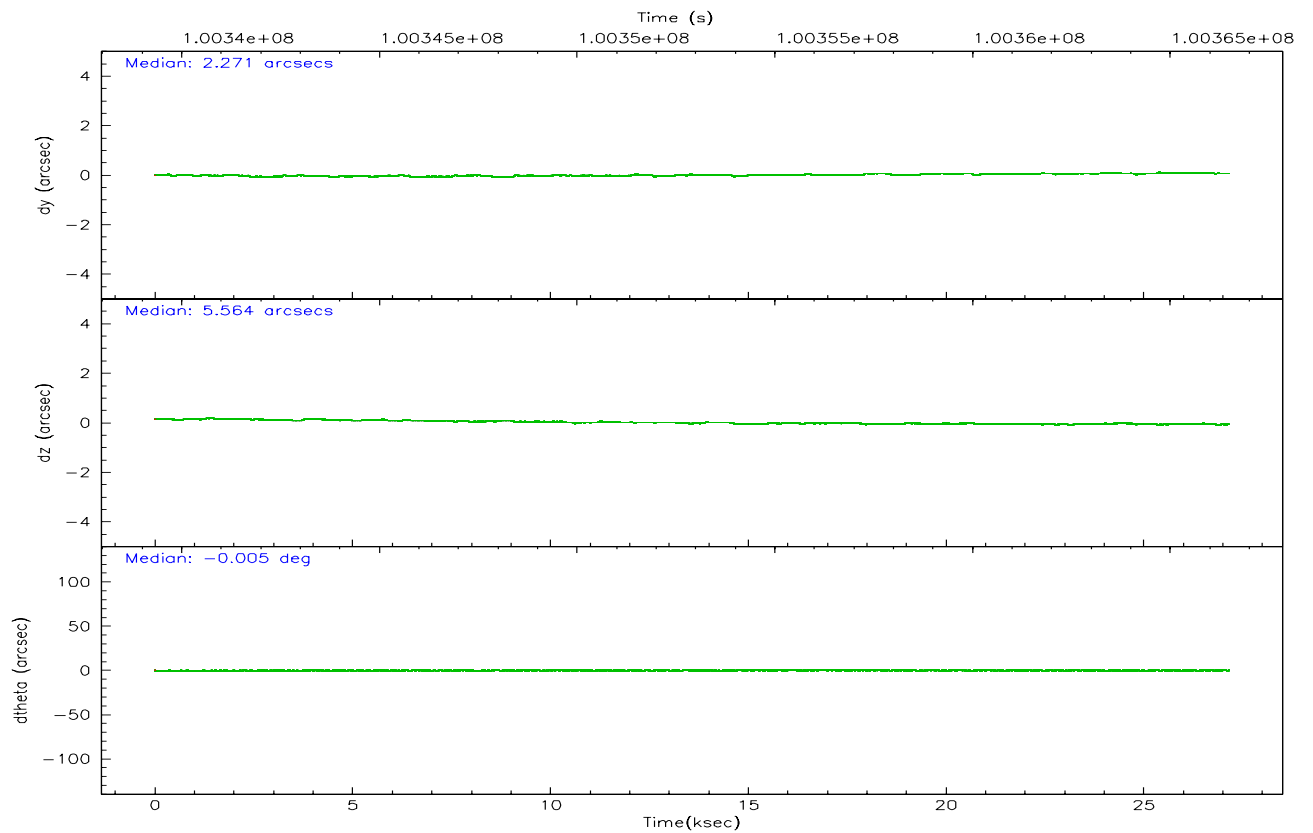
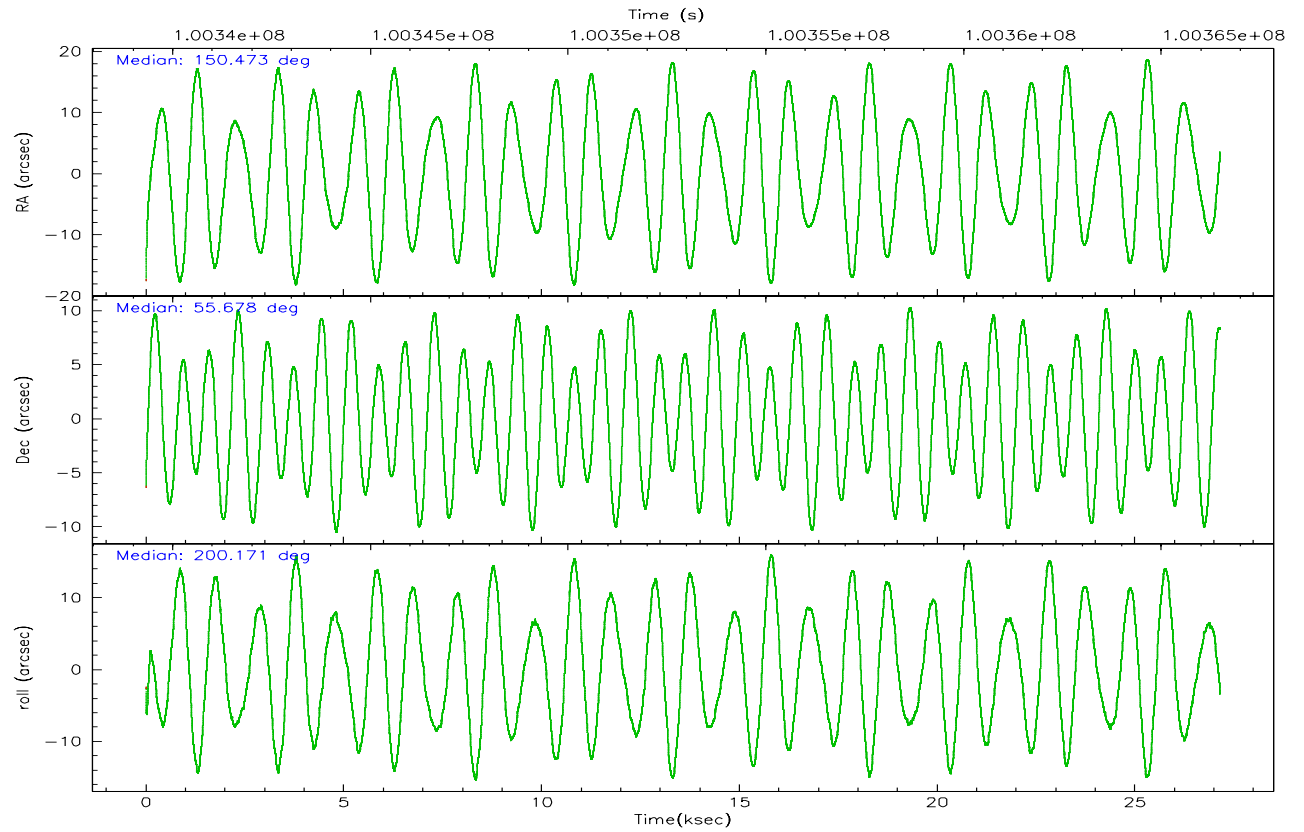
	ccd 2	ccd 3	ccd 5	ccd 6	ccd 7	ccd 8
grade 0 events	7920	11077	15699	8455	7687	13655
	4%	6%	6%	4%	3%	6%
grade 1 events	78	78	593	80	125	137
	0%	0%	0%	0%	0%	0%
grade 2 events	4152	4010	36728	3986	22532	9402
	2%	2%	14%	2%	9%	4%
grade 3 events	1840	2019	2695	1987	5378	4636
	1%	1%	1%	1%	2%	2%
grade 4 events	1863	1929	2625	2070	5280	4358
	1%	1%	1%	1%	2%	1%
grade 5 events	6247	6690	12138	7369	15441	9411
	3%	3%	4%	4%	6%	4%
grade 6 events	3431	3347	60629	3922	51682	11424
	1%	1%	23%	2%	22%	5%
grade 7 events	156293	143503	123505	152812	121559	165670
	85%	83%	48%	84%	52%	75%

## 2.2 Compared Parameters

Parameter	Planned	Actual	Parameter	Planned	Actual
Instrument	ACIS	ACIS	Obspar format version number	6	6
Detector	ACIS-235678	ACIS-235678	Obspar file type	PREDICTED	ACTUAL
Grating	NONE	NONE	Obspar update status	NONE	UPDATED
Data mode	FAINT	FAINT	Number of optional ACIS chips dropped	0	0
Observation mode	POINTING	POINTING	On-chip summing requested	N	N
Pointing RA	150.504392	150.4736957555872	Subarray requested	NONE	NONE
Pointing Dec	55.699209	55.67808124994867	Alternating exposures requested	N	N
Pointing Roll	199.988805	200.1707724055145	Primary exposure time	0.000000	3.2
Roll angle	195.000000	195.000000			
Roll tolerance	5.000000	5.000000			
Roll constraint allows 180D rotation	N	N			
SIM focus pos (mm)	-0.684267	-0.6828225247311905			
SIM defocus (mm)	0	0.001444936568705701			
SIM translation stage pos (mm)	-190.132523	-190.1400660498719			
SIM translation stage offset (mm)	0	0.00754346686406393			
Observation start time	100339486.184000	100338519.36853			
Observation start date	2001-03-07T08:03:42	2001-03-07T07:48:39			
Observation end time	100366486.184000	100367296.75714			
Observation end date	2001-03-07T15:33:42	2001-03-07T15:48:16			
Read mode	TIMED	TIMED			

## 2.3 Aspect





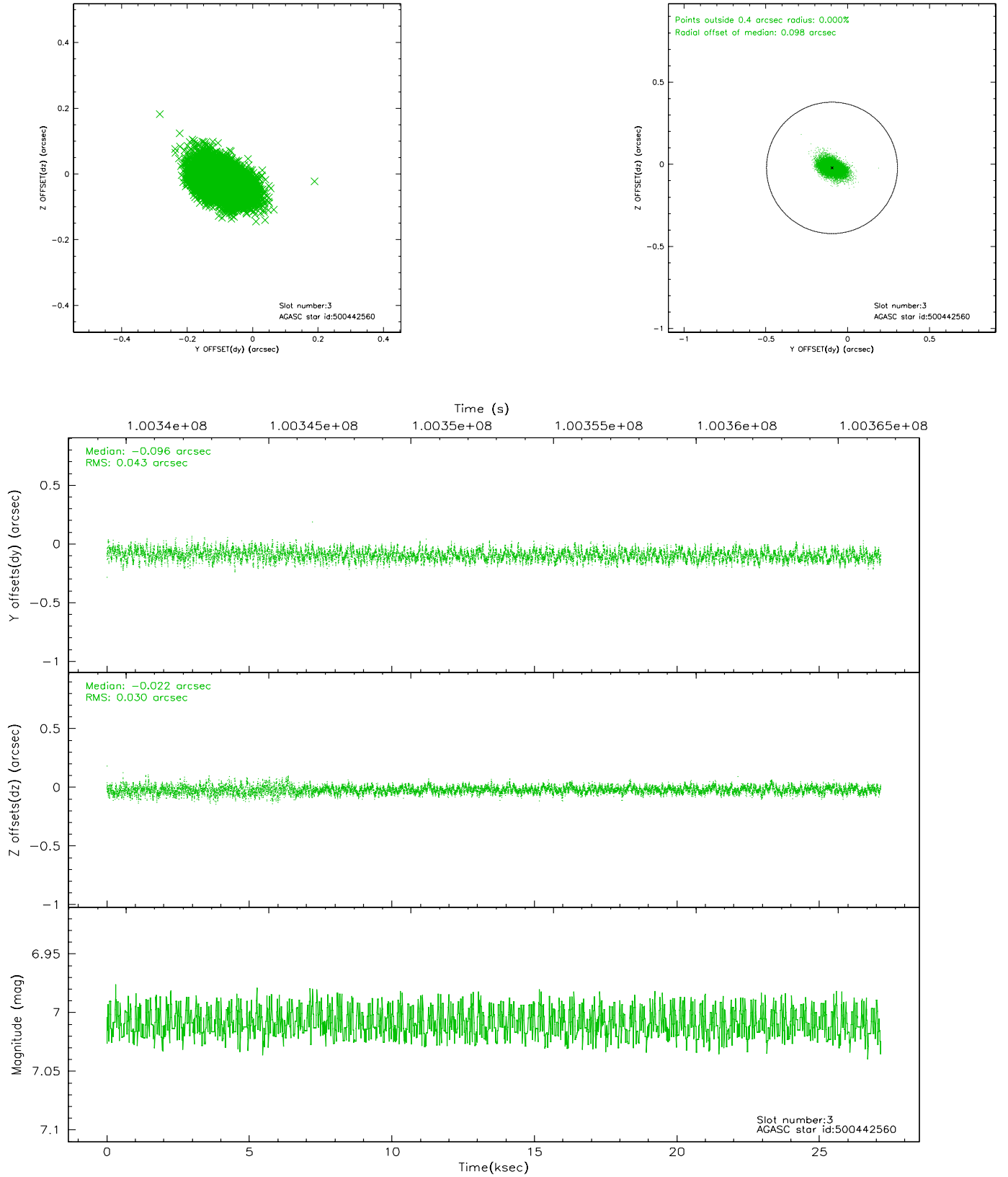
### Slot Statistics

slot	status	id	mag	n_pts	med_dy	med_dz	dr1	dr2	ra	dec	mean_y	mean_z
0	FID	ACIS-S-2	7.11	6622	-0.028	0.022	0.007	0.012	0.000000	0.000000	-754.88	-1726.71
1	FID	ACIS-S-4	7.20	6622	-0.067	0.008	0.006	0.011	0.000000	0.000000	2158.26	181.73
2	FID	ACIS-S-5	7.24	6624	0.064	-0.021	0.007	0.012	0.000000	0.000000	-1807.55	175.39
3	GUIDE	500442560	7.01	13248	-0.096	-0.022	0.055	0.092	151.619747	55.769496	-2216.66	516.63
4	GUIDE	500309776	7.94	13244	-0.007	-0.133	0.051	0.088	150.409238	55.585087	321.22	319.54
5	GUIDE	500311288	8.58	13241	0.050	0.040	0.074	0.120	149.915988	55.168561	1787.04	1376.39
6	GUIDE	500310136	8.67	13246	0.101	0.085	0.062	0.105	149.694298	55.069248	2340.13	1550.97
7	GUIDE	500437816	8.67	13246	-0.049	0.028	0.060	0.100	151.181905	56.134575	-1816.48	-1015.00

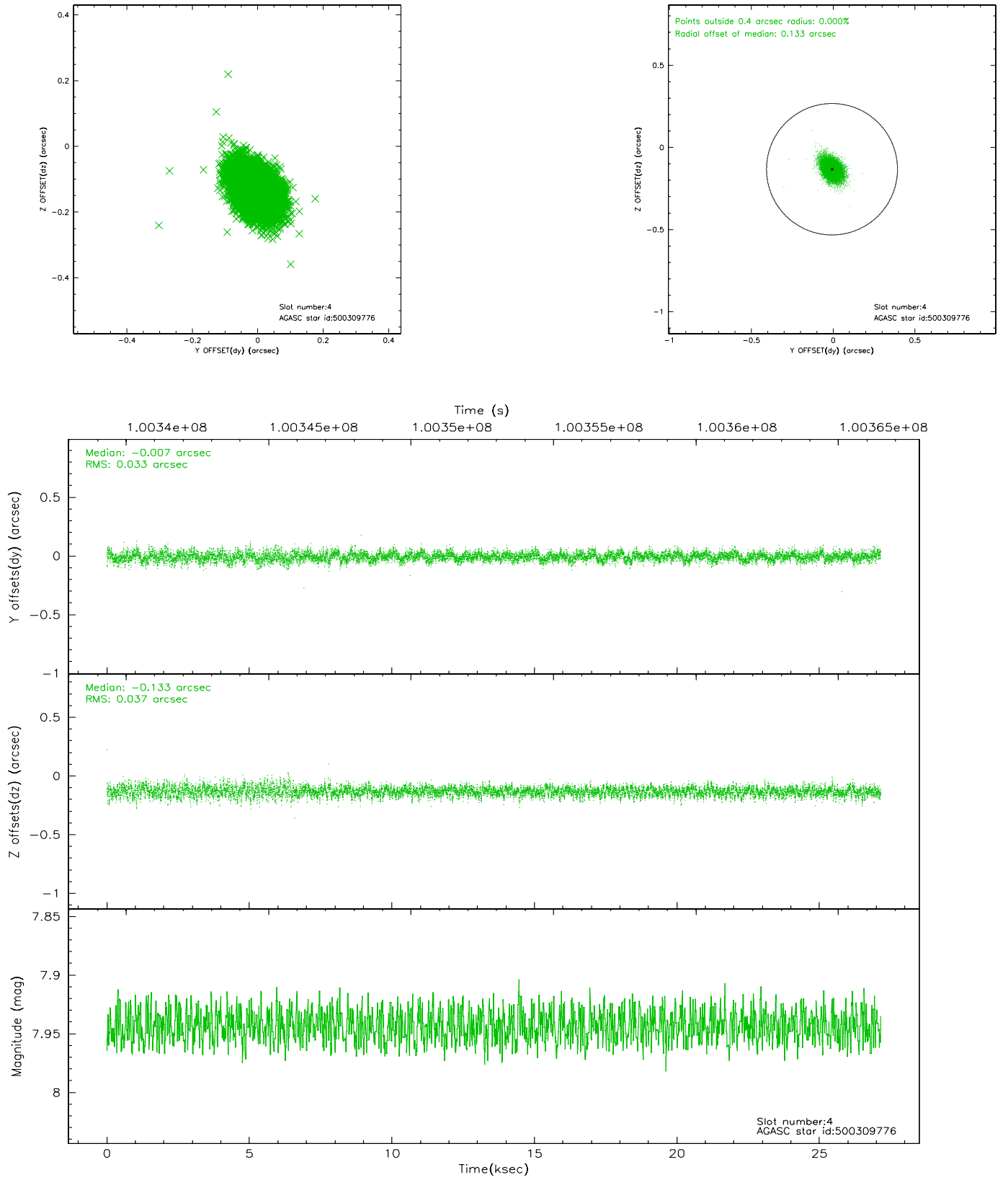


## 2.4 Star Slots

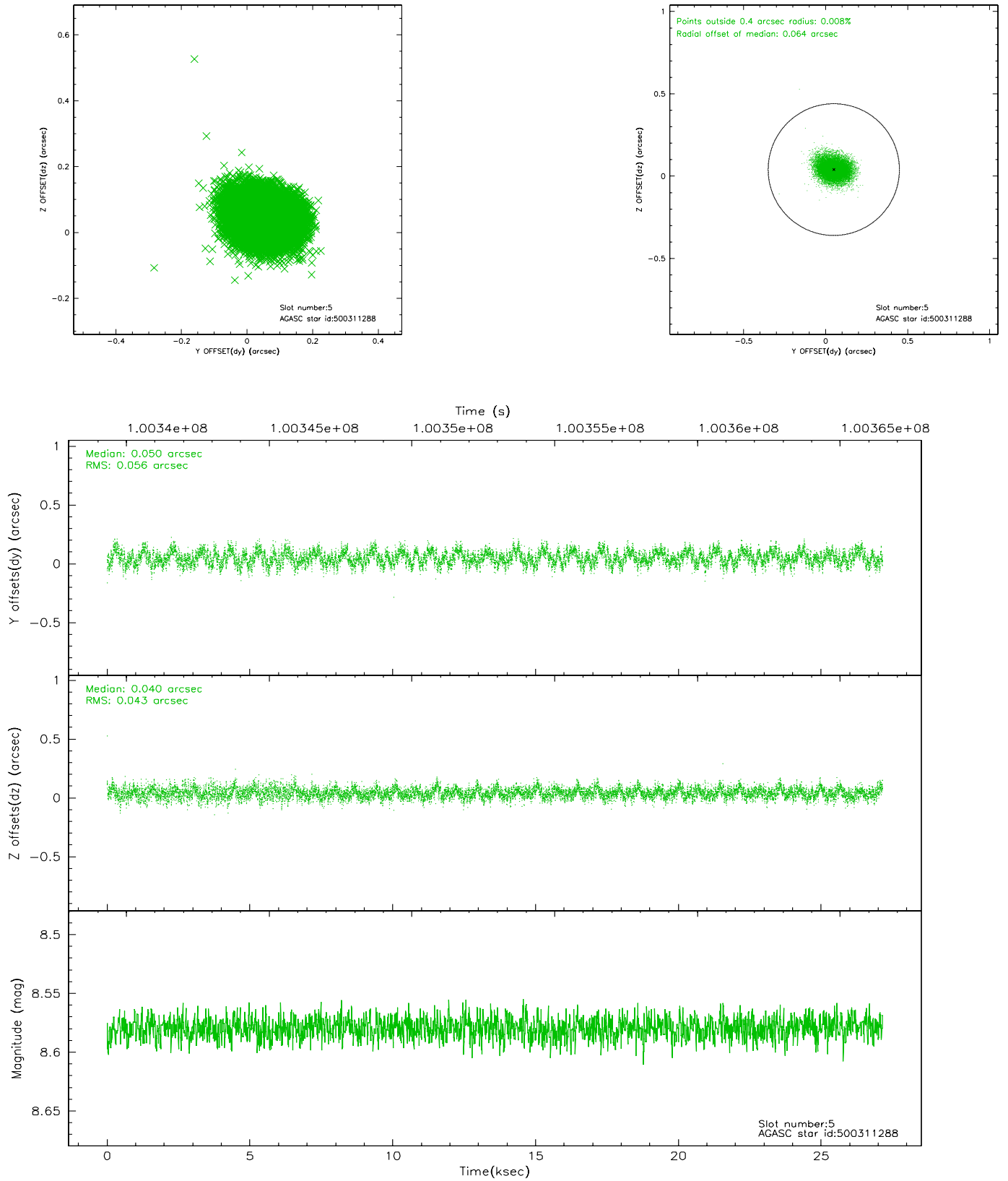
### 2.4.1 Slot 3



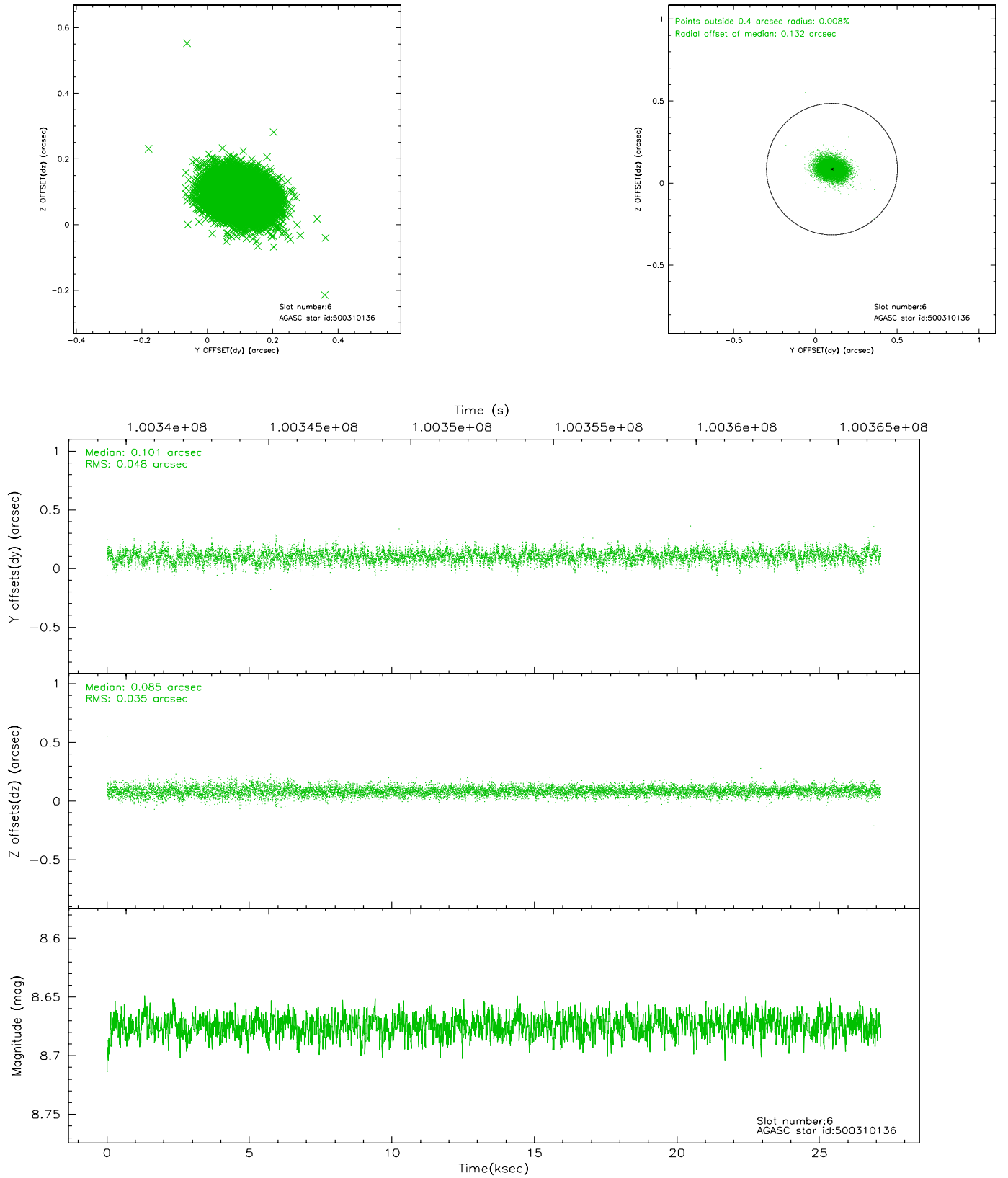
## 2.4.2 Slot 4



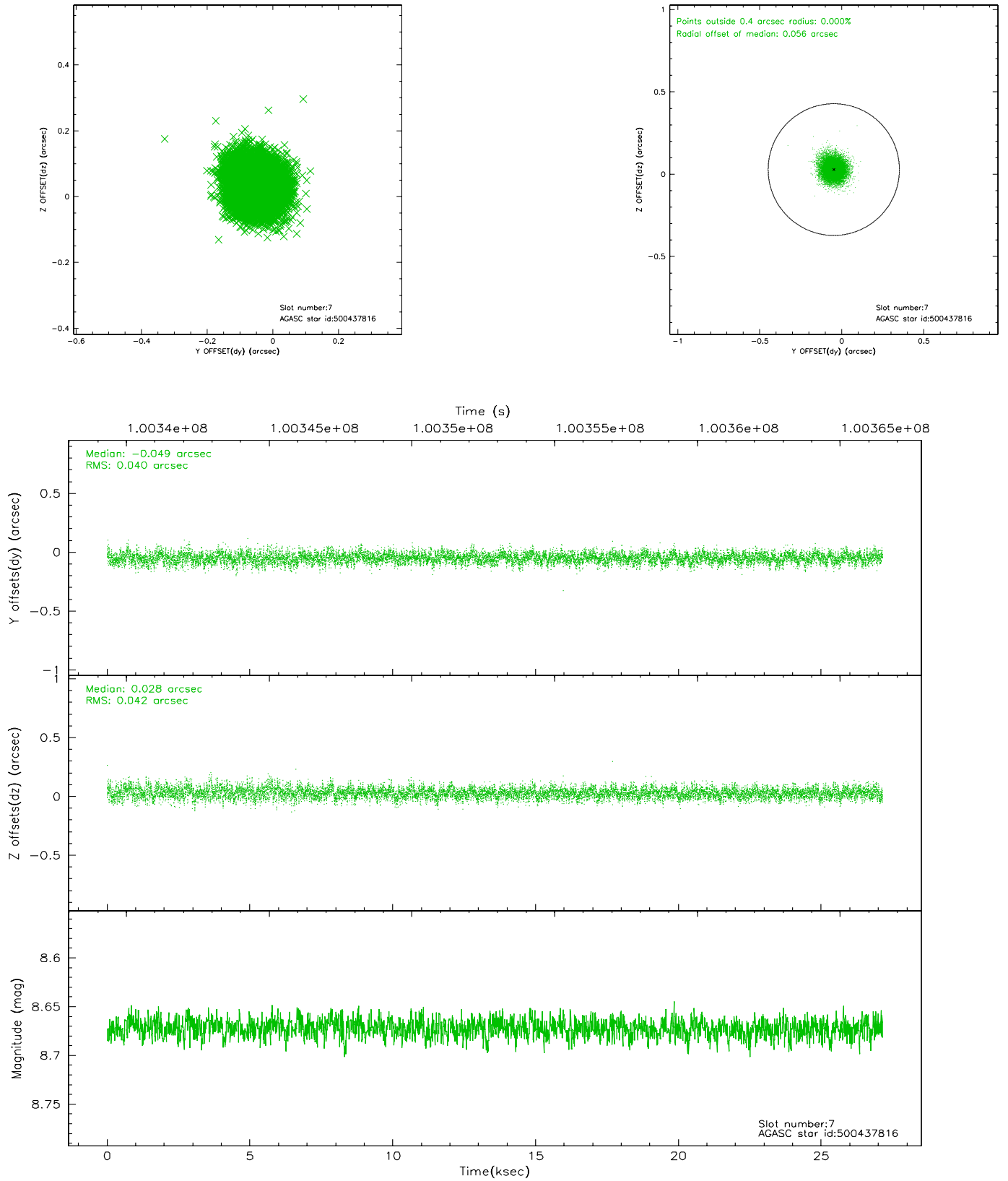
### 2.4.3 Slot 5



## 2.4.4 Slot 6

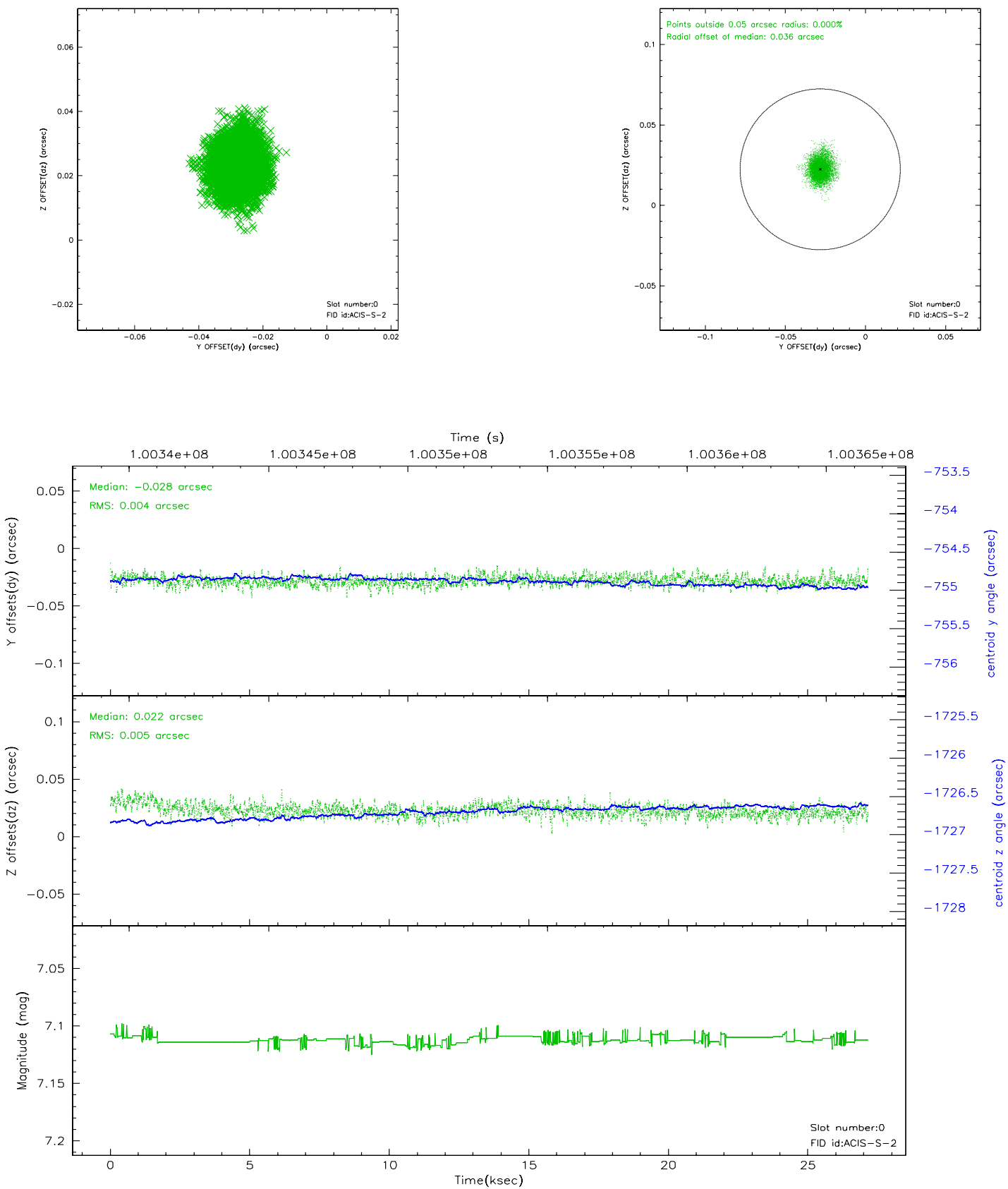


## 2.4.5 Slot 7

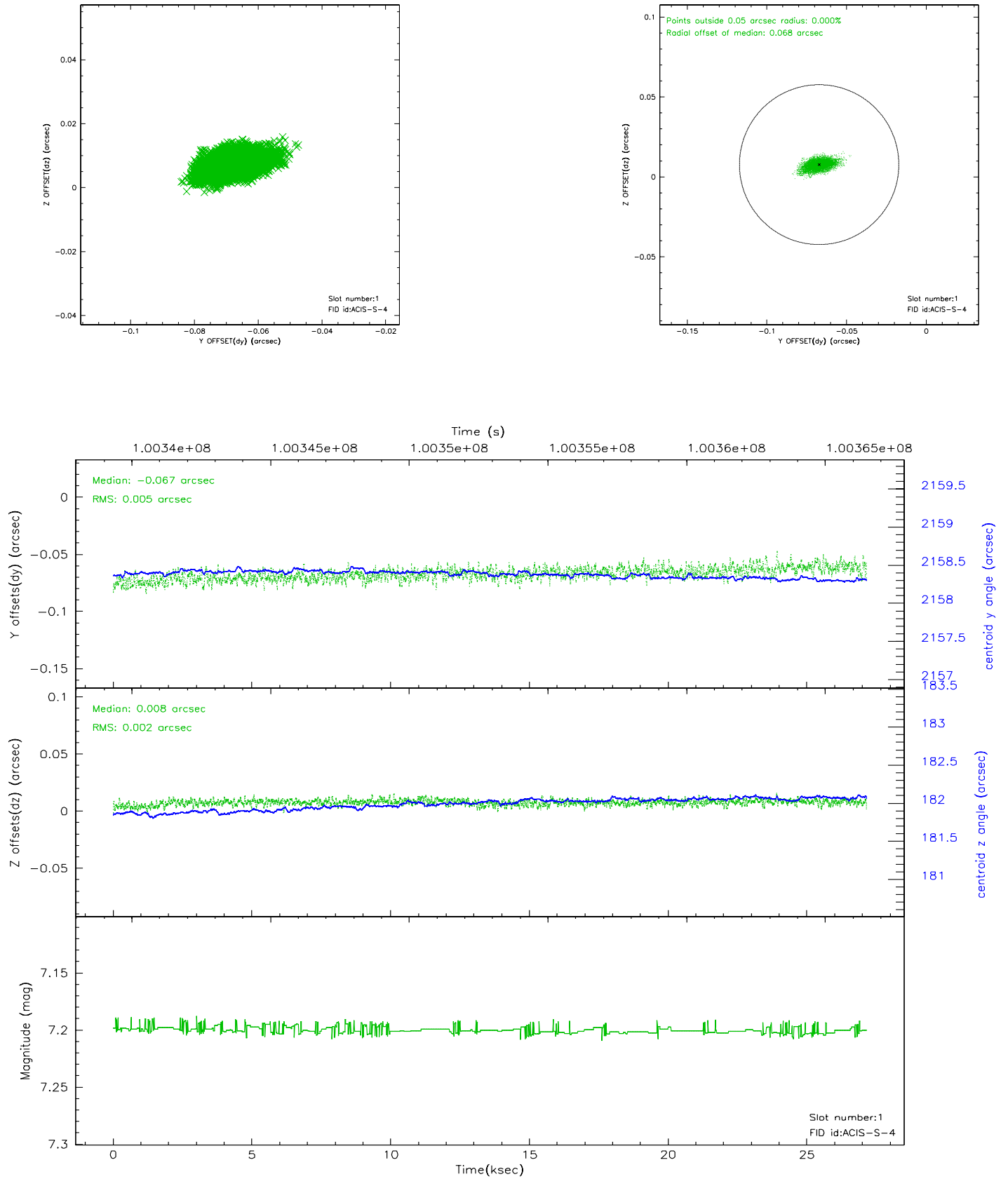


## 2.5 FID Slots

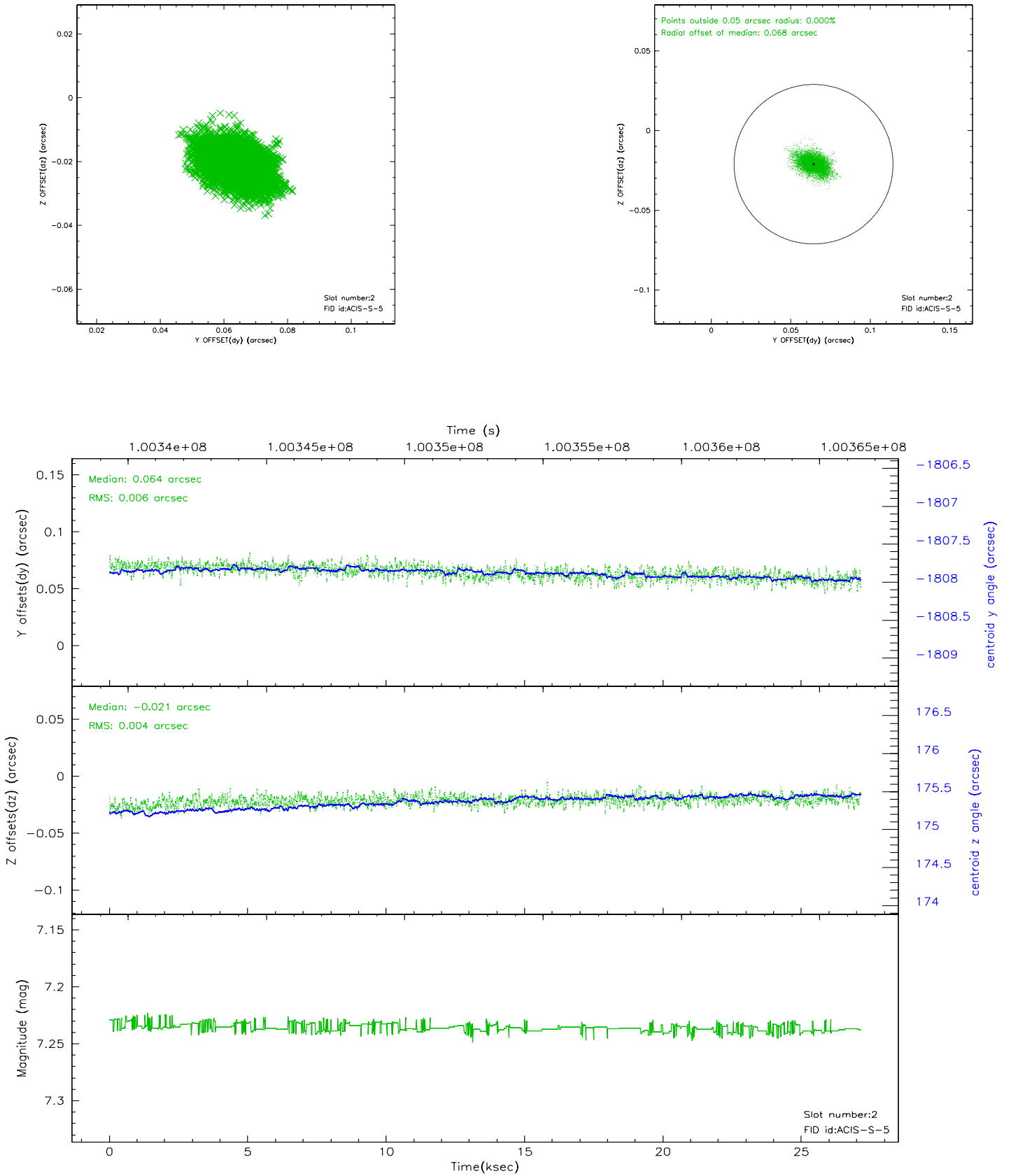
### 2.5.1 Slot 0



## 2.5.2 Slot 1

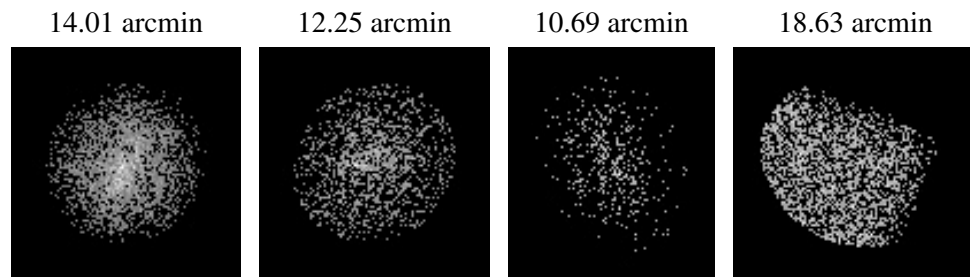


### 2.5.3 Slot 2





### 3 Point Sources



## A Summary

### A.1 Status

V&V Scientist	Jen Lauer
V&V Date (YYYY-MM-DD)	2006.11.08
V&V Edition	1
V&V Disposition and Status	OK
V&V Charge Time	26.918

### A.2 Comments

Roll constraint not met: requested 195 +/- 5, actual 200.17 degrees.