

V&V Reference Report

L2 ASCDS Version : 7.6.10

Observation 2030 - L2 Version 001
Chandra X-Ray Center

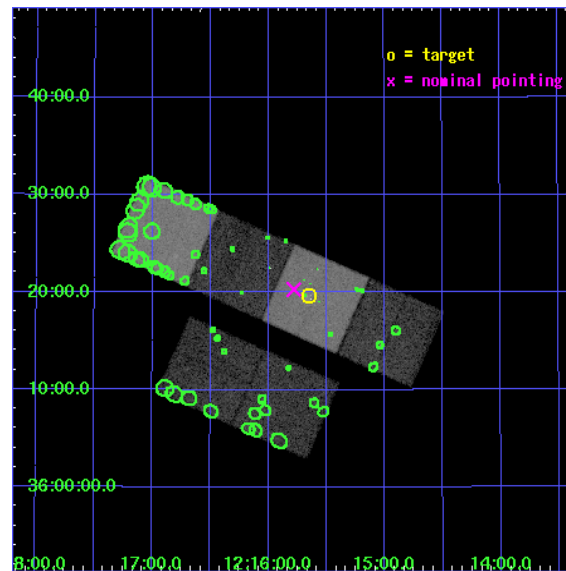
L2 Processing Date : Jan 10 2007

Contents

1	Front	2
2	OBI	3
2.1	OBI	3
2.1.1	Images	3
2.1.2	Bias	3
2.1.3	Parameters	4
2.1.4	Events	4
2.2	Compared Parameters	5
2.3	Aspect	6
2.4	Star Slots	9
2.4.1	Slot 3	9
2.4.2	Slot 4	10
2.4.3	Slot 5	11
2.4.4	Slot 6	12
2.4.5	Slot 7	13
2.5	FID Slots	14
2.5.1	Slot 0	14
2.5.2	Slot 1	15
2.5.3	Slot 2	16
3	Point Sources	17
A	Summary	18
A.1	Status	18
A.2	Comments	18

1 Front

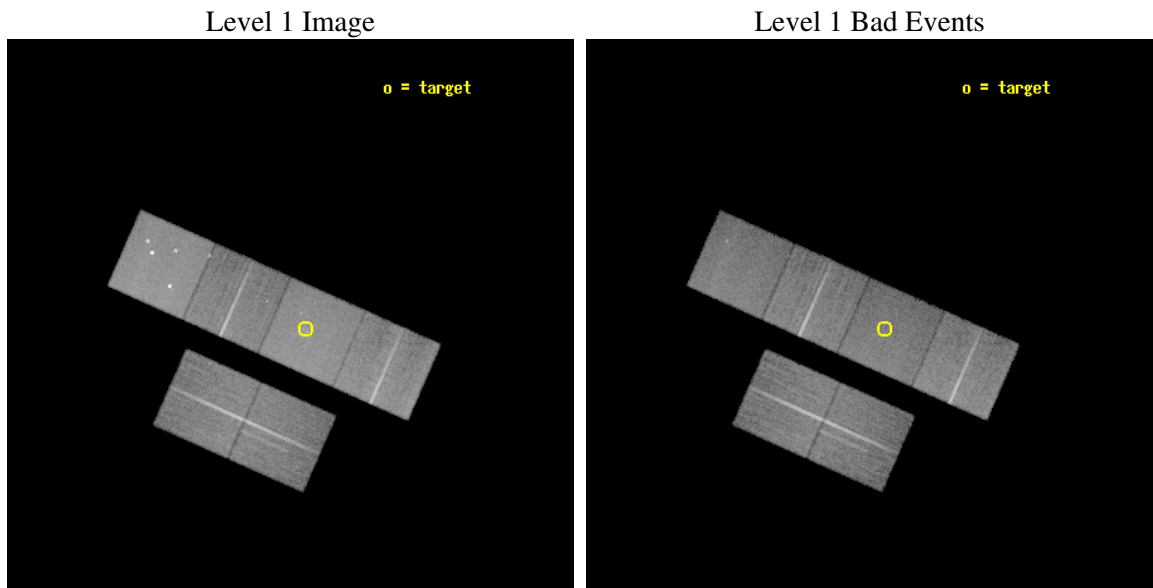
seq_num	600164
obs_id	2030
title	STARBURST-DRIVEN OUTFLOWS AND THE EVOLUTION OF DWARF GALAXIES
observer	Dr. Tim Heckman
object	NGC 4214
dtcycle	0
cycle	P
ra_targ	183.91125
dec_targ	36.328306
ra_nom	183.9451579062
dec_nom	36.338464465586
roll_nom	23.862441325953
revision	2
ontime	26761.600024924
livetime	26422.728531507
ontime2	26761.600024924
ontime3	26761.600024924
ontime5	26761.600024924
ontime6	26761.600024924
ontime7	26761.600024924
ontime8	26758.359204248
l2events	267754



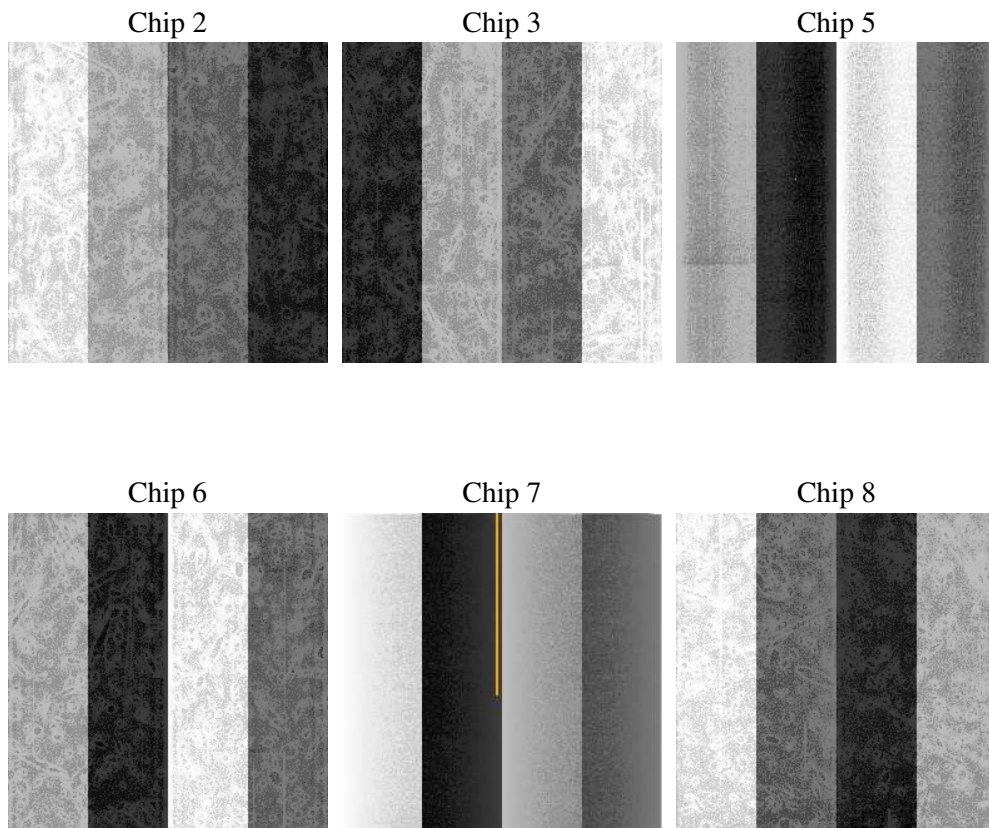
2 OBI

2.1 OBI

2.1.1 Images



2.1.2 Bias



2.1.3 Parameters

obi_num	0
ascdsver	7.6.10
caldsver	3.3.0
date	2007-01-10T13:14:08
revision	2

sched_exp_time	27000.000000
ontime	26761.600024924
ontime2	26761.600024924
ontime3	26761.600024924
ontime5	26761.600024924
ontime6	26761.600024924
ontime7	26761.600024924
ontime8	26758.359204248
l1events	1167933

2.1.4 Events

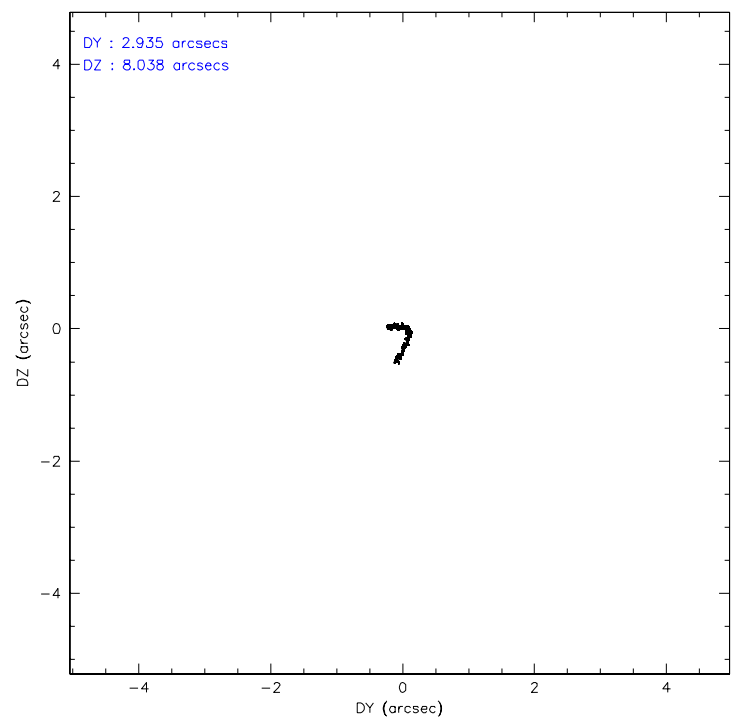
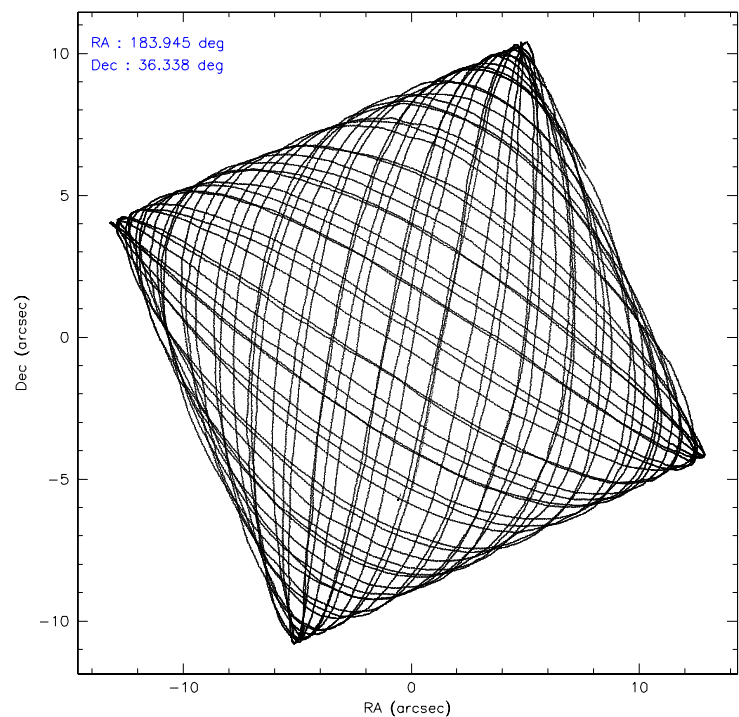
	ccd 2	ccd 3	ccd 5	ccd 6	ccd 7	ccd 8
level 1 events	169858	156567	245395	168258	219034	208821
rejected events	150684	137991	125395	148618	122907	167851
rejected %	88%	88%	51%	88%	56%	80%

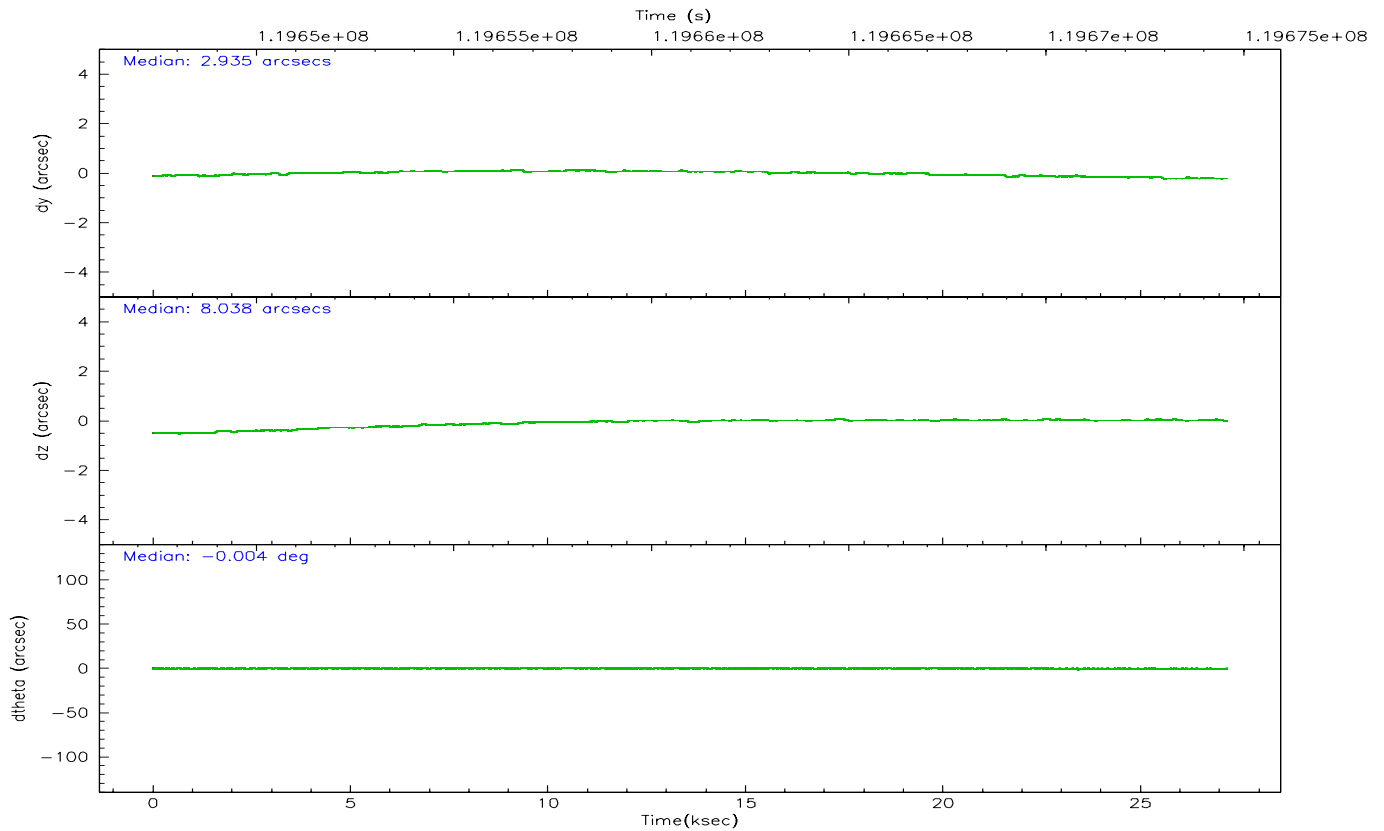
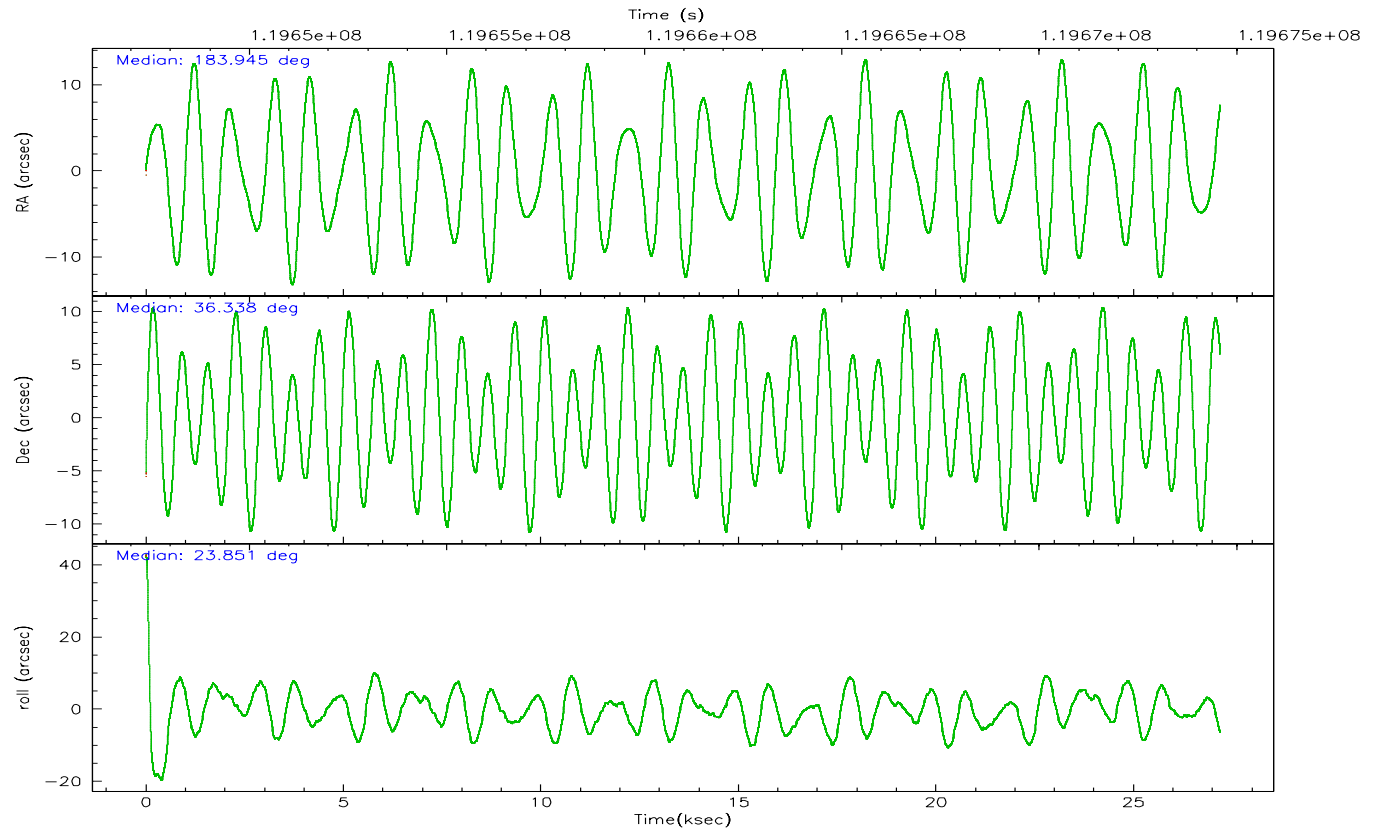
	ccd 2	ccd 3	ccd 5	ccd 6	ccd 7	ccd 8
grade 0 events	8293	8064	21080	8048	10339	13394
	4%	5%	8%	4%	4%	6%
grade 1 events	75	73	635	89	178	121
	0%	0%	0%	0%	0%	0%
grade 2 events	4049	3753	31992	4072	19198	8653
	2%	2%	13%	2%	8%	4%
grade 3 events	1710	1751	5037	1876	8807	4454
	1%	1%	2%	1%	4%	2%
grade 4 events	1782	1761	4892	1927	8514	4105
	1%	1%	1%	1%	3%	1%
grade 5 events	5778	6375	17583	7109	20185	8780
	3%	4%	7%	4%	9%	4%
grade 6 events	3344	3249	57013	3719	49282	10367
	1%	2%	23%	2%	22%	4%
grade 7 events	144827	131541	107163	141418	102531	158947
	85%	84%	43%	84%	46%	76%

2.2 Compared Parameters

Parameter	Planned	Actual	Parameter	Planned	Actual
Instrument	ACIS	ACIS	Obspar format version number	6	6
Detector	ACIS-235678	ACIS-235678	Obspar file type	PREDICTED	ACTUAL
Grating	NONE	NONE	Obspar update status	NONE	UPDATED
Data mode	FAINT	FAINT	Number of optional ACIS chips dropped	0	0
Observation mode	POINTING	POINTING	On-chip summing requested	N	N
Pointing RA	183.925514	183.9451579062027	Subarray requested	NONE	NONE
Pointing Dec	36.316246	36.33846446558564	Alternating exposures requested	N	N
Pointing Roll	23.717429	23.86244132595258	Primary exposure time	0.000000	3.2
SIM focus pos (mm)	-0.684267	-0.6828225247311905			
SIM defocus (mm)	0	0.001444936568705701			
SIM translation stage pos (mm)	-190.132523	-190.1425803651734			
SIM translation stage offset (mm)	0	0.01005778216563158			
Observation start time	119647583.184000	119646680.36136			
Observation start date	2001-10-16T19:25:19	2001-10-16T19:11:20			
Observation end time	119674583.184000	119674944.22499			
Observation end date	2001-10-17T02:55:19	2001-10-17T03:02:24			
Read mode	TIMED	TIMED			

2.3 Aspect



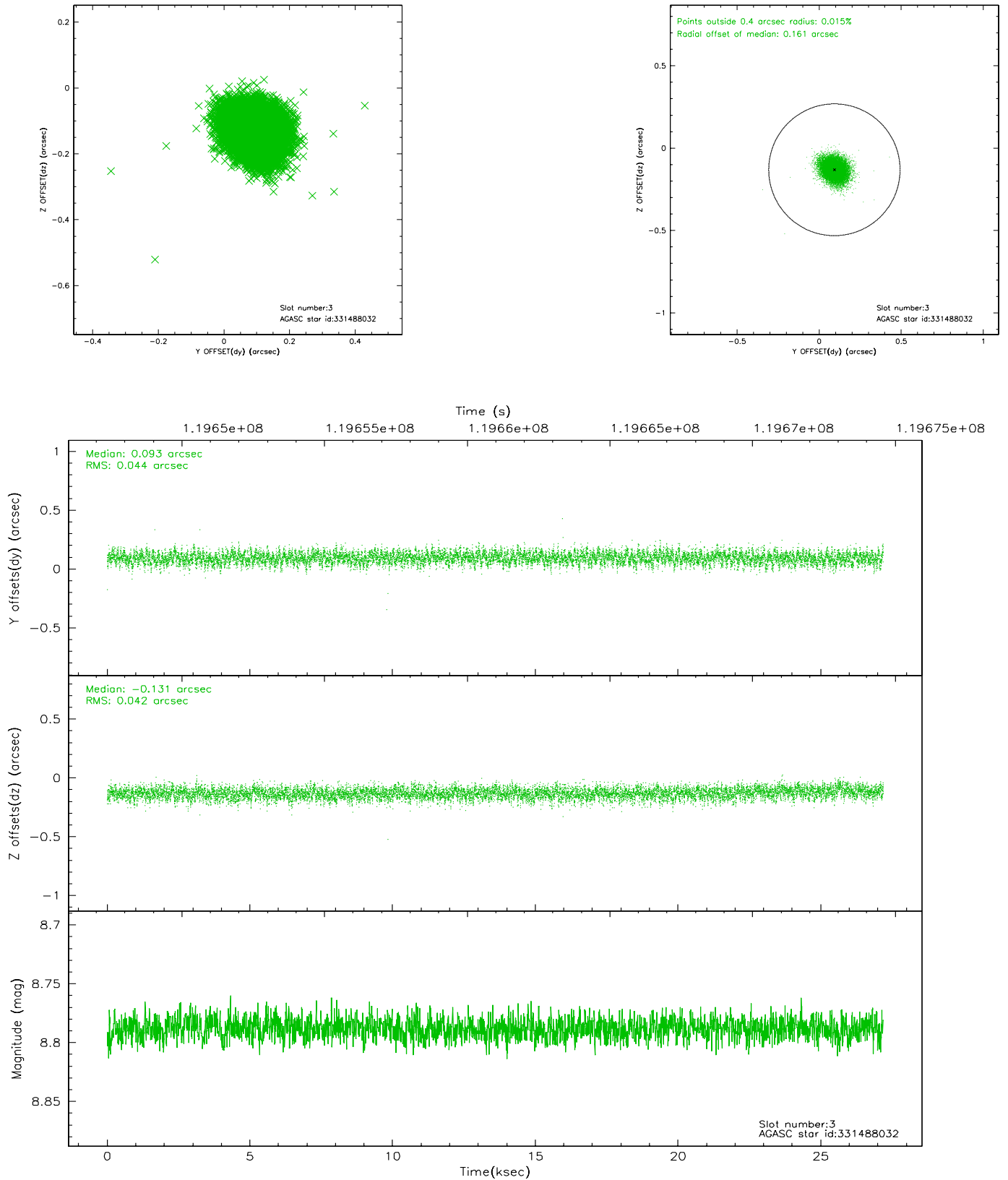


Slot Statistics

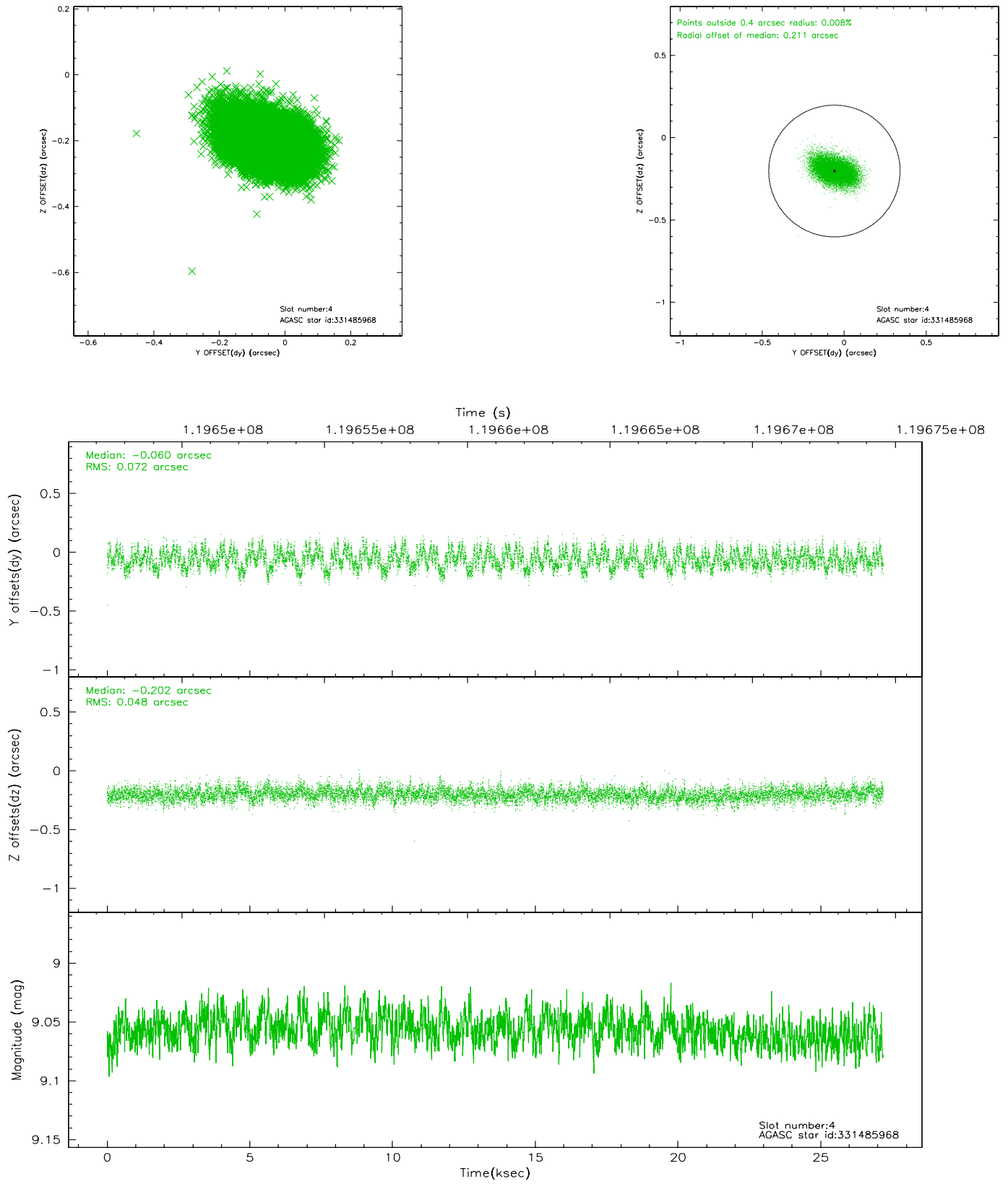
slot	status	id	mag	n_pts	med_dy	med_dz	dr1	dr2	ra	dec	mean_y	mean_z
0	FID	ACIS-S-2	7.11	6632	0.015	0.026	0.009	0.022	0.000000	0.000000	-755.56	-1729.05
1	FID	ACIS-S-4	7.20	6632	-0.095	-0.015	0.007	0.026	0.000000	0.000000	2157.59	179.27
2	FID	ACIS-S-5	7.24	6633	0.048	-0.003	0.008	0.016	0.000000	0.000000	-1808.23	173.09
3	GUIDE	331488032	8.79	13260	0.093	-0.131	0.064	0.104	183.136084	36.256011	-2181.98	731.53
4	GUIDE	331485968	9.06	13260	-0.060	-0.202	0.092	0.149	183.439805	36.736932	-673.29	1953.37
5	GUIDE	331497752	9.12	13256	-0.052	0.179	0.099	0.157	183.857768	35.567281	-1266.12	-2388.37
6	GUIDE	331496008	9.37	13260	-0.059	0.067	0.079	0.130	184.214946	35.936223	222.45	-1590.58
7	GUIDE	331496608	9.60	13252	0.077	0.093	0.096	0.153	183.557200	35.638037	-1968.05	-1800.23

2.4 Star Slots

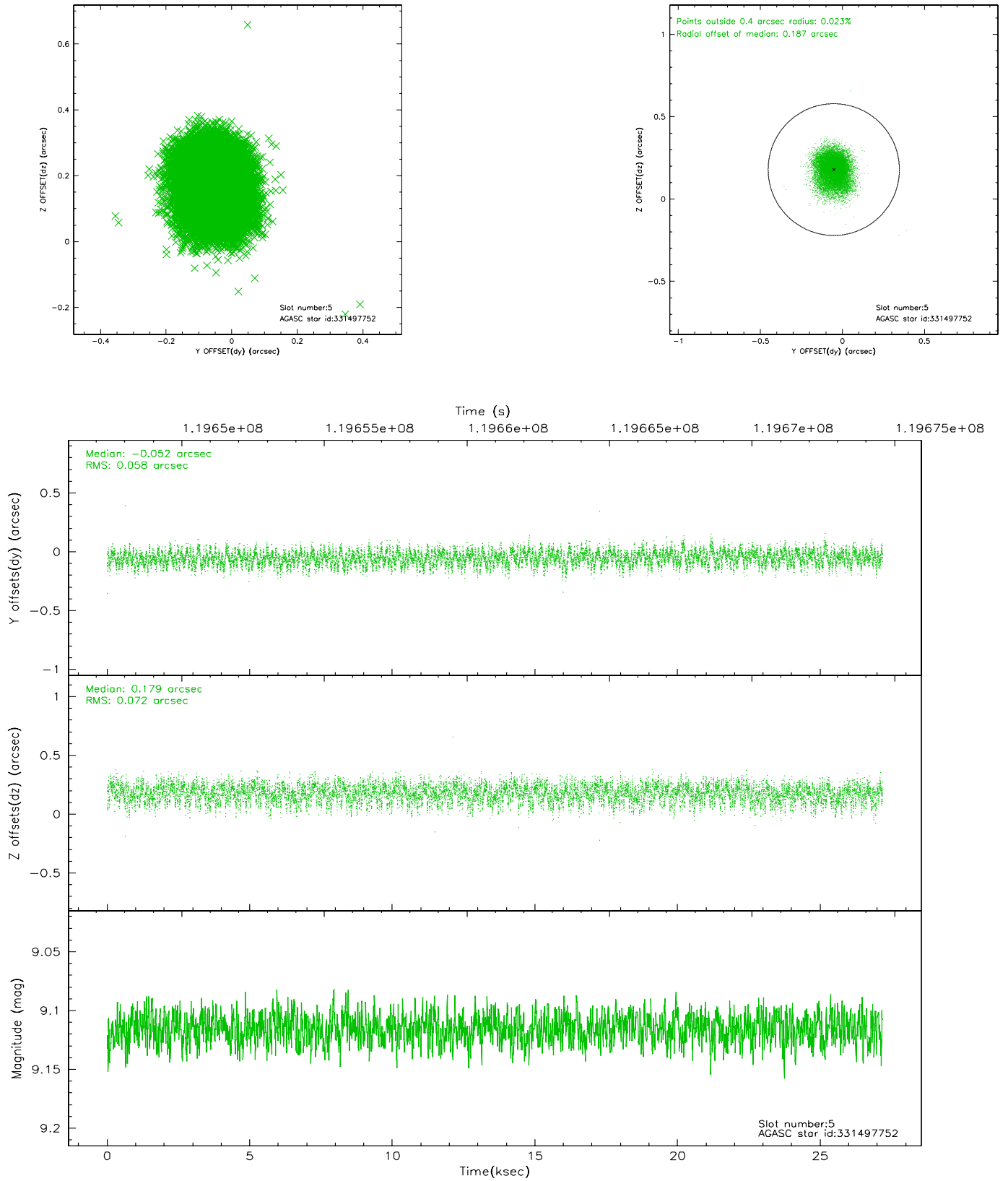
2.4.1 Slot 3



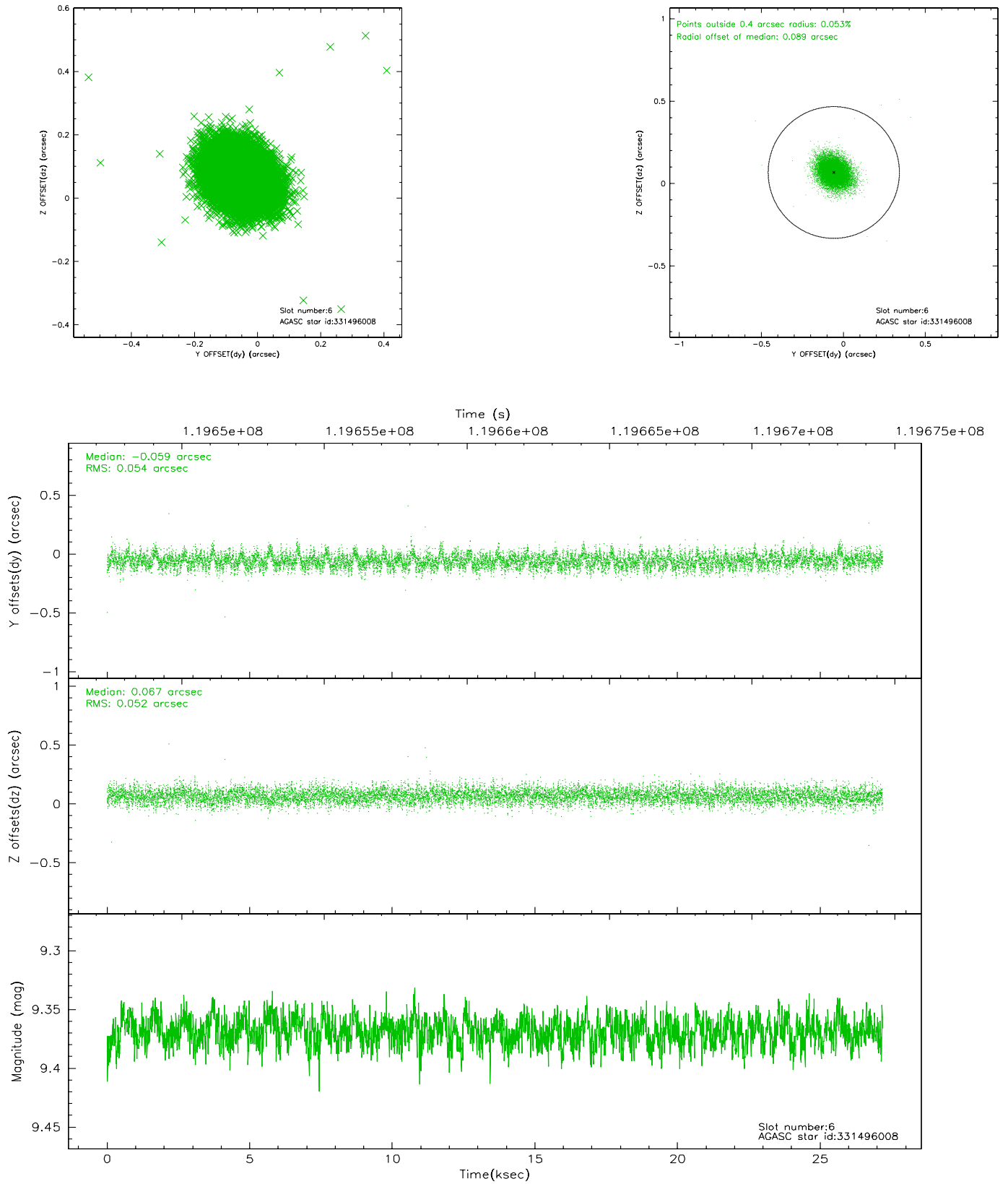
2.4.2 Slot 4



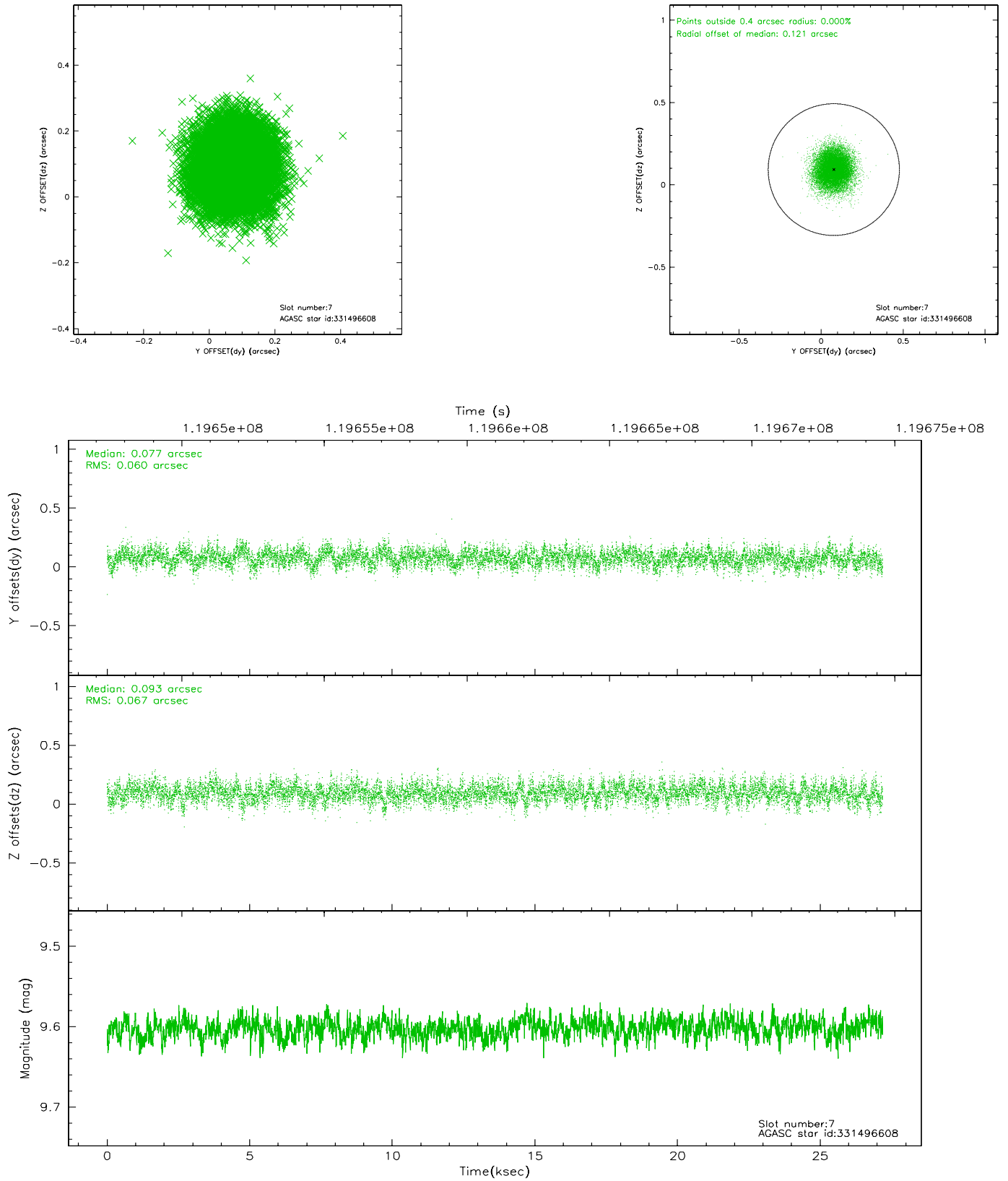
2.4.3 Slot 5



2.4.4 Slot 6

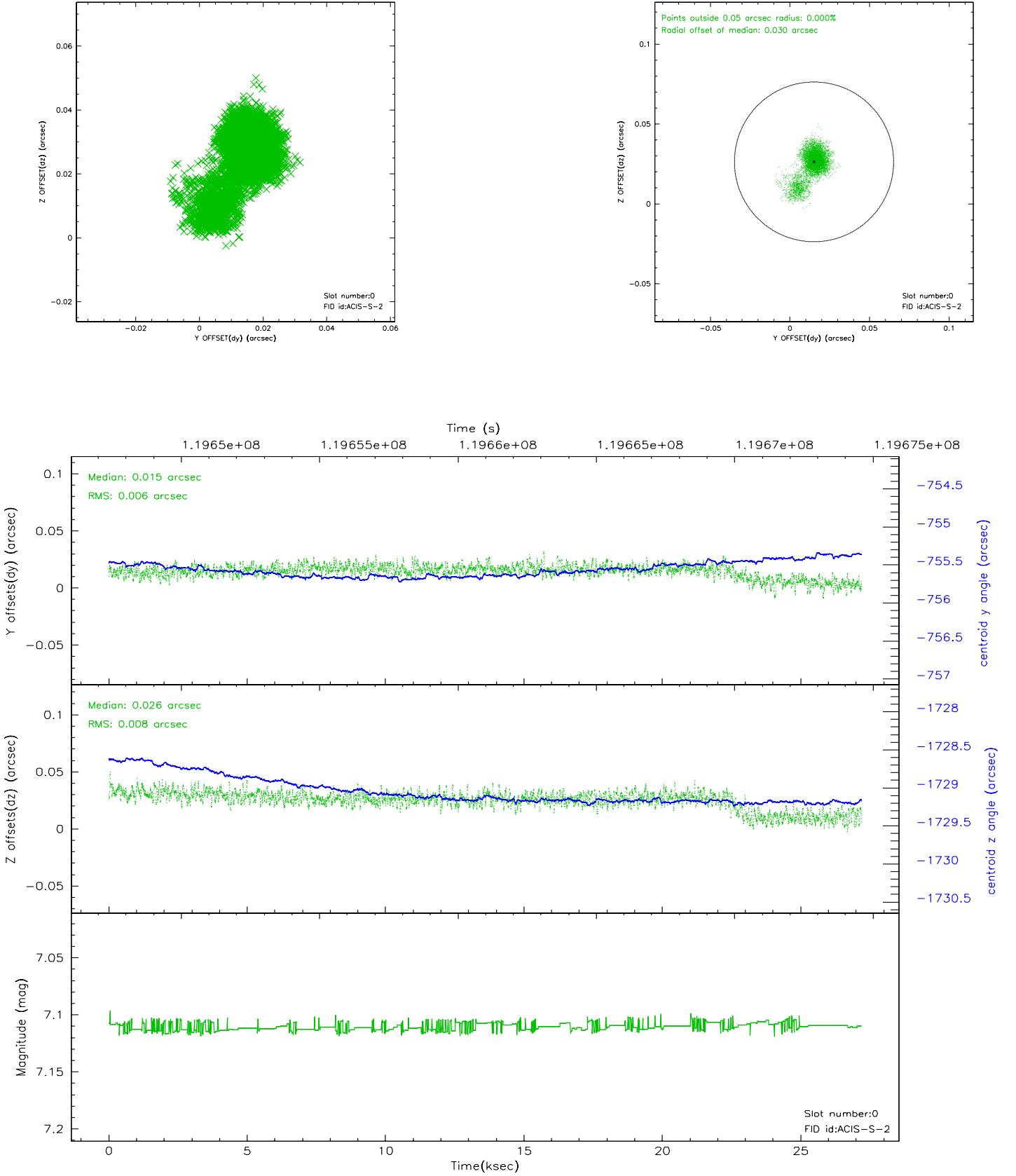


2.4.5 Slot 7

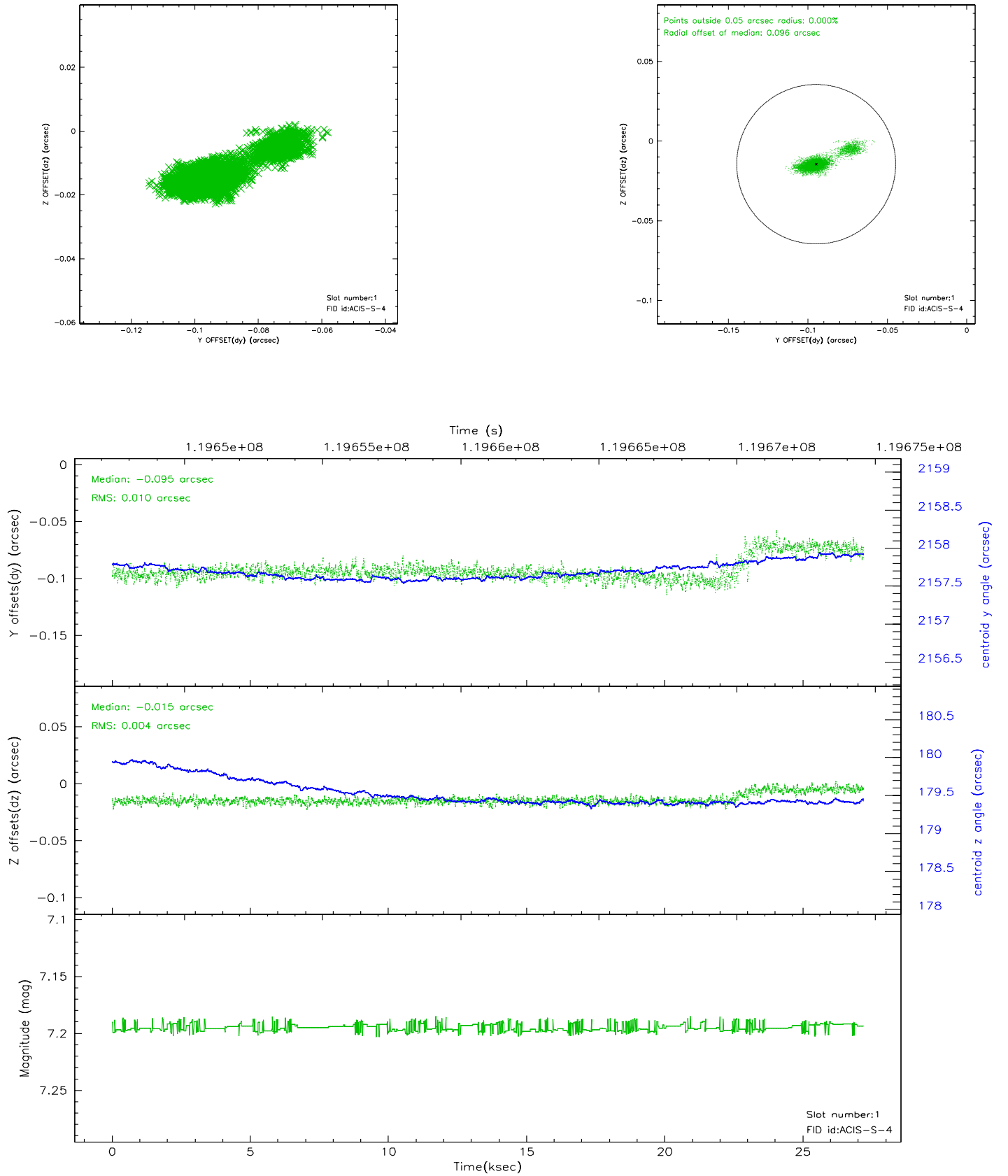


2.5 FID Slots

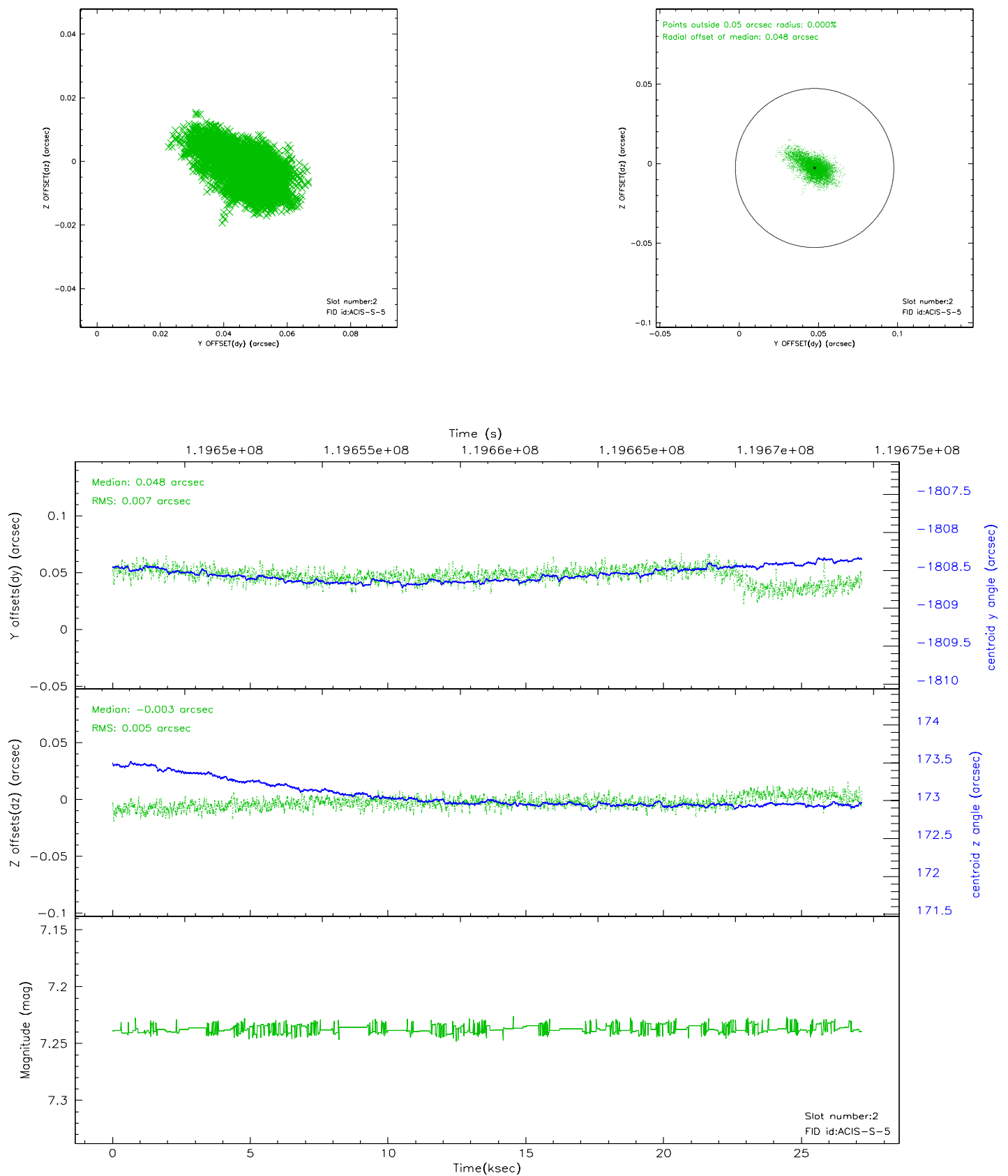
2.5.1 Slot 0



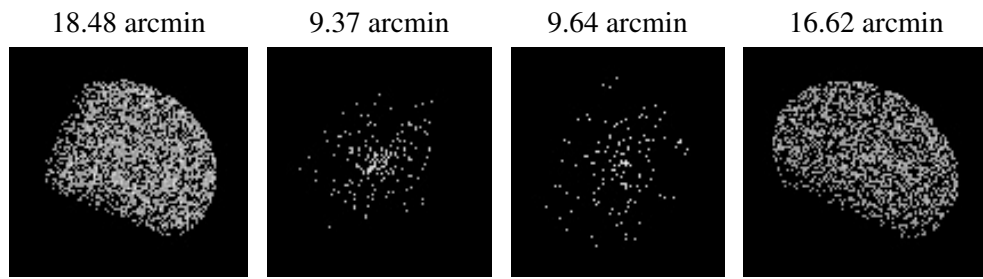
2.5.2 Slot 1



2.5.3 Slot 2



3 Point Sources



A Summary

A.1 Status

V&V Scientist	Jen Lauer
V&V Date (YYYY-MM-DD)	2007.01.10
V&V Edition	1
V&V Disposition and Status	OK
V&V Charge Time	26.761

A.2 Comments

The entire galaxy is on S3 as requested.