

# V&V Reference Report

## L2 ASCDS Version : 7.6.9

Observation 2015 - L2 Version 001  
Chandra X-Ray Center

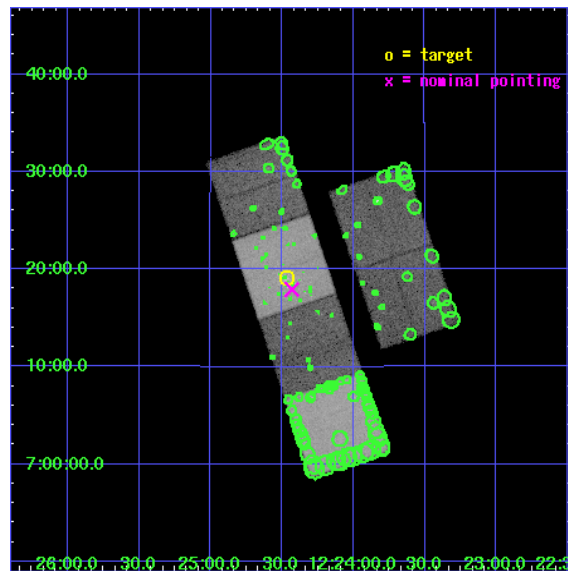
L2 Processing Date : Nov 25 2006

## Contents

<b>1</b>	<b>Front</b>	<b>2</b>
<b>2</b>	<b>OBI</b>	<b>3</b>
2.1	OBI . . . . .	3
2.1.1	Images . . . . .	3
2.1.2	Bias . . . . .	3
2.1.3	Parameters . . . . .	4
2.1.4	Events . . . . .	4
2.2	Compared Parameters . . . . .	5
2.3	Aspect . . . . .	6
2.4	Star Slots . . . . .	9
2.4.1	Slot 3 . . . . .	9
2.4.2	Slot 4 . . . . .	10
2.4.3	Slot 5 . . . . .	11
2.4.4	Slot 6 . . . . .	12
2.4.5	Slot 7 . . . . .	13
2.5	FID Slots . . . . .	14
2.5.1	Slot 0 . . . . .	14
2.5.2	Slot 1 . . . . .	15
2.5.3	Slot 2 . . . . .	16
<b>3</b>	<b>Point Sources</b>	<b>17</b>
<b>A</b>	<b>Summary</b>	<b>18</b>
A.1	Status . . . . .	18
A.2	Comments . . . . .	18

# 1 Front

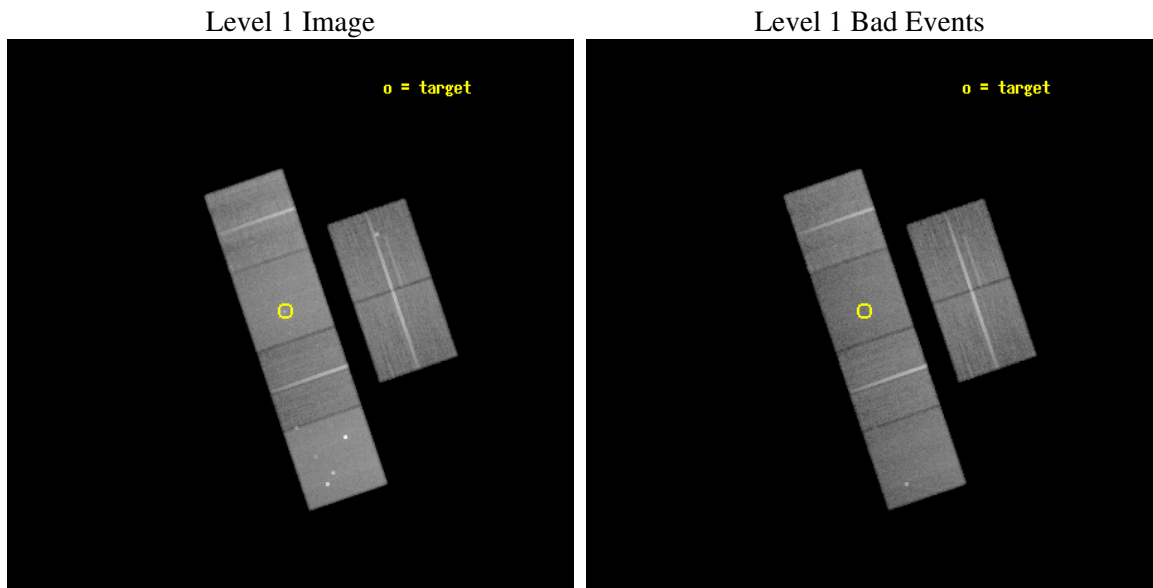
seq_num	600149
obs_id	2015
title	RESOLVING THE X-RAY BINARY POPULATION IN EARLY-TYPE GALAXIES
observer	Dr. Craig Sarazin
object	NGC4365
dtcycle	0
cycle	P
ra_targ	186.11625
dec_targ	7.318028
ra_nom	186.10781448828
dec_nom	7.2989280562665
roll_nom	251.22845299444
revision	2
ontime	40953.600038141
livetime	40435.020895161
ontime2	40950.359077886
ontime3	40953.600038141
ontime5	40953.600038141
ontime6	40950.359067902
ontime7	40953.600038141
ontime8	40953.600038141
l2events	397476



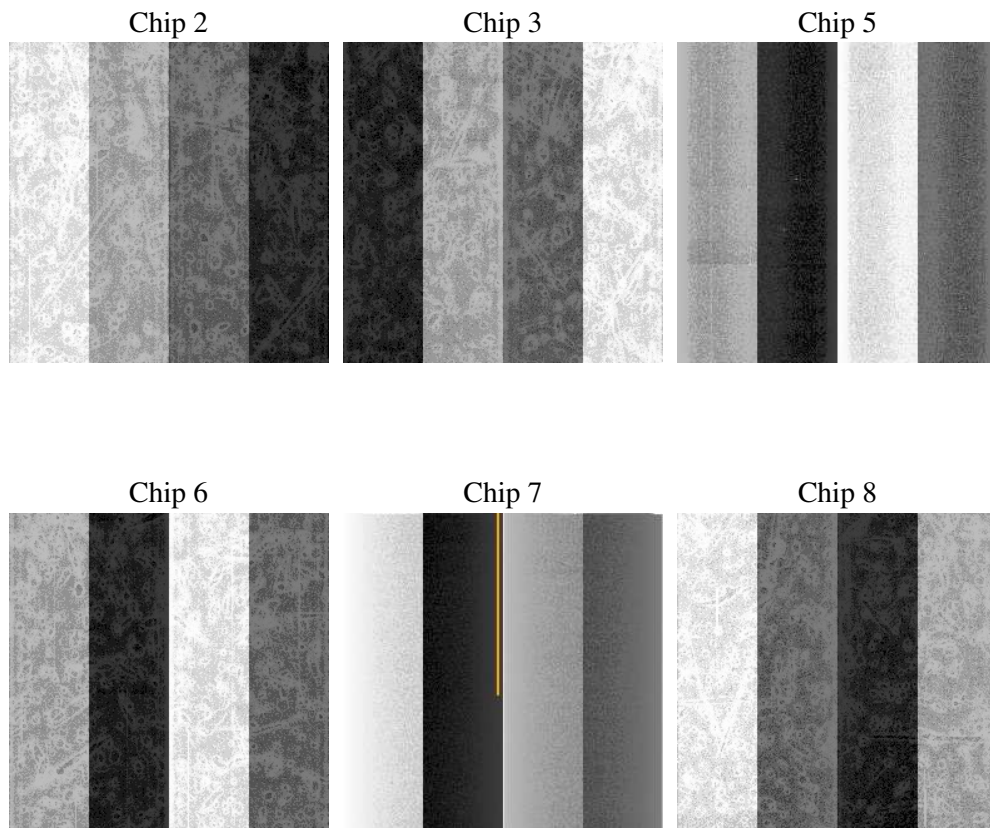
## 2 OBI

### 2.1 OBI

#### 2.1.1 Images



#### 2.1.2 Bias



### 2.1.3 Parameters

obi_num	0
ascdsver	7.6.9
caldsver	3.2.4
date	2006-11-25T05:25:05
revision	2

sched_exp_time	41000.000000
ontime	40956.541845322
ontime2	40953.300885066
ontime3	40956.541845322
ontime5	40956.541845322
ontime6	40953.300875083
ontime7	40956.541845322
ontime8	40956.541845322
l1events	1852389

### 2.1.4 Events

	ccd 2	ccd 3	ccd 5	ccd 6	ccd 7	ccd 8
level 1 events	269002	259425	378983	266686	341030	337263
rejected events	238774	227839	204876	235402	204447	265846
rejected %	88%	87%	54%	88%	59%	78%

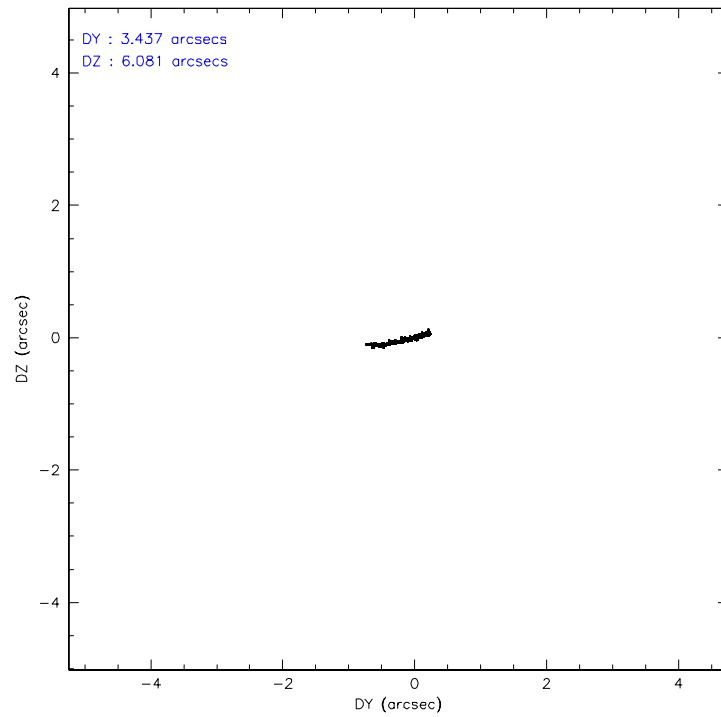
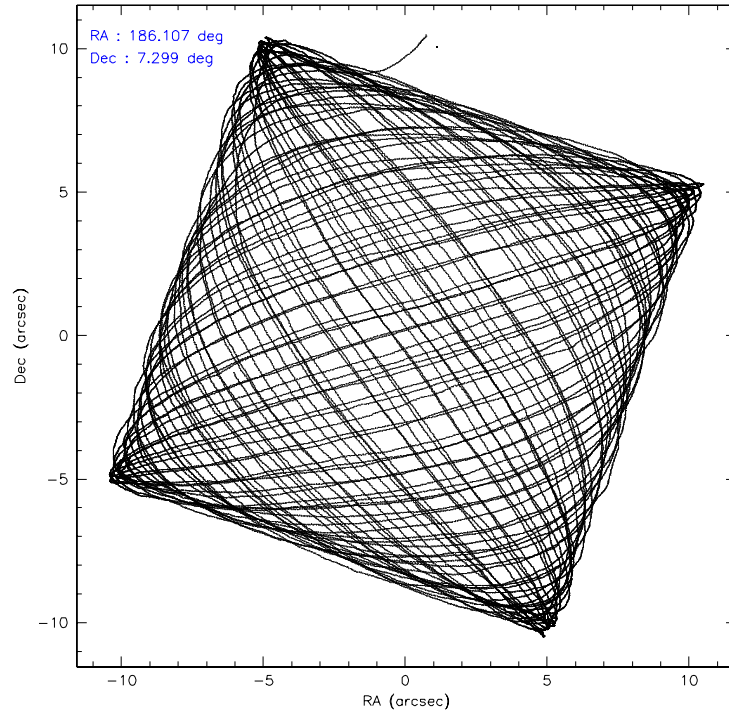
	ccd 2	ccd 3	ccd 5	ccd 6	ccd 7	ccd 8
grade 0 events	13058	14575	22073	13178	11262	22820
	4%	5%	5%	4%	3%	6%
grade 1 events	151	129	428	131	197	213
	0%	0%	0%	0%	0%	0%
grade 2 events	6516	6071	52571	6182	33328	15264
	2%	2%	13%	2%	9%	4%
grade 3 events	2783	2830	4267	2979	7945	7781
	1%	1%	1%	1%	2%	2%
grade 4 events	2778	2951	4005	2969	7671	7139
	1%	1%	1%	1%	2%	2%
grade 5 events	8967	10045	18404	11120	22399	14123
	3%	3%	4%	4%	6%	4%
grade 6 events	5095	5163	91211	5979	76383	18417
	1%	1%	24%	2%	22%	5%
grade 7 events	229654	217661	186024	224148	181845	251506
	85%	83%	49%	84%	53%	74%

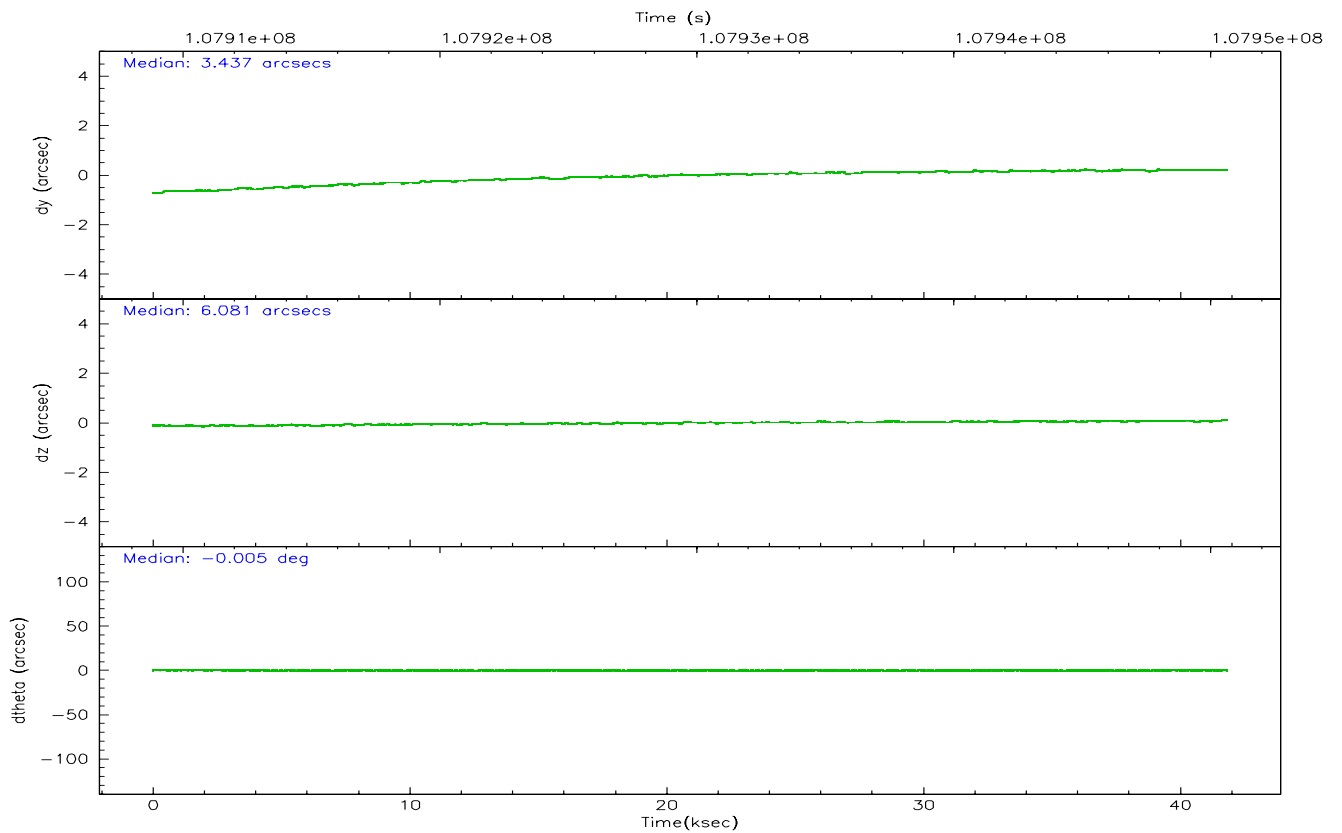
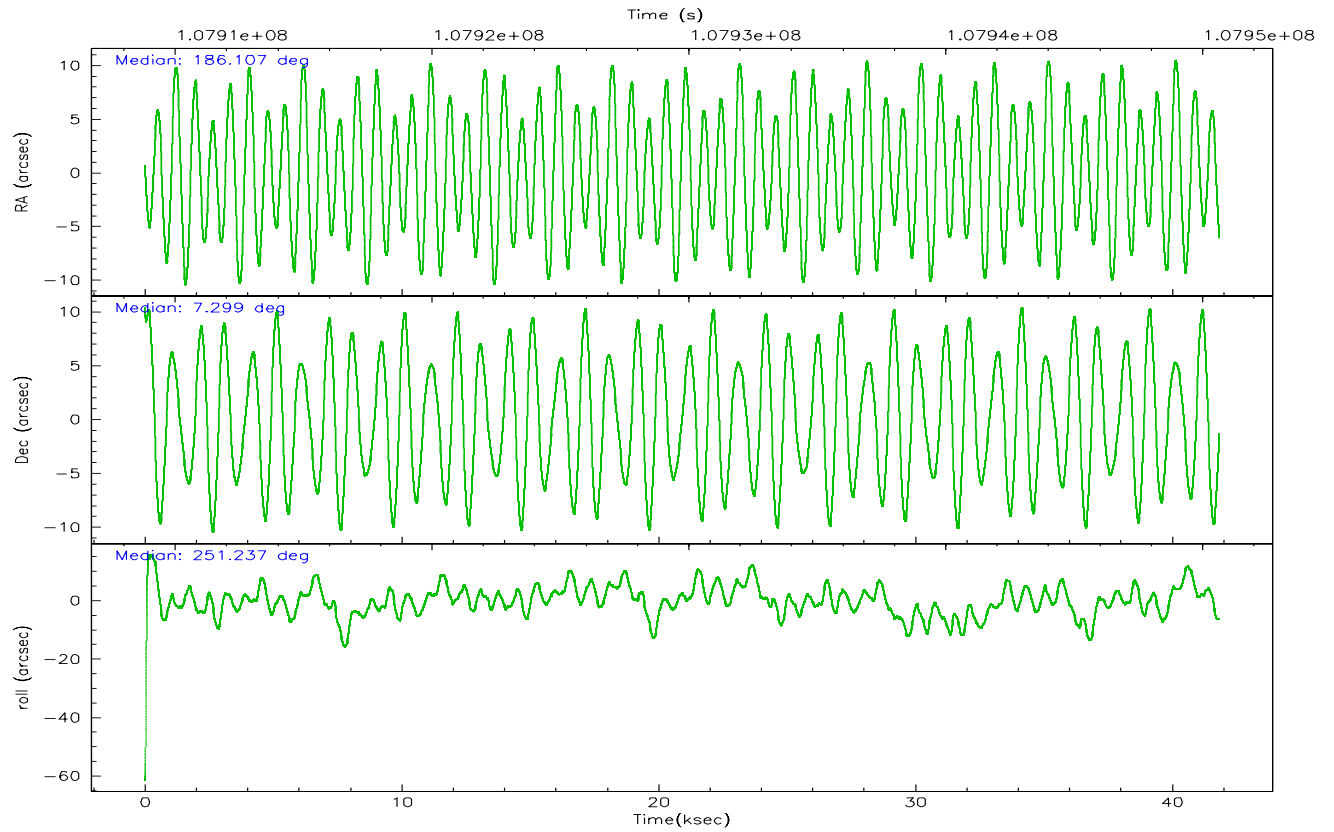


## 2.2 Compared Parameters

Parameter	Planned	Actual	Parameter	Planned	Actual
Instrument	ACIS	ACIS	Obspar format version number	6	6
Detector	ACIS-235678	ACIS-235678	Obspar file type	PREDICTED	ACTUAL
Grating	NONE	NONE	Obspar update status	NONE	UPDATED
Data mode	FAINT	FAINT	Number of optional ACIS chips dropped	0	0
Observation mode	POINTING	POINTING	On-chip summing requested	N	N
Pointing RA	186.102183	186.1078144882799	Subarray requested	NONE	NONE
Pointing Dec	7.325629	7.298928056266477	Alternating exposures requested	N	N
Pointing Roll	251.072560	251.2284529944387	Primary exposure time	0.000000	3.2
SIM focus pos (mm)	-0.684267	-0.6828225247311905			
SIM defocus (mm)	0	0.001444936568705701			
SIM translation stage pos (mm)	-190.132523	-190.1400660498719			
SIM translation stage offset (mm)	0	0.00754346686406393			
Observation start time	107909644.184000	107908363.49964			
Observation start date	2001-06-02T22:53:00	2001-06-02T22:32:43			
Observation end time	107950644.184000	107951244.37631			
Observation end date	2001-06-03T10:16:20	2001-06-03T10:27:24			
Read mode	TIMED	TIMED			

## 2.3 Aspect



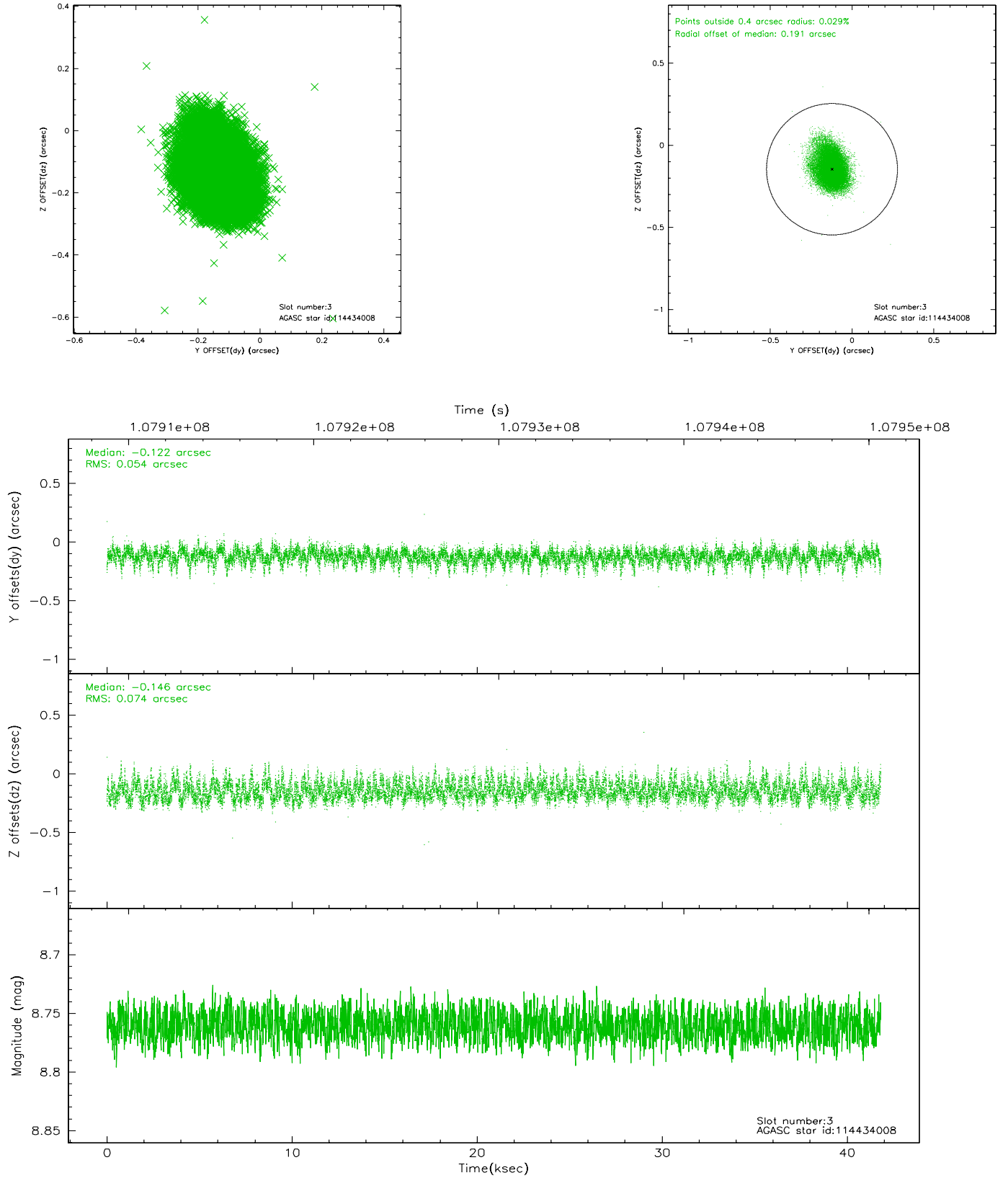


### Slot Statistics

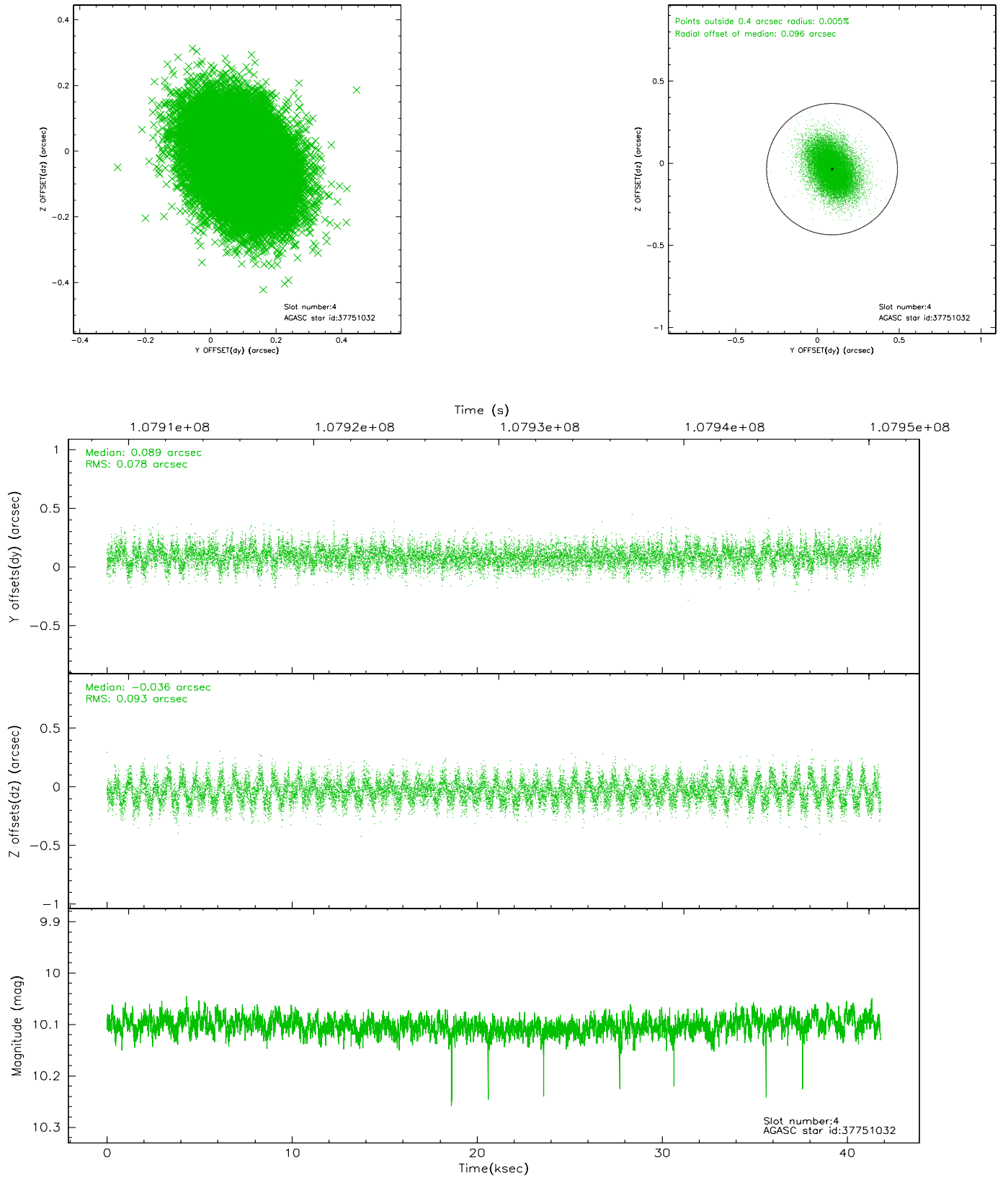
slot	status	id	mag	n_pts	med_dy	med_dz	dr1	dr2	ra	dec	mean_y	mean_z
0	FID	ACIS-S-2	7.11	10200	-0.008	0.036	0.008	0.012	0.000000	0.000000	-755.96	-1727.19
1	FID	ACIS-S-4	7.20	10200	-0.073	-0.006	0.009	0.019	0.000000	0.000000	2157.19	181.31
2	FID	ACIS-S-5	7.24	10199	0.050	-0.021	0.012	0.021	0.000000	0.000000	-1808.78	174.88
3	GUIDE	114434008	8.76	20397	-0.122	-0.146	0.095	0.158	185.534773	7.569663	-176.08	-2199.58
4	GUIDE	37751032	10.10	20387	0.089	-0.036	0.129	0.210	186.355124	7.277238	-128.44	912.07
5	GUIDE	114565080	10.16	20365	-0.243	0.050	0.155	0.252	186.537681	7.759404	-1982.11	964.45
6	GUIDE	37751880	9.65	20382	0.135	0.042	0.101	0.163	185.771871	6.844190	2021.80	-553.66
7	GUIDE	37749592	10.26	20381	0.142	0.085	0.157	0.257	186.177253	6.631115	2278.20	1065.75

## 2.4 Star Slots

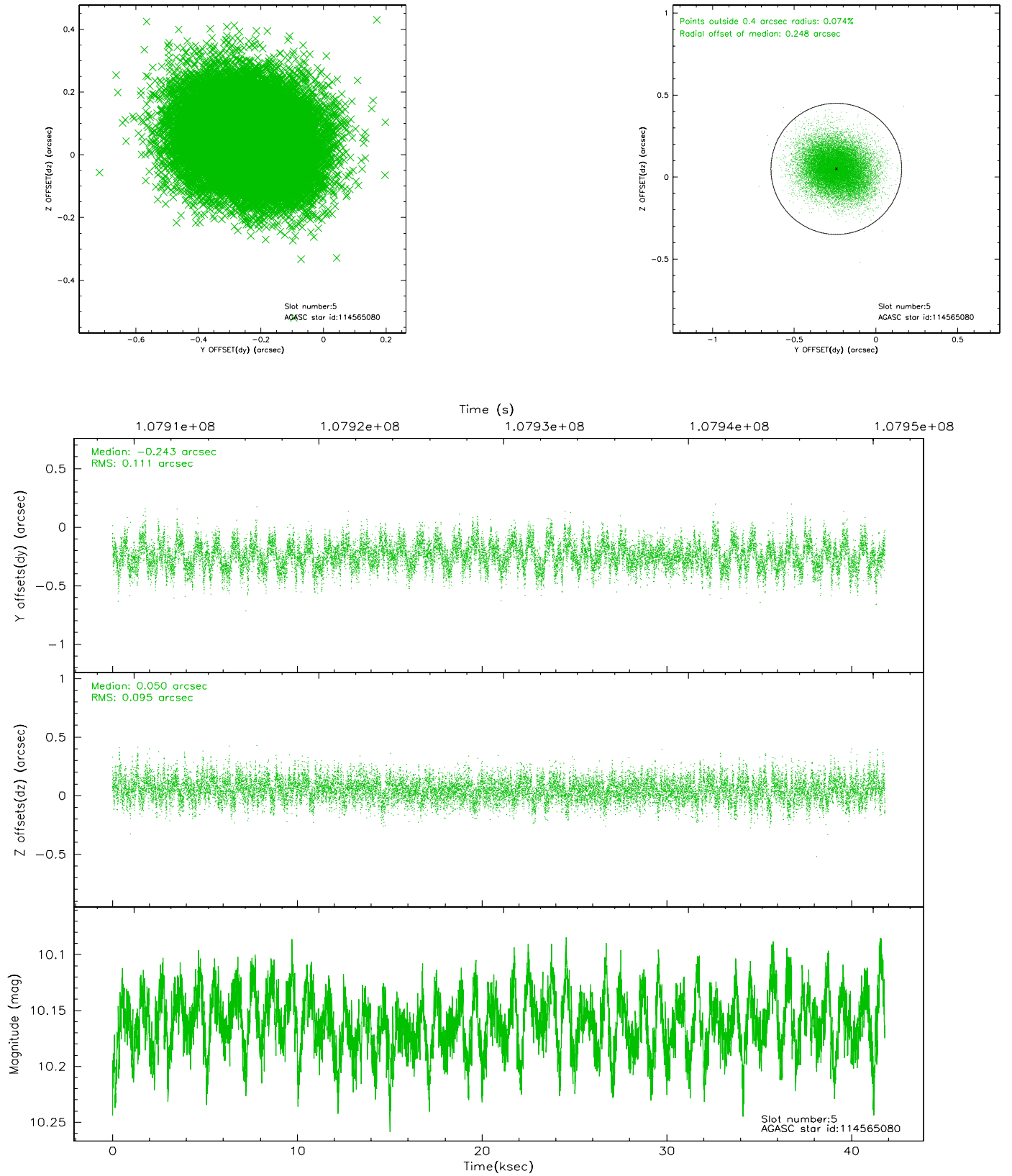
### 2.4.1 Slot 3



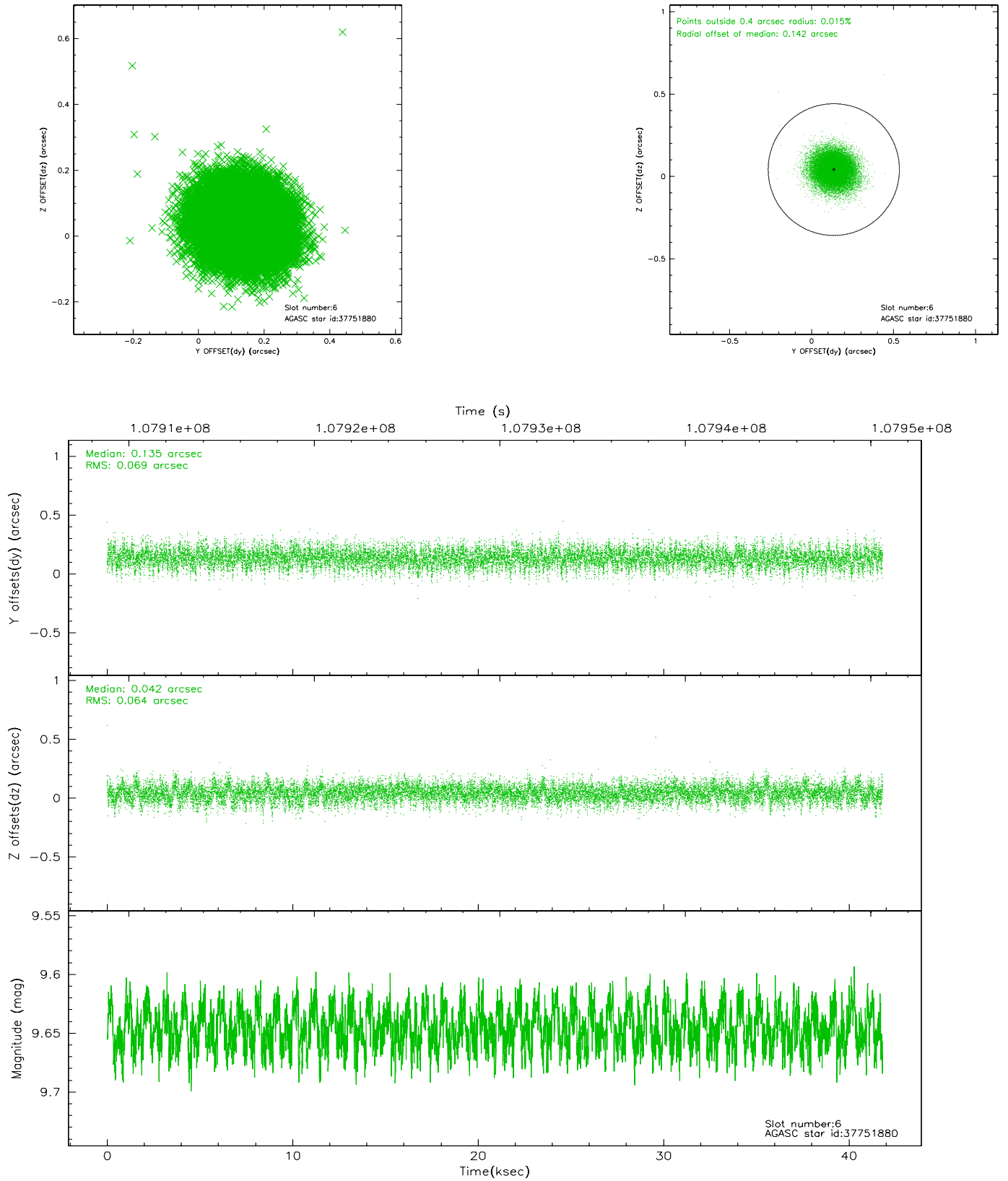
## 2.4.2 Slot 4



### 2.4.3 Slot 5

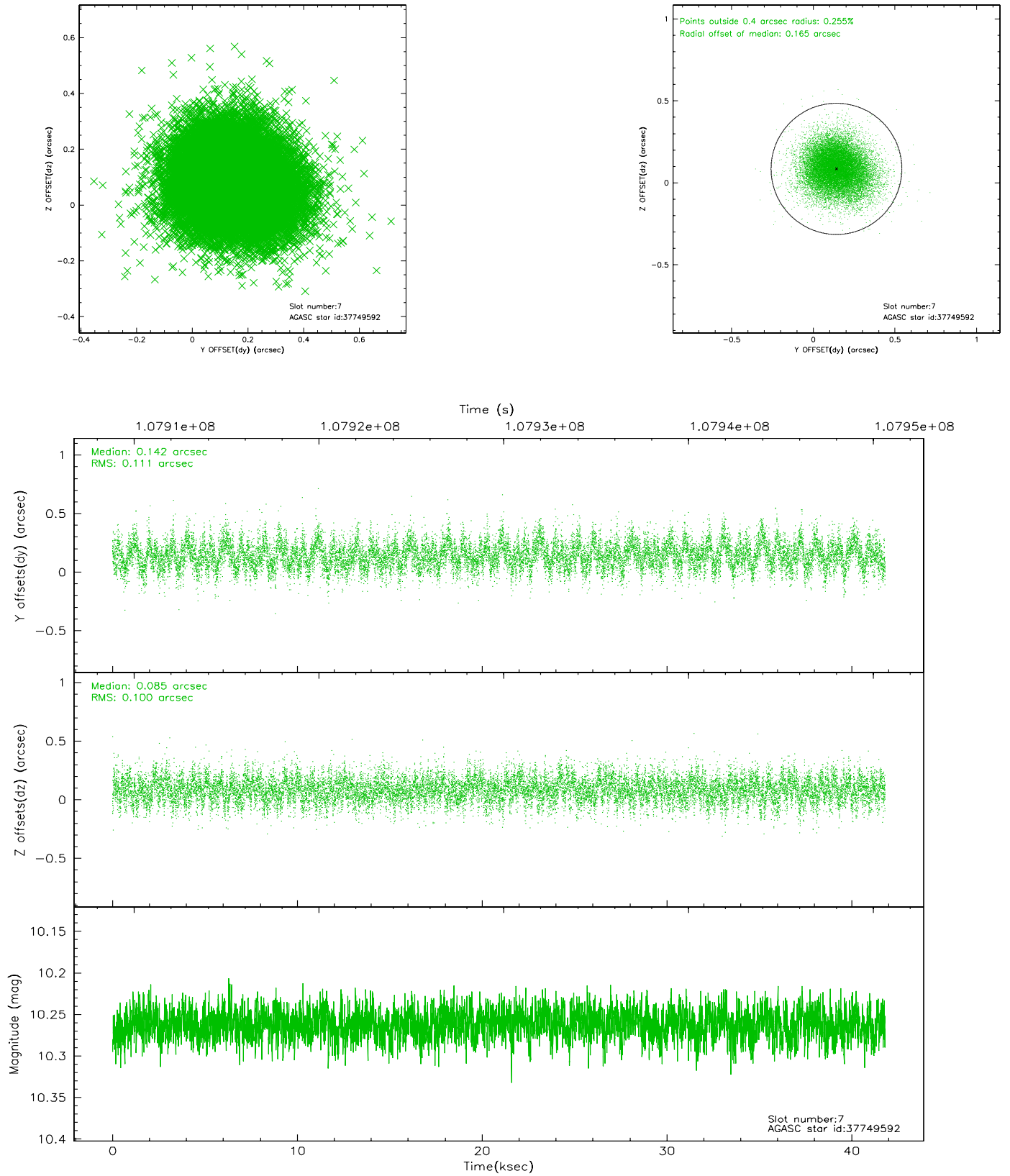


## 2.4.4 Slot 6



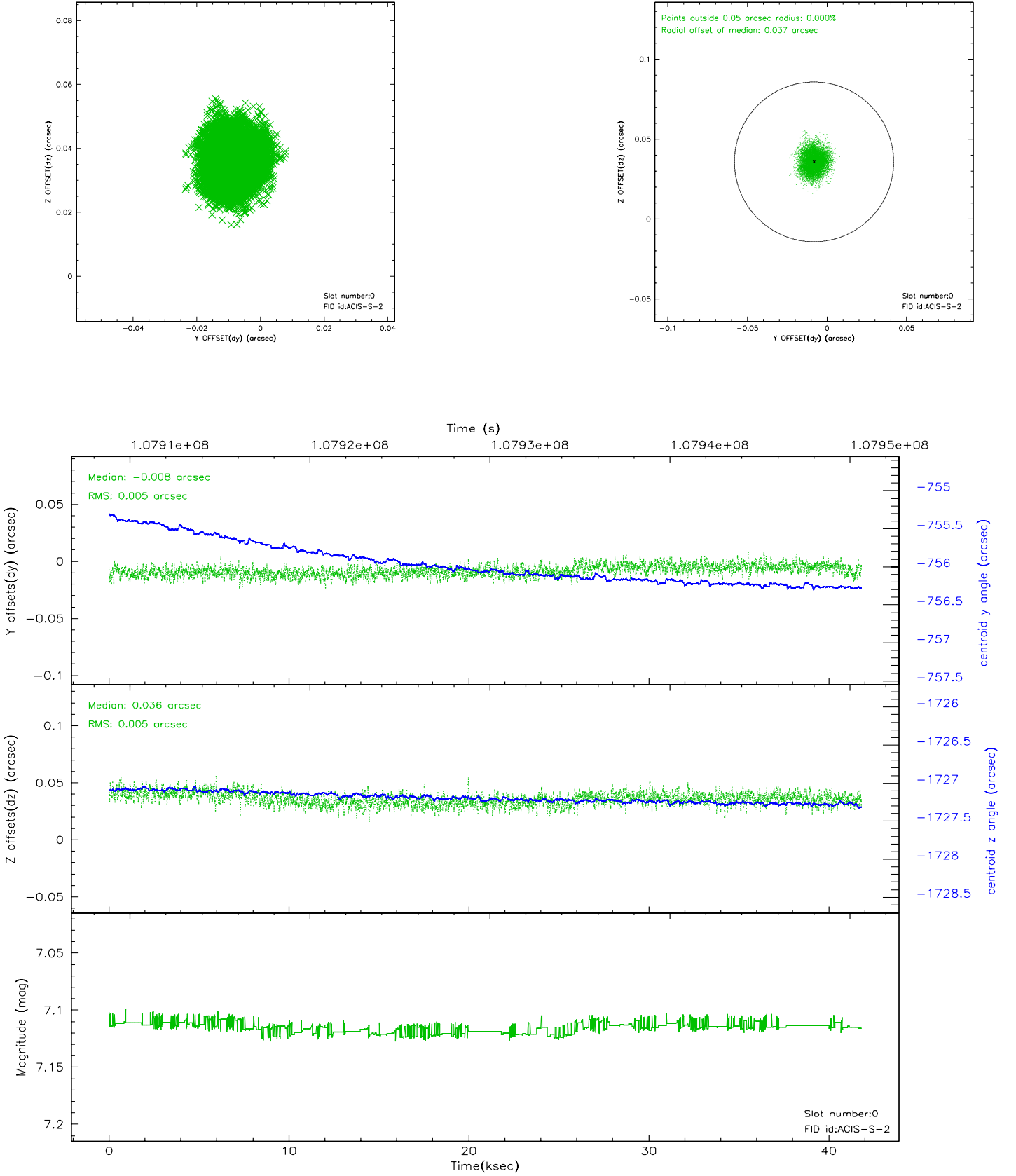


## 2.4.5 Slot 7

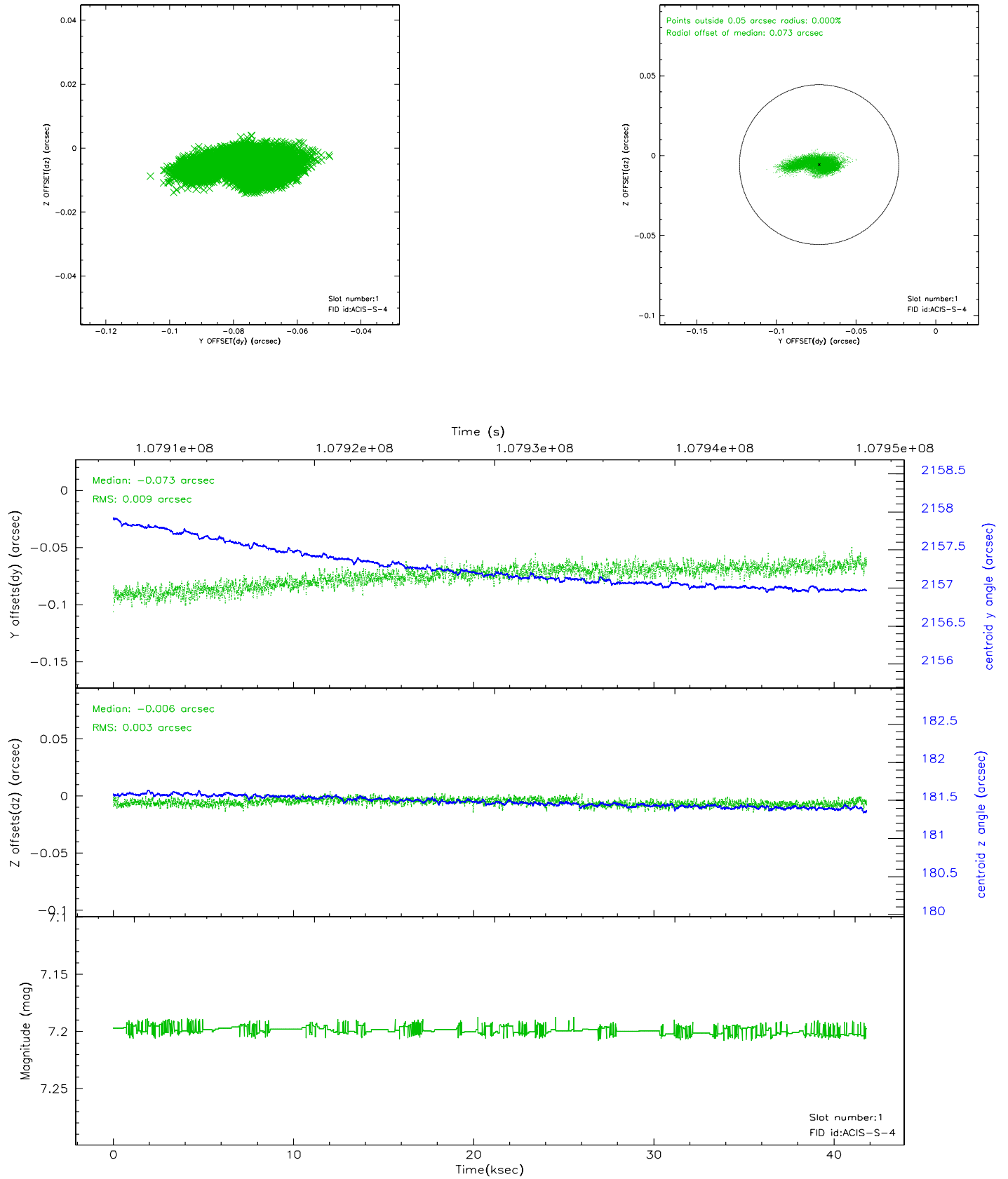


## 2.5 FID Slots

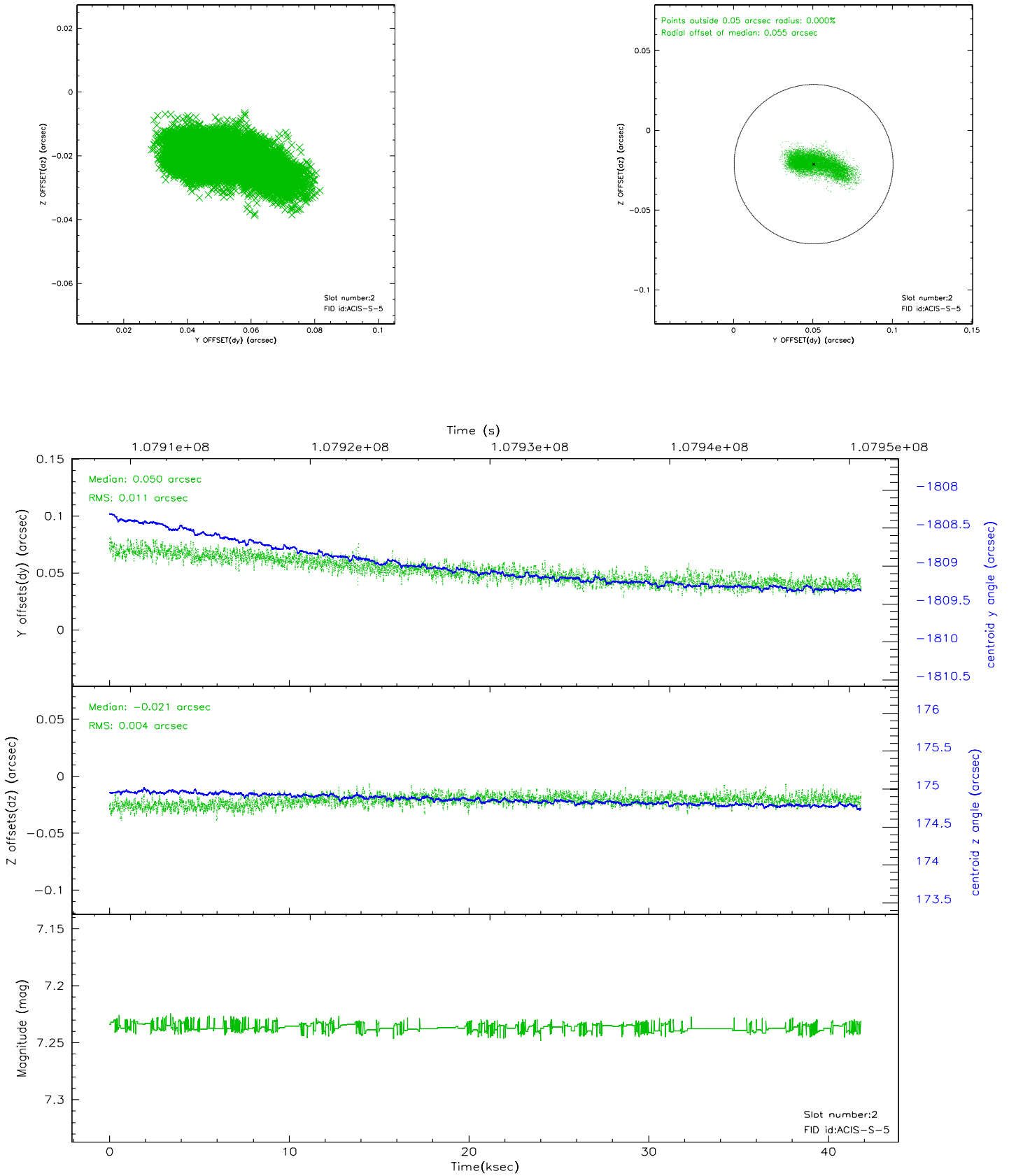
### 2.5.1 Slot 0



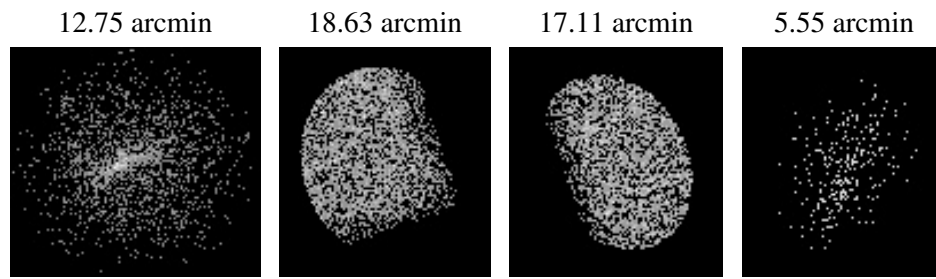
## 2.5.2 Slot 1



### 2.5.3 Slot 2



### 3 Point Sources



## A Summary

### A.1 Status

V&V Scientist	Jen Lauer
V&V Date (YYYY-MM-DD)	2006.11.27
V&V Edition	1
V&V Disposition and Status	OK
V&V Charge Time	41

### A.2 Comments