

V&V Reference Report

L2 ASCDS Version : 7.6.10

Observation 1585 - L2 Version 001
Chandra X-Ray Center

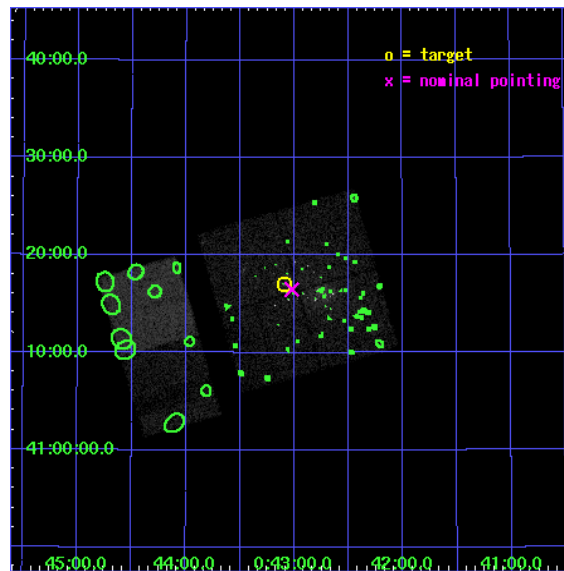
L2 Processing Date : Jan 12 2007

Contents

1	Front	2
2	OBI	3
2.1	OBI	3
2.1.1	Images	3
2.1.2	Bias	3
2.1.3	Parameters	4
2.1.4	Events	4
2.2	Compared Parameters	5
2.3	Aspect	6
2.4	Star Slots	9
2.4.1	Slot 3	9
2.4.2	Slot 4	10
2.4.3	Slot 5	11
2.4.4	Slot 6	12
2.4.5	Slot 7	13
2.5	FID Slots	14
2.5.1	Slot 0	14
2.5.2	Slot 1	15
2.5.3	Slot 2	16
3	Point Sources	17
A	Summary	18
A.1	Status	18
A.2	Comments	18

1 Front

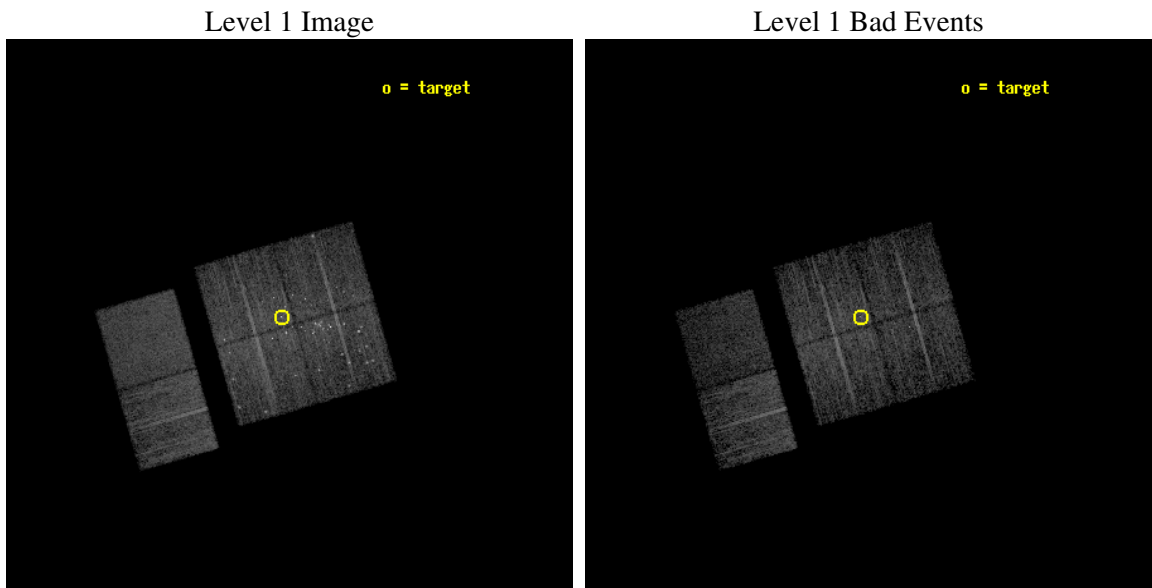
seq_num	600142
obs_id	1585
title	MONITORING THE M31 NUCLEAR REGION
observer	Dr Stephen Murray
object	M31 NUCLEUS
dtcycle	0
cycle	P
ra_targ	10.773125
dec_targ	41.28425
ra_nom	10.755534781342
dec_nom	41.274973921231
roll_nom	253.99822010957
revision	2
ontime	4947.2000046074
livetime	4884.5555793029
ontime0	4947.1438688189
ontime1	4947.1849088222
ontime2	4947.2000046074
ontime3	4947.2000046074
ontime6	4947.2000046074
ontime7	4947.2000046074
l2events	64450



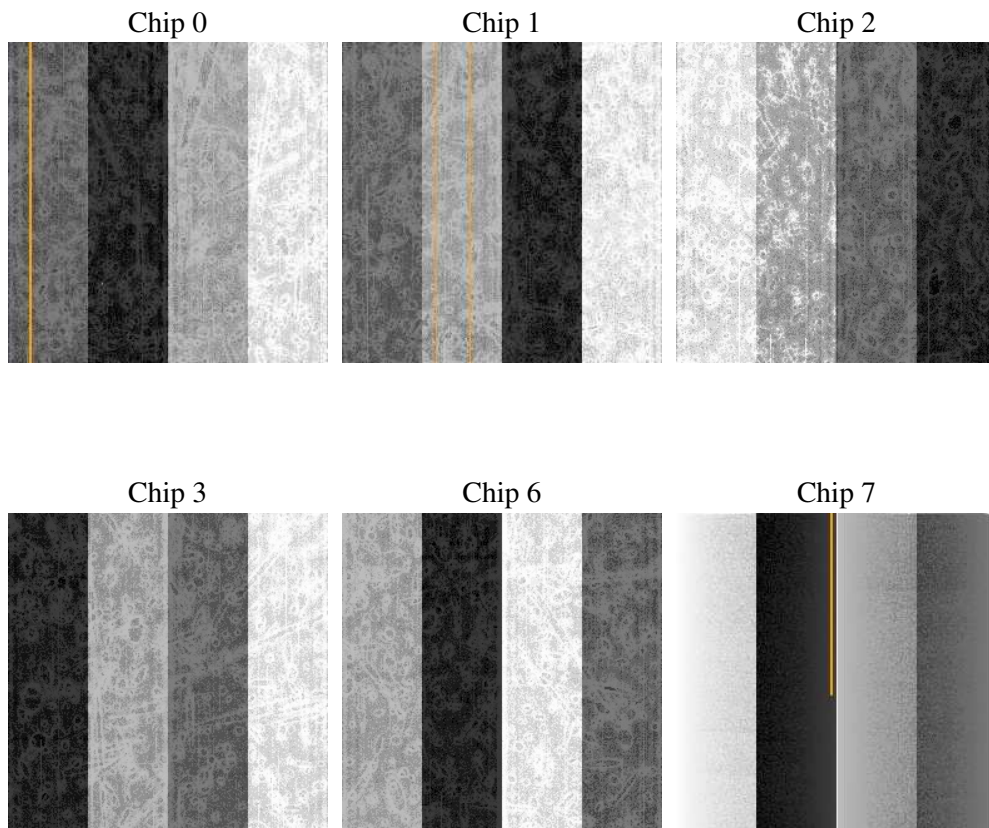
2 OBI

2.1 OBI

2.1.1 Images



2.1.2 Bias



2.1.3 Parameters

obi_num	3
ascdsver	7.6.10
caldbver	3.3.0
date	2007-01-12T09:21:33
revision	2

sched_exp_time	5000.000000
ontime	4947.2000046074
ontime0	4947.1438688189
ontime1	4947.1849088222
ontime2	4947.2000046074
ontime3	4947.2000046074
ontime6	4947.2000046074
ontime7	4947.2000046074
l1events	296666

2.1.4 Events

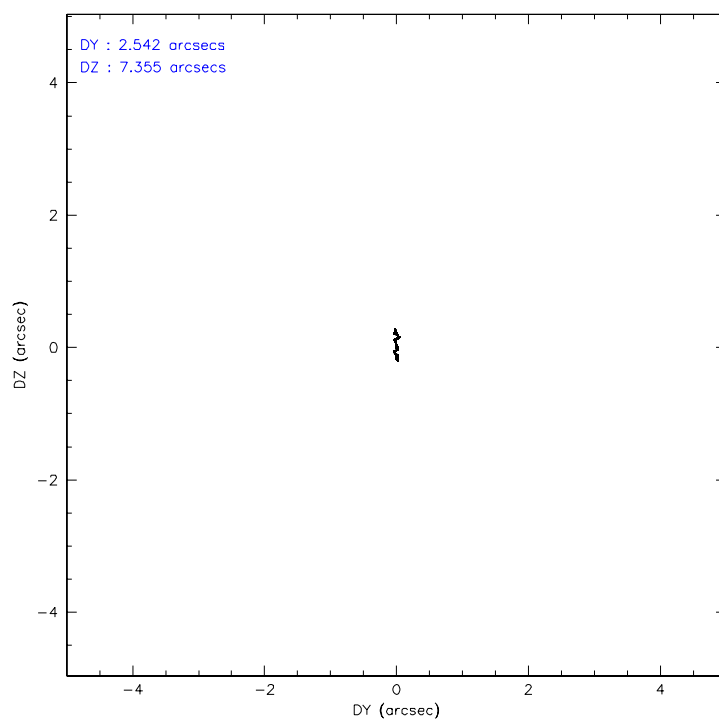
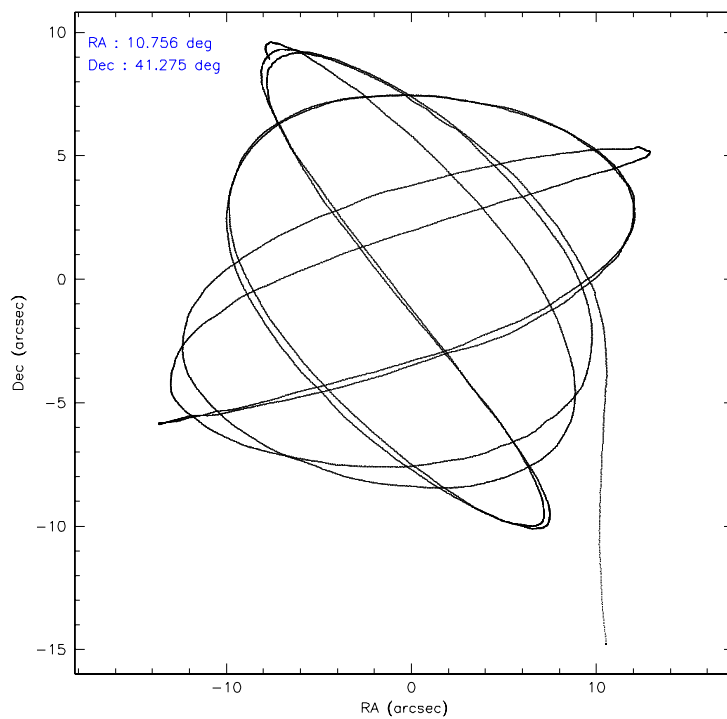
	ccd 0	ccd 1	ccd 2	ccd 3	ccd 6	ccd 7
level 1 events	52379	42735	53741	50674	50336	46801
rejected events	34479	33528	43146	41763	43057	26400
rejected %	65%	78%	80%	82%	85%	56%

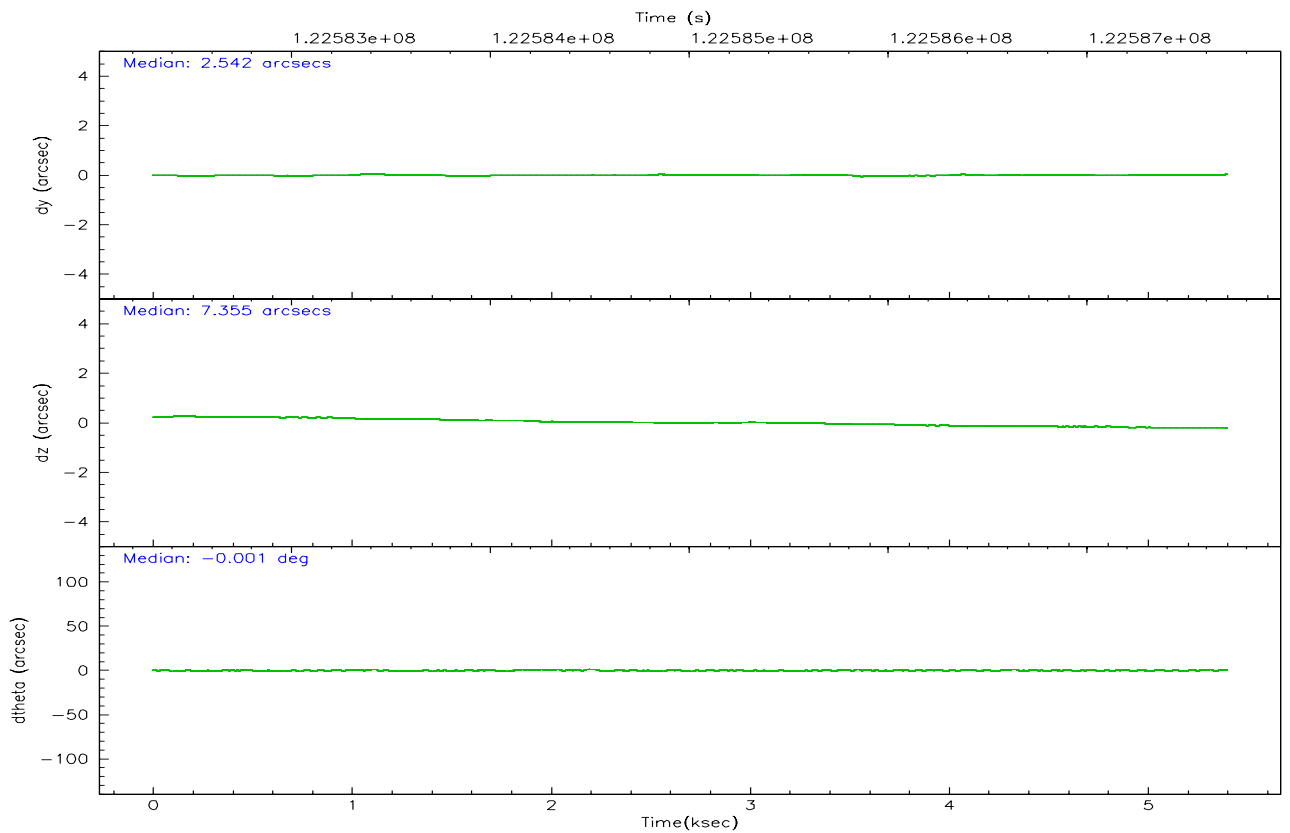
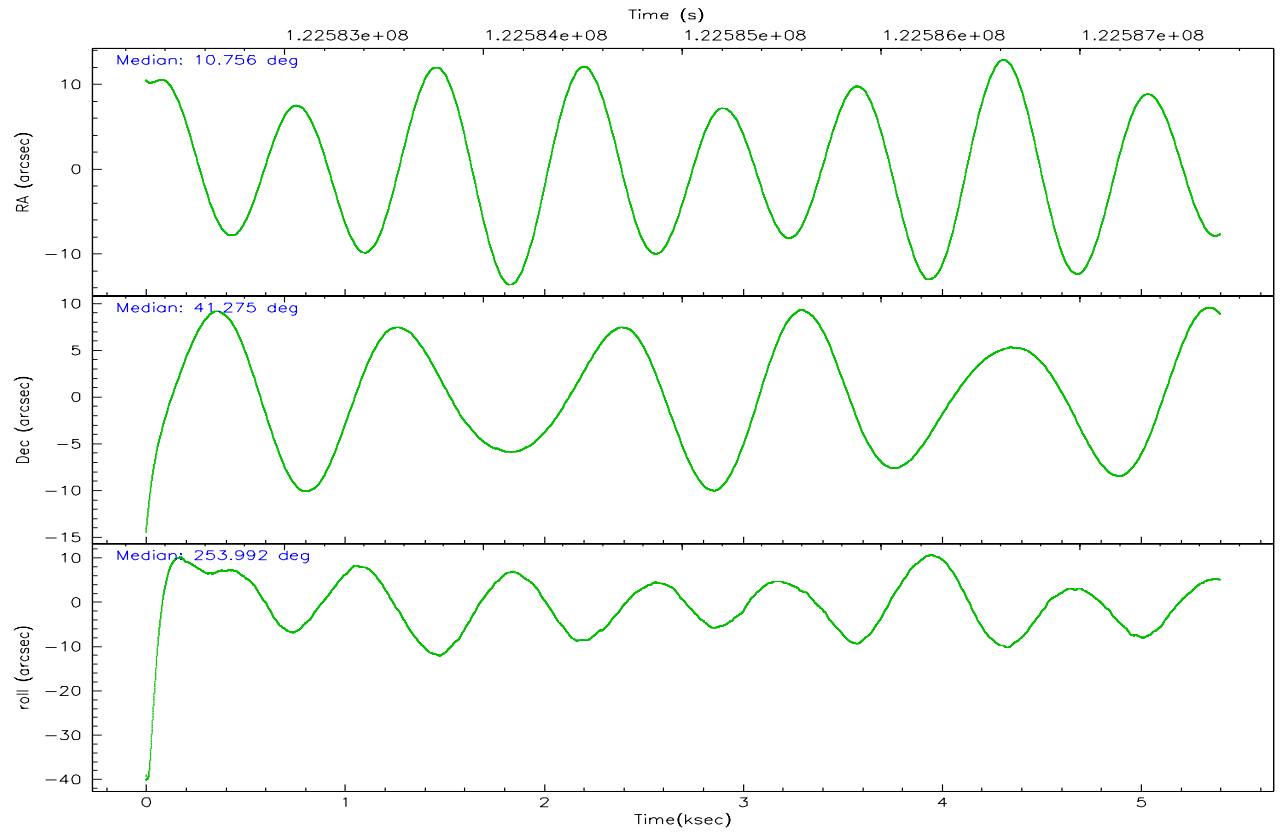
	ccd 0	ccd 1	ccd 2	ccd 3	ccd 6	ccd 7
grade 0 events	11408	4545	5478	4307	2940	2055
	21%	10%	10%	8%	5%	4%
grade 1 events	219	52	57	108	31	70
	0%	0%	0%	0%	0%	0%
grade 2 events	3389	2123	2518	2070	2131	4258
	6%	4%	4%	4%	4%	9%
grade 3 events	723	524	504	481	435	1874
	1%	1%	0%	0%	0%	4%
grade 4 events	805	494	657	522	421	1899
	1%	1%	1%	1%	0%	4%
grade 5 events	1365	1247	1173	1313	1458	4290
	2%	2%	2%	2%	2%	9%
grade 6 events	1591	1526	1443	1538	1360	10323
	3%	3%	2%	3%	2%	22%
grade 7 events	32879	32224	41911	40335	41560	22032
	62%	75%	77%	79%	82%	47%

2.2 Compared Parameters

Parameter	Planned	Actual	Parameter	Planned	Actual
Instrument	ACIS	ACIS	Obspar format version number	6	6
Detector	ACIS-012367	ACIS-012367	Obspar file type	PREDICTED	ACTUAL
Grating	NONE	NONE	Obspar update status	NONE	UPDATED
Data mode	FAINT	FAINT	Number of optional ACIS chips dropped	0	0
Observation mode	POINTING	POINTING	On-chip summing requested	N	N
Pointing RA	10.746538	10.75553478134151	Subarray requested	NONE	NONE
Pointing Dec	41.301509	41.2749739212314	Alternating exposures requested	N	N
Pointing Roll	253.795582	253.9982201095662	Primary exposure time	0.000000	3.2
Window start time	121824064.184000	121824064.184000			
Window stop time	123465664.184000	123465664.184000			
SIM focus pos (mm)	-0.782348	-0.7809083437167272			
SIM defocus (mm)	0	0.001439871863259334			
SIM translation stage pos (mm)	-233.592463	-233.5874344608287			
SIM translation stage offset (mm)	0	-0.005018542100998502			
Observation start time	122582701.184000	122581615.25321			
Observation start date	2001-11-19T18:43:57	2001-11-19T18:26:55			
Observation end time	122587701.184000	122587905.67846			
Observation end date	2001-11-19T20:07:17	2001-11-19T20:11:45			
Read mode	TIMED	TIMED			

2.3 Aspect



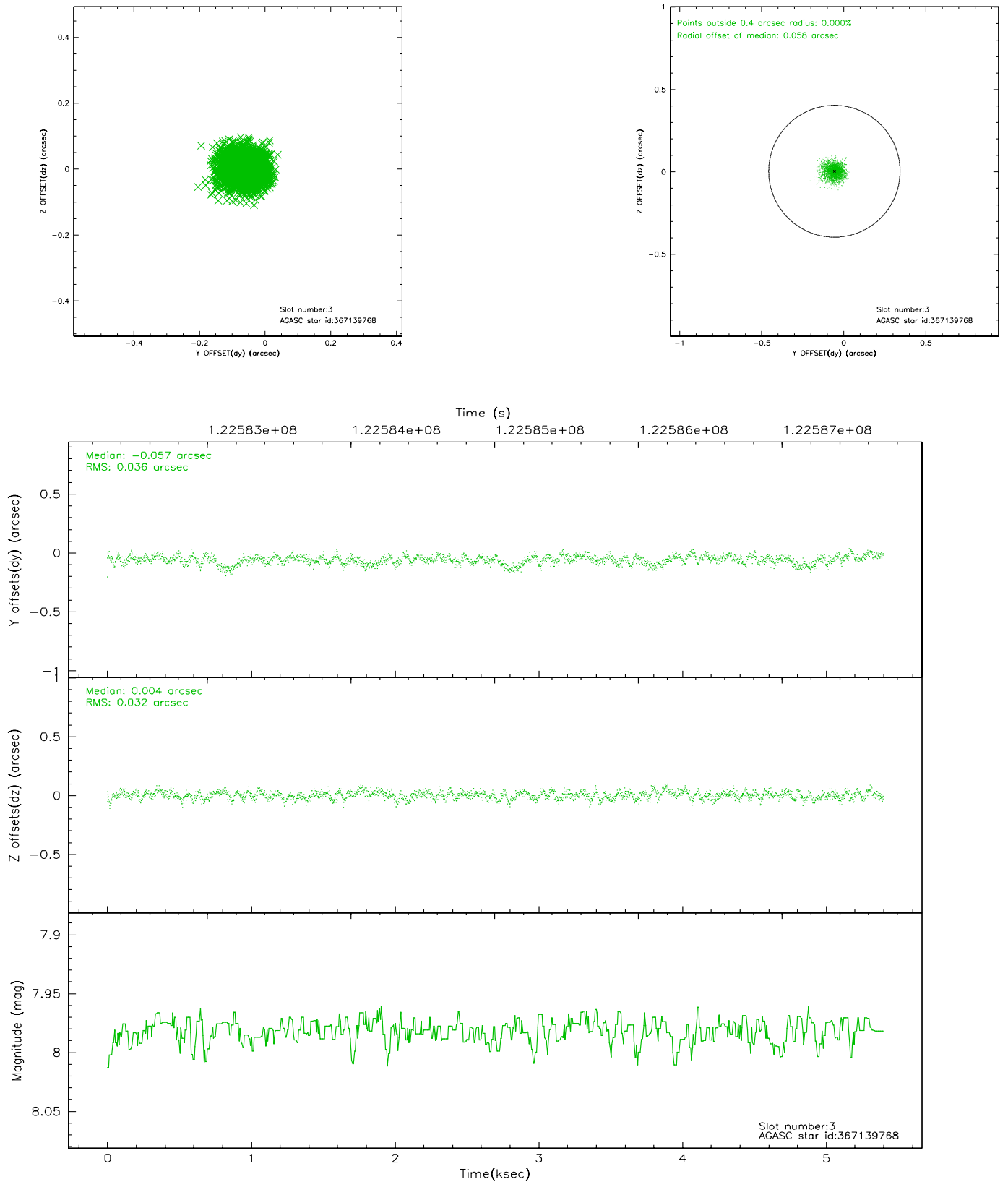


Slot Statistics

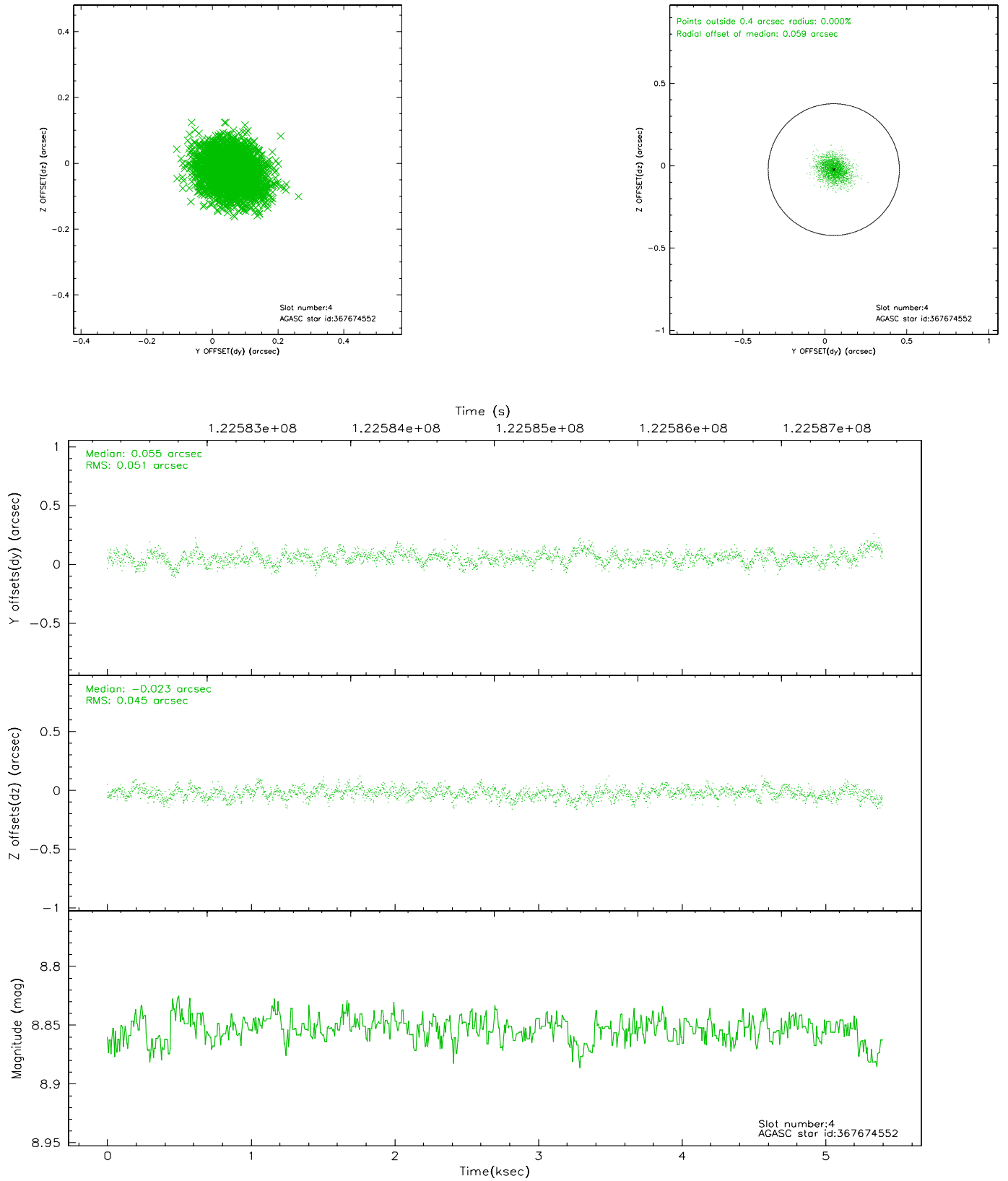
slot	status	id	mag	n_pts	med_dy	med_dz	dr1	dr2	ra	dec	mean_y	mean_z
0	FID	ACIS-I-1	7.25	1316	-0.033	0.064	0.011	0.019	0.000000	0.000000	937.21	-830.73
1	FID	ACIS-I-5	7.23	1316	-0.002	0.039	0.006	0.010	0.000000	0.000000	-1810.20	1066.24
2	FID	ACIS-I-6	7.26	1316	-0.056	-0.034	0.009	0.014	0.000000	0.000000	401.58	1711.89
3	GUIDE	367139768	7.98	2633	-0.057	0.004	0.051	0.084	11.069715	40.685175	1883.84	1465.92
4	GUIDE	367674552	8.85	2632	0.055	-0.023	0.072	0.117	11.016238	41.570845	-1133.03	426.78
5	GUIDE	367146616	8.86	2634	0.027	0.008	0.078	0.120	11.418645	41.190163	-129.46	1858.22
6	GUIDE	367671800	9.41	2631	-0.031	0.016	0.080	0.133	10.554735	41.964935	-2149.56	-1159.53
7	GUIDE	367665472	9.48	2626	0.013	-0.002	0.104	0.173	10.241611	41.730843	-1108.95	-1735.96

2.4 Star Slots

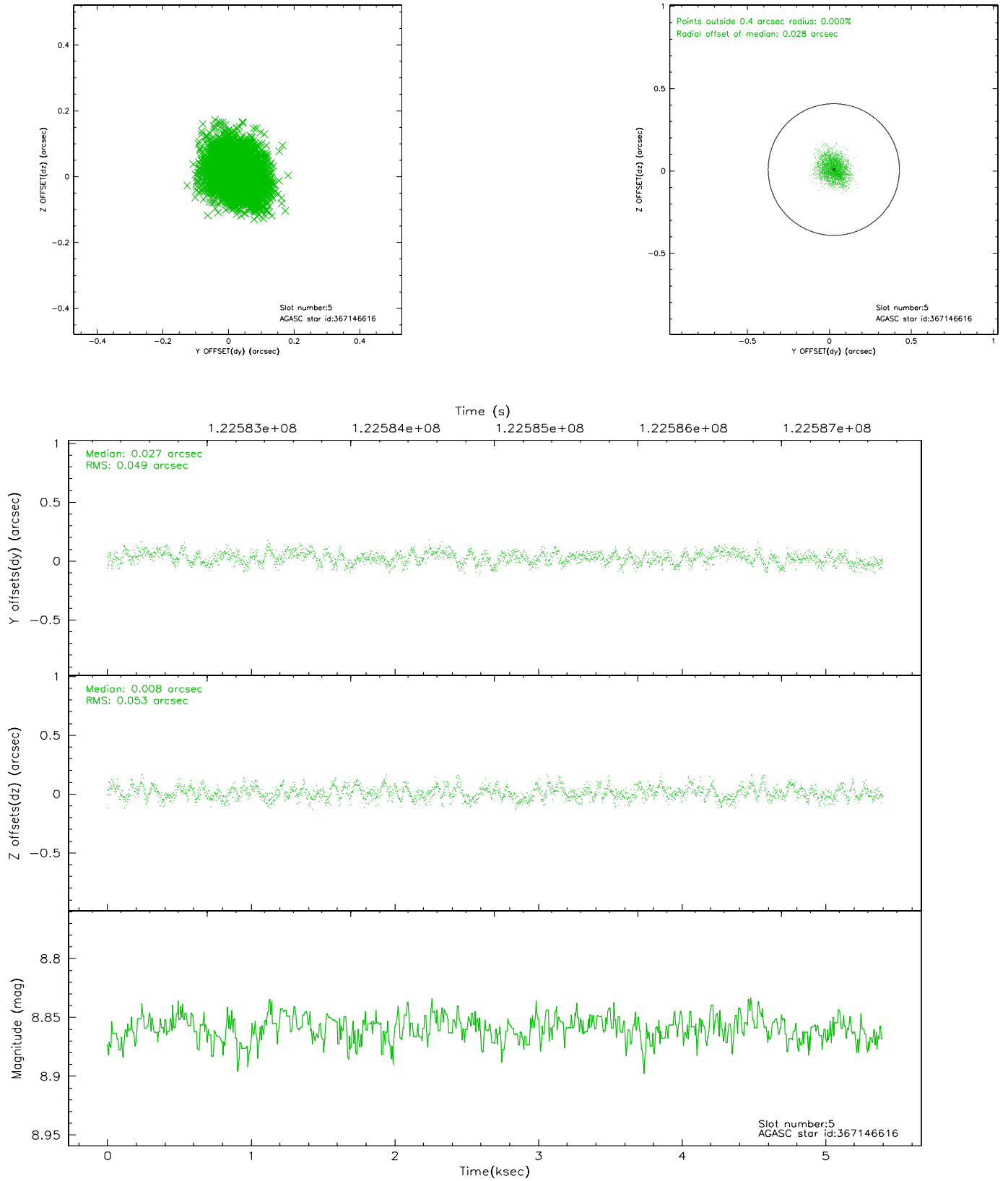
2.4.1 Slot 3



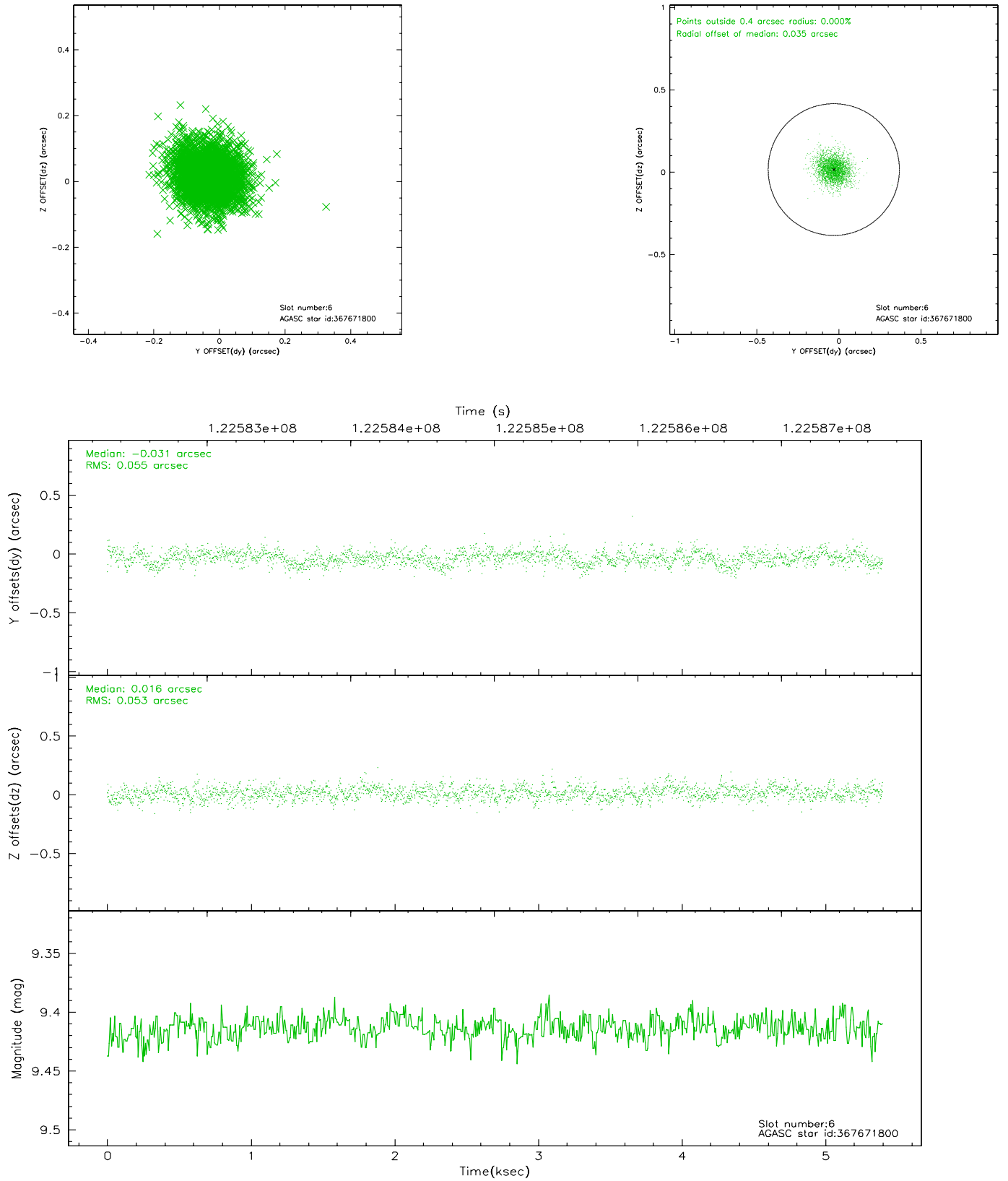
2.4.2 Slot 4



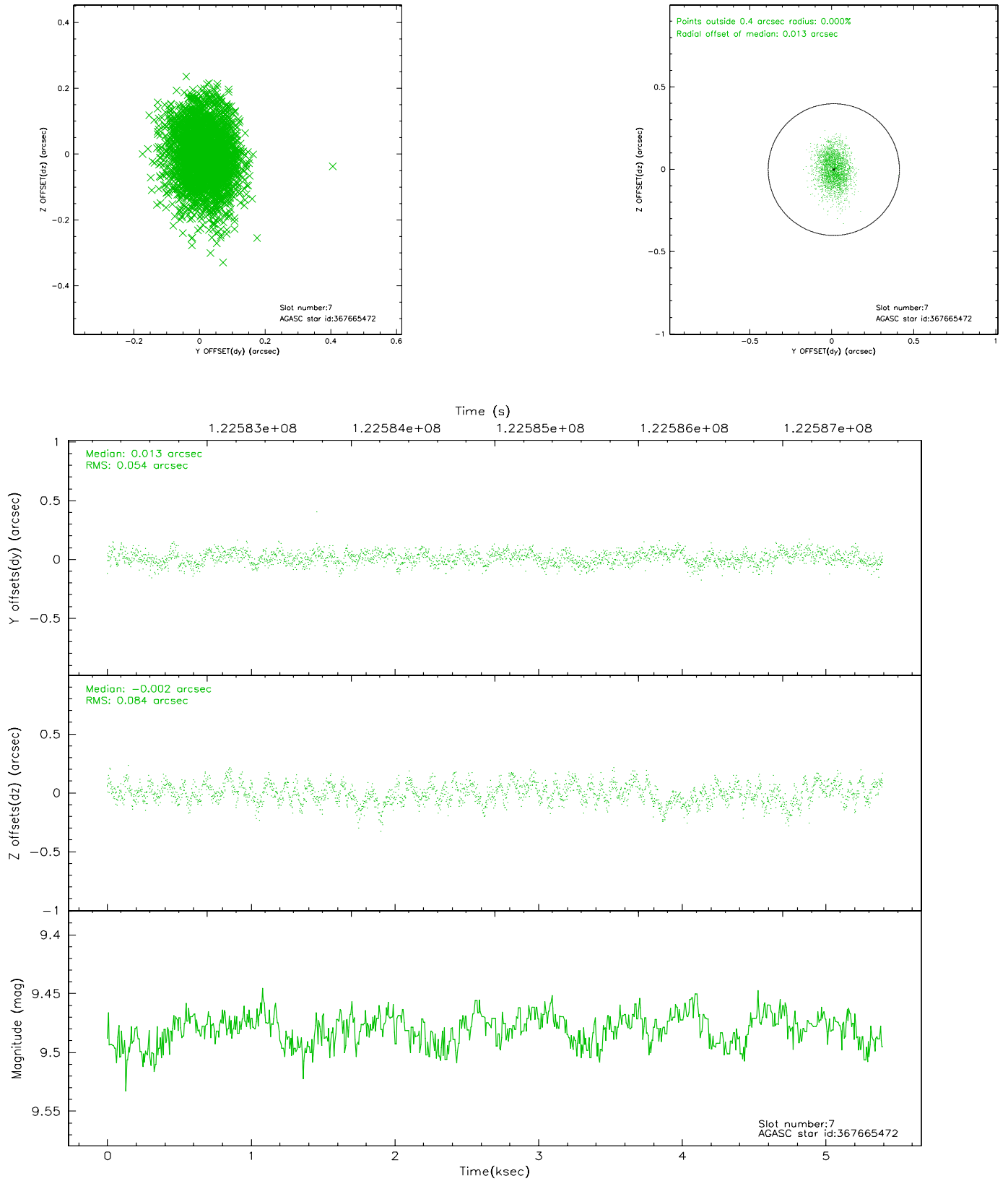
2.4.3 Slot 5



2.4.4 Slot 6

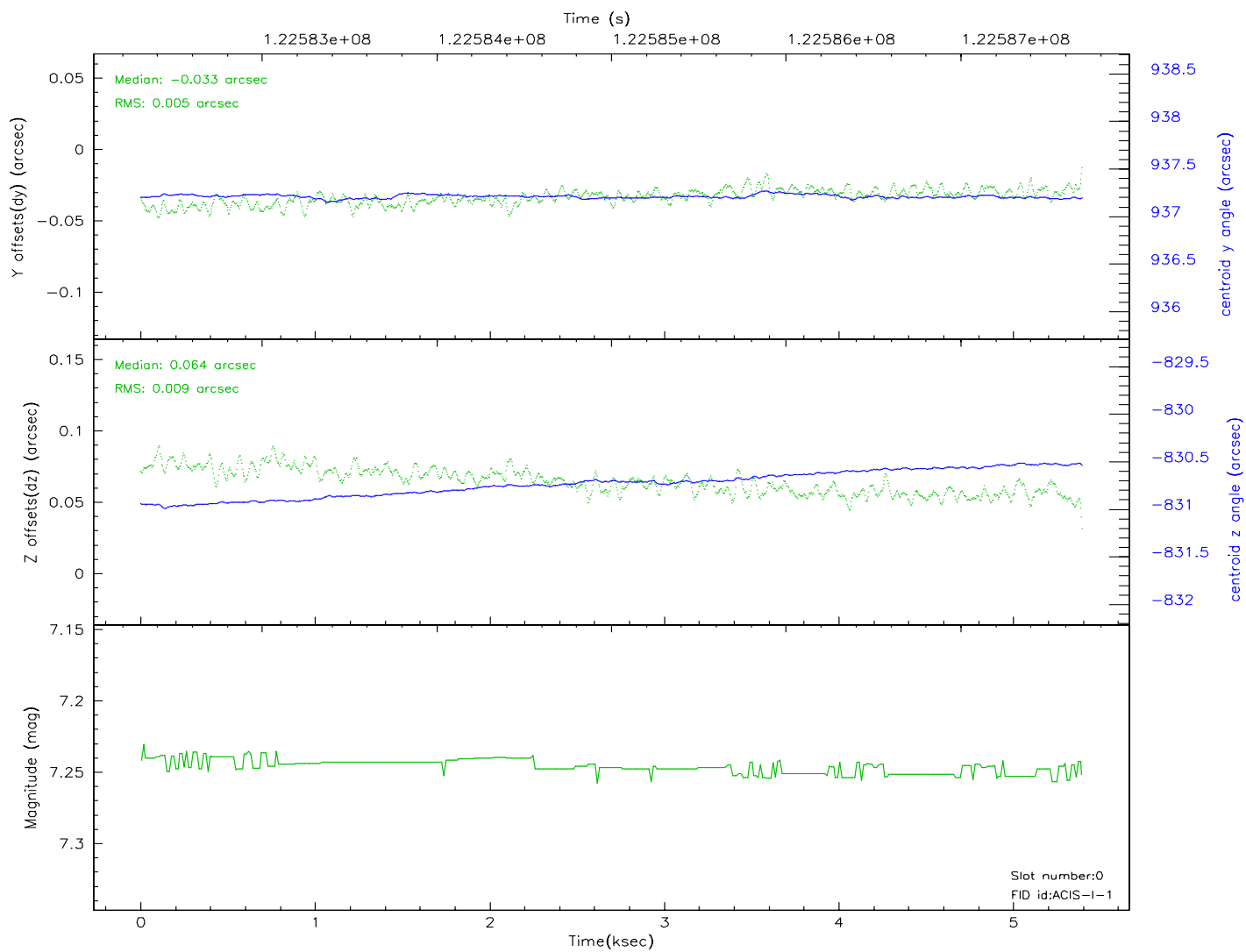
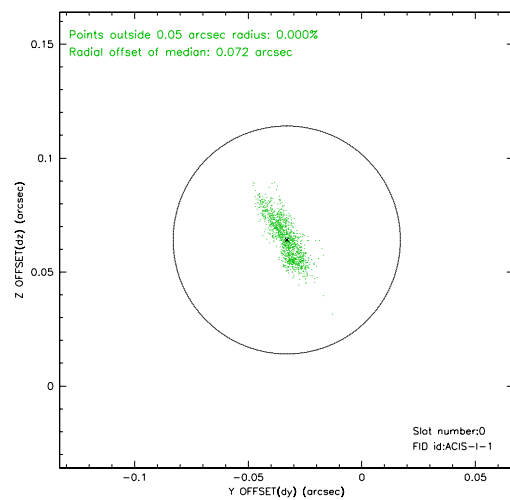
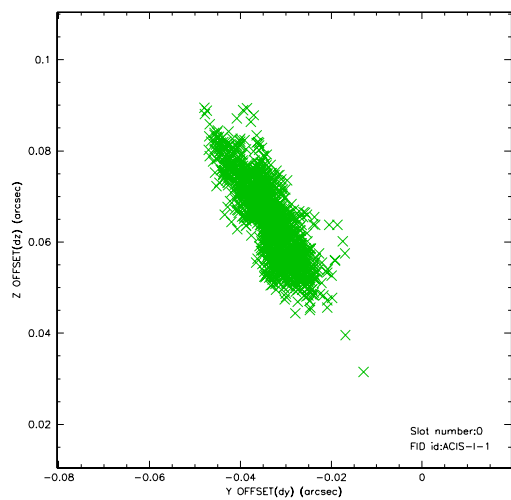


2.4.5 Slot 7

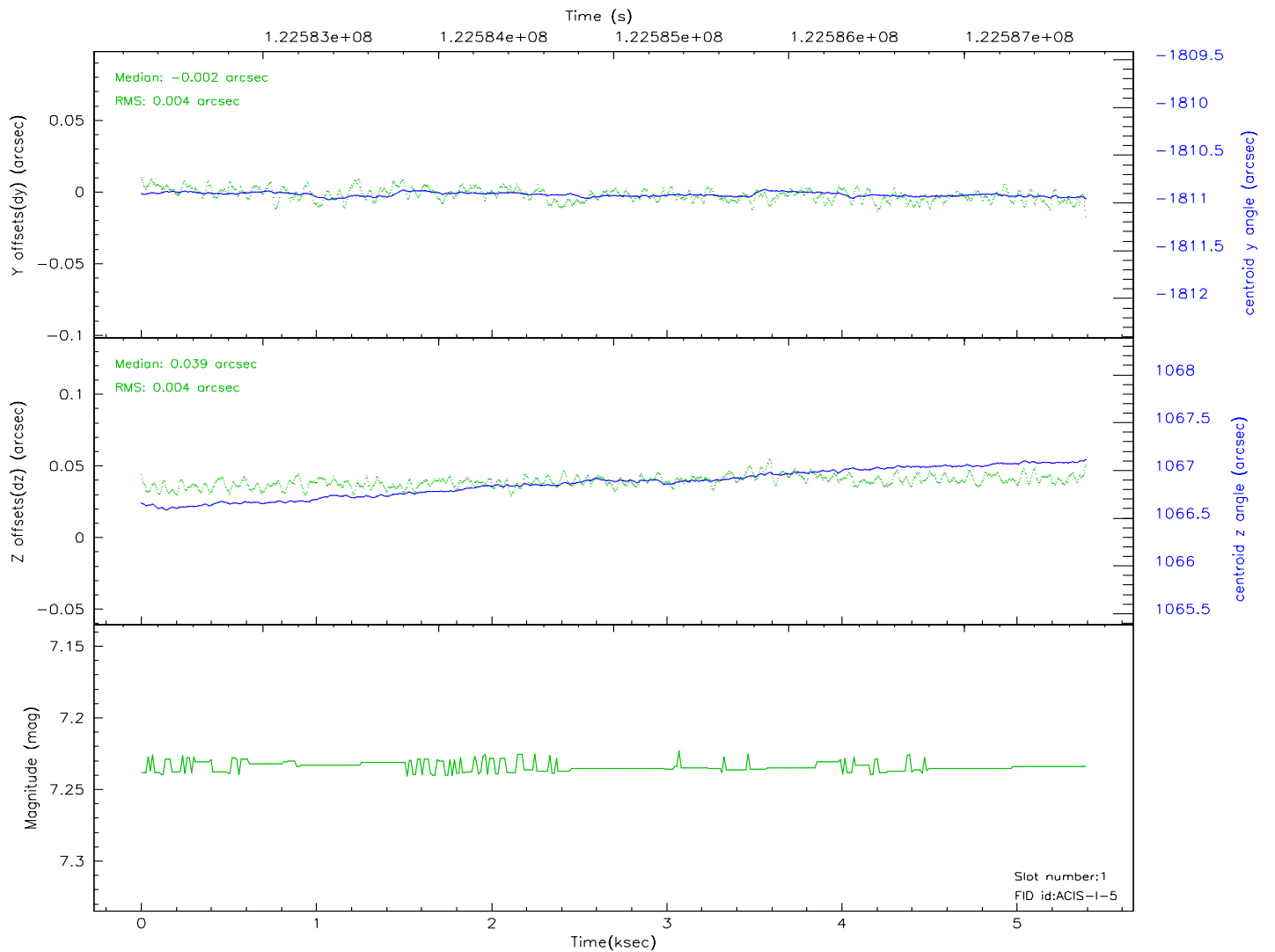
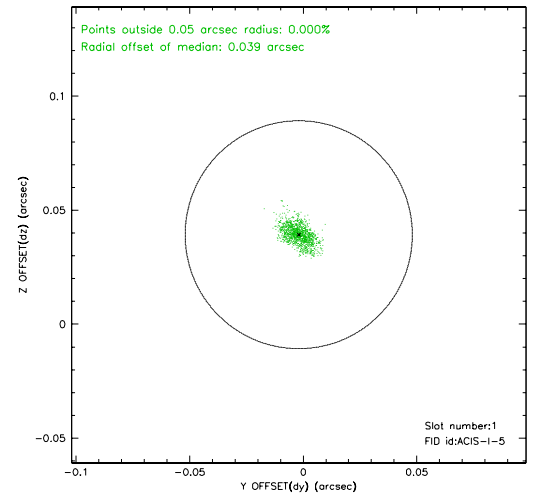
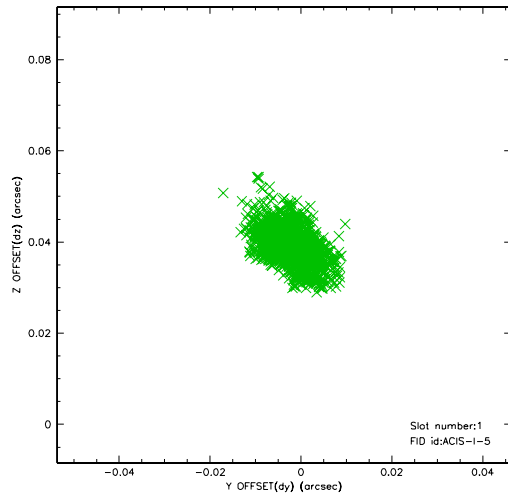


2.5 FID Slots

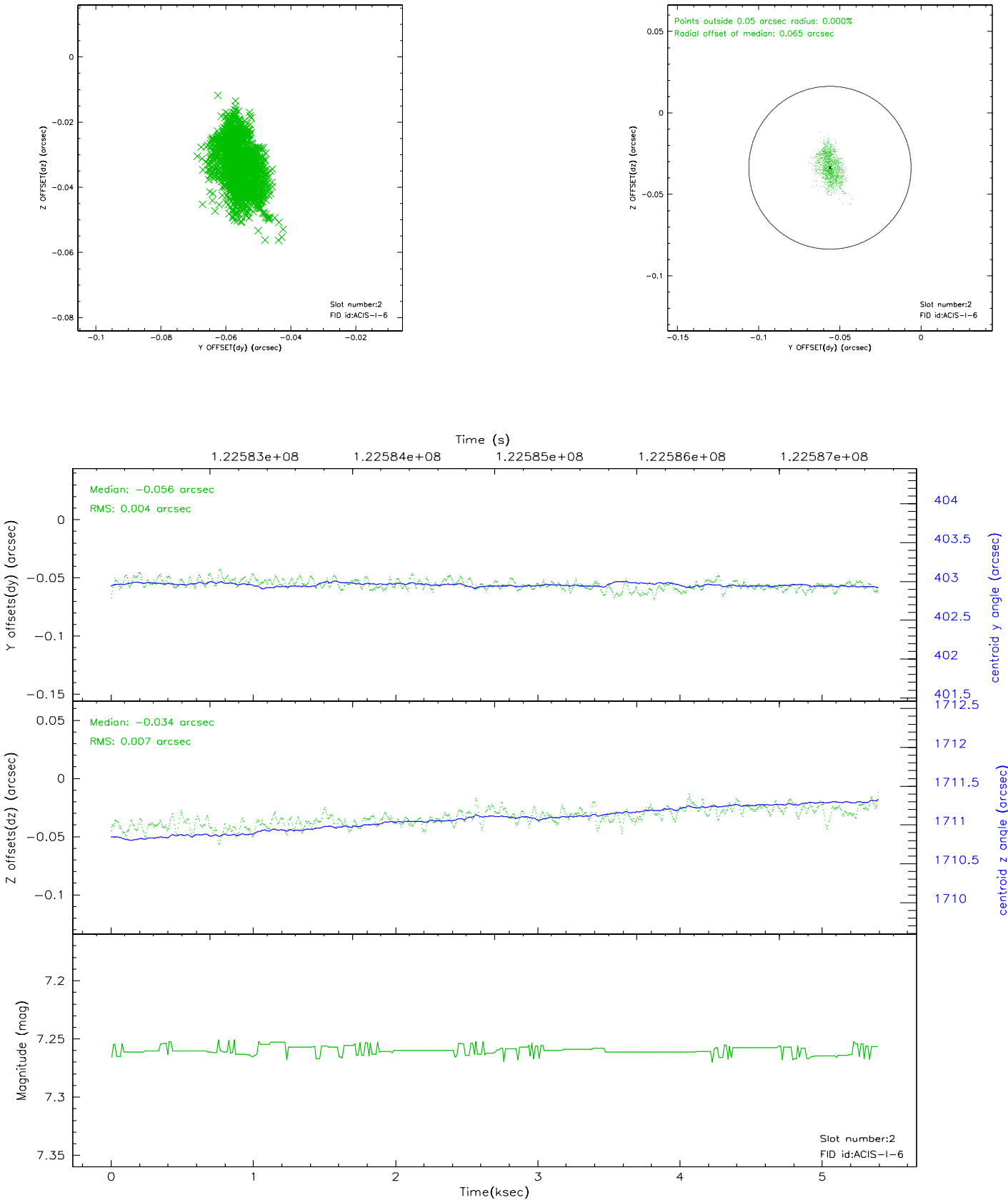
2.5.1 Slot 0



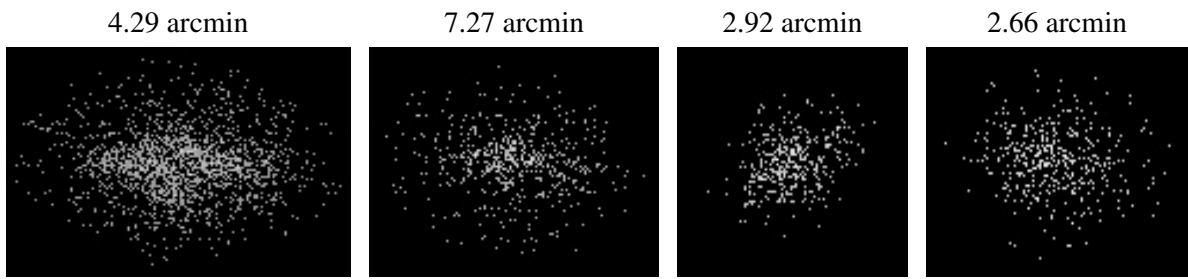
2.5.2 Slot 1



2.5.3 Slot 2



3 Point Sources



A Summary

A.1 Status

V&V Scientist	Beth Sundheim
V&V Date (YYYY-MM-DD)	2007.01.12
V&V Edition	1
V&V Disposition and Status	OK
V&V Charge Time	4.947

A.2 Comments