

# V&V Reference Report

## L2 ASCDS Version : 7.6.10

Observation 1579 - L2 Version 001  
Chandra X-Ray Center

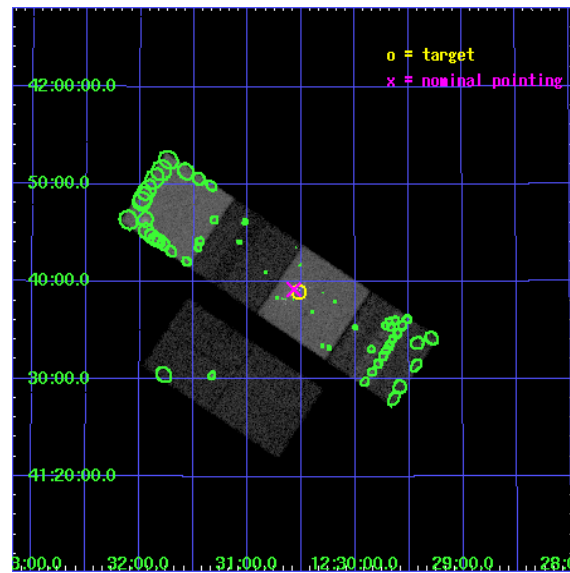
L2 Processing Date : Jun 14 2007

## Contents

<b>1</b>	<b>Front</b>	<b>2</b>
<b>2</b>	<b>OBI</b>	<b>3</b>
2.1	OBI . . . . .	3
2.1.1	Images . . . . .	3
2.1.2	Bias . . . . .	3
2.1.3	Parameters . . . . .	4
2.1.4	Events . . . . .	4
2.2	Compared Parameters . . . . .	5
2.3	Aspect . . . . .	6
2.4	Star Slots . . . . .	9
2.4.1	Slot 3 . . . . .	9
2.4.2	Slot 4 . . . . .	10
2.4.3	Slot 5 . . . . .	11
2.4.4	Slot 6 . . . . .	12
2.4.5	Slot 7 . . . . .	13
2.5	FID Slots . . . . .	14
2.5.1	Slot 0 . . . . .	14
2.5.2	Slot 1 . . . . .	15
2.5.3	Slot 2 . . . . .	16
<b>3</b>	<b>Point Sources</b>	<b>17</b>
<b>A</b>	<b>Summary</b>	<b>18</b>
A.1	Status . . . . .	18
A.2	Comments . . . . .	18

# 1 Front

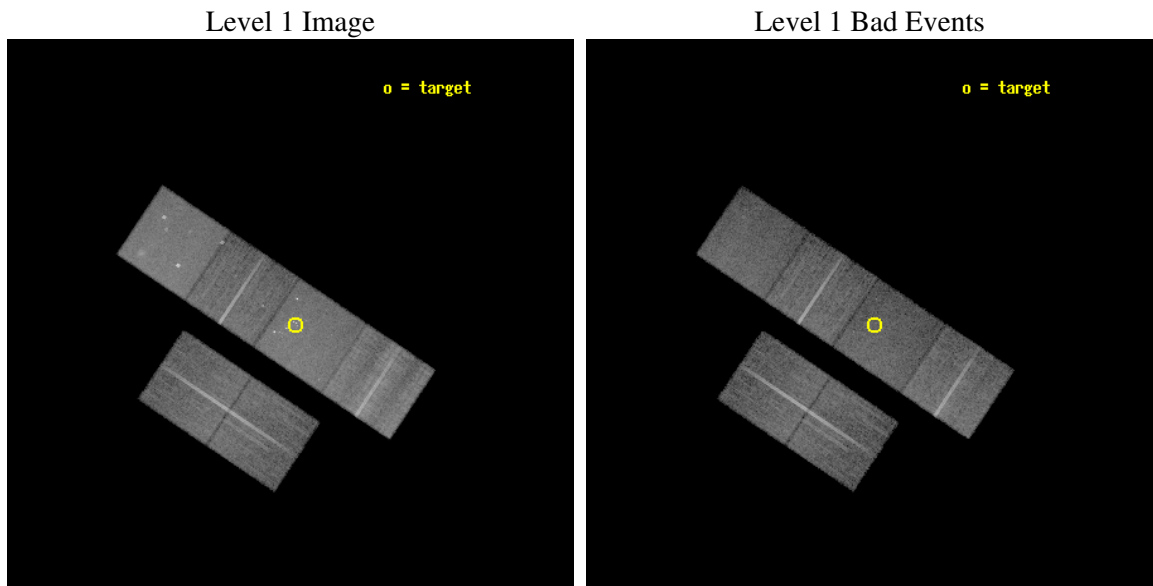
seq_num	600136
obs_id	1579
title	SUPER-LUMINOUS X-RAY SOURCES IN NEARBY GALAXIES NGC4485/4490
observer	Dr. Stephen Murray
object	NGC 4485/4490
dtcycle	0
cycle	P
ra_targ	187.63
dec_targ	41.65
ra_nom	187.64215477456
dec_nom	41.65392311869
roll_nom	33.747325516407
revision	2
ontime	19769.600018412
livetime	19519.265439155
ontime2	19769.600018412
ontime3	19769.600018412
ontime5	19769.600018412
ontime6	19766.359058172
ontime7	19769.600018412
ontime8	19769.600018412
l2events	203531



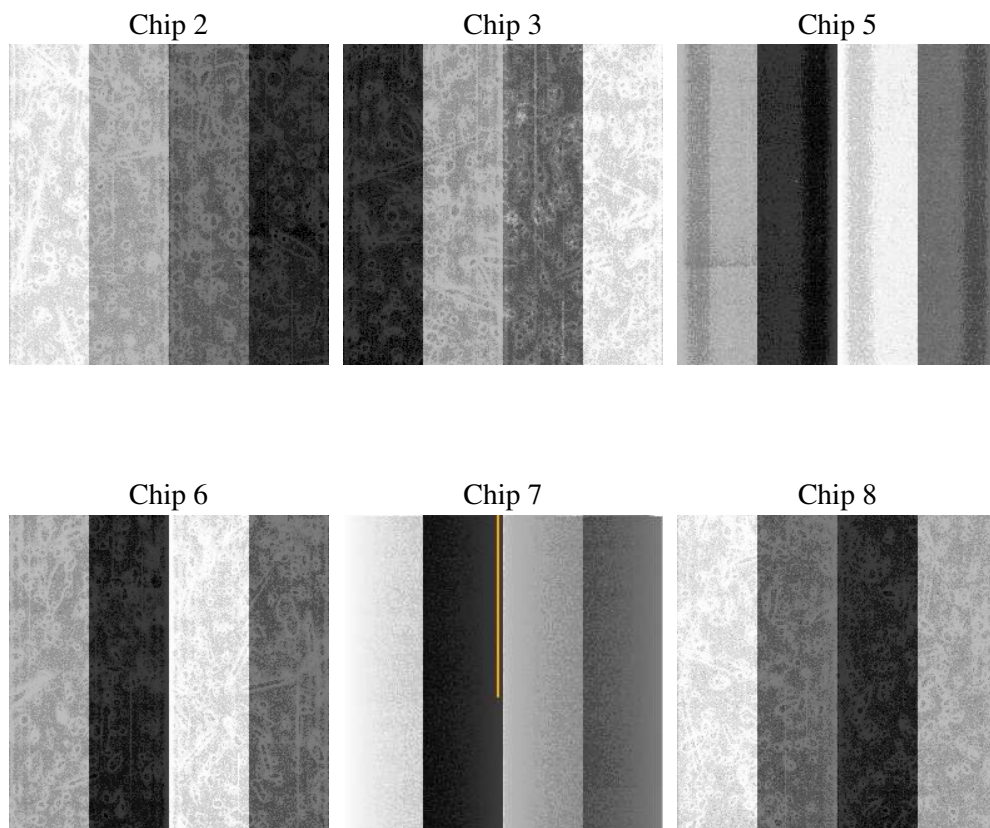
## 2 OBI

### 2.1 OBI

#### 2.1.1 Images



#### 2.1.2 Bias



### 2.1.3 Parameters

obi_num	0
ascdsver	7.6.10
caldsver	3.4.0
date	2007-06-14T10:44:16
revision	2

sched_exp_time	19816.530000
ontime	19769.600018412
ontime2	19769.600018412
ontime3	19769.600018412
ontime5	19769.600018412
ontime6	19766.359058172
ontime7	19769.600018412
ontime8	19769.600018412
l1events	873529

### 2.1.4 Events

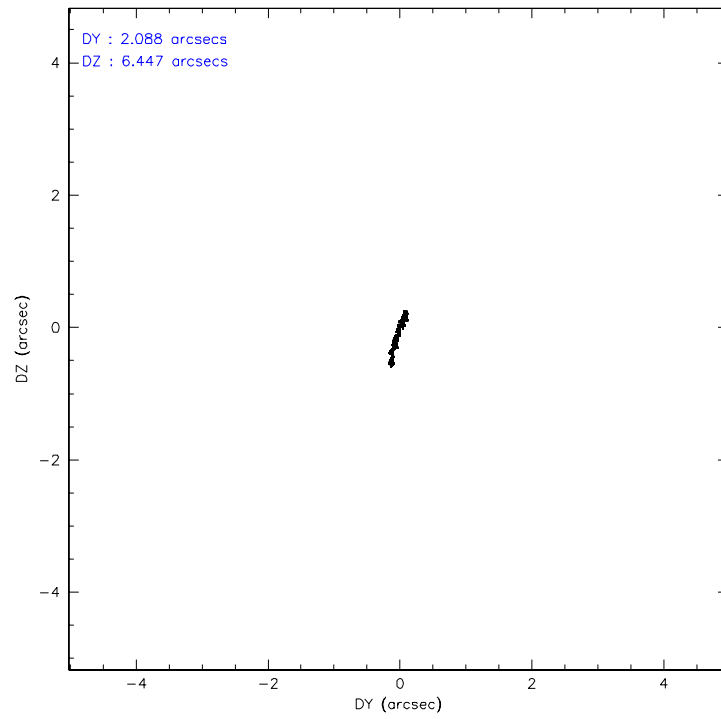
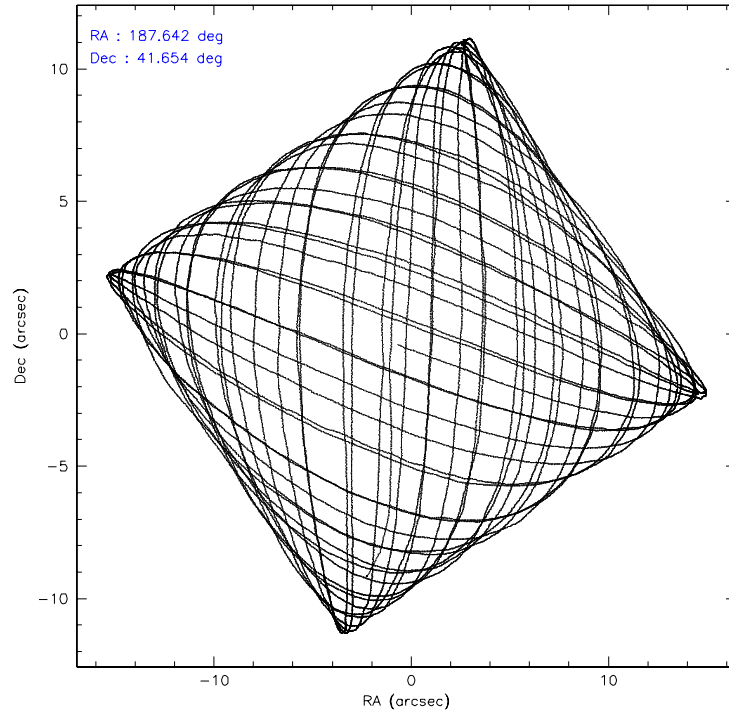
	ccd 2	ccd 3	ccd 5	ccd 6	ccd 7	ccd 8
level 1 events	123084	117723	167346	126667	158932	179777
rejected events	107828	103524	88175	110971	86536	123064
rejected %	87%	87%	52%	87%	54%	68%

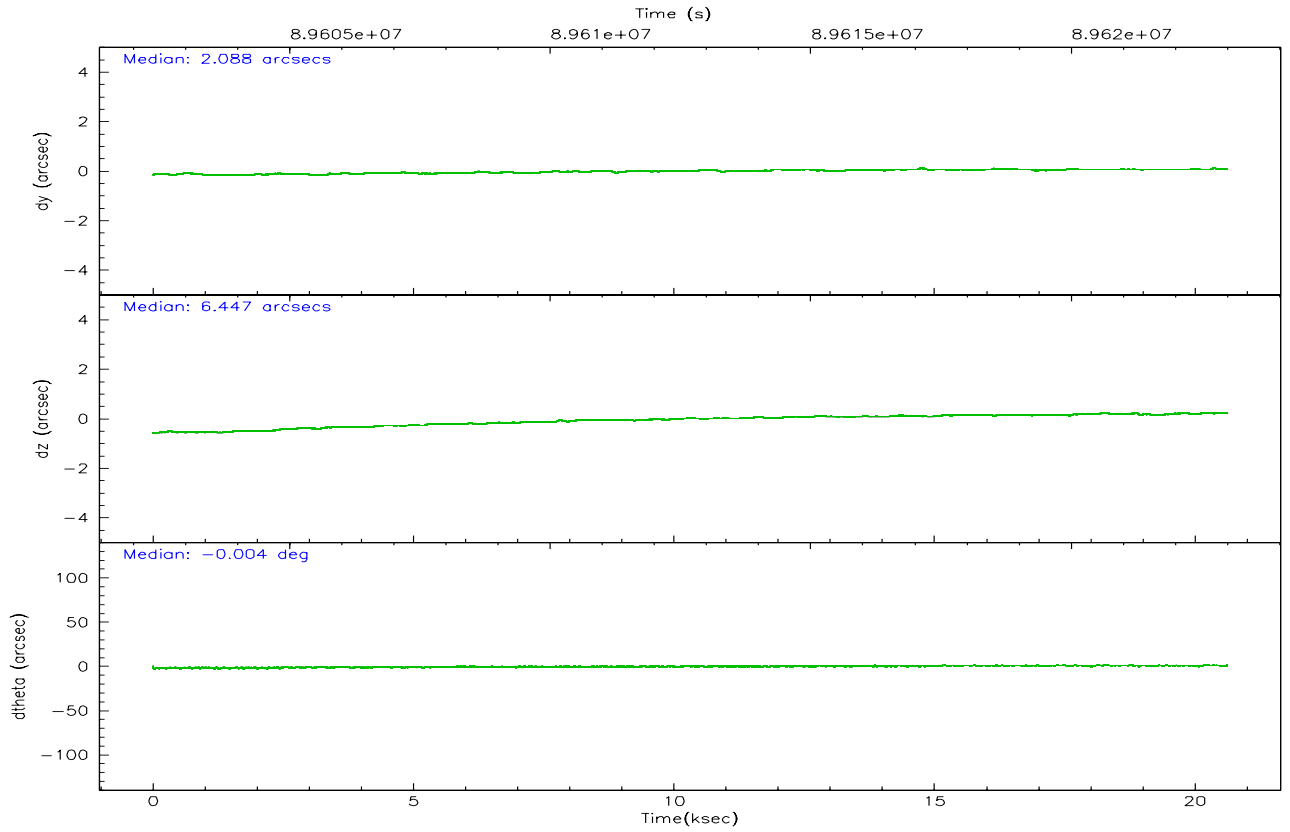
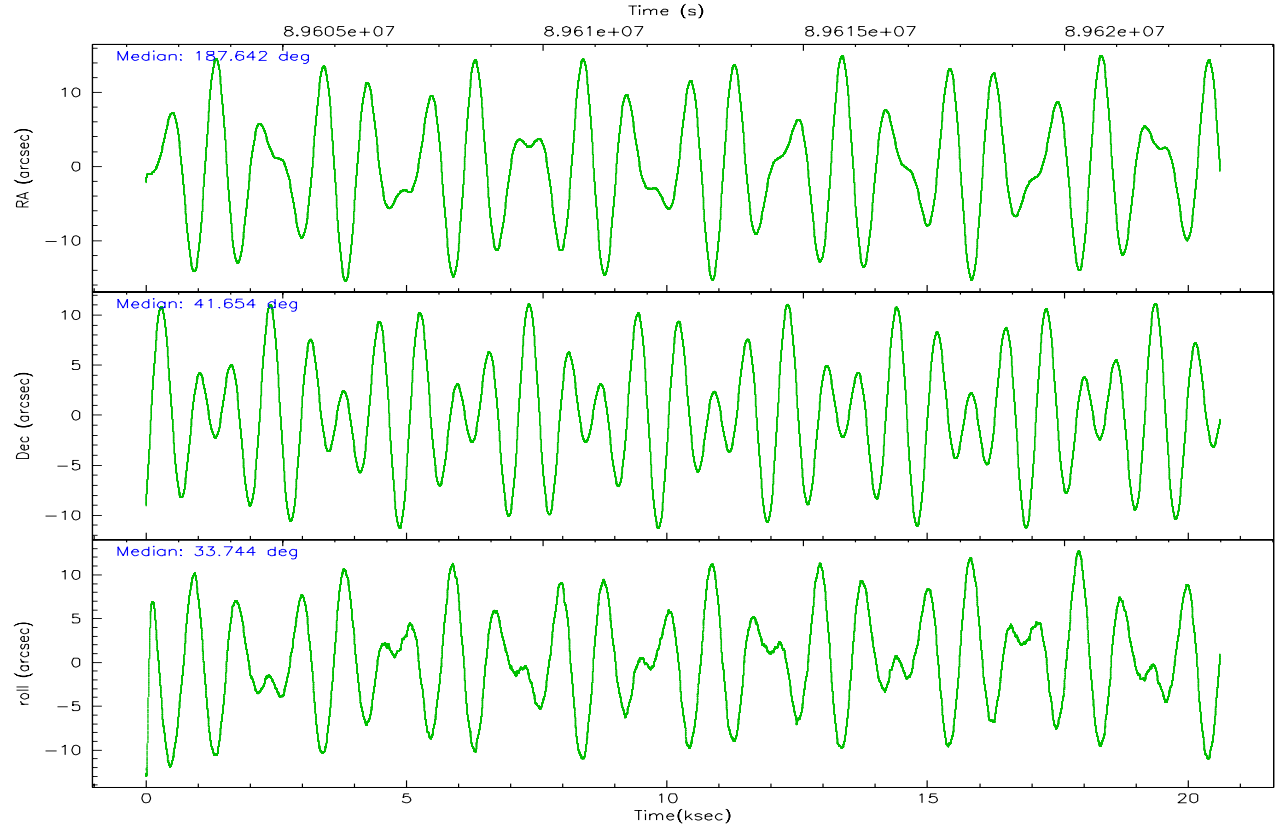
	ccd 2	ccd 3	ccd 5	ccd 6	ccd 7	ccd 8
grade 0 events	6629	5961	10950	6619	8760	18071
	5%	5%	6%	5%	5%	10%
grade 1 events	60	52	315	58	174	148
	0%	0%	0%	0%	0%	0%
grade 2 events	3291	3031	21654	3429	14911	9656
	2%	2%	12%	2%	9%	5%
grade 3 events	1237	1208	3954	1328	6985	8548
	1%	1%	2%	1%	4%	4%
grade 4 events	1394	1258	3749	1359	6867	7777
	1%	1%	2%	1%	4%	4%
grade 5 events	3798	4331	12792	4877	14423	6379
	3%	3%	7%	3%	9%	3%
grade 6 events	2711	2741	38900	2969	34890	12669
	2%	2%	23%	2%	21%	7%
grade 7 events	103964	99141	75032	106028	71922	116529
	84%	84%	44%	83%	45%	64%

## 2.2 Compared Parameters

Parameter	Planned	Actual	Parameter	Planned	Actual
Instrument	ACIS	ACIS	Obspar format version number	6	6
Detector	ACIS-235678	ACIS-235678	Obspar file type	PREDICTED	ACTUAL
Grating	NONE	NONE	Obspar update status	NONE	UPDATED
Data mode	FAINT	FAINT	Number of optional ACIS chips dropped	0	0
Observation mode	POINTING	POINTING	On-chip summing requested	N	N
Pointing RA	187.626184	187.6421547745646	Subarray requested	NONE	NONE
Pointing Dec	41.629302	41.65392311868975	Alternating exposures requested	N	N
Pointing Roll	33.601328	33.74732551640665	Primary exposure time	0.000000	3.2
SIM focus pos (mm)	-0.684267	-0.6828225247311905			
SIM defocus (mm)	0	0.001444936568705701			
SIM translation stage pos (mm)	-190.132523	-190.1400660498719			
SIM translation stage offset (mm)	0	0.00754346686406393			
Observation start time	89603178.184000	89601908.406958			
Observation start date	2000-11-03T01:45:14	2000-11-03T01:25:08			
Observation end time	89622995.184000	89623588.182777			
Observation end date	2000-11-03T07:15:31	2000-11-03T07:26:28			
Read mode	TIMED	TIMED			

## 2.3 Aspect





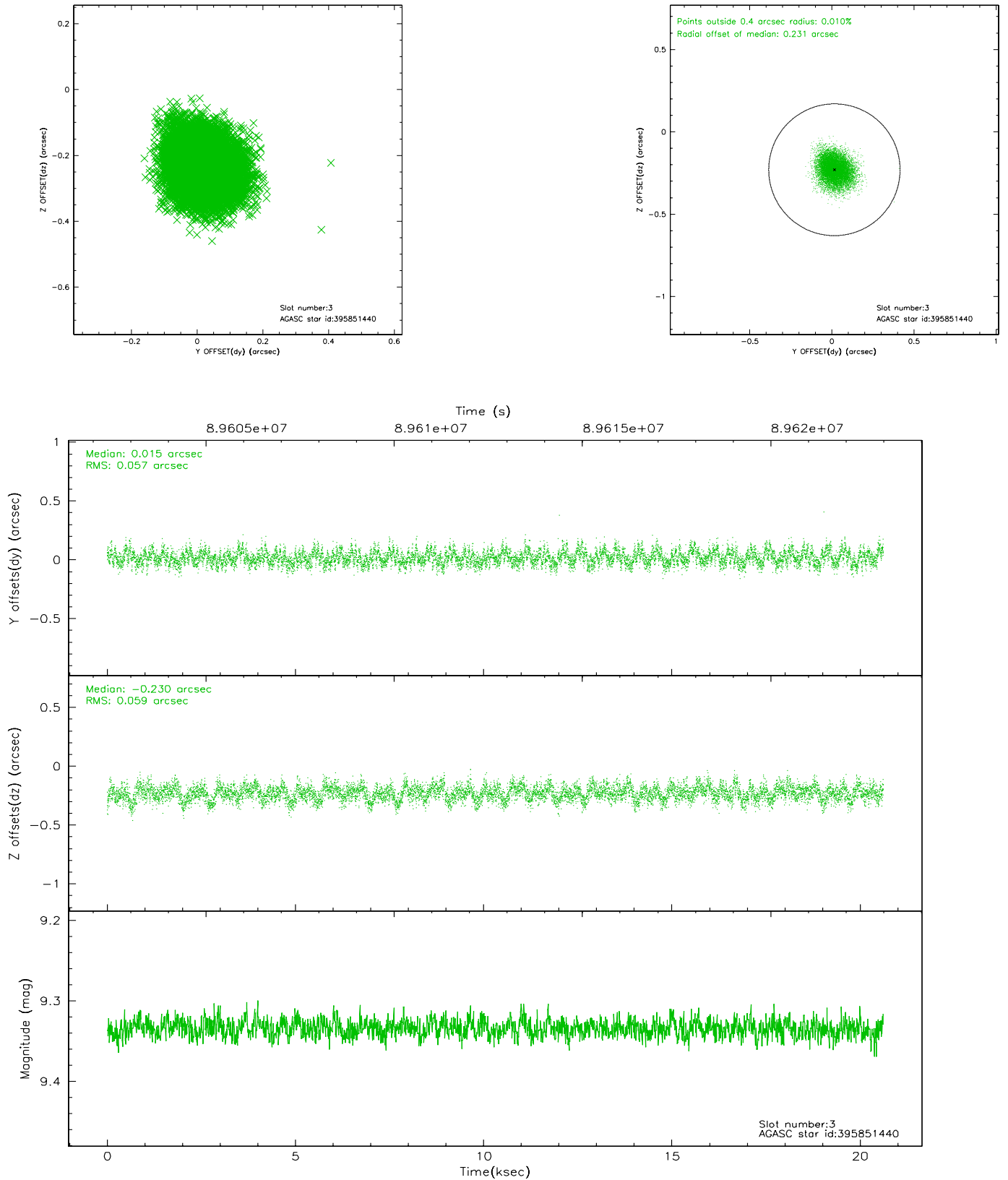
### Slot Statistics

slot	status	id	mag	n_pts	med_dy	med_dz	dr1	dr2	ra	dec	mean_y	mean_z
0	FID	ACIS-S-2	7.11	5029	-0.024	0.024	0.008	0.014	0.000000	0.000000	-754.70	-1727.51
1	FID	ACIS-S-4	7.20	5029	-0.063	0.005	0.007	0.012	0.000000	0.000000	2158.44	180.80
2	FID	ACIS-S-5	7.23	5029	0.057	-0.021	0.007	0.011	0.000000	0.000000	-1807.25	174.61
3	GUIDE	395851440	9.33	10059	0.015	-0.230	0.088	0.140	187.131494	42.071574	-216.44	2060.48
4	GUIDE	395842632	9.11	10057	-0.097	-0.084	0.078	0.128	187.414657	41.992279	253.46	1402.14
5	GUIDE	395846904	9.51	10050	-0.115	0.140	0.116	0.185	188.630312	41.670367	2341.06	-1357.87
6	GUIDE	395578096	8.45	10055	0.014	0.240	0.088	0.146	187.586419	40.830440	-1679.92	-2335.62
7	GUIDE	395848336	9.92	10049	0.186	-0.066	0.119	0.210	187.027211	41.445090	-1708.71	346.28

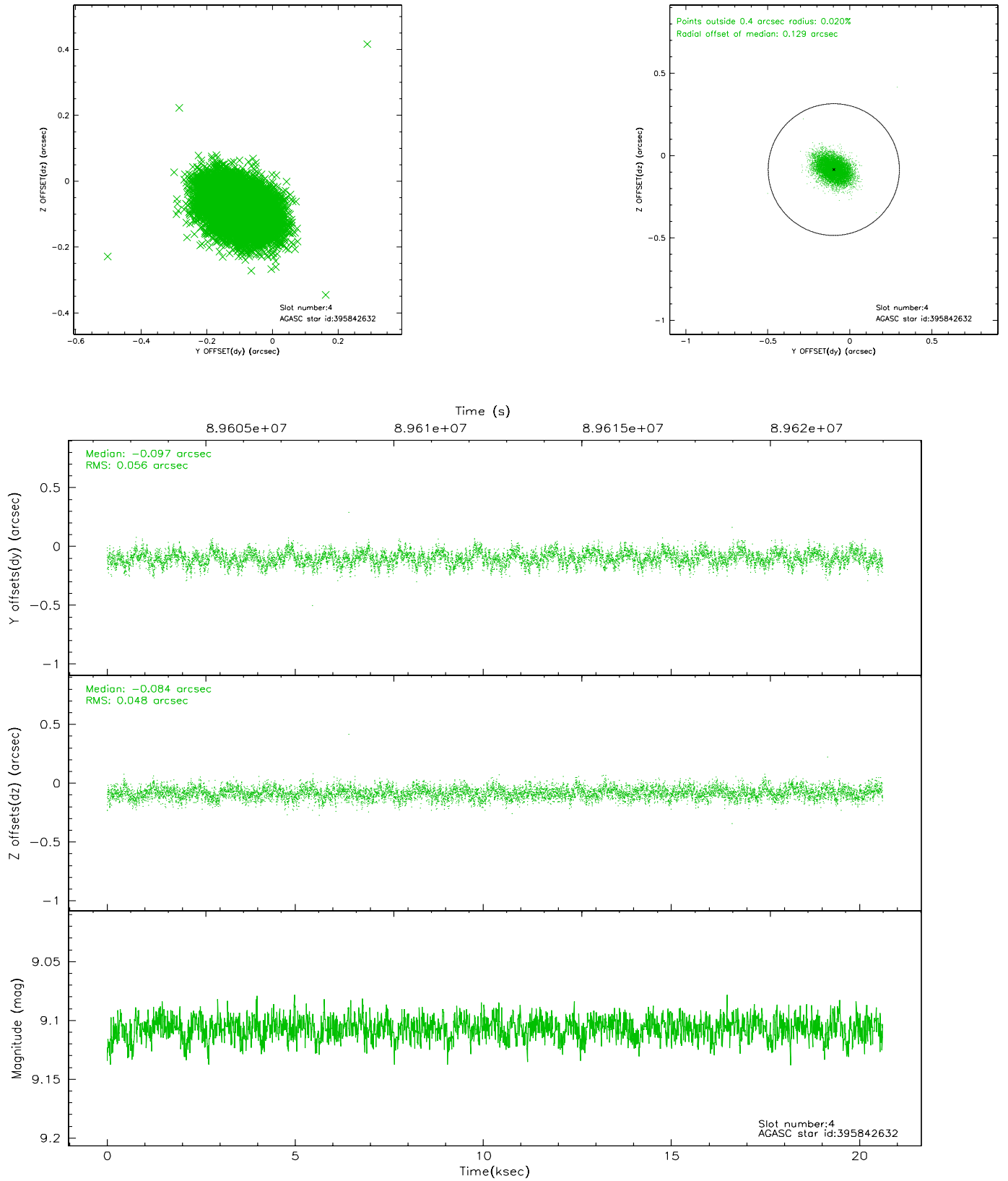


## 2.4 Star Slots

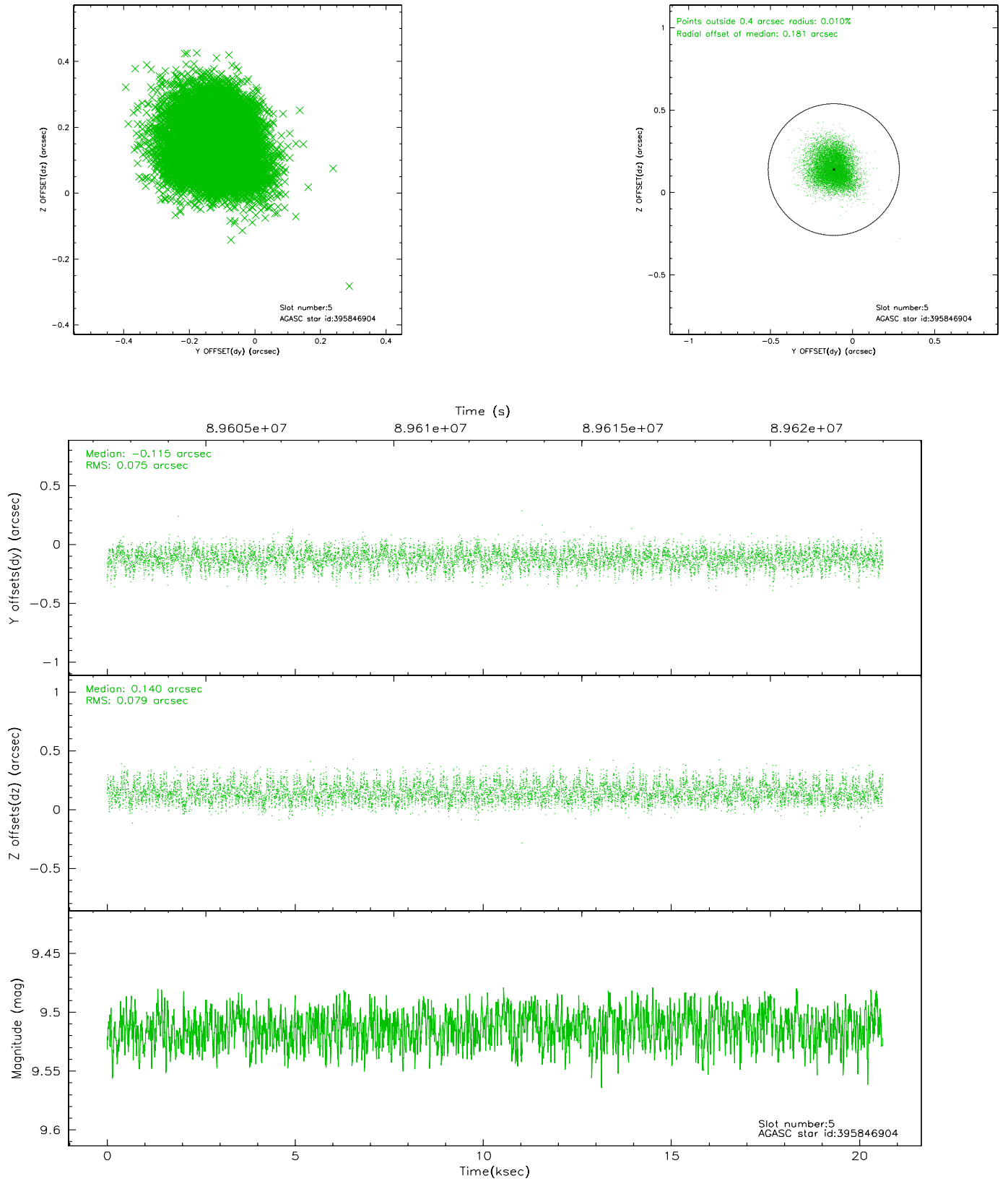
### 2.4.1 Slot 3



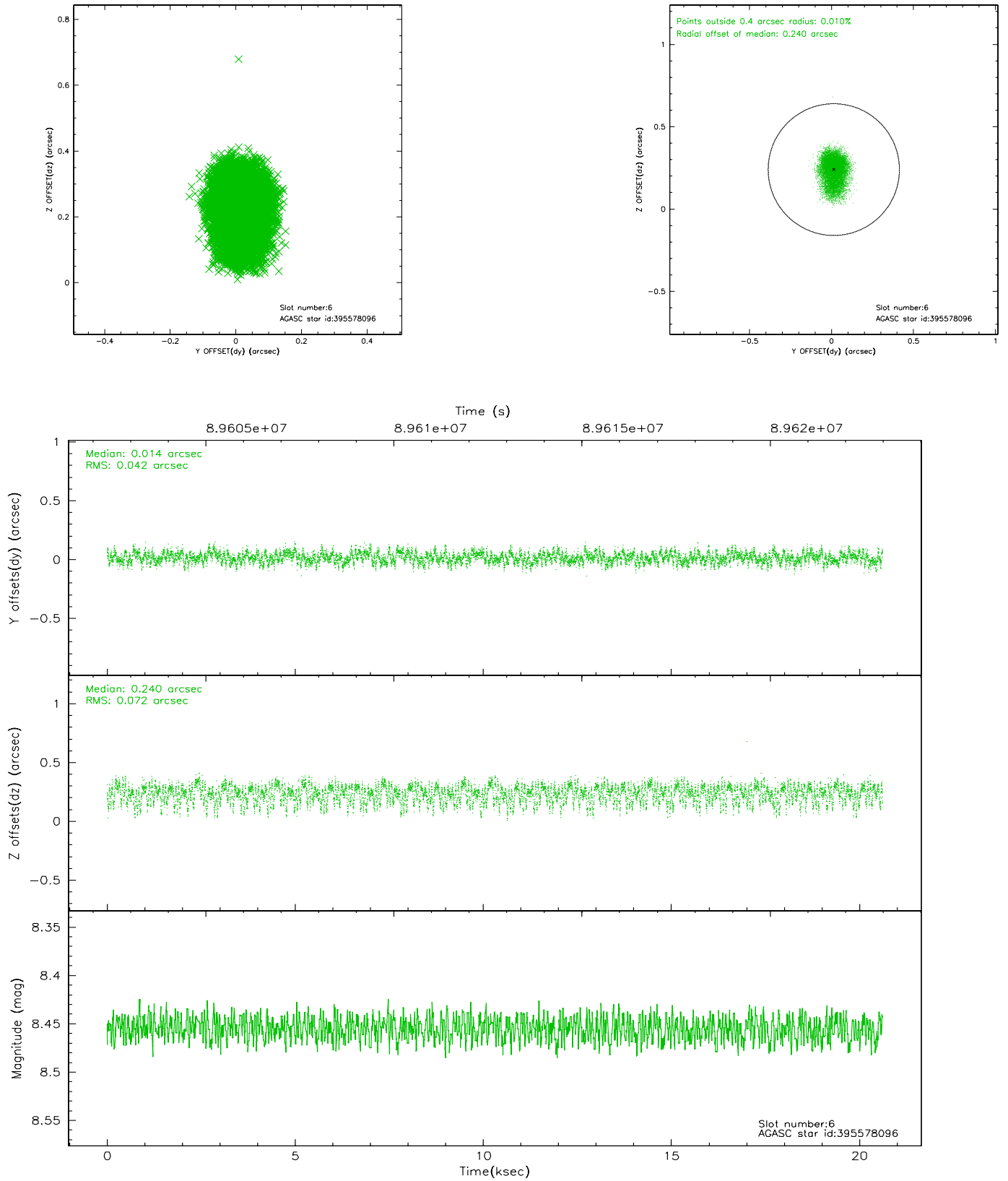
## 2.4.2 Slot 4



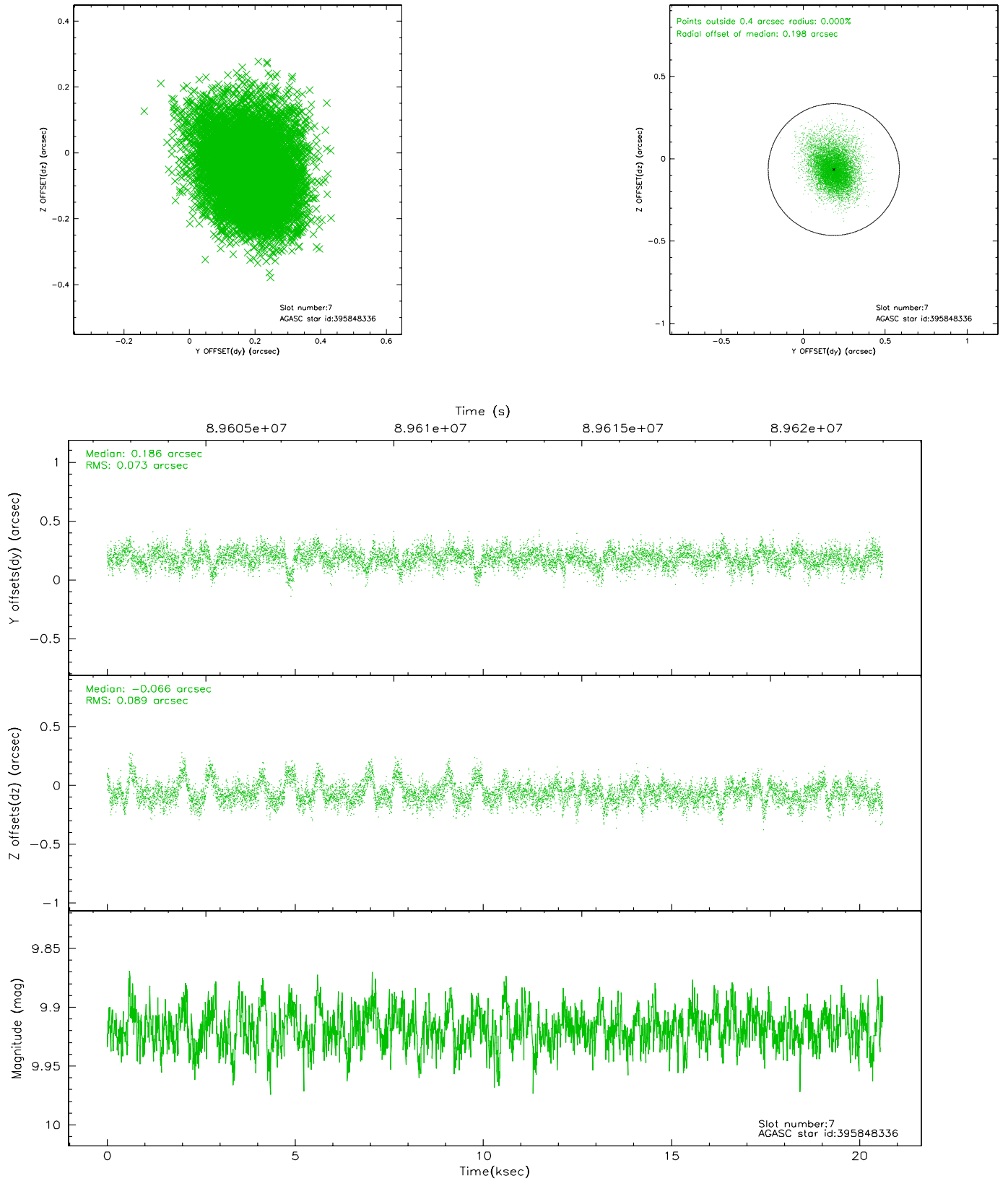
### 2.4.3 Slot 5



## 2.4.4 Slot 6

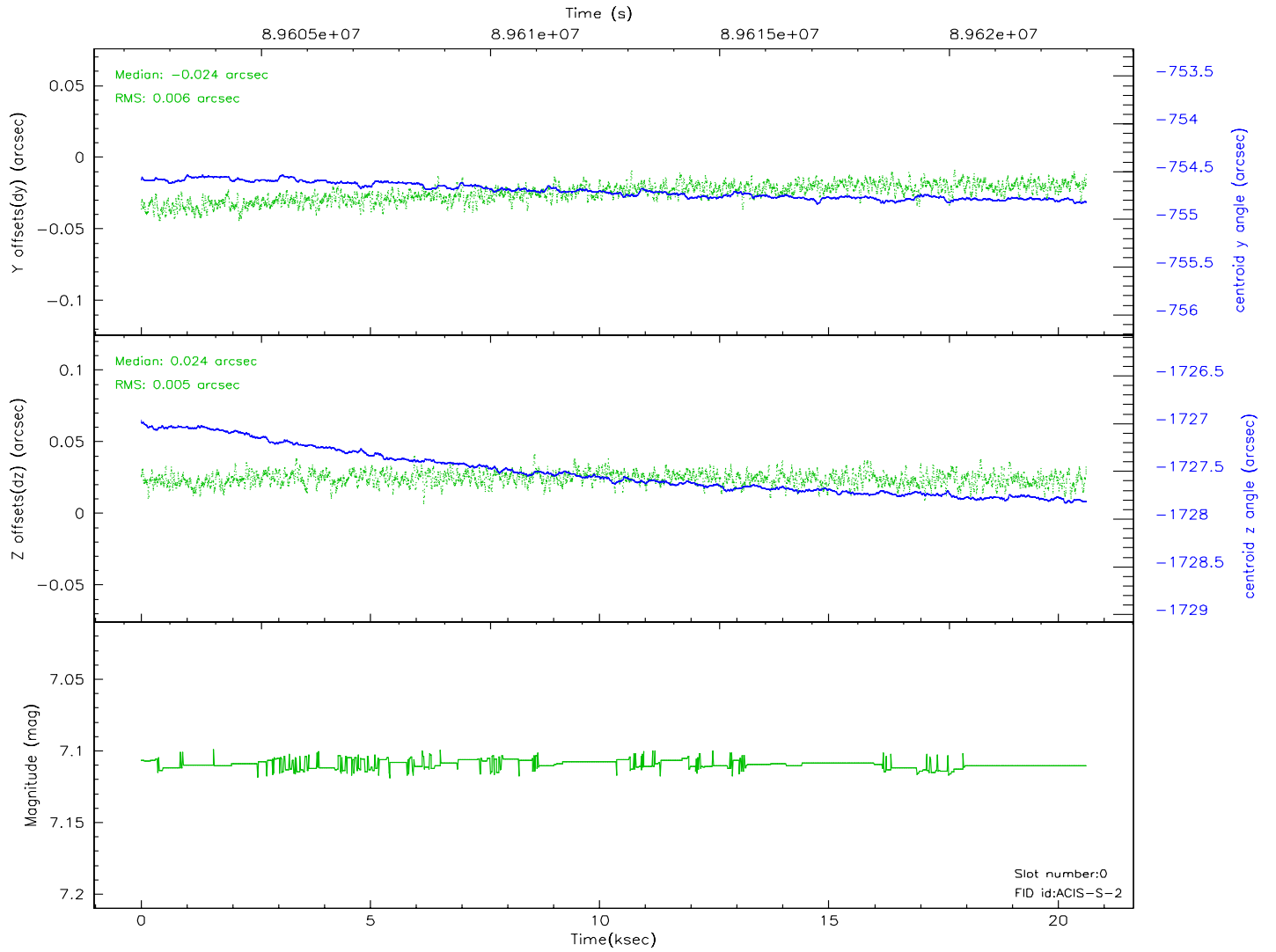
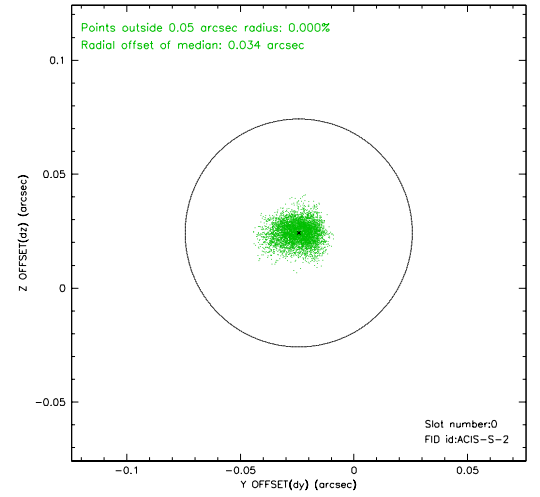
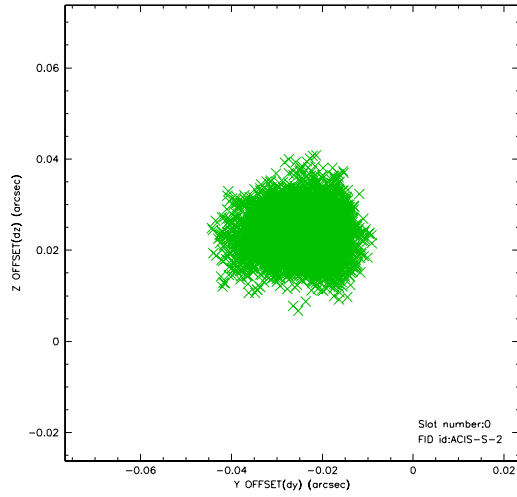


## 2.4.5 Slot 7

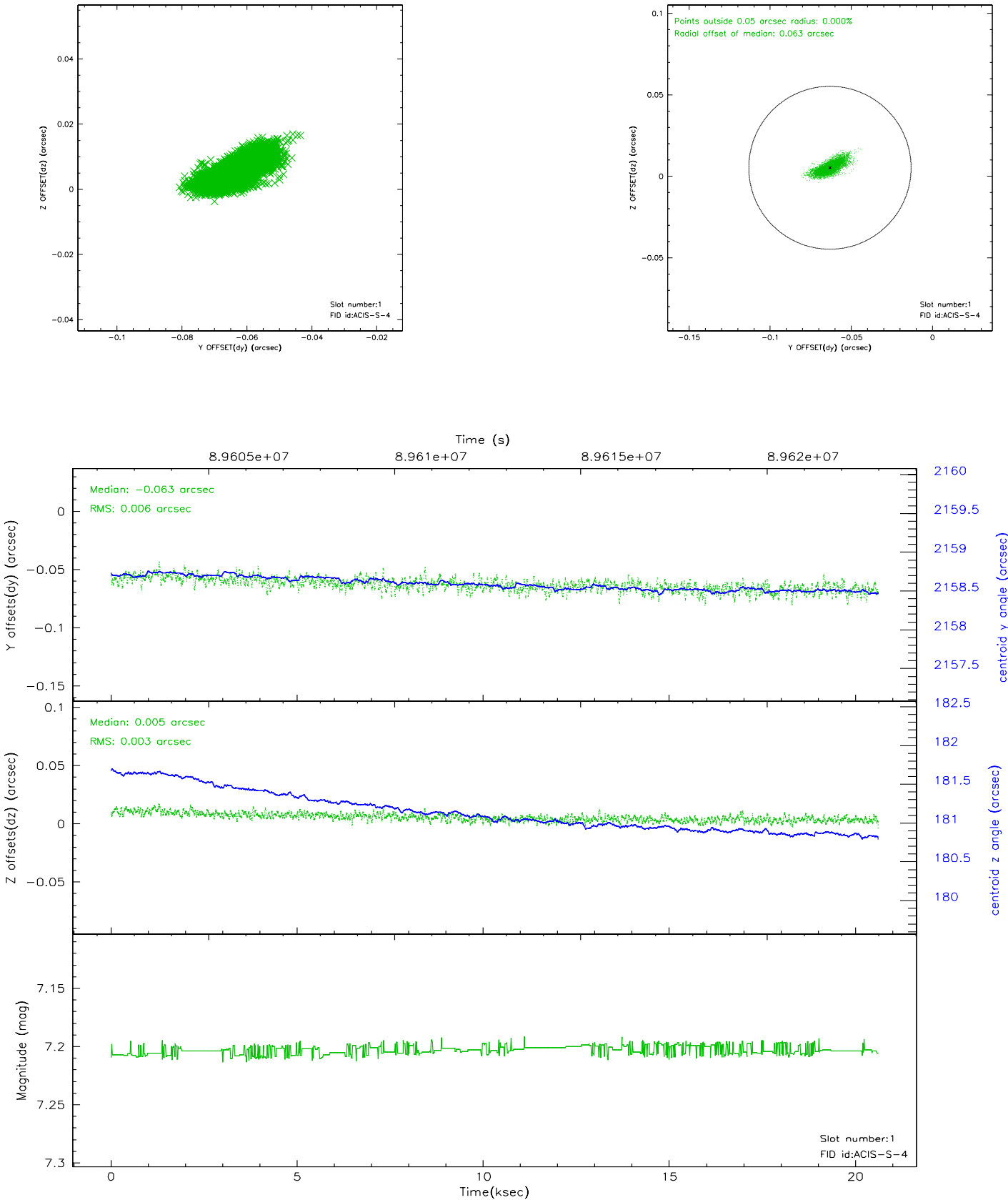


## 2.5 FID Slots

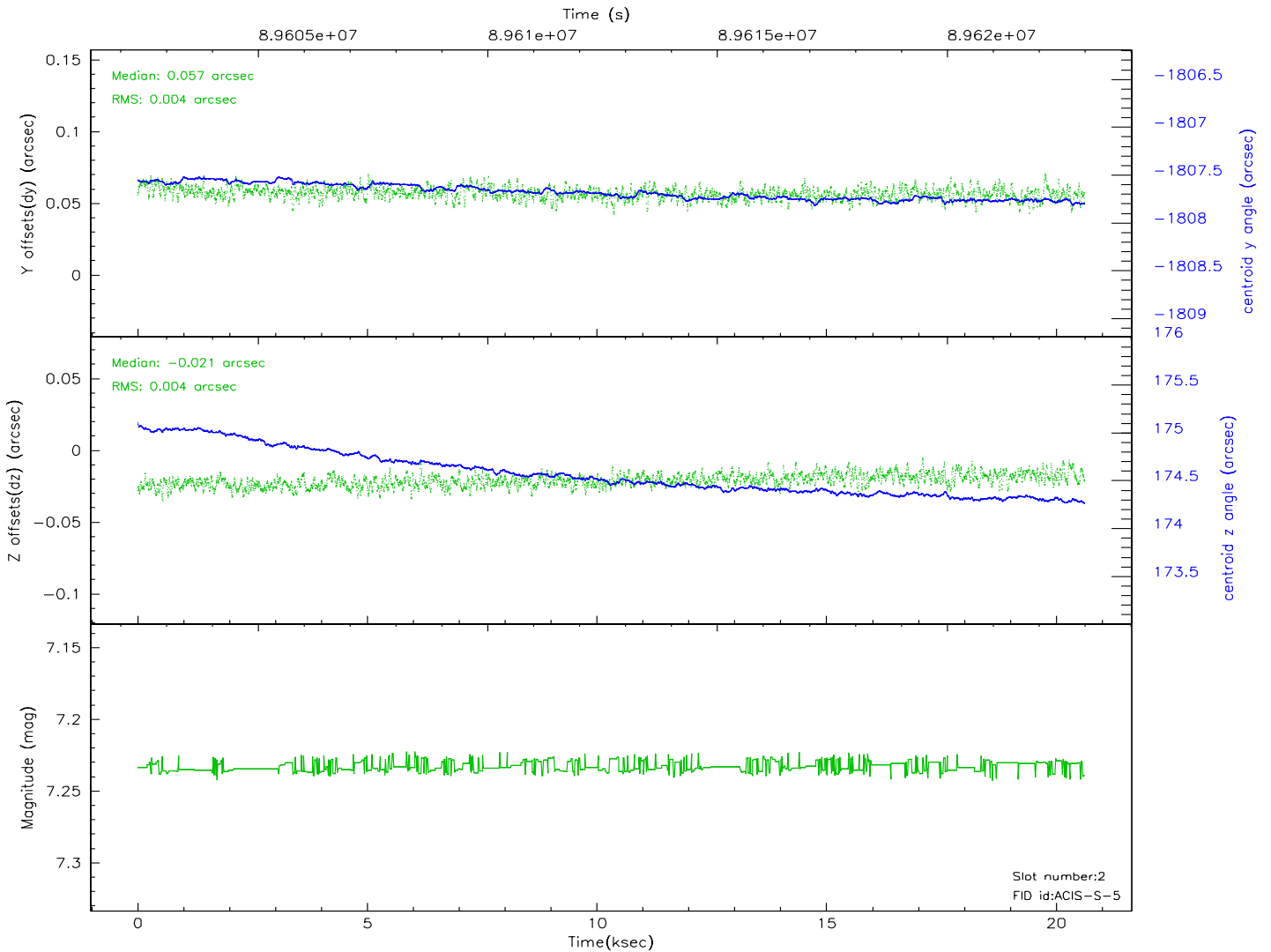
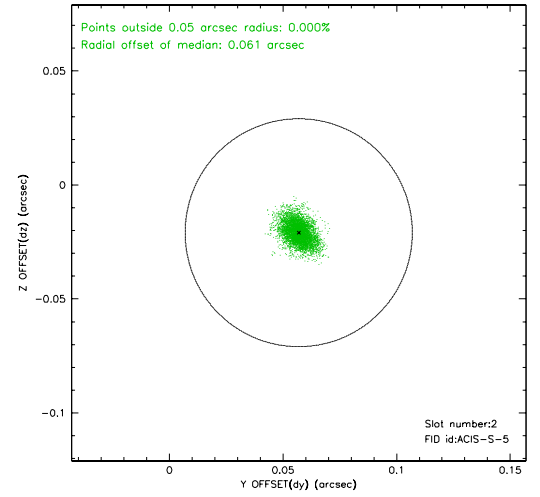
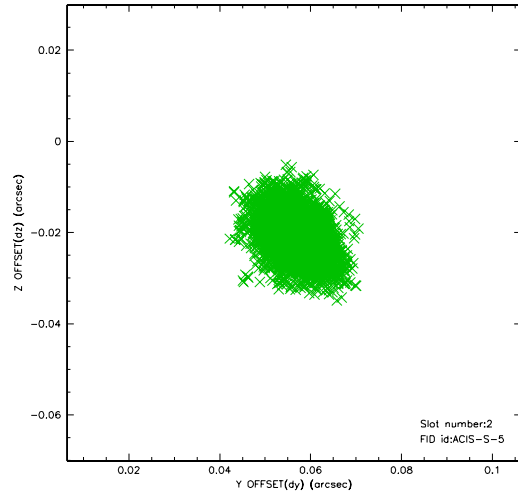
### 2.5.1 Slot 0



2.5.2 Slot 1

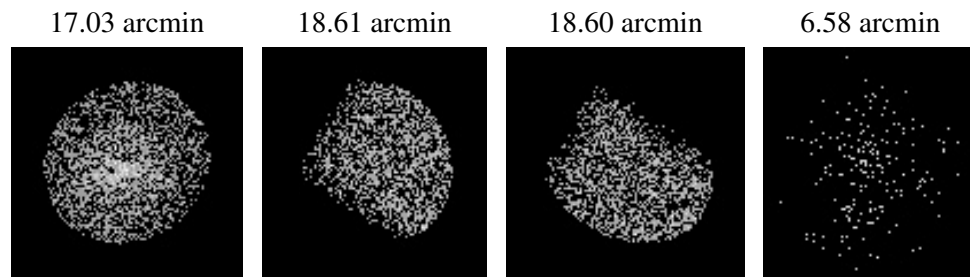


## 2.5.3 Slot 2





### 3 Point Sources



## A Summary

### A.1 Status

V&V Scientist	Beth Sundheim
V&V Date (YYYY-MM-DD)	2007.06.14
V&V Edition	1
V&V Disposition and Status	OK
V&V Charge Time	19.772

### A.2 Comments