

V&V Reference Report

L2 ASCDS Version : 7.6.9

Observation 2318 - L2 Version 001
Chandra X-Ray Center

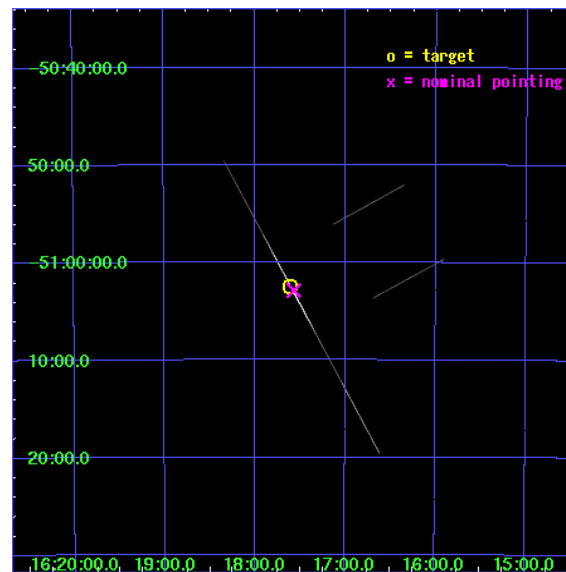
L2 Processing Date : Jan 5 2007

Contents

1	Front	2
2	OBI	3
2.1	OBI	3
2.1.1	Images	3
2.1.2	Bias	3
2.1.3	Parameters	4
2.1.4	Events	4
2.2	Compared Parameters	5
2.3	Aspect	6
2.4	Star Slots	9
2.4.1	Slot 3	9
2.4.2	Slot 4	10
2.4.3	Slot 5	11
2.4.4	Slot 6	12
2.4.5	Slot 7	13
2.5	FID Slots	14
2.5.1	Slot 0	14
2.5.2	Slot 1	15
2.5.3	Slot 2	16
A	Summary	17
A.1	Status	17
A.2	Comments	17

1 Front

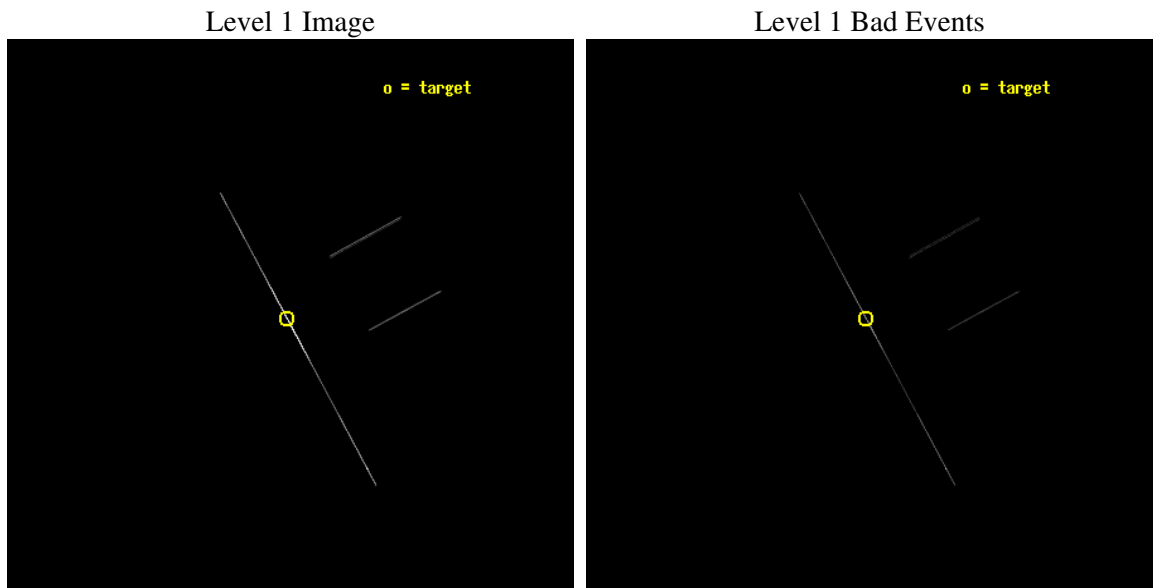
seq_num	500195
obs_id	2318
title	OBSERVATION OF SNR RCW103
observer	Professor Gordon Garmire
object	RCW103
ra_targ	244.401292
dec_targ	-51.0402
ra_nom	244.39169493491
dec_nom	-51.047860774773
roll_nom	241.58913760814
revision	3
ontime	3810.0
livetime	3795.1171875
ontime2	3810.0
ontime3	3810.0
ontime5	3810.0
ontime6	3810.0
ontime7	3810.0
ontime8	3810.0
l2events	236111



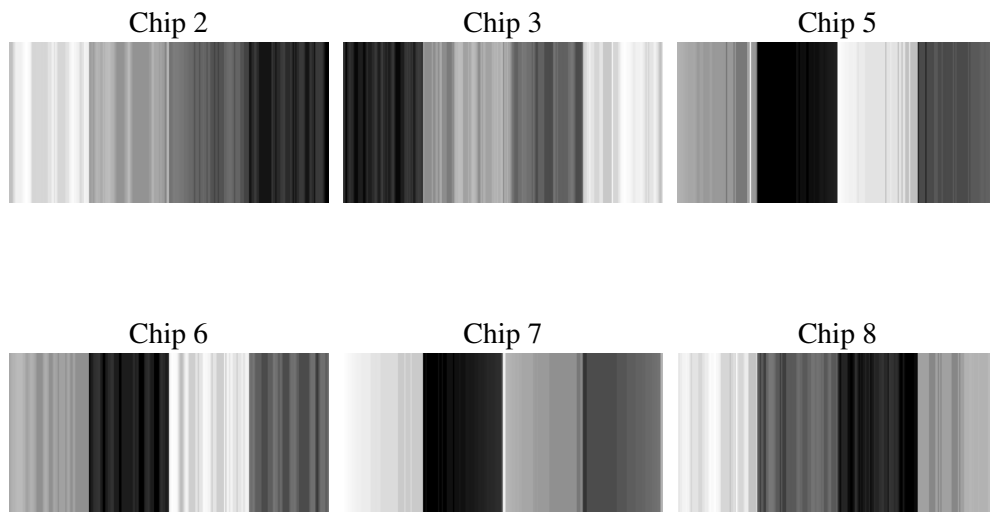
2 OBI

2.1 OBI

2.1.1 Images



2.1.2 Bias



2.1.3 Parameters

obi_num	1
ascdsver	7.6.9
caldbver	3.2.4
date	2007-01-05T12:49:26
revision	3

sched_exp_time	3500.000000
ontime	4530.713482663
ontime2	4532.1883547157
ontime3	4532.246267572
ontime5	4532.1726079136
ontime6	4532.1726492643
ontime7	4530.713482663
ontime8	4530.7135240287
l1events	284648

2.1.4 Events

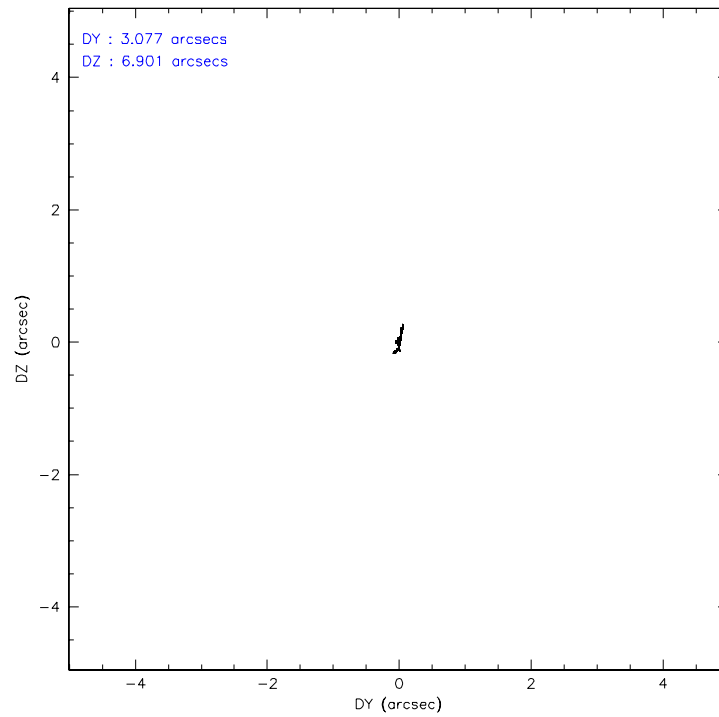
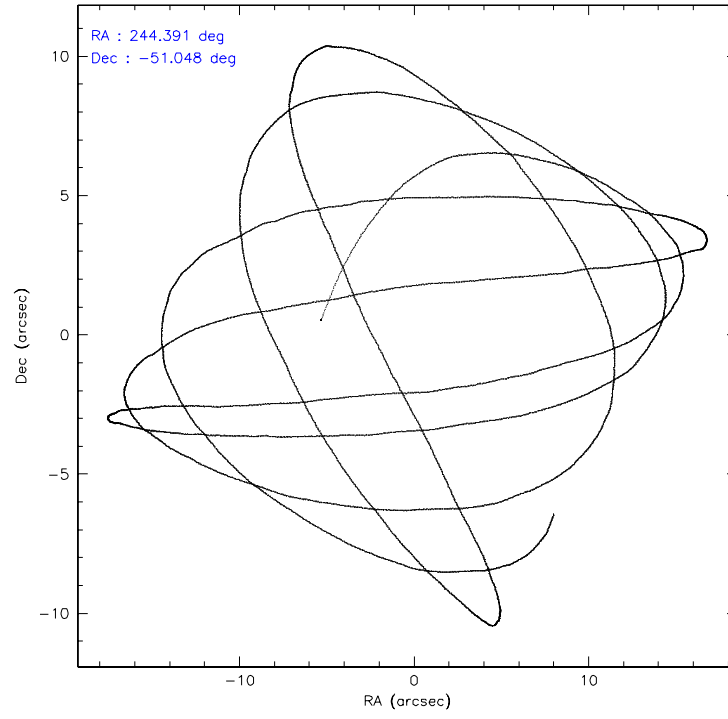
	ccd 2	ccd 3	ccd 5	ccd 6	ccd 7	ccd 8
level 1 events	6667	6762	27273	44048	185114	14784
rejected events	2205	1940	6821	3524	12563	3593
rejected %	33%	28%	25%	8%	6%	24%

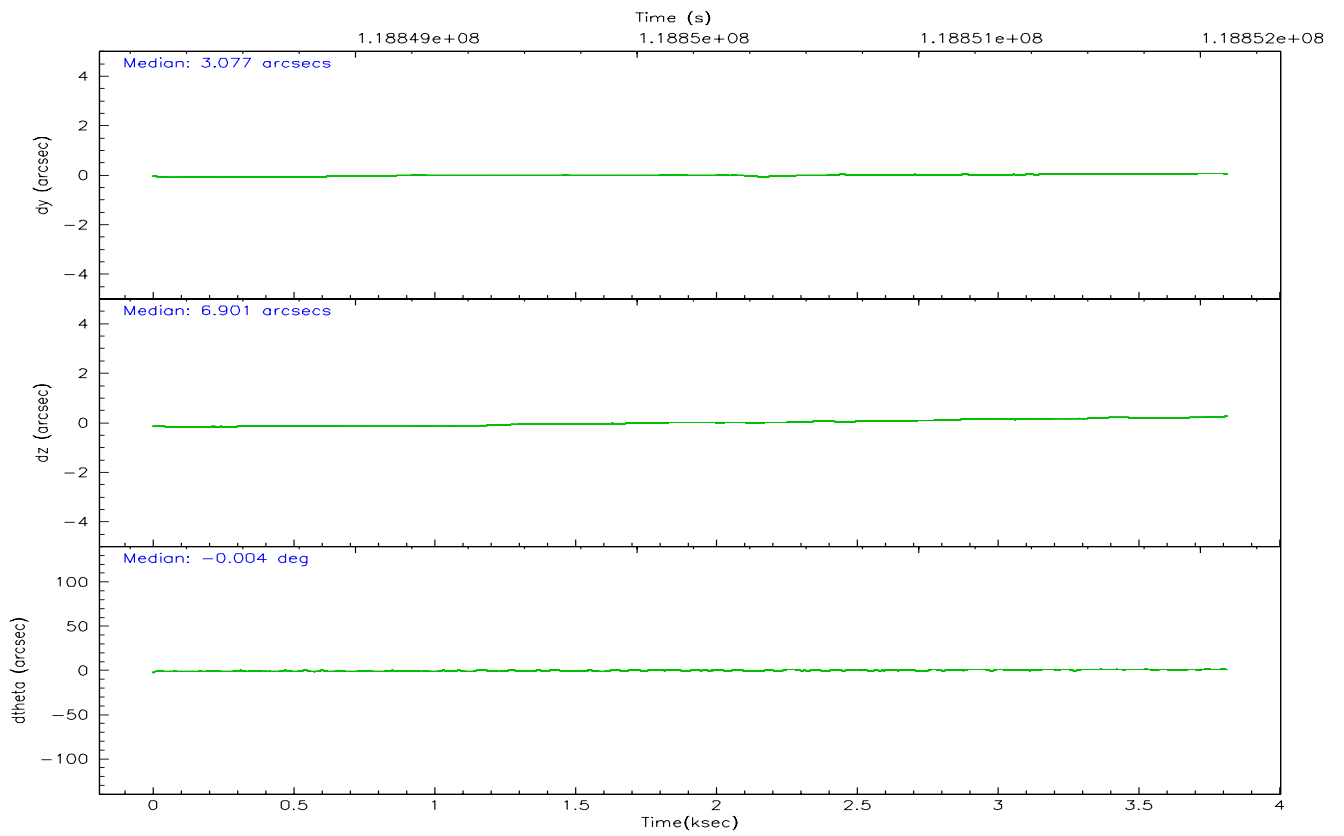
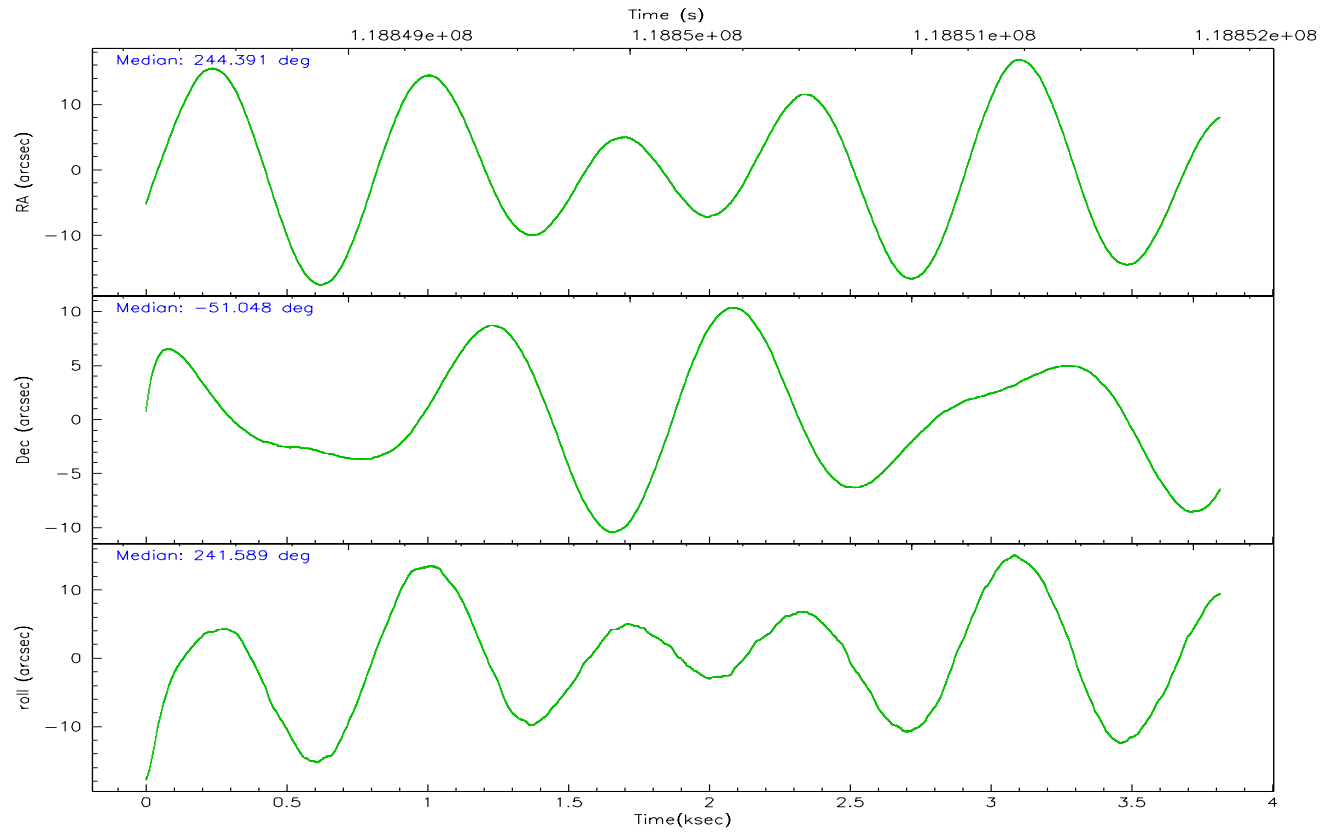
	ccd 2	ccd 3	ccd 5	ccd 6	ccd 7	ccd 8
grade 0 events	804	737	6108	6132	47468	3120
	12%	10%	22%	13%	25%	21%
grade 1 events	14	29	25	18	108	36
	0%	0%	0%	0%	0%	0%
grade 2 events	2637	2469	6561	32599	54050	3714
	39%	36%	24%	74%	29%	25%
grade 3 events	689	781	500	882	20014	1778
	10%	11%	1%	2%	10%	12%
grade 4 events	692	668	525	799	19260	1777
	10%	9%	1%	1%	10%	12%
grade 5 events	887	990	2097	1260	3658	1474
	13%	14%	7%	2%	1%	9%
grade 6 events	944	1088	11457	2358	40556	2885
	14%	16%	42%	5%	21%	19%
grade 7 events	0	0	0	0	0	0
	0%	0%	0%	0%	0%	0%

2.2 Compared Parameters

Parameter	Planned	Actual	Parameter	Planned	Actual
Instrument	ACIS	ACIS	Obspar format version number	6	6
Detector	ACIS-235678	ACIS-235678	Obspar file type	PREDICTED	ACTUAL
Grating	NONE	NONE	Obspar update status	NONE	UPDATED
Data mode	CC33_FAINT	CC33_FAINT	Number of optional ACIS chips dropped	0	0
Observation mode	POINTING	POINTING	On-chip summing requested	N	N
Pointing RA	244.389923	244.3916949349135	Subarray requested	NONE	NONE
Pointing Dec	-51.020562	-51.0478607747727	Alternating exposures requested	N	N
Pointing Roll	241.431170	241.5891376081424	Primary exposure time	0.000000	0
Window start time	118281664.184000	118281664.184000			
Window stop time	120009664.184000	120009664.184000			
SIM focus pos (mm)	-0.684267	-0.6828225247311905			
SIM defocus (mm)	0	0.001444936568705701			
SIM translation stage pos (mm)	-190.132523	-190.1400660498719			
SIM translation stage offset (mm)	0	0.00754346686406393			
Observation start time	118848595.184000	118847564.70466			
Observation start date	2001-10-07T13:28:51	2001-10-07T13:12:44			
Observation end time	118852095.184000	118852922.89238			
Observation end date	2001-10-07T14:27:11	2001-10-07T14:42:02			
Read mode	CONTINUOUS	CONTINUOUS			

2.3 Aspect



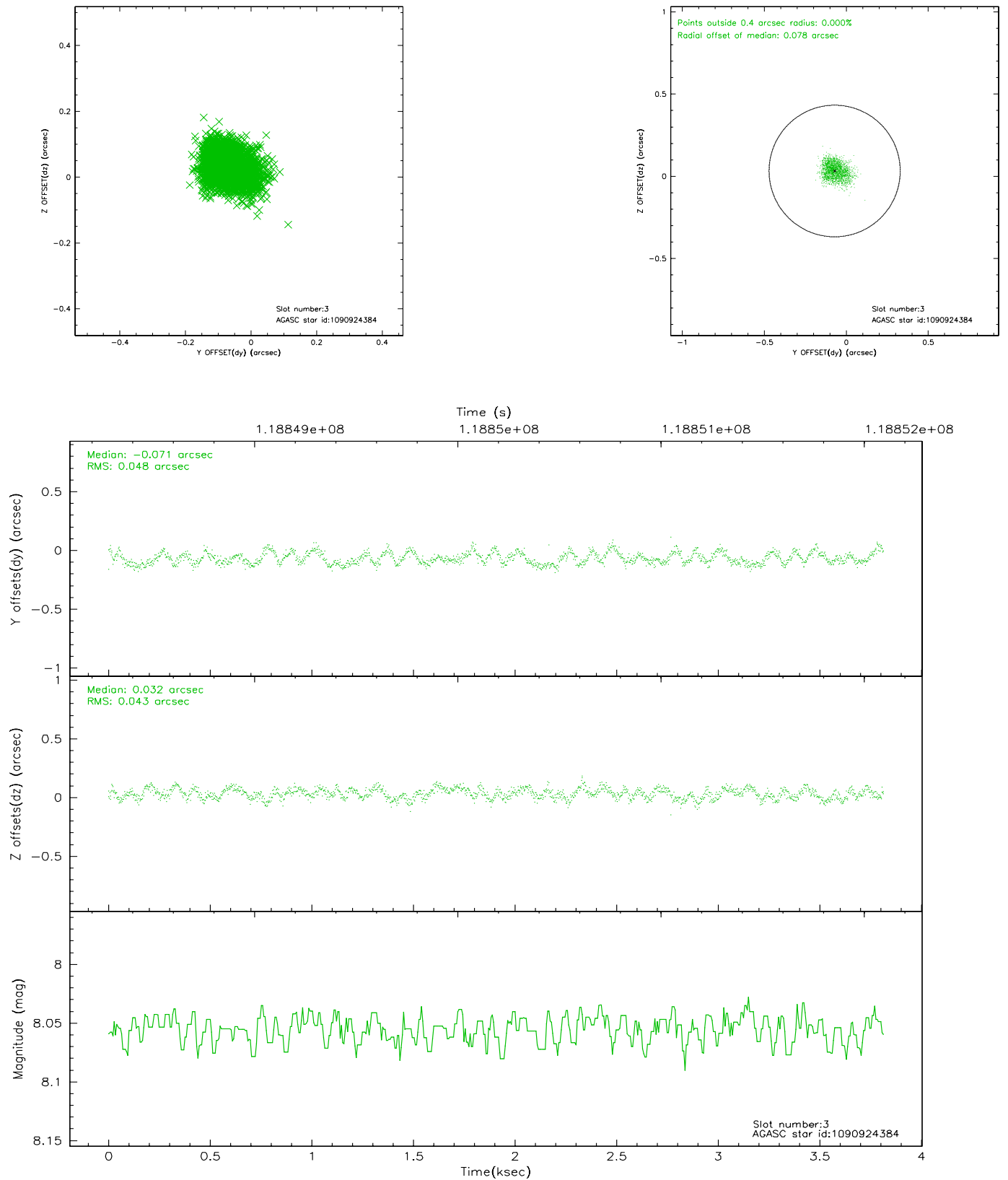


Slot Statistics

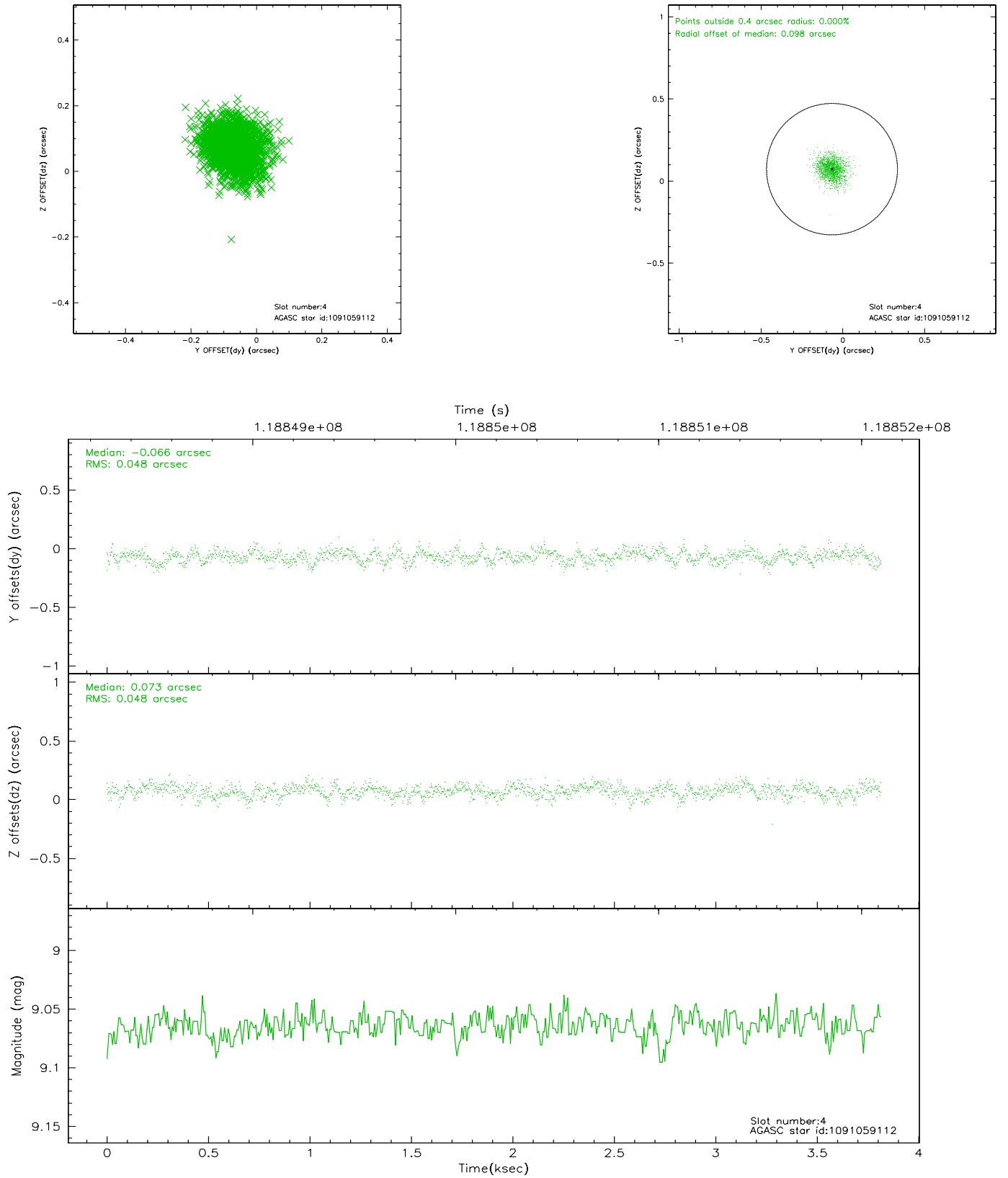
slot	status	id	mag	n_pts	med_dy	med_dz	dr1	dr2	ra	dec	mean_y	mean_z
0	FID	ACIS-S-2	7.12	931	-0.001	0.031	0.007	0.013	0.000000	0.000000	-755.71	-1728.04
1	FID	ACIS-S-4	7.20	931	-0.073	-0.008	0.005	0.009	0.000000	0.000000	2156.74	178.72
2	FID	ACIS-S-5	7.24	931	0.043	-0.015	0.007	0.012	0.000000	0.000000	-1806.40	174.23
3	GUIDE	1090924384	8.05	1862	-0.071	0.032	0.069	0.109	243.330505	-50.934017	889.34	-2251.97
4	GUIDE	1091059112	9.06	1862	-0.066	0.073	0.073	0.117	245.180420	-50.736664	-1751.60	1096.13
5	GUIDE	1090922592	8.68	1862	0.009	-0.067	0.068	0.107	243.541382	-50.784876	186.29	-2095.99
6	GUIDE	1090916640	8.91	1862	0.044	0.044	0.057	0.093	244.322461	-51.464734	1475.28	630.41
7	GUIDE	1090523792	10.23	1859	0.079	-0.090	0.133	0.221	245.121825	-50.587791	-2161.74	728.01

2.4 Star Slots

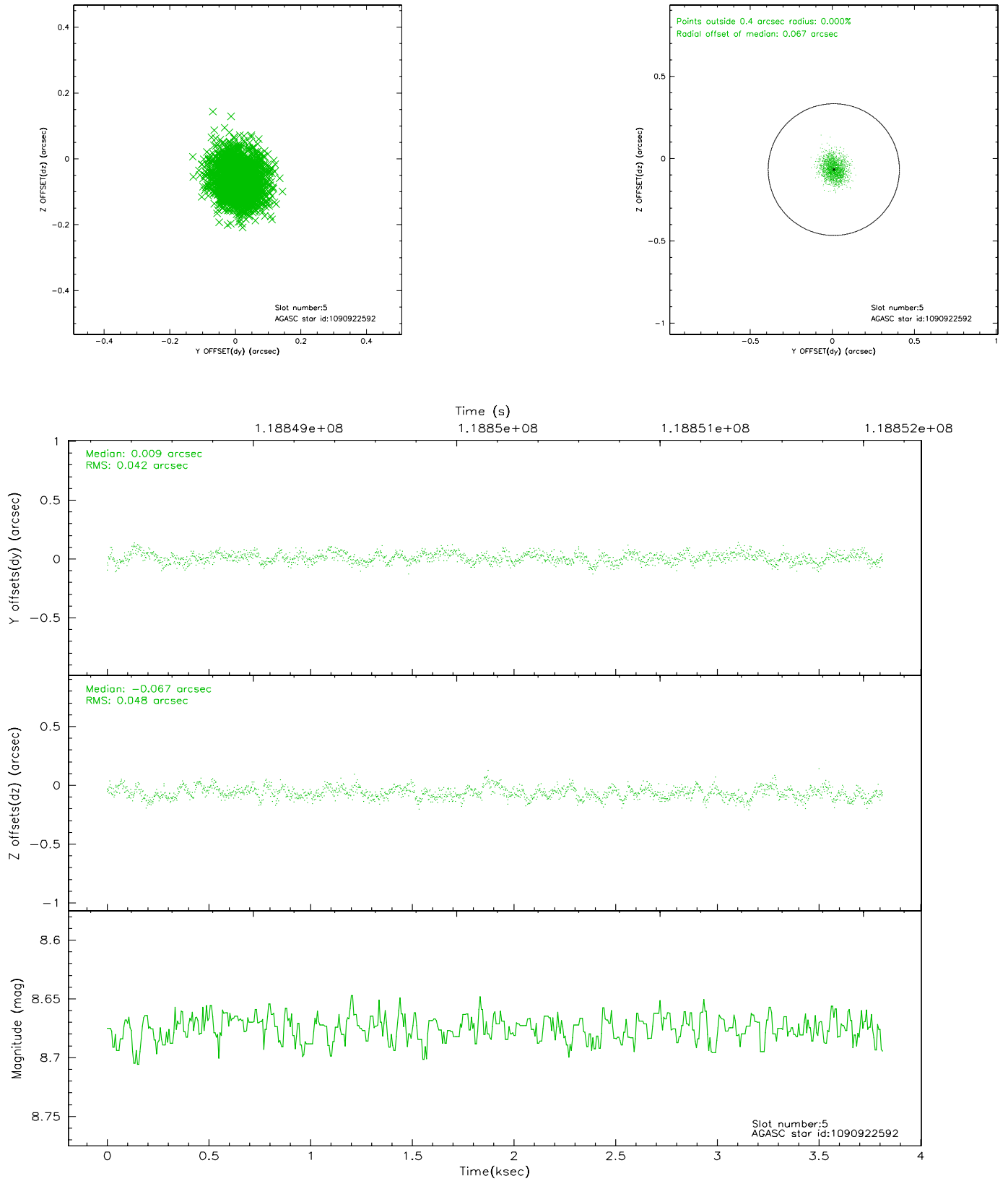
2.4.1 Slot 3



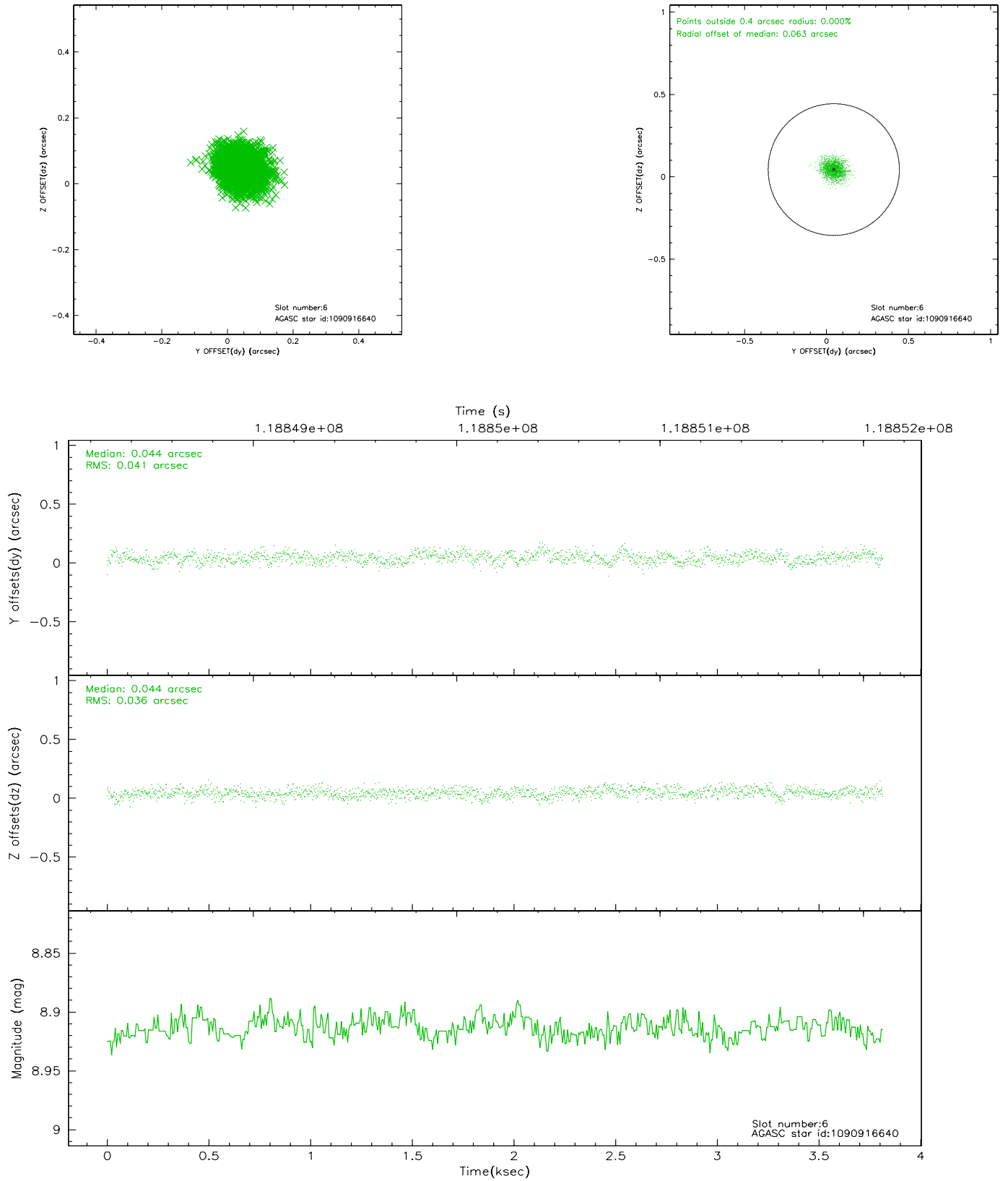
2.4.2 Slot 4



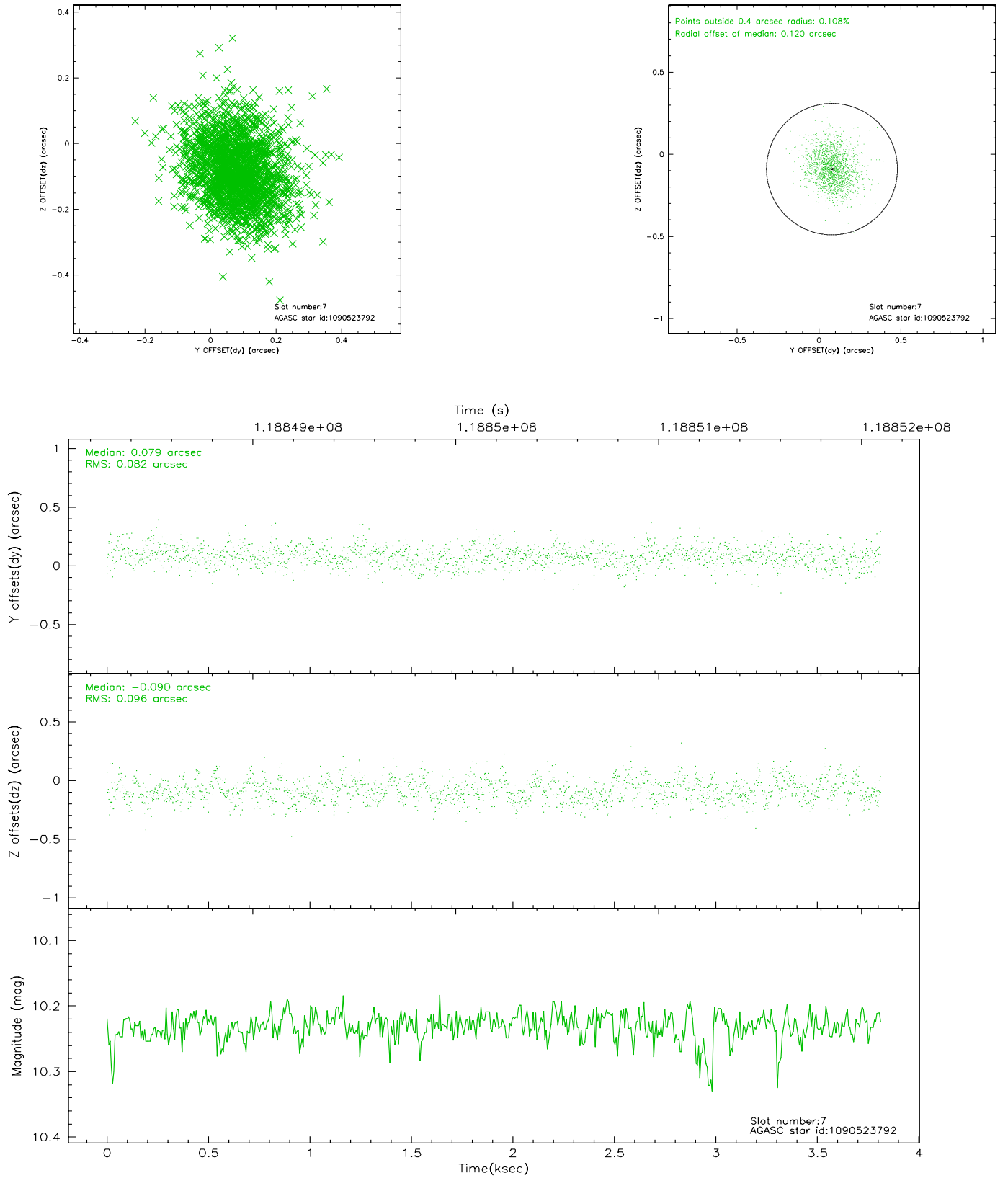
2.4.3 Slot 5



2.4.4 Slot 6

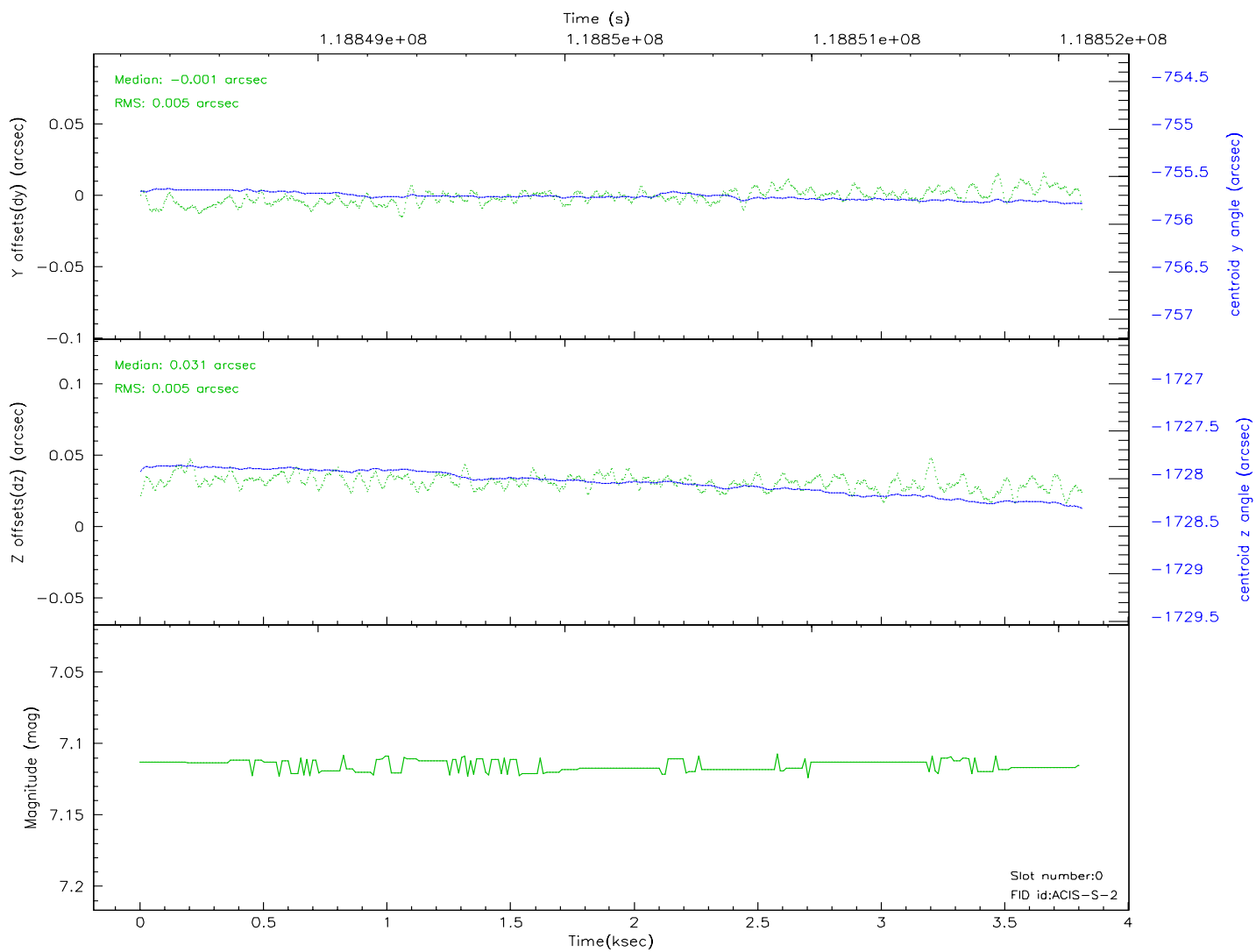
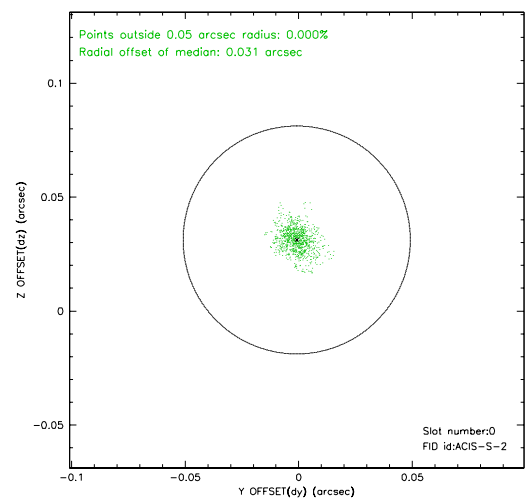
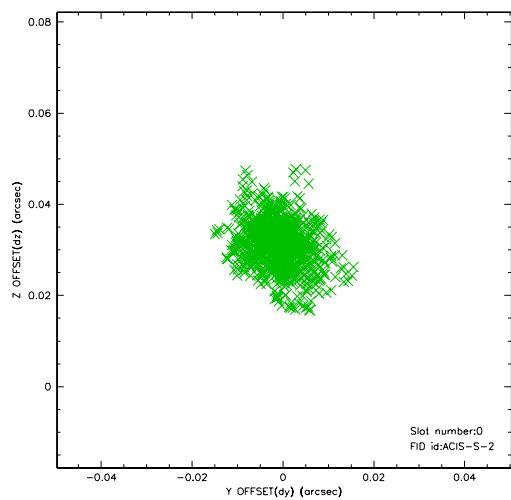


2.4.5 Slot 7

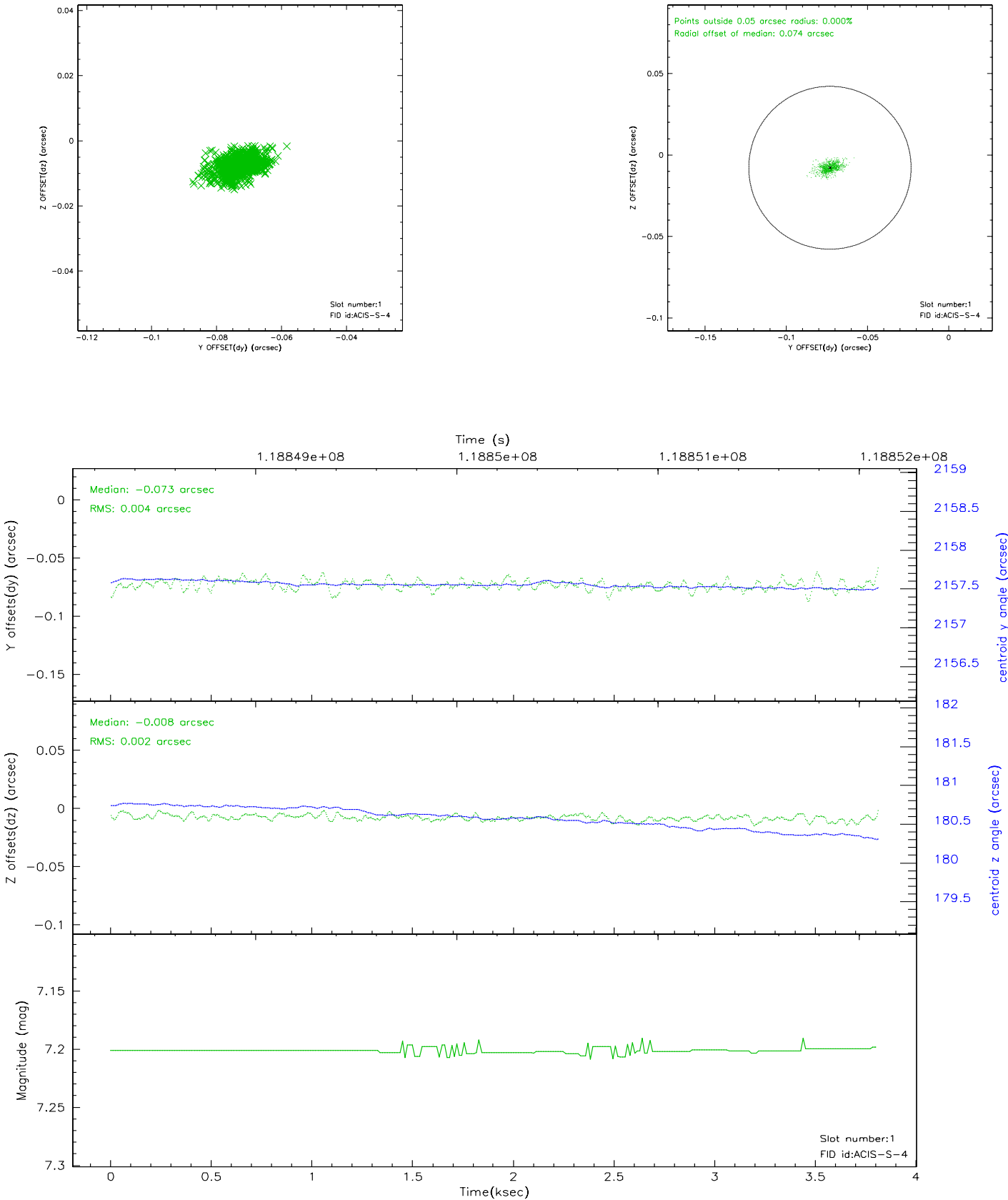


2.5 FID Slots

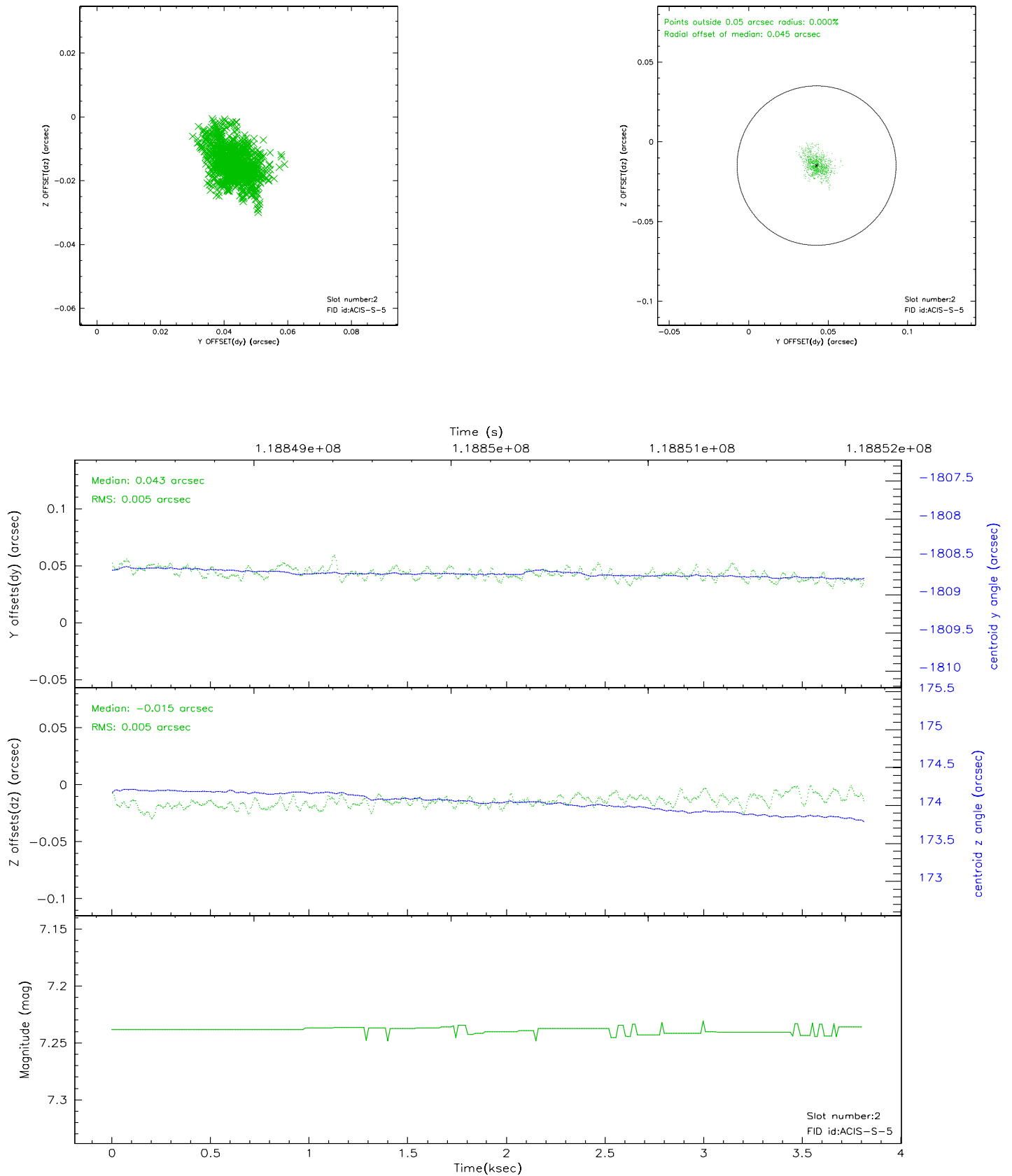
2.5.1 Slot 0



2.5.2 Slot 1



2.5.3 Slot 2



A Summary

A.1 Status

V&V Scientist	Beth Sundheim
V&V Date (YYYY-MM-DD)	2007.01.05
V&V Edition	1
V&V Disposition and Status	OK
V&V Charge Time	3.813

A.2 Comments