

V&V Reference Report

L2 ASCDS Version : 7.6.9

Observation 2317 - L2 Version 001
Chandra X-Ray Center

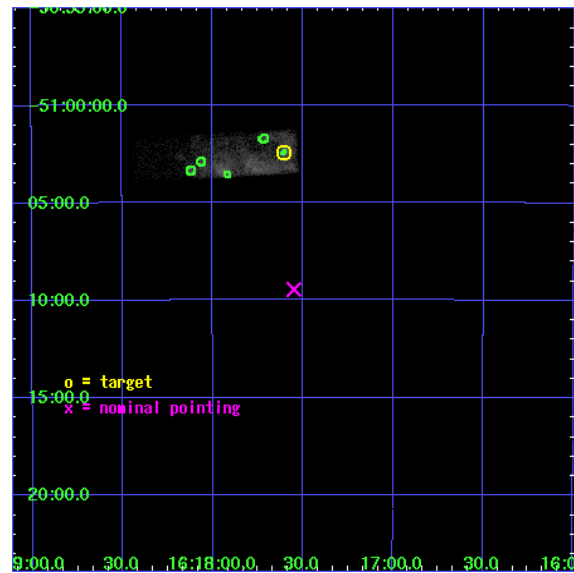
L2 Processing Date : Dec 21 2006

Contents

1	Front	2
2	OBI	3
2.1	OBI	3
2.1.1	Images	3
2.1.2	Bias	3
2.1.3	Parameters	4
2.1.4	Events	4
2.2	Compared Parameters	5
2.3	Aspect	6
2.4	Star Slots	9
2.4.1	Slot 3	9
2.4.2	Slot 4	10
2.4.3	Slot 5	11
2.4.4	Slot 6	12
2.4.5	Slot 7	13
2.5	FID Slots	14
2.5.1	Slot 0	14
2.5.2	Slot 1	15
2.5.3	Slot 2	16
3	Point Sources	17
A	Summary	18
A.1	Status	18
A.2	Comments	18

1 Front

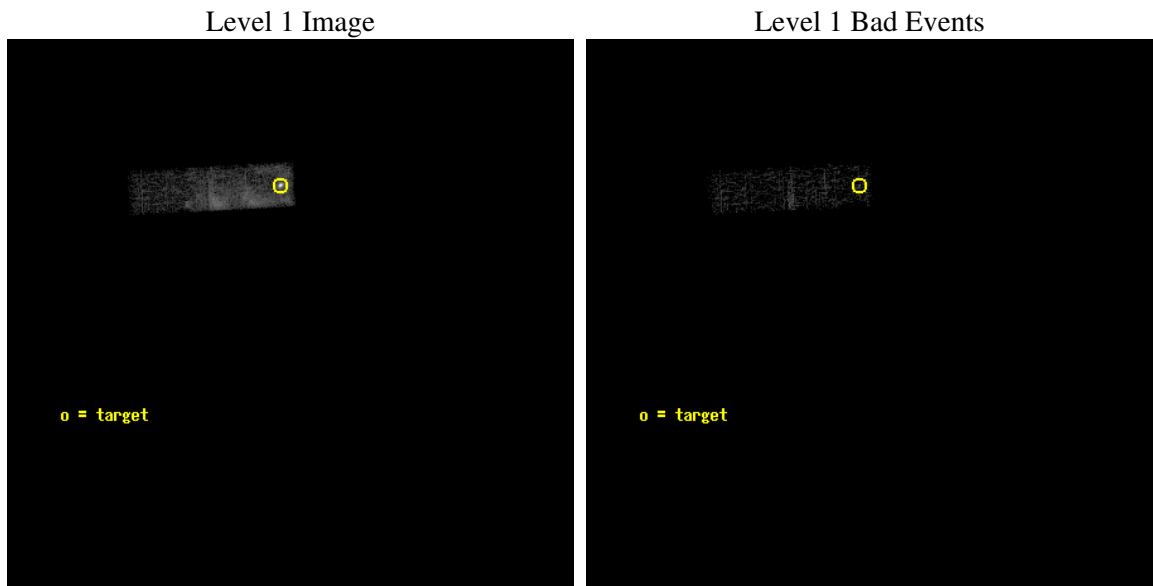
seq_num	500194
obs_id	2317
title	OBSERVATION OF SNR RCW103
observer	Professor Gordon Garmire
object	RCW103
dtcycle	0
cycle	P
ra_targ	244.401292
dec_targ	-51.0402
ra_nom	244.38757726905
dec_nom	-51.157614429239
roll_nom	266.83131209775
revision	2
ontime	3940.7999853194
livetime	3748.5018408821
ontime3	3940.7999853194
l2events	17389



2 OBI

2.1 OBI

2.1.1 Images



2.1.2 Bias

Chip 3



2.1.3 Parameters

obi_num	1
ascdsver	7.6.9
caldbver	3.2.4
date	2006-12-21T15:12:18
revision	2

sched_exp_time	3500.000000
ontime	4322.8905903995
ontime3	4322.8905903995
l1events	27808

2.1.4 Events

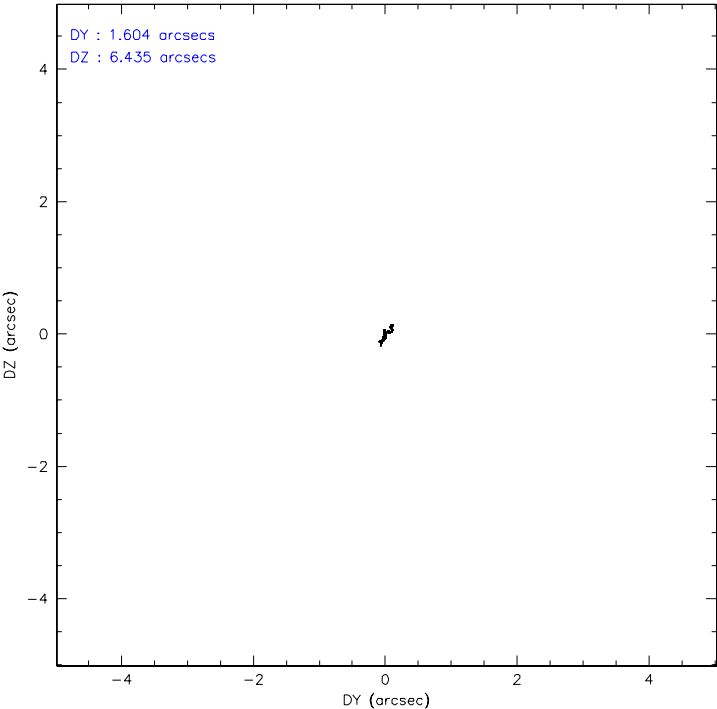
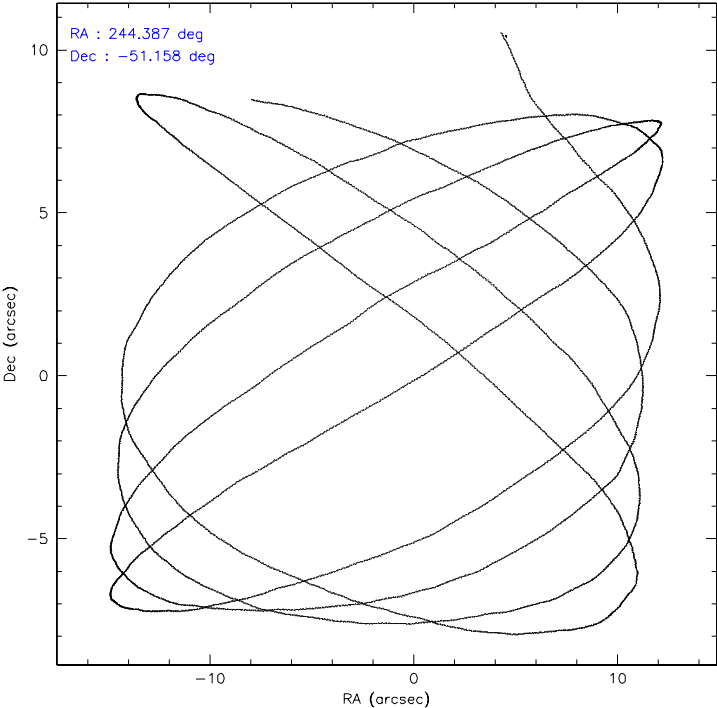
	ccd 3
level 1 events	27808
rejected events	9980
rejected %	35%

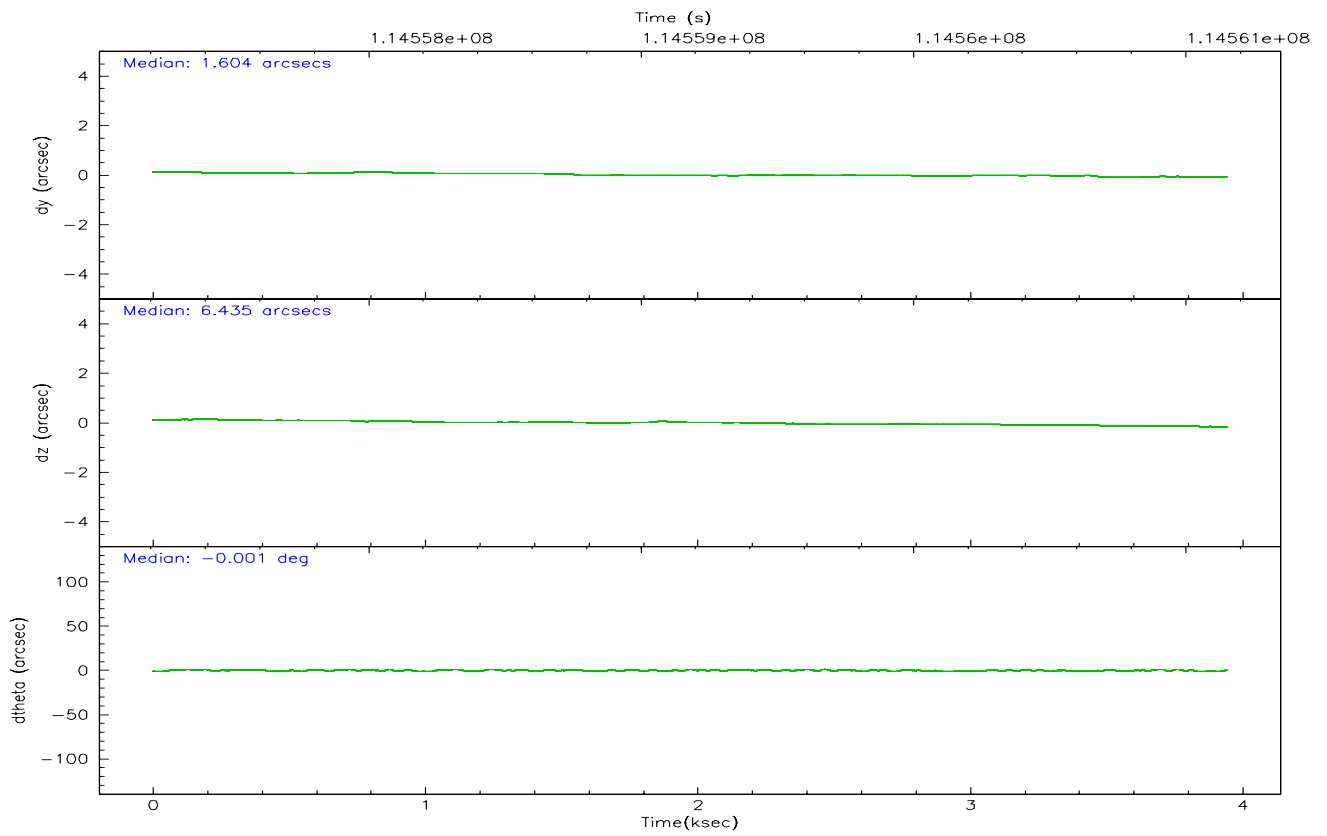
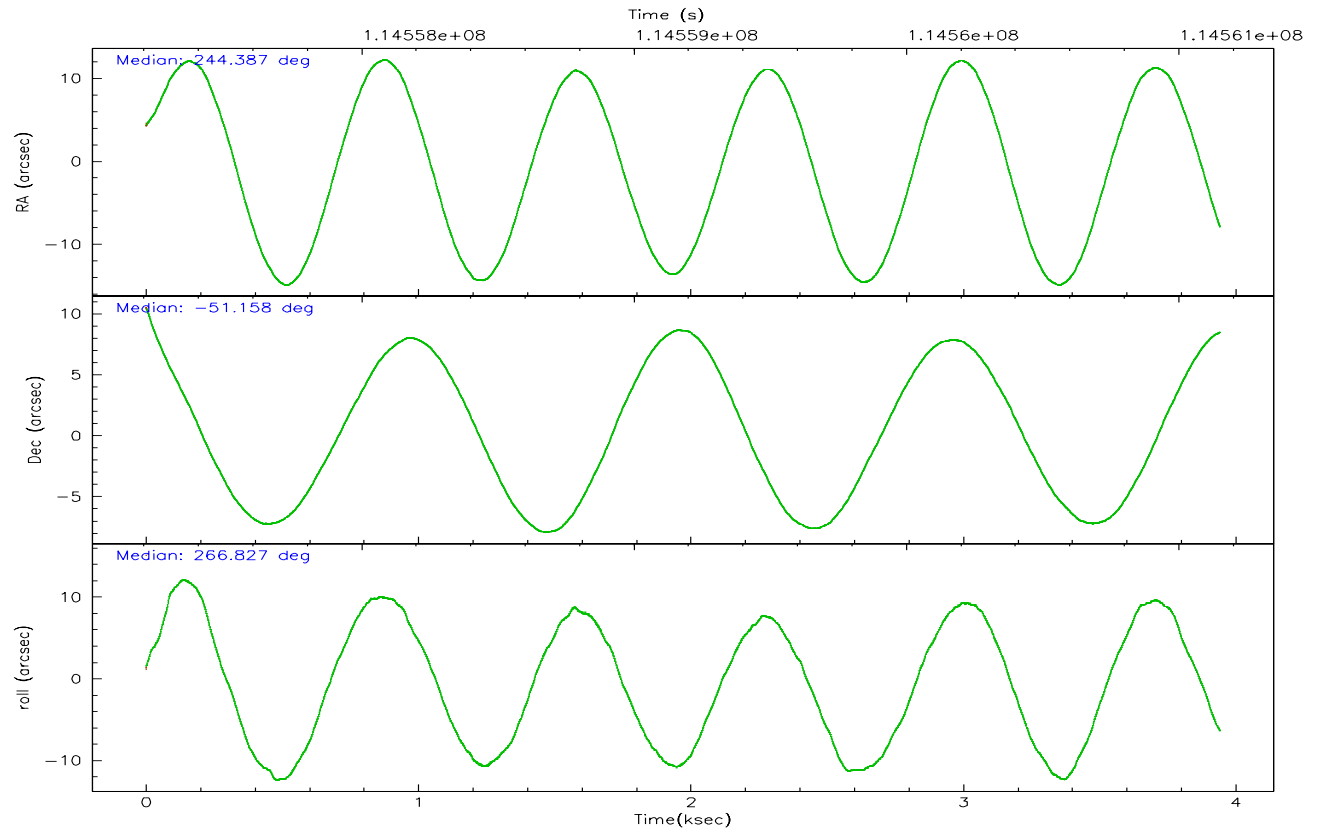
	ccd 3
grade 0 events	14992
	53%
grade 1 events	38
	0%
grade 2 events	1718
	6%
grade 3 events	597
	2%
grade 4 events	573
	2%
grade 5 events	283
	1%
grade 6 events	449
	1%
grade 7 events	9158
	32%

2.2 Compared Parameters

Parameter	Planned	Actual	Parameter	Planned	Actual
Instrument	ACIS	ACIS	Obspar format version number	6	6
Detector	ACIS-3	ACIS-3	Obspar file type	PREDICTED	ACTUAL
Grating	NONE	NONE	Obspar update status	NONE	UPDATED
Data mode	VFAINT	VFAINT	Number of optional ACIS chips dropped	0	0
Observation mode	POINTING	POINTING	On-chip summing requested	N	N
Pointing RA	244.367578	244.3875772690535	Subarray requested	CUSTOM	1/4
Pointing Dec	-51.133109	-51.15761442923851	Subarray start row	1	1
Pointing Roll	266.607049	266.8313120977455	Subarray row count	256	256
Window start time	113616064.184000	113616064.184000	Alternating exposures requested	N	N
Window stop time	115344064.184000	115344064.184000	Primary exposure time	0.000000	0.8
SIM focus pos (mm)	-0.782348	-0.7809083437167272			
SIM defocus (mm)	0	0.001439871863259334			
SIM translation stage pos (mm)	-233.592463	-233.5874344608287			
SIM translation stage offset (mm)	0	-0.005018542100998502			
Observation start time	114557650.184000	114556566.54742			
Observation start date	2001-08-18T21:33:06	2001-08-18T21:16:06			
Observation end time	114561150.184000	114561466.56011			
Observation end date	2001-08-18T22:31:26	2001-08-18T22:37:46			
Read mode	TIMED	TIMED			

2.3 Aspect



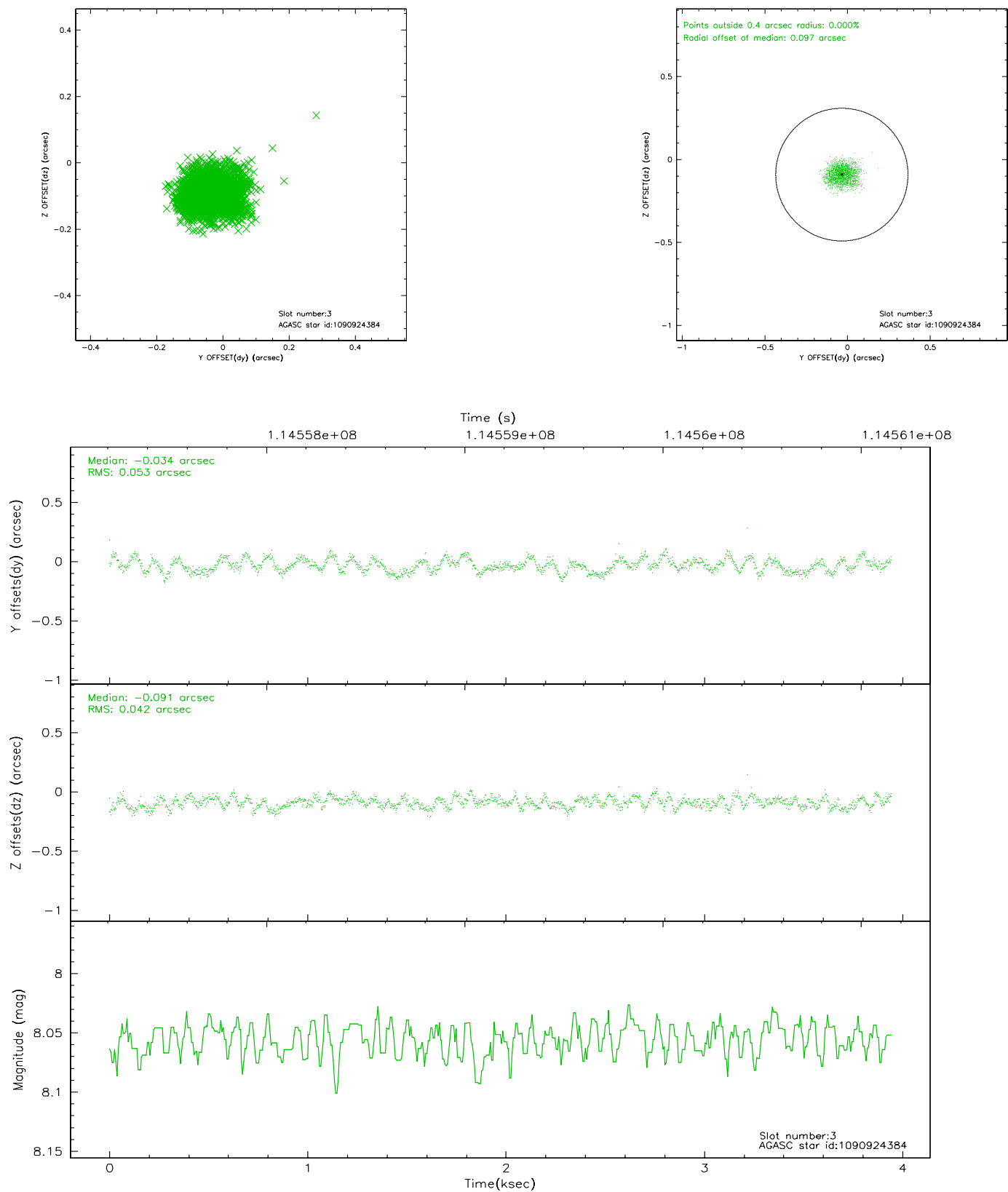


Slot Statistics

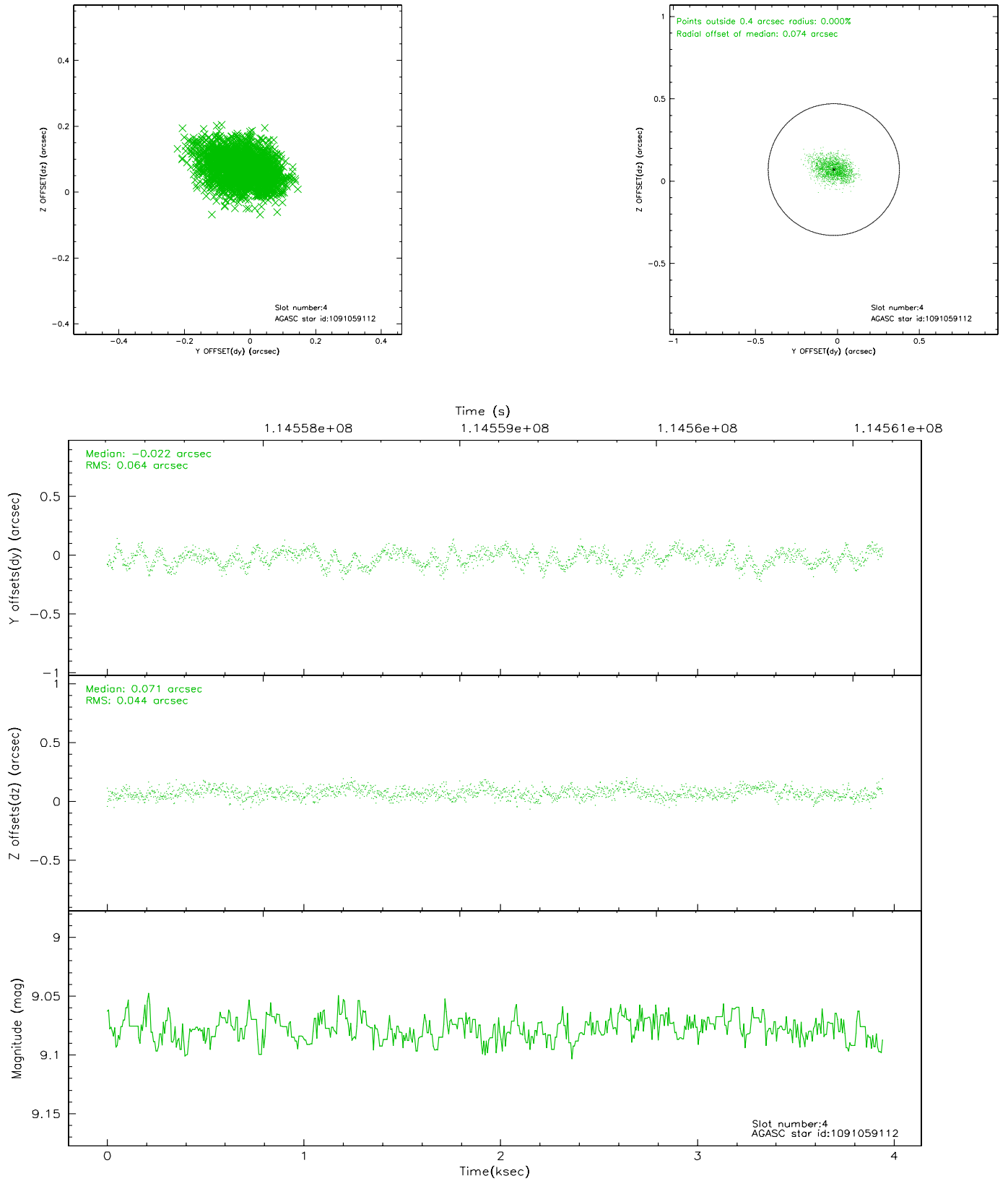
slot	status	id	mag	n_pts	med_dy	med_dz	dr1	dr2	ra	dec	mean_y	mean_z
0	FID	ACIS-I-1	7.25	962	-0.031	0.048	0.008	0.014	0.000000	0.000000	938.16	-829.78
1	FID	ACIS-I-5	7.23	961	-0.011	0.036	0.006	0.011	0.000000	0.000000	-1809.00	1066.96
2	FID	ACIS-I-6	7.27	962	-0.050	-0.014	0.008	0.012	0.000000	0.000000	402.02	1713.17
3	GUIDE	1090924384	8.06	1923	-0.034	-0.091	0.073	0.110	243.330505	-50.934017	-559.95	-2389.95
4	GUIDE	1091059112	9.08	1923	-0.022	0.071	0.082	0.134	245.180420	-50.736664	-1524.96	1763.95
5	GUIDE	1090922592	8.67	1922	0.015	-0.153	0.109	0.158	243.541382	-50.784876	-1129.98	-1949.58
6	GUIDE	1091052648	9.17	1924	0.000	0.060	0.075	0.119	245.027635	-50.830698	-1169.98	1433.53
7	GUIDE	1091061384	9.34	1921	0.043	0.117	0.095	0.150	245.043918	-51.237076	289.35	1545.58

2.4 Star Slots

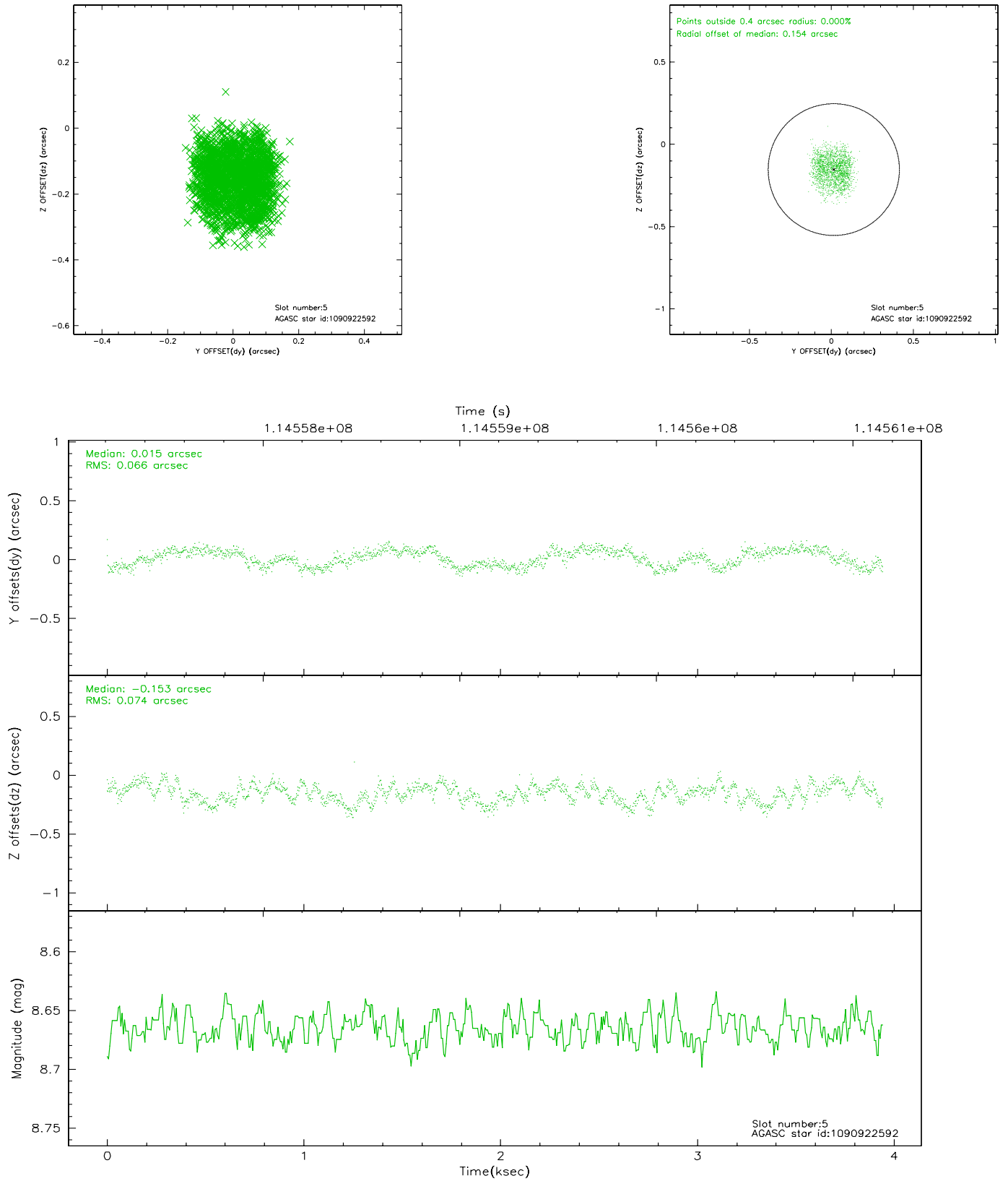
2.4.1 Slot 3



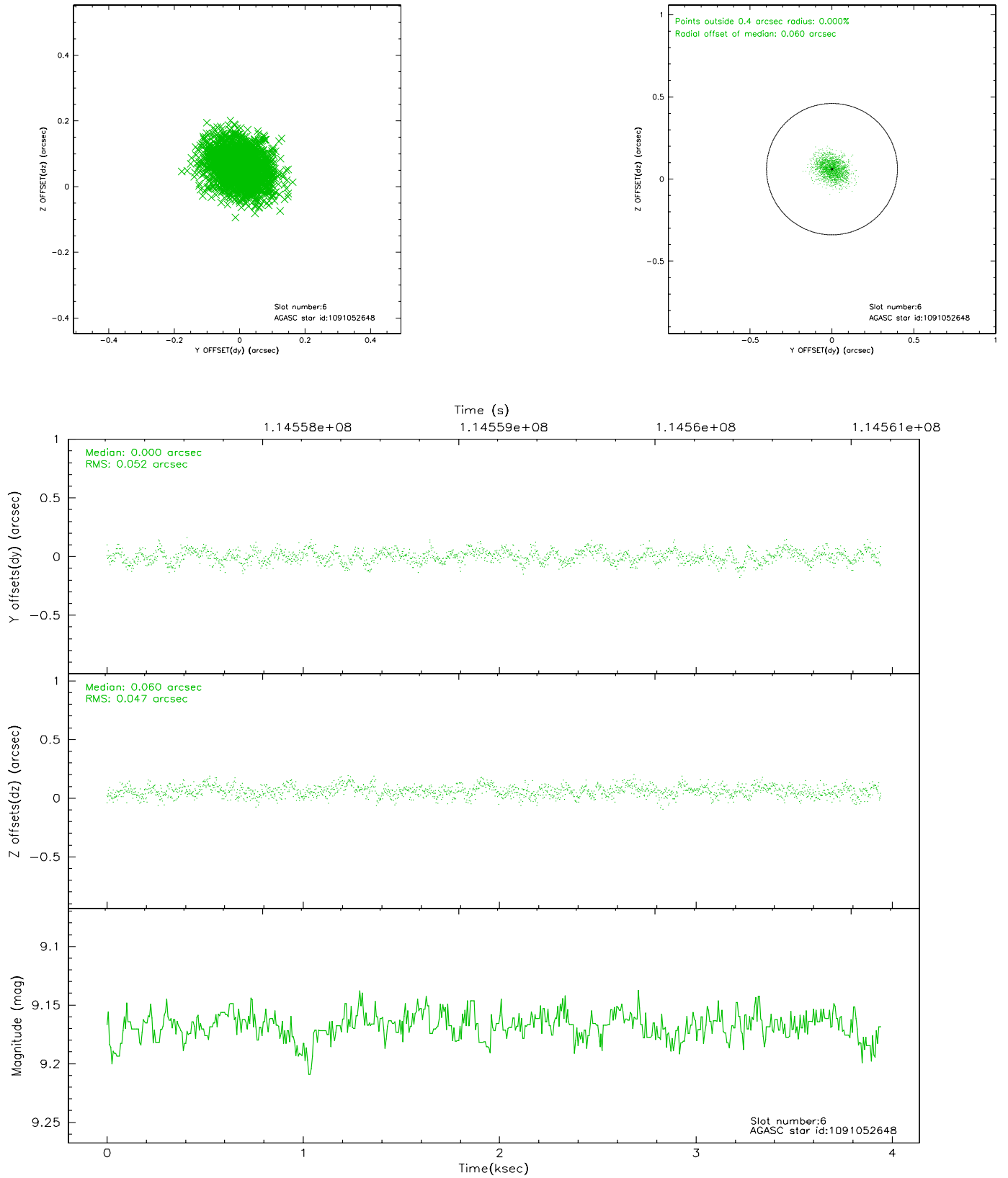
2.4.2 Slot 4



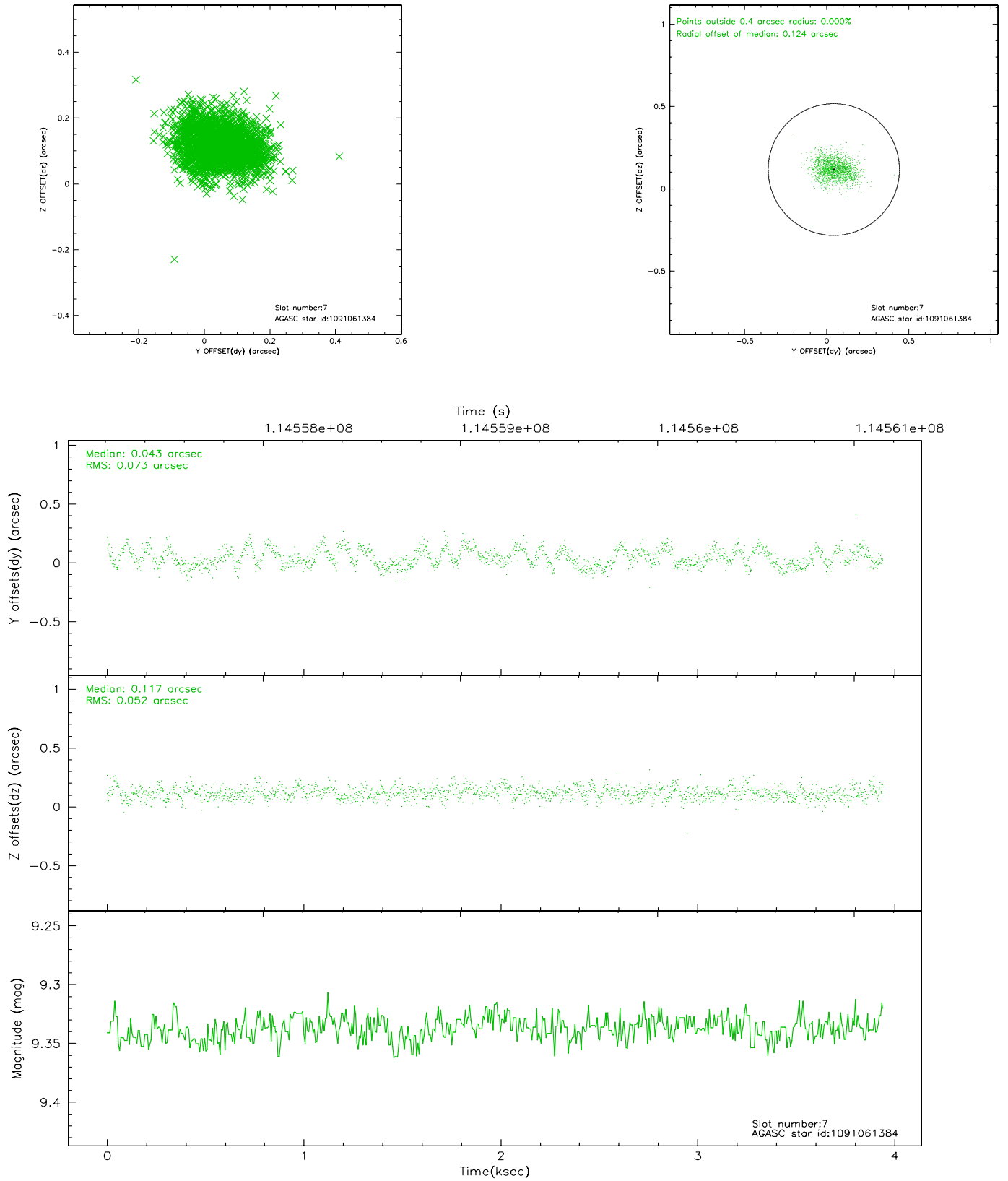
2.4.3 Slot 5



2.4.4 Slot 6

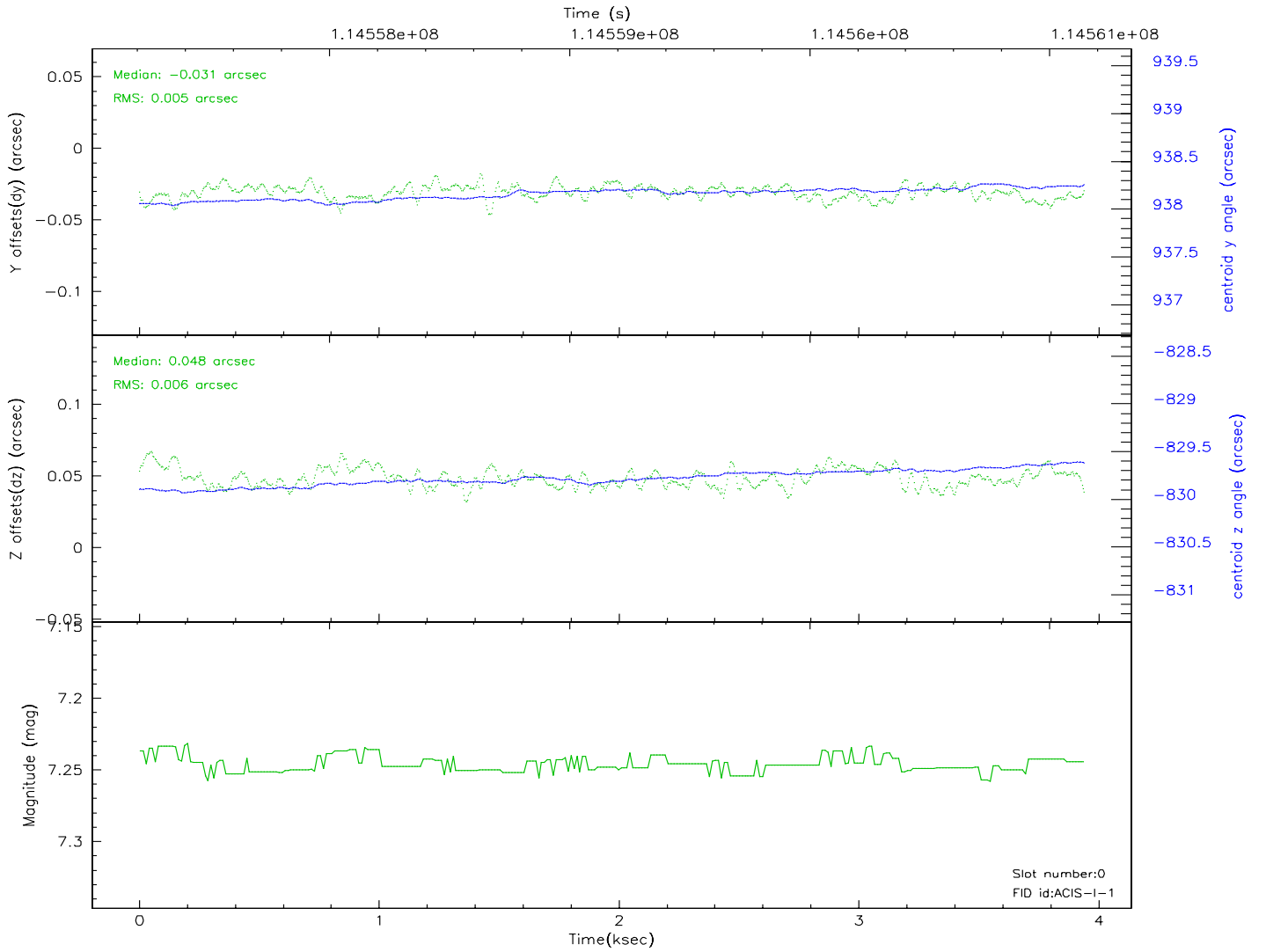
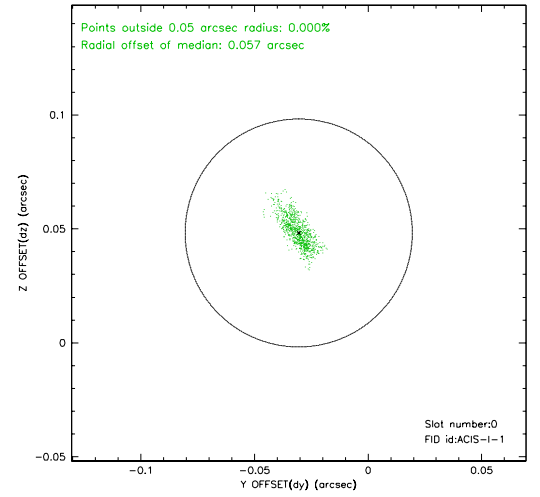
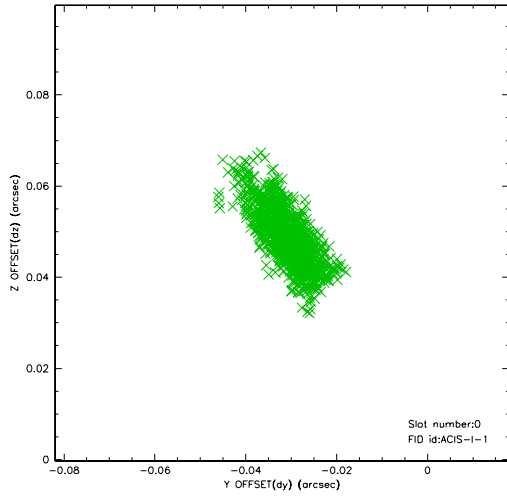


2.4.5 Slot 7

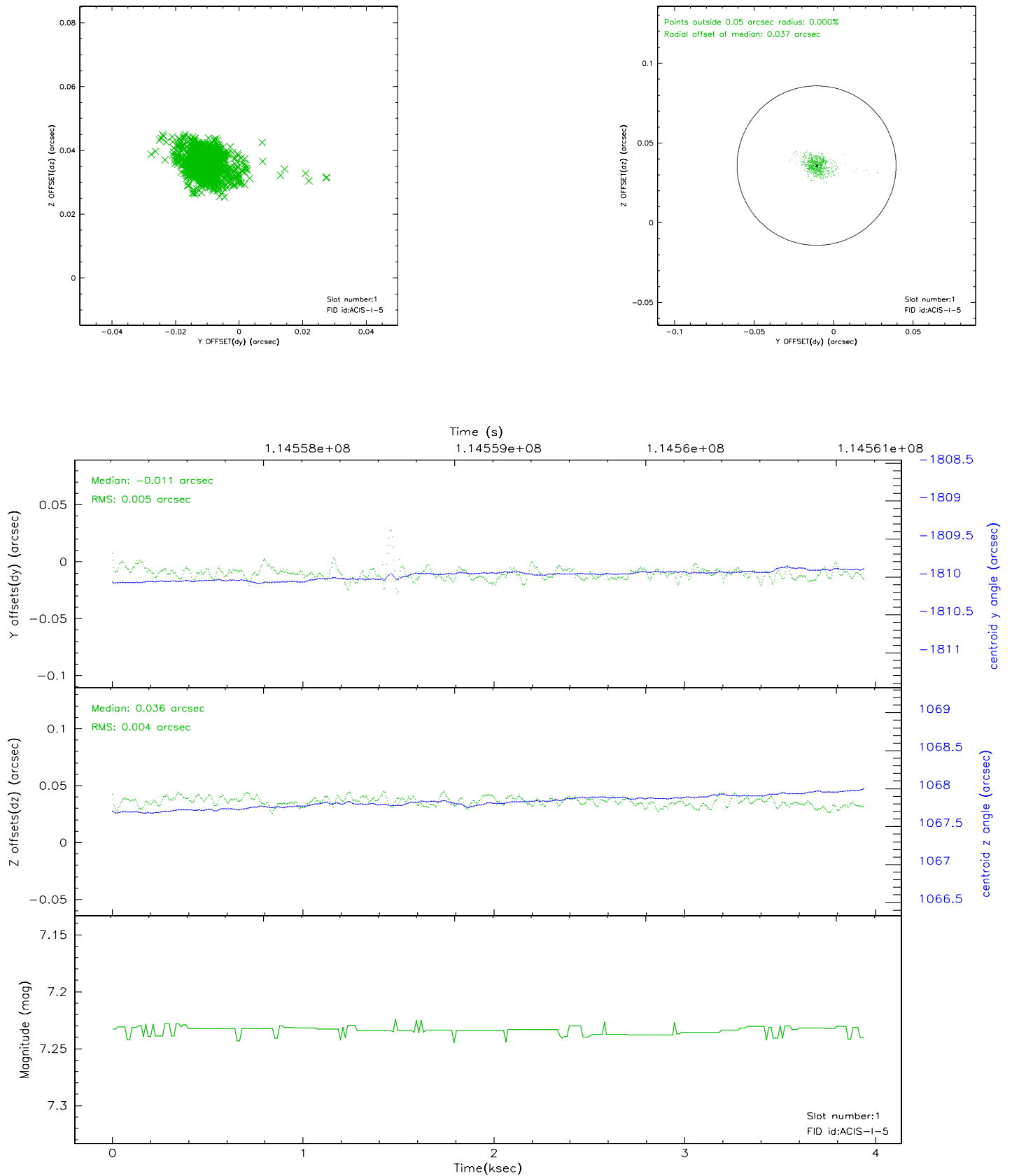


2.5 FID Slots

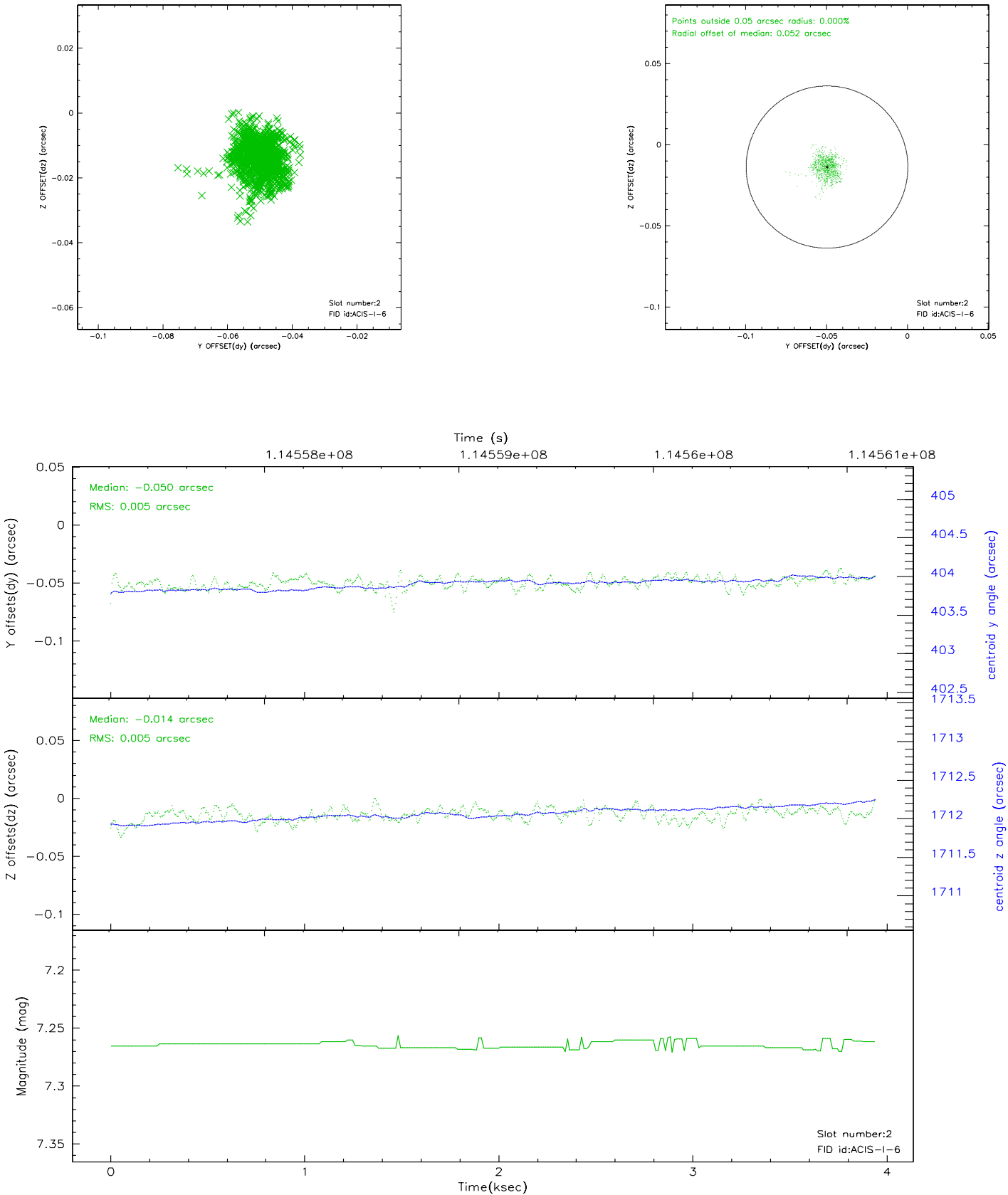
2.5.1 Slot 0



2.5.2 Slot 1

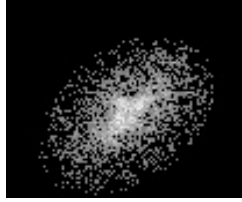


2.5.3 Slot 2



3 Point Sources

7.06 arcmin



A Summary

A.1 Status

V&V Scientist	Jen Lauer
V&V Date (YYYY-MM-DD)	2006.12.21
V&V Edition	1
V&V Disposition and Status	OK
V&V Charge Time	3.941

A.2 Comments

Window constraint met.

Source is off-axis and therefore extended and asymmetric.