

V&V Reference Report

L2 ASCDS Version : 8.4.5

Observation 2316 - L2 Version 3
Chandra X-Ray Center

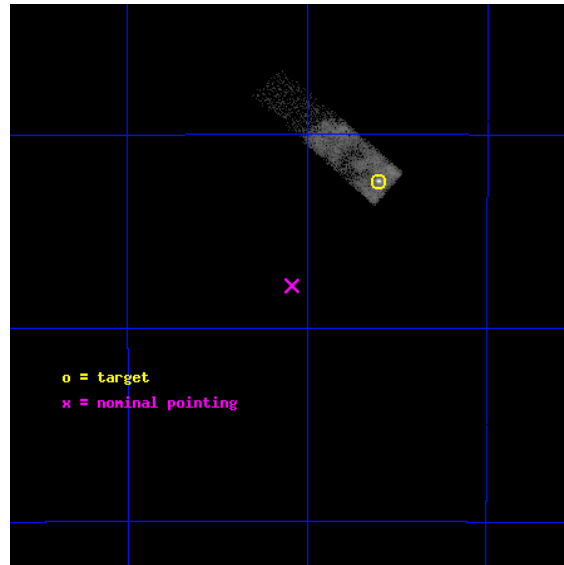
L2 Processing Date : Sep 20 2012

Contents

1	Front	2
2	OBI	3
2.1	OBI	3
2.1.1	Images	3
2.1.2	Bias	3
2.1.3	Parameters	4
2.1.4	Events	4
2.2	Compared Parameters	5
2.3	Aspect	6
2.4	Star Slots	9
2.4.1	Slot 3	9
2.4.2	Slot 4	10
2.4.3	Slot 5	11
2.4.4	Slot 6	12
2.4.5	Slot 7	13
2.5	FID Slots	14
2.5.1	Slot 0	14
2.5.2	Slot 1	15
2.5.3	Slot 2	16
A	Summary	17
A.1	Status	17
A.2	Comments	17

1 Front

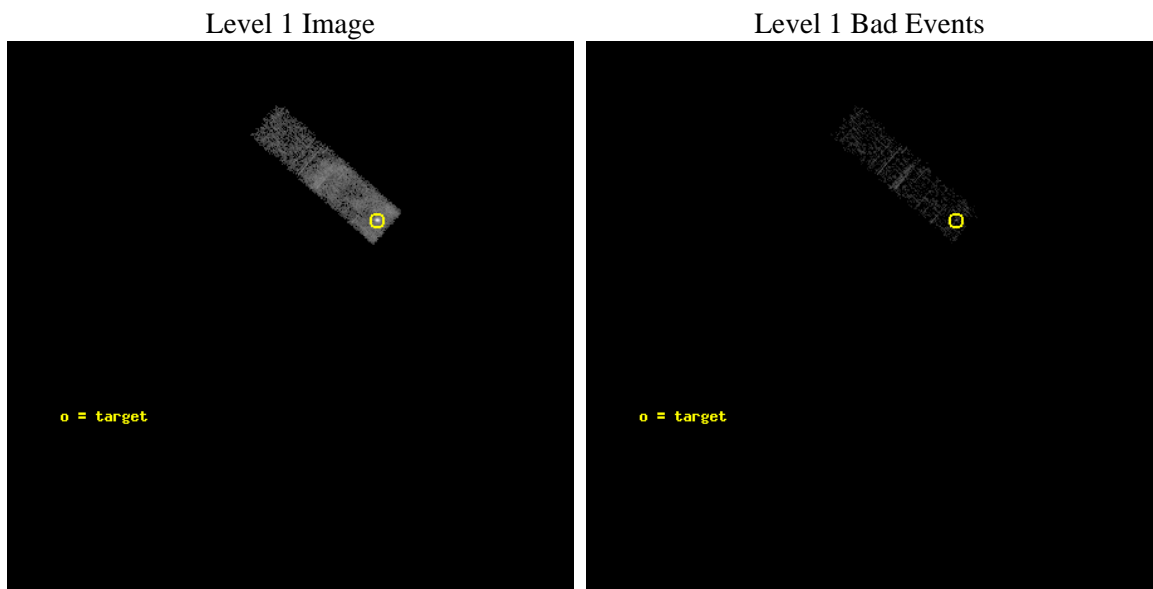
seq_num	500193	Sequence number
obs_id	2316	Observation id
title	OBSERVATION OF SNR RCW103	Proposal title
observer	Professor Gordon Garmire	Principal investigator
object	RCW103	Source name
dtcycle	0	
cycle	P	events from which exps? Prim/Second/Both
ra_targ	244.401292	Observer's specified target RA [deg]
dec_targ	-51.0402	Observer's specified target Dec [deg]
ra_nom	244.52158737368	Nominal RA [deg]
dec_nom	-51.130429609278	Nominal Dec [deg]
roll_nom	311.11603588321	Nominal Roll [deg]
revision	3	Processing version of data
ontime	4076.7999848276	Sum of GTIs [s]
livetime	3877.8654854253	Livetime [s]
ontime3	4076.7999848276	Sum of GTIs [s]
l2events	14452	Number of level 2 events



2 OBI

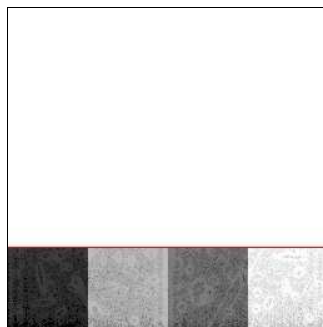
2.1 OBI

2.1.1 Images



2.1.2 Bias

Chip 3



2.1.3 Parameters

obi_num	0	Obi number	sched_exp_time	3500.000000	[s] Scheduled observation exposure time
ascdsver	8.4.5	Processing system revision	ontime	4076.7999848276	Sum of GTIs [s]
caldsver	4.5.1.1	 	ontime3	4076.7999848276	Sum of GTIs [s]
date	2012-09-20T04:45:15	Date and time of file creation	l1events	23500	Number of level 1 events
revision	3	Processing version of data			

2.1.4 Events

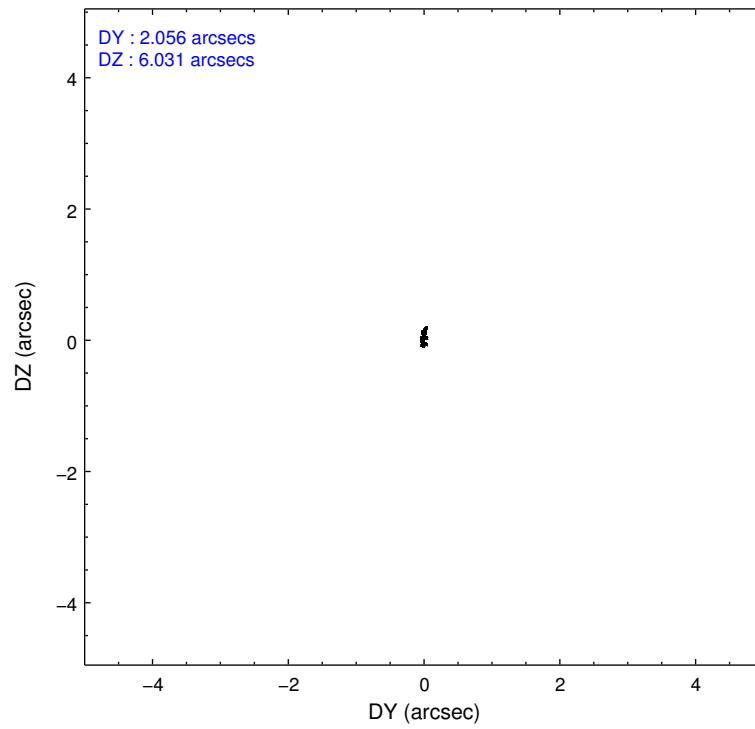
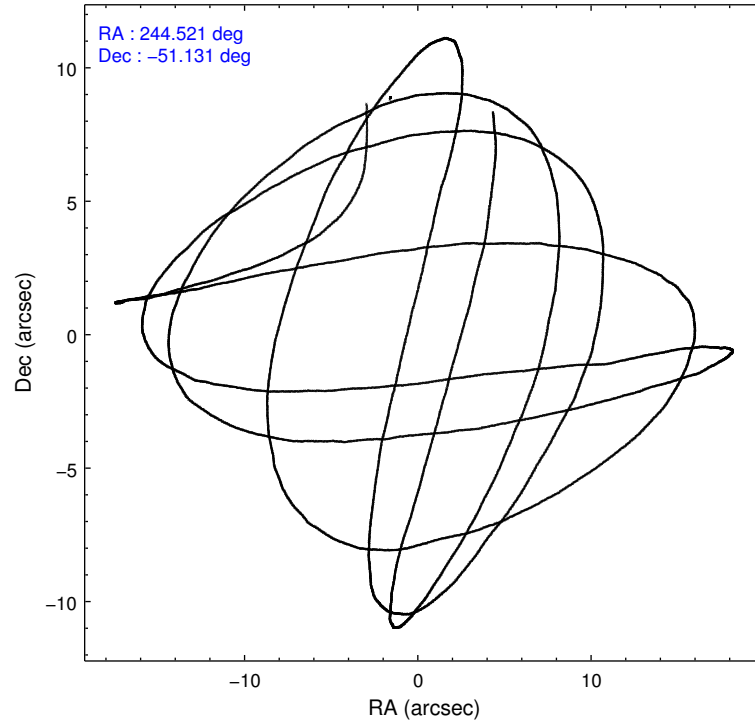
	ccd 3
level 1 events	23500
rejected events	8683
rejected %	36%

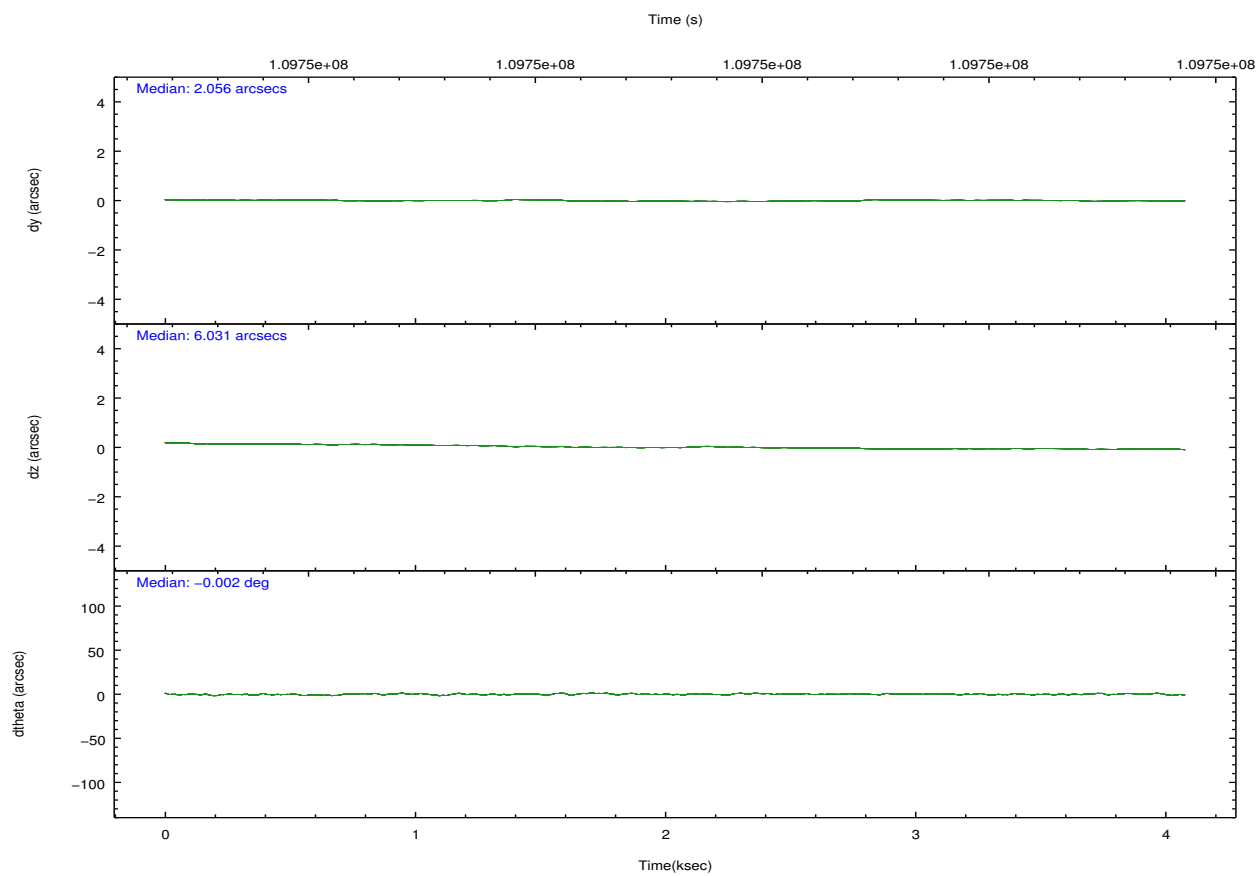
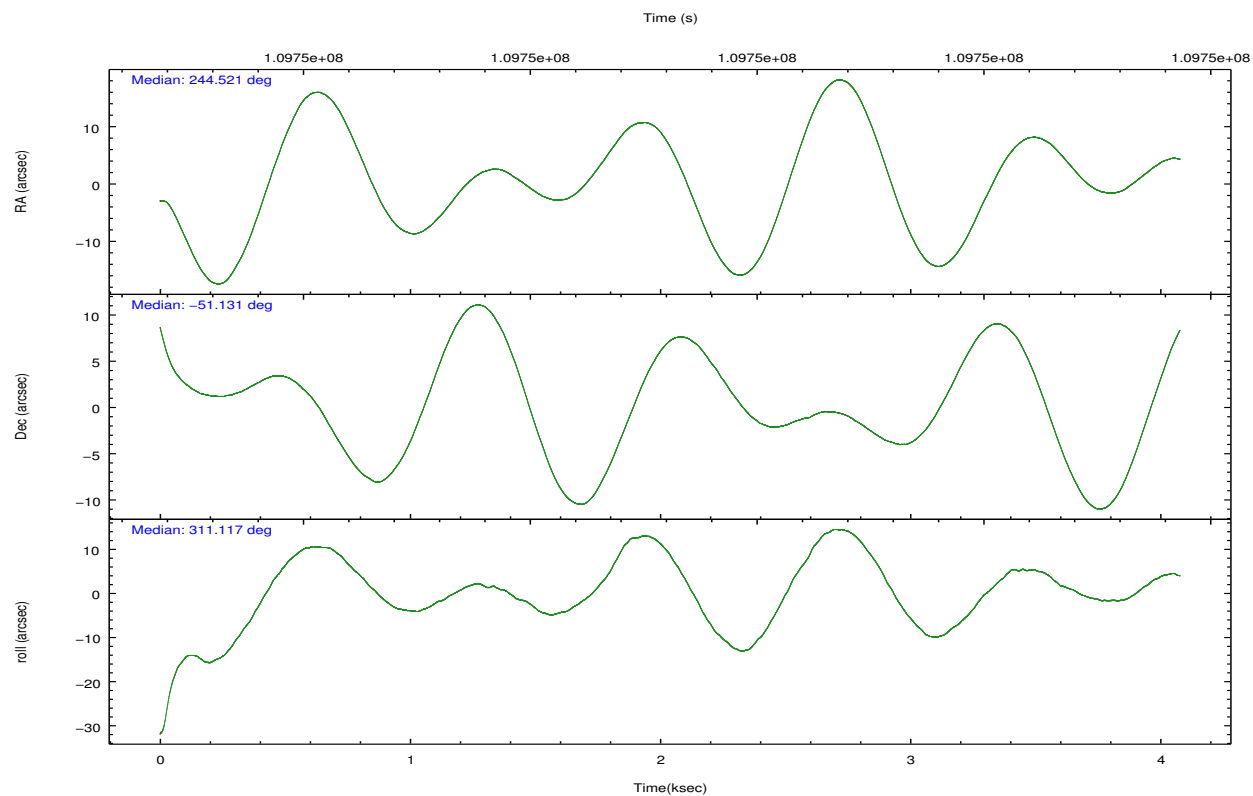
	ccd 3
grade 0 events	12269
	52%
grade 1 events	43
	0%
grade 2 events	1512
	6%
grade 3 events	571
	2%
grade 4 events	555
	2%
grade 5 events	303
	1%
grade 6 events	375
	1%
grade 7 events	7872
	33%

2.2 Compared Parameters

Parameter	Planned	Actual	Parameter	Planned	Actual
Instrument	ACIS	ACIS	Obspar format version number	7	7
Detector	ACIS-3	ACIS-3	Obspar file type	PREDICTED	ACTUAL
Grating	NONE	NONE	Obspar update status	NONE	UPDATED
Data mode	VFAINT	VFAINT	Number of optional ACIS chips dropped	0	0
Observation mode	POINTING	POINTING	On-chip summing requested	N	N
[deg] Pointing RA	244.480285	244.521587373681	Subarray requested	CUSTOM	1/4
[deg] Pointing Dec	-51.121543	-51.13042960927837	Subarray start row	1	1
[deg] Pointing Roll	310.875244	311.1160358832134	Subarray row count	256	256
[s] Window start time (MET)	109036864.184000	109036864.184000	Alternating exposures requested	N	N
[s] Window stop time (MET)	110678464.184000	110678464.184000	[s] Primary exposure time	0.000000	0.8
[mm] SIM focus pos	-0.782348	-0.7809083437167272			
[mm] SIM defocus	0	0.001439871863259334			
[mm] SIM translation stage pos	-233.592463	-233.5874344608287			
[mm] SIM translation stage offset	0	-0.005018542100998502			
[s] Observation start time (MET)	109747154.184000	109746004.07127			
Observation start date	2001-06-24T05:18:10	2001-06-24T05:00:04			
[s] Observation end time (MET)	109750654.184000	109751180.83397			
Observation end date	2001-06-24T06:16:30	2001-06-24T06:26:20			
Read mode	TIMED	TIMED			

2.3 Aspect



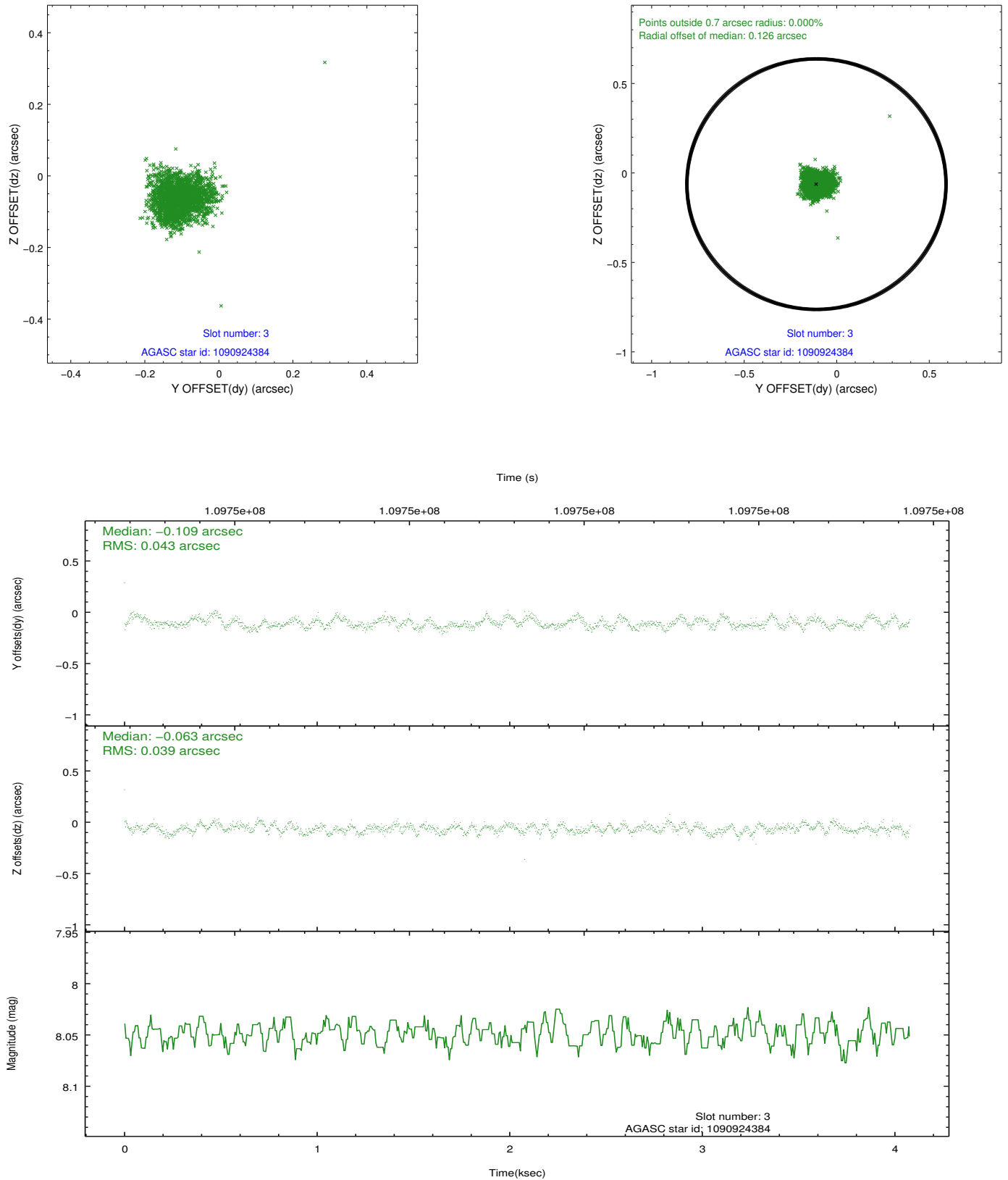


Slot Statistics

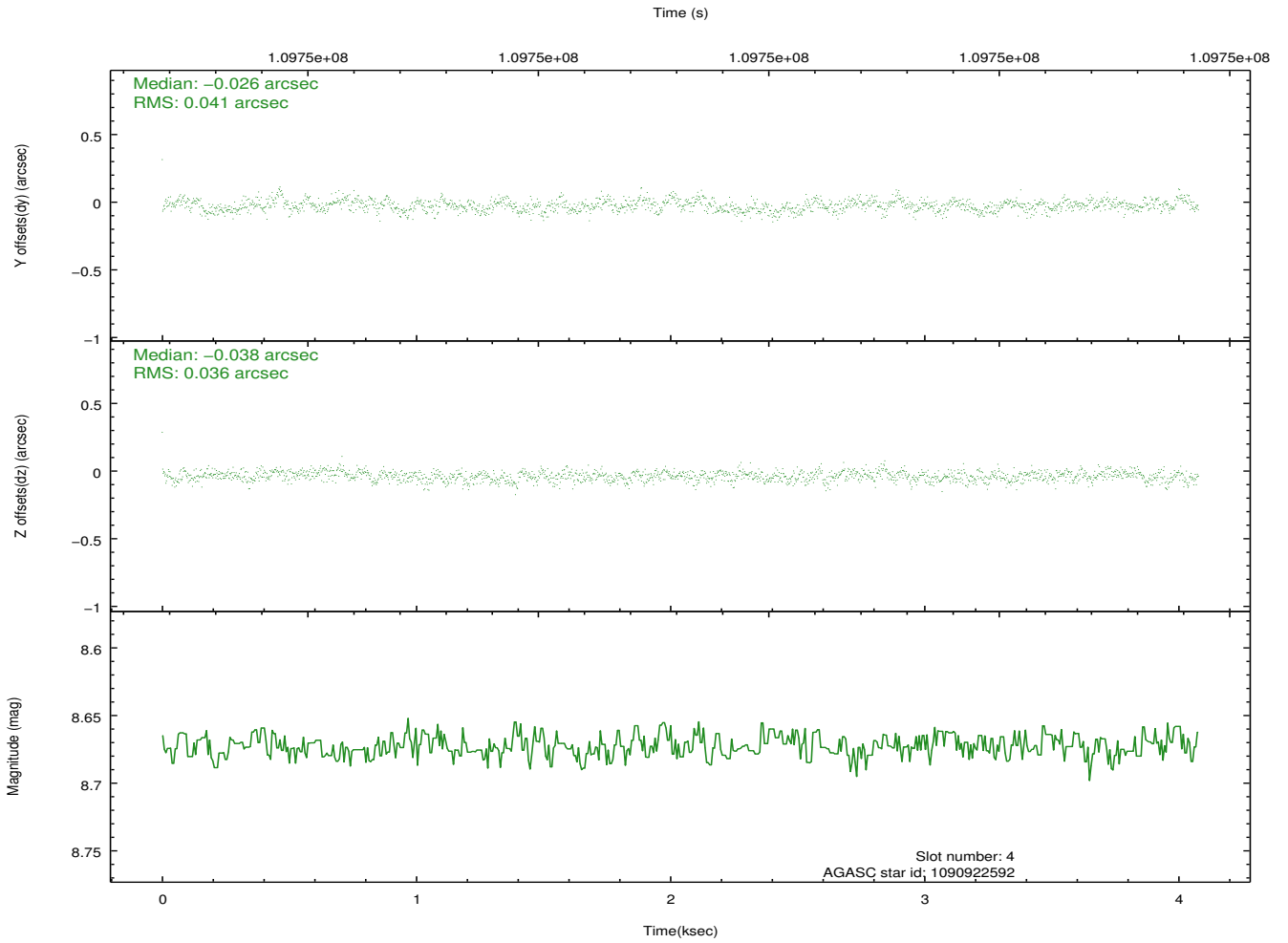
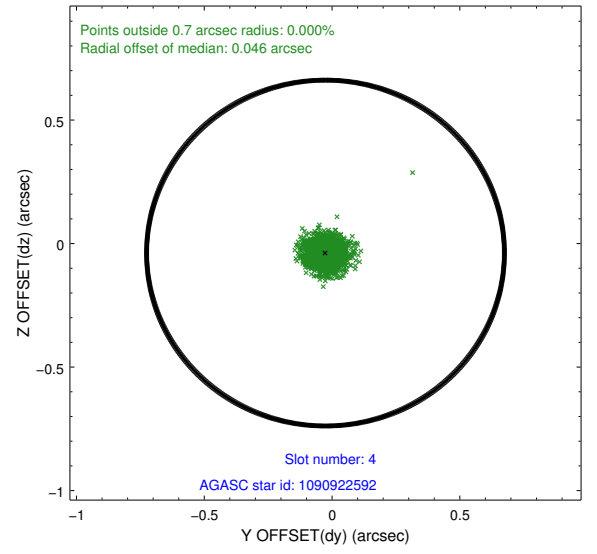
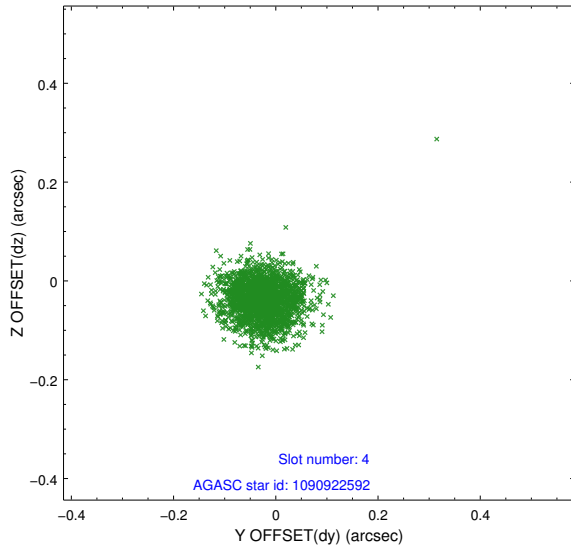
slot	status	id	mag	n_pts	med_dy	med_dz	dr1	dr2	ra	dec	mean_y	mean_z
0	FID	ACIS-I-3	7.44	995	-0.023	0.138	0.008	0.016	0.000000	0.000000	55.15	-962.51
1	FID	ACIS-I-4	7.18	995	-0.018	-0.037	0.007	0.012	0.000000	0.000000	2157.76	1069.45
2	FID	ACIS-I-5	7.23	995	-0.058	-0.032	0.007	0.013	0.000000	0.000000	-1808.32	1069.19
3	GUIDE	1090924384	8.05	1990	-0.109	-0.063	0.060	0.095	243.330505	-50.934017	-2201.98	-1542.81
4	GUIDE	1090922592	8.67	1990	-0.026	-0.038	0.058	0.094	243.541382	-50.784876	-2304.91	-831.54
5	GUIDE	1091057912	9.15	1990	-0.029	-0.055	0.076	0.121	245.642757	-51.112070	1708.40	1995.95
6	GUIDE	1090916640	8.90	1990	-0.007	-0.023	0.060	0.101	244.322461	-51.464734	704.00	-1074.24
7	GUIDE	1091050248	9.91	1920	0.175	0.188	0.109	0.176	245.834867	-51.157860	2122.45	2209.44

2.4 Star Slots

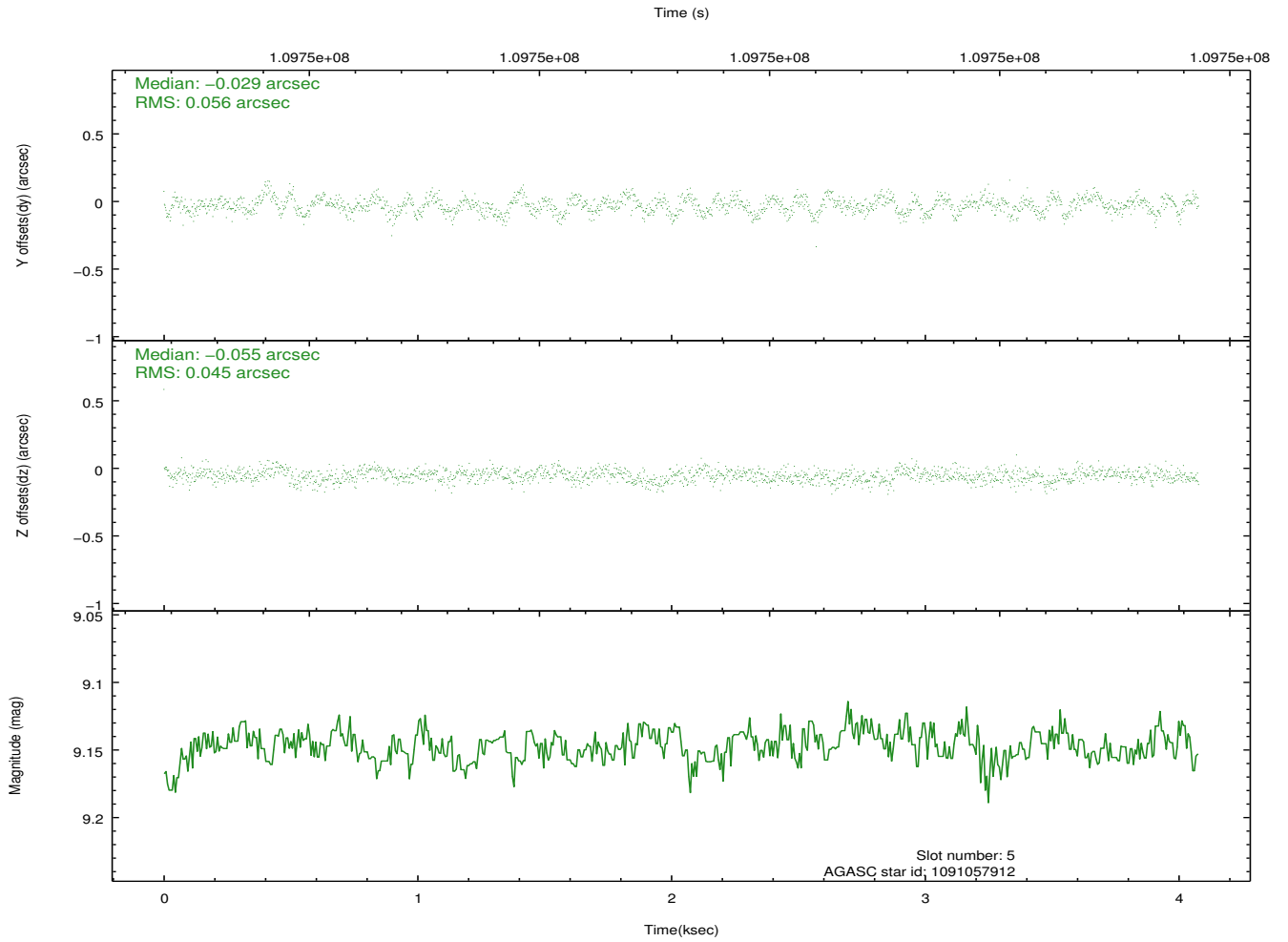
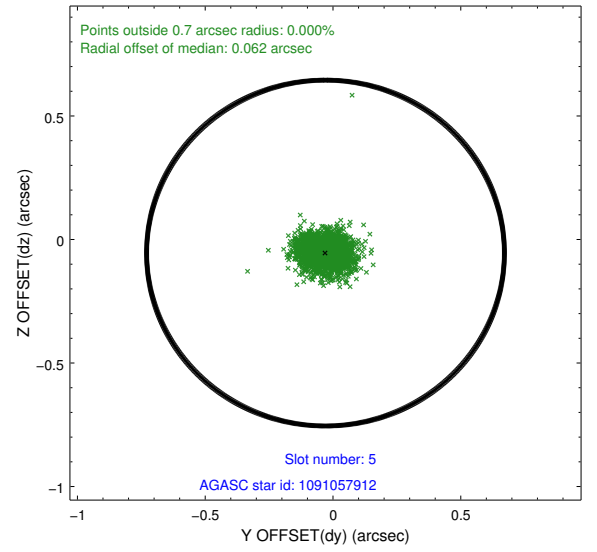
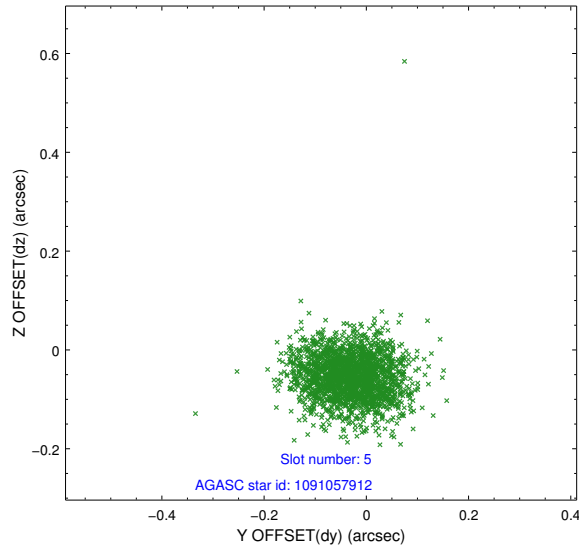
2.4.1 Slot 3



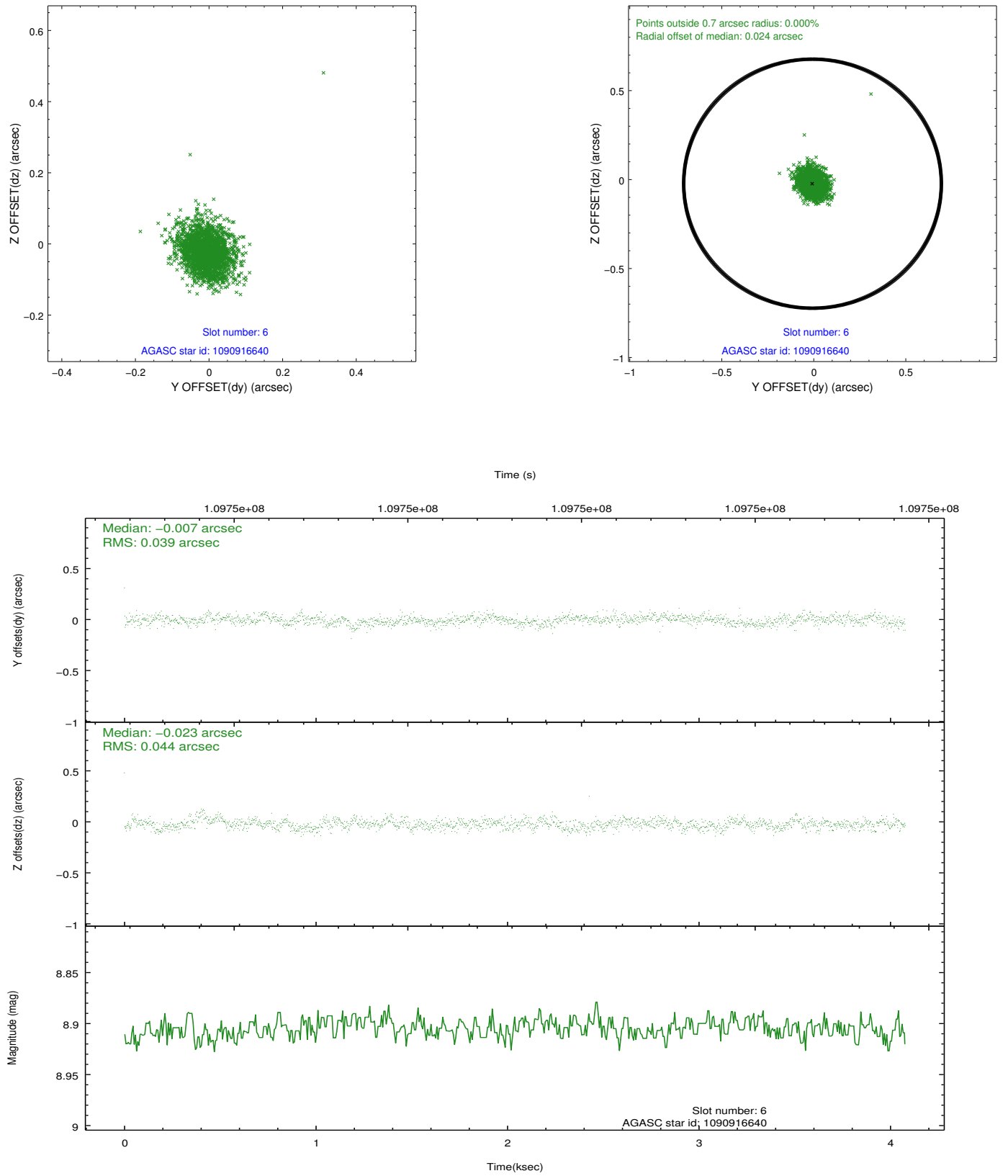
2.4.2 Slot 4



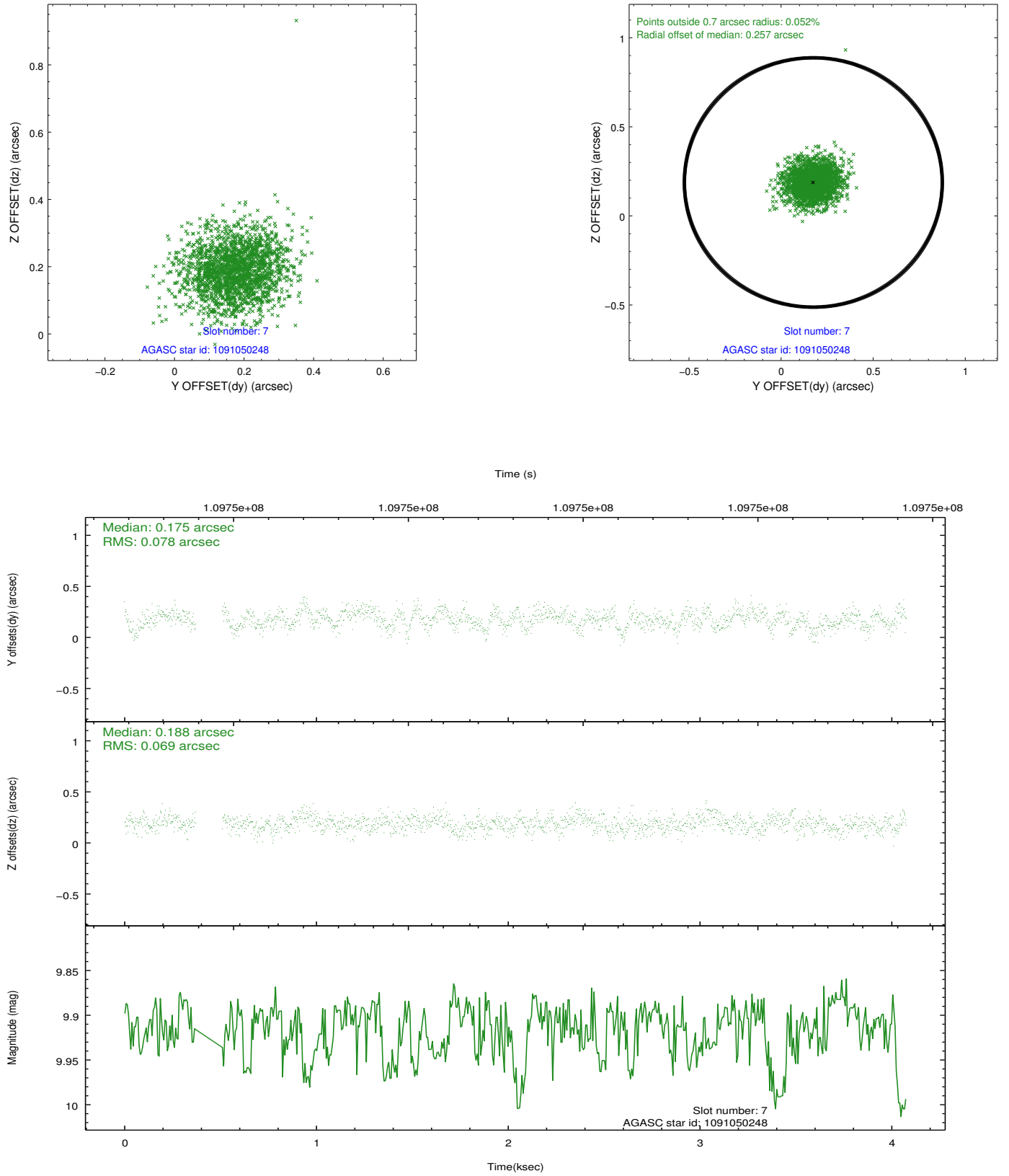
2.4.3 Slot 5



2.4.4 Slot 6

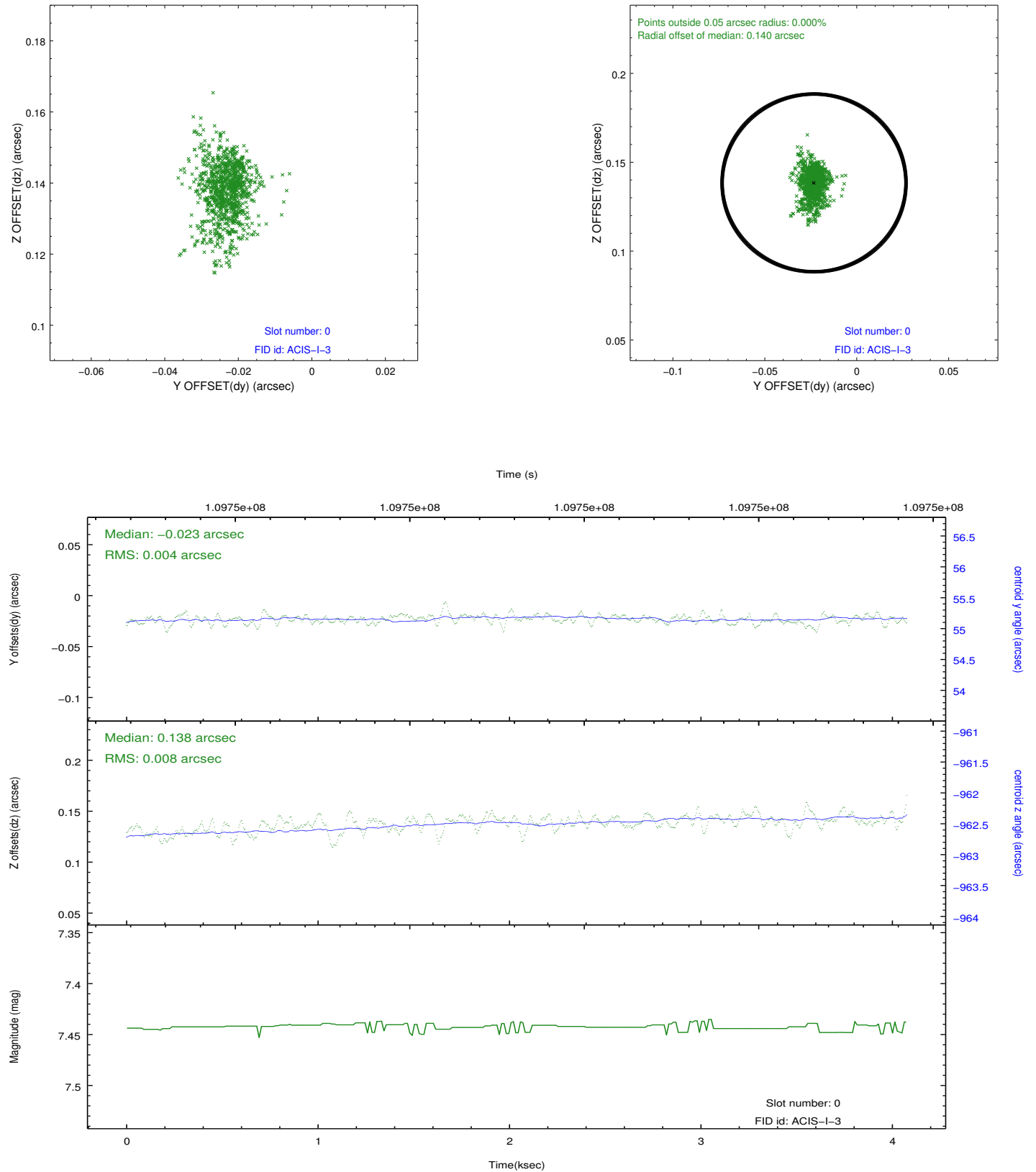


2.4.5 Slot 7

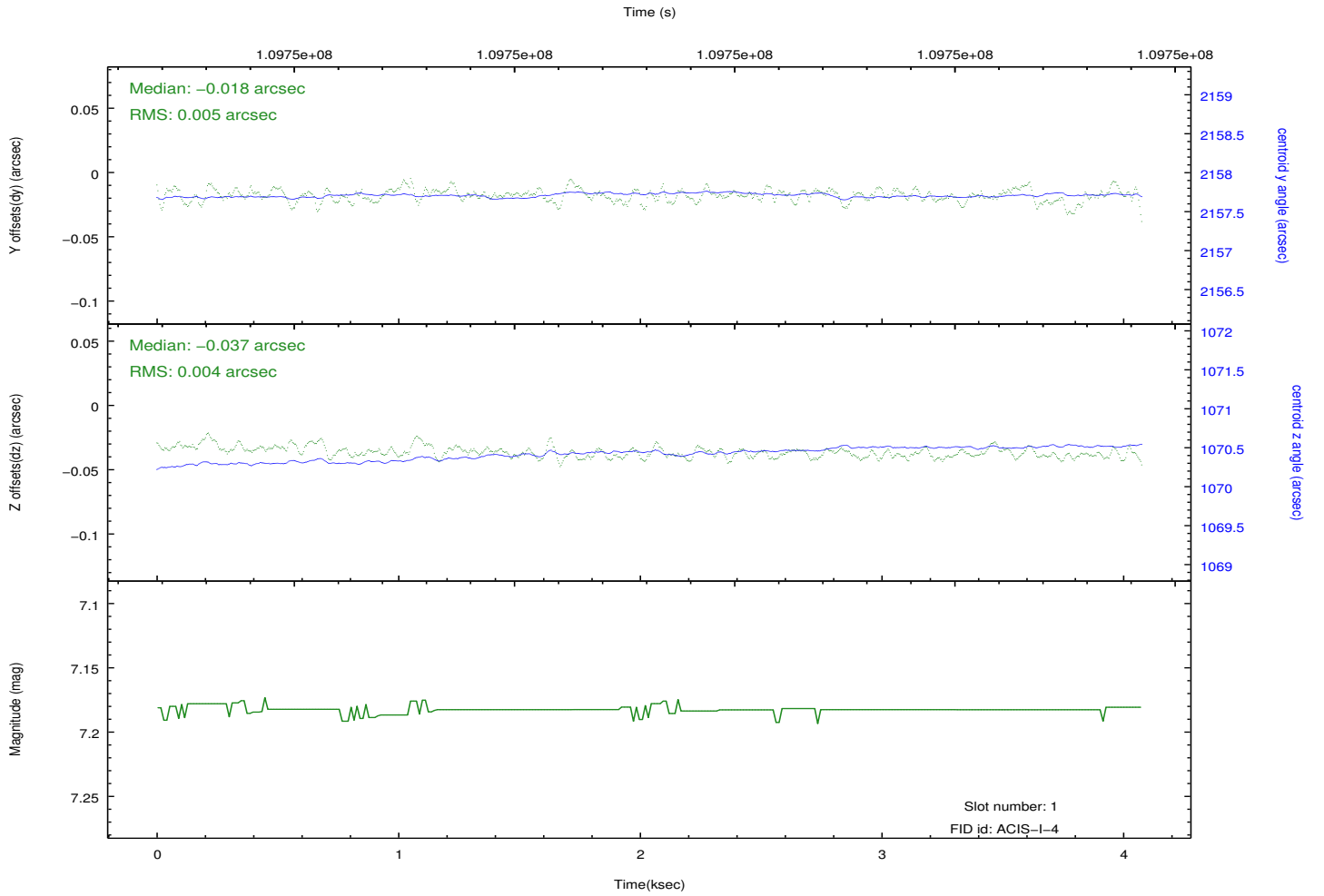
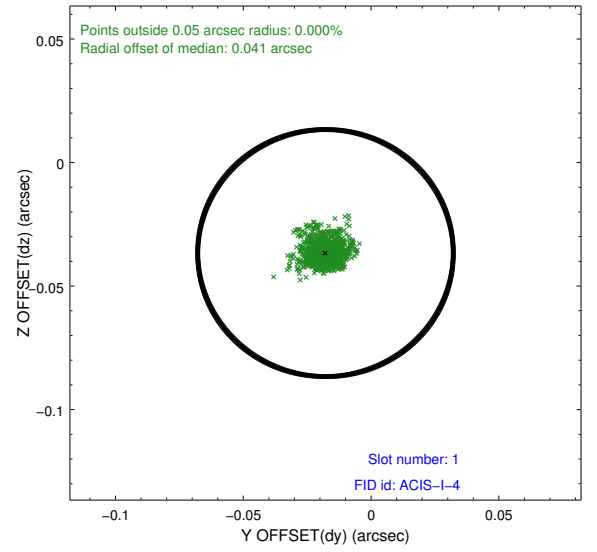
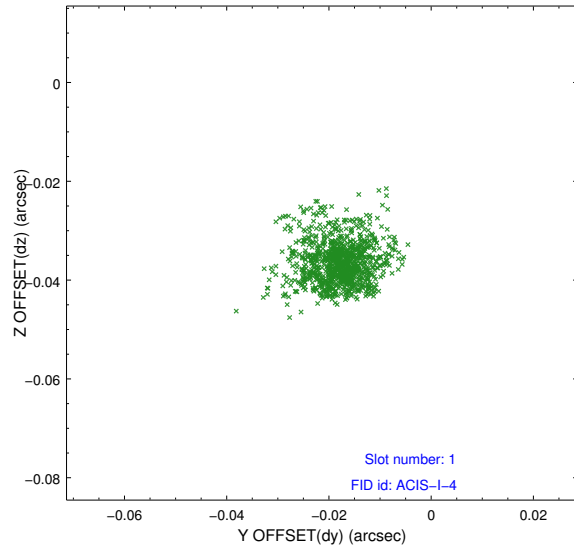


2.5 FID Slots

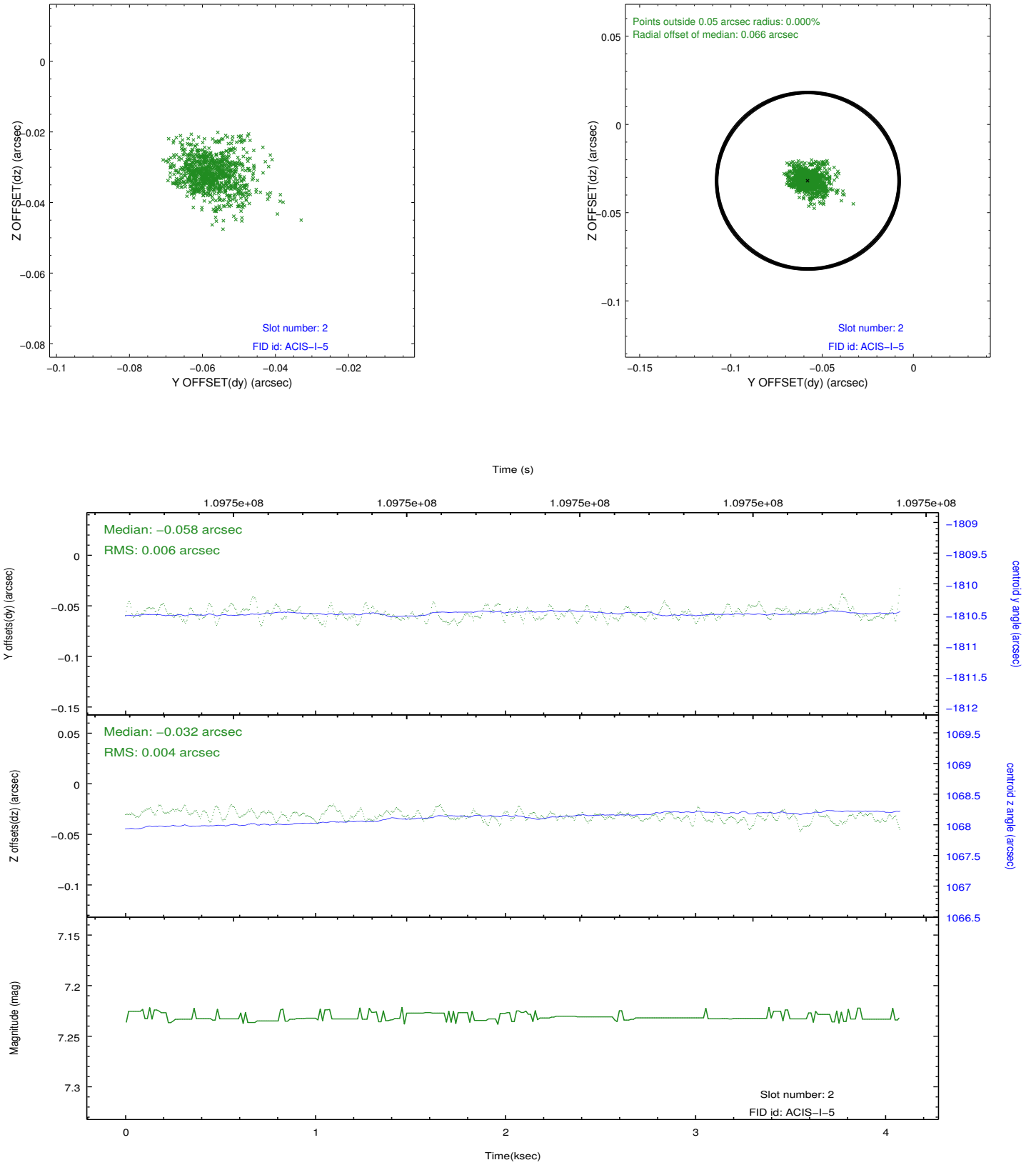
2.5.1 Slot 0



2.5.2 Slot 1



2.5.3 Slot 2



A Summary

A.1 Status

V&V Scientist	Jen Lauer
V&V Date (YYYY-MM-DD)	2012.09.21
V&V Edition	1
V&V Disposition and Status	OK
V&V Charge Time	4.076

A.2 Comments

Window constraint satisfied.