

V&V Reference Report

L2 ASCDS Version : 7.6.9

Observation 1988 - L2 Version 001
Chandra X-Ray Center

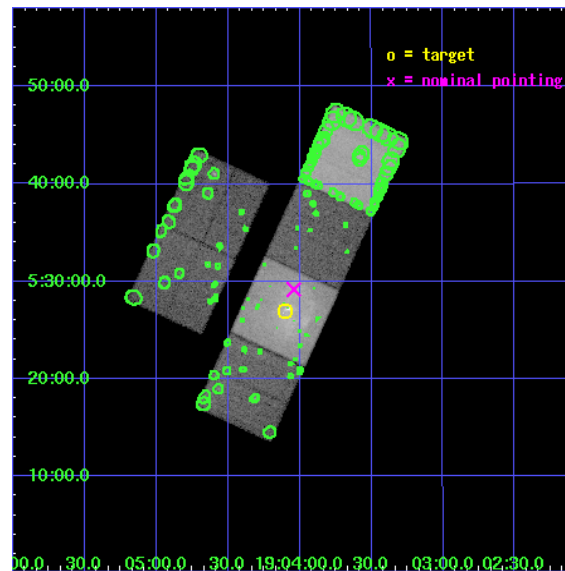
L2 Processing Date : Nov 21 2006

Contents

1	Front	2
2	OBI	3
2.1	OBI	3
2.1.1	Images	3
2.1.2	Bias	3
2.1.3	Parameters	4
2.1.4	Events	4
2.2	Compared Parameters	5
2.3	Aspect	6
2.4	Star Slots	9
2.4.1	Slot 3	9
2.4.2	Slot 4	10
2.4.3	Slot 5	11
2.4.4	Slot 6	12
2.4.5	Slot 7	13
2.5	FID Slots	14
2.5.1	Slot 0	14
2.5.2	Slot 1	15
2.5.3	Slot 2	16
3	Point Sources	17
A	Summary	18
A.1	Status	18
A.2	Comments	18

1 Front

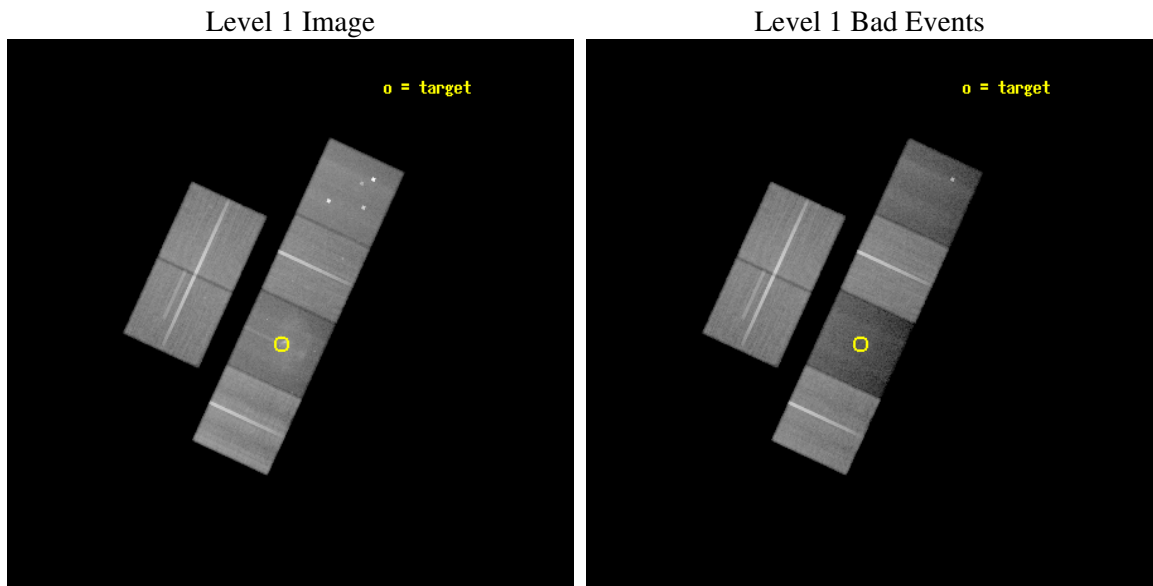
seq_num	500165
obs_id	1988
title	HIGH RESOLUTION X-RAY IMAGING OF SNR 3C 396
observer	Dr. Stephen Reynolds
object	3C396 (G39.2-0.3)
dtcycle	0
cycle	P
ra_targ	286.025
dec_targ	5.45
ra_nom	286.01024358155
dec_nom	5.4863002849338
roll_nom	114.70320440269
revision	2
ontime	99698.257249579
livetime	98435.817885201
ontime2	99701.498199865
ontime3	99753.35436137
ontime5	99766.318192363
ontime6	99769.559122667
ontime7	99698.257249579
ontime8	99769.559132665
l2events	512500



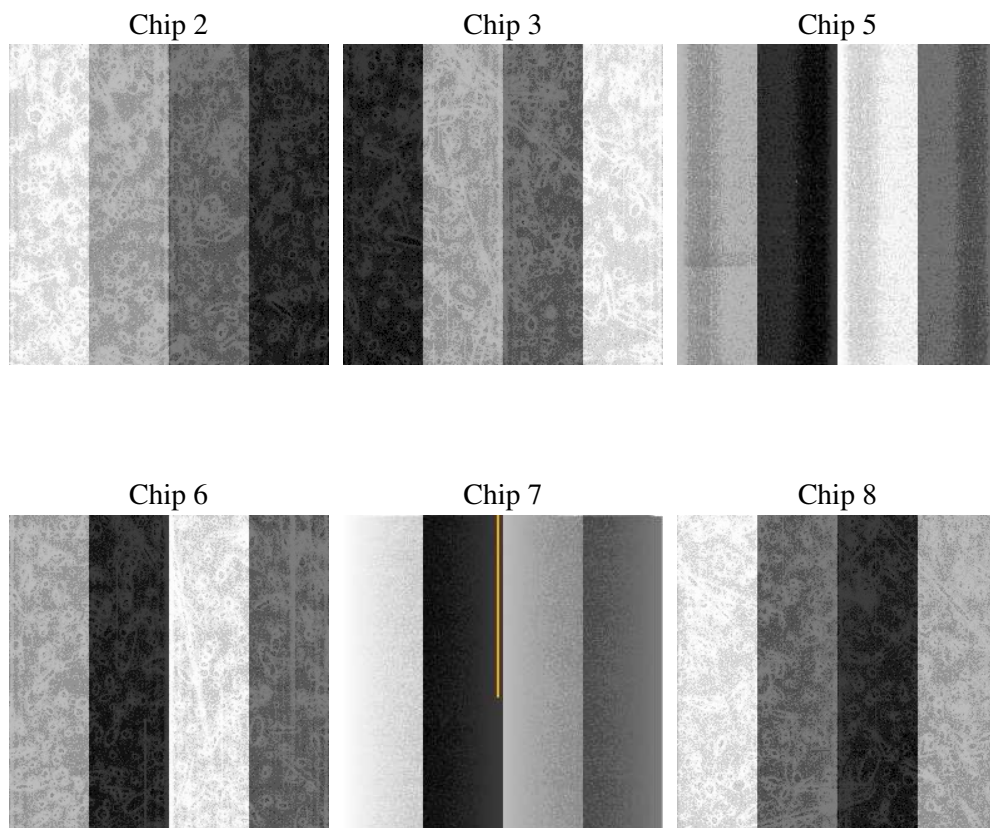
2 OBI

2.1 OBI

2.1.1 Images



2.1.2 Bias



2.1.3 Parameters

obi_num	0
ascdsver	7.6.9
caldsver	3.2.4
date	2006-11-21T17:27:05
revision	2

sched_exp_time	100000.000000
ontime	99702.860511929
ontime2	99706.101462215
ontime3	99757.95762372
ontime5	99770.921474636
ontime6	99774.162385017
ontime7	99702.860511929
ontime8	99774.162395015
l1events	2640533

2.1.4 Events

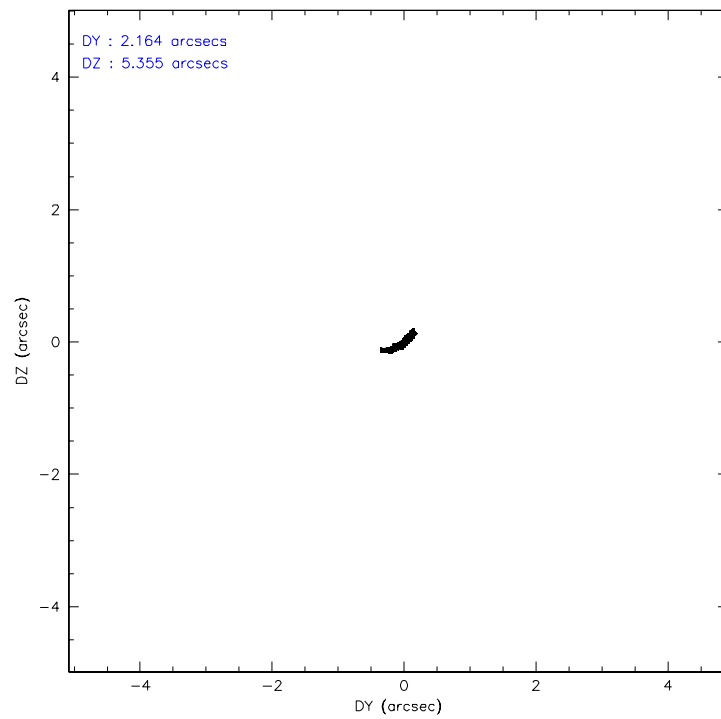
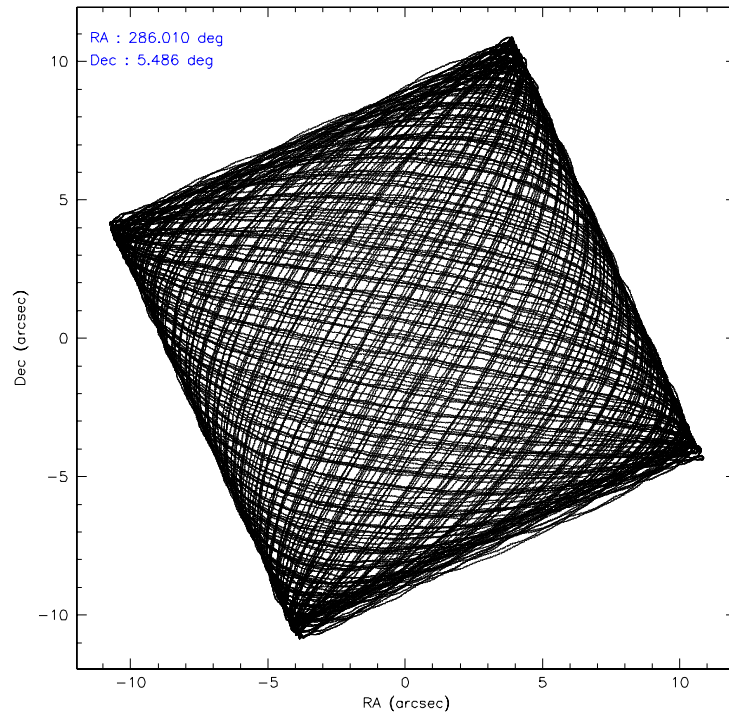
	ccd 2	ccd 3	ccd 5	ccd 6	ccd 7	ccd 8
level 1 events	497249	452486	388186	463120	293893	545599
rejected events	457548	415488	152193	420397	111445	424408
rejected %	92%	91%	39%	90%	37%	77%

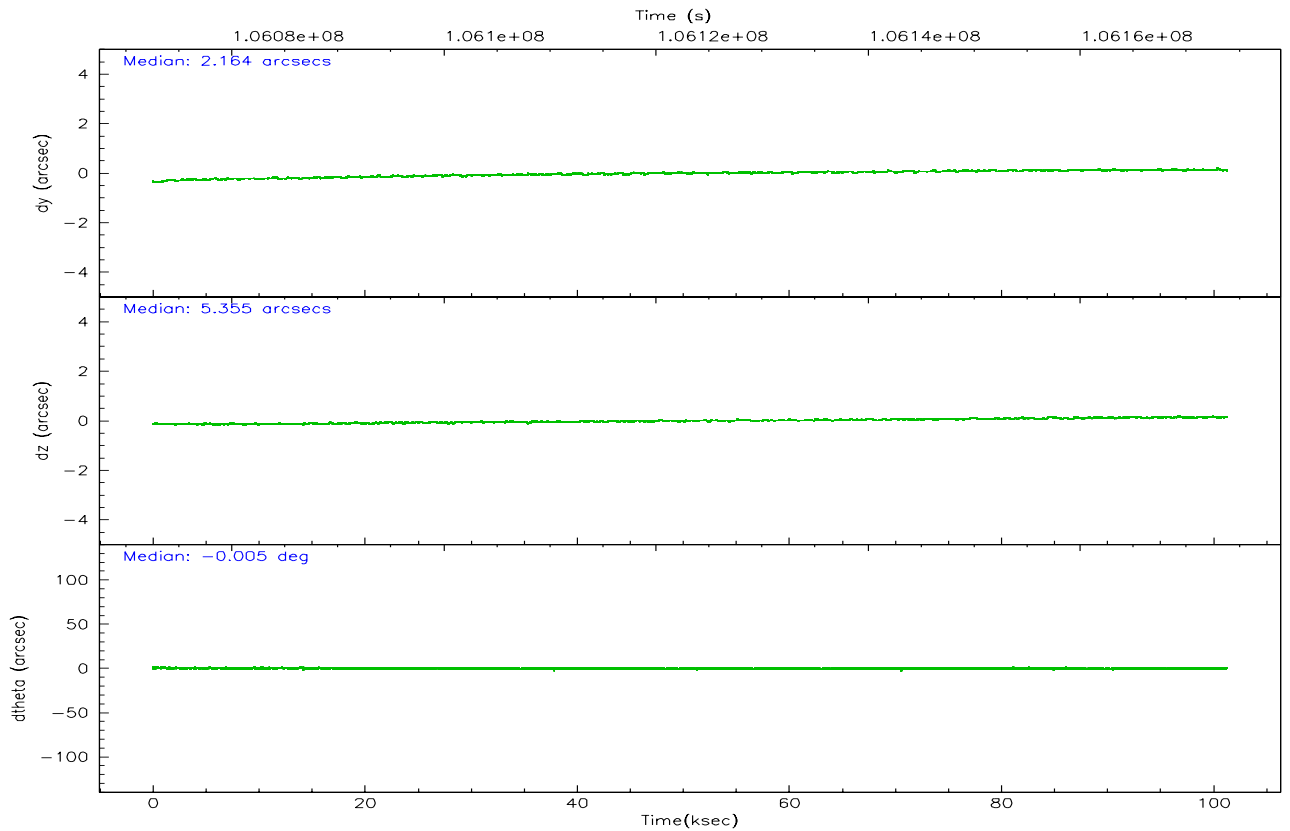
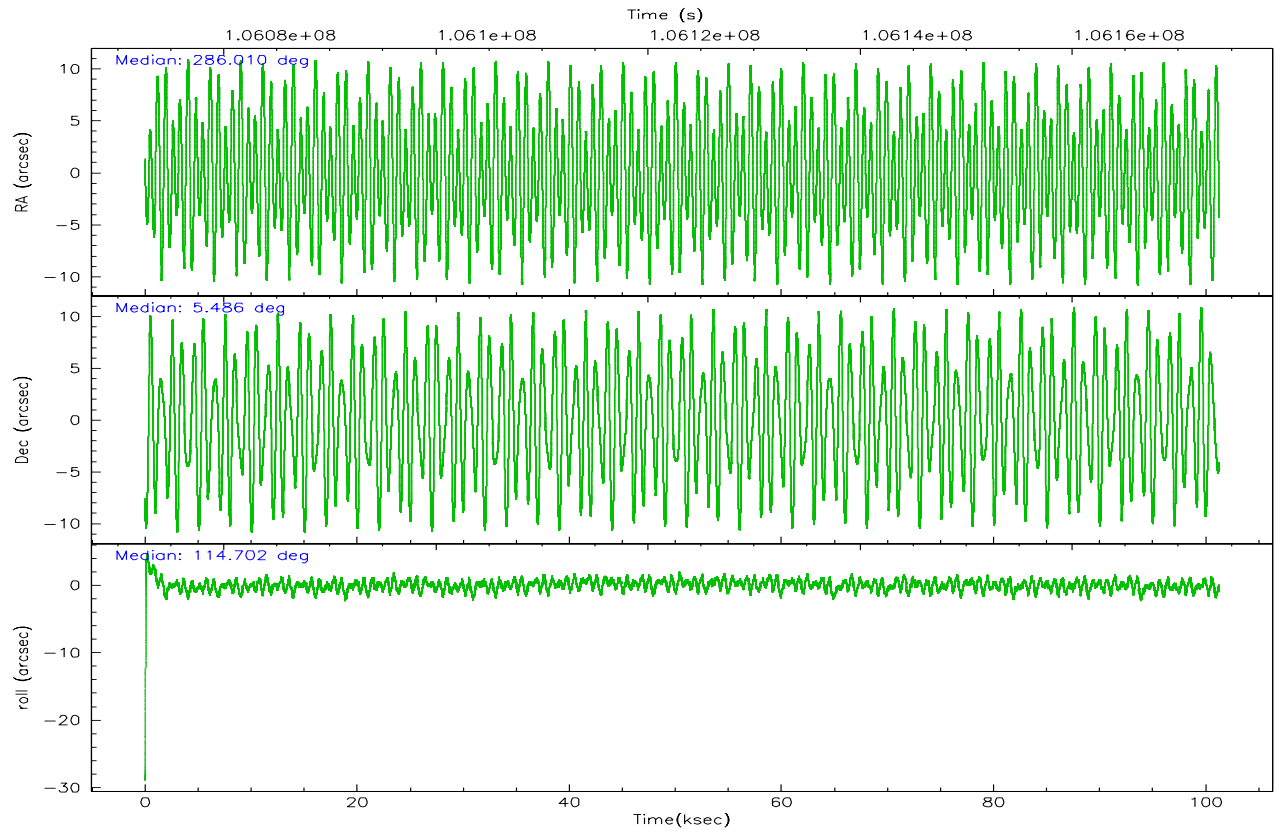
	ccd 2	ccd 3	ccd 5	ccd 6	ccd 7	ccd 8
grade 0 events	16294	15349	35042	17962	21162	35163
	3%	3%	9%	3%	7%	6%
grade 1 events	199	183	2467	203	310	372
	0%	0%	0%	0%	0%	0%
grade 2 events	8940	7266	79472	8516	51256	26503
	1%	1%	20%	1%	17%	4%
grade 3 events	4284	4518	7973	4933	15707	14251
	0%	0%	2%	1%	5%	2%
grade 4 events	4422	4175	7735	4827	15190	13200
	0%	0%	1%	1%	5%	2%
grade 5 events	6836	7714	21223	8310	21245	13715
	1%	1%	5%	1%	7%	2%
grade 6 events	5786	5690	105799	6487	79274	32077
	1%	1%	27%	1%	26%	5%
grade 7 events	450488	407591	128475	411882	89749	410318
	90%	90%	33%	88%	30%	75%

2.2 Compared Parameters

Parameter	Planned	Actual	Parameter	Planned	Actual
Instrument	ACIS	ACIS	Obspar format version number	6	6
Detector	ACIS-235678	ACIS-235678	Obspar file type	PREDICTED	ACTUAL
Grating	NONE	NONE	Obspar update status	NONE	UPDATED
Data mode	VFAINT	VFAINT	Number of optional ACIS chips dropped	0	0
Observation mode	POINTING	POINTING	On-chip summing requested	N	N
Pointing RA	286.032773	286.0102435815548	Subarray requested	NONE	NONE
Pointing Dec	5.470758	5.486300284933767	Alternating exposures requested	N	N
Pointing Roll	114.544425	114.7032044026911	Primary exposure time	0.000000	3.2
SIM focus pos (mm)	-0.684267	-0.6828225247311905			
SIM defocus (mm)	0	0.001444936568705701			
SIM translation stage pos (mm)	-190.132523	-190.1400660498719			
SIM translation stage offset (mm)	0	0.00754346686406393			
Observation start time	106073855.184000	106072353.1907			
Observation start date	2001-05-12T16:56:31	2001-05-12T16:32:33			
Observation end time	106173855.184000	106174582.59467			
Observation end date	2001-05-13T20:43:11	2001-05-13T20:56:22			
Read mode	TIMED	TIMED			

2.3 Aspect



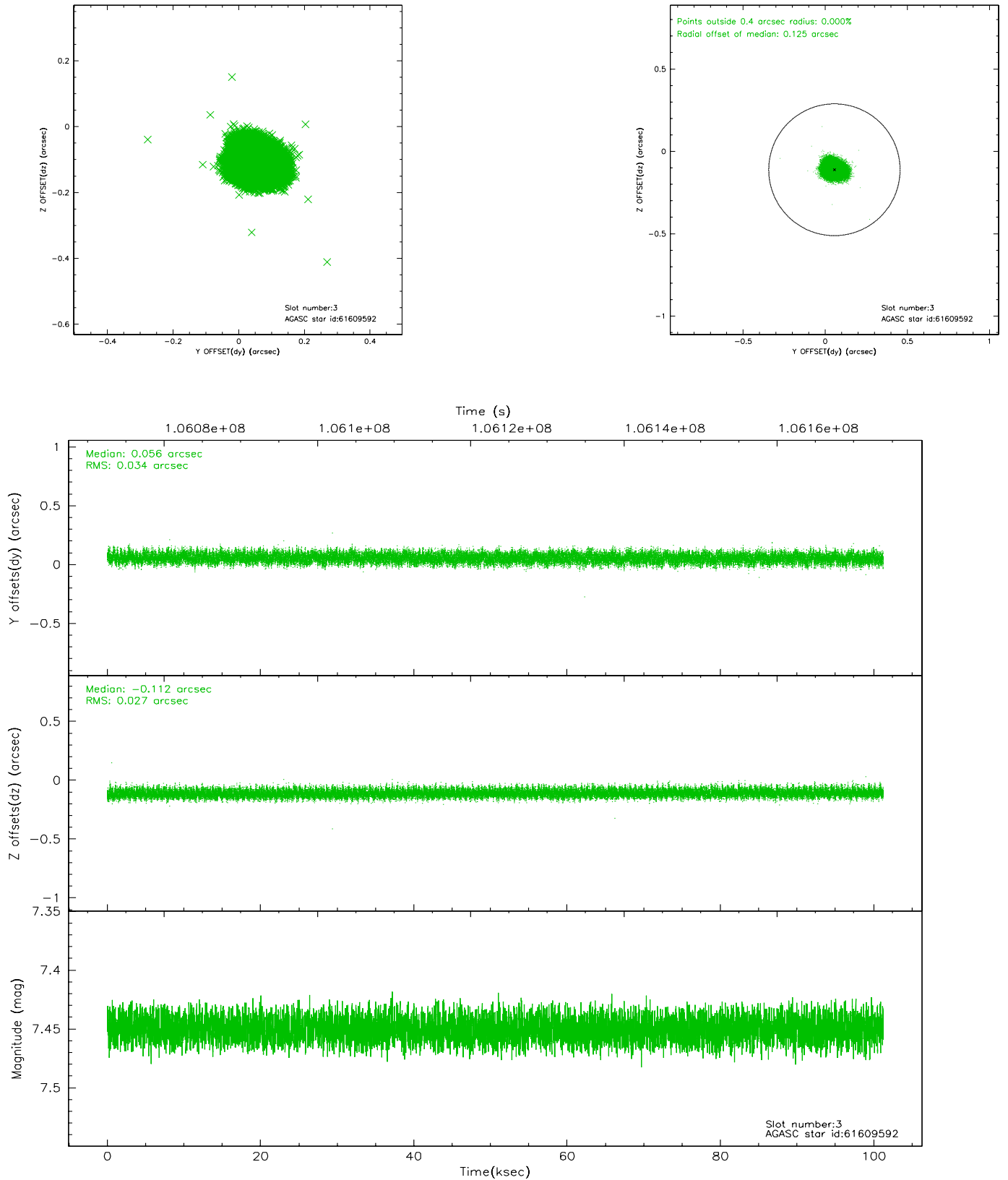


Slot Statistics

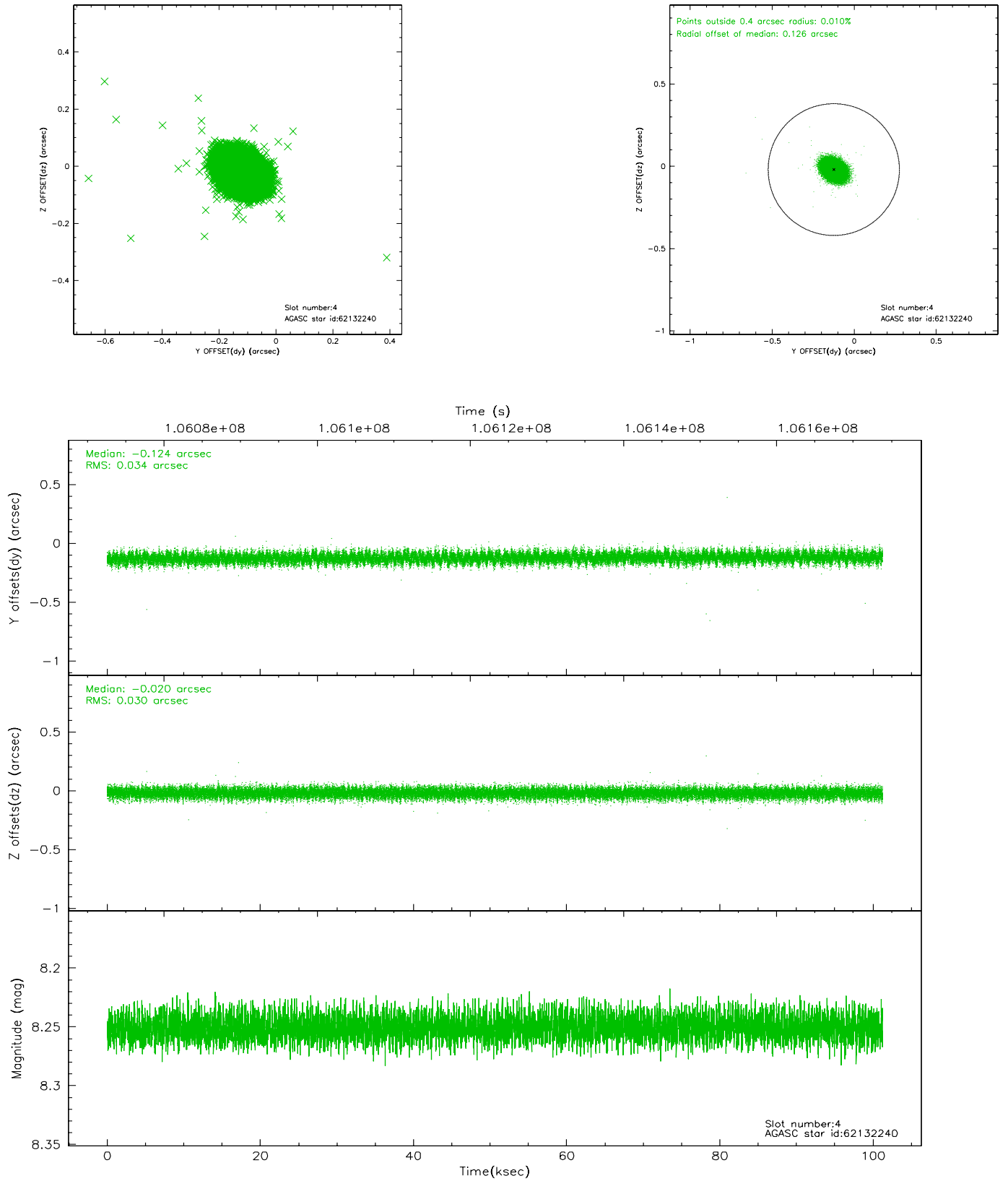
slot	status	id	mag	n_pts	med_dy	med_dz	dr1	dr2	ra	dec	mean_y	mean_z
0	FID	ACIS-S-2	7.11	24699	0.004	0.007	0.006	0.012	0.000000	0.000000	-754.72	-1726.49
1	FID	ACIS-S-4	7.20	24695	-0.048	0.004	0.006	0.011	0.000000	0.000000	2158.51	182.15
2	FID	ACIS-S-6	7.36	24697	0.016	-0.004	0.008	0.013	0.000000	0.000000	407.11	819.40
3	GUIDE	61609592	7.45	49389	0.056	-0.112	0.047	0.075	285.937372	5.069602	-1171.48	910.78
4	GUIDE	62132240	8.25	49389	-0.124	-0.020	0.047	0.078	285.977341	5.845283	1308.81	-379.66
5	GUIDE	62133008	8.12	49391	-0.132	0.073	0.059	0.097	285.856821	5.994383	1976.40	-210.16
6	GUIDE	61608600	8.32	49384	0.081	-0.101	0.067	0.107	286.035916	5.239962	-760.41	334.65
7	GUIDE	61610008	8.91	49388	0.122	0.161	0.065	0.105	286.481888	5.130471	-1782.61	-956.26

2.4 Star Slots

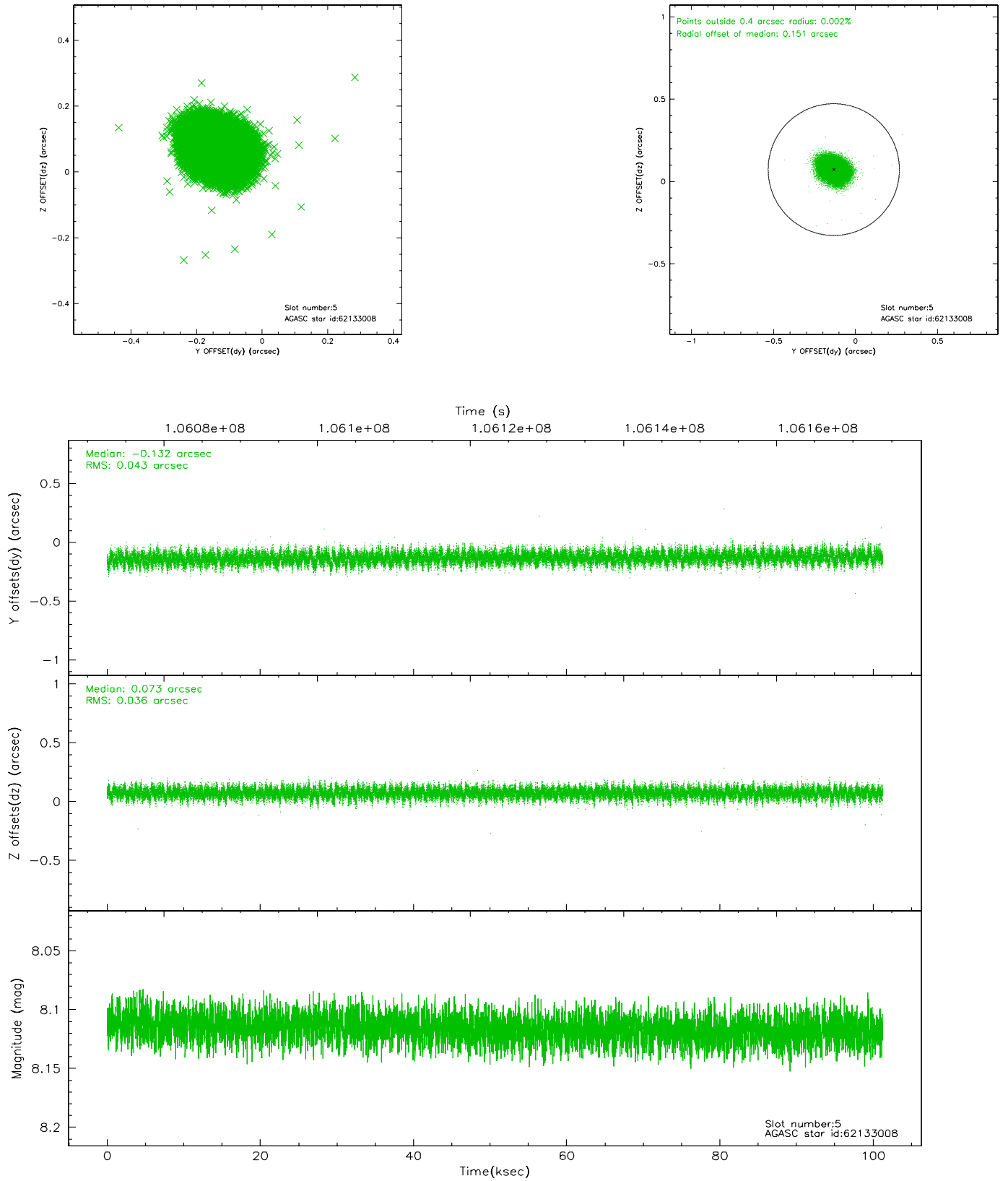
2.4.1 Slot 3



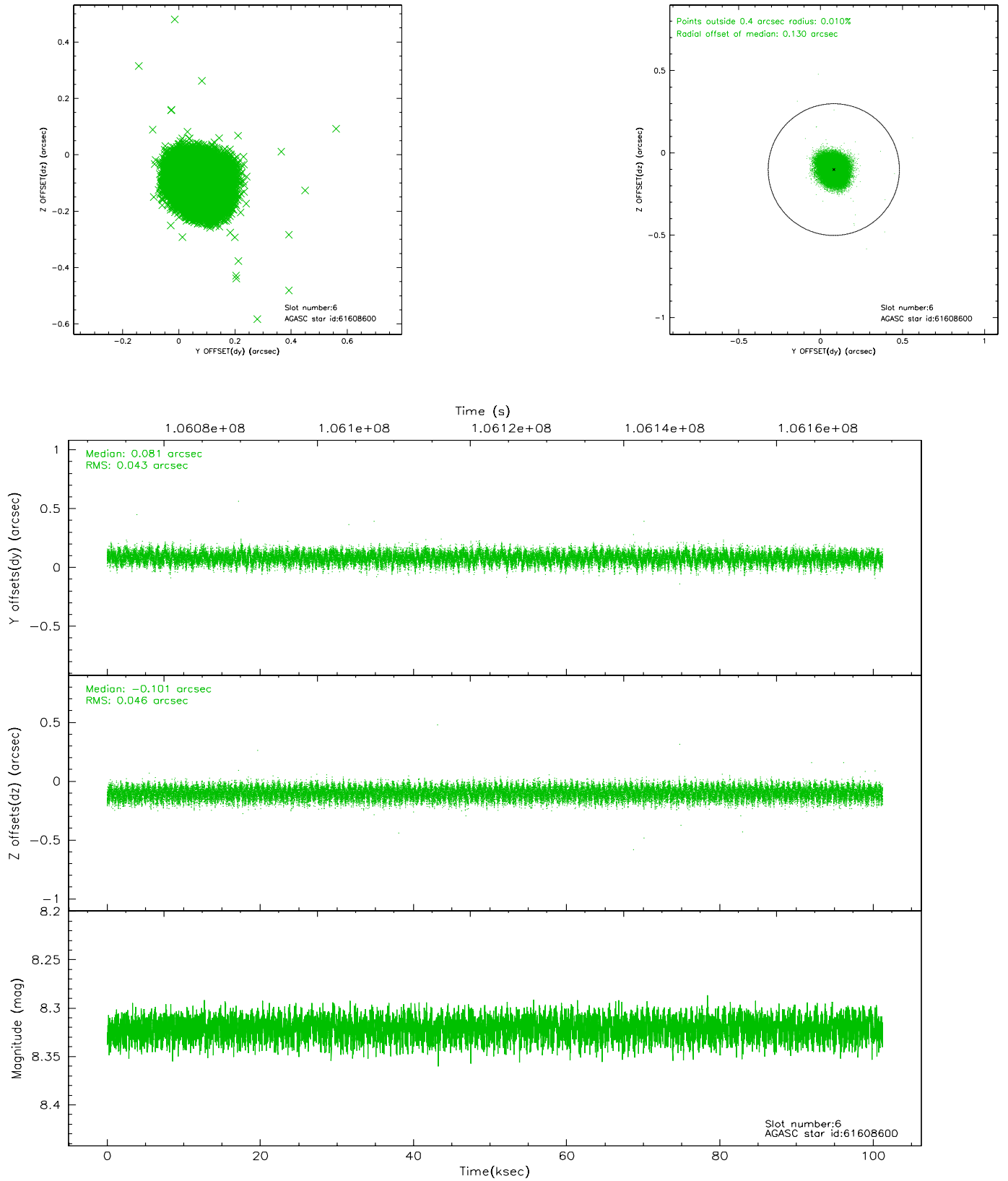
2.4.2 Slot 4



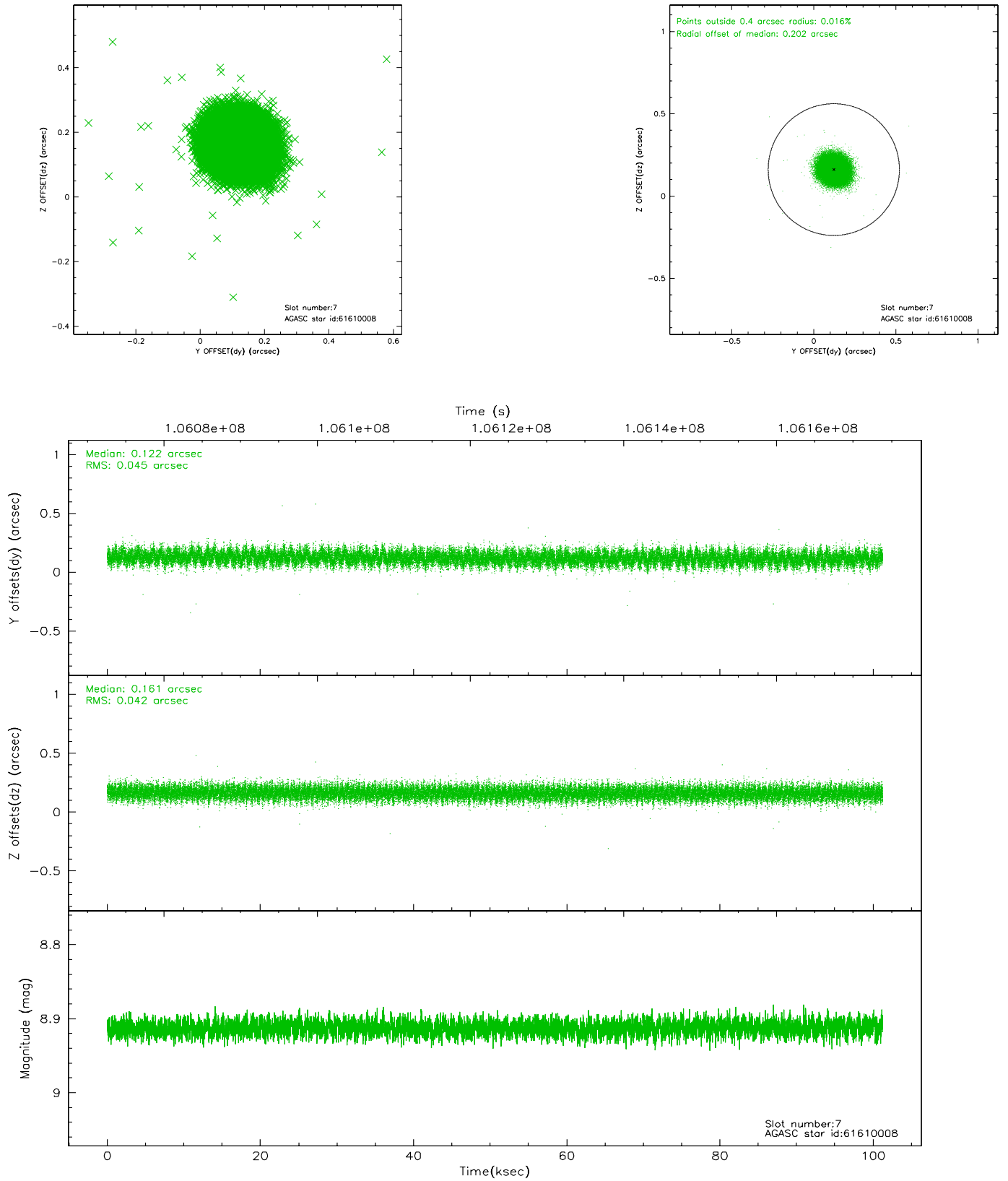
2.4.3 Slot 5



2.4.4 Slot 6

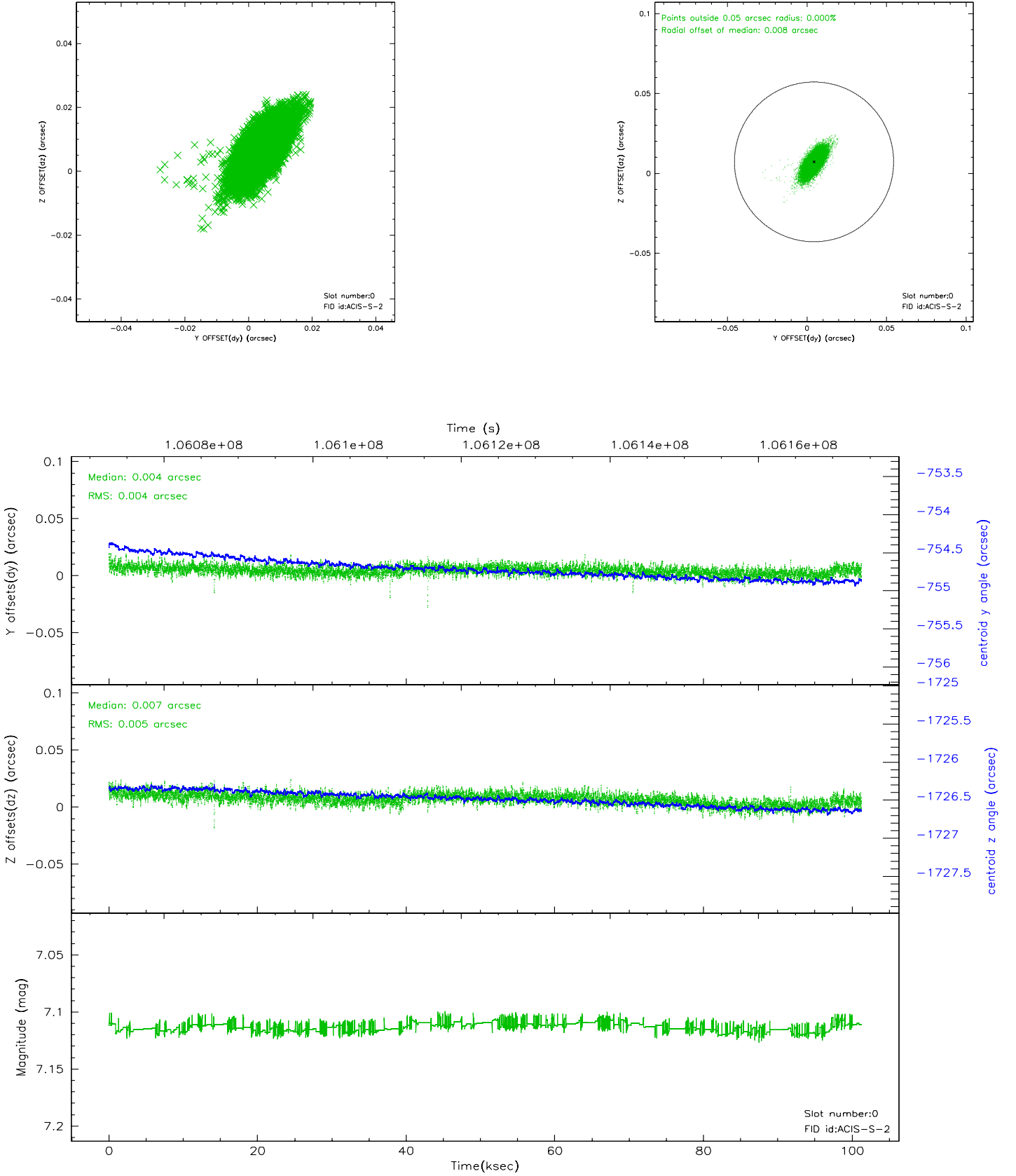


2.4.5 Slot 7

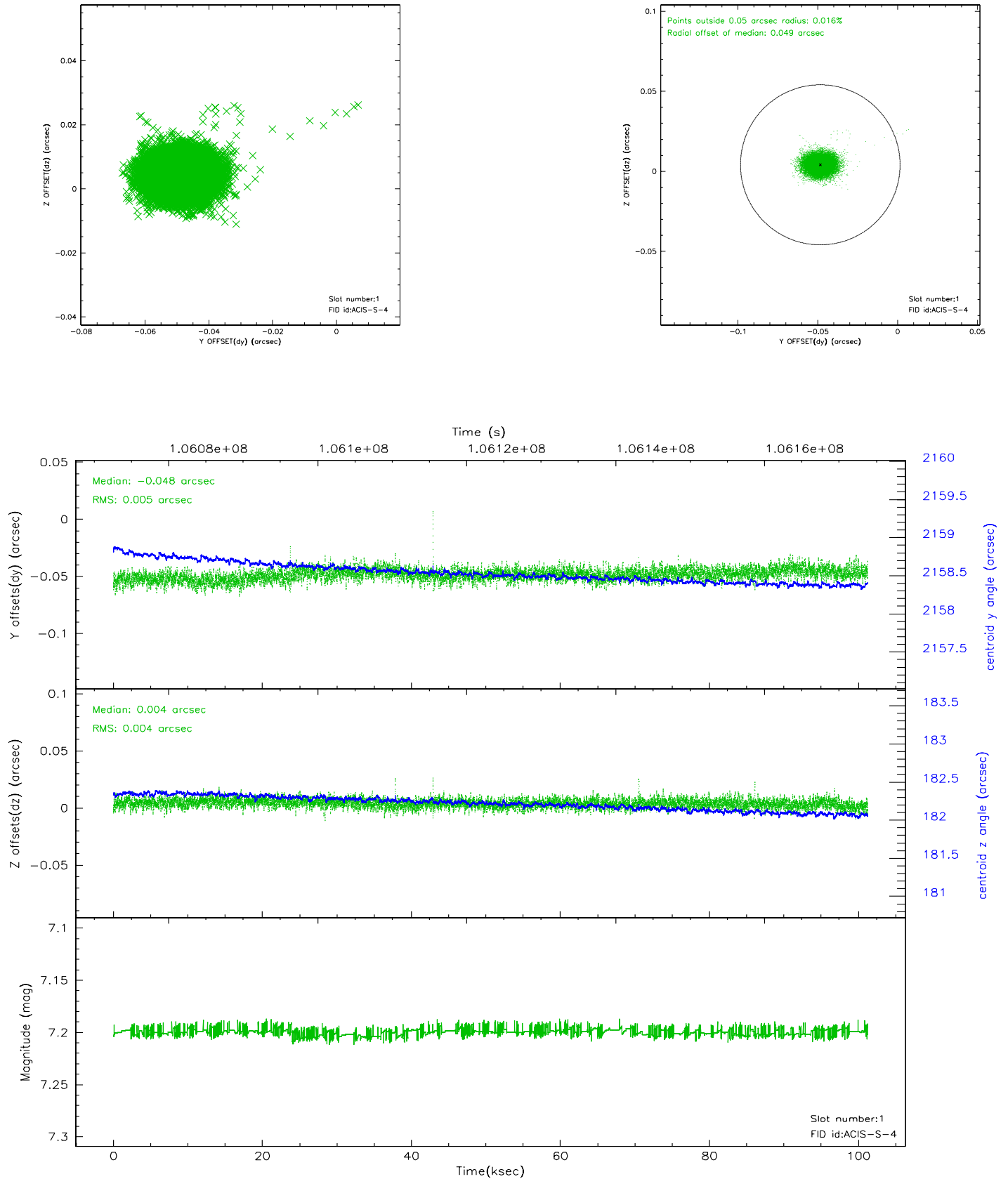


2.5 FID Slots

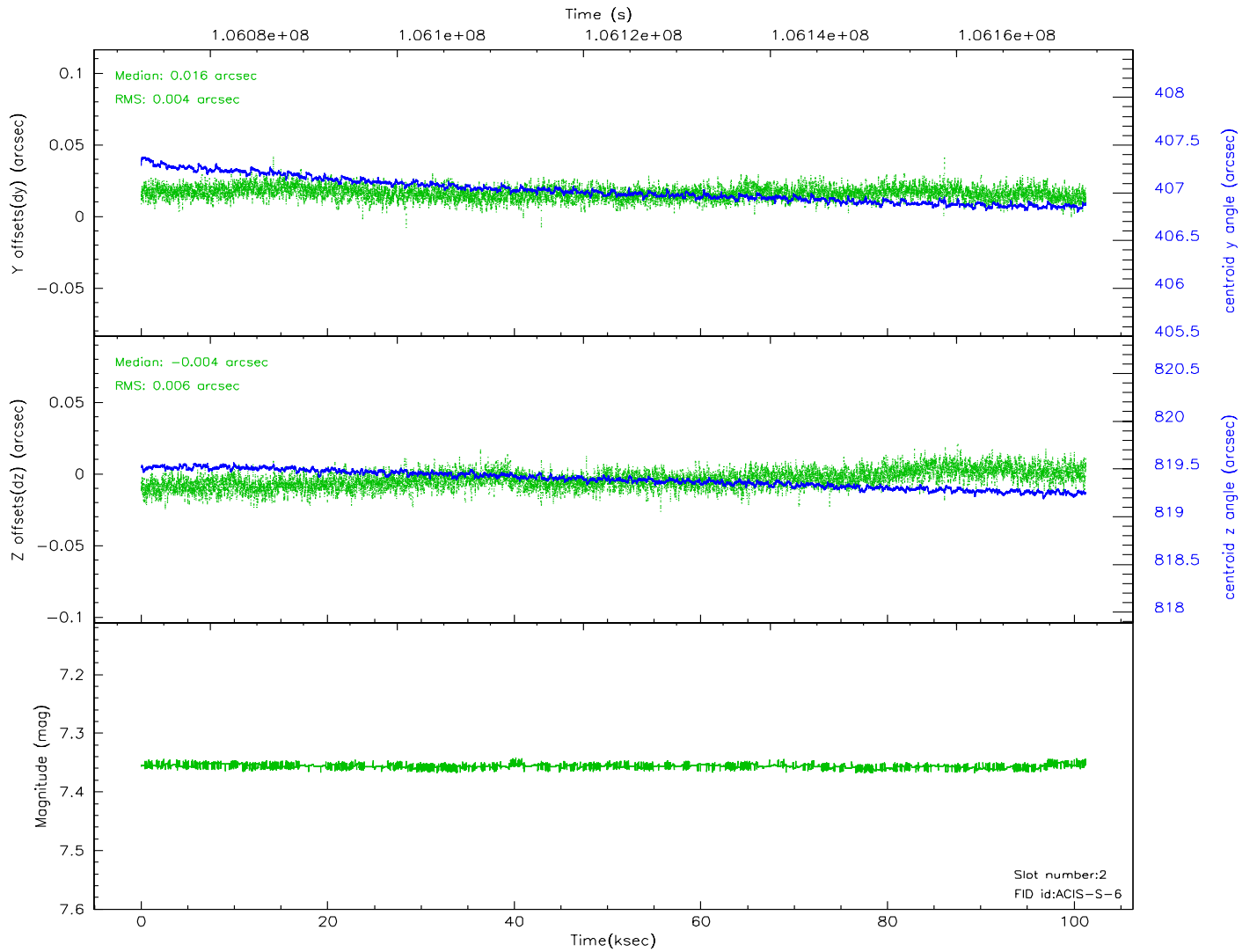
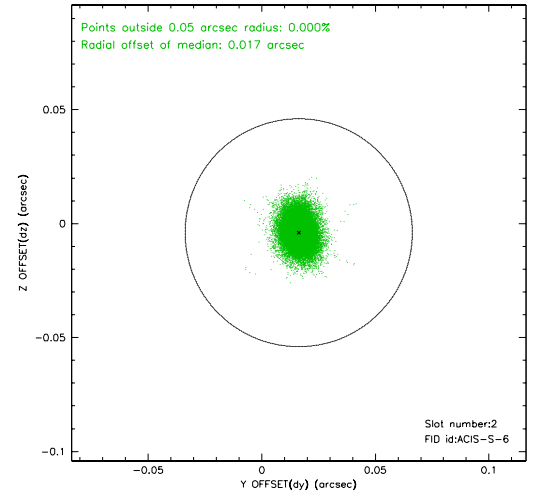
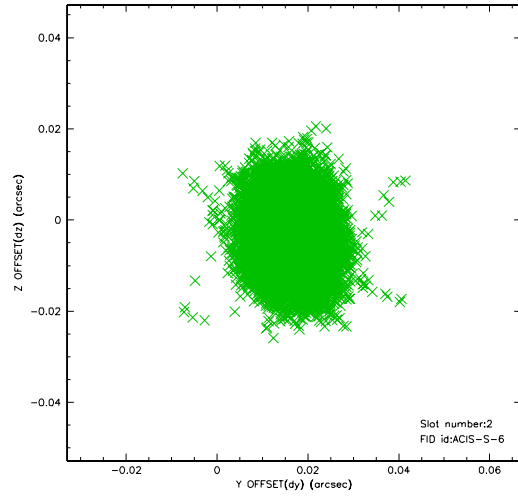
2.5.1 Slot 0



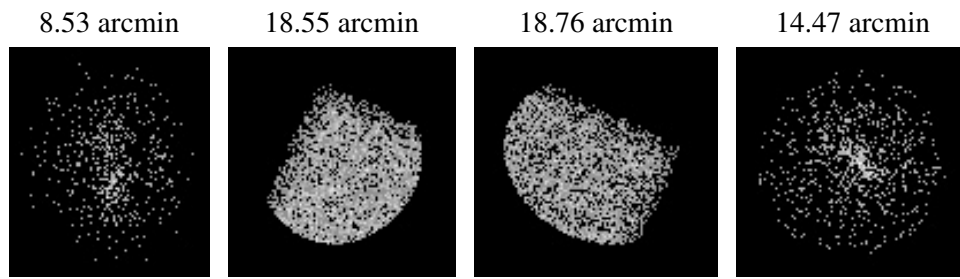
2.5.2 Slot 1



2.5.3 Slot 2



3 Point Sources



A Summary

A.1 Status

V&V Scientist	Jen Lauer
V&V Date (YYYY-MM-DD)	2006.11.22
V&V Edition	1
V&V Disposition and Status	OK
V&V Charge Time	99.8

A.2 Comments