

# V&V Reference Report

## L2 ASCDS Version : 7.6.9

Observation 1986 - L2 Version 001  
Chandra X-Ray Center

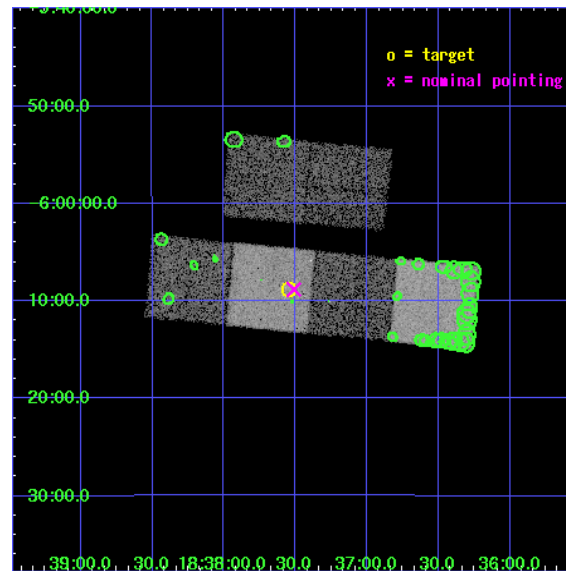
L2 Processing Date : Dec 11 2006

## Contents

<b>1</b>	<b>Front</b>	<b>2</b>
<b>2</b>	<b>OBI</b>	<b>3</b>
2.1	OBI . . . . .	3
2.1.1	Images . . . . .	3
2.1.2	Bias . . . . .	3
2.1.3	Parameters . . . . .	4
2.1.4	Events . . . . .	4
2.2	Compared Parameters . . . . .	5
2.3	Aspect . . . . .	6
2.4	Star Slots . . . . .	9
2.4.1	Slot 3 . . . . .	9
2.4.2	Slot 4 . . . . .	10
2.4.3	Slot 5 . . . . .	11
2.4.4	Slot 6 . . . . .	12
2.4.5	Slot 7 . . . . .	13
2.5	FID Slots . . . . .	14
2.5.1	Slot 0 . . . . .	14
2.5.2	Slot 1 . . . . .	15
2.5.3	Slot 2 . . . . .	16
<b>3</b>	<b>Point Sources</b>	<b>17</b>
<b>A</b>	<b>Summary</b>	<b>18</b>
A.1	Status . . . . .	18
A.2	Comments . . . . .	18

# 1 Front

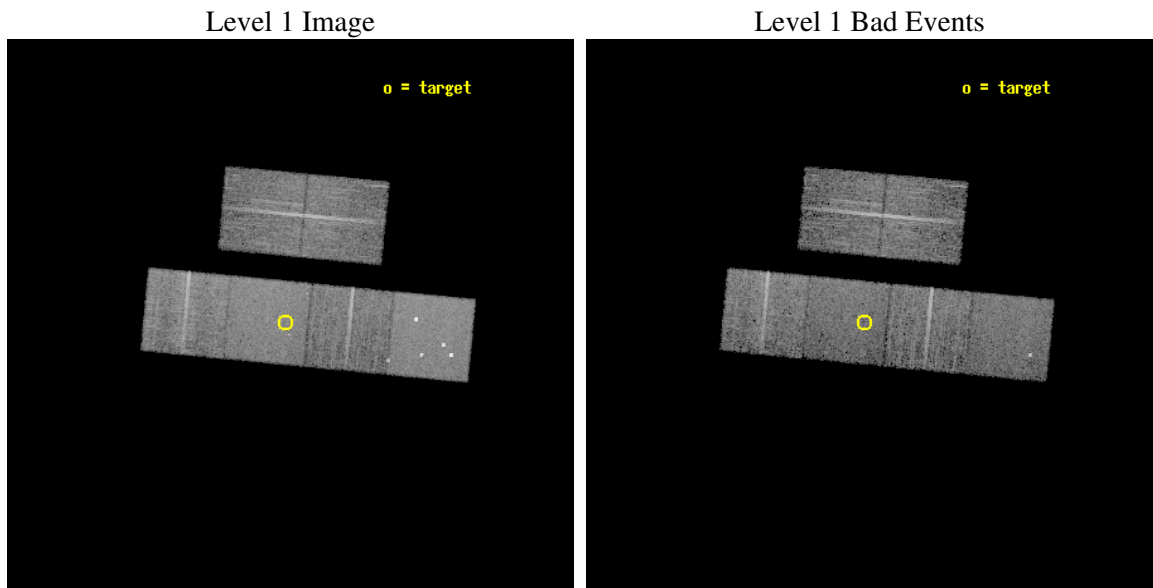
seq_num	500163
obs_id	1986
title	ACIS IMAGING OF SNR/GAMMA-RAY/YOUNG PULSAR ASSOCIATIONS
observer	Prof. Roger Romani
object	GEV J1837-0610
dtcycle	0
cycle	P
ra_targ	279.3875
dec_targ	-6.147778
ra_nom	279.37773368773
dec_nom	-6.1469977397285
roll_nom	185.46546588801
revision	2
ontime	9123.2000084966
livetime	9007.6765566575
ontime2	9123.2000084966
ontime3	9123.2000084966
ontime5	9123.2000084966
ontime6	9123.2000084966
ontime7	9123.2000084966
ontime8	9123.2000084966
l2events	89842



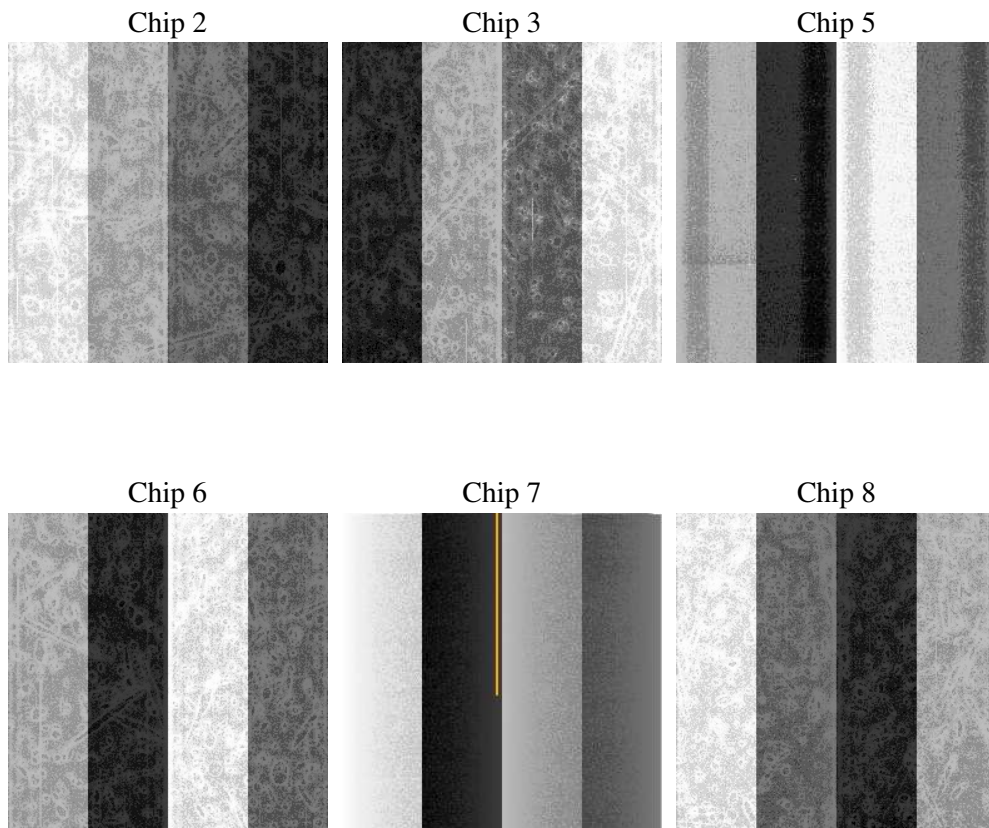
## 2 OBI

### 2.1 OBI

#### 2.1.1 Images



#### 2.1.2 Bias



### 2.1.3 Parameters

obi_num	0
ascdsver	7.6.9
caldbver	3.2.4
date	2006-12-11T11:56:03
revision	2

sched_exp_time	9000.000000
ontime	10040.62879239
ontime2	9959.6027923822
ontime3	9959.6027923822
ontime5	10040.62879239
ontime6	9956.361752376
ontime7	10040.62879239
ontime8	9966.0848723799
l1events	468688

### 2.1.4 Events

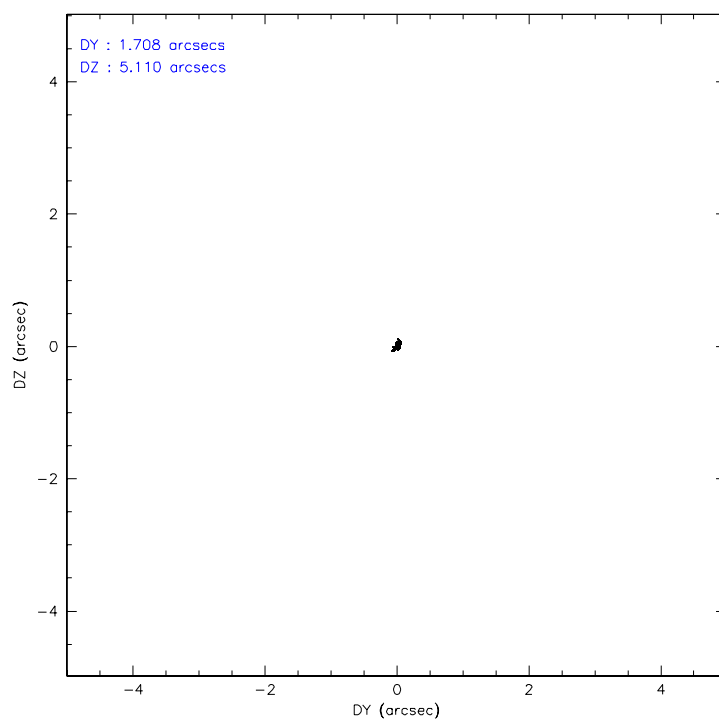
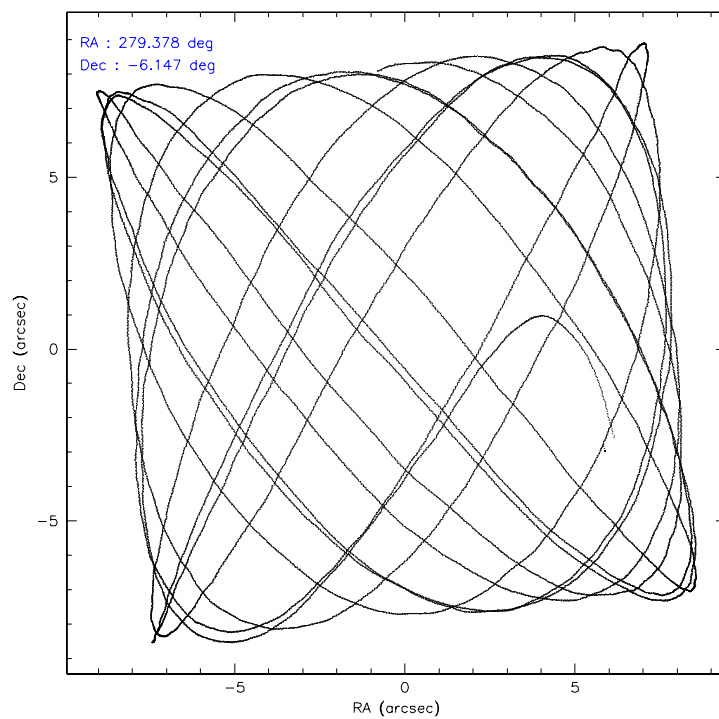
	ccd 2	ccd 3	ccd 5	ccd 6	ccd 7	ccd 8
level 1 events	67383	65415	99654	66689	85334	84213
rejected events	60793	58546	56705	59426	55094	67714
rejected %	90%	89%	56%	89%	64%	80%

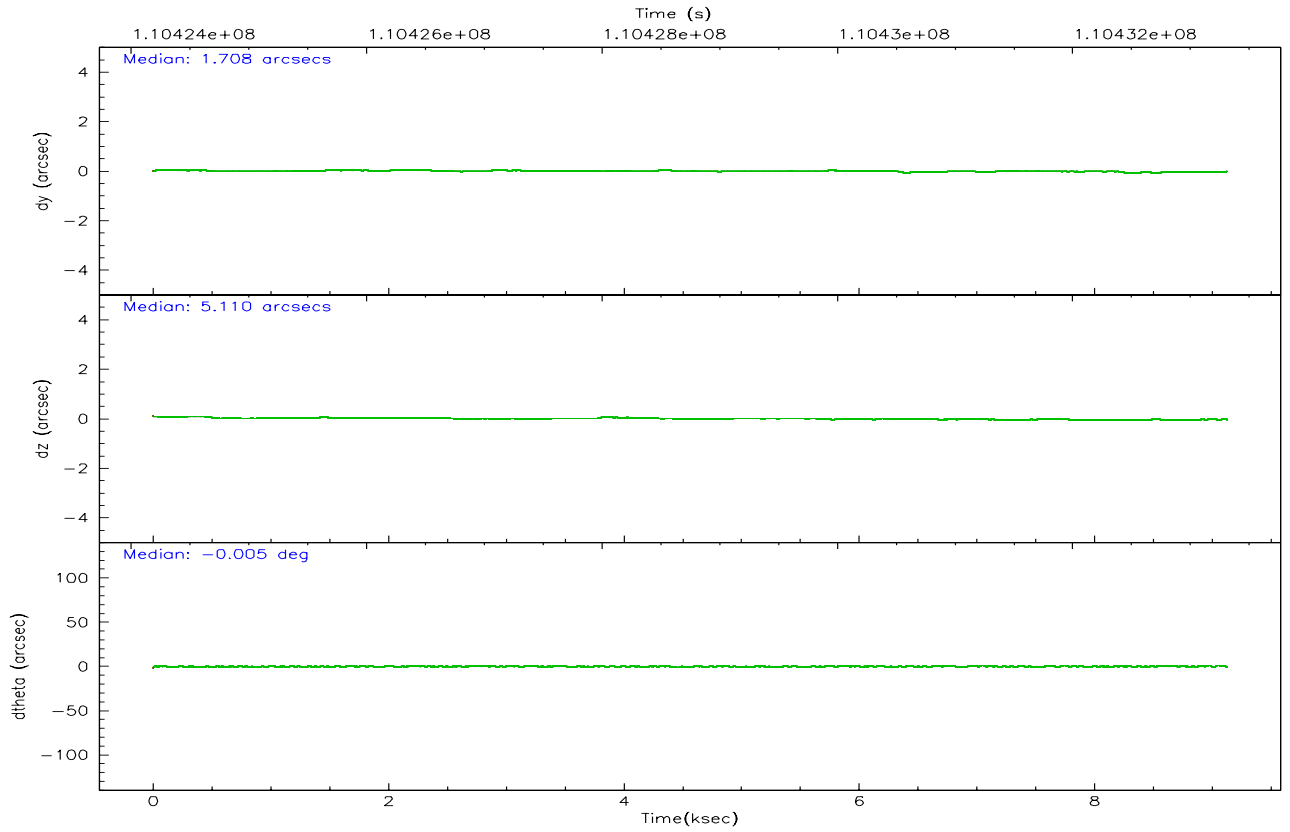
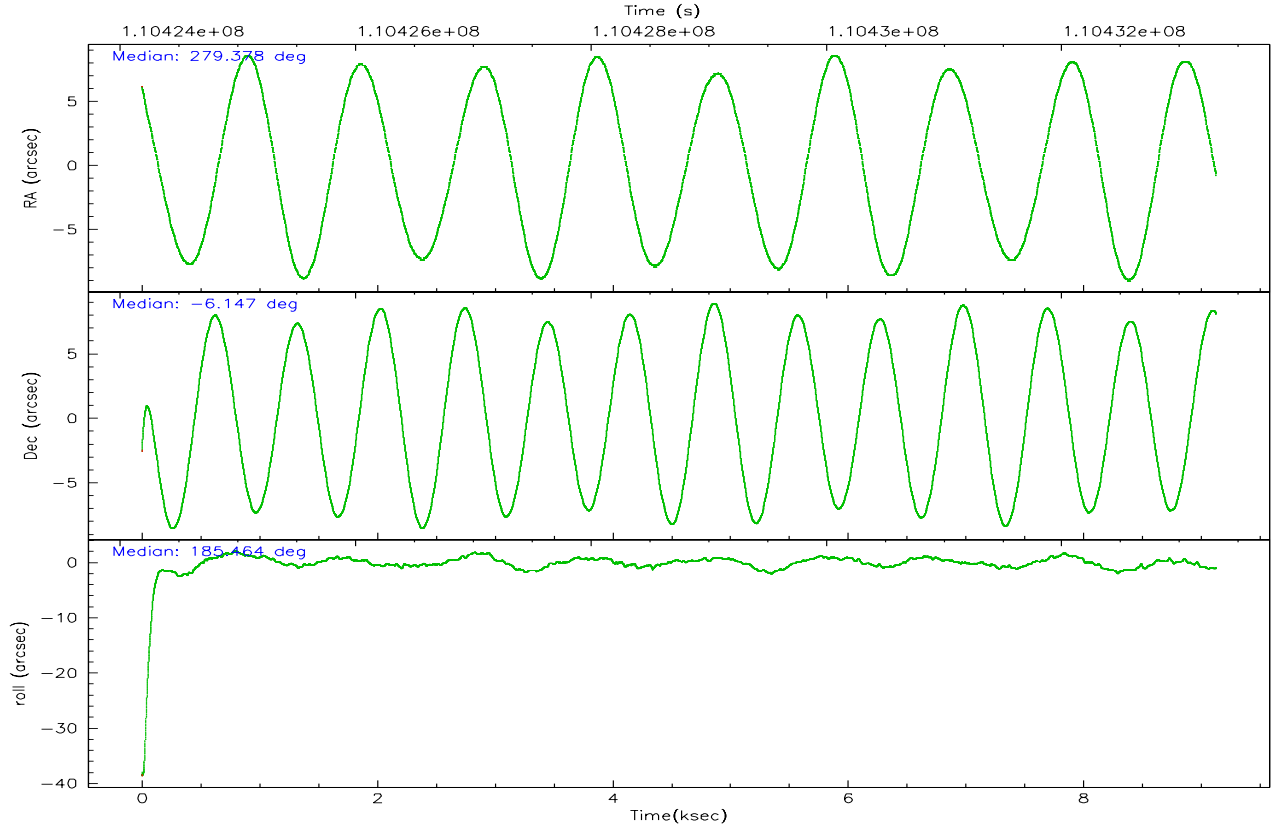
	ccd 2	ccd 3	ccd 5	ccd 6	ccd 7	ccd 8
grade 0 events	2929	3197	8850	3262	1944	5822
	4%	4%	8%	4%	2%	6%
grade 1 events	40	28	751	30	48	58
	0%	0%	0%	0%	0%	0%
grade 2 events	1559	1479	13069	1605	8182	3784
	2%	2%	13%	2%	9%	4%
grade 3 events	674	696	996	792	1782	1941
	1%	1%	0%	1%	2%	2%
grade 4 events	722	681	1008	774	1787	1860
	1%	1%	1%	1%	2%	2%
grade 5 events	2310	2576	4647	2815	5734	3613
	3%	3%	4%	4%	6%	4%
grade 6 events	1267	1373	23324	1467	19539	4357
	1%	2%	23%	2%	22%	5%
grade 7 events	57882	55385	47009	55944	46318	62778
	85%	84%	47%	83%	54%	74%

## 2.2 Compared Parameters

Parameter	Planned	Actual	Parameter	Planned	Actual
Instrument	ACIS	ACIS	Obspar format version number	6	6
Detector	ACIS-235678	ACIS-235678	Obspar file type	PREDICTED	ACTUAL
Grating	NONE	NONE	Obspar update status	NONE	UPDATED
Data mode	FAINT	FAINT	Number of optional ACIS chips dropped	0	0
Observation mode	POINTING	POINTING	On-chip summing requested	N	N
Pointing RA	279.399901	279.3777336877283	Subarray requested	NONE	NONE
Pointing Dec	-6.130905	-6.146997739728494	Alternating exposures requested	N	N
Pointing Roll	185.311256	185.4654658880073	Primary exposure time	0.000000	3.2
SIM focus pos (mm)	-0.684267	-0.6828225247311905			
SIM defocus (mm)	0	0.001444936568705701			
SIM translation stage pos (mm)	-190.132523	-190.1400660498719			
SIM translation stage offset (mm)	0	0.00754346686406393			
Observation start time	110424311.184000	110422805.96018			
Observation start date	2001-07-02T01:24:07	2001-07-02T01:00:05			
Observation end time	110433311.184000	110433770.38561			
Observation end date	2001-07-02T03:54:07	2001-07-02T04:02:50			
Read mode	TIMED	TIMED			

## 2.3 Aspect





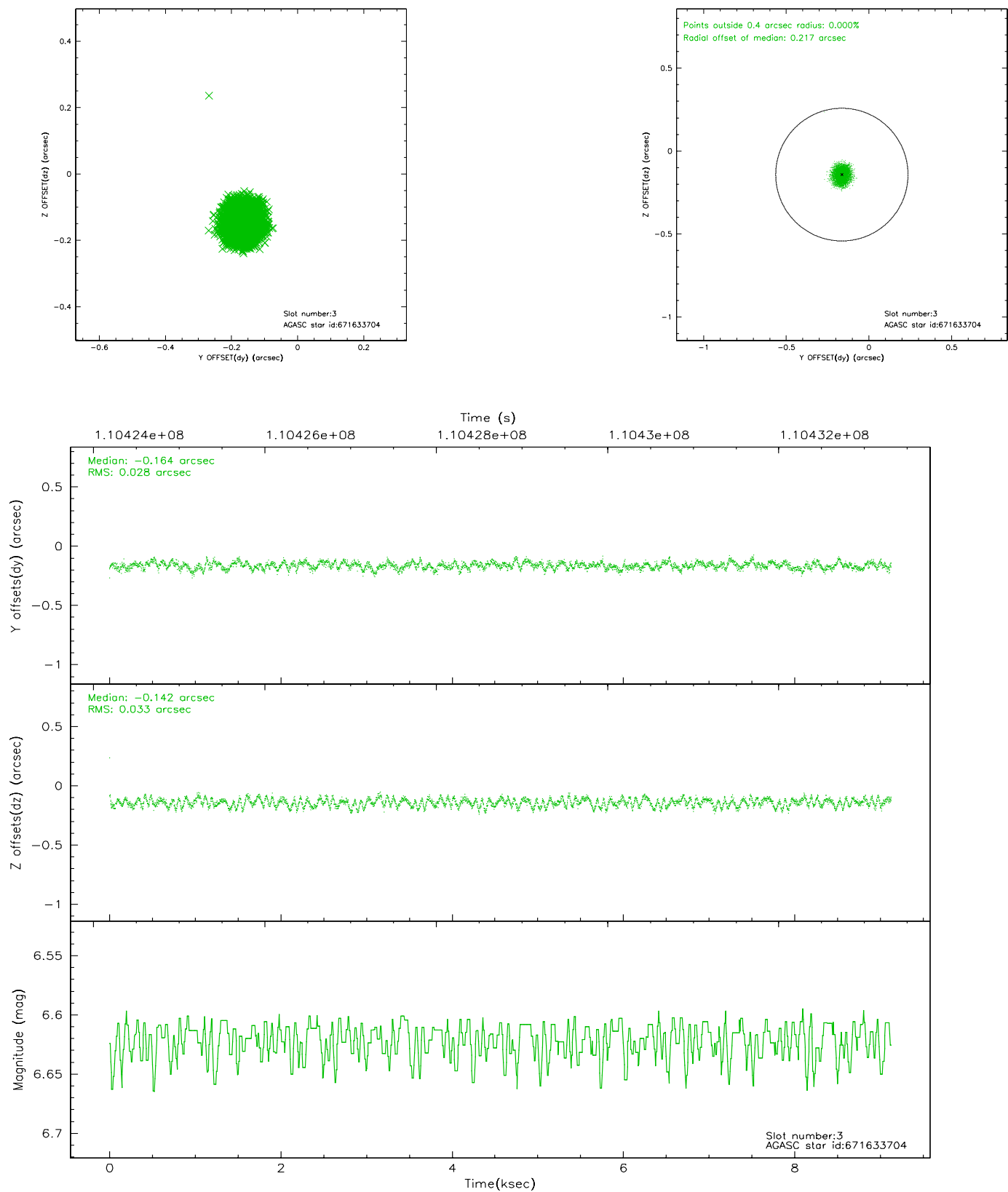
### Slot Statistics

slot	status	id	mag	n_pts	med_dy	med_dz	dr1	dr2	ra	dec	mean_y	mean_z
0	FID	ACIS-S-2	7.11	2226	-0.025	0.024	0.006	0.011	0.000000	0.000000	-754.30	-1726.22
1	FID	ACIS-S-4	7.20	2226	-0.077	0.006	0.004	0.008	0.000000	0.000000	2158.61	181.69
2	FID	ACIS-S-5	7.24	2227	0.071	-0.021	0.006	0.010	0.000000	0.000000	-1806.32	175.93
3	GUIDE	671633704	6.62	4453	-0.164	-0.142	0.047	0.071	279.032674	-6.742060	1510.66	2069.25
4	GUIDE	671634008	7.17	4453	-0.084	-0.057	0.041	0.065	279.178009	-6.421976	887.48	970.18
5	GUIDE	671762280	8.86	4452	0.094	0.038	0.064	0.104	280.028746	-5.773981	-2361.42	-1069.74
6	GUIDE	671759144	8.66	4452	0.047	0.146	0.054	0.088	279.658906	-5.990264	-970.78	-418.55
7	GUIDE	671767040	9.88	4450	0.107	0.016	0.096	0.160	279.553794	-6.200305	-525.51	299.38

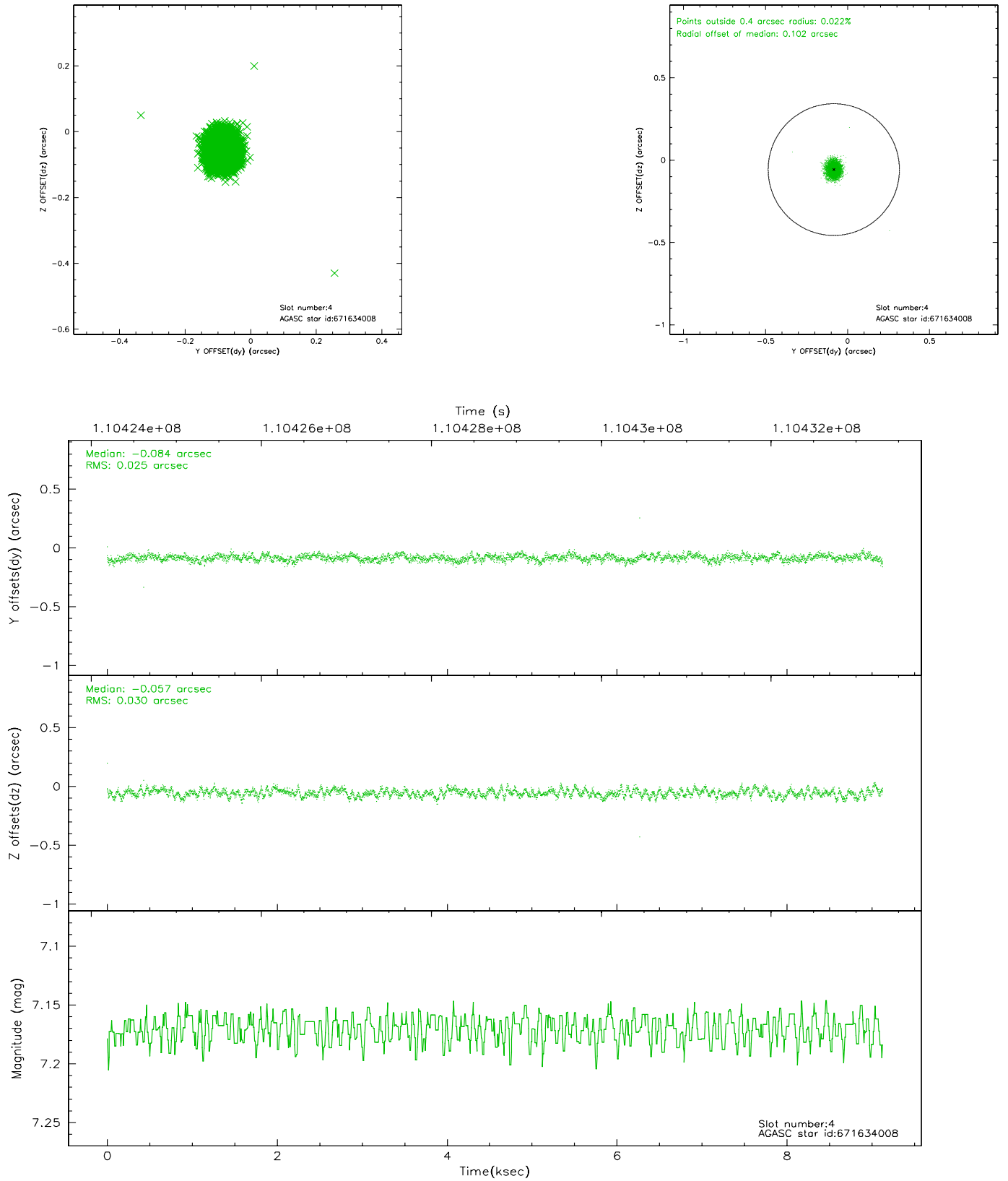


## 2.4 Star Slots

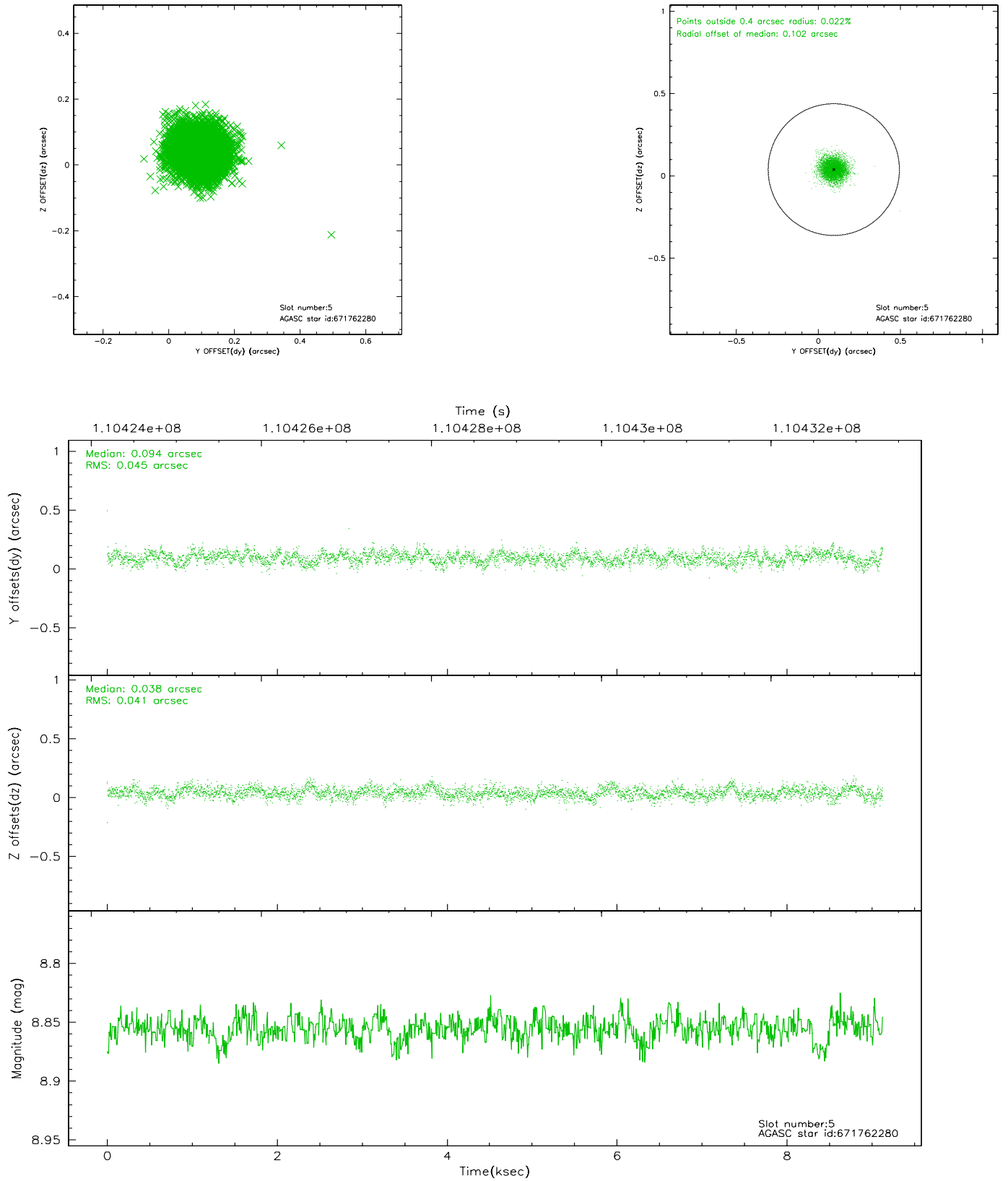
### 2.4.1 Slot 3



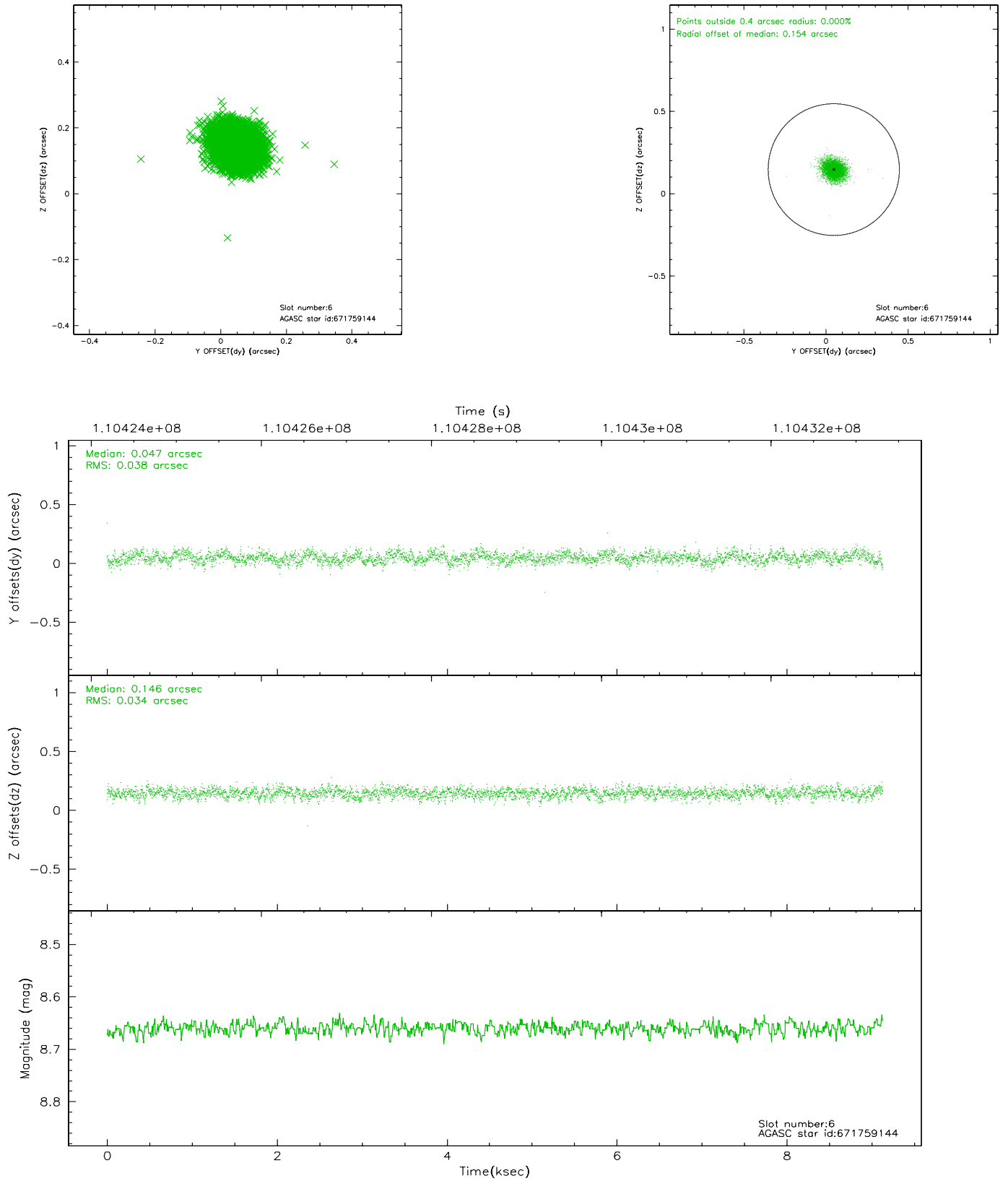
## 2.4.2 Slot 4



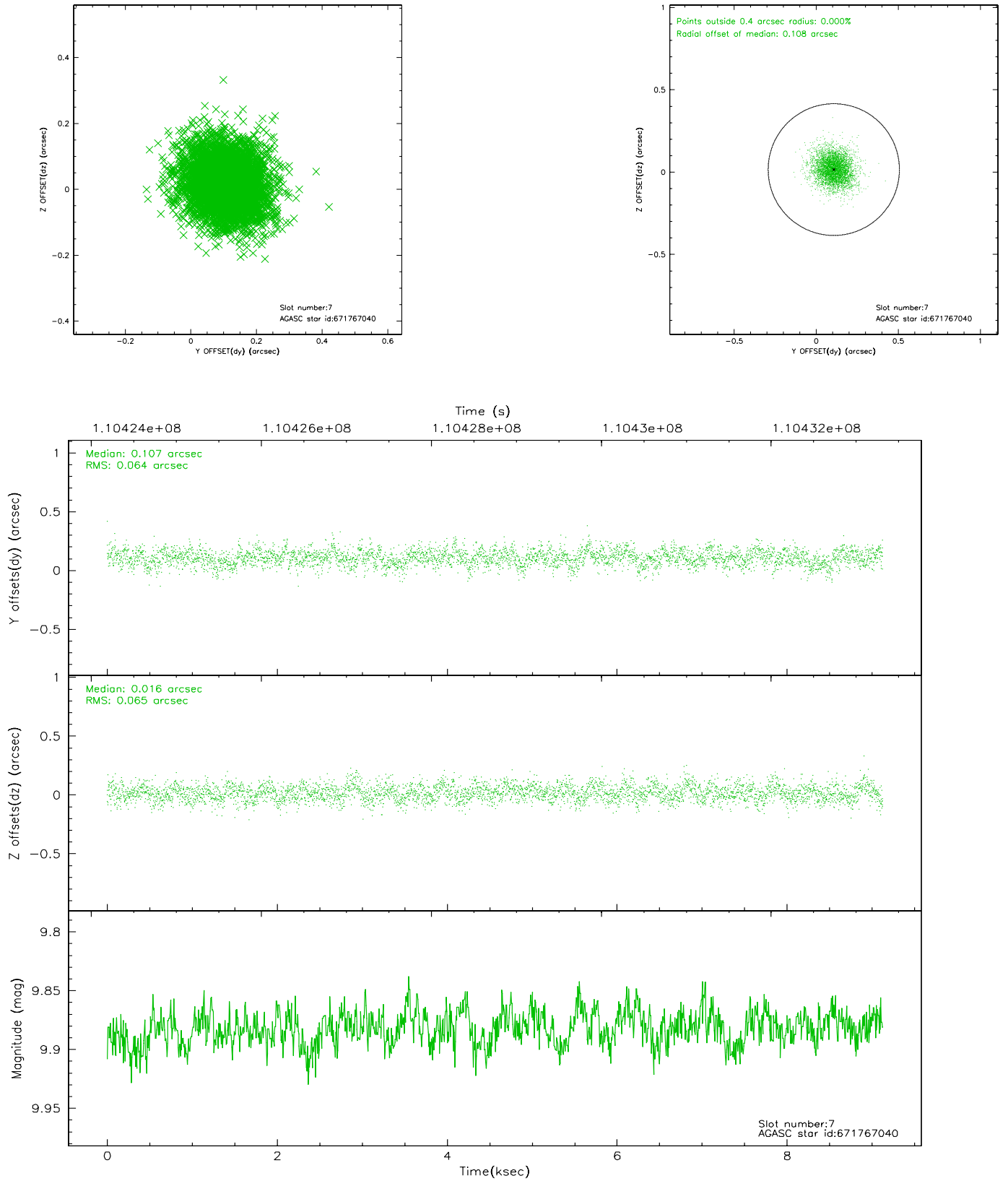
### 2.4.3 Slot 5



## 2.4.4 Slot 6

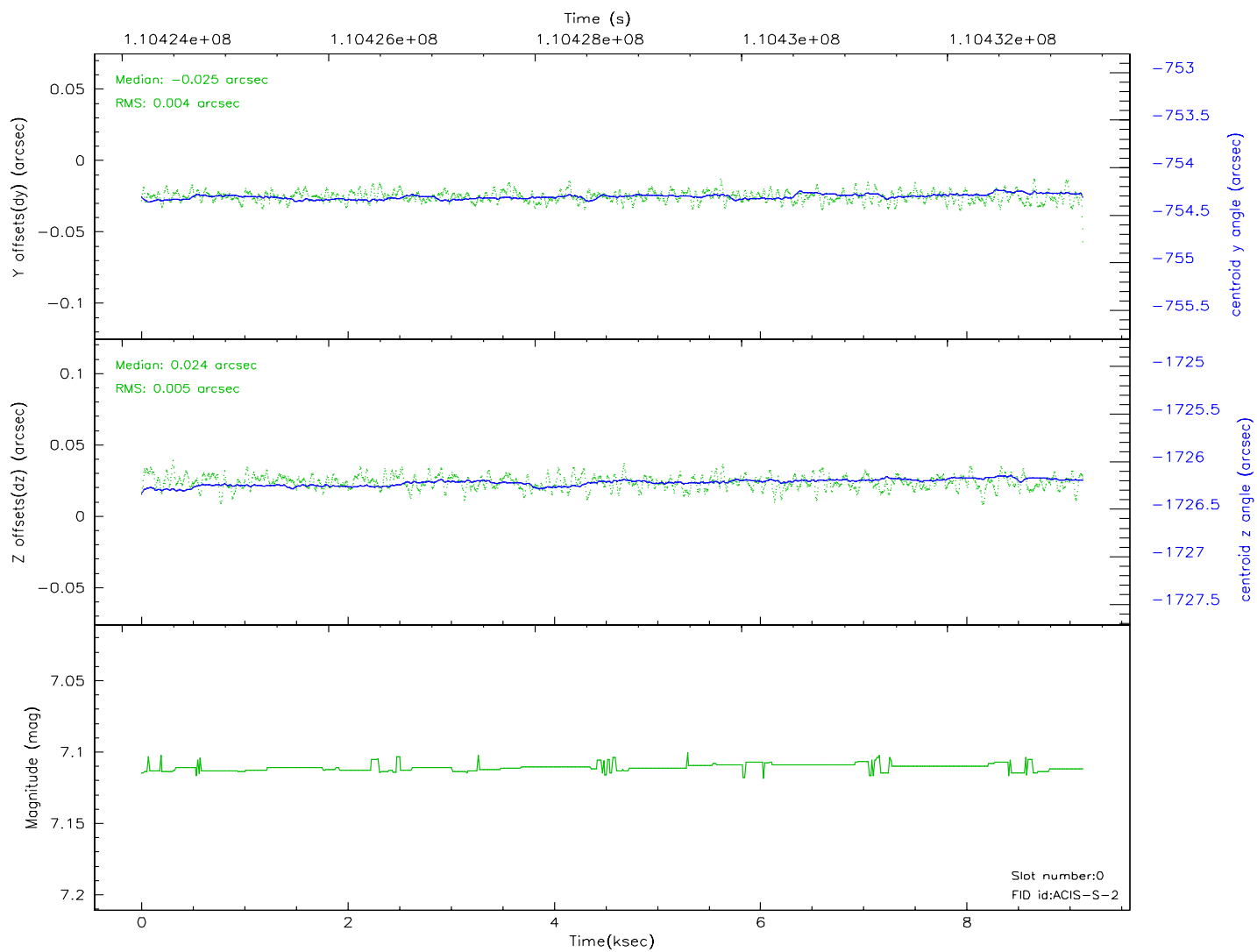
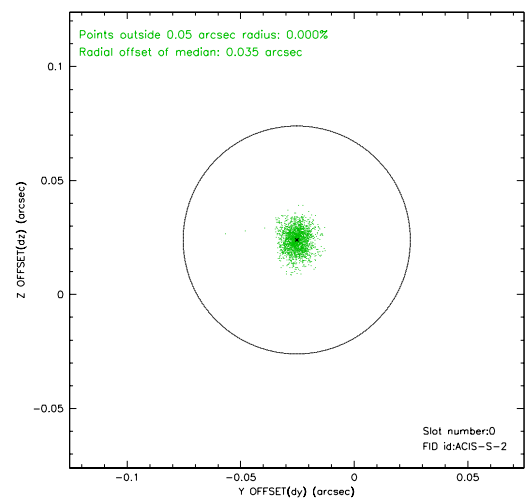
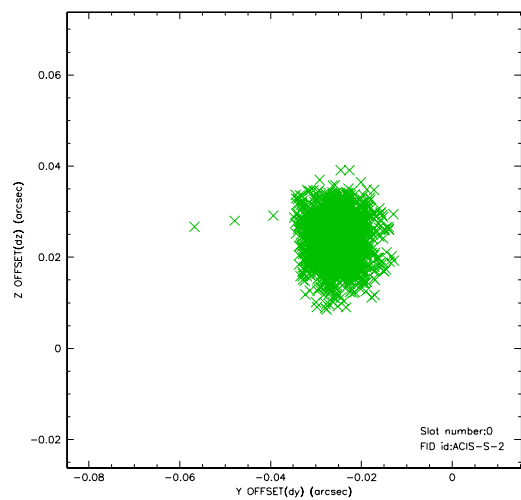


## 2.4.5 Slot 7

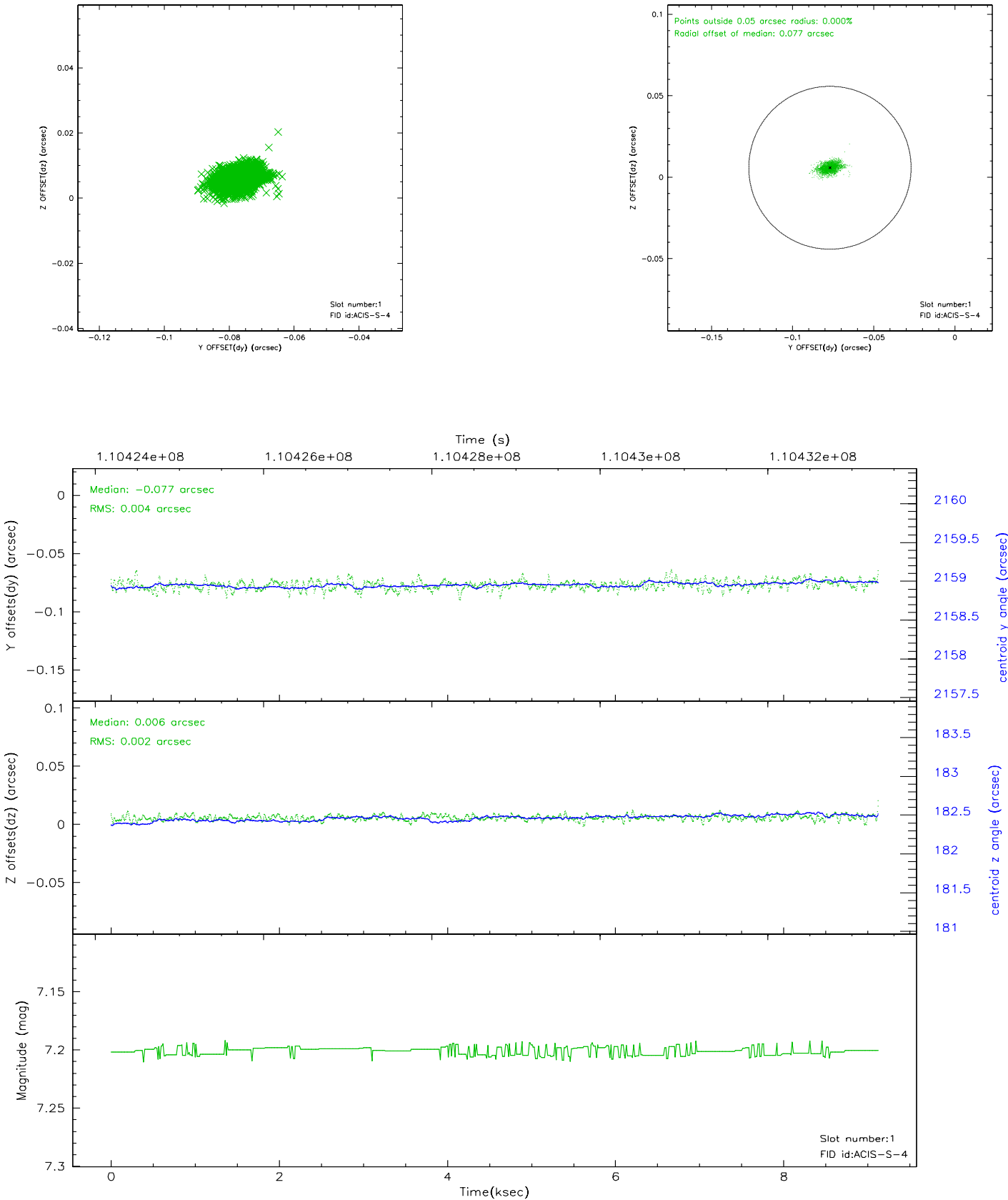


## 2.5 FID Slots

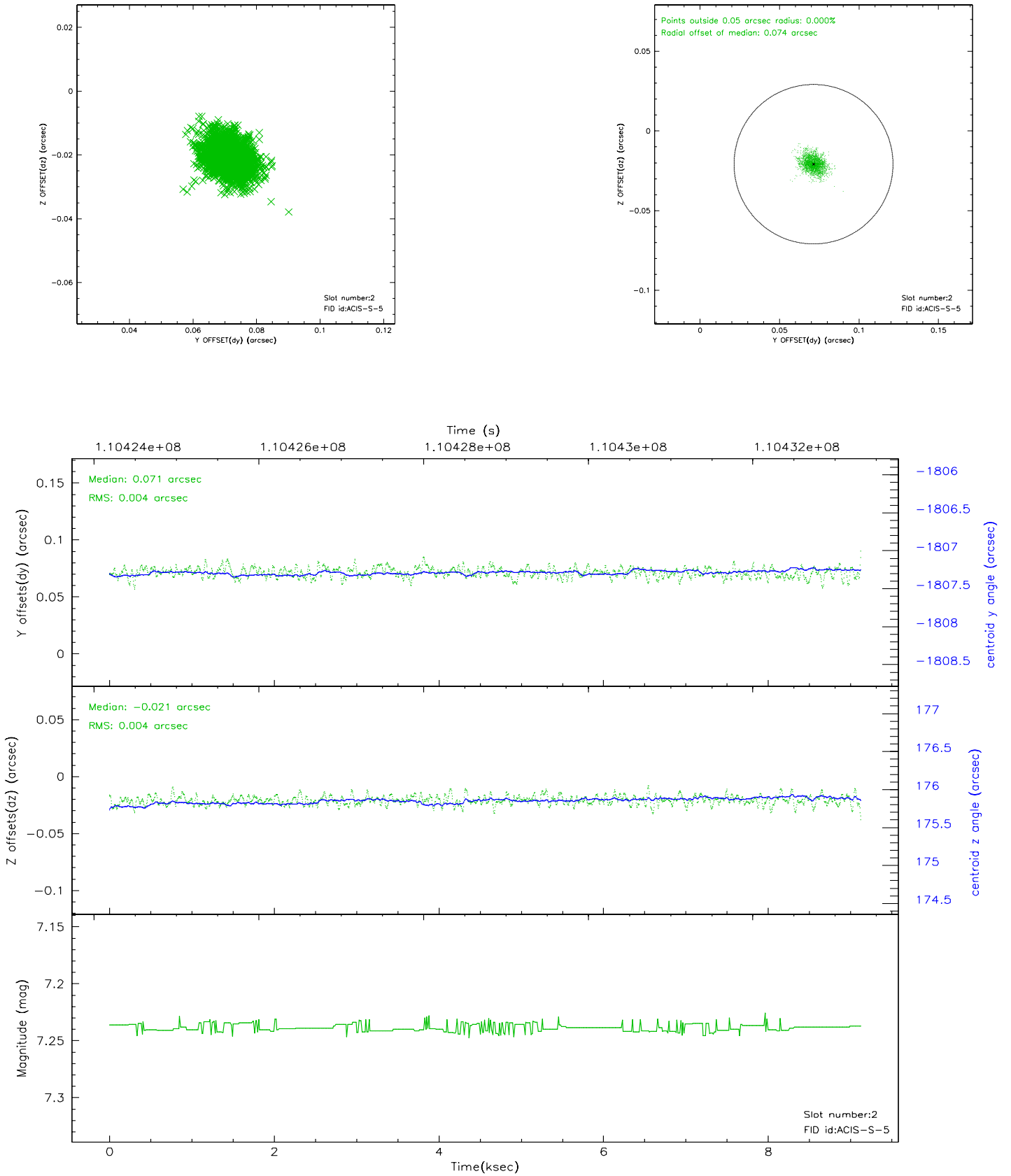
### 2.5.1 Slot 0



2.5.2 Slot 1

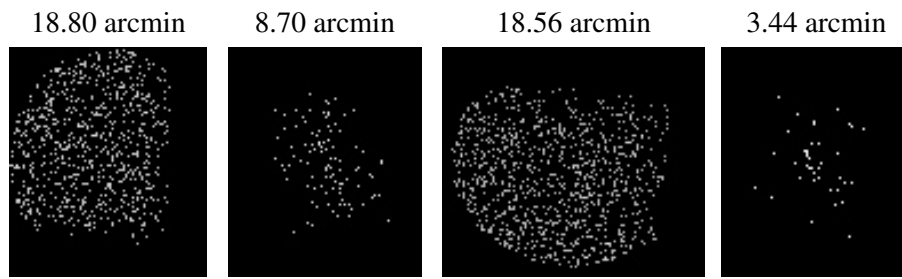


### 2.5.3 Slot 2





### 3 Point Sources



## A Summary

### A.1 Status

V&V Scientist	Jen Lauer
V&V Date (YYYY-MM-DD)	2006.12.11
V&V Edition	1
V&V Disposition and Status	OK
V&V Charge Time	9.1

### A.2 Comments