

# V&V Reference Report

## L2 ASCDS Version : 8.4.5

Observation 1963 - L2 Version 5  
Chandra X-Ray Center

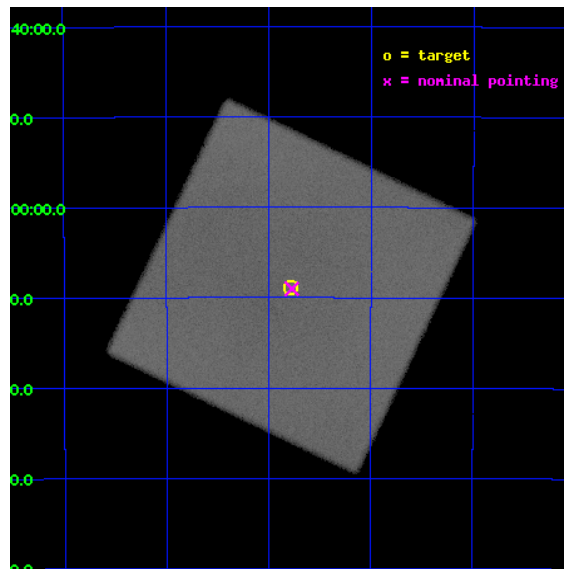
L2 Processing Date : Sep 25 2012

## Contents

<b>1</b>	<b>Front</b>	<b>2</b>
<b>2</b>	<b>OBI</b>	<b>3</b>
2.1	OBI . . . . .	3
2.1.1	Images . . . . .	3
2.1.2	Parameters . . . . .	4
2.1.3	Events . . . . .	4
2.2	Compared Parameters . . . . .	5
2.3	Aspect . . . . .	6
2.4	Star Slots . . . . .	9
2.4.1	Slot 3 . . . . .	9
2.4.2	Slot 4 . . . . .	10
2.4.3	Slot 5 . . . . .	11
2.4.4	Slot 6 . . . . .	12
2.4.5	Slot 7 . . . . .	13
2.5	FID Slots . . . . .	14
2.5.1	Slot 0 . . . . .	14
2.5.2	Slot 1 . . . . .	15
2.5.3	Slot 2 . . . . .	16
<b>A</b>	<b>Summary</b>	<b>17</b>
A.1	Status . . . . .	17
A.2	Comments . . . . .	17

# 1 Front

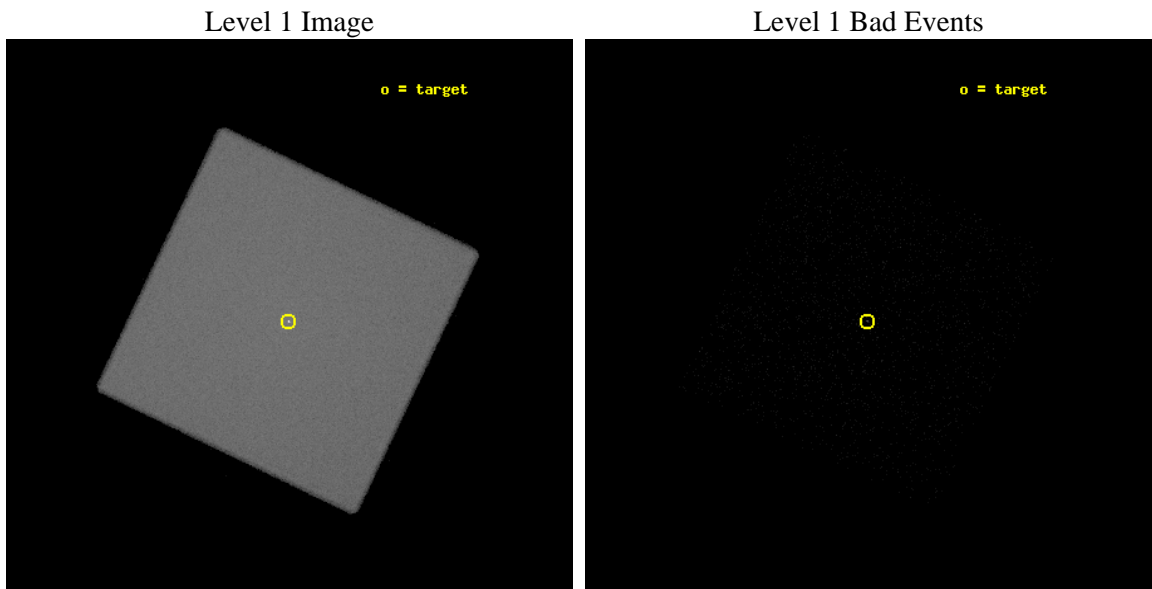
seq_num	500140	Sequence number
obs_id	1963	Observation id
title	CHANDRA DETAILED SPATIAL STUDY OF THE ``ANOMALOUS" X--RAY PULSARS	&#160
observer	Dr. Gianluca Israel	Principal investigator
object	1RXS J1708-4009	Source name
ra_targ	257.196667	Observer's specified target RA [deg]
dec_targ	-40.147417	Observer's specified target Dec [deg]
ra_nom	257.19309951361	Nominal RA [deg]
dec_nom	-40.150431091569	Nominal Dec [deg]
roll_nom	250.61350367883	Nominal Roll [deg]
revision	5	Processing version of data
ontime	9870.7503920346	[s]
livetime	7096.3165467725	Ontime multiplied by DTCOR
l2events	1239392	Number of level 2 events



## 2 OBI

### 2.1 OBI

#### 2.1.1 Images



### 2.1.2 Parameters

obi_num	2	Obi number	sched_exp_time	10000.000000	[s] Scheduled observation exposure time
ascdsver	8.4.5	Processing system revision	ontime	9870.7503920346	[s]
caldsver	4.5.1.1	&#160	l1events	1724809	Number of level 1 events
date	2012-09-26T00:24:27	Date and time of file creation			
revision	5	Processing version of data			

### 2.1.3 Events

#### Level 1 Events

	<b>segment 0</b>
level 1 events	1724809
rejected events	15930
rejected %	0%

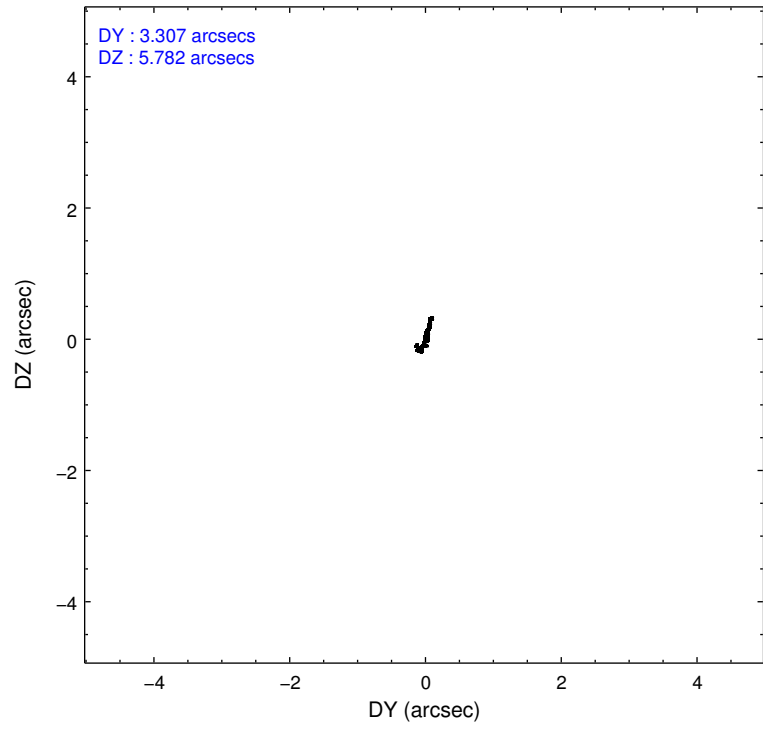
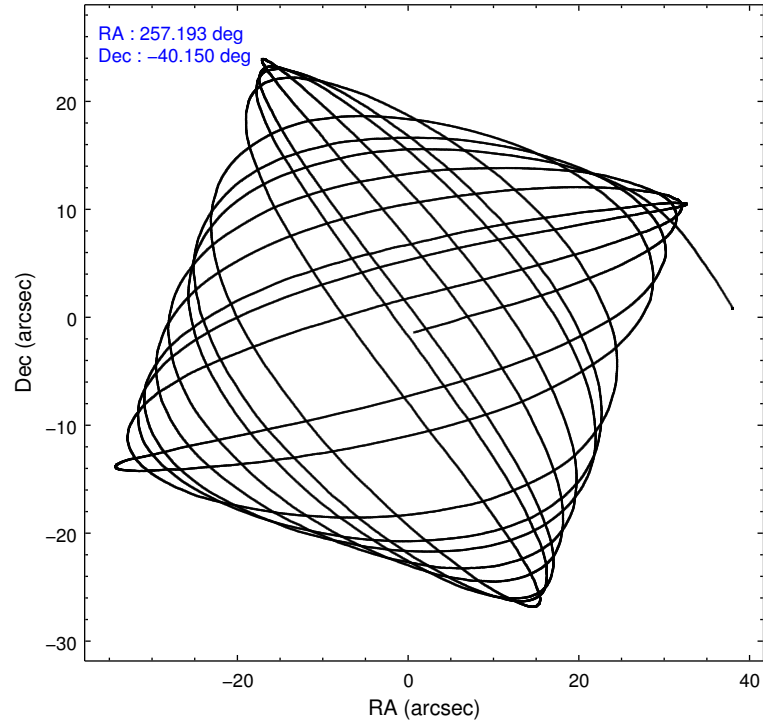


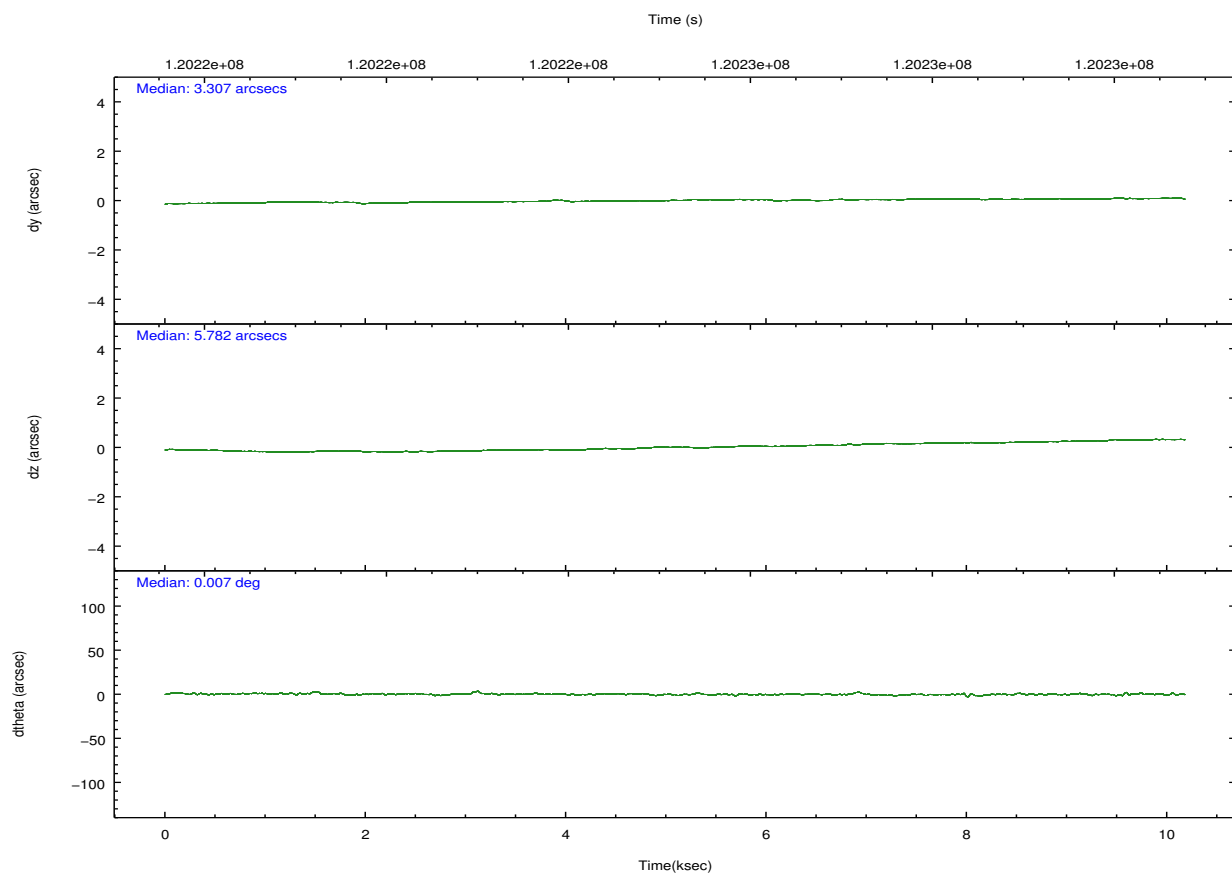
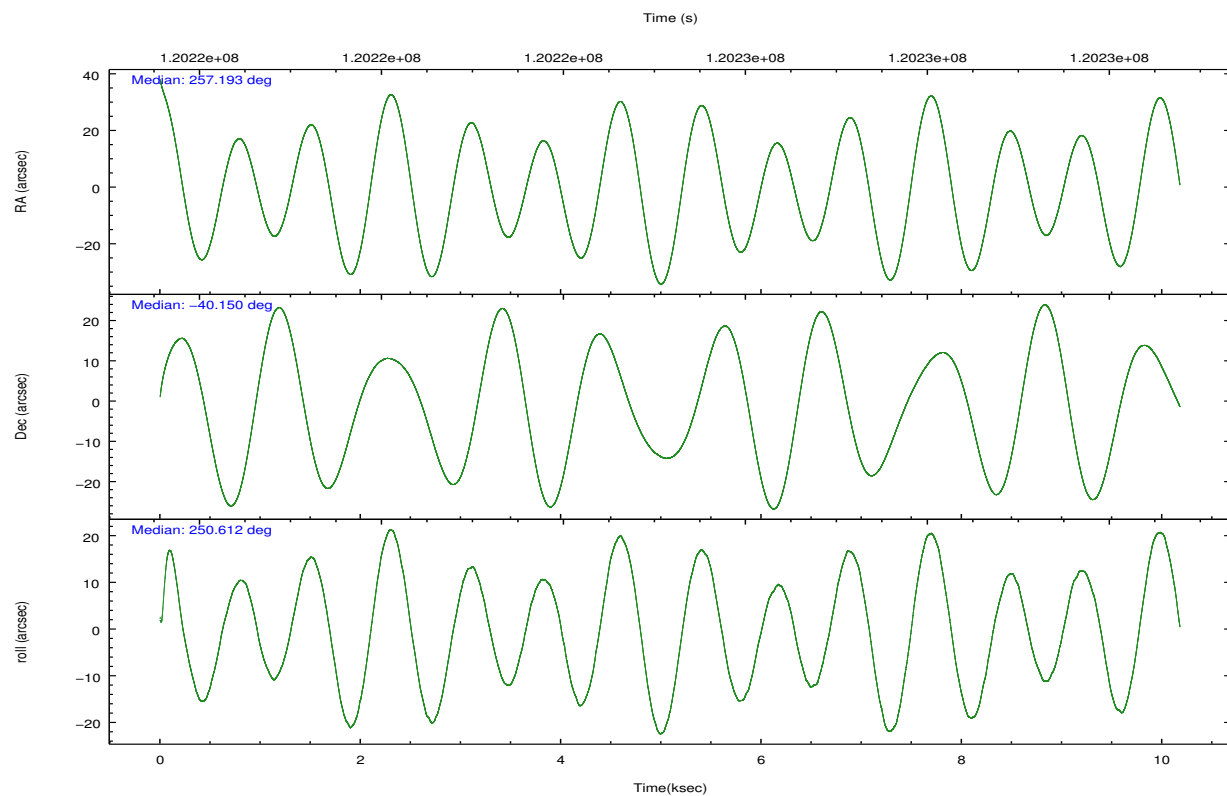
## 2.2 Compared Parameters

Parameter	Planned	Actual
Instrument	HRC	HRC
Detector	HRC-I	HRC-I
Grating	NONE	NONE
Data mode	OBSERVING	OBSERVING
Observation mode	POINTING	POINTING
[deg] Pointing RA	257.185684	257.1930995136071
[deg] Pointing Dec	-40.123988	-40.15043109156947
[deg] Pointing Roll	250.704246	250.6135036788302
[mm] SIM focus pos	-1.040293	-1.038866356238299
[mm] SIM defocus	0	0.001426264420575141
[mm] SIM translation stage pos	126.985494	126.9854943052878
[mm] SIM translation stage offset	0	-5.413686238853188e-06
[s] Observation start time (MET)	120220263.184000	120219387.3466
Observation start date	2001-10-23T10:29:59	2001-10-23T10:16:27
[s] Observation end time (MET)	120230263.184000	120230968.30956
Observation end date	2001-10-23T13:16:39	2001-10-23T13:29:28

Parameter	Planned	Actual
Obspar format version number	7	7
Obspar file type	PREDICTED	ACTUAL
Obspar update status	NONE	UPDATED

## 2.3 Aspect



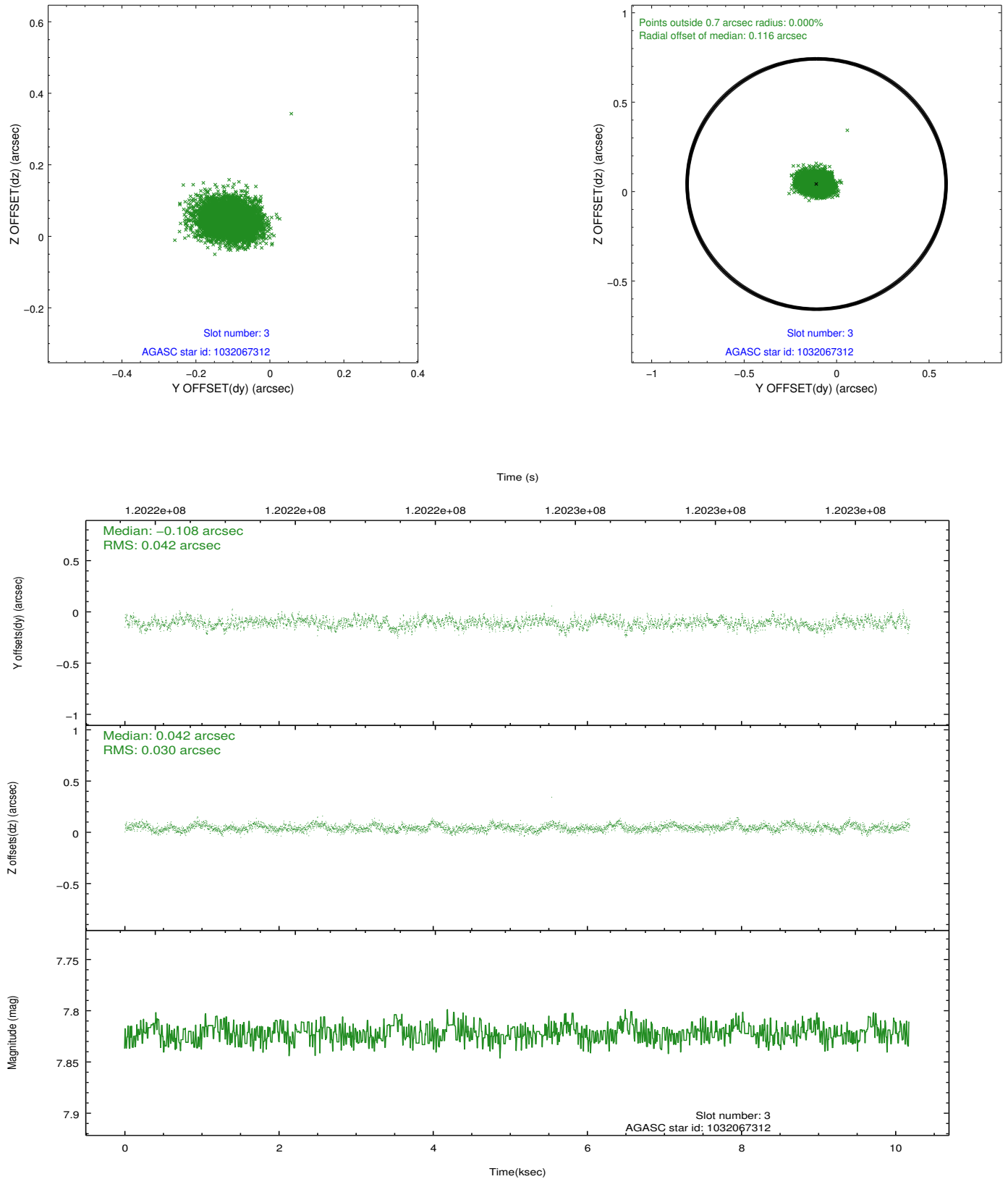


### Slot Statistics

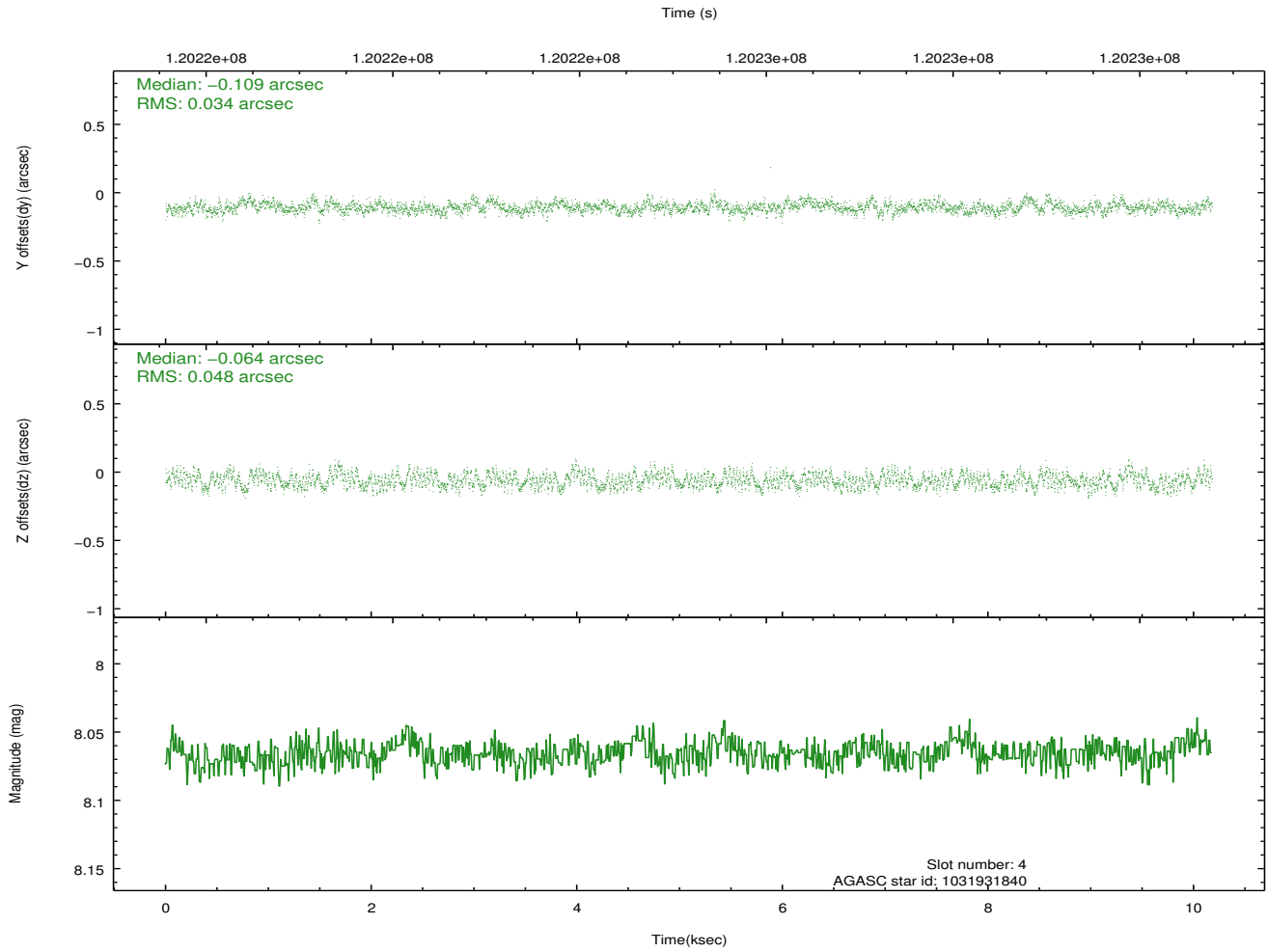
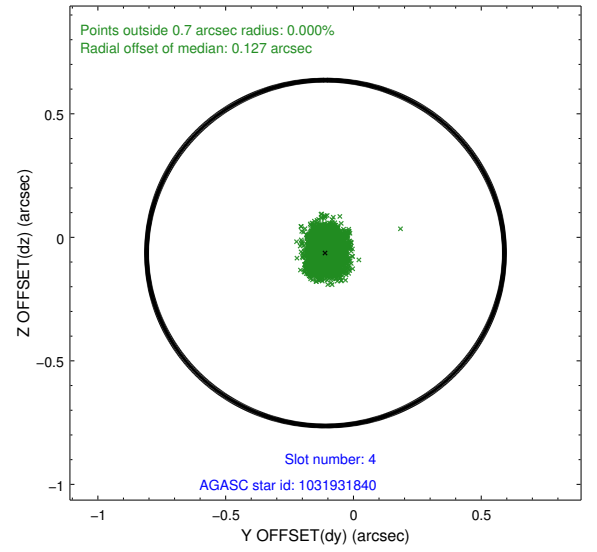
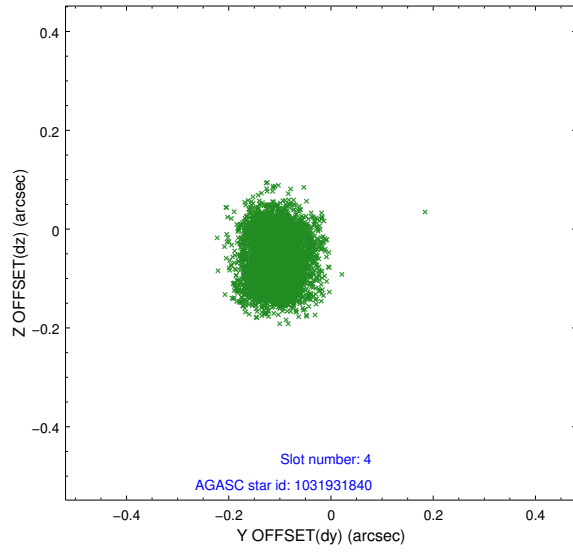
slot	status	id	mag	n_pts	med_dy	med_dz	dr1	dr2	ra	dec	mean_y	mean_z
0	FID	HRC-I-1	6.94	2483	0.018	0.040	0.010	0.037	0.000000	0.000000	-758.73	-1293.64
1	FID	HRC-I-2	6.99	2483	0.044	-0.026	0.009	0.019	0.000000	0.000000	853.62	-1295.76
2	FID	HRC-I-3	7.03	2483	0.057	-0.102	0.011	0.027	0.000000	0.000000	-1186.89	1010.25
3	GUIDE	1032067312	7.82	4966	-0.108	0.042	0.055	0.089	258.048957	-39.760316	-2015.16	1825.76
4	GUIDE	1031931840	8.07	4966	-0.109	-0.064	0.063	0.100	256.966064	-39.446694	-2100.06	-1381.82
5	GUIDE	1031932624	8.31	4967	0.002	0.014	0.060	0.098	257.431727	-40.221910	108.97	754.57
6	GUIDE	1031929904	9.41	4964	0.143	-0.036	0.101	0.164	256.776341	-40.685313	2278.40	-386.22
7	GUIDE	1032061480	9.54	4962	0.074	0.043	0.106	0.179	257.546142	-40.441464	754.11	1310.20

## 2.4 Star Slots

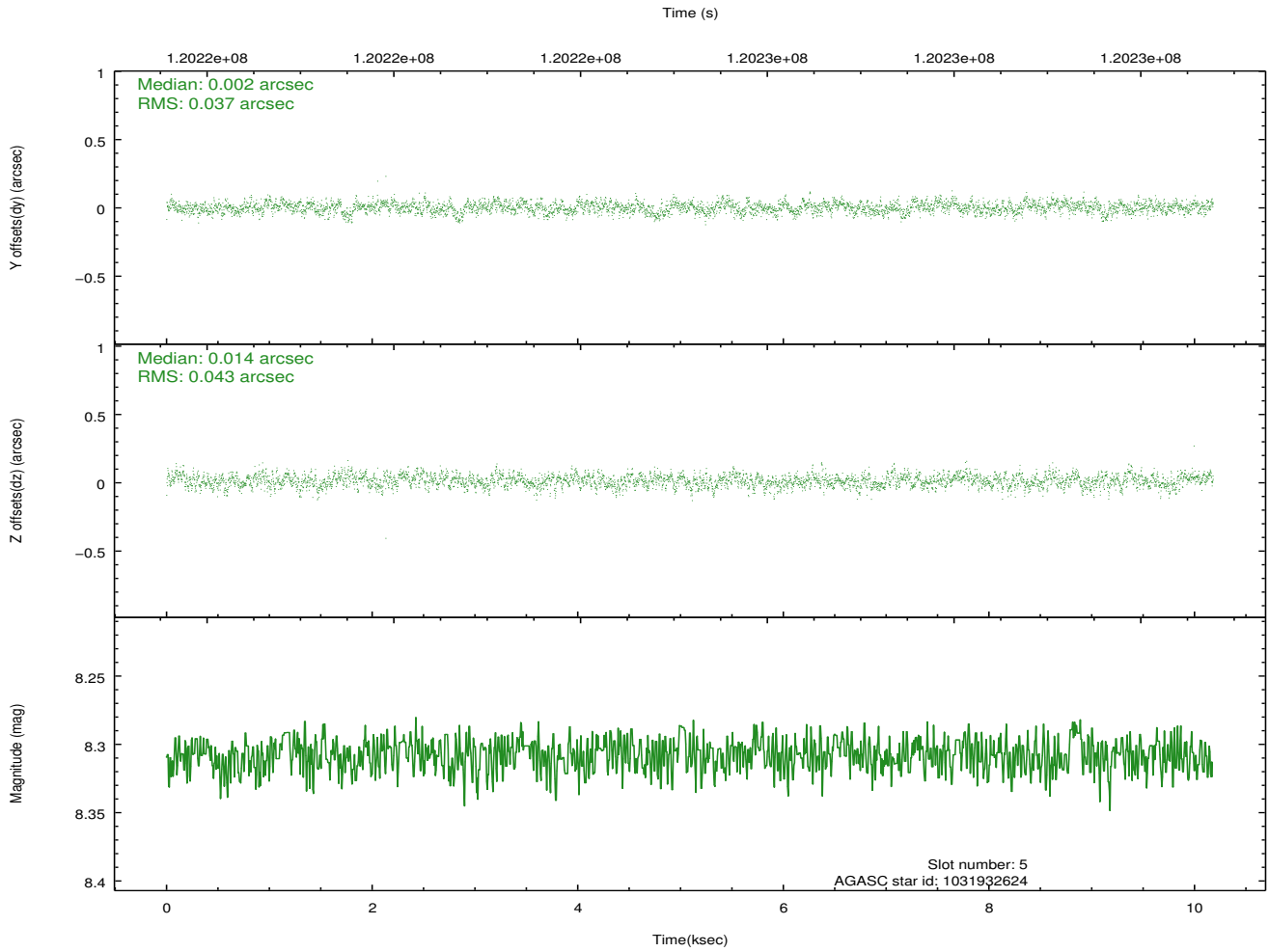
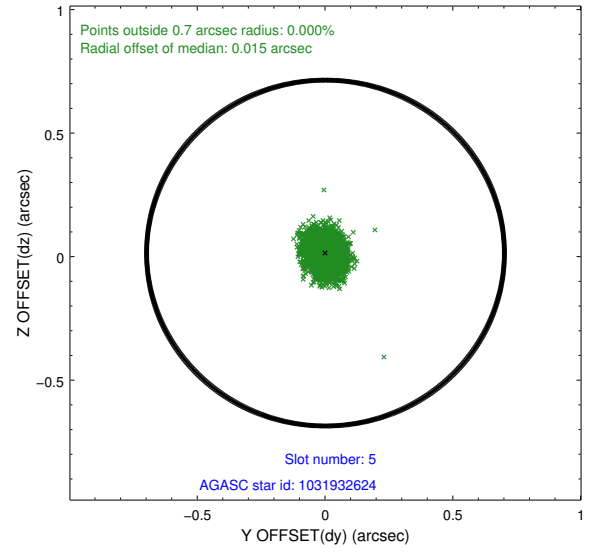
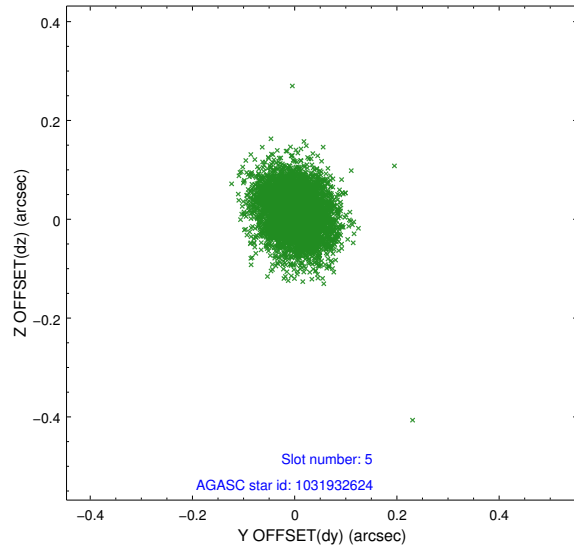
### 2.4.1 Slot 3



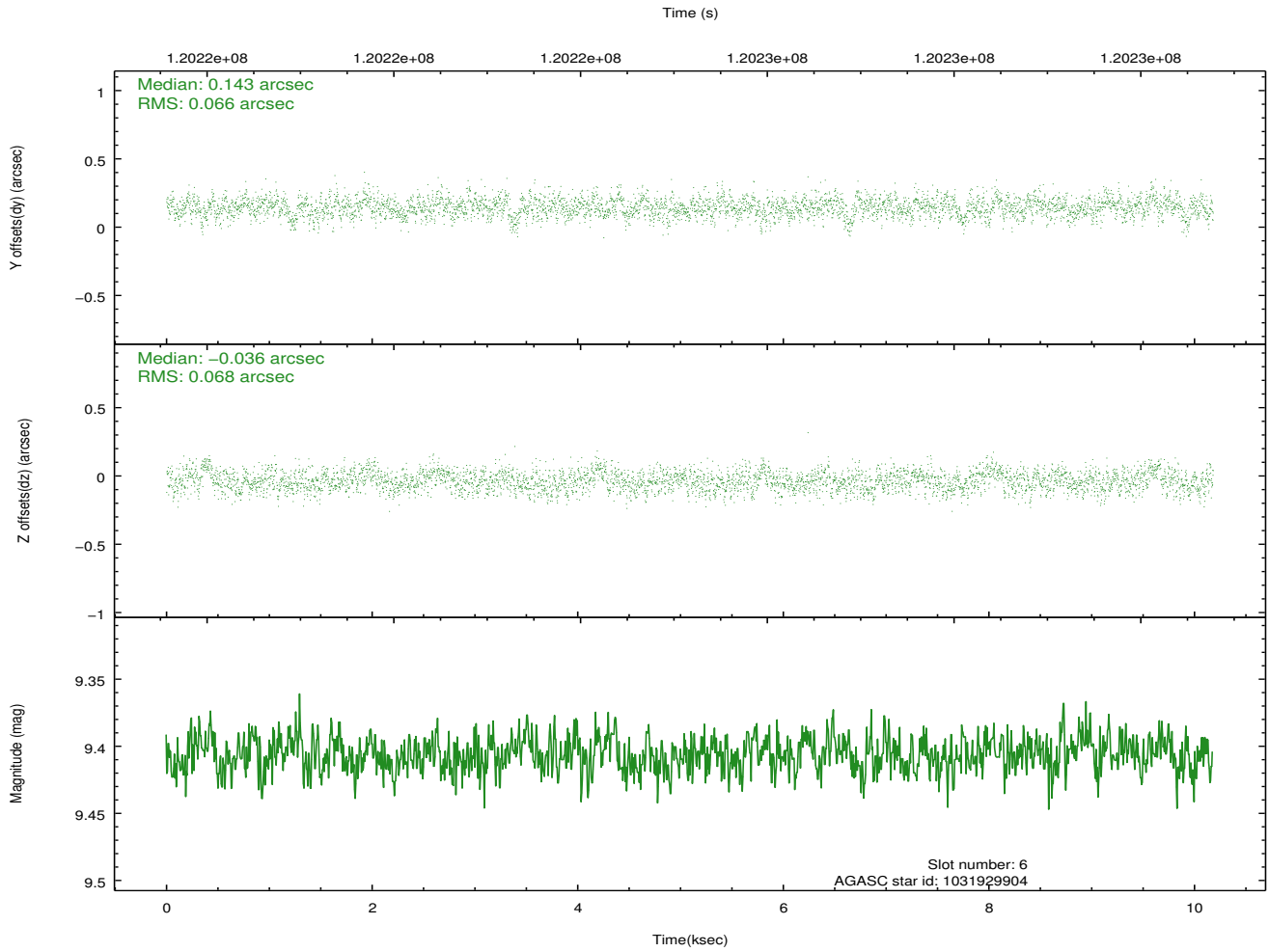
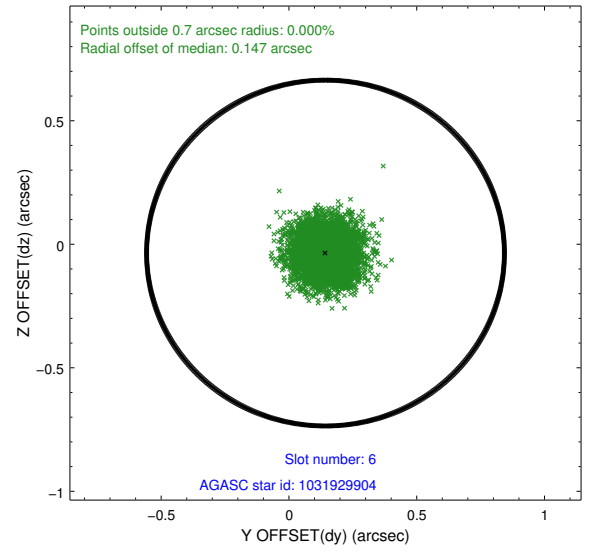
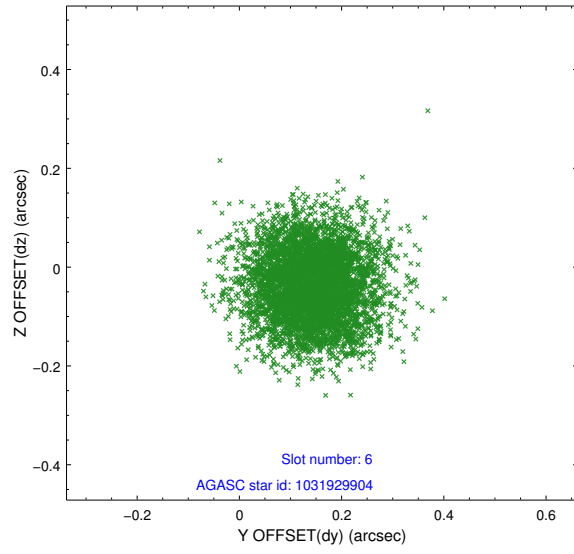
## 2.4.2 Slot 4



### 2.4.3 Slot 5

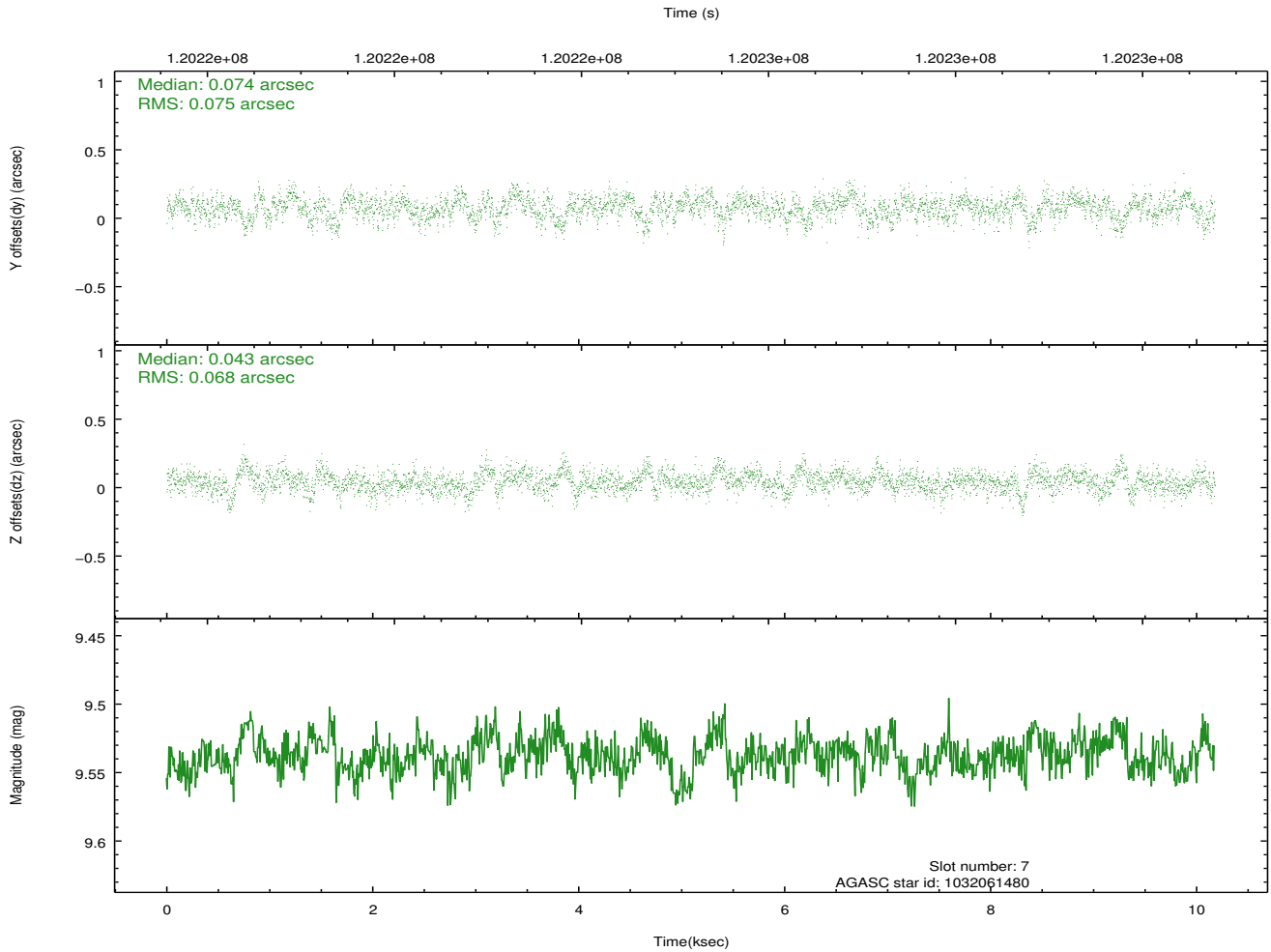
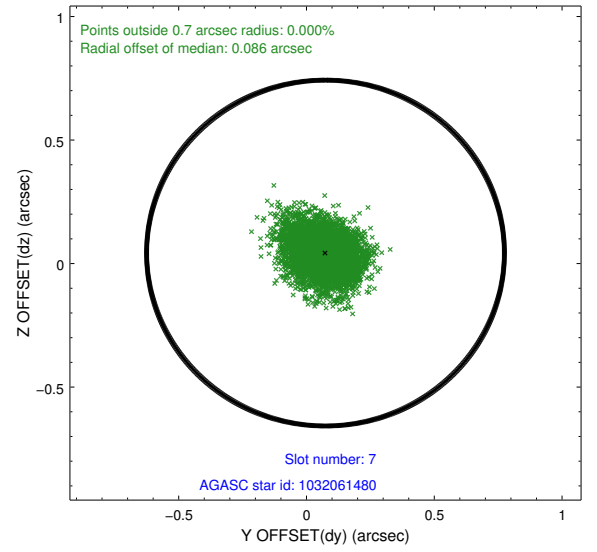
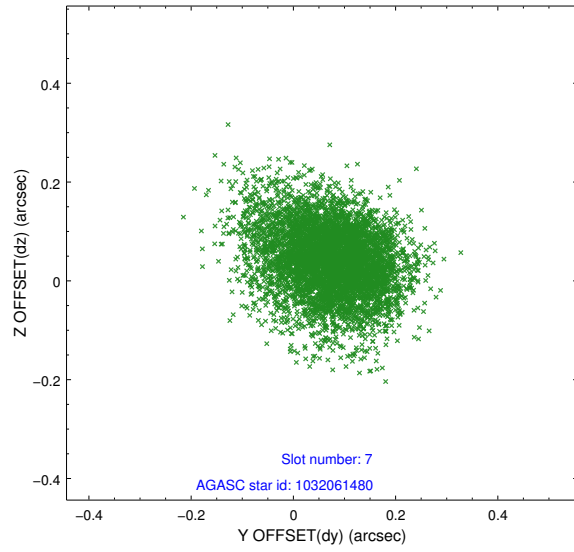


## 2.4.4 Slot 6



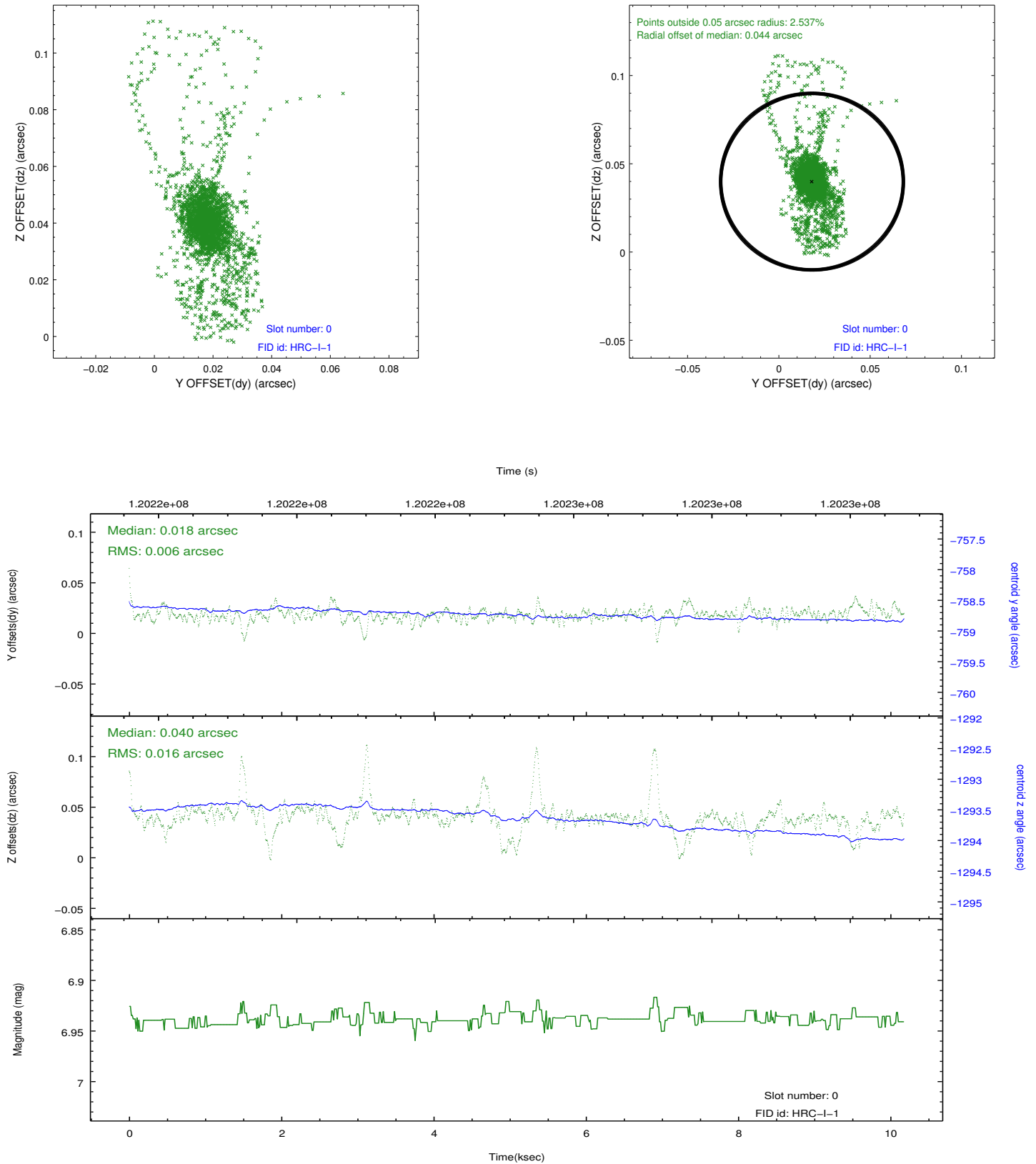


## 2.4.5 Slot 7

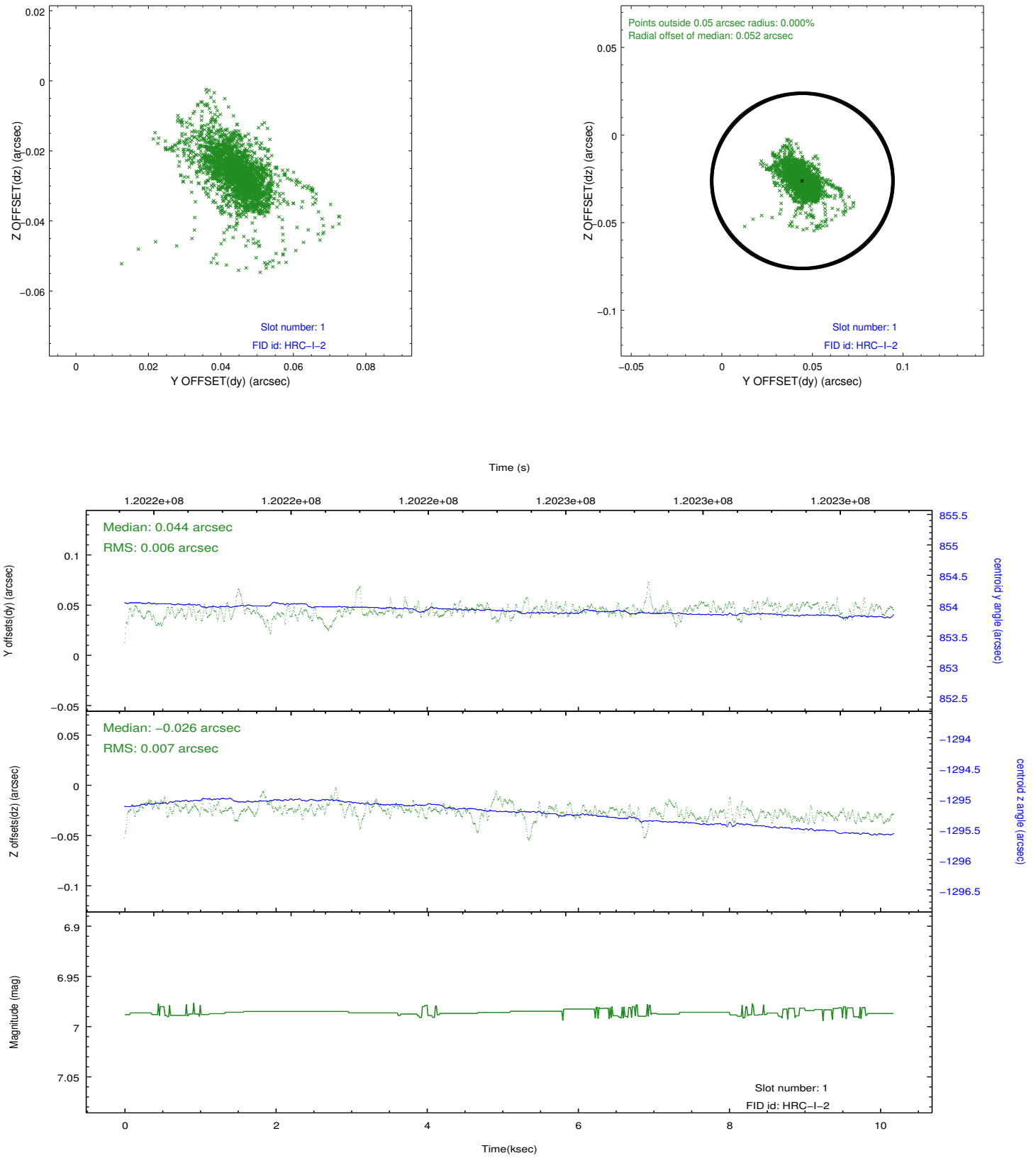


## 2.5 FID Slots

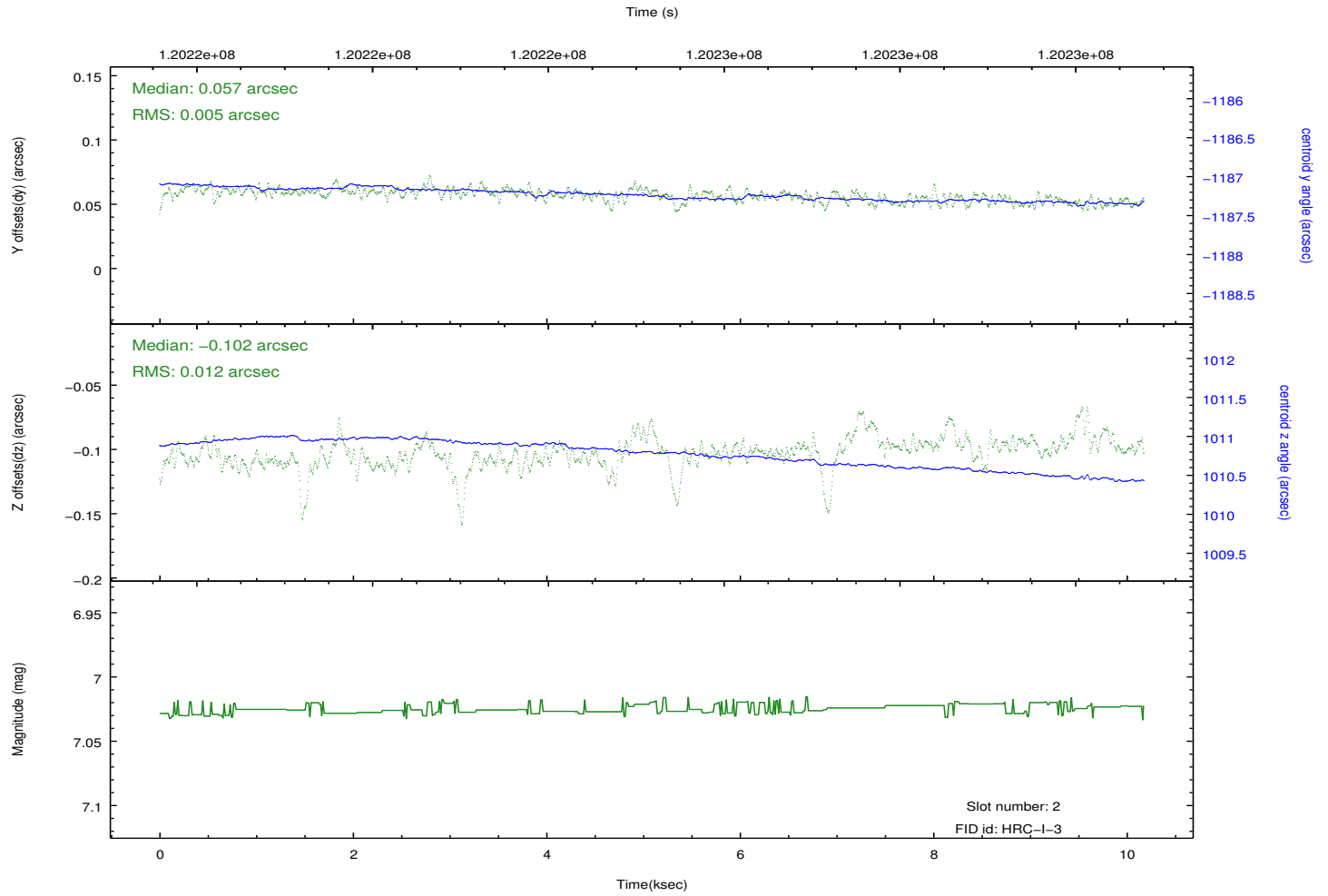
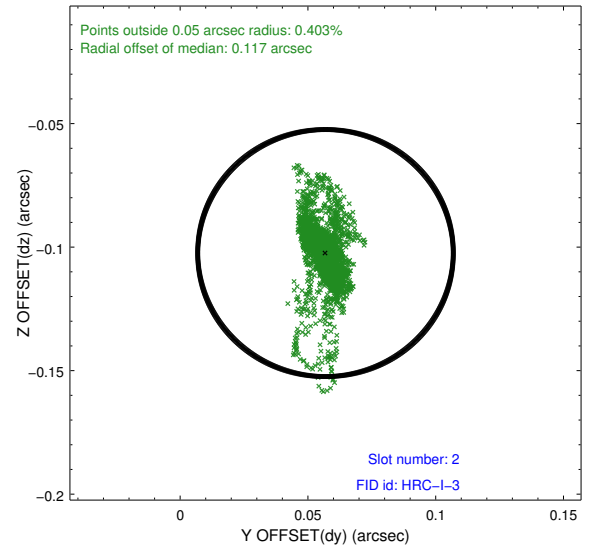
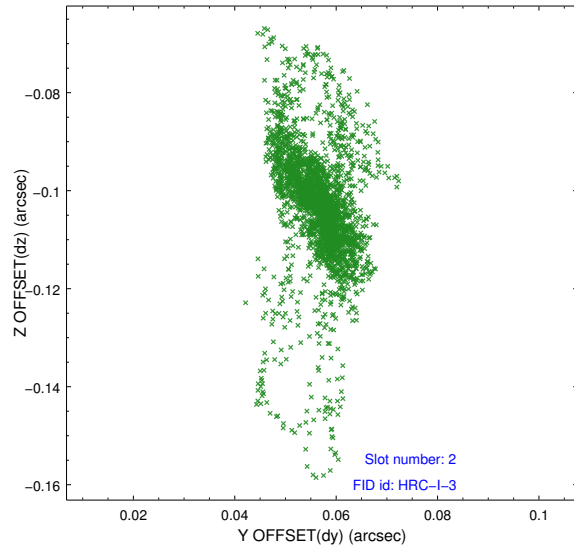
### 2.5.1 Slot 0



## 2.5.2 Slot 1



### 2.5.3 Slot 2



## A Summary

### A.1 Status

V&V Scientist	Jen Lauer
V&V Date (YYYY-MM-DD)	2012.09.27
V&V Edition	1
V&V Disposition and Status	OK
V&V Charge Time	9.868

### A.2 Comments