

V&V Reference Report

L2 ASCDS Version : 7.6.9

Observation 1948 - L2 Version 001
Chandra X-Ray Center

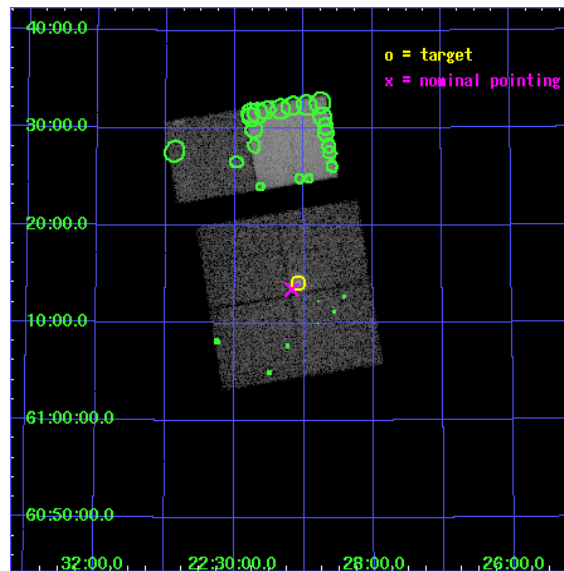
L2 Processing Date : Nov 8 2006

Contents

1	Front	2
2	OBI	3
2.1	OBI	3
2.1.1	Images	3
2.1.2	Bias	3
2.1.3	Parameters	4
2.1.4	Events	4
2.2	Compared Parameters	5
2.3	Aspect	6
2.4	Star Slots	9
2.4.1	Slot 3	9
2.4.2	Slot 4	10
2.4.3	Slot 5	11
2.4.4	Slot 6	12
2.4.5	Slot 7	13
2.5	FID Slots	14
2.5.1	Slot 0	14
2.5.2	Slot 1	15
2.5.3	Slot 2	16
3	Point Sources	17
A	Summary	18
A.1	Status	18
A.2	Comments	18

1 Front

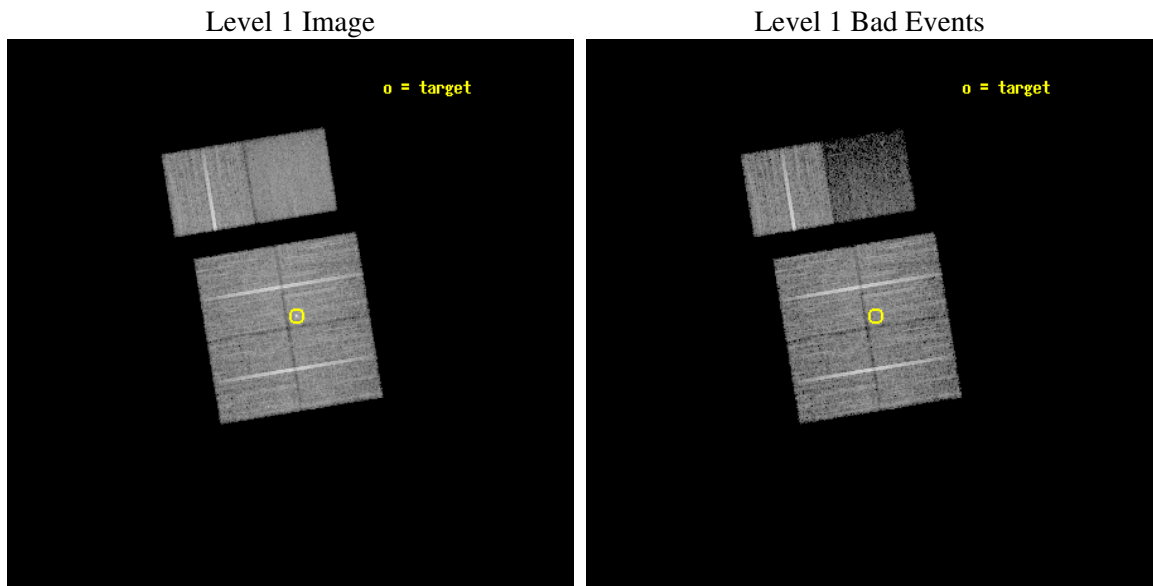
seq_num	500125
obs_id	1948
title	A POSSIBLE IDENTIFICATION FOR THE EGRET SOURCE 3EG J2227+6122
observer	Prof. JULES HALPERN
object	3EG J2227+6122
dtcycle	0
cycle	P
ra_targ	337.270833
dec_targ	61.236917
ra_nom	337.29339256516
dec_nom	61.224750232326
roll_nom	350.65422933821
revision	2
ontime	17955.200016722
livetime	17727.840462787
ontime0	17955.200016722
ontime1	17955.200016722
ontime2	17955.200016722
ontime3	17955.200016722
ontime6	17955.200016722
ontime7	17955.200016722
l2events	101475



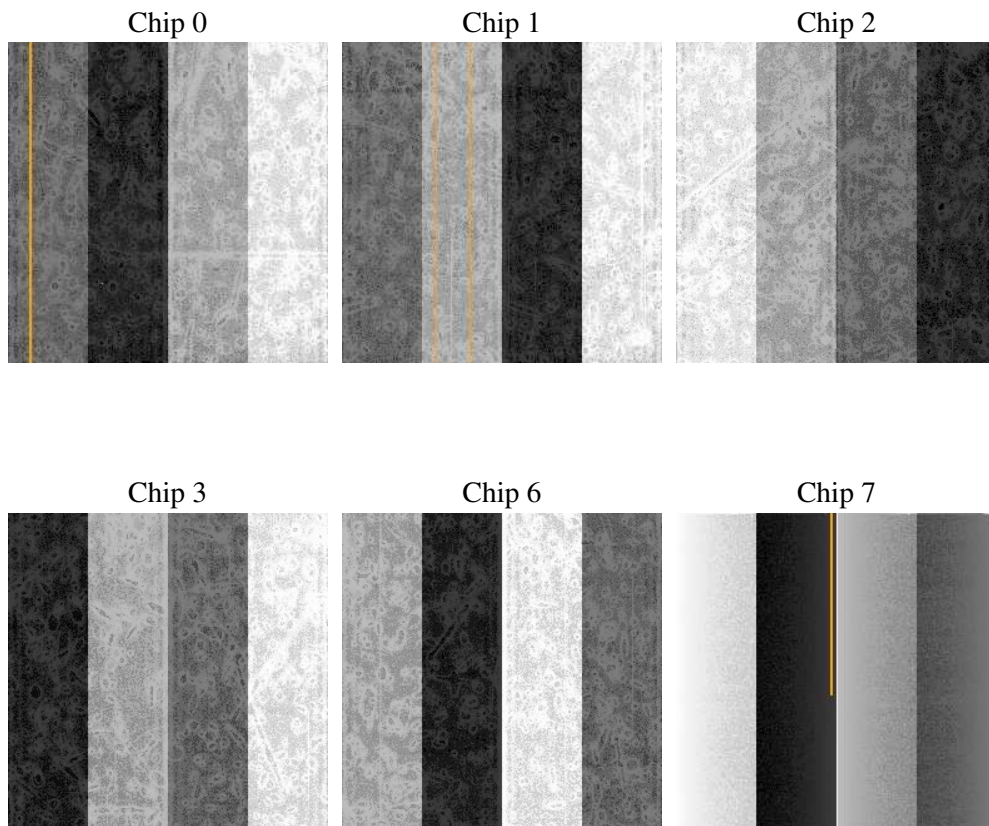
2 OBI

2.1 OBI

2.1.1 Images



2.1.2 Bias



2.1.3 Parameters

obi_num	0
ascdsver	7.6.9
caldbver	3.2.3
date	2006-11-08T20:17:44
revision	2

sched_exp_time	18000.000000
ontime	17958.36530225
ontime0	17961.60631232
ontime1	17958.36530225
ontime2	17958.36530225
ontime3	17958.36530225
ontime6	17958.36530225
ontime7	17958.365322173
l1events	488675

2.1.4 Events

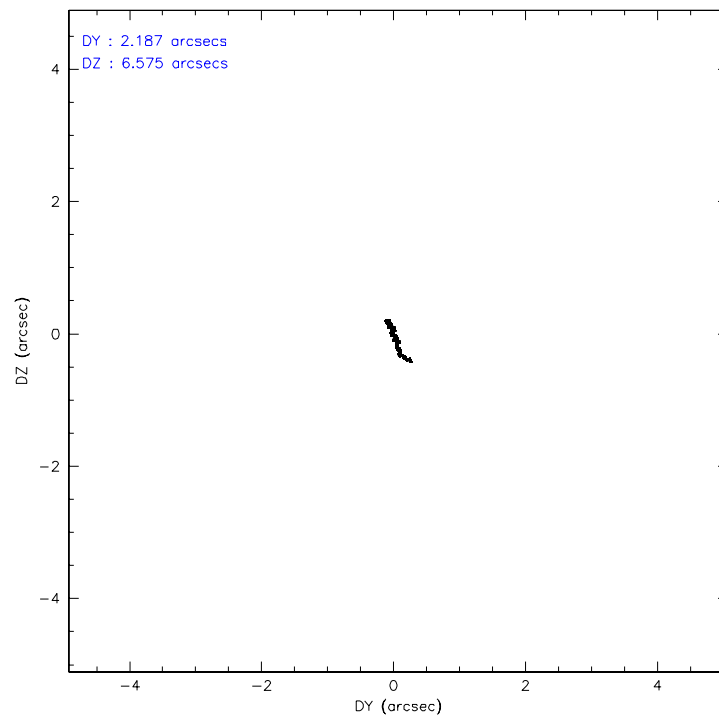
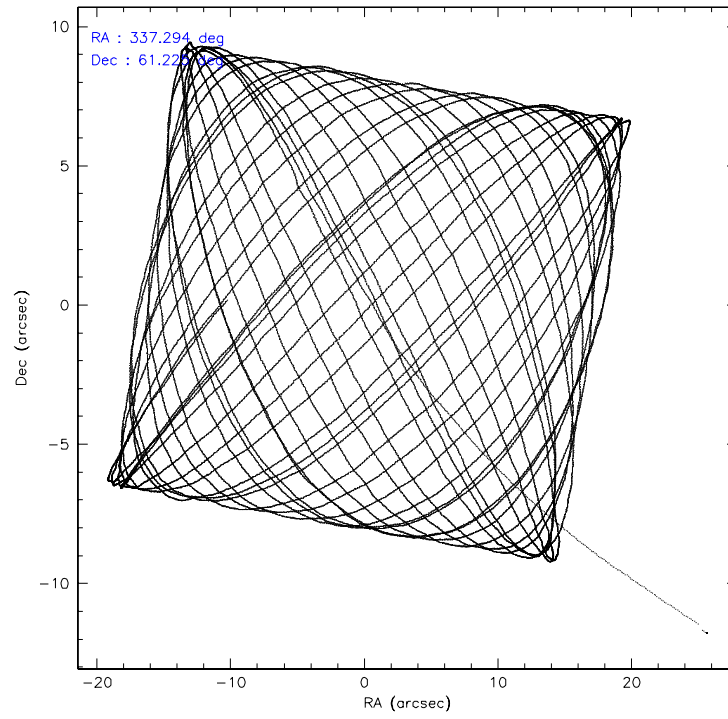
	ccd 0	ccd 1	ccd 2	ccd 3	ccd 6	ccd 7
level 1 events	76959	76647	84780	88047	87134	75108
rejected events	65881	64835	74411	76019	75322	20945
rejected %	85%	84%	87%	86%	86%	27%

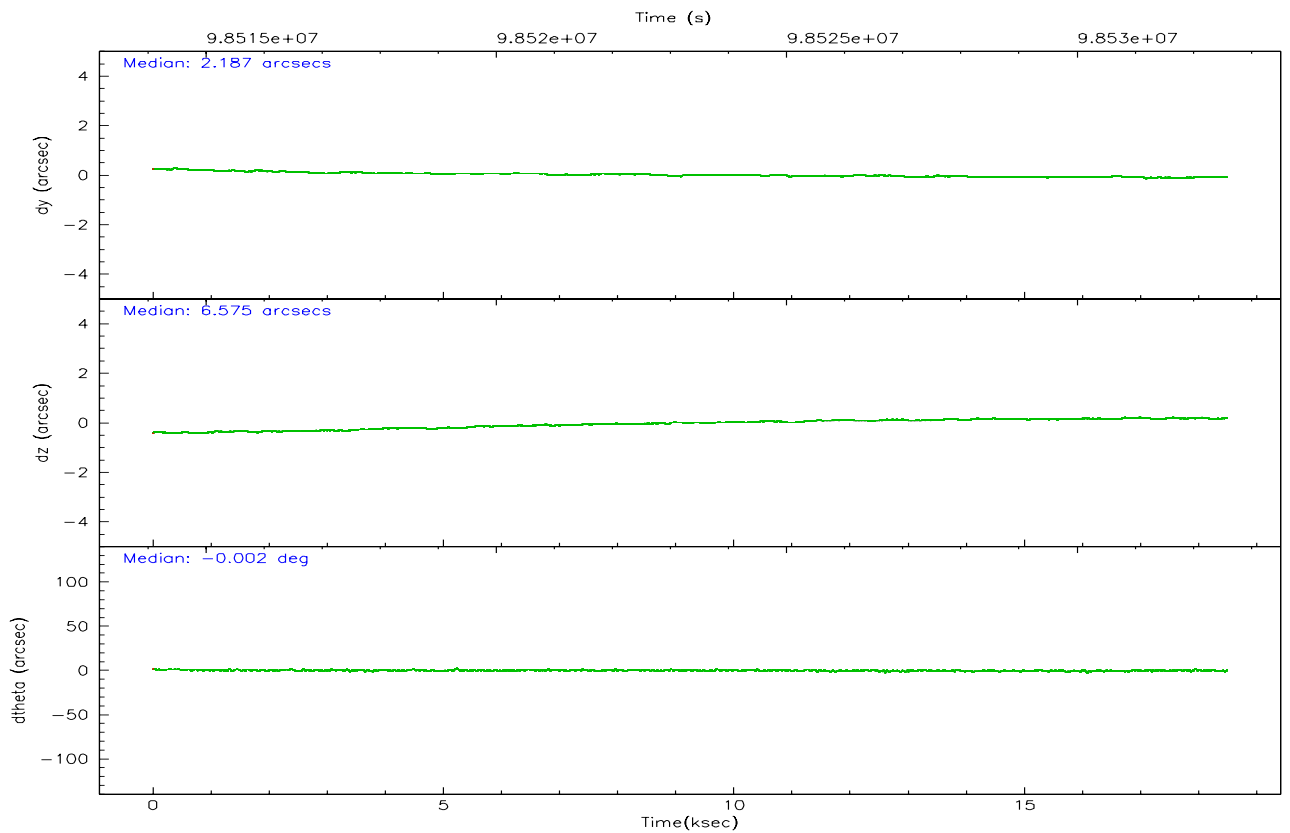
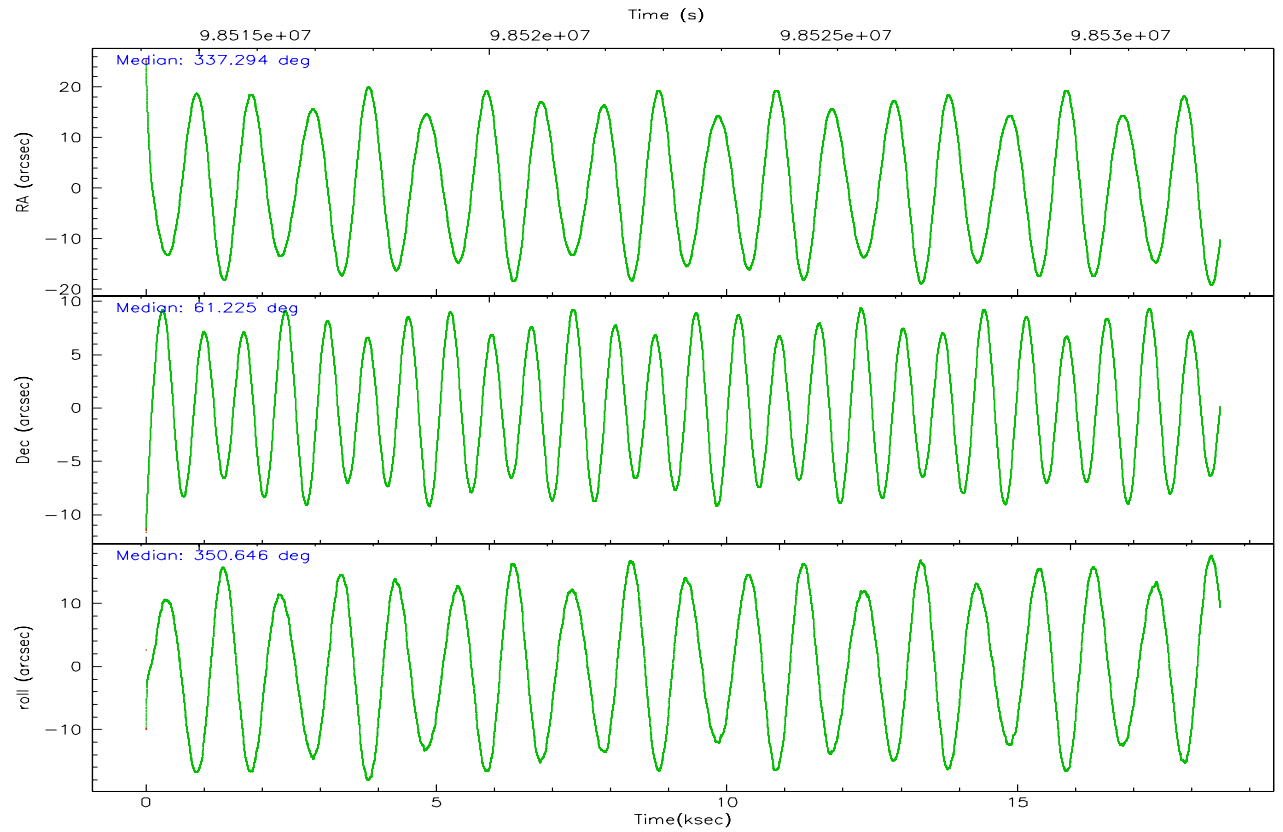
	ccd 0	ccd 1	ccd 2	ccd 3	ccd 6	ccd 7
grade 0 events	5903	6488	5607	6891	6702	6309
	7%	8%	6%	7%	7%	8%
grade 1 events	43	43	40	50	54	43
	0%	0%	0%	0%	0%	0%
grade 2 events	1957	1891	1901	1927	1936	13399
	2%	2%	2%	2%	2%	17%
grade 3 events	1010	1053	881	985	976	4029
	1%	1%	1%	1%	1%	5%
grade 4 events	947	1040	870	938	934	4025
	1%	1%	1%	1%	1%	5%
grade 5 events	1208	1397	1144	1398	1553	3844
	1%	1%	1%	1%	1%	5%
grade 6 events	1263	1340	1114	1291	1267	26404
	1%	1%	1%	1%	1%	35%
grade 7 events	64628	63395	73223	74567	73712	17055
	83%	82%	86%	84%	84%	22%

2.2 Compared Parameters

Parameter	Planned	Actual	Parameter	Planned	Actual
Instrument	ACIS	ACIS	Obspar format version number	6	6
Detector	ACIS-012367	ACIS-012367	Obspar file type	PREDICTED	ACTUAL
Grating	NONE	NONE	Obspar update status	NONE	UPDATED
Data mode	FAINT	FAINT	Number of optional ACIS chips dropped	0	0
Observation mode	POINTING	POINTING	On-chip summing requested	N	N
Pointing RA	337.240058	337.2933925651573	Subarray requested	NONE	NONE
Pointing Dec	61.215071	61.22475023232577	Alternating exposures requested	N	N
Pointing Roll	350.492280	350.654229338214	Primary exposure time	0.000000	3.2
SIM focus pos (mm)	-0.782348	-0.7809083437167272			
SIM defocus (mm)	0	0.001439871863259334			
SIM translation stage pos (mm)	-233.592463	-233.5874344608287			
SIM translation stage offset (mm)	0	-0.005018542100998502			
Observation start time	98514581.184000	98513472.973094			
Observation start date	2001-02-14T05:08:37	2001-02-14T04:51:12			
Observation end time	98532581.184000	98533298.523858			
Observation end date	2001-02-14T10:08:37	2001-02-14T10:21:38			
Read mode	TIMED	TIMED			

2.3 Aspect



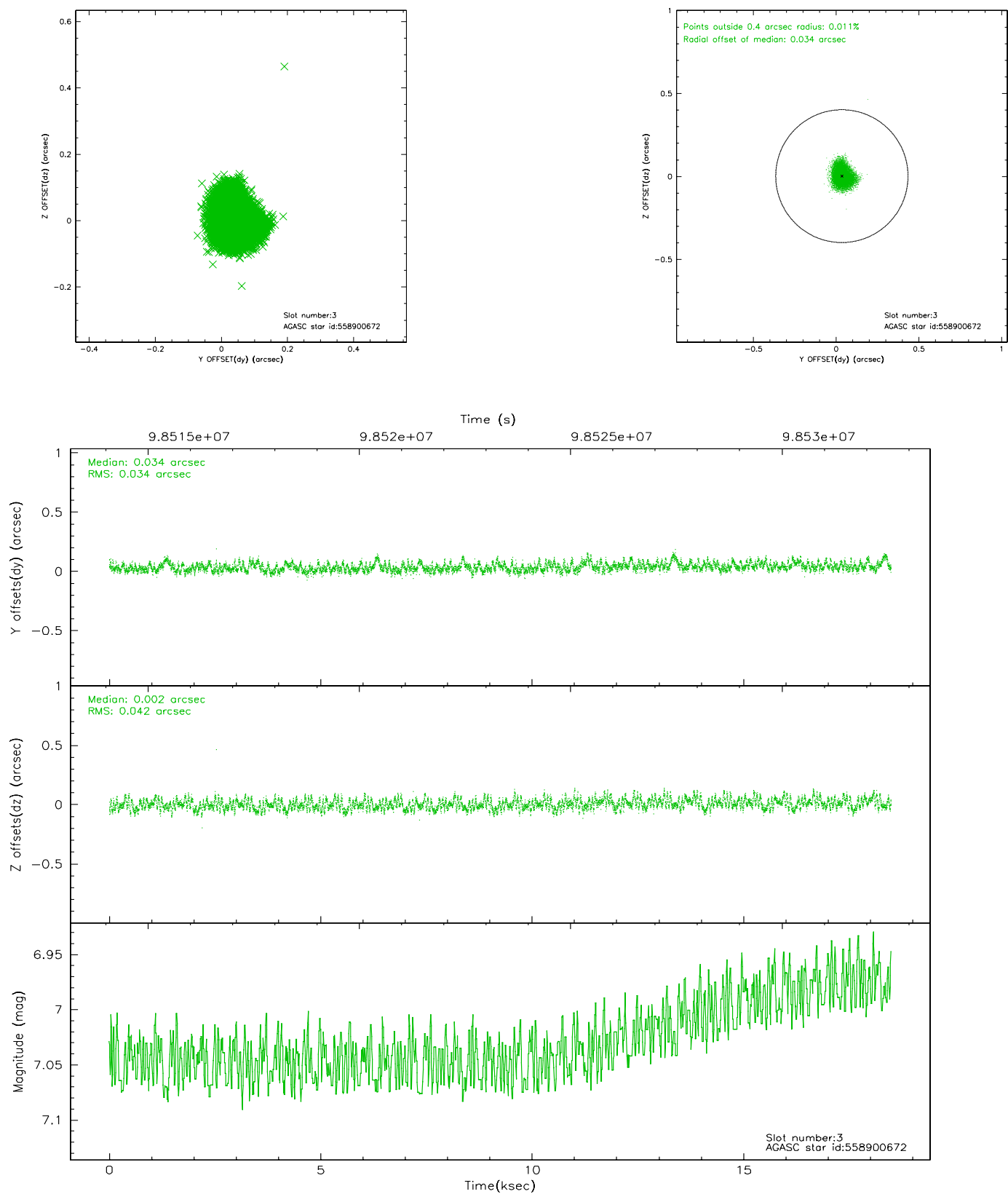


Slot Statistics

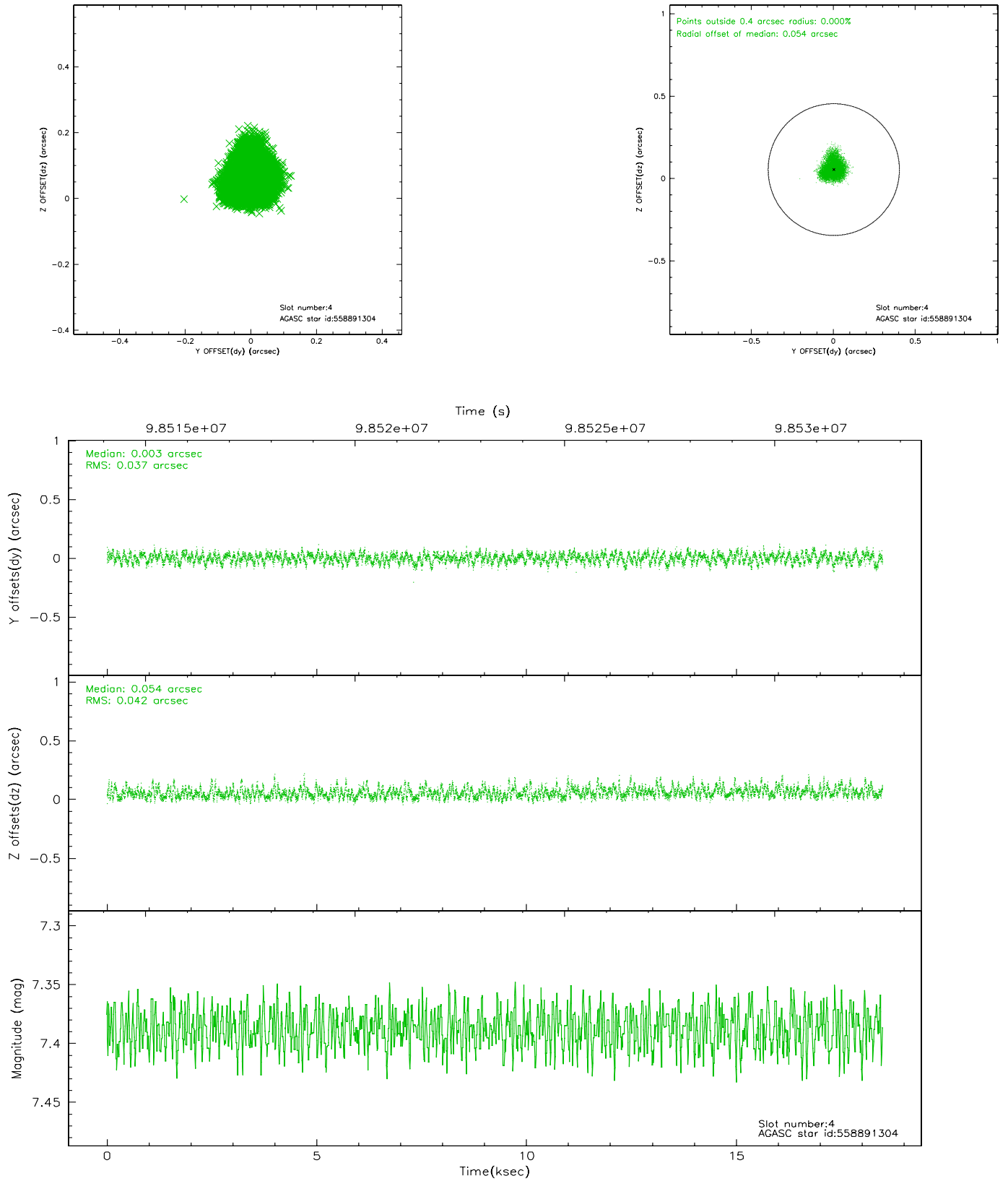
slot	status	id	mag	n_pts	med_dy	med_dz	dr1	dr2	ra	dec	mean_y	mean_z
0	FID	ACIS-I-2	7.15	4510	-0.023	-0.033	0.016	0.025	0.000000	0.000000	-756.59	-836.31
1	FID	ACIS-I-4	7.18	4510	-0.072	0.030	0.019	0.029	0.000000	0.000000	2157.33	1069.83
2	FID	ACIS-I-5	7.23	4510	-0.010	0.070	0.012	0.020	0.000000	0.000000	-1810.12	1067.95
3	GUIDE	558900672	7.03	9020	0.034	0.002	0.058	0.091	338.471449	61.778128	1728.51	2364.74
4	GUIDE	558891304	7.39	9019	0.003	0.054	0.060	0.094	337.635934	61.623738	424.01	1564.78
5	GUIDE	558894960	7.35	9020	-0.014	-0.011	0.046	0.072	337.171618	61.455544	-259.90	834.07
6	GUIDE	558897568	8.08	9019	-0.035	0.013	0.057	0.092	337.247030	60.671143	335.12	-1929.59
7	GUIDE	558894672	8.49	9015	0.012	-0.058	0.083	0.135	336.308268	60.836317	-1389.25	-1604.30

2.4 Star Slots

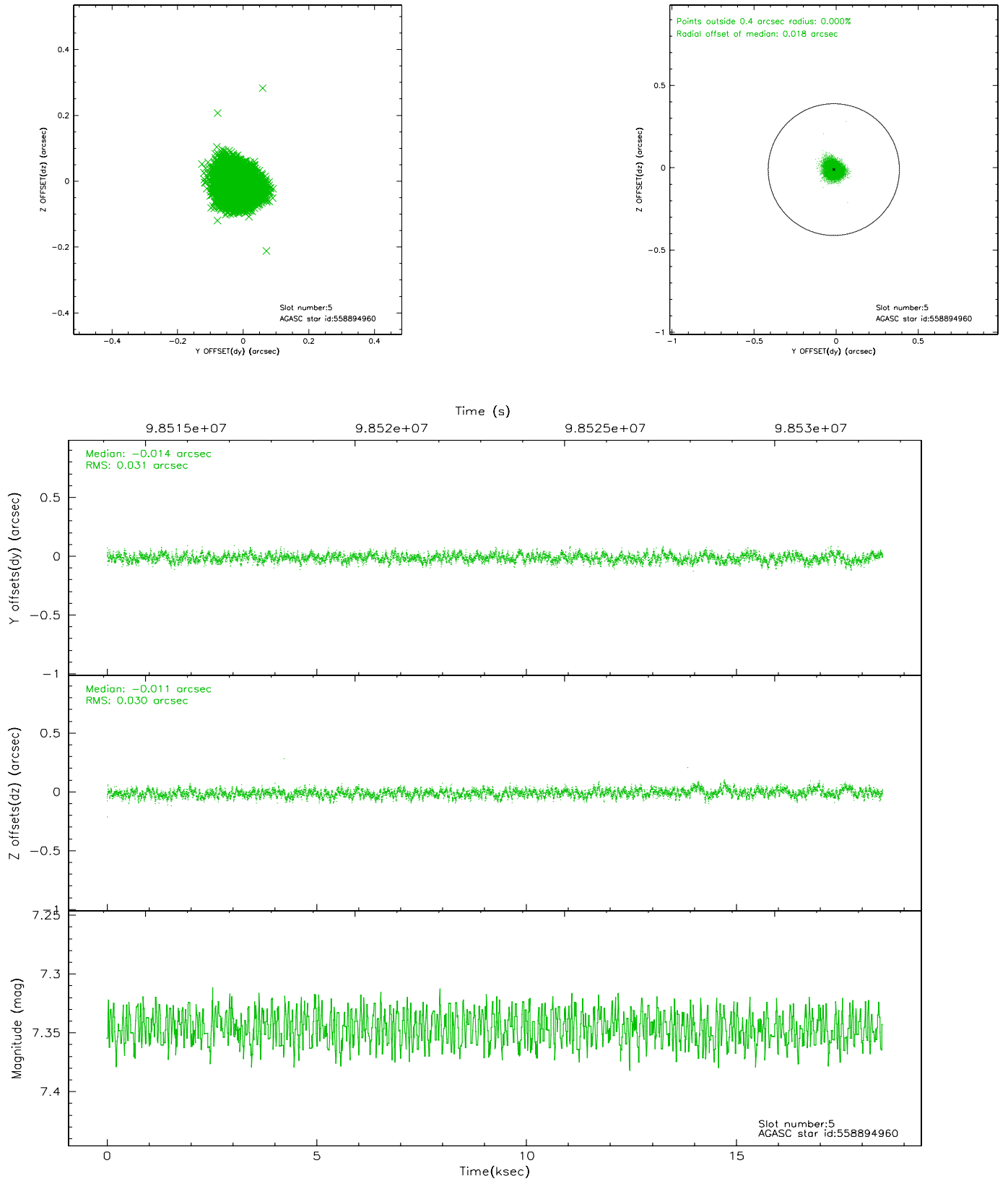
2.4.1 Slot 3



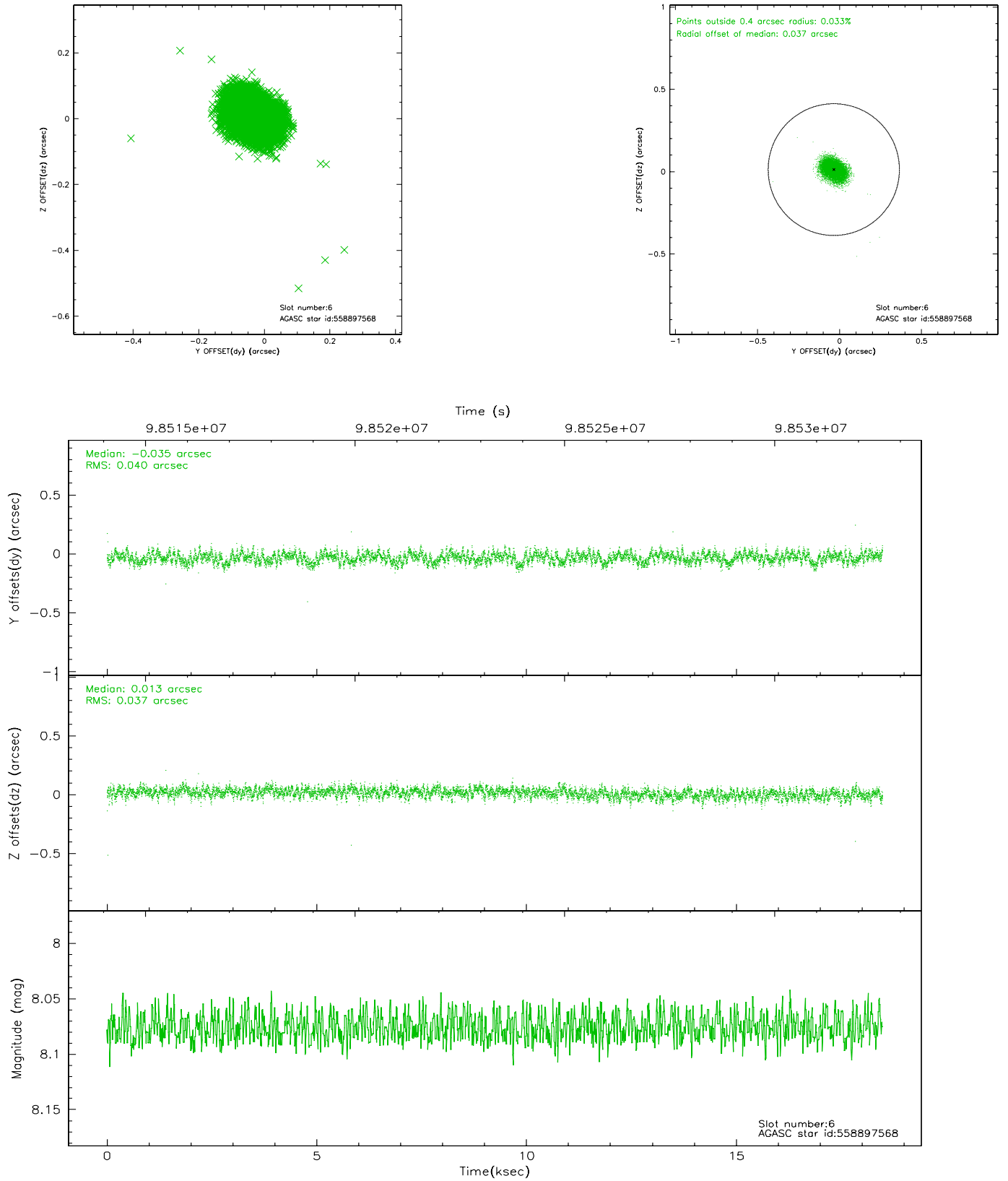
2.4.2 Slot 4



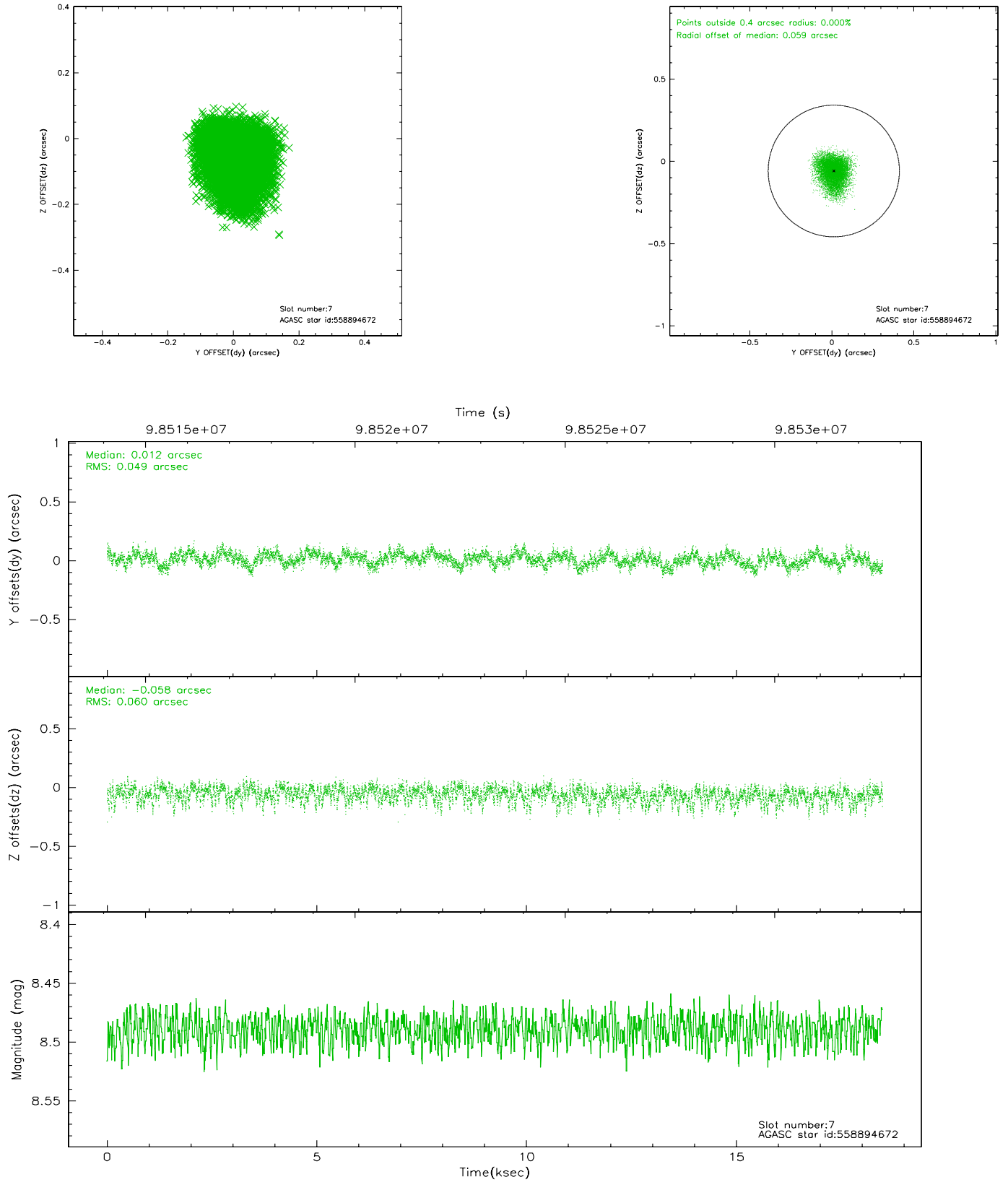
2.4.3 Slot 5



2.4.4 Slot 6

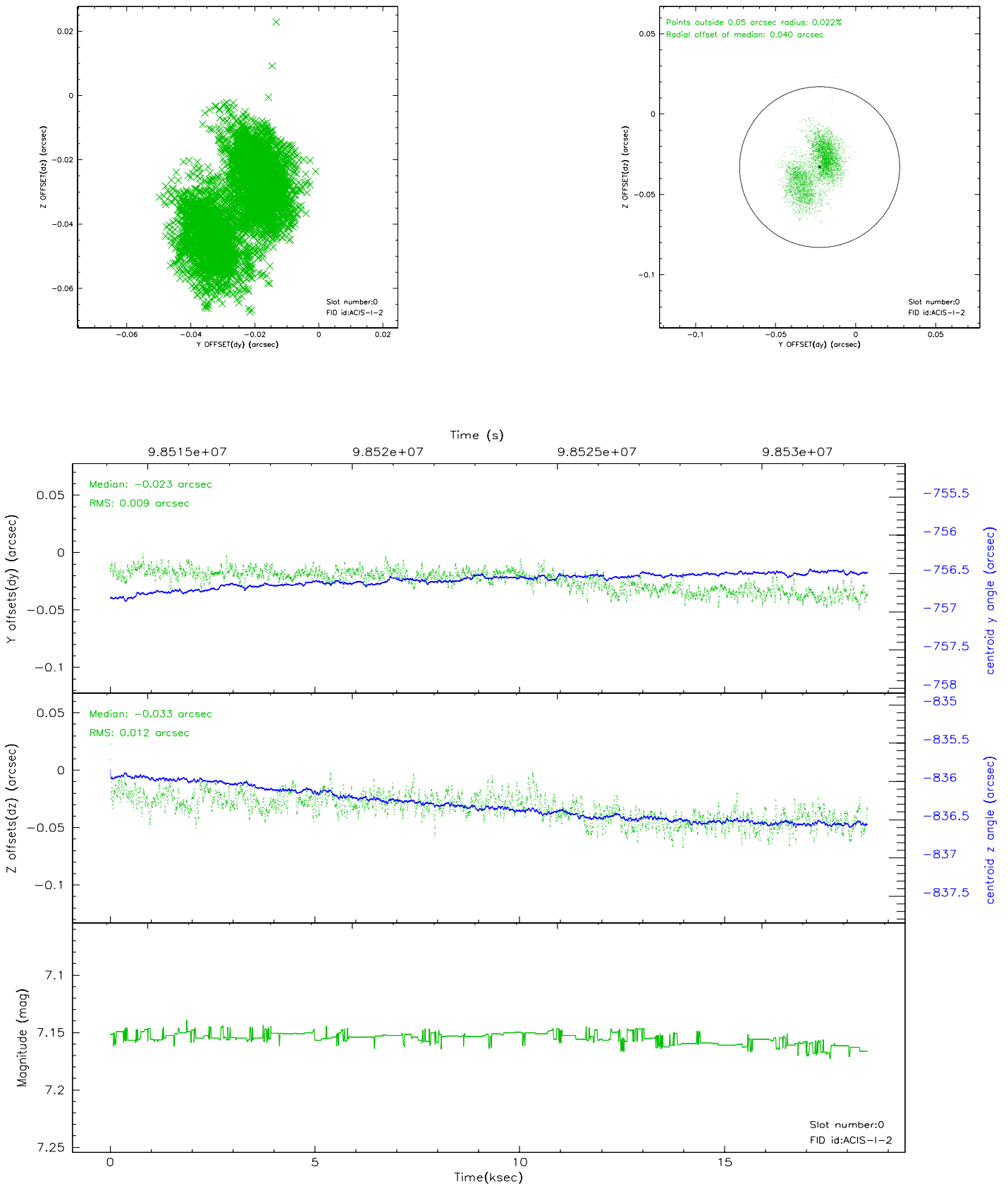


2.4.5 Slot 7

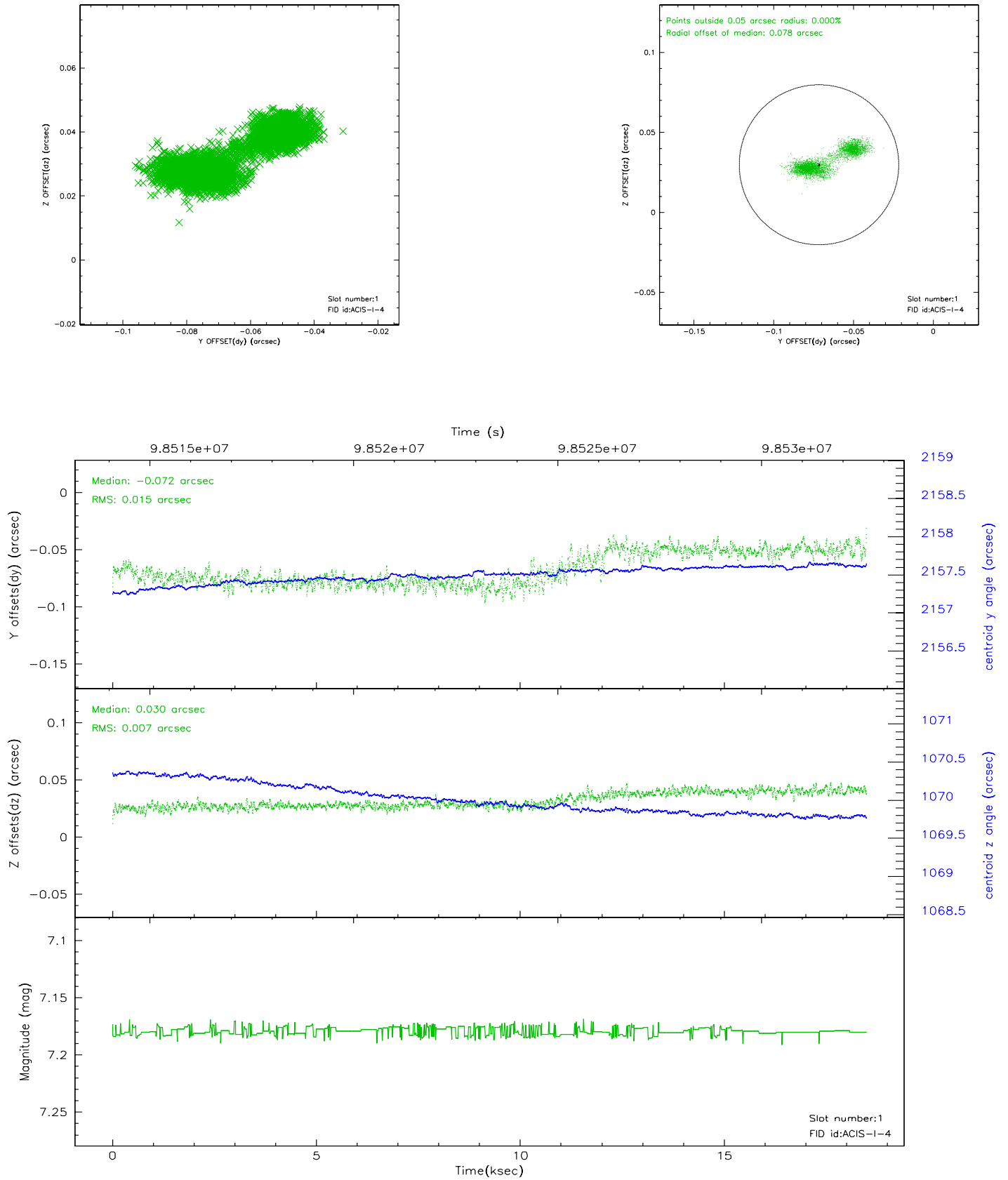


2.5 FID Slots

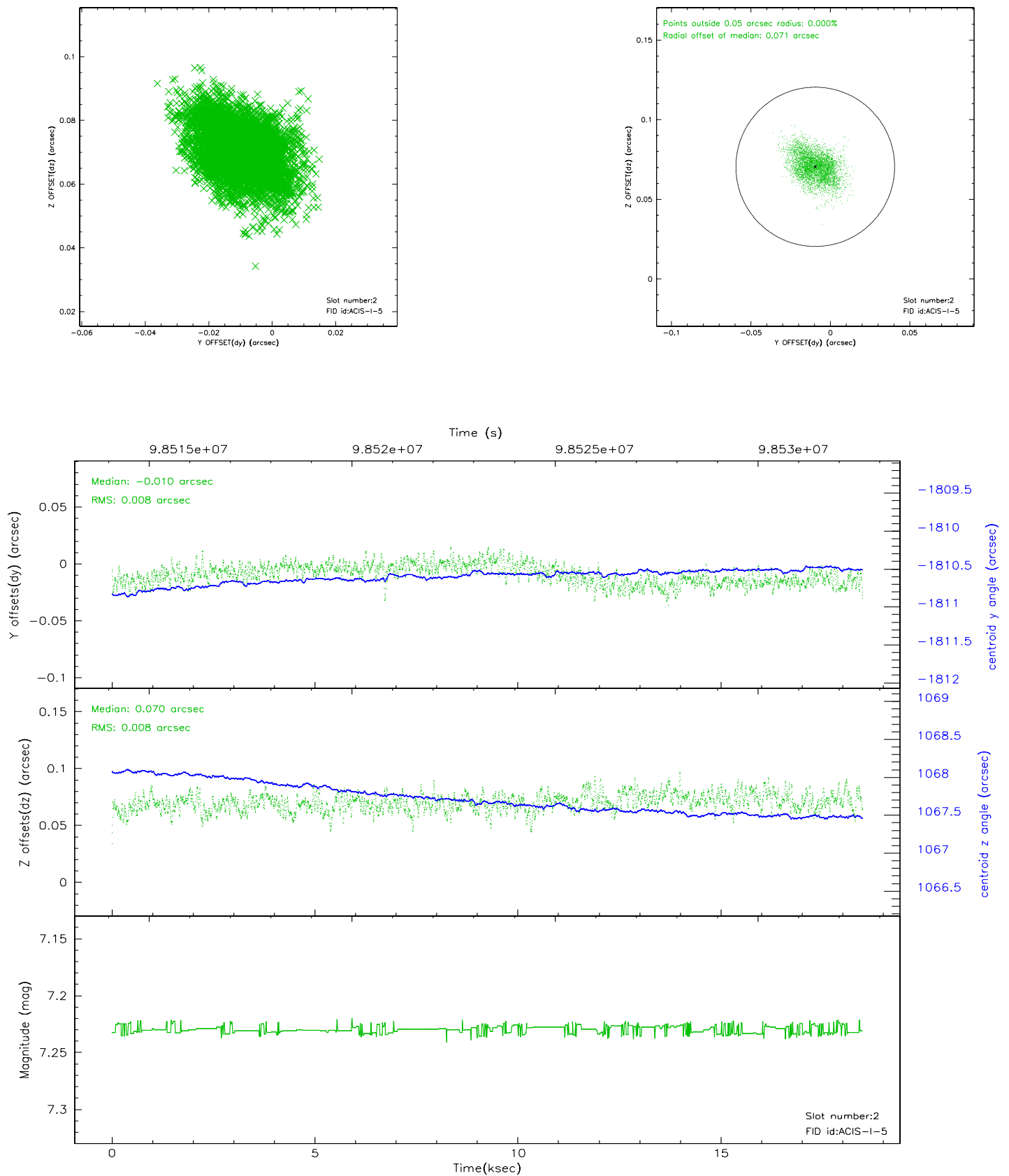
2.5.1 Slot 0



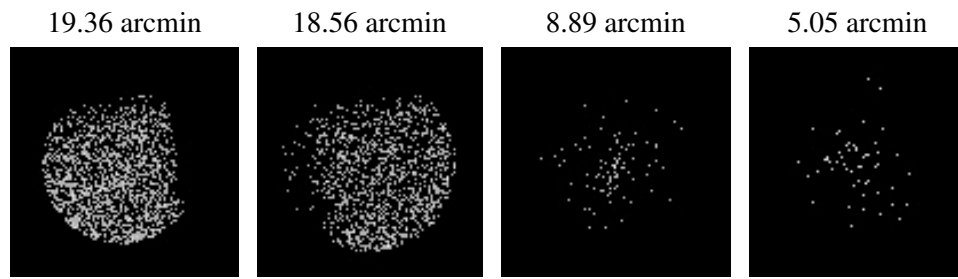
2.5.2 Slot 1



2.5.3 Slot 2



3 Point Sources



A Summary

A.1 Status

V&V Scientist	Jen Lauer
V&V Date (YYYY-MM-DD)	2006.11.09
V&V Edition	1
V&V Disposition and Status	OK
V&V Charge Time	17.955

A.2 Comments