

V&V Reference Report

L2 ASCDS Version : 7.6.9

Observation 1041 - L2 Version 001
Chandra X-Ray Center

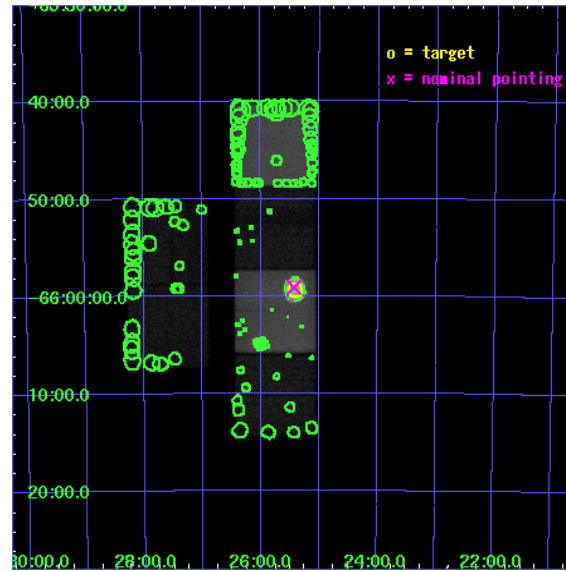
L2 Processing Date : Dec 31 2006

Contents

1	Front	2
2	OBI	3
2.1	OBI	3
2.1.1	Images	3
2.1.2	Bias	3
2.1.3	Parameters	4
2.1.4	Events	4
2.2	Compared Parameters	5
2.3	Aspect	6
2.4	Star Slots	9
2.4.1	Slot 3	9
2.4.2	Slot 4	10
2.4.3	Slot 5	11
2.4.4	Slot 6	12
2.4.5	Slot 7	13
2.5	FID Slots	14
2.5.1	Slot 0	14
2.5.2	Slot 1	15
2.5.3	Slot 2	16
3	Point Sources	17
A	Summary	18
A.1	Status	18
A.2	Comments	18

1 Front

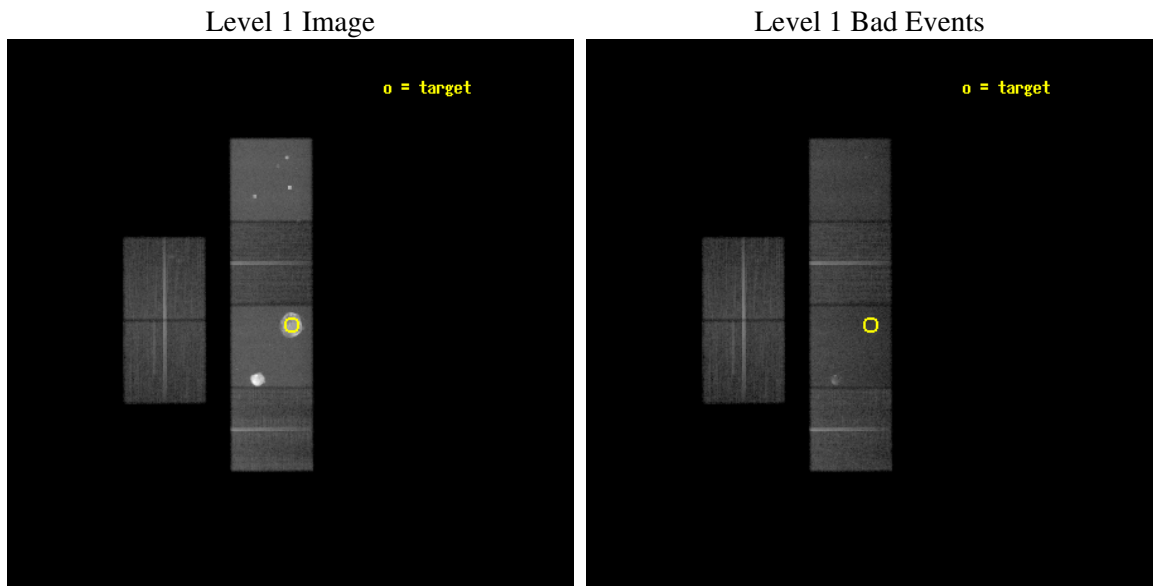
seq_num	500107
obs_id	1041
title	OBSERVATION OF SNR N49B
observer	Professor Gordon Garmire
object	N49B
dtcycle	0
cycle	P
ra_targ	81.354167
dec_targ	-65.989444
ra_nom	81.358393812198
dec_nom	-65.985374824613
roll_nom	89.798948482421
revision	2
ontime	34297.559071705
livetime	33863.262727228
ontime2	34300.800031945
ontime3	34300.800031945
ontime5	34300.800031945
ontime6	34300.800031945
ontime7	34297.559071705
ontime8	34300.800031945
l2events	949768



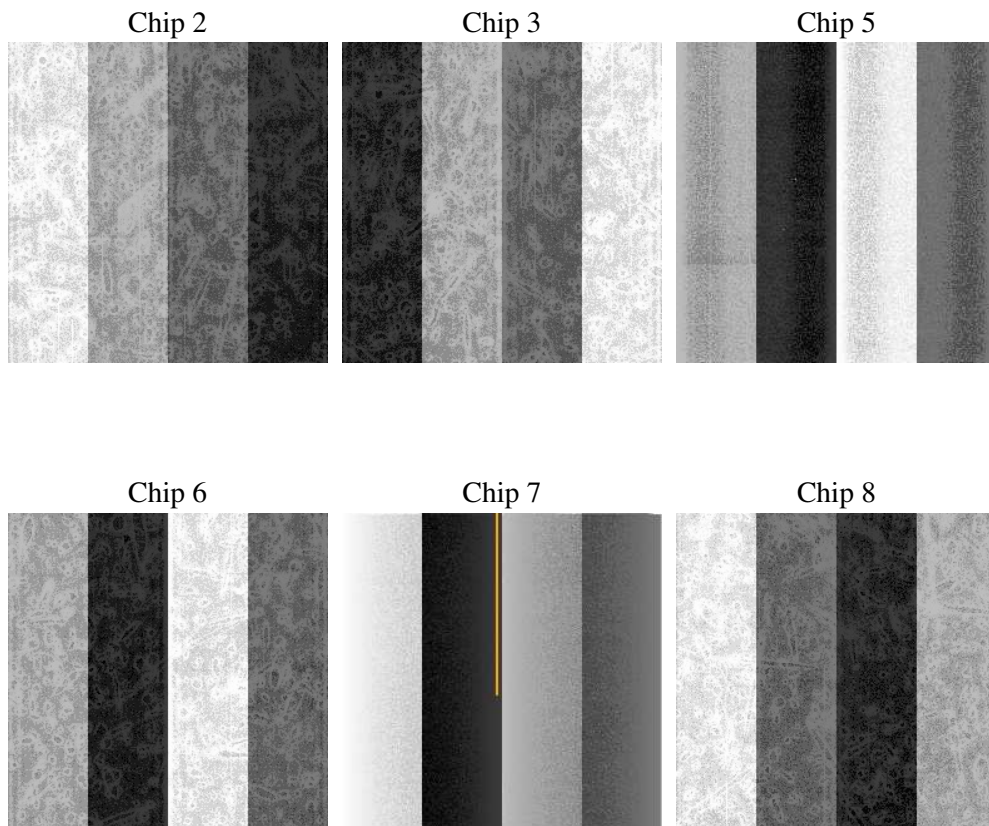
2 OBI

2.1 OBI

2.1.1 Images



2.1.2 Bias



2.1.3 Parameters

obi_num	0
ascdsver	7.6.9
caldsver	3.2.4
date	2006-12-31T12:08:11
revision	2

sched_exp_time	34352.599000
ontime	34302.732976228
ontime2	34305.97396639
ontime3	34305.973936468
ontime5	34305.97396639
ontime6	34305.97396639
ontime7	34302.732976228
ontime8	34305.973936468
l1events	2231533

2.1.4 Events

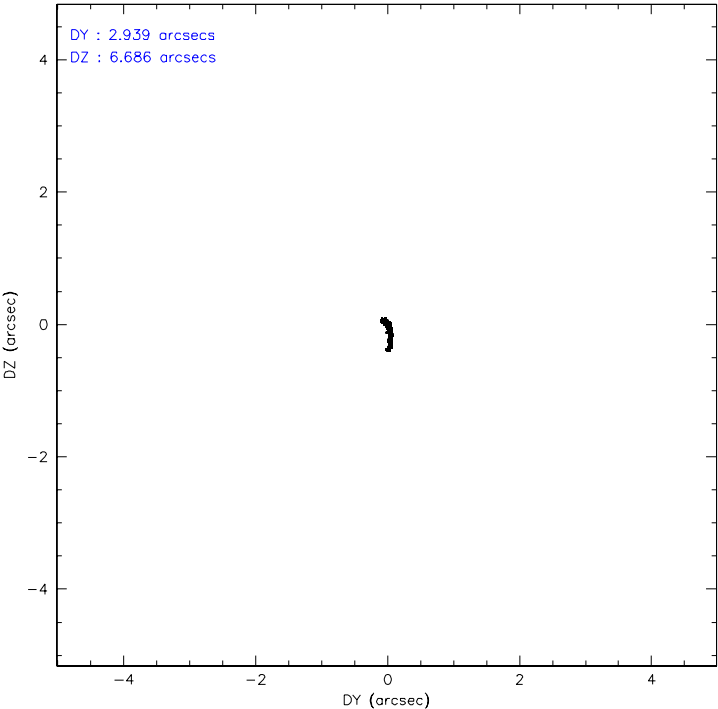
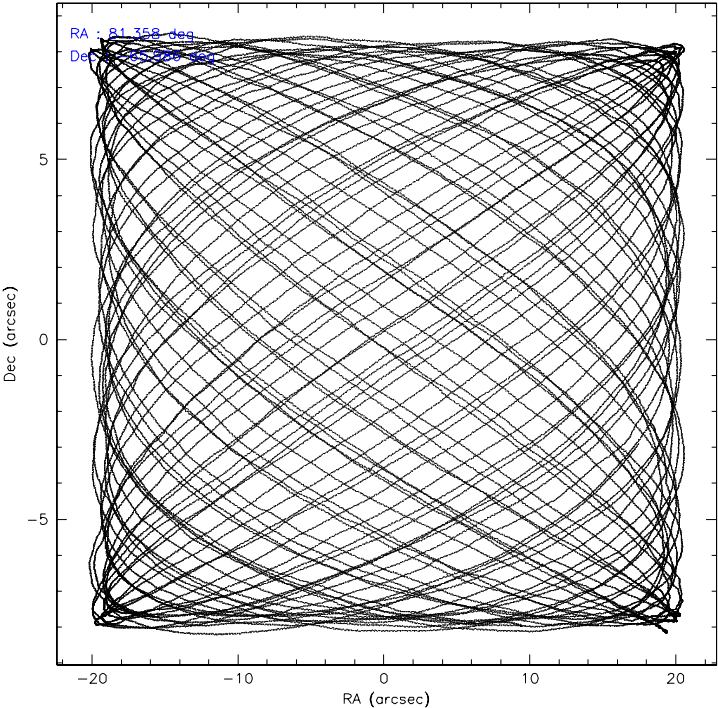
	ccd 2	ccd 3	ccd 5	ccd 6	ccd 7	ccd 8
level 1 events	238716	227248	423236	241811	798943	301579
rejected events	204070	193992	187660	203749	189731	224774
rejected %	85%	85%	44%	84%	23%	74%

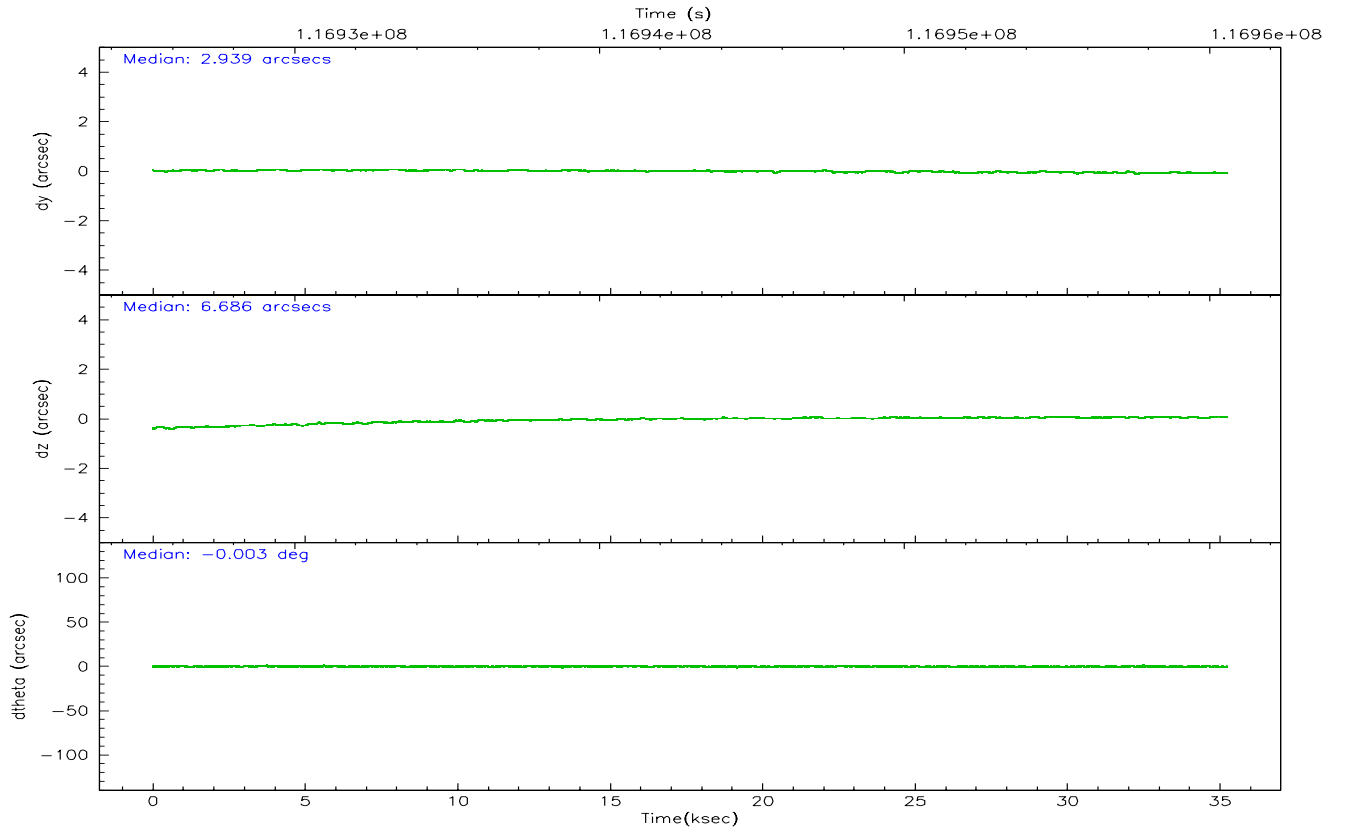
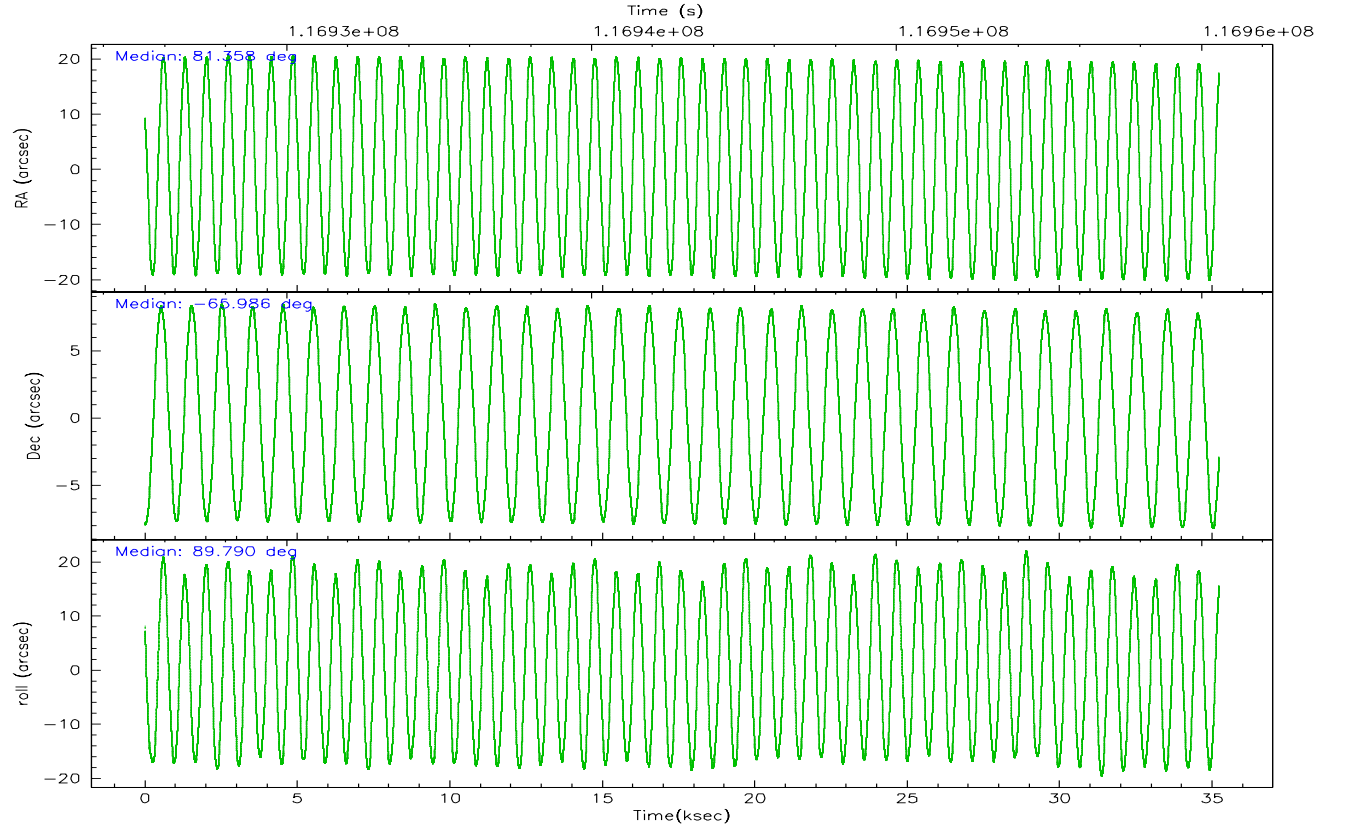
	ccd 2	ccd 3	ccd 5	ccd 6	ccd 7	ccd 8
grade 0 events	17797	16767	35423	20180	149040	29811
	7%	7%	8%	8%	18%	9%
grade 1 events	116	129	497	131	638	208
	0%	0%	0%	0%	0%	0%
grade 2 events	6678	6373	70254	6851	164715	14955
	2%	2%	16%	2%	20%	4%
grade 3 events	2654	2620	7006	2848	59361	7716
	1%	1%	1%	1%	7%	2%
grade 4 events	2610	2699	6752	2777	58031	7191
	1%	1%	1%	1%	7%	2%
grade 5 events	7713	8615	16072	9359	23538	11744
	3%	3%	3%	3%	2%	3%
grade 6 events	4977	4857	116259	5537	178256	17256
	2%	2%	27%	2%	22%	5%
grade 7 events	196171	185188	170973	194128	165364	212698
	82%	81%	40%	80%	20%	70%

2.2 Compared Parameters

Parameter	Planned	Actual	Parameter	Planned	Actual
Instrument	ACIS	ACIS	Obspar format version number	6	6
Detector	ACIS-235678	ACIS-235678	Obspar file type	PREDICTED	ACTUAL
Grating	NONE	NONE	Obspar update status	NONE	UPDATED
Data mode	FAINT	FAINT	Number of optional ACIS chips dropped	0	0
Observation mode	POINTING	POINTING	On-chip summing requested	N	N
Pointing RA	81.392407	81.35839381219833	Subarray requested	NONE	NONE
Pointing Dec	-66.008855	-65.98537482461323	Alternating exposures requested	N	N
Pointing Roll	89.673389	89.79894848242147	Primary exposure time	0.000000	3.2
SIM focus pos (mm)	-0.684267	-0.6828225247311905			
SIM defocus (mm)	0	0.001444936568705701			
SIM translation stage pos (mm)	-184.272523	-184.2716541360309			
SIM translation stage offset (mm)	-5.86	-5.860868446976951			
Observation start time	116926235.184000	116924930.10347			
Observation start date	2001-09-15T07:29:31	2001-09-15T07:08:50			
Observation end time	116960587.184000	116960901.96739			
Observation end date	2001-09-15T17:02:03	2001-09-15T17:08:21			
Read mode	TIMED	TIMED			

2.3 Aspect



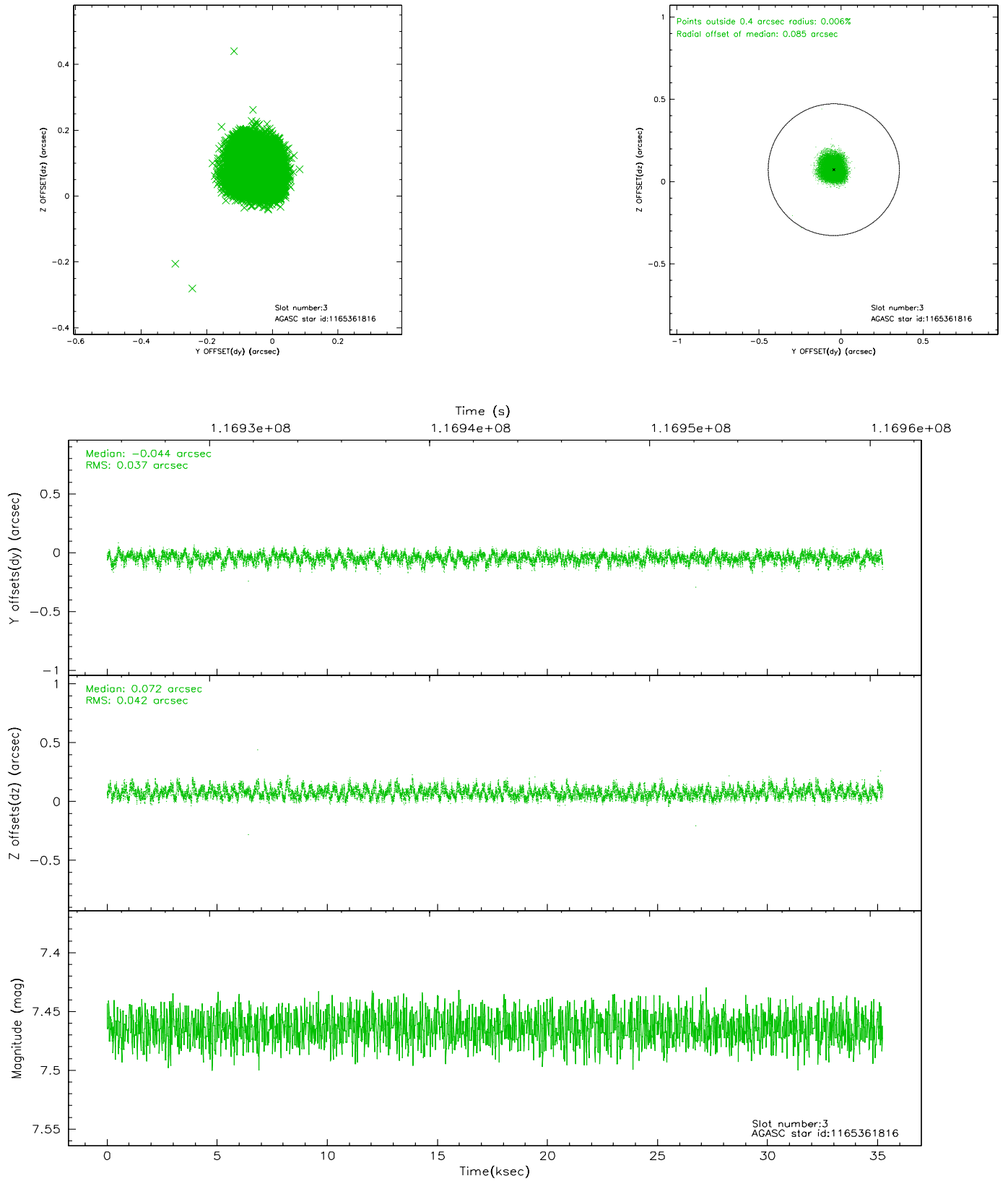


Slot Statistics

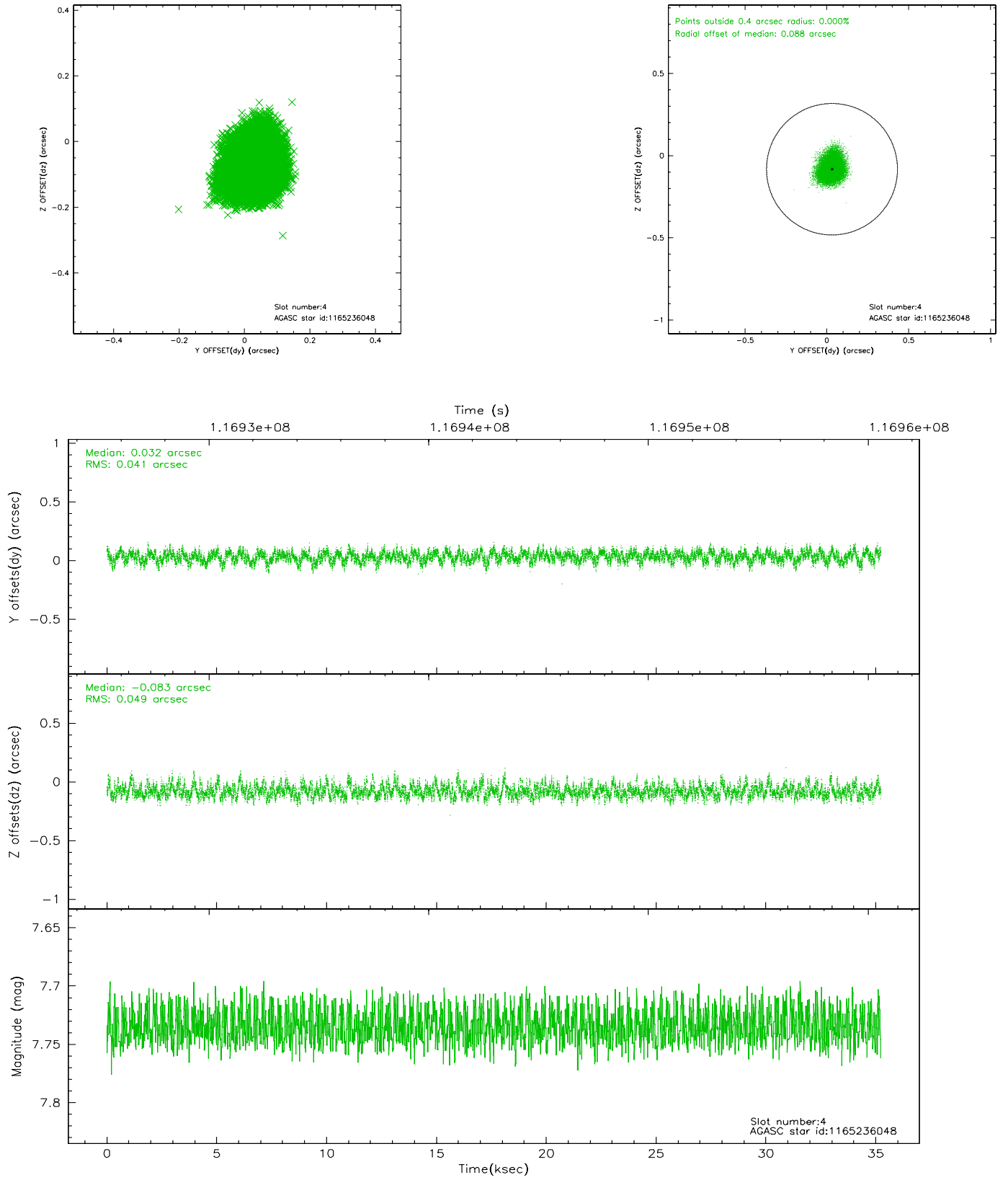
slot	status	id	mag	n_pts	med_dy	med_dz	dr1	dr2	ra	dec	mean_y	mean_z
0	FID	ACIS-S-2	7.08	8594	-0.016	-0.090	0.009	0.014	0.000000	0.000000	-755.20	-1848.68
1	FID	ACIS-S-4	7.19	8594	-0.072	0.032	0.006	0.011	0.000000	0.000000	2158.02	59.82
2	FID	ACIS-S-5	7.23	8594	0.057	0.066	0.007	0.012	0.000000	0.000000	-1807.90	53.62
3	GUIDE	1165361816	7.46	17186	-0.044	0.072	0.060	0.095	81.473501	-65.742228	961.07	-114.32
4	GUIDE	1165236048	7.73	17184	0.032	-0.083	0.068	0.110	80.001541	-66.057801	-209.79	2030.50
5	GUIDE	1165235856	8.26	17181	0.041	-0.013	0.070	0.115	79.957487	-66.443092	-1598.31	2055.14
6	GUIDE	1165237552	9.65	17181	-0.009	0.027	0.117	0.194	80.257142	-65.800667	725.09	1679.58
7	GUIDE	1165237040	10.03	17003	-0.009	-0.007	0.180	0.291	80.427842	-65.641485	1303.86	1439.94

2.4 Star Slots

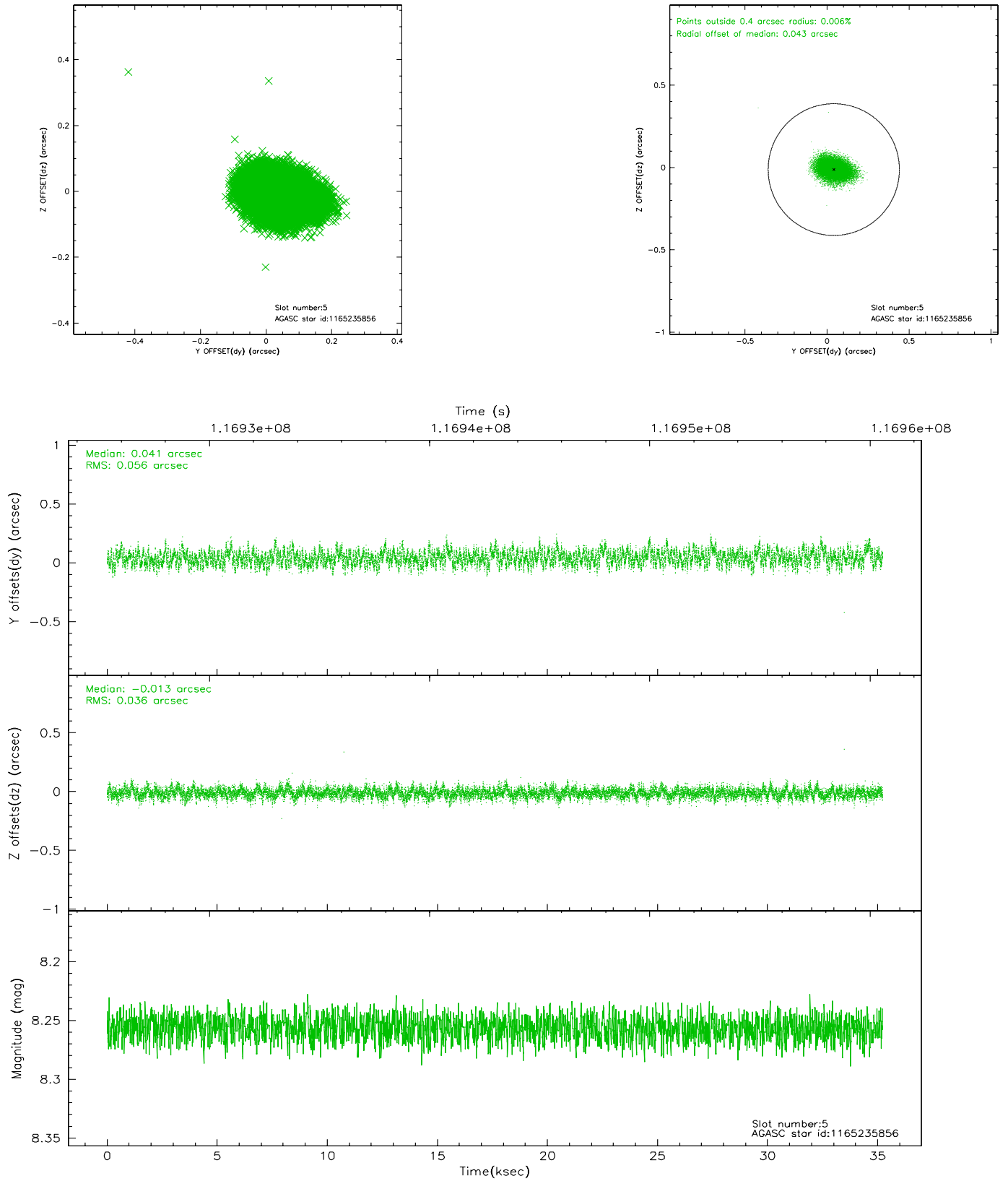
2.4.1 Slot 3



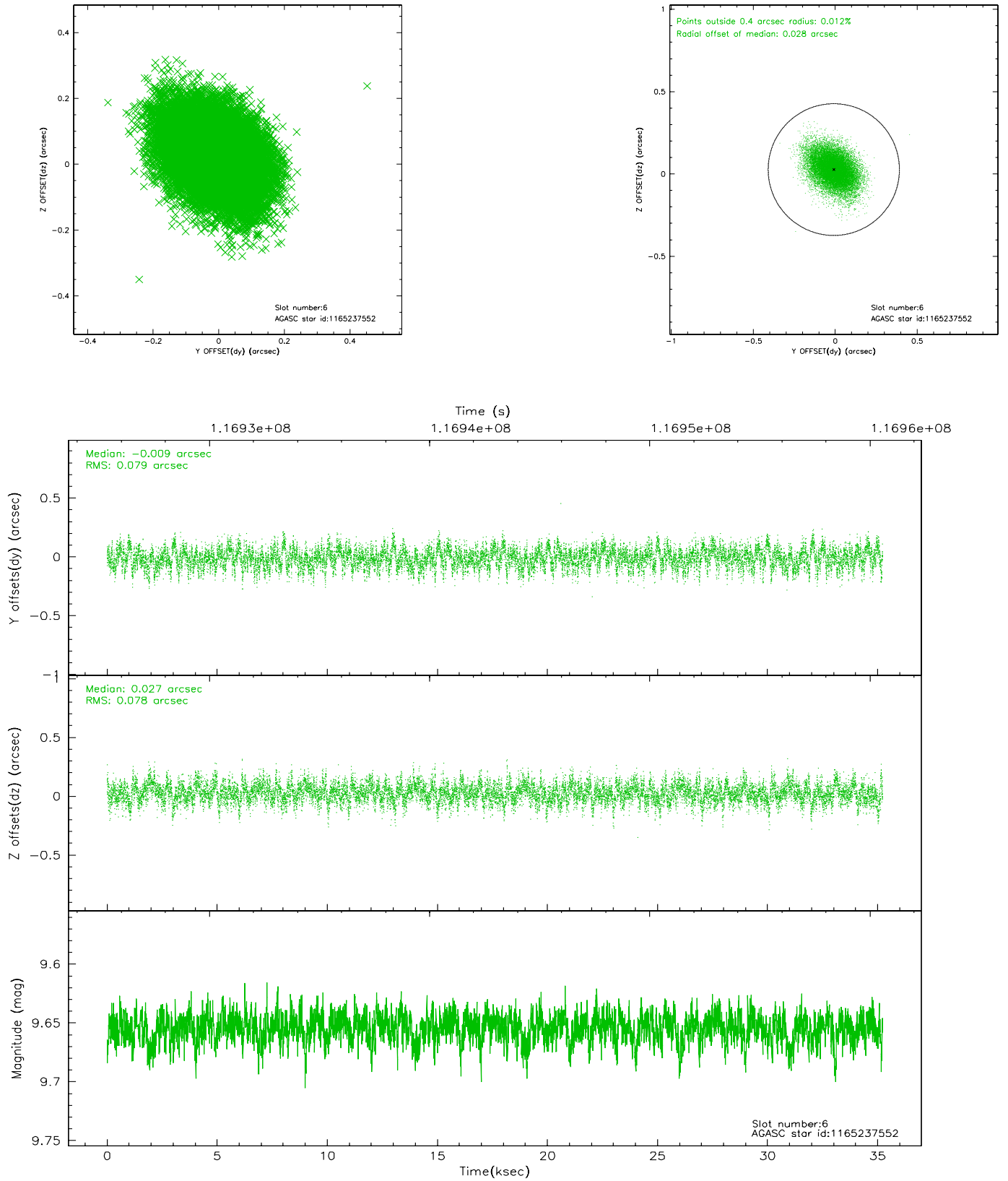
2.4.2 Slot 4



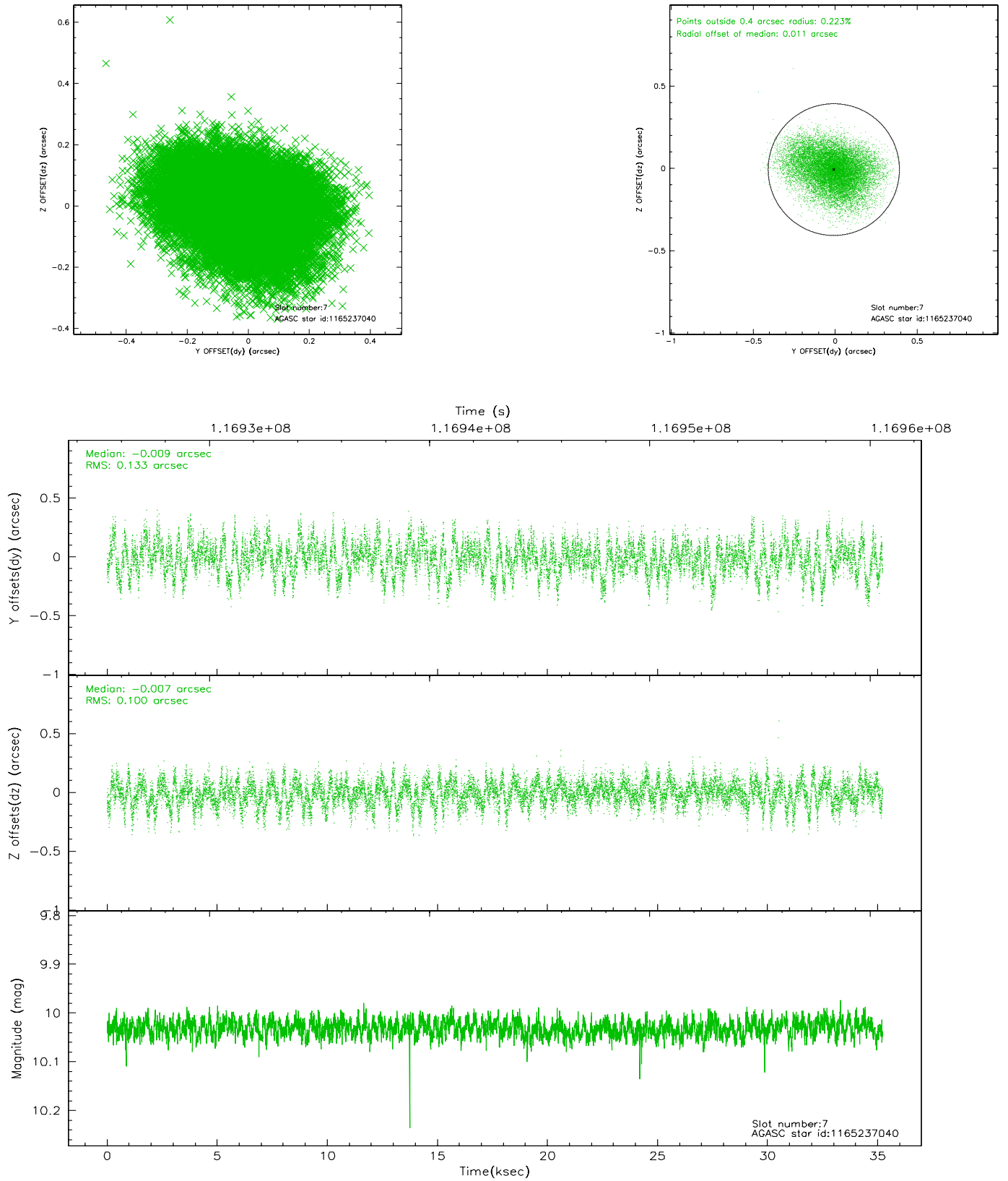
2.4.3 Slot 5



2.4.4 Slot 6

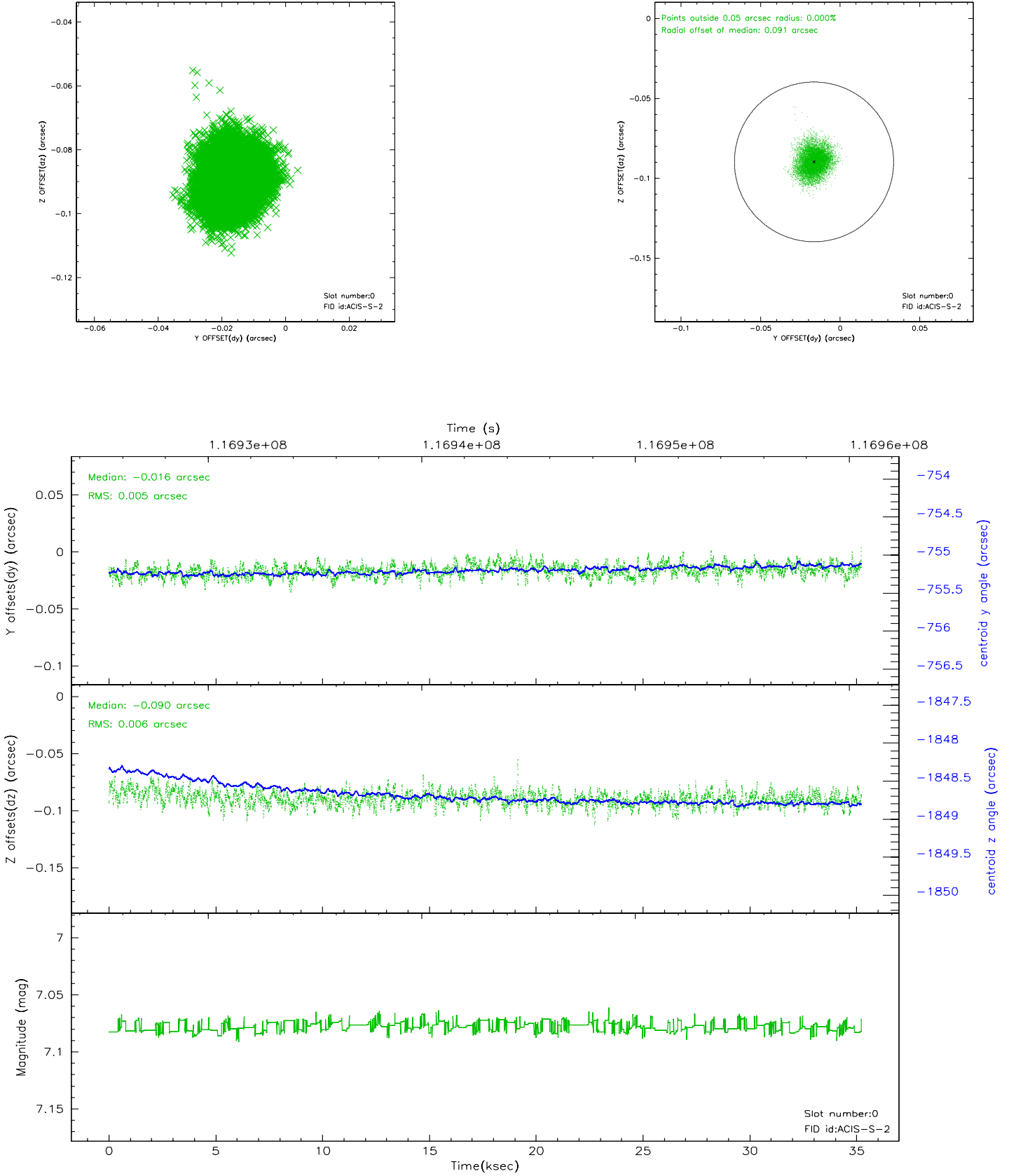


2.4.5 Slot 7

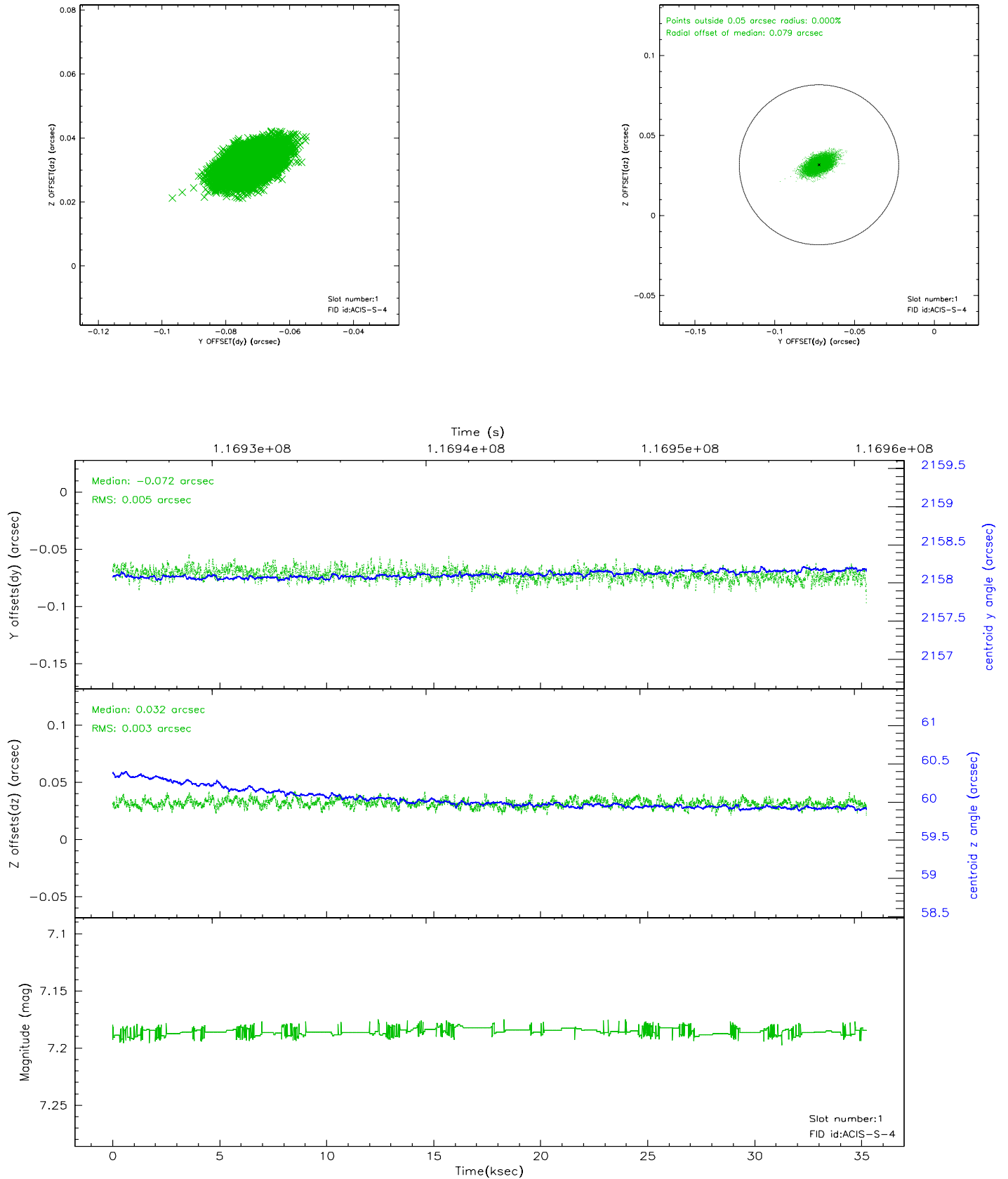


2.5 FID Slots

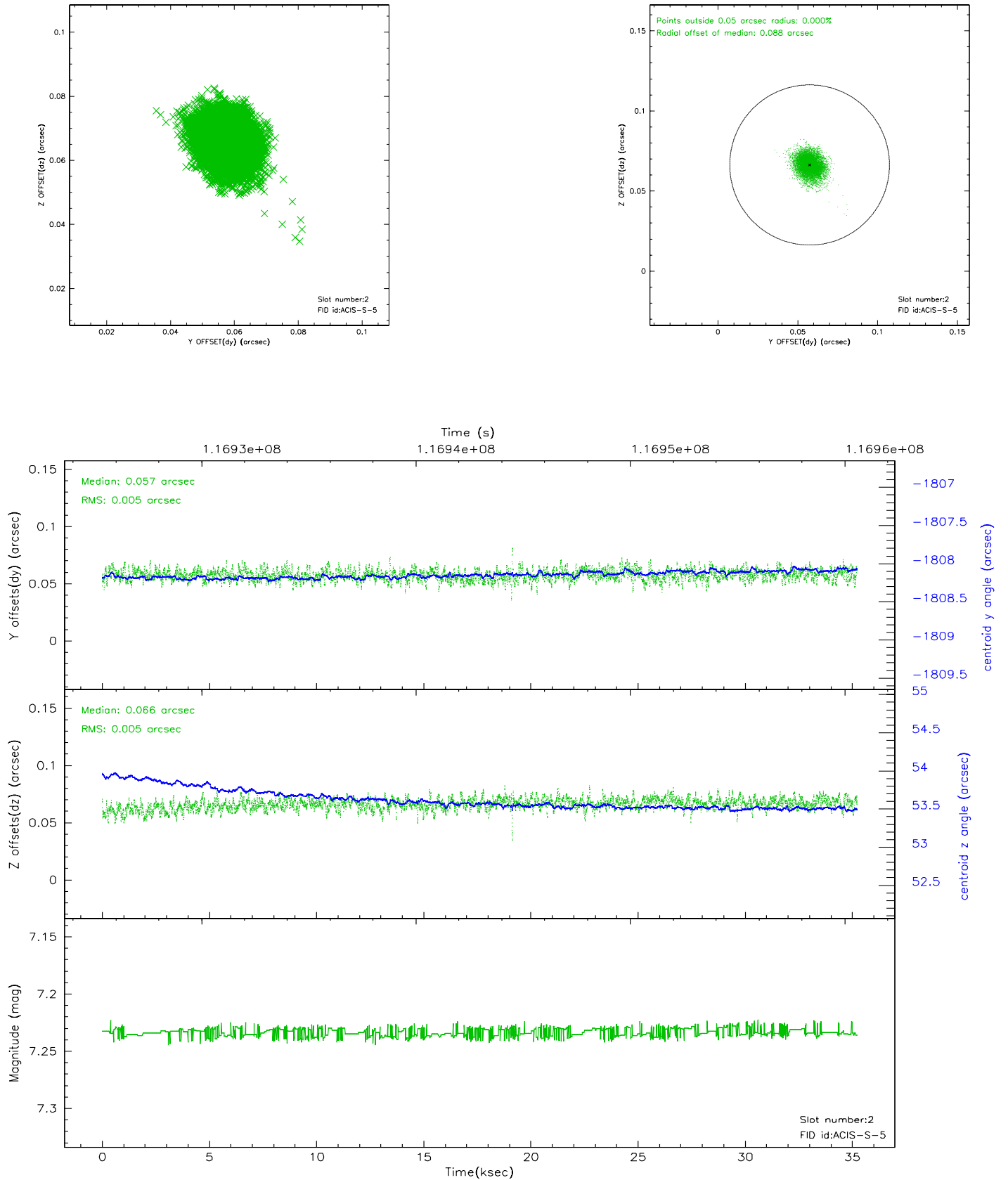
2.5.1 Slot 0



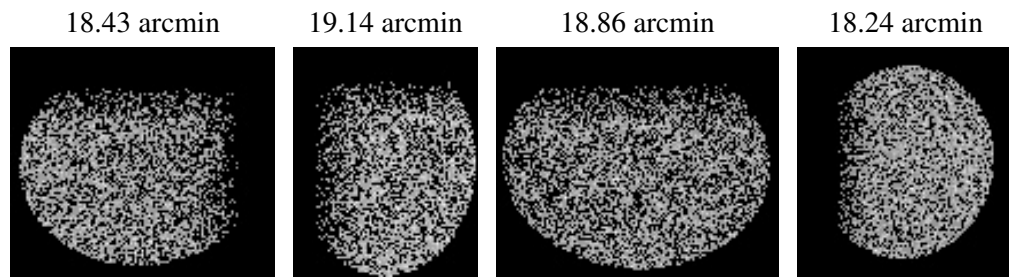
2.5.2 Slot 1



2.5.3 Slot 2



3 Point Sources



A Summary

A.1 Status

V&V Scientist	Beth Sundheim
V&V Date (YYYY-MM-DD)	2007.01.04
V&V Edition	1
V&V Disposition and Status	OK
V&V Charge Time	34.3

A.2 Comments