

# V&V Reference Report

## L2 ASCDS Version : 7.6.9

Observation 1040 - L2 Version 001  
Chandra X-Ray Center

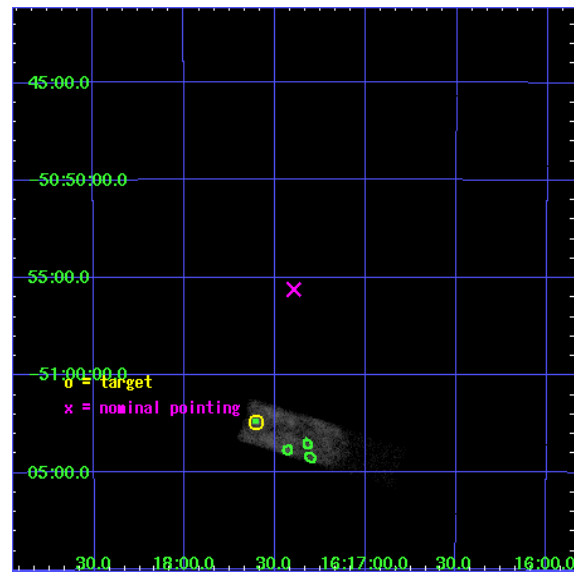
L2 Processing Date : Nov 2 2006

## Contents

<b>1</b>	<b>Front</b>	<b>2</b>
<b>2</b>	<b>OBI</b>	<b>3</b>
2.1	OBI . . . . .	3
2.1.1	Images . . . . .	3
2.1.2	Bias . . . . .	3
2.1.3	Parameters . . . . .	4
2.1.4	Events . . . . .	4
2.2	Compared Parameters . . . . .	5
2.3	Aspect . . . . .	6
2.4	Star Slots . . . . .	9
2.4.1	Slot 3 . . . . .	9
2.4.2	Slot 4 . . . . .	10
2.4.3	Slot 5 . . . . .	11
2.4.4	Slot 6 . . . . .	12
2.4.5	Slot 7 . . . . .	13
2.5	FID Slots . . . . .	14
2.5.1	Slot 0 . . . . .	14
2.5.2	Slot 1 . . . . .	15
2.5.3	Slot 2 . . . . .	16
<b>3</b>	<b>Point Sources</b>	<b>17</b>
<b>A</b>	<b>Summary</b>	<b>18</b>
A.1	Status . . . . .	18
A.2	Comments . . . . .	18

# 1 Front

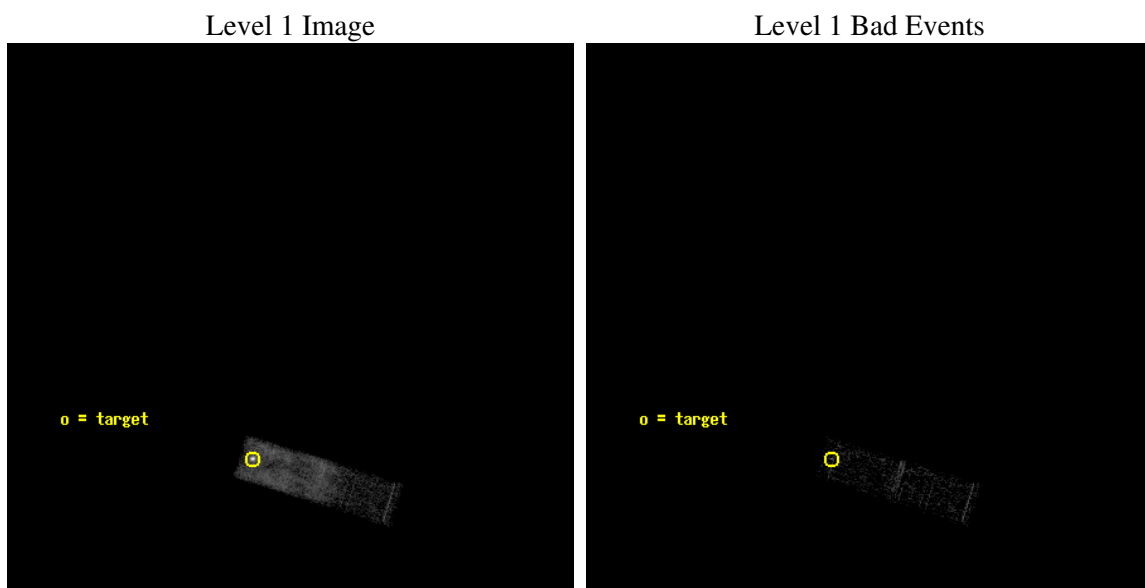
seq_num	500106
obs_id	1040
title	OBSERVATION OF SNR RCW103
observer	Professor Gordon Garmire
object	RCW103
dtcycle	0
cycle	P
ra_targ	244.401292
dec_targ	-51.0402
ra_nom	244.34903712317
dec_nom	-50.927110984501
roll_nom	107.28201443375
revision	2
ontime	3867.1589654982
livetime	3678.4542618646
ontime3	3867.1589654982
l2events	20153



## 2 OBI

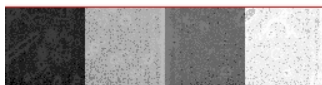
### 2.1 OBI

#### 2.1.1 Images



#### 2.1.2 Bias

Chip 3



### 2.1.3 Parameters

obi_num	0
ascdsver	7.6.9
caldbver	3.2.3
date	2006-11-02T20:19:13
revision	2

sched_exp_time	3500.000000
ontime	4317.8418658823
ontime3	4317.8418658823
l1events	29511

### 2.1.4 Events

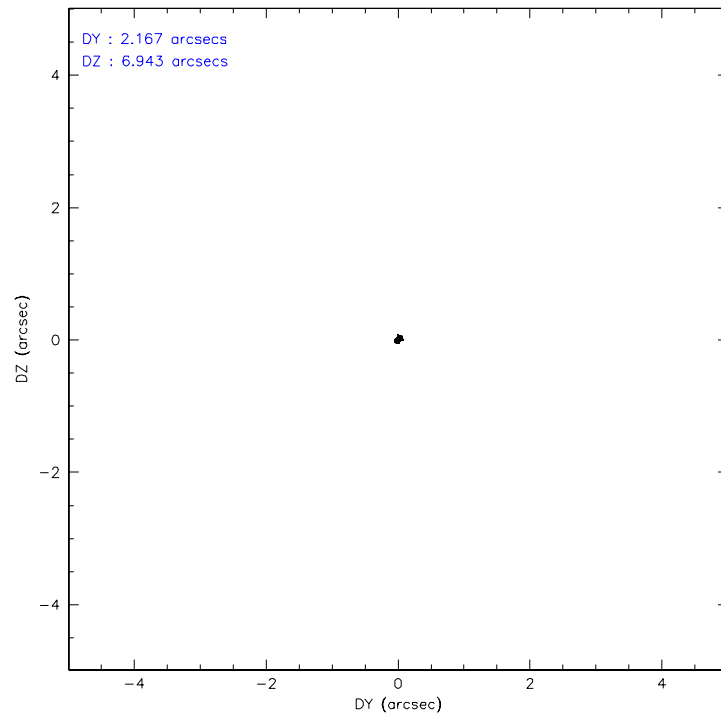
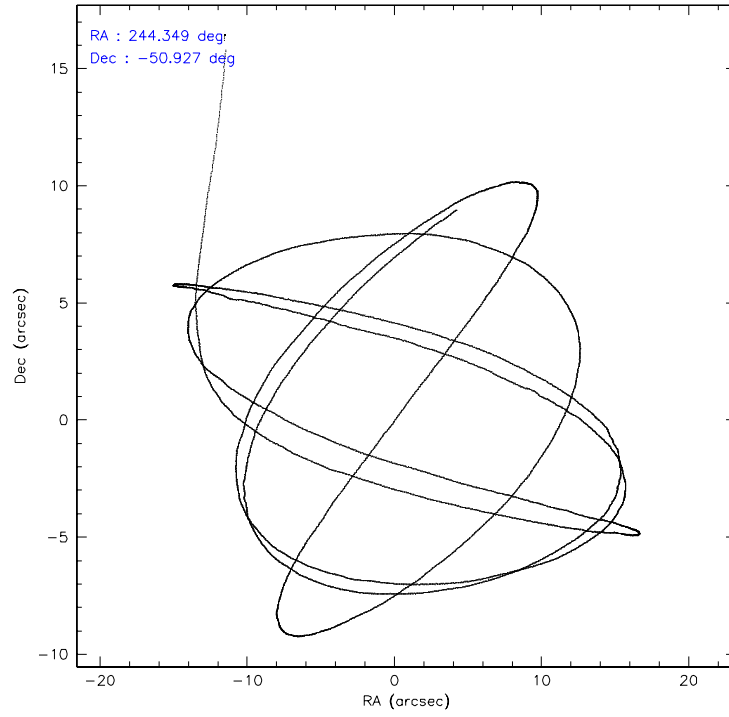
	<b>ccd 3</b>
level 1 events	29511
rejected events	8892
rejected %	30%

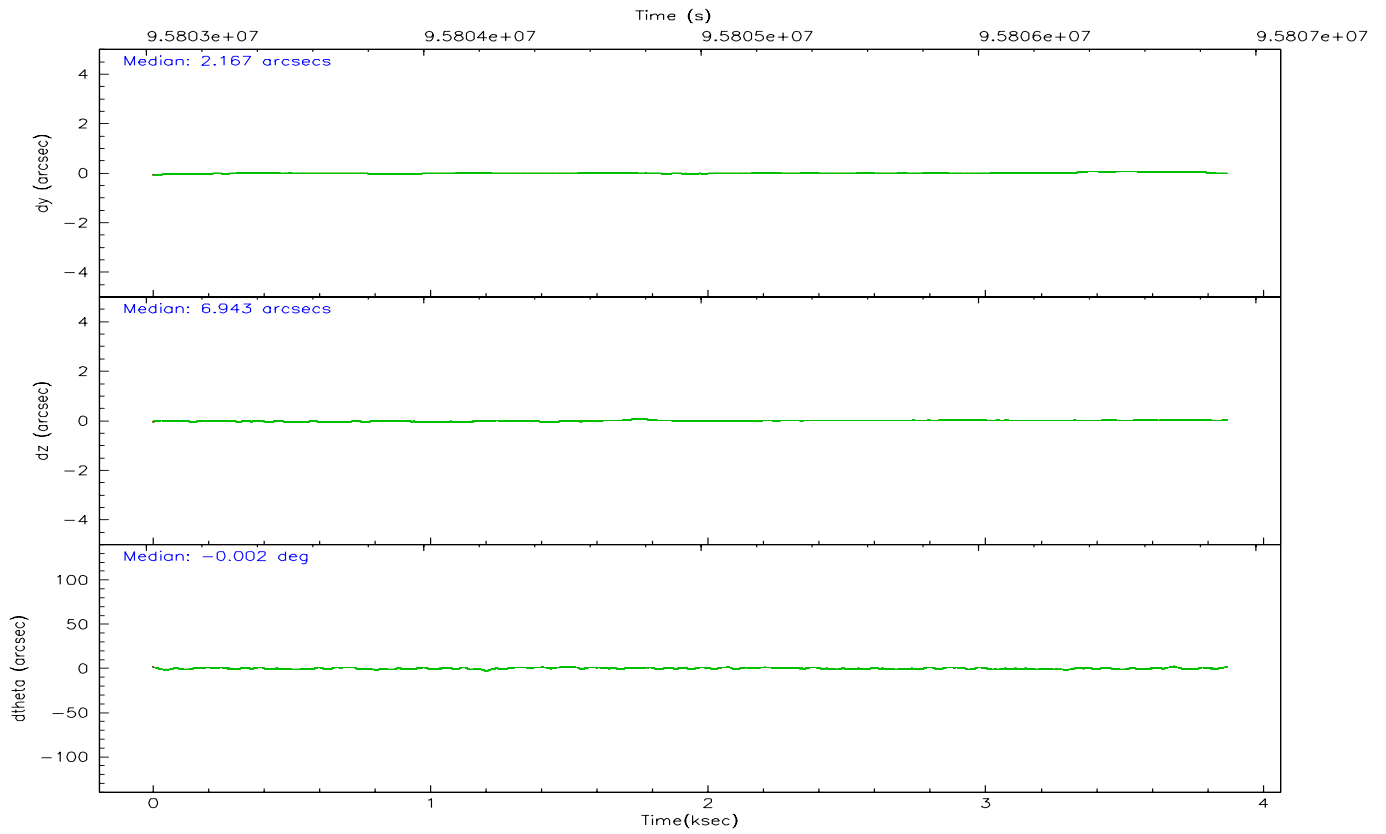
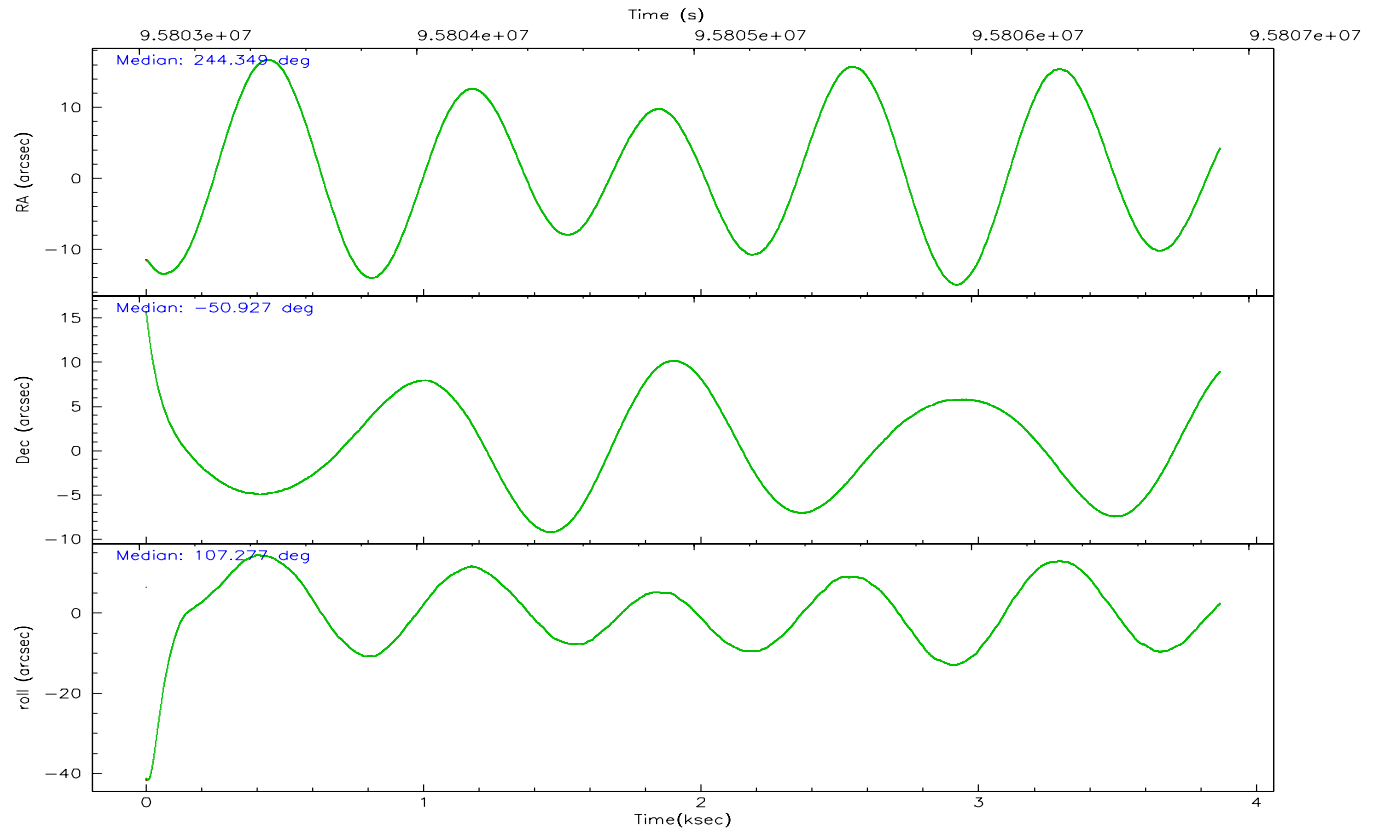
	<b>ccd 3</b>
grade 0 events	17713
	60%
grade 1 events	58
	0%
grade 2 events	2023
	6%
grade 3 events	735
	2%
grade 4 events	712
	2%
grade 5 events	263
	0%
grade 6 events	452
	1%
grade 7 events	7555
	25%

## 2.2 Compared Parameters

Parameter	Planned	Actual	Parameter	Planned	Actual
Instrument	ACIS	ACIS	Obspar format version number	6	6
Detector	ACIS-3	ACIS-3	Obspar file type	PREDICTED	ACTUAL
Grating	NONE	NONE	Obspar update status	NONE	UPDATED
Data mode	VFAINT	VFAINT	Number of optional ACIS chips dropped	0	0
Observation mode	POINTING	POINTING	On-chip summing requested	N	N
Pointing RA	244.381152	244.3490371231651	Subarray requested	CUSTOM	1/4
Pointing Dec	-50.945751	-50.92711098450139	Subarray start row	1	1
Pointing Roll	107.098445	107.2820144337454	Subarray row count	256	256
Window start time	95472064.184000	95472064.184000	Alternating exposures requested	N	N
Window stop time	97200064.184000	97200064.184000	Primary exposure time	0.000000	0.8
SIM focus pos (mm)	-0.782348	-0.7809083437167272			
SIM defocus (mm)	0	0.001439871863259334			
SIM translation stage pos (mm)	-233.592463	-233.5874344608287			
SIM translation stage offset (mm)	0	-0.005018542100998502			
Observation start time	95803394.184000	95802326.856261			
Observation start date	2001-01-13T20:02:10	2001-01-13T19:45:26			
Observation end time	95806894.184000	95807633.793965			
Observation end date	2001-01-13T21:00:30	2001-01-13T21:13:53			
Read mode	TIMED	TIMED			

## 2.3 Aspect





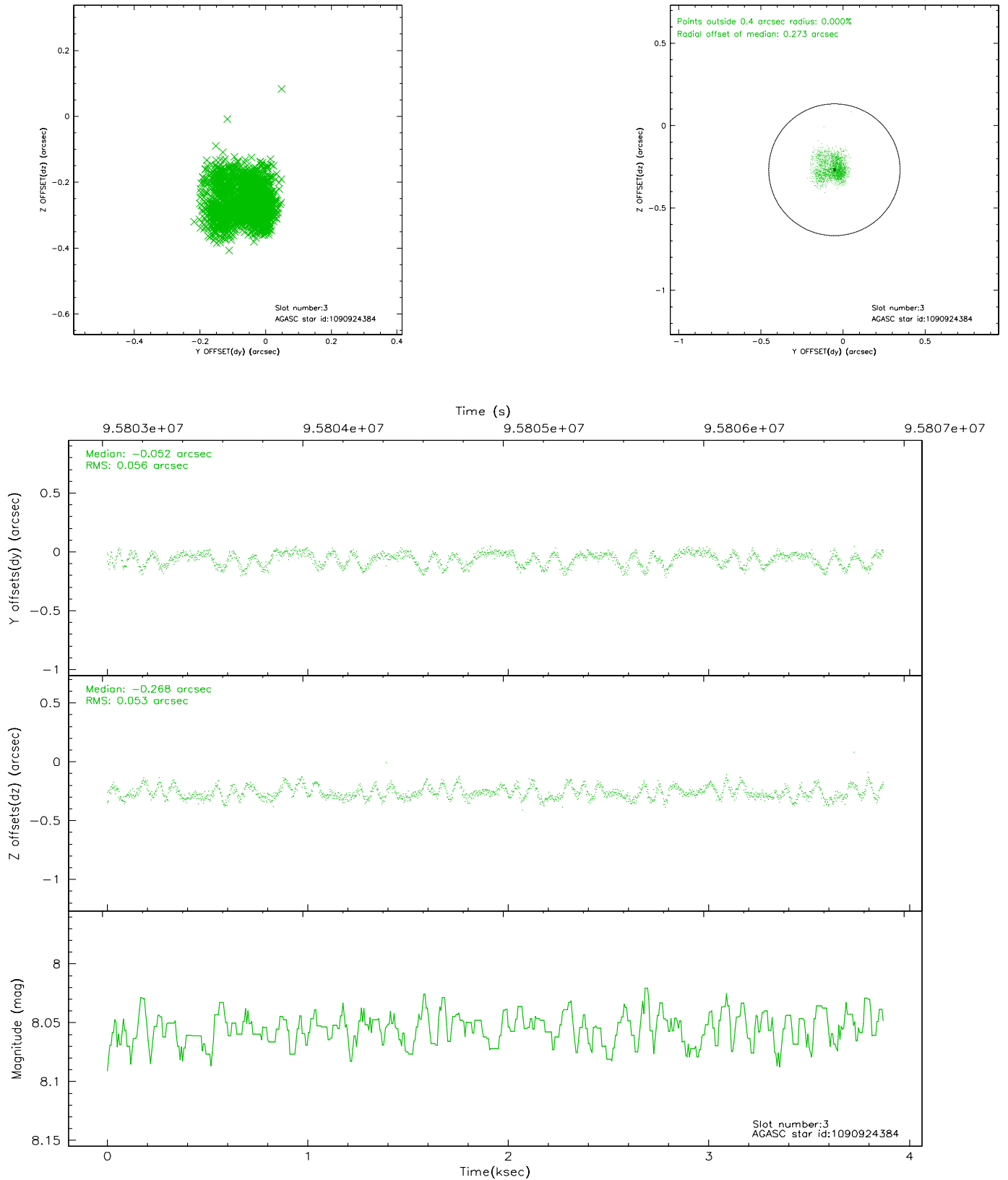
### Slot Statistics

slot	status	id	mag	n_pts	med_dy	med_dz	dr1	dr2	ra	dec	mean_y	mean_z
0	FID	ACIS-I-2	7.16	945	-0.036	-0.053	0.012	0.020	0.000000	0.000000	-756.56	-836.76
1	FID	ACIS-I-4	7.18	943	-0.060	0.043	0.008	0.013	0.000000	0.000000	2156.74	1068.71
2	FID	ACIS-I-5	7.23	944	-0.006	0.079	0.013	0.022	0.000000	0.000000	-1808.28	1068.43
3	GUIDE	1090924384	8.06	1887	-0.052	-0.268	0.083	0.134	243.330505	-50.934017	725.51	2269.70
4	GUIDE	1091059112	9.06	1887	-0.050	0.207	0.077	0.121	245.180420	-50.736664	175.88	-1958.47
5	GUIDE	1090922592	8.67	1889	-0.065	-0.053	0.066	0.103	243.541382	-50.784876	1105.36	1657.91
6	GUIDE	1090916640	8.91	1888	0.180	-0.022	0.054	0.092	244.322461	-51.464734	-1745.63	674.91
7	GUIDE	1090921280	9.09	1888	-0.004	0.133	0.061	0.099	244.365071	-50.638328	1068.46	-290.70

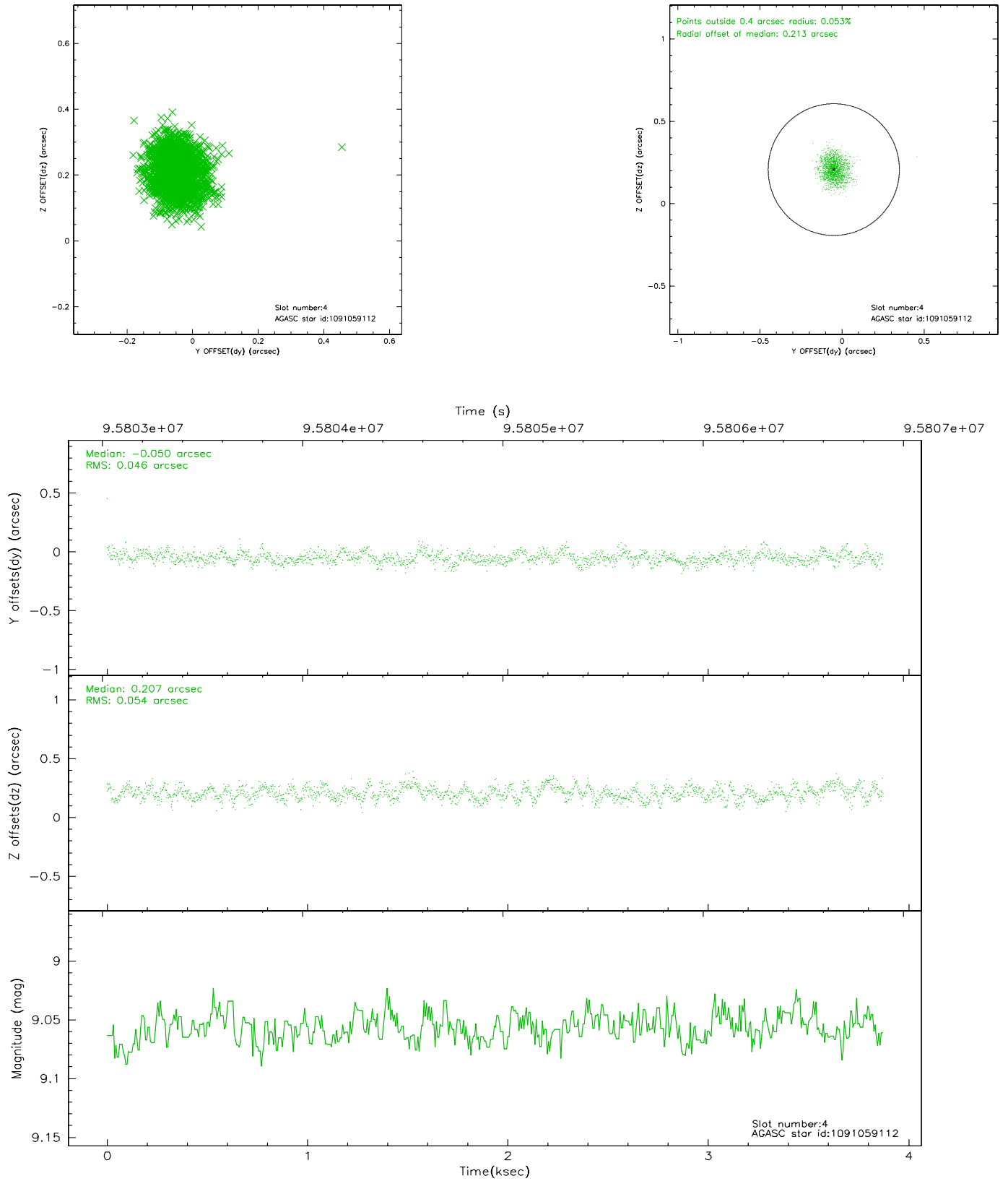


## 2.4 Star Slots

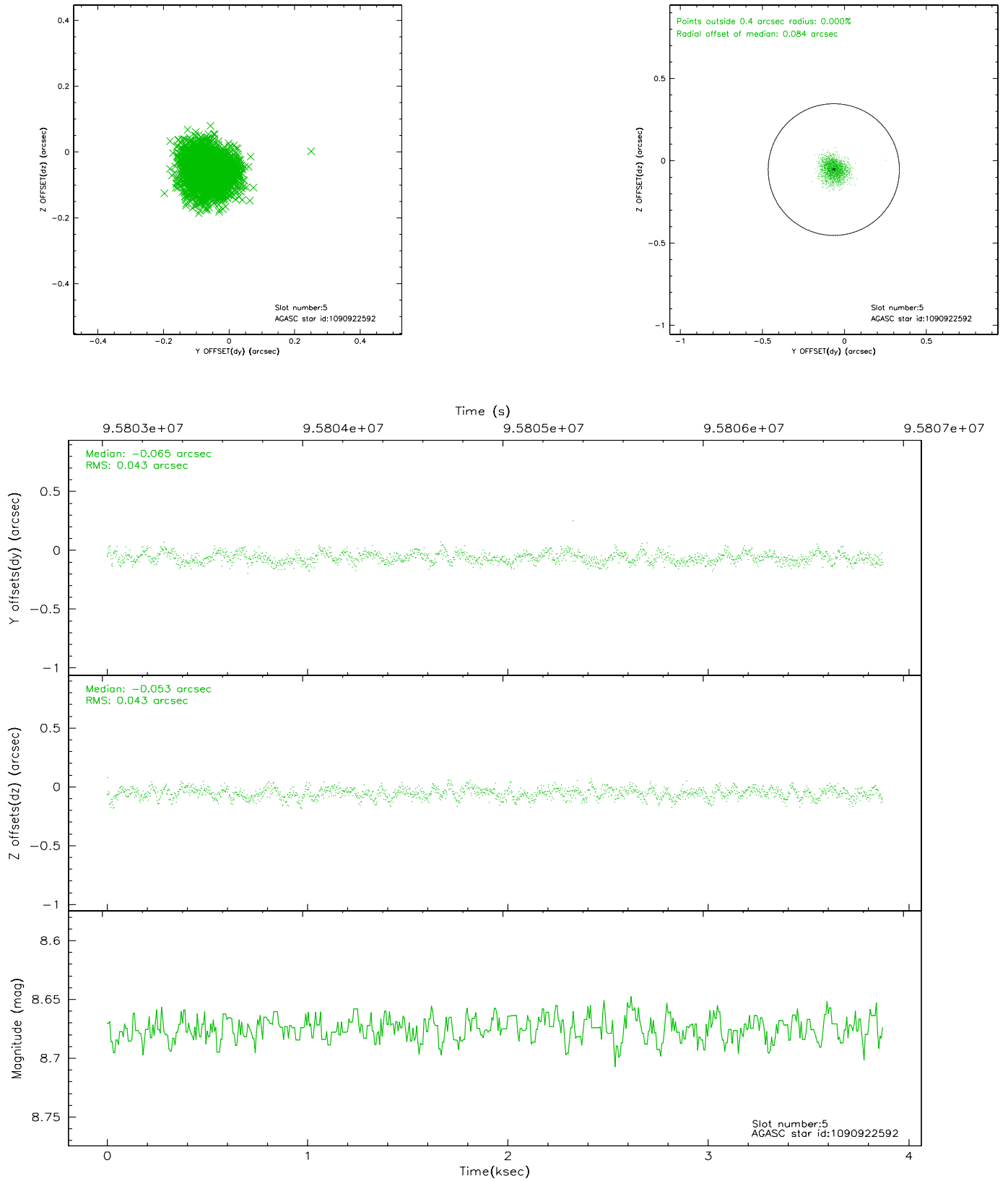
### 2.4.1 Slot 3



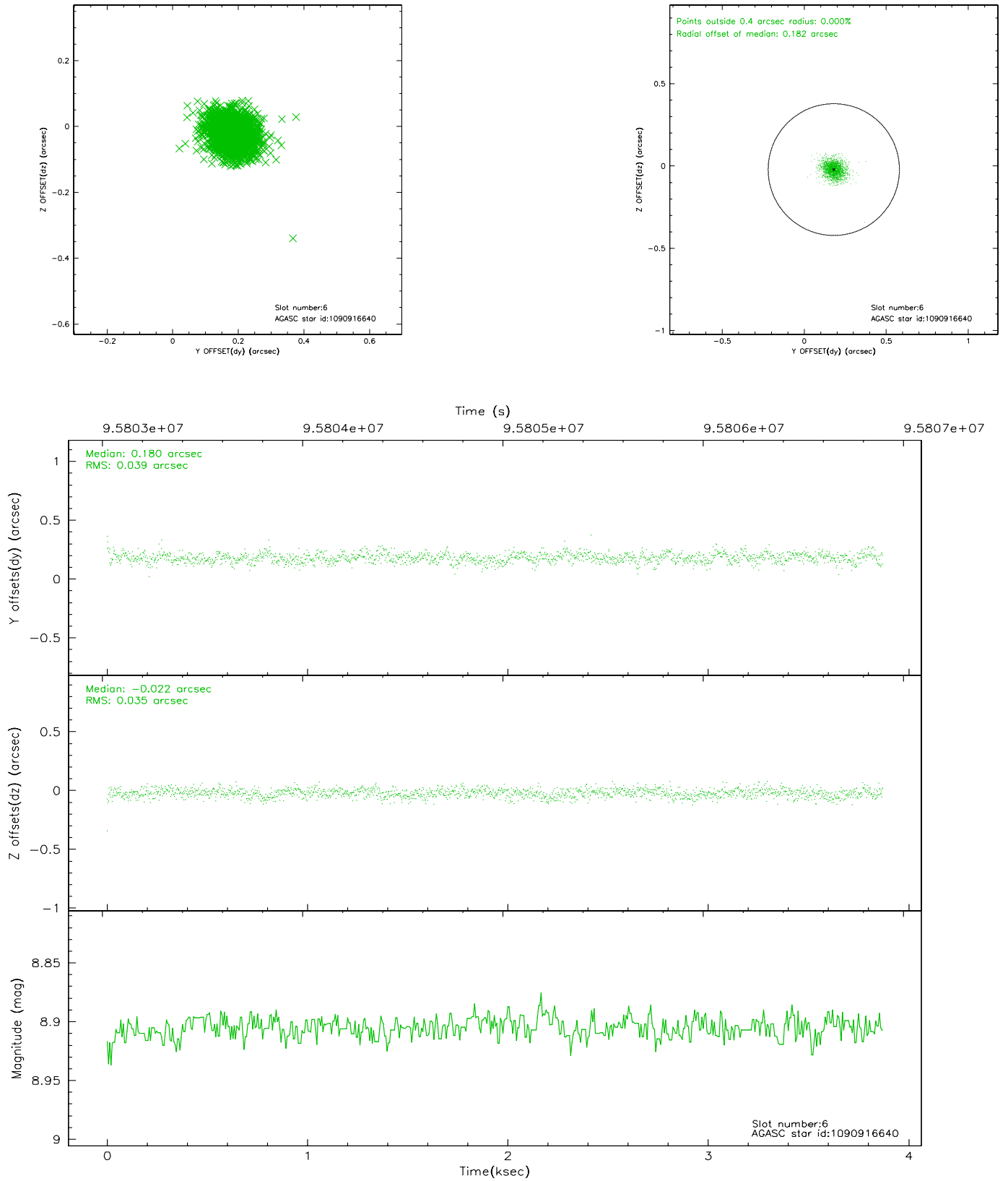
## 2.4.2 Slot 4



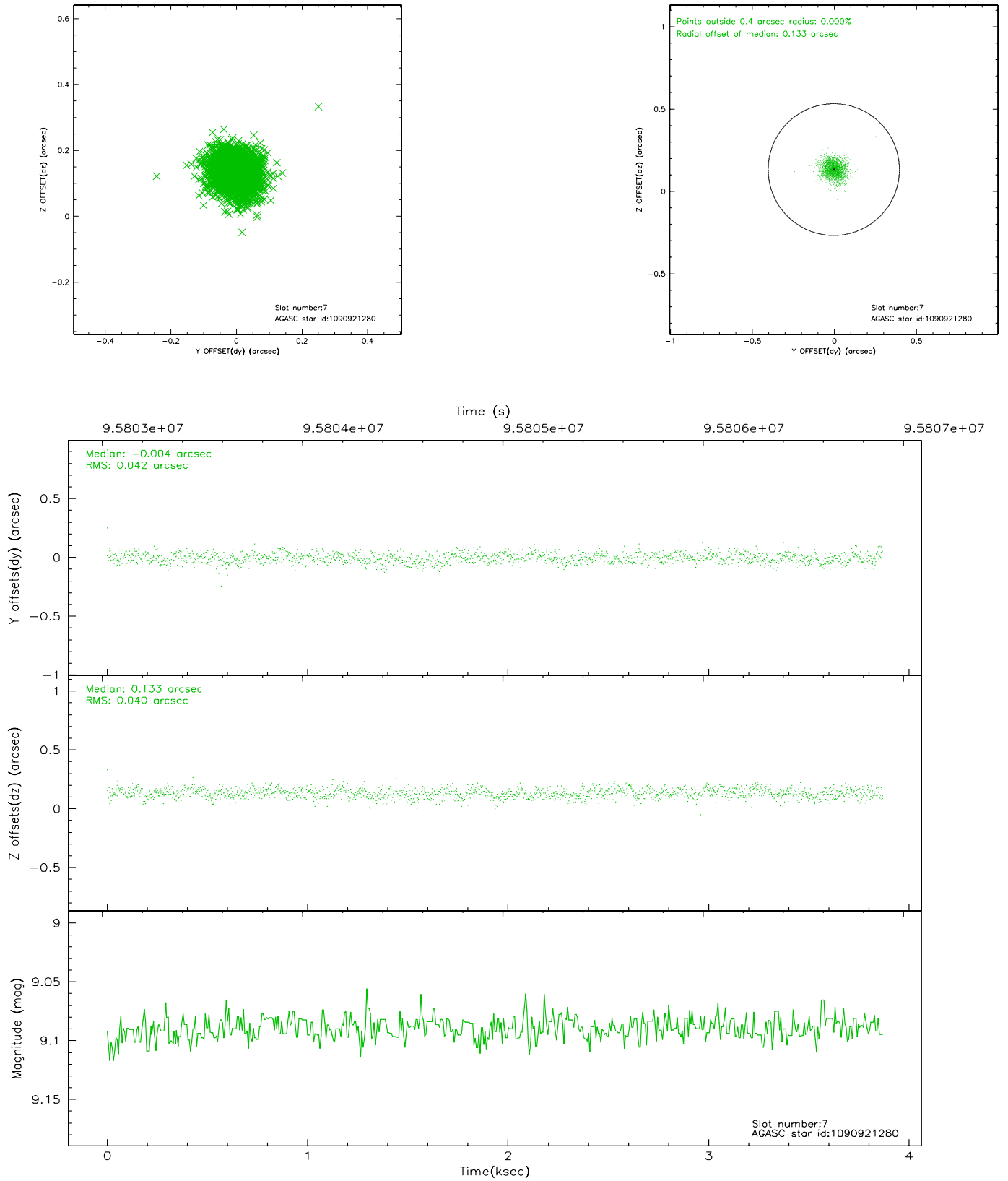
### 2.4.3 Slot 5



## 2.4.4 Slot 6

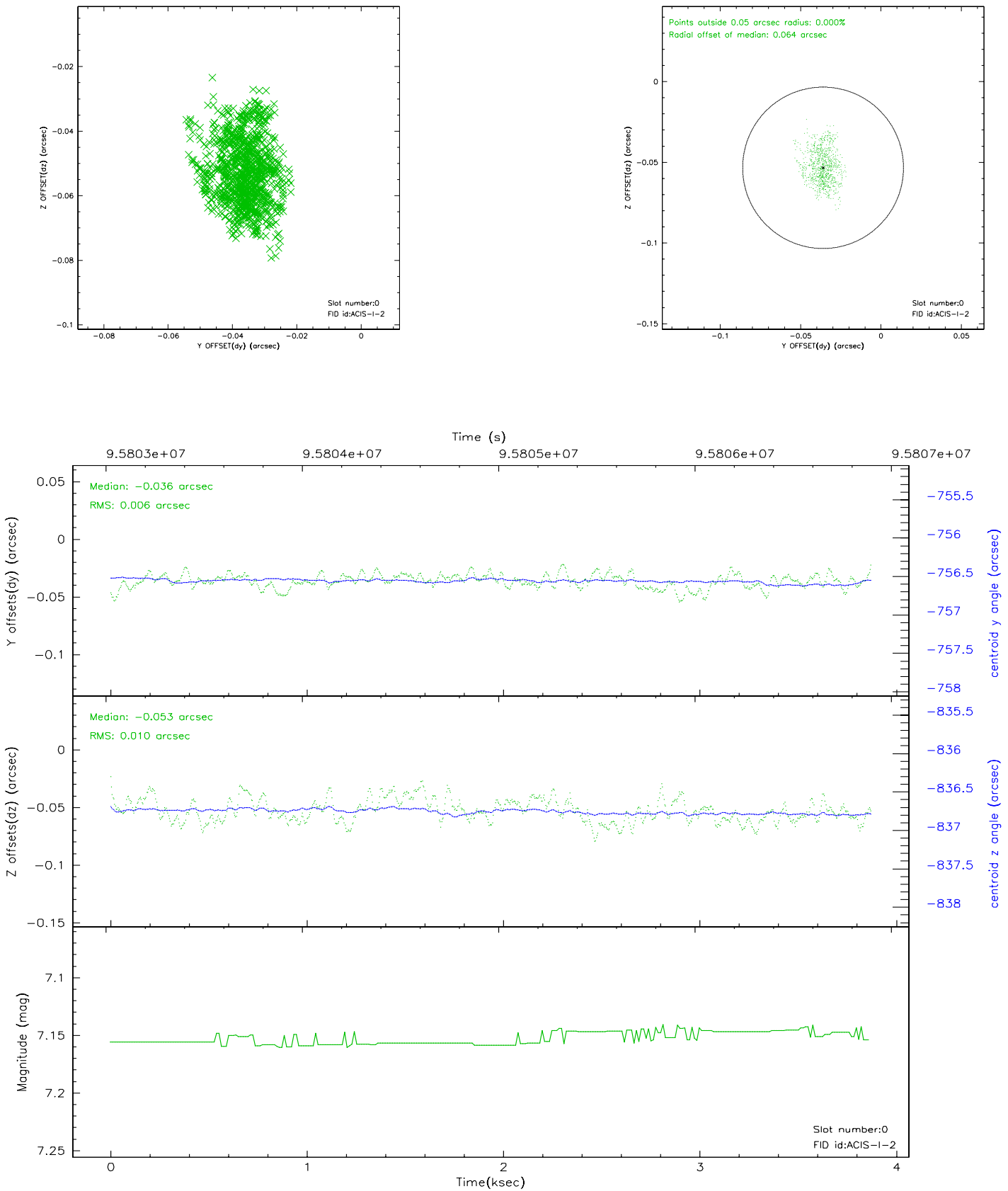


## 2.4.5 Slot 7

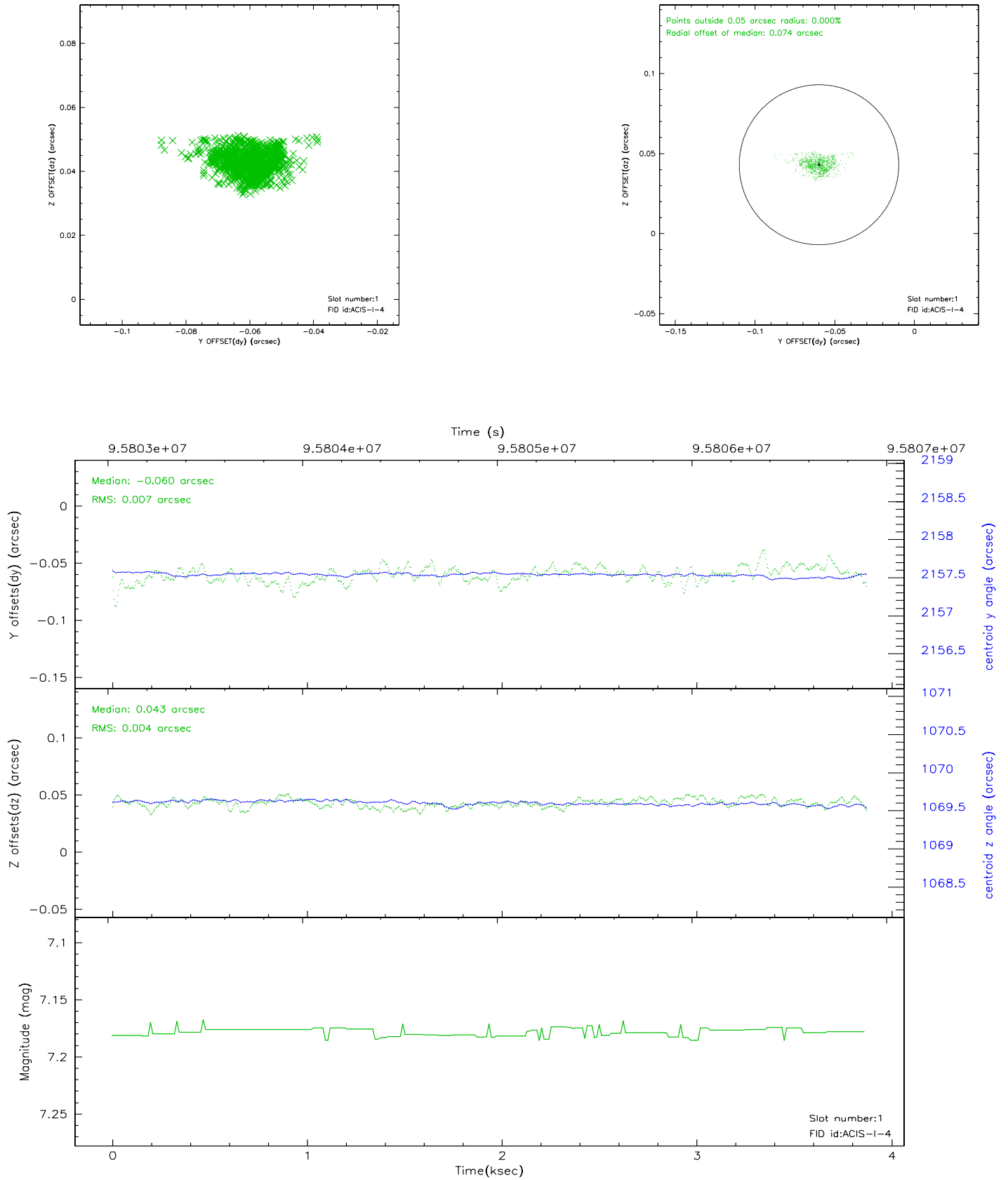


## 2.5 FID Slots

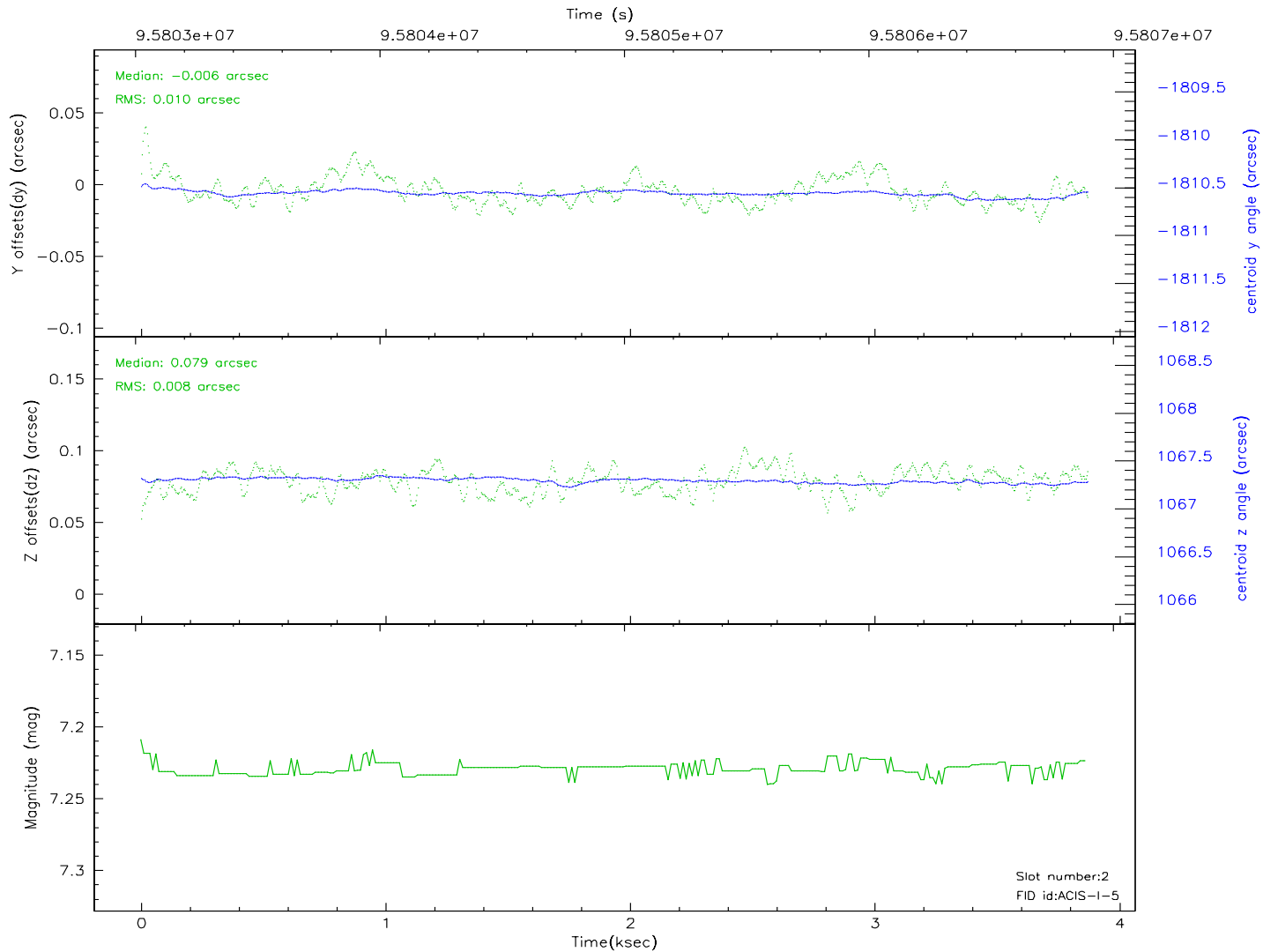
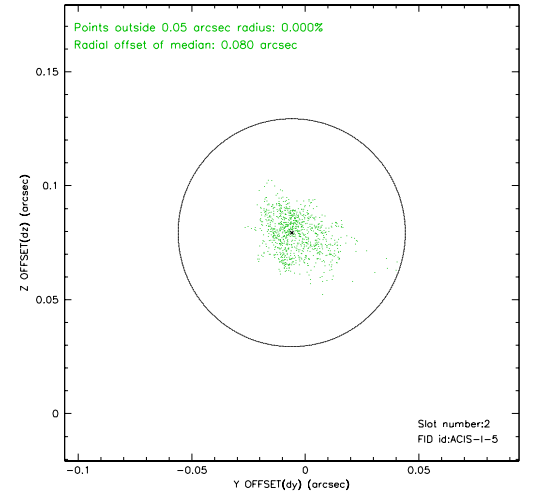
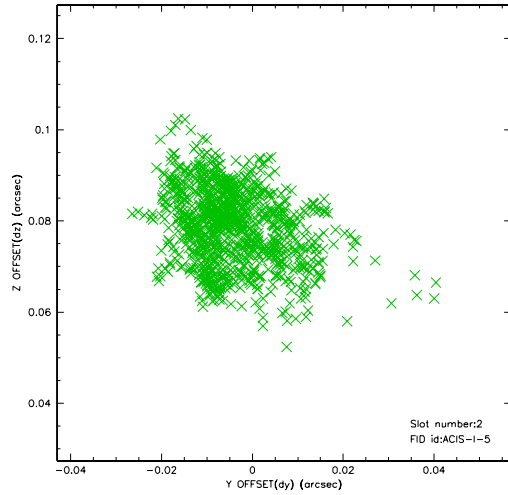
### 2.5.1 Slot 0



## 2.5.2 Slot 1



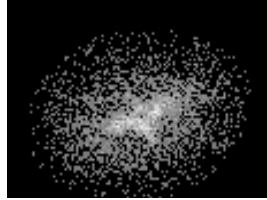
### 2.5.3 Slot 2





### 3 Point Sources

7.06 arcmin



# A Summary

## A.1 Status

V&V Scientist	Jen Lauer
V&V Date (YYYY-MM-DD)	2006.11.06
V&V Edition	1
V&V Disposition and Status	OK
V&V Charge Time	3.867

## A.2 Comments

Window constraint met.