

V&V Reference Report

L2 ASCDS Version : 8.4.5

Observation 2428 - L2 Version 3
Chandra X-Ray Center

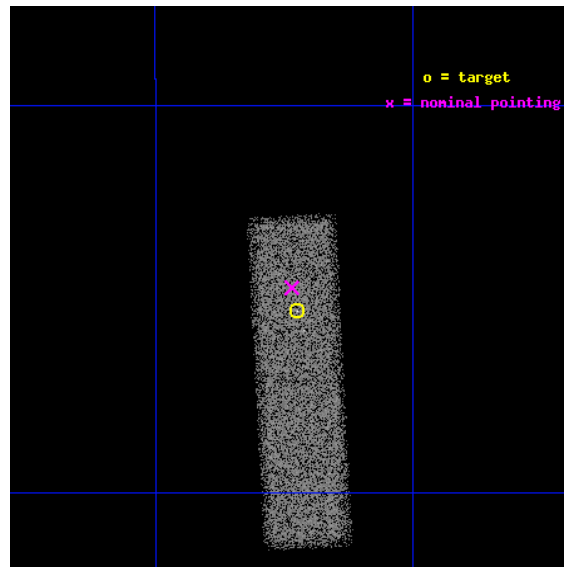
L2 Processing Date : Sep 14 2012

Contents

1	Front	2
2	OBI	3
2.1	OBI	3
2.1.1	Images	3
2.1.2	Bias	3
2.1.3	Parameters	4
2.1.4	Events	4
2.2	Compared Parameters	5
2.3	Aspect	6
2.4	Star Slots	9
2.4.1	Slot 3	9
2.4.2	Slot 4	10
2.4.3	Slot 5	11
2.4.4	Slot 6	12
2.4.5	Slot 7	13
2.5	FID Slots	14
2.5.1	Slot 0	14
2.5.2	Slot 1	15
2.5.3	Slot 2	16
A	Summary	17
A.1	Status	17
A.2	Comments	17

1 Front

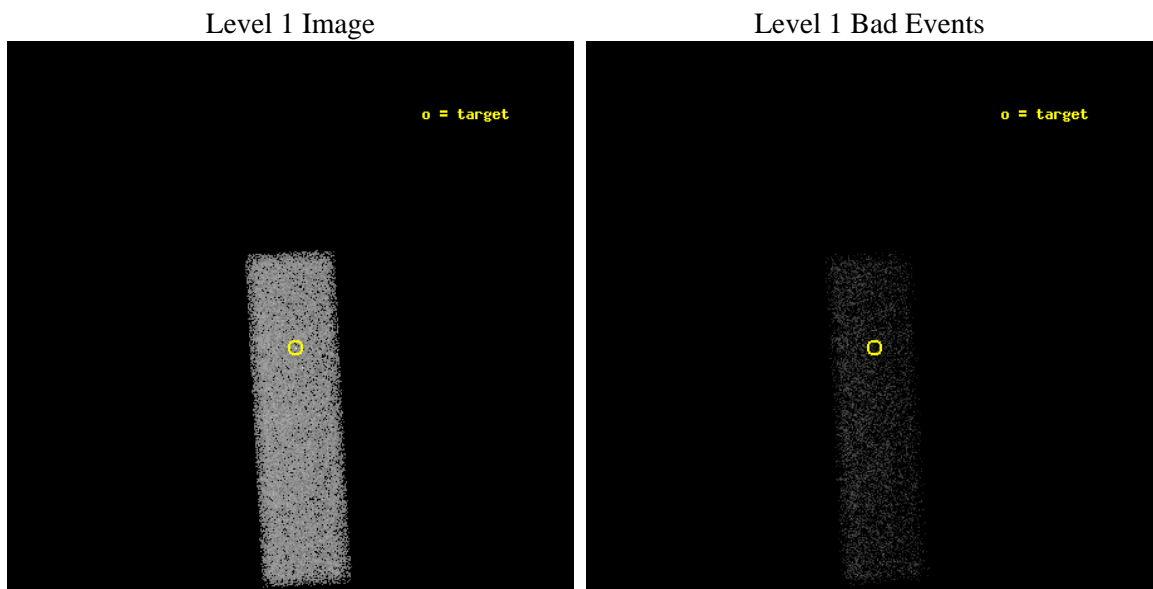
seq_num	400162	Sequence number
obs_id	2428	Observation id
title	A CHANDRA OBSERVATION OF THE LONG-DURATION TRANSIENT AND NEUTRON STAR LOW-MASS X-RAY BINARY KS 1731-260 IN QUIESCENCE	Proposal title
observer	Dr. Rudy Wijnands	Principal investigator
object	KS 1731-260	Source name
dtcycle	0	
cycle	P	events from which exps? Prim/Second/Both
ra_targ	263.55625	Observer's specified target RA [deg]
dec_targ	-26.088	Observer's specified target Dec [deg]
ra_nom	263.55877780884	Nominal RA [deg]
dec_nom	-26.078439082746	Nominal Dec [deg]
roll_nom	86.950212040203	Nominal Roll [deg]
revision	3	Processing version of data
ontime	20396.799924031	Sum of GTIs [s]
livetime	19401.502828908	Livetime [s]
ontime7	20396.799924031	Sum of GTIs [s]
l2events	23954	Number of level 2 events



2 OBI

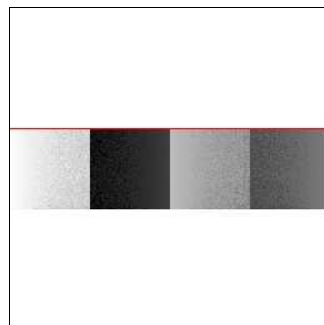
2.1 OBI

2.1.1 Images



2.1.2 Bias

Chip 7



2.1.3 Parameters

obi_num	0	Obi number	sched_exp_time	20000.000000	[s] Scheduled observation exposure time
ascdsver	8.4.5	Processing system revision	ontime	20396.799924031	Sum of GTIs [s]
caldsver	4.5.1.1	 	ontime7	20396.799924031	Sum of GTIs [s]
date	2012-09-14T20:00:05	Date and time of file creation	l1events	50034	Number of level 1 events
revision	3	Processing version of data			

2.1.4 Events

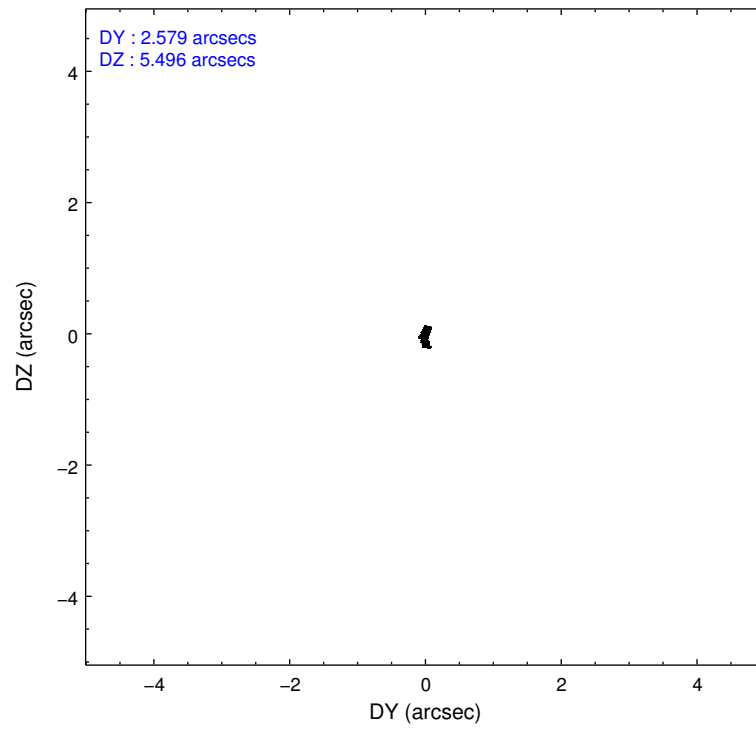
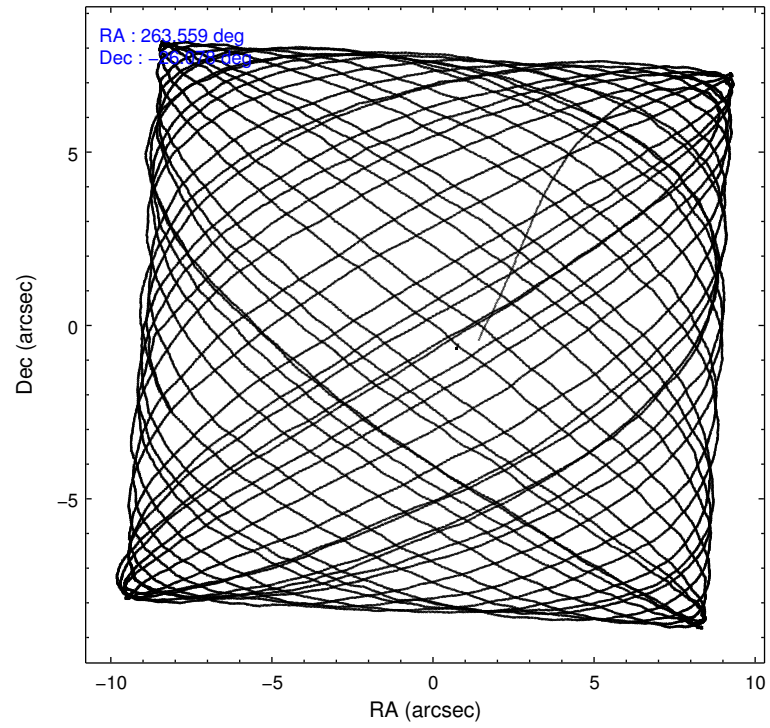
	ccd 7
level 1 events	50034
rejected events	25356
rejected %	50%

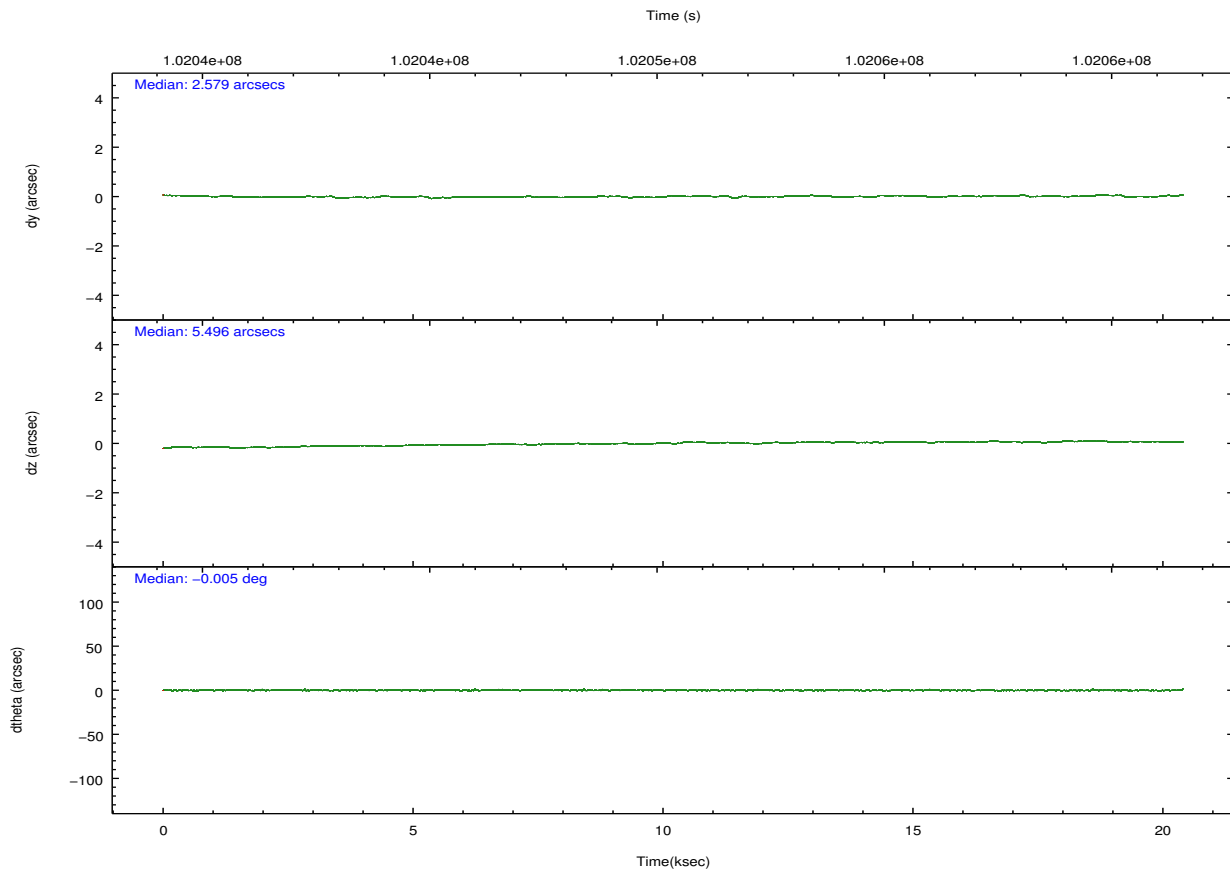
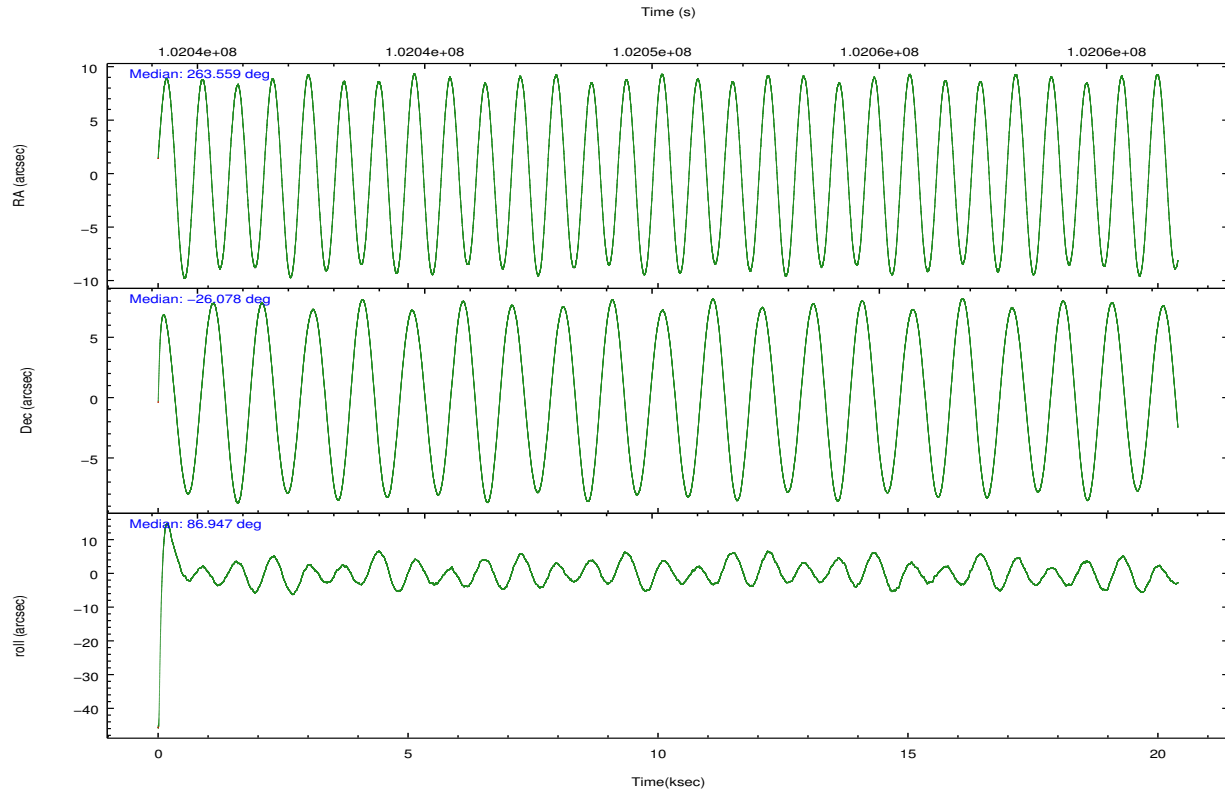
	ccd 7
grade 0 events	2564
	5%
grade 1 events	56
	0%
grade 2 events	4884
	9%
grade 3 events	2704
	5%
grade 4 events	2596
	5%
grade 5 events	4307
	8%
grade 6 events	12308
	24%
grade 7 events	20615
	41%

2.2 Compared Parameters

Parameter	Planned	Actual	Parameter	Planned	Actual
Instrument	ACIS	ACIS	Obspar format version number	7	7
Detector	ACIS-7	ACIS-7	Obspar file type	PREDICTED	ACTUAL
Grating	NONE	NONE	Obspar update status	NONE	UPDATED
Data mode	FAINT	FAINT	Number of optional ACIS chips dropped	0	0
Observation mode	POINTING	POINTING	On-chip summing requested	N	N
[deg] Pointing RA	263.572802	263.5587778088388	Subarray requested	CUSTOM	1/4
[deg] Pointing Dec	-26.102687	-26.07843908274607	Subarray start row	384	384
[deg] Pointing Roll	86.799785	86.95021204020337	Subarray row count	256	256
[mm] SIM focus pos	-0.684267	-0.6828225247311905	Alternating exposures requested	N	N
[mm] SIM defocus	0	0.001444936568705701	[s] Primary exposure time	0.000000	0.8
[mm] SIM translation stage pos	-190.132523	-190.1425803651734			
[mm] SIM translation stage offset	0	0.01005778216563158			
[s] Observation start time (MET)	102040552.184000	102039488.99682			
Observation start date	2001-03-27T00:34:48	2001-03-27T00:18:08			
[s] Observation end time (MET)	102060552.184000	102061430.66017			
Observation end date	2001-03-27T06:08:08	2001-03-27T06:23:50			
Read mode	TIMED	TIMED			

2.3 Aspect



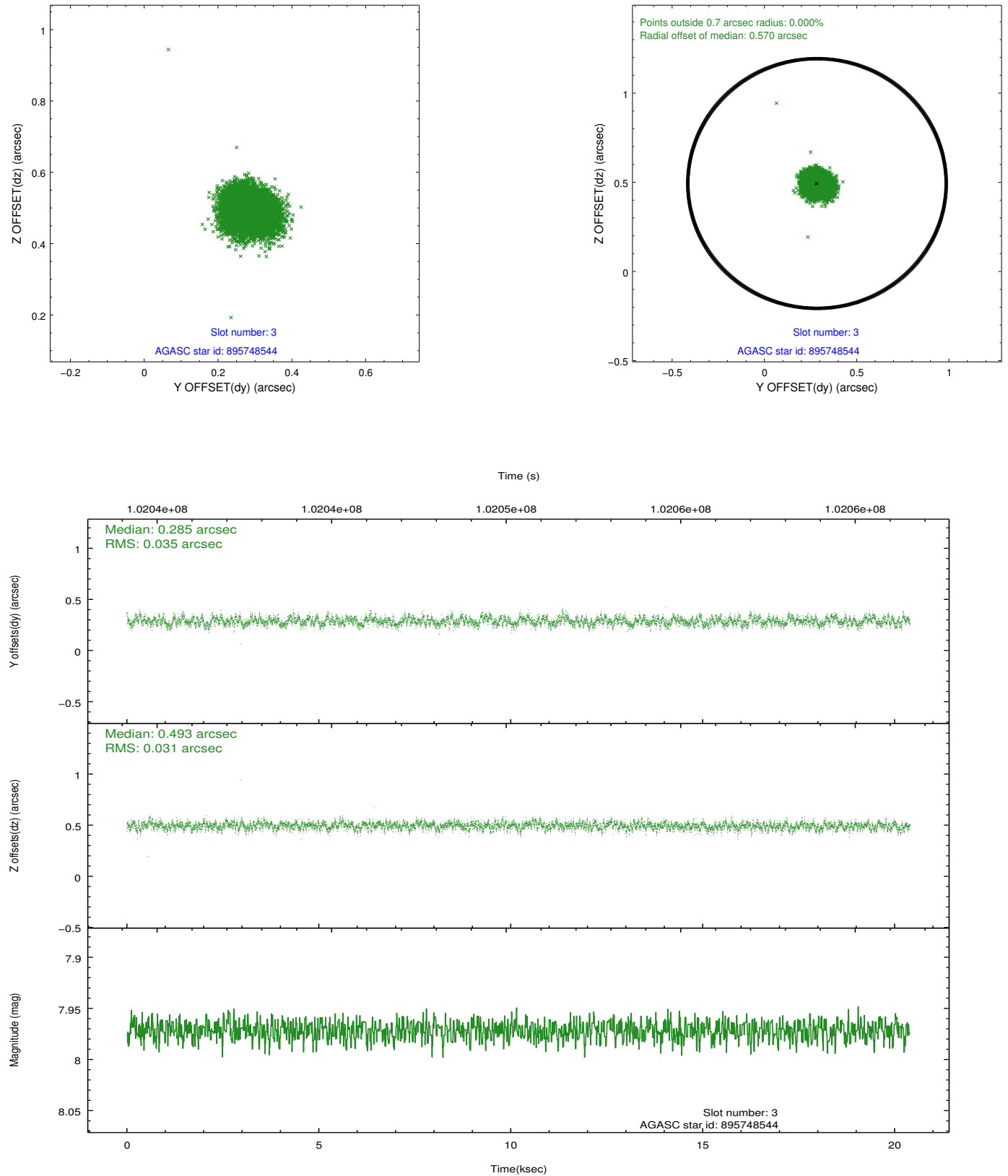


Slot Statistics

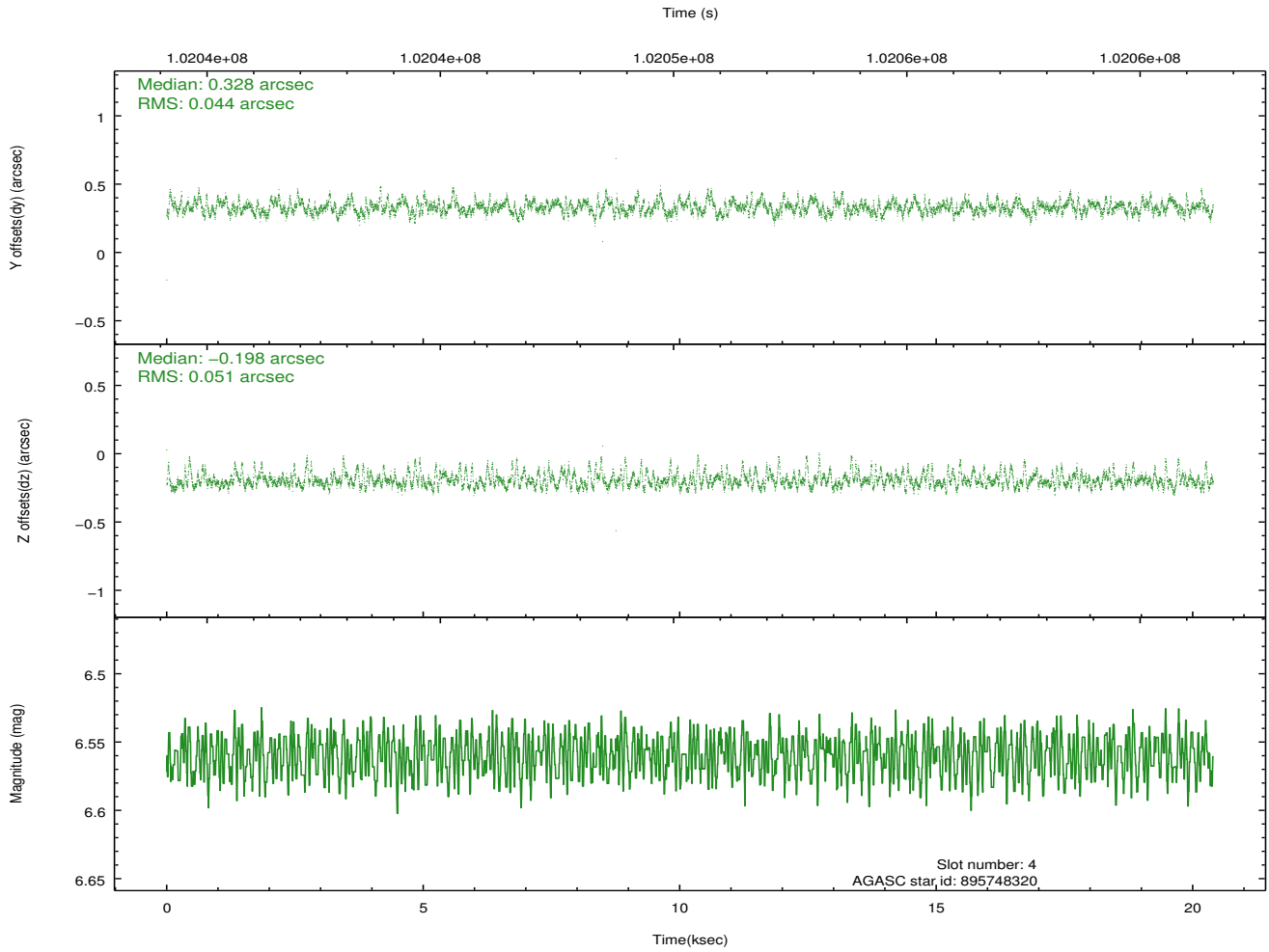
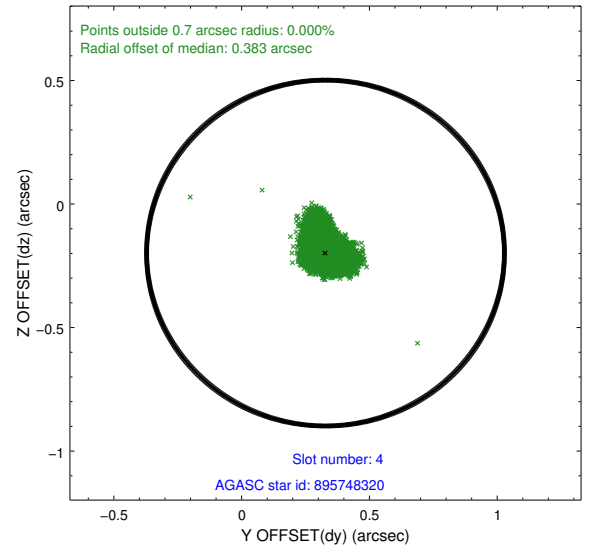
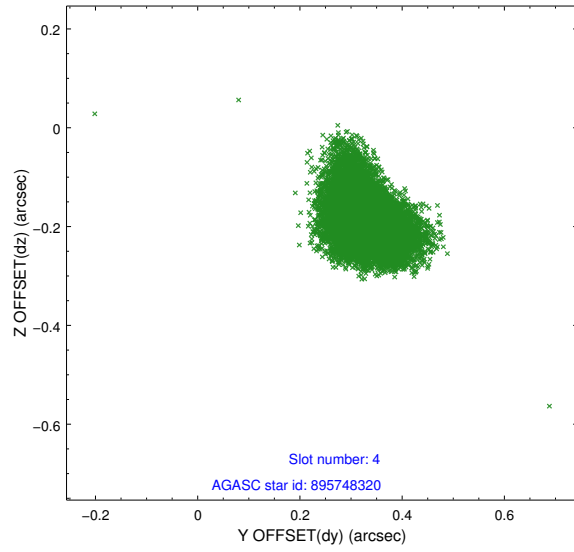
slot	status	id	mag	n_pts	med_dy	med_dz	dr1	dr2	ra	dec	mean_y	mean_z
0	FID	ACIS-S-2	7.12	4976	-0.039	-0.010	0.007	0.011	0.000000	0.000000	-755.20	-1726.58
1	FID	ACIS-S-4	7.20	4976	-0.017	0.022	0.005	0.010	0.000000	0.000000	2157.96	181.82
2	FID	ACIS-S-5	7.24	4976	0.025	-0.002	0.006	0.011	0.000000	0.000000	-1807.80	175.57
3	GUIDE	895748544	7.97	9951	0.285	0.493	0.050	0.081	263.692859	-26.739685	-2268.29	-513.52
4	GUIDE	895748320	6.56	9951	0.328	-0.198	0.070	0.121	262.934888	-26.269719	-720.77	2021.52
5	GUIDE	895353104	10.22	9940	-0.113	-0.001	0.137	0.212	263.748270	-25.444684	2395.85	-437.30
6	GUIDE	895882536	9.57	9946	0.147	0.294	0.090	0.158	264.066482	-26.424198	-1069.70	-1654.15
7	GUIDE	895748008	10.30	9942	-0.648	-0.592	0.139	0.227	263.427607	-26.754061	-2368.74	333.78

2.4 Star Slots

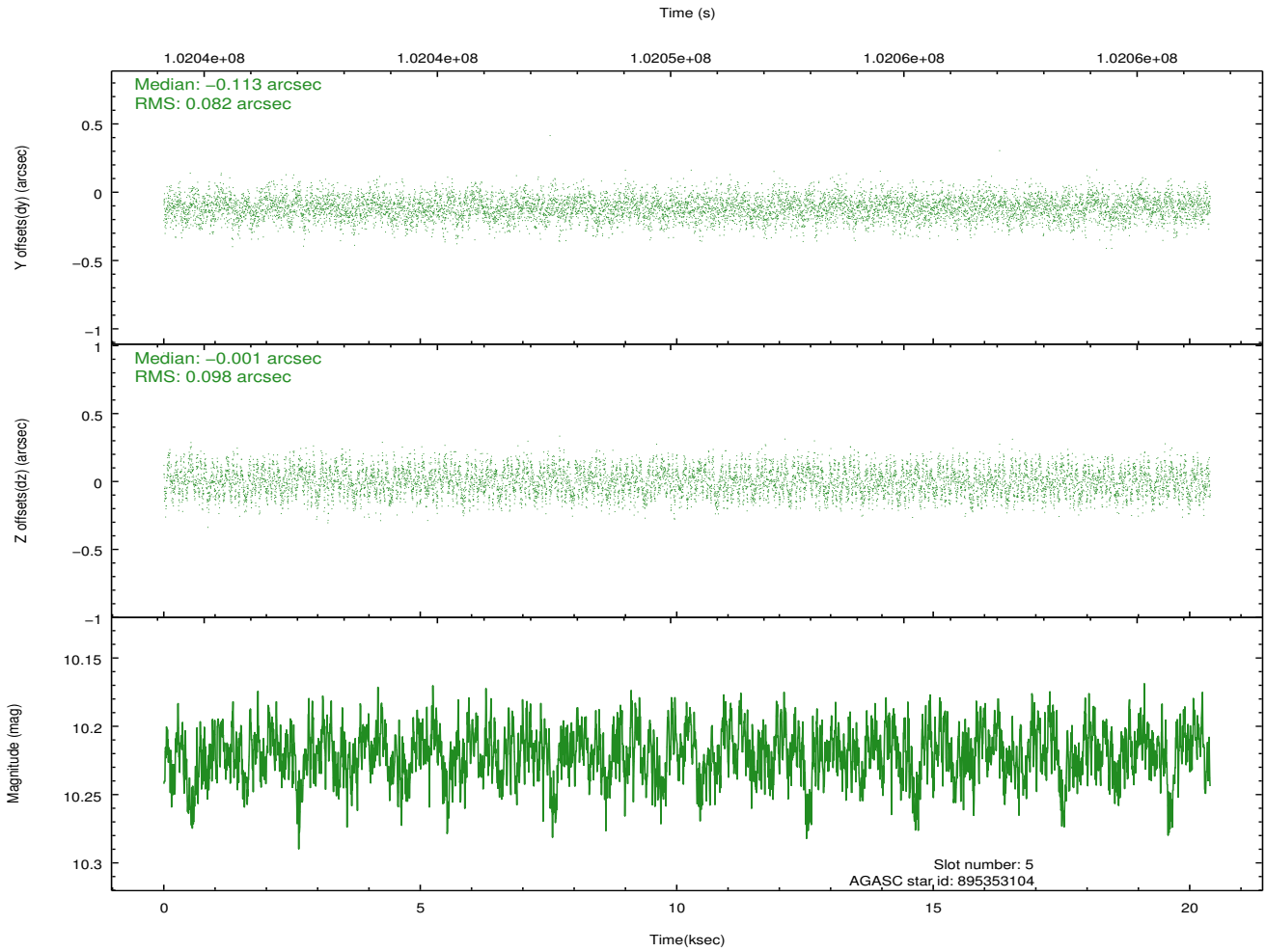
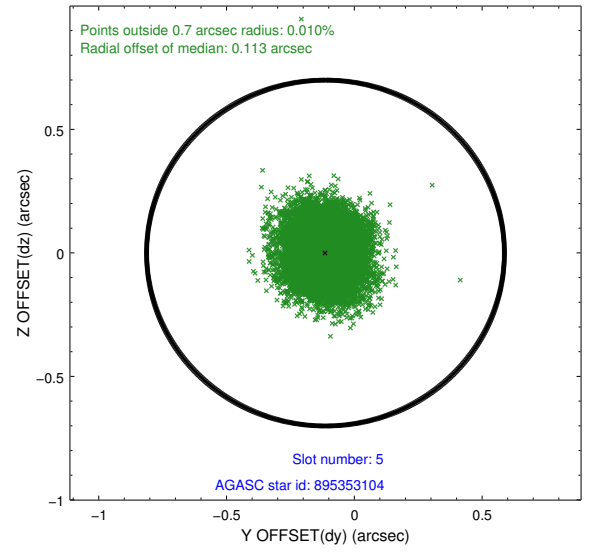
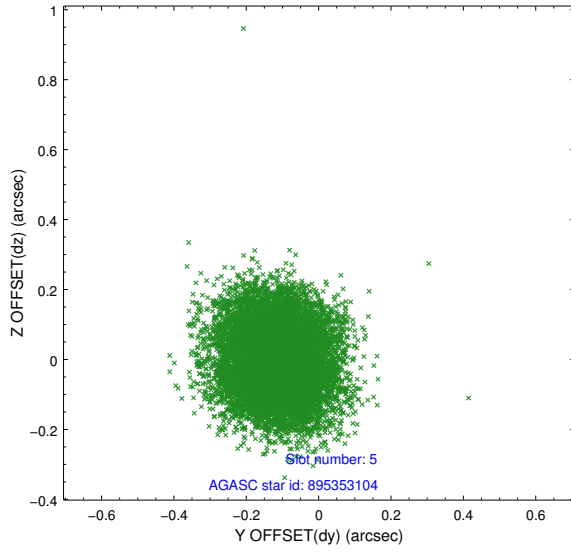
2.4.1 Slot 3



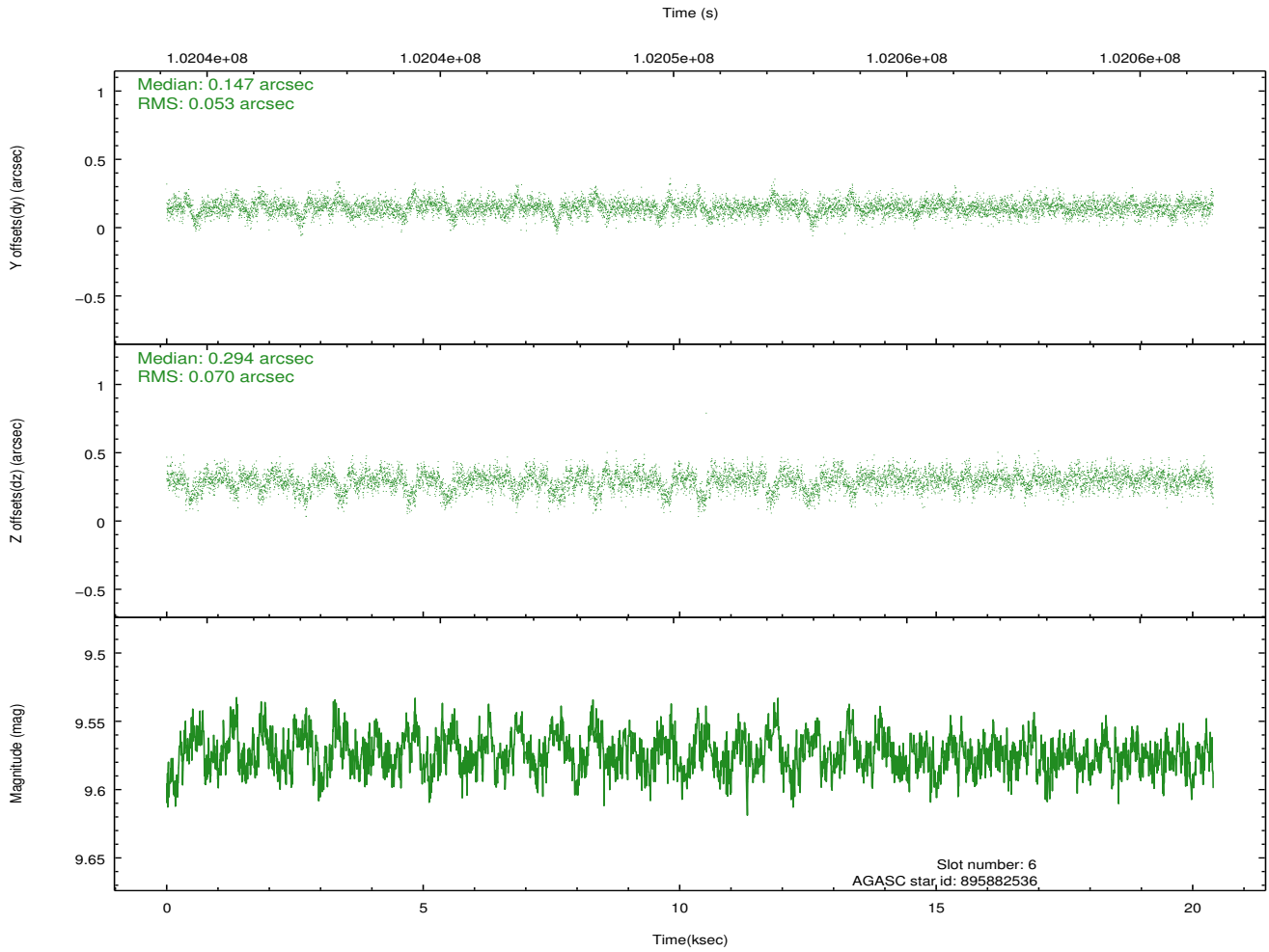
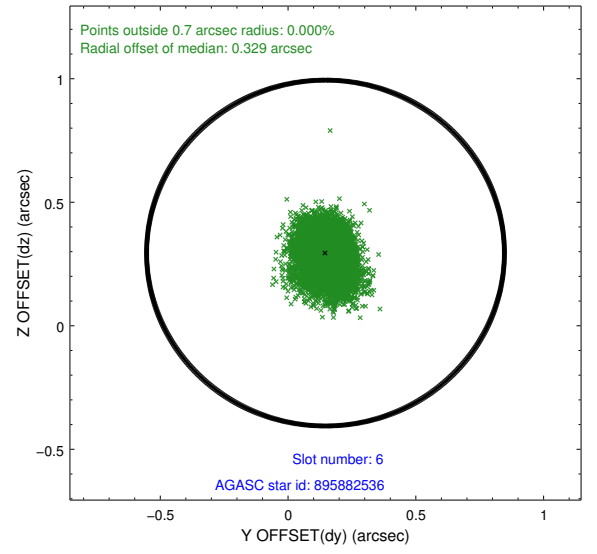
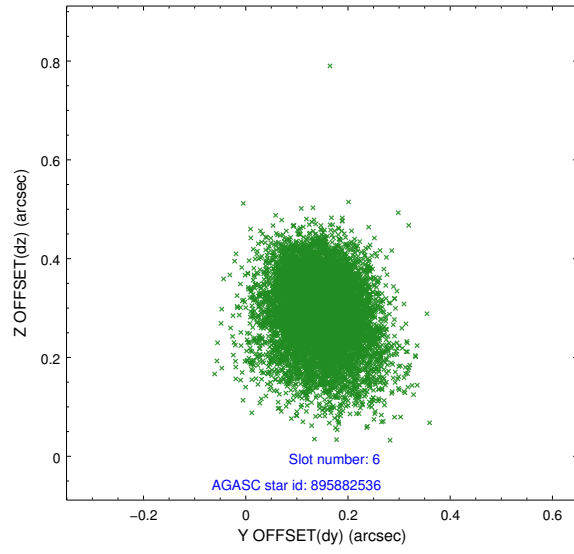
2.4.2 Slot 4



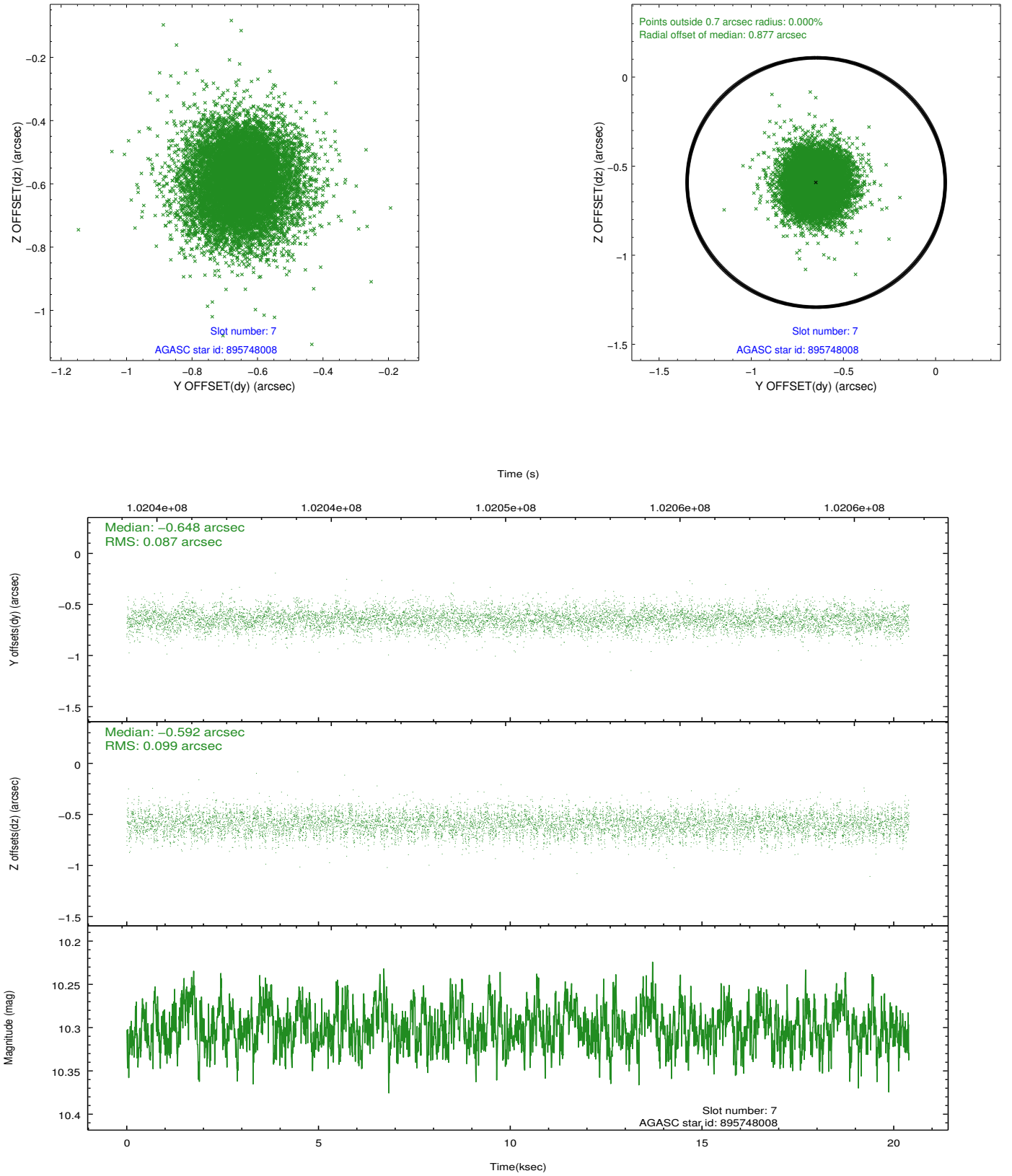
2.4.3 Slot 5



2.4.4 Slot 6

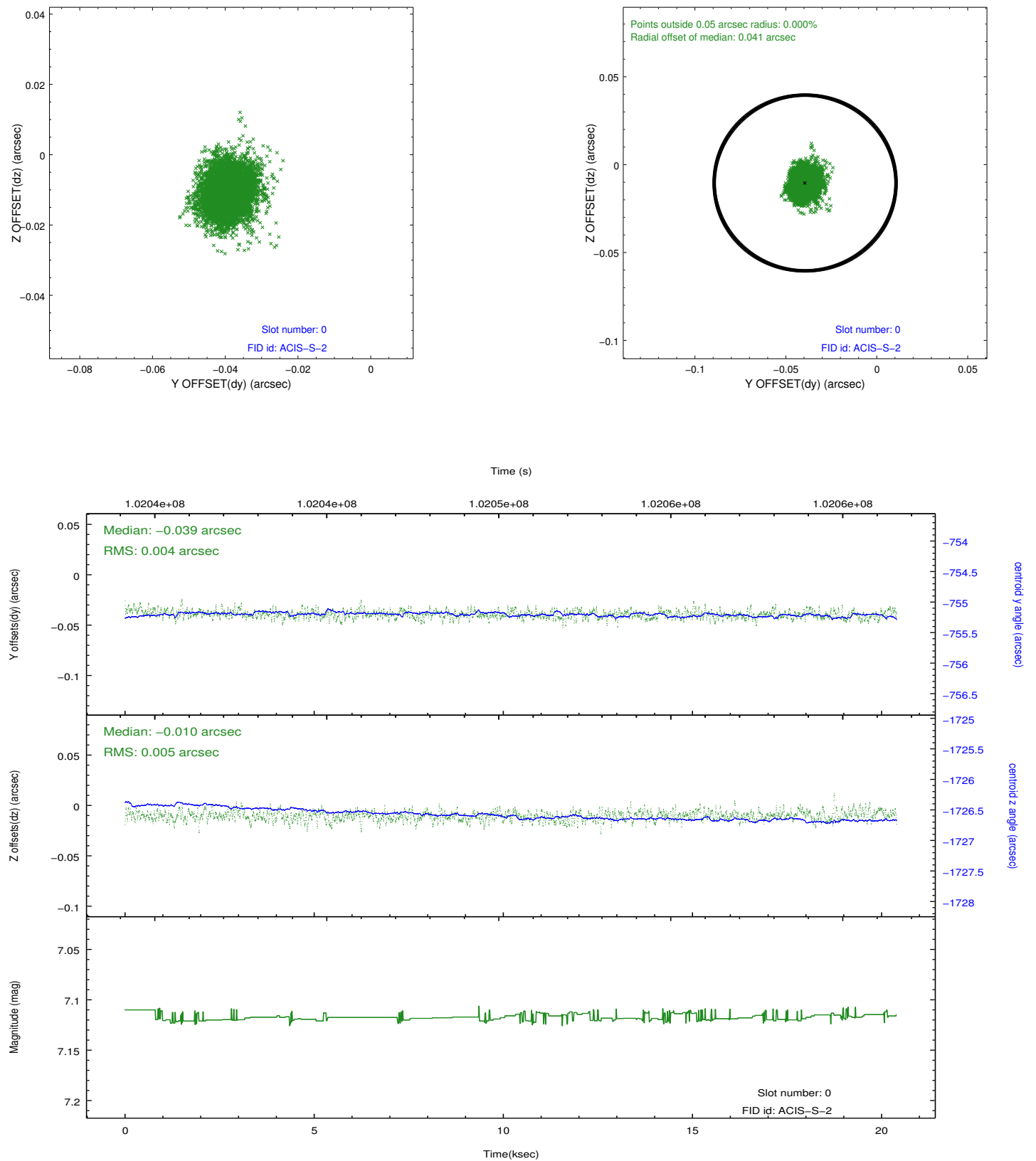


2.4.5 Slot 7

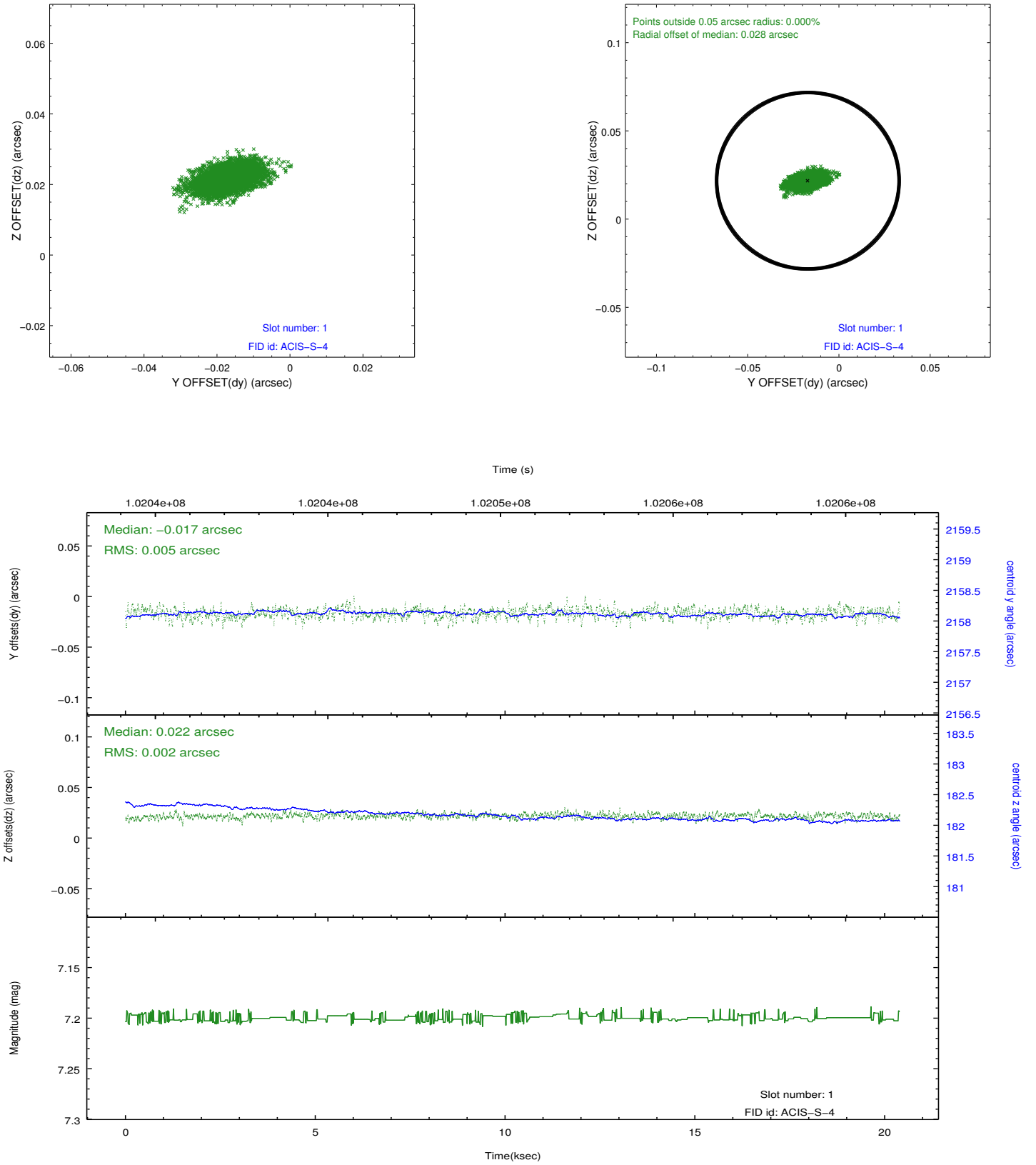


2.5 FID Slots

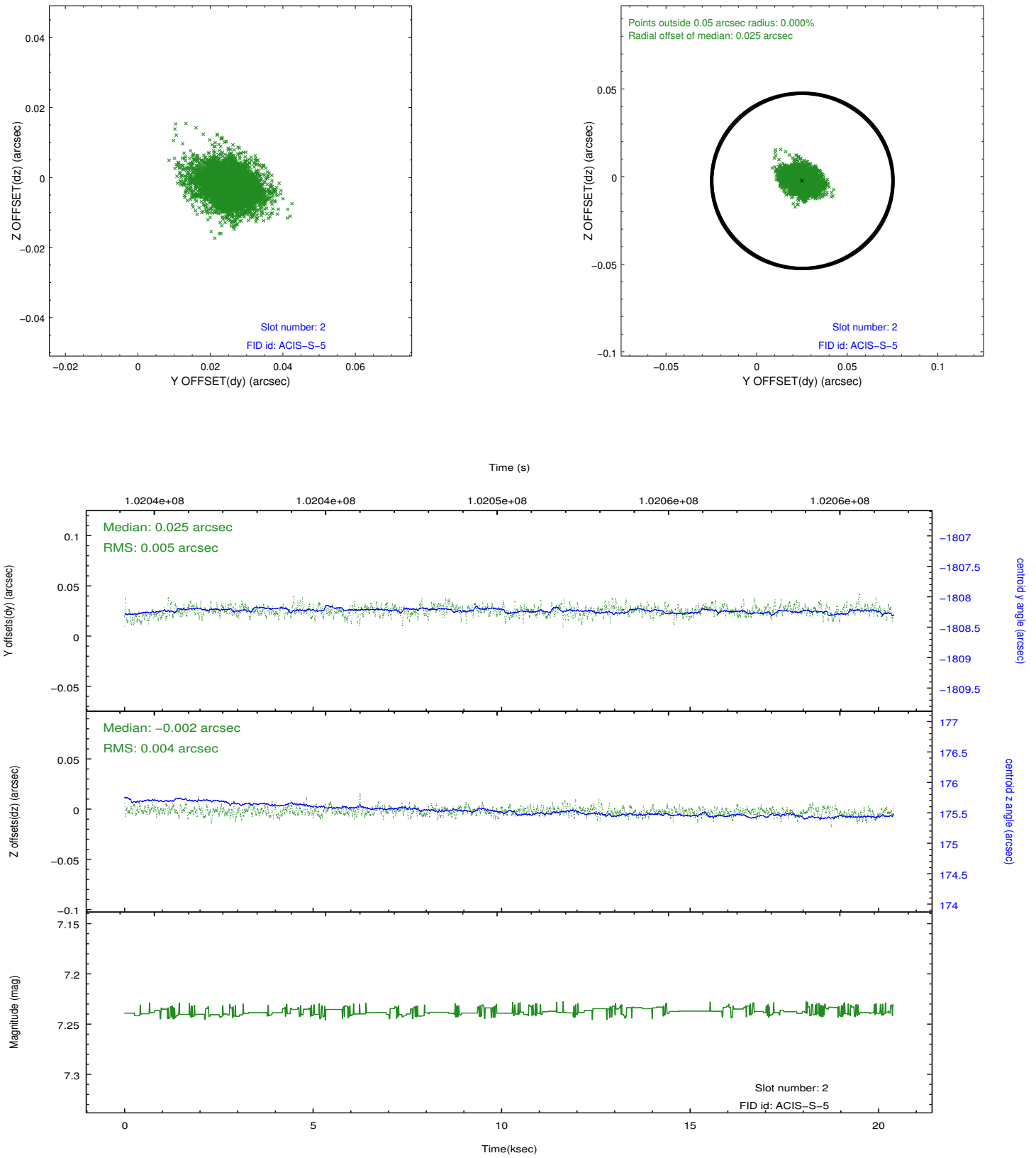
2.5.1 Slot 0



2.5.2 Slot 1



2.5.3 Slot 2



A Summary

A.1 Status

V&V Scientist	Beth Sundheim
V&V Date (YYYY-MM-DD)	2012.09.19
V&V Edition	1
V&V Disposition and Status	OK
V&V Charge Time	20.4

A.2 Comments