

V&V Reference Report

L2 ASCDS Version : 7.6.9

Observation 1941 - L2 Version 001
Chandra X-Ray Center

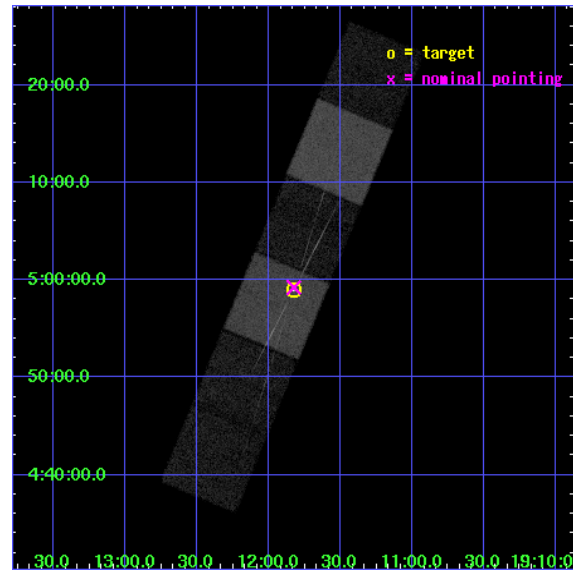
L2 Processing Date : Dec 28 2006

Contents

1	Front	2
2	OBI	3
2.1	OBI	3
2.1.1	Images	3
2.1.2	Bias	3
2.1.3	Parameters	4
2.1.4	Events	4
2.2	Compared Parameters	5
2.3	Aspect	6
2.4	Star Slots	9
2.4.1	Slot 3	9
2.4.2	Slot 4	10
2.4.3	Slot 5	11
2.4.4	Slot 6	12
2.4.5	Slot 7	13
2.5	FID Slots	14
2.5.1	Slot 0	14
2.5.2	Slot 1	15
2.5.3	Slot 2	16
3	Gratings	17
3.1	HEG Arm	17
3.2	MEG Arm	19
A	Summary	21
A.1	Status	21
A.2	Comments	21

1 Front

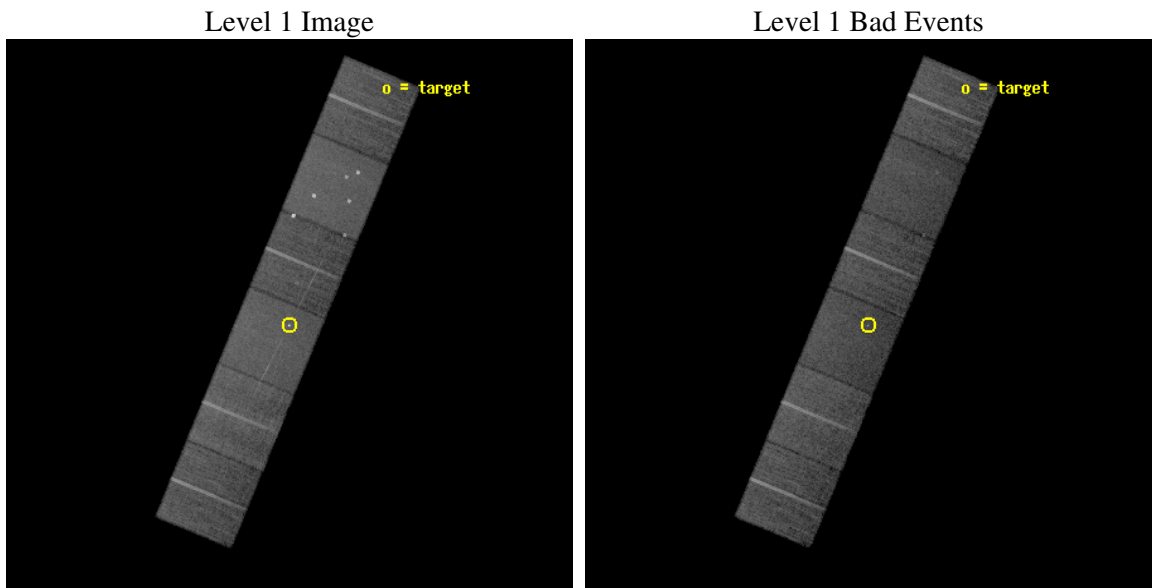
seq_num	400154
obs_id	1941
title	MAPPING THE JETS OF SS 433
observer	Dr. masaaki namiki
object	SS 433
dtcycle	0
cycle	P
ra_targ	287.95625
dec_targ	4.982806
ra_nom	287.95624616043
dec_nom	4.9872901394372
roll_nom	112.58832593401
revision	2
ontime	18755.200017467
livetime	18517.71038182
ontime4	18755.200017467
ontime5	18755.200017467
ontime6	18755.200017467
ontime7	18755.200017467
ontime8	18755.200017467
ontime9	18755.200017467
l2events	181203



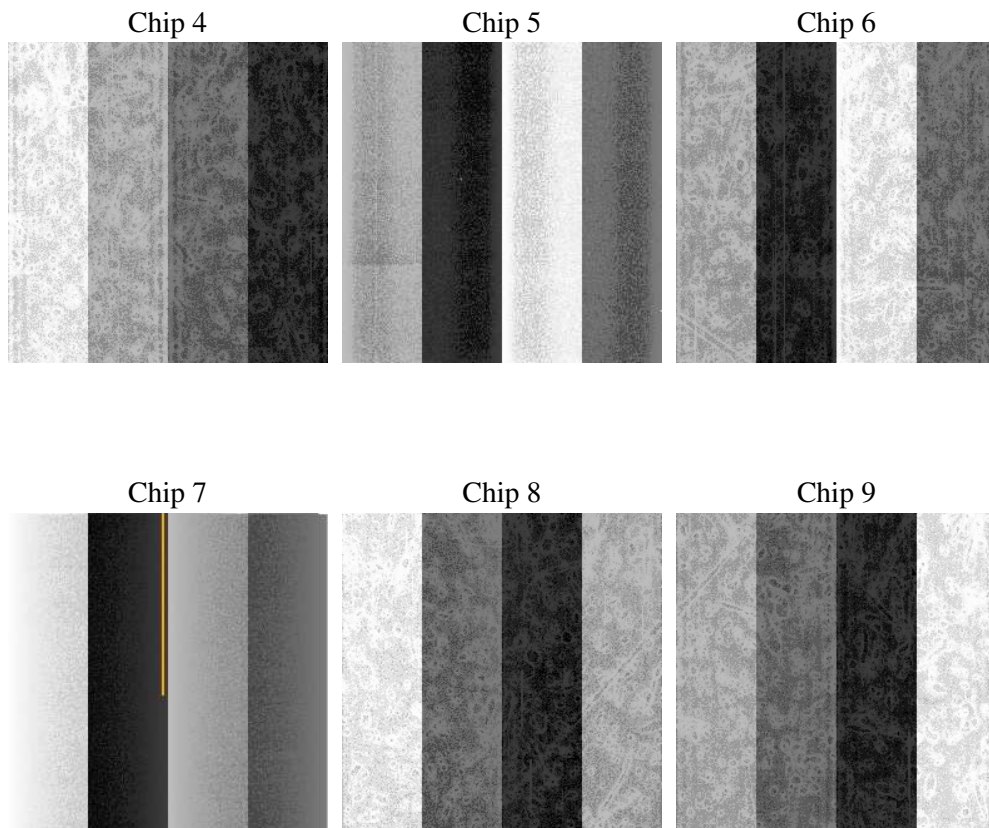
2 OBI

2.1 OBI

2.1.1 Images



2.1.2 Bias



2.1.3 Parameters

obi_num	0
ascdsver	7.6.9
caldsver	3.2.4
date	2006-11-21T13:20:44
revision	2

sched_exp_time	19000.000000
ontime	18758.910768107
ontime4	18758.91073817
ontime5	18758.910768107
ontime6	18758.91073817
ontime7	18758.910768107
ontime8	18758.910678416
ontime9	18758.91073817
l1events	880033

2.1.4 Events

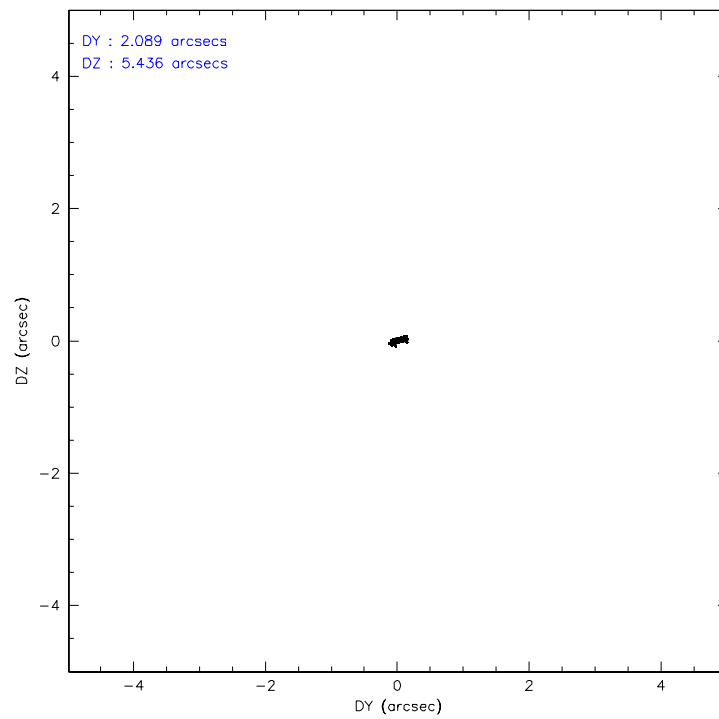
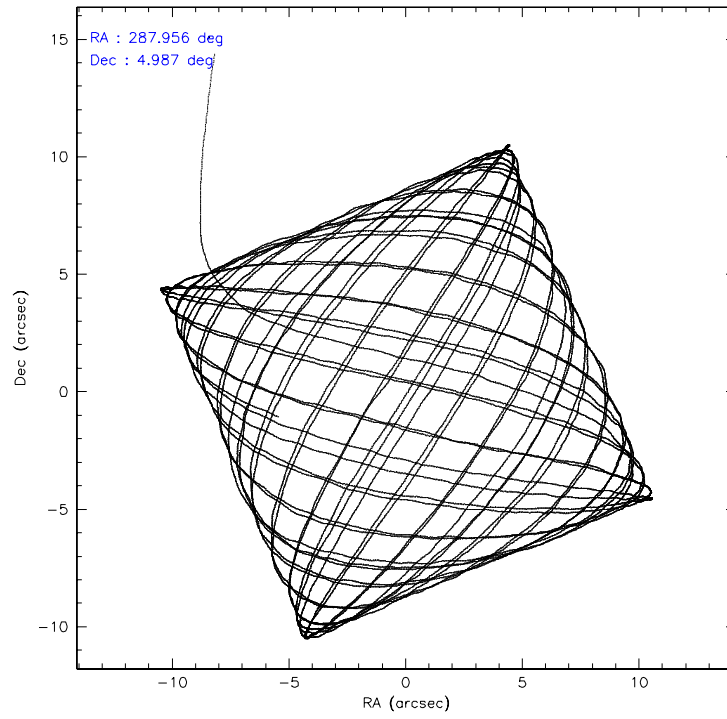
	ccd 4	ccd 5	ccd 6	ccd 7	ccd 8	ccd 9
level 1 events	136451	173867	130511	158806	158021	122377
rejected events	122099	94618	109191	94855	125436	108267
rejected %	89%	54%	83%	59%	79%	88%

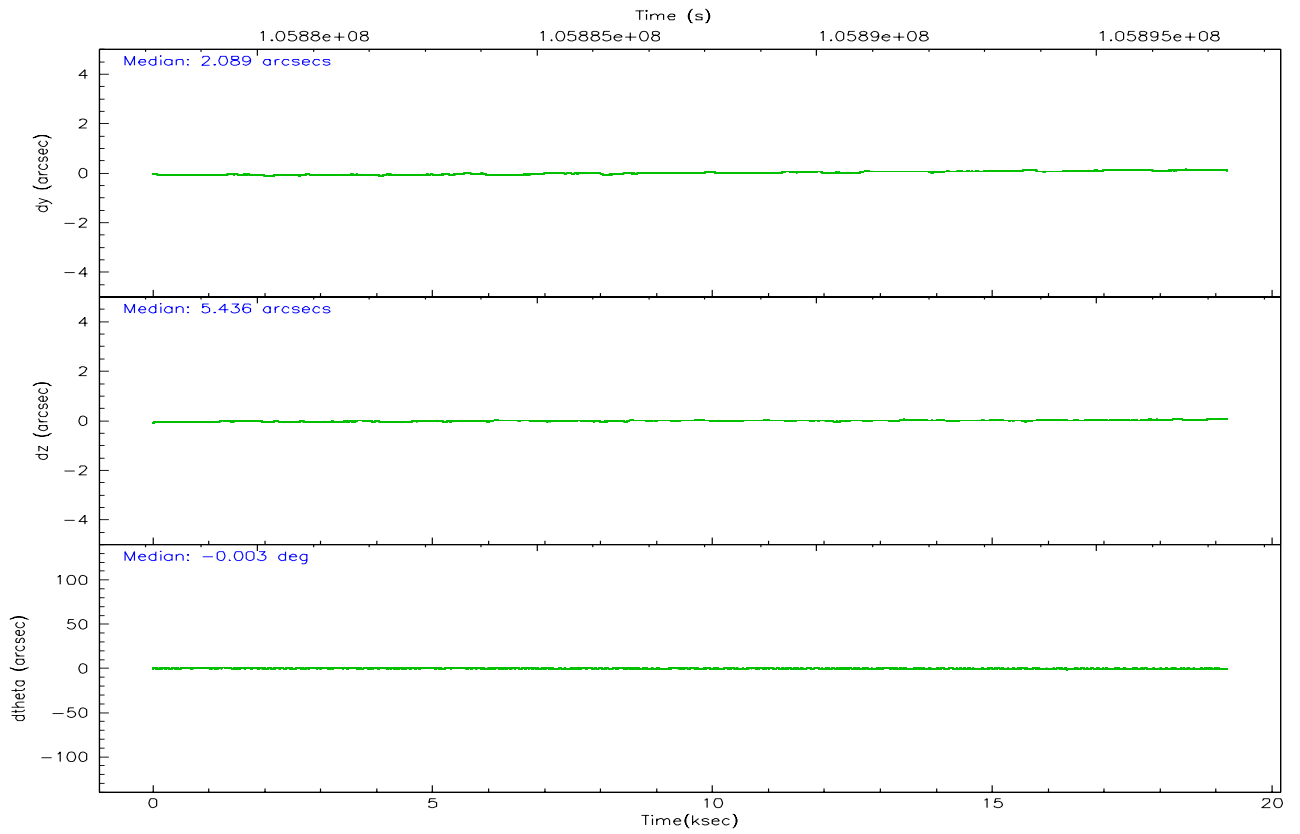
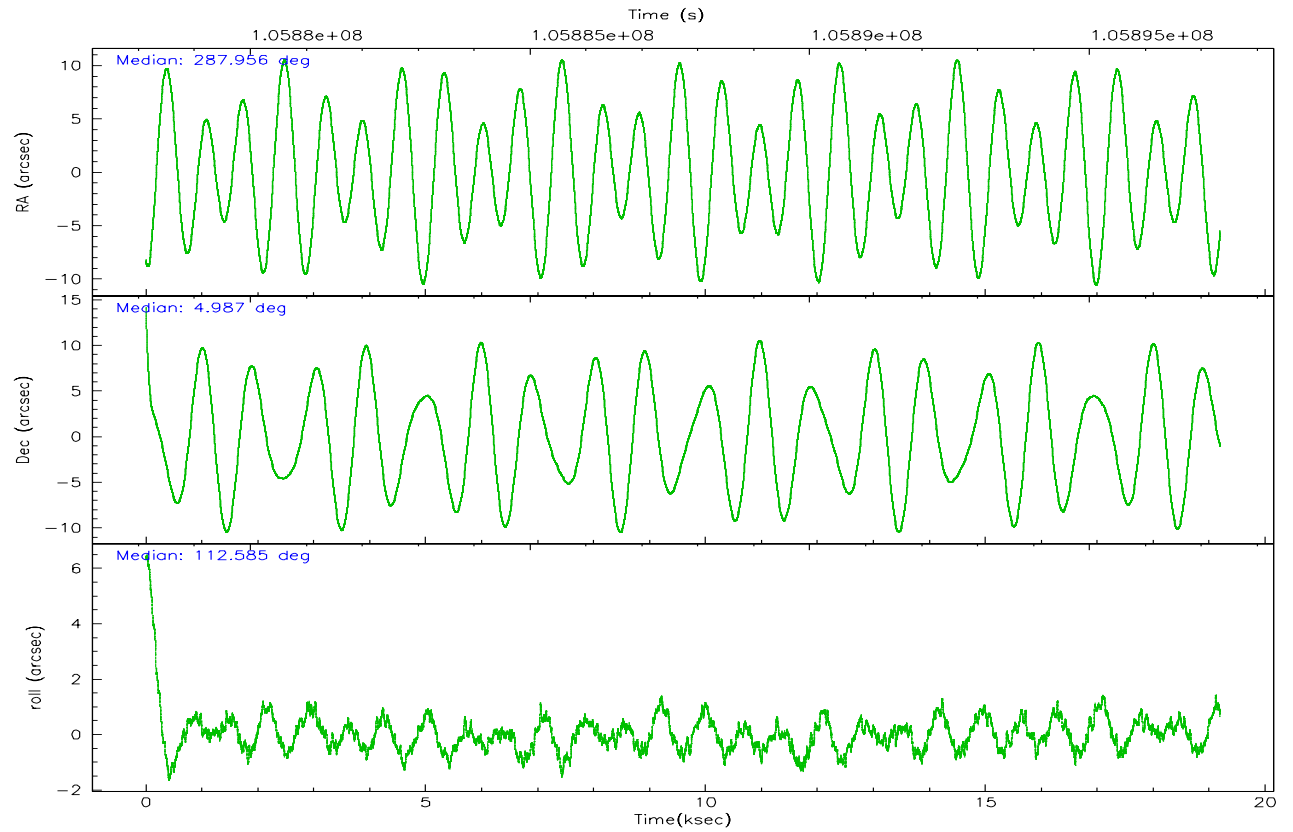
	ccd 4	ccd 5	ccd 6	ccd 7	ccd 8	ccd 9
grade 0 events	5734	12034	12703	4452	10345	5567
	4%	6%	9%	2%	6%	4%
grade 1 events	55	327	88	115	94	47
	0%	0%	0%	0%	0%	0%
grade 2 events	3492	22050	2950	15898	6781	2921
	2%	12%	2%	10%	4%	2%
grade 3 events	1320	1692	1433	3761	3454	1414
	0%	0%	1%	2%	2%	1%
grade 4 events	1256	1619	1513	3692	3236	1372
	0%	0%	1%	2%	2%	1%
grade 5 events	4345	8211	5197	10682	6421	5337
	3%	4%	3%	6%	4%	4%
grade 6 events	2554	41879	2726	36169	8772	2851
	1%	24%	2%	22%	5%	2%
grade 7 events	117695	86055	103901	84037	118918	102868
	86%	49%	79%	52%	75%	84%

2.2 Compared Parameters

Parameter	Planned	Actual	Parameter	Planned	Actual
Instrument	ACIS	ACIS	Obspar format version number	6	6
Detector	ACIS-456789	ACIS-456789	Obspar file type	PREDICTED	ACTUAL
Grating	HETG	HETG	Obspar update status	NONE	UPDATED
Data mode	FAINT	FAINT	Number of optional ACIS chips dropped	0	0
Observation mode	POINTING	POINTING	On-chip summing requested	N	N
Pointing RA	287.978188	287.9562461604262	Subarray requested	NONE	NONE
Pointing Dec	4.970915	4.987290139437232	Alternating exposures requested	N	N
Pointing Roll	112.429788	112.5883259340139	Primary exposure time	0.000000	3.2
Window start time	105840064.184000	105840064.184000			
Window stop time	105926464.184000	105926464.184000			
SIM focus pos (mm)	-0.684267	-0.6828225247311905			
SIM defocus (mm)	0	0.001444936568705701			
SIM translation stage pos (mm)	-187.132523	-187.1228876879999			
SIM translation stage offset (mm)	-3	-3.009634895007935			
Phase constraints	Y	Y			
Phase period	13.082000	13.082000			
Phase epoch	46595.700000	46595.700000			
Phase start	0.100000	0.100000			
Phase end	0.150000	0.150000			
Phase start error	0.030000	0.030000			
Phase end error	0.030000	0.030000			
Observation start time	105878333.184000	105877553.98314			
Observation start date	2001-05-10T10:37:49	2001-05-10T10:25:53			
Observation end time	105897333.184000	105899184.04648			
Observation end date	2001-05-10T15:54:29	2001-05-10T16:26:24			

2.3 Aspect



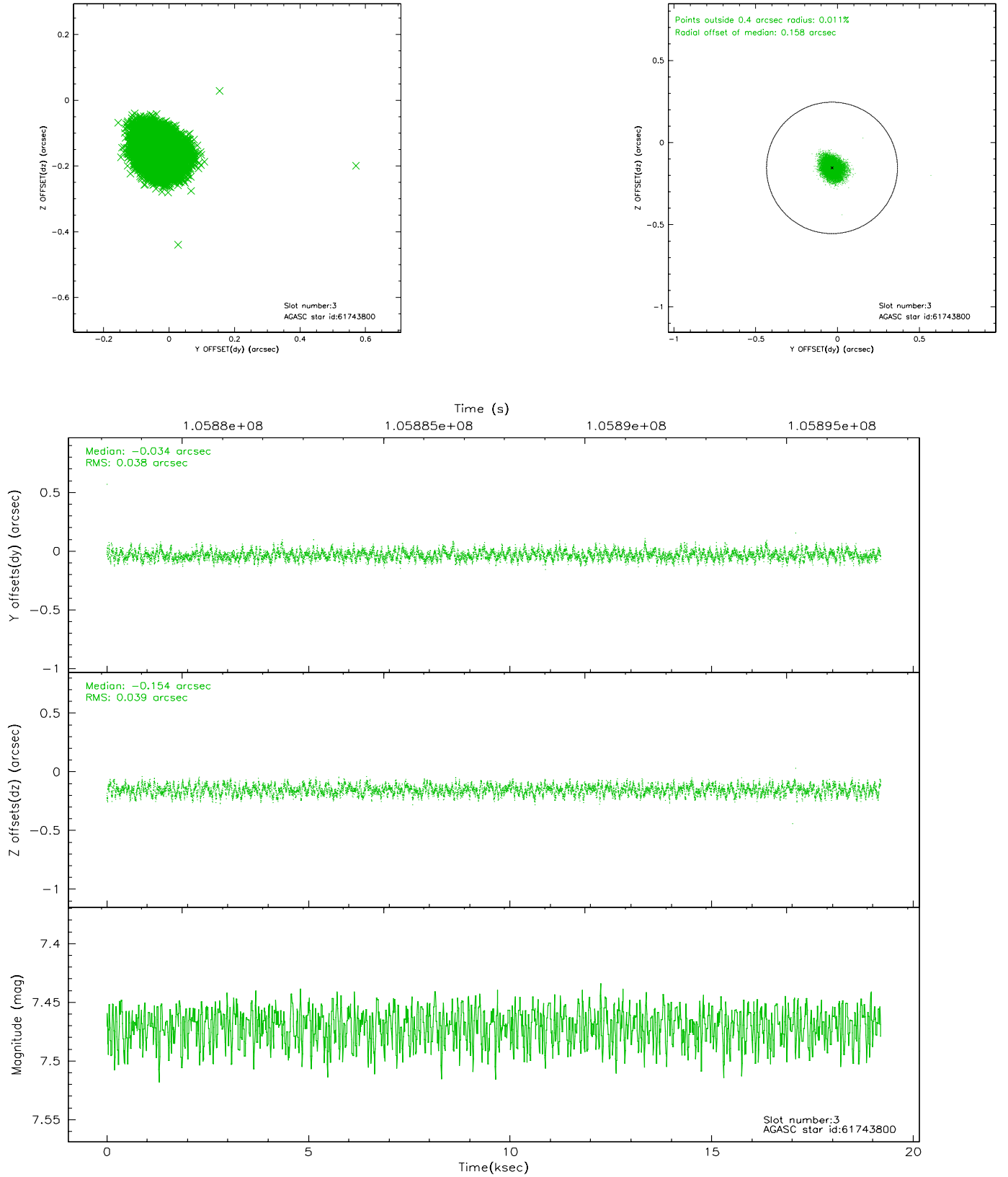


Slot Statistics

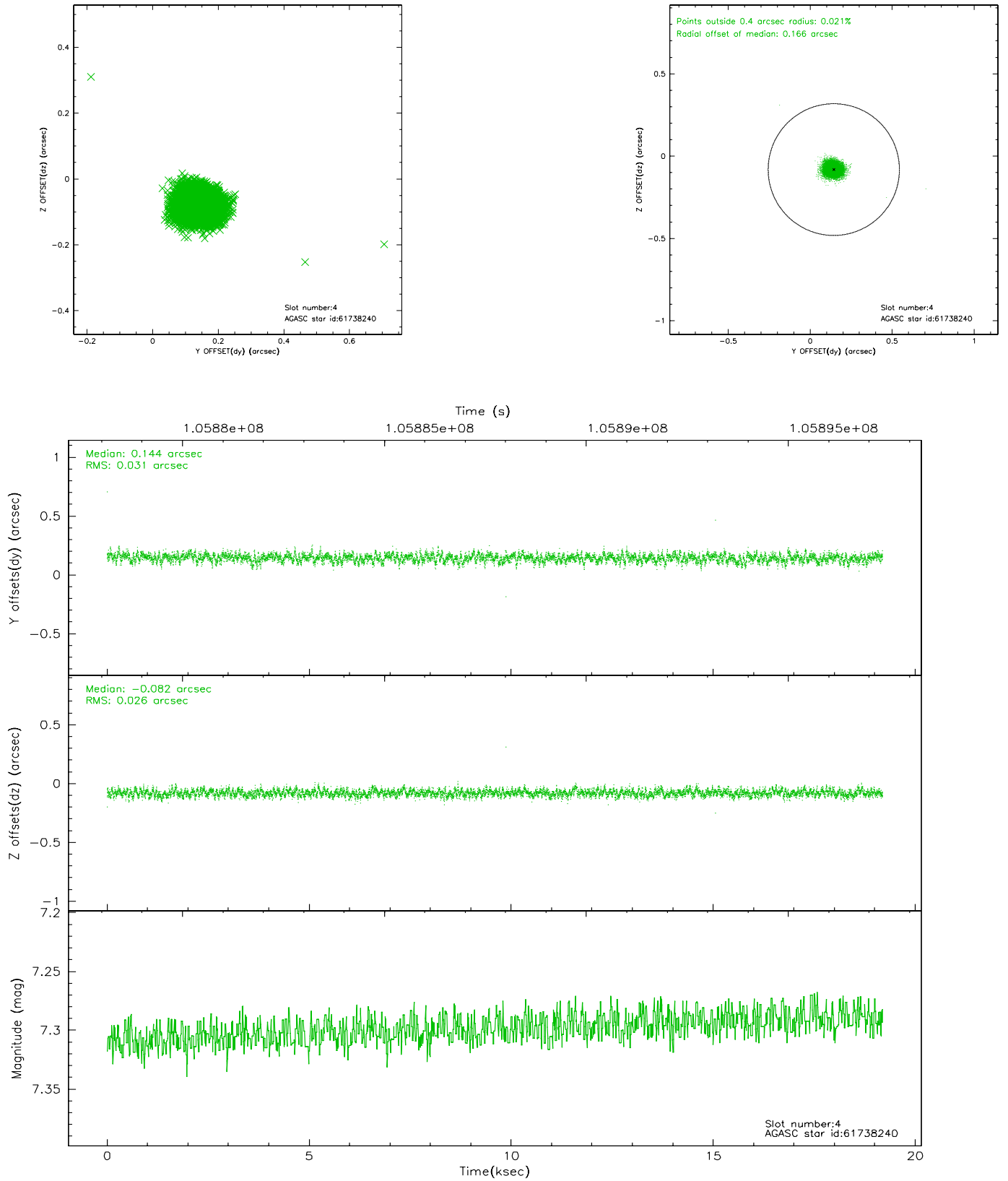
slot	status	id	mag	n_pts	med_dy	med_dz	dr1	dr2	ra	dec	mean_y	mean_z
0	FID	ACIS-S-2	7.10	4681	-0.014	-0.028	0.007	0.011	0.000000	0.000000	-754.55	-1788.71
1	FID	ACIS-S-4	7.20	4679	-0.059	0.014	0.005	0.009	0.000000	0.000000	2158.62	119.55
2	FID	ACIS-S-5	7.23	4682	0.042	0.023	0.007	0.011	0.000000	0.000000	-1807.05	113.51
3	GUIDE	61743800	7.47	9365	-0.034	-0.154	0.059	0.091	287.776811	5.274666	1286.21	249.72
4	GUIDE	61738240	7.30	9364	0.144	-0.082	0.042	0.069	287.996556	4.354861	-2075.01	784.91
5	GUIDE	61745024	7.60	9361	-0.020	0.080	0.048	0.076	288.156168	5.297362	842.71	-1038.16
6	GUIDE	61741304	7.64	9365	-0.136	0.103	0.047	0.074	287.957418	5.377327	1380.72	-489.60
7	GUIDE	61735664	7.81	9363	0.047	0.057	0.054	0.085	288.278990	4.935643	-528.64	-949.13

2.4 Star Slots

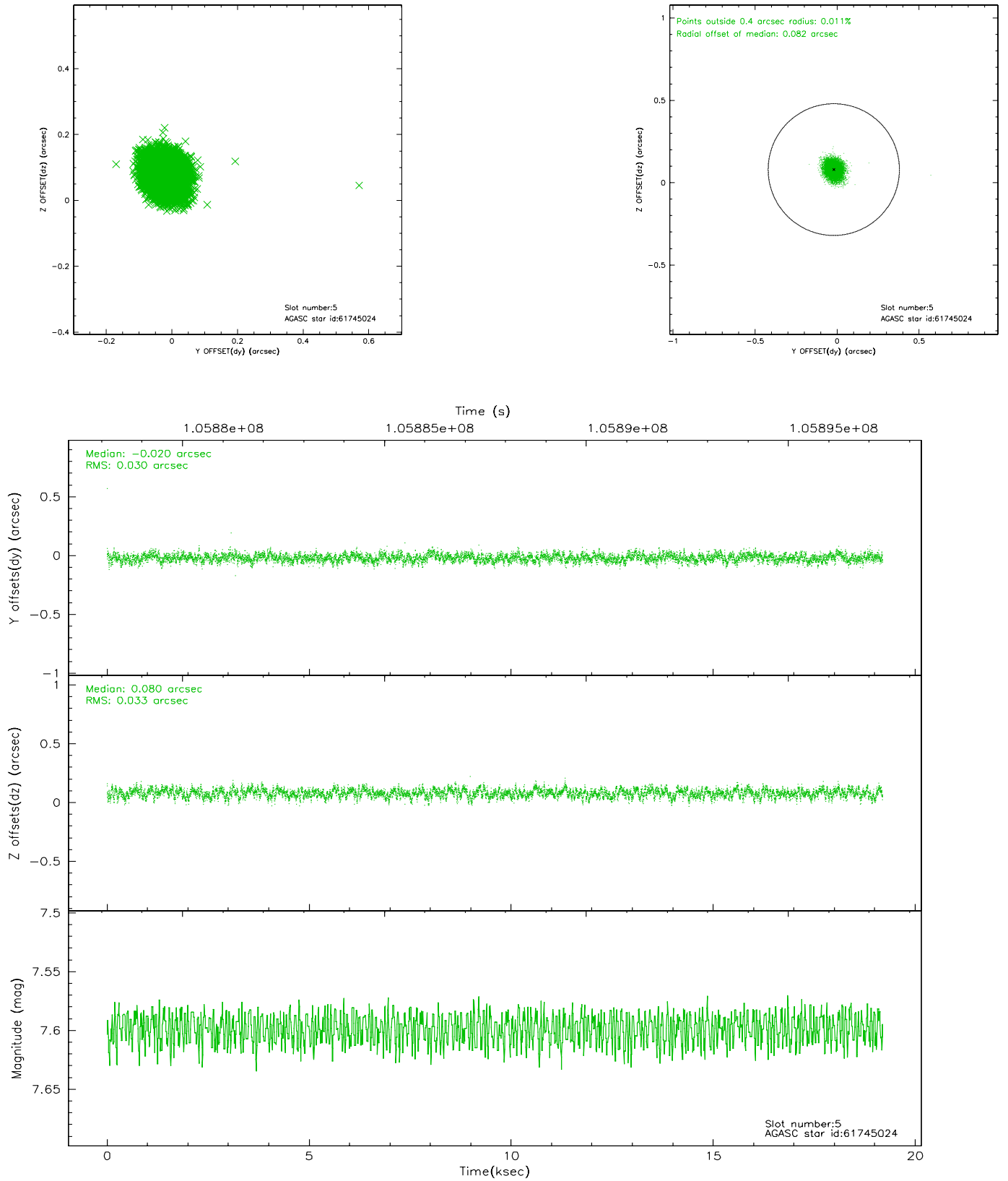
2.4.1 Slot 3



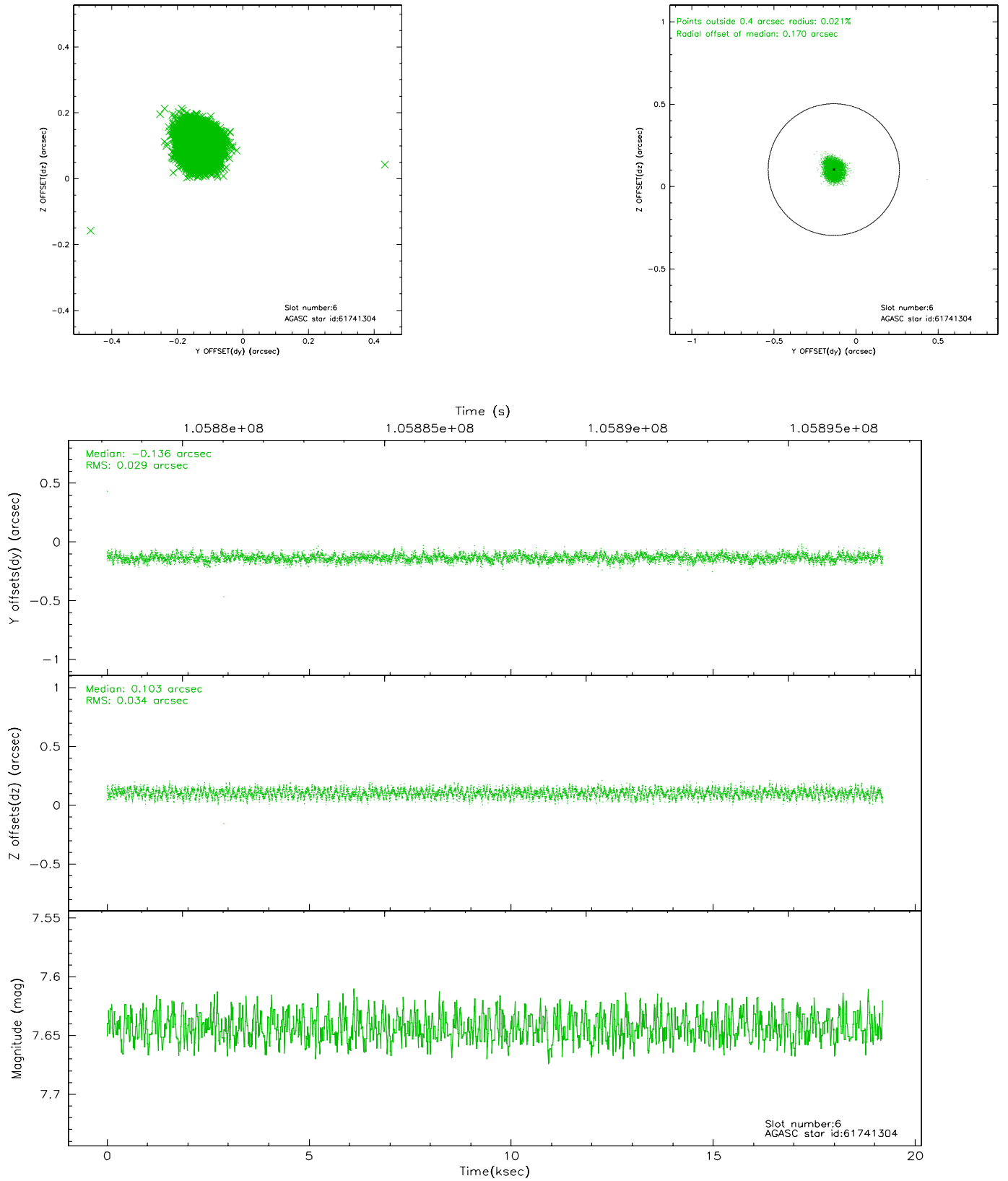
2.4.2 Slot 4



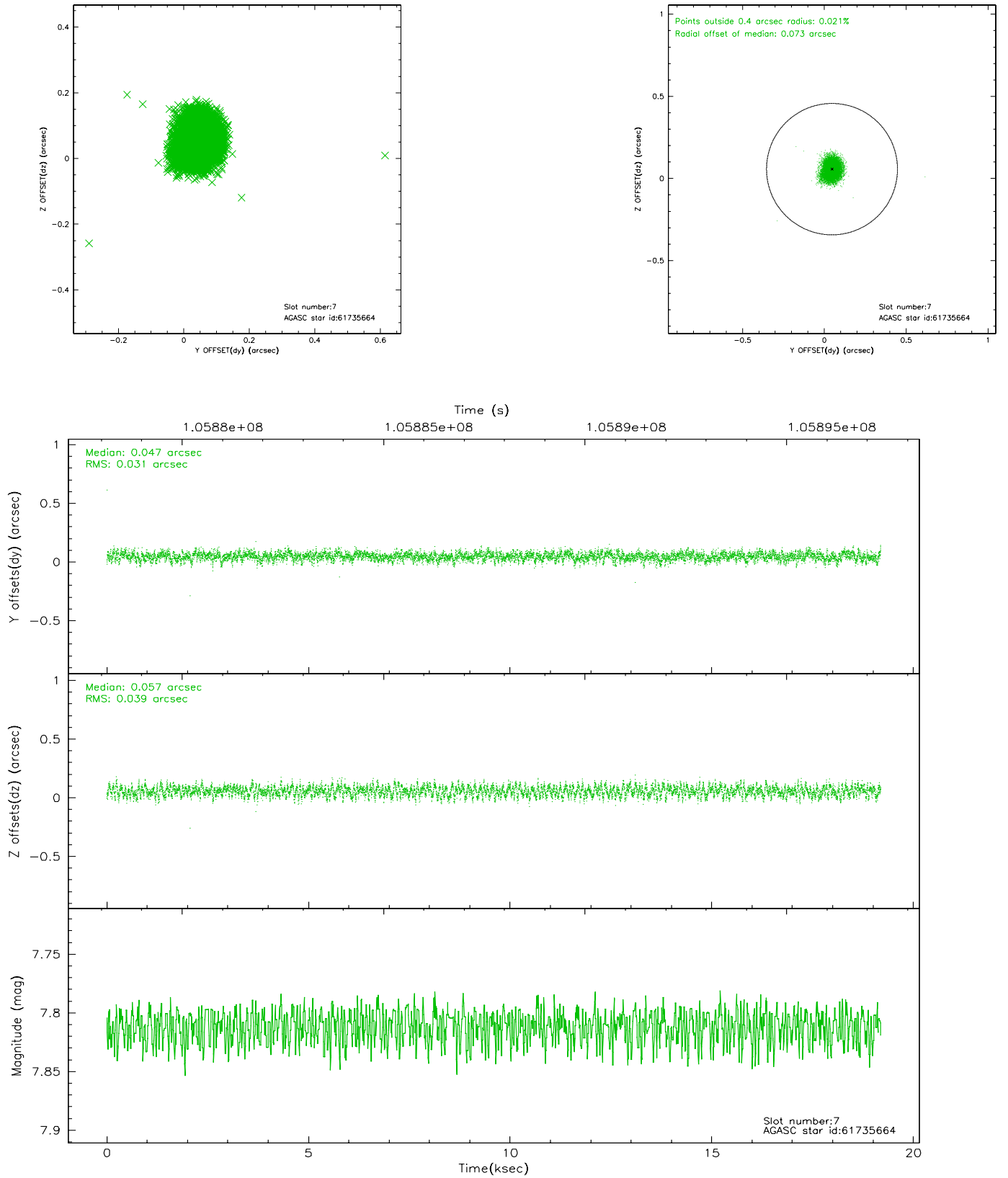
2.4.3 Slot 5



2.4.4 Slot 6

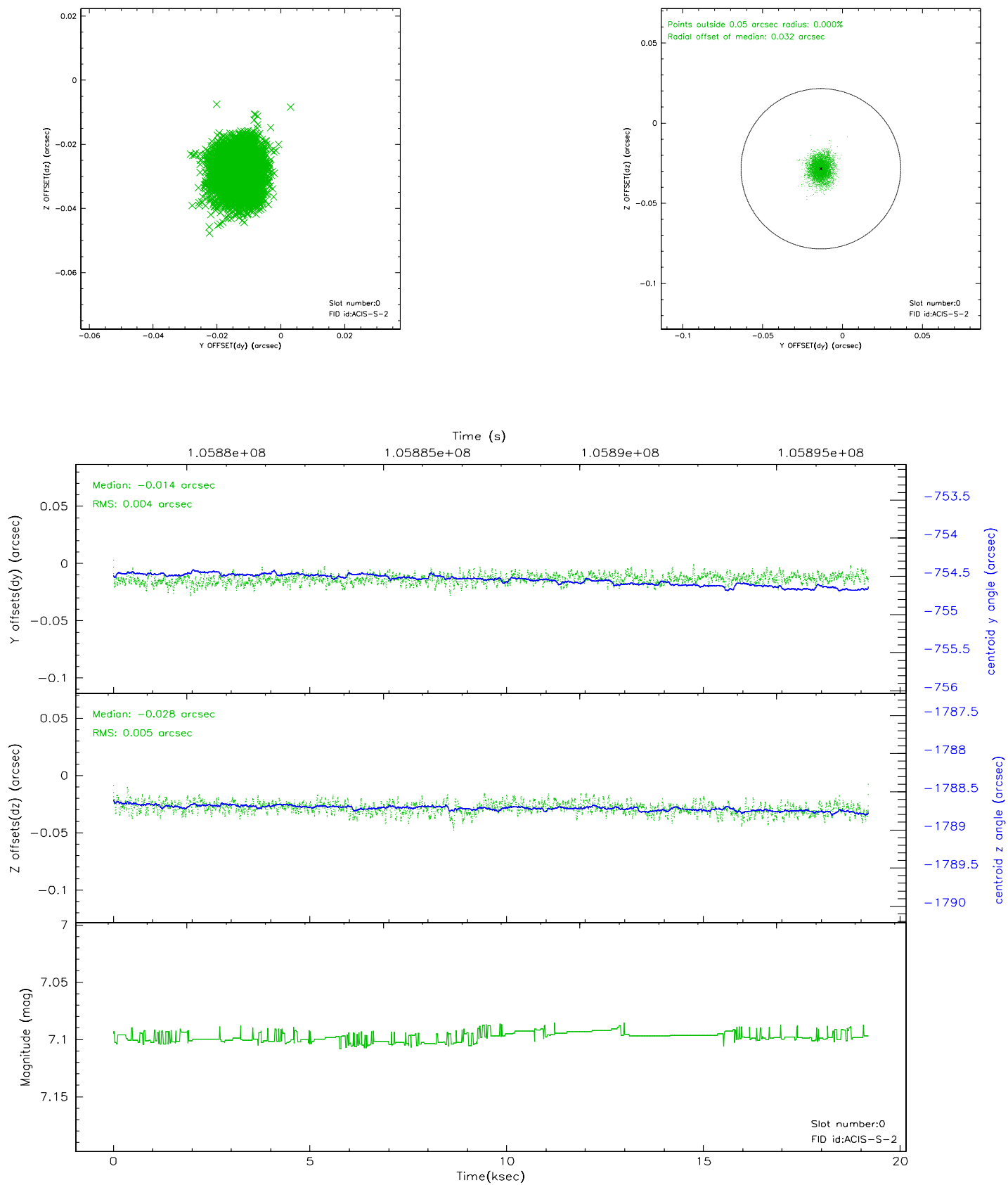


2.4.5 Slot 7

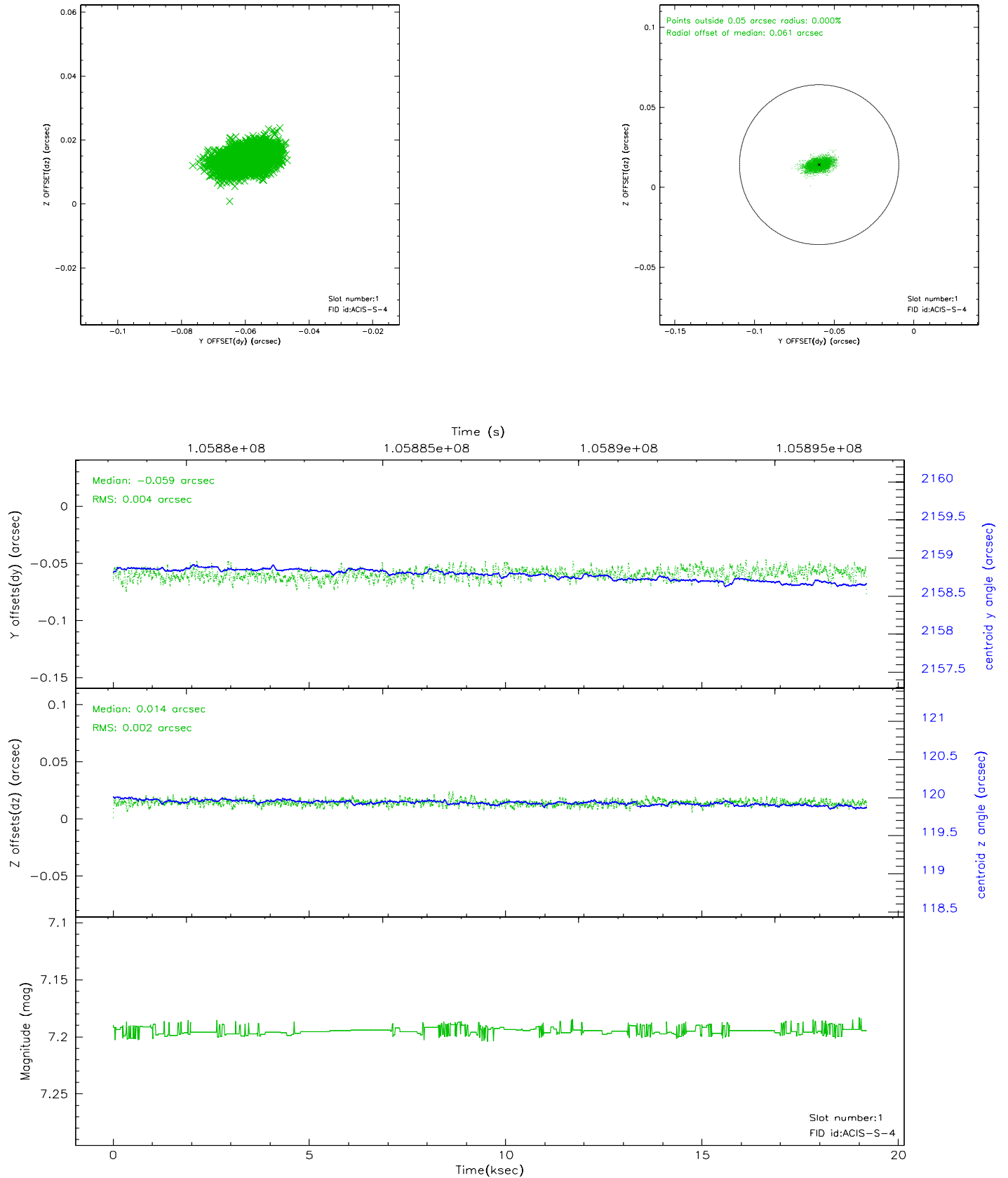


2.5 FID Slots

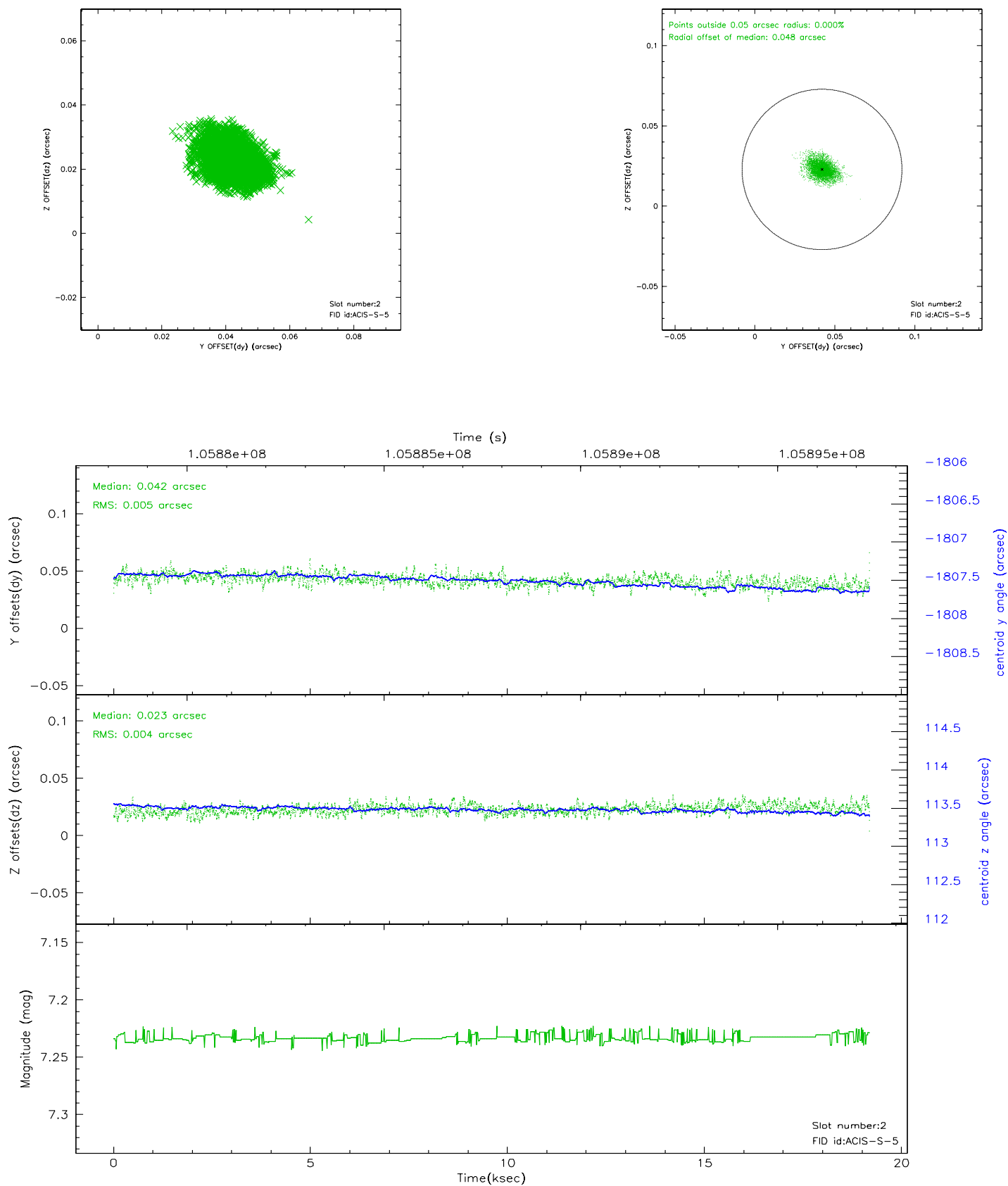
2.5.1 Slot 0



2.5.2 Slot 1



2.5.3 Slot 2

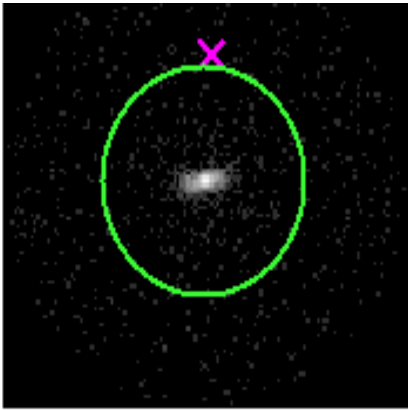


3 Gratings

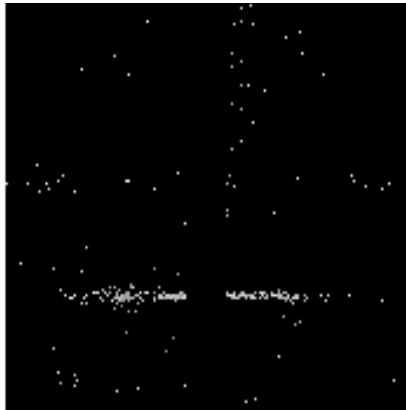
3.1 HEG Arm



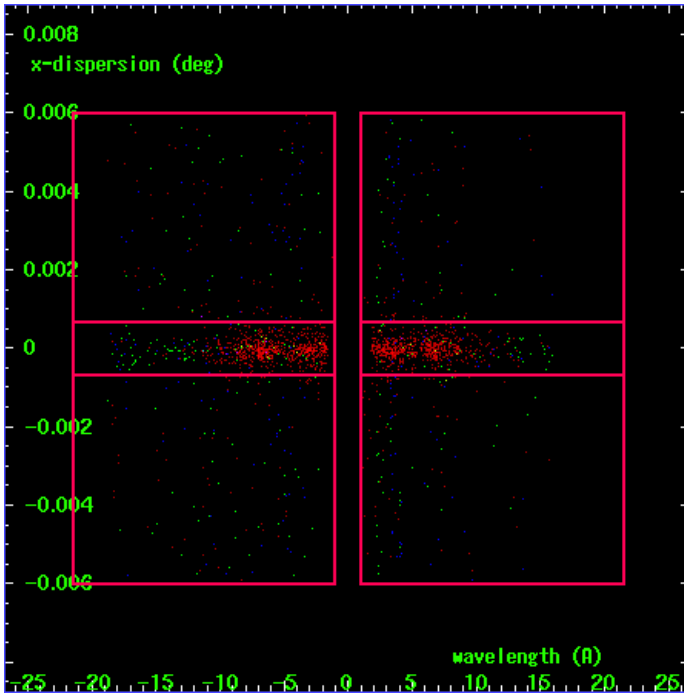
HEG Order Sort 123



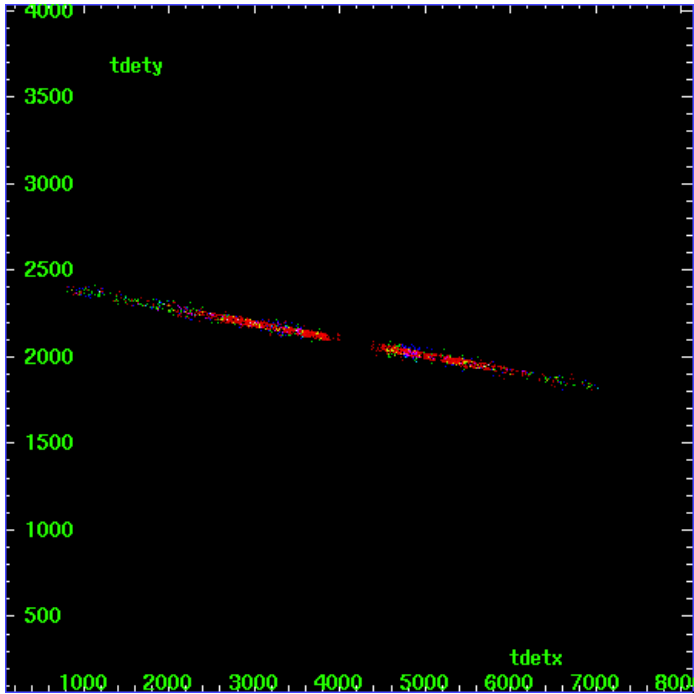
HEG Zero Order



HEG Order Sort ALL

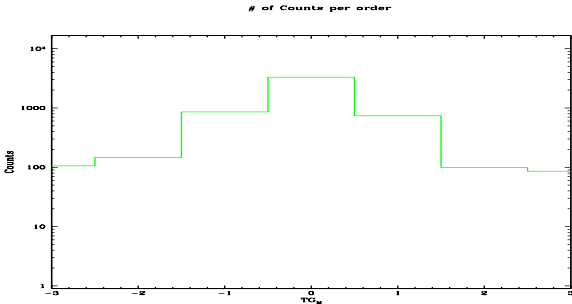


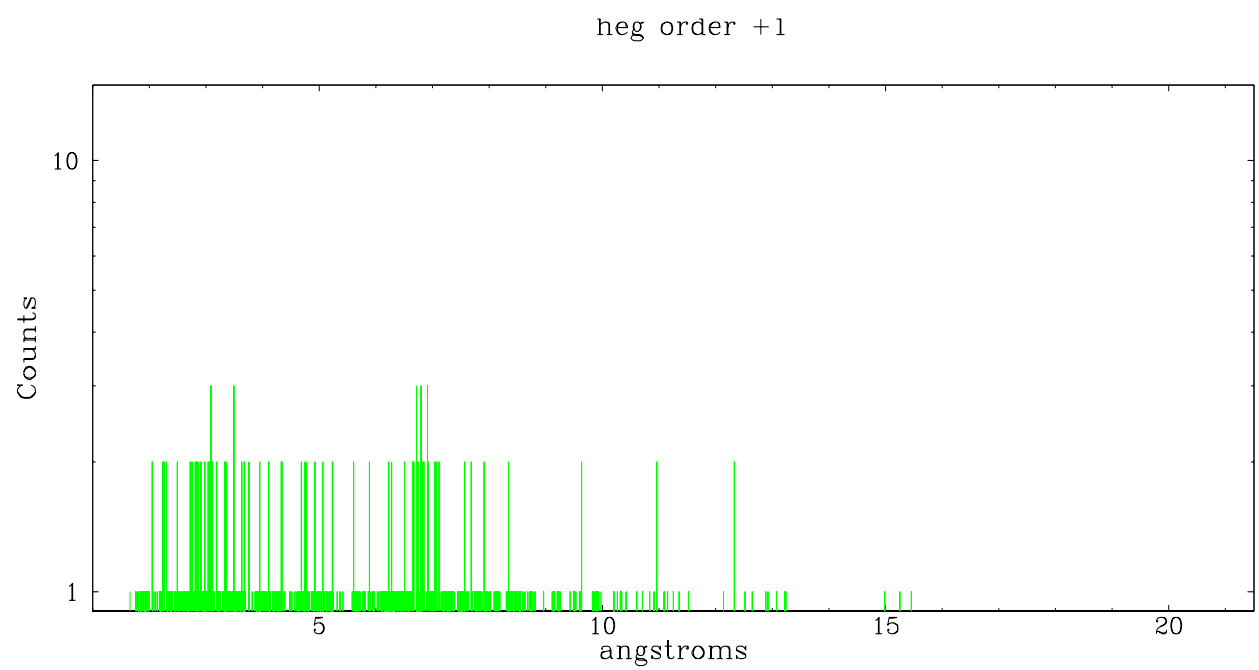
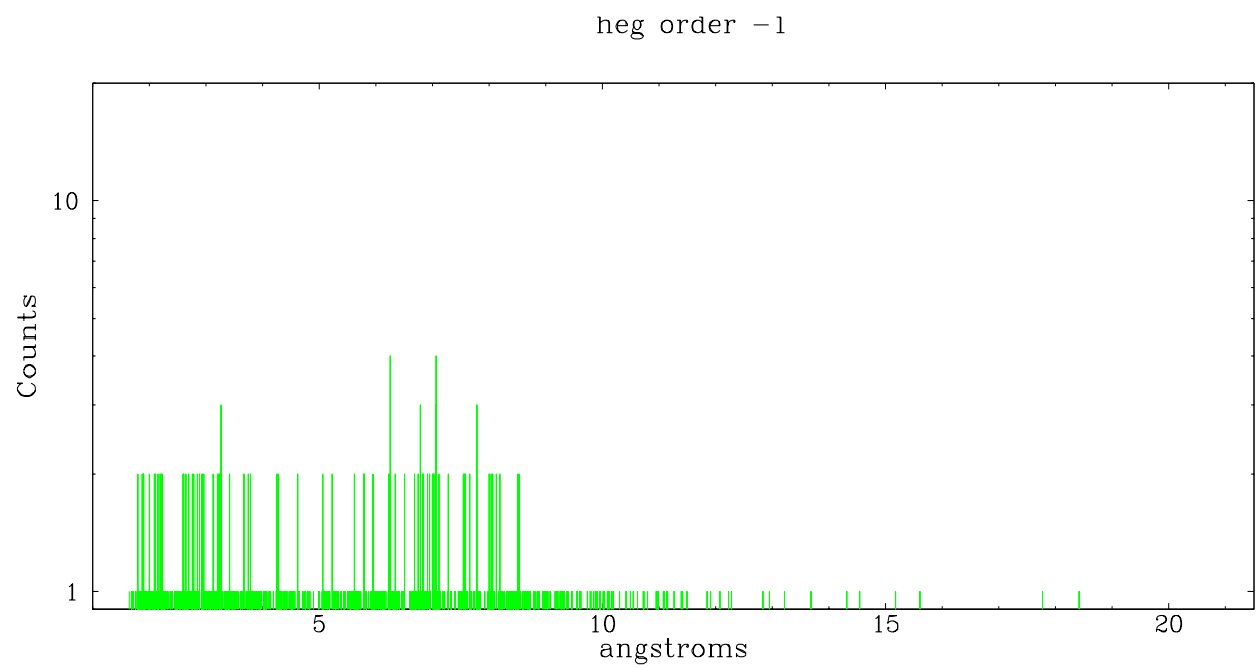
Spot Image HEG



Full Detector HEG

	order -3	order -2	order -1	order 0	order 1	order 2	order 3
Events	106	145	859	3318	736	99	86

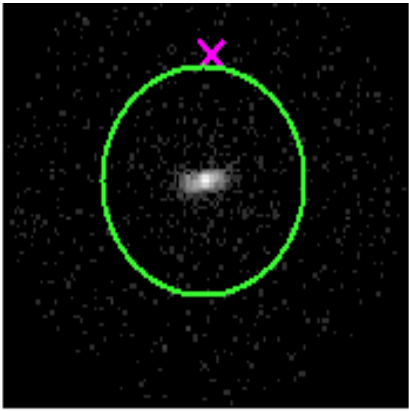




3.2 MEG Arm



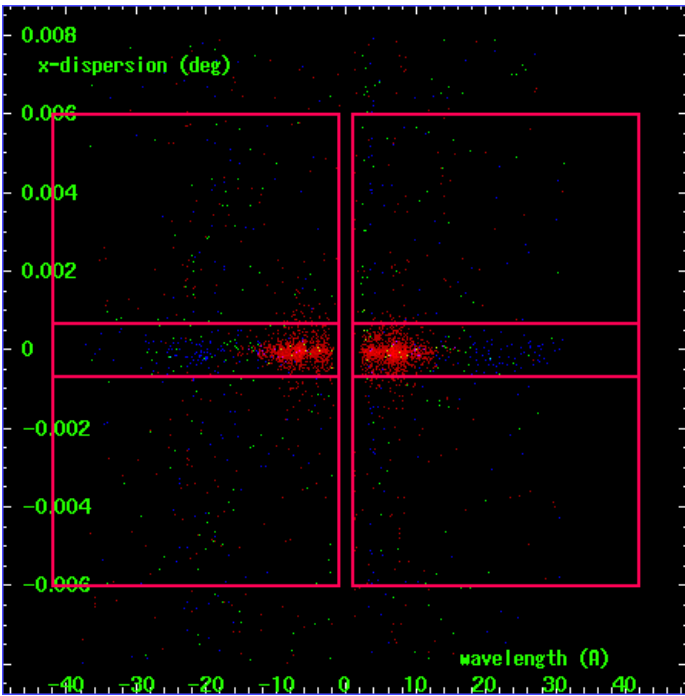
MEG Order Sort 123



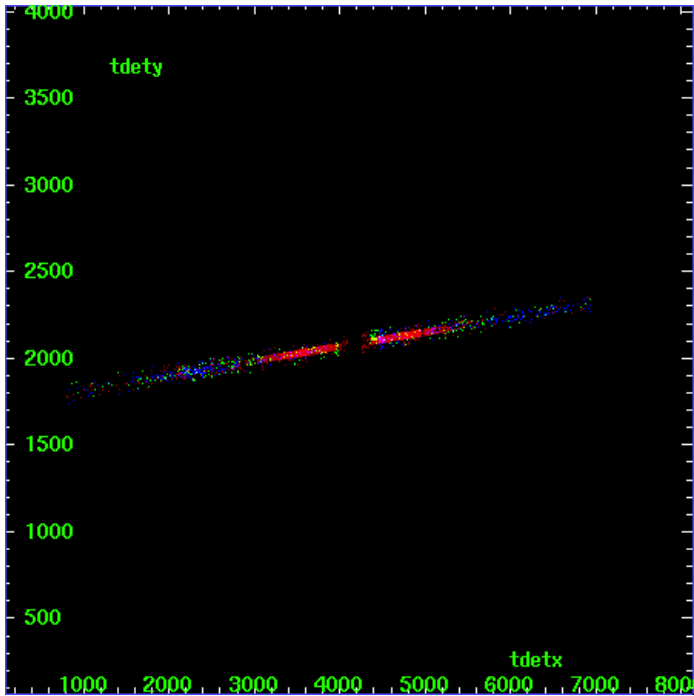
MEG Zero Order



MEG Order Sort ALL

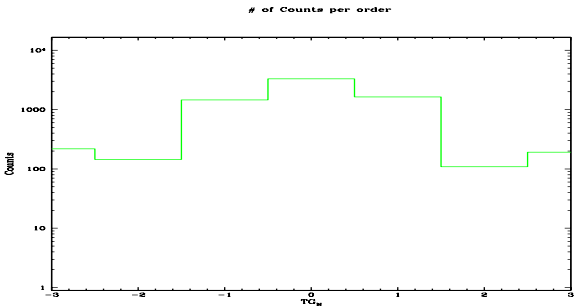


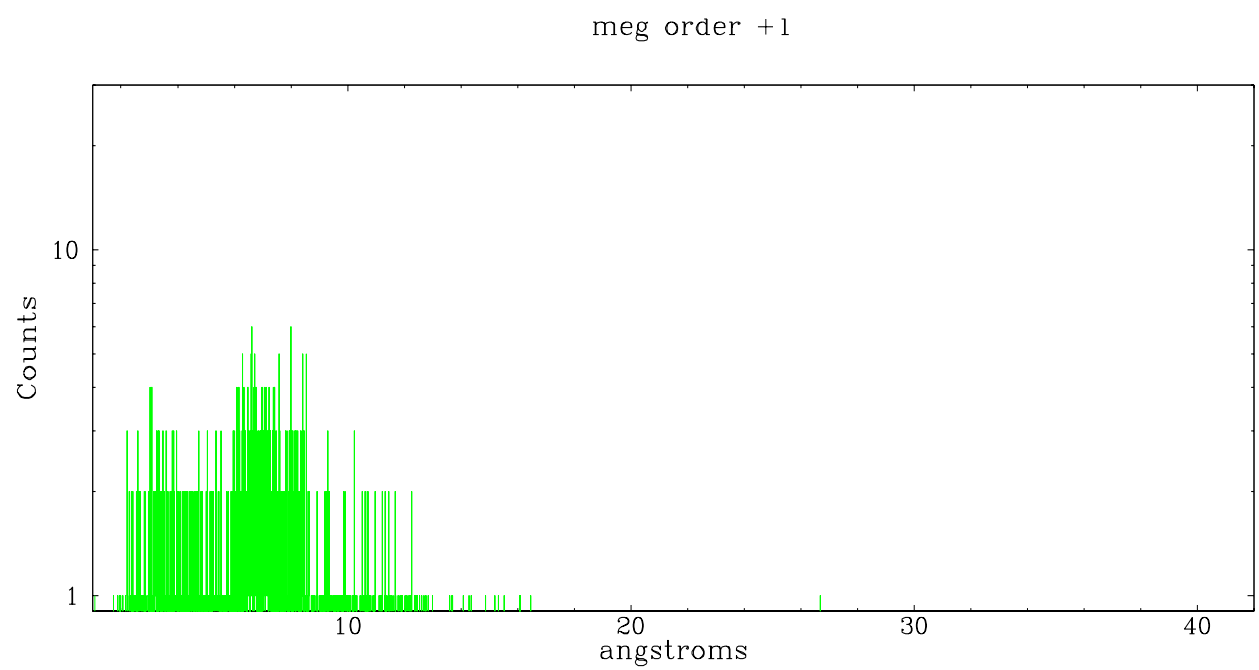
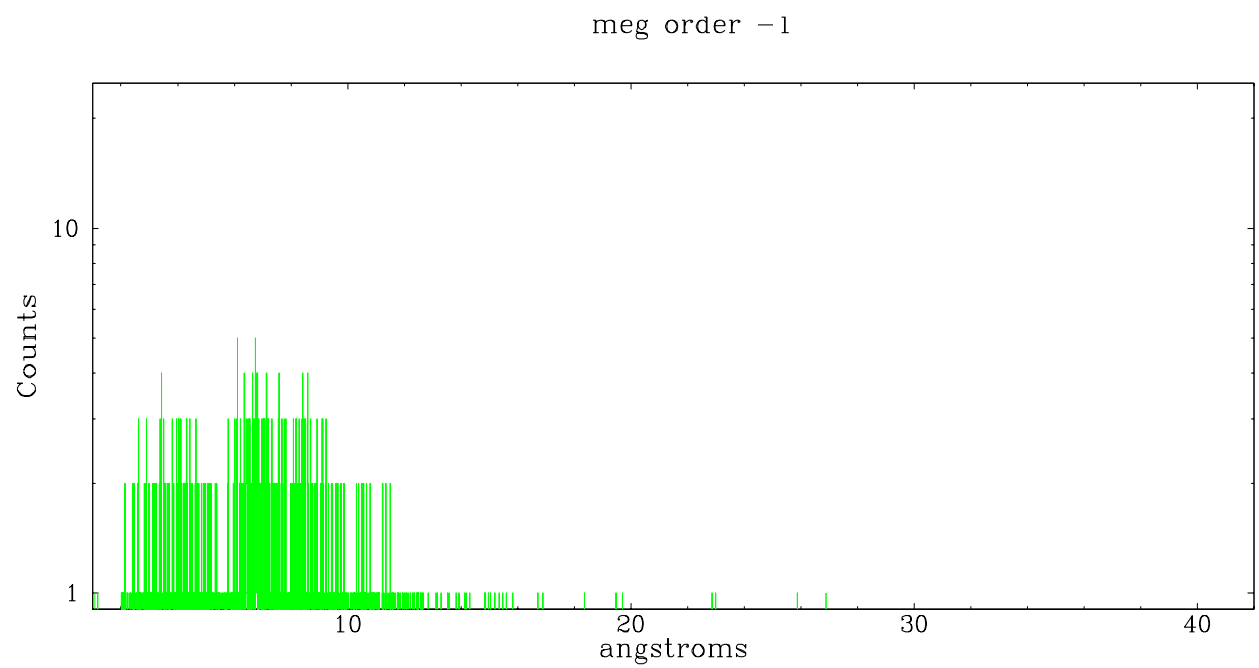
Spot Image MEG



Full Detector MEG

	order -3	order -2	order -1	order 0	order 1	order 2	order 3
Events	219	144	1457	3318	1635	109	192





A Summary

A.1 Status

V&V Scientist	Joy Nichols
V&V Date (YYYY-MM-DD)	2007.01.03
V&V Edition	1
V&V Disposition and Status	OK
V&V Charge Time	18.8

A.2 Comments

Observation acquired during binary phase 0.10-0.15. Source is extended.

Zeroth order position is at or very near the centroid of maximum X-ray brightness.