

V&V Reference Report

L2 ASCDS Version : 7.6.9

Observation 1917 - L2 Version 001
Chandra X-Ray Center

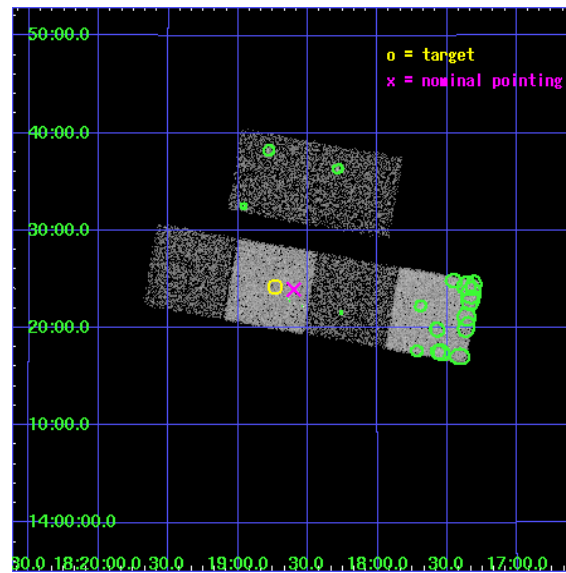
L2 Processing Date : Dec 11 2006

Contents

1	Front	2
2	OBI	3
2.1	OBI	3
2.1.1	Images	3
2.1.2	Bias	3
2.1.3	Parameters	4
2.1.4	Events	4
2.2	Compared Parameters	5
2.3	Aspect	6
2.4	Star Slots	9
2.4.1	Slot 3	9
2.4.2	Slot 4	10
2.4.3	Slot 5	11
2.4.4	Slot 6	12
2.4.5	Slot 7	13
2.5	FID Slots	14
2.5.1	Slot 0	14
2.5.2	Slot 1	15
2.5.3	Slot 2	16
3	Point Sources	17
A	Summary	18
A.1	Status	18
A.2	Comments	18

1 Front

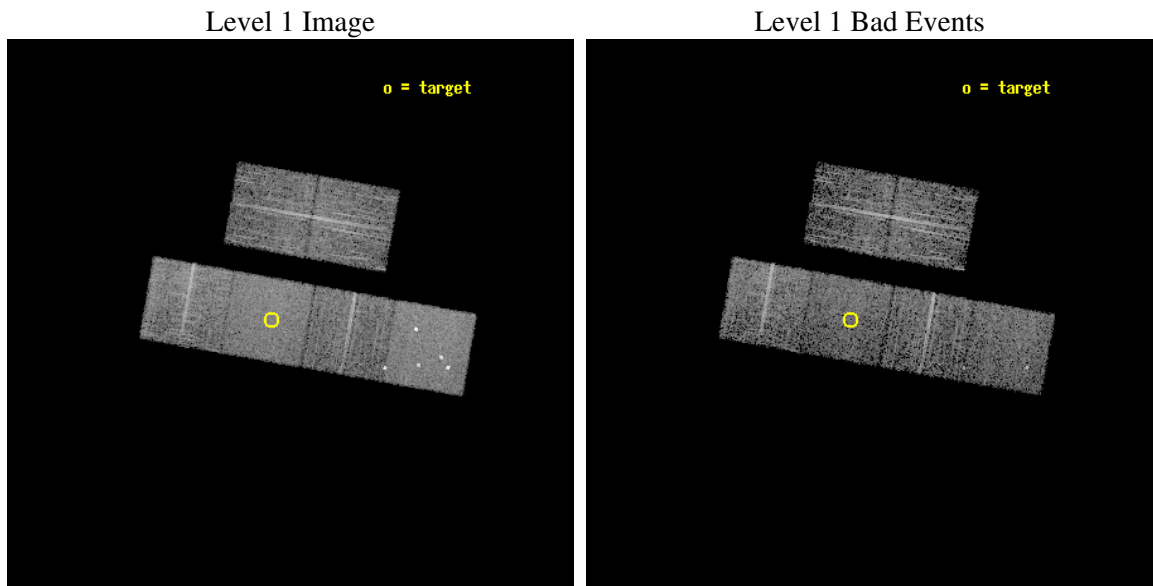
seq_num	400130
obs_id	1917
title	X-RAY BURSTERS WITH LOW PERSISTENT X-RAY LUMINOSITIES
observer	PROF FRANK VERBUNT
object	SAX J1818.7+1424
dtcycle	0
cycle	P
ra_targ	274.683333
dec_targ	14.403333
ra_nom	274.65001095986
dec_nom	14.39936577301
roll_nom	189.99391908452
revision	2
ontime	4755.2000044286
livetime	4694.9867987349
ontime2	4755.2000044286
ontime3	4755.2000044286
ontime5	4755.2000044286
ontime6	4755.2000044286
ontime7	4755.2000044286
ontime8	4751.9590341747
l2events	46151



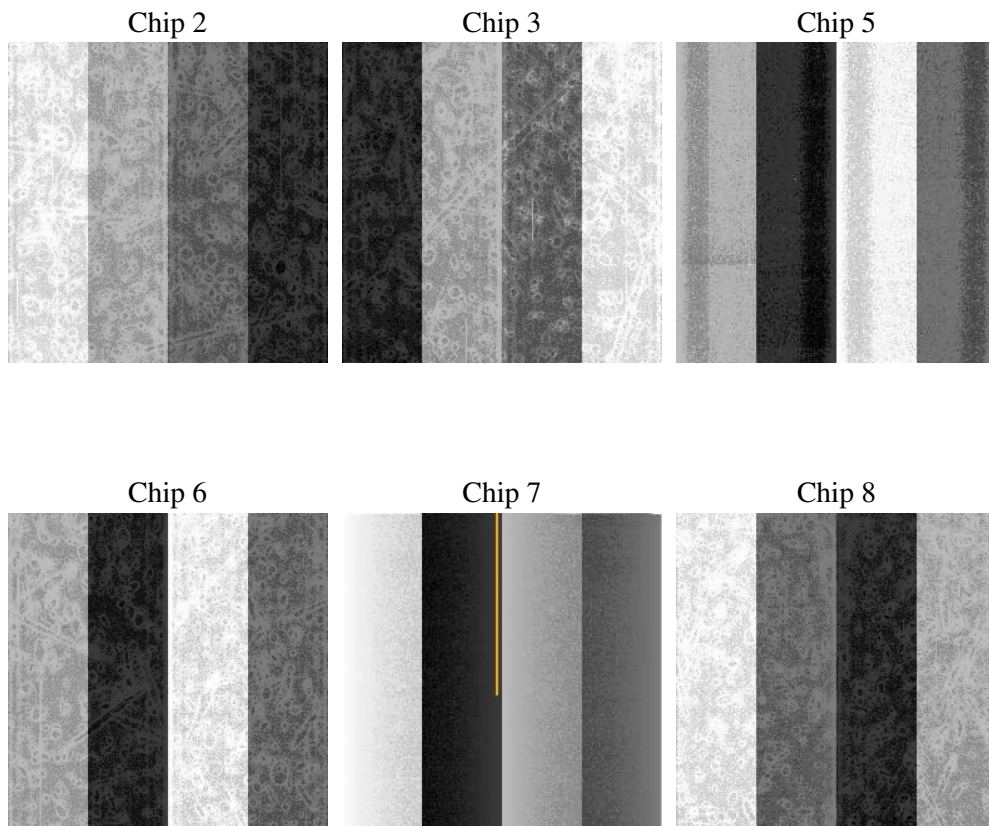
2 OBI

2.1 OBI

2.1.1 Images



2.1.2 Bias



2.1.3 Parameters

obi_num	0
ascdsver	7.6.9
caldsver	3.2.4
date	2006-12-11T11:59:17
revision	2

sched_exp_time	5000.000000
ontime	4761.0341757983
ontime2	4761.0341757983
ontime3	4761.0341757983
ontime5	4761.0341757983
ontime6	4761.0341757983
ontime7	4761.0341757983
ontime8	4757.7931158543
l1events	229290

2.1.4 Events

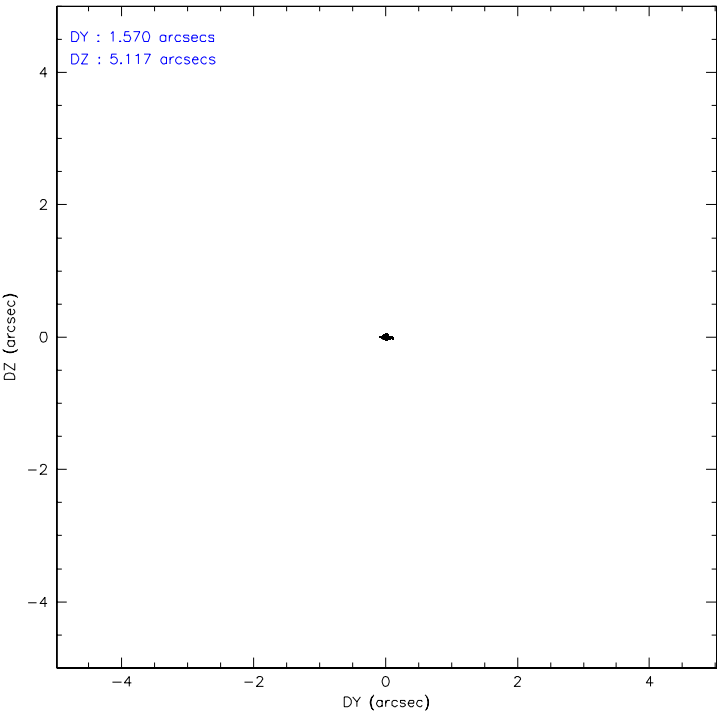
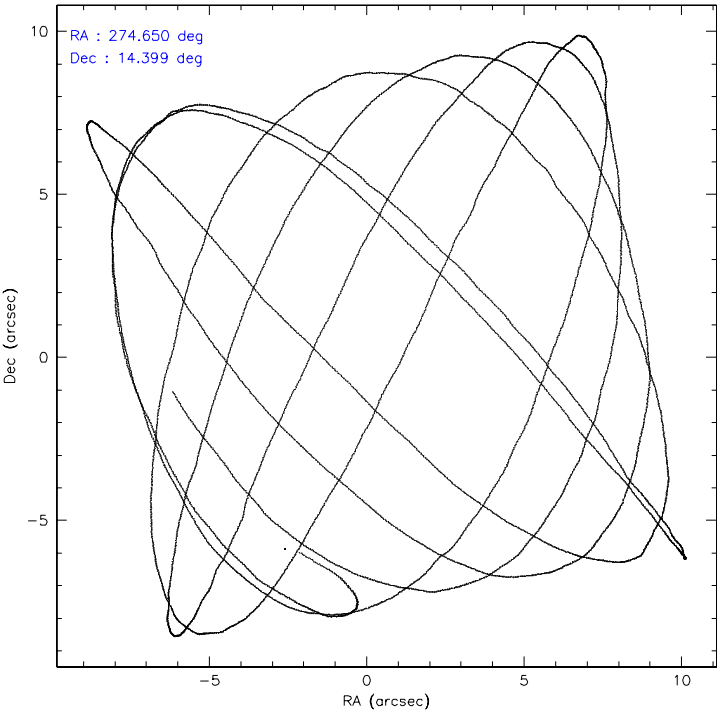
	ccd 2	ccd 3	ccd 5	ccd 6	ccd 7	ccd 8
level 1 events	34991	31056	48255	31636	40734	42618
rejected events	31442	27431	25298	27936	25209	34599
rejected %	89%	88%	52%	88%	61%	81%

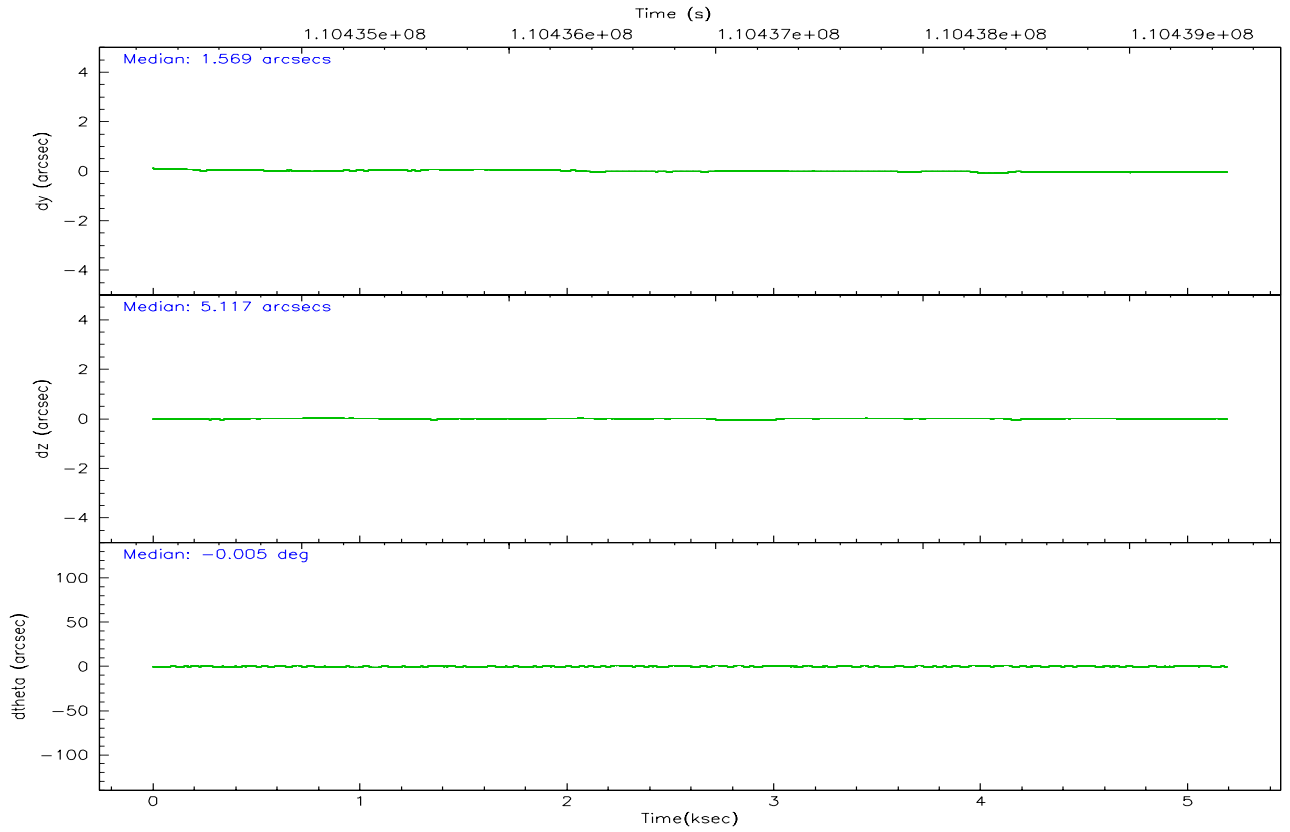
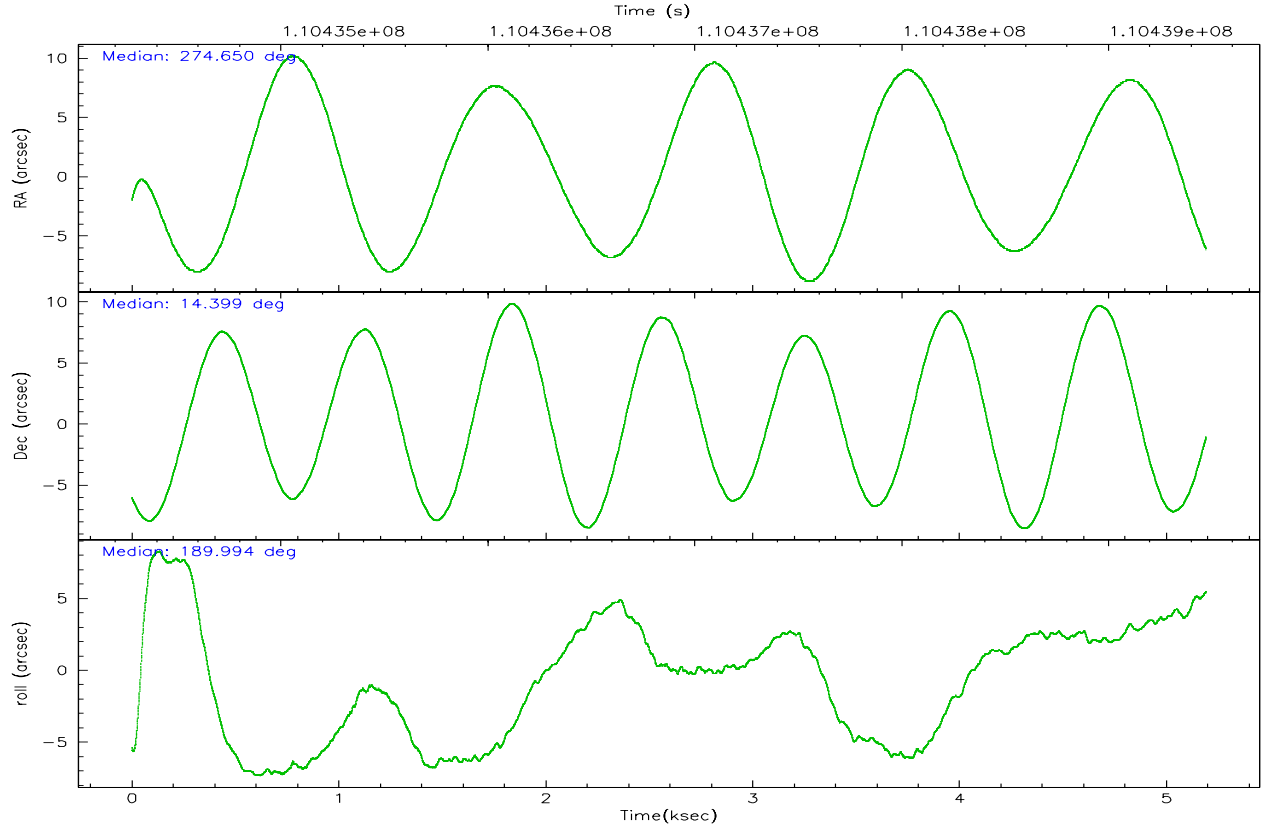
	ccd 2	ccd 3	ccd 5	ccd 6	ccd 7	ccd 8
grade 0 events	1446	1550	4527	1555	1007	2504
	4%	4%	9%	4%	2%	5%
grade 1 events	22	11	378	15	22	28
	0%	0%	0%	0%	0%	0%
grade 2 events	824	709	6368	715	3801	1769
	2%	2%	13%	2%	9%	4%
grade 3 events	328	375	479	394	874	864
	0%	1%	0%	1%	2%	2%
grade 4 events	329	339	491	337	891	782
	0%	1%	1%	1%	2%	1%
grade 5 events	1098	1179	2215	1347	2766	1646
	3%	3%	4%	4%	6%	3%
grade 6 events	627	656	11123	705	8965	2102
	1%	2%	23%	2%	22%	4%
grade 7 events	30317	26237	22674	26568	22408	32923
	86%	84%	46%	83%	55%	77%

2.2 Compared Parameters

Parameter	Planned	Actual	Parameter	Planned	Actual
Instrument	ACIS	ACIS	Obspar format version number	6	6
Detector	ACIS-235678	ACIS-235678	Obspar file type	PREDICTED	ACTUAL
Grating	NONE	NONE	Obspar update status	NONE	UPDATED
Data mode	FAINT	FAINT	Number of optional ACIS chips dropped	0	0
Observation mode	POINTING	POINTING	On-chip summing requested	N	N
Pointing RA	274.671416	274.6500109598625	Subarray requested	NONE	NONE
Pointing Dec	14.417231	14.39936577300973	Alternating exposures requested	N	N
Pointing Roll	189.831993	189.9939190845225	Primary exposure time	0.000000	3.2
SIM focus pos (mm)	-0.684267	-0.6828225247311905			
SIM defocus (mm)	0	0.001444936568705701			
SIM translation stage pos (mm)	-190.132523	-190.1400660498719			
SIM translation stage offset (mm)	0	0.00754346686406393			
Observation start time	110434472.184000	110433770.38561			
Observation start date	2001-07-02T04:13:28	2001-07-02T04:02:50			
Observation end time	110439472.184000	110440195.59836			
Observation end date	2001-07-02T05:36:48	2001-07-02T05:49:55			
Read mode	TIMED	TIMED			

2.3 Aspect



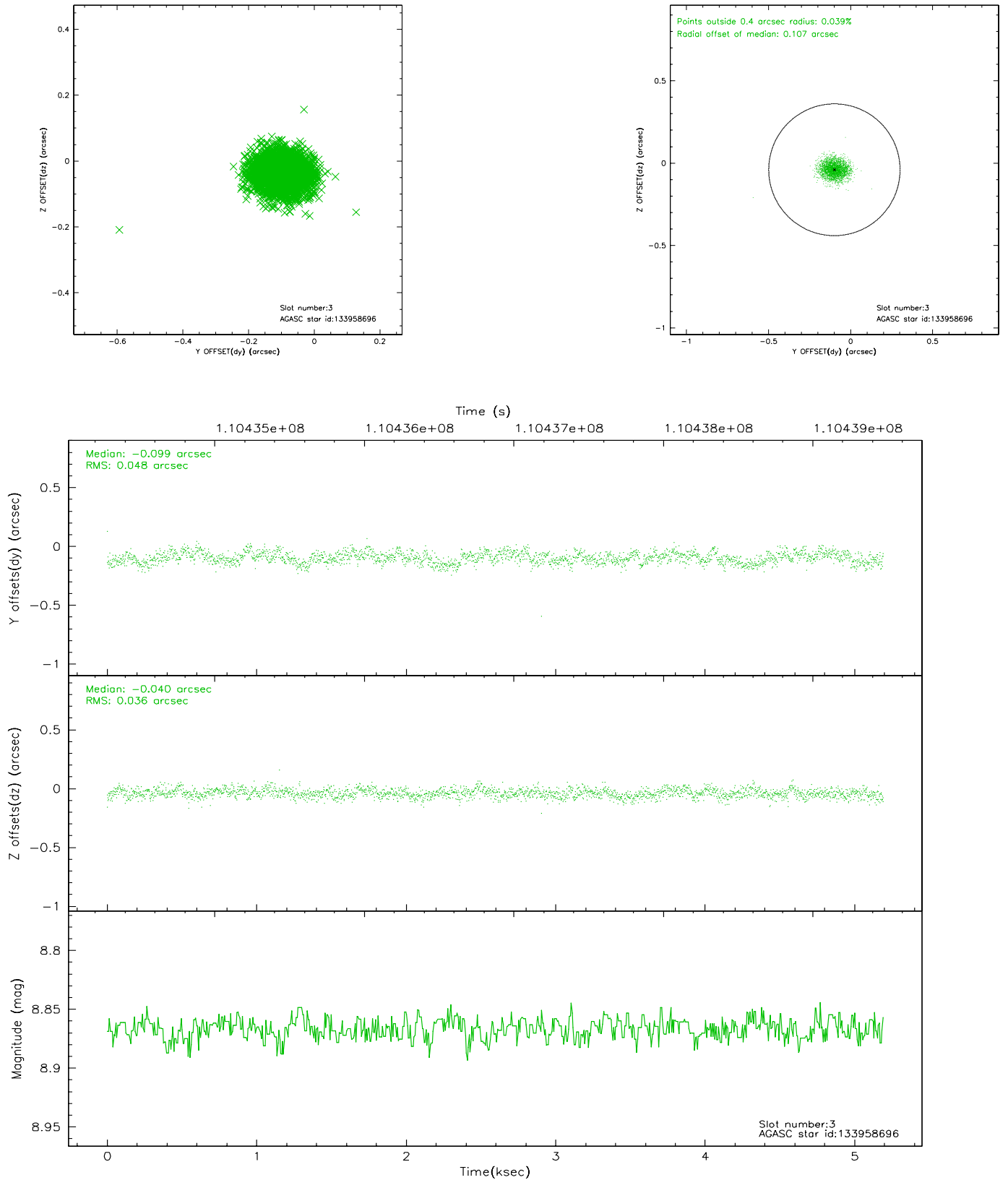


Slot Statistics

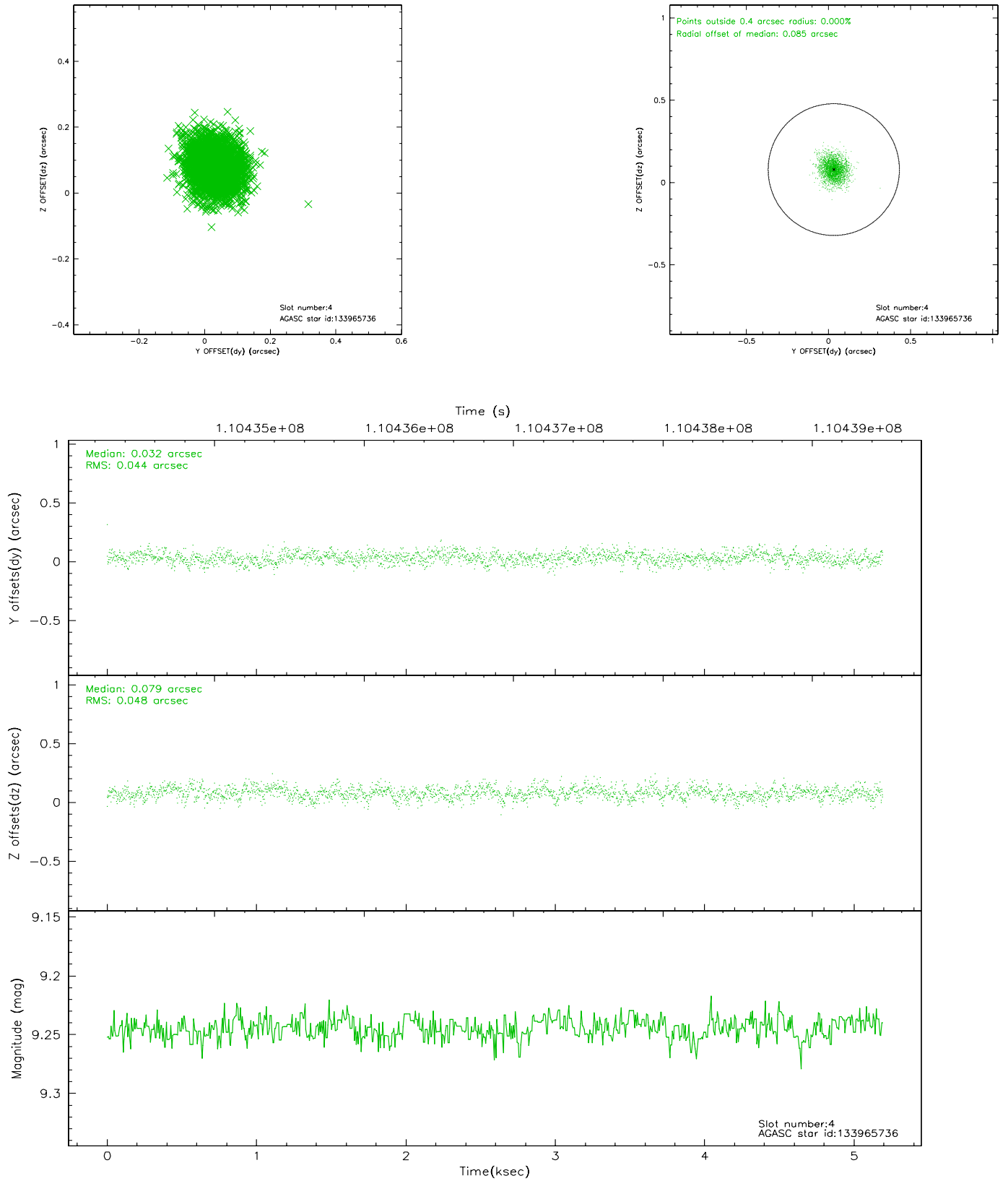
slot	status	id	mag	n_pts	med_dy	med_dz	dr1	dr2	ra	dec	mean_y	mean_z
0	FID	ACIS-S-2	7.12	1267	-0.029	0.022	0.006	0.010	0.000000	0.000000	-754.17	-1726.23
1	FID	ACIS-S-4	7.20	1267	-0.074	0.008	0.005	0.009	0.000000	0.000000	2158.50	181.10
2	FID	ACIS-S-5	7.24	1267	0.071	-0.021	0.006	0.011	0.000000	0.000000	-1805.45	175.99
3	GUIDE	133958696	8.87	2532	-0.099	-0.040	0.064	0.102	274.232754	14.015868	1755.89	1160.49
4	GUIDE	133965736	9.24	2534	0.032	0.079	0.070	0.115	275.228127	14.715430	-2093.16	-728.68
5	GUIDE	133959032	9.51	2532	0.069	0.001	0.083	0.139	274.438600	14.581572	697.20	-722.23
6	GUIDE	133966008	9.43	2532	0.054	-0.001	0.093	0.147	275.203460	14.869602	-2102.40	-1291.08
7	GUIDE	133961952	9.46	2531	-0.056	-0.038	0.091	0.149	274.271950	14.198758	1506.70	535.04

2.4 Star Slots

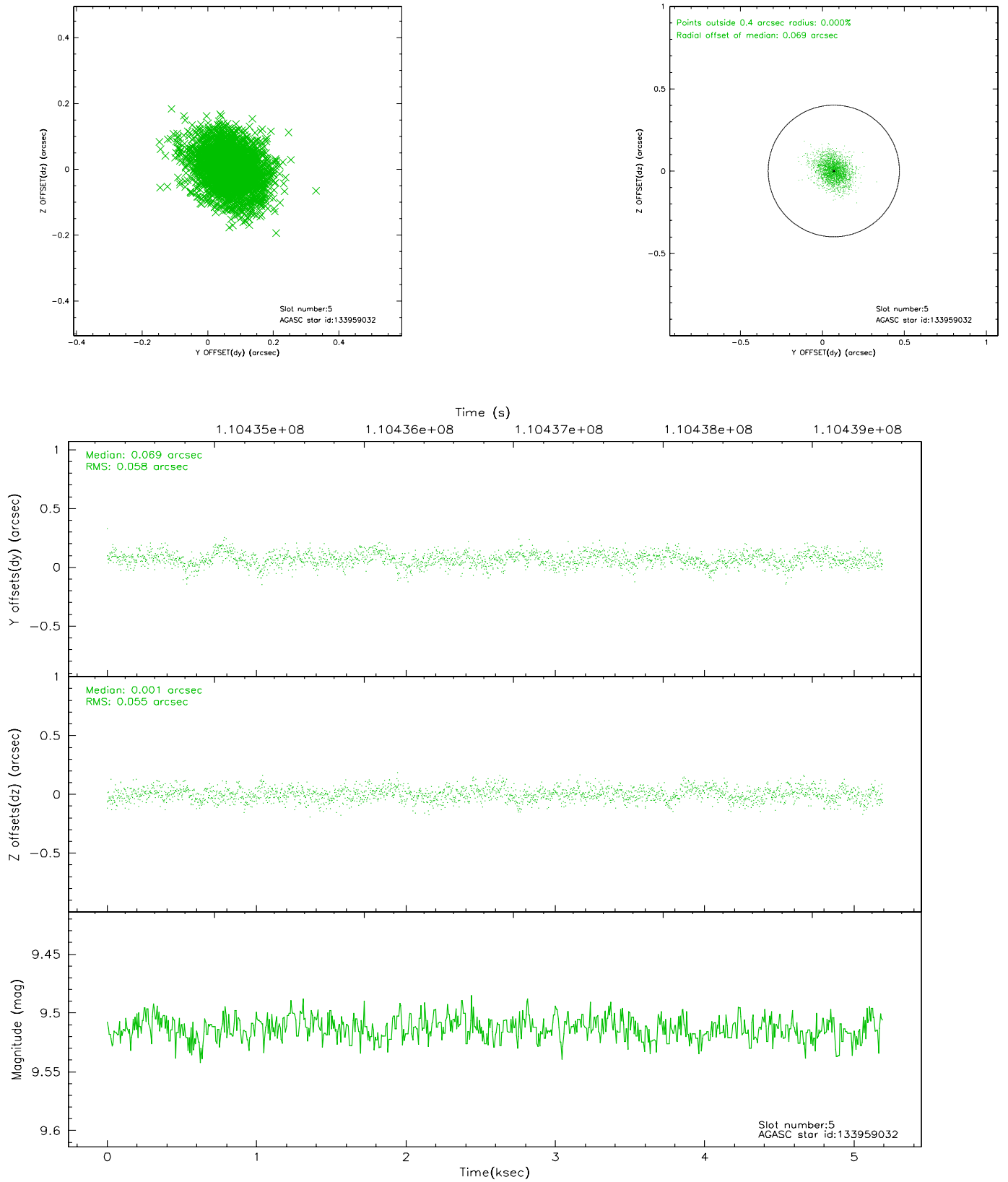
2.4.1 Slot 3



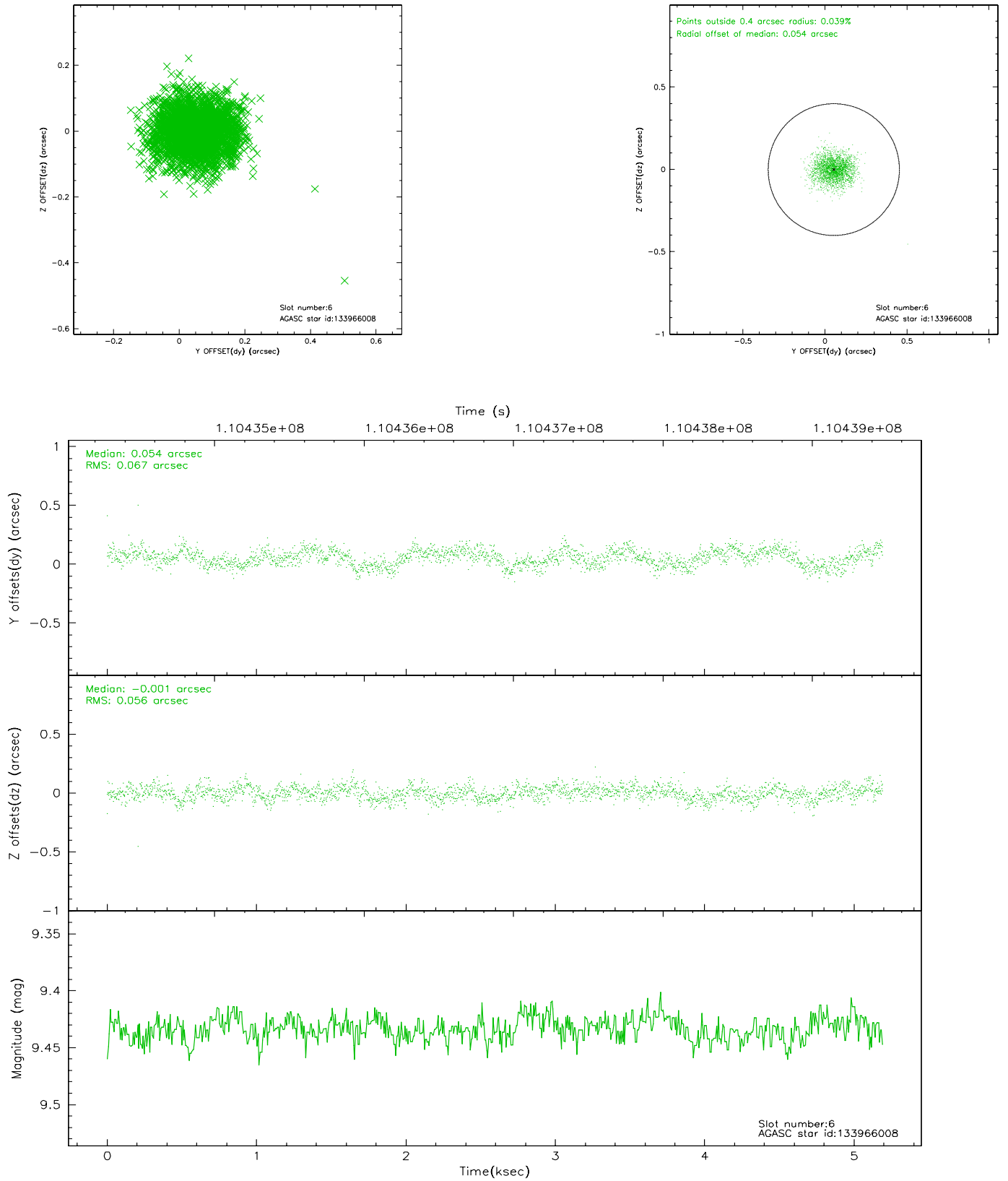
2.4.2 Slot 4



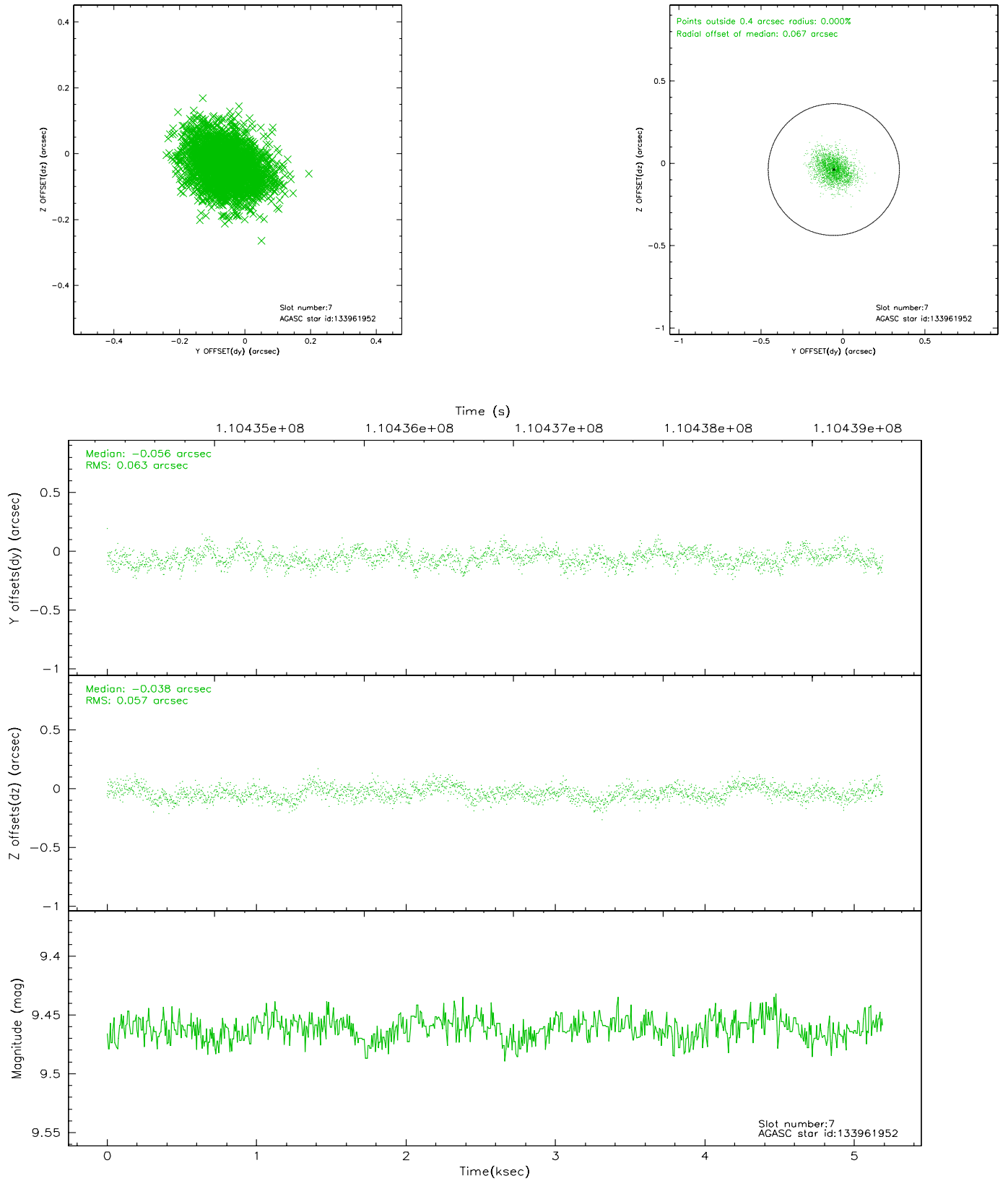
2.4.3 Slot 5



2.4.4 Slot 6

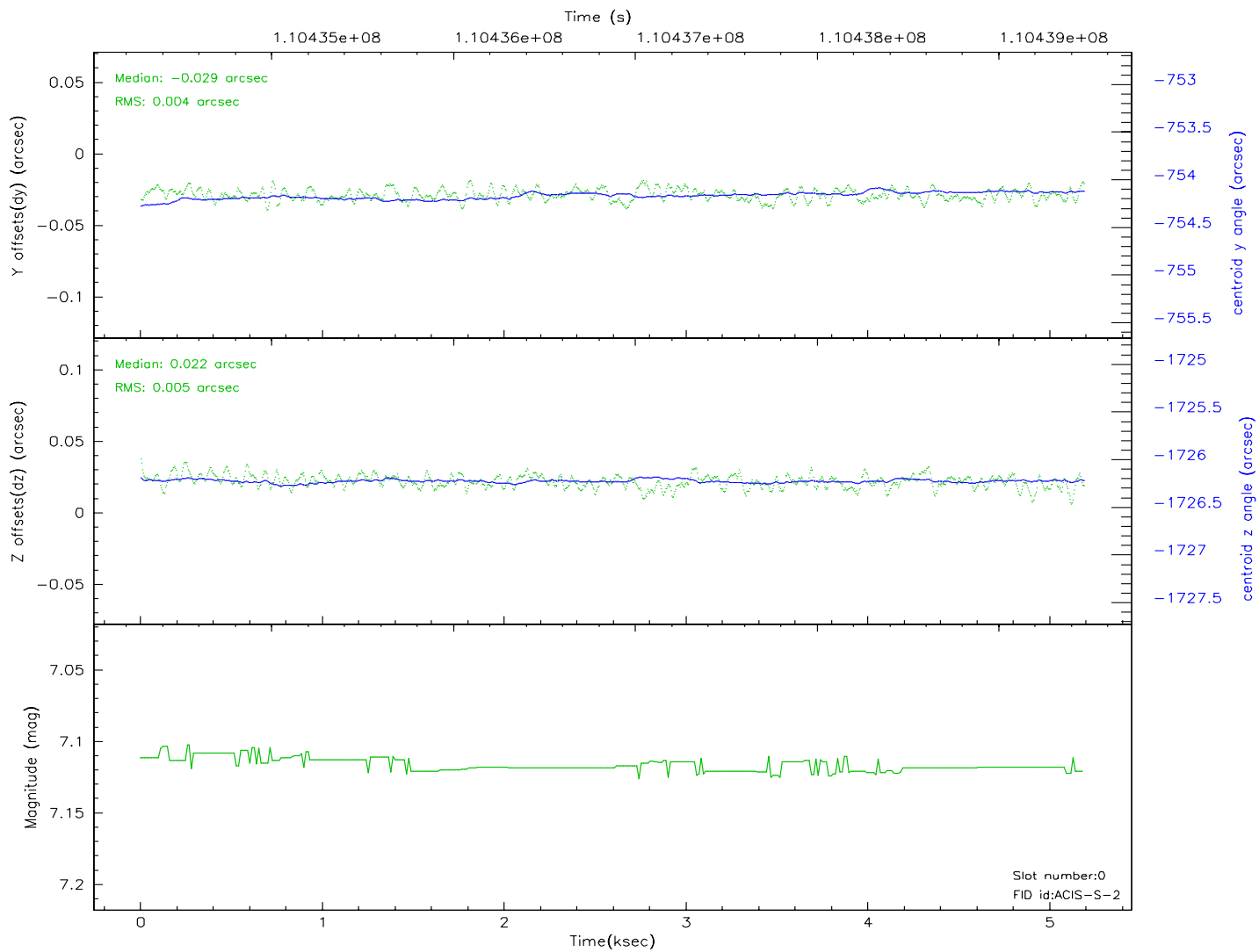
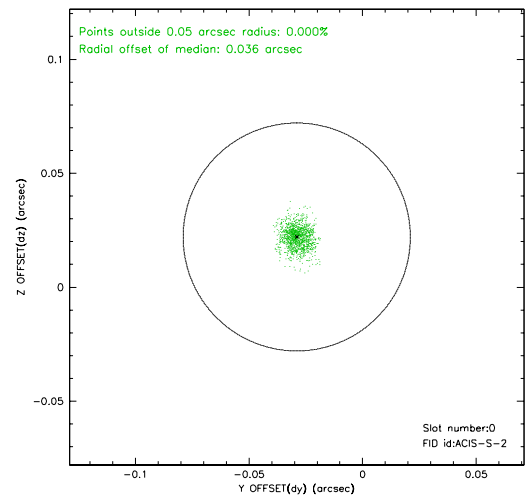
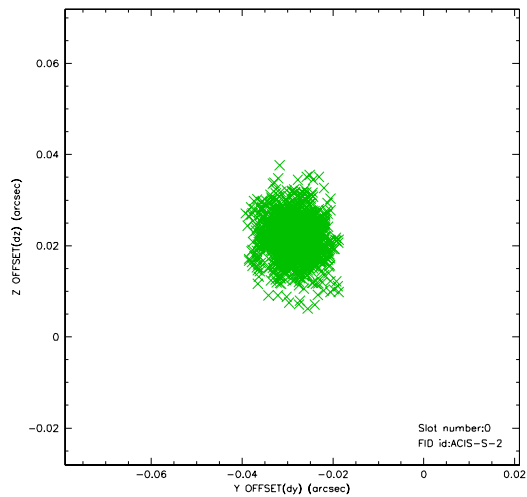


2.4.5 Slot 7

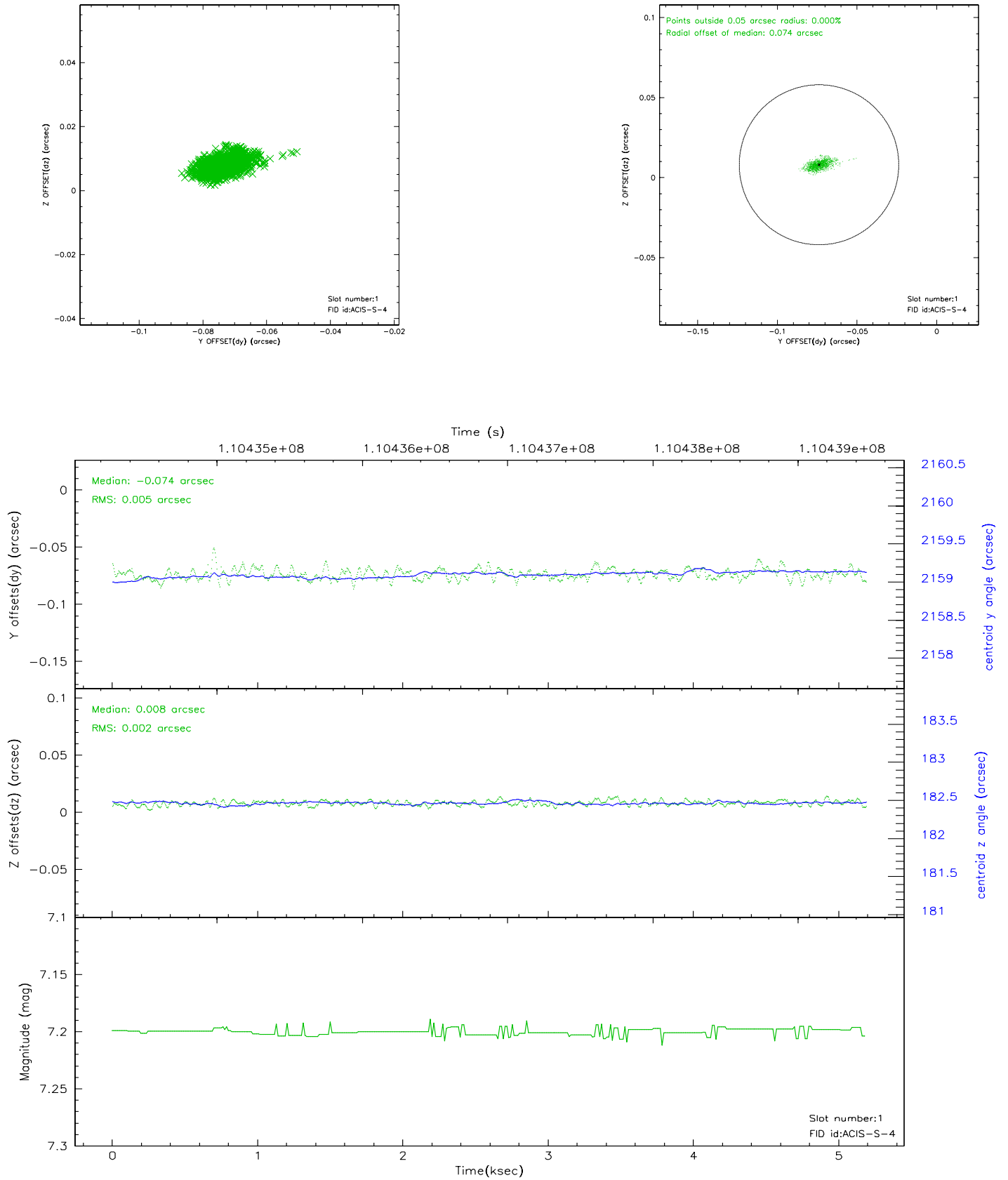


2.5 FID Slots

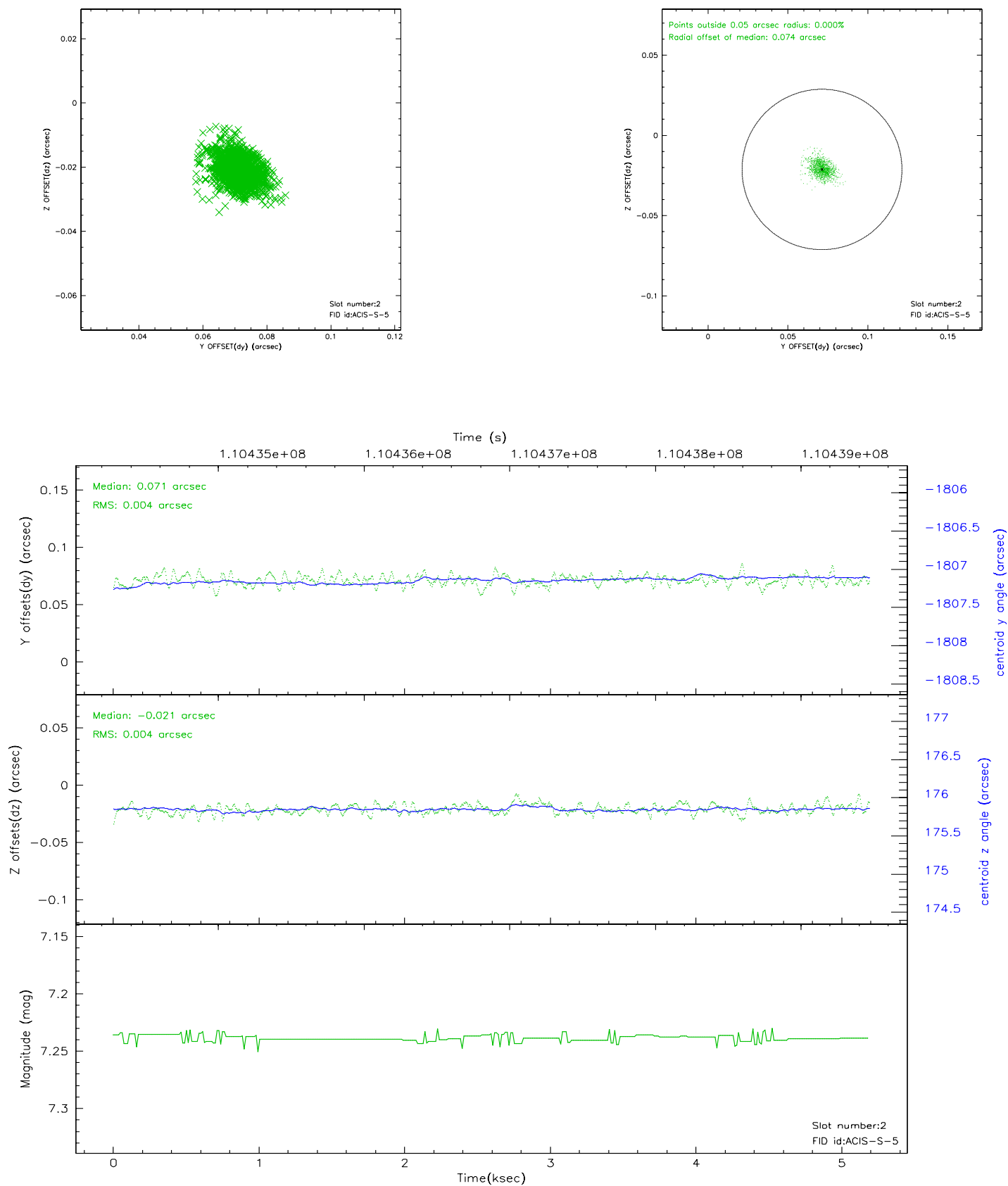
2.5.1 Slot 0



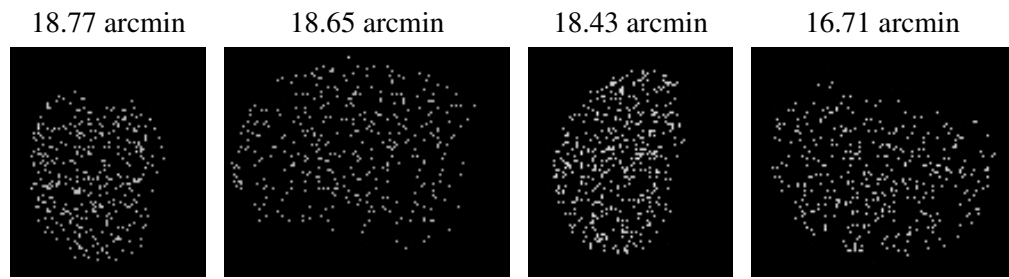
2.5.2 Slot 1



2.5.3 Slot 2



3 Point Sources



A Summary

A.1 Status

V&V Scientist	Jen Lauer
V&V Date (YYYY-MM-DD)	2006.12.11
V&V Edition	1
V&V Disposition and Status	OK
V&V Charge Time	4.758

A.2 Comments