

V&V Reference Report

L2 ASCDS Version : 7.6.9

Observation 1915 - L2 Version 001
Chandra X-Ray Center

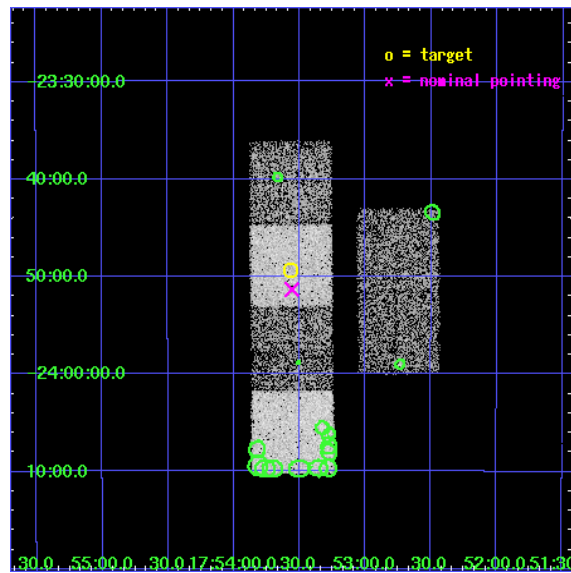
L2 Processing Date : Jan 5 2007

Contents

1	Front	2
2	OBI	3
2.1	OBI	3
2.1.1	Images	3
2.1.2	Bias	3
2.1.3	Parameters	4
2.1.4	Events	4
2.2	Compared Parameters	5
2.3	Aspect	6
2.4	Star Slots	9
2.4.1	Slot 3	9
2.4.2	Slot 4	10
2.4.3	Slot 5	11
2.4.4	Slot 6	12
2.4.5	Slot 7	13
2.5	FID Slots	14
2.5.1	Slot 0	14
2.5.2	Slot 1	15
2.5.3	Slot 2	16
3	Point Sources	17
A	Summary	18
A.1	Status	18
A.2	Comments	18

1 Front

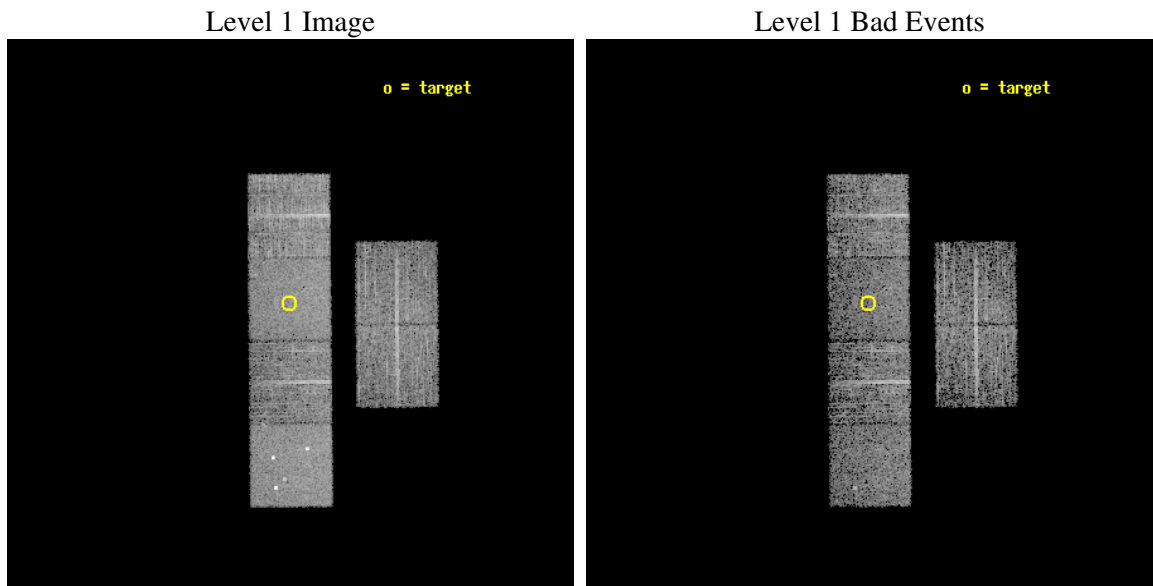
seq_num	400128
obs_id	1915
title	X-RAY BURSTERS WITH LOW PERSISTENT X-RAY LUMINOSITIES
observer	PROF FRANK VERBUNT
object	SAX J1753.5-2349
dtcycle	0
cycle	P
ra_targ	268.391667
dec_targ	-23.823333
ra_nom	268.38932001176
dec_nom	-23.855672072336
roll_nom	269.45966111421
revision	2
ontime	5171.2000048161
livetime	5105.7191566323
ontime2	5171.2000048161
ontime3	5171.2000048161
ontime5	5171.2000048161
ontime6	5171.2000048161
ontime7	5171.2000048161
ontime8	5171.2000048161
l2events	49949



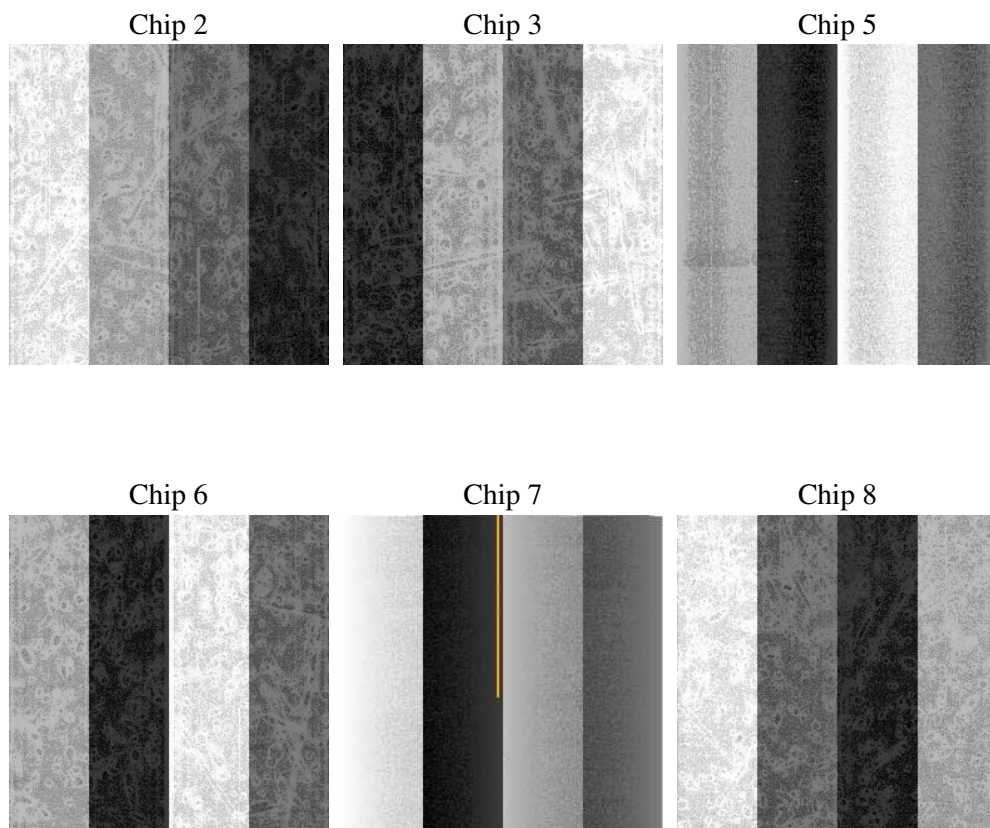
2 OBI

2.1 OBI

2.1.1 Images



2.1.2 Bias



2.1.3 Parameters

obi_num	1
ascdsver	7.6.9
caldsver	3.2.4
date	2007-01-05T10:41:43
revision	2

sched_exp_time	5000.000000
ontime	5182.3627857417
ontime2	5182.3627857417
ontime3	5182.3627857417
ontime5	5182.3628056645
ontime6	5182.3627857417
ontime7	5182.3627857417
ontime8	5182.3627857417
l1events	230132

2.1.4 Events

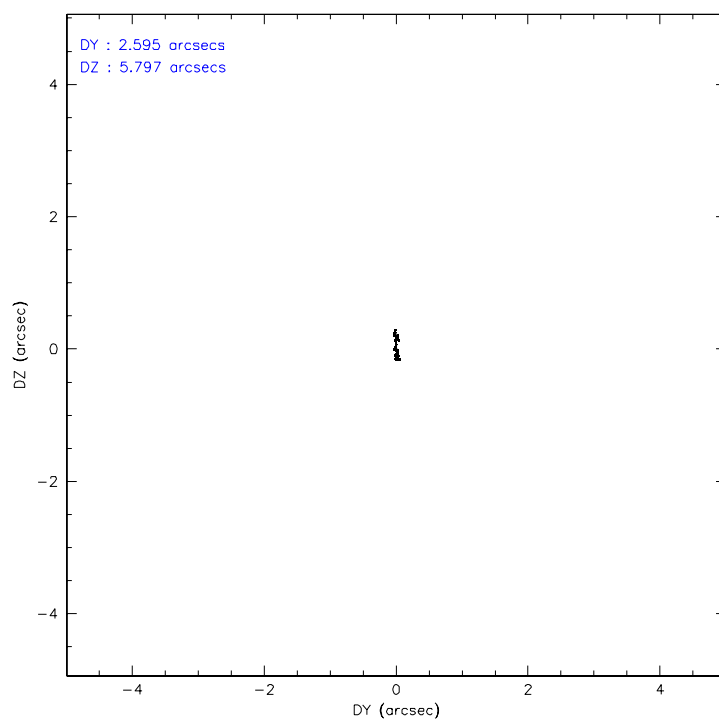
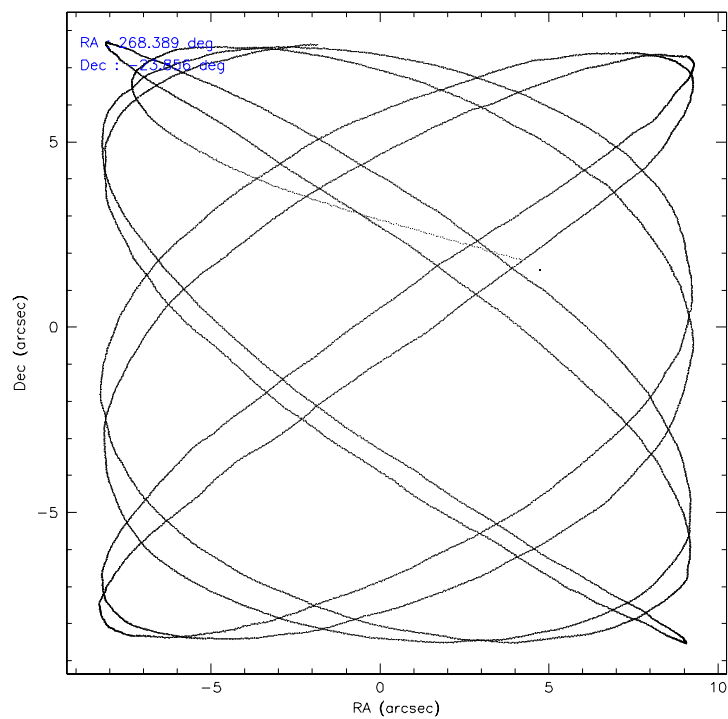
	ccd 2	ccd 3	ccd 5	ccd 6	ccd 7	ccd 8
level 1 events	32216	31987	46592	33368	40704	45265
rejected events	28034	27869	24842	28977	24610	32835
rejected %	87%	87%	53%	86%	60%	72%

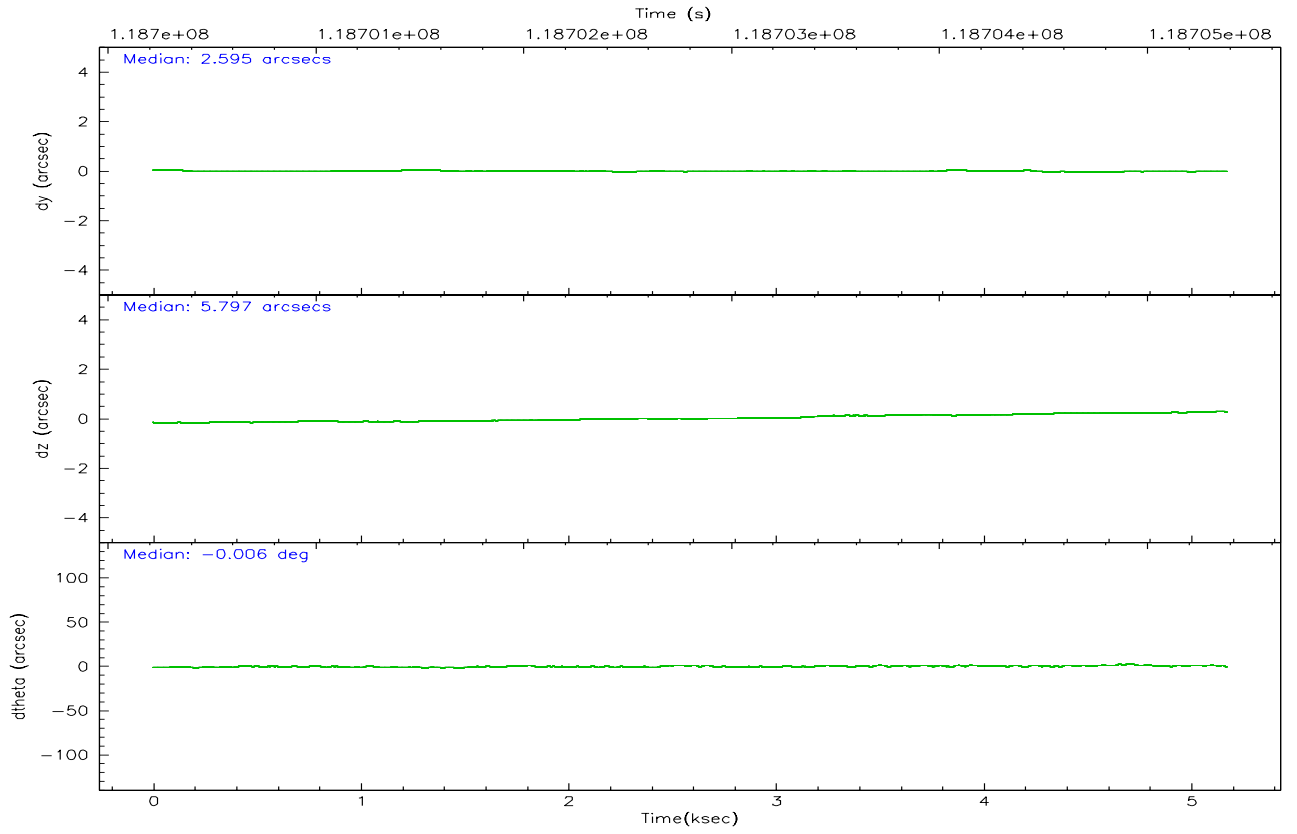
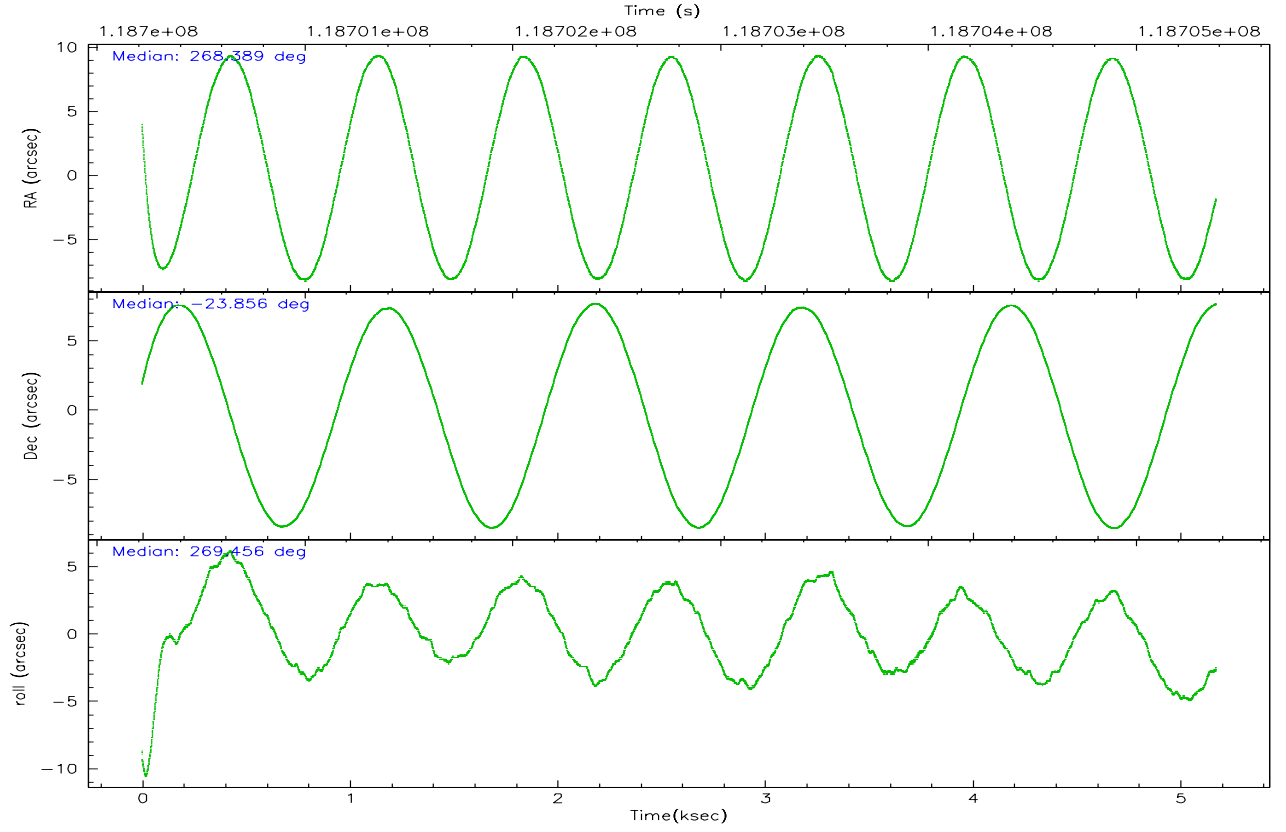
	ccd 2	ccd 3	ccd 5	ccd 6	ccd 7	ccd 8
grade 0 events	1888	1841	3599	1929	1087	4078
	5%	5%	7%	5%	2%	9%
grade 1 events	14	18	189	19	27	33
	0%	0%	0%	0%	0%	0%
grade 2 events	877	852	6227	908	4061	2401
	2%	2%	13%	2%	9%	5%
grade 3 events	357	357	467	387	880	1490
	1%	1%	1%	1%	2%	3%
grade 4 events	342	373	478	375	867	1381
	1%	1%	1%	1%	2%	3%
grade 5 events	1077	1271	2077	1322	2729	1763
	3%	3%	4%	3%	6%	3%
grade 6 events	722	705	11026	802	9248	3097
	2%	2%	23%	2%	22%	6%
grade 7 events	26939	26570	22529	27626	21805	31022
	83%	83%	48%	82%	53%	68%

2.2 Compared Parameters

Parameter	Planned	Actual	Parameter	Planned	Actual
Instrument	ACIS	ACIS	Obspar format version number	6	6
Detector	ACIS-235678	ACIS-235678	Obspar file type	PREDICTED	ACTUAL
Grating	NONE	NONE	Obspar update status	NONE	UPDATED
Data mode	FAINT	FAINT	Number of optional ACIS chips dropped	0	0
Observation mode	POINTING	POINTING	On-chip summing requested	N	N
Pointing RA	268.374421	268.3893200117608	Subarray requested	NONE	NONE
Pointing Dec	-23.832146	-23.85567207233629	Alternating exposures requested	N	N
Pointing Roll	269.297049	269.4596611142146	Primary exposure time	0.000000	3.2
SIM focus pos (mm)	-0.684267	-0.6828225247311905			
SIM defocus (mm)	0	0.001444936568705701			
SIM translation stage pos (mm)	-190.132523	-190.1425803651734			
SIM translation stage offset (mm)	0	0.01005778216563158			
Observation start time	118700386.184000	118699310.74878			
Observation start date	2001-10-05T20:18:42	2001-10-05T20:01:50			
Observation end time	118705386.184000	118705924.56155			
Observation end date	2001-10-05T21:42:02	2001-10-05T21:52:04			
Read mode	TIMED	TIMED			

2.3 Aspect



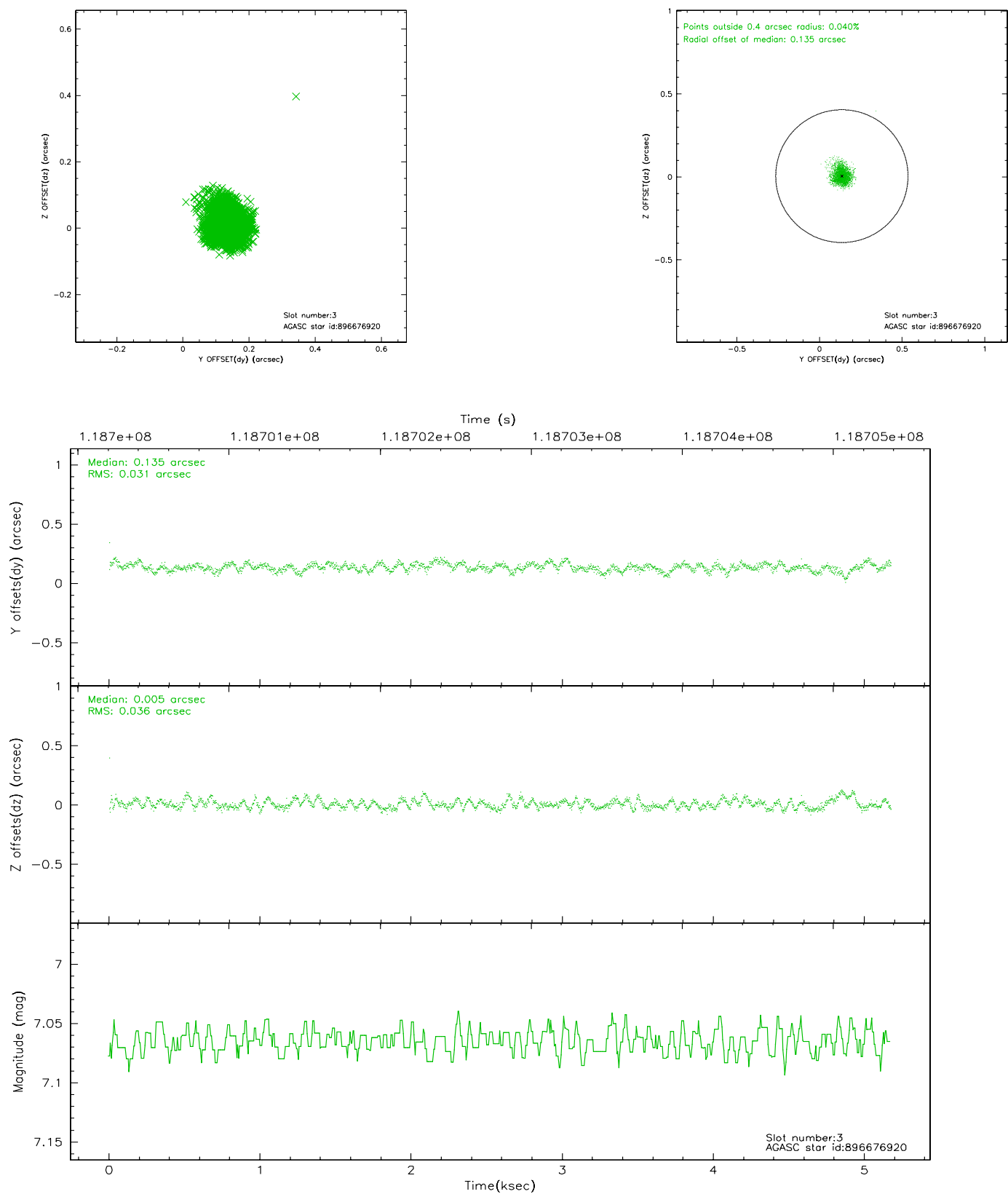


Slot Statistics

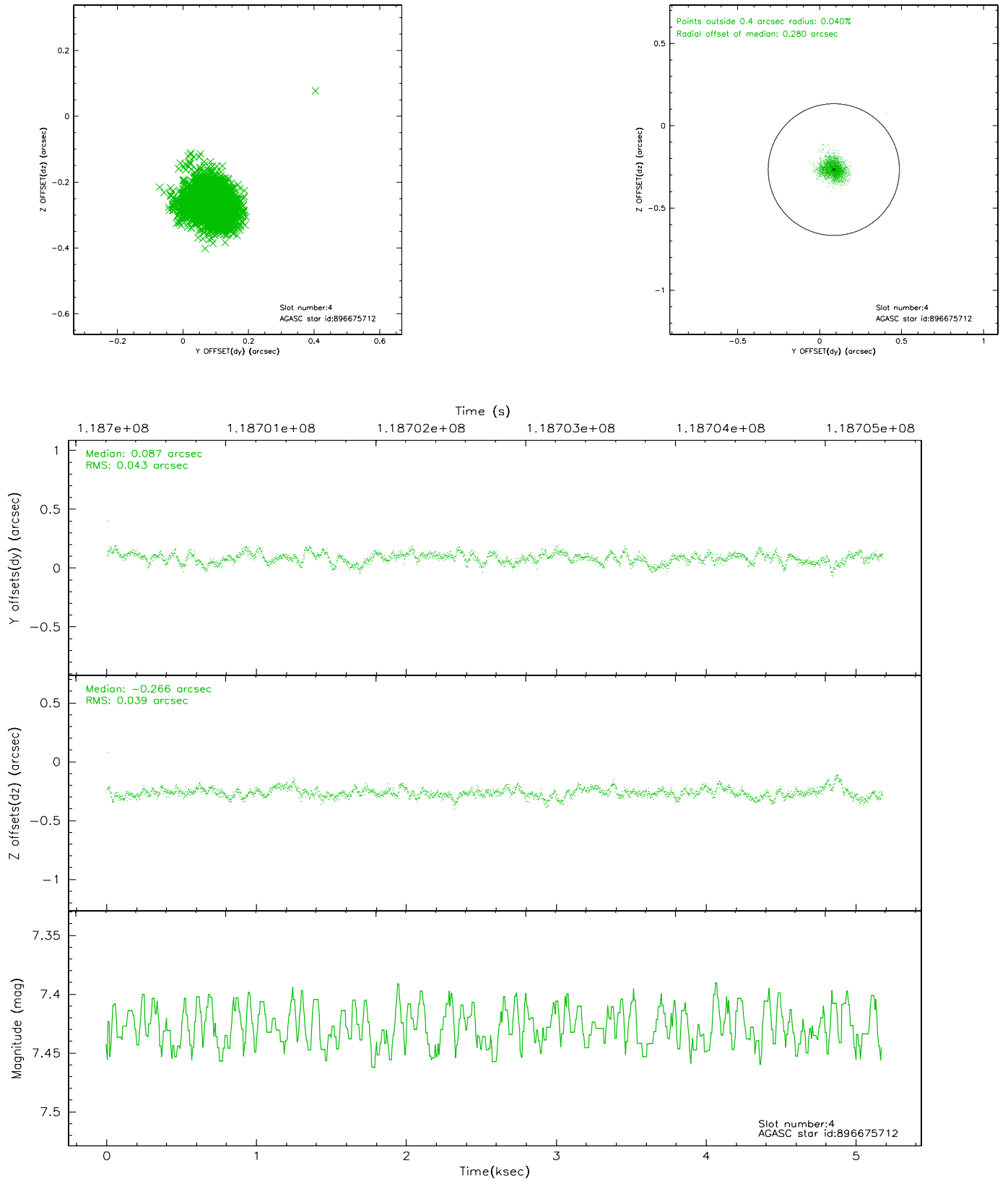
slot	status	id	mag	n_pts	med_dy	med_dz	dr1	dr2	ra	dec	mean_y	mean_z
0	FID	ACIS-S-1	7.19	1262	-0.025	0.004	0.011	0.019	0.000000	0.000000	940.79	-1722.53
1	FID	ACIS-S-5	7.24	1262	0.045	-0.002	0.006	0.011	0.000000	0.000000	-1807.48	173.80
2	FID	ACIS-S-6	7.35	1262	-0.041	0.010	0.011	0.016	0.000000	0.000000	405.06	819.11
3	GUIDE	896676920	7.07	2525	0.135	0.005	0.050	0.082	268.229437	-24.215089	1385.31	-458.08
4	GUIDE	896675712	7.43	2525	0.087	-0.266	0.060	0.099	267.913019	-23.677453	-534.42	-1527.48
5	GUIDE	896675664	7.88	2524	-0.119	-0.100	0.048	0.085	268.725617	-23.486931	-1255.32	1144.39
6	GUIDE	896676832	8.77	2525	0.126	0.010	0.064	0.105	268.764867	-24.199321	1307.91	1299.70
7	GUIDE	896663656	10.03	2453	-0.231	0.355	0.134	0.222	268.852145	-23.189863	-2327.97	1554.13

2.4 Star Slots

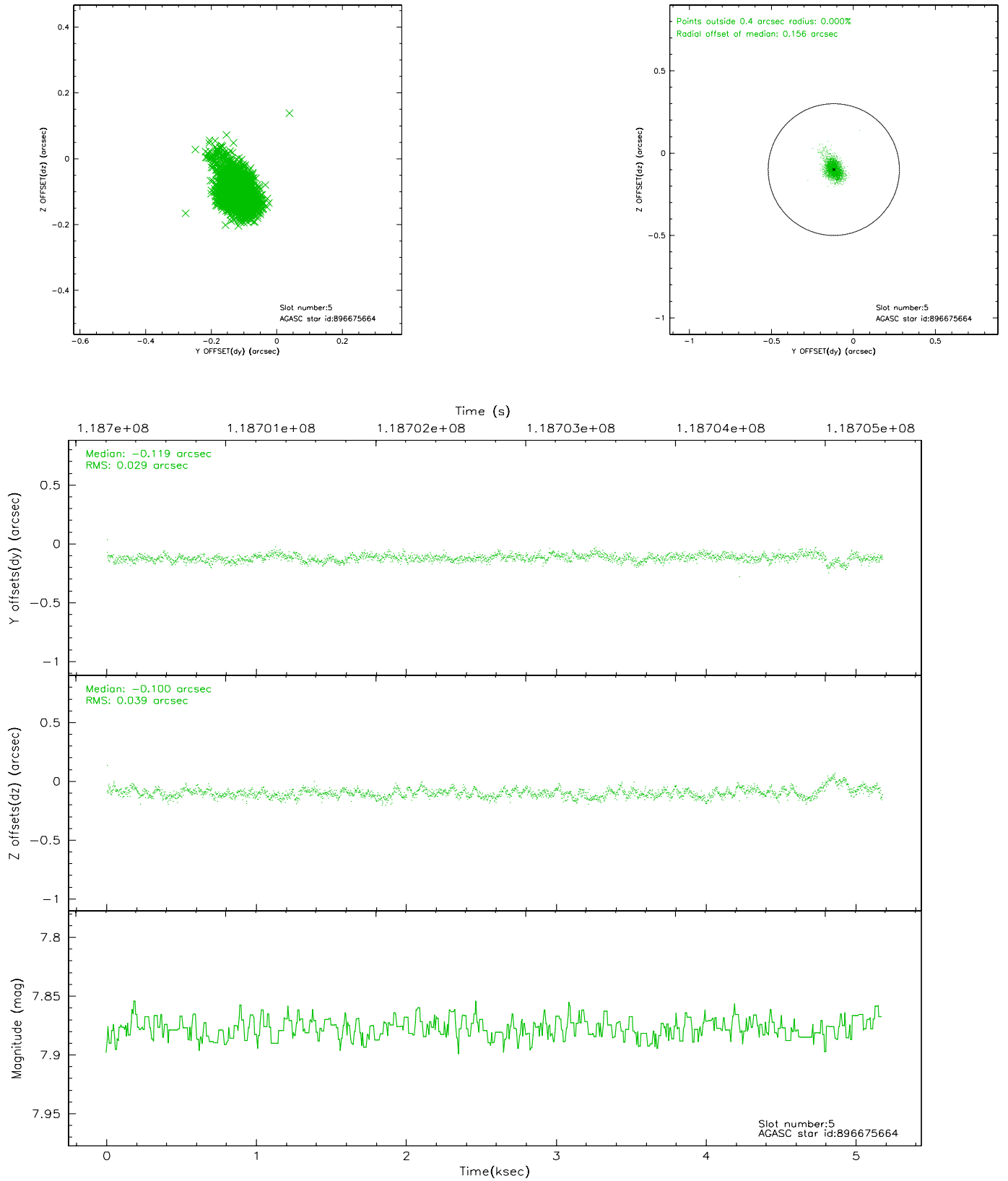
2.4.1 Slot 3



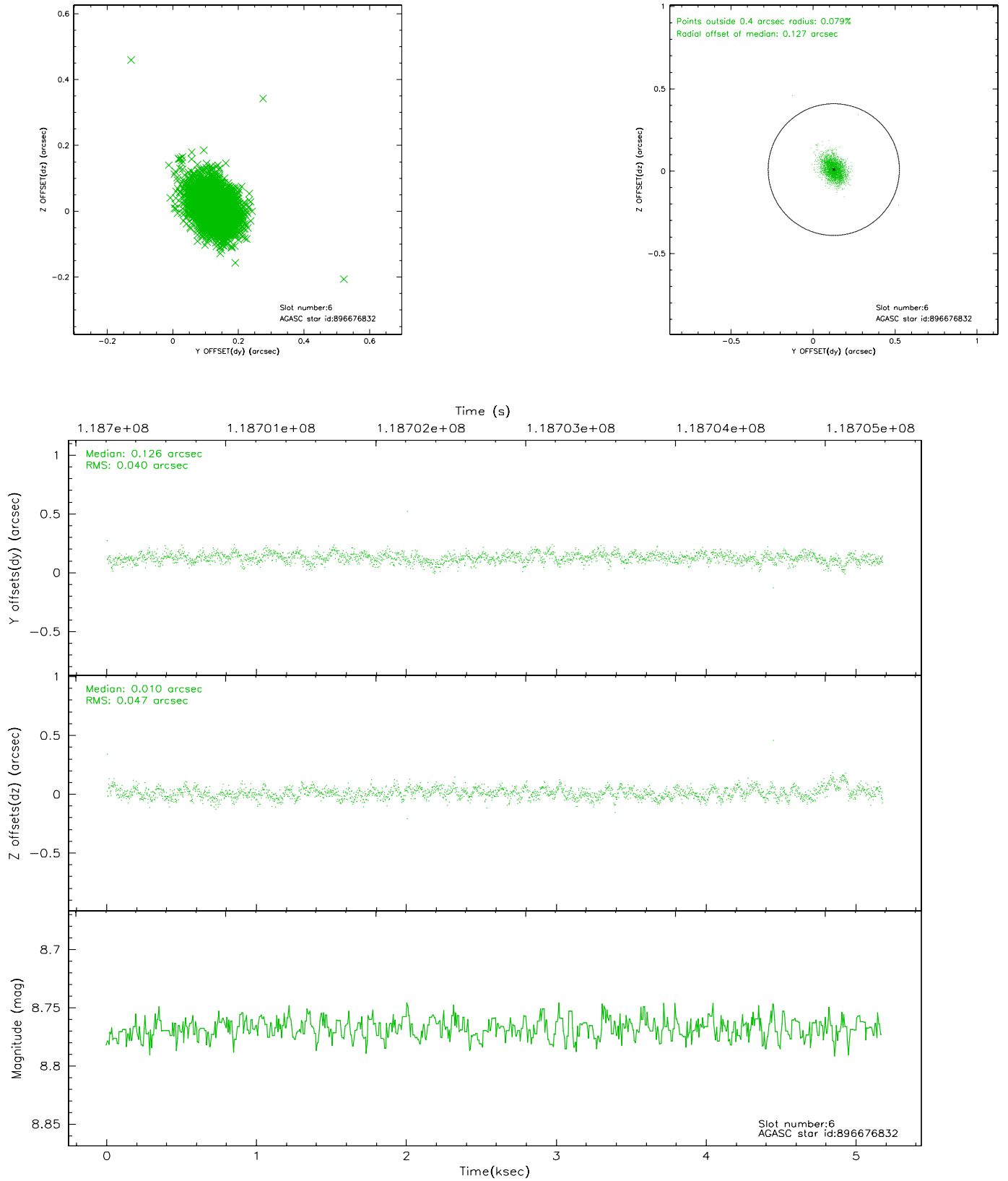
2.4.2 Slot 4



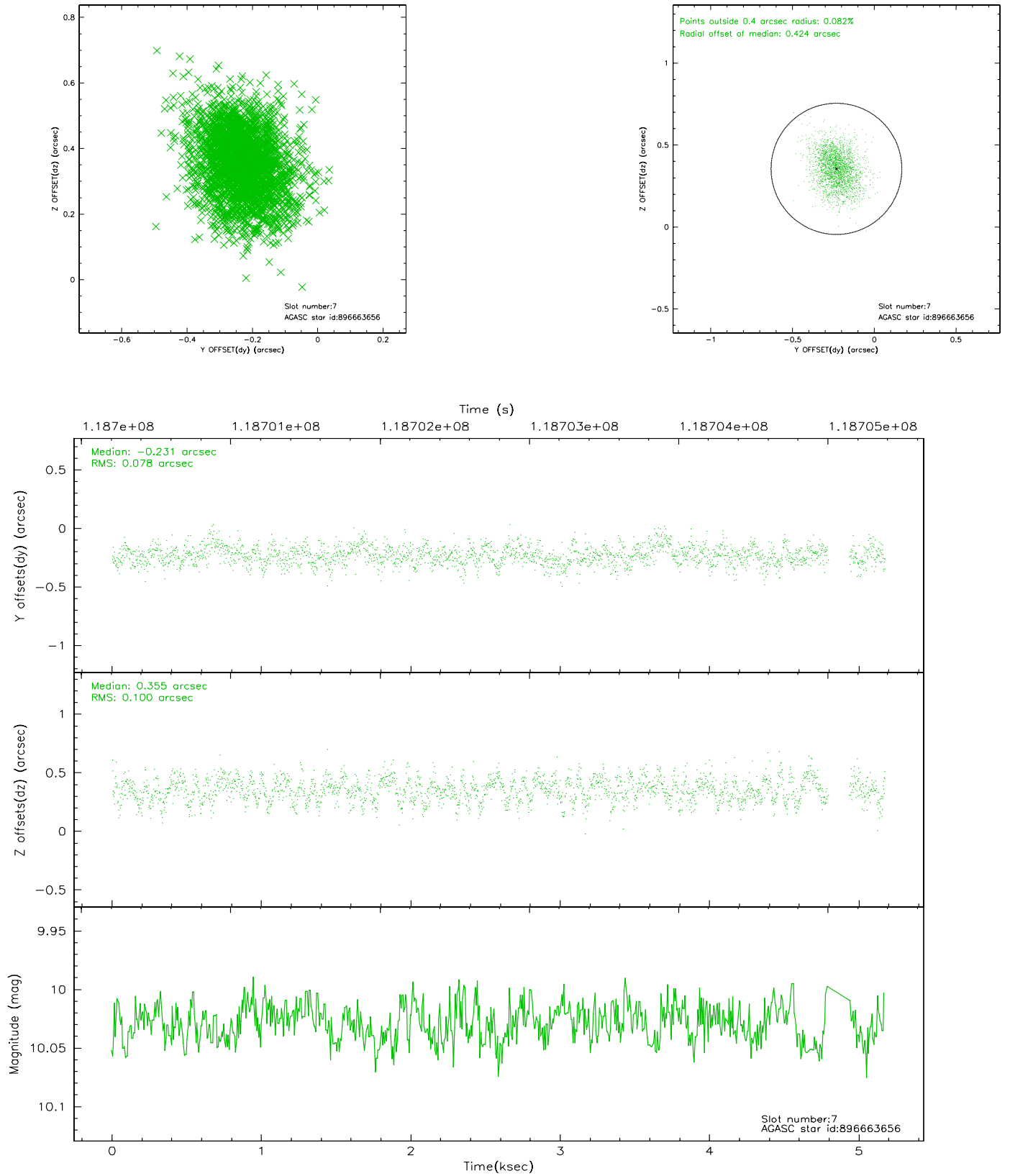
2.4.3 Slot 5



2.4.4 Slot 6

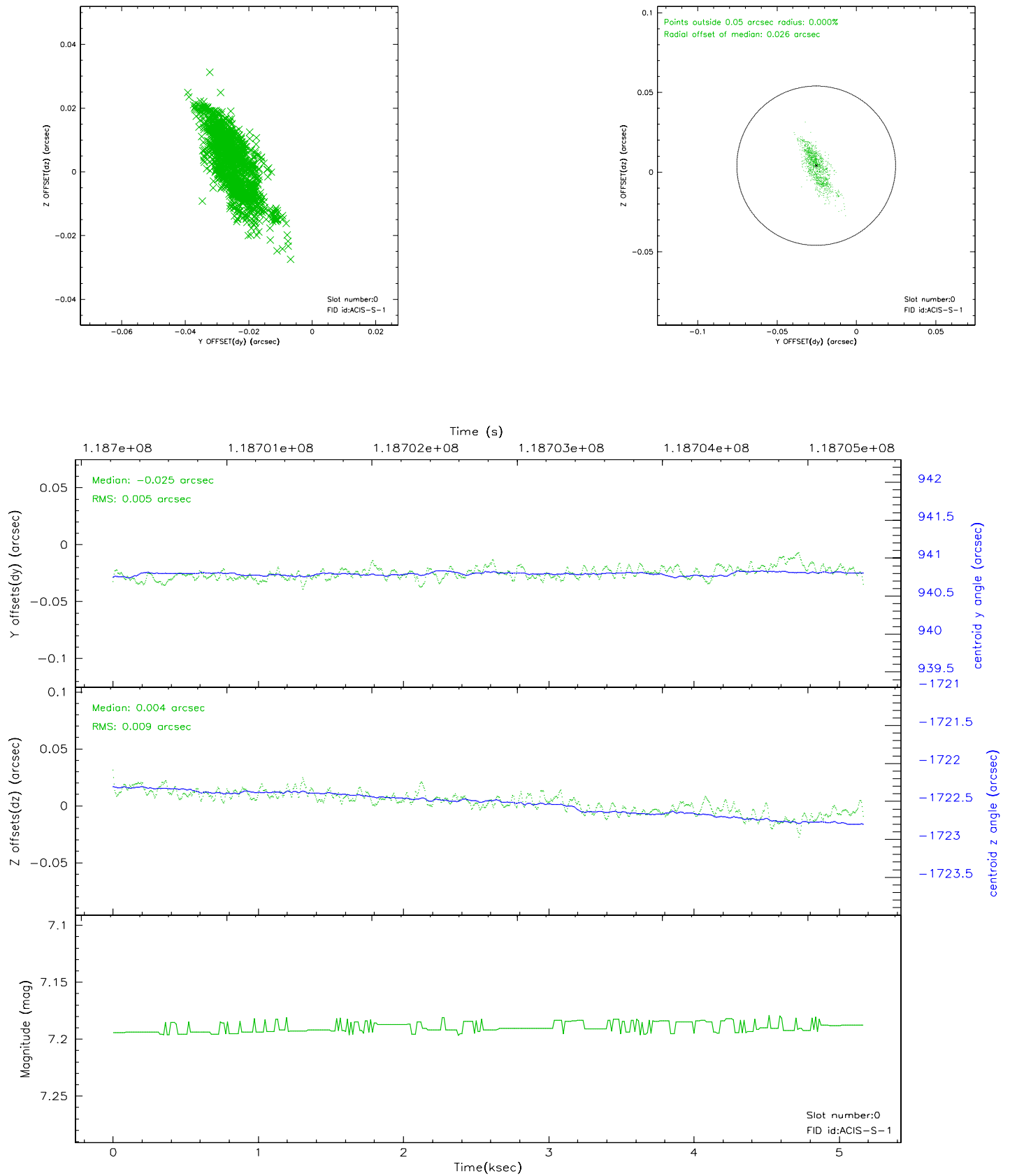


2.4.5 Slot 7

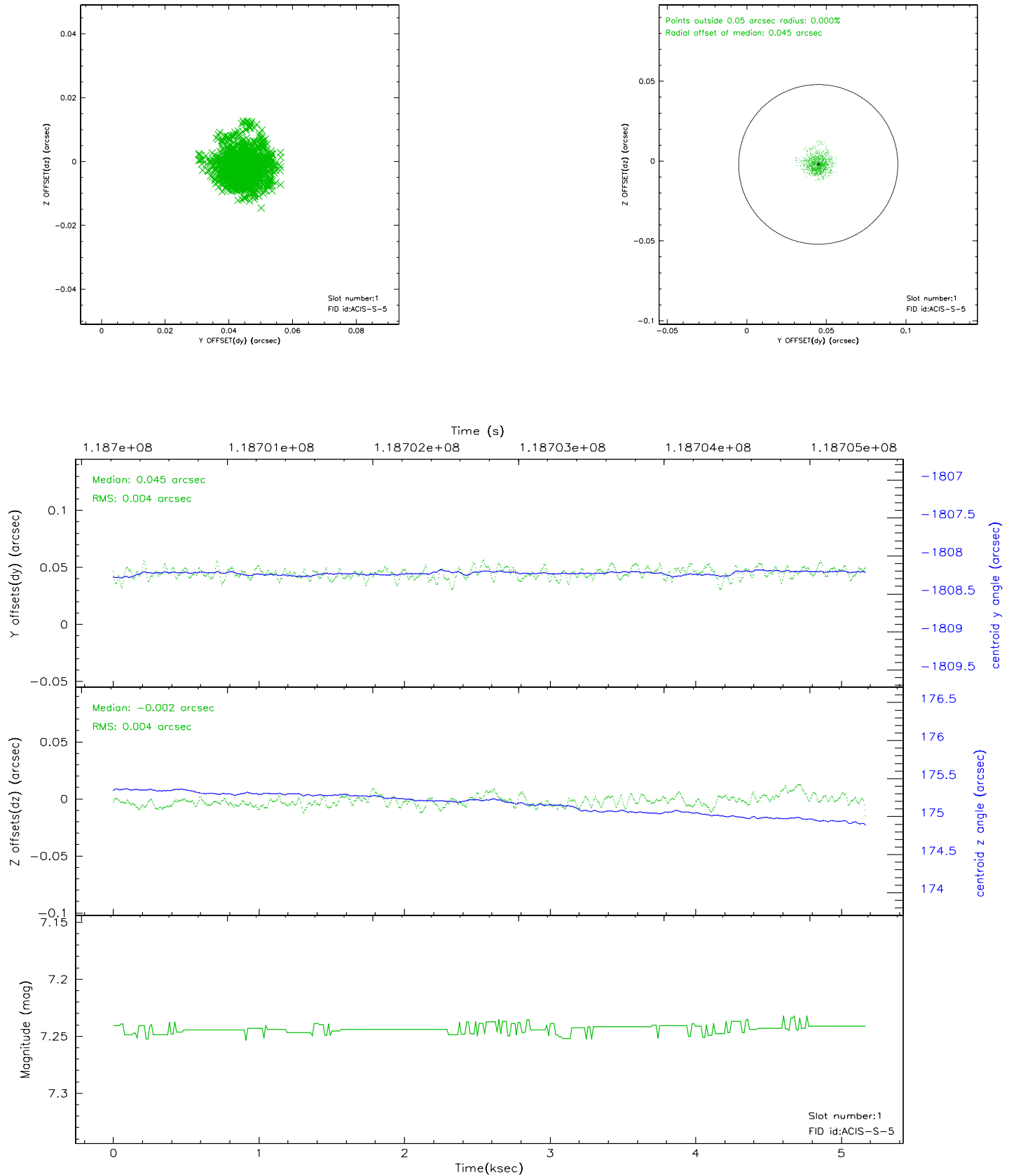


2.5 FID Slots

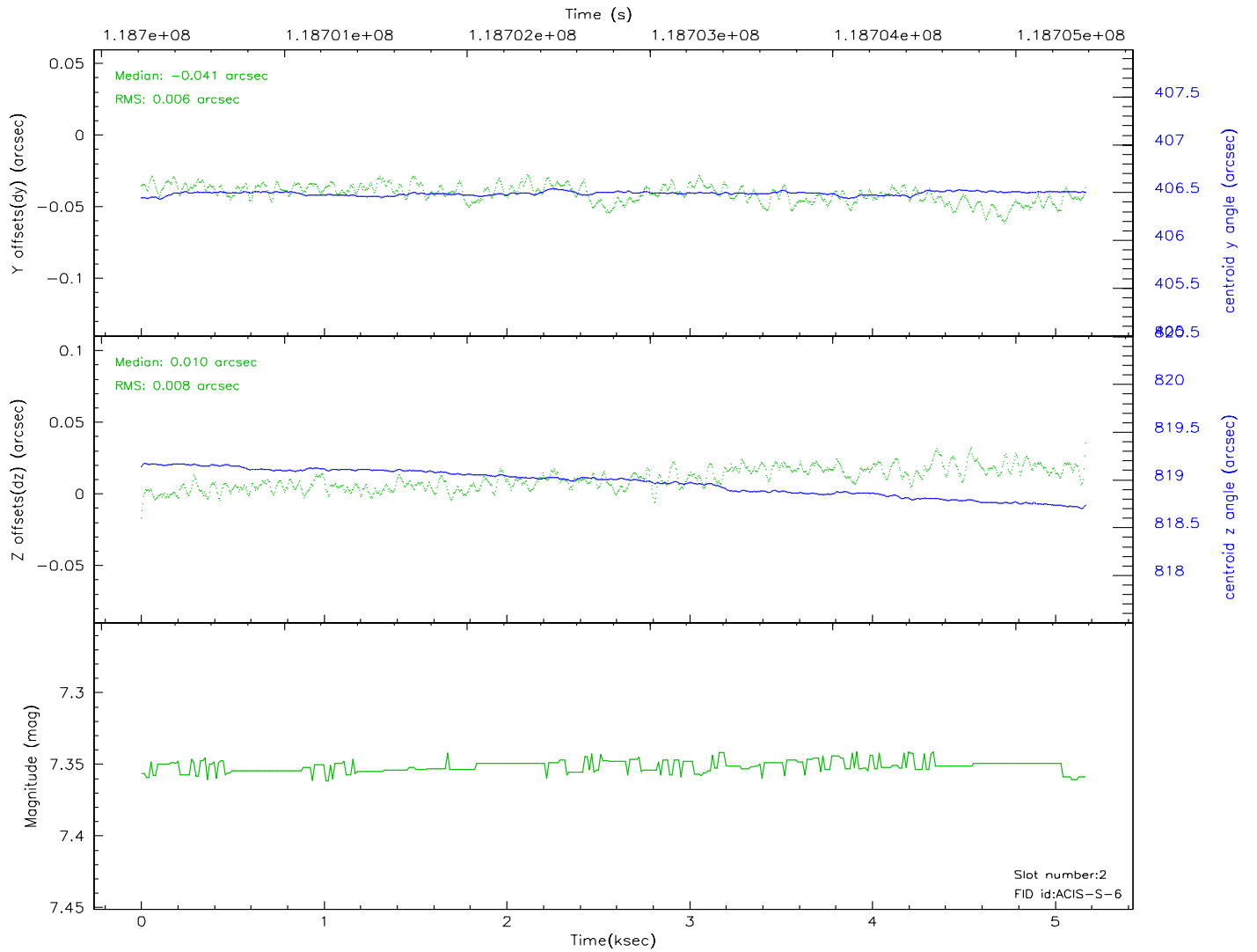
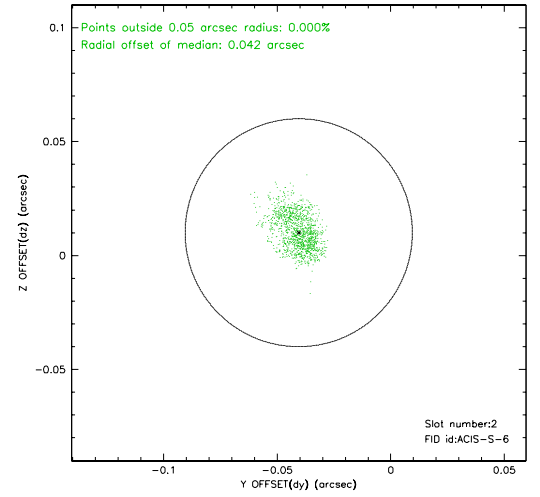
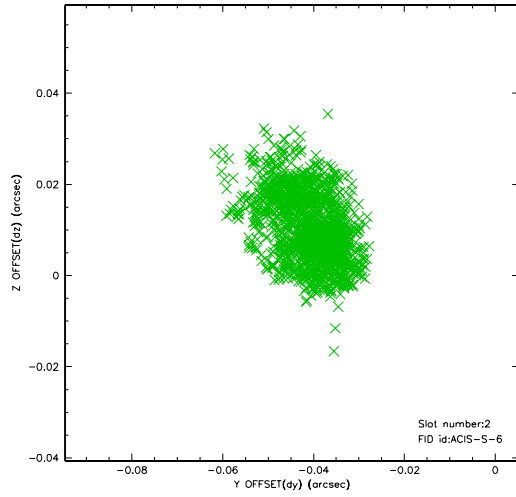
2.5.1 Slot 0



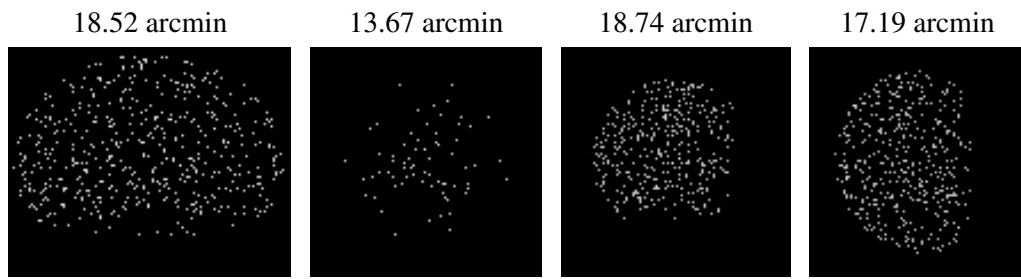
2.5.2 Slot 1



2.5.3 Slot 2



3 Point Sources



A Summary

A.1 Status

V&V Scientist	Beth Sundheim
V&V Date (YYYY-MM-DD)	2007.01.05
V&V Edition	1
V&V Disposition and Status	OK
V&V Charge Time	5.171

A.2 Comments